

District I
1625 N. French Dr., Hobbs, NM 88240
Phone:(575) 393-6161 Fax:(575) 393-0720

District II
811 S. First St., Artesia, NM 88210
Phone:(575) 748-1283 Fax:(575) 748-9720

District III
1000 Rio Brazos Rd., Aztec, NM 87410
Phone:(505) 334-6178 Fax:(505) 334-6170

District IV
1220 S. St Francis Dr., Santa Fe, NM 87505
Phone:(505) 476-3470 Fax:(505) 476-3462

State of New Mexico
Energy, Minerals and Natural Resources
Oil Conservation Division
1220 S. St Francis Dr.
Santa Fe, NM 87505

Form C-101
August 1, 2011
Permit 370921

APPLICATION FOR PERMIT TO DRILL, RE-ENTER, DEEPEN, PLUGBACK, OR ADD A ZONE

1. Operator Name and Address Franklin Mountain Energy 3, LLC 44 Cook Street Denver, CO 80206		2. OGRID Number 331595
		3. API Number 30-025-53411
4. Property Code 336098	5. Property Name BALL STATE COM	6. Well No. 802H

7. Surface Location

UL - Lot C	Section 32	Township 18S	Range 35E	Lot Idn C	Feet From 822	N/S Line N	Feet From 2307	E/W Line W	County Lea
---------------	---------------	-----------------	--------------	--------------	------------------	---------------	-------------------	---------------	---------------

8. Proposed Bottom Hole Location

UL - Lot C	Section 32	Township 18S	Range 35E	Lot Idn C	Feet From 100	N/S Line N	Feet From 1660	E/W Line W	County Lea
---------------	---------------	-----------------	--------------	--------------	------------------	---------------	-------------------	---------------	---------------

9. Pool Information

SCHARB;WOLFCAMP	55640
-----------------	-------

Additional Well Information

11. Work Type New Well	12. Well Type OIL	13. Cable/Rotary	14. Lease Type State	15. Ground Level Elevation 3926
16. Multiple N	17. Proposed Depth 22228	18. Formation Wolfcamp	19. Contractor	20. Spud Date 5/15/2025
Depth to Ground water		Distance from nearest fresh water well		Distance to nearest surface water

We will be using a closed-loop system in lieu of lined pits

21. Proposed Casing and Cement Program

Type	Hole Size	Casing Size	Casing Weight/ft	Setting Depth	Sacks of Cement	Estimated TOC
Surf	17.5	13.375	54.5	1916	1468	0
Int1	12.25	9.625	40	7687	1683	0
Prod	8.75	7	32	10948	285	6687
Prod	8.75	5.5	20	22228	2815	10948

Casing/Cement Program: Additional Comments

--

22. Proposed Blowout Prevention Program

Type	Working Pressure	Test Pressure	Manufacturer
Double Ram	10000	5000	CACTUS

23. I hereby certify that the information given above is true and complete to the best of my knowledge and belief. I further certify I have complied with 19.15.14.9 (A) NMAC <input checked="" type="checkbox"/> and/or 19.15.14.9 (B) NMAC <input checked="" type="checkbox"/> if applicable.	OIL CONSERVATION DIVISION
Signature:	
Printed Name: Electronically filed by Rachael A Overbey	Approved By: Paul F Kautz
Title: Project Manager	Title: Geologist
Email Address: roverbey@fmellc.com	Approved Date: 8/22/2024
Date: 8/19/2024	Expiration Date: 8/22/2026
Phone: 303-570-4057	Conditions of Approval Attached

District I
1625 N. French Dr., Hobbs, NM 88240
Phone: (575) 393-6161 Fax: (575) 393-0720
District II
811 S. First St., Artesia, NM 88210
Phone: (575) 748-1283 Fax: (575) 748-9720
District III
1000 Rio Brazos Road, Aztec, NM 87410
Phone: (505) 334-6178 Fax: (505) 334-6170
District IV
1220 S. St. Francis Dr., Santa Fe, NM 87505
Phone: (505) 476-3460 Fax: (505) 476-3462

State of New Mexico
Energy, Minerals & Natural Resources Department
OIL CONSERVATION DIVISION
1220 South St. Francis Dr.
Santa Fe, NM 87505

Form C-102
Revised August 1, 2011
Submit one copy to appropriate
District Office

AMENDED REPORT

WELL LOCATION AND ACREAGE DEDICATION PLAT

¹ API Number		² Pool Code 55640		³ Pool Name SCHARB; WOLFCAMP	
⁴ Property Code		⁵ Property Name BALL STATE COM			⁶ Well Number 802H
⁷ OGRID No. 331595		⁸ Operator Name FRANKLIN MOUNTAIN ENERGY 3, LLC			⁹ Elevation 3926.7'

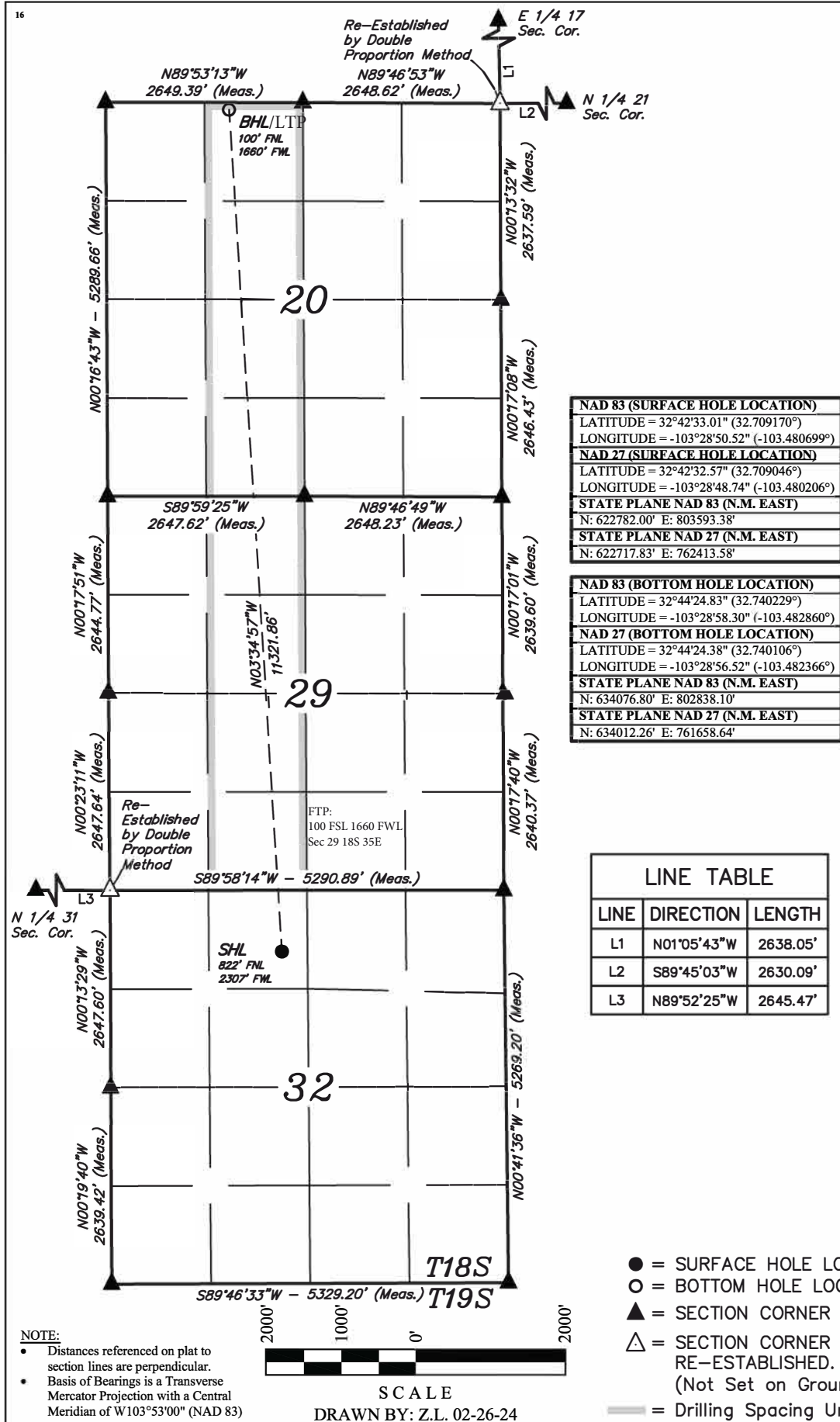
¹⁰ Surface Location

UL or lot no.	Section	Township	Range	Lot Idn	Feet from the	North/South line	Feet from the	East/West line	County
C	32	18S	35E		822	NORTH	2307	WEST	LEA

¹¹ Bottom Hole Location If Different From Surface

UL or lot no.	Section	Township	Range	Lot Idn	Feet from the	North/South line	Feet from the	East/West line	County
C	20	18S	35E		100	NORTH	1660	WEST	LEA
¹² Dedicated Acres 320		¹³ Joint or Infill		¹⁴ Consolidation Code		¹⁵ Order No.			

No allowable will be assigned to this completion until all interests have been consolidated or a non-standard unit has been approved by the division.



¹⁷ OPERATOR CERTIFICATION
I hereby certify that the information contained herein is true and complete to the best of my knowledge and belief, and that this organization either owns a working interest or unleased mineral interest in the land including the proposed bottom hole location or has a right to drill this well at this location pursuant to a contract with an owner of such a mineral or working interest, or to a voluntary pooling agreement or a compulsory pooling order heretofore entered by the division.

Rachael Overbey 5/15/2024
Signature Date

Rachael Overbey
Printed Name

roverbey@fmellc.com
E-mail Address

¹⁸ SURVEYOR CERTIFICATION
I hereby certify that the well location shown on this plat was plotted from field notes of actual surveys made by me or under my supervision, and that the same is true and correct to the best of my belief.

February 20, 2024
Date of Survey

Signature and Seal of Professional Surveyor:

PAUL BUCHELE
NEW MEXICO
23782
02-26-24
PROFESSIONAL SURVEYOR

Certificate Number:

NAD 83 (SURFACE HOLE LOCATION)
LATITUDE = 32°42'33.01" (32.709170°)
LONGITUDE = -103°28'50.52" (-103.480699°)
NAD 27 (SURFACE HOLE LOCATION)
LATITUDE = 32°42'32.57" (32.709046°)
LONGITUDE = -103°28'48.74" (-103.480206°)
STATE PLANE NAD 83 (N.M. EAST)
N: 622782.00' E: 803593.38'
STATE PLANE NAD 27 (N.M. EAST)
N: 622717.83' E: 762413.58'
NAD 83 (BOTTOM HOLE LOCATION)
LATITUDE = 32°44'24.83" (32.740229°)
LONGITUDE = -103°28'58.30" (-103.482860°)
NAD 27 (BOTTOM HOLE LOCATION)
LATITUDE = 32°44'24.38" (32.740106°)
LONGITUDE = -103°28'56.52" (-103.482366°)
STATE PLANE NAD 83 (N.M. EAST)
N: 634076.80' E: 802838.10'
STATE PLANE NAD 27 (N.M. EAST)
N: 634012.26' E: 761658.64'

LINE TABLE

LINE	DIRECTION	LENGTH
L1	N01°05'43"W	2638.05'
L2	S89°45'03"W	2630.09'
L3	N89°52'25"W	2645.47'

- = SURFACE HOLE LOCATION
- = BOTTOM HOLE LOCATION
- ▲ = SECTION CORNER LOCATED
- △ = SECTION CORNER RE-ESTABLISHED. (Not Set on Ground.)
- = Drilling Spacing Unit

District I
 1625 N. French Dr., Hobbs, NM 88240
 Phone:(575) 393-6161 Fax:(575) 393-0720
District II
 811 S. First St., Artesia, NM 88210
 Phone:(575) 748-1283 Fax:(575) 748-9720
District III
 1000 Rio Brazos Rd., Aztec, NM 87410
 Phone:(505) 334-6178 Fax:(505) 334-6170
District IV
 1220 S. St Francis Dr., Santa Fe, NM 87505
 Phone:(505) 476-3470 Fax:(505) 476-3462

State of New Mexico
Energy, Minerals and Natural Resources
Oil Conservation Division
1220 S. St Francis Dr.
Santa Fe, NM 87505

Form APD Conditions

Permit 370921

PERMIT CONDITIONS OF APPROVAL

Operator Name and Address: Franklin Mountain Energy 3, LLC [331595] 44 Cook Street Denver, CO 80206	API Number: 30-025-53411
	Well: BALL STATE COM #802H

OCD Reviewer	Condition
pkautz	Notify OCD 24 hours prior to casing & cement
pkautz	Will require a File As Drilled C-102 and a Directional Survey with the C-104
pkautz	Once the well is spud, to prevent ground water contamination through whole or partial conduits from the surface, the operator shall drill without interruption through the fresh water zone or zones and shall immediately set in cement the water protection string
pkautz	Oil base muds are not to be used until fresh water zones are cased and cemented providing isolation from the oil or diesel. This includes synthetic oils. Oil based mud, drilling fluids and solids must be contained in a steel closed loop system
pkautz	Cement is required to circulate on both surface and intermediate1 strings of casing
pkautz	If cement does not circulate on any string, a CBL is required for that string of casing
pkautz	The Operator is to notify NMOCD by sundry (Form C-103) within ten (10) days of the well being spud



Ball State Com 802H

1. Geologic name of surface location: Permian
2. Estimated tops of important geological markers:

Formations	PROG SS	PROG TVD	Picked TVD	delta	Potential/Issues
Cenozoic Alluvium (surface)		3,955'	3,955'	0	Sand/Gravels/Unconsolidated
Rustler	2,089'	1,866'			Carbonates
Salado	1,759'	2,196'			Salt, Carbonate & Clastics
Base Salt	786'	3,170'			Shaley Carbonate & Shale
Yates	485'	3,471'			Anhydrite/Shale
Seven Rivers	33'	3,922'			Interbedded Shale/Carbonate
Queen	-688'	4,643'			Sandstone & Dolomite & Anhydrite
Delaware Mtn Group	-2,023'	5,978'			Sandstone/Carb/Shale - oil/gas/water
Bone Spring Lime	-3,586'	7,542'			Shale/Carbonates - oil/gas
First Bone Spring Sand	-5,182'	9,137'			Sandstone - oil/gas/water
Second Bone Spring Carbonate	-5,382'	9,337'			Shale/Carbonates - oil/gas
Second Bone Spring Sand	-5,694'	9,650'			Sandstone - oil/gas/water
Third Bone Spring Carbonate	-6,218'	10,174'			Shale/Carbonates - oil/gas
Third Bone Spring Sand	-6,292'	10,248'			Sandstone - oil/gas/water
Wolfcamp	-6,498'	10,453'			Overpressure Shale/Sand- oil/gas
Wolfcamp B	-7,067'	11,022'			Overpressure Shale - oil/gas
HZ Target	-7,520'	11,475'			Overpressure Shale - oil/gas
Base Wolfcamp	-7,737'	11,693'			Overpressure Shale - oil/gas

3. Estimated depth of anticipated fresh water, oil or gas:

Upper Permian Sands	0- 400'	Fresh Water
Delaware Sands	5,978'	Oil
1 st Bone Spring Sand	9,137'	Oil
2 nd Bone Spring Carb	9,337'	Oil
2 nd Bone Spring Sand	9,650'	Oil
3 rd Bone Spring Sand	10,248'	Oil
Wolfcamp	10,453'	Oil
Wolfcamp B	11,022'	Oil

No other formations are expected to give up oil, gas or fresh water in measurable quantities. Surface freshwater sands will be protected by setting 13-3/8" casing at 1,916' and circulating cement back to surface.

4. Casing Program:

All casing strings will be run new.



Casing string	Weight	Grade	Burst	Collapse	Tension	Conn	Length	API design factor			
								Burst	Collapse	Tension	Coupling
Surface 13 3/8"	54.5	J-55	2730	1130	853	BTC 909	1,916	1.01	1.13	4.17	4.45
Intermediate 9 5/8"	40	HCL-80	7430	4230	916	BTC 1042	7,687	1.35	1.18	2.25	2.56
Production 7"	32	HCP-110	12460	10760	1025	CDC-HTQ 1053	10,948	1.73	2.10	2.28	2.34
Production 5 1/2"	20	HCP-110	12640	12200	641	CDC-HTQ 667	11,280 11,475	1.15	2.31	1.97	2.05 2.02

Tapered production string will be ran with a X-over installed at the KOP of 10,948'.

Cementing Program:

Cementing Stage tool can be placed in the 1st Intermediate string as a contingency to ensure required TOC to surface.

To increase efficiency of drilling operations and minimize disturbance of the area the batch-drilling approach will be used.

Off-line cementing may be utilized for Surface, Intermediate, and Production strings to further optimization of drilling process and reduction of disturbance.

String Type	Hole Size	Casing		Lead					Tail					
		Size	Setting Depth	Sacks	Type of cmt	Yield ft3/sk	Water gal/sk	TOC ft	Sacks	Type of cmt	Yield ft3/sk	Water gal/sk	TOC	Excess
Surf	17.5	13.375	1,916	1027	85:15 Compass Poz, 12.8 ppg Class C, 5%Gel,3#/sk Kol Seal, 4.64#/sk Salt	2.05	11.12	0	441	Tail, 14.8 ppg, 100% Class C, 1%CaCl2, 0.1%	1.34	6.35	0	100%
Int1	12.25	9.625	7,687	1482	Lead, 11.3 ppg, HSLD 82 10% Gel, 4% STE, 2#/sk, Gyp Seal	2.74	16.31	0	201	Econolite Tail, 14.8 ppg, 100% Class C, 0.08% C-51	1.33	6.33	2,377	100%
Prod	8.75	7	10,948	285	HSLD 9420, 10.5 ppg, Class C, 1#/sk Salt, 4% STE 1% C-45	3.99	25.51	6,687						100%
Prod	8.75	5.5	22,228						2815	HSLD 80, 13.ppg, 32#/sk Salt, 4% STE, 1#/sk Gyp Seal	1.52	7.59	10,948	50%

5. Minimum Specifications for Pressure Control:



The minimum blowout preventer equipment (BOPE) shown in Exhibit #1 will consist of a single ram, mud cross and double ram-type (10,000 psi WP) preventer and an annular preventer (5,000-psi WP). Both units will be hydraulically operated, and the ram-type will be equipped with blind rams on bottom and 4 ½" x 7" variable pipe rams on top. All BOPE will be tested in accordance with Onshore Oil & Gas order No. 2.

Before drilling out of the surface casing, the ram-type BOP and accessory equipment will be tested to 5,000/250 psig and the annular preventer to 3,500/250 psig. The surface casing will be tested to 1500 psi for 30 minutes.

Before drilling out of the intermediate casing, the ram-type BOP and accessory equipment will be tested to 10,000/250 psig and the annular preventer to 3,500/250 psig.

Pipe rams will be operationally checked each 24-hour period. Blind rams will be operationally checked on each trip out of the hole. These checks will be noted on the daily tour sheets.

A hydraulically operated choke will be installed prior to drilling out of the intermediate casing shoe.

6. Types and characteristics of the proposed mud system:

During this procedure we plan to use a Closed-Loop System and haul contents to the required disposal. The applicable depths and properties of the drilling fluid systems are as follows.

Depth	Type	Weight (ppg)	Viscosity	Water Loss
0 – 1,916'	Fresh - Gel	8.6-8.8	28-34	N/c
1,916' – 7,687'	Brine	8.8-10.2	28-34	N/c
7,687" – 11,848'	Brine	8.8-10.2	28-34	N/c
11,848' – 22,228' Lateral	Oil Base	9.0-13	58-68	3 - 6

The

highest mud weight needed to balance formation is expected to be 9-13 ppg. In order to maintain hole stability, mud weights up to 13 ppg may be utilized.

An electronic pit volume totalizer (PVT) will be utilized on the circulating system, to monitor pit volume, flow rate, pump pressure and stroke rate.

Sufficient mud materials to maintain mud properties and meet minimum lost circulation and weight increase requirements will be kept at the wellsite at all times.

7. Auxiliary well control and monitoring equipment:

- (A) A kelly cock will be kept in the drill string at all times.
- (B) A full opening drill pipe-stabbing valve (inside BOP) with proper drill pipe connections will be kept on the rig floor at all times.
- (C) H2S monitoring and detection equipment will be utilized from surface casing point to TD.
- (D) A wear bushing will be installed in the wellhead prior to drilling out of the surface casing.

8. Logging, testing and coring program:

GR–CCL–CNL Will be run in cased hole during completions phase of operations. Open-hole logs are not planned for this well.

9. Abnormal conditions, pressures, temperatures and potential hazards:



The estimated bottom-hole temperature at 11,475' TVD (deepest point of the well) is 190F with an estimated maximum bottom-hole pressure (BHP) at the same point of 7,757' psig (based on 13 ppg MW). Hydrogen Sulfide may be present in the area. All necessary precautions will be taken before drilling operations commence. See Hydrogen Sulfide Plan below:

10. Hydrogen Sulfide Plan:

- A. All personnel shall receive proper awareness H2S training.
- B. Briefing Area: two perpendicular areas will be designated by signs and readily accessible.
- C. Required Emergency Equipment
 - a. Well Control Equipment
 - i. Flare line 150' from wellhead to be ignited by auto ignition sparking system.
 - ii. Choke manifold with a remotely operated hydraulic choke.
 - iii. Mud/gas separator
 - b. Protective equipment for essential personnel
 - i. Breathing Apparatus
 1. Rescue packs (SCBA) – 1 unit shall be placed at each briefing area, 2 shall be stored in a safety trailer on site.
 2. Work/Escapes packs – 4 packs shall be stored on the rig floor with sufficient air hose not to restrict work activity
 3. Emergency Escape Packs – 4 packs shall be stored in the doghouse for emergency evacuation.
 - ii. Auxiliary Rescue Equipment
 1. Stretcher
 2. Two OSHA full body harnesses
 3. 100 feet of 5/8 inches OSHA approved rope
 4. 1-20# class ABC fire extinguisher
 - c. H2S Detection and Monitoring Equipment
 - i. A stationary detector with three sensors will be placed in the doghouse if equipped, set to visually alarm at 10 ppm and audible at 14 ppm. The detector will be calibrated a minimum of every 30 days or as needed. The sensors will be placed in the following places:
 1. Rig Floor
 2. Below Rig Floor / Near BOPs
 3. End of flow line or where well bore fluid is being discharged (near shakers)
 - ii. If H2S is encountered, measured values and formations will be provided to the BLM.
 - d. Visual Warning Systems
 - i. One color code condition sign will be placed at the entrance to the site reflecting the possible conditions at the site.
 - ii. A colored condition flag will be on display, reflecting the current condition at the site at the time.
 - iii. Two windsocks will be placed in strategic locations, visible from all angles.
 - e. Mud Program
 - i. The Mud program will be designed to minimize the volume of H2S circulated to surface. The operator will have the necessary mud products to minimize hazards while drilling in H2S bearing zones.



- f. Metallurgy
 - i. All drill strings, casings, tubing, wellhead, blowout preventer, drilling spool, kill lines, choke manifold and lines, and valves shall be suitable for H₂S service at the anticipated operating pressures to prevent sour sulfide stress cracking.
- g. Communication
 - i. Communication will be via cell phones and walkie talkies on location.

Based on concentrations of offset wells, proximity to main roads, and distance to populated areas, the radius of exposure created by a potential release was determined to be minimal and low enough to not necessitate an H₂S contingency plan. This will be reevaluated during wellbore construction if H₂S is observed and after the well is on production.

11. Anticipated starting date and duration of operations:

The drilling operations on the well should be finished in approximately one month. However, in order to minimize disturbance in the area and to improve efficiency Franklin Mountain is planning to drill all the wells on the pad prior to commence completion operations. To even further reduce the time heavy machinery is used the "batch drilling" method may be used. A batch drilling sequence sundry will be submitted for State approval prior to spud. A drilling rig with walking/skidding capabilities will be used.

12. Disposal/environmental concerns:

- (A) Drilled cuttings will be hauled to and disposed of in a state-certified disposal site.
- (B) Non-hazardous waste mud/cement from the drilling process will also be hauled to and disposed of in a state-certified disposal site.
- (C) Garbage will be hauled to the Pecos City Landfill.
- (D) Sewage (grey water) will be hauled to the Carlsbad City Landfill

13. Wellhead:

A multi-bowl wellhead system will be utilized.

After running the 13 3/8" surface casing, a 13-5/8" BOP/BOPE system with a minimum working pressure of 10,000 psi will be installed on the wellhead system and will be pressure tested to 250 psi low followed by a 5,000 psi pressure test. This pressure test will be repeated at least every 30 days.

The minimum working pressure of the BOP and related BOPE required for drilling below the surface casing shoe shall be 5,000 psi.

The wellhead will be installed by a third party welder while being monitored by WH vendor's representative.

All BOP equipment will be tested utilizing a conventional test plug. Not a cup or J-packer type.

A solid steel body pack-off will be utilized after running and cementing the intermediate casing string. After installation of the first intermediate string the pack-off and lower flanges will be pressure tested to 5000 psi.

Both the surface and intermediate casing strings will be tested as per NMOCD Rules to the one-third of manufacture's rated yield pressure, no less than 600 psi, but not greater than 1,500 psi.

14. Additional variance requests

- A. Casing.



**FRANKLIN MOUNTAIN
ENERGY**

1. Variance is requested to wave/reduce the centralizer requirements for the 7" and 5 ½" production casing due to the tight clearance with 8 ¾" hole.



Franklin Mountain Energy LLC

PV_Lea County, NM(N83-NME3001)

Ball Mid Pad

(M02) Ball State Com 802H - Slot (M02) BLSC 802H

802H

Plan: APD-Rev01

Standard Planning Report - Geographic

16 March, 2024



Planning Report - Geographic

Database:	TZ USA 17.2	Local Co-ordinate Reference:	Well (M02) Ball State Com 802H - Slot (M02) BLSC 802H
Company:	Franklin Mountain Energy LLC	TVD Reference:	3925+30 @ 3955.00usft
Project:	PV_Lea County, NM(N83-NME3001)	MD Reference:	3925+30 @ 3955.00usft
Site:	Ball Mid Pad	North Reference:	Grid
Well:	(M02) Ball State Com 802H	Survey Calculation Method:	Minimum Curvature
Wellbore:	802H		
Design:	APD-Rev01		

Project	PV_Lea County, NM(N83-NME3001)		
Map System:	US State Plane 1983	System Datum:	Mean Sea Level
Geo Datum:	North American Datum 1983		
Map Zone:	New Mexico Eastern Zone		

Site	Ball Mid Pad				
Site Position:		Northing:	622,781.89 usft	Latitude:	32.70917054
From:	Map	Easting:	803,563.39 usft	Longitude:	-103.48079678
Position Uncertainty:	0.00 usft	Slot Radius:	13-3/16 "		

Well	(M02) Ball State Com 802H - Slot (M02) BLSC 802H					
Well Position	+N/-S	0.00 usft	Northing:	622,782.00 usft	Latitude:	32.70917018
	+E/-W	0.00 usft	Easting:	803,593.38 usft	Longitude:	-103.48069929
Position Uncertainty	0.00 usft		Wellhead Elevation:	usft	Ground Level:	3,925.00 usft
Grid Convergence:	0.46 °					

Wellbore	802H				
Magnetics	Model Name	Sample Date	Declination (°)	Dip Angle (°)	Field Strength (nT)
	IGRF2020	3/13/2024	6.22	60.26	47,499.15648135

Design	APD-Rev01			
Audit Notes:				
Version:	Phase:	PLAN	Tie On Depth:	0.00
Vertical Section:	Depth From (TVD) (usft)	+N/-S (usft)	+E/-W (usft)	Direction (°)
	0.00	0.00	0.00	359.46

Plan Survey Tool Program	Date	3/16/2024		
Depth From (usft)	Depth To (usft)	Survey (Wellbore)	Tool Name	Remarks
1	0.00	22,228.61 APD-Rev01 (802H)	MWD+IFR1+MS OWSG MWD + IFR1 + Multi-S	



Planning Report - Geographic

Database:	TZ USA 17.2	Local Co-ordinate Reference:	Well (M02) Ball State Com 802H - Slot (M02) BLSC 802H
Company:	Franklin Mountain Energy LLC	TVD Reference:	3925+30 @ 3955.00usft
Project:	PV_Lea County, NM(N83-NME3001)	MD Reference:	3925+30 @ 3955.00usft
Site:	Ball Mid Pad	North Reference:	Grid
Well:	(M02) Ball State Com 802H	Survey Calculation Method:	Minimum Curvature
Wellbore:	802H		
Design:	APD-Rev01		

Plan Sections										
Measured Depth (usft)	Inclination (°)	Azimuth (°)	Vertical Depth (usft)	+N/-S (usft)	+E/-W (usft)	Dogleg Rate (°/100usft)	Build Rate (°/100usft)	Turn Rate (°/100usft)	TFO (°)	Target
0.00	0.00	0.00	0.00	0.00	0.00	0.00	0.00	0.00	0.00	
2,000.00	0.00	0.00	2,000.00	0.00	0.00	0.00	0.00	0.00	0.00	
2,554.77	8.32	301.81	2,552.82	21.20	-34.18	1.50	1.50	0.00	301.81	
6,413.34	8.32	301.81	6,370.77	315.56	-508.74	0.00	0.00	0.00	0.00	
7,245.50	0.00	0.00	7,200.00	347.36	-560.00	1.00	-1.00	0.00	180.00	
10,947.54	0.00	0.00	10,902.04	347.36	-560.00	0.00	0.00	0.00	0.00	
11,847.54	90.00	352.40	11,475.00	915.28	-635.78	10.00	10.00	0.00	352.40	
12,200.55	90.00	359.46	11,475.00	1,267.19	-660.82	2.00	0.00	2.00	90.00	
22,228.61	90.00	359.46	11,475.00	11,294.80	-755.28	0.00	0.00	0.00	0.00	02-PBHL(BLSC-802H)



Planning Report - Geographic

Database:	TZ USA 17.2	Local Co-ordinate Reference:	Well (M02) Ball State Com 802H - Slot (M02) BLSC 802H
Company:	Franklin Mountain Energy LLC	TVD Reference:	3925+30 @ 3955.00usft
Project:	PV_Lea County, NM(N83-NME3001)	MD Reference:	3925+30 @ 3955.00usft
Site:	Ball Mid Pad	North Reference:	Grid
Well:	(M02) Ball State Com 802H	Survey Calculation Method:	Minimum Curvature
Wellbore:	802H		
Design:	APD-Rev01		

Planned Survey										
Measured Depth (usft)	Inclination (°)	Azimuth (°)	Vertical Depth (usft)	+N/-S (usft)	+E/-W (usft)	Map Northing (usft)	Map Easting (usft)	Latitude	Longitude	
0.00	0.00	0.00	0.00	0.00	0.00	622,782.00	803,593.38	32.70917018	-103.48069929	
30.00	0.00	0.00	30.00	0.00	0.00	622,782.00	803,593.38	32.70917018	-103.48069929	
Cenozoic Alluvium (surface)										
100.00	0.00	0.00	100.00	0.00	0.00	622,782.00	803,593.38	32.70917018	-103.48069929	
200.00	0.00	0.00	200.00	0.00	0.00	622,782.00	803,593.38	32.70917018	-103.48069929	
300.00	0.00	0.00	300.00	0.00	0.00	622,782.00	803,593.38	32.70917018	-103.48069929	
400.00	0.00	0.00	400.00	0.00	0.00	622,782.00	803,593.38	32.70917018	-103.48069929	
500.00	0.00	0.00	500.00	0.00	0.00	622,782.00	803,593.38	32.70917018	-103.48069929	
600.00	0.00	0.00	600.00	0.00	0.00	622,782.00	803,593.38	32.70917018	-103.48069929	
700.00	0.00	0.00	700.00	0.00	0.00	622,782.00	803,593.38	32.70917018	-103.48069929	
800.00	0.00	0.00	800.00	0.00	0.00	622,782.00	803,593.38	32.70917018	-103.48069929	
900.00	0.00	0.00	900.00	0.00	0.00	622,782.00	803,593.38	32.70917018	-103.48069929	
1,000.00	0.00	0.00	1,000.00	0.00	0.00	622,782.00	803,593.38	32.70917018	-103.48069929	
1,100.00	0.00	0.00	1,100.00	0.00	0.00	622,782.00	803,593.38	32.70917018	-103.48069929	
1,200.00	0.00	0.00	1,200.00	0.00	0.00	622,782.00	803,593.38	32.70917018	-103.48069929	
1,300.00	0.00	0.00	1,300.00	0.00	0.00	622,782.00	803,593.38	32.70917018	-103.48069929	
1,400.00	0.00	0.00	1,400.00	0.00	0.00	622,782.00	803,593.38	32.70917018	-103.48069929	
1,500.00	0.00	0.00	1,500.00	0.00	0.00	622,782.00	803,593.38	32.70917018	-103.48069929	
1,600.00	0.00	0.00	1,600.00	0.00	0.00	622,782.00	803,593.38	32.70917018	-103.48069929	
1,700.00	0.00	0.00	1,700.00	0.00	0.00	622,782.00	803,593.38	32.70917018	-103.48069929	
1,800.00	0.00	0.00	1,800.00	0.00	0.00	622,782.00	803,593.38	32.70917018	-103.48069929	
1,866.00	0.00	0.00	1,866.00	0.00	0.00	622,782.00	803,593.38	32.70917018	-103.48069929	
Rustler										
1,900.00	0.00	0.00	1,900.00	0.00	0.00	622,782.00	803,593.38	32.70917018	-103.48069929	
2,000.00	0.00	0.00	2,000.00	0.00	0.00	622,782.00	803,593.38	32.70917018	-103.48069929	
2,100.00	1.50	301.81	2,099.99	0.69	-1.11	622,782.69	803,592.27	32.70917210	-103.48070289	
2,196.09	2.94	301.81	2,196.00	2.65	-4.28	622,784.66	803,589.10	32.70917756	-103.48071312	
Salado										
2,200.00	3.00	301.81	2,199.91	2.76	-4.45	622,784.76	803,588.93	32.70917786	-103.48071368	
2,300.00	4.50	301.81	2,299.69	6.21	-10.01	622,788.21	803,583.37	32.70918746	-103.48073165	
2,400.00	6.00	301.81	2,399.27	11.03	-17.78	622,793.03	803,575.60	32.70920088	-103.48075681	
2,500.00	7.50	301.81	2,498.57	17.23	-27.77	622,799.23	803,565.61	32.70921813	-103.48078911	
2,554.77	8.32	301.81	2,552.82	21.20	-34.18	622,803.20	803,559.20	32.70922919	-103.48080983	
2,600.00	8.32	301.81	2,597.58	24.65	-39.74	622,806.65	803,553.64	32.70923880	-103.48082783	
2,700.00	8.32	301.81	2,696.52	32.28	-52.04	622,814.28	803,541.34	32.70926004	-103.48086761	
2,800.00	8.32	301.81	2,795.47	39.91	-64.34	622,821.91	803,529.04	32.70928128	-103.48090739	
2,900.00	8.32	301.81	2,894.42	47.54	-76.63	622,829.54	803,516.74	32.70930252	-103.48094717	
3,000.00	8.32	301.81	2,993.36	55.16	-88.93	622,837.17	803,504.44	32.70932376	-103.48098696	
3,100.00	8.32	301.81	3,092.31	62.79	-101.23	622,844.80	803,492.15	32.70934499	-103.48102674	
3,178.52	8.32	301.81	3,170.00	68.78	-110.89	622,850.79	803,482.49	32.70936167	-103.48105797	
Base Salt										
3,200.00	8.32	301.81	3,191.26	70.42	-113.53	622,852.43	803,479.85	32.70936623	-103.48106652	
3,300.00	8.32	301.81	3,290.21	78.05	-125.83	622,860.05	803,467.55	32.70938747	-103.48110630	
3,400.00	8.32	301.81	3,389.15	85.68	-138.13	622,867.68	803,455.25	32.70940871	-103.48114609	
3,482.72	8.32	301.81	3,471.00	91.99	-148.30	622,873.99	803,445.08	32.70942628	-103.48117899	
Yates										
3,500.00	8.32	301.81	3,488.10	93.31	-150.43	622,875.31	803,442.95	32.70942995	-103.48118587	
3,600.00	8.32	301.81	3,587.05	100.94	-162.73	622,882.94	803,430.65	32.70945119	-103.48122565	
3,700.00	8.32	301.81	3,685.99	108.57	-175.03	622,890.57	803,418.35	32.70947243	-103.48126543	
3,800.00	8.32	301.81	3,784.94	116.19	-187.32	622,898.20	803,406.05	32.70949367	-103.48130522	
3,900.00	8.32	301.81	3,883.89	123.82	-199.62	622,905.83	803,393.75	32.70951490	-103.48134500	
3,938.52	8.32	301.81	3,922.00	126.76	-204.36	622,908.77	803,389.02	32.70952308	-103.48136032	
Seven Rivers										



Planning Report - Geographic

Database:	TZ USA 17.2	Local Co-ordinate Reference:	Well (M02) Ball State Com 802H - Slot (M02) BLSC 802H
Company:	Franklin Mountain Energy LLC	TVD Reference:	3925+30 @ 3955.00usft
Project:	PV_Lea County, NM(N83-NME3001)	MD Reference:	3925+30 @ 3955.00usft
Site:	Ball Mid Pad	North Reference:	Grid
Well:	(M02) Ball State Com 802H	Survey Calculation Method:	Minimum Curvature
Wellbore:	802H		
Design:	APD-Rev01		

Planned Survey										
Measured Depth (usft)	Inclination (°)	Azimuth (°)	Vertical Depth (usft)	+N/-S (usft)	+E/-W (usft)	Map Northing (usft)	Map Easting (usft)	Latitude	Longitude	
4,000.00	8.32	301.81	3,982.84	131.45	-211.92	622,913.46	803,381.46	32.70953614	-103.48138478	
4,100.00	8.32	301.81	4,081.78	139.08	-224.22	622,921.09	803,369.16	32.70955738	-103.48142456	
4,200.00	8.32	301.81	4,180.73	146.71	-236.52	622,928.71	803,356.86	32.70957862	-103.48146435	
4,300.00	8.32	301.81	4,279.68	154.34	-248.82	622,936.34	803,344.56	32.70959986	-103.48150413	
4,400.00	8.32	301.81	4,378.62	161.97	-261.12	622,943.97	803,332.26	32.70962110	-103.48154391	
4,500.00	8.32	301.81	4,477.57	169.60	-273.42	622,951.60	803,319.96	32.70964234	-103.48158370	
4,600.00	8.32	301.81	4,576.52	177.23	-285.72	622,959.23	803,307.66	32.70966357	-103.48162348	
4,667.19	8.32	301.81	4,643.00	182.35	-293.98	622,964.36	803,299.40	32.70967784	-103.48165021	
Queen										
4,700.00	8.32	301.81	4,675.47	184.85	-298.01	622,966.86	803,295.36	32.70968481	-103.48166326	
4,800.00	8.32	301.81	4,774.41	192.48	-310.31	622,974.49	803,283.06	32.70970605	-103.48170304	
4,900.00	8.32	301.81	4,873.36	200.11	-322.61	622,982.12	803,270.77	32.70972729	-103.48174283	
5,000.00	8.32	301.81	4,972.31	207.74	-334.91	622,989.74	803,258.47	32.70974853	-103.48178261	
5,100.00	8.32	301.81	5,071.25	215.37	-347.21	622,997.37	803,246.17	32.70976977	-103.48182239	
5,200.00	8.32	301.81	5,170.20	223.00	-359.51	623,005.00	803,233.87	32.70979101	-103.48186217	
5,300.00	8.32	301.81	5,269.15	230.63	-371.81	623,012.63	803,221.57	32.70981224	-103.48190196	
5,400.00	8.32	301.81	5,368.10	238.26	-384.11	623,020.26	803,209.27	32.70983348	-103.48194174	
5,500.00	8.32	301.81	5,467.04	245.88	-396.41	623,027.89	803,196.97	32.70985472	-103.48198152	
5,600.00	8.32	301.81	5,565.99	253.51	-408.70	623,035.52	803,184.67	32.70987596	-103.48202131	
5,700.00	8.32	301.81	5,664.94	261.14	-421.00	623,043.15	803,172.37	32.70989720	-103.48206109	
5,800.00	8.32	301.81	5,763.88	268.77	-433.30	623,050.78	803,160.08	32.70991844	-103.48210087	
5,900.00	8.32	301.81	5,862.83	276.40	-445.60	623,058.40	803,147.78	32.70993967	-103.48214066	
6,000.00	8.32	301.81	5,961.78	284.03	-457.90	623,066.03	803,135.48	32.70996091	-103.48218044	
6,016.39	8.32	301.81	5,978.00	285.28	-459.92	623,067.28	803,133.46	32.70996439	-103.48218696	
Delaware Mtn Group										
6,100.00	8.32	301.81	6,060.73	291.66	-470.20	623,073.66	803,123.18	32.70998215	-103.48222022	
6,200.00	8.32	301.81	6,159.67	299.29	-482.50	623,081.29	803,110.88	32.71000339	-103.48226000	
6,300.00	8.32	301.81	6,258.62	306.92	-494.80	623,088.92	803,098.58	32.71002463	-103.48229979	
6,400.00	8.32	301.81	6,357.57	314.54	-507.10	623,096.55	803,086.28	32.71004587	-103.48233957	
6,413.34	8.32	301.81	6,370.77	315.56	-508.74	623,097.57	803,084.64	32.71004870	-103.48234488	
6,500.00	7.45	301.81	6,456.61	321.83	-518.84	623,103.84	803,074.53	32.71006615	-103.48237757	
6,600.00	6.45	301.81	6,555.87	328.21	-529.13	623,110.22	803,064.24	32.71008392	-103.48241085	
6,700.00	5.45	301.81	6,655.33	333.68	-537.95	623,115.69	803,055.43	32.71009915	-103.48243937	
6,800.00	4.45	301.81	6,754.95	338.24	-545.29	623,120.24	803,048.09	32.71011182	-103.48246311	
6,900.00	3.45	301.81	6,854.71	341.87	-551.15	623,123.87	803,042.23	32.71012194	-103.48248207	
7,000.00	2.45	301.81	6,954.58	344.59	-555.53	623,126.59	803,037.85	32.71012951	-103.48249624	
7,100.00	1.45	301.81	7,054.52	346.39	-558.43	623,128.39	803,034.95	32.71013451	-103.48250562	
7,200.00	0.45	301.81	7,154.50	347.26	-559.85	623,129.27	803,033.53	32.71013696	-103.48251020	
7,245.50	0.00	0.00	7,200.00	347.36	-560.00	623,129.36	803,033.38	32.71013722	-103.48251070	
7,300.00	0.00	0.00	7,254.50	347.36	-560.00	623,129.36	803,033.38	32.71013722	-103.48251070	
7,400.00	0.00	0.00	7,354.50	347.36	-560.00	623,129.36	803,033.38	32.71013722	-103.48251070	
7,500.00	0.00	0.00	7,454.50	347.36	-560.00	623,129.36	803,033.38	32.71013722	-103.48251070	
7,587.50	0.00	0.00	7,542.00	347.36	-560.00	623,129.36	803,033.38	32.71013722	-103.48251070	
Bone Spring Lime										
7,600.00	0.00	0.00	7,554.50	347.36	-560.00	623,129.36	803,033.38	32.71013722	-103.48251070	
7,700.00	0.00	0.00	7,654.50	347.36	-560.00	623,129.36	803,033.38	32.71013722	-103.48251070	
7,800.00	0.00	0.00	7,754.50	347.36	-560.00	623,129.36	803,033.38	32.71013722	-103.48251070	
7,900.00	0.00	0.00	7,854.50	347.36	-560.00	623,129.36	803,033.38	32.71013722	-103.48251070	
8,000.00	0.00	0.00	7,954.50	347.36	-560.00	623,129.36	803,033.38	32.71013722	-103.48251070	
8,100.00	0.00	0.00	8,054.50	347.36	-560.00	623,129.36	803,033.38	32.71013722	-103.48251070	
8,200.00	0.00	0.00	8,154.50	347.36	-560.00	623,129.36	803,033.38	32.71013722	-103.48251070	
8,300.00	0.00	0.00	8,254.50	347.36	-560.00	623,129.36	803,033.38	32.71013722	-103.48251070	
8,400.00	0.00	0.00	8,354.50	347.36	-560.00	623,129.36	803,033.38	32.71013722	-103.48251070	



Planning Report - Geographic

Database:	TZ USA 17.2	Local Co-ordinate Reference:	Well (M02) Ball State Com 802H - Slot (M02) BLSC 802H
Company:	Franklin Mountain Energy LLC	TVD Reference:	3925+30 @ 3955.00usft
Project:	PV_Lea County, NM(N83-NME3001)	MD Reference:	3925+30 @ 3955.00usft
Site:	Ball Mid Pad	North Reference:	Grid
Well:	(M02) Ball State Com 802H	Survey Calculation Method:	Minimum Curvature
Wellbore:	802H		
Design:	APD-Rev01		

Planned Survey										
Measured Depth (usft)	Inclination (°)	Azimuth (°)	Vertical Depth (usft)	+N/-S (usft)	+E/-W (usft)	Map Northing (usft)	Map Easting (usft)	Latitude	Longitude	
8,500.00	0.00	0.00	8,454.50	347.36	-560.00	623,129.36	803,033.38	32.71013722	-103.48251070	
8,600.00	0.00	0.00	8,554.50	347.36	-560.00	623,129.36	803,033.38	32.71013722	-103.48251070	
8,700.00	0.00	0.00	8,654.50	347.36	-560.00	623,129.36	803,033.38	32.71013722	-103.48251070	
8,800.00	0.00	0.00	8,754.50	347.36	-560.00	623,129.36	803,033.38	32.71013722	-103.48251070	
8,900.00	0.00	0.00	8,854.50	347.36	-560.00	623,129.36	803,033.38	32.71013722	-103.48251070	
9,000.00	0.00	0.00	8,954.50	347.36	-560.00	623,129.36	803,033.38	32.71013722	-103.48251070	
9,100.00	0.00	0.00	9,054.50	347.36	-560.00	623,129.36	803,033.38	32.71013722	-103.48251070	
9,182.50	0.00	0.00	9,137.00	347.36	-560.00	623,129.36	803,033.38	32.71013722	-103.48251070	
First Bone Spring Sand										
9,200.00	0.00	0.00	9,154.50	347.36	-560.00	623,129.36	803,033.38	32.71013722	-103.48251070	
9,300.00	0.00	0.00	9,254.50	347.36	-560.00	623,129.36	803,033.38	32.71013722	-103.48251070	
9,382.50	0.00	0.00	9,337.00	347.36	-560.00	623,129.36	803,033.38	32.71013722	-103.48251070	
Second Bone Spring Carbonate										
9,400.00	0.00	0.00	9,354.50	347.36	-560.00	623,129.36	803,033.38	32.71013722	-103.48251070	
9,500.00	0.00	0.00	9,454.50	347.36	-560.00	623,129.36	803,033.38	32.71013722	-103.48251070	
9,600.00	0.00	0.00	9,554.50	347.36	-560.00	623,129.36	803,033.38	32.71013722	-103.48251070	
9,695.50	0.00	0.00	9,650.00	347.36	-560.00	623,129.36	803,033.38	32.71013722	-103.48251070	
Second Bone Spring Sand										
9,700.00	0.00	0.00	9,654.50	347.36	-560.00	623,129.36	803,033.38	32.71013722	-103.48251070	
9,800.00	0.00	0.00	9,754.50	347.36	-560.00	623,129.36	803,033.38	32.71013722	-103.48251070	
9,900.00	0.00	0.00	9,854.50	347.36	-560.00	623,129.36	803,033.38	32.71013722	-103.48251070	
10,000.00	0.00	0.00	9,954.50	347.36	-560.00	623,129.36	803,033.38	32.71013722	-103.48251070	
10,100.00	0.00	0.00	10,054.50	347.36	-560.00	623,129.36	803,033.38	32.71013722	-103.48251070	
10,200.00	0.00	0.00	10,154.50	347.36	-560.00	623,129.36	803,033.38	32.71013722	-103.48251070	
10,219.50	0.00	0.00	10,174.00	347.36	-560.00	623,129.36	803,033.38	32.71013722	-103.48251070	
Third Bone Spring Carbonate										
10,293.50	0.00	0.00	10,248.00	347.36	-560.00	623,129.36	803,033.38	32.71013722	-103.48251070	
Third Bone Spring Sand										
10,300.00	0.00	0.00	10,254.50	347.36	-560.00	623,129.36	803,033.38	32.71013722	-103.48251070	
10,400.00	0.00	0.00	10,354.50	347.36	-560.00	623,129.36	803,033.38	32.71013722	-103.48251070	
10,498.50	0.00	0.00	10,453.00	347.36	-560.00	623,129.36	803,033.38	32.71013722	-103.48251070	
Wolfcamp										
10,500.00	0.00	0.00	10,454.50	347.36	-560.00	623,129.36	803,033.38	32.71013722	-103.48251070	
10,600.00	0.00	0.00	10,554.50	347.36	-560.00	623,129.36	803,033.38	32.71013722	-103.48251070	
10,700.00	0.00	0.00	10,654.50	347.36	-560.00	623,129.36	803,033.38	32.71013722	-103.48251070	
10,800.00	0.00	0.00	10,754.50	347.36	-560.00	623,129.36	803,033.38	32.71013722	-103.48251070	
10,900.00	0.00	0.00	10,854.50	347.36	-560.00	623,129.36	803,033.38	32.71013722	-103.48251070	
10,947.54	0.00	0.00	10,902.04	347.36	-560.00	623,129.36	803,033.38	32.71013722	-103.48251070	
KOP: 10947.54' MD/ 352.62' VS/10902.04' TVD										
10,950.00	0.25	352.40	10,904.50	347.37	-560.00	623,129.37	803,033.38	32.71013724	-103.48251070	
11,000.00	5.25	352.40	10,954.43	349.74	-560.32	623,131.74	803,033.06	32.71014377	-103.48251167	
11,050.00	10.25	352.40	11,003.96	356.42	-561.21	623,138.42	803,032.17	32.71016214	-103.48251439	
11,068.39	12.09	352.40	11,022.00	359.95	-561.68	623,141.95	803,031.70	32.71017185	-103.48251583	
Wolfcamp B										
11,100.00	15.25	352.40	11,052.71	367.35	-562.67	623,149.35	803,030.71	32.71019222	-103.48251885	
11,150.00	20.25	352.40	11,100.32	382.45	-564.68	623,164.45	803,028.70	32.71023377	-103.48252500	
11,200.00	25.25	352.40	11,146.41	401.61	-567.24	623,183.61	803,026.14	32.71028647	-103.48253281	
11,250.00	30.25	352.40	11,190.65	424.67	-570.32	623,206.68	803,023.06	32.71034994	-103.48254222	
11,300.00	35.25	352.40	11,232.69	451.47	-573.89	623,233.48	803,019.49	32.71042367	-103.48255314	
11,350.00	40.25	352.40	11,272.21	481.80	-577.94	623,263.81	803,015.44	32.71050712	-103.48256551	
11,400.00	45.25	352.40	11,308.92	515.43	-582.43	623,297.44	803,010.95	32.71059965	-103.48257922	
11,450.00	50.25	352.40	11,342.53	552.10	-587.32	623,334.11	803,006.06	32.71070054	-103.48259417	
11,500.00	55.25	352.40	11,372.79	591.54	-592.58	623,373.54	803,000.80	32.71080904	-103.48261024	



Planning Report - Geographic

Database:	TZ USA 17.2	Local Co-ordinate Reference:	Well (M02) Ball State Com 802H - Slot (M02) BLSC 802H
Company:	Franklin Mountain Energy LLC	TVD Reference:	3925+30 @ 3955.00usft
Project:	PV_Lea County, NM(N83-NME3001)	MD Reference:	3925+30 @ 3955.00usft
Site:	Ball Mid Pad	North Reference:	Grid
Well:	(M02) Ball State Com 802H	Survey Calculation Method:	Minimum Curvature
Wellbore:	802H		
Design:	APD-Rev01		

Planned Survey										
Measured Depth (usft)	Inclination (°)	Azimuth (°)	Vertical Depth (usft)	+N/-S (usft)	+E/-W (usft)	Map Northing (usft)	Map Easting (usft)	Latitude	Longitude	
11,550.00	60.25	352.40	11,399.46	633.44	-598.17	623,415.44	802,995.21	32.71092432	-103.48262733	
11,600.00	65.25	352.40	11,422.35	677.49	-604.05	623,459.49	802,989.33	32.71104551	-103.48264528	
11,650.00	70.25	352.40	11,441.28	723.34	-610.17	623,505.34	802,983.21	32.71117167	-103.48266398	
11,700.00	75.25	352.40	11,456.11	770.66	-616.48	623,552.66	802,976.90	32.71130185	-103.48268327	
11,750.00	80.25	352.40	11,466.72	819.07	-622.94	623,601.08	802,970.44	32.71143506	-103.48270300	
11,800.00	85.25	352.40	11,473.03	868.22	-629.50	623,650.22	802,963.88	32.71157028	-103.48272304	
11,847.54	90.00	352.40	11,475.00	915.28	-635.78	623,697.29	802,957.60	32.71169977	-103.48274223	
EOC: 11847.54' MD/ 921.24' VS/11475.00' TVD - HZ Target										
11,853.98	90.00	352.53	11,475.00	921.67	-636.62	623,703.68	802,956.76	32.71171735	-103.48274481	
100FLL: 11853.98' MD/ 927.63' VS/11475.00' TVD										
11,857.20	90.00	352.59	11,475.00	924.86	-637.04	623,706.87	802,956.34	32.71172613	-103.48274608	
01-T98(BLSC-802H)										
11,900.00	90.00	353.45	11,475.00	967.35	-642.24	623,749.35	802,951.14	32.71184301	-103.48276188	
12,000.00	90.00	355.45	11,475.00	1,066.87	-651.91	623,848.88	802,941.47	32.71211676	-103.48279073	
12,100.00	90.00	357.45	11,475.00	1,166.68	-658.10	623,948.68	802,935.27	32.71239119	-103.48280826	
12,200.55	90.00	359.46	11,475.00	1,267.19	-660.82	624,049.19	802,932.56	32.71266748	-103.48281445	
12,300.00	90.00	359.46	11,475.00	1,366.63	-661.75	624,148.64	802,931.63	32.71294082	-103.48281490	
12,400.00	90.00	359.46	11,475.00	1,466.63	-662.69	624,248.63	802,930.68	32.71321567	-103.48281536	
12,500.00	90.00	359.46	11,475.00	1,566.62	-663.64	624,348.63	802,929.74	32.71349052	-103.48281581	
12,600.00	90.00	359.46	11,475.00	1,666.62	-664.58	624,448.62	802,928.80	32.71376536	-103.48281626	
12,700.00	90.00	359.46	11,475.00	1,766.61	-665.52	624,548.62	802,927.86	32.71404021	-103.48281672	
12,800.00	90.00	359.46	11,475.00	1,866.61	-666.46	624,648.61	802,926.92	32.71431506	-103.48281717	
12,900.00	90.00	359.46	11,475.00	1,966.60	-667.40	624,748.61	802,925.97	32.71458991	-103.48281763	
13,000.00	90.00	359.46	11,475.00	2,066.60	-668.35	624,848.60	802,925.03	32.71486475	-103.48281808	
13,100.00	90.00	359.46	11,475.00	2,166.60	-669.29	624,948.60	802,924.09	32.71513960	-103.48281853	
13,200.00	90.00	359.46	11,475.00	2,266.59	-670.23	625,048.60	802,923.15	32.71541445	-103.48281899	
13,300.00	90.00	359.46	11,475.00	2,366.59	-671.17	625,148.59	802,922.21	32.71568930	-103.48281944	
13,400.00	90.00	359.46	11,475.00	2,466.58	-672.11	625,248.59	802,921.26	32.71596414	-103.48281990	
13,500.00	90.00	359.46	11,475.00	2,566.58	-673.06	625,348.58	802,920.32	32.71623899	-103.48282035	
13,600.00	90.00	359.46	11,475.00	2,666.57	-674.00	625,448.58	802,919.38	32.71651384	-103.48282081	
13,700.00	90.00	359.46	11,475.00	2,766.57	-674.94	625,548.57	802,918.44	32.71678869	-103.48282126	
13,800.00	90.00	359.46	11,475.00	2,866.56	-675.88	625,648.57	802,917.50	32.71706353	-103.48282171	
13,900.00	90.00	359.46	11,475.00	2,966.56	-676.82	625,748.56	802,916.55	32.71733838	-103.48282217	
14,000.00	90.00	359.46	11,475.00	3,066.56	-677.77	625,848.56	802,915.61	32.71761323	-103.48282262	
14,100.00	90.00	359.46	11,475.00	3,166.55	-678.71	625,948.56	802,914.67	32.71788808	-103.48282308	
14,200.00	90.00	359.46	11,475.00	3,266.55	-679.65	626,048.55	802,913.73	32.71816292	-103.48282353	
14,300.00	90.00	359.46	11,475.00	3,366.54	-680.59	626,148.55	802,912.79	32.71843777	-103.48282398	
14,400.00	90.00	359.46	11,475.00	3,466.54	-681.53	626,248.54	802,911.84	32.71871262	-103.48282444	
14,500.00	90.00	359.46	11,475.00	3,566.53	-682.48	626,348.54	802,910.90	32.71898746	-103.48282489	
14,600.00	90.00	359.46	11,475.00	3,666.53	-683.42	626,448.53	802,909.96	32.71926231	-103.48282535	
14,700.00	90.00	359.46	11,475.00	3,766.53	-684.36	626,548.53	802,909.02	32.71953716	-103.48282580	
14,800.00	90.00	359.46	11,475.00	3,866.52	-685.30	626,648.52	802,908.08	32.71981201	-103.48282625	
14,900.00	90.00	359.46	11,475.00	3,966.52	-686.24	626,748.52	802,907.13	32.72008685	-103.48282671	
15,000.00	90.00	359.46	11,475.00	4,066.51	-687.19	626,848.52	802,906.19	32.72036170	-103.48282716	
15,100.00	90.00	359.46	11,475.00	4,166.51	-688.13	626,948.51	802,905.25	32.72063655	-103.48282761	
15,200.00	90.00	359.46	11,475.00	4,266.50	-689.07	627,048.51	802,904.31	32.72091140	-103.48282807	
15,300.00	90.00	359.46	11,475.00	4,366.50	-690.01	627,148.50	802,903.37	32.72118624	-103.48282852	
15,400.00	90.00	359.46	11,475.00	4,466.49	-690.95	627,248.50	802,902.42	32.72146109	-103.48282898	
15,500.00	90.00	359.46	11,475.00	4,566.49	-691.90	627,348.49	802,901.48	32.72173594	-103.48282943	
15,600.00	90.00	359.46	11,475.00	4,666.49	-692.84	627,448.49	802,900.54	32.72201078	-103.48282988	
15,700.00	90.00	359.46	11,475.00	4,766.48	-693.78	627,548.48	802,899.60	32.72228563	-103.48283034	
15,800.00	90.00	359.46	11,475.00	4,866.48	-694.72	627,648.48	802,898.66	32.72256048	-103.48283079	
15,900.00	90.00	359.46	11,475.00	4,966.47	-695.66	627,748.48	802,897.71	32.72283532	-103.48283124	



Planning Report - Geographic

Database:	TZ USA 17.2	Local Co-ordinate Reference:	Well (M02) Ball State Com 802H - Slot (M02) BLSC 802H
Company:	Franklin Mountain Energy LLC	TVD Reference:	3925+30 @ 3955.00usft
Project:	PV_Lea County, NM(N83-NME3001)	MD Reference:	3925+30 @ 3955.00usft
Site:	Ball Mid Pad	North Reference:	Grid
Well:	(M02) Ball State Com 802H	Survey Calculation Method:	Minimum Curvature
Wellbore:	802H		
Design:	APD-Rev01		

Planned Survey										
Measured Depth (usft)	Inclination (°)	Azimuth (°)	Vertical Depth (usft)	+N/-S (usft)	+E/-W (usft)	Map Northing (usft)	Map Easting (usft)	Latitude	Longitude	
16,000.00	90.00	359.46	11,475.00	5,066.47	-696.61	627,848.47	802,896.77	32.72311017	-103.48283170	
16,100.00	90.00	359.46	11,475.00	5,166.46	-697.55	627,948.47	802,895.83	32.72338502	-103.48283215	
16,200.00	90.00	359.46	11,475.00	5,266.46	-698.49	628,048.46	802,894.89	32.72365987	-103.48283261	
16,300.00	90.00	359.46	11,475.00	5,366.45	-699.43	628,148.46	802,893.95	32.72393471	-103.48283306	
16,400.00	90.00	359.46	11,475.00	5,466.45	-700.37	628,248.45	802,893.00	32.72420956	-103.48283351	
16,500.00	90.00	359.46	11,475.00	5,566.45	-701.32	628,348.45	802,892.06	32.72448441	-103.48283397	
16,600.00	90.00	359.46	11,475.00	5,666.44	-702.26	628,448.44	802,891.12	32.72475925	-103.48283442	
16,700.00	90.00	359.46	11,475.00	5,766.44	-703.20	628,548.44	802,890.18	32.72503410	-103.48283487	
16,800.00	90.00	359.46	11,475.00	5,866.43	-704.14	628,648.44	802,889.24	32.72530895	-103.48283533	
16,900.00	90.00	359.46	11,475.00	5,966.43	-705.08	628,748.43	802,888.29	32.72558380	-103.48283578	
17,000.00	90.00	359.46	11,475.00	6,066.42	-706.03	628,848.43	802,887.35	32.72585864	-103.48283623	
17,100.00	90.00	359.46	11,475.00	6,166.42	-706.97	628,948.42	802,886.41	32.72613349	-103.48283669	
17,200.00	90.00	359.46	11,475.00	6,266.41	-707.91	629,048.42	802,885.47	32.72640834	-103.48283714	
17,300.00	90.00	359.46	11,475.00	6,366.41	-708.85	629,148.41	802,884.53	32.72668318	-103.48283759	
17,400.00	90.00	359.46	11,475.00	6,466.41	-709.79	629,248.41	802,883.58	32.72695803	-103.48283805	
17,500.00	90.00	359.46	11,475.00	6,566.40	-710.74	629,348.40	802,882.64	32.72723288	-103.48283850	
17,600.00	90.00	359.46	11,475.00	6,666.40	-711.68	629,448.40	802,881.70	32.72750772	-103.48283896	
17,700.00	90.00	359.46	11,475.00	6,766.39	-712.62	629,548.40	802,880.76	32.72778257	-103.48283941	
17,800.00	90.00	359.46	11,475.00	6,866.39	-713.56	629,648.39	802,879.82	32.72805742	-103.48283986	
17,900.00	90.00	359.46	11,475.00	6,966.38	-714.50	629,748.39	802,878.87	32.72833226	-103.48284032	
18,000.00	90.00	359.46	11,475.00	7,066.38	-715.45	629,848.38	802,877.93	32.72860711	-103.48284077	
18,100.00	90.00	359.46	11,475.00	7,166.37	-716.39	629,948.38	802,876.99	32.72888196	-103.48284122	
18,200.00	90.00	359.46	11,475.00	7,266.37	-717.33	630,048.37	802,876.05	32.72915680	-103.48284168	
18,300.00	90.00	359.46	11,475.00	7,366.37	-718.27	630,148.37	802,875.11	32.72943165	-103.48284213	
18,400.00	90.00	359.46	11,475.00	7,466.36	-719.21	630,248.36	802,874.16	32.72970650	-103.48284258	
18,500.00	90.00	359.46	11,475.00	7,566.36	-720.16	630,348.36	802,873.22	32.72998135	-103.48284304	
18,600.00	90.00	359.46	11,475.00	7,666.35	-721.10	630,448.36	802,872.28	32.73025619	-103.48284349	
18,700.00	90.00	359.46	11,475.00	7,766.35	-722.04	630,548.35	802,871.34	32.73053104	-103.48284394	
18,800.00	90.00	359.46	11,475.00	7,866.34	-722.98	630,648.35	802,870.40	32.73080589	-103.48284439	
18,900.00	90.00	359.46	11,475.00	7,966.34	-723.92	630,748.34	802,869.45	32.73108073	-103.48284485	
19,000.00	90.00	359.46	11,475.00	8,066.33	-724.87	630,848.34	802,868.51	32.73135558	-103.48284530	
19,100.00	90.00	359.46	11,475.00	8,166.33	-725.81	630,948.33	802,867.57	32.73163043	-103.48284575	
19,200.00	90.00	359.46	11,475.00	8,266.33	-726.75	631,048.33	802,866.63	32.73190527	-103.48284621	
19,300.00	90.00	359.46	11,475.00	8,366.32	-727.69	631,148.32	802,865.69	32.73218012	-103.48284666	
19,400.00	90.00	359.46	11,475.00	8,466.32	-728.63	631,248.32	802,864.74	32.73245497	-103.48284711	
19,500.00	90.00	359.46	11,475.00	8,566.31	-729.58	631,348.32	802,863.80	32.73272981	-103.48284757	
19,600.00	90.00	359.46	11,475.00	8,666.31	-730.52	631,448.31	802,862.86	32.73300466	-103.48284802	
19,700.00	90.00	359.46	11,475.00	8,766.30	-731.46	631,548.31	802,861.92	32.73327951	-103.48284847	
19,800.00	90.00	359.46	11,475.00	8,866.30	-732.40	631,648.30	802,860.98	32.73355435	-103.48284893	
19,900.00	90.00	359.46	11,475.00	8,966.29	-733.34	631,748.30	802,860.03	32.73382920	-103.48284938	
20,000.00	90.00	359.46	11,475.00	9,066.29	-734.29	631,848.29	802,859.09	32.73410405	-103.48284983	
20,100.00	90.00	359.46	11,475.00	9,166.29	-735.23	631,948.29	802,858.15	32.73437889	-103.48285029	
20,200.00	90.00	359.46	11,475.00	9,266.28	-736.17	632,048.29	802,857.21	32.73465374	-103.48285074	
20,300.00	90.00	359.46	11,475.00	9,366.28	-737.11	632,148.28	802,856.27	32.73492859	-103.48285119	
20,400.00	90.00	359.46	11,475.00	9,466.27	-738.05	632,248.28	802,855.32	32.73520343	-103.48285164	
20,500.00	90.00	359.46	11,475.00	9,566.27	-739.00	632,348.27	802,854.38	32.73547828	-103.48285210	
20,600.00	90.00	359.46	11,475.00	9,666.26	-739.94	632,448.27	802,853.44	32.73575312	-103.48285255	
20,700.00	90.00	359.46	11,475.00	9,766.26	-740.88	632,548.26	802,852.50	32.73602797	-103.48285300	
20,800.00	90.00	359.46	11,475.00	9,866.25	-741.82	632,648.26	802,851.56	32.73630282	-103.48285346	
20,900.00	90.00	359.46	11,475.00	9,966.25	-742.76	632,748.25	802,850.61	32.73657766	-103.48285391	
21,000.00	90.00	359.46	11,475.00	10,066.25	-743.71	632,848.25	802,849.67	32.73685251	-103.48285436	
21,100.00	90.00	359.46	11,475.00	10,166.24	-744.65	632,948.25	802,848.73	32.73712736	-103.48285481	
21,200.00	90.00	359.46	11,475.00	10,266.24	-745.59	633,048.24	802,847.79	32.73740220	-103.48285527	
21,300.00	90.00	359.46	11,475.00	10,366.23	-746.53	633,148.24	802,846.85	32.73767705	-103.48285572	



Planning Report - Geographic

Database:	TZ USA 17.2	Local Co-ordinate Reference:	Well (M02) Ball State Com 802H - Slot (M02) BLSC 802H
Company:	Franklin Mountain Energy LLC	TVD Reference:	3925+30 @ 3955.00usft
Project:	PV_Lea County, NM(N83-NME3001)	MD Reference:	3925+30 @ 3955.00usft
Site:	Ball Mid Pad	North Reference:	Grid
Well:	(M02) Ball State Com 802H	Survey Calculation Method:	Minimum Curvature
Wellbore:	802H		
Design:	APD-Rev01		

Planned Survey									
Measured Depth (usft)	Inclination (°)	Azimuth (°)	Vertical Depth (usft)	+N/-S (usft)	+E/-W (usft)	Map Northing (usft)	Map Easting (usft)	Latitude	Longitude
21,400.00	90.00	359.46	11,475.00	10,466.23	-747.47	633,248.23	802,845.90	32.73795190	-103.48285617
21,500.00	90.00	359.46	11,475.00	10,566.22	-748.42	633,348.23	802,844.96	32.73822674	-103.48285663
21,600.00	90.00	359.46	11,475.00	10,666.22	-749.36	633,448.22	802,844.02	32.73850159	-103.48285708
21,700.00	90.00	359.46	11,475.00	10,766.21	-750.30	633,548.22	802,843.08	32.73877644	-103.48285753
21,800.00	90.00	359.46	11,475.00	10,866.21	-751.24	633,648.21	802,842.14	32.73905128	-103.48285798
21,900.00	90.00	359.46	11,475.00	10,966.21	-752.18	633,748.21	802,841.19	32.73932613	-103.48285844
22,000.00	90.00	359.46	11,475.00	11,066.20	-753.13	633,848.21	802,840.25	32.73960098	-103.48285889
22,100.00	90.00	359.46	11,475.00	11,166.20	-754.07	633,948.20	802,839.31	32.73987582	-103.48285934
22,200.00	90.00	359.46	11,475.00	11,266.19	-755.01	634,048.20	802,838.37	32.74015067	-103.48285979
22,228.61	90.00	359.46	11,475.00	11,294.80	-755.28	634,076.80	802,838.10	32.74022930	-103.48285992

TD: 22228.61' MD/ 11301.42' VS/11475.00' TVD - 02-PBHL(BLSC-802H)

Design Targets									
Target Name	Dip Angle (°)	Dip Dir. (°)	TVD (usft)	+N/-S (usft)	+E/-W (usft)	Northing (usft)	Easting (usft)	Latitude	Longitude
02-PBHL(BLSC-802H) - hit/miss target - Shape - Point	0.00	0.00	11,475.00	11,294.80	-755.28	634,076.80	802,838.10	32.74022930	-103.48285992
01-T98(BLSC-802H) - plan misses target center by 20.49usft at 11857.20usft MD (11475.00 TVD, 924.86 N, -637.04 E) - Point	0.00	0.00	11,475.00	922.36	-657.38	623,704.37	802,936.00	32.71171970	-103.48281227

Formations						
Measured Depth (usft)	Vertical Depth (usft)	Name	Lithology	Dip (°)	Dip Direction (°)	
30.00	30.00	Cenozoic Alluvium (surface)				
1,866.00	1,866.00	Rustler				
2,196.09	2,196.00	Salado				
3,178.52	3,170.00	Base Salt				
3,482.72	3,471.00	Yates				
3,938.52	3,922.00	Seven Rivers				
4,667.19	4,643.00	Queen				
6,016.39	5,978.00	Delaware Mtn Group				
7,587.50	7,542.00	Bone Spring Lime				
9,182.50	9,137.00	First Bone Spring Sand				
9,382.50	9,337.00	Second Bone Spring Carbonate				
9,695.50	9,650.00	Second Bone Spring Sand				
10,219.50	10,174.00	Third Bone Spring Carbonate				
10,293.50	10,248.00	Third Bone Spring Sand				
10,498.50	10,453.00	Wolfcamp				
11,068.39	11,022.00	Wolfcamp B				
11,847.54	11,475.00	HZ Target				



Planning Report - Geographic

Database:	TZ USA 17.2	Local Co-ordinate Reference:	Well (M02) Ball State Com 802H - Slot (M02) BLSC 802H
Company:	Franklin Mountain Energy LLC	TVD Reference:	3925+30 @ 3955.00usft
Project:	PV_Lea County, NM(N83-NME3001)	MD Reference:	3925+30 @ 3955.00usft
Site:	Ball Mid Pad	North Reference:	Grid
Well:	(M02) Ball State Com 802H	Survey Calculation Method:	Minimum Curvature
Wellbore:	802H		
Design:	APD-Rev01		

Plan Annotations					
Measured Depth (usft)	Vertical Depth (usft)	Local Coordinates		Comment	
		+N/-S (usft)	+E/-W (usft)		
10,947.54	10,902.04	347.36	-560.00	KOP: 10947.54' MD/ 352.62' VS/10902.04' TVD	
11,847.54	11,475.00	915.29	-635.78	EOC: 11847.54' MD/ 921.24' VS/11475.00' TVD	
11,853.98	11,475.00	921.67	-636.62	100FLL: 11853.98' MD/ 927.63' VS/11475.00' TVD	
22,228.61	11,475.00	11,294.80	-755.28	TD: 22228.61' MD/ 11301.42' VS/11475.00' TVD	

State of New Mexico
 Energy, Minerals and Natural Resources Department

Submit Electronically
 Via E-permitting

Oil Conservation Division
 1220 South St. Francis Dr.
 Santa Fe, NM 87505

NATURAL GAS MANAGEMENT PLAN

This Natural Gas Management Plan must be submitted with each Application for Permit to Drill (APD) for a new or recompleted well.

Section 1 – Plan Description Effective May 25, 2021

I. Operator: Franklin Mountain Energy 3, LLC **OGRID:** 331595 **Date:** 7/3/2024

II. Type: Original Amendment due to 19.15.27.9.D(6)(a) NMAC 19.15.27.9.D(6)(b) NMAC Other.

If Other, please describe: _____

III. Well(s): Provide the following information for each new or recompleted well or set of wells proposed to be drilled or proposed to be recompleted from a single well pad or connected to a central delivery point.

Well Name	API	ULSTR	Footages	Anticipated Oil BBL/D	Anticipated Gas MCF/D	Anticipated Produced Water BBL/D
See Attached Well List						

IV. Central Delivery Point Name: Ball CTB [See 19.15.27.9(D)(1) NMAC]

V. Anticipated Schedule: Provide the following information for each new or recompleted well or set of wells proposed to be drilled or proposed to be recompleted from a single well pad or connected to a central delivery point.

Well Name	API	Spud Date	TD Reached Date	Completion Commencement Date	Initial Flow Back Date	First Production Date
See Attached Well List						

VI. Separation Equipment: Attach a complete description of how Operator will size separation equipment to optimize gas capture.

VII. Operational Practices: Attach a complete description of the actions Operator will take to comply with the requirements of Subsection A through F of 19.15.27.8 NMAC.

VIII. Best Management Practices: Attach a complete description of Operator’s best management practices to minimize venting during active and planned maintenance.

Section 2 – Enhanced Plan

EFFECTIVE APRIL 1, 2022

Beginning April 1, 2022, an operator that is not in compliance with its statewide natural gas capture requirement for the applicable reporting area must complete this section.

Operator certifies that it is not required to complete this section because Operator is in compliance with its statewide natural gas capture requirement for the applicable reporting area.

IX. Anticipated Natural Gas Production:

Well	API	Anticipated Average Natural Gas Rate MCF/D	Anticipated Volume of Natural Gas for the First Year MCF

X. Natural Gas Gathering System (NGGS):

Operator	System	ULSTR of Tie-in	Anticipated Gathering Start Date	Available Maximum Daily Capacity of System Segment Tie-in

XI. Map. Attach an accurate and legible map depicting the location of the well(s), the anticipated pipeline route(s) connecting the production operations to the existing or planned interconnect of the natural gas gathering system(s), and the maximum daily capacity of the segment or portion of the natural gas gathering system(s) to which the well(s) will be connected.

XII. Line Capacity. The natural gas gathering system will will not have capacity to gather 100% of the anticipated natural gas production volume from the well prior to the date of first production.

XIII. Line Pressure. Operator does does not anticipate that its existing well(s) connected to the same segment, or portion, of the natural gas gathering system(s) described above will continue to meet anticipated increases in line pressure caused by the new well(s).

Attach Operator’s plan to manage production in response to the increased line pressure.

XIV. Confidentiality: Operator asserts confidentiality pursuant to Section 71-2-8 NMSA 1978 for the information provided in Section 2 as provided in Paragraph (2) of Subsection D of 19.15.27.9 NMAC, and attaches a full description of the specific information for which confidentiality is asserted and the basis for such assertion.

Section 3 - Certifications

Effective May 25, 2021

Operator certifies that, after reasonable inquiry and based on the available information at the time of submittal:

Operator will be able to connect the well(s) to a natural gas gathering system in the general area with sufficient capacity to transport one hundred percent of the anticipated volume of natural gas produced from the well(s) commencing on the date of first production, taking into account the current and anticipated volumes of produced natural gas from other wells connected to the pipeline gathering system; or

Operator will not be able to connect to a natural gas gathering system in the general area with sufficient capacity to transport one hundred percent of the anticipated volume of natural gas produced from the well(s) commencing on the date of first production, taking into account the current and anticipated volumes of produced natural gas from other wells connected to the pipeline gathering system.

If Operator checks this box, Operator will select one of the following:

Well Shut-In. Operator will shut-in and not produce the well until it submits the certification required by Paragraph (4) of Subsection D of 19.15.27.9 NMAC; or

Venting and Flaring Plan. Operator has attached a venting and flaring plan that evaluates and selects one or more of the potential alternative beneficial uses for the natural gas until a natural gas gathering system is available, including:

- (a) power generation on lease;
- (b) power generation for grid;
- (c) compression on lease;
- (d) liquids removal on lease;
- (e) reinjection for underground storage;
- (f) reinjection for temporary storage;
- (g) reinjection for enhanced oil recovery;
- (h) fuel cell production; and
- (i) other alternative beneficial uses approved by the division.

Section 4 - Notices

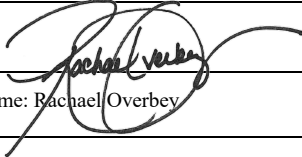
1. If, at any time after Operator submits this Natural Gas Management Plan and before the well is spud:

(a) Operator becomes aware that the natural gas gathering system it planned to connect the well(s) to has become unavailable or will not have capacity to transport one hundred percent of the production from the well(s), no later than 20 days after becoming aware of such information, Operator shall submit for OCD's approval a new or revised venting and flaring plan containing the information specified in Paragraph (5) of Subsection D of 19.15.27.9 NMAC; or

(b) Operator becomes aware that it has, cumulatively for the year, become out of compliance with its baseline natural gas capture rate or natural gas capture requirement, no later than 20 days after becoming aware of such information, Operator shall submit for OCD's approval a new or revised Natural Gas Management Plan for each well it plans to spud during the next 90 days containing the information specified in Paragraph (2) of Subsection D of 19.15.27.9 NMAC, and shall file an update for each Natural Gas Management Plan until Operator is back in compliance with its baseline natural gas capture rate or natural gas capture requirement.

2. OCD may deny or conditionally approve an APD if Operator does not make a certification, fails to submit an adequate venting and flaring plan which includes alternative beneficial uses for the anticipated volume of natural gas produced, or if OCD determines that Operator will not have adequate natural gas takeaway capacity at the time a well will be spud.

I certify that, after reasonable inquiry, the statements in and attached to this Natural Gas Management Plan are true and correct to the best of my knowledge and acknowledge that a false statement may be subject to civil and criminal penalties under the Oil and Gas Act.

Signature: 
Printed Name: Rachael Overbey
Title: Director Operations Planning & Regulatory
E-mail Address: roverbey@fmelle.com
Date: 7/3/2024
Phone: 720-414-7868
OIL CONSERVATION DIVISION (Only applicable when submitted as a standalone form)
Approved By:
Title:
Approval Date:
Conditions of Approval:

NATURAL GAS MANAGEMENT PLAN

III. Well(s): Provide the following information for each new or recompleted well or set of wells proposed to be drilled or proposed to be recompleted from a single well pad or connected to a central delivery point.

Well Name	API 14 Digit	ULSTR	Surface Location FTG	Anticipated Oil BBL/D	Anticipated Gas MCF/D	Anticipated Produced Water BBL/D
Ball State Com 301H	TBD	D-32-18S-35E	821 FNL 386 FWL	800 +/-	700 +/-	2500 +/-
Ball State Com 302H	TBD	C-32-18S-35E	822 FNL 2367 FWL	800 +/-	700 +/-	2500 +/-
Ball State Com 303H	TBD	A-32-18S-35E	824 FNL 690 FEL	800 +/-	700 +/-	2500 +/-
Ball State Com 304H	TBD	A-32-18S-35E	824 FNL 540 FEL	800 +/-	700 +/-	2500 +/-
Ball State Com 502H	TBD	C-32-18S-35E	822 FNL 2337 FWL	800 +/-	700 +/-	2500 +/-
Ball State Com 504H	TBD	A-32-18S-35E	824 FNL 570 FEL	800 +/-	700 +/-	2500 +/-
Ball State Com 601H	TBD	D-32-18S-35E	821 FNL 326 FWL	800 +/-	700 +/-	2500 +/-
Ball State Com 602H	TBD	C-32-18S-35E	822 FNL 2277 FWL	800 +/-	700 +/-	2500 +/-
Ball State Com 603H	TBD	C-32-18S-35E	822 FNL 2427 FWL	800 +/-	700 +/-	2500 +/-
Ball State Com 604H	TBD	A-32-18S-35E	824 FNL 630 FEL	800 +/-	700 +/-	2500 +/-
Ball State Com 701H	TBD	D-32-18S-35E	821 FNL 416 FWL	800 +/-	700 +/-	2500 +/-
Ball State Com 702H	TBD	C-32-18S-35E	822 FNL 2397 FWL	800 +/-	700 +/-	2500 +/-
Ball State Com 703H	TBD	A-32-18S-35E	824 FNL 660 FEL	800 +/-	700 +/-	2500 +/-
Ball State Com 704H	TBD	A-32-18S-35E	824 FNL 510 FEL	800 +/-	700 +/-	2500 +/-
Ball State Com 801H	TBD	D-32-18S-35E	821 FNL 356 FWL	800 +/-	700 +/-	2500 +/-
Ball State Com 802H	TBD	C-32-18S-35E	822 FNL 2307 FWL	800 +/-	700 +/-	2500 +/-
Ball State Com 803H	TBD	C-32-18S-35E	822 FNL 2457 FWL	800 +/-	700 +/-	2500 +/-
Ball State Com 804H	TBD	A-32-18S-35E	824 FNL 600 FEL	800 +/-	700 +/-	2500 +/-

V. Anticipated Schedule: Provide the following information for each new or recompleted well or set of wells proposed to be drilled or proposed to be recompleted from a single well pad or connected to a central delivery point.

Well Name	API 14 Digit	Spud Date (Batch Drilling)	TD Reached Date	Completion Commencement Date	Initial Flowback Date	First Production Date
Ball State Com 301H	TBD	5/15/2025	8/23/2025	9/17/2025	11/6/2025	11/8/2025
Ball State Com 302H	TBD	6/15/2025	9/3/2025	9/28/2025	11/7/2025	11/9/2025
Ball State Com 303H	TBD	7/1/2025	12/8/2025	1/2/2026	3/23/2026	3/25/2026
Ball State Com 304H	TBD	7/1/2025	12/8/2025	1/2/2026	3/23/2026	3/25/2026
Ball State Com 502H	TBD	5/15/2025	8/23/2025	9/17/2025	11/6/2025	11/8/2025
Ball State Com 504H	TBD	6/15/2025	9/3/2025	9/28/2025	11/7/2025	11/9/2025
Ball State Com 601H	TBD	5/15/2025	8/23/2025	9/17/2025	11/6/2025	11/8/2025
Ball State Com 602H	TBD	6/15/2025	9/3/2025	9/28/2025	11/7/2025	11/9/2025
Ball State Com 603H	TBD	7/1/2025	12/8/2025	1/2/2026	3/23/2026	3/25/2026
Ball State Com 604H	TBD	7/1/2025	12/8/2025	1/2/2026	3/23/2026	3/25/2026
Ball State Com 701H	TBD	7/1/2025	12/8/2025	1/2/2026	3/23/2026	3/25/2026
Ball State Com 702H	TBD	7/1/2025	12/8/2025	1/2/2026	3/23/2026	3/25/2026
Ball State Com 703H	TBD	7/1/2025	12/8/2025	1/2/2026	3/23/2026	3/25/2026
Ball State Com 704H	TBD	5/15/2025	8/23/2025	9/17/2025	11/6/2025	11/8/2025
Ball State Com 801H	TBD	6/15/2025	9/3/2025	9/28/2025	11/7/2025	11/9/2025
Ball State Com 802H	TBD	7/1/2025	12/8/2025	1/2/2026	3/23/2026	3/25/2026
Ball State Com 803H	TBD	7/1/2025	12/8/2025	1/2/2026	3/23/2026	3/25/2026
Ball State Com 804H	TBD	7/1/2025	12/8/2025	1/2/2026	3/23/2026	3/25/2026



Natural Gas Management Plan

Items VI-VIII

VI. Separation Equipment: Attach a complete description of how Operator will size separation equipment to optimize gas capture.

- Data from surrounding wells is used to generate type curves which provides the basis for expected gas rates during initial production, peak production and then the natural decline.
- Separation equipment will be sized to provide adequate separation for peak production.
- Facility design includes multiple stages of separation to minimize gas waste. Wells flow through a 3-phase separator to remove gas. Gas from the 3 Phase separators are then sent through a gas scrubber before being route to treatment and/or sales.
- Industry standard sizing calculations are used for gas-liquid separation and liquid-liquid separation.

VII. Operational Practices: Attach a complete description of the actions Operator will take to comply with the requirements of Subsection A through F 19.15.27.8 NMAC.

- Drilling, completion and production setup is designed to minimize the waste of natural gas and to flare instead of vent.
- *Drilling Operations:*
 - Natural gas encountered will be flared instead of vented unless there is an equipment malfunction and/or to avoid risking safety or the environment.
 - Flares will be properly sized and placed at least 100' from the nearest surface hole on the pad.
- *Completions/Recompletions Operations:*
 - Flowback operations will not commence until connected to a properly sized gas gathering system.
 - During initial flowback wells are routed to the separation equipment as soon as technically feasible to minimize gas waste.
 - During separation flowback wells are routed to the separation equipment to minimize gas waste.
 - Gas sales is maximized. Gas will be flared instead of vented during an emergency or malfunction to avoid posing a risk to operations or personnel safety.
 - Flares are properly sized with a continuous pilot.
- *Production Operations:*
 - Gas sales will be maximized. Gas will be flared instead of vented during an emergency or malfunction to avoid posing a risk to operations or personnel safety.
 - After a well is stabilized from liquid unloading, the well will be turned back into the collection system.
- *Performance Standards:*
 - The facility will be designed to handle peak production rates and pressures.
 - All tanks will have automatic gauging equipment.
 - Flares will be designed to ensure proper combustion and will have continuous pilots. Flares will be located 100' from nearest surface hole on the pad and storage tanks.
 - Weekly AVOs will be performed, and any leaking thief hatches will be cleaned and properly re-sealed.
- *Measurement and Calibration:*



- All volume that is flared and vented that is not measured will be estimated.
- When metering is not practical due to low pressure/rate, all vented or flared volumes will be estimated.
- Measurement will conform to industry standards. Measurement will not be bypassed except for purposes of inspection or calibration.

VIII. Best Management Practices: Attach a complete description of Operator's best management practices to minimize venting during active and planned maintenance.

- Venting will be minimized during active and planned maintenance.
- Systems and equipment requiring maintenance will be isolated and blown down to sales and then flare before any remaining gas is vented in an effort to minimize waste and venting.
- Downhole maintenance will use best management practices to minimize vent.

Ball NGMP Map
July 2024

- Capacities reflected are FME's understanding of 3rd party midstream system capacities

