

Well Name: APACHE	Well Location: T24N / R4W / SEC 4 / NESE / 36.33726 / -107.25391	County or Parish/State: RIO ARRIBA / NM
Well Number: 124	Type of Well: OIL WELL	Allottee or Tribe Name: JICARILLA APACHE
Lease Number: JIC127	Unit or CA Name:	Unit or CA Number:
US Well Number: 300392188700S1	Operator: HIGH RIVER RESOURCES OPERATING LLC	

Subsequent Report

Sundry ID: 2807103

Type of Submission: Subsequent Report	Type of Action: Plug and Abandonment
Date Sundry Submitted: 08/15/2024	Time Sundry Submitted: 12:29
Date Operation Actually Began: 08/05/2024	

Actual Procedure: This well has been plugged and abandoned per the attached report. The NMOCD also required a CBL that is attached for your review.

SR Attachments

Actual Procedure

- 039_21887__APACHE__124_CBL_20240815122825.pdf
- Apache__124_Plugging_Record_and_WBD_08.13.2024_20240815122716.pdf

Well Name: APACHE	Well Location: T24N / R4W / SEC 4 / NESE / 36.33726 / -107.25391	County or Parish/State: RIO ARRIBA / NM
Well Number: 124	Type of Well: OIL WELL	Allottee or Tribe Name: JICARILLA APACHE
Lease Number: JIC127	Unit or CA Name:	Unit or CA Number:
US Well Number: 300392188700S1	Operator: HIGH RIVER RESOURCES OPERATING LLC	

Operator

I certify that the foregoing is true and correct. Title 18 U.S.C. Section 1001 and Title 43 U.S.C. Section 1212, make it a crime for any person knowingly and willfully to make to any department or agency of the United States any false, fictitious or fraudulent statements or representations as to any matter within its jurisdiction. Electronic submission of Sundry Notices through this system satisfies regulations requiring a

Operator Electronic Signature: AMY ARCHULETA	Signed on: AUG 15, 2024 12:27 PM
Name: HIGH RIVER RESOURCES OPERATING LLC	
Title: Regulatory Supervisor	
Street Address: 2700 FARMINGTON AVE., BLDG K SUITE 1	
City: FARMINGTON	State: NM
Phone: (505) 325-0318	
Email address: AARCHULETA@HIGHRIVERLLC.COM	

Field

Representative Name:		
Street Address:		
City:	State:	Zip:
Phone:		
Email address:		

BLM Point of Contact

BLM POC Name: MATTHEW H KADE	BLM POC Title: Petroleum Engineer
BLM POC Phone: 5055647736	BLM POC Email Address: MKADE@BLM.GOV
Disposition: Accepted	Disposition Date: 08/19/2024
Signature: Matthew Kade	

**Plug Abandonment
Subsequent Report**

OPERATOR NAME:	High River Resources Operating, LLC
LEASE NO.:	JIC127
WELL NAME & NO.:	Apache #124
US WELL NUMBER:	30-039-21887
LOCATION:	T24N / R4W / SEC 4 / NESE /
COUNTY:	Rio Arriba, NM

08/05/24 MIRU plugging equipment. POH w/ rods & pump.

08/06/24 RIH w/ 4 1/2" scraper to 7069'. POH. Set 4 1/2" CICR @ 7069'. Circ'd hole. Pressure tested tbq, held 1000 psi. Pressure tested csg, wellhead leaking.

08/07/24 ND BOP & removed bad wellhead adapter. Pressure tested csg, held 0 psi. Spotted 12 sx class G cmt @ 7069' & displaced to 6915' per verbal approval w/ BLM. WOC. Ran CBL from 6909' to surface. TOC @ 1000'. Tagged plug @ 6937'. Pressure tested csg, held 0 psi. Spotted 12 sx class G cmt @ 6263' & displaced to 6109'. WOC.

8/8/2024 Tagged plug @ 6174' w/ Jeff Cross w/ WSM & Orrin Sandoval w/ BLM as witnesses. Pressure tested csg @ 5305', held 0 psi. Spotted 15 sx class G cmt w/ 2% CACL @ 5305' & displaced to 5113'. WOC & tagged @ 5170' w/ Jeff Cross & Orrin Sandoval as witnesses. Pressure tested csg @ 4600', held 800 PSI. Spotted 15 sx class G cmt w/ 2% CACL @ 4600' & displaced to 4408'. Spotted 12 sx class G cmt @ 3810' & displaced to 3656'. Spotted 64 sx class G cmt @ 2917-2093'.

08/09/24 Perf'd @ 760'. Established inj rate of 2 BPM @ 800 PSI. Set 4 1/2" CICR @ 710'. Loaded hole & est. injection rate of 2bpm @ 800 psi. Sqz'd 75 sx class G cmt @ 760' to 610'. 60 sx outside & 12 sx inside csg. WOC & tagged @ 604'. Tag approved by Jeff Cross & Oriin Sandoval. Perf'd @ 421'. Sqz'd 143 sx class G mt @ 421' & circulated to surface. 110 sx outside & 33 sx inside csg.

08/12/24 0psi on all strings. ND BOP. Cut off wellhead. TOC inside 4 1/2 @ 13'. TOC in 7 7/8" hole @ 8'. Topped off well with 20 sx class G cmt. Installed DHM. Cleaned location & moved off. A CBL was submitted to OCD via Action Item: 371692 (UF-WL) EP Well log submission.

Plug Summary:

PLUG #1 – 12 sks from 7069’-6915’ 1.15 yield w/ 2% CaCl₂. Used 12 sks inside of csg.

PLUG #2 – Spot 12 sks from 6263’-6109’ 14.8 ppg 1.15 yield w/ 12 sks inside csg.

PLUG #3 – Spot balance plug 15 sxs class g cement from 5305’-5113’, 15.8 ppg, 1.15 yield, with 2% CaCl₂. Displace w/ 19.7 bbls fresh water

PLUG #4- Spot 15 sx cement from 4600’ to 4408’, 15.8 ppg 1.15 yield, w/ 15 sxs inside csg

PLUG #5- Spot 12 sxs cement from 3810’ – 3656’ 15.8 ppg, 1.15 yield w/ 12 sxs inside csg

PLUG #6- Spot 64 sxs cement from 2917’ – 2093’ 15.8 ppg, 1.15 yield w/ 62 sxs inside csg. LD 68 jnts tbg

PLUG #7- Spot 72 sxs class G cement from 760’ – 610’ PPG, 15.8 yield, 1.15 yield, 60 sks outside csg and 12 sxs inside. Displace w/ 2.3 bbls fresh water.

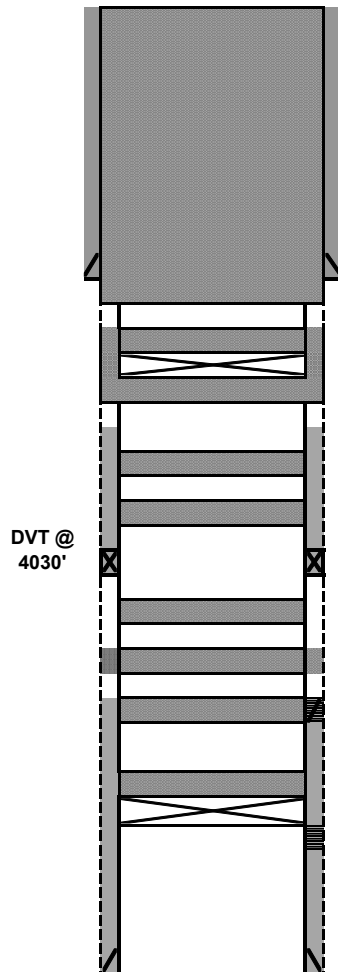
PLUG #8- Spot 1443 sxs Class G cement from 421’ to surface. 1.15 yield w/ 110 sxs outside csg and 33 sxs inside csg.

PLUG #9: Pump 20 sxs class G cement 15.5 ppg and 1.15 yield.

High River		PLUGGED	
Author:	Abby @ JMR	Well No.	#124
Well Name	Apache	API #:	30-039-21887
Field/Pool	Lindrith Gallup-Dakota, West	Location:	I-4-24N-04W
County	Rio Arriba		940 FSL & 660 FEL
State	NM	GL:	6753'
Spud Date	5/1/1980		

Description	O.D.	Grade	Weight	Depth	Hole	Cmt Sx	TOC
Surface Csg	8 5/8		24#	371	12 1/4	250	0
Prod Csg	4 1/2		10.5 & 11.6#	7,478	7 7/8	1,300	0

Formation	Top
Nacimiento	772
Ojo Alamo	2143
Kirtland	2336
Fruitland	2723
Pictured Cliffs	2850
Chacra	3698
Mesaverde	4490
Mancos	5283
Gallup	6223
Dakota	7119



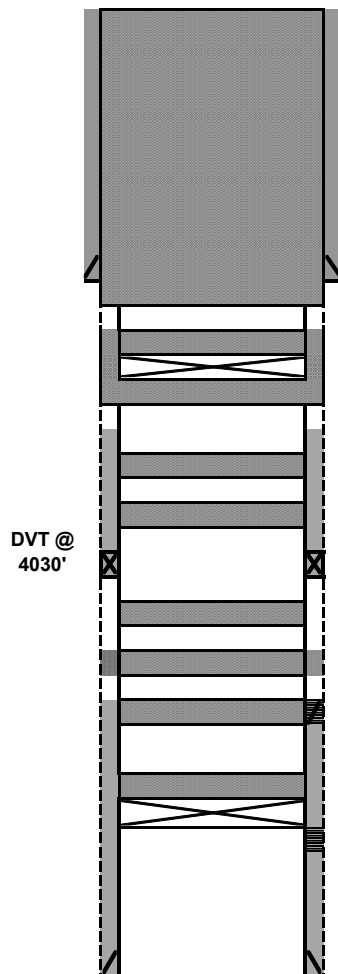
- 8 5/8 24# CSG @ 371
Hole Size: 12 1/4
8. Perf'd @ 421'. Sqz'd 143 sx class G mt @ 421' & circulated to surface. Topped off well with 20 sx.
7. Perf'd @ 760'. Established inj rate of 2 BPM @ 800 PSI. Set 4 1/2" CIRC @ 710'. Stung into CIRC. Sqz'd 75 sx class G cmt @ 760' to 610'. WOC & tagged @ 604'.
6. Spotted 64 sx class G cmt @ 2917-2093'.
5. Spotted 12 sx class G cmt @ 3810' & displaced to 3656'.
4. Spotted 15 sx class G cmt w/ 2% CACL @ 4600' & displaced to 4408'.
3. Spotted 15 sx class G cmt w/ 2% CACL @ 5305' & displaced to 5113'. WOC & tagged @ 5170'
- Perfs @ 6187-6376'. 04/1982- Sqz'd perfs w/ 200 sx
2. Spotted 12 sx class G cmt @ 6263' & displaced to 6109'. WOC & Tagged plug @ 6174'
1. Set 4 1/2" CIRC @ 7069'. Circ'd hole. Pressure tested csg, held 0 psi. Spotted 12 sx class G cmt @ 7069' & displaced to 6915'. WOC. Ran CBL from 6909' to surface. TOC @ 1000'. Tagged plug @ 6937'. Pressure tested csg, held 0 psi.
- Perfs @ 7119-7312'

4 1/2 10.5 & 11.6# CSG @ 7,478
Hole Size: 7 7/8
1st stage: 600 sx
2nd Stage: 700 sx

High River	PLUGGED		
Author:	Abby @ JMR	Well No.	#124
Well Name	Apache	API #:	30-039-21887
Field/Pool	Lindrith Gallup-Dakota, West	Location:	I-4-24N-04W
County	Rio Arriba		940 FSL & 660 FEL
State	NM	GL:	6753'
Spud Date	5/1/1980		

Description	O.D.	Grade	Weight	Depth	Hole	Cmt Sx	TOC
Surface Csg	8 5/8		24#	371	12 1/4	250	0
Prod Csg	4 1/2		10.5 & 11.6#	7,478	7 7/8	1,300	0

Formation	Top
Nacimiento	772
Ojo Alamo	2143
Kirtland	2336
Fruitland	2723
Pictured Cliffs	2850
Chacra	3698
Mesaverde	4490
Mancos	5283
Gallup	6223
Dakota	7119



8 5/8 24# CSG @ 371
Hole Size: 12 1/4

8. Perf'd @ 421'. Sqz'd 143 sx class G mt @ 421' & circulated to surface. Topped off well with 20 sx.

7. Perf'd @ 760'. Established inj rate of 2 BPM @ 800 PSI. Set 4 1/2" CIRC @ 710'. Stung into CIRC. Sqz'd 75 sx class G cmt @ 760' to 610'. WOC & tagged @ 604'.

6. Spotted 64 sx class G cmt @ 2917-2093'.

5. Spotted 12 sx class G cmt @ 3810' & displaced to 3656'.

4. Spotted 15 sx class G cmt w/ 2% CACL @ 4600' & displaced to 4408'.

3. Spotted 15 sx class G cmt w/ 2% CACL @ 5305' & displaced to 5113'. WOC & tagged @ 5170'

Perfs @ 6187-6376'. 04/1982- Sqz'd perfs w/ 200 sx

2. Spotted 12 sx class G cmt @ 6263' & displaced to 6109'. WOC & Tagged plug @ 6174'

1. Set 4 1/2" CIRC @ 7069'. Circ'd hole. Pressure tested csg, held 0 psi. Spotted 12 sx class G cmt @ 7069' & displaced to 6915'. WOC. Ran CBL from 6909' to surface. TOC @ 1000'. Tagged plug @ 6937'. Pressure tested csg, held 0 psi.

Perfs @ 7119-7312'

4 1/2 10.5 & 11.6# CSG @ 7,478
Hole Size: 7 7/8

1st stage: 600 sx

2nd Stage: 700 sx

District I
1625 N. French Dr., Hobbs, NM 88240
Phone:(575) 393-6161 Fax:(575) 393-0720
District II
811 S. First St., Artesia, NM 88210
Phone:(575) 748-1283 Fax:(575) 748-9720
District III
1000 Rio Brazos Rd., Aztec, NM 87410
Phone:(505) 334-6178 Fax:(505) 334-6170
District IV
1220 S. St Francis Dr., Santa Fe, NM 87505
Phone:(505) 476-3470 Fax:(505) 476-3462

State of New Mexico
Energy, Minerals and Natural Resources
Oil Conservation Division
1220 S. St Francis Dr.
Santa Fe, NM 87505

CONDITIONS

Action 375440

CONDITIONS

Operator: High River Resources Operating, LLC 2700 Farmington Ave FARMINGTON, NM 87401	OGRID: 328985
	Action Number: 375440
	Action Type: [C-103] Sub. Plugging (C-103P)

CONDITIONS

Created By	Condition	Condition Date
mkuehling	Well plugged 8/12/2024 - accepted for record only	8/21/2024