

Submit a Copy To Appropriate District  
Office  
District I – (575) 393-6161  
1625 N. French Dr., Hobbs, NM 88240  
District II – (575) 748-1283  
811 S. First St., Artesia, NM 88210  
District III – (505) 334-6178  
1000 Rio Brazos Rd., Aztec, NM 87410  
District IV – (505) 476-3460  
1220 S. St. Francis Dr., Santa Fe, NM  
87505

State of New Mexico  
Energy, Minerals and Natural Resources

Form C-103  
Revised July 18, 2013

OIL CONSERVATION DIVISION  
1220 South St. Francis Dr.  
Santa Fe, NM 87505

WELL API NO. 30-015-45981
5. Indicate Type of Lease STATE <input checked="" type="checkbox"/> FEE <input type="checkbox"/>
6. State Oil & Gas Lease No.
7. Lease Name or Unit Agreement Name Poker Lake Unit 32 BS Petirrojo MON State
8. Well Number 001
9. OGRID Number 373075
10. Pool name or Wildcat Stratagraphic
11. Elevation (Show whether DR, RKB, RT, GR, etc.) GL 3314'

SUNDRY NOTICES AND REPORTS ON WELLS (DO NOT USE THIS FORM FOR PROPOSALS TO DRILL OR TO DEEPEN OR PLUG BACK TO A DIFFERENT RESERVOIR. USE "APPLICATION FOR PERMIT" (FORM C-101) FOR SUCH PROPOSALS.)	
1. Type of Well: Oil Well <input type="checkbox"/> Gas Well <input type="checkbox"/> Other	
2. Name of Operator XTO Permian Operating LLC.	
3. Address of Operator 6401 Holliday Hill Rd. Bldg 5, Midland, TX 79707	
4. Well Location Unit Letter <u>L</u> : <u>1920</u> feet from the <u>South</u> line and <u>1320</u> feet from the <u>West</u> line Section <u>32</u> Township <u>25S</u> Range <u>31E</u> NMPM County <u>Eddy</u>	
11. Elevation (Show whether DR, RKB, RT, GR, etc.) GL 3314'	

12. Check Appropriate Box to Indicate Nature of Notice, Report or Other Data

NOTICE OF INTENTION TO:		SUBSEQUENT REPORT OF:	
PERFORM REMEDIAL WORK <input type="checkbox"/>	PLUG AND ABANDON <input type="checkbox"/>	REMEDIAL WORK <input type="checkbox"/>	ALTERING CASING <input type="checkbox"/>
TEMPORARILY ABANDON <input type="checkbox"/>	CHANGE PLANS <input type="checkbox"/>	COMMENCE DRILLING OPNS. <input type="checkbox"/>	P AND A <input type="checkbox"/>
PULL OR ALTER CASING <input type="checkbox"/>	MULTIPLE COMPL <input type="checkbox"/>	CASING/CEMENT JOB <input type="checkbox"/>	
DOWNHOLE COMMINGLE <input type="checkbox"/>			
CLOSED-LOOP SYSTEM <input type="checkbox"/>			
OTHER: <input type="checkbox"/>		OTHER: Temporary Abandonment <input checked="" type="checkbox"/>	

13. Describe proposed or completed operations. (Clearly state all pertinent details, and give pertinent dates, including estimated date of starting any proposed work). SEE RULE 19.15.7.14 NMAC. For Multiple Completions: Attach wellbore diagram of proposed completion or recompletion.

XTO Permian Operating LLC., has Temporarily Abandoned the above mentioned well per the attached TA Summary Report WBD and MIT.

**FINAL TA STATUS- EXTENSION**

Approval of TA EXPIRES: 8/26/29  
Well needs to be **PLUGGED OR RETURNED**  
to **PRODUCTION**  
BY THE DATE STATED ABOVE: KF

Spud Date:

09/20/2019

Rig Release Date:

11/22/2019

I hereby certify that the information above is true and complete to the best of my knowledge and belief.

SIGNATURE Sherry Morrow TITLE Regulatory Analyst DATE 9/9/2024

Type or print name Sherry Morrow E-mail address: sherry.morrow@exxonmobil.com PHONE: (432) 967-7046

**For State Use Only**

APPROVED BY: Kerry Fortner TITLE Compliance Officer A DATE 9/10/24

Conditions of Approval (if any):

Poker Lake Unit 32 BS Petirrojo MON 001  
API Number 3001545981  
Temporary Abandonment Summary Report

8/12/24: Move in equipment. RU pump & pit. Shut down. WO NMOCD.

8/13/24: PT lines to 1500 psi. Good test. Bled off tbg psi to 0. Attempted to flush tbg w/no success. Pumped 2 bbls OF TFW. Tbg pressured up to 1k psi. Stopped pump. Monitored pressure. Pressure held solid. MIRU WLU. PT lube to 500 psi. Good test. RIH w/1.75" GR to x-profile nipple at 11,345'. Tagged solid. POH. RDMO WLU. SDFD.

8/14/24: ND production tree. NU 7 1/16 15k x 5k XO spool, 7 1/16" 5k dual BOPE w/ 2-3/8" pipe rams on top and blinds on bottom, 7 1/16" 5k annular bag. PT dual bope components to 250/low/5min & 4500/high/5min. PT annular to 250/low/5min & 2000/high/5min. Good test. PT lube to 500 psi. Good test. RIH w/1.687" GR to x-profile nipple at 11,345'. Tagged solid. Clean PU off bottom. RIH w/approved design. Tagged nipple lightly. PU off bottom. Pulled sticky. POH. RDMO WLU. MIRU precision pressure data BLU. Ensured all safety devices were in place and operable. PT lube to 500 psi. good test. RIH w/EQ prong to top of x-nipple. Applied 400 psi on tbg. Located nipple. Jarred down once. PSI dropped to 0. POH. Found brass on spear. RIH w/2" GS pulling tool. Engaged and unset plug with success. POH. Recovered plug at surface. Secured well. SDFD.

8/15/24: RIH w/equalizing prong found plug #7 @ 11,400' BLM. Jarred down twice. PU off bottom. Pulled sticky. POH. Found brass on prong. MU 2" "GR" (shear up) pulling tool. Engaged plug. Jarred down a few times to unset locking keys. PU off bottom. Observed slight overpull. POH. Observed slight overpull at X-nipple above @ 11,345'. POH. Recovered plug at surface. Repeated process for plugs #6 & #5. Observed same indications of brass on prong & slight overpull at X-nipples above each plug pulled. Attempted to RIH to recover plug #4. Secured well. SDFD.

8/16/24: RIH w/equalizing prong found plug #4 @ 11,794'. Jarred down twice. PU off bottom. Pulled sticky. POH. Found brass on prong. MU 2" "GR" (shear up) pulling tool. Engaged plug. Jarred down a few times to unset locking keys. PU off bottom. Observed slight overpull. POH. Observed slight overpull at X-nipple above @ 11,345'. POH. Recovered plug at surface successfully. Observed same indications of brass on prong & slight overpull at X-nipples above plug pulled. 3 remaining plugs in well were PX plugs. Changed over to JDC pulling tool. RIH. Engaged PX plug prong. POH. Recovered prong at surface. CO to GS pulling tool. RIH. Engaged & pulled lock. Fought every profile above. Recovered PX plug #3 at surface. CO tools to JDC. Repeated process for plugs #2 & #1. All plugs recovered successfully. (5-1.875" X-plugs & 3-1.875" PX plugs w/prong in place). Secured well. RDMO. SDFN.

8/17/24: MIRU WLU. RIH w/1.75" GR to bottom of PKR @ 12,468'. POH. MU cutter. RIH w/1.687" Jet cutter. Logged from below PKR #1 to 15' above same PKR cut tbg mid jt @ 12,453'. Good fire. POH. PU on string 15k over. Set slips. MU next 1.687" cutter. PU lube. RIH w/1.687 jet cutter to make 2nd cut. Cut tbg 15' above PKR #7. (Cut made 11,337') POH. RD WLU. PU on string. String wt. 67k pulling free. RDMO WLU. MIRU laydown machine and spooler. POH LD 2 3/8" production tbg & TEC line. TOH w/100 jts of tbg. Secured well. SDFD.

8/18/24: Pulled out of hole LD a total of 344 jts of 2 3/8" tbg & 22' piece of cut pipe. 10' piece of 2 3/8" body looking up. Cut pieces flared out to +- 2 3/4". TEC line was cut smooth at cut depth. TEC line was secured with one body clamp per joint roughly 4' from bottom upset. Secured well. Moved out 2 3/8" tbg. Racked & tally fishing tools & 2 7/8" workstring. Removed box protectors. Changed out 2 3/8" tbg handling tools with 2 7/8" PH6 handling tools. SDFD.

8/19/24: Installed & PT 2 7/8" pipe rams to 250/low & 4500/high. Good test. MU Approved fishing BHA, OS w/2 3/8" grapple, LBS, Oil jar, drill collars & intensifier RIH w/BHA & 254 jts of 2 7/8" PH6 workstring. Laydown machine skate chain broke. Secured well. SD rig Ops. SDFN.

8/20/24: RIH with a total 356 joints of 2 7/8" PH6 workstring. Tagged FT at 11,335'. Spaced out. Installed pups. PU-78k SO-73k. Applied 2k weight on shoe. Initiated dress off. Dressed off FT +-5 min. Shoe fell over fish. Walked OS down to grapple. Engaged fish. Conducted push and pull test. (15k over and under). Good test. Worked pipe to a max pull of 140k. Pipe started to move dragging heavy 95k-97k. LD pup jts. TOH w/2 7/8" 7.90# PH6 workstring. Hung up with 99 stands out. Depth of grapple was 5161'. No up or down. Jars travelling at 45k. Jarred 3 x s. Last time at 90k and it jumped free. Dragging and jumping between 45-90k. Continued TOH dragging heavy. TOH with a total of 336 jts of workstring. EOT @ 1800'. Secured well. SDFD.

8/21/24: Continued TOH w/ 2-7/8" 7.90# PH6 workstring. Recovered fish at surface. LD 7 PKR & Sagerider DHPG assy's along with 7 sliding sleeves. All equipment recovered at surface. 0 missing clamps, pins or bands. MU new BHA as per previous approved design. (OS w/2 3/8" grapple, LBS, Oil jar, 6- 3.5" drill collars & intensifier). RIH with a total 356 joints of 2 7/8" PH6 workstring. EOT @ 11,335'. Secured well. SDFD.

8/22/24: Continued TIH w/ 2-7/8" 7.90# PH6 workstring. Tagged fish at 12,453'. Spaced out. Installed pup joints. Dressed off and engaged fish with ease. Conducted push and pull test. (15k over & under) Good test. PU & unset PKR with 130k tension. Fired jars once prior to release. Attempted to run past PKR set depth to confirm release w/no success. Checked well file and found old CIBP set at 12,500' may be a bit higher than anticipated. POH w/1 stand. Observed slight bobble indicating PKR on. TOH. TOH w/2 7/8" 7.90# PH6 workstring. TOH w/392 jts of workstring. Broke down BHA. Recovered fish at surface. LD 1 PKR, pup joint, x-nipple & open-ended pup. All equipment recovered at surface. Secured well. Loaded fishing tools on trailer. Moved pipe racks and extra pipe. Prepped for WL in the AM. SDFD.

8/23/24: MIRU WLU. Ensured all safety devices were in place and operable. RIH w/CCL to MJ @ 10,001'. Adjusted +19'. Continued RIH to top perf. Correlated to top perf at 11,413'. Adjusted +2 on wireline depth. POH. MU 5.5" CIBP. RIH w/plug to set depth. 7.75' off-set from plug to CCL. Placed CCL at 11,355'. Set plug at 11,363'. PU off bottom. RIH tagged top of plug. Plug in place. POH. RDMO WLU. RIH w/364 joints of 2 7/8" 7.90# PH6 workstring. Tagged plug at 11,363'. Spaced out. Installed pups. PU 6" off bottom. Loaded hole w/100 bbls of PKR fluid. PT to 500 psi. Good test. Circulated a total of 230 bbls of PKR @ 3 bpm w/1000 psi pump pressure. Good clean PKR fluid in returns. Secured well. SDFD.

8/24/24: MIRU cement pump truck and bulk tanks. Ensured all safety equipment was in place and operable. Mix & spotted 25 sks Class H CMT over CIBP. (FW mix 2.5 bbls, Slurry vol 4.7 bbls, 16.4 ppg, FOF 222', CTOC 11,140') Displaced w/58 bbls of 10# brine. Cleaned up w/10 bbls FW. TOH w/30 jts of workstring. EOT @ 10,401'. Circulated 1.5x bottoms up. Good clear returns. WO cement to set. TIH w/24 jts of tbg TTOC @ 11,100'. POH LD 30 jts of 2 7/8" 7.90# PH6 workstring. EOT @ 10,152'. Secured well. SDFN.

8/25/24: POH LD a total of 355 jts of 2 7/8" 7.90# PH6 workstring. Installed 7" x 2 3/8" hanger. Ran in hanger lockdown pins. RD rig floor and LD machine. ND BOP stack. TOH w/30 jts of workstring. EOT @ 10,401'. NU 2 1/16" 10k production tree. PT tree to 250/low/10min & 8500/high/10min. Good test. SDFD.

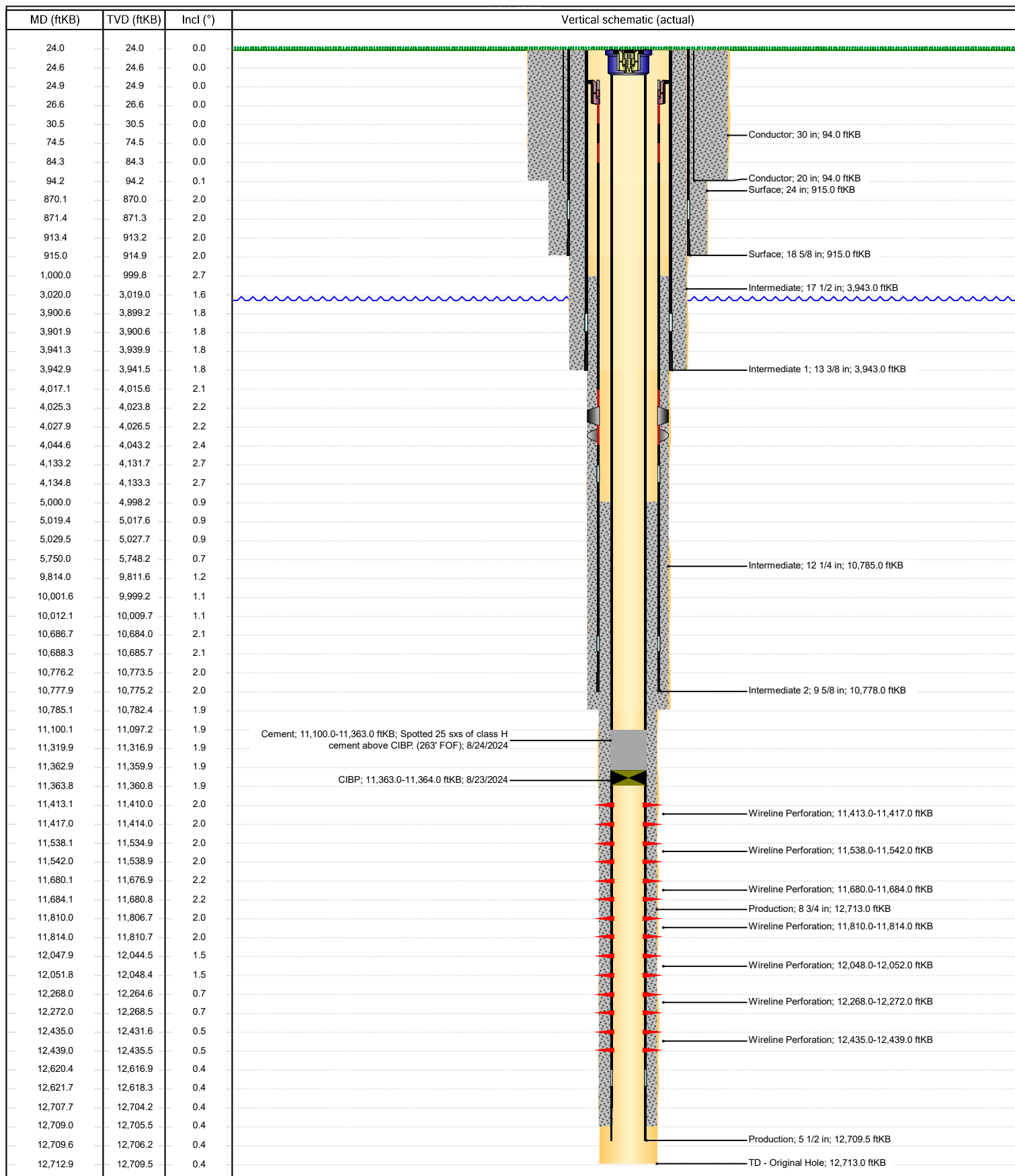
8/26/24: MIRU Sonic test unit. Csg had 700 psi on it from previous day to work out air. Bled down csg to test unit. Perform MIT test w/ OCD Rep on location. First test failed due to slight drop in last 5 minutes. OCD requested us to run another chart. 2<sup>nd</sup> test was passing chart. Start 595 psi End 590 psi, 32-minute chart. Secure location. RDMO.



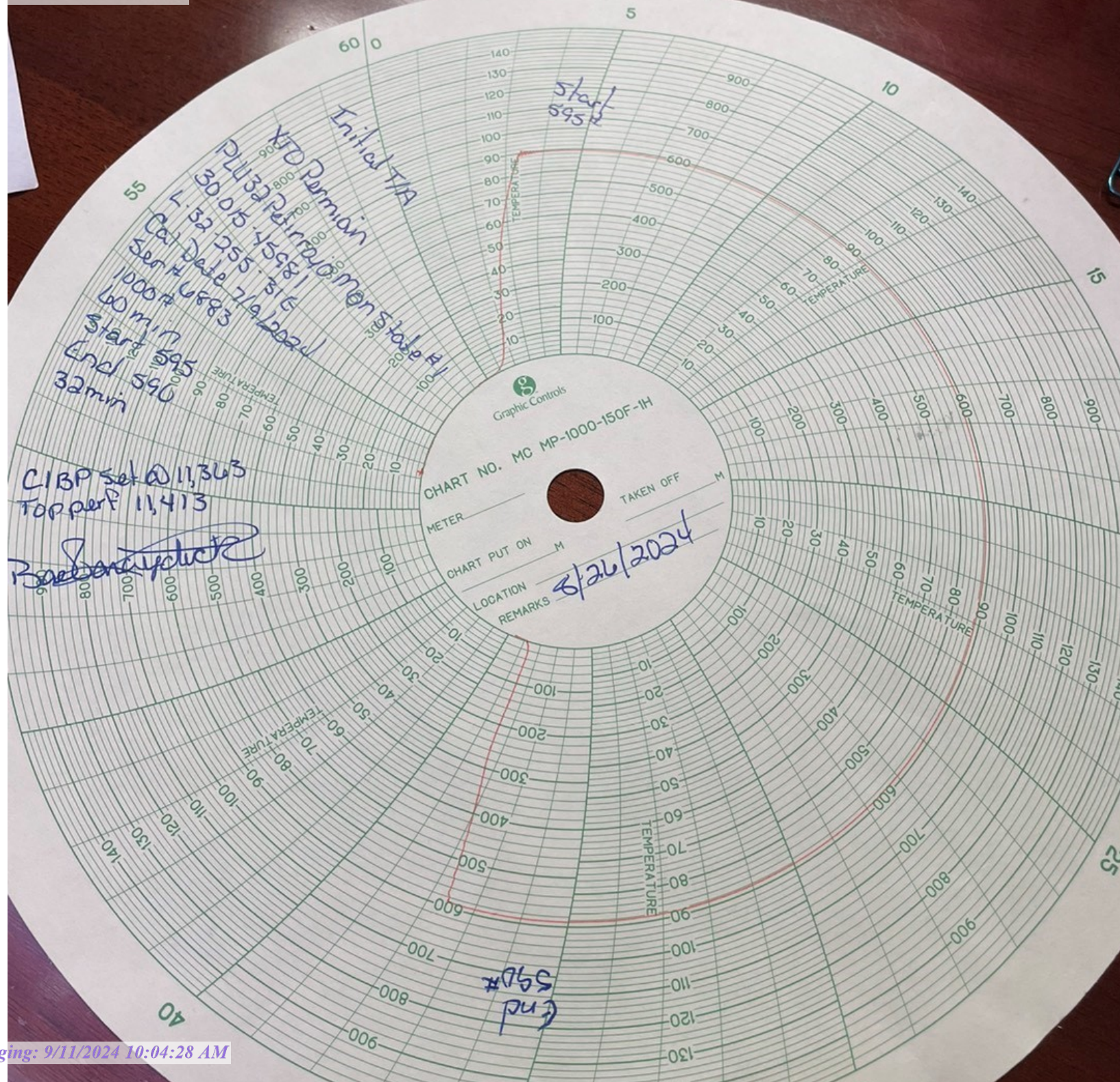
## Schematic - Vertical with Perfs

Well Name: Poker Lake Unit 32 BS Petirrojo MON 001

API/UWI 3001545981	SAP Cost Center ID 2187521001	Permit Number NMOCD	State/Province New Mexico	County Eddy
Surface Location T25S-R31E-S32	Spud Date 9/20/2019 21:00	Original KB Elevation (ft) 3,338.00	Ground Elevation (ft) 3,314.00	KB-Ground Distance (ft) 24.00







**District I**  
1625 N. French Dr., Hobbs, NM 88240  
Phone:(575) 393-6161 Fax:(575) 393-0720  
**District II**  
811 S. First St., Artesia, NM 88210  
Phone:(575) 748-1283 Fax:(575) 748-9720  
**District III**  
1000 Rio Brazos Rd., Aztec, NM 87410  
Phone:(505) 334-6178 Fax:(505) 334-6170  
**District IV**  
1220 S. St Francis Dr., Santa Fe, NM 87505  
Phone:(505) 476-3470 Fax:(505) 476-3462

**State of New Mexico**  
**Energy, Minerals and Natural Resources**  
**Oil Conservation Division**  
**1220 S. St Francis Dr.**  
**Santa Fe, NM 87505**

CONDITIONS

Action 381506

CONDITIONS

Operator: XTO PERMIAN OPERATING LLC. 6401 HOLIDAY HILL ROAD MIDLAND, TX 79707	OGRID: 373075
	Action Number: 381506
	Action Type: [C-103] Sub. Temporary Abandonment (C-103U)

CONDITIONS

Created By	Condition	Condition Date
kfortner	TA expires 8/26/29	9/10/2024