

Form 3160-3
(June 2015)FORM APPROVED
OMB No. 1004-0137
Expires: January 31, 2018UNITED STATES
DEPARTMENT OF THE INTERIOR
BUREAU OF LAND MANAGEMENT
APPLICATION FOR PERMIT TO DRILL OR REENTER

| | | |
|--|---------------------------------------|---|
| 1a. Type of work: <input type="checkbox"/> DRILL <input type="checkbox"/> REENTER | | 5. Lease Serial No. |
| 1b. Type of Well: <input type="checkbox"/> Oil Well <input type="checkbox"/> Gas Well <input type="checkbox"/> Other | | 6. If Indian, Allottee or Tribe Name |
| 1c. Type of Completion: <input type="checkbox"/> Hydraulic Fracturing <input type="checkbox"/> Single Zone <input type="checkbox"/> Multiple Zone | | 7. If Unit or CA Agreement, Name and No. |
| 2. Name of Operator | | 8. Lease Name and Well No. |
| 3a. Address | | 9. API Well No. 30-025-53567 |
| 3b. Phone No. (include area code) | | 10. Field and Pool, or Exploratory |
| 4. Location of Well (Report location clearly and in accordance with any State requirements. *) At surface At proposed prod. zone | | 11. Sec., T. R. M. or Blk. and Survey or Area |
| 14. Distance in miles and direction from nearest town or post office* | | 12. County or Parish |
| | | 13. State |
| 15. Distance from proposed* location to nearest property or lease line, ft. (Also to nearest drig. unit line, if any) | 16. No of acres in lease | 17. Spacing Unit dedicated to this well |
| 18. Distance from proposed location* to nearest well, drilling, completed, applied for, on this lease, ft. | 19. Proposed Depth | 20. BLM/BIA Bond No. in file |
| 21. Elevations (Show whether DF, KDB, RT, GL, etc.) | 22. Approximate date work will start* | 23. Estimated duration |
| 24. Attachments | | |
| The following, completed in accordance with the requirements of Onshore Oil and Gas Order No. 1, and the Hydraulic Fracturing rule per 43 CFR 3162.3-3 (as applicable) | | |
| 1. Well plat certified by a registered surveyor. 2. A Drilling Plan. 3. A Surface Use Plan (if the location is on National Forest System Lands, the SUPO must be filed with the appropriate Forest Service Office). | | 4. Bond to cover the operations unless covered by an existing bond on file (see Item 20 above). 5. Operator certification. 6. Such other site specific information and/or plans as may be requested by the BLM. |
| 25. Signature | Name (Printed/Typed) | Date |
| Title | | |
| Approved by (Signature) | Name (Printed/Typed) | Date |
| Title | | Office |
| Application approval does not warrant or certify that the applicant holds legal or equitable title to those rights in the subject lease which would entitle the applicant to conduct operations thereon. Conditions of approval, if any, are attached. | | |
| Title 18 U.S.C. Section 1001 and Title 43 U.S.C. Section 1212, make it a crime for any person knowingly and willfully to make to any department or agency of the United States any false, fictitious or fraudulent statements or representations as to any matter within its jurisdiction. | | |

(Continued on page 2)

*(Instructions on page 2)



| | | | |
|---|--|-------------------------------------|---|
| C-102 Submit Electronically Via OCD Permitting | State of New Mexico Energy, Minerals & Natural Resources Department OIL CONSERVATION DIVISION | Revised July 9, 2024 | |
| | | Submittal Type: | <input checked="" type="checkbox"/> Initial Submittal |
| | | | <input type="checkbox"/> Amended Report |
| | | <input type="checkbox"/> As Drilled | |

WELL LOCATION INFORMATION

| | | |
|--|--|---|
| API Number 30-025-53567 | Pool Code 98065 | Pool Name WILDCAT; UPPER WOLFCAMP |
| Property Code | Property Name RED HILLS WEST 21 FED COM | 816H |
| OGRID No. 14744 | Operator Name MEWBOURNE OIL COMPANY | Ground Level Elevation 3157 |
| Surface Owner: <input type="checkbox"/> State <input type="checkbox"/> Fee <input type="checkbox"/> Tribal <input checked="" type="checkbox"/> Federal | | Mineral Owner: <input type="checkbox"/> State <input type="checkbox"/> Fee <input type="checkbox"/> Tribal <input type="checkbox"/> Federal |

Surface Location

| | | | | | | | | | |
|---------|---------------|-----------------|--------------|-----|-----------------------|------------------------|------------------------|---------------------------|---------------|
| UL B | Section 21 | Township 26S | Range 32E | Lot | Ft. from N/S 250 N | Ft. from E/W 1660 E | Latitude 32.0348786 | Longitude -103.6767484 | County LEA |
|---------|---------------|-----------------|--------------|-----|-----------------------|------------------------|------------------------|---------------------------|---------------|

Bottom Hole Location

| | | | | | | | | | |
|---------|---------------|-----------------|--------------|-----|-----------------------|------------------------|------------------------|---------------------------|---------------|
| UL O | Section 21 | Township 26S | Range 32E | Lot | Ft. from N/S 100 S | Ft. from E/W 1360 E | Latitude 32.0211371 | Longitude -103.6757505 | County LEA |
|---------|---------------|-----------------|--------------|-----|-----------------------|------------------------|------------------------|---------------------------|---------------|

| | | | | |
|------------------------|-------------------------|-------------------|--|--------------------|
| Dedicated Acres 320 | Infill or Defining Well | Defining Well API | Overlapping Spacing Unit (Y/N) | Consolidation Code |
| Order Numbers. | | | Well setbacks are under Common Ownership: <input type="checkbox"/> Yes <input type="checkbox"/> No | |

Kick Off Point (KOP)

| | | | | | | | | | |
|---------|---------------|-----------------|--------------|-----|----------------------|------------------------|------------------------|---------------------------|---------------|
| UL B | Section 21 | Township 26S | Range 32E | Lot | Ft. from N/S 10 N | Ft. from E/W 1360 E | Latitude 32.0355389 | Longitude -103.6757829 | County LEA |
|---------|---------------|-----------------|--------------|-----|----------------------|------------------------|------------------------|---------------------------|---------------|

First Take Point (FTP)

| | | | | | | | | | |
|---------|---------------|-----------------|--------------|-----|-----------------------|------------------------|------------------------|--------------------------|---------------|
| UL B | Section 21 | Township 26S | Range 32E | Lot | Ft. from N/S 100 N | Ft. from E/W 1360 E | Latitude 32.0352915 | Longitude -10.6757823 | County LEA |
|---------|---------------|-----------------|--------------|-----|-----------------------|------------------------|------------------------|--------------------------|---------------|

Last Take Point (LTP)

| | | | | | | | | | |
|---------|---------------|-----------------|--------------|-----|-----------------------|------------------------|------------------------|---------------------------|---------------|
| UL O | Section 21 | Township 26S | Range 32E | Lot | Ft. from N/S 100 S | Ft. from E/W 1360 E | Latitude 32.0211371 | Longitude -103.6757505 | County LEA |
|---------|---------------|-----------------|--------------|-----|-----------------------|------------------------|------------------------|---------------------------|---------------|

| | | |
|---|--|---------------------------------|
| Unitized Area or Area of Uniform Interest | Spacing Unit Type <input checked="" type="checkbox"/> Horizontal <input type="checkbox"/> Vertical | Ground Floor Elevation: 3157 |
|---|--|---------------------------------|

| | | | |
|---|--|--|--|
| OPERATOR CERTIFICATIONS <i>I hereby certify that the information contained herein is true and complete to the best of my knowledge and belief, and, if the well is a vertical or directional well, that this organization either owns a working interest or unleased mineral interest in the land including the proposed bottom hole location or has a right to drill this well at this location pursuant to a contract with an owner of a working interest or unleased mineral interest, or to a voluntary pooling agreement or a compulsory pooling order heretofore entered by the division.</i> <i>If this well is a horizontal well, I further certify that this organization has received the consent of at least one lessee or owner of a working interest or unleased mineral interest in each tract (in the target pool or formation) in which any part of the well's completed interval will be located or obtained a compulsory pooling order from the division.</i> <i>Andrew W Taylor</i> 8/27/2024 Signature Date Andy Taylor Printed Name ataylor@mewbourne.com Email Address | | SURVEYOR CERTIFICATIONS <i>I hereby certify that the well location shown on this plat was plotted from field notes of actual surveys made by me or under my supervision, and that the same is true and correct to the best of my belief.</i> Signature and Seal of Professional Surveyor Certificate Number Date of Survey | |
|---|--|--|--|

Note: No allowable will be assigned to this completion until all interests have been consolidated or a non-standard unit has been approved by the division.

District I
1625 N. French Dr., Hobbs, NM 88240
Phone: (575) 393-6161 Fax: (575) 393-0720
District II
811 S. First St., Artesia, NM 88210
Phone: (575) 748-1283 Fax: (575) 748-9720
District III
1000 Rio Brazos Road, Aztec, NM 87410
Phone: (505) 334-6178 Fax: (505) 334-6170
District IV
1220 S. St. Francis Dr., Santa Fe, NM 87505
Phone: (505) 476-3460 Fax: (505) 476-3462

State of New Mexico
Energy, Minerals & Natural Resources Department
OIL CONSERVATION DIVISION
1220 South St. Francis Dr.
Santa Fe, NM 87505

Form C-102
Revised August 1, 2011
Submit one copy to appropriate
District Office

☐ AMENDED REPORT

WELL LOCATION AND ACREAGE DEDICATION PLAT

| | | | |
|--|--|--|--|
| ¹ API Number 30-025-53567 | | ² Pool Code 98065 | ³ Pool Name WILDCAT; UPPER WOLFCAMP |
| ⁴ Property Code 38643 | ⁵ Property Name RED HILLS WEST 21 FED COM | | ⁶ Well Number 816H |
| ⁷ OGRID NO. 14744 | ⁸ Operator Name MEWBOURNE OIL COMPANY | | ⁹ Elevation 3157' |

¹⁰ Surface Location

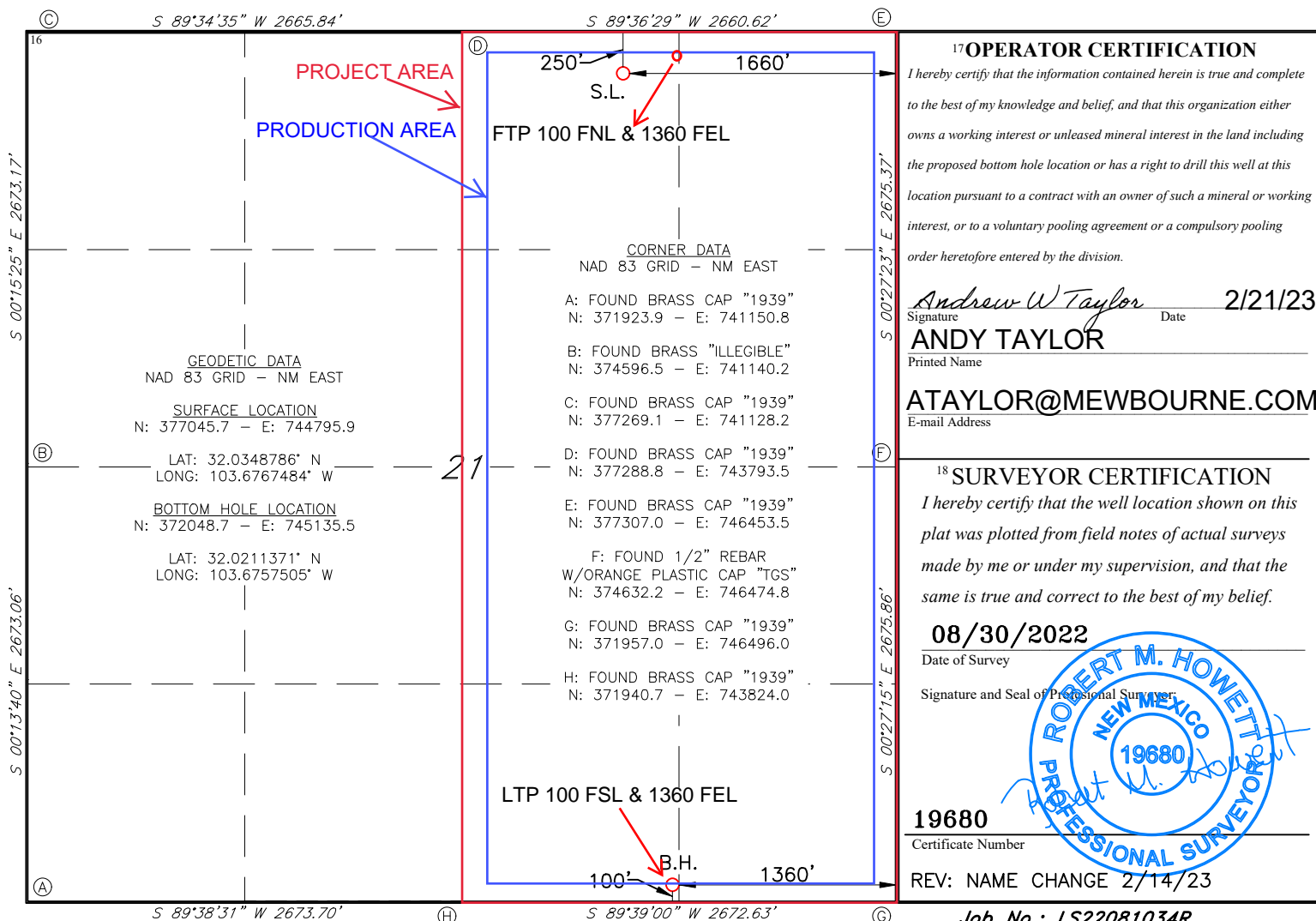
| UL or lot no. | Section | Township | Range | Lot Idn | Feet from the | North/South line | Feet From the | East/West line | County |
|---------------|-----------|------------|------------|---------|---------------|------------------|---------------|----------------|------------|
| B | 21 | 26S | 32E | | 250 | NORTH | 1660 | EAST | LEA |

¹¹ Bottom Hole Location If Different From Surface

| UL or lot no. | Section | Township | Range | Lot Idn | Feet from the | North/South line | Feet from the | East/West line | County |
|---------------|-----------|------------|------------|---------|---------------|------------------|---------------|----------------|------------|
| 0 | 21 | 26S | 32E | | 100 | SOUTH | 1360 | EAST | LEA |

| | | | |
|---|-------------------------------|----------------------------------|-------------------------|
| ¹² Dedicated Acres 320 | ¹³ Joint or Infill | ¹⁴ Consolidation Code | ¹⁵ Order No. |
|---|-------------------------------|----------------------------------|-------------------------|

No allowable will be assigned to this completion until all interest have been consolidated or a non-standard unit has been approved by the division.



Page 5

State of New Mexico
Energy, Minerals and Natural Resources Department
Oil Conservation Division
1220 South St. Francis Dr.
Santa Fe, NM 87505

Submit Electronically
Via E-permitting

NATURAL GAS MANAGEMENT PLAN

This Natural Gas Management Plan must be submitted with each Application for Permit to Drill (APD) for a new or recompleted well.

Section 1 – Plan Description Effective May 25, 2021

I. Operator: Mewbourne Oil Co. **OGRID:** 14744 **Date:** 5/2/22

II. Type: ☒ Original ☐ Amendment due to ☐ 19.15.27.9.D(6)(a) NMAC ☐ 19.15.27.9.D(6)(b) NMAC ☐ Other.

If Other, please describe: _____

III. Well(s): Provide the following information for each new or recompleted well or set of wells proposed to be drilled or proposed to be recompleted from a single well pad or connected to a central delivery point.

| Well Name | API | ULSTR | Footages | Anticipated Oil BBL/D | Anticipated Gas MCF/D | Anticipated Produced Water BBL/D |
|--------------------------------|-----|--------------|----------------------|-----------------------|-----------------------|----------------------------------|
| Red Hills West 21 Fed Com 816H | | B 21 26S 32E | 250' FNL x 1660' FBL | 1500 | 2500 | 4000 |
| | | | | | | |

IV. Central Delivery Point Name: Red Hills West 21 Fed Com 816H [See 19.15.27.9(D)(1) NMAC]

V. Anticipated Schedule: Provide the following information for each new or recompleted well or set of wells proposed to be drilled or proposed to be recompleted from a single well pad or connected to a central delivery point.

| Well Name | API | Spud Date | TD Reached Date | Completion Commencement Date | Initial Flow Back Date | First Production Date |
|--------------------------------|-----|-----------|-----------------|------------------------------|------------------------|-----------------------|
| Red Hills West 21 Fed Com 816H | | 7/2/22 | 8/2/22 | 9/2/22 | 9/17/22 | 9/17/22 |
| | | | | | | |

VI. Separation Equipment: ☒ Attach a complete description of how Operator will size separation equipment to optimize gas capture.

VII. Operational Practices: ☒ Attach a complete description of the actions Operator will take to comply with the requirements of Subsection A through F of 19.15.27.8 NMAC.

VIII. Best Management Practices: ☒ Attach a complete description of Operator's best management practices to minimize venting during active and planned maintenance.

Page 6

Section 2 – Enhanced Plan**EFFECTIVE APRIL 1, 2022**

Beginning April 1, 2022, an operator that is not in compliance with its statewide natural gas capture requirement for the applicable reporting area must complete this section.

☒ Operator certifies that it is not required to complete this section because Operator is in compliance with its statewide natural gas capture requirement for the applicable reporting area.

IX. Anticipated Natural Gas Production:

| Well | API | Anticipated Average Natural Gas Rate MCF/D | Anticipated Volume of Natural Gas for the First Year MCF |
|------|-----|--|--|
| | | | |
| | | | |

X. Natural Gas Gathering System (NGGS):

| Operator | System | ULSTR of Tie-in | Anticipated Gathering Start Date | Available Maximum Daily Capacity of System Segment Tie-in |
|----------|--------|-----------------|----------------------------------|---|
| | | | | |
| | | | | |

XI. Map. ☐ Attach an accurate and legible map depicting the location of the well(s), the anticipated pipeline route(s) connecting the production operations to the existing or planned interconnect of the natural gas gathering system(s), and the maximum daily capacity of the segment or portion of the natural gas gathering system(s) to which the well(s) will be connected.

XII. Line Capacity. The natural gas gathering system ☐ will ☐ will not have capacity to gather 100% of the anticipated natural gas production volume from the well prior to the date of first production.

XIII. Line Pressure. Operator ☐ does ☐ does not anticipate that its existing well(s) connected to the same segment, or portion, of the natural gas gathering system(s) described above will continue to meet anticipated increases in line pressure caused by the new well(s).

☐ Attach Operator's plan to manage production in response to the increased line pressure.

XIV. Confidentiality: ☐ Operator asserts confidentiality pursuant to Section 71-2-8 NMSA 1978 for the information provided in Section 2 as provided in Paragraph (2) of Subsection D of 19.15.27.9 NMAC, and attaches a full description of the specific information for which confidentiality is asserted and the basis for such assertion.

Section 3 - Certifications**Effective May 25, 2021**

Operator certifies that, after reasonable inquiry and based on the available information at the time of submittal:

☒ Operator will be able to connect the well(s) to a natural gas gathering system in the general area with sufficient capacity to transport one hundred percent of the anticipated volume of natural gas produced from the well(s) commencing on the date of first production, taking into account the current and anticipated volumes of produced natural gas from other wells connected to the pipeline gathering system; or

☐ Operator will not be able to connect to a natural gas gathering system in the general area with sufficient capacity to transport one hundred percent of the anticipated volume of natural gas produced from the well(s) commencing on the date of first production, taking into account the current and anticipated volumes of produced natural gas from other wells connected to the pipeline gathering system.

If Operator checks this box, Operator will select one of the following:

Well Shut-In. ☐ Operator will shut-in and not produce the well until it submits the certification required by Paragraph (4) of Subsection D of 19.15.27.9 NMAC; or

Venting and Flaring Plan. ☐ Operator has attached a venting and flaring plan that evaluates and selects one or more of the potential alternative beneficial uses for the natural gas until a natural gas gathering system is available, including:

- (a) power generation on lease;
- (b) power generation for grid;
- (c) compression on lease;
- (d) liquids removal on lease;
- (e) reinjection for underground storage;
- (f) reinjection for temporary storage;
- (g) reinjection for enhanced oil recovery;
- (h) fuel cell production; and
- (i) other alternative beneficial uses approved by the division.

Section 4 - Notices

1. If, at any time after Operator submits this Natural Gas Management Plan and before the well is spud:

(a) Operator becomes aware that the natural gas gathering system it planned to connect the well(s) to has become unavailable or will not have capacity to transport one hundred percent of the production from the well(s), no later than 20 days after becoming aware of such information, Operator shall submit for OCD's approval a new or revised venting and flaring plan containing the information specified in Paragraph (5) of Subsection D of 19.15.27.9 NMAC; or

(b) Operator becomes aware that it has, cumulatively for the year, become out of compliance with its baseline natural gas capture rate or natural gas capture requirement, no later than 20 days after becoming aware of such information, Operator shall submit for OCD's approval a new or revised Natural Gas Management Plan for each well it plans to spud during the next 90 days containing the information specified in Paragraph (2) of Subsection D of 19.15.27.9 NMAC, and shall file an update for each Natural Gas Management Plan until Operator is back in compliance with its baseline natural gas capture rate or natural gas capture requirement.

2. OCD may deny or conditionally approve an APD if Operator does not make a certification, fails to submit an adequate venting and flaring plan which includes alternative beneficial uses for the anticipated volume of natural gas produced, or if OCD determines that Operator will not have adequate natural gas takeaway capacity at the time a well will be spud.

Page 8

I certify that, after reasonable inquiry, the statements in and attached to this Natural Gas Management Plan are true and correct to the best of my knowledge and acknowledge that a false statement may be subject to civil and criminal penalties under the Oil and Gas Act.

| | |
|---|-----------------------|
| Signature: | <i>Bradley Bishop</i> |
| Printed Name: | BRADLEY BISHOP |
| Title: | REGULATORY MANAGER |
| E-mail Address: | BBISHOP@MEWBOURNE.COM |
| Date: | 5/2/22 |
| Phone: | 575-393-5905 |
| OIL CONSERVATION DIVISION (Only applicable when submitted as a standalone form) | |
| Approved By: | |
| Title: | |
| Approval Date: | |
| Conditions of Approval: | |

Mewbourne Oil Company

Natural Gas Management Plan – Attachment

- VI. Separation equipment will be sized by construction engineering staff based on stated manufacturer daily throughput capacities and anticipated daily production rates to ensure adequate capacity. Closed vent system piping, compression needs, and VRUs will be sized utilizing ProMax modelling software to ensure adequate capacity for anticipated production volumes and conditions.
- VII. Mewbourne Oil Company (MOC) will take following actions to comply with the regulations listed in 19.15.27.8 :
- A. MOC will maximize the recovery of natural gas by minimizing the waste, as defined by 19.15.2 NMAC, of natural gas through venting and flaring. MOC will ensure that well(s) will be connected to a natural gas gathering system with sufficient capacity to transport natural gas. If there is no adequate takeaway for the gas, well(s) will be shut in until the natural gas gathering system is available.
 - B. All drilling operations will be equipped with a rig flare located at least 100 ft from the nearest surface hole. Rig flare will be utilized to combust any natural gas that is brought to surface during normal drilling operations. In the case of emergency venting or flaring the volumes will be estimated and reported appropriately.
 - C. During completion operations any natural gas brought to surface will be flared. Immediately following the finish of completion operations, all well flow will be directed to permanent separation equipment. Produced natural gas from separation equipment will be sent to sales. It is not anticipated that gas will not meet pipeline standards. However, if natural gas does not meet gathering pipeline quality specifications, MOC will flare the natural gas for 60 days or until the natural gas meets the pipeline quality specifications, whichever is sooner. MOC will ensure that the flare is sized properly and is equipped with automatic igniter or continuous pilot. The gas sample will analyzed twice per week and the gas will be routed into a gathering system as soon as pipeline specifications are met.
 - D. Natural gas will not be flared with the exceptions and provisions listed in the 19.15.27.8 D.(1) through (4). If there is no adequate takeaway for the separator gas, well(s) will be shut in until the natural gas gathering system is available with exception of emergency or malfunction situations. Venting and/or flaring volumes will be estimated and reported appropriately.
 - E. MOC will comply with the performance standards requirements and provisions listed in 19.15.27.8 E.(1) through (8). All equipment will be designed and sized to handle maximum anticipated pressures and throughputs in order to minimize the waste. Production storage tanks constructed after May 25, 2021 will be equipped with automatic gauging system. Flares constructed after May 25, 2021 will be equipped with automatic igniter or continuous pilot. Flares will be located at least 100' from the well and storage tanks unless otherwise approved by the division. MOC will conduct AVO inspections as described in 19.15.27.8 E (5) (a) with frequencies specified in 19.15.27.8 E (5) (b) and (c). All emergencies will be resolved as quickly and safely as feasible to minimize waste.
 - F. The volume of natural gas that is vented or flared as the result of malfunction or emergency during drilling and completions operations will be estimated. The volume of natural gas that is vented, flared or beneficially used during production operations, will be measured or estimated. MOC will install equipment to measure

the volume of natural gas flared from existing process piping or a flowline piped from equipment such as high pressure separators, heater treaters, or vapor recovery units associated with a well or facility associated with a well authorized by an APD issued after May 25, 2021 that has an average daily production greater than 60 Mcf/day. If metering is not practicable due to circumstances such as low flow rate or low pressure venting and flaring, MOC will estimate the volume of vented or flared natural gas. Measuring equipment will conform to industry standards and will not be designed or equipped with a manifold that allows the diversion of natural gas around the metering element except for the sole purpose of inspecting and servicing the measurement equipment.

- VIII. For maintenance activities involving production equipment and compression, venting will be limited to the depressurization of the subject equipment to ensure safe working conditions. For maintenance of production and compression equipment the associated producing wells will be shut in to eliminate venting. For maintenance of VRUs all gas normally routed to the VRU will be routed to flare to eliminate venting.

APD ID: 10400090519

Submission Date: 02/22/2023

Highlighted data
reflects the most
recent changes

Operator Name: MEWBOURNE OIL COMPANY

Well Name: RED HILLS WEST 21 FED COM

Well Number: 816H

Well Type: OIL WELL

Well Work Type: Drill

[Show Final Text](#)

Section 1 - Geologic Formations

| Formation ID | Formation Name | Elevation | True Vertical | Measured Depth | Lithologies | Mineral Resources | Producing Formatio |
|--------------|-----------------|-----------|---------------|----------------|--------------------------------|-------------------|--------------------|
| 13410159 | UNKNOWN | 3157 | 28 | 28 | OTHER : Topsoil | NONE | N |
| 13410181 | RUSTLER | 2601 | 556 | 556 | ANHYDRITE, DOLOMITE | USEABLE WATER | N |
| 13410171 | TOP SALT | 2272 | 885 | 885 | SALT | NONE | N |
| 13410174 | BOTTOM SALT | -1029 | 4186 | 4186 | SALT | NONE | N |
| 13410175 | DELAWARE | -1248 | 4405 | 4405 | LIMESTONE | NATURAL GAS, OIL | N |
| 13410173 | BELL CANYON | -1275 | 4432 | 4432 | SANDSTONE | NATURAL GAS, OIL | N |
| 13410167 | CHERRY CANYON | -2258 | 5415 | 5415 | SANDSTONE | NATURAL GAS, OIL | N |
| 13410168 | MANZANITA | -2448 | 5605 | 5605 | SANDSTONE | NATURAL GAS, OIL | N |
| 13410169 | BRUSHY CANYON | -3945 | 7102 | 7102 | SANDSTONE | NATURAL GAS, OIL | N |
| 13410178 | BONE SPRING | -5358 | 8515 | 8515 | LIMESTONE, SHALE | NATURAL GAS, OIL | N |
| 13410179 | BONE SPRING 1ST | -6321 | 9478 | 9478 | SANDSTONE | NATURAL GAS, OIL | N |
| 13410156 | BONE SPRING 2ND | -6963 | 10120 | 10120 | SANDSTONE | NATURAL GAS, OIL | N |
| 13410157 | BONE SPRING 3RD | -8078 | 11235 | 11235 | SANDSTONE | NATURAL GAS, OIL | N |
| 13410158 | WOLFCAMP | -8513 | 11670 | 11670 | LIMESTONE, SANDSTONE, SHALE | NATURAL GAS, OIL | Y |

Section 2 - Blowout Prevention

Well Name: RED HILLS WEST 21 FED COM

Well Number: 816H

Pressure Rating (PSI): 10M

Rating Depth: 17503

Equipment: Annular Pipe Rams Blind Rams Other accessories to the BOP equipment will include a Kelly cock and floor safety valve (inside BOP) and choke lines and choke manifold. See attached schematics.

Requesting Variance? YES

Variance request: A variance is requested for the use of a flexible choke line from the BOP to Choke Manifold. See attached for specs and hydrostatic test chart. Anchors are not required by manufacturer. A variance is requested to use a multi-bowl wellhead. A variance is requested to use a 5M Annular BOP on the 10M BOP stack.

Testing Procedure: BOP/BOPE will be tested by an independent service company to 250 psi low and the high pressure indicated above per Onshore Order 2 requirements. The System may be upgraded to a higher pressure but still tested to the working pressure listed in the table above. If the system is upgraded all the components installed will be functional and tested. Pipe rams will be operationally checked each 24 hour period. Blind rams will be operationally checked on each trip out of the hole. These checks will be noted on the daily tour sheets.

Choke Diagram Attachment:

Red_Hills_West_21_Fed_Com_816H_10M_BOPE_Choke_Diagram_20230220144059.pdf

Red_Hills_West_21_Fed_Com_816H_Flex_Line_Specs_API_16C_20230220144059.pdf

Red_Hills_West_21_Fed_Com_816H_Flex_Line_Specs_20230220144059.pdf

BOP Diagram Attachment:

Red_Hills_West_21_Fed_Com_816H_10M_Annular_BOP_Variance_20230220144108.doc

Red_Hills_West_21_Fed_Com_816H_10M_BOPE_Schematic_20230220144108.pdf

Red_Hills_West_21_Fed_Com_816H_10M_Multi_Bowl_WH_20230220144108.pdf

Section 3 - Casing

| Casing ID | String Type | Hole Size | Csg Size | Condition | Standard | Tapered String | Top Set MD | Bottom Set MD | Top Set TVD | Bottom Set TVD | Top Set MSL | Bottom Set MSL | Calculated casing length MD | Grade | Weight | Joint Type | Collapse SF | Burst SF | Joint SF Type | Joint SF | Body SF Type | Body SF |
|-----------|--------------|-----------|----------|-----------|----------|----------------|------------|---------------|-------------|----------------|-------------|----------------|-----------------------------|-------|--------|------------|-------------|----------|---------------|----------|--------------|---------|
| 1 | SURFACE | 17.5 | 13.375 | NEW | API | N | 0 | 625 | 0 | 625 | 3157 | 2532 | 625 | H-40 | 48 | ST&C | 2.69 | 6.05 | DRY | 10.73 | DRY | 18.03 |
| 2 | INTERMEDIATE | 12.25 | 9.625 | NEW | API | N | 0 | 4330 | 0 | 4330 | | -1173 | 4330 | J-55 | 40 | LT&C | 1.17 | 1.75 | DRY | 3 | DRY | 3.64 |
| 3 | PRODUCTION | 8.75 | 7.0 | NEW | API | N | 0 | 11937 | 0 | 11927 | 3236 | -8770 | 11937 | P-110 | 26 | LT&C | 1.26 | 1.6 | DRY | 2.23 | DRY | 3 |
| 4 | LINER | 6.125 | 4.5 | NEW | API | N | 11737 | 17503 | 11727 | 12505 | -8570 | -9348 | 5766 | P-110 | 13.5 | LT&C | 1.64 | 1.91 | DRY | 4.34 | DRY | 5.42 |

Well Name: RED HILLS WEST 21 FED COM

Well Number: 816H

Casing Attachments

Casing ID: 1 String SURFACE

Inspection Document:

Spec Document:

Tapered String Spec:

Casing Design Assumptions and Worksheet(s):

Red_Hills_West_21_Fed_Com_816H_Csg_Assumptions_20230220144131.doc

Casing ID: 2 String INTERMEDIATE

Inspection Document:

Spec Document:

Tapered String Spec:

Casing Design Assumptions and Worksheet(s):

Red_Hills_West_21_Fed_Com_816H_Csg_Assumptions_20230220144156.doc

Casing ID: 3 String PRODUCTION

Inspection Document:

Spec Document:

Tapered String Spec:

Casing Design Assumptions and Worksheet(s):

Red_Hills_West_21_Fed_Com_816H_Csg_Assumptions_20230220144235.doc

Well Name: RED HILLS WEST 21 FED COM

Well Number: 816H

Casing Attachments

Casing ID: 4 String LINER

Inspection Document:

Spec Document:

Tapered String Spec:

Casing Design Assumptions and Worksheet(s):

Red_Hills_West_21_Fed_Com_816H_Csg_Assumptions_20230220144313.doc

Section 4 - Cement

| String Type | Lead/Tail | Stage Tool Depth | Top MD | Bottom MD | Quantity(sx) | Yield | Density | Cu Ft | Excess% | Cement type | Additives |
|--------------|-----------|------------------|--------|-----------|--------------|-------|---------|-------|---------|-------------|--|
| SURFACE | Lead | | 0 | 433 | 285 | 2.12 | 12.5 | 604 | 100 | Class C | Salt, Gel, Extender, LCM |
| SURFACE | Tail | | 433 | 625 | 200 | 1.34 | 14.8 | 268 | 100 | Class C | Retarder |
| INTERMEDIATE | Lead | | 0 | 3668 | 700 | 2.12 | 12.5 | 1484 | 25 | Class C | Salt, Gel, Extender, LCM |
| INTERMEDIATE | Tail | | 3668 | 4330 | 200 | 1.34 | 14.8 | 268 | 25 | Class C | Retarder |
| PRODUCTION | Lead | 5605 | 4130 | 4905 | 70 | 2.12 | 12.5 | 148 | 25 | Class C | Salt, Gel, Extender, LCM |
| PRODUCTION | Tail | | 4905 | 5605 | 100 | 1.34 | 14.8 | 134 | 25 | Class C | Retarder |
| PRODUCTION | Lead | 5605 | 5605 | 9431 | 340 | 2.12 | 12.5 | 721 | 25 | Class C | Salt, Gel, Extender, LCM |
| PRODUCTION | Tail | | 9431 | 11937 | 400 | 1.18 | 15.6 | 472 | 25 | Class H | Retarder, Fluid Loss, Defoamer |
| LINER | Lead | | 11737 | 17503 | 235 | 2.97 | 11.2 | 698 | 25 | Class H | Salt + Gel + Fluid Loss + Retarder + Dispersant + Defoamer + Anti-Settling Agent |

Well Name: RED HILLS WEST 21 FED COM

Well Number: 816H

Section 5 - Circulating Medium

Mud System Type: Closed

Will an air or gas system be Used? NO

Description of the equipment for the circulating system in accordance with Onshore Order #2:

Diagram of the equipment for the circulating system in accordance with Onshore Order #2:

Describe what will be on location to control well or mitigate other conditions: Lost circulation material, sweeps, mud scavengers

Describe the mud monitoring system utilized: Pason/PVT/visual monitoring

Circulating Medium Table

| Top Depth | Bottom Depth | Mud Type | Min Weight (lbs/gal) | Max Weight (lbs/gal) | Density (lbs/cu ft) | Gel Strength (lbs/100 sqft) | PH | Viscosity (CP) | Salinity (ppm) | Filtration (cc) | Additional Characteristics |
|-----------|--------------|-----------------|----------------------|----------------------|---------------------|-----------------------------|----|----------------|----------------|-----------------|----------------------------|
| 0 | 625 | SPUD MUD | 8.6 | 8.8 | | | | | | | |
| 625 | 4330 | SALT SATURATED | 10 | 10 | | | | | | | |
| 4330 | 11937 | WATER-BASED MUD | 8.6 | 10 | | | | | | | |
| 11937 | 17503 | OIL-BASED MUD | 10 | 13 | | | | | | | |

Section 6 - Test, Logging, Coring

List of production tests including testing procedures, equipment and safety measures:

Will run GR/CNL from top of liner (11,737') to surface.

List of open and cased hole logs run in the well:

DIRECTIONAL SURVEY, MEASUREMENT WHILE DRILLING, MUD LOG/GEOLOGIC LITHOLOGY LOG, CEMENT BOND LOG, GAMMA RAY LOG, COMPENSATED NEUTRON LOG,

Coring operation description for the well:

None

Well Name: RED HILLS WEST 21 FED COM

Well Number: 816H

Section 7 - Pressure

Anticipated Bottom Hole Pressure: 8454

Anticipated Surface Pressure: 5702

Anticipated Bottom Hole Temperature(F): 145

Anticipated abnormal pressures, temperatures, or potential geologic hazards? NO

Describe:

Contingency Plans geohazards description:

Contingency Plans geohazards

Hydrogen Sulfide drilling operations plan required? YES

Hydrogen sulfide drilling operations

Red_Hills_West_21_Fed_Com_816H_H2S_Plan_20230220144629.pdf

Section 8 - Other Information

Proposed horizontal/directional/multi-lateral plan submission:

Red_Hills_West_21_Fed_Com_816H_Dir_Plan_20230220144652.pdf

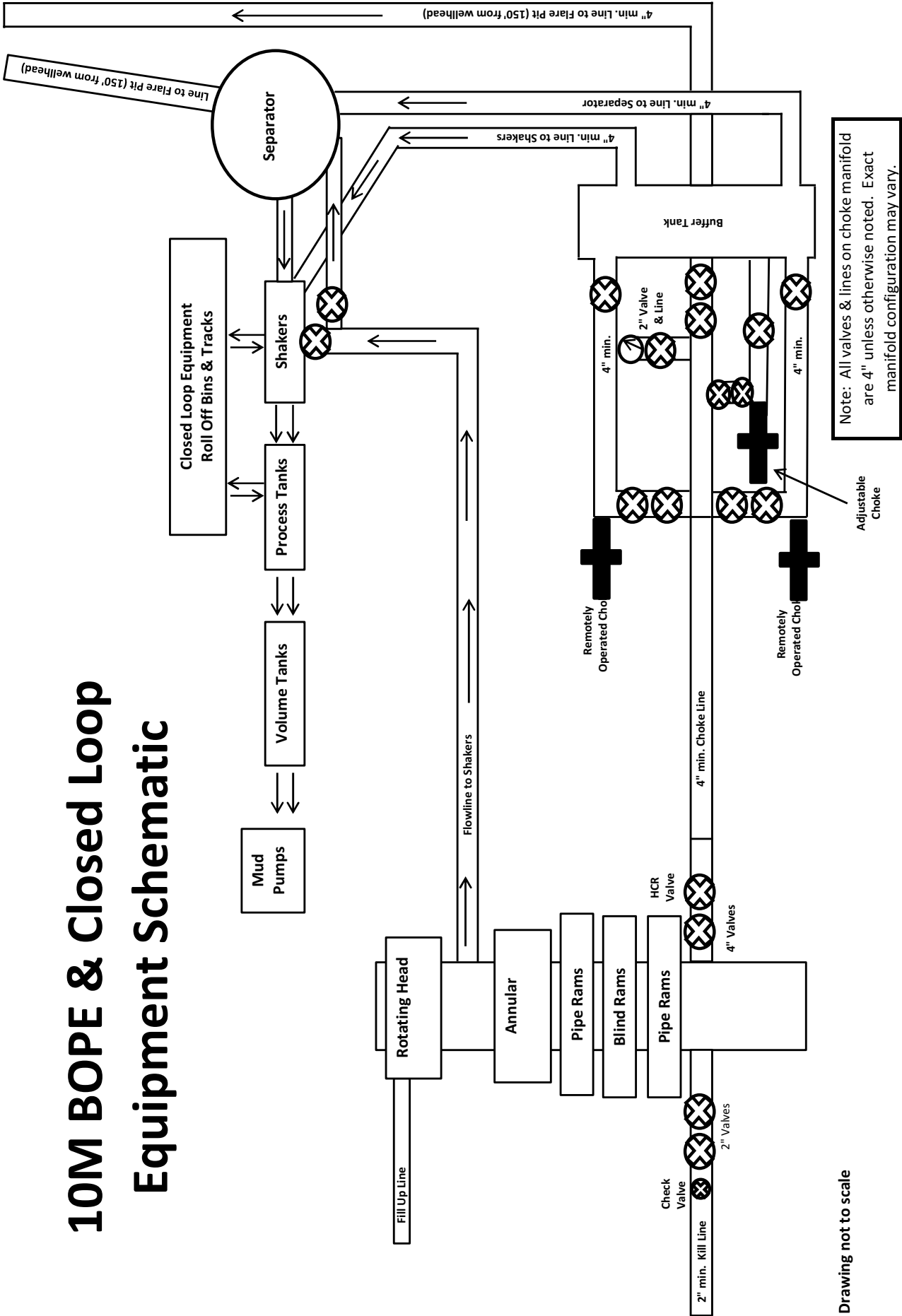
Red_Hills_West_21_Fed_Com_816H_Dir_Plot_20230220144652.pdf

Other proposed operations facets description:

Other proposed operations facets attachment:

Other Variance attachment:

10M BOPE & Closed Loop Equipment Schematic



Drawing not to scale



GATES ENGINEERING & SERVICES NORTH AMERICA
7603 Prairie Oak Dr.
Houston, TX 77086

PHONE: (281) 602 - 4119
FAX:
EMAIL: Troy.Schmidt@gates.com
WEB: www.gates.com

10K CHOKE & KILL ASSEMBLY PRESSURE TEST CERTIFICATE

| | | | |
|----------------------|-------------------------------------|------------------|-------------------------|
| Customer: | A-7 AUSTIN INC DBA AUSTIN HOSE | Test Date: | 8/20/2018 |
| Customer Ref.: | 4101901 | Hose Serial No.: | H-082018-10 |
| Invoice No.: | 511956 | Created By: | Moose Naqvi |
| Product Description: | 10KF3.035.0CK41/1610KFLGFXDxFLT L/E | | |
| End Fitting 1: | 4 1/16 in. Fixed Flange | End Fitting 2: | 4 1/16 in. Float Flange |
| Gates Part No.: | 68503010-9721632 | Assembly Code: | L40695052218H-082018-10 |
| Working Pressure: | 10,000 psi. | Test Pressure: | 15,000 psi. |

Gates Engineering & Services North America certifies that the following hose assembly has successfully passed all pressure testing requirements set forth in Gates specifications: GTS-04-052 (for 5K assemblies) or GTS-04-053 (10K assemblies), which include reference to Specification API 16C (2nd Edition); sections 7.5.4, 7.5.9, and 10.8.7. A test graph will accompany this test certificate to illustrate conformity to test requirements.

Quality: QUALITY
Date : 8/20/2018
Signature : *Moose Naqvi*

Production: PRODUCTION
Date : 8/20/2018
Signature : *[Signature]*

Form PTC - 01 Rev.0 2





GATES E & S NORTH AMERICA, INC.
134 44TH STREET
CORPUS CHRISTI, TEXAS 78405

PHONE: 361-887-9807
FAX: 361-887-0812
EMAIL: Tim.Cantu@gates.com
WEB: www.gates.com

10K CEMENTING ASSEMBLY PRESSURE TEST CERTIFICATE

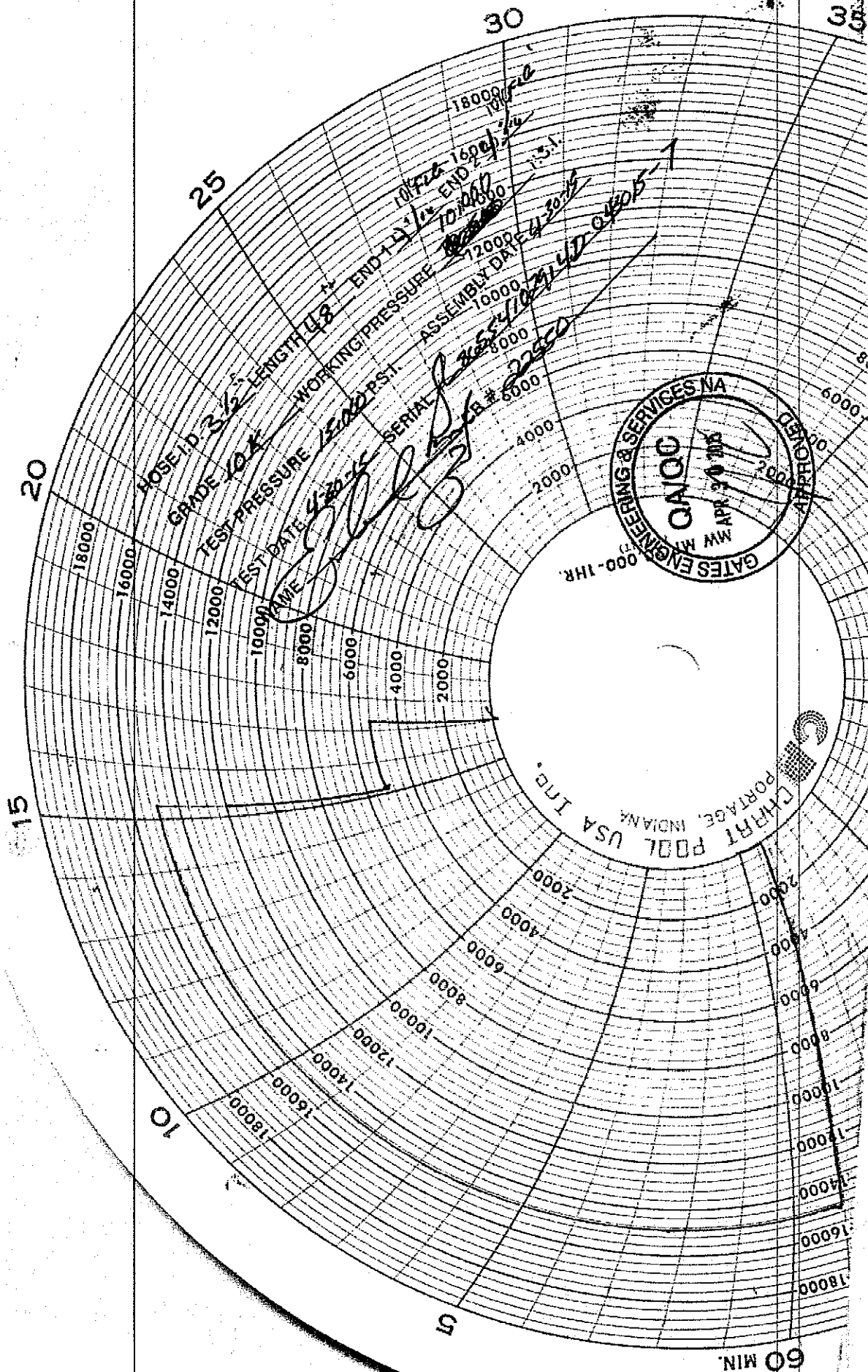
| | | | |
|----------------------|--------------------------------|------------------|------------------------|
| Customer : | AUSTIN DISTRIBUTING | Test Date: | 4/30/2015 |
| Customer Ref. : | 4060578 | Hose Serial No.: | D-043015-7 |
| Invoice No. : | 500506 | Created By: | JUSTIN CROPPER |
| Product Description: | 10K3.548.0CK4.1/1610KFLGE/E LE | | |
| End Fitting 1 : | 4 1/16 10K FLG | End Fitting 2 : | 4 1/16 10K FLG |
| Gates Part No. : | 4773-6290 | Assembly Code : | L36554102914D-043015-7 |
| Working Pressure : | 10,000 PSI | Test Pressure : | 15,000 PSI |

Gates E & S North America, Inc. certifies that the following hose assembly has been tested to the Gates Oilfield Roughneck Agreement/Specification requirements and passed the 15 minute hydrostatic test per API Spec 7K/Q1, Fifth Edition, June 2010, Test pressure 9.6.7 and per Table 9 to 15,000 psi in accordance with this product number. Hose burst pressure 9.6.7.2 exceeds the minimum of 2.5 times the working pressure per Table 9.

| | | | |
|-------------------|-----------------------|-------------|-----------------------|
| Quality Manager : | QUALITY | Production: | PRODUCTION |
| Date : | 4/30/2015 | Date : | 4/30/2015 |
| Signature : | <i>Justin Cropper</i> | Signature : | <i>Justin Cropper</i> |

Form PTC - 01 Rev.02

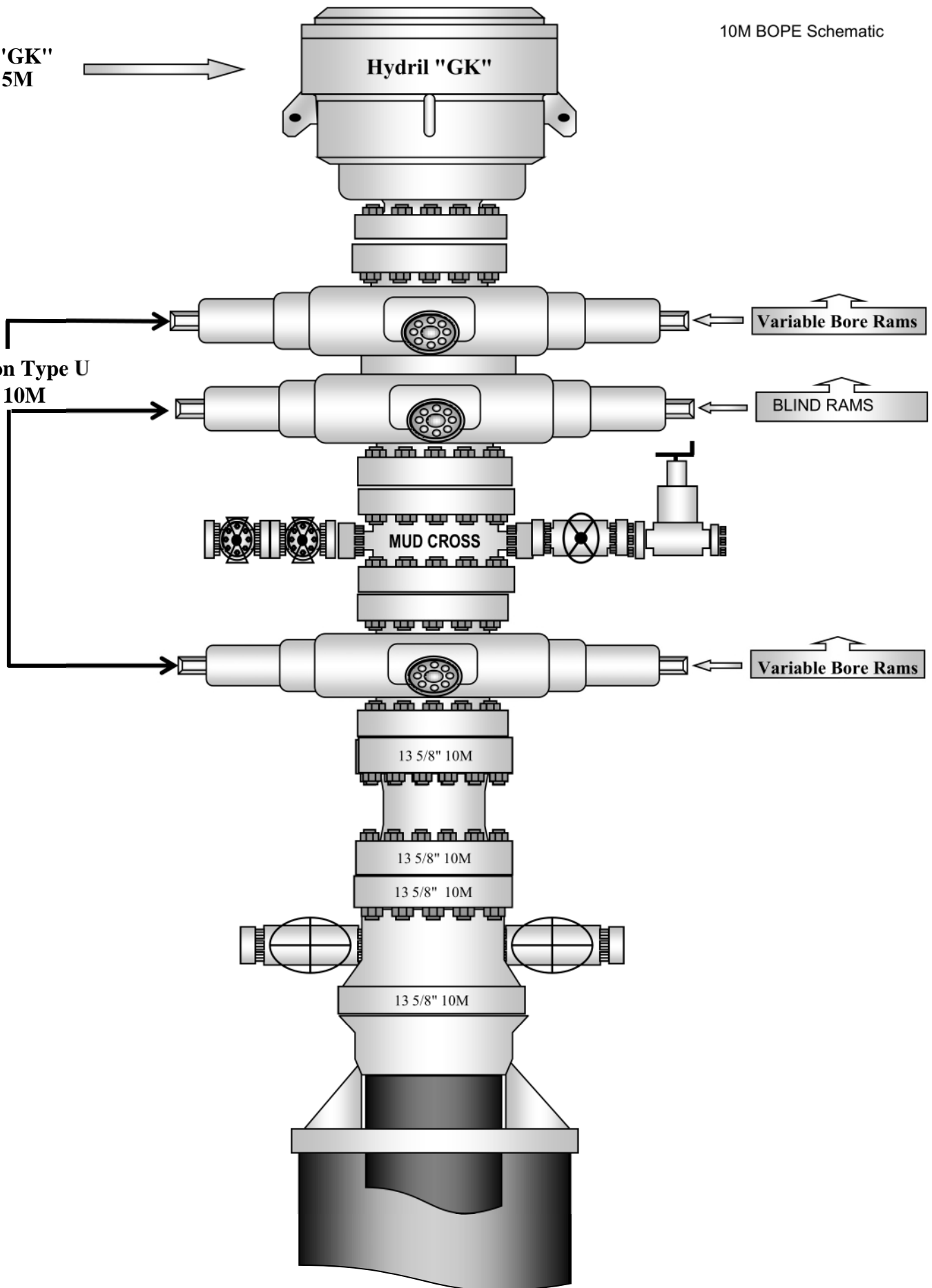




Hydril "GK"
13 5/8" 5M

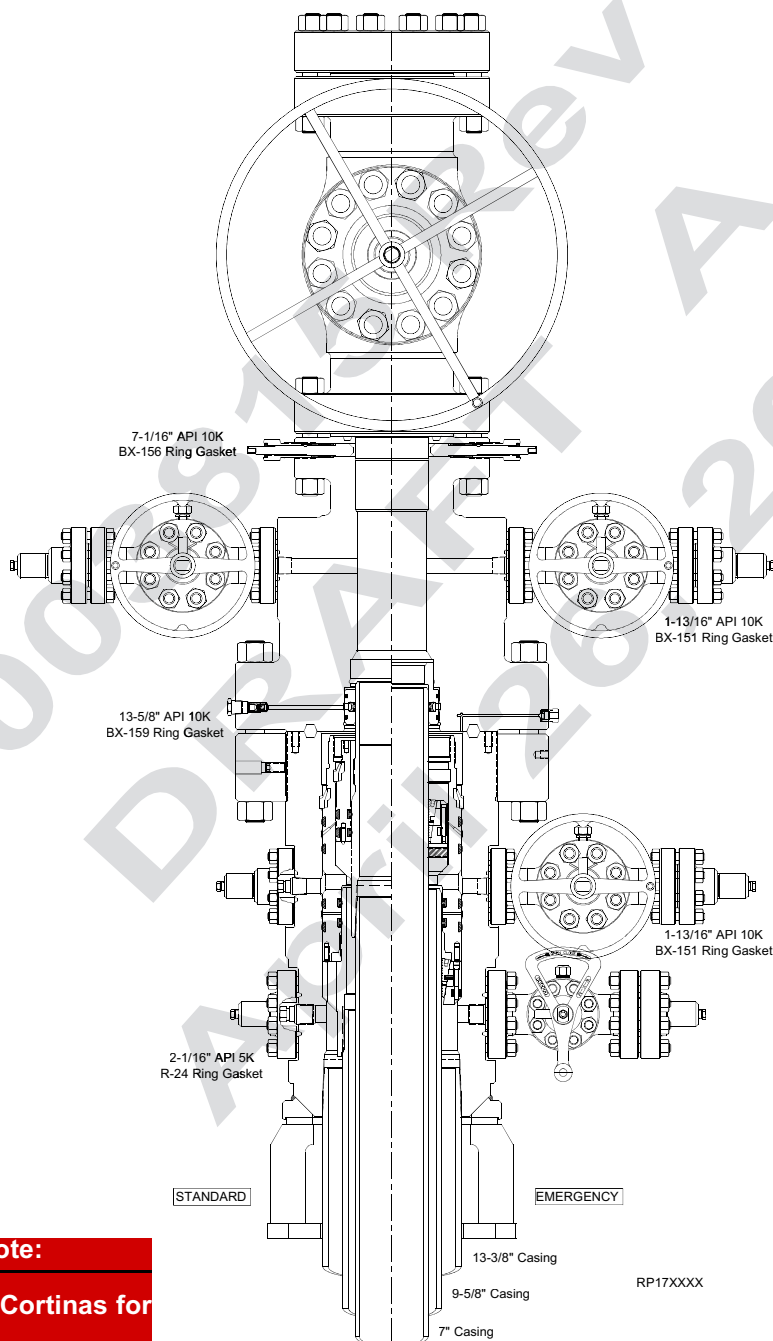
10M BOPE Schematic

Cameron Type U
13-5/8" 10M



RUNNING PROCEDURE

Mewbourne Oil Co

**Publication Status Note:**

Draft A sent to John Cortinas for
review; RA 04/29/17

Surface Systems Publication



13-5/8" 10K MN-DS System
13-3/8" x 9-5/8" x 7" Casing Program

RP-003815
Rev 01 Draft A

Mewbourne Oil Company
Red Hills West 21 Fed Com #816H
Sec 21, T26S, R32E
SL: 250' FNL & 1660' FEL
BHL: 100' FSL & 1360' FEL

| Hole Size | Casing Interval | | Csg. Size | Weight (lbs) | Grade | Conn. | SF Collapse | SF Burst | SF Jt Tension | SF Body Tension |
|---------------------------|-----------------|---------|-----------|--------------|--------|-------|-------------|----------|--------------------|--------------------|
| | From | To | | | | | | | | |
| 17.5" | 0' | 625' | 13.375" | 48 | H40 | STC | 2.69 | 6.05 | 10.73 | 18.03 |
| 12.25" | 0' | 4330' | 9.625" | 40 | J55 | LTC | 1.17 | 1.75 | 3.00 | 3.64 |
| 8.75" | 0' | 11,937' | 7" | 26 | HCP110 | LTC | 1.26 | 1.60 | 2.23 | 3.00 |
| 6.125" | 11,737' | 17,503' | 4.5" | 13.5 | P110 | LTC | 1.64 | 1.91 | 4.34 | 5.42 |
| BLM Minimum Safety Factor | | | | | | | 1.125 | 1 | 1.6 Dry 1.8 Wet | 1.6 Dry 1.8 Wet |

All casing strings will be tested in accordance with Onshore Oil and Gas Order #2 III.B.1.h
 Must have table for contingency casing

| | Y or N |
|--|--------|
| Is casing new? If used, attach certification as required in Onshore Order #1 | Y |
| Is casing API approved? If no, attach casing specification sheet. | Y |
| Is premium or uncommon casing planned? If yes attach casing specification sheet. | N |
| Does the above casing design meet or exceed BLM's minimum standards? If not provide justification (loading assumptions, casing design criteria). | Y |
| Will the pipe be kept at a minimum 1/3 fluid filled to avoid approaching the collapse pressure rating of the casing? | Y |
| Is well located within Capitan Reef? | N |
| If yes, does production casing cement tie back a minimum of 50' above the Reef? | |
| Is well within the designated 4 string boundary. | |
| Is well located in SOPA but not in R-111-P? | N |
| If yes, are the first 2 strings cemented to surface and 3 rd string cement tied back 500' into previous casing? | |
| Is well located in R-111-P and SOPA? | N |
| If yes, are the first three strings cemented to surface? | |
| Is 2 nd string set 100' to 600' below the base of salt? | |
| Is an open annulus used to satisfy R-111-Q? If yes, see cement design. | |
| Is an engineered weak point used to satisfy R-111-Q? | |
| If yes, at what depth is the weak point planned? | |
| Is well located in high Cave/Karst? | Y |
| If yes, are there two strings cemented to surface? | Y |
| (For 2 string wells) If yes, is there a contingency casing if lost circulation occurs? | |
| Is well located in critical Cave/Karst? | N |
| If yes, are there three strings cemented to surface? | |

Mewbourne Oil Company
Red Hills West 21 Fed Com #816H
Sec 21, T26S, R32E
SL: 250' FNL & 1660' FEL
BHL: 100' FSL & 1360' FEL

| Formation | Est. Top | | Formation | Est. Top |
|--------------|----------|--|-----------------------------|----------|
| Rustler | 556 | | Delaware (Lamar) | 4405 |
| Salt Top | 885 | | Bell Canyon | 4432 |
| Salt Base | 4186 | | Cherry Canyon | 5415 |
| Yates | | | Manzanita Marker | 5605 |
| Seven Rivers | | | Basal Brushy Canyon | 7102 |
| Queen | | | Bone Spring | 8515 |
| Capitan | | | 1 st Bone Spring | 9478 |
| Grayburg | | | 2 nd Bone Spring | 10,120 |
| San Andres | | | 3 rd Bone Spring | |
| Glorieta | | | Abo | |
| Yeso | | | Wolfcamp | |

Mewbourne Oil Company

Lea County, New Mexico NAD 83

Red Hills West 21 Fed Com #816H

Sec 21, T26S, R32E

SHL: 250' FNL & 1660' FEL

BHL: 100' FSL & 1360' FEL

Plan: Design #1

Standard Planning Report

16 February, 2023

Planning Report

| | | | |
|-----------|---------------------------------|------------------------------|--|
| Database: | Hobbs | Local Co-ordinate Reference: | Site Red Hills West 21 Fed Com #816H |
| Company: | Mewbourne Oil Company | TVD Reference: | WELL @ 3185.0usft (Original Well Elev) |
| Project: | Lea County, New Mexico NAD 83 | MD Reference: | WELL @ 3185.0usft (Original Well Elev) |
| Site: | Red Hills West 21 Fed Com #816H | North Reference: | Grid |
| Well: | Sec 21, T26S, R32E | Survey Calculation Method: | Minimum Curvature |
| Wellbore: | BHL: 100' FSL & 1360' FEL | | |
| Design: | Design #1 | | |

| | | | |
|-------------|-------------------------------|---------------|----------------|
| Project | Lea County, New Mexico NAD 83 | | |
| Map System: | US State Plane 1983 | System Datum: | Mean Sea Level |
| Geo Datum: | North American Datum 1983 | | |
| Map Zone: | New Mexico Eastern Zone | | |

| | | | | | |
|-----------------------|---------------------------------|--------------|-----------------|------------|--------------|
| Site | Red Hills West 21 Fed Com #816H | | | | |
| Site Position: | | Northing: | 377,045.70 usft | Latitude: | 32.0348787 |
| From: | Map | Easting: | 744,795.90 usft | Longitude: | -103.6767483 |
| Position Uncertainty: | 0.0 usft | Slot Radius: | 13-3/16 " | | |

| | | | | | | |
|----------------------|--------------------|----------|---------------------|-----------------|---------------|--------------|
| Well | Sec 21, T26S, R32E | | | | | |
| Well Position | +N/-S | 0.0 usft | Northing: | 377,045.70 usft | Latitude: | 32.0348787 |
| | +E/-W | 0.0 usft | Easting: | 744,795.90 usft | Longitude: | -103.6767483 |
| Position Uncertainty | | 0.0 usft | Wellhead Elevation: | 3,185.0 usft | Ground Level: | 3,157.0 usft |
| Grid Convergence: | 0.35 ° | | | | | |

| | | | | | |
|-----------|---------------------------|-------------|-----------------|---------------|---------------------|
| Wellbore | BHL: 100' FSL & 1360' FEL | | | | |
| Magnetics | Model Name | Sample Date | Declination (°) | Dip Angle (°) | Field Strength (nT) |
| | IGRF2010 | 12/31/2014 | 7.18 | 59.91 | 48,139.05869401 |

| | | | | | |
|-------------------|-------------------------|--------------|---------------|---------------|--|
| Design | Design #1 | | | | |
| Audit Notes: | | | | | |
| Version: | Phase: | PROTOTYPE | Tie On Depth: | 0.0 | |
| Vertical Section: | Depth From (TVD) (usft) | +N/-S (usft) | +E/-W (usft) | Direction (°) | |
| | 0.0 | 0.0 | 0.0 | 176.11 | |

| | | | | | |
|--------------------------|-----------------|-------------------|---------------------------------|---------|--|
| Plan Survey Tool Program | Date | 2/16/2023 | | | |
| Depth From (usft) | Depth To (usft) | Survey (Wellbore) | Tool Name | Remarks | |
| 1 | 0.0 | 17,503.2 | Design #1 (BHL: 100' FSL & 1360 | | |

| | | | | | | | | | | |
|-----------------------|-----------------|-------------|-----------------------|--------------|--------------|-------------------------|------------------------|-----------------------|---------|---------------------|
| Plan Sections | | | | | | | | | | |
| Measured Depth (usft) | Inclination (°) | Azimuth (°) | Vertical Depth (usft) | +N/-S (usft) | +E/-W (usft) | Dogleg Rate (°/100usft) | Build Rate (°/100usft) | Turn Rate (°/100usft) | TFO (°) | Target |
| 0.0 | 0.00 | 0.00 | 0.0 | 0.0 | 0.0 | 0.00 | 0.00 | 0.00 | 0.00 | |
| 4,400.0 | 0.00 | 0.00 | 4,400.0 | 0.0 | 0.0 | 0.00 | 0.00 | 0.00 | 0.00 | |
| 4,548.8 | 2.98 | 50.89 | 4,548.8 | 2.4 | 3.0 | 2.00 | 2.00 | 0.00 | 50.89 | |
| 11,788.1 | 2.98 | 50.89 | 11,778.3 | 239.6 | 294.7 | 0.00 | 0.00 | 0.00 | 0.00 | |
| 11,936.9 | 0.00 | 0.00 | 11,927.0 | 242.0 | 297.7 | 2.00 | -2.00 | 0.00 | 180.00 | KOP: 10' FNL & 1360 |
| 12,836.3 | 89.94 | 179.54 | 12,500.0 | -330.3 | 302.3 | 10.00 | 10.00 | 0.00 | 179.54 | |
| 17,503.2 | 89.94 | 179.54 | 12,505.0 | -4,997.0 | 339.6 | 0.00 | 0.00 | 0.00 | 0.00 | BHL: 100' FSL & 136 |

Planning Report

| | | | |
|-----------|---------------------------------|------------------------------|--|
| Database: | Hobbs | Local Co-ordinate Reference: | Site Red Hills West 21 Fed Com #816H |
| Company: | Mewbourne Oil Company | TVD Reference: | WELL @ 3185.0usft (Original Well Elev) |
| Project: | Lea County, New Mexico NAD 83 | MD Reference: | WELL @ 3185.0usft (Original Well Elev) |
| Site: | Red Hills West 21 Fed Com #816H | North Reference: | Grid |
| Well: | Sec 21, T26S, R32E | Survey Calculation Method: | Minimum Curvature |
| Wellbore: | BHL: 100' FSL & 1360' FEL | | |
| Design: | Design #1 | | |

| Planned Survey | | | | | | | | | |
|---------------------------|-----------------|-------------|-----------------------|--------------|--------------|-------------------------|-------------------------|------------------------|-----------------------|
| Measured Depth (usft) | Inclination (°) | Azimuth (°) | Vertical Depth (usft) | +N/-S (usft) | +E/-W (usft) | Vertical Section (usft) | Dogleg Rate (°/100usft) | Build Rate (°/100usft) | Turn Rate (°/100usft) |
| 0.0 | 0.00 | 0.00 | 0.0 | 0.0 | 0.0 | 0.0 | 0.00 | 0.00 | 0.00 |
| SHL: 250' FNL & 1660' FEL | | | | | | | | | |
| 100.0 | 0.00 | 0.00 | 100.0 | 0.0 | 0.0 | 0.0 | 0.00 | 0.00 | 0.00 |
| 200.0 | 0.00 | 0.00 | 200.0 | 0.0 | 0.0 | 0.0 | 0.00 | 0.00 | 0.00 |
| 300.0 | 0.00 | 0.00 | 300.0 | 0.0 | 0.0 | 0.0 | 0.00 | 0.00 | 0.00 |
| 400.0 | 0.00 | 0.00 | 400.0 | 0.0 | 0.0 | 0.0 | 0.00 | 0.00 | 0.00 |
| 500.0 | 0.00 | 0.00 | 500.0 | 0.0 | 0.0 | 0.0 | 0.00 | 0.00 | 0.00 |
| 600.0 | 0.00 | 0.00 | 600.0 | 0.0 | 0.0 | 0.0 | 0.00 | 0.00 | 0.00 |
| 700.0 | 0.00 | 0.00 | 700.0 | 0.0 | 0.0 | 0.0 | 0.00 | 0.00 | 0.00 |
| 800.0 | 0.00 | 0.00 | 800.0 | 0.0 | 0.0 | 0.0 | 0.00 | 0.00 | 0.00 |
| 900.0 | 0.00 | 0.00 | 900.0 | 0.0 | 0.0 | 0.0 | 0.00 | 0.00 | 0.00 |
| 1,000.0 | 0.00 | 0.00 | 1,000.0 | 0.0 | 0.0 | 0.0 | 0.00 | 0.00 | 0.00 |
| 1,100.0 | 0.00 | 0.00 | 1,100.0 | 0.0 | 0.0 | 0.0 | 0.00 | 0.00 | 0.00 |
| 1,200.0 | 0.00 | 0.00 | 1,200.0 | 0.0 | 0.0 | 0.0 | 0.00 | 0.00 | 0.00 |
| 1,300.0 | 0.00 | 0.00 | 1,300.0 | 0.0 | 0.0 | 0.0 | 0.00 | 0.00 | 0.00 |
| 1,400.0 | 0.00 | 0.00 | 1,400.0 | 0.0 | 0.0 | 0.0 | 0.00 | 0.00 | 0.00 |
| 1,500.0 | 0.00 | 0.00 | 1,500.0 | 0.0 | 0.0 | 0.0 | 0.00 | 0.00 | 0.00 |
| 1,600.0 | 0.00 | 0.00 | 1,600.0 | 0.0 | 0.0 | 0.0 | 0.00 | 0.00 | 0.00 |
| 1,700.0 | 0.00 | 0.00 | 1,700.0 | 0.0 | 0.0 | 0.0 | 0.00 | 0.00 | 0.00 |
| 1,800.0 | 0.00 | 0.00 | 1,800.0 | 0.0 | 0.0 | 0.0 | 0.00 | 0.00 | 0.00 |
| 1,900.0 | 0.00 | 0.00 | 1,900.0 | 0.0 | 0.0 | 0.0 | 0.00 | 0.00 | 0.00 |
| 2,000.0 | 0.00 | 0.00 | 2,000.0 | 0.0 | 0.0 | 0.0 | 0.00 | 0.00 | 0.00 |
| 2,100.0 | 0.00 | 0.00 | 2,100.0 | 0.0 | 0.0 | 0.0 | 0.00 | 0.00 | 0.00 |
| 2,200.0 | 0.00 | 0.00 | 2,200.0 | 0.0 | 0.0 | 0.0 | 0.00 | 0.00 | 0.00 |
| 2,300.0 | 0.00 | 0.00 | 2,300.0 | 0.0 | 0.0 | 0.0 | 0.00 | 0.00 | 0.00 |
| 2,400.0 | 0.00 | 0.00 | 2,400.0 | 0.0 | 0.0 | 0.0 | 0.00 | 0.00 | 0.00 |
| 2,500.0 | 0.00 | 0.00 | 2,500.0 | 0.0 | 0.0 | 0.0 | 0.00 | 0.00 | 0.00 |
| 2,600.0 | 0.00 | 0.00 | 2,600.0 | 0.0 | 0.0 | 0.0 | 0.00 | 0.00 | 0.00 |
| 2,700.0 | 0.00 | 0.00 | 2,700.0 | 0.0 | 0.0 | 0.0 | 0.00 | 0.00 | 0.00 |
| 2,800.0 | 0.00 | 0.00 | 2,800.0 | 0.0 | 0.0 | 0.0 | 0.00 | 0.00 | 0.00 |
| 2,900.0 | 0.00 | 0.00 | 2,900.0 | 0.0 | 0.0 | 0.0 | 0.00 | 0.00 | 0.00 |
| 3,000.0 | 0.00 | 0.00 | 3,000.0 | 0.0 | 0.0 | 0.0 | 0.00 | 0.00 | 0.00 |
| 3,100.0 | 0.00 | 0.00 | 3,100.0 | 0.0 | 0.0 | 0.0 | 0.00 | 0.00 | 0.00 |
| 3,200.0 | 0.00 | 0.00 | 3,200.0 | 0.0 | 0.0 | 0.0 | 0.00 | 0.00 | 0.00 |
| 3,300.0 | 0.00 | 0.00 | 3,300.0 | 0.0 | 0.0 | 0.0 | 0.00 | 0.00 | 0.00 |
| 3,400.0 | 0.00 | 0.00 | 3,400.0 | 0.0 | 0.0 | 0.0 | 0.00 | 0.00 | 0.00 |
| 3,500.0 | 0.00 | 0.00 | 3,500.0 | 0.0 | 0.0 | 0.0 | 0.00 | 0.00 | 0.00 |
| 3,600.0 | 0.00 | 0.00 | 3,600.0 | 0.0 | 0.0 | 0.0 | 0.00 | 0.00 | 0.00 |
| 3,700.0 | 0.00 | 0.00 | 3,700.0 | 0.0 | 0.0 | 0.0 | 0.00 | 0.00 | 0.00 |
| 3,800.0 | 0.00 | 0.00 | 3,800.0 | 0.0 | 0.0 | 0.0 | 0.00 | 0.00 | 0.00 |
| 3,900.0 | 0.00 | 0.00 | 3,900.0 | 0.0 | 0.0 | 0.0 | 0.00 | 0.00 | 0.00 |
| 4,000.0 | 0.00 | 0.00 | 4,000.0 | 0.0 | 0.0 | 0.0 | 0.00 | 0.00 | 0.00 |
| 4,100.0 | 0.00 | 0.00 | 4,100.0 | 0.0 | 0.0 | 0.0 | 0.00 | 0.00 | 0.00 |
| 4,200.0 | 0.00 | 0.00 | 4,200.0 | 0.0 | 0.0 | 0.0 | 0.00 | 0.00 | 0.00 |
| 4,300.0 | 0.00 | 0.00 | 4,300.0 | 0.0 | 0.0 | 0.0 | 0.00 | 0.00 | 0.00 |
| 4,400.0 | 0.00 | 0.00 | 4,400.0 | 0.0 | 0.0 | 0.0 | 0.00 | 0.00 | 0.00 |
| 4,500.0 | 2.00 | 50.89 | 4,500.0 | 1.1 | 1.4 | -1.0 | 2.00 | 2.00 | 0.00 |
| 4,548.8 | 2.98 | 50.89 | 4,548.8 | 2.4 | 3.0 | -2.2 | 2.00 | 2.00 | 0.00 |
| 4,600.0 | 2.98 | 50.89 | 4,599.9 | 4.1 | 5.1 | -3.8 | 0.00 | 0.00 | 0.00 |
| 4,700.0 | 2.98 | 50.89 | 4,699.7 | 7.4 | 9.1 | -6.8 | 0.00 | 0.00 | 0.00 |
| 4,800.0 | 2.98 | 50.89 | 4,799.6 | 10.7 | 13.1 | -9.8 | 0.00 | 0.00 | 0.00 |
| 4,900.0 | 2.98 | 50.89 | 4,899.5 | 13.9 | 17.1 | -12.7 | 0.00 | 0.00 | 0.00 |
| 5,000.0 | 2.98 | 50.89 | 4,999.3 | 17.2 | 21.2 | -15.7 | 0.00 | 0.00 | 0.00 |
| 5,100.0 | 2.98 | 50.89 | 5,099.2 | 20.5 | 25.2 | -18.7 | 0.00 | 0.00 | 0.00 |

Planning Report

| | | | |
|------------------|---------------------------------|-------------------------------------|--|
| Database: | Hobbs | Local Co-ordinate Reference: | Site Red Hills West 21 Fed Com #816H |
| Company: | Mewbourne Oil Company | TVD Reference: | WELL @ 3185.0usft (Original Well Elev) |
| Project: | Lea County, New Mexico NAD 83 | MD Reference: | WELL @ 3185.0usft (Original Well Elev) |
| Site: | Red Hills West 21 Fed Com #816H | North Reference: | Grid |
| Well: | Sec 21, T26S, R32E | Survey Calculation Method: | Minimum Curvature |
| Wellbore: | BHL: 100' FSL & 1360' FEL | | |
| Design: | Design #1 | | |

| Planned Survey | | | | | | | | | | |
|-----------------------|-----------------|-------------|-----------------------|--------------|--------------|-------------------------|-------------------------|------------------------|-----------------------|--|
| Measured Depth (usft) | Inclination (°) | Azimuth (°) | Vertical Depth (usft) | +N/-S (usft) | +E/-W (usft) | Vertical Section (usft) | Dogleg Rate (°/100usft) | Build Rate (°/100usft) | Turn Rate (°/100usft) | |
| 5,200.0 | 2.98 | 50.89 | 5,199.1 | 23.8 | 29.2 | -21.7 | 0.00 | 0.00 | 0.00 | |
| 5,300.0 | 2.98 | 50.89 | 5,298.9 | 27.0 | 33.3 | -24.7 | 0.00 | 0.00 | 0.00 | |
| 5,400.0 | 2.98 | 50.89 | 5,398.8 | 30.3 | 37.3 | -27.7 | 0.00 | 0.00 | 0.00 | |
| 5,500.0 | 2.98 | 50.89 | 5,498.6 | 33.6 | 41.3 | -30.7 | 0.00 | 0.00 | 0.00 | |
| 5,600.0 | 2.98 | 50.89 | 5,598.5 | 36.9 | 45.4 | -33.7 | 0.00 | 0.00 | 0.00 | |
| 5,700.0 | 2.98 | 50.89 | 5,698.4 | 40.1 | 49.4 | -36.7 | 0.00 | 0.00 | 0.00 | |
| 5,800.0 | 2.98 | 50.89 | 5,798.2 | 43.4 | 53.4 | -39.7 | 0.00 | 0.00 | 0.00 | |
| 5,900.0 | 2.98 | 50.89 | 5,898.1 | 46.7 | 57.4 | -42.7 | 0.00 | 0.00 | 0.00 | |
| 6,000.0 | 2.98 | 50.89 | 5,998.0 | 50.0 | 61.5 | -45.7 | 0.00 | 0.00 | 0.00 | |
| 6,100.0 | 2.98 | 50.89 | 6,097.8 | 53.2 | 65.5 | -48.7 | 0.00 | 0.00 | 0.00 | |
| 6,200.0 | 2.98 | 50.89 | 6,197.7 | 56.5 | 69.5 | -51.7 | 0.00 | 0.00 | 0.00 | |
| 6,300.0 | 2.98 | 50.89 | 6,297.6 | 59.8 | 73.6 | -54.7 | 0.00 | 0.00 | 0.00 | |
| 6,400.0 | 2.98 | 50.89 | 6,397.4 | 63.1 | 77.6 | -57.7 | 0.00 | 0.00 | 0.00 | |
| 6,500.0 | 2.98 | 50.89 | 6,497.3 | 66.3 | 81.6 | -60.7 | 0.00 | 0.00 | 0.00 | |
| 6,600.0 | 2.98 | 50.89 | 6,597.2 | 69.6 | 85.6 | -63.7 | 0.00 | 0.00 | 0.00 | |
| 6,700.0 | 2.98 | 50.89 | 6,697.0 | 72.9 | 89.7 | -66.7 | 0.00 | 0.00 | 0.00 | |
| 6,800.0 | 2.98 | 50.89 | 6,796.9 | 76.2 | 93.7 | -69.6 | 0.00 | 0.00 | 0.00 | |
| 6,900.0 | 2.98 | 50.89 | 6,896.8 | 79.5 | 97.7 | -72.6 | 0.00 | 0.00 | 0.00 | |
| 7,000.0 | 2.98 | 50.89 | 6,996.6 | 82.7 | 101.8 | -75.6 | 0.00 | 0.00 | 0.00 | |
| 7,100.0 | 2.98 | 50.89 | 7,096.5 | 86.0 | 105.8 | -78.6 | 0.00 | 0.00 | 0.00 | |
| 7,200.0 | 2.98 | 50.89 | 7,196.4 | 89.3 | 109.8 | -81.6 | 0.00 | 0.00 | 0.00 | |
| 7,300.0 | 2.98 | 50.89 | 7,296.2 | 92.6 | 113.9 | -84.6 | 0.00 | 0.00 | 0.00 | |
| 7,400.0 | 2.98 | 50.89 | 7,396.1 | 95.8 | 117.9 | -87.6 | 0.00 | 0.00 | 0.00 | |
| 7,500.0 | 2.98 | 50.89 | 7,496.0 | 99.1 | 121.9 | -90.6 | 0.00 | 0.00 | 0.00 | |
| 7,600.0 | 2.98 | 50.89 | 7,595.8 | 102.4 | 125.9 | -93.6 | 0.00 | 0.00 | 0.00 | |
| 7,700.0 | 2.98 | 50.89 | 7,695.7 | 105.7 | 130.0 | -96.6 | 0.00 | 0.00 | 0.00 | |
| 7,800.0 | 2.98 | 50.89 | 7,795.5 | 108.9 | 134.0 | -99.6 | 0.00 | 0.00 | 0.00 | |
| 7,900.0 | 2.98 | 50.89 | 7,895.4 | 112.2 | 138.0 | -102.6 | 0.00 | 0.00 | 0.00 | |
| 8,000.0 | 2.98 | 50.89 | 7,995.3 | 115.5 | 142.1 | -105.6 | 0.00 | 0.00 | 0.00 | |
| 8,100.0 | 2.98 | 50.89 | 8,095.1 | 118.8 | 146.1 | -108.6 | 0.00 | 0.00 | 0.00 | |
| 8,200.0 | 2.98 | 50.89 | 8,195.0 | 122.0 | 150.1 | -111.6 | 0.00 | 0.00 | 0.00 | |
| 8,300.0 | 2.98 | 50.89 | 8,294.9 | 125.3 | 154.1 | -114.6 | 0.00 | 0.00 | 0.00 | |
| 8,400.0 | 2.98 | 50.89 | 8,394.7 | 128.6 | 158.2 | -117.6 | 0.00 | 0.00 | 0.00 | |
| 8,500.0 | 2.98 | 50.89 | 8,494.6 | 131.9 | 162.2 | -120.6 | 0.00 | 0.00 | 0.00 | |
| 8,600.0 | 2.98 | 50.89 | 8,594.5 | 135.1 | 166.2 | -123.6 | 0.00 | 0.00 | 0.00 | |
| 8,700.0 | 2.98 | 50.89 | 8,694.3 | 138.4 | 170.3 | -126.5 | 0.00 | 0.00 | 0.00 | |
| 8,800.0 | 2.98 | 50.89 | 8,794.2 | 141.7 | 174.3 | -129.5 | 0.00 | 0.00 | 0.00 | |
| 8,900.0 | 2.98 | 50.89 | 8,894.1 | 145.0 | 178.3 | -132.5 | 0.00 | 0.00 | 0.00 | |
| 9,000.0 | 2.98 | 50.89 | 8,993.9 | 148.2 | 182.4 | -135.5 | 0.00 | 0.00 | 0.00 | |
| 9,100.0 | 2.98 | 50.89 | 9,093.8 | 151.5 | 186.4 | -138.5 | 0.00 | 0.00 | 0.00 | |
| 9,200.0 | 2.98 | 50.89 | 9,193.7 | 154.8 | 190.4 | -141.5 | 0.00 | 0.00 | 0.00 | |
| 9,300.0 | 2.98 | 50.89 | 9,293.5 | 158.1 | 194.4 | -144.5 | 0.00 | 0.00 | 0.00 | |
| 9,400.0 | 2.98 | 50.89 | 9,393.4 | 161.3 | 198.5 | -147.5 | 0.00 | 0.00 | 0.00 | |
| 9,500.0 | 2.98 | 50.89 | 9,493.3 | 164.6 | 202.5 | -150.5 | 0.00 | 0.00 | 0.00 | |
| 9,600.0 | 2.98 | 50.89 | 9,593.1 | 167.9 | 206.5 | -153.5 | 0.00 | 0.00 | 0.00 | |
| 9,700.0 | 2.98 | 50.89 | 9,693.0 | 171.2 | 210.6 | -156.5 | 0.00 | 0.00 | 0.00 | |
| 9,800.0 | 2.98 | 50.89 | 9,792.8 | 174.4 | 214.6 | -159.5 | 0.00 | 0.00 | 0.00 | |
| 9,900.0 | 2.98 | 50.89 | 9,892.7 | 177.7 | 218.6 | -162.5 | 0.00 | 0.00 | 0.00 | |
| 10,000.0 | 2.98 | 50.89 | 9,992.6 | 181.0 | 222.7 | -165.5 | 0.00 | 0.00 | 0.00 | |
| 10,100.0 | 2.98 | 50.89 | 10,092.4 | 184.3 | 226.7 | -168.5 | 0.00 | 0.00 | 0.00 | |
| 10,200.0 | 2.98 | 50.89 | 10,192.3 | 187.5 | 230.7 | -171.5 | 0.00 | 0.00 | 0.00 | |
| 10,300.0 | 2.98 | 50.89 | 10,292.2 | 190.8 | 234.7 | -174.5 | 0.00 | 0.00 | 0.00 | |
| 10,400.0 | 2.98 | 50.89 | 10,392.0 | 194.1 | 238.8 | -177.5 | 0.00 | 0.00 | 0.00 | |
| 10,500.0 | 2.98 | 50.89 | 10,491.9 | 197.4 | 242.8 | -180.5 | 0.00 | 0.00 | 0.00 | |

Planning Report

| | | | |
|------------------|---------------------------------|-------------------------------------|--|
| Database: | Hobbs | Local Co-ordinate Reference: | Site Red Hills West 21 Fed Com #816H |
| Company: | Mewbourne Oil Company | TVD Reference: | WELL @ 3185.0usft (Original Well Elev) |
| Project: | Lea County, New Mexico NAD 83 | MD Reference: | WELL @ 3185.0usft (Original Well Elev) |
| Site: | Red Hills West 21 Fed Com #816H | North Reference: | Grid |
| Well: | Sec 21, T26S, R32E | Survey Calculation Method: | Minimum Curvature |
| Wellbore: | BHL: 100' FSL & 1360' FEL | | |
| Design: | Design #1 | | |

| Planned Survey | | | | | | | | | |
|--------------------------------------|-----------------|-------------|-----------------------|--------------|--------------|-------------------------|-------------------------|------------------------|-----------------------|
| Measured Depth (usft) | Inclination (°) | Azimuth (°) | Vertical Depth (usft) | +N/-S (usft) | +E/-W (usft) | Vertical Section (usft) | Dogleg Rate (°/100usft) | Build Rate (°/100usft) | Turn Rate (°/100usft) |
| 10,600.0 | 2.98 | 50.89 | 10,591.8 | 200.6 | 246.8 | -183.4 | 0.00 | 0.00 | 0.00 |
| 10,700.0 | 2.98 | 50.89 | 10,691.6 | 203.9 | 250.9 | -186.4 | 0.00 | 0.00 | 0.00 |
| 10,800.0 | 2.98 | 50.89 | 10,791.5 | 207.2 | 254.9 | -189.4 | 0.00 | 0.00 | 0.00 |
| 10,900.0 | 2.98 | 50.89 | 10,891.4 | 210.5 | 258.9 | -192.4 | 0.00 | 0.00 | 0.00 |
| 11,000.0 | 2.98 | 50.89 | 10,991.2 | 213.7 | 262.9 | -195.4 | 0.00 | 0.00 | 0.00 |
| 11,100.0 | 2.98 | 50.89 | 11,091.1 | 217.0 | 267.0 | -198.4 | 0.00 | 0.00 | 0.00 |
| 11,200.0 | 2.98 | 50.89 | 11,191.0 | 220.3 | 271.0 | -201.4 | 0.00 | 0.00 | 0.00 |
| 11,300.0 | 2.98 | 50.89 | 11,290.8 | 223.6 | 275.0 | -204.4 | 0.00 | 0.00 | 0.00 |
| 11,400.0 | 2.98 | 50.89 | 11,390.7 | 226.8 | 279.1 | -207.4 | 0.00 | 0.00 | 0.00 |
| 11,500.0 | 2.98 | 50.89 | 11,490.6 | 230.1 | 283.1 | -210.4 | 0.00 | 0.00 | 0.00 |
| 11,600.0 | 2.98 | 50.89 | 11,590.4 | 233.4 | 287.1 | -213.4 | 0.00 | 0.00 | 0.00 |
| 11,700.0 | 2.98 | 50.89 | 11,690.3 | 236.7 | 291.2 | -216.4 | 0.00 | 0.00 | 0.00 |
| 11,788.1 | 2.98 | 50.89 | 11,778.3 | 239.6 | 294.7 | -219.0 | 0.00 | 0.00 | 0.00 |
| 11,800.0 | 2.74 | 50.89 | 11,790.2 | 239.9 | 295.2 | -219.4 | 2.00 | -2.00 | 0.00 |
| 11,900.0 | 0.74 | 50.89 | 11,890.1 | 241.8 | 297.5 | -221.1 | 2.00 | -2.00 | 0.00 |
| 11,936.9 | 0.00 | 0.00 | 11,927.0 | 242.0 | 297.7 | -221.3 | 2.00 | -2.00 | 0.00 |
| KOP: 10' FNL & 1360' FEL | | | | | | | | | |
| 11,950.0 | 1.31 | 179.54 | 11,940.1 | 241.9 | 297.7 | -221.1 | 10.00 | 10.00 | 0.00 |
| 12,000.0 | 6.31 | 179.54 | 11,990.0 | 238.5 | 297.7 | -217.8 | 10.00 | 10.00 | 0.00 |
| 12,050.0 | 11.31 | 179.54 | 12,039.4 | 230.9 | 297.8 | -210.2 | 10.00 | 10.00 | 0.00 |
| 12,100.0 | 16.31 | 179.54 | 12,087.9 | 219.0 | 297.9 | -198.3 | 10.00 | 10.00 | 0.00 |
| 12,150.0 | 21.31 | 179.54 | 12,135.2 | 202.8 | 298.0 | -182.2 | 10.00 | 10.00 | 0.00 |
| 12,200.0 | 26.31 | 179.54 | 12,181.0 | 182.7 | 298.2 | -162.0 | 10.00 | 10.00 | 0.00 |
| 12,250.0 | 31.31 | 179.54 | 12,224.8 | 158.6 | 298.4 | -138.0 | 10.00 | 10.00 | 0.00 |
| 12,262.4 | 32.55 | 179.54 | 12,235.3 | 152.0 | 298.4 | -131.4 | 10.00 | 10.00 | 0.00 |
| FTP: 100' FNL & 1360' FEL | | | | | | | | | |
| 12,300.0 | 36.31 | 179.54 | 12,266.3 | 130.8 | 298.6 | -110.2 | 10.00 | 10.00 | 0.00 |
| 12,350.0 | 41.31 | 179.54 | 12,305.2 | 99.5 | 298.8 | -79.0 | 10.00 | 10.00 | 0.00 |
| 12,400.0 | 46.31 | 179.54 | 12,341.3 | 64.9 | 299.1 | -44.4 | 10.00 | 10.00 | 0.00 |
| 12,450.0 | 51.31 | 179.54 | 12,374.2 | 27.2 | 299.4 | -6.9 | 10.00 | 10.00 | 0.00 |
| 12,500.0 | 56.31 | 179.54 | 12,403.7 | -13.1 | 299.7 | 33.4 | 10.00 | 10.00 | 0.00 |
| 12,550.0 | 61.31 | 179.54 | 12,429.6 | -55.9 | 300.1 | 76.1 | 10.00 | 10.00 | 0.00 |
| 12,600.0 | 66.31 | 179.54 | 12,451.7 | -100.7 | 300.4 | 120.8 | 10.00 | 10.00 | 0.00 |
| 12,650.0 | 71.31 | 179.54 | 12,469.8 | -147.3 | 300.8 | 167.4 | 10.00 | 10.00 | 0.00 |
| 12,700.0 | 76.31 | 179.54 | 12,483.7 | -195.3 | 301.2 | 215.3 | 10.00 | 10.00 | 0.00 |
| 12,750.0 | 81.31 | 179.54 | 12,493.4 | -244.3 | 301.6 | 264.2 | 10.00 | 10.00 | 0.00 |
| 12,800.0 | 86.31 | 179.54 | 12,498.8 | -294.0 | 302.0 | 313.8 | 10.00 | 10.00 | 0.00 |
| 12,836.3 | 89.94 | 179.54 | 12,500.0 | -330.3 | 302.3 | 350.0 | 10.00 | 10.00 | 0.00 |
| LP: 578' FNL & 1360' FEL | | | | | | | | | |
| 12,900.0 | 89.94 | 179.54 | 12,500.1 | -394.0 | 302.8 | 413.6 | 0.00 | 0.00 | 0.00 |
| 13,000.0 | 89.94 | 179.54 | 12,500.2 | -494.0 | 303.6 | 513.4 | 0.00 | 0.00 | 0.00 |
| 13,100.0 | 89.94 | 179.54 | 12,500.3 | -594.0 | 304.4 | 613.3 | 0.00 | 0.00 | 0.00 |
| 13,200.0 | 89.94 | 179.54 | 12,500.4 | -694.0 | 305.2 | 713.1 | 0.00 | 0.00 | 0.00 |
| 13,300.0 | 89.94 | 179.54 | 12,500.5 | -794.0 | 306.0 | 812.9 | 0.00 | 0.00 | 0.00 |
| 13,400.0 | 89.94 | 179.54 | 12,500.6 | -894.0 | 306.8 | 912.7 | 0.00 | 0.00 | 0.00 |
| 13,500.0 | 89.94 | 179.54 | 12,500.7 | -994.0 | 307.6 | 1,012.5 | 0.00 | 0.00 | 0.00 |
| 13,600.0 | 89.94 | 179.54 | 12,500.8 | -1,094.0 | 308.4 | 1,112.4 | 0.00 | 0.00 | 0.00 |
| 13,700.0 | 89.94 | 179.54 | 12,500.9 | -1,194.0 | 309.2 | 1,212.2 | 0.00 | 0.00 | 0.00 |
| 13,800.0 | 89.94 | 179.54 | 12,501.0 | -1,294.0 | 310.0 | 1,312.0 | 0.00 | 0.00 | 0.00 |
| 13,900.0 | 89.94 | 179.54 | 12,501.1 | -1,394.0 | 310.8 | 1,411.8 | 0.00 | 0.00 | 0.00 |
| 14,000.0 | 89.94 | 179.54 | 12,501.2 | -1,494.0 | 311.6 | 1,511.6 | 0.00 | 0.00 | 0.00 |
| 14,100.0 | 89.94 | 179.54 | 12,501.4 | -1,594.0 | 312.4 | 1,611.5 | 0.00 | 0.00 | 0.00 |
| 14,200.0 | 89.94 | 179.54 | 12,501.5 | -1,694.0 | 313.2 | 1,711.3 | 0.00 | 0.00 | 0.00 |

Planning Report

| | | | |
|------------------|---------------------------------|-------------------------------------|--|
| Database: | Hobbs | Local Co-ordinate Reference: | Site Red Hills West 21 Fed Com #816H |
| Company: | Mewbourne Oil Company | TVD Reference: | WELL @ 3185.0usft (Original Well Elev) |
| Project: | Lea County, New Mexico NAD 83 | MD Reference: | WELL @ 3185.0usft (Original Well Elev) |
| Site: | Red Hills West 21 Fed Com #816H | North Reference: | Grid |
| Well: | Sec 21, T26S, R32E | Survey Calculation Method: | Minimum Curvature |
| Wellbore: | BHL: 100' FSL & 1360' FEL | | |
| Design: | Design #1 | | |

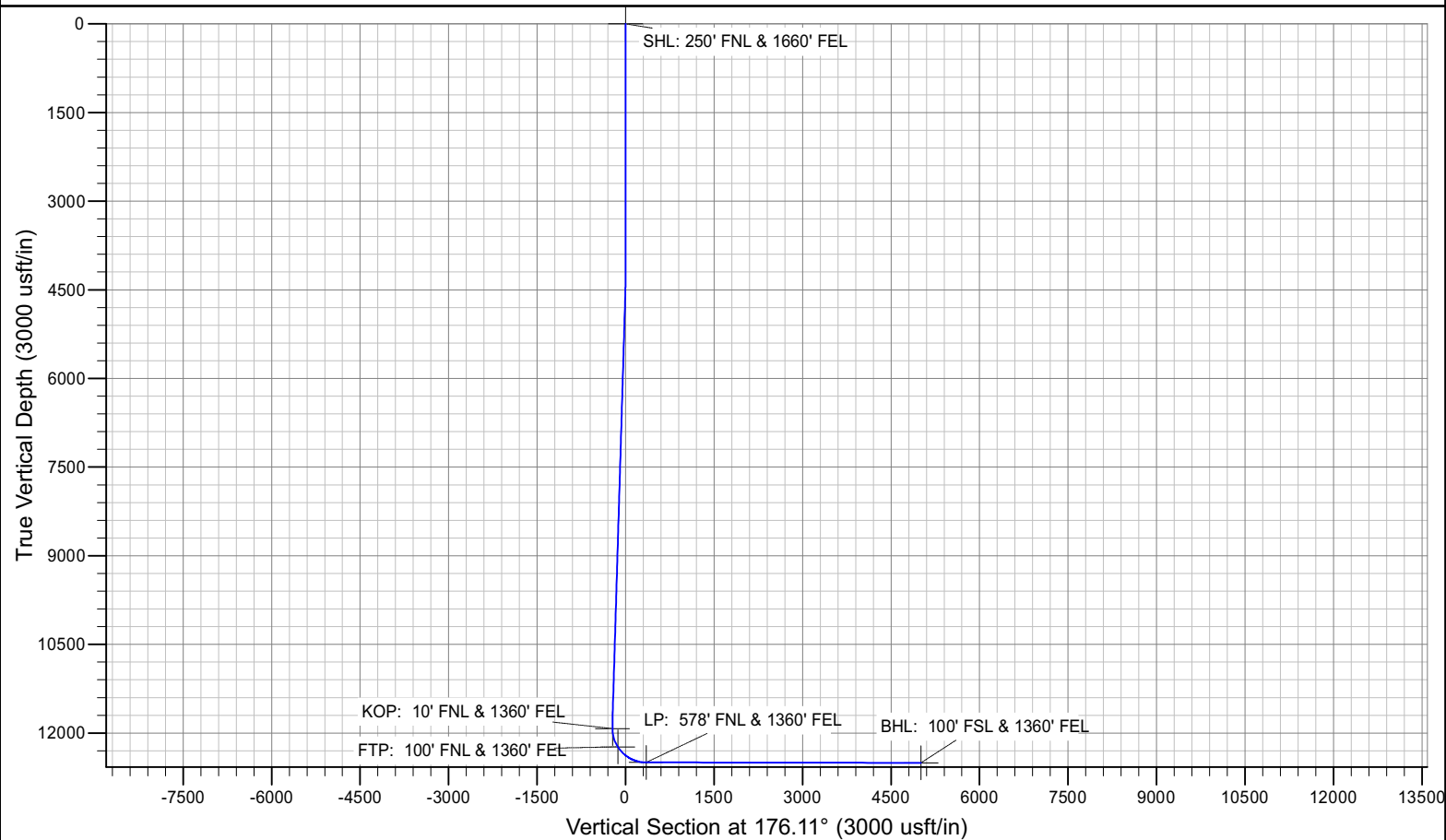
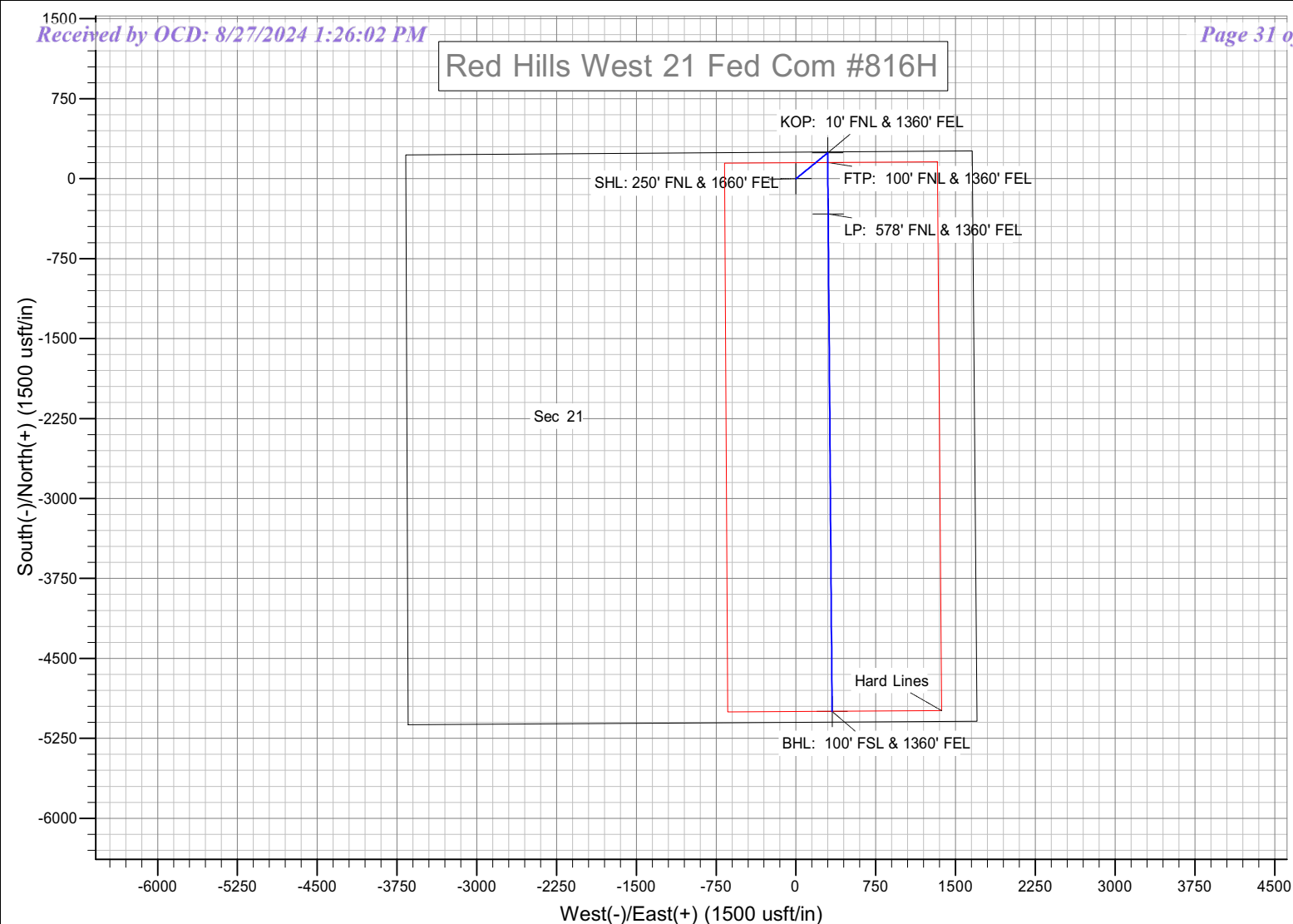
| Planned Survey | | | | | | | | | |
|-----------------------------|-----------------|-------------|-----------------------|--------------|--------------|-------------------------|-------------------------|------------------------|-----------------------|
| Measured Depth (usft) | Inclination (°) | Azimuth (°) | Vertical Depth (usft) | +N/-S (usft) | +E/-W (usft) | Vertical Section (usft) | Dogleg Rate (°/100usft) | Build Rate (°/100usft) | Turn Rate (°/100usft) |
| 14,300.0 | 89.94 | 179.54 | 12,501.6 | -1,793.9 | 314.0 | 1,811.1 | 0.00 | 0.00 | 0.00 |
| 14,400.0 | 89.94 | 179.54 | 12,501.7 | -1,893.9 | 314.8 | 1,910.9 | 0.00 | 0.00 | 0.00 |
| 14,500.0 | 89.94 | 179.54 | 12,501.8 | -1,993.9 | 315.6 | 2,010.8 | 0.00 | 0.00 | 0.00 |
| 14,600.0 | 89.94 | 179.54 | 12,501.9 | -2,093.9 | 316.4 | 2,110.6 | 0.00 | 0.00 | 0.00 |
| 14,700.0 | 89.94 | 179.54 | 12,502.0 | -2,193.9 | 317.2 | 2,210.4 | 0.00 | 0.00 | 0.00 |
| 14,800.0 | 89.94 | 179.54 | 12,502.1 | -2,293.9 | 318.0 | 2,310.2 | 0.00 | 0.00 | 0.00 |
| 14,900.0 | 89.94 | 179.54 | 12,502.2 | -2,393.9 | 318.8 | 2,410.0 | 0.00 | 0.00 | 0.00 |
| 14,928.7 | 89.94 | 179.54 | 12,502.2 | -2,422.6 | 319.0 | 2,438.7 | 0.00 | 0.00 | 0.00 |
| PPP2: 2674' FSL & 1360' FEL | | | | | | | | | |
| 15,000.0 | 89.94 | 179.54 | 12,502.3 | -2,493.9 | 319.6 | 2,509.9 | 0.00 | 0.00 | 0.00 |
| 15,100.0 | 89.94 | 179.54 | 12,502.4 | -2,593.9 | 320.4 | 2,609.7 | 0.00 | 0.00 | 0.00 |
| 15,200.0 | 89.94 | 179.54 | 12,502.5 | -2,693.9 | 321.2 | 2,709.5 | 0.00 | 0.00 | 0.00 |
| 15,300.0 | 89.94 | 179.54 | 12,502.6 | -2,793.9 | 322.0 | 2,809.3 | 0.00 | 0.00 | 0.00 |
| 15,400.0 | 89.94 | 179.54 | 12,502.7 | -2,893.9 | 322.8 | 2,909.1 | 0.00 | 0.00 | 0.00 |
| 15,500.0 | 89.94 | 179.54 | 12,502.9 | -2,993.9 | 323.6 | 3,009.0 | 0.00 | 0.00 | 0.00 |
| 15,600.0 | 89.94 | 179.54 | 12,503.0 | -3,093.9 | 324.4 | 3,108.8 | 0.00 | 0.00 | 0.00 |
| 15,700.0 | 89.94 | 179.54 | 12,503.1 | -3,193.9 | 325.2 | 3,208.6 | 0.00 | 0.00 | 0.00 |
| 15,800.0 | 89.94 | 179.54 | 12,503.2 | -3,293.9 | 326.0 | 3,308.4 | 0.00 | 0.00 | 0.00 |
| 15,900.0 | 89.94 | 179.54 | 12,503.3 | -3,393.9 | 326.8 | 3,408.2 | 0.00 | 0.00 | 0.00 |
| 16,000.0 | 89.94 | 179.54 | 12,503.4 | -3,493.9 | 327.6 | 3,508.1 | 0.00 | 0.00 | 0.00 |
| 16,100.0 | 89.94 | 179.54 | 12,503.5 | -3,593.9 | 328.4 | 3,607.9 | 0.00 | 0.00 | 0.00 |
| 16,200.0 | 89.94 | 179.54 | 12,503.6 | -3,693.9 | 329.2 | 3,707.7 | 0.00 | 0.00 | 0.00 |
| 16,300.0 | 89.94 | 179.54 | 12,503.7 | -3,793.9 | 330.0 | 3,807.5 | 0.00 | 0.00 | 0.00 |
| 16,400.0 | 89.94 | 179.54 | 12,503.8 | -3,893.9 | 330.8 | 3,907.3 | 0.00 | 0.00 | 0.00 |
| 16,500.0 | 89.94 | 179.54 | 12,503.9 | -3,993.9 | 331.6 | 4,007.2 | 0.00 | 0.00 | 0.00 |
| 16,600.0 | 89.94 | 179.54 | 12,504.0 | -4,093.9 | 332.4 | 4,107.0 | 0.00 | 0.00 | 0.00 |
| 16,700.0 | 89.94 | 179.54 | 12,504.1 | -4,193.9 | 333.2 | 4,206.8 | 0.00 | 0.00 | 0.00 |
| 16,800.0 | 89.94 | 179.54 | 12,504.2 | -4,293.9 | 334.0 | 4,306.6 | 0.00 | 0.00 | 0.00 |
| 16,900.0 | 89.94 | 179.54 | 12,504.4 | -4,393.9 | 334.8 | 4,406.5 | 0.00 | 0.00 | 0.00 |
| 17,000.0 | 89.94 | 179.54 | 12,504.5 | -4,493.9 | 335.6 | 4,506.3 | 0.00 | 0.00 | 0.00 |
| 17,100.0 | 89.94 | 179.54 | 12,504.6 | -4,593.9 | 336.4 | 4,606.1 | 0.00 | 0.00 | 0.00 |
| 17,200.0 | 89.94 | 179.54 | 12,504.7 | -4,693.9 | 337.2 | 4,705.9 | 0.00 | 0.00 | 0.00 |
| 17,300.0 | 89.94 | 179.54 | 12,504.8 | -4,793.9 | 338.0 | 4,805.7 | 0.00 | 0.00 | 0.00 |
| 17,400.0 | 89.94 | 179.54 | 12,504.9 | -4,893.8 | 338.8 | 4,905.6 | 0.00 | 0.00 | 0.00 |
| 17,503.2 | 89.94 | 179.54 | 12,505.0 | -4,997.0 | 339.6 | 5,008.5 | 0.00 | 0.00 | 0.00 |
| BHL: 100' FSL & 1360' FEL | | | | | | | | | |

Planning Report

| | | | |
|-----------|---------------------------------|------------------------------|--|
| Database: | Hobbs | Local Co-ordinate Reference: | Site Red Hills West 21 Fed Com #816H |
| Company: | Mewbourne Oil Company | TVD Reference: | WELL @ 3185.0usft (Original Well Elev) |
| Project: | Lea County, New Mexico NAD 83 | MD Reference: | WELL @ 3185.0usft (Original Well Elev) |
| Site: | Red Hills West 21 Fed Com #816H | North Reference: | Grid |
| Well: | Sec 21, T26S, R32E | Survey Calculation Method: | Minimum Curvature |
| Wellbore: | BHL: 100' FSL & 1360' FEL | | |
| Design: | Design #1 | | |

| Design Targets | | | | | | | | | |
|---|-----------|----------|----------|----------|--------|------------|------------|------------|--------------|
| Target Name | | | | | | | | | |
| - hit/miss target | Dip Angle | Dip Dir. | TVD | +N/-S | +E/-W | Northing | Easting | Latitude | Longitude |
| - Shape | (°) | (°) | (usft) | (usft) | (usft) | (usft) | (usft) | | |
| SHL: 250' FNL & 1660' F - plan hits target center - Point | 0.00 | 0.00 | 0.0 | 0.0 | 0.0 | 377,045.70 | 744,795.90 | 32.0348787 | -103.6767483 |
| KOP: 10' FNL & 1360' F - plan hits target center - Point | 0.00 | 0.00 | 11,927.0 | 242.0 | 297.7 | 377,287.70 | 745,093.60 | 32.0355389 | -103.6757829 |
| FTP: 100' FNL & 1360' I - plan hits target center - Point | 0.00 | 0.00 | 12,235.3 | 152.0 | 298.4 | 377,197.70 | 745,094.32 | 32.0352915 | -103.6757823 |
| LP: 578' FNL & 1360' FI - plan hits target center - Point | 0.00 | 0.01 | 12,500.0 | -330.3 | 302.3 | 376,715.40 | 745,098.17 | 32.0339657 | -103.6757794 |
| PPP2: 2674' FSL & 1360' I - plan hits target center - Point | 0.00 | 0.00 | 12,502.2 | -2,422.6 | 319.0 | 374,623.10 | 745,114.91 | 32.0282141 | -103.6757665 |
| BHL: 100' FSL & 1360' I - plan hits target center - Point | 0.00 | 0.00 | 12,505.0 | -4,997.0 | 339.6 | 372,048.70 | 745,135.50 | 32.0211372 | -103.6757506 |

Red Hills West 21 Fed Com #816H



Intent ☒ As Drilled ☐

| | | |
|-------------------------------------|---|---------------------|
| API # | | |
| Operator Name: Mewbourne Oil Co. | Property Name: Red Hills West 21 Fed Com | Well Number 816H |

Kick Off Point (KOP)

| | | | | | | | | | |
|------------------------|---------------|-----------------|--------------|-----|---------------------------|---------------|--------------|---------------|---------------|
| UL B | Section 21 | Township 26S | Range 32E | Lot | Feet 10 | From N/S N | Feet 1360 | From E/W E | County Lea |
| Latitude 32.0355389 | | | | | Longitude -103.6757829 | | | NAD 83 | |

First Take Point (FTP)

| | | | | | | | | | |
|------------------------|---------------|-----------------|--------------|-----|---------------------------|---------------|--------------|---------------|---------------|
| UL B | Section 21 | Township 26S | Range 32E | Lot | Feet 100 | From N/S N | Feet 1360 | From E/W E | County Lea |
| Latitude 32.0352915 | | | | | Longitude -103.6757823 | | | NAD 83 | |

Last Take Point (LTP)

| | | | | | | | | | |
|------------------------|---------------|-----------------|--------------|-----|---------------------------|---------------|--------------|---------------|---------------|
| UL O | Section 21 | Township 26S | Range 32E | Lot | Feet 100 | From N/S S | Feet 1360 | From E/W E | County Lea |
| Latitude 32.0211371 | | | | | Longitude -103.6757505 | | | NAD 83 | |

Is this well the defining well for the Horizontal Spacing Unit? ☒Is this well an infill well? ☐

If infill is yes please provide API if available, Operator Name and well number for Defining well for Horizontal Spacing Unit.

| | | |
|----------------|----------------|-------------|
| API # | | |
| Operator Name: | Property Name: | Well Number |

KZ 06/29/2018

PECOS DISTRICT DRILLING CONDITIONS OF APPROVAL

| | |
|-----------------------|-----------------------------------|
| OPERATOR'S NAME: | MEWBOURNE OIL COMPANY |
| WELL NAME & NO.: | RED HILLS WEST 21 FED COM 816H |
| APD ID: | 10400090519 |
| SURFACE HOLE FOOTAGE: | 250'/N & 1660'/E |
| BOTTOM HOLE FOOTAGE: | 100'/S & 1360'/E |
| SURFACE LOCATION: | Section 21, T.26 S., R.32 E. NMP. |
| COUNTY: | Lea County, New Mexico |

COA

| | | | |
|----------------------|---|--|---------------------------------------|
| H ₂ S | <input checked="" type="radio"/> Yes | <input type="radio"/> No | |
| Potash | <input checked="" type="radio"/> None | <input type="radio"/> Secretary | <input type="radio"/> R-111-P |
| Cave/Karst Potential | <input type="radio"/> Low | <input checked="" type="radio"/> Medium | <input type="radio"/> High |
| Cave/Karst Potential | <input type="radio"/> Critical | | |
| Variance | <input type="radio"/> None | <input checked="" type="radio"/> Flex Hose | <input type="radio"/> Other |
| Wellhead | <input type="radio"/> Conventional | <input checked="" type="radio"/> Multibowl | <input type="radio"/> Both |
| Other | <input type="checkbox"/> 4 String | <input type="checkbox"/> Capitan Reef | <input type="checkbox"/> WIPP |
| Other | <input type="checkbox"/> Fluid Filled | <input type="checkbox"/> Pilot Hole | <input type="checkbox"/> Open Annulus |
| Special Requirements | <input type="checkbox"/> Water Disposal | <input checked="" type="checkbox"/> COM | <input type="checkbox"/> Unit |

A. HYDROGEN SULFIDE

A Hydrogen Sulfide (H₂S) Drilling Plan shall be activated **AT SPUD**. As a result, the Hydrogen Sulfide area must meet **43 CFR 3176** requirements, which includes equipment and personnel/public protection items. If Hydrogen Sulfide is encountered, please provide measured values and formations to the BLM.

B. CASING DESIGN

1. The **13-3/8** inch surface casing shall be set at approximately **625 ft.** (a minimum of 25 feet (Lea County) into the Rustler Anhydrite and above the salt) and cemented to the surface. **If salt is encountered, set casing at least 25 ft. above the salt.**
 - a. If cement does not circulate to the surface, the appropriate BLM office shall be notified and a temperature survey utilizing an electronic-type temperature survey with surface log readout will be used or a cement bond log shall be run to verify the top of the cement. Temperature survey will be run a minimum of six hours after pumping cement and ideally between 8-10 hours after completing the cement job.
 - b. Wait on cement (WOC) time for a primary cement job will be a minimum of **8 hours** or **500 psi compressive strength**, whichever is greater. (This is to include the lead cement)

- c. Wait on cement (WOC) time for a remedial job will be a minimum of 4 hours after bringing cement to surface or 500 psi compressive strength, whichever is greater.
 - d. If cement falls back, remedial cementing will be done prior to drilling out that string.
2. The **9-5/8 inch** intermediate casing shall be set in a competent bed at approximately **4,330 ft.** The minimum required fill of cement behind the **9-5/8 inch** intermediate casing is:
 - **Cement to surface.** If cement does not circulate see B.1.a, c-d above. Wait on cement (WOC) time for a primary cement job is to include the lead cement slurry due to **Cave/Karst**.
 - ❖ In Medium Cave/Karst Areas if cement does not circulate to surface on the first two casing strings, the cement on the 3rd casing string must come to surface.
3. Operator has proposed to set **7 inch 26# HCP-110** production casing at approximately **11,937 ft.** (11,927 ft. TVD). The minimum required fill of cement behind the **7 in.** production casing is:

Option 1 (Single Stage): Cement should tie-back **at least 200 feet** into previous casing string. Operator shall provide method of verification. Wait on cement (WOC) time for a primary cement job is to include the lead cement slurry due to **Cave/Karst**.

Option 2 (Two-stage): Operator has proposed a DV tool, the depth may be adjusted as long as the cement is changed proportionally. The DV tool may be cancelled if cement circulates to surface on the first stage.

- a. **First stage to DV tool:** Cement to circulate. If cement does not circulate off the DV tool, contact the appropriate BLM office before proceeding with second stage cement job.
 - b. **Second stage above DV tool:** Cement should tie-back **at least 200 feet** into previous casing string. Operator shall provide method of verification. If cement does not circulate, contact the appropriate BLM office. Wait on cement (WOC) time for a primary cement job is to include the lead cement slurry due to **Cave/Karst**.
4. The minimum required fill of cement behind the **4-1/2 in.** production liner is:
 - Cement should tie-back **at least 100 feet** into previous casing string. Operator shall provide method of verification.

C. PRESSURE CONTROL

1. Variance approved to use **flex line** from BOP to choke manifold. Manufacturer's specification to be readily available. No external damage to flex line. Flex line to be installed as straight as possible (no hard bends).
2. Operator has proposed a multi-bowl wellhead assembly. This assembly will only be tested when installed on the surface casing. Minimum working pressure of the blowout preventer (BOP) and related equipment (BOPE) required for drilling below the surface casing shoe shall be **10,000 (10M) psi. Variance is approved to use a 5M annular preventer along with 10M BOP/BOPE.** The BOP/BOPE and annular preventer shall be pressure-tested in accordance with **title 43 CFR 3172.**
 - a. Wellhead shall be installed by manufacturer's representatives, submit documentation with subsequent sundry.
 - b. If the welding is performed by a third party, the manufacturer's representative shall monitor the temperature to verify that it does not exceed the maximum temperature of the seal.
 - c. Manufacturer representative shall install the test plug for the initial BOP test.
 - d. If the cement does not circulate and one-inch operations would have been possible with a standard wellhead, the well head shall be cut off, cementing operations performed and another wellhead installed.
 - e. Whenever any seal subject to test pressure is broken, all the tests in the **title 43 CFR 3172.6(b)(9)** must be followed.

D. SPECIAL REQUIREMENT (S)

Communitization Agreement

- The operator will submit a Communitization Agreement to the Santa Fe Office, 301 Dinosaur Trail Santa Fe, New Mexico 87508, at least 90 days before the anticipated date of first production from a well subject to a spacing order issued by the New Mexico Oil Conservation Division. The Communitization Agreement will include the signatures of all working interest owners in all Federal and Indian leases subject to the Communitization Agreement (i.e., operating rights owners and lessees of record), or certification that the operator has obtained the written signatures of all such owners and will make those signatures available to the BLM immediately upon request.
- If the operator does not comply with this condition of approval, the BLM may take enforcement actions that include, but are not limited to, those specified in 43 CFR 3163.1.
- In addition, the well sign shall include the surface and bottom hole lease numbers. When the Communitization Agreement number is known, it shall also be on the sign.

GENERAL REQUIREMENTS

The BLM is to be notified in advance for a representative to witness:

- a. Spudding well (minimum of 24 hours)
- b. Setting and/or Cementing of all casing strings (minimum of 4 hours)
- c. BOPE tests (minimum of 4 hours)

☒ Eddy County

EMAIL or call the Carlsbad Field Office, 620 East Greene St., Carlsbad, NM 88220,

BLM_NM_CFO_DrillingNotifications@BLM.GOV

(575) 361-2822

☒ Lea County

Call the Hobbs Field Station, 414 West Taylor, Hobbs NM 88240, (575) 689-5981

1. Unless the production casing has been run and cemented or the well has been properly plugged, the drilling rig shall not be removed from over the hole without prior approval.
 - a. In the event the operator has proposed to drill multiple wells utilizing a skid/walking rig. Operator shall secure the wellbore on the current well, after installing and testing the wellhead, by installing a blind flange of like pressure rating to the wellhead and a pressure gauge that can be monitored while drilling is performed on the other well(s).
 - b. When the operator proposes to set surface casing with Spudder Rig
 - Notify the BLM when moving in and removing the Spudder Rig.
 - Notify the BLM when moving in the 2nd Rig. Rig to be moved in within 90 days of notification that Spudder Rig has left the location.
 - BOP/BOPE test to be conducted per **title 43 CFR 3172**
 - as soon as 2nd Rig is rigged up on well.
2. Floor controls are required for 3M or Greater systems. These controls will be on the rig floor, unobstructed, readily accessible to the driller and will be operational at all times during drilling and/or completion activities. Rig floor is defined as the area immediately around the rotary table; the area immediately above the substructure on which the draw works are located, this does not include the dog house or stairway area.
3. The record of the drilling rate along with the GR/N well log run from TD to surface (horizontal well – vertical portion of hole) shall be submitted to the BLM office as well as all other logs run on the borehole 30 days from completion. If available, a digital copy of the logs is to be submitted in addition to the paper copies. The Rustler top and top and bottom of Salt are to be recorded on the Completion Report.

A. CASING

1. Changes to the approved APD casing program need prior approval if the items substituted are of lesser grade or different casing size or are Non-API. The Operator can exchange the components of the proposal with that of superior strength (i.e. changing from J-55 to N-80, or from 36# to 40#). Changes to the approved cement program need prior approval if the altered cement plan has less volume or strength or if the changes are substantial (i.e. Multistage tool, ECP, etc.). The initial wellhead installed on the well will remain on the well with spools used as needed.
2. Wait on cement (WOC) for Potash Areas: After cementing but before commencing any tests, the casing string shall stand cemented under pressure until both of the following conditions have been met: 1) cement reaches a minimum compressive strength of 500 psi for all cement blends, 2) until cement has been in place at least 24 hours. WOC time will be recorded in the driller's log. The casing integrity test can be done (prior to the cement setting up) immediately after bumping the plug.
3. Wait on cement (WOC) for Water Basin: After cementing but before commencing any tests, the casing string shall stand cemented under pressure until both of the following conditions have been met: 1) cement reaches a minimum compressive strength of 500 psi at the shoe, 2) until cement has been in place at least 8 hours. WOC time will be recorded in the driller's log. See individual casing strings for details regarding lead cement slurry requirements. The casing integrity test can be done (prior to the cement setting up) immediately after bumping the plug.
4. Provide compressive strengths including hours to reach required 500 pounds compressive strength prior to cementing each casing string. Have well specific cement details onsite prior to pumping the cement for each casing string.
5. No pea gravel permitted for remedial or fall back remedial without prior authorization from the BLM engineer.
6. On that portion of any well approved for a 5M BOPE system or greater, a pressure integrity test of each casing shoe shall be performed. Formation at the shoe shall be tested to a minimum of the mud weight equivalent anticipated to control the formation pressure to the next casing depth or at total depth of the well. This test shall be performed before drilling more than 20 feet of new hole.
7. If hardband drill pipe is rotated inside casing, returns will be monitored for metal. If metal is found in samples, drill pipe will be pulled and rubber protectors which have a larger diameter than the tool joints of the drill pipe will be installed prior to continuing drilling operations.
8. Whenever a casing string is cemented in the R-111-P potash area, the NMOCD requirements shall be followed.

B. PRESSURE CONTROL

1. All blowout preventer (BOP) and related equipment (BOPE) shall comply with well control requirements as described in the **title 43 CFR 3172** and **API STD 53 Sec. 5.3**.
2. If a variance is approved for a flexible hose to be installed from the BOP to the choke manifold, the following requirements apply: The flex line must meet the requirements of API 16C. Check condition of flexible line from BOP to choke manifold, replace if exterior is damaged or if line fails test. Line to be as straight as possible with no hard bends and is to be anchored according to Manufacturer's requirements. The flexible hose can be exchanged with a hose of equal size and equal or greater pressure rating. Anchor requirements, specification sheet and hydrostatic pressure test certification matching the hose in service, to be onsite for review. These documents shall be posted in the company man's trailer and on the rig floor.
3. 5M or higher system requires an HCR valve, remote kill line and annular to match. The remote kill line is to be installed prior to testing the system and tested to stack pressure.
4. If the operator has proposed a multi-bowl wellhead assembly in the APD. The following requirements must be met:
 - a. Wellhead shall be installed by manufacturer's representatives, submit documentation with subsequent sundry.
 - b. If the welding is performed by a third party, the manufacturer's representative shall monitor the temperature to verify that it does not exceed the maximum temperature of the seal.
 - c. Manufacturer representative shall install the test plug for the initial BOP test.
 - d. Whenever any seal subject to test pressure is broken, all the tests in the **title 43 CFR 3172.6(b)(9)** must be followed.
 - e. If the cement does not circulate and one-inch operations would have been possible with a standard wellhead, the well head shall be cut off, cementing operations performed and another wellhead installed.
5. The appropriate BLM office shall be notified a minimum of 4 hours in advance for a representative to witness the tests.
 - a. In a water basin, for all casing strings utilizing slips, these are to be set as soon as the crew and rig are ready and any fallback cement remediation has been done. The casing cut-off and BOP installation can be initiated four hours after installing the slips, which will be approximately six hours after bumping the plug. For those casing strings not using slips, the minimum wait time before cut-off is eight hours after bumping the plug. BOP/BOPE testing can begin after cut-off or once cement reaches 500 psi compressive strength (including

lead cement), whichever is greater. However, if the float does not hold, cut-off cannot be initiated until cement reaches 500 psi compressive strength (including lead when specified).

- b. In potash areas, for all casing strings utilizing slips, these are to be set as soon as the crew and rig are ready and any fallback cement remediation has been done. For all casing strings, casing cut-off and BOP installation can be initiated at twelve hours after bumping the cement plug. The BOPE test can be initiated after bumping the cement plug with the casing valve open. (only applies to single stage cement jobs, prior to the cement setting up.)
- c. The tests shall be done by an independent service company utilizing a test plug not a cup or J-packer and can be initiated immediately with the casing valve open. The operator also has the option of utilizing an independent tester to test without a plug (i.e. against the casing) pursuant to **43 CFR 3172** with the pressure not to exceed 70% of the burst rating for the casing. Any test against the casing must meet the WOC time for water basin (8 hours) or potash (24 hours) or 500 pounds compressive strength, whichever is greater, prior to initiating the test (see casing segment as lead cement may be critical item).
- d. The test shall be run on a 5000-psi chart for a 2-3M BOP/BOP, on a 10000-psi chart for a 5M BOP/BOPE and on a 15000-psi chart for a 10M BOP/BOPE. If a linear chart is used, it shall be a one-hour chart. A circular chart shall have a maximum 2-hour clock. If a twelve hour or twenty-four-hour chart is used, tester shall make a notation that it is run with a two-hour clock.
- e. The results of the test shall be reported to the appropriate BLM office.
- f. All tests are required to be recorded on a calibrated test chart. A copy of the BOP/BOPE test chart and a copy of independent service company test will be submitted to the appropriate BLM office.
- g. The BOP/BOPE test shall include a low-pressure test from 250 to 300 psi. The test will be held for a minimum of 10 minutes if test is done with a test plug and 30 minutes without a test plug. This test shall be performed prior to the test at full stack pressure.
- h. BOP/BOPE must be tested by an independent service company within 500 feet of the top of the Wolfcamp formation if the time between the setting of the intermediate casing and reaching this depth exceeds 20 days. This test does not exclude the test prior to drilling out the casing shoe as per **43 CFR 3172**.

C. DRILLING MUD

Mud system monitoring equipment, with derrick floor indicators and visual and audio alarms, shall be operating before drilling into the Wolfcamp formation, and shall be used until production casing is run and cemented.

D. WASTE MATERIAL AND FLUIDS

All waste (i.e. drilling fluids, trash, salts, chemicals, sewage, gray water, etc.) created as a result of drilling operations and completion operations shall be safely contained and disposed of properly at a waste disposal facility. No waste material or fluid shall be disposed of on the well location or surrounding area. Porto-johns and trash containers will be on-location during fracturing operations or any other crew-intensive operations.

SA 05/07/2024

Hydrogen Sulfide Drilling Operations Plan
Mewbourne Oil Company

1. General Requirements

Rule 118 does not apply to this well because MOC has researched this area and no high concentrations of H₂S were found. MOC will have on location and working all H₂S safety equipment before the Delaware formation for purposes of safety and insurance requirements.

2. Hydrogen Sulfide Training

All personnel, whether regularly assigned, contracted, or employed on an unscheduled basis, will have received training from a qualified instructor in the following areas prior to entering the drilling pad area of the well:

1. The hazards and characteristics of hydrogen sulfide gas.
2. The proper use of personal protective equipment and life support systems.
3. The proper use of hydrogen sulfide detectors, alarms, warning systems, briefing areas, evacuation procedures.
4. The proper techniques for first aid and rescue operations.

Additionally, supervisory personnel will be trained in the following areas:

- 1 The effects of hydrogen sulfide on metal components. If high tensile tubular systems are utilized, supervisory personnel will be trained in their special maintenance requirements.
- 2 Corrective action and shut in procedures, blowout prevention, and well control procedures while drilling a well.
- 3 The contents of the Hydrogen Sulfide Drilling Operations Plan.

There will be an initial training session prior to encountering a known hydrogen sulfide source. The initial training session shall include a review of the site specific Hydrogen Sulfide Drilling Operations Plan.

3. Hydrogen Sulfide Safety Equipment and Systems

All hydrogen sulfide safety equipment and systems will be installed, tested, and operational prior to drilling below the 9 5/8" intermediate casing.

1. Well Control Equipment
 - A. Choke manifold with minimum of one adjustable choke/remote choke.
 - B. Blowout preventers equipped with blind rams and pipe rams to accommodate all pipe sizes with properly sized closing unit
 - C. Auxiliary equipment including annular type blowout preventer.
2. Protective Equipment for Essential Personnel

Thirty minute self contained work unit located in the dog house and at briefing areas.

Additionally: If H₂S is encountered in concentrations less than 10 ppm, fans will be placed in work areas to prevent the accumulation of hazardous amounts of poisonous gas. If higher concentrations of H₂S are detected the well will be shut in and a rotating head, mud/gas separator, remote choke and flare line with igniter will be installed.

3. Hydrogen Sulfide Protection and Monitoring Equipment

Two portable hydrogen sulfide monitors positioned on location for optimum coverage and detection. The units shall have audible sirens to notify personnel when hydrogen sulfide levels exceed 20 PPM.

4. Visual Warning Systems

A. Wind direction indicators as indicated on the wellsite diagram.

B. Caution signs shall be posted on roads providing access to location. Signs shall be painted a high visibility color with lettering of sufficient size to be readable at reasonable distances from potentially contaminated areas.

4. **Mud Program**

The mud program has been designed to minimize the amount of hydrogen sulfide entrained in the mud system. Proper mud weight, safe drilling practices, and the use of hydrogen sulfide scavengers will minimize hazards while drilling the well.

5. **Metallurgy**

All tubular systems, wellheads, blowout preventers, drilling spools, kill lines, choke manifolds, and valves shall be suitable for service in a hydrogen sulfide environment when chemically treated.

6. **Communications**

State & County Officials phone numbers are posted on rig floor and supervisors trailer. Communications in company vehicles and toolpushers are either two way radios or cellular phones.

7. **Well Testing**

Drill stem testing is not an anticipated requirement for evaluation of this well. If a drill stem test is required, it will be conducted with a minimum number of personnel in the immediate vicinity. The test will be conducted during daylight hours only.

8. **Emergency Phone Numbers**

| | |
|---|----------------------------|
| Eddy County Sheriff's Office | 911 or 575-887-7551 |
| Ambulance Service | 911 or 575-885-2111 |
| Carlsbad Fire Dept | 911 or 575-885-2111 |
| Loco Hills Volunteer Fire Dept. | 911 or 575-677-3266 |
| Closest Medical Facility - Columbia Medical Center of Carlsbad | 575-492-5000 |

| | | |
|------------------------------|------------------------------|---------------------|
| Mewbourne Oil Company | Hobbs District Office | 575-393-5905 |
| | Fax | 575-397-6252 |
| | 2nd Fax | 575-393-7259 |

| | | |
|--------------------------------|-----------------------|---------------------|
| District Manager | Robin Terrell | 575-390-4816 |
| Drilling Superintendent | Frosty Lathan | 575-390-4103 |
| | Bradley Bishop | 575-390-6838 |
| Drilling Foreman | Wesley Noseff | 575-441-0729 |

Operator Name: MEWBOURNE OIL COMPANY

Well Name: RED HILLS WEST 21 FED COM

Well Number: 816H

Waste type: SEWAGE

Waste content description: Human waste & grey water

Amount of waste: 1500 gallons

Waste disposal frequency : Weekly

Safe containment description: 2,000 gallon plastic container

Safe containmant attachment:

Waste disposal type: HAUL TO COMMERCIAL Disposal location ownership: PRIVATE FACILITY

Disposal type description:

Disposal location description: City of Carlsbad Water Treatment facility

Waste type: GARBAGE

Waste content description: Garbage & Trash

Amount of waste: 1500 pounds

Waste disposal frequency : One Time Only

Safe containment description: Enclosed trash trailer

Safe containmant attachment:

Waste disposal type: HAUL TO COMMERCIAL Disposal location ownership: PRIVATE FACILITY

Disposal type description:

Disposal location description: Waste Management facility in Carlsbad.

Reserve Pit

Reserve Pit being used? NO

Temporary disposal of produced water into reserve pit? NO

Reserve pit length (ft.) Reserve pit width (ft.)

Reserve pit depth (ft.) Reserve pit volume (cu. yd.)

Is at least 50% of the reserve pit in cut?

Reserve pit liner

Reserve pit liner specifications and installation description

Cuttings Area

Cuttings Area being used? NO

Are you storing cuttings on location? N

Operator Name: MEWBOURNE OIL COMPANY**Well Name:** RED HILLS WEST 21 FED COM**Well Number:** 816H**Description of cuttings location****Cuttings area length (ft.)****Cuttings area width (ft.)****Cuttings area depth (ft.)****Cuttings area volume (cu. yd.)****Is at least 50% of the cuttings area in cut?****WCuttings area liner****Cuttings area liner specifications and installation description****Section 8 - Ancillary****Are you requesting any Ancillary Facilities?:** N**Ancillary Facilities****Comments:****Section 9 - Well Site****Well Site Layout Diagram:**

Red_Hills_West_21_Fed_Com_816H_WellSiteLayout_20230222112106.pdf

Comments: NONE**Section 10 - Plans for Surface Reclamation****Type of disturbance:** New Surface Disturbance**Multiple Well Pad Name:** Red Hills West 22 AP/BO Fed Com wells**Multiple Well Pad Number:** 6**Recontouring****Drainage/Erosion control construction:** NONE**Drainage/Erosion control reclamation:** NONE**Well pad proposed disturbance (acres):** 4.6**Well pad interim reclamation (acres):** 0.67**Well pad long term disturbance (acres):** 3.93**Road proposed disturbance (acres):** 0.42**Road interim reclamation (acres):** 0**Road long term disturbance (acres):** 0**Powerline proposed disturbance (acres):** 0**Powerline interim reclamation (acres):** 0**Powerline long term disturbance (acres):** 0**Pipeline proposed disturbance (acres):** 0**Pipeline interim reclamation (acres):** 0**Pipeline long term disturbance (acres):** 0**Other proposed disturbance (acres):** 0**Other interim reclamation (acres):** 0**Other long term disturbance (acres):** 0**Total proposed disturbance:** 5.02**Total interim reclamation:** 0.67**Total long term disturbance:** 3.93

District I
1625 N. French Dr., Hobbs, NM 88240
Phone:(575) 393-6161 Fax:(575) 393-0720
District II
811 S. First St., Artesia, NM 88210
Phone:(575) 748-1283 Fax:(575) 748-9720
District III
1000 Rio Brazos Rd., Aztec, NM 87410
Phone:(505) 334-6178 Fax:(505) 334-6170
District IV
1220 S. St Francis Dr., Santa Fe, NM 87505
Phone:(505) 476-3470 Fax:(505) 476-3462

State of New Mexico
Energy, Minerals and Natural Resources
Oil Conservation Division
1220 S. St Francis Dr.
Santa Fe, NM 87505

CONDITIONS

Action 378402

CONDITIONS

| | |
|---|---|
| Operator: MEWBOURNE OIL CO P.O. Box 5270 Hobbs, NM 88241 | OGRID: |
| | 14744 |
| | Action Number: 378402 |
| | Action Type: [C-101] BLM - Federal/Indian Land Lease (Form 3160-3) |

CONDITIONS

| Created By | Condition | Condition Date |
|------------|--|----------------|
| pkautz | Will require a File As Drilled C-102 and a Directional Survey with the C-104 | 9/16/2024 |
| pkautz | Once the well is spud, to prevent ground water contamination through whole or partial conduits from the surface, the operator shall drill without interruption through the fresh water zone or zones and shall immediately set in cement the water protection string | 9/16/2024 |
| pkautz | Oil base muds are not to be used until fresh water zones are cased and cemented providing isolation from the oil or diesel. This includes synthetic oils. Oil based mud, drilling fluids and solids must be contained in a steel closed loop system | 9/16/2024 |
| pkautz | Cement is required to circulate on both surface and intermediate1 strings of casing | 9/16/2024 |
| pkautz | If cement does not circulate on any string, a CBL is required for that string of casing | 9/16/2024 |