

C-102 Submit Electronically Via OCD Permitting	State of New Mexico Energy, Minerals & Natural Resources Department OIL CONSERVATION DIVISION	Revised July 9, 2024	
		Submittal Type:	<input type="checkbox"/> Initial Submittal
			<input type="checkbox"/> Amended Report
		<input type="checkbox"/> As Drilled	

WELL LOCATION INFORMATION

API Number	Pool Code 97565	Pool Name N SEVEN RIVERS GLORIETA-YESO
Property Code	Property Name BARBARA 17 FED COM	Well Number 206H
OGRID No.	Operator Name SILVERBACK OPERATING II, LLC	Ground Level Elevation 3,550.0'
Surface Owner: <input type="checkbox"/> State <input type="checkbox"/> Fee <input type="checkbox"/> Tribal <input type="checkbox"/> Federal		Mineral Owner: <input type="checkbox"/> State <input type="checkbox"/> Fee <input type="checkbox"/> Tribal <input type="checkbox"/> Federal

Surface Location

UL A	Section 18	Township 19S	Range 25E	Lot	Ft. from N/S 969 NORTH	Ft. from E/W 375 EAST	Latitude (NAD 83) 32.665727°	Longitude (NAD 83) -104.516811°	County EDDY
---------	---------------	-----------------	--------------	-----	---------------------------	--------------------------	---------------------------------	------------------------------------	----------------

Bottom Hole Location

UL A	Section 17	Township 19S	Range 25E	Lot	Ft. from N/S 1,199 NORTH	Ft. from E/W 100 EAST	Latitude (NAD 83) 32.665032°	Longitude (NAD 83) -104.498621°	County EDDY
---------	---------------	-----------------	--------------	-----	-----------------------------	--------------------------	---------------------------------	------------------------------------	----------------

Dedicated Acres 320	Infill or Defining Well	Defining Well API	Overlapping Spacing Unit (Y/N)	Consolidation Code
Order Numbers.		Well setbacks are under Common Ownership: <input type="checkbox"/> Yes <input type="checkbox"/> No		

Kick Off Point (KOP)

UL A	Section 18	Township 19S	Range 25E	Lot	Ft. from N/S 1,193 NORTH	Ft. from E/W 602 EAST	Latitude (NAD 83) 32.665110°	Longitude (NAD 83) -104.517553°	County EDDY
---------	---------------	-----------------	--------------	-----	-----------------------------	--------------------------	---------------------------------	------------------------------------	----------------

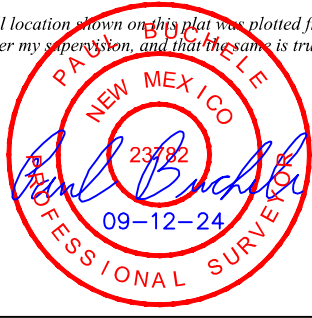
First Take Point (FTP)

UL D	Section 17	Township 19S	Range 25E	Lot	Ft. from N/S 1,252 NORTH	Ft. from E/W 100 WEST	Latitude (NAD 83) 32.664945°	Longitude (NAD 83) -104.515272°	County EDDY
---------	---------------	-----------------	--------------	-----	-----------------------------	--------------------------	---------------------------------	------------------------------------	----------------

Last Take Point (LTP)

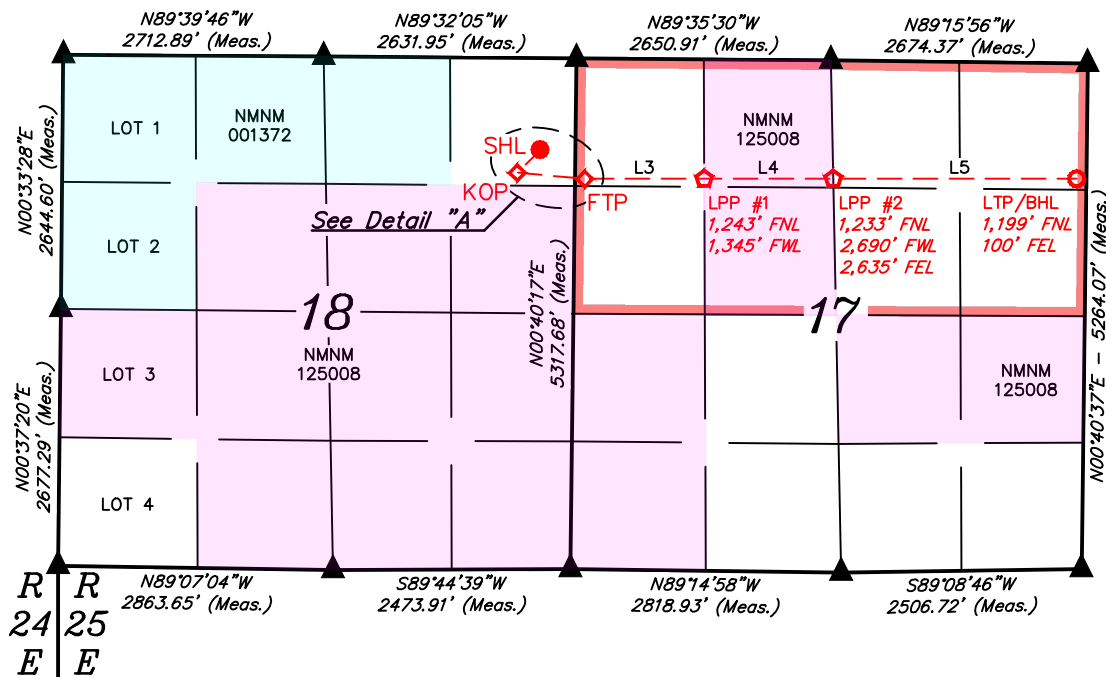
UL A	Section 17	Township 19S	Range 25E	Lot	Ft. from N/S 1,199 NORTH	Ft. from E/W 100 EAST	Latitude (NAD 83) 32.665032°	Longitude (NAD 83) -104.498621°	County EDDY
---------	---------------	-----------------	--------------	-----	-----------------------------	--------------------------	---------------------------------	------------------------------------	----------------

Unitized Area or Area of Uniform Interest	Spacing Unit Type <input type="checkbox"/> Horizontal <input type="checkbox"/> Vertical	Ground Floor Elevation:
---	---	-------------------------

OPERATOR CERTIFICATIONS <i>I hereby certify that the information contained herein is true and complete to the best of my knowledge and belief, and, if the well is a vertical or directional well, that this organization either owns a working interest or unleased mineral interest in the land including the proposed bottom hole location or has a right to drill this well at this location pursuant to a contract with an owner of a working interest or unleased mineral interest, or to a voluntary pooling agreement or a compulsory pooling order heretofore entered by the division.</i> <i>If this well is a horizontal well, I further certify that this organization has received the consent of at least one lessee or owner of a working interest or unleased mineral interest in each tract (in the target pool or formation) in which any part of the well's completed interval will be located or obtained a compulsory pooling order from the division.</i>	SURVEYOR CERTIFICATIONS <i>I hereby certify that the well location shown on this plat was plotted from the field notes of actual surveys made by me or under my supervision, and that the same is true and correct to the best of my belief.</i> 
Signature _____ Date _____	Signature and Seal of Professional Surveyor 23782 July 23, 2023
Printed Name _____	Certificate Number _____ Date of Survey _____
Email Address _____	

Note: No allowable will be assigned to this completion until all interest have been consolidated or a non-standard unit has been approved by the division.

Property Name BARBARA 17 FED COM	Well Number 206H	Drawn By T.J.S. 07-27-23	Revised By REV. 3 T.J.S. 09-11-24 (UPDATE FORMAT)
-------------------------------------	---------------------	-----------------------------	--



NAD 83 (SURFACE HOLE LOCATION)
LATITUDE = 32°39'56.62" (32.665727°)
LONGITUDE = -104°31'00.52" (-104.516811°)
NAD 27 (SURFACE HOLE LOCATION)
LATITUDE = 32°39'56.21" (32.665615°)
LONGITUDE = -104°30'58.64" (-104.516290°)
STATE PLANE NAD 83 (N.M. EAST)
N: 605971.38' E: 484876.23'
STATE PLANE NAD 27 (N.M. EAST)
N: 605910.32' E: 443697.89'

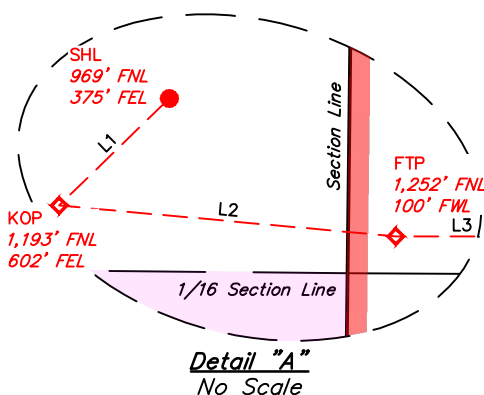
NAD 83 (KICK OFF POINT)
LATITUDE = 32°39'54.40" (32.665110°)
LONGITUDE = -104°31'03.19" (-104.517553°)
NAD 27 (KICK OFF POINT)
LATITUDE = 32°39'53.99" (32.664998°)
LONGITUDE = -104°31'01.31" (-104.517031°)
STATE PLANE NAD 83 (N.M. EAST)
N: 605747.39' E: 484647.77'
STATE PLANE NAD 27 (N.M. EAST)
N: 605686.34' E: 443469.43'

NAD 83 (FIRST TAKE POINT)
LATITUDE = 32°39'53.80" (32.664945°)
LONGITUDE = -104°30'54.98" (-104.515272°)
NAD 27 (FIRST TAKE POINT)
LATITUDE = 32°39'53.40" (32.664832°)
LONGITUDE = -104°30'53.10" (-104.514751°)
STATE PLANE NAD 83 (N.M. EAST)
N: 605685.96' E: 485349.34'
STATE PLANE NAD 27 (N.M. EAST)
N: 605624.90' E: 444171.00'

NAD 83 (LPP #1)
LATITUDE = 32°39'53.88" (32.664966°)
LONGITUDE = -104°30'40.42" (-104.511228°)
NAD 27 (LPP #1)
LATITUDE = 32°39'53.47" (32.664854°)
LONGITUDE = -104°30'38.54" (-104.510706°)
STATE PLANE NAD 83 (N.M. EAST)
N: 605691.65' E: 486594.08'
STATE PLANE NAD 27 (N.M. EAST)
N: 605630.56' E: 445415.76'

NAD 83 (LPP #2)
LATITUDE = 32°39'53.96" (32.664989°)
LONGITUDE = -104°30'24.69" (-104.506859°)
NAD 27 (LPP #2)
LATITUDE = 32°39'53.56" (32.664877°)
LONGITUDE = -104°30'22.81" (-104.506337°)
STATE PLANE NAD 83 (N.M. EAST)
N: 605697.80' E: 487938.54'
STATE PLANE NAD 27 (N.M. EAST)
N: 605636.68' E: 446760.23'

NAD 83 (LTP/BHL)
LATITUDE = 32°39'54.12" (32.665032°)
LONGITUDE = -104°29'55.04" (-104.498621°)
NAD 27 (LTP/BHL)
LATITUDE = 32°39'53.71" (32.664920°)
LONGITUDE = -104°29'53.16" (-104.498100°)
STATE PLANE NAD 83 (N.M. EAST)
N: 605709.39' E: 490473.45'
STATE PLANE NAD 27 (N.M. EAST)
N: 605648.22' E: 449295.15'



LINE TABLE		
LINE	DIRECTION	LENGTH
L1	S45°48'29"W	320.03'
L2	S84°45'11"E	704.43'
L3	N89°58'52"E	1245.09'
L4	N89°58'52"E	1344.82'
L5	N89°58'52"E	2535.60'



- = SURFACE HOLE LOCATION
- ◆ = KICK OFF/FIRST TAKE POINT
- ☆ = LEASE PENETRATION POINT
- = LAST TAKE POINT/BOTTOM HOLE LOCATION
- ▲ = SECTION CORNER LOCATED
- = HORIZONTAL SPACING UNIT

NOTE:

- Distances referenced on plat to section lines are perpendicular.
- Basis of Bearings is a Transverse Mercator Projection with a Central Meridian of W103°53'00" (NAD 83)
- Colored areas within section lines represent Federal oil & gas leases.

District I
1625 N. French Dr., Hobbs, NM 88240
Phone:(575) 393-6161 Fax:(575) 393-0720
District II
811 S. First St., Artesia, NM 88210
Phone:(575) 748-1283 Fax:(575) 748-9720
District III
1000 Rio Brazos Rd., Aztec, NM 87410
Phone:(505) 334-6178 Fax:(505) 334-6170
District IV
1220 S. St Francis Dr., Santa Fe, NM 87505
Phone:(505) 476-3470 Fax:(505) 476-3462

State of New Mexico
Energy, Minerals and Natural Resources
Oil Conservation Division
1220 S. St Francis Dr.
Santa Fe, NM 87505

CONDITIONS

Action 384346

CONDITIONS

Operator: Silverback Operating II, LLC 1001 W. Wilshire Blvd Oklahoma City, OK 73112	OGRID: 330968
	Action Number: 384346
	Action Type: [C-102] Well Location & Acreage Plat (C-102)

CONDITIONS

Created By	Condition	Condition Date
matthew.gomez	None	9/17/2024