

Well Name: RED HILLS NORTH UNIT	Well Location: T25S / R33E / SEC 13 / NENE / 32.135946 / -103.519619	County or Parish/State: LEA / NM
Well Number: 303	Type of Well: OIL WELL	Allottee or Tribe Name:
Lease Number: NMNM19623	Unit or CA Name: RED HILLS NORTH	Unit or CA Number: NMNM104037X
US Well Number: 3002532183	Operator: EOG RESOURCES INCORPORATED	

Accepted for record only BLM approval required NMOCD 9/17/24 KF

Subsequent Report

Sundry ID: 2798886

Type of Submission: Subsequent Report	Type of Action: Temporary Abandonment
Date Sundry Submitted: 09/05/2024	Time Sundry Submitted: 03:24
Date Operation Actually Began: 07/19/2024	

Actual Procedure: EOG TA'd this wellbore using the attached procedure. Final Wellbore attached along with CSG MIT Chart

SR Attachments

Actual Procedure

RHNU_303___Final_TA_20240905152417.pdf

SR Conditions of Approval

Specialist Review

TA_COA_20240905175621.pdf

Received by OCD: 9/11/2024 3:39:40 PM

Page 2 of 71

Well Name: RED HILLS NORTH UNIT	Well Location: T25S / R33E / SEC 13 / NENE / 32.135946 / -103.519619	County or Parish/State: LEA / NM
Well Number: 303	Type of Well: OIL WELL	Allottee or Tribe Name:
Lease Number: NMNM19623	Unit or CA Name: RED HILLS NORTH	Unit or CA Number: NMNM104037X
US Well Number: 3002532183	Operator: EOG RESOURCES INCORPORATED	

Operator

I certify that the foregoing is true and correct. Title 18 U.S.C. Section 1001 and Title 43 U.S.C. Section 1212, make it a crime for any person knowingly and willfully to make to any department or agency of the United States any false, fictitious or fraudulent statements or representations as to any matter within its jurisdiction. Electronic submission of Sundry Notices through this system satisfies regulations requiring a

Operator Electronic Signature: KRISTINA AGEE	Signed on: SEP 05, 2024 03:24 PM
Name: EOG RESOURCES INCORPORATED	
Title: Senior Regulatory Administrator	
Street Address: 5509 Champions Dr.	
City: Midland	State: TX
Phone: (432) 686-6996	
Email address: kristina_agee@eogresources.com	

Field

Representative Name:		
Street Address:		
City:	State:	Zip:
Phone:		
Email address:		

BLM Point of Contact

BLM POC Name: JONATHON W SHEPARD	BLM POC Title: Petroleum Engineer
BLM POC Phone: 5752345972	BLM POC Email Address: jshepard@blm.gov
Disposition: Approved	Disposition Date: 09/05/2024
Signature: Jonathon Shepard	

Form 3160-5 (June 2019)	UNITED STATES DEPARTMENT OF THE INTERIOR BUREAU OF LAND MANAGEMENT	FORM APPROVED OMB No. 1004-0137 Expires: October 31, 2021
SUNDRY NOTICES AND REPORTS ON WELLS <i>Do not use this form for proposals to drill or to re-enter an abandoned well. Use Form 3160-3 (APD) for such proposals.</i>		5. Lease Serial No.
		6. If Indian, Allottee or Tribe Name

SUBMIT IN TRIPLICATE - Other instructions on page 2		7. If Unit of CA/Agreement, Name and/or No.
1. Type of Well <input type="checkbox"/> Oil Well <input type="checkbox"/> Gas Well <input type="checkbox"/> Other		8. Well Name and No.
2. Name of Operator		9. API Well No.
3a. Address	3b. Phone No. (include area code)	10. Field and Pool or Exploratory Area
4. Location of Well (Footage, Sec., T.,R.,M., or Survey Description)		11. Country or Parish, State

12. CHECK THE APPROPRIATE BOX(ES) TO INDICATE NATURE OF NOTICE, REPORT OR OTHER DATA				
TYPE OF SUBMISSION	TYPE OF ACTION			
<input type="checkbox"/> Notice of Intent	<input type="checkbox"/> Acidize	<input type="checkbox"/> Deepen	<input type="checkbox"/> Production (Start/Resume)	<input type="checkbox"/> Water Shut-Off
<input type="checkbox"/> Subsequent Report	<input type="checkbox"/> Alter Casing	<input type="checkbox"/> Hydraulic Fracturing	<input type="checkbox"/> Reclamation	<input type="checkbox"/> Well Integrity
<input type="checkbox"/> Final Abandonment Notice	<input type="checkbox"/> Casing Repair	<input type="checkbox"/> New Construction	<input type="checkbox"/> Recomplete	<input type="checkbox"/> Other
	<input type="checkbox"/> Change Plans	<input type="checkbox"/> Plug and Abandon	<input type="checkbox"/> Temporarily Abandon	
	<input type="checkbox"/> Convert to Injection	<input type="checkbox"/> Plug Back	<input type="checkbox"/> Water Disposal	

13. Describe Proposed or Completed Operation: Clearly state all pertinent details, including estimated starting date of any proposed work and approximate duration thereof. If the proposal is to deepen directionally or recompleate horizontally, give subsurface locations and measured and true vertical depths of all pertinent markers and zones. Attach the Bond under which the work will be perfonned or provide the Bond No. on file with BLM/BIA. Required subsequent reports must be filed within 30 days following completion of the involved operations. If the operation results in a multiple completion or recompletion in a new interval, a Form 3160-4 must be filed once testing has been completed. Final Abandonment Notices must be filed only after all requirements, including reclamation, have been completed and the operator has detennined that the site is ready for final inspection.)

14. I hereby certify that the foregoing is true and correct. Name (Printed/Typed)		
	Title	
Signature	Date	

THE SPACE FOR FEDERAL OR STATE OFFICE USE		
Approved by	Title	Date
Conditions of approval, if any, are attached. Approval of this notice does not warrant or certify that the applicant holds legal or equitable title to those rights in the subject lease which would entitle the applicant to conduct operations thereon.	Office	

Title 18 U.S.C Section 1001 and Title 43 U.S.C Section 1212, make it a crime for any person knowingly and willfully to make to any department or agency of the United States any false, fictitious or fraudulent statements or representations as to any matter within its jurisdiction.

(Instructions on page 2)

GENERAL INSTRUCTIONS

This form is designed for submitting proposals to perform certain well operations and reports of such operations when completed as indicated on Federal and Indian lands pursuant to applicable Federal law and regulations. Any necessary special instructions concerning the use of this form and the number of copies to be submitted, particularly with regard to local area or regional procedures and practices, are either shown below, will be issued by or may be obtained from the local Federal office.

SPECIFIC INSTRUCTIONS

Item 4 - Locations on Federal or Indian land should be described in accordance with Federal requirements. Consult the local Federal office for specific instructions.

Item 13: Proposals to abandon a well and subsequent reports of abandonment should include such special information as is required by the local Federal office. In addition, such proposals and reports should include reasons for the abandonment; data on any former or present productive zones or other zones with present significant fluid contents not sealed off by cement or otherwise; depths (top and bottom) and method of placement of cement plugs; mud or other material placed below, between and above plugs; amount, size, method of parting of any casing, liner or tubing pulled and the depth to the top of any tubing left in the hole; method of closing top of well and date well site conditioned for final inspection looking for approval of the abandonment. If the proposal will involve **hydraulic fracturing operations**, you must comply with 43 CFR 3162.3-3, including providing information about the protection of usable water. Operators should provide the best available information about all formations containing water and their depths. This information could include data and interpretation of resistivity logs run on nearby wells. Information may also be obtained from state or tribal regulatory agencies and from local BLM offices.

NOTICES

The privacy Act of 1974 and the regulation in 43 CFR 2.48(d) provide that you be furnished the following information in connection with information required by this application.

AUTHORITY: 30 U.S.C. 181 et seq., 351 et seq., 25 U.S.C. 396; 43 CFR 3160.

PRINCIPAL PURPOSE: The information is used to: (1) Evaluate, when appropriate, approve applications, and report completion of subsequent well operations, on a Federal or Indian lease; and (2) document for administrative use, information for the management, disposal and use of National Resource lands and resources, such as: (a) evaluating the equipment and procedures to be used during a proposed subsequent well operation and reviewing the completed well operations for compliance with the approved plan; (b) requesting and granting approval to perform those actions covered by 43 CFR 3162.3-2, 3162.3-3, and 3162.3-4; (c) reporting the beginning or resumption of production, as required by 43 CFR 3162.4-1(c) and (d) analyzing future applications to drill or modify operations in light of data obtained and methods used.

ROUTINE USES: Information from the record and/or the record will be transferred to appropriate Federal, State, local or foreign agencies, when relevant to civil, criminal or regulatory investigations or prosecutions in connection with congressional inquiries or to consumer reporting agencies to facilitate collection of debts owed the Government.

EFFECT OF NOT PROVIDING THE INFORMATION: Filing of this notice and report and disclosure of the information is mandatory for those subsequent well operations specified in 43 CFR 3162.3-2, 3162.3-3, 3162.3-4.

The Paperwork Reduction Act of 1995 requires us to inform you that:

The BLM collects this information to evaluate proposed and/or completed subsequent well operations on Federal or Indian oil and gas leases.

Response to this request is mandatory.

The BLM would like you to know that you do not have to respond to this or any other Federal agency-sponsored information collection unless it displays a currently valid OMB control number.

BURDEN HOURS STATEMENT: Public reporting burden for this form is estimated to average 8 hours per response, including the time for reviewing instructions, gathering and maintaining data, and completing and reviewing the form. Direct comments regarding the burden estimate or any other aspect of this form to U.S. Department of the Interior, Bureau of Land Management (1004-0137), Bureau Information Collection Clearance Officer (WO-630), 1849 C St., N.W., Mail Stop 401 LS, Washington, D.C. 20240

Additional Information

Location of Well

0. SHL: NENE / 660 FNL / 660 FEL / TWSP: 25S / RANGE: 33E / SECTION: 13 / LAT: 32.135946 / LONG: -103.519619 (TVD: 0 feet, MD: 0 feet)

BHL: NENE / 660 FNL / 660 FEL / TWSP: 25S / SECTION: / LAT: 32.135946 / LONG: 103.519619 (TVD: 0 feet, MD: 0 feet)

BUREAU OF LAND MANAGEMENT

Carlsbad Field Office
620 East Greene Street
Carlsbad, New Mexico 88220
575-234-5972

Conditions of Approval for Temporary Abandonment of Wells

Definition: A temporarily abandoned well is a completion that is not capable of production in paying quantities, but which may have future value. Pursuant to 43 CFR 3162.3-4 (c), no well may be temporarily abandoned for more than 30 days without the prior approval of the authorized officer.

1. TA status will be effective for a period of up to one year from the date of sundry approval and can be renewed annually thereafter per IM NM-2016-017.
2. A bridge plug (CIBP) must be installed 50 to 100 feet above any open perforations/open hole/kick off point. The CIBP must be capped with either a minimum of 25 sacks of cement if placed with tubing or 35 feet of cement if placed with a bailer. The top of the cement must be verified by tagging.
3. The wellbore must be filled with corrosion inhibited fluid and pressure tested to 500 psi. The casing shall be capable of holding this pressure for at least 30 minutes. If the well does not pass the casing integrity test, then the operator shall, within 30 days, submit a procedure to either repair the casing or to plug and abandon the well.
4. Contact the appropriate BLM office at least 24 hours prior to the scheduled Casing Integrity Test. For wells in Eddy County, 575-361-2822; Lea County 575-393-3612.
5. All downhole production/injection equipment (tubing, rods, etc.) shall be removed from the casing if it is not isolated by a packer.
6. A bradenhead test must be conducted. If the test indicates a problem, a remedial plan and time frame for remediation shall be submitted within ninety (90) days of the test.
7. Submit a subsequent Sundry Notice (Form 3160-5) with the following information:
 - a. A well bore diagram with all perforations, CIBP's, and tops of cement on CIBP's.
 - b. A description of the temporary abandonment procedure.
 - c. A clear copy or the original of the pressure test chart.

RED HILLS NORTH UNIT #303**30-025-32183**WELL WORK TO TA WELL:

7/19/2024 MIRU WOR, ND WH & NU BOP, START POOH LAY DOWN RODS

7/20/2024 NO ACTIVITY

7/21/2024 NO ACTIVITY

7/22/2024 FINISH POOH LAY DOWN PUMP & RODS
RELEASE TAC & START POOH W/ TBG

7/23/2024 FINISH POOH W/ TBG
MIRU WL, RIH W/ GR & JB TO 12,200', POOH WL
RIH W/ 5.5" CIBP, SET CIBP @ 12,180', PU 25', RIH TAG CIBP, POOH WL
RIH W/ DUMP BAILER, DUMP 35' CMT ON CIBP, POOH RDMO WL

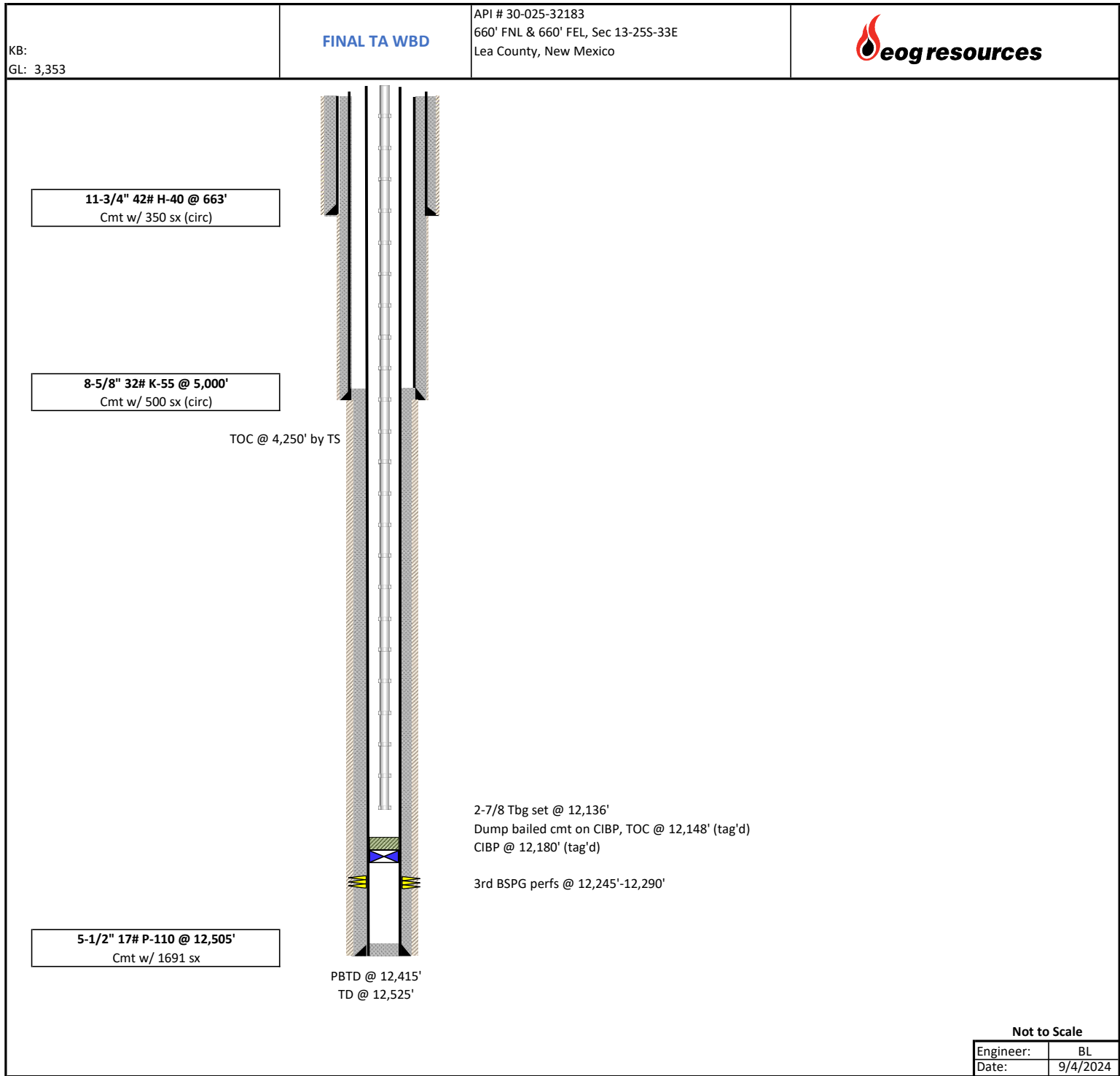
7/23/24 TIH W/ 2.875" TBG, TAG TOC @ 12,148', CIRC PKR FLUID, SET TBG @ 12,136'
ND BOP & NU WH, RDMO

7/24/24 PERFORM MIT ON 5.5" CSG, TEST FAILED
PLAN TO COME BACK WITH RIG TO INVESTIGATE POSSIBLE LEAK

8/19/2024 MIRU WOR, ND WH & NU BOP, POOH W/ TBG
TIH W/ AS1 PKR, SET PKR @ 5,130'
LOAD & TEST DOWN TBG, TESTING CSG BELOW PKR TO TOC FROM 5,130'-12,148', TEST GOOD AT 500 PSI FOR 30 MIN
LOAD & TEST DOWN CSG, TESTING CSG FROM SURFACE TO PKR FROM 0'-5,130', TEST GOOD AT 790 PSI FOR 30 MIN
NO LEAK FOUND, ALL 5.5" CSG TEST GOOD

8/20/2024 RELEASE PKR, PERFORM MIT ON 5.5" CSG, TEST GOOD TO 620 PSI – APPROVED BY HOBBS BLM STEVEN BAILEY
POOH LAY DWN PKR, TIH 2-7/8 TBG, SET EOT @ 12,136', ND BOP, NU WH, RDMO

RHNU #303





Detailed Job Breakdown



JOB REPORT

COMPANY DETAILS

Company: EOG
Contact: T.O. SIMPSON
Phone: 575-942-5211

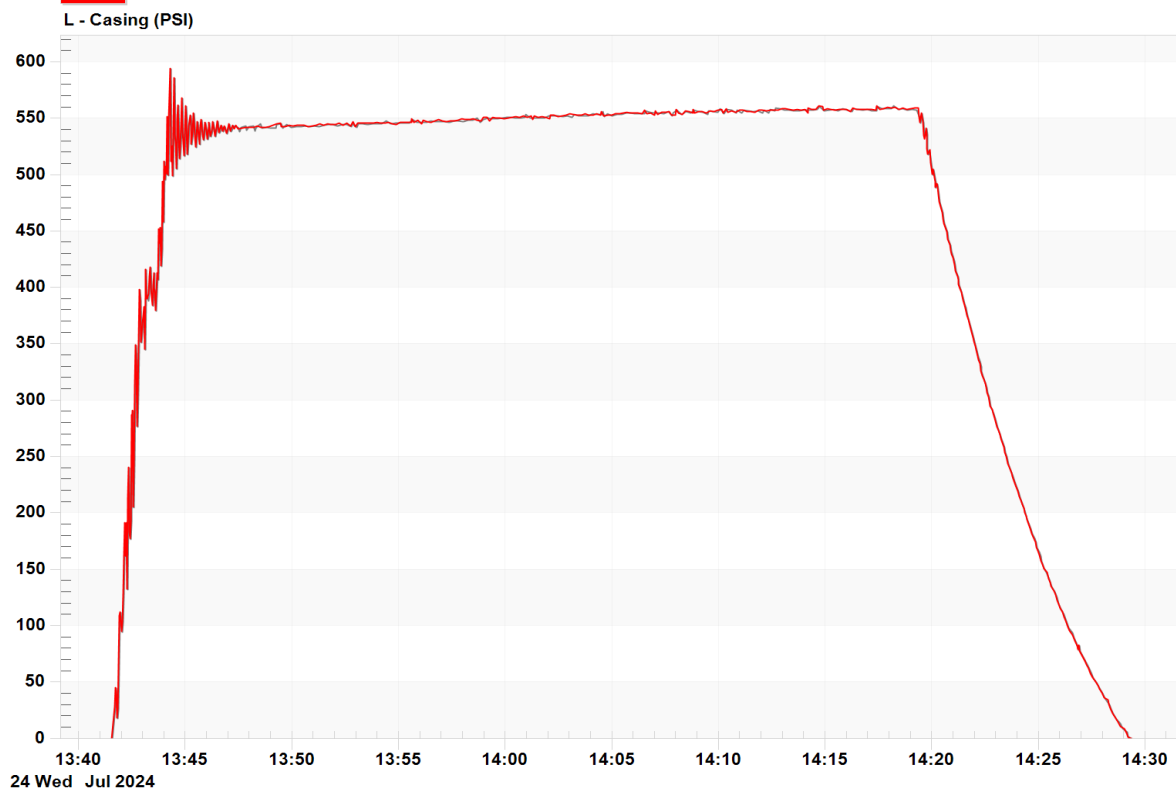
Email: TSIMPSON2@EOGRE
SOURCES.COM

JOB DETAILS

DATE 7/24/2024 1:41:31PM
START TIME 7/24/2024 1:41:31PM
END TIME 7/24/2024 2:29:26PM
Ticket#: 65847
Other:
Other:

Operator:
LSD#:
Licence #:
Contractor:
AFE:

Comments: Redhills Unit303



Casing (PSI)								
Time								
13:41	31.242	0						
13:41	32.242	0						
13:41	33.241	0						
13:41	34.241	0						
13:41	35.241	0						
13:41	36.241	0						
13:41	37.242	0						
13:41	38.242	0						
13:41	39.242	0						
13:41	40.242	1						
13:41	41.242	1						
13:41	42.242	28						
13:41	43.242	28						
13:41	44.242	45						
13:41	45.242	45						
13:41	46.242	42						
13:41	47.242	42						
13:41	48.242	18						
13:41	49.242	18						
13:41	50.242	26						
13:41	51.241	26						
13:41	52.241	66						
13:41	53.241	66						
13:41	54.241	109						
13:41	55.242	109						
13:41	56.242	112						
13:41	57.242	112						
13:41	58.242	110						
13:41	59.242	110						
13:42	0.242	95						
13:42	1.242	95						
13:42	2.242	104						
13:42	3.242	104						
13:42	4.242	102						
13:42	5.242	102						
13:42	6.242	128						
13:42	7.242	128						
13:42	8.241	162						
13:42	9.241	162						
13:42	10.241	191						
13:42	11.241	191						
13:42	12.242	162						
13:42	13.242	162						
13:42	14.242	191						
13:42	15.242	191						
13:42	16.242	132						
13:42	17.242	132						
13:42	18.242	213						

13:42:19

Detailed Job Breakdown

July/24/2024

Casing (PSI)								
Time								
13:42	19.242	213						
13:42	20.242	240						
13:42	21.242	240						
13:42	22.242	182						
13:42	23.242	182						
13:42	24.242	177						
13:42	25.242	177						
13:42	26.241	192						
13:42	27.241	192						
13:42	28.241	287						
13:42	29.241	287						
13:42	30.242	274						
13:42	31.242	274						
13:42	32.242	291						
13:42	33.242	291						
13:42	34.242	205						
13:42	35.242	205						
13:42	36.242	247						
13:42	37.242	247						
13:42	38.242	314						
13:42	39.242	314						
13:42	40.242	349						
13:42	41.242	349						
13:42	42.242	332						
13:42	43.241	332						
13:42	44.241	277						
13:42	45.241	277						
13:42	46.241	308						
13:42	47.242	308						
13:42	48.242	308						
13:42	49.242	308						
13:42	50.242	308						
13:42	51.242	398						
13:42	52.242	398						
13:42	53.242	388						
13:42	54.242	388						
13:42	55.242	352						
13:42	56.242	352						
13:42	57.242	359						
13:42	58.242	359						
13:42	59.242	369						
13:43	0.242	369						
13:43	1.241	375						
13:43	2.241	375						
13:43	3.241	383						
13:43	4.241	383						
13:43	5.242	345						
13:43	6.242	345						

13:43:07

Detailed Job Breakdown

July/24/2024

Casing (PSI)									
Time									
13:43	7.242	397							
13:43	8.242	397							
13:43	9.242	416							
13:43	10.242	416							
13:43	11.242	393							
13:43	12.242	393							
13:43	13.242	390							
13:43	14.242	390							
13:43	15.242	389							
13:43	16.242	389							
13:43	17.242	394							
13:43	18.241	394							
13:43	19.241	410							
13:43	20.241	410							
13:43	21.241	418							
13:43	22.242	418							
13:43	23.242	399							
13:43	24.242	399							
13:43	25.242	391							
13:43	26.242	391							
13:43	27.242	384							
13:43	28.242	384							
13:43	29.242	402							
13:43	30.242	402							
13:43	31.242	413							
13:43	32.242	413							
13:43	33.242	399							
13:43	34.242	399							
13:43	35.241	396							
13:43	36.241	396							
13:43	37.241	380							
13:43	38.241	380							
13:43	39.241	395							
13:43	40.242	395							
13:43	41.242	413							
13:43	42.242	413							
13:43	43.242	407							
13:43	44.242	407							
13:43	45.242	452							
13:43	46.242	452							
13:43	47.242	439							
13:43	48.242	439							
13:43	49.242	453							
13:43	50.242	453							
13:43	51.242	419							
13:43	52.242	419							
13:43	53.241	434							
13:43	54.241	434							

13:43:55

Detailed Job Breakdown

July/24/2024

Casing (PSI)								
Time								
13:43	55.241	494						
13:43	56.241	494						
13:43	57.242	458						
13:43	58.242	458						
13:43	59.242	458						
13:44	0.242	512						
13:44	1.242	512						
13:44	2.242	496						
13:44	3.242	496						
13:44	4.242	507						
13:44	5.242	507						
13:44	6.242	501						
13:44	7.242	501						
13:44	8.242	551						
13:44	9.242	551						
13:44	10.241	506						
13:44	11.241	506						
13:44	12.241	500						
13:44	13.241	500						
13:44	14.241	549						
13:44	15.242	549						
13:44	16.242	550						
13:44	17.242	550						
13:44	18.242	594						
13:44	19.242	594						
13:44	20.242	512						
13:44	21.242	512						
13:44	22.242	526						
13:44	23.242	526						
13:44	24.242	499						
13:44	25.242	499						
13:44	26.242	542						
13:44	27.242	542						
13:44	28.241	586						
13:44	29.241	586						
13:44	30.241	535						
13:44	31.241	535						
13:44	32.242	526						
13:44	33.242	526						
13:44	34.242	505						
13:44	35.242	505						
13:44	36.242	536						
13:44	37.242	536						
13:44	38.242	549						
13:44	39.242	549						
13:44	40.242	561						
13:44	41.242	561						
13:44	42.242	533						

13:44:43

Detailed Job Breakdown

July/24/2024

Casing (PSI)								
Time								
13:44	43.242	533						
13:44	44.242	515						
13:44	45.241	515						
13:44	46.241	526						
13:44	47.241	526						
13:44	48.241	544						
13:44	49.241	544						
13:44	50.242	568						
13:44	51.242	568						
13:44	52.242	538						
13:44	53.242	538						
13:44	54.242	536						
13:44	55.242	536						
13:44	56.242	517						
13:44	57.242	517						
13:44	58.242	538						
13:44	59.242	538						
13:45	0.242	561						
13:45	1.242	561						
13:45	2.242	548						
13:45	3.241	548						
13:45	4.241	542						
13:45	5.241	542						
13:45	6.241	518						
13:45	7.242	518						
13:45	8.242	529						
13:45	9.242	529						
13:45	10.242	543						
13:45	11.242	543						
13:45	12.242	543						
13:45	13.242	553						
13:45	14.242	553						
13:45	15.242	544						
13:45	16.242	544						
13:45	17.242	527						
13:45	18.242	527						
13:45	19.242	526						
13:45	20.241	526						
13:45	21.241	538						
13:45	22.241	538						
13:45	23.241	555						
13:45	24.241	555						
13:45	25.242	546						
13:45	26.242	546						
13:45	27.242	534						
13:45	28.242	534						
13:45	29.242	525						
13:45	30.242	525						

13:45:31

Detailed Job Breakdown

July/24/2024

Casing (PSI)								
Time								
13:45	31.242	534						
13:45	32.242	534						
13:45	33.242	547						
13:45	34.242	547						
13:45	35.242	548						
13:45	36.242	548						
13:45	37.242	545						
13:45	38.241	545						
13:45	39.241	527						
13:45	40.241	527						
13:45	41.241	531						
13:45	42.242	531						
13:45	43.242	544						
13:45	44.242	544						
13:45	45.242	549						
13:45	46.242	549						
13:45	47.242	546						
13:45	48.242	546						
13:45	49.242	535						
13:45	50.242	535						
13:45	51.242	531						
13:45	52.242	531						
13:45	53.242	536						
13:45	54.242	536						
13:45	55.241	546						
13:45	56.241	546						
13:45	57.241	546						
13:45	58.241	546						
13:45	59.241	539						
13:46	0.242	539						
13:46	1.242	531						
13:46	2.242	531						
13:46	3.242	534						
13:46	4.242	534						
13:46	5.242	542						
13:46	6.242	542						
13:46	7.243	546						
13:46	8.242	546						
13:46	9.242	545						
13:46	10.242	545						
13:46	11.242	534						
13:46	12.242	534						
13:46	13.241	535						
13:46	14.241	535						
13:46	15.241	539						
13:46	16.241	539						
13:46	17.242	547						
13:46	18.242	547						

13:46:19

Detailed Job Breakdown

July/24/2024

Casing (PSI)								
Time								
13:46	19.242	545						
13:46	20.242	545						
13:46	21.242	539						
13:46	22.242	539						
13:46	23.242	534						
13:46	24.242	534						
13:46	25.242	534						
13:46	26.242	535						
13:46	27.242	535						
13:46	28.242	542						
13:46	29.242	542						
13:46	30.241	547						
13:46	31.241	547						
13:46	32.241	542						
13:46	33.241	542						
13:46	34.241	537						
13:46	35.242	537						
13:46	36.242	535						
13:46	37.242	535						
13:46	38.242	540						
13:46	39.242	540						
13:46	40.242	544						
13:46	41.242	544						
13:46	42.242	545						
13:46	43.242	545						
13:46	44.242	539						
13:46	45.242	539						
13:46	46.242	536						
13:46	47.242	536						
13:46	48.241	538						
13:46	49.241	538						
13:46	50.241	543						
13:46	51.241	543						
13:46	52.242	543						
13:46	53.242	543						
13:46	54.242	540						
13:46	55.242	540						
13:46	56.242	537						
13:46	57.242	537						
13:46	58.242	538						
13:46	59.242	538						
13:47	0.242	542						
13:47	1.242	542						
13:47	2.242	545						
13:47	3.242	545						
13:47	4.242	542						
13:47	5.241	542						
13:47	6.241	539						

13:47:07

Detailed Job Breakdown

July/24/2024

Casing (PSI)									
Time									
13:47	7.241	539							
13:47	8.241	537							
13:47	9.241	537							
13:47	10.242	540							
13:47	11.242	540							
13:47	12.242	541							
13:47	13.242	541							
13:47	14.242	544							
13:47	15.242	544							
13:47	16.242	543							
13:47	17.242	543							
13:47	18.242	541							
13:47	19.242	541							
13:47	20.242	541							
13:47	21.242	541							
13:47	22.242	544							
13:47	23.241	544							
13:47	24.241	542							
13:47	25.241	542							
13:47	26.241	542							
13:47	27.242	542							
13:47	28.242	540							
13:47	29.242	540							
13:47	30.242	539							
13:47	31.242	539							
13:47	32.242	540							
13:47	33.242	540							
13:47	34.242	542							
13:47	35.242	542							
13:47	36.242	542							
13:47	37.242	542							
13:47	38.242	542							
13:47	39.242	541							
13:47	40.241	541							
13:47	41.241	539							
13:47	42.241	539							
13:47	43.241	540							
13:47	44.241	540							
13:47	45.242	542							
13:47	46.242	542							
13:47	47.242	544							
13:47	48.242	544							
13:47	49.242	542							
13:47	50.242	542							
13:47	51.242	540							
13:47	52.242	540							
13:47	53.242	541							
13:47	54.242	541							

Casing (PSI)								
Time								
13:47	55.242	542						
13:47	56.242	542						
13:47	57.242	543						
13:47	58.241	543						
13:47	59.241	542						
13:48	0.241	542						
13:48	1.241	541						
13:48	2.242	541						
13:48	3.242	540						
13:48	4.242	540						
13:48	5.242	540						
13:48	6.242	540						
13:48	7.242	543						
13:48	8.242	543						
13:48	9.242	544						
13:48	10.242	544						
13:48	11.242	542						
13:48	12.242	542						
13:48	13.242	539						
13:48	14.242	539						
13:48	15.241	540						
13:48	16.241	540						
13:48	17.241	542						
13:48	18.241	542						
13:48	19.241	543						
13:48	20.242	543						
13:48	21.242	543						
13:48	22.242	543						
13:48	23.242	541						
13:48	24.242	541						
13:48	25.242	542						
13:48	26.242	542						
13:48	27.242	542						
13:48	28.242	542						
13:48	29.242	545						
13:48	30.242	545						
13:48	31.242	544						
13:48	32.242	544						
13:48	33.241	542						
13:48	34.241	542						
13:48	35.241	542						
13:48	36.241	542						
13:48	37.242	542						
13:48	38.242	542						
13:48	39.242	543						
13:48	40.242	543						
13:48	41.242	543						
13:48	42.242	543						

13:48:43

Detailed Job Breakdown

July/24/2024

Casing (PSI)									
Time									
13:48	43.242	542							
13:48	44.242	542							
13:48	45.242	542							
13:48	46.242	542							
13:48	47.242	541							
13:48	48.242	541							
13:48	49.242	541							
13:48	50.241	542							
13:48	51.241	542							
13:48	52.241	543							
13:48	53.241	543							
13:48	54.241	542							
13:48	55.242	542							
13:48	56.242	542							
13:48	57.242	542							
13:48	58.242	542							
13:48	59.242	542							
13:49	0.242	542							
13:49	1.242	542							
13:49	2.242	542							
13:49	3.242	542							
13:49	4.242	544							
13:49	5.242	544							
13:49	6.242	542							
13:49	7.242	542							
13:49	8.241	542							
13:49	9.241	542							
13:49	10.241	542							
13:49	11.241	542							
13:49	12.242	542							
13:49	13.242	542							
13:49	14.242	545							
13:49	15.242	545							
13:49	16.242	545							
13:49	17.242	545							
13:49	18.242	543							
13:49	19.242	543							
13:49	20.242	546							
13:49	21.242	546							
13:49	22.242	545							
13:49	23.242	545							
13:49	24.242	545							
13:49	25.241	545							
13:49	26.241	545							
13:49	27.241	545							
13:49	28.241	546							
13:49	29.241	546							
13:49	30.242	542							

13:49:31

Detailed Job Breakdown

July/24/2024

Casing (PSI)									
Time									
13:49	31.242	542							
13:49	32.242	542							
13:49	33.242	542							
13:49	34.242	543							
13:49	35.242	543							
13:49	36.242	543							
13:49	37.242	543							
13:49	38.242	544							
13:49	39.242	544							
13:49	40.242	543							
13:49	41.242	543							
13:49	42.242	542							
13:49	43.241	542							
13:49	44.241	545							
13:49	45.241	545							
13:49	46.241	544							
13:49	47.242	544							
13:49	48.242	543							
13:49	49.242	543							
13:49	50.242	544							
13:49	51.242	544							
13:49	52.242	544							
13:49	53.242	544							
13:49	54.242	543							
13:49	55.242	543							
13:49	56.242	543							
13:49	57.242	543							
13:49	58.242	543							
13:49	59.242	543							
13:50	0.241	543							
13:50	1.241	543							
13:50	2.241	543							
13:50	3.241	542							
13:50	4.242	542							
13:50	5.242	543							
13:50	6.242	543							
13:50	7.242	543							
13:50	8.242	543							
13:50	9.242	543							
13:50	10.242	543							
13:50	11.242	543							
13:50	12.242	543							
13:50	13.242	544							
13:50	14.242	544							
13:50	15.242	542							
13:50	16.242	542							
13:50	17.242	544							
13:50	18.241	544							

13:50:19

Detailed Job Breakdown

July/24/2024

Casing (PSI)								
Time								
13:50	19.241	544						
13:50	20.241	544						
13:50	21.241	543						
13:50	22.242	543						
13:50	23.242	544						
13:50	24.242	544						
13:50	25.242	543						
13:50	26.242	543						
13:50	27.242	544						
13:50	28.242	544						
13:50	29.242	543						
13:50	30.242	543						
13:50	31.242	544						
13:50	32.242	544						
13:50	33.242	544						
13:50	34.242	544						
13:50	35.241	543						
13:50	36.241	543						
13:50	37.241	543						
13:50	38.241	543						
13:50	39.242	542						
13:50	40.242	542						
13:50	41.242	543						
13:50	42.242	543						
13:50	43.242	544						
13:50	44.242	544						
13:50	45.242	542						
13:50	46.242	542						
13:50	47.242	543						
13:50	48.242	543						
13:50	49.242	544						
13:50	50.242	544						
13:50	51.242	544						
13:50	52.242	544						
13:50	53.241	544						
13:50	54.241	544						
13:50	55.241	543						
13:50	56.241	543						
13:50	57.242	543						
13:50	58.242	543						
13:50	59.242	544						
13:51	0.242	544						
13:51	1.242	544						
13:51	2.242	544						
13:51	3.242	543						
13:51	4.242	543						
13:51	5.242	544						
13:51	6.242	544						

13:51:07

Detailed Job Breakdown

July/24/2024

Casing (PSI)									
Time									
13:51	7.242	544							
13:51	8.242	544							
13:51	9.242	544							
13:51	10.241	544							
13:51	11.241	544							
13:51	12.241	544							
13:51	13.241	544							
13:51	14.242	543							
13:51	15.242	543							
13:51	16.242	544							
13:51	17.242	544							
13:51	18.242	545							
13:51	19.242	545							
13:51	20.242	544							
13:51	21.242	544							
13:51	22.242	544							
13:51	23.242	544							
13:51	24.242	545							
13:51	25.242	545							
13:51	26.242	544							
13:51	27.242	544							
13:51	28.241	544							
13:51	29.241	544							
13:51	30.241	544							
13:51	31.241	544							
13:51	32.242	545							
13:51	33.242	545							
13:51	34.242	545							
13:51	35.242	545							
13:51	36.242	544							
13:51	37.242	544							
13:51	38.242	544							
13:51	39.242	544							
13:51	40.242	545							
13:51	41.242	545							
13:51	42.242	544							
13:51	43.242	544							
13:51	44.242	545							
13:51	45.241	545							
13:51	46.241	545							
13:51	47.241	545							
13:51	48.241	545							
13:51	49.242	545							
13:51	50.242	544							
13:51	51.242	544							
13:51	52.242	545							
13:51	53.242	545							
13:51	54.242	545							

Casing (PSI)								
Time								
13:51	55.242	545						
13:51	56.242	546						
13:51	57.242	546						
13:51	58.242	546						
13:51	59.242	546						
13:52	0.242	544						
13:52	1.242	544						
13:52	2.241	545						
13:52	3.241	545						
13:52	4.241	546						
13:52	5.241	546						
13:52	6.241	544						
13:52	7.242	544						
13:52	8.242	545						
13:52	9.242	545						
13:52	10.242	543						
13:52	11.242	543						
13:52	12.242	545						
13:52	13.242	545						
13:52	14.242	544						
13:52	15.242	544						
13:52	16.242	545						
13:52	17.242	545						
13:52	18.242	545						
13:52	19.242	545						
13:52	20.241	545						
13:52	21.241	544						
13:52	22.241	544						
13:52	23.241	544						
13:52	24.242	544						
13:52	25.242	545						
13:52	26.242	545						
13:52	27.242	546						
13:52	28.242	546						
13:52	29.242	545						
13:52	30.242	545						
13:52	31.242	545						
13:52	32.242	545						
13:52	33.242	546						
13:52	34.242	546						
13:52	35.242	544						
13:52	36.242	544						
13:52	37.241	545						
13:52	38.241	545						
13:52	39.241	544						
13:52	40.241	544						
13:52	41.241	544						
13:52	42.242	544						

13:52:43

Detailed Job Breakdown

July/24/2024

Casing (PSI)								
Time								
13:52	43.242	544						
13:52	44.242	544						
13:52	45.242	543						
13:52	46.242	543						
13:52	47.242	546						
13:52	48.242	546						
13:52	49.242	544						
13:52	50.242	544						
13:52	51.242	547						
13:52	52.242	547						
13:52	53.242	546						
13:52	54.242	546						
13:52	55.241	547						
13:52	56.241	547						
13:52	57.241	545						
13:52	58.241	545						
13:52	59.242	542						
13:53	0.242	542						
13:53	1.242	543						
13:53	2.242	543						
13:53	3.242	544						
13:53	4.242	544						
13:53	5.242	546						
13:53	6.242	546						
13:53	7.242	544						
13:53	8.242	544						
13:53	9.242	546						
13:53	10.242	546						
13:53	11.242	545						
13:53	12.241	545						
13:53	13.241	545						
13:53	14.241	545						
13:53	15.241	545						
13:53	16.241	545						
13:53	17.242	546						
13:53	18.242	546						
13:53	19.242	547						
13:53	20.242	547						
13:53	21.242	545						
13:53	22.242	545						
13:53	23.242	545						
13:53	24.242	545						
13:53	25.242	546						
13:53	26.242	546						
13:53	27.242	546						
13:53	28.242	546						
13:53	29.242	545						
13:53	30.241	545						

Casing (PSI)								
Time								
13:53	31.241	546						
13:53	32.241	546						
13:53	33.241	546						
13:53	34.242	545						
13:53	35.242	545						
13:53	36.242	545						
13:53	37.242	545						
13:53	38.242	545						
13:53	39.242	545						
13:53	40.242	546						
13:53	41.242	546						
13:53	42.242	546						
13:53	43.242	546						
13:53	44.242	546						
13:53	45.242	546						
13:53	46.242	545						
13:53	47.241	545						
13:53	48.241	546						
13:53	49.241	546						
13:53	50.241	546						
13:53	51.241	546						
13:53	52.242	546						
13:53	53.242	546						
13:53	54.242	545						
13:53	55.242	545						
13:53	56.242	545						
13:53	57.242	545						
13:53	58.242	546						
13:53	59.242	546						
13:54	0.242	545						
13:54	1.242	545						
13:54	2.242	545						
13:54	3.242	545						
13:54	4.242	546						
13:54	5.241	546						
13:54	6.241	544						
13:54	7.241	544						
13:54	8.241	546						
13:54	9.242	546						
13:54	10.242	545						
13:54	11.242	545						
13:54	12.242	547						
13:54	13.242	547						
13:54	14.242	546						
13:54	15.242	546						
13:54	16.242	546						
13:54	17.242	546						
13:54	18.242	546						

13:54:19

Detailed Job Breakdown

July/24/2024

Casing (PSI)								
Time								
13:54	19.242	546						
13:54	20.242	546						
13:54	21.242	546						
13:54	22.241	548						
13:54	23.241	548						
13:54	24.241	546						
13:54	25.241	546						
13:54	26.241	545						
13:54	27.242	545						
13:54	28.242	546						
13:54	29.242	546						
13:54	30.242	546						
13:54	31.242	546						
13:54	32.242	546						
13:54	33.242	546						
13:54	34.242	545						
13:54	35.242	545						
13:54	36.242	546						
13:54	37.242	546						
13:54	38.242	547						
13:54	39.242	547						
13:54	40.241	547						
13:54	41.241	547						
13:54	42.241	545						
13:54	43.241	545						
13:54	44.242	546						
13:54	45.242	546						
13:54	46.242	546						
13:54	47.242	546						
13:54	48.242	546						
13:54	49.242	546						
13:54	50.242	546						
13:54	51.242	545						
13:54	52.242	545						
13:54	53.242	544						
13:54	54.242	544						
13:54	55.242	547						
13:54	56.242	547						
13:54	57.241	546						
13:54	58.241	546						
13:54	59.241	546						
13:55	0.241	546						
13:55	1.241	547						
13:55	2.242	547						
13:55	3.242	547						
13:55	4.242	547						
13:55	5.242	546						
13:55	6.242	546						

13:55:07

Detailed Job Breakdown

July/24/2024

Casing (PSI)									
Time									
13:55	7.242	546							
13:55	8.242	546							
13:55	9.242	546							
13:55	10.242	546							
13:55	11.242	544							
13:55	12.242	544							
13:55	13.242	546							
13:55	14.242	546							
13:55	15.241	546							
13:55	16.241	546							
13:55	17.241	547							
13:55	18.241	547							
13:55	19.242	547							
13:55	20.242	547							
13:55	21.242	546							
13:55	22.242	546							
13:55	23.242	545							
13:55	24.242	545							
13:55	25.242	546							
13:55	26.242	546							
13:55	27.242	546							
13:55	28.242	546							
13:55	29.242	545							
13:55	30.242	545							
13:55	31.242	546							
13:55	32.241	546							
13:55	33.241	546							
13:55	34.241	546							
13:55	35.241	546							
13:55	36.241	546							
13:55	37.242	550							
13:55	38.242	550							
13:55	39.242	550							
13:55	40.242	550							
13:55	41.242	549							
13:55	42.242	549							
13:55	43.242	546							
13:55	44.242	546							
13:55	45.242	546							
13:55	46.242	546							
13:55	47.242	547							
13:55	48.242	547							
13:55	49.242	547							
13:55	50.241	547							
13:55	51.241	547							
13:55	52.241	547							
13:55	53.241	548							
13:55	54.242	548							

13:55:55

Detailed Job Breakdown

July/24/2024

Casing (PSI)								
Time								
13:55	55.242	546						
13:55	56.242	546						
13:55	57.242	546						
13:55	58.242	546						
13:55	59.242	546						
13:56	0.242	546						
13:56	1.242	546						
13:56	2.242	547						
13:56	3.242	547						
13:56	4.242	545						
13:56	5.242	545						
13:56	6.242	547						
13:56	7.241	547						
13:56	8.241	547						
13:56	9.241	547						
13:56	10.241	548						
13:56	11.241	548						
13:56	12.242	549						
13:56	13.242	549						
13:56	14.242	547						
13:56	15.242	547						
13:56	16.242	546						
13:56	17.242	546						
13:56	18.242	547						
13:56	19.242	547						
13:56	20.242	548						
13:56	21.242	548						
13:56	22.242	549						
13:56	23.242	549						
13:56	24.242	547						
13:56	25.241	547						
13:56	26.241	547						
13:56	27.241	547						
13:56	28.241	548						
13:56	29.242	548						
13:56	30.242	546						
13:56	31.242	546						
13:56	32.242	546						
13:56	33.242	546						
13:56	34.242	546						
13:56	35.242	546						
13:56	36.242	545						
13:56	37.242	545						
13:56	38.242	547						
13:56	39.242	547						
13:56	40.242	547						
13:56	41.242	547						
13:56	42.241	547						

Casing (PSI)								
Time								
13:56	43.241	547						
13:56	44.241	545						
13:56	45.241	545						
13:56	46.241	547						
13:56	47.242	547						
13:56	48.242	547						
13:56	49.242	547						
13:56	50.242	545						
13:56	51.242	545						
13:56	52.242	549						
13:56	53.242	549						
13:56	54.242	547						
13:56	55.242	547						
13:56	56.242	548						
13:56	57.242	548						
13:56	58.242	547						
13:56	59.242	547						
13:57	0.241	549						
13:57	1.241	549						
13:57	2.241	548						
13:57	3.241	548						
13:57	4.242	548						
13:57	5.242	548						
13:57	6.242	547						
13:57	7.242	547						
13:57	8.242	547						
13:57	9.242	547						
13:57	10.242	547						
13:57	11.242	547						
13:57	12.242	548						
13:57	13.242	549						
13:57	14.242	547						
13:57	15.242	548						
13:57	16.242	549						
13:57	17.241	548						
13:57	18.241	547						
13:57	19.241	547						
13:57	20.241	547						
13:57	21.241	548						
13:57	22.242	547						
13:57	23.242	547						
13:57	24.242	548						
13:57	25.242	548						
13:57	26.242	548						
13:57	27.242	548						
13:57	28.242	549						
13:57	29.242	548						
13:57	30.242	547						

13:57:31

Detailed Job Breakdown

July/24/2024

Casing (PSI)								
Time								
13:57	31.242	548						
13:57	32.242	548						
13:57	33.242	548						
13:57	34.242	548						
13:57	35.241	548						
13:57	36.241	549						
13:57	37.241	549						
13:57	38.241	548						
13:57	39.242	550						
13:57	40.242	549						
13:57	41.242	549						
13:57	42.242	548						
13:57	43.242	549						
13:57	44.242	548						
13:57	45.242	549						
13:57	46.242	548						
13:57	47.242	548						
13:57	48.242	548						
13:57	49.242	547						
13:57	50.242	548						
13:57	51.242	549						
13:57	52.241	549						
13:57	53.241	548						
13:57	54.241	549						
13:57	55.241	548						
13:57	56.241	548						
13:57	57.242	550						
13:57	58.242	549						
13:57	59.242	547						
13:58	0.242	549						
13:58	1.242	548						
13:58	2.242	549						
13:58	3.242	548						
13:58	4.242	547						
13:58	5.242	549						
13:58	6.242	547						
13:58	7.242	549						
13:58	8.242	549						
13:58	9.242	548						
13:58	10.241	549						
13:58	11.241	549						
13:58	12.241	549						
13:58	13.241	549						
13:58	14.242	550						
13:58	15.242	549						
13:58	16.242	549						
13:58	17.242	548						
13:58	18.242	549						

13:58:19

Detailed Job Breakdown

July/24/2024

Casing (PSI)								
Time								
13:58	19.242	549						
13:58	20.242	548						
13:58	21.242	548						
13:58	22.242	548						
13:58	23.242	549						
13:58	24.242	549						
13:58	25.242	549						
13:58	26.242	549						
13:58	27.241	549						
13:58	28.241	549						
13:58	29.241	549						
13:58	30.241	549						
13:58	31.241	549						
13:58	32.242	549						
13:58	33.242	550						
13:58	34.242	549						
13:58	35.242	549						
13:58	36.242	550						
13:58	37.242	549						
13:58	38.242	551						
13:58	39.242	549						
13:58	40.242	548						
13:58	41.242	550						
13:58	42.242	550						
13:58	43.242	550						
13:58	44.242	548						
13:58	45.241	549						
13:58	46.241	549						
13:58	47.241	549						
13:58	48.241	547						
13:58	49.242	547						
13:58	50.242	547						
13:58	51.242	548						
13:58	52.242	548						
13:58	53.242	548						
13:58	54.242	548						
13:58	55.242	547						
13:58	56.242	549						
13:58	57.242	549						
13:58	58.242	549						
13:58	59.242	550						
13:59	0.242	550						
13:59	1.242	548						
13:59	2.241	548						
13:59	3.241	550						
13:59	4.241	549						
13:59	5.241	550						
13:59	6.242	550						

13:59:07

Detailed Job Breakdown

July/24/2024

Casing (PSI)									
Time									
13:59	7.242	549							
13:59	8.242	548							
13:59	9.242	550							
13:59	10.242	550							
13:59	11.242	550							
13:59	12.242	549							
13:59	13.242	549							
13:59	14.242	550							
13:59	15.242	547							
13:59	16.242	548							
13:59	17.242	548							
13:59	18.242	549							
13:59	19.242	550							
13:59	20.241	550							
13:59	21.241	550							
13:59	22.241	550							
13:59	23.241	550							
13:59	24.242	551							
13:59	25.242	549							
13:59	26.242	549							
13:59	27.242	550							
13:59	28.242	549							
13:59	29.242	550							
13:59	30.242	548							
13:59	31.242	549							
13:59	32.242	550							
13:59	33.242	550							
13:59	34.242	550							
13:59	35.242	550							
13:59	36.242	549							
13:59	37.241	550							
13:59	38.241	550							
13:59	39.241	549							
13:59	40.241	549							
13:59	41.242	548							
13:59	42.242	549							
13:59	43.242	547							
13:59	44.242	548							
13:59	45.242	549							
13:59	46.242	550							
13:59	47.242	550							
13:59	48.242	550							
13:59	49.242	550							
13:59	50.242	550							
13:59	51.242	550							
13:59	52.242	550							
13:59	53.242	549							
13:59	54.242	551							

13:59:55

Detailed Job Breakdown

July/24/2024

Casing (PSI)								
Time								
13:59	55.241	552						
13:59	56.241	550						
13:59	57.241	550						
13:59	58.241	551						
13:59	59.242	550						
14:00	0.242	549						
14:00	1.242	551						
14:00	2.242	551						
14:00	3.242	550						
14:00	4.242	551						
14:00	5.242	550						
14:00	6.242	551						
14:00	7.242	550						
14:00	8.242	551						
14:00	9.242	550						
14:00	10.242	550						
14:00	11.242	550						
14:00	12.241	550						
14:00	13.241	551						
14:00	14.241	552						
14:00	15.241	551						
14:00	16.242	552						
14:00	17.242	551						
14:00	18.242	551						
14:00	19.242	550						
14:00	20.242	551						
14:00	21.242	552						
14:00	22.242	550						
14:00	23.242	550						
14:00	24.242	551						
14:00	25.242	550						
14:00	26.242	551						
14:00	27.242	550						
14:00	28.242	551						
14:00	29.242	552						
14:00	30.241	550						
14:00	31.241	550						
14:00	32.241	552						
14:00	33.241	551						
14:00	34.242	550						
14:00	35.242	551						
14:00	36.242	552						
14:00	37.242	552						
14:00	38.242	551						
14:00	39.242	551						
14:00	40.242	551						
14:00	41.242	550						
14:00	42.242	551						

14:00:43

Detailed Job Breakdown

July/24/2024

Casing (PSI)								
Time								
14:00	43.242	551						
14:00	44.242	551						
14:00	45.242	551						
14:00	46.242	551						
14:00	47.241	552						
14:00	48.241	552						
14:00	49.241	551						
14:00	50.241	551						
14:00	51.242	552						
14:00	52.242	552						
14:00	53.242	552						
14:00	54.242	553						
14:00	55.242	554						
14:00	56.242	554						
14:00	57.242	553						
14:00	58.242	554						
14:00	59.242	553						
14:01	0.242	553						
14:01	1.242	553						
14:01	2.242	551						
14:01	3.242	551						
14:01	4.241	552						
14:01	5.241	551						
14:01	6.241	551						
14:01	7.241	553						
14:01	8.241	551						
14:01	9.242	551						
14:01	10.242	551						
14:01	11.242	553						
14:01	12.242	552						
14:01	13.242	550						
14:01	14.242	551						
14:01	15.242	552						
14:01	16.242	550						
14:01	17.242	549						
14:01	18.242	550						
14:01	19.242	550						
14:01	20.242	550						
14:01	21.242	551						
14:01	22.241	552						
14:01	23.241	551						
14:01	24.241	550						
14:01	25.241	552						
14:01	26.242	551						
14:01	27.242	553						
14:01	28.242	552						
14:01	29.242	551						
14:01	30.242	551						

Casing (PSI)								
Time								
14:01	31.242	552						
14:01	32.242	551						
14:01	33.242	553						
14:01	34.242	551						
14:01	35.242	552						
14:01	36.242	550						
14:01	37.242	552						
14:01	38.242	552						
14:01	39.241	552						
14:01	40.241	550						
14:01	41.241	551						
14:01	42.241	551						
14:01	43.241	551						
14:01	44.242	551						
14:01	45.242	552						
14:01	46.242	550						
14:01	47.242	551						
14:01	48.242	552						
14:01	49.242	551						
14:01	50.242	552						
14:01	51.242	552						
14:01	52.242	551						
14:01	53.242	551						
14:01	54.242	551						
14:01	55.242	551						
14:01	56.242	552						
14:01	57.241	551						
14:01	58.241	551						
14:01	59.241	552						
14:02	0.241	553						
14:02	1.242	553						
14:02	2.242	553						
14:02	3.242	550						
14:02	4.242	550						
14:02	5.242	550						
14:02	6.242	550						
14:02	7.242	551						
14:02	8.242	553						
14:02	9.242	553						
14:02	10.242	553						
14:02	11.242	551						
14:02	12.242	553						
14:02	13.242	553						
14:02	14.241	551						
14:02	15.241	552						
14:02	16.241	553						
14:02	17.241	553						
14:02	18.241	553						

Casing (PSI)								
Time								
14:02	19.242	553						
14:02	20.242	553						
14:02	21.242	552						
14:02	22.242	552						
14:02	23.242	553						
14:02	24.242	553						
14:02	25.242	552						
14:02	26.242	553						
14:02	27.242	552						
14:02	28.242	552						
14:02	29.242	552						
14:02	30.242	553						
14:02	31.242	551						
14:02	32.241	553						
14:02	33.241	553						
14:02	34.241	553						
14:02	35.241	553						
14:02	36.242	552						
14:02	37.242	553						
14:02	38.242	554						
14:02	39.242	552						
14:02	40.242	553						
14:02	41.242	553						
14:02	42.242	552						
14:02	43.242	553						
14:02	44.242	553						
14:02	45.242	552						
14:02	46.242	552						
14:02	47.242	552						
14:02	48.242	552						
14:02	49.241	551						
14:02	50.241	553						
14:02	51.241	553						
14:02	52.241	553						
14:02	53.241	552						
14:02	54.242	553						
14:02	55.242	553						
14:02	56.242	552						
14:02	57.242	553						
14:02	58.242	551						
14:02	59.242	553						
14:03	0.242	552						
14:03	1.242	554						
14:03	2.242	553						
14:03	3.242	553						
14:03	4.242	553						
14:03	5.242	552						
14:03	6.242	553						

14:03:07

Detailed Job Breakdown

July/24/2024

Casing (PSI)									
Time									
14:03	7.241	553							
14:03	8.241	553							
14:03	9.241	553							
14:03	10.241	553							
14:03	11.242	553							
14:03	12.242	553							
14:03	13.242	554							
14:03	14.242	554							
14:03	15.242	553							
14:03	16.242	553							
14:03	17.242	553							
14:03	18.242	553							
14:03	19.242	553							
14:03	20.242	551							
14:03	21.242	553							
14:03	22.242	553							
14:03	23.242	553							
14:03	24.241	553							
14:03	25.241	553							
14:03	26.241	553							
14:03	27.241	553							
14:03	28.241	554							
14:03	29.242	553							
14:03	30.242	553							
14:03	31.242	553							
14:03	32.242	553							
14:03	33.242	553							
14:03	34.242	553							
14:03	35.242	552							
14:03	36.242	553							
14:03	37.242	553							
14:03	38.242	553							
14:03	39.242	554							
14:03	40.242	554							
14:03	41.242	553							
14:03	42.241	552							
14:03	43.241	555							
14:03	44.241	554							
14:03	45.241	554							
14:03	46.242	553							
14:03	47.242	553							
14:03	48.242	553							
14:03	49.242	553							
14:03	50.242	554							
14:03	51.242	553							
14:03	52.242	553							
14:03	53.242	553							
14:03	54.242	553							

14:03:55

Detailed Job Breakdown

July/24/2024

Casing (PSI)								
Time								
14:03	55.242	553						
14:03	56.242	553						
14:03	57.242	553						
14:03	58.242	554						
14:03	59.241	554						
14:04	0.241	552						
14:04	1.241	553						
14:04	2.241	553						
14:04	3.241	553						
14:04	4.242	555						
14:04	5.242	554						
14:04	6.242	553						
14:04	7.242	553						
14:04	8.242	554						
14:04	9.242	554						
14:04	10.242	552						
14:04	11.242	553						
14:04	12.242	555						
14:04	13.242	553						
14:04	14.242	555						
14:04	15.242	553						
14:04	16.242	554						
14:04	17.241	554						
14:04	18.241	555						
14:04	19.241	553						
14:04	20.241	554						
14:04	21.242	554						
14:04	22.242	553						
14:04	23.242	554						
14:04	24.242	554						
14:04	25.242	553						
14:04	26.242	553						
14:04	27.242	554						
14:04	28.242	553						
14:04	29.242	554						
14:04	30.242	554						
14:04	31.242	556						
14:04	32.242	556						
14:04	33.242	557						
14:04	34.241	555						
14:04	35.241	555						
14:04	36.241	552						
14:04	37.241	553						
14:04	38.241	553						
14:04	39.242	553						
14:04	40.242	553						
14:04	41.242	553						
14:04	42.242	554						

14:04:43

Detailed Job Breakdown

July/24/2024

Casing (PSI)								
Time								
14:04	43.242	552						
14:04	44.242	553						
14:04	45.242	553						
14:04	46.242	555						
14:04	47.242	553						
14:04	48.242	553						
14:04	49.242	553						
14:04	50.242	553						
14:04	51.242	553						
14:04	52.241	553						
14:04	53.241	553						
14:04	54.241	553						
14:04	55.241	554						
14:04	56.242	554						
14:04	57.242	554						
14:04	58.242	553						
14:04	59.242	554						
14:05	0.242	554						
14:05	1.242	552						
14:05	2.242	554						
14:05	3.242	553						
14:05	4.242	554						
14:05	5.242	553						
14:05	6.242	554						
14:05	7.242	555						
14:05	8.242	553						
14:05	9.241	554						
14:05	10.241	553						
14:05	11.241	554						
14:05	12.241	555						
14:05	13.241	553						
14:05	14.242	553						
14:05	15.242	554						
14:05	16.242	553						
14:05	17.242	554						
14:05	18.242	555						
14:05	19.242	555						
14:05	20.242	554						
14:05	21.242	553						
14:05	22.242	555						
14:05	23.242	554						
14:05	24.242	554						
14:05	25.242	555						
14:05	26.242	555						
14:05	27.241	554						
14:05	28.241	554						
14:05	29.241	555						
14:05	30.241	554						

Casing (PSI)								
Time								
14:05	31.242	555						
14:05	32.242	554						
14:05	33.242	555						
14:05	34.242	554						
14:05	35.242	554						
14:05	36.242	555						
14:05	37.242	555						
14:05	38.242	555						
14:05	39.242	554						
14:05	40.242	554						
14:05	41.242	555						
14:05	42.242	555						
14:05	43.242	554						
14:05	44.241	553						
14:05	45.241	554						
14:05	46.241	555						
14:05	47.241	554						
14:05	48.241	555						
14:05	49.242	554						
14:05	50.242	555						
14:05	51.242	554						
14:05	52.242	554						
14:05	53.242	555						
14:05	54.242	554						
14:05	55.242	555						
14:05	56.242	555						
14:05	57.242	555						
14:05	58.242	555						
14:05	59.242	555						
14:06	0.242	553						
14:06	1.242	554						
14:06	2.241	555						
14:06	3.241	554						
14:06	4.241	555						
14:06	5.241	554						
14:06	6.242	555						
14:06	7.242	553						
14:06	8.242	555						
14:06	9.242	555						
14:06	10.242	554						
14:06	11.242	555						
14:06	12.242	555						
14:06	13.242	554						
14:06	14.242	555						
14:06	15.242	553						
14:06	16.242	554						
14:06	17.242	555						
14:06	18.242	554						

Casing (PSI)								
Time								
14:06	19.241	554						
14:06	20.241	554						
14:06	21.241	555						
14:06	22.241	555						
14:06	23.241	554						
14:06	24.242	553						
14:06	25.242	554						
14:06	26.242	555						
14:06	27.242	554						
14:06	28.242	555						
14:06	29.242	555						
14:06	30.242	555						
14:06	31.242	554						
14:06	32.242	555						
14:06	33.242	557						
14:06	34.242	556						
14:06	35.242	556						
14:06	36.242	555						
14:06	37.241	555						
14:06	38.241	554						
14:06	39.241	554						
14:06	40.241	554						
14:06	41.242	554						
14:06	42.242	556						
14:06	43.242	555						
14:06	44.242	556						
14:06	45.242	556						
14:06	46.242	556						
14:06	47.242	555						
14:06	48.242	555						
14:06	49.242	555						
14:06	50.242	555						
14:06	51.242	554						
14:06	52.242	555						
14:06	53.242	555						
14:06	54.241	555						
14:06	55.241	555						
14:06	56.241	554						
14:06	57.241	555						
14:06	58.241	554						
14:06	59.242	553						
14:07	0.242	553						
14:07	1.242	553						
14:07	2.242	555						
14:07	3.242	556						
14:07	4.242	555						
14:07	5.242	555						
14:07	6.242	554						

Casing (PSI)									
Time									
14:07	7.242	556							
14:07	8.242	553							
14:07	9.242	556							
14:07	10.242	556							
14:07	11.242	555							
14:07	12.241	554							
14:07	13.241	553							
14:07	14.241	555							
14:07	15.241	555							
14:07	16.242	555							
14:07	17.242	555							
14:07	18.242	555							
14:07	19.242	555							
14:07	20.242	554							
14:07	21.242	555							
14:07	22.242	556							
14:07	23.242	555							
14:07	24.242	554							
14:07	25.242	555							
14:07	26.242	556							
14:07	27.242	555							
14:07	28.242	555							
14:07	29.241	554							
14:07	30.241	556							
14:07	31.241	555							
14:07	32.241	556							
14:07	33.241	555							
14:07	34.242	556							
14:07	35.242	556							
14:07	36.242	556							
14:07	37.242	555							
14:07	38.242	555							
14:07	39.242	555							
14:07	40.242	556							
14:07	41.242	556							
14:07	42.242	554							
14:07	43.242	555							
14:07	44.242	555							
14:07	45.242	555							
14:07	46.242	554							
14:07	47.241	554							
14:07	48.241	553							
14:07	49.241	554							
14:07	50.241	554							
14:07	51.242	555							
14:07	52.242	555							
14:07	53.242	555							
14:07	54.242	555							

14:07:55

Detailed Job Breakdown

July/24/2024

Casing (PSI)								
Time								
14:07	55.242	555						
14:07	56.242	553						
14:07	57.242	553						
14:07	58.242	553						
14:07	59.242	554						
14:08	0.242	555						
14:08	1.242	558						
14:08	2.242	558						
14:08	3.242	556						
14:08	4.241	557						
14:08	5.241	556						
14:08	6.241	557						
14:08	7.241	555						
14:08	8.242	554						
14:08	9.242	555						
14:08	10.242	555						
14:08	11.242	555						
14:08	12.242	555						
14:08	13.242	554						
14:08	14.242	555						
14:08	15.242	552						
14:08	16.242	554						
14:08	17.242	553						
14:08	18.242	553						
14:08	19.242	552						
14:08	20.242	553						
14:08	21.242	556						
14:08	22.241	553						
14:08	23.241	554						
14:08	24.241	553						
14:08	25.241	556						
14:08	26.242	557						
14:08	27.242	556						
14:08	28.242	555						
14:08	29.242	555						
14:08	30.242	556						
14:08	31.242	555						
14:08	32.242	556						
14:08	33.242	555						
14:08	34.242	555						
14:08	35.242	555						
14:08	36.242	556						
14:08	37.242	556						
14:08	38.242	554						
14:08	39.241	556						
14:08	40.241	556						
14:08	41.241	556						
14:08	42.241	555						

Casing (PSI)								
Time								
14:08	43.242	557						
14:08	44.242	556						
14:08	45.242	555						
14:08	46.242	557						
14:08	47.242	554						
14:08	48.242	555						
14:08	49.242	558						
14:08	50.242	555						
14:08	51.242	555						
14:08	52.242	556						
14:08	53.242	555						
14:08	54.242	555						
14:08	55.242	555						
14:08	56.242	555						
14:08	57.241	556						
14:08	58.241	555						
14:08	59.241	557						
14:09	0.241	555						
14:09	1.242	556						
14:09	2.242	556						
14:09	3.242	556						
14:09	4.242	556						
14:09	5.242	556						
14:09	6.242	556						
14:09	7.242	556						
14:09	8.242	555						
14:09	9.242	556						
14:09	10.242	557						
14:09	11.242	556						
14:09	12.242	556						
14:09	13.242	556						
14:09	14.241	556						
14:09	15.241	556						
14:09	16.241	556						
14:09	17.241	554						
14:09	18.242	557						
14:09	19.242	557						
14:09	20.242	555						
14:09	21.242	556						
14:09	22.242	554						
14:09	23.242	556						
14:09	24.242	554						
14:09	25.242	555						
14:09	26.242	554						
14:09	27.242	554						
14:09	28.242	556						
14:09	29.242	557						
14:09	30.242	556						

Casing (PSI)								
Time								
14:09	31.242	557						
14:09	32.241	556						
14:09	33.241	557						
14:09	34.241	556						
14:09	35.241	557						
14:09	36.242	557						
14:09	37.242	556						
14:09	38.242	556						
14:09	39.242	557						
14:09	40.242	556						
14:09	41.242	557						
14:09	42.242	557						
14:09	43.242	555						
14:09	44.242	557						
14:09	45.242	556						
14:09	46.242	556						
14:09	47.242	556						
14:09	48.242	556						
14:09	49.241	556						
14:09	50.241	557						
14:09	51.241	557						
14:09	52.241	557						
14:09	53.242	555						
14:09	54.242	556						
14:09	55.242	556						
14:09	56.242	558						
14:09	57.242	557						
14:09	58.242	555						
14:09	59.242	555						
14:10	0.242	556						
14:10	1.242	556						
14:10	2.242	559						
14:10	3.242	556						
14:10	4.242	559						
14:10	5.242	558						
14:10	6.241	558						
14:10	7.241	558						
14:10	8.241	558						
14:10	9.241	558						
14:10	10.241	559						
14:10	11.242	558						
14:10	12.242	557						
14:10	13.242	556						
14:10	14.242	555						
14:10	15.242	557						
14:10	16.242	556						
14:10	17.242	556						
14:10	18.242	556						

Casing (PSI)								
Time								
14:10	19.242	555						
14:10	20.242	555						
14:10	21.242	556						
14:10	22.242	558						
14:10	23.242	556						
14:10	24.241	557						
14:10	25.241	556						
14:10	26.241	556						
14:10	27.241	557						
14:10	28.242	557						
14:10	29.242	557						
14:10	30.242	556						
14:10	31.242	557						
14:10	32.242	557						
14:10	33.242	556						
14:10	34.242	558						
14:10	35.242	556						
14:10	36.242	557						
14:10	37.242	557						
14:10	38.242	557						
14:10	39.242	556						
14:10	40.242	557						
14:10	41.241	557						
14:10	42.241	556						
14:10	43.241	556						
14:10	44.241	557						
14:10	45.241	557						
14:10	46.242	556						
14:10	47.242	555						
14:10	48.242	557						
14:10	49.242	556						
14:10	50.242	558						
14:10	51.242	556						
14:10	52.242	557						
14:10	53.242	556						
14:10	54.242	556						
14:10	55.242	557						
14:10	56.242	557						
14:10	57.242	557						
14:10	58.242	557						
14:10	59.241	556						
14:11	0.241	557						
14:11	1.241	557						
14:11	2.241	556						
14:11	3.242	555						
14:11	4.242	556						
14:11	5.242	557						
14:11	6.242	556						

14:11:07

Detailed Job Breakdown

July/24/2024

Casing (PSI)									
Time									
14:11	7.242	557							
14:11	8.242	557							
14:11	9.242	557							
14:11	10.242	558							
14:11	11.242	557							
14:11	12.242	556							
14:11	13.242	557							
14:11	14.242	558							
14:11	15.242	557							
14:11	16.241	556							
14:11	17.241	557							
14:11	18.241	556							
14:11	19.241	557							
14:11	20.241	556							
14:11	21.242	558							
14:11	22.242	557							
14:11	23.242	556							
14:11	24.242	557							
14:11	25.242	557							
14:11	26.242	557							
14:11	27.242	556							
14:11	28.242	557							
14:11	29.242	557							
14:11	30.242	555							
14:11	31.242	556							
14:11	32.242	556							
14:11	33.242	556							
14:11	34.241	557							
14:11	35.241	556							
14:11	36.241	556							
14:11	37.241	556							
14:11	38.242	557							
14:11	39.242	556							
14:11	40.242	556							
14:11	41.242	557							
14:11	42.242	555							
14:11	43.242	555							
14:11	44.242	557							
14:11	45.242	557							
14:11	46.242	557							
14:11	47.242	556							
14:11	48.242	557							
14:11	49.242	558							
14:11	50.242	557							
14:11	51.241	557							
14:11	52.241	557							
14:11	53.241	556							
14:11	54.241	558							

14:11:55

Detailed Job Breakdown

July/24/2024

Casing (PSI)								
Time								
14:11	55.241	557						
14:11	56.242	557						
14:11	57.242	555						
14:11	58.242	557						
14:11	59.242	557						
14:12	0.242	556						
14:12	1.242	556						
14:12	2.242	557						
14:12	3.242	557						
14:12	4.242	556						
14:12	5.242	556						
14:12	6.242	556						
14:12	7.242	558						
14:12	8.242	557						
14:12	9.241	556						
14:12	10.241	557						
14:12	11.241	558						
14:12	12.241	557						
14:12	13.242	557						
14:12	14.242	556						
14:12	15.242	557						
14:12	16.242	556						
14:12	17.242	557						
14:12	18.242	557						
14:12	19.242	555						
14:12	20.242	557						
14:12	21.242	557						
14:12	22.242	557						
14:12	23.242	556						
14:12	24.242	558						
14:12	25.242	557						
14:12	26.241	558						
14:12	27.241	556						
14:12	28.241	557						
14:12	29.241	557						
14:12	30.241	558						
14:12	31.242	558						
14:12	32.242	558						
14:12	33.242	557						
14:12	34.242	558						
14:12	35.242	558						
14:12	36.242	557						
14:12	37.242	558						
14:12	38.242	560						
14:12	39.242	557						
14:12	40.242	558						
14:12	41.242	558						
14:12	42.242	558						

14:12:43

Detailed Job Breakdown

July/24/2024

Casing (PSI)								
Time								
14:12	43.242	558						
14:12	44.241	559						
14:12	45.241	558						
14:12	46.241	558						
14:12	47.241	557						
14:12	48.242	558						
14:12	49.242	558						
14:12	50.242	557						
14:12	51.242	559						
14:12	52.242	558						
14:12	53.242	558						
14:12	54.242	557						
14:12	55.242	558						
14:12	56.242	557						
14:12	57.242	557						
14:12	58.242	558						
14:12	59.242	558						
14:13	0.242	558						
14:13	1.241	558						
14:13	2.241	559						
14:13	3.241	558						
14:13	4.241	558						
14:13	5.241	558						
14:13	6.242	558						
14:13	7.242	559						
14:13	8.242	558						
14:13	9.242	558						
14:13	10.242	558						
14:13	11.242	557						
14:13	12.242	557						
14:13	13.242	557						
14:13	14.242	557						
14:13	15.242	558						
14:13	16.242	556						
14:13	17.242	558						
14:13	18.242	558						
14:13	19.241	558						
14:13	20.241	558						
14:13	21.241	557						
14:13	22.241	558						
14:13	23.242	558						
14:13	24.242	558						
14:13	25.242	558						
14:13	26.242	558						
14:13	27.242	558						
14:13	28.242	558						
14:13	29.242	557						
14:13	30.242	557						

14:13:31

Detailed Job Breakdown

July/24/2024

Casing (PSI)								
Time								
14:13	31.242	557						
14:13	32.242	558						
14:13	33.242	557						
14:13	34.242	559						
14:13	35.242	557						
14:13	36.241	558						
14:13	37.241	557						
14:13	38.241	558						
14:13	39.241	557						
14:13	40.241	558						
14:13	41.242	558						
14:13	42.242	557						
14:13	43.242	557						
14:13	44.242	558						
14:13	45.242	557						
14:13	46.242	558						
14:13	47.242	558						
14:13	48.242	558						
14:13	49.242	558						
14:13	50.242	557						
14:13	51.242	557						
14:13	52.242	557						
14:13	53.242	557						
14:13	54.241	557						
14:13	55.241	557						
14:13	56.241	558						
14:13	57.241	558						
14:13	58.242	557						
14:13	59.242	558						
14:14	0.242	558						
14:14	1.242	557						
14:14	2.242	557						
14:14	3.242	558						
14:14	4.242	558						
14:14	5.242	558						
14:14	6.242	558						
14:14	7.242	558						
14:14	8.242	557						
14:14	9.242	558						
14:14	10.242	556						
14:14	11.241	554						
14:14	12.241	556						
14:14	13.241	559						
14:14	14.241	557						
14:14	15.241	557						
14:14	16.242	557						
14:14	17.242	558						
14:14	18.242	558						

14:14:19

Detailed Job Breakdown

July/24/2024

Casing (PSI)								
Time								
14:14	19.242	558						
14:14	20.242	558						
14:14	21.242	559						
14:14	22.242	558						
14:14	23.242	557						
14:14	24.242	557						
14:14	25.242	557						
14:14	26.242	558						
14:14	27.242	559						
14:14	28.242	557						
14:14	29.241	557						
14:14	30.241	558						
14:14	31.241	556						
14:14	32.241	558						
14:14	33.242	558						
14:14	34.242	558						
14:14	35.242	559						
14:14	36.242	558						
14:14	37.242	557						
14:14	38.242	558						
14:14	39.242	558						
14:14	40.242	558						
14:14	41.242	559						
14:14	42.242	559						
14:14	43.242	561						
14:14	44.242	559						
14:14	45.242	559						
14:14	46.241	561						
14:14	47.241	561						
14:14	48.241	560						
14:14	49.241	559						
14:14	50.241	561						
14:14	51.242	560						
14:14	52.242	561						
14:14	53.242	561						
14:14	54.242	558						
14:14	55.242	557						
14:14	56.242	559						
14:14	57.242	557						
14:14	58.242	557						
14:14	59.242	558						
14:15	0.242	558						
14:15	1.242	557						
14:15	2.242	559						
14:15	3.242	558						
14:15	4.241	559						
14:15	5.241	559						
14:15	6.241	558						

14:15:07

Detailed Job Breakdown

July/24/2024

Casing (PSI)									
Time									
14:15	7.241	558							
14:15	8.242	558							
14:15	9.242	559							
14:15	10.242	558							
14:15	11.242	558							
14:15	12.242	559							
14:15	13.242	557							
14:15	14.242	558							
14:15	15.242	557							
14:15	16.242	558							
14:15	17.242	558							
14:15	18.242	558							
14:15	19.242	557							
14:15	20.242	558							
14:15	21.241	558							
14:15	22.241	559							
14:15	23.241	558							
14:15	24.241	557							
14:15	25.241	557							
14:15	26.242	558							
14:15	27.242	557							
14:15	28.242	558							
14:15	29.242	558							
14:15	30.242	558							
14:15	31.242	558							
14:15	32.242	557							
14:15	33.242	558							
14:15	34.242	557							
14:15	35.242	557							
14:15	36.242	557							
14:15	37.242	558							
14:15	38.242	558							
14:15	39.241	558							
14:15	40.241	559							
14:15	41.241	558							
14:15	42.241	557							
14:15	43.242	558							
14:15	44.242	558							
14:15	45.242	558							
14:15	46.242	558							
14:15	47.242	559							
14:15	48.242	559							
14:15	49.242	558							
14:15	50.242	558							
14:15	51.242	557							
14:15	52.242	558							
14:15	53.242	558							
14:15	54.242	558							

14:15:55

Detailed Job Breakdown

July/24/2024

Casing (PSI)								
Time								
14:15	55.242	557						
14:15	56.241	558						
14:15	57.241	558						
14:15	58.241	557						
14:15	59.241	558						
14:16	0.241	558						
14:16	1.242	558						
14:16	2.242	558						
14:16	3.242	558						
14:16	4.242	558						
14:16	5.242	558						
14:16	6.242	557						
14:16	7.242	559						
14:16	8.242	558						
14:16	9.242	558						
14:16	10.242	558						
14:16	11.242	556						
14:16	12.242	557						
14:16	13.242	556						
14:16	14.241	557						
14:16	15.241	557						
14:16	16.241	556						
14:16	17.241	559						
14:16	18.242	558						
14:16	19.242	559						
14:16	20.242	559						
14:16	21.242	558						
14:16	22.242	558						
14:16	23.242	558						
14:16	24.242	558						
14:16	25.242	560						
14:16	26.242	558						
14:16	27.242	558						
14:16	28.242	558						
14:16	29.242	559						
14:16	30.242	559						
14:16	31.241	558						
14:16	32.241	558						
14:16	33.241	559						
14:16	34.241	557						
14:16	35.242	558						
14:16	36.242	559						
14:16	37.242	558						
14:16	38.242	559						
14:16	39.242	558						
14:16	40.242	559						
14:16	41.242	558						
14:16	42.242	559						

14:16:43

Detailed Job Breakdown

July/24/2024

Casing (PSI)								
Time								
14:16	43.242	558						
14:16	44.242	558						
14:16	45.242	558						
14:16	46.242	558						
14:16	47.242	559						
14:16	48.242	557						
14:16	49.241	558						
14:16	50.241	558						
14:16	51.241	559						
14:16	52.241	559						
14:16	53.242	559						
14:16	54.242	558						
14:16	55.242	558						
14:16	56.242	558						
14:16	57.242	558						
14:16	58.242	558						
14:16	59.242	558						
14:17	0.242	558						
14:17	1.242	558						
14:17	2.242	558						
14:17	3.242	561						
14:17	4.242	559						
14:17	5.242	559						
14:17	6.241	558						
14:17	7.241	557						
14:17	8.241	557						
14:17	9.241	557						
14:17	10.242	557						
14:17	11.242	558						
14:17	12.242	557						
14:17	13.242	558						
14:17	14.242	557						
14:17	15.242	557						
14:17	16.242	559						
14:17	17.242	559						
14:17	18.242	558						
14:17	19.242	559						
14:17	20.242	559						
14:17	21.242	558						
14:17	22.242	557						
14:17	23.242	558						
14:17	24.241	561						
14:17	25.241	561						
14:17	26.241	559						
14:17	27.241	559						
14:17	28.242	559						
14:17	29.242	559						
14:17	30.242	559						

14:17:31

Detailed Job Breakdown

July/24/2024

Casing (PSI)								
Time								
14:17	31.242	559						
14:17	32.242	559						
14:17	33.242	558						
14:17	34.242	558						
14:17	35.242	559						
14:17	36.242	559						
14:17	37.242	559						
14:17	38.242	559						
14:17	39.242	559						
14:17	40.242	559						
14:17	41.241	558						
14:17	42.241	558						
14:17	43.241	558						
14:17	44.241	558						
14:17	45.242	558						
14:17	46.242	558						
14:17	47.242	558						
14:17	48.242	558						
14:17	49.242	559						
14:17	50.242	559						
14:17	51.242	559						
14:17	52.242	559						
14:17	53.242	559						
14:17	54.242	559						
14:17	55.242	560						
14:17	56.242	560						
14:17	57.242	558						
14:17	58.242	558						
14:17	59.241	558						
14:18	0.241	558						
14:18	1.241	559						
14:18	2.241	559						
14:18	3.242	559						
14:18	4.242	559						
14:18	5.242	559						
14:18	6.242	559						
14:18	7.242	559						
14:18	8.242	559						
14:18	9.242	559						
14:18	10.242	561						
14:18	11.242	561						
14:18	12.242	561						
14:18	13.242	561						
14:18	14.242	559						
14:18	15.242	559						
14:18	16.241	560						
14:18	17.241	560						
14:18	18.241	559						

14:18:19

Detailed Job Breakdown

July/24/2024

Casing (PSI)								
Time								
14:18	19.241	559						
14:18	20.242	558						
14:18	21.242	558						
14:18	22.242	558						
14:18	23.242	558						
14:18	24.242	559						
14:18	25.242	559						
14:18	26.242	558						
14:18	27.242	558						
14:18	28.242	560						
14:18	29.242	560						
14:18	30.242	558						
14:18	31.242	558						
14:18	32.242	559						
14:18	33.241	559						
14:18	34.241	560						
14:18	35.241	560						
14:18	36.241	559						
14:18	37.241	559						
14:18	38.242	559						
14:18	39.242	559						
14:18	40.242	560						
14:18	41.242	560						
14:18	42.242	560						
14:18	43.242	560						
14:18	44.242	559						
14:18	45.242	559						
14:18	46.242	558						
14:18	47.242	558						
14:18	48.242	558						
14:18	49.242	558						
14:18	50.242	559						
14:18	51.241	559						
14:18	52.241	559						
14:18	53.241	559						
14:18	54.241	560						
14:18	55.242	560						
14:18	56.242	559						
14:18	57.242	559						
14:18	58.242	559						
14:18	59.242	559						
14:19	0.242	558						
14:19	1.242	558						
14:19	2.242	559						
14:19	3.242	559						
14:19	4.242	558						
14:19	5.242	558						
14:19	6.242	559						

14:19:07

Detailed Job Breakdown

July/24/2024

Casing (PSI)								
Time								
14:19	7.242	559						
14:19	8.241	558						
14:19	9.241	558						
14:19	10.241	559						
14:19	11.241	559						
14:19	12.241	558						
14:19	13.242	558						
14:19	14.242	558						
14:19	15.242	558						
14:19	16.242	558						
14:19	17.242	558						
14:19	18.242	558						
14:19	19.242	559						
14:19	20.242	559						
14:19	21.242	559						
14:19	22.242	559						
14:19	23.242	559						
14:19	24.242	559						
14:19	25.242	551						
14:19	26.241	551						
14:19	27.241	546						
14:19	28.241	546						
14:19	29.241	546						
14:19	30.242	546						
14:19	31.242	555						
14:19	32.242	555						
14:19	33.242	556						
14:19	34.242	556						
14:19	35.242	546						
14:19	36.242	546						
14:19	37.242	535						
14:19	38.242	535						
14:19	39.242	532						
14:19	40.242	532						
14:19	41.242	535						
14:19	42.242	535						
14:19	43.241	541						
14:19	44.241	541						
14:19	45.241	536						
14:19	46.241	536						
14:19	47.241	523						
14:19	48.242	523						
14:19	49.242	518						
14:19	50.242	518						
14:19	51.242	518						
14:19	52.242	518						
14:19	53.242	520						
14:19	54.242	520						

14:19:55

Detailed Job Breakdown

July/24/2024

Casing (PSI)								
Time								
14:19	55.242	522						
14:19	56.242	522						
14:19	57.242	511						
14:19	58.242	511						
14:19	59.242	505						
14:20	0.242	505						
14:20	1.241	501						
14:20	2.241	501						
14:20	3.241	505						
14:20	4.241	505						
14:20	5.242	505						
14:20	6.242	505						
14:20	7.242	502						
14:20	8.242	502						
14:20	9.242	493						
14:20	10.242	493						
14:20	11.242	489						
14:20	12.242	489						
14:20	13.242	490						
14:20	14.242	490						
14:20	15.242	492						
14:20	16.242	492						
14:20	17.242	489						
14:20	18.241	489						
14:20	19.241	482						
14:20	20.241	482						
14:20	21.241	476						
14:20	22.241	476						
14:20	23.242	474						
14:20	24.242	474						
14:20	25.242	478						
14:20	26.242	478						
14:20	27.242	474						
14:20	28.242	474						
14:20	29.242	474						
14:20	30.242	466						
14:20	31.242	466						
14:20	32.242	461						
14:20	33.242	461						
14:20	34.242	457						
14:20	35.242	457						
14:20	36.241	457						
14:20	37.241	457						
14:20	38.241	458						
14:20	39.241	458						
14:20	40.242	455						
14:20	41.242	455						
14:20	42.242	450						

Casing (PSI)								
Time								
14:20	43.242	450						
14:20	44.242	443						
14:20	45.242	443						
14:20	46.242	443						
14:20	47.242	443						
14:20	48.242	442						
14:20	49.242	442						
14:20	50.242	443						
14:20	51.242	443						
14:20	52.242	438						
14:20	53.241	438						
14:20	54.241	433						
14:20	55.241	433						
14:20	56.241	429						
14:20	57.241	429						
14:20	58.242	428						
14:20	59.242	428						
14:21	0.242	426						
14:21	1.242	426						
14:21	2.242	424						
14:21	3.242	424						
14:21	4.242	420						
14:21	5.242	420						
14:21	6.242	415						
14:21	7.242	415						
14:21	8.242	414						
14:21	9.242	414						
14:21	10.242	413						
14:21	11.241	413						
14:21	12.241	410						
14:21	13.241	410						
14:21	14.241	406						
14:21	15.242	406						
14:21	16.242	402						
14:21	17.242	402						
14:21	18.242	400						
14:21	19.242	400						
14:21	20.242	399						
14:21	21.242	399						
14:21	22.242	398						
14:21	23.242	398						
14:21	24.242	395						
14:21	25.242	395						
14:21	26.242	392						
14:21	27.242	392						
14:21	28.241	389						
14:21	29.241	389						
14:21	30.241	386						

Casing (PSI)								
Time								
14:21	31.241	386						
14:21	32.241	384						
14:21	33.242	384						
14:21	34.242	382						
14:21	35.242	382						
14:21	36.242	378						
14:21	37.242	378						
14:21	38.242	375						
14:21	39.242	375						
14:21	40.242	373						
14:21	41.242	373						
14:21	42.242	373						
14:21	43.242	371						
14:21	44.242	371						
14:21	45.242	370						
14:21	46.241	370						
14:21	47.241	366						
14:21	48.241	366						
14:21	49.241	363						
14:21	50.242	363						
14:21	51.242	360						
14:21	52.242	360						
14:21	53.242	358						
14:21	54.242	358						
14:21	55.242	358						
14:21	56.242	358						
14:21	57.242	355						
14:21	58.242	355						
14:21	59.242	352						
14:22	0.242	352						
14:22	1.242	350						
14:22	2.242	350						
14:22	3.241	348						
14:22	4.241	348						
14:22	5.241	345						
14:22	6.241	345						
14:22	7.241	343						
14:22	8.242	343						
14:22	9.242	339						
14:22	10.242	339						
14:22	11.242	336						
14:22	12.242	336						
14:22	13.242	335						
14:22	14.242	335						
14:22	15.242	332						
14:22	16.242	332						
14:22	17.242	330						
14:22	18.242	330						

14:22:19

Detailed Job Breakdown

July/24/2024

Casing (PSI)								
Time								
14:22	19.242	326						
14:22	20.242	326						
14:22	21.241	324						
14:22	22.241	324						
14:22	23.241	322						
14:22	24.241	322						
14:22	25.242	320						
14:22	26.242	320						
14:22	27.242	318						
14:22	28.242	318						
14:22	29.242	316						
14:22	30.242	316						
14:22	31.242	314						
14:22	32.242	314						
14:22	33.242	312						
14:22	34.242	312						
14:22	35.242	307						
14:22	36.242	307						
14:22	37.242	304						
14:22	38.241	304						
14:22	39.241	303						
14:22	40.241	303						
14:22	41.241	299						
14:22	42.241	299						
14:22	43.242	296						
14:22	44.242	296						
14:22	45.242	295						
14:22	46.242	295						
14:22	47.242	295						
14:22	48.242	295						
14:22	49.242	294						
14:22	50.242	294						
14:22	51.242	291						
14:22	52.242	291						
14:22	53.242	288						
14:22	54.242	288						
14:22	55.242	288						
14:22	56.241	287						
14:22	57.241	287						
14:22	58.241	284						
14:22	59.241	284						
14:23	0.242	282						
14:23	1.242	282						
14:23	2.242	282						
14:23	3.242	282						
14:23	4.242	276						
14:23	5.242	276						
14:23	6.242	276						

14:23:07

Detailed Job Breakdown

July/24/2024

Casing (PSI)									
Time									
14:23	7.242	276							
14:23	8.242	273							
14:23	9.242	273							
14:23	10.242	271							
14:23	11.242	271							
14:23	12.242	269							
14:23	13.241	269							
14:23	14.241	266							
14:23	15.242	266							
14:23	16.241	265							
14:23	17.241	265							
14:23	18.242	262							
14:23	19.242	262							
14:23	20.242	260							
14:23	21.242	260							
14:23	22.242	258							
14:23	23.242	258							
14:23	24.242	256							
14:23	25.242	256							
14:23	26.242	254							
14:23	27.242	254							
14:23	28.242	252							
14:23	29.242	252							
14:23	30.242	250							
14:23	31.241	250							
14:23	32.241	248							
14:23	33.241	248							
14:23	34.241	243							
14:23	35.242	243							
14:23	36.242	242							
14:23	37.242	242							
14:23	38.242	241							
14:23	39.242	241							
14:23	40.242	238							
14:23	41.242	238							
14:23	42.242	238							
14:23	43.242	238							
14:23	44.242	236							
14:23	45.242	236							
14:23	46.242	233							
14:23	47.242	233							
14:23	48.241	232							
14:23	49.241	232							
14:23	50.241	231							
14:23	51.241	231							
14:23	52.241	228							
14:23	53.242	228							
14:23	54.242	227							

14:23:55

Detailed Job Breakdown

July/24/2024

Casing (PSI)								
Time								
14:23	55.242	227						
14:23	56.242	224						
14:23	57.242	224						
14:23	58.242	223						
14:23	59.242	223						
14:24	0.242	222						
14:24	1.242	222						
14:24	2.242	220						
14:24	3.242	220						
14:24	4.242	217						
14:24	5.242	217						
14:24	6.241	217						
14:24	7.241	214						
14:24	8.241	214						
14:24	9.241	212						
14:24	10.242	212						
14:24	11.242	211						
14:24	12.242	211						
14:24	13.242	209						
14:24	14.242	209						
14:24	15.242	207						
14:24	16.242	207						
14:24	17.242	205						
14:24	18.242	205						
14:24	19.242	204						
14:24	20.242	204						
14:24	21.242	200						
14:24	22.242	200						
14:24	23.241	199						
14:24	24.241	199						
14:24	25.241	197						
14:24	26.241	197						
14:24	27.241	195						
14:24	28.242	195						
14:24	29.242	194						
14:24	30.242	194						
14:24	31.242	192						
14:24	32.242	192						
14:24	33.242	190						
14:24	34.242	190						
14:24	35.242	189						
14:24	36.242	189						
14:24	37.242	186						
14:24	38.242	186						
14:24	39.242	184						
14:24	40.242	184						
14:24	41.241	182						
14:24	42.241	182						

14:24:43

Detailed Job Breakdown

July/24/2024

Casing (PSI)								
Time								
14:24	43.241	181						
14:24	44.241	181						
14:24	45.242	179						
14:24	46.242	179						
14:24	47.242	178						
14:24	48.242	178						
14:24	49.242	177						
14:24	50.242	177						
14:24	51.242	174						
14:24	52.242	174						
14:24	53.242	172						
14:24	54.242	172						
14:24	55.242	170						
14:24	56.242	170						
14:24	57.242	168						
14:24	58.241	168						
14:24	59.241	166						
14:25	0.241	166						
14:25	1.241	165						
14:25	2.241	165						
14:25	3.242	163						
14:25	4.242	163						
14:25	5.242	162						
14:25	6.242	162						
14:25	7.242	158						
14:25	8.242	158						
14:25	9.242	158						
14:25	10.242	158						
14:25	11.242	154						
14:25	12.242	154						
14:25	13.242	152						
14:25	14.242	152						
14:25	15.242	151						
14:25	16.241	151						
14:25	17.241	148						
14:25	18.241	148						
14:25	19.241	148						
14:25	20.242	148						
14:25	21.242	148						
14:25	22.242	148						
14:25	23.242	148						
14:25	24.242	147						
14:25	25.242	147						
14:25	26.242	145						
14:25	27.242	145						
14:25	28.242	142						
14:25	29.242	142						
14:25	30.242	141						

14:25:31

Detailed Job Breakdown

July/24/2024

Casing (PSI)								
Time								
14:25	31.242	141						
14:25	32.242	139						
14:25	33.241	139						
14:25	34.241	138						
14:25	35.241	138						
14:25	36.241	135						
14:25	37.242	135						
14:25	38.242	136						
14:25	39.242	136						
14:25	40.242	133						
14:25	41.242	133						
14:25	42.242	132						
14:25	43.242	132						
14:25	44.242	131						
14:25	45.242	131						
14:25	46.242	128						
14:25	47.242	128						
14:25	48.242	127						
14:25	49.242	127						
14:25	50.242	125						
14:25	51.241	125						
14:25	52.241	122						
14:25	53.241	122						
14:25	54.241	123						
14:25	55.242	123						
14:25	56.242	119						
14:25	57.242	119						
14:25	58.242	119						
14:25	59.242	119						
14:26	0.242	117						
14:26	1.242	117						
14:26	2.242	115						
14:26	3.242	115						
14:26	4.242	114						
14:26	5.242	114						
14:26	6.242	114						
14:26	7.242	114						
14:26	8.241	112						
14:26	9.241	112						
14:26	10.241	110						
14:26	11.241	110						
14:26	12.242	108						
14:26	13.242	108						
14:26	14.242	107						
14:26	15.242	107						
14:26	16.242	105						
14:26	17.242	105						
14:26	18.242	104						

14:26:19

Detailed Job Breakdown

July/24/2024

Casing (PSI)								
Time								
14:26	19.242	104						
14:26	20.242	105						
14:26	21.242	105						
14:26	22.242	102						
14:26	23.242	102						
14:26	24.242	99						
14:26	25.242	99						
14:26	26.241	98						
14:26	27.241	98						
14:26	28.241	96						
14:26	29.241	96						
14:26	30.242	96						
14:26	31.242	96						
14:26	32.242	96						
14:26	33.242	94						
14:26	34.242	94						
14:26	35.242	93						
14:26	36.242	93						
14:26	37.242	92						
14:26	38.242	92						
14:26	39.242	89						
14:26	40.242	89						
14:26	41.242	89						
14:26	42.242	89						
14:26	43.241	87						
14:26	44.241	87						
14:26	45.241	85						
14:26	46.241	85						
14:26	47.242	84						
14:26	48.242	84						
14:26	49.242	82						
14:26	50.242	82						
14:26	51.242	79						
14:26	52.242	79						
14:26	53.242	82						
14:26	54.242	82						
14:26	55.242	77						
14:26	56.242	77						
14:26	57.242	79						
14:26	58.242	79						
14:26	59.242	77						
14:27	0.242	77						
14:27	1.241	75						
14:27	2.241	75						
14:27	3.241	74						
14:27	4.241	74						
14:27	5.242	74						
14:27	6.242	74						

14:27:07

Detailed Job Breakdown

July/24/2024

Casing (PSI)								
Time								
14:27	7.242	71						
14:27	8.242	71						
14:27	9.242	71						
14:27	10.242	71						
14:27	11.242	68						
14:27	12.242	68						
14:27	13.242	68						
14:27	14.242	68						
14:27	15.242	66						
14:27	16.242	66						
14:27	17.242	65						
14:27	18.241	65						
14:27	19.241	64						
14:27	20.241	64						
14:27	21.241	62						
14:27	22.242	62						
14:27	23.242	62						
14:27	24.242	62						
14:27	25.242	59						
14:27	26.242	59						
14:27	27.242	58						
14:27	28.242	58						
14:27	29.242	57						
14:27	30.242	57						
14:27	31.242	56						
14:27	32.242	56						
14:27	33.242	54						
14:27	34.242	54						
14:27	35.241	53						
14:27	36.241	53						
14:27	37.241	54						
14:27	38.241	54						
14:27	39.241	52						
14:27	40.242	52						
14:27	41.242	50						
14:27	42.242	50						
14:27	43.242	50						
14:27	44.242	49						
14:27	45.242	49						
14:27	46.242	48						
14:27	47.242	48						
14:27	48.242	47						
14:27	49.242	47						
14:27	50.242	45						
14:27	51.242	45						
14:27	52.242	43						
14:27	53.241	43						
14:27	54.241	44						

14:27:55

Detailed Job Breakdown

July/24/2024

Casing (PSI)								
Time								
14:27	55.241	44						
14:27	56.241	43						
14:27	57.242	43						
14:27	58.242	41						
14:27	59.242	41						
14:28	0.242	39						
14:28	1.242	39						
14:28	2.242	39						
14:28	3.242	39						
14:28	4.242	38						
14:28	5.242	38						
14:28	6.242	36						
14:28	7.242	36						
14:28	8.242	38						
14:28	9.242	38						
14:28	10.241	36						
14:28	11.241	36						
14:28	12.241	34						
14:28	13.241	34						
14:28	14.241	34						
14:28	15.242	34						
14:28	16.242	34						
14:28	17.242	34						
14:28	18.242	30						
14:28	19.242	30						
14:28	20.242	28						
14:28	21.242	28						
14:28	22.242	27						
14:28	23.242	27						
14:28	24.242	27						
14:28	25.242	27						
14:28	26.242	28						
14:28	27.242	28						
14:28	28.241	27						
14:28	29.241	27						
14:28	30.241	22						
14:28	31.241	22						
14:28	32.242	22						
14:28	33.242	22						
14:28	34.242	21						
14:28	35.242	21						
14:28	36.242	19						
14:28	37.242	19						
14:28	38.242	18						
14:28	39.242	18						
14:28	40.242	17						
14:28	41.242	17						
14:28	42.242	16						

14:28:43

Detailed Job Breakdown

July/24/2024

Casing (PSI)								
Time								
14:28	43.242	16						
14:28	44.242	14						
14:28	45.241	14						
14:28	46.241	15						
14:28	47.241	15						
14:28	48.241	14						
14:28	49.241	14						
14:28	50.242	11						
14:28	51.242	11						
14:28	52.242	11						
14:28	53.242	11						
14:28	54.242	9						
14:28	55.242	9						
14:28	56.242	9						
14:28	57.242	10						
14:28	58.242	10						
14:28	59.242	10						
14:29	0.242	10						
14:29	1.242	9						
14:29	2.242	9						
14:29	3.241	7						
14:29	4.241	7						
14:29	5.241	7						
14:29	6.241	7						
14:29	7.242	6						
14:29	8.242	6						
14:29	9.242	5						
14:29	10.242	5						
14:29	11.242	2						
14:29	12.242	2						
14:29	13.242	1						
14:29	14.242	1						
14:29	15.242	2						
14:29	16.242	2						
14:29	17.242	1						
14:29	18.242	1						
14:29	19.242	0						
14:29	20.241	0						
14:29	21.241	0						
14:29	22.241	0						
14:29	23.241	0						
14:29	24.241	0						
14:29	25.242	0						
14:29	26.242	0						

District I
1625 N. French Dr., Hobbs, NM 88240
Phone:(575) 393-6161 Fax:(575) 393-0720
District II
811 S. First St., Artesia, NM 88210
Phone:(575) 748-1283 Fax:(575) 748-9720
District III
1000 Rio Brazos Rd., Aztec, NM 87410
Phone:(505) 334-6178 Fax:(505) 334-6170
District IV
1220 S. St Francis Dr., Santa Fe, NM 87505
Phone:(505) 476-3470 Fax:(505) 476-3462

State of New Mexico
Energy, Minerals and Natural Resources
Oil Conservation Division
1220 S. St Francis Dr.
Santa Fe, NM 87505

CONDITIONS

Action 382770

CONDITIONS

Operator: EOG RESOURCES INC 5509 Champions Drive Midland, TX 79706	OGRID: 7377
	Action Number: 382770
	Action Type: [C-103] Sub. Temporary Abandonment (C-103U)

CONDITIONS

Created By	Condition	Condition Date
kfortner	Accepted for record only BLM approval required NMOCD 9/17/24 KF	9/17/2024