

Well Name: SCB 13 FEDERAL	Well Location: T23S / R28E / SEC 13 / NENW / 32.3109906 / -104.0420309	County or Parish/State: EDDY / NM
Well Number: 8	Type of Well: OIL WELL	Allottee or Tribe Name:
Lease Number: NMNM0542015	Unit or CA Name:	Unit or CA Number:
US Well Number: 300153364500S1	Operator: CHEVRON USA INCORPORATED	

Notice of Intent

Sundry ID: 2791130

Type of Submission: Notice of Intent

Type of Action: Plug and Abandonment

Date Sundry Submitted: 05/17/2024

Time Sundry Submitted: 10:15

Date proposed operation will begin: 07/15/2024

Procedure Description: Please see attached Current/Proposed Wellbore Diagrams and proposed plugging plan.

Surface Disturbance

Is any additional surface disturbance proposed?: No

NOI Attachments

Procedure Description

Proposed_Plugging_Plan_20240517101512.pdf

Proposed_WBD_20240517101501.pdf

Current_WBD_20240517101450.pdf

Well Name: SCB_13 FEDERAL

Well Location: T23S / R28E / SEC 13 /
NENW / 32.3109906 / -104.0420309County or Parish/State: EDDY /
NM

Well Number: 8

Type of Well: OIL WELL

Allottee or Tribe Name:

Lease Number: NMNM0542015

Unit or CA Name:

Unit or CA Number:

US Well Number: 300153364500S1

Operator: CHEVRON USA
INCORPORATED**Conditions of Approval****Specialist Review**

SCB_13_FED_8_BLM_P_A_Procedure_20240604134444.pdf

Operator

I certify that the foregoing is true and correct. Title 18 U.S.C. Section 1001 and Title 43 U.S.C. Section 1212, make it a crime for any person knowingly and willfully to make to any department or agency of the United States any false, fictitious or fraudulent statements or representations as to any matter within its jurisdiction. Electronic submission of Sundry Notices through this system satisfies regulations requiring a

Operator Electronic Signature: MARK TORRES

Signed on: MAY 17, 2024 10:15 AM

Name: CHEVRON USA INCORPORATED

Title: Well Abandonment Engineer

Street Address: 6301 DEAUVILLE BLVD

City: MIDLAND

State: TX

Phone: (989) 264-2525

Email address: MARKTORRES@CHEVRON.COM

Field

Representative Name:

Street Address:

City:

State:

Zip:

Phone:

Email address:

BLM Point of Contact

BLM POC Name: ZOTA M STEVENS

BLM POC Title: Petroleum Engineer

BLM POC Phone: 5752345998

BLM POC Email Address: ZSTEVENS@BLM.GOV

Disposition: Approved

Disposition Date: 06/04/2024

Signature: Zota Stevens

BLM REVISED PLUGGING PROCEDURE

1. MIRU
2. Pull rods, NU & test BOPs. Release TAC and L/D production tubing.
3. Set CIBP at 4730ft. Pressure Test. Run CBL. Contact BLM after CBL is ran.
4. Spot 25sx Cl C from 4730'- 4490'. WOC and TAG.
5. Spot 35sx of Cl C from 3556- 3216 '. WOC and TAG (DV Tool, T/Cherry Canyon)
6. Spot 35sx of Cl C from 2723'-2383'.(T/Delaware, B/Salt)
7. Spot 70sx of Cl C from 690' – surface.

**BUREAU OF LAND MANAGEMENT
Carlsbad Field Office
620 East Greene Street
Carlsbad, New Mexico 88220
575-234-5972**

**Permanent Abandonment of Federal Wells
Conditions of Approval**

Failure to comply with the following Conditions of Approval may result in a Notice of Incidents of Noncompliance (INC) in accordance with 43 CFR 3163.1.

1. Plugging operations shall commence within **ninety (90)** days from the approval date of this Notice of Intent to Abandon.

If you are unable to plug the well by the 90th day provide this office, prior to the 90th day, with the reason for not meeting the deadline and a date when we can expect the well to be plugged. Failure to do so will result in enforcement action.

The rig used for the plugging procedure cannot be released and moved off without the prior approval of the authorized officer. Failure to do so may result in enforcement action.

2. **Notification:** Contact the appropriate BLM office at least 24 hours prior to the commencing of any plugging operations. For wells in Chaves and Roosevelt County, call 575-627-0272; Eddy County, call 575-361-2822; Lea County, call 575-689-5981.

3. **Blowout Preventers:** A blowout preventer (BOP), as appropriate, shall be installed before commencing any plugging operation. The BOP must be installed and maintained as per API and manufacturer recommendations. The minimum BOP requirement is a 2M system for a well not deeper than 9,090 feet; a 3M system for a well not deeper than 13,636 feet; and a 5M system for a well not deeper than 22,727 feet.

4. **Mud Requirement:** Mud shall be placed between all plugs. Minimum consistency of plugging mud shall be obtained by mixing at the rate of 25 sacks (50 pounds each) of gel per 100 barrels of **fresh** water. Minimum nine (9) pounds per gallon.

5. **Cement Requirement:** Sufficient cement shall be used to bring any required plug to the specified depth and length. Any given cement volumes on the proposed plugging procedure are merely estimates and are not final. Unless specific approval is received, no plug except the surface plug shall be less than 25 sacks of cement. Any plug that requires a tag will have a minimum WOC time of 4 hours for Class C or accelerated cement (calcium chloride) and 6 hours for Class H. Tagging the plug means running in the hole with a string of tubing or drill pipe and placing sufficient weight on the plug to ensure its integrity. Other methods of tagging the plug may be approved by the BLM authorized officer or BLM field representative.

In lieu of a cement plug across perforations in a cased hole (not for any other plugs), a bridge plug set within 50 feet to 100 feet above the perforations shall be capped with 25 sacks of cement. If a bailer is used to cap this plug, 35 feet of cement shall be sufficient. **Before pumping or bailing cement on top of CIBP, tag will be required to verify depth. Based on depth, a tag of the cement may be deemed necessary.**

Unless otherwise specified in the approved procedure, the cement plug shall consist of either Neat Class "C", for up to 7,500 feet of depth or Neat Class "H", for deeper than 7,500 feet plugs.

Fluid used to mix the cement in R111Q shall be saturated with the salts common to the section penetrated, and in suitable proportions but not less than 1% and not more than 3% calcium chloride by weight of cement will be considered the desired mixture whenever possible.

6. Dry Hole Marker: All casing shall be cut-off at the base of the cellar or 3 feet below final restored ground level (whichever is deeper). **The BLM is to be notified *BY PHONE* (numbers listed in 2. Notifications) a minimum of 4 hours prior to the wellhead being cut off to verify that cement is to surface in the casing and all annuluses. Wellhead cut off shall commence within ten (10) calendar days of the well being plugged. If the cut off cannot be done by the 10th day, the BLM is to be contacted with justification to receive an extension for completing the cut off.**

The well bore shall then be capped with a 4-inch pipe, 10-feet in length, 4 feet above ground and embedded in cement, unless otherwise noted in COA (requirements will be attached). The following information shall be permanently inscribed on the dry hole marker: well name and number, name of the operator, lease serial number, surveyed location (quarter-quarter section, section, township and range or other authorized survey designation acceptable to the authorized officer such as metes and bounds). A weep hole shall be left if a metal plate is welded in place.

7. Subsequent Plugging Reporting: Within 30 days after plugging work is completed, file one original and three copies of the Subsequent Report of Abandonment, Form 3160-5 to BLM. The report should give in detail the manner in which the plugging work was carried out, the extent (by depths) of cement plugs placed, and the size and location (by depths) of casing left in the well. **Show date well was plugged.**

8. Trash: All trash, junk and other waste material shall be contained in trash cages or bins to prevent scattering and will be removed and deposited in an approved sanitary landfill. Burial on site is not permitted.

Following the submission and approval of the Subsequent Report of Abandonment, surface restoration will be required. See attached reclamation objectives.



United States Department of the Interior

BUREAU OF LAND MANAGEMENT

Carlsbad Field Office
620 E. Greene St.
Carlsbad, New Mexico 88220-6292
www.blm.gov/nm



In Reply Refer To: 1310

Reclamation Objectives and Procedures

Reclamation Objective: Oil and gas development is one of many uses of the public lands and resources. While development may have a short- or long-term effect on the land, successful reclamation can ensure the effect is not permanent. During the life of the development, all disturbed areas not needed for active support of production operations should undergo “interim” reclamation in order to minimize the environmental impacts of development on other resources and uses. At final abandonment, well locations, production facilities, and access roads must undergo “final” reclamation so that the character and productivity of the land and water are restored.

The long-term objective of final reclamation is to set the course for eventual ecosystem restoration, including the restoration of the natural vegetation community, hydrology, and wildlife habitats. In most cases this means returning the land to a condition approximating or equal to that which existed prior to the disturbance. The final goal of reclamation is to restore the character of the land and water to its pre-disturbance condition. The operator is generally not responsible for achieving full ecological restoration of the site. Instead, the operator must achieve the short-term stability, visual, hydrological, and productivity objectives of the surface management agency and take steps necessary to ensure that long-term objectives will be reached through natural processes.

To achieve these objectives, remove any/all contaminants, scrap/trash, equipment, pipelines and powerlines **(Contact service companies, allowing plenty of time to have the risers and power lines and poles removed prior to reclamation, don't wait till the last day and try to get them to remove infrastructure)**. Strip and remove caliche, contour the location to blend with the surrounding landscape, re-distribute the native soils, provide erosion control as needed, rip (across the slope and seed as specified in the original APD COA. **This will apply to well pads, facilities, and access roads.** Barricade access road at the starting point. If reserve pits have not reclaimed due to salts or other contaminants, submit a plan for approval, as to how you propose to provide adequate restoration of the pit area.

1. The Application for Permit to Drill or Reenter (APD, Form 3160-3), Surface Use Plan of Operations must include adequate measures for stabilization and reclamation of disturbed lands. Oil and Gas operators must plan for reclamation, both interim and final, up front in the APD process as per Onshore Oil and Gas Order No. 1.
2. For wells and/or access roads not having an approved plan, or an inadequate plan for surface reclamation (either interim or final reclamation), the operator must submit a proposal describing the procedures for reclamation. For interim reclamation, the appropriate time for submittal would be when filing the Well Completion or Recompletion Report and Log (Form 3160-4). For final reclamation, the appropriate time for submittal would be when filing the Notice of Intent, or the Subsequent Report of Abandonment, Sundry Notices and Reports on Wells (Form 3160-5). Interim reclamation is to be completed within 6 months of well completion, and final reclamation is to be completed within 6 months of well abandonment.
3. The operator must file a Subsequent Report Plug and Abandonment (Form 3160-5) following the plugging of a well.
4. Previous instruction had you waiting for a BLM specialist to inspect the location and provide you with reclamation requirements. If you have an approved Surface Use Plan of Operation and/or an approved Sundry Notice, you are free to proceed with reclamation as per approved APD. If you have issues or

concerns, contact a BLM specialist to assist you. It would be in your interest to have a BLM specialist look at the location and access road prior to the removal of reclamation equipment to ensure that it meets BLM objectives. Upon conclusion submit a Form 3160-5, Subsequent Report of Reclamation. This will prompt a specialist to inspect the location to verify work was completed as per approved plans.

5. The approved Subsequent Report of Reclamation will be your notice that the native soils, contour and seedbed have been reestablished. If the BLM objectives have not been met the operator will be notified and corrective actions may be required.
6. It is the responsibility of the operator to monitor these locations and/or access roads until such time as the operator feels that the BLM objective has been met. If after two growing seasons the location and/or access roads are not showing the potential for successful revegetation, additional actions may be needed. When you feel the BLM objectives have been met submit a Final Abandonment Notice (FAN), Form 3160-5, stating that all reclamation requirements have been achieved and the location and/or access road is ready for a final abandonment inspection.
7. At this time the BLM specialist will inspect the location and/or access road. If the native soils and contour have been restored, and the revegetation is successful, the FAN will be approved, releasing the operator of any further liability of the location and/or access road. If the location and/or access road have not achieved the objective, you will be notified as to additional work needed or additional time being needed to achieve the objective.

If there are any questions, please feel free to contact any of the following specialists:

Jim Amos
Supervisory Petroleum Engineering Tech/Environmental Protection Specialist
575-234-5909 (Office), 575-361-2648 (Cell)

Arthur Arias
Environmental Protection Specialist
575-234-6230

Crisha Morgan
Environmental Protection Specialist
575-234-5987

Jose Martinez-Colon
Environmental Protection Specialist
575-234-5951

Mark Mattozzi
Environmental Protection Specialist
575-234-5713

Robert Duenas
Environmental Protection Specialist
575-234-2229

Doris Lauger Martinez
Environmental Protection Specialist
575-234-5926

Jaden Johnston
Environmental Protection Asst. (Intern)
575-234-6252

Proposed Plugging Plan (for permit submission only):

- 1 MIRU
- 2 Pull rods, NU & test BOPs. Release TAC and L/D production tubing
- 3 MIRU Wireline, set CIBP within 50' of top perf at +/- 4,730'
- 4 Pressure test CIBP/Casing to 500 psi. Perform CBL to confirm TOC in production annulus (**adjust plugs to perf/ squeeze pending CBL results**)
- 5 Spot 25 sx Class C f/ 4,730' - 4,490'; WOC/tag plug (Contact BLM for permission to waive tag pending passing pressure test on CIBP/casing)
- 6 Isolate Cherry Canyon/DV Tool: Spot 35 sx Class C f/ 3,556' - 3,216' (WOC/tag plug)
- 7 Isolate Base of Salt: Spot 35 sx Class C f/ 2,723' - 2,383'
- 8 Isolate Fresh Water/Surface Shoe: Spot 70 sx Class C f/ 690' - 0'
- 9 RDMO

CURRENT WELLBORE DIAGRAM

FIELD: E Loving Delaware

LEASE/UNIT: SCB 13 Federal

WELL NO.: #008

COUNTY: Eddy

LOCATION: 660' FNL & 2310' FWL, Unit C, Sec. 13, T-23S, R-28E

API NO.: 30-015-33645

CHEVNO:

PROD FORMATION: Brushy Canyon

STATUS: SI Oil Well

Spud Date: 2/9/2005

TD Date: 2/18/2005

Comp Date: 4/13/2005

GL: 2,975'

KB:

Base of Fresh Water: 180'

POTASH: No

Surface Casing

Size:	8 5/8"
Wt., Grd.:	24#
Depth:	595'
Sxs Cmt:	650
Circulate:	
TOC:	Surface
Hole Size:	12-1/4"

Production Casing

Size:	5-1/2"
Wt., Grd.:	15.5 J-55
Depth:	6,476'
DV Tool:	3,506'
Sxs Cmt:	1250
Circulate:	Yes - 46 sx
TOC:	Surface
Hole Size:	7-7/8"

Formation	Top (MD)
Top of Salt	0
Base of Salt	2,673'
Lamar	2,673'
Bell Canyon	2,713'
Cherry Canyon	3,501'
Brushy Canyon	4,769'
Bone Spring	6,267'

BASED ON LAST KNOWN ROD/TUBING RECORDS

TUBING ASSEMBLY			
Description	# of jts	Length	Depth
2-7/8" J-55 6.5# EUE	?		6,244'
TAC	?		
2-7/8" J-55 6.5# EUE	?		
SN: 2-7/8" EUE	?		
Perf/Mud: 2-7/8" EUE	?		
BP: 2-7/8" EUE	?		

ROD PUMP ASSEMBLY			
Description	# of jts	Length	Depth
Polish Rod: 1-1/2"	1	22	
Pony: 2', 6', 8'	3	16	
Rods: 7/8"	79		1,991'
Rods: 3/4"	158		5,941'
Pump: 25-150-RHBC-20	1		5,963'
Gas Anchor	1		

6,476' TD / 6,392' PBTD

PROPOSED WELLBORE DIAGRAM

FIELD: E Loving Delaware

LEASE/UNIT: SCB 13 Federal

WELL NO.: #008

COUNTY: Eddy

LOCATION: 660' FNL & 2310' FWL, Unit C, Sec. 13, T-23S, R-28E

API NO.: 30-015-33645

CHEVNO:

PROD FORMATION: Brushy Canyon

STATUS: SI Oil Well

Spud Date: 2/9/2005

TD Date: 2/18/2005

Comp Date: 4/13/2005

GL: 2,975'

KB:

Base of Fresh Water: 180'

POTASH: No

ST: New Mexico

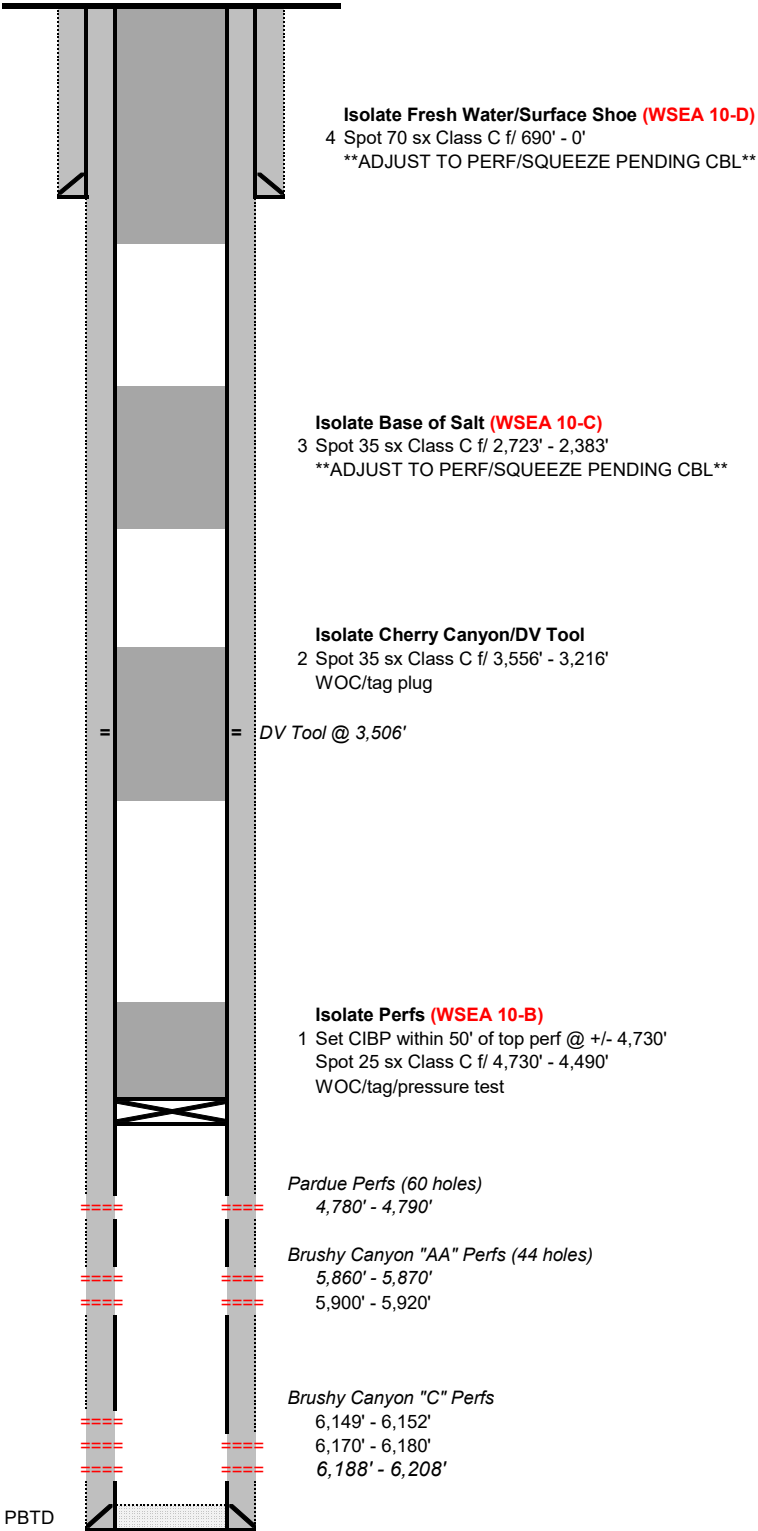
Surface Casing

Size:	8 5/8"
Wt., Grd.:	24#
Depth:	595'
Sxs Cmt:	650
Circulate:	
TOC:	Surface
Hole Size:	12-1/4"

Production Casing

Size:	5-1/2"
Wt., Grd.:	15.5 J-55
Depth:	6,476'
DV Tool:	3,506'
Sxs Cmt:	1250
Circulate:	Yes - 46 sx
TOC:	Surface
Hole Size:	7-7/8"

Formation	Top (MD)
Top of Salt	0
Base of Salt	2,673'
Lamar	2,673'
Bell Canyon	2,713'
Cherry Canyon	3,501'
Brushy Canyon	4,769'
Bone Spring	6,267'



State of New Mexico
Energy, Minerals and Natural Resources Department
Oil Conservation Division
Standard Plugging Conditions



This document provides OCD's general plugging conditions of approval. It should be noted that the list below may not cover special plugging programs in unique and unusual cases, and OCD expressly reserves the right to impose additional requirements to the extent dictated by project conditions. The OCD also reserves the right to approve deviations from the below conditions if field conditions warrant a change. A C-103F NOI to P&A must be approved prior to plugging operations. Failure to comply with the conditions attached to a plugging approval may result in a violation of 19.15.5.11 NMAC, which may result in enforcement actions, including but not limited to penalties and a requirement that the well be re-plugged as necessary.

1. Notify OCD office at least 24 hours before beginning work and seek prior approval to implementing any changes to the C-103 NOI to PA.
 - North Contact, Monica Kuehling, 505-320-0243, monica.kuehling@emnrd.nm.gov
 - South Contact, Gilbert Cordero, 575-626-0830, gilbert.cordero@emnrd.nm.gov
2. A Cement Bond Log is required to ensure strata isolation of producing formations, protection of water and correlative rights. A CBL must be run or be on file that can be used to properly evaluate the cement behind the casing.

Note: Logs must be submitted to OCD via OCD permitting. A copy of the log may be emailed to OCD inspector for faster review times, but emailing does not relieve the operators obligation to submit through OCD permitting.

3. Once Plugging operations have commenced, the rig must not rig down until the well is fully plugged without OCD approval. If gap in plugging operations exceeds 30 days, the Operator must file a subsequent sundry of work performed and revised NOI for approval on work remaining. At no time shall the rig be removed from location if it will result in waste or contamination of fresh water.
4. Insure all bradenheads have been exposed, identified and valves are operational prior to rig up.
5. Fluids must be placed between all cement plugs mixed at 25 sacks per 100 bbls of water.
 - North, water or mud laden fluids
 - South, mud laden fluids
6. Closed loop system is to be used for entire plugging operation. Upon completion, contents of steel pits are to be hauled to an OCD permitted disposal facility.

7. Class of cement shall be used in accordance with the below table for depth allowed.

Class	TVD Lower Limit (feet)
Class A/B	6,000
Class I/II	6,000
Class C or III	6,000
Class G and H	8,000
Class D	10,000
Class E	14,000
Class F	16,000

8. After cutting the well head any “top off cement jobs” must remain static for 30 minutes. Any gas bubbles or flow during this 30 minutes shall be reported to the OCD for approval of next steps.
9. Trucking companies being used to haul oilfield waste fluids (Commercial or Private) to a disposal facility shall have an approved OCD C-133 permit.
- A copy of this permit shall be available in each truck used to haul waste products.
 - It is the responsibility of the Operator and Contractor to verify that this permit is in place prior to performing work.
 - Drivers shall be able to produce a copy upon request of an OCD Compliance Officer.
10. Filing a [C-103] Sub. Plugging (C-103P) will serve as notification that the well has been plugged.
11. A [C-103] Sub. Release After P&A (C-103Q) shall be filed no later than a year after plugging and a site inspection by OCD Compliance officer to determine if the location is satisfactorily cleaned, all equipment, electric poles and trash has been removed to meet OCD standards before bonding can be released.
12. Produced water or brine-based fluids **may not** be used during any part of plugging operations without **prior OCD approval**.
13. Cementing;
- All cement plugs will be neat cement and a minimum of 100’ in length. 50’ of calculated cement excess required for inside casing plugs and 100% calculated cement excess required on outside casing plugs.
 - If cement does not exist between or behind the casing strings at recommended formation depths, the casing perforations will be shot at 50’ below the formation top and the cement retainer shall be set no more than 50’ from the perforations.
 - WOC (Wait on Cement) time will be:
 - 4 hours for accelerated (calcium chloride) cement.
 - 6 hours on regular cement.
 - Operator must tag all cement plugs unless it meets the below condition.
 - The operator has a passing pressure test for the casing annulus and the plug is only an inside plug.
 - If perforations are made operator must tag all plugs using the work string to tag unless given approval to tag with wireline by the correct contact from COA #1 of this document.
 - This includes plugs pumped underneath a cement retainer to ensure retainer seats properly after cement is pumped.
 - Cement can only be bull-headed with specific prior approval.
 - Squeeze pressures are not to exceed the exposed formations frac gradient or the burst pressure of the casing.

14. A cement plug is required to be set from 50' below to 50' above (straddling) formation tops, casing shoes, casing stubs, any attempted casing cut offs, anywhere the casing is perforated, DV tools.
- Perforation/Formation top plug. (When there is less than 100ft between the top perforation to the formation top.) These plugs are required to be started no greater than 50ft from the top perforation. However, the plug should be set below the formation top or as close to the formation top as possible for the maximum isolation between the formations. The plug is required to be a 100ft cement plug plus excess.
 - Perforation Plug when a formation top is not included. These plugs are required to be started within 50ft of the top perforation. The plug is required to be a 100ft cement plug plus excess.
 - Cement caps on top of bridge plugs or cement retainers for perforation plugs, that are not straddling a formation top, may be set using a bailer with a minimum of 35' of cement in lieu of the 100' plug. The bridge plug or retainer must be set within 50ft of the perforations.
 - Perforations are required below the surface casing shoe if cement does not exist behind the casing, a 30-minute minimum wait time will be required immediately after perforating to determine if gas and/or water flows are present. If flow is present, the well will be shut-in for a minimum of one hour and the pressure recorded. If gas is detected contact the OCD office for directions.
15. No more than 3000 feet is allowed between cement plugs in cased hole and no more than 2000 feet is allowed in open hole.
16. Formation Tops to be isolated with cement plugs, but not limited to are:
- Northwest See Figure A
 - South (Artesia) See Figure B
 - Potash See Figure C
 - In the R-111-P (Or as subsequently revised) Area a solid cement plug must be set across the salt section. Fluid used to mix the cement shall be saturated with the salts that are common to the section penetrated and in suitable proportions, not more than 3% calcium chloride (by weight of cement) will be considered the desired mixture whenever possible, woe 4 hours and tag, this plug will be 50' below the bottom and 50' above the top of the Formation.
 - South (Hobbs) See Figure D1 and D2
 - Areas not provided above will need to be reviewed with the OCD on a case by case basis.
17. Markers
- Dry hole marker requirements 19.15.25.10.
The operator shall mark the exact location of plugged and abandoned wells with a steel marker not less than four inches in diameter set in cement and extending at least four feet above mean ground level. The marker must include the below information:
 1. Operator name
 2. Lease name and well number
 3. API number
 4. Unit letter
 5. Section, Township and Range

- AGRICULTURE (Below grade markers)

In Agricultural areas a request can be made for a below ground marker. For a below ground marker the operator must file their request on a C-103 notice of intent, and it must include the following;

A) Aerial photo showing the agricultural area

B) Request from the landowner for the below ground marker.

C) Subsequent plugging report for a well using a below ground marker must have an updated C-102 signed by a certified surveyor for SHL.

Note: A below ground marker is required with all pertinent information mentioned above on a plate, set 3' below ground level, a picture of the plate will be supplied to OCD for record, the exact location of the marker (longitude and latitude by GPS) will be provided to OCD. OCD requires a current survey to verify the location of the below ground marker, however OCD will accept a GPS coordinate that were taken with a GPS that has an accuracy of within 15 feet.

18. If work has not commenced within 1 year of the approval of this procedure, the approval is automatically expired. After 1 year a new [C-103] NOI Plugging (C-103F) must be submitted and approved prior to work.

Figure A

North Formations to be isolated with cement plugs are:

- San Jose
- Nacimiento
- Ojo Alamo
- Kirtland
- Fruitland
- Picture Cliffs
- Chacra (if below the Chacra Line)
- Mesa Verde Group
- Mancos
- Gallup
- Basin Dakota (plugged at the top of the Graneros)
- Deeper formations will be reviewed on a case-by-case basis

Figure B

South (Artesia) Formations to be isolated with cement plugs are:

- Fusselman
- Montoya
- Devonian
- Morrow
- Strawn
- Atoka
- Permo-Penn
- Wolfcamp
- Bone Springs
- Delaware , in certain areas where the Delaware is subdivided into;
 - 1. Bell Canyon
 - 2. Cherry Canyon
 - 3. Brushy Canyon
- Any salt sections
- Abo
- Yeso
- Glorieta
- San Andres
- Greyburg
- Queen
- Yates

Figure C

Potash Area R-111-P

T 18S – R 30E

Sec 10 Unit P. Sec 11 Unit M,N. Sec 13 Unit L,M,N. Sec 14 Unit C -P. Sec 15 Unit A G,H,I,J,K,N,O,P. Sec 22 Unit All

except for M. Sec 23, Sec 24 Unit C,D,E,L, Sec 26 Unit A-G, Sec 27 Unit A,B,C

T 19S – R 29E

Sec 11 Unit P. Sec 12 Unit H-P. Sec 13. Sec 14 Unit A,B,F-P. Sec 15 Unit P. Sec 22 Unit A,B,C,F,G,H,I,J K,N,O,P. Sec 23.

Sec 24. Sec 25 Unit D. Sec 26 Unit A- F. Sec 27 Unit A,B,C,F,G,H.

T 19S – R 30E

Sec 2 Unit K,L,M,N. Sec 3 Unit I,L,M,N,O,P. Sec 4 Unit C,D,E,F,G,I-P. Sec 5 Unit A,B,C,E-P. Sec 6 Unit I,O,P. Sec 7 – Sec

10. Sec 11 Unit D, G—P. Sec 12 Unit A,B,E-P. Sec 13 Unit A-O. Sec 14-Sec 18. Sec 19 Unit A-L, P. Sec 20 – Sec 23. Sec

24 Unit C,D,E,F,L,M,N. Sec 25 Unit D. Sec 26 Unit A-G, I-P. Sec 27, Sec 28, Sec 29 Unit

A,B,C,D,F,G,H,I,J,O,P. Sec 32

Unit A,B,G,H,I,J,N,O,P. Sec 33. Sec 34. Sec 35. Sec 36 Unit D,E,F,I-P.

T 19S – R 31E

Sec 7 Unit C,D,E,F,L. Sec 18 Unit C,D,E,F,G,K,L. Sec 31 Unit M. Sec 34 Unit P. Sec 35 Unit M,N,O. Sec 36 Unit O,P.

T 20S – R 29E

Sec 1 Unit H,I,P. Sec 13 Unit E,L,M,N. Sec 14 Unit B-P. Sec 15 Unit A,H,I,J,N,O,P. Sec 22 Unit A,B,C,F,G,H,I,J,O,P. Sec

23. Sec 24 Unit C,D,E,F,G,J-P. Sec 25 Unit A-O. Sec 26. Sec 27 Unit A,B,G,H,I,J,O,P. Sec 34 Unit A,B,G,H. Sec 35 Unit

A-H. Sec 36 Unit B-G.

T 20S – R 30E

Sec 1 – Sec 4. Sec 5 Unit A,B,C,E-P. Sec 6 Unit E,G-P. Sec 7 Unit A-H,I,J,O,P. Sec 8 – 17. Sec 18 Unit A,B,G,H,I,J,O,P.

Sec 19 Unit A,B,G,H,I,J,O,P. Sec 20 – 29. Sec 30 Unit A-L,N,O,P. Sec 31 Unit A,B,G,H,I,P. Sec 32 – Sec 36.

T 20S – R 31E

Sec 1 Unit A,B,C,E-P. Sec 2. Sec 3 Unit A,B,G,H,I,J,O,P. Sec 6 Unit D,E,F,J-P. Sec 7. Sec 8 Unit E-P. Sec 9 Unit E,F,J-P.

Sec 10 Unit A,B,G-P. Sec 11 – Sec 36.

T 21S – R 29E

Sec 1 – Sec 3. Sec 4 Unit L1 – L16,I,J,K,O,P. Sec 5 Unit L1. Sec 10 Unit A,B,H,P. Sec 11 – Sec 14. Sec 15 Unit A,H,I. Sec

23 Unit A,B. Sec 24 Unit A,B,C,D,F,G,H,I,J,O,P. Sec 25 Unit A,O,P. Sec 35 Unit G,H,I,J,K,N,O,P. Sec 36 A,B,C,F – P.

T 21S – R 30E

Sec 1 – Sec 36

T 21S – R 31E

Sec 1 – Sec 36

T 22S – R 28E

Sec 36 Unit A,H,I,P.

T 22S – R 29E

Sec 1. Sec2. Sec 3 Unit I,J,N,O,P. Sec 9 Unit G – P. Sec 10 – Sec 16. Sec 19 Unit H,I,J. Sec 20 – Sec 28. Sec 29 Unit

A,B,C,D,G,H,I,J,O,P. Sec 30 Unit A. Section 31 Unit C – P. Sec 32 – Sec 36

T 22S – R 30E

Sec 1 – Sec 36

T 22S – R 31E

Sec 1 – Sec 11. Sec 12 Unit B,C,D,E,F,L. Sec 13 Unit E,F,K,L,M,N. Sec 14 – Sec 23. Sec 24 Unit C,D,E,F,K,L,M,N. Sec 25

Unit A,B,C,D. Sec 26 Unit A,BC,D,G,H. Sec 27 – Sec 34.

T 23S – R 28E

Sec 1 Unit A

T 23S – R 29E

Sec 1 – Sec 5. Sec 6 Unit A – I, N,O,P. Sec 7 Unit A,B,C,G,H,I,P. Sec 8 Unit A – L, N,O,P. Sec 9 – Sec 16. Sec 17 Unit

A,B,G,H,I,P. Sec 21 – Sec 23. Sec 24 Unit A – N. Sec 25 Unit D,E,L. Sec 26. Sec 27. Sec 28 Unit A – J, N,O,P. Sec 33

Unit A,B,C. Sec 34 Unit A,B,C,D,F,G,H. Sec 35. Sec 36 Unit B,C,D,E,F,G,K,L.

T 23S – R 30E

Sec 1 – Sec 18. Sec 19 Unit A – I,N,O,P. Sec 20, Sec 21. Sec 22 Unit A – N, P. Sec 23, Sec 24, Sec 25. Sec 26 Unit

A,B,F-P. Sec 27 Unit C,D,E,I,N,O,P. Sec 28 Unit A – H, K,L,M,N. Sec 29 Unit A – J, O,P. Sec 30 Unit A,B. Sec 32 A,B. Sec

33 Unit C,D,H,I,O,P. Sec 34, Sec 35, Sec 36.

T 23S – R 31E

Sec 2 Unit D,E,J,O. Sec 3 – Sec 7. Sec 8 Unit A – G, K – N. Sec 9 Unit A,B,C,D. Sec 10 Unit D,P. Sec 11 Unit G,H,I,J,M,N,O,P. Sec 12 Unit E,L,K,M,N. Sec 13 Unit C,D,E,F,G,J,K,L,M,N,O. Sec 14. Sec 15 Unit A,B,E – P. Sec 16 Unit

I, K – P. Sec 17 Unit B,C,D,E, I – P. Sec 18 – Sec 23. Sec 24 Unit B – G, K,L,M,N. Sec 25 Unit B – G, J,K,L. Sec 26 – Sec

34. Sec 35 Unit C,D,E.

T 24S – R 29E

Sec 2 Unit A, B, C, D. Sec 3 Unit A

T 24S – R 30E

Sec 1 Unit A – H, J – N. Sec 2, Sec 3. Sec 4 Unit A,B,F – K, M,N,O,P. Sec 9 Unit A – L. Sec 10 Unit A – L, O,P. Sec 11.

Sec 12 Unit D,E,L. Sec 14 Unit B – G. Sec 15 Unit A,B,G,H.

T 24S – R 31E

Sec 3 Unit B – G, J – O. Sec 4. Sec 5 Unit A – L, P. Sec 6 Unit A – L. Sec 9 Unit A – J, O, P. Sec 10 Unit B – G, K – N. Sec

35 Unit E – P. Sec 36 Unit E, K, L, M, N.

T 25S – R 31E

Sec 1 Unit C, D, E, F. Sec 2 Unit A – H.

Figure D1 and D2

South (Hobbs) Formations to be isolated with cement plugs are:

The plugging requirements in the Hobbs Area are based on the well location within specific areas of the Area (See Figure D1). The Formations in the Hobbs Area to be isolated with cement plugs are (see Figure D2)

Figure D1 Map

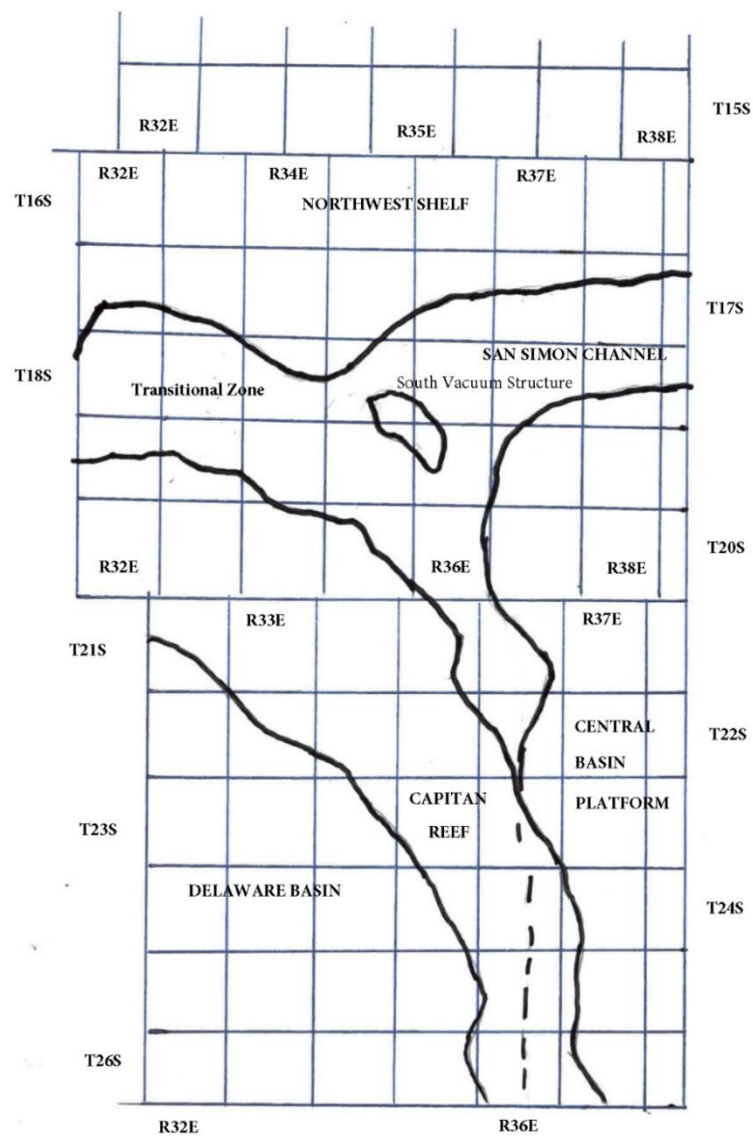


Figure D2 Formation Table

100' P'lug to isolate upper and lower fresh water zones (typiailly 2.50' to 350')						
NDItrhwst Shelf	C;iptan Reef Area	Tran5ition Zone	San Simon Oh.annel	South \lacJUUm Structure	Delaware Basin	Ce<n,tiral Basin Platform
Granit \./ash (Detrital basement material and fractured pre-Cambrian basement rock)	Siluro-Devonian	Morrow	Siluro-Devonian	Ellenburger	Siluro-Devonian	Granit \./ash (Detrital basement material, fractured pre-Cambrian basement rock and fracture Mafic Volcanic intrusives).
Montoya	Mississippian	Atoka	Morrow	Mckee	Morrow	Ellenburger
Fusselman	Morrow	Strawn	\./olfcamp	Siluro-Devonian	Atoka	Connell
Woodford	Atoka	Cisco	Abo Reef	Woodford	Strawn	Waddell
Siluro-Devonian	Strawn	Pennsylvanian	Bone Spring	Mississippian	Pennsylvanian	Mckee
Chester	Pennsylvanian	\./olfcamp	Delaware	Barnett Shale	Low er \./olfcamp	Simpson Group
Austin	\./olfcamp	Bone Spring	San Andres	Morrow	Upper \./olfcamp	Montoya
Mississippian	Abo Reef, if present	Delaware	Queen	Atoka	\./olfcamp	Fusselman
Morrow	Abo, if present	San Andres	Yates	Strawn	Third Bone Spring Sand (Top of \./olfbone)	Silurian
Atoka	Queen, if present	Grayburg-San Andres	Base of Salt	Canyon	First Bone Spring Sand (Top of Lower Bone Spring)	Devonian
Lower Pennsylvanian	Bone Spring	Queen	Rustler	Pennsylvanian	Bone Spring	Strawn
Cisco-Canyon	Delaware	Seven Rivers		Blinebry	Brushy Canyon	Pennsylvanian
Pennsylvanian	Base Capitan Reef	Yates		Bone Spring	Delaw are (Base of Salt)	\./olfcamp
Bough	Seven Rivers	Base of Salt		San Andres	Rustler	Abo
\./olfcamp	Yates	Rustler		Queen		Abo Reef
Abo	Top Capitan Reef			Base of Salt		Drinkard
Abo Reef, if present	Base of Salt			Rustler		Tubb
Yeso (Township 15 South to Township 17 South)	Rustler					Blinebry
Drinkard or Low er Yeso (Township 15 South to Township 17 South)						Paddock
Tubb (Township 15 South to Township 17 South)						Glorieta
Blinebry (Township 15 South to Township 17 South)						San Andres
Paddock (Township 15 South to Township 17 South)						Grayburg
Glorieta						Grayburg-San Andres
San Andres						Queen
Queen (Township 15 South to Township 17 South)						Seven Rivers
Seven Rivers (Township 15 South to Township 17 South)						Yates
Yates (Township 15 South to Township 17 South)						Base of Salt
Base of Salt						Rustler
Rustler						

District I
1625 N. French Dr., Hobbs, NM 88240
Phone:(575) 393-6161 Fax:(575) 393-0720
District II
811 S. First St., Artesia, NM 88210
Phone:(575) 748-1283 Fax:(575) 748-9720
District III
1000 Rio Brazos Rd., Aztec, NM 87410
Phone:(505) 334-6178 Fax:(505) 334-6170
District IV
1220 S. St Francis Dr., Santa Fe, NM 87505
Phone:(505) 476-3470 Fax:(505) 476-3462

State of New Mexico
Energy, Minerals and Natural Resources
Oil Conservation Division
1220 S. St Francis Dr.
Santa Fe, NM 87505

CONDITIONS

Action 384857

CONDITIONS

Operator: CHEVRON U S A INC 6301 Deauville Blvd Midland, TX 79706	OGRID: 4323
	Action Number: 384857
	Action Type: [C-103] NOI Plug & Abandon (C-103F)

CONDITIONS

Created By	Condition	Condition Date
loren.diede	Notify NMOCD 24 hours prior to beginning P&A operations.	9/23/2024
loren.diede	CBL is to be submitted into NMOCD Imaging via Electronic Permitting.	9/23/2024
loren.diede	NMOCD does not consider this well within LPCH Area and therefore a surface P&A marker is required.	9/23/2024
loren.diede	A marker photo and GPS coordinates is to be submitted with the C-103P subsequent report.	9/23/2024