

Well Name: JICARILLA BR B	Well Location: T25N / R4W / SEC 34 / SESE / 36.3518865 / -107.2336273	County or Parish/State: RIO ARRIBA / NM
Well Number: 13	Type of Well: CONVENTIONAL GAS WELL	Allottee or Tribe Name: JICARILLA APACHE
Lease Number: JIC66	Unit or CA Name:	Unit or CA Number:
US Well Number: 3003905697	Operator: HILCORP ENERGY COMPANY	

Subsequent Report

Sundry ID: 2812297

Type of Submission: Subsequent Report	Type of Action: Plug and Abandonment
Date Sundry Submitted: 09/17/2024	Time Sundry Submitted: 12:09
Date Operation Actually Began: 09/09/2024	

Actual Procedure: The subject well was Plugged and Abandoned on 09/09/2024 per the attached report. A surface plate was used as the P&A marker located at Lat 36.3518865, Long -107.2336273, see attached photo.

SR Attachments

Actual Procedure

Jicarilla_BR_B_13_SR_20240917120539.pdf

Well Name: JICARILLA BR B	Well Location: T25N / R4W / SEC 34 / SESE / 36.3518865 / -107.2336273	County or Parish/State: RIO ARRIBA / NM
Well Number: 13	Type of Well: CONVENTIONAL GAS WELL	Allottee or Tribe Name: JICARILLA APACHE
Lease Number: JIC66	Unit or CA Name:	Unit or CA Number:
US Well Number: 3003905697	Operator: HILCORP ENERGY COMPANY	

Operator

I certify that the foregoing is true and correct. Title 18 U.S.C. Section 1001 and Title 43 U.S.C. Section 1212, make it a crime for any person knowingly and willfully to make to any department or agency of the United States any false, fictitious or fraudulent statements or representations as to any matter within its jurisdiction. Electronic submission of Sundry Notices through this system satisfies regulations requiring a

Operator Electronic Signature: TAMMY JONES

Signed on: SEP 17, 2024 12:09 PM

Name: HILCORP ENERGY COMPANY

Title: Regulatory Compliance Specialist

Street Address: 382 ROAD 3100

City: AZTECState: NM

Phone: (505) 324-5185

Email address: TAJONES@HILCORP.COM

Field

Representative Name:

Street Address:

City:State:Zip:

Phone:

Email address:

BLM Point of Contact

BLM POC Name: MATTHEW H KADE

BLM POC Title: Petroleum Engineer

BLM POC Phone: 5055647736

BLM POC Email Address: MKADE@BLM.GOV

Disposition: Accepted

Disposition Date: 09/17/2024

Signature: Matthew Kade

JICARILLA BR B 13**30.039.05697****PLUG AND ABANDONMENT**

9/3/2024 – CK PRESSURES. SICP – 0 PSI; SITP – 0 PSI; SIBHP – 0 PSI. BDW – 0 MINS. SISW. SDFN.

9/4/2024 – MIRU. CK PRESSURES. SICP – 0 PSI; SITP – 0 PSI; SIBHP – 0 PSI. BDW – 0 MINS. N/D WH AND N/U BOP. FUNCTION TEST AND PSI TEST BOP. R/U FLOOR AND TONGS. R/U PACKOFF. RIH W/ CIBP. TAG AT 1674'. L/D CIBP. RIH W/ GAUGE RING. WORK DOWN TO 1717'. TALLY AND P/U 1-1/4 IJ TUBING. TOH W/ 1-1/4 TUBING. P/U 2.25" BIT. P/U TUBING AND TAG @ 3226'. TOH AND L/D BIT. R/U WIRELINE. RIH AND TAG W/ CIBP @ 3000'. RIH AND SET CICR @ 2976'. R/D WIRELINE. P/U STINGER AND TIH W/ TUBING AND STING INTO RETAINER. SPACE OUT WITH PUP JOINTS. SISW. SDFN. **BLM REP KEN CHRISTENSEN ON LOCATION.**

9/5/2024 – CK PRESSURES. SICP – 0 PSI; SIBHP – 0 PSI. BDW – 0 MINS. REPLACE NIPPLE ON BOP. ATTEMPT INJECTION RATE BELOW RETAINER (FAILED). CIRCULATE WELL CLEAN W/ FRESH WATER. TOH W/ TUBING. R/U WIRELINE. SET CIBP @ 2966'. PSI TEST CASING TO 560 PSI (FAILED). RIH W/ LOGGING TOOLS. PERFORM CBL FROM 2966' TO SURFACE. REPORT RESULTS TO ENGINEER. RIH AND PERFORATE @ 2840'. ESTABLISH INJECTION RATE (FAILED). R/D WIRELINE. TIH W/ TUBING. **PUMP BALANCE PLUG #1** (8 SXS CLASS G - 1.15 YIELD - 15.8 PPG, SLURRY BBLS=1.6, MIX WATER= 1 BBL, BOC = 2966', EST TOC = 2700'). TOH TO TOP OF CEMENT. REVERSE CIRCULATE. PUH EOT @ 2055'. SISW. SDFN. **BLM REP KEN CHRISTENSEN ON LOCATION.**

9/6/2024 – CK PRESSURES. SICP – 0 PSI; SIBHP – 0 PSI. BDW – 0 MINS. TIH W/ TAG SUB AND TAG TOC @ 2730'. TOH W/ TUBING. PSI TEST CASING TO 560 PSI (FAILED). R/U WIRELINE. RIH AND PERFORATE @ 2610'. ESTABLISH INJECTION RATE (FAILED). R/D WIRELINE. TIH W/ TUBING (EOT @ 2660'. **PUMP BALANCE PLUG #2** (9 SXS CLASS G - 1.15 YIELD - 15.8 PPG, SLURRY BBLS=1.8, MIX WATER= 1 BBL, BOC = 2660', EST TOC = 2342'). TOH TO TOP OF CEMENT. REVERSE CIRCULATE. TOH 10 JTS TO DERRICK. TIH AND TAG TOC @ 2303'. L/D 26 JTS. TOH AND L/D TAG SUB. R/U WIRELINE. RIH AND PERFORATE @ 1422'. ESTABLISH INJECTION RATE (FAILED). TIH TO EOT @ 1472'. **PUMP PLUG #3** (9 SXS CLASS G - 1.15 YIELD - 15.8 PPG, SLURRY BBLS=1.8 MIX WATER= 1 BBL, BOC = 1472', EST TOC = 1154'). TOH AND L/D TAG SUB. SISW. SDFWND. **BLM REP KEN CHRISTENSEN ON LOCATION.**

9/9/2024 – CK PRESSURES. SICP – 0 PSI; SIBHP – 0 PSI. BDW – 0 MINS. TIH AND TAG PLUG #3 @ 1084'. TOH AND L/D REMAINDER OF TUBING. R/U WIRELINE AND RIH AND PERFORATE @ 200'. R/D WIRELINE. R/U AWS CEMENT PACKAGE. PUMP DOWN CASING AND ESTABLISH CIRCULATION UP BRADENHEAD. **PUMP SURFACE PLUG** (95 SXS CLASS G CEMENT, 1.15 YIELD 15.9 PPG. 11.3 BBLS, MIX WATER. 11.5 BBLS OF SLURRY. CIRCULATE CEMENT TO SURFACE. EST TOC @ 0'). WOC. N/D BOP. CUT OFF WELLHEAD. TAG CEMENT DOWN ALL STRINGS: ~100' INSIDE 2-7/8" CASING.; CEMENT AT 5' IN SURFACE CASING. TOP OFF BRADENHEAD AND CASING. INSTALL P&A MARKER PLATE. R/D RIG AND CEMENT EQUIP. **RIG RELEASED @ 13:00 ON 9/9/2024.** DEMOB RIG AND EQUIP. **BLM REP KEN CHRISTENSEN ON LOCATION TO WITNESS**

WELL WAS PLUGGED AND ABANDONED ON 9/9/2024.



Lindrith, United States
87029
Sep 17, 2024 at 10:56 AM

Released to Imaging: 9/23/2024 4:13:26 PM

⚠ DEMO MODE

Timestamp Camera

Experience the PRO version to
eliminate watermarks



From: Rennick, Kenneth G <krennick@blm.gov>
Sent: Saturday, September 7, 2024 11:25 AM
To: John LaMond; Kuehling, Monica, EMNRD; Rikala, Ward, EMNRD; Kade, Matthew H
Cc: Farmington Regulatory Techs; Clay Padgett; Lee Murphy; Rustin Mikeska; Matt Gustamantes - (C); Lucero, Virgil S; Porch, Dustin T; jaredbenally@jicarillaoga.com; geramiehavens; John LaMond
Subject: Re: [EXTERNAL] P&A Revision Request for Hilcorp's JICARILLA BR B 13 (API # 3003905697)

CAUTION: External sender. DO NOT open links or attachments from UNKNOWN senders.

To confirm, the BLM finds the procedure appropriate.

From: John LaMond <jlamond@hilcorp.com>
Sent: Friday, September 6, 2024 6:37:39 PM
To: Rennick, Kenneth G <krennick@blm.gov>; Kuehling, Monica, EMNRD <monica.kuehling@emnrd.nm.gov>; Rikala, Ward, EMNRD <Ward.Rikala@emnrd.nm.gov>; Kade, Matthew H <mkade@blm.gov>
Cc: Farmington Regulatory Techs <FarmingtonRegulatoryTechs@hilcorp.com>; Clay Padgett <cpadgett@hilcorp.com>; Lee Murphy <lmurphy@hilcorp.com>; Rustin Mikeska <rmikeska@hilcorp.com>; Matt Gustamantes - (C) <Matt.Gustamantes@hilcorp.com>; Lucero, Virgil S <vlucero@blm.gov>; Porch, Dustin T <dporch@blm.gov>; jaredbenally@jicarillaoga.com <jaredbenally@jicarillaoga.com>; geramiehavens <geramiehavens@jicarillaoga.com>; John LaMond <jlamond@hilcorp.com>
Subject: RE: [EXTERNAL] P&A Revision Request for Hilcorp's JICARILLA BR B 13 (API # 3003905697)

Good afternoon Kenny,

Per our conversation, after perforating @ 1,422', we were unsuccessful at establishing an injection rate.

Moving forward, Hilcorp received verbal approval from the BLM to perform the following:

- PLUG #3: 6sx of Class G Cement (15.8 PPG, 1.15 yield); NAC Top @ 1,372':
 - Pump a 6 sack balanced cement plug inside the 2-7/8" casing (est. **TOC @ +/- 1,272'** & est. **BOC @ +/- 1,472'**). This will cover the squeeze perms @ 1,422'.
 - WOC & Tag
- The remainder of the P&A procedure will be executed as previously approved.

Please let me know if you have any questions.

Thanks,

John LaMond

Operations Engineer – Technical Services
Hilcorp Energy Company
1111 Travis
Houston, TX 77002
346-237-2210 (Office)

832-754-9692 (Cell)

jlamond@hilcorp.com

From: Rennick, Kenneth G <krennick@blm.gov>

Sent: Friday, September 6, 2024 1:46 PM

To: John LaMond <jlamond@hilcorp.com>; Kuehling, Monica, EMNRD <monica.kuehling@emnrd.nm.gov>; Rikala, Ward, EMNRD <Ward.Rikala@emnrd.nm.gov>; Kade, Matthew H <mkade@blm.gov>

Cc: Farmington Regulatory Techs <FarmingtonRegulatoryTechs@hilcorp.com>; Clay Padgett <cpadgett@hilcorp.com>; Lee Murphy <lmurphy@hilcorp.com>; Rustin Mikeska <rmikeska@hilcorp.com>; Matt Gustamantes - (C) <Matt.Gustamantes@hilcorp.com>; Lucero, Virgil S <vlucero@blm.gov>; Porch, Dustin T <dporch@blm.gov>; jaredbenally@jicarillaoga.com; geramiehavens <geramiehavens@jicarillaoga.com>; John LaMond <jlamond@hilcorp.com>

Subject: Re: [EXTERNAL] P&A Revision Request for Hilcorp's JICARILLA BR B 13 (API # 3003905697)

CAUTION: External sender. DO NOT open links or attachments from UNKNOWN senders.

To confirm, the BLM finds the procedure appropriate.

From: John LaMond <jlamond@hilcorp.com>

Sent: Friday, September 6, 2024 12:28:42 PM

To: Kuehling, Monica, EMNRD <monica.kuehling@emnrd.nm.gov>; Rennick, Kenneth G <krennick@blm.gov>; Rikala, Ward, EMNRD <Ward.Rikala@emnrd.nm.gov>; Kade, Matthew H <mkade@blm.gov>

Cc: Farmington Regulatory Techs <FarmingtonRegulatoryTechs@hilcorp.com>; Clay Padgett <cpadgett@hilcorp.com>; Lee Murphy <lmurphy@hilcorp.com>; Rustin Mikeska <rmikeska@hilcorp.com>; Matt Gustamantes - (C) <Matt.Gustamantes@hilcorp.com>; Lucero, Virgil S <vlucero@blm.gov>; Porch, Dustin T <dporch@blm.gov>; jaredbenally@jicarillaoga.com <jaredbenally@jicarillaoga.com>; geramiehavens <geramiehavens@jicarillaoga.com>; John LaMond <jlamond@hilcorp.com>

Subject: RE: [EXTERNAL] P&A Revision Request for Hilcorp's JICARILLA BR B 13 (API # 3003905697)

Good afternoon Kenny,

Per our conversation, after perforation @ 2,610', we were unsuccessful at establishing an injection rate.

Moving forward, Hilcorp received verbal approval from the BLM to perform the following:

- PLUG #2: 6sx of Class G Cement (15.8 PPG, 1.15 yield); OJO Top @ 2,560':
 - Pump a 6 sack balanced cement plug inside the 2-7/8" casing (est. **TOC @ +/- 2,460'** & est. **BOC @ +/- 2,660'**). This will cover the squeeze perfs @ 2,610'.
 - WOC & Tag
- The remainder of the P&A procedure will be executed as previously approved.

Please let me know if you have any questions.

Thanks,

John LaMond

Operations Engineer – Technical Services

Hilcorp Energy Company

1111 Travis

Houston, TX 77002

346-237-2210 (Office)

832-754-9692 (Cell)

jlamond@hilcorp.com

From: Kuehling, Monica, EMNRD <monica.kuehling@emnrd.nm.gov>

Sent: Thursday, September 5, 2024 3:31 PM

To: Rennick, Kenneth G <krennick@blm.gov>; John LaMond <jlamond@hilcorp.com>; Rikala, Ward, EMNRD <Ward.Rikala@emnrd.nm.gov>; Kade, Matthew H <mkade@blm.gov>

Cc: Farmington Regulatory Techs <FarmingtonRegulatoryTechs@hilcorp.com>; Clay Padgett <cpadgett@hilcorp.com>; Lee Murphy <lmurphy@hilcorp.com>; Rustin Mikeska <rmikeska@hilcorp.com>; Matt Gustamantes - (C) <Matt.Gustamantes@hilcorp.com>; Lucero, Virgil S <vlucero@blm.gov>; Porch, Dustin T <dporch@blm.gov>; jaredbenally@jicarillaoga.com; geramiehavens@jicarillaoga.com

Subject: RE: [EXTERNAL] P&A Revision Request for Hilcorp's JICARILLA BR B 13 (API # 3003905697)

CAUTION: External sender. DO NOT open links or attachments from UNKNOWN senders.

NMOCD approves for record only

Monica Kuehling
Compliance Officer Supervisor
Deputy Oil and Gas Inspector
New Mexico Oil Conservation Division
North District
Office Phone: 505-334-6178 ext. 123
Cell Phone: 505-320-0243
Email - monica.kuehling@emnrd.nm.gov

From: Rennick, Kenneth G <krennick@blm.gov>

Sent: Thursday, September 5, 2024 2:29 PM

To: John LaMond <jlamond@hilcorp.com>; Kuehling, Monica, EMNRD <monica.kuehling@emnrd.nm.gov>; Rikala, Ward, EMNRD <Ward.Rikala@emnrd.nm.gov>; Kade, Matthew H <mkade@blm.gov>

Cc: Farmington Regulatory Techs <FarmingtonRegulatoryTechs@hilcorp.com>; Clay Padgett <cpadgett@hilcorp.com>; Lee Murphy <lmurphy@hilcorp.com>; Rustin Mikeska <rmikeska@hilcorp.com>; Matt Gustamantes - (C) <Matt.Gustamantes@hilcorp.com>; Lucero, Virgil S <vlucero@blm.gov>; Porch, Dustin T <dporch@blm.gov>; jaredbenally@jicarillaoga.com; geramiehavens@jicarillaoga.com

Subject: Re: [EXTERNAL] P&A Revision Request for Hilcorp's JICARILLA BR B 13 (API # 3003905697)

To confirm, the BLM finds the proposed procedure appropriate.

Page 1 of 14

From: John LaMond <jlamond@hilcorp.com>

Sent: Thursday, September 5, 2024 2:13:27 PM

To: Kuehling, Monica, EMNRD <monica.kuehling@emnrd.nm.gov>; Rennick, Kenneth G <krennick@blm.gov>; Rikala, Ward, EMNRD <Ward.Rikala@emnrd.nm.gov>; Kade, Matthew H <mkade@blm.gov>

Cc: Farmington Regulatory Techs <FarmingtonRegulatoryTechs@hilcorp.com>; Clay Padgett <cpadgett@hilcorp.com>; Lee Murphy <lmurphy@hilcorp.com>; Rustin Mikeska <rmikeska@hilcorp.com>; Matt Gustamantes - (C) <Matt.Gustamantes@hilcorp.com>; Lucero, Virgil S <vlucero@blm.gov>; Porch, Dustin T <dporch@blm.gov>;

jaredbenally@jicarillaoga.com <jaredbenally@jicarillaoga.com>; geramiehavens <geramiehavens@jicarillaoga.com>

Subject: RE: [EXTERNAL] P&A Revision Request for Hilcorp's JICARILLA BR B 13 (API # 3003905697)

Good afternoon Kenny,

After perforating @ 2,840', we were unsuccessful at establishing an injection rate.

Therefore, Hilcorp requests the following adjustments to the approved procedure:

- RIH w/ work string & tag CIBP @ 2,966'.
- PLUG #1: 8sx of Class G Cement (15.8 PPG, 1.15 yield); PC Perfs @ 3,218' | PC Top @ 3,215' | FRD Top @ 3,026' | KRD Top @ 2,870':
 - Pump an 8 sack balanced cement plug inside the 2-7/8" casing (est. **TOC @ +/- 2,700'** & est. **BOC @ +/- 2,966'**). This will cover the squeeze perfs @ 2,840'.
 - WOC & Tag
- PLUG #2: 64sx of Class G Cement (15.8 PPG, 1.15 yield); OJO Top @ 2,560':
 - Perforate squeeze holes @ **2,610'**. Establish an injection rate.
 - RIH w/ 2-7/8" CICR & set @ **2,600'**. Establish an injection rate
 - Pump 23sx of cement in the 2-7/8" casing X 7-7/8" open hole annulus (est. **TOC @ +/- 2,520'** & est. **BOC @ +/- 2,610'**). Continue pumping 36sx of cement in the 2-7/8" casing X 8-3/4" open hole annulus (est. **TOC @ +/- 2,410'** & est. **BOC @ +/- 2,520'**). Pump an additional 1 sack of cement beneath the 2-7/8" CICR (est. **TOC @ +/- 2,600'** & est. **BOC @ +/- 2,610'**). Sting out of retainer, pump a 4 sack balanced cement plug on top of the CICR. (est. **TOC @ +/- 2,460'** & est. **BOC @ +/- 2,600'**). WOC for 4 hrs, tag TOC w/ work string. *Note cement plug lengths and volumes account for excess
- The remainder of the P&A procedure will be executed as previously approved.

Please let me know if you have any questions.

Thanks,

John LaMond

Operations Engineer – Technical Services

Hilcorp Energy Company

1111 Travis

Houston, TX 77002

346-237-2210 (Office)

832-754-9692 (Cell)

jlamond@hilcorp.com

From: Kuehling, Monica, EMNRD <monica.kuehling@emnrd.nm.gov>

Sent: Thursday, September 5, 2024 2:59 PM

To: Rennick, Kenneth G <krennick@blm.gov>; John LaMond <jlamond@hilcorp.com>; Rikala, Ward, EMNRD <Ward.Rikala@emnrd.nm.gov>; Kade, Matthew H <mkade@blm.gov>

Cc: Farmington Regulatory Techs <FarmingtonRegulatoryTechs@hilcorp.com>; Clay Padgett <cpadgett@hilcorp.com>; Lee Murphy <lmurphy@hilcorp.com>; Rustin Mikeska <rmikeska@hilcorp.com>; Matt Gustamantes - (C) <Matt.Gustamantes@hilcorp.com>; Lucero, Virgil S <vlucero@blm.gov>; Porch, Dustin T <dporch@blm.gov>; jaredbenally@jicarillaoga.com; geramiehavens <geramiehavens@jicarillaoga.com>

Subject: RE: [EXTERNAL] P&A Revision Request for Hilcorp's JICARILLA BR B 13 (API # 3003905697)

CAUTION: External sender. DO NOT open links or attachments from UNKNOWN senders.

NMOCD approves for record only

Thank you

Monica Kuehling
Compliance Officer Supervisor
Deputy Oil and Gas Inspector
New Mexico Oil Conservation Division
North District
Office Phone: 505-334-6178 ext. 123
Cell Phone: 505-320-0243
Email - monica.kuehling@emnrd.nm.gov

From: Rennick, Kenneth G <krennick@blm.gov>
Sent: Thursday, September 5, 2024 1:07 PM
To: John LaMond <jlamond@hilcorp.com>; Kuehling, Monica, EMNRD <monica.kuehling@emnrd.nm.gov>; Rikala, Ward, EMNRD <Ward.Rikala@emnrd.nm.gov>; Kade, Matthew H <mkade@blm.gov>
Cc: Farmington Regulatory Techs <FarmingtonRegulatoryTechs@hilcorp.com>; Clay Padgett <cpadgett@hilcorp.com>; Lee Murphy <lmurphy@hilcorp.com>; Rustin Mikeska <rmikeska@hilcorp.com>; Matt Gustamantes - (C) <Matt.Gustamantes@hilcorp.com>; Lucero, Virgil S <vlucero@blm.gov>; Porch, Dustin T <dporch@blm.gov>; jaredbenally@jicarillaoga.com; geramiehavens <geramiehavens@jicarillaoga.com>
Subject: Re: [EXTERNAL] P&A Revision Request for Hilcorp's JICARILLA BR B 13 (API # 3003905697)

To confirm, the BLM finds the updated procedure appropriate.

Get [Outlook for iOS](#)

From: John LaMond <jlamond@hilcorp.com>
Sent: Thursday, September 5, 2024 12:53:54 PM
To: Kuehling, Monica, EMNRD <monica.kuehling@emnrd.nm.gov>; Rennick, Kenneth G <krennick@blm.gov>; Rikala, Ward, EMNRD <Ward.Rikala@emnrd.nm.gov>; Kade, Matthew H <mkade@blm.gov>
Cc: Farmington Regulatory Techs <FarmingtonRegulatoryTechs@hilcorp.com>; Clay Padgett <cpadgett@hilcorp.com>; Lee Murphy <lmurphy@hilcorp.com>; Rustin Mikeska <rmikeska@hilcorp.com>; Matt Gustamantes - (C) <Matt.Gustamantes@hilcorp.com>; Lucero, Virgil S <vlucero@blm.gov>; Porch, Dustin T <dporch@blm.gov>; jaredbenally@jicarillaoga.com <jaredbenally@jicarillaoga.com>; geramiehavens <geramiehavens@jicarillaoga.com>
Subject: RE: [EXTERNAL] P&A Revision Request for Hilcorp's JICARILLA BR B 13 (API # 3003905697)

Good afternoon Kenny,

Attached is the CBL that was run today (9/5/2024) on the Jicarilla BR B 13.

Per our conversation, we were unsuccessful at establishing an injection rate below the CICR @ 2,976'. We then set the CIBP @ 2,966' and ran the CBL.

Based on the results of the CBL, Hilcorp received verbal approval from the BLM to make the following adjustments to the approved NOI:

- Perforate squeeze holes @ **2,840'**. Establish an injection rate.
- RIH w/ 2-7/8" CICR & set @ **2,830'**. Establish an injection rate
- PLUG #1: 130sx of Class G Cement (15.8 PPG, 1.15 yield); PC Perfs @ 3,218' | PC Top @ 3,215' | FRD Top @ 3,026' | KRD Top @ 2,870' | OJO Top @ 2,560':

- Pump 82sx of cement in the 2-7/8" casing X 7-7/8" open hole annulus (est. **TOC @ +/- 2,520'** & est. **BOC @ +/- 2,840'**). Continue pumping 36sx of cement in the 2-7/8" casing X 8-3/4" open hole annulus (est. **TOC @ +/- 2,410'** & est. **BOC @ +/- 2,520'**). Pump an additional 1 sack of cement beneath the 2-7/8" CICR (est. **TOC @ +/- 2,830'** & est. **BOC @ +/- 2,840'**). Sting out of retainer, pump an 11 sack balanced cement plug on top of the CICR. (est. **TOC @ +/- 2,460'** & est. **BOC @ +/- 2,830'**). WOC for 4 hrs, tag TOC w/ work string. *Note cement plug lengths and volumes account for excess
- This plug replaces the previously approved PLUG #1 & PLUG #2
- The remainder of the P&A procedure will be executed as previously approved.

Please let me know if you have any questions.

Thanks,

John LaMond

Operations Engineer – Technical Services
Hilcorp Energy Company
1111 Travis
Houston, TX 77002
346-237-2210 (Office)
832-754-9692 (Cell)
jlamond@hilcorp.com

From: Kuehling, Monica, EMNRD <monica.kuehling@emnrd.nm.gov>

Sent: Thursday, September 5, 2024 7:54 AM

To: Rennick, Kenneth G <krennick@blm.gov>; John LaMond <jlamond@hilcorp.com>; Rikala, Ward, EMNRD <Ward.Rikala@emnrd.nm.gov>; Kade, Matthew H <mkade@blm.gov>

Cc: Farmington Regulatory Techs <FarmingtonRegulatoryTechs@hilcorp.com>; Clay Padgett <cpadgett@hilcorp.com>; Lee Murphy <lmurphy@hilcorp.com>; Rustin Mikeska <rmikeska@hilcorp.com>; John LaMond <jlamond@hilcorp.com>; Matt Gustamantes - (C) <Matt.Gustamantes@hilcorp.com>; Lucero, Virgil S <vlucero@blm.gov>; Porch, Dustin T <dporch@blm.gov>; jaredbenally@jicarillaoga.com; geramiehavens <geramiehavens@jicarillaoga.com>

Subject: RE: [EXTERNAL] P&A Revision Request for Hilcorp's JICARILLA BR B 13 (API # 3003905697)

CAUTION: External sender. DO NOT open links or attachments from UNKNOWN senders.

Approved for record

Thank you

Monica Kuehling
Compliance Officer Supervisor
Deputy Oil and Gas Inspector
New Mexico Oil Conservation Division
North District
Office Phone: 505-334-6178 ext. 123
Cell Phone: 505-320-0243
Email - monica.kuehling@emnrd.nm.gov

From: Rennick, Kenneth G <krennick@blm.gov>

Sent: Wednesday, September 4, 2024 5:40 PM

To: John LaMond <jlamond@hilcorp.com>; Kuehling, Monica, EMNRD <monica.kuehling@emnrd.nm.gov>; Rikala, Ward, EMNRD <Ward.Rikala@emnrd.nm.gov>; Kade, Matthew H <mkade@blm.gov>

Cc: Farmington Regulatory Techs <FarmingtonRegulatoryTechs@hilcorp.com>; Clay Padgett <cpadgett@hilcorp.com>; Lee Murphy <lmurphy@hilcorp.com>; Rustin Mikeska <rmikeska@hilcorp.com>; John LaMond <jlamond@hilcorp.com>; Matt Gustamantes - (C) <Matt.Gustamantes@hilcorp.com>; Lucero, Virgil S <vlucero@blm.gov>; Porch, Dustin T <dporch@blm.gov>; jaredbenally@jicarillaoga.com; geramiehavens <geramiehavens@jicarillaoga.com>

Subject: Re: [EXTERNAL] P&A Revision Request for Hilcorp's JICARILLA BR B 13 (API # 3003905697)

The BLM finds the proposed procedure appropriate.

Get [Outlook for iOS](#)

From: John LaMond <jlamond@hilcorp.com>

Sent: Wednesday, September 4, 2024 5:08:54 PM

To: Kuehling, Monica, EMNRD <monica.kuehling@emnrd.nm.gov>; ward.rikala@emnrd.nm.gov <ward.rikala@emnrd.nm.gov>; Rennick, Kenneth G <krennick@blm.gov>; Kade, Matthew H <mkade@blm.gov>

Cc: Farmington Regulatory Techs <FarmingtonRegulatoryTechs@hilcorp.com>; Clay Padgett <cpadgett@hilcorp.com>; Lee Murphy <lmurphy@hilcorp.com>; Rustin Mikeska <rmikeska@hilcorp.com>; John LaMond <jlamond@hilcorp.com>; Matt Gustamantes - (C) <Matt.Gustamantes@hilcorp.com>

Subject: [EXTERNAL] P&A Revision Request for Hilcorp's JICARILLA BR B 13 (API # 3003905697)

This email has been received from outside of DOI - Use caution before clicking on links, opening attachments, or responding.

Good afternoon Kenny,

Hilcorp moved onto the JICARILLA BR B 13 (API # 3003905697) P&A this morning.

Per our discussion, Hilcorp attempted to RIH w/ a 2-7/8" CIBP and tagged high at 1,674'. We then TIH w/ work string & bit & hard tagged @ 3,226'. We reamed on the way out of the hole. We then TIH w/ the same CIBP & tagged @ 3,000' and could not get deeper.

Based on our conversation, Hilcorp received verbal approval from the BLM to make the following adjustments to the approved procedure:

- Set a **2-7/8" CICR @ 2,976'**
- **Pump PLUG #1: 9sx of Class G Cement (15.8 PPG, 1.15 yield); PC Perfs @ 3,218' | PC Top @ 3,215' | FRD Top @ 3,026':**
 - Pump 9sx of cement beneath the 2-7/8" CICR (est. **TOC @ +/- 2,976'** & est. **BOC @ +/- 3,265'**). Wait on Cement for 4 hours, tag TOC w/ work string. *Note cement plug lengths & volumes account for excess.
 - Verbal approval was given from BLM that if Hilcorp is unable to establish an injection rate below the CICR @ 2,976', Hilcorp can forego pumping cement below CICR @ 2,976'.
- Set a **2-7/8" CIBP @ 2,966'** (No cement will be pumped on top of CIBP @ 2,966' due to anticipated KRD perfs to be shot at ~2,920' for PLUG #2).
- The remainder of the procedure will be executed based on the updated formation tops stated in the COAs in the approved NOI. Those changes are reflected in the attached procedure.
- Please see the revised procedure attached and below. The updated Proposed P&A wellbore schematic is also attached.

I have attached the approved P&A NOI, as well as an updated procedure based on the COAs in the approved NOI.



HILCORP ENERGY COMPANY
JICARILLA BR B 13
P&A NOI

API #: 3003905697

JOB PROCEDURES

1. Contact NMOCD and BLM (where applicable) 24 hours prior to MIRU.
2. Hold pre-job safety meeting. Verify cathodic is off. Comply with all NMOCD, BLM, and HEC safety and environmental regulations.
3. MIRU service rig and associated equipment; NU and test BOP.
4. Set a **2-7/8" CICR** at **+/- 2,976'** to isolate the **PC Perfs**.
5. PU & TIH w/ work string to **+/- 2,976'**. Sting into CICR & establish injection.
6. **PLUG #1: 9sx of Class G Cement (15.8 PPG, 1.15 yield); PC Perfs @ 3,218' | PC Top @ 3,215' | FRD Top @ 3,026'**:
 Pump 9sx of cement beneath the 2-7/8" CICR (est. **TOC @ +/- 2,976'** & est. **BOC @ +/- 3,265'**). Wait on Cement for 4 hours, tag TOC w/ work string. *Note cement plug lengths & volumes account for excess.
7. Set a **2-7/8" CIBP** at **+/- 2,966'**.
8. Load the well as needed. Pressure test the casing above the plug to **560 psig**.
9. RU Wireline. Run CBL. Record Top of Cement. All subsequent plugs below are subject to change pending CBL results.
10. TOOH w/ work string. TIH & perforate squeeze holes @ **+/- 2,920'**. RIH w/ **2-7/8" CICR** and set CICR @ **+/- 2,870'**. TIH w/ work string & sting into CICR. Establish injection.
11. **PLUG #2: 152sx of Class G Cement (15.8 PPG, 1.15 yield); KR Top @ 2,870' | OJO Top @ 2,560'**:
 Pump 102sx of cement in the 2-7/8" casing X 7-7/8" open hole annulus (est. **TOC @ +/- 2,520'** & est. **BOC @ +/- 2,920'**). Continue pumping 36sx of cement in the 7/8" casing X 8-3/4" open hole annulus (est. **TOC @ +/- 2,410'** & est. **BOC @ +/- 2,520'**). Pump an additional 2sx of cement beneath the 2-7/8" CICR (est. **TOC @ +/- 2,870'** & est. **BOC @ +/- 2,920'**). Sting out of retainer, pump a 12 sack balanced cement plug on top of the CICR. (est. **TOC @ +/- 2,460'** & est. **BOC @ +/- 2,870'**). WOC for 4 hrs, tag TOC w/ work string. *Note cement plug lengths and volumes account for excess.
12. TOOH w/ work string. TIH & perforate squeeze holes @ **+/- 1,422'**. RIH w/ **2-7/8" CICR** and set CICR @ **+/- 1,372'**. TIH w/ work string & sting into CICR. Establish injection.
13. **PLUG #3: 70sx of Class G Cement (15.8 PPG, 1.15 yield); NAC Top @ 1,372'**:
 Pump 65sx of cement in the 2-7/8" casing X 8-3/4" open hole annulus (est. **TOC @ +/- 1,222'** & est. **BOC @ +/- 1,422'**). Pump an additional 2sx of cement beneath the 2-7/8" CICR (est. **TOC @ +/- 1,372'** & est. **BOC @ +/- 1,422'**). Sting out of retainer, pump a 3 sack balanced cement plug on top of the CICR. (est. **TOC @ +/- 1,272'** & est. **BOC @ +/- 1,372'**). WOC for 4 hrs, tag TOC w/ work string. *Note cement plug lengths and volumes account for excess.
14. TOOH w/ work string. TIH and perforate squeeze holes @ **+/- 200'**. Establish circulation.
15. **PLUG #4: 74sx of Class G Cement (15.8 PPG, 1.15 yield); Surf. Casing Shoe @ 150'**:
 Pump 17sx of cement in the 2-7/8" casing X 8-3/4" open hole annulus (est. **TOC @ +/- 150'** & est. **BOC @ +/- 200'**). Continue pumping 51sx of cement in the 7/8" casing X 9-5/8" casing annulus (est. **TOC @ +/- 0'** & est. **BOC @ +/- 150'**). Pump a 6 sack balanced cement plug inside the 2-7/8" casing (est. **TOC @ +/- 0'** & est. **BOC @ +/- 200'**). WOC for 4 hrs, tag TOC w/ work string. *Note cement plug lengths and volumes account for excess.
16. ND BOP, cut off casing below casing flange. Top off cement in surface casing annulus, if needed. Install a P&A marker with cement to comply with regulations down, move off location, cut off anchors, and restore location.

Please let me know if you have any questions.

Thanks,

John LaMond

Operations Engineer – Technical Services
 Hilcorp Energy Company

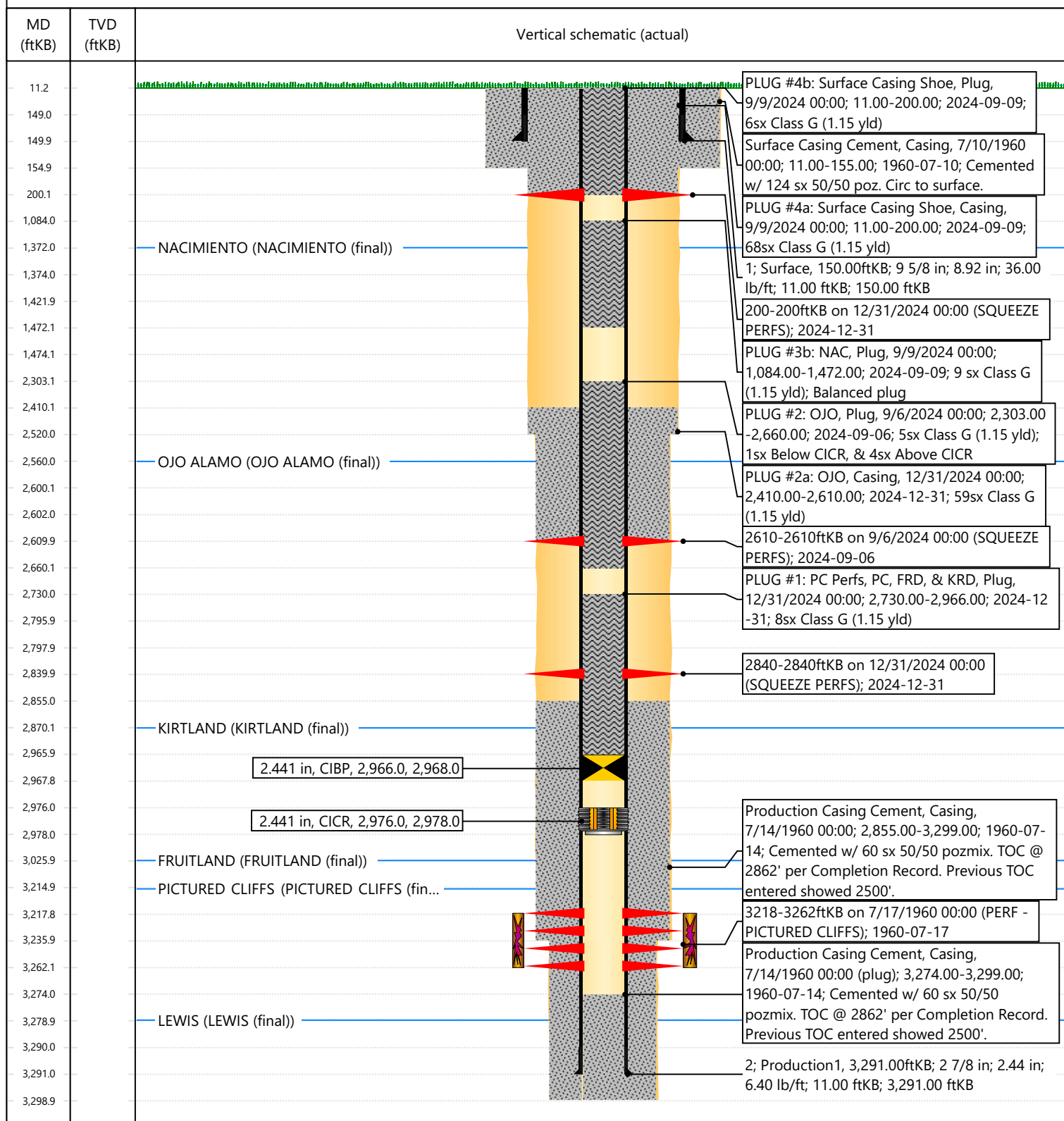


Current Schematic - Version 3

Well Name: JICARILLA BR B #13

API / UWI 3003905697	Surface Legal Location 034-025N-004W-P	Field Name PC	Route 1413	State/Province NEW MEXICO	Well Configuration Type Vertical
Ground Elevation (ft) 6,971.00	Original KB/RT Elevation (ft) 6,982.00	Tubing Hanger Elevation (ft)	RKB to GL (ft) 11.00	KB-Casing Flange Distance (ft)	KB-Tubing Hanger Distance (ft)
Tubing Strings					
Run Date	Set Depth (ftKB)	String Max Nominal OD (in)	String Min Nominal ID (in)	Weight/Length (lb/ft)	Original Spud Date

Original Hole [Vertical]



District I
1625 N. French Dr., Hobbs, NM 88240
Phone:(575) 393-6161 Fax:(575) 393-0720
District II
811 S. First St., Artesia, NM 88210
Phone:(575) 748-1283 Fax:(575) 748-9720
District III
1000 Rio Brazos Rd., Aztec, NM 87410
Phone:(505) 334-6178 Fax:(505) 334-6170
District IV
1220 S. St Francis Dr., Santa Fe, NM 87505
Phone:(505) 476-3470 Fax:(505) 476-3462

State of New Mexico
Energy, Minerals and Natural Resources
Oil Conservation Division
1220 S. St Francis Dr.
Santa Fe, NM 87505

CONDITIONS

Action 384362

CONDITIONS

Operator: HILCORP ENERGY COMPANY 1111 Travis Street Houston, TX 77002	OGRID: 372171
	Action Number: 384362
	Action Type: [C-103] Sub. Plugging (C-103P)

CONDITIONS

Created By	Condition	Condition Date
mkuehling	approved for record only	9/23/2024
mkuehling	well plugged 9/9/2024	9/23/2024