

Well Name: POKER LAKE	Well Location: T24S / R30E / SEC 21 / SWNE / 32.2050281 / -103.8839389	County or Parish/State: EDDY / NM
Well Number: 41	Type of Well: OIL WELL	Allottee or Tribe Name:
Lease Number: NMLC068431	Unit or CA Name:	Unit or CA Number:
US Well Number: 3001520933	Operator: XTO PERMIAN OPERATING LLC	

Accepted for record only BLM approval required NMOCD 9/25/24 KF

Subsequent Report

Sundry ID: 2806031

Type of Submission: Subsequent Report	Type of Action: Plug and Abandonment
Date Sundry Submitted: 08/09/2024	Time Sundry Submitted: 03:07
Date Operation Actually Began: 04/30/2024	

Actual Procedure: XTO Permian Operating LLC., has P&A'd the above mentioned well per the attached P&A summary report and WBD. Two CBL's also submitted.

SR Attachments

Actual Procedure

- XTO_Poker_Lake_Unit__041_3001520933_20240603_SCBL_GR_CCL_20240809150444.pdf
- XTO_Poker_Lake_Unit_041_3001520933_20240610_SCBL_GR_CCL_20240808133115.pdf
- PLU_41_P_A_Summary_Rpt__WBD_20240808132813.pdf

Well Name: POKER LAKE	Well Location: T24S / R30E / SEC 21 / SWNE / 32.2050281 / -103.8839389	County or Parish/State: EDDY / NM
Well Number: 41	Type of Well: OIL WELL	Allottee or Tribe Name:
Lease Number: NMLC068431	Unit or CA Name:	Unit or CA Number:
US Well Number: 3001520933	Operator: XTO PERMIAN OPERATING LLC	

Operator

I certify that the foregoing is true and correct. Title 18 U.S.C. Section 1001 and Title 43 U.S.C. Section 1212, make it a crime for any person knowingly and willfully to make to any department or agency of the United States any false, fictitious or fraudulent statements or representations as to any matter within its jurisdiction. Electronic submission of Sundry Notices through this system satisfies regulations requiring a

Operator Electronic Signature: SHERRY MORROW	Signed on: AUG 09, 2024 03:06 PM
Name: XTO PERMIAN OPERATING LLC	
Title: Regulatory Analyst	
Street Address: 6401 HOLIDAY HILL ROAD BLDG 5	
City: MIDLAND	State: TX
Phone: (432) 218-3671	
Email address: SHERRY.MORROW@EXXONMOBIL.COM	

Field

Representative Name:		
Street Address:		
City:	State:	Zip:
Phone:		
Email address:		

BLM Point of Contact

BLM POC Name: JAMES A AMOS	BLM POC Title: Acting Assistant Field Manager
BLM POC Phone: 5752345927	BLM POC Email Address: jamos@blm.gov

Disposition: Accepted	Disposition Date: 08/13/2024
Signature: James A Amos	

Poker Lake Unit 041
API Number 3001520933
P&A Summary Report

4/30/24: MIRU.

5/1/24: BD. SDFN.

5/2/24: PT tubing 34 Bbls/500 psi test good & bleed down LD polished rod, unseat pump, LD 16' pony rods and 1 rod. PU polished rod & attempt to hot water tubing, load w/ 2 Bbls, pressure up to 500 psi. unable to pump down tubing. Bleed down well, LD polished rod, RU rod equipment, attempt to LD rods. SDFN.

5/3/24: MIRU hot oiler, Pump 200 Bbls w/ Dn98 @200 Degrees down csg. max psi 150 psi Bleed off csg. 150 psi to 0 psi. SDFN.

5/4/24: LD polished Rod. Lay down rods. LD 106 (1") 93 (7/8") 98 (3/4") Rods and Mech Pump. MIRU attempt to pup down tubing. Load tubing w/ 6 Bbls HW w/ Dn98 pressure up to 500 and walked up to 2500 psi. Lost 50 psi in 5 minutes. Bleed off pressure CWI. SDFN.

5/5/24: MIRU WL. PT Lubricator 500 psi. RIH w/ 1-9/16 hole punch gun, shot holes @ 7,486'. WL POOH RDMO. Pump 30 Bbls HW w/ Dn-98 down tubing to verify tbg, pump through, fallow by 2 drums Xylene & 60 Bbls HW w/ Dn98. SWI and SDFN.

5/6/24: Back off locking pins. Attempt to pull hanger, max pull 80K tubing hanger didn't move. SWI and SDFN.

5/7/24: Pull 80k and work it up to 110k max pull. Repeat process several times. Unsuccessful. MIRU HO pump 85 Bbls HW @ 1/4 bpm @ 240* & pour down 10 gl ice cold water down tubing. Pull on hanger 3 times 60k 75k and 85k hanger pull free SW 50k. Remove 2-7/8 x 9-5/8 hanger. PU 8' x 2-7/8 L-80 sub. PU test hanger, ID was 2-3/8 w/check valve in place had 1 xo only. Talk about it decision made PU same 2-7/8 hanger & land it. while setting on the slips. Hand thinking on 2-3/8 hanger, forgot about 2-7/8 that was installed PU 2-3/8 check valve and attempt to install by hand on 2-7/8 hanger dropping check valve down tubing. NU 11"x 9-5/8" BOP PT and chart. RU work floor tubing tongs Lay down 5 jts. SDFN.

5/8/24: Continued LD production string. 2-7/8 J-55 EUE #6.5 Lay down a total of 229 jts 9-5/8 x 2-7/8 TAC 8 jts 4' sub & SN w/ dip tube GS & 1 MJ Bull plug. a total of 242 jts Recover check valve. SDFN.

5/14/24: MU 8-1/2 x 4-1/2 Reg BIT, 5" Bit sub, 4-1/2 Reg (B) x 2-7/8 IF (B). 4-1/8 XO 2-7/8 IF(P) x 2-3/8 IF(B) 6 DC 3-1/2 & XO 2-3/8IF (P) x 2-7/8 EUE (B) Held hole point. MIRU RU. PU 170 jts 2-7/8 L-80 #6.5 EUE WS @ 5,751'. Rack 70 jts WS 2-7/8 #6.5 L-80 Drift & Tally. SDFN.

5/15/24: Held PTSB. MI & continued PU 2-7/8 L-80 #6.5 EUE. Tag @ 7,558'. PU & lay down jt #225 NU Muller Head 11' x 3k MIRU Power Swivel. PU jt #225. Establish pump rate @ 3bpm @ 0 psi 370 Bbls fill & broke circulation @ 900 psi Muller rubber started leaking. Stop Ops and replace rubber and continued circulating, Easy on down, tag @ 7,558' RPM @ 60 torque @ 7 to 800 wash down 11' of sand and scale, Make conection w/ jt # 226 wash down 12' more a total of 23' formation sand scale and bell sand and some shavings from CIBP on returns. tag CIBP @ 7,581' w/ RPM's @ 55 Torque @ 600/900 w/ 3k on it. Up weight 58k down 54k set down 51k. drill time on CIBP 45 minutes. Bbl in 3bpm @ 500 psi Bbl out about 2.5 Circulate bottoms up 50 Bbls RD PS lay down 4 jts IOT @ 7,473 Top perf. @ 7,498'. SWI SDFN.

5/16/24: PU 4 lts L-80 #6.5 EUE WS. RU PS Fill csg and brake circulation w/ 180 FW. Establish reverse circulation @ 3bpm @ 900 psi. Easy on down, tag CIBP @ 7,581' w/ RPM set @ 64 Torque @ 600/1100 w/ 3/6k set down. Continued DO on CIBP. made 7" cutting quit coming back w/ 3bbls in 2.5 bbls out psi

@ 700 psi. Try different ways get bit to break CIBP from 8-10-12k on it, torque @ 750/850 ft/lb RPM's @ 30 to 80 unsuccessful. Pull up Circulate Bottoms up due to wind, 50 Bbls. Recovering at the in some pieces of cast iron RD power swivel. Lay down 4 jts SWI SDFN due to wind and rain.

5/17/24: Continued Drilling out CIBP throughout the day w/ different torque & RPM's Reverse & Forward circulation & set down weights. 30/85 RPM's 600/1100 ft/lb Dry drill to 3.5 bpm reverse & forward circulation. RD Power Swivel & LD 2 jts 2-7/8 L-80 EUE #6.5. Remove muller head. POOH. Stant back 40 stands. SDFWE.

5/22/24: Tbg & Csg on vacuum. OW. Continued TOOH w/ 72 stands, 3 stands 3-1/2 DC & 8-1/2 Bit. MU new 8-1/2 Bit. 5" Bit Sub xo 3 stands 3-1/2 DC PU 6 more DC 3-1/2 TIH w/42 stands. SDFN.

5/23/24: TIH w/ 21 stds. TIH w/ rest of stands. 69 stahds. LD 6 jts TIH w/ 3 stds a total of 219 jts in. NU 11" x 3k Muller head. RU PS. RU. PS w/ jt # 220 tag @ 7581' DO. ops. EPR @ 3.5 bpm @ 0psi 100 Bbls in, set 4k w/ RPM's @ 64 ft/lb torque @ 6/900 broke circulation w/ 278 Bbls @ 500 psi. 3.5 bbls in 2.5 bbls out. 1.5 hrs made 1" pull up and circulate bottoms up. got cast iron on returns. no rubber yet. LD swivel & 4 jts pull above perf @ 7498' EOT @ 7463' CWI SDFN.

5/24/24: TIH w/ 4 jts 2-7/8 L-80 #6.5 EUE WS. RU PS. Continued DO on CIBP. Initial PR @ 4 bbls @ 0 psi. pump 100 and Dry drill till got circulation. broke circ. w/ 158 Bbls. psi @ 700 psi. Try different ways get bit to break CIBP from 4k to 12k sometimes 15k on it, torque @ 850/1100 ft/lb RPM's @ 30 to 80. Dry drill. fower circ. Reverse circ. drill thru CIBP rubber. still on bottom cone of CIBP. PU & circulate bottoms up. LD PS. POOH w/ 4 jts above perf @ 7498'. EOT @ 7463'. SDFN.

5/25/24: PU 4 jts. RU PS. Rec. EPR @ 3 bpm @ 0 psi RPM's @ 64 a total of 100 bbls in, Tag @ 7582.5 set 8k Dry drill Torque @ 700/1050 broke circulation w/202 Bbls. psi @ 600 Drill for 2 hrs. Weights @ 8-12 & sometimes @ 15k. RPM's @ 64 - 80 ft/lb Torque @ 700/1050 3 Bbls 2.5 Bbls out. No solids on returns. Pump started acting up pull up circulate Bottoms up. LD PS & 4 jts to top of perf. @ 7498'. EOT @ 7463'. SDFWE.

5/28/24: TIH w/ 4 jnts 2-7/8 EUE L80 Tbg. MIRU P. Swivel. Tagged CIBP w/ 220 jnts @ 7582.5' FS. Began pumping down Csg (reverse) at a rate of 4 BPM. Load wellbore and broke circulation w/220 Bbls. Lowered pump rate to 3.5 BPM @ 500psi and began DO CIBP w/ 60 RPM's on power swivel @ 1500ft/lbs and setting 6 - 8 points on bit. Got rubber and metal shavings on returns. Made 18" of hole. Circulated wellbore clean (2 Btms/up). Start: 7582.5' End: 7584' Made: 16" Returns: Metal shavings and rubber. Weight: PU 66k lbs, Neutral 63k lbs, set 63k lbs. RDMO PS. TOH & LD w/ 4 jnts of 2-7/8 Tbg. EOT/Bit w/216 jnts + BHA @ 7463' FS. Top perf @ 7494'. SDFN.

5/29/24: TIH w/ 4 jnts 2-7/8 EUE L80 Tbg. MIRU P. Swivel. Tagged CIBP w/ 220 jnts @ 7582.5' FS. Began pumping down Csg (reverse) at a rate of 4 BPM. Load wellbore and broke circulation w/200 Bbls. Lowered pump rate to 3.5 BPM @ 500psi and began DO CIBP w/ 60 RPM's on power swivel @ 1500ft/lbs and setting 6 - 8 points on bit. Got rubber and metal shavings on returns. Made 14" of hole. Circulated wellbore clean (2 Btms/up). Start: 7584' End: 7585' Made: 14" Returns: Metal shavings and rubber. Weight: PU 66k lbs, Neutral 63k lbs, set 63k lbs. RDMO PS. RU Tbg equip. TOH & LD w/172 jnts of 2-7/8 Tbg. EOT/Bit w/48 jnts + BHA @ 1965" FS. Top perf @ 7494'. Installed caps on csg valves & Tbg. Secured well. SDFN.

5/30/24: Continued TOH & stood back w/ 44 jnts 2-7/8 EUE L80 Tbg. LD BHA: 12 (3-1/2) Drill collars, XO, But-sub & 8-1/2 tricone bit. Bit looked ok. Note: Load 6 DC's on one trailer and 6 DC's on a different trailer (2 different trailers). Load power swivel on trailer. PU kelly hose. MO location. Nipple down Mueller head. Load it on trailer & sent BHA and handling tools back to yard. MIRU Tech. Shot to get fluid level. FL @ 4,080'. RDMO Tech. TIH w/ 233 jnts 2-7/8 EUE L80 Tbg. Tagged @ 7585' FS. LD 1 jn. EOT @ 7580' FS, 5' above CIBP. Secured well. SDFN.

5/31/24: MIRU Cement equipment. Pressured test lines to 1k psi. Opened up well. Pumped 200 sxs class H (37.7 Bbls) slurry. Estimated TOC ~+ 6000'. TOH & stood back w/ 232 jnts 2-7/8 EUE L80 WS

Tbg. TIH w/ 184 jnts 2-7/8 EUE L80 Tbg w/ a regular 2-7/8 collar on bttm. EOT @ ~6000'. Secured well. SDFN.

6/1/24: Load well w/200 Bbls of FW w/ TIW & BOP open. Wait for water to settle and top off well. SDFWE.

6/3/24: OW held hole point. TIH. TOC @ 6443' w/ 10' in on jt #203 LD jt #203 and Pump down tbg to verify tbg 1 bbl broke circulation @ 0 psi. Tbg clear. POOH w/ 86 stands a total of 100 stands on derrick & LD 33 jts. MIRU WL. RIH w/ CBL form 6643' to Surface. RDMO WL. SDFN.

6/4/24: WO CBL confirmation. TIH w/ 100 stands PU 1 jts EOT @ 6600.40. Connect hose on tbg & csg. brake circulation, pump cmt plug 6600' to CTOC @ 6163'. LD 13 jts POOH 20 stands EOT @ 4902' reverse circulate 2X bottoms up 60 Bbls to verify tbg clean. SDFN.

6/5/24: TIH. tag TOC @ 6115'. Spot 98 Bbls SJM. LD 41 jts to 4804'. Pump 65 sks plug 4800' to 4600'. 205' FoF 10 bbl mix FW 15 bbl slurry 26 Bbls displacement CTOC @ 4606' LD to next plug @ 3920' Pump 190 sks plug 3920 to 3454' 600' FoF 28.5 bbl mix FW 44.6 bbl slurry 20 Bbls displacement CTOC @ 3320' LD 21 jts stood back 12 stands EOT @ 2508' Reverse Circulate 30 Bbls to verify tbg clear. SDFN.

6/6/24: OW. TIH. TOC @ 3364' LD to 1300' 82 jts. PT 13-3/8 csg. to 300 psi for 10 min. test was good. Bleed off psi. POOH w/ 10 stands. SDFN.

6/7/24: RIH to 500' set PKR and attempt to release it for functioning test purposes and it was unsuccessful. push it up chain of command. got authorization to shear off PKR. PKR Shear. POOH. Held PTSB/JSA. Hole point w/ WL & Rig crew. RIH 1jt & 6' tubing sub. MIRU WL RIH and perforate @ 1300' POOH. Established circulation, down 9-5/8" up 13-3/8" @ 1.5 bpm @ 500 psi. RDMO WL. TIH w/ 9-5/8" cmt retainer to 700' Pump thru to make sure it was clear. Set it and PT to 500 test was good. Bleed off psi Held hole point. Squeeze Ops. 393 sks total. 700' to 1300' = 600 foot of fill in 9-5/8" 190 sks 28.5 bbl mix FW 44.6 bbls Slurry 1300' to 800' 203 sks in 13-3/8" 30.5 bbl mix FW 47.7 bbls Slurry 4Bbls tbg displ. Sting out and POOH LD stinger. SD till Monday.

6/10/24: RIH w/CBL Tools, RIH to 100' Calibrate tools then RIH to top of Cement Retainer 714'. Start Logging out of hole, No visual of any Cement in the 13 3/8. Finish CBL to surface, WLU engineer sent it out to Engineers wait on orders Wait on Orders. BLM and XOM Engineers look over Bond Log and decide what to do. Decided to Drill out Cement Retainer Rig Down WLU Secure well. SWI SDFN.

6/11/24: RIH w/10jts 2 7/8 L-80 tag retainer on 10th jt 15' in called Plug @707' lay 1 jt down. Spot in PS then make up Valve, Pick up PS make it up. Make up 1jt Set COFO, get Ready to Break Cir. Re-tighten head with weight. Break Circulation with .25bbls Reverse Cir. Then start Millin Ops, Torque @ 1500psi/1200ft/lbs Free Rotation 450ft/lbs RPM's 60. Start Drilling w/ 5pts end w/ 6pts on Retainer and Cir. 2.5bbl/min @ 350psi. Made 1.5" on Drilling Ops. SWI Secure well SDFN.

6/12/24: Open well Static, SWC's, Set COFO w/PS Limits Break Cir. 2.5bbls/min @350psi. Get free spin torque on PS (450ft/lbs) and set RPMs (60rpms). Start on Milling/Drilling Ops. Tbg Weight 10,000#s setting no more than 8pts on Retainer. Stay Checking returns. No Rubber in returns yet. Made 3.5" today 5" total since we started Drilling. Secure Well SWI SDFN.

6/13/24: Open well Static, Set COFO w/PS Limits, SWC's, Break Cir. 2.5bbls/min @350psi. Get free spin torque on PS (400ft/lbs) and set RPMs (68rpms). Start on Milling/Drilling Ops. Tbg Weight 12,000#s setting no more than 8pts on Retainer. Stay Checking returns. Made 1.5" today 6.5" total since we started Drilling. No returns coming back and no hole progress, Cir. 2 Btms up 10bbls Lay 1jts down Break PS Lay it down. Secure Well SWI SDFN.

6/14/24: Open well Static, POOH w/tbg 9jts and stand back DC's - 12, 3.50", Break 9 5/8" Bit Sub and Bit. Bit was worn down. Make up New 9 5/8th bit With Bit sub. make up to DC's then RIH w/ DC's and 9

jts TBG Pick up PS Set COFO with PS Parameters then Install Washington Rubber. Ready for DO OP's Break Cir. Hole full, then Start on Mill OPs, Setting 8pts on Plug, 70 RPMS Pumping 2.5bbls/min @ 350psi. Mad 2" hole had rubber o-rings in returns along w/ metal shavings. Secure Well SWI SDFN.

6/15/24: Open well Static, SWC's, Set COFO w/ PS Limits Break Cir 2.5bbls/min @350psi. Get free spin tourque on PS (400ft/lbs) and set RPMs (70rpms). Start on Milling/Drilling Ops. Tbg Weight 10,000#s setting no more than 8pts on Retainer. Stay Checking returns. 8:45 Started getting rubber back in returns. End of Day still had no cement in returns. Secure Well SWI SDFN.

6/16/24: Open well Static, SWC's, Set COFO w/ PS Limits Break Cir. 3bbls/min @400psi. Get free spin tourque on PS (400ft/lbs) and set RPMs (74rpms). Start on Milling/Drilling Ops. Tbg Weight 10,000#s setting no more than 8pts on Retainer. Stay Checking returns. Good returns till got to cone on retainer and had to work on it to get bit to bite. End of Day still had no cement in returns. Secure Well SWI SDFN.

6/17/24: OW. LD PS w/ 1 jt to set COFO. Continued DO cmt Ret. DO 13" through Retainer and 45" into cmt a total of 58" Pull up circulate bottoms up CWI SDFN.

6/18/24: OW. Cont. DO cmt. ERCR @ 2.5 bpm @ 350 psi. RPM's @ 64 SDW 6-8k 10' total cmt drill. PU circ bottoms up. POOH 5 stands & 6 stnds DC. LD bit. CWI SDFN.

6/19/24: MIRU WL. RIH w/ CBL. tag TOC @ 725' CBL to surf. No cmt. RDMO WL. PU & MU Drag Bit TIH to 725' w/ 8.5 Drag bit 12 DC 3.5 & 10 jts RU Power Swivel ERC @ 2.5 bpm @ 350 psi RPM's @ 64. DO a total of 4'.6" EOB @ 734' Circulate bottoms up RD PS. LD 10 jts 2-7/8 EUE WS & 12 DC 3-1/2. 8-1/2 drag bit. Load & PT 13-5/8 csg. 1Bbl/300 psi test good. BO psi CWI. SDFN.

6/20/24: MIRU WL RIH to 725' & perforated POOH. EIR @ 2 bpm @ 100 psi. RDMO WL. Pump Dye tracer @ 2bpm @ 100 psi 93 Bbls in Dye on surface. Calculated Bbls 97 csg/ann. RD work floor. ND 11"x 3k BOP. Installed 9-5/8 hanger. 2-7/8 x 2' sub on top of hanger w/ 2 valves.

6/27/24: Surf/Surf 725' Squeeze holes 415 sks total FOF-725'. Mix 62 bbls FW. Total Bbls 97 Slurry 230 sks in 9-5/8" (34.6 Bbls mix FW) 54 Bbls slurry 184 sks in 13-3/8" (27.6 Bbls mix FW) 43.3 Bbls slurry. Verify cmt at Surf. Flush 1/2 Bbl FW 200 psi left on 9-5/8" RD cmt pump and rig.

7/24/24: MIRU. Spot 200 sks of Class C cmt down the conductor Csg. Unable to TTOC at first. TTOC (fresh) after spot @ 55'. SDFN.

7/25/24: Spot and RU equipment 1" 86 sks Class C CMT to surface. RDMO.

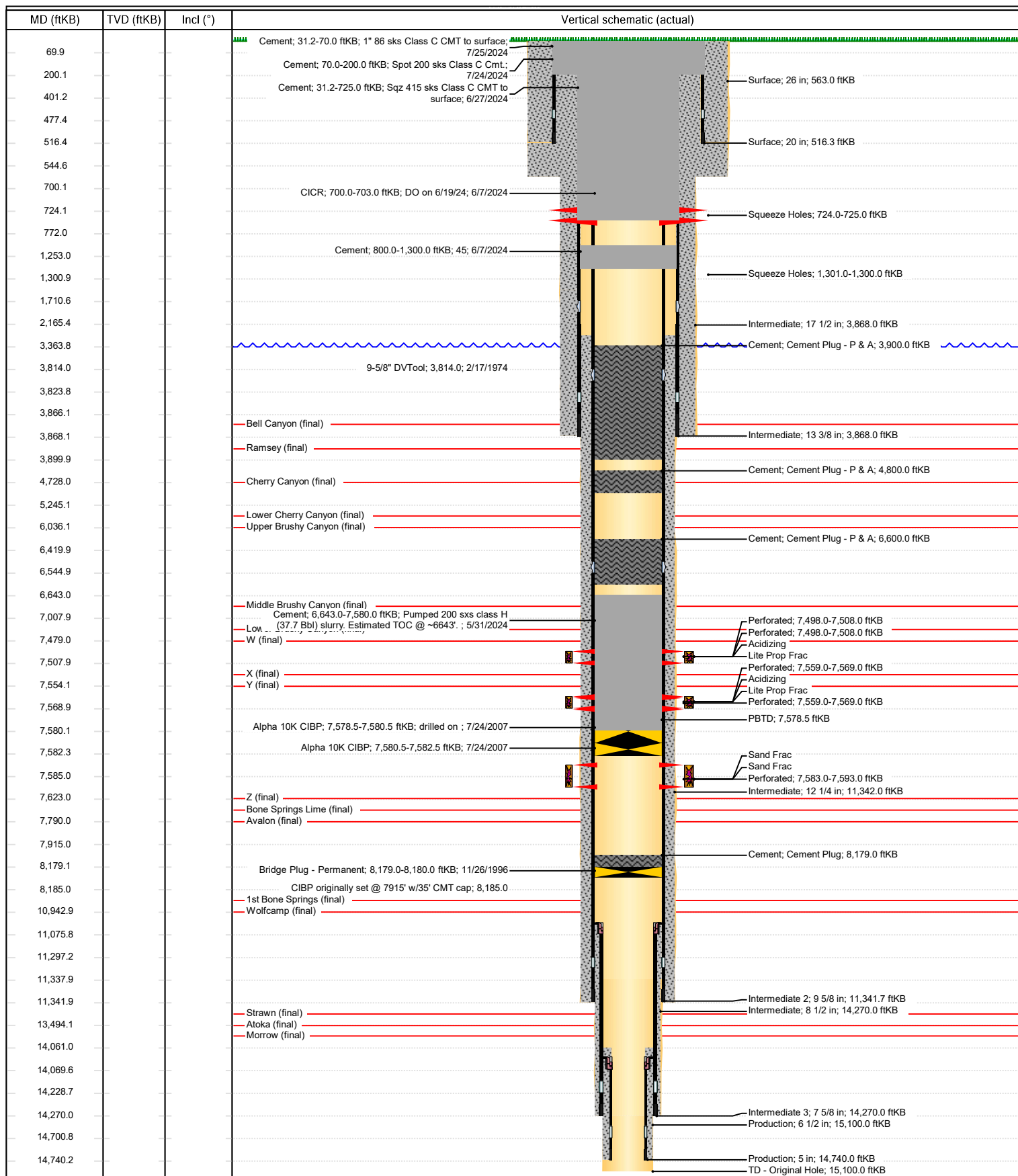
7/29/24: WH cutoff and DHM set.



Schematic - Vertical with Perfs

Well Name: Poker Lake Unit 041

API/UWI 3001520933	SAP Cost Center ID 1135591001	Permit Number	State/Province New Mexico	County Eddy
Surface Location T24S-R30E-S21	Spud Date 9/30/1973 00:00	Original KB Elevation (ft) 3,391.25	Ground Elevation (ft) 3,360.00	KB-Ground Distance (ft) 31.25



District I
1625 N. French Dr., Hobbs, NM 88240
Phone:(575) 393-6161 Fax:(575) 393-0720

District II
811 S. First St., Artesia, NM 88210
Phone:(575) 748-1283 Fax:(575) 748-9720

District III
1000 Rio Brazos Rd., Aztec, NM 87410
Phone:(505) 334-6178 Fax:(505) 334-6170

District IV
1220 S. St Francis Dr., Santa Fe, NM 87505
Phone:(505) 476-3470 Fax:(505) 476-3462

State of New Mexico
Energy, Minerals and Natural Resources
Oil Conservation Division
1220 S. St Francis Dr.
Santa Fe, NM 87505

CONDITIONS

Action 373401

CONDITIONS

Operator: XTO PERMIAN OPERATING LLC. 6401 HOLIDAY HILL ROAD MIDLAND, TX 79707	OGRID: 373075
	Action Number: 373401
	Action Type: [C-103] Sub. Plugging (C-103P)

CONDITIONS

Created By	Condition	Condition Date
kfortner	Accepted for record only BLM approval required NMOCD 9/25/24 KF CBL on file DHM set 7/29/24	9/25/2024