

Well Name: JAMES RANCH UNIT	Well Location: T23S / R31E / SEC 17 / SENW / 32.3062904 / -103.801936	County or Parish/State: EDDY / NM
Well Number: 55	Type of Well: OIL WELL	Allottee or Tribe Name:
Lease Number: NMLC071988B	Unit or CA Name: CONSL DWRM FMN PA ABC	Unit or CA Number: NMNM70965K
US Well Number: 3001527589	Operator: XTO PERMIAN OPERATING LLC	

Accepted for record only BLM approval required NMOCD 9/25/24 KF

CBL on file

Subsequent Report

DHM in Place 8/13/24

Sundry ID: 2807121

Type of Submission: Subsequent Report

Date Sundry Submitted: 08/15/2024

Date Operation Actually Began: 06/29/2024

Type of Action: Plug and Abandonment

Time Sundry Submitted: 01:27

Actual Procedure: XTO Permian Operating LLC., has P&A'd the above mentioned well per the attached P&A summary report and WBD. CBL also submitted.

SR Attachments

Actual Procedure

- James\_Ranch\_Unit\_055\_RCBL\_7\_14\_24\_20240815132058.pdf
- James\_Ranch\_Unit\_055\_\_P\_A\_Summ\_Rpt\_and\_WBD\_20240815132014.pdf

Received by OCD: 8/19/2024 5:24:35 AM

Page 2 of 6

Well Name: JAMES RANCH UNIT	Well Location: T23S / R31E / SEC 17 / SENW / 32.3062904 / -103.801936	County or Parish/State: EDDY / NM
Well Number: 55	Type of Well: OIL WELL	Allottee or Tribe Name:
Lease Number: NMLC071988B	Unit or CA Name: CONSL DWRM FMN PA ABC	Unit or CA Number: NMNM70965K
US Well Number: 3001527589	Operator: XTO PERMIAN OPERATING LLC	

Operator

I certify that the foregoing is true and correct. Title 18 U.S.C. Section 1001 and Title 43 U.S.C. Section 1212, make it a crime for any person knowingly and willfully to make to any department or agency of the United States any false, fictitious or fraudulent statements or representations as to any matter within its jurisdiction. Electronic submission of Sundry Notices through this system satisfies regulations requiring a

Operator Electronic Signature: SHERRY MORROW	Signed on: AUG 15, 2024 01:23 PM
Name: XTO PERMIAN OPERATING LLC	
Title: Regulatory Analyst	
Street Address: 6401 HOLIDAY HILL ROAD BLDG 5	
City: MIDLAND	State: TX
Phone: (432) 218-3671	
Email address: SHERRY.MORROW@EXXONMOBIL.COM	

Field

Representative Name:		
Street Address:		
City:	State:	Zip:
Phone:		
Email address:		

BLM Point of Contact

BLM POC Name: JAMES A AMOS	BLM POC Title: Acting Assistant Field Manager
BLM POC Phone: 5752345927	BLM POC Email Address: jamos@blm.gov

Disposition: Accepted	Disposition Date: 08/16/2024
Signature: James A Amos	

James Ranch Unit 055  
API 3001527589  
Summary Report for P&A

6/29/24: MIRU.

6/30/24: Unseat rod pump, TOH LD 7 ea 1" rods. Pumped 70 bbls FW w/DN 98 down csg @ .5 bpm @ 220 degrees. Csg went on vacuum. RD from csg and RU to tbg and pumped 60 bbls FW w/DN 98 @ .5 bpm @ 220 degrees. TOH LD rods. (1 ea polished rod, 72 ea 1" rods, 48 ea 7/8" rods, 12 ea 1" rods and rod pump. Total rods 258). Secured well. SDFN.

7/1/24: Pump 70 bbls FW w/DN98 @ 220 degrees down tbg @ .5 bpm. ND b1 flange. NU FT and PT BOP. PT blinds and pipe rams to 2800 on high side and 250 on low side. PT good and charted. Unset TAC. TOH std back and tally 198 jnts 2-7/8 L80 tbg 6.5#. LD TAC, Perf sub and Bull Plug. Tbg tally 6474.2 tbg avg 32.69. SDFN.

7/2/24: TIH 198 jnts 2-7/8 L80 tbg. PU TIH 1 jnt and TOH std back 198 jts 2-7/8 L80 tbg. Tally and make up BHA (tri cone bit 4.75 x .5, bit sub 3 11/16 x 2', 4 DC's 3 7/16 x 30.6 (avg), x-over 3 11/16 x 1.35 Total length 126.25. TIH 192 jts. EOT 6350'. MIRU catwalk, pipe racks, reverse pump. SDFN.

7/3/24: TIH 2 jnts 2-7/8 L80 tbg. Spot and RU PS. PU 1 jnt and 2 10' 2-7/8 L80 tbg. tag CIBP @ 6507'. Circulated down tbg up csg. Started @ 4 bpm (FW) and didn't catch psi until 30 bbls gone. Caught 500 psi and began to get gas at gas buster @ 33 bbls gone and oil @ 36 bbls gone. Stopped getting oil and circulation leveled out. Began to get FW back at pit. 2 bbls in 1.25 bbls out. Started to mill on CIBP. Began to get rubber back after 102 bbls gone. 2 bpm @ 200 psi avg circulation. Made 2 feet when the CIBP fell. We chased it for 50'. It would hang up every five feet or so. We worked it down to 6580'. Stopped pulled up and circulated 40 bbls. LD 2jnts. RD PS. TOH 20 jnts to above the perfs (5898'). SDFHWE.

7/9/24: TIH 20 jnts 2-7/8 L80 tbg. Circulated 60 bbls FW until we got returns. PU 2 jnts and worked on trying to push CIBP down. LD 2 jnts. RU PS and PU 2 jnts and tagged CIBP @ 6530'. Began mill ops. Made 2'. Circulating 2 bbls in 1.5 bbls out. Worked tbg up and down periodically. Eventually fell about 4' and lost circulation. Cont milling ops periodically working tbg over CIBP. SD. LD 2 jnts and RD PS. TOH std back 20 jnts. SDFN.

7/10/24: TOH std back 176 jnts 2-7/8 L80 tbg. Check and swap bits. PU 2 more DC's (total DC's 6). TIH 196 jnts and tagged @ 6541'. (believe we had sand fall in from perfs @ 6122'. Circulate 40 bbls FW down tbg. No returns. Tag and mill on CIBP. PU every 10 minutes and hitting CIBP. Mill with 10 pts on CIBP. Kept working tbg up and down then putting weight on it until it fell through. PU 6 jnts w/PS and never tagged. SD due to lightning (depth @ 6799'.) TOH std back 36 jnts Total jnts in the hole 166 jnts. Depth @ 5570'. SDFN.

7/11/24: TIH 71 jnts and tagged CIBP @ 7834'. LD 1 jnt and worked bit up and down for 30 minutes to make sure we cleaned up anything off the csg. TOH std back 236 jnts. LD 1 jnt. LD BHA. RDMO rev pump, PS and pit. SDFN.

7/12/24: MIRU WLU RIH set CIBP @ 7800'. POOH. RIH and dump 25' Class H CMT. POOH. RIH Dump bail 25' Class H CMT. POOH. SDFN.

7/13/24: TIH 240 jnts 2-7/8 L80 tbg and TTOC @ 7760'. TOH std back 240 jnts 2-7/8 L80 tbg. MIRU WLU. RIH set CIBP @ 6050'. POOH. RIH and make three dump bail runs. POOH RD WLU. PT CIBP to 500 psi. for 30 minutes. PT good. SDFN.

7/14/24: RCBL log from 6010'-surf.

TIH 183 jnts 2-7/8 L80 tbg and TTOC @ 6010'. Circulated 144 bbls SGM (144 bbls 10# mixed w/36 sks SG). Clean returns to pit. TOH LD 51 jnts 2-7/8 L80 tbg and std back 132 jnts. MIRU WLU. RIH TTOC @ 6009'. POOH logging CMT. RDMO WLU. SDFN.

7/15/24: TIH 183 jnts 2-7/8 L80 tbg. Wait on orders from engineering. SDFN.

7/16/24: Broke circulation w/5 bbls 10#. Swapped to Class C CMT (35 sks Class C CMT, 4.5 bbls FW Mix, 7.05 bbls Slurry Volume, FOF 296', CTOC 5704'). Displaced w/33 bbls 10# brine. TOH std back 19 jnts and LD 2 jnts 2-7/8 L80 tbg. Reverse out w/30 bbls 10# brine. WOC. TIH 173 jnts 2-7/8 L80 tbg and TTOC @ 5704'. TOH LD 44 jnts 2-7/8 L80 tbg. EOT @ 4217'. Broke circulation w/6 bbls 10# brine. Swapped to Class C CMT (45 sks Class C CMT, 6.75 bbls FW mix, 10.57 bbls Slurry Volume, FOF 447', CTOC 3770'). Displaced w/21.75 bbls 10# brine. TOH std back 20 jnts 2-7/8 L80 tbg and LD 10 jnts. Reversed out w/44 bls 10# brine. SDFN.

7/17/24: TIH 26 jnts 2-7/8 L80 tbg. Total in hole 115 jnts. TTOC @ 3779'. TOH LD 14 jnts and std back 102 jnts. MIRU WLU RIH. Perf @ 3750'. POOH TIH 112 jnts. EIR 24 bbls 10# brine. EIR good. TOH LD 112 jnts 2-7/8 L80 TBG. RD work floor and tongs. ND BOP. NU B1 flange Broke circulation w/9 bbls 10# brine. Swapped to CMT and pumped 890 sks Class C CMT to surface (FW mix 133.5 bbls, Slurry volume 209.23 bbls) got CMT at surface. Cleaned pump to pit.

7/18/24: RDMO. XTO to cut off WH and Install DHM.

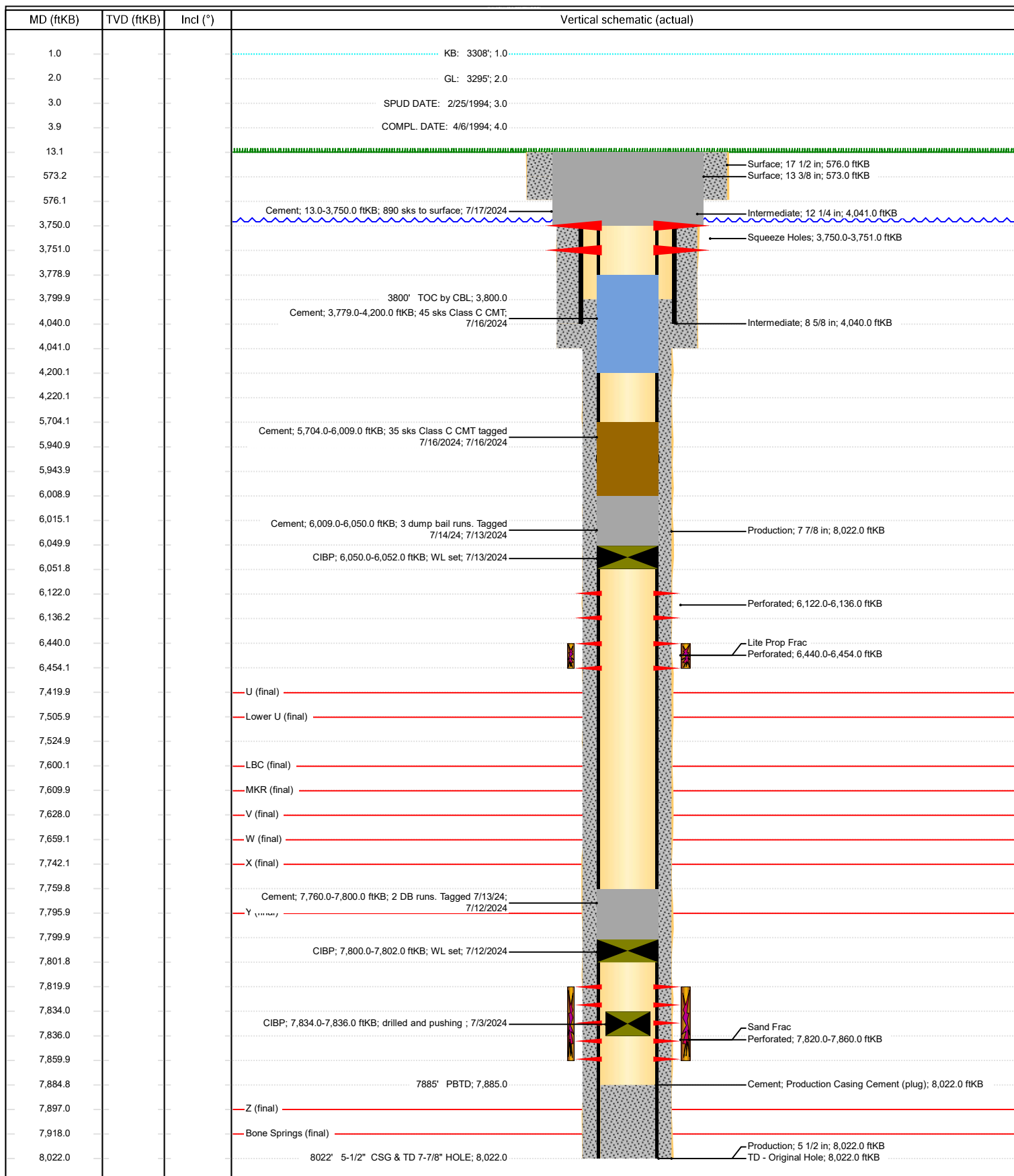
8/13/2024: Cut off WH and installed DHM.



# Schematic - Vertical with Perfs

Well Name: James Ranch Unit 055

API/UWI 3001527589	SAP Cost Center ID 1136531001	Permit Number	State/Province New Mexico	County Eddy
Surface Location T23S-R31E-S17	Spud Date 2/25/1994 16:00	Original KB Elevation (ft) 3,308.00	Ground Elevation (ft) 3,295.00	KB-Ground Distance (ft) 13.00



**District I**  
1625 N. French Dr., Hobbs, NM 88240  
Phone:(575) 393-6161 Fax:(575) 393-0720  
**District II**  
811 S. First St., Artesia, NM 88210  
Phone:(575) 748-1283 Fax:(575) 748-9720  
**District III**  
1000 Rio Brazos Rd., Aztec, NM 87410  
Phone:(505) 334-6178 Fax:(505) 334-6170  
**District IV**  
1220 S. St Francis Dr., Santa Fe, NM 87505  
Phone:(505) 476-3470 Fax:(505) 476-3462

**State of New Mexico**  
**Energy, Minerals and Natural Resources**  
**Oil Conservation Division**  
**1220 S. St Francis Dr.**  
**Santa Fe, NM 87505**

CONDITIONS

Action 374815

CONDITIONS

Operator: XTO ENERGY, INC 6401 Holiday Hill Road Midland, TX 79707	OGRID: 5380
	Action Number: 374815
	Action Type: [C-103] Sub. Plugging (C-103P)

CONDITIONS

Created By	Condition	Condition Date
kfortner	Accepted for record only BLM approval required NMOCD 9/25/24 KF CBL in file DHM in place 8/13/24	9/25/2024