

Submit a Copy To Appropriate District  
Office  
District I – (575) 393-6161  
1625 N. French Dr., Hobbs, NM 88240  
District II – (575) 748-1283  
811 S. First St., Artesia, NM 88210  
District III – (505) 334-6178  
1000 Rio Brazos Rd., Aztec, NM 87410  
District IV – (505) 476-3460  
1220 S. St. Francis Dr., Santa Fe, NM  
87505

State of New Mexico  
Energy, Minerals and Natural Resources

Form C-103  
Revised July 18, 2013

OIL CONSERVATION DIVISION  
1220 South St. Francis Dr.  
Santa Fe, NM 87505

WELL API NO. <b>30-025-07516</b>
5. Indicate Type of Lease STATE <input checked="" type="checkbox"/> FEE <input type="checkbox"/>
6. State Oil & Gas Lease No. <b>19520</b>
7. Lease Name or Unit Agreement Name <b>North Hobbs G/SA Unit</b>
8. Well Number <b>411</b>
9. OGRID Number <b>157984</b>
10. Pool name or Wildcat <b>HOBBS; GRAYBURG-SAN ANDRES</b>
11. Elevation (Show whether DR, RKB, RT, GR, etc.) <b>3658' (DF)</b>

SUNDRY NOTICES AND REPORTS ON WELLS  
(DO NOT USE THIS FORM FOR PROPOSALS TO DRILL OR TO DEEPEN OR PLUG BACK TO A DIFFERENT RESERVOIR. USE "APPLICATION FOR PERMIT" (FORM C-101) FOR SUCH PROPOSALS.)

1. Type of Well: Oil Well ☒ Gas Well ☐ Other

2. Name of Operator  
**Occidental Permian LTD**

3. Address of Operator  
**P.O. Box 4294 Houston, TX 77210-4294**

4. Well Location  
Unit Letter **A** : **330** feet from the **NORTH** line and **330** feet from the **EAST** line  
Section **32** Township **18S** Range **38E** NMPM County **LEA**

12. Check Appropriate Box to Indicate Nature of Notice, Report or Other Data

NOTICE OF INTENTION TO:

PERFORM REMEDIAL WORK ☐ PLUG AND ABANDON ☐  
TEMPORARILY ABANDON ☐ CHANGE PLANS ☐  
PULL OR ALTER CASING ☐ MULTIPLE COMPL ☐  
DOWNHOLE COMMINGLE ☐  
CLOSED-LOOP SYSTEM ☐  
OTHER: **CTI/LINER** ☒

SUBSEQUENT REPORT OF:

REMEDIAL WORK ☐ ALTERING CASING ☐  
COMMENCE DRILLING OPNS. ☐ P AND A ☐  
CASING/CEMENT JOB ☐  
OTHER: ☐

13. Describe proposed or completed operations. (Clearly state all pertinent details, and give pertinent dates, including estimated date of starting any proposed work). SEE RULE 19.15.7.14 NMAC. For Multiple Completions: Attach wellbore diagram of proposed completion or recompletion.

Objective: Run conformance liner, perform remedial cement work to bring cement to surface, and convert well to injection in existing San Andres Unitized interval.

Please see detailed planned procedure and WBDs attached.

Spud Date:

Rig Release Date:

I hereby certify that the information above is true and complete to the best of my knowledge and belief.

SIGNATURE Roni Mathew TITLE Regulatory Advisor DATE 08/28/2024

Type or print name Roni Mathew E-mail address: roni\_mathew@oxy.com PHONE: (713) 215-7827  
**For State Use Only**

APPROVED BY: \_\_\_\_\_ TITLE \_\_\_\_\_ DATE \_\_\_\_\_  
Conditions of Approval (if any): \_\_\_\_\_

**32-411 Job Plan:**

- 1) MIRU PU
- 2) POOH w/ prod. Eqpt
- 3) RIH w/ CICR & set at ~4000'
- 4) Cement squeeze existing perforations
- 5) RIH w/ packer & set at ~2300'
- 6) RU WL x Shoot squeeze holes @ 2500' x RD WL
- 7) RU cement services & circulate cement to surface
- 8) PU 6-1/8" bit. DO cement squeeze.
- 9) PU 4-3/4" bit. DO CICR & cement. CO PBTD to 4285'.
- 10) RIH with 4.0" partial liner. Land liner from ~3800'-4285'. Cement liner in place w/ ~100 sx.
- 11) RIH w/ 4.75" bit & DO to top of liner. POOH with 4.75" bit. RIH with 3-1/8" bit and CO to PBTD.  
POOH with bit.
- 12) RU WL and perforate liner from ~4060'~4267' at 3 spf 120 deg phasing.
- 13) RIH with RBP & packer. Acid stimulate new perms with ~5000 gals of 15% HCL.
  - Max rate = 4-5 BPM
- 14) Flush acid with ~200 bbls off fresh water
- 15) POOH with RBP & packer. RIH with injection equipment.
- 16) RD PU. Put well on injection.

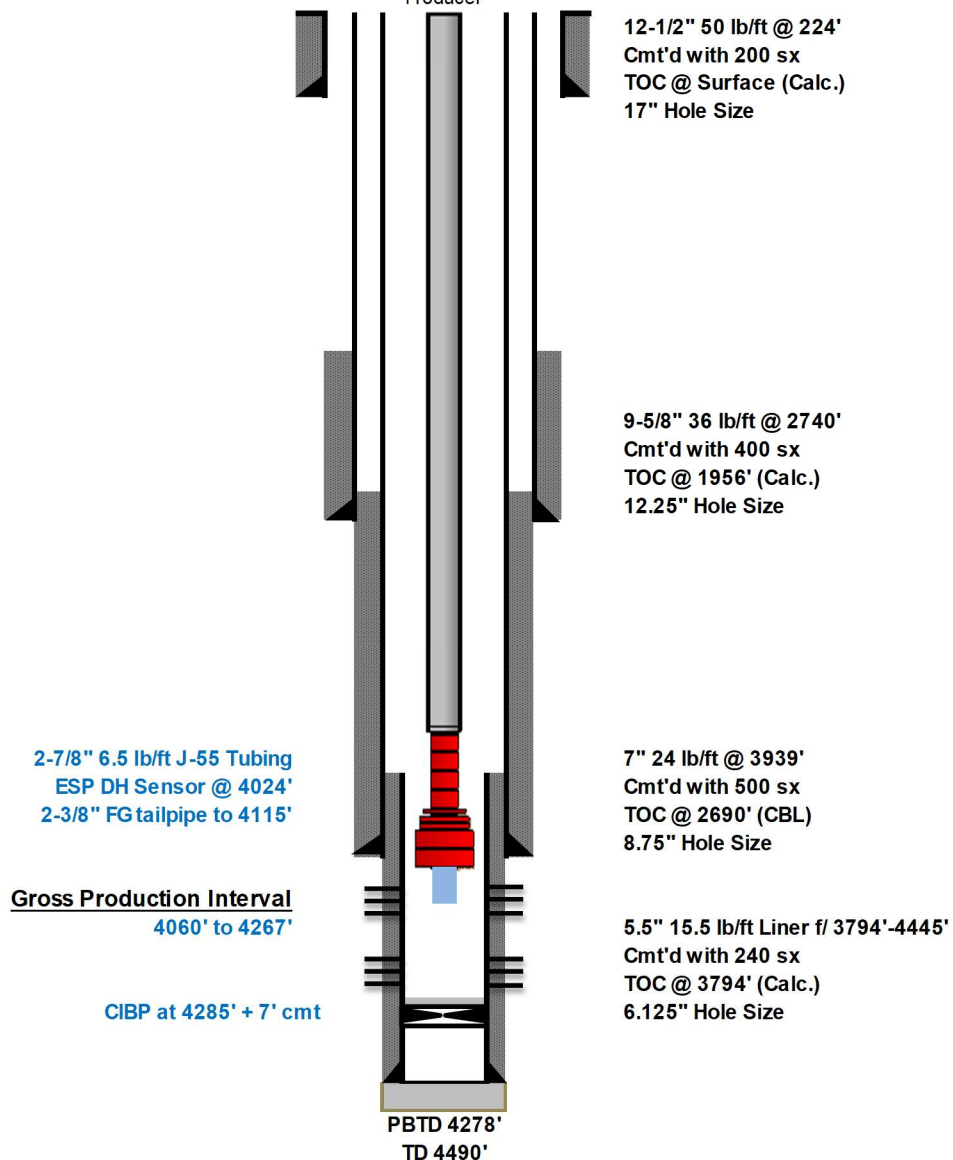


Occidental Petroleum Corporation

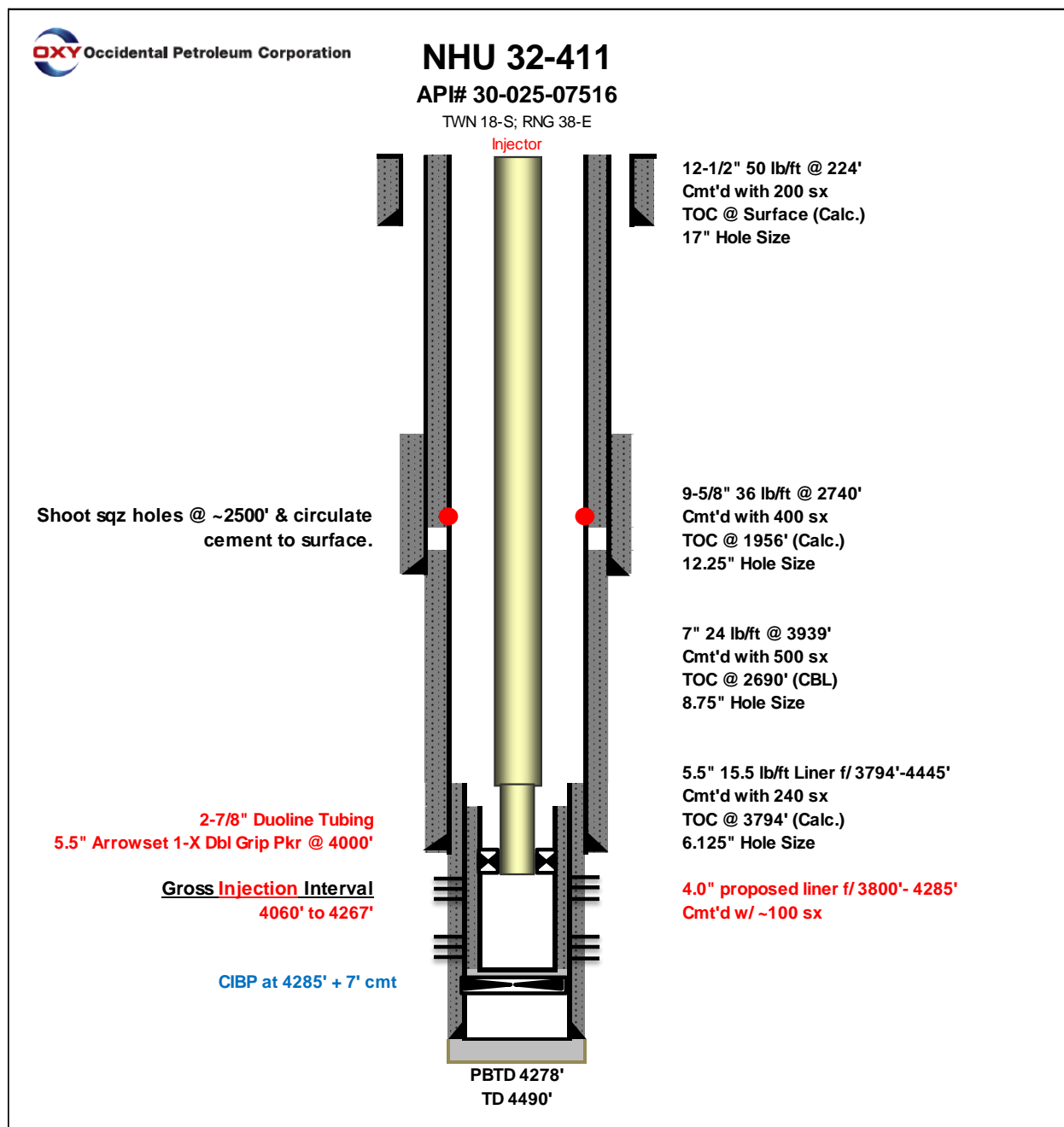
**NHU 32-411****API# 30-025-07516**

TWN 18-S; RNG 38-E

Producer



# Proposed WBD



**District I**  
1625 N. French Dr., Hobbs, NM 88240  
Phone:(575) 393-6161 Fax:(575) 393-0720  
**District II**  
811 S. First St., Artesia, NM 88210  
Phone:(575) 748-1283 Fax:(575) 748-9720  
**District III**  
1000 Rio Brazos Rd., Aztec, NM 87410  
Phone:(505) 334-6178 Fax:(505) 334-6170  
**District IV**  
1220 S. St Francis Dr., Santa Fe, NM 87505  
Phone:(505) 476-3470 Fax:(505) 476-3462

State of New Mexico  
Energy, Minerals and Natural Resources  
Oil Conservation Division  
1220 S. St Francis Dr.  
Santa Fe, NM 87505

CONDITIONS

Action 378579

CONDITIONS

Operator: OCCIDENTAL PERMIAN LTD P.O. Box 4294 Houston, TX 772104294	OGRID: 157984
	Action Number: 378579
	Action Type: [C-103] NOI Workover (C-103G)

CONDITIONS

Created By	Condition	Condition Date
anthony.harris	1. Discrepancy between surface location from recent C-102 survey data relative to historical surface location data in OCD WellFile/NOI must be resolved. For example, the C-108 application and subsequent PMX Order reflect a surface location based on recent C-102 survey data. However, that data is inconsistent with well location data in OCD wellfile and this NOI with respect to distances FNL and FEL. 2. A C-103 Subsequent report must be filed with an updated Wellbore Diagram to reflect the final well configuration. Details must include, but not be limited to the following: tubing details (size, depth, crossovers etc), packer details and setting depth, perforation details, plug details (CIBP, CICR and/or cement), perforation isolation (squeeze) details, PBTB etc. Also, if a new liner is installed or the production casing string is perforated to circulate cement to surface, those details must be reflected in the wellbore diagram.	9/25/2024