

Well Name: POKER LAKE UNIT 13-1 PC	Well Location: T24S / R29E / SEC 13 / SWNE /	County or Parish/State: /
Well Number: 167H	Type of Well: CONVENTIONAL GAS WELL	Allottee or Tribe Name:
Lease Number: NMNM05912	Unit or CA Name:	Unit or CA Number: NMNM71016X
US Well Number: 3001554014	Well Status: Drilling Well	Operator: XTO PERMIAN OPERATING LLC

Notice of Intent

Sundry ID: 2744501

Type of Submission: Notice of Intent

Type of Action: APD Change

Date Sundry Submitted: 08/03/2023

Time Sundry Submitted: 06:55

Date proposed operation will begin: 09/12/2023

Procedure Description: XTO Permian Operating, LCC. requests permission to make the following changes to the original APD: No Additional Surface Disturbance Name Change: Fr/ Poker Lake Unit 13-1 PC 166H to Poker Lake Unit 13-1 PC 167H SHL: fr/2375'FNL & 1430'FEL to 2270'FNL & 1535'FEL, NMNM05912 FTP: fr/2540'FNL & 1650'FEL to 2059'FNL & 1274'FEL, NMNM05912 LTP: fr/2318'FSL & 1650'FEL to 100'FSL & 1274'FEL, NMLC0696005 BHL: fr/2448'FSL & 1650'FEL to 50'FSL & 1274'FEL, Section 24-T24S-R29E NMLC0696005 Additionally, XTO Permian Operating, LLC. respectfully requests permission to upsize the surface, intermediate and production hole, casing, and cement based on the attached drilling program. Due to the upsize in these strings, the wellhead configuration has also changed based on the attached drilling program. Casing/Cement design per the attached drilling program. Attachments: C102 Drilling Program MBS Directional Plan

NOI Attachments

Procedure Description

Poker_Lake_Unit_13_1_PC_167H_Sundry_attachment_20230803185435.pdf

Received by OCD: 10/19/2023 4:50:24 PM

Page 2 of 18

Well Name: POKER LAKE UNIT 13-1 PC	Well Location: T24S / R29E / SEC 13 / SWNE /	County or Parish/State: /
Well Number: 167H	Type of Well: CONVENTIONAL GAS WELL	Allottee or Tribe Name:
Lease Number: NMNM05912	Unit or CA Name:	Unit or CA Number: NMNM71016X
US Well Number: 3001554014	Well Status: Drilling Well	Operator: XTO PERMIAN OPERATING LLC

Conditions of Approval

Additional

Sundry_2744501_COAs_20230915114100.pdf

Operator

I certify that the foregoing is true and correct. Title 18 U.S.C. Section 1001 and Title 43 U.S.C. Section 1212, make it a crime for any person knowingly and willfully to make to any department or agency of the United States any false, fictitious or fraudulent statements or representations as to any matter within its jurisdiction. Electronic submission of Sundry Notices through this system satisfies regulations requiring a

Operator Electronic Signature: CASSIE EVANS

Signed on: AUG 03, 2023 06:54 PM

Name: XTO PERMIAN OPERATING LLC

Title: Regulatory Analyst

Street Address: 6401 Holiday Hill Road, Bldg 5

City: MidlandState: TX

Phone: (432) 218-3671

Email address: CASSIE.EVANS@EXXONMOBIL.COM

Field

Representative Name:

Street Address:

City:State:Zip:

Phone:

Email address:

BLM Point of Contact

BLM POC Name: CHRISTOPHER WALLS

BLM POC Title: Petroleum Engineer

BLM POC Phone: 5752342234

BLM POC Email Address: cwalls@blm.gov

Disposition: Approved

Disposition Date: 09/19/2023

Signature: Chris Walls

Form C-102
Revised August 1, 2011
Submit one copy to appropriate
District Office

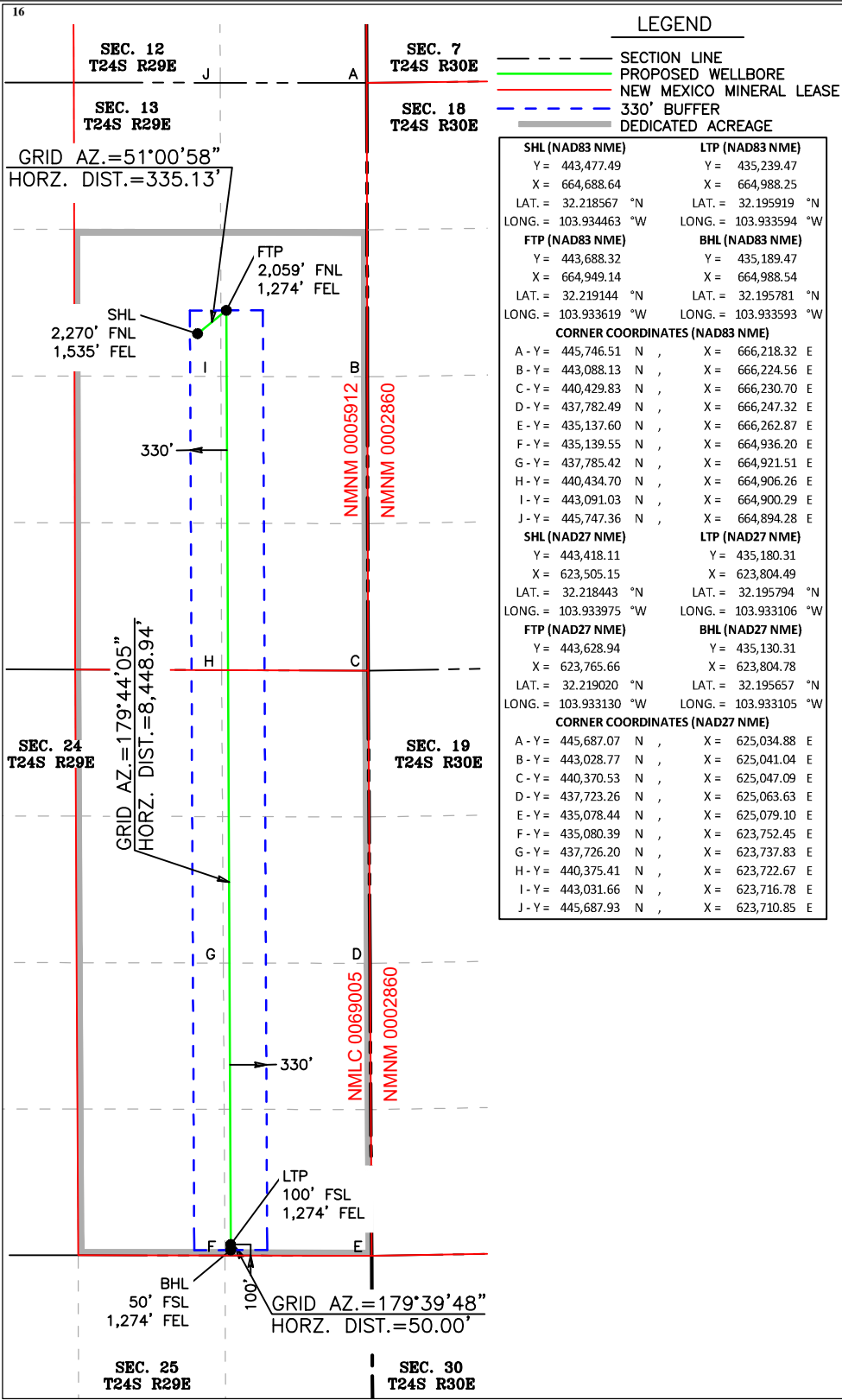
☐ AMENDED REPORT

¹ API Number 30-015	² Pool Code 98220	³ Pool Name Purple Sage; Wolfcamp
⁴ Property Code	⁵ Property Name POKER LAKE UNIT 13-1 PC	⁶ Well Number 167H
⁷ OGRID No. 373075	⁸ Operator Name XTO PERMIAN OPERATING, LLC	⁹ Elevation 3,106'

UL or lot no.	Section	Township	Range	Lot Idn	Feet from the	North/South line	Feet from the	East/West line	County
G	13	24 S	29 E		2,270	NORTH	1,535	EAST	EDDY

UL or lot no.	Section	Township	Range	Lot Idn	Feet from the	North/South line	Feet from the	East/West line	County
P	24	24 S	29 E		50	SOUTH	1,274	EAST	EDDY

¹² Dedicated Acres	¹³ Joint or Infill	¹⁴ Consolidation Code	¹⁵ Order No.
560			



A circular blue ink seal for a professional surveyor. The outer ring contains the text "TIM C. PAPPAS" at the top and "PROFESSIONAL SURVEYOR" at the bottom. The inner ring contains the text "NEW MEXICO". The center of the seal contains the license number "21209".

Certificate Number

DRILLING PLAN: BLM COMPLIANCE
(Supplement to BLM 3160-3)

XTO Energy Inc.
Poker Lake Unit 13-1 PC 167H
Projected TD: 20361' MD / 11343' TVD
SHL: 2270' FNL & 1535' FEL , Section 13, T24S, R29E
BHL: 50' FSL & 1274' FEL , Section 24, T24S, R29E
Eddy County, NM

1. Geologic Name of Surface Formation

A. Quaternary

2. Estimated Tops of Geological Markers & Depths of Anticipated Fresh Water, Oil or Gas

Formation	Well Depth (TVD)	Water/Oil/Gas
Rustler	293'	Water
Top of Salt	545'	Water
Base of Salt	3120'	Water
Delaware	3324'	Water
Brushy Canyon	5784'	Water/Oil/Gas
Bone Spring	7087'	Water
1st Bone Spring	8096'	Water/Oil/Gas
2nd Bone Spring	8931'	Water/Oil/Gas
3rd Bone Spring	10013'	Water/Oil/Gas
Wolfcamp	10372'	Water/Oil/Gas
Wolfcamp X	10404'	Water/Oil/Gas
Wolfcamp Y	10468'	Water/Oil/Gas
Wolfcamp A	10513'	Water/Oil/Gas
Wolfcamp B	10842'	Water/Oil/Gas
Wolfcamp D	11217'	Water/Oil/Gas
Wolfcamp E	11312'	Water/Oil/Gas
Target/Land Curve	11343'	Water/Oil/Gas

*** Hydrocarbons @ Brushy Canyon

*** Groundwater depth 40' (per NM State Engineers Office).

No other formations are expected to yield oil, gas or fresh water in measurable volumes. The surface fresh water sands will be protected by setting 9.625 inch casing @ 393' (152' above the salt) and circulating cement back to surface. The intermediate will isolate from the top of salt down to the next casing seat by setting 7.625 inch casing at 10537' and cemented to surface. A 6.75 inch curve and 6.75 inch lateral hole will be drilled to 20361 MD/TD and 5.5 inch production casing will be set at TD and cemented back up in the intermediate shoe (estimated TOC 10237 feet).

3. Casing Design

Hole Size	Depth	OD Csg	Weight	Grade	Collar	New/Used	SF Burst	SF Collapse	SF Tension
12.25	0' – 393'	9.625	40	J-55	BTC	New	1.21	16.02	40.08
8.75	0' – 4000'	7.625	29.7	RY P-110	Flush Joint	New	1.94	2.52	1.78
8.75	4000' – 10537'	7.625	29.7	HC L-80	Flush Joint	New	1.41	1.74	2.09
6.75	0' – 10437'	5.5	20	RY P-110	Semi-Premium	New	1.26	1.64	2.16
6.75	10437' - 20361'	5.5	20	RY P-110	Semi-Flush	New	1.26	1.51	2.16

- XTO requests the option to utilize a spudder rig (Atlas Copco RD20 or Equivalent) to set and cement surface casing per this Sundry
- XTO requests to not utilize centralizers in the curve and lateral
- 7.625 Collapse analyzed using 50% evacuation based on regional experience.
- 5.5 Tension calculated using vertical hanging weight plus the lateral weight multiplied by a friction factor of 0.35

- Test on Casing will be limited to 70% burst of the casing or 1500 psi, whichever is less
- XTO requests the option to use 5" BTC Float equipment for the the production casing

Wellhead:

Permanent Wellhead – Multibowl System

A. Starting Head: 11" 10M top flange x 9-5/8" bottom

B. Tubing Head: 11" 10M bottom flange x 7-1/16" 15M top flange

- Wellhead will be installed by manufacturer's representatives.
- Manufacturer will monitor welding process to ensure appropriate temperature of seal.
- Operator will test the 7-5/8" casing per BLM Onshore Order 2
- Wellhead Manufacturer representative will not be present for BOP test plug installation

4. Cement Program

Surface Casing: 9.625, 40 New BTC, J-55 casing to be set at +/- 393'

Tail: 180 sxs Class C + 2% CaCl (mixed at 14.8 ppg, 1.35 ft3/sx, 6.39 gal/sx water)

Top of Cement: Surface

Compressives: 12-hr = 900 psi 24 hr = 1500 psi

2nd Intermediate Casing: 7.625, 29.7 New casing to be set at +/- 10537'

1st Stage

Optional Lead: 310 sxs Class C (mixed at 10.5 ppg, 2.77 ft3/sx, 15.59 gal/sx water)

TOC: Surface

Tail: 440 sxs Class C (mixed at 14.8 ppg, 1.35 ft3/sx, 6.39 gal/sx water)

TOC: Brushy Canyon @ 5784

Compressives: 12-hr = 900 psi 24 hr = 1150 psi

2nd Stage

Lead: 0 sxs Class C (mixed at 12.9 ppg, 2.16 ft3/sx, 9.61 gal/sx water)

Tail: 650 sxs Class C (mixed at 14.8 ppg, 1.33 ft3/sx, 6.39 gal/sx water)

Top of Cement: 0

Compressives: 12-hr = 900 psi 24 hr = 1150 psi

XTO requests to pump a two stage cement job on the 7-5/8" intermediate casing string with the first stage being pumped conventionally with the calculated top of cement at the Brush Canyon (5784') and the second stage performed as a bradenhead squeeze with planned cement from the Brushy Canyon to surface. If cement is not visually confirmed to circulate to surface, the final cement top after the second stage job will be verified by Echo-meter. If necessary, a top out consisting of 1,500 sack of Class C cement + 3% Salt + 1% PreMag-M + 6% Bentonite Gel (2.30 yld, 12.91 ppg) will be executed as a contingency. If cement is still unable to circulate to surface, another Echo-meter run will be performed for cement top verification.

XTO will report to the BLM the volume of fluid (limited to 5 bbls) used to flush intermediate casing valves following backside cementing procedures.

XTO requests to pump an Optional Lead if well conditions dictate in an attempt to bring cement inside the first intermediate casing. If cement reaches the desired height, the BLM will be notified and the second stage bradenhead squeeze and subsequent TOC verification will be negated.

XTO requests the option to conduct the bradenhead squeeze and TOC verification offline as per standard approval from BLM when unplanned remediation is needed and batch drilling is approved. In the event the bradenhead is conducted, we will ensure the first stage cement job is cemented properly and the well is static with floats holding and no pressure on the csg annulus as with all other casing strings where batch drilling operations occur before moving off the rig. The TA cap will also be installed per Cactus procedure and pressure inside the casing will be monitored via the valve on the TA cap as per standard batch drilling ops.

Production Casing: 5.5, 20 New Semi-Flush, RY P-110 casing to be set at +/- 20361'

Lead: 20 sxs NeoCem (mixed at 13.8 ppg, 2.69 ft3/sx, 15.00 gal/sx water) Top of Cement: 10237 feet

Tail: 690 sxs VersaCem (mixed at 14.4 ppg, 1.51 ft3/sx, 8.38 gal/sx water) Top of Cement: 10737 feet

Compressives: 12-hr = 800 psi 24 hr = 1500 psi

XTO requests the option to offline cement and remediate (if needed) surface and intermediate casing strings where batch drilling is approved and if unplanned remediation is needed. XTO will ensure well is static with no pressure on the csg annulus, as with all other casing strings where batch drilling operations occur before moving off the rig. The TA cap will also be installed when applicable per Cactus procedure and pressure inside the casing will be monitored via the valve on the TA cap as per standard batch drilling ops. Offline cement operations will then be conducted after the rig is moved off the current well to the next well in the batch sequence.

5. Pressure Control Equipment

Once the permanent WH is installed on the 9.625 casing, the blow out preventer equipment (BOP) will consist of a 13-5/8" minimum 5M Hydril and a 13-5/8" minimum 5M Double Ram BOP. MASP should not exceed 4877 psi. In any instance where 10M BOP is required by BLM, XTO requests a variance to utilize 5M annular with 10M ram preventers (a common BOP configuration, which allows use of 10M rams in unlikely event that pressures exceed 5M).

All BOP testing will be done by an independent service company. Annular pressure tests will be limited to 50% of the working pressure. When nipping up on the 9.625, 5M bradenhead and flange, the BOP test will be limited to 5000 psi. When nipping up on the 7.625, the BOP will be tested to a minimum of 5000 psi. All BOP tests will include a low pressure test as per BLM regulations. The 5M BOP diagrams are attached. Blind rams will be functioned tested each trip, pipe rams will be functioned tested each day.

A variance is requested to allow use of a flex hose as the choke line from the BOP to the Choke Manifold. If this hose is used, a copy of the manufacturer's certification and pressure test chart will be kept on the rig. Attached is an example of a certification and pressure test chart. The manufacturer does not require anchors.

XTO requests a variance to be able to batch drill this well if necessary. In doing so, XTO will set casing and ensure that the well is cemented properly (unless approval is given for offline cementing) and the well is static. With floats holding, no pressure on the csg annulus, and the installation of a 10K TA cap as per Cactus recommendations, XTO will contact the BLM to skid the rig to drill the remaining wells on the pad. Once surface and both intermediate strings are all completed, XTO will begin drilling the production

hole on each of the wells.

A variance is requested to **ONLY** test broken pressure seals on the BOP equipment when moving from wellhead to wellhead which is in compliance with API Standard 53. API standard 53 states, that for pad drilling operation, moving from one wellhead to another within 21 days, pressure testing is required for pressure-containing and pressure-controlling connections when the integrity of a pressure seal is broken. Based on discussions with the BLM on February 27th 2020, we will request permission to **ONLY** retest broken pressure seals if the following conditions are met: 1. After a full BOP test is conducted on the first well on the pad 2. When skidding to drill an intermediate section that does not penetrate into the Wolfcamp.

6. Proposed Mud Circulation System

INTERVAL	Hole Size	Mud Type	MW (ppg)	Viscosity (sec/qt)	Fluid Loss (cc)
0' - 393'	12.25	FW/Native	8.4-8.9	35-40	NC
393' - 10537'	8.75	FW / Cut Brine / Direct Emulsion	10.2-10.7	30-32	NC
10537' - 20361'	6.75	OBM	12.5-13	50-60	NC - 20

The necessary mud products for weight addition and fluid loss control will be on location at all times.

Spud with fresh water/native mud. Drill out from under 9-5/8" surface casing with brine solution. A 9.7 ppg - 10.2 ppg cut brine mud will be used while drilling through the salt formation. Use fibrous materials as needed to control seepage and lost circulation. Pump viscous sweeps as needed for hole cleaning. Pump speed will be recorded on a daily drilling report after mudding up. A Pason or Totco will be used to detect changes in loss or gain of mud volume. A mud test will be performed every 24 hours to determine: density, viscosity, strength, filtration and pH as necessary. Use available solids controls equipment to help keep mud weight down after mud up. Rig up solids control equipment to operate as a closed loop system.

7. Auxiliary Well Control and Monitoring Equipment

- A. A Kelly cock will be in the drill string at all times.
- B. A full opening drill pipe stabbing valve having appropriate connections will be on the rig floor at all times.
- C. H2S monitors will be on location when drilling below the 9.625 casing.

8. Logging, Coring and Testing Program

Mud Logger: Mud Logging Unit (2 man) below intermediate casing.

Open hole logging will not be done on this well.

9. Abnormal Pressures and Temperatures / Potential Hazards

None Anticipated. BHT of 175 to 195 F is anticipated. No H2S is expected but monitors will be in place to detect any H2S occurrences. Should these circumstances be encountered the operator and drilling contractor are prepared to take all necessary steps to ensure safety of all personnel and environment. Lost circulation could occur but is not expected to be a serious problem in this area and hole seepage will be compensated for by additions of small amounts of LCM in the drilling fluid. The maximum anticipated bottom hole pressure for this well is 7373 psi.

10. Anticipated Starting Date and Duration of Operations

Anticipated spud date will be after BLM approval. Move in operations and drilling is expected to take 40 days.

Long Lead_Well Planning

EDDY

Poker Lake Unit 13-1 PC Pad B

167H

OH

Plan: Plan 1

Standard Planning Report

24 July, 2023

ExxonMobil

Planning Report

Database:	LMRKPROD3	Local Co-ordinate Reference:	Well 167H
Company:	Long Lead_Well Planning	TVD Reference:	RKB(3106+28.5) @ 3134.5usft
Project:	EDDY	MD Reference:	RKB(3106+28.5) @ 3134.5usft
Site:	Poker Lake Unit 13-1 PC Pad B	North Reference:	Grid
Well:	167H	Survey Calculation Method:	Minimum Curvature
Wellbore:	OH		
Design:	Plan 1		

Project	EDDY		
Map System:	US State Plane 1927 (Exact solution)	System Datum:	Mean Sea Level
Geo Datum:	NAD 1927 (NADCON CONUS)		
Map Zone:	New Mexico East 3001		

Site	Poker Lake Unit 13-1 PC Pad B		
Site Position:		Northing:	443,418.19 usft
From:	Map	Easting:	623,385.15 usft
Position Uncertainty:	3.0 usft	Slot Radius:	13-3/16 "
		Latitude:	32° 13' 6.399 N
		Longitude:	103° 56' 3.705 W

Well	167H		
Well Position	+N/-S	0.0 usft	Northing: 443,418.11 usft
	+E/-W	0.0 usft	Easting: 623,505.15 usft
Position Uncertainty	0.0 usft	Wellhead Elevation:	usft
Grid Convergence:	0.21 °	Ground Level:	3,106.0 usft
		Latitude:	32° 13' 6.393 N
		Longitude:	103° 56' 2.308 W

Wellbore	OH				
Magnetics	Model Name	Sample Date	Declination (°)	Dip Angle (°)	Field Strength (nT)
	IGRF2020	7/24/2023	6.47	59.77	47,236.83661847

Design	Plan 1				
Audit Notes:					
Version:	Phase:	PROTOTYPE	Tie On Depth:	0.0	
Vertical Section:	Depth From (TVD) (usft)	+N/-S (usft)	+E/-W (usft)	Direction (°)	
	0.0	0.0	0.0	179.74	

Plan Survey Tool Program	Date	7/24/2023			
Depth From (usft)	Depth To (usft)	Survey (Wellbore)	Tool Name	Remarks	
1	0.0	20,361.0 Plan 1 (OH)	XOM_R2OWSG MWD+IFR1+		
			OWSG MWD + IFR1 + Multi-St		

Planning Report

Database:	LMRKPROD3	Local Co-ordinate Reference:	Well 167H
Company:	Long Lead_Well Planning	TVD Reference:	RKB(3106+28.5) @ 3134.5usft
Project:	EDDY	MD Reference:	RKB(3106+28.5) @ 3134.5usft
Site:	Poker Lake Unit 13-1 PC Pad B	North Reference:	Grid
Well:	167H	Survey Calculation Method:	Minimum Curvature
Wellbore:	OH		
Design:	Plan 1		

Plan Sections										
Measured Depth (usft)	Inclination (°)	Azimuth (°)	Vertical Depth (usft)	+N/-S (usft)	+E/-W (usft)	Dogleg Rate (°/100usft)	Build Rate (°/100usft)	Turn Rate (°/100usft)	TFO (°)	Target
0.0	0.00	0.00	0.0	0.0	0.0	0.00	0.00	0.00	0.00	
1,200.0	0.00	0.00	1,200.0	0.0	0.0	0.00	0.00	0.00	0.00	
1,895.4	13.91	15.51	1,888.6	80.9	22.5	2.00	2.00	0.00	15.51	
5,199.1	13.91	15.51	5,095.4	846.1	234.8	0.00	0.00	0.00	0.00	
5,894.5	0.00	0.00	5,784.0	927.0	257.2	2.00	-2.00	0.00	180.00	
10,737.3	0.00	0.00	10,626.8	927.0	257.2	0.00	0.00	0.00	0.00	
11,862.3	90.00	179.74	11,343.0	210.8	260.5	8.00	0.00	0.00	179.74	167H_FTP
15,116.1	90.00	179.74	11,343.0	-3,042.9	275.5	0.00	0.00	0.00	0.00	167H_PP1
20,311.0	90.00	179.74	11,343.0	-8,237.8	299.3	0.00	0.00	0.00	0.00	167H_LTP
20,361.0	90.00	179.74	11,343.0	-8,287.8	299.6	0.00	0.00	0.00	0.00	167H_BHL

ExxonMobil

Planning Report

Database:	LMRKPROD3	Local Co-ordinate Reference:	Well 167H
Company:	Long Lead_Well Planning	TVD Reference:	RKB(3106+28.5) @ 3134.5usft
Project:	EDDY	MD Reference:	RKB(3106+28.5) @ 3134.5usft
Site:	Poker Lake Unit 13-1 PC Pad B	North Reference:	Grid
Well:	167H	Survey Calculation Method:	Minimum Curvature
Wellbore:	OH		
Design:	Plan 1		

Planned Survey									
Measured Depth (usft)	Inclination (°)	Azimuth (°)	Vertical Depth (usft)	+N/-S (usft)	+E/-W (usft)	Vertical Section (usft)	Dogleg Rate (°/100usft)	Build Rate (°/100usft)	Turn Rate (°/100usft)
0.0	0.00	0.00	0.0	0.0	0.0	0.0	0.00	0.00	0.00
167H_SHL									
1,200.0	0.00	0.00	1,200.0	0.0	0.0	0.0	0.00	0.00	0.00
1,300.0	2.00	15.51	1,300.0	1.7	0.5	-1.7	2.00	2.00	0.00
1,400.0	4.00	15.51	1,399.8	6.7	1.9	-6.7	2.00	2.00	0.00
1,500.0	6.00	15.51	1,499.5	15.1	4.2	-15.1	2.00	2.00	0.00
1,600.0	8.00	15.51	1,598.7	26.9	7.5	-26.8	2.00	2.00	0.00
1,700.0	10.00	15.51	1,697.5	41.9	11.6	-41.9	2.00	2.00	0.00
1,800.0	12.00	15.51	1,795.6	60.3	16.7	-60.2	2.00	2.00	0.00
1,895.4	13.91	15.51	1,888.6	80.9	22.5	-80.8	2.00	2.00	0.00
1,900.0	13.91	15.51	1,893.1	82.0	22.8	-81.9	0.00	0.00	0.00
2,000.0	13.91	15.51	1,990.1	105.2	29.2	-105.0	0.00	0.00	0.00
2,100.0	13.91	15.51	2,087.2	128.3	35.6	-128.2	0.00	0.00	0.00
2,200.0	13.91	15.51	2,184.3	151.5	42.0	-151.3	0.00	0.00	0.00
2,300.0	13.91	15.51	2,281.3	174.6	48.5	-174.4	0.00	0.00	0.00
2,400.0	13.91	15.51	2,378.4	197.8	54.9	-197.5	0.00	0.00	0.00
2,500.0	13.91	15.51	2,475.5	221.0	61.3	-220.7	0.00	0.00	0.00
2,600.0	13.91	15.51	2,572.5	244.1	67.7	-243.8	0.00	0.00	0.00
2,700.0	13.91	15.51	2,669.6	267.3	74.2	-266.9	0.00	0.00	0.00
2,800.0	13.91	15.51	2,766.7	290.4	80.6	-290.1	0.00	0.00	0.00
2,900.0	13.91	15.51	2,863.7	313.6	87.0	-313.2	0.00	0.00	0.00
3,000.0	13.91	15.51	2,960.8	336.8	93.4	-336.3	0.00	0.00	0.00
3,100.0	13.91	15.51	3,057.9	359.9	99.9	-359.5	0.00	0.00	0.00
3,200.0	13.91	15.51	3,154.9	383.1	106.3	-382.6	0.00	0.00	0.00
3,300.0	13.91	15.51	3,252.0	406.2	112.7	-405.7	0.00	0.00	0.00
3,400.0	13.91	15.51	3,349.1	429.4	119.1	-428.9	0.00	0.00	0.00
3,500.0	13.91	15.51	3,446.2	452.6	125.6	-452.0	0.00	0.00	0.00
3,600.0	13.91	15.51	3,543.2	475.7	132.0	-475.1	0.00	0.00	0.00
3,700.0	13.91	15.51	3,640.3	498.9	138.4	-498.3	0.00	0.00	0.00
3,800.0	13.91	15.51	3,737.4	522.1	144.9	-521.4	0.00	0.00	0.00
3,900.0	13.91	15.51	3,834.4	545.2	151.3	-544.5	0.00	0.00	0.00
4,000.0	13.91	15.51	3,931.5	568.4	157.7	-567.7	0.00	0.00	0.00
4,100.0	13.91	15.51	4,028.6	591.5	164.1	-590.8	0.00	0.00	0.00
4,200.0	13.91	15.51	4,125.6	614.7	170.6	-613.9	0.00	0.00	0.00
4,300.0	13.91	15.51	4,222.7	637.9	177.0	-637.0	0.00	0.00	0.00
4,400.0	13.91	15.51	4,319.8	661.0	183.4	-660.2	0.00	0.00	0.00
4,500.0	13.91	15.51	4,416.8	684.2	189.8	-683.3	0.00	0.00	0.00
4,600.0	13.91	15.51	4,513.9	707.3	196.3	-706.4	0.00	0.00	0.00
4,700.0	13.91	15.51	4,611.0	730.5	202.7	-729.6	0.00	0.00	0.00
4,800.0	13.91	15.51	4,708.0	753.7	209.1	-752.7	0.00	0.00	0.00
4,900.0	13.91	15.51	4,805.1	776.8	215.5	-775.8	0.00	0.00	0.00
5,000.0	13.91	15.51	4,902.2	800.0	222.0	-799.0	0.00	0.00	0.00
5,100.0	13.91	15.51	4,999.2	823.1	228.4	-822.1	0.00	0.00	0.00
5,199.1	13.91	15.51	5,095.4	846.1	234.8	-845.0	0.00	0.00	0.00
5,200.0	13.89	15.51	5,096.3	846.3	234.8	-845.2	2.00	-2.00	0.00
5,300.0	11.89	15.51	5,193.8	867.8	240.8	-866.7	2.00	-2.00	0.00
5,400.0	9.89	15.51	5,292.0	886.0	245.8	-884.9	2.00	-2.00	0.00
5,500.0	7.89	15.51	5,390.8	900.9	250.0	-899.7	2.00	-2.00	0.00
5,600.0	5.89	15.51	5,490.0	912.4	253.2	-911.3	2.00	-2.00	0.00
5,700.0	3.89	15.51	5,589.7	920.7	255.5	-919.5	2.00	-2.00	0.00
5,800.0	1.89	15.51	5,689.5	925.5	256.8	-924.3	2.00	-2.00	0.00
5,894.5	0.00	0.00	5,784.0	927.0	257.2	-925.8	2.00	-2.00	0.00
10,737.3	0.00	0.00	10,626.8	927.0	257.2	-925.8	0.00	0.00	0.00
10,800.0	5.02	179.74	10,689.5	924.3	257.2	-923.1	8.00	8.00	0.00

ExxonMobil

Planning Report

Database:	LMRKPROD3	Local Co-ordinate Reference:	Well 167H
Company:	Long Lead_Well Planning	TVD Reference:	RKB(3106+28.5) @ 3134.5usft
Project:	EDDY	MD Reference:	RKB(3106+28.5) @ 3134.5usft
Site:	Poker Lake Unit 13-1 PC Pad B	North Reference:	Grid
Well:	167H	Survey Calculation Method:	Minimum Curvature
Wellbore:	OH		
Design:	Plan 1		

Planned Survey										
Measured Depth (usft)	Inclination (°)	Azimuth (°)	Vertical Depth (usft)	+N/-S (usft)	+E/-W (usft)	Vertical Section (usft)	Dogleg Rate (°/100usft)	Build Rate (°/100usft)	Turn Rate (°/100usft)	
10,900.0	13.02	179.74	10,788.1	908.6	257.3	-907.4	8.00	8.00	0.00	
11,000.0	21.02	179.74	10,883.7	879.4	257.4	-878.2	8.00	8.00	0.00	
11,100.0	29.02	179.74	10,974.2	837.1	257.6	-835.9	8.00	8.00	0.00	
11,200.0	37.02	179.74	11,058.0	782.7	257.9	-781.5	8.00	8.00	0.00	
11,300.0	45.02	179.74	11,133.4	717.1	258.2	-715.9	8.00	8.00	0.00	
11,400.0	53.02	179.74	11,198.9	641.7	258.5	-640.5	8.00	8.00	0.00	
11,500.0	61.02	179.74	11,253.3	557.8	258.9	-556.7	8.00	8.00	0.00	
11,600.0	69.02	179.74	11,295.5	467.3	259.3	-466.1	8.00	8.00	0.00	
11,700.0	77.02	179.74	11,324.7	371.7	259.8	-370.5	8.00	8.00	0.00	
11,800.0	85.02	179.74	11,340.3	273.0	260.2	-271.8	8.00	8.00	0.00	
11,862.3	90.00	179.74	11,343.0	210.8	260.5	-209.6	8.00	8.00	0.00	
167H_FTP										
11,900.0	90.00	179.74	11,343.0	173.1	260.7	-171.9	0.00	0.00	0.00	
12,000.0	90.00	179.74	11,343.0	73.1	261.1	-71.9	0.00	0.00	0.00	
12,100.0	90.00	179.74	11,343.0	-26.9	261.6	28.1	0.00	0.00	0.00	
12,200.0	90.00	179.74	11,343.0	-126.9	262.1	128.1	0.00	0.00	0.00	
12,300.0	90.00	179.74	11,343.0	-226.9	262.5	228.1	0.00	0.00	0.00	
12,400.0	90.00	179.74	11,343.0	-326.9	263.0	328.1	0.00	0.00	0.00	
12,500.0	90.00	179.74	11,343.0	-426.9	263.4	428.1	0.00	0.00	0.00	
12,600.0	90.00	179.74	11,343.0	-526.9	263.9	528.1	0.00	0.00	0.00	
12,700.0	90.00	179.74	11,343.0	-626.9	264.4	628.1	0.00	0.00	0.00	
12,800.0	90.00	179.74	11,343.0	-726.9	264.8	728.1	0.00	0.00	0.00	
12,900.0	90.00	179.74	11,343.0	-826.9	265.3	828.1	0.00	0.00	0.00	
13,000.0	90.00	179.74	11,343.0	-926.9	265.7	928.1	0.00	0.00	0.00	
13,100.0	90.00	179.74	11,343.0	-1,026.9	266.2	1,028.1	0.00	0.00	0.00	
13,200.0	90.00	179.74	11,343.0	-1,126.9	266.7	1,128.1	0.00	0.00	0.00	
13,300.0	90.00	179.74	11,343.0	-1,226.9	267.1	1,228.1	0.00	0.00	0.00	
13,400.0	90.00	179.74	11,343.0	-1,326.9	267.6	1,328.1	0.00	0.00	0.00	
13,500.0	90.00	179.74	11,343.0	-1,426.9	268.0	1,428.1	0.00	0.00	0.00	
13,600.0	90.00	179.74	11,343.0	-1,526.9	268.5	1,528.1	0.00	0.00	0.00	
13,700.0	90.00	179.74	11,343.0	-1,626.9	269.0	1,628.1	0.00	0.00	0.00	
13,800.0	90.00	179.74	11,343.0	-1,726.9	269.4	1,728.1	0.00	0.00	0.00	
13,900.0	90.00	179.74	11,343.0	-1,826.9	269.9	1,828.1	0.00	0.00	0.00	
14,000.0	90.00	179.74	11,343.0	-1,926.9	270.3	1,928.1	0.00	0.00	0.00	
14,100.0	90.00	179.74	11,343.0	-2,026.9	270.8	2,028.1	0.00	0.00	0.00	
14,200.0	90.00	179.74	11,343.0	-2,126.9	271.3	2,128.1	0.00	0.00	0.00	
14,300.0	90.00	179.74	11,343.0	-2,226.9	271.7	2,228.1	0.00	0.00	0.00	
14,400.0	90.00	179.74	11,343.0	-2,326.9	272.2	2,328.1	0.00	0.00	0.00	
14,500.0	90.00	179.74	11,343.0	-2,426.9	272.6	2,428.1	0.00	0.00	0.00	
14,600.0	90.00	179.74	11,343.0	-2,526.9	273.1	2,528.1	0.00	0.00	0.00	
14,700.0	90.00	179.74	11,343.0	-2,626.9	273.6	2,628.1	0.00	0.00	0.00	
14,800.0	90.00	179.74	11,343.0	-2,726.9	274.0	2,728.1	0.00	0.00	0.00	
14,900.0	90.00	179.74	11,343.0	-2,826.9	274.5	2,828.1	0.00	0.00	0.00	
15,000.0	90.00	179.74	11,343.0	-2,926.9	274.9	2,928.1	0.00	0.00	0.00	
15,100.0	90.00	179.74	11,343.0	-3,026.9	275.4	3,028.1	0.00	0.00	0.00	
15,116.1	90.00	179.74	11,343.0	-3,042.9	275.5	3,044.1	0.00	0.00	0.00	
167H_PP1										
15,200.0	90.00	179.74	11,343.0	-3,126.9	275.9	3,128.1	0.00	0.00	0.00	
15,300.0	90.00	179.74	11,343.0	-3,226.9	276.3	3,228.1	0.00	0.00	0.00	
15,400.0	90.00	179.74	11,343.0	-3,326.9	276.8	3,328.1	0.00	0.00	0.00	
15,500.0	90.00	179.74	11,343.0	-3,426.9	277.2	3,428.1	0.00	0.00	0.00	
15,600.0	90.00	179.74	11,343.0	-3,526.9	277.7	3,528.1	0.00	0.00	0.00	
15,700.0	90.00	179.74	11,343.0	-3,626.9	278.1	3,628.1	0.00	0.00	0.00	
15,800.0	90.00	179.74	11,343.0	-3,726.9	278.6	3,728.1	0.00	0.00	0.00	

ExxonMobil

Planning Report

Database:	LMRKPROD3	Local Co-ordinate Reference:	Well 167H
Company:	Long Lead_Well Planning	TVD Reference:	RKB(3106+28.5) @ 3134.5usft
Project:	EDDY	MD Reference:	RKB(3106+28.5) @ 3134.5usft
Site:	Poker Lake Unit 13-1 PC Pad B	North Reference:	Grid
Well:	167H	Survey Calculation Method:	Minimum Curvature
Wellbore:	OH		
Design:	Plan 1		

Planned Survey									
Measured Depth (usft)	Inclination (°)	Azimuth (°)	Vertical Depth (usft)	+N/-S (usft)	+E/-W (usft)	Vertical Section (usft)	Dogleg Rate (°/100usft)	Build Rate (°/100usft)	Turn Rate (°/100usft)
15,900.0	90.00	179.74	11,343.0	-3,826.9	279.1	3,828.1	0.00	0.00	0.00
16,000.0	90.00	179.74	11,343.0	-3,926.9	279.5	3,928.1	0.00	0.00	0.00
16,100.0	90.00	179.74	11,343.0	-4,026.9	280.0	4,028.1	0.00	0.00	0.00
16,200.0	90.00	179.74	11,343.0	-4,126.9	280.4	4,128.1	0.00	0.00	0.00
16,300.0	90.00	179.74	11,343.0	-4,226.9	280.9	4,228.1	0.00	0.00	0.00
16,400.0	90.00	179.74	11,343.0	-4,326.9	281.4	4,328.1	0.00	0.00	0.00
16,500.0	90.00	179.74	11,343.0	-4,426.8	281.8	4,428.1	0.00	0.00	0.00
16,600.0	90.00	179.74	11,343.0	-4,526.8	282.3	4,528.1	0.00	0.00	0.00
16,700.0	90.00	179.74	11,343.0	-4,626.8	282.7	4,628.1	0.00	0.00	0.00
16,800.0	90.00	179.74	11,343.0	-4,726.8	283.2	4,728.1	0.00	0.00	0.00
16,900.0	90.00	179.74	11,343.0	-4,826.8	283.7	4,828.1	0.00	0.00	0.00
17,000.0	90.00	179.74	11,343.0	-4,926.8	284.1	4,928.1	0.00	0.00	0.00
17,100.0	90.00	179.74	11,343.0	-5,026.8	284.6	5,028.1	0.00	0.00	0.00
17,200.0	90.00	179.74	11,343.0	-5,126.8	285.0	5,128.1	0.00	0.00	0.00
17,300.0	90.00	179.74	11,343.0	-5,226.8	285.5	5,228.1	0.00	0.00	0.00
17,400.0	90.00	179.74	11,343.0	-5,326.8	286.0	5,328.1	0.00	0.00	0.00
17,500.0	90.00	179.74	11,343.0	-5,426.8	286.4	5,428.1	0.00	0.00	0.00
17,600.0	90.00	179.74	11,343.0	-5,526.8	286.9	5,528.1	0.00	0.00	0.00
17,700.0	90.00	179.74	11,343.0	-5,626.8	287.3	5,628.1	0.00	0.00	0.00
17,800.0	90.00	179.74	11,343.0	-5,726.8	287.8	5,728.1	0.00	0.00	0.00
17,900.0	90.00	179.74	11,343.0	-5,826.8	288.3	5,828.1	0.00	0.00	0.00
18,000.0	90.00	179.74	11,343.0	-5,926.8	288.7	5,928.1	0.00	0.00	0.00
18,100.0	90.00	179.74	11,343.0	-6,026.8	289.2	6,028.1	0.00	0.00	0.00
18,200.0	90.00	179.74	11,343.0	-6,126.8	289.6	6,128.1	0.00	0.00	0.00
18,300.0	90.00	179.74	11,343.0	-6,226.8	290.1	6,228.1	0.00	0.00	0.00
18,400.0	90.00	179.74	11,343.0	-6,326.8	290.6	6,328.1	0.00	0.00	0.00
18,500.0	90.00	179.74	11,343.0	-6,426.8	291.0	6,428.1	0.00	0.00	0.00
18,600.0	90.00	179.74	11,343.0	-6,526.8	291.5	6,528.1	0.00	0.00	0.00
18,700.0	90.00	179.74	11,343.0	-6,626.8	291.9	6,628.1	0.00	0.00	0.00
18,800.0	90.00	179.74	11,343.0	-6,726.8	292.4	6,728.1	0.00	0.00	0.00
18,900.0	90.00	179.74	11,343.0	-6,826.8	292.9	6,828.1	0.00	0.00	0.00
19,000.0	90.00	179.74	11,343.0	-6,926.8	293.3	6,928.1	0.00	0.00	0.00
19,100.0	90.00	179.74	11,343.0	-7,026.8	293.8	7,028.1	0.00	0.00	0.00
19,200.0	90.00	179.74	11,343.0	-7,126.8	294.2	7,128.1	0.00	0.00	0.00
19,300.0	90.00	179.74	11,343.0	-7,226.8	294.7	7,228.1	0.00	0.00	0.00
19,400.0	90.00	179.74	11,343.0	-7,326.8	295.2	7,328.1	0.00	0.00	0.00
19,500.0	90.00	179.74	11,343.0	-7,426.8	295.6	7,428.1	0.00	0.00	0.00
19,600.0	90.00	179.74	11,343.0	-7,526.8	296.1	7,528.1	0.00	0.00	0.00
19,700.0	90.00	179.74	11,343.0	-7,626.8	296.5	7,628.1	0.00	0.00	0.00
19,800.0	90.00	179.74	11,343.0	-7,726.8	297.0	7,728.1	0.00	0.00	0.00
19,900.0	90.00	179.74	11,343.0	-7,826.8	297.5	7,828.1	0.00	0.00	0.00
20,000.0	90.00	179.74	11,343.0	-7,926.8	297.9	7,928.1	0.00	0.00	0.00
20,100.0	90.00	179.74	11,343.0	-8,026.8	298.4	8,028.1	0.00	0.00	0.00
20,200.0	90.00	179.74	11,343.0	-8,126.8	298.8	8,128.1	0.00	0.00	0.00
20,300.0	90.00	179.74	11,343.0	-8,226.8	299.3	8,228.1	0.00	0.00	0.00
20,311.0	90.00	179.74	11,343.0	-8,237.8	299.3	8,239.1	0.00	0.00	0.00
167H_LTP									
20,361.0	90.00	179.74	11,343.0	-8,287.8	299.6	8,289.1	0.00	0.00	0.00
167H_BHL									

ExxonMobil

Planning Report

Database:	LMRKPROD3	Local Co-ordinate Reference:	Well 167H
Company:	Long Lead_Well Planning	TVD Reference:	RKB(3106+28.5) @ 3134.5usft
Project:	EDDY	MD Reference:	RKB(3106+28.5) @ 3134.5usft
Site:	Poker Lake Unit 13-1 PC Pad B	North Reference:	Grid
Well:	167H	Survey Calculation Method:	Minimum Curvature
Wellbore:	OH		
Design:	Plan 1		

Design Targets									
Target Name									
- hit/miss target	Dip Angle	Dip Dir.	TVD	+N/-S	+E/-W	Northing	Easting	Latitude	Longitude
- Shape	(°)	(°)	(usft)	(usft)	(usft)	(usft)	(usft)		
167H_SHL	0.00	0.00	0.0	0.0	0.0	443,418.11	623,505.15	32° 13' 6.393 N	103° 56' 2.308 W
- plan hits target center									
- Rectangle (sides W20.0 H20.0 D0.0)									
167H_LTP	0.00	0.00	11,343.0	-8,237.8	299.3	435,180.31	623,804.49	32° 11' 44.860 N	103° 55' 59.181 W
- plan hits target center									
- Point									
167H_FTP	0.00	0.00	11,343.0	210.8	260.5	443,628.94	623,765.66	32° 13' 8.470 N	103° 55' 59.267 W
- plan hits target center									
- Point									
167H_PP1	0.00	0.00	11,343.0	-3,042.9	275.5	440,375.19	623,780.61	32° 12' 36.270 N	103° 55' 59.234 W
- plan hits target center									
- Point									
167H_BHL	0.00	0.00	11,343.0	-8,287.8	299.6	435,130.31	623,804.78	32° 11' 44.365 N	103° 55' 59.180 W
- plan misses target center by 0.1usft at 20361.0usft MD (11343.0 TVD, -8287.8 N, 299.6 E)									
- Point									

ALL INFORMATION CONTAINED HEREIN IS THE PROPERTY OF CACTUS WELLHEAD, LLC. REPRODUCTION, DISCLOSURE, OR USE THEREOF IS PERMISSIBLE ONLY AS PROVIDED BY CONTRACT OR AS EXPRESSLY AUTHORIZED BY CACTUS WELLHEAD, LLC.



ALL DIMENSIONS APPROXIMATE			
CACTUS WELLHEAD LLC		XTO ENERGY INC DELAWARE BASIN	
20" x 9-5/8" x 7-5/8" x 5-1/2" MBU-T-CFL-R-DBLO Wellhead With 11" 10M x 7-1/16" 15M CTH-DBLHPS Tubing Head And 9-5/8", 7-5/8" & 5-1/2" Pin Bottom Mandrel Casing Hangers		DRAWN	VJK
		APPRV	31MAR22
		DRAWING NO.	HBE0000479

District I
1625 N. French Dr., Hobbs, NM 88240
Phone:(575) 393-6161 Fax:(575) 393-0720
District II
811 S. First St., Artesia, NM 88210
Phone:(575) 748-1283 Fax:(575) 748-9720
District III
1000 Rio Brazos Rd., Aztec, NM 87410
Phone:(505) 334-6178 Fax:(505) 334-6170
District IV
1220 S. St Francis Dr., Santa Fe, NM 87505
Phone:(505) 476-3470 Fax:(505) 476-3462

State of New Mexico
Energy, Minerals and Natural Resources
Oil Conservation Division
1220 S. St Francis Dr.
Santa Fe, NM 87505

CONDITIONS

Action 277567

CONDITIONS

Operator: XTO PERMIAN OPERATING LLC. 6401 HOLIDAY HILL ROAD MIDLAND, TX 79707	OGRID: 373075
	Action Number: 277567
	Action Type: [C-103] NOI Change of Plans (C-103A)

CONDITIONS

Created By	Condition	Condition Date
ward.rikala	None	9/27/2024