

Well Name: SAN JUAN 29-7 NP	Well Location: T29N / R7W / SEC 19 / SWNE / 36.714996 / -107.611038	County or Parish/State: RIO ARRIBA / NM
Well Number: 512	Type of Well: OTHER	Allottee or Tribe Name:
Lease Number: NMSF078503A	Unit or CA Name:	Unit or CA Number:
US Well Number: 3003924342	Operator: HILCORP ENERGY COMPANY	

Subsequent Report

Sundry ID: 2814010

Type of Submission: Subsequent Report

Type of Action: Drilling Operations

Date Sundry Submitted: 09/26/2024

Time Sundry Submitted: 12:36

Date Operation Actually Began: 08/19/2024

Actual Procedure: Revised Csg/Cmt Sundry: 8/19/2024 - Directionally drill 6-1/8" production hole to 8166' TD. MIRU csg crew. RIH, land 182 jts 4-1/2" 11.6#, J-55 LTC csg @ 8153'. DV tool @ 6069'. 8/21/2024 - Run 2 Stage cmt job. Stage 1 cmt: Mix/pump @ 3.5 bpm, 20 bbls 12 ppg spacer, followed by 102 sx 12.5 ppg Class "G" cmt (2.29 yld, 12.1 gal/sk) followed by drop flex wiper plug. Disp @ 4 bpm w/40 bbls FW, 85.7 bbls system mud = 125.7 total bbls. FCP 1120 psi, up to 1527 psi held for 5 min. Plug down 8/21/2024 @ 10:08 hrs. No agency on site to witness. 8 bbl cmt back to surface off top of DV tool. Stage 2 cmt: Mix/pump @ 4 bpm 49 bbls, 12 ppg spacer (2.47 yld, 14.42 MW) followed by 57 bbls, 139 sx 12.5 ppg Class "G" cmt (2.29 yld, 12.1 gal/sk) followed by wiper plug. Disp @ 4 bpm, then slow to 3 bpm w/ 94 bbls FW. Bump plug on schedule - FCP 728 psi, pressure up to 3000 psi, hold for 5 min. Floats held. 1 bbl back on bleed off. Lost circ @ 90 bbl into displacement. No cmt to surface. Plug down 8/21/2024 @ 17:01 hrs. No agency onsite as witness. WOC. RR @ 06:00 hrs. 8/27/24 - MIRU. DO cmt/wiper plug. Circ clean. Run CBL. TOC @ 5470'. 8/28/2024 - Run MIT on 4-1/2" csg to 560 psi, witnessed/passed by Eileen Medrano, NMOCD. PT csg to 4500 psi, good test. Note: Post cmt remediation work TOC @ 2170' based on CBL dated 8/27/2024 (on separate sundry).

Well Name: SAN JUAN 29-7 NP

Well Location: T29N / R7W / SEC 19 /
SWNE / 36.714996 / -107.611038

County or Parish/State: RIO
ARRIBA / NM

Well Number: 512

Type of Well: OTHER

Allottee or Tribe Name:

Lease Number: NMSF078503A

Unit or CA Name:

Unit or CA Number:

US Well Number: 3003924342

Operator: HILCORP ENERGY
COMPANY

SR Attachments

PActual Procedure

SJ_29_7_Unit_NP_512_Csg_Cmt_Sundry_20240926123442.pdf

Operator

I certify that the foregoing is true and correct. Title 18 U.S.C. Section 1001 and Title 43 U.S.C. Section 1212, make it a crime for any person knowingly and willfully to make to any department or agency of the United States any false, fictitious or fraudulent statements or representations as to any matter within its jurisdiction. Electronic submission of Sundry Notices through this system satisfies regulations requiring a

Operator Electronic Signature: CHERYLENE WESTON

Signed on: SEP 26, 2024 11:32 AM

Name: HILCORP ENERGY COMPANY

Title: Operations/Regulatory Tech - Sr

Street Address: 1111 TRAVIS STREET

City: HOUSTON

State: TX

Phone: (713) 289-2615

Email address: CWESTON@HILCORP.COM

Field

Representative Name:

Street Address:

City:

State:

Zip:

Phone:

Email address:

BLM Point of Contact

BLM POC Name: KENNETH G RENNICK

BLM POC Title: Petroleum Engineer

BLM POC Phone: 5055647742

BLM POC Email Address: krennick@blm.gov

Disposition: Accepted

Disposition Date: 09/26/2024

Signature: Kenneth Rennick



Well Operations Summary L48

Well Name: SAN JUAN 29-7 UNIT NP #512 ST1

API: 3003924342	Field: BASIN (FRUITLAND COAL)	State: NEW MEXICO
Permit to Drill (PTD) #:	Sundry #:	Rig/Service: RIG #3

Jobs

Actual Start Date: 8/12/2024 End Date: 8/22/2024

Report Number 4	Report Start Date 8/15/2024	Report End Date 8/16/2024
--------------------	--------------------------------	------------------------------

Operation

CONT MU & RIH W/ 6-1/8" DIRECTIONAL BHA

TIH W/ 6-1/8" DIA DIRECTIONAL BHA 149'-3426'

ROTATE & SLIDE 3426'-3868' (442' @ 68'/HR)
WOB: 10-30
RPM: 210 (TDS- 40 / MM-170)
GPM: 270
SPP: 400 PSI
DIFF: 150-500 PSI
TRQ: 3-5
MW: 8.4-8.6 PPG

PUMP SWEEP & CIRC HOLE CLEAN BEFORE POOH TO INSPECT BHA BECAUSE OF SLOW ROP

TOOH TO THE DIRECTIONAL TOOLS, NO TIGHT SPOT'S

TOOH WITH DIRECTIONAL BHA, NOTE: MOTOR DID NOT DRAIN, BIT HAD 2 SMALL CHIPS ON GUAGE, 1PLUGGED JET AND JUNK SLOTS PACKED WITH FORMATION. A FEW ROUNDED CHUNKS OF METAL ON TOP OF BIT STUCK IN SOME PACKED FORMATION. CHANGE OUT BIT AND MOTOR, RESCRIBE, ORIENTATE AND TIH

TIH, WITH 6 1/8" REED PDC MODEL TKF53 D8 W/ 5X16 JETS 0.98 TFA AND A DISCOVERY/SUPERHAWK MOTOR 5/6 LOBE 6.7 STAGE 4.5' BIT TO BEND 1.5 DEG ANGLE 0.630 REV PER GAL WASH AND FEATHER BIT BACK TO BOTTOM @ 3868'

DRILL, ROTATE & SLIDE 3868' TO 4350' (482' @ 74'/HR)

WOB: 10-20
RPM: 224 (TDS- 35 / MM-189)
GPM: 300
SPP: 1590 PSI
DIFF: 350- 550 PSI
TRQ: 4-5.5
MW: 8.4-8.6 PPG

Report Number 5	Report Start Date 8/16/2024	Report End Date 8/17/2024
--------------------	--------------------------------	------------------------------

Operation

ROTATE & SLIDE 4350'-4900' (550' @ 68.7'/HR)

WOB: 10-25
RPM: 213 (TDS- 30 / MM-183)
GPM: 290
SPP: 1300-2100 PSI
DIFF: 200-850 PSI
TRQ: 4-6
MW: 8.6 PPG

RIG SERVICE

ROTATE & SLIDE 4900'- 5185' (285' @ 81.4'/HR)

WOB: 10-25
RPM: 213 (TDS- 30 / MM-183)
GPM: 290
SPP: 1300-2100 PSI
DIFF: 200-850 PSI
TRQ: 4-6
MW: 8.6 PPG

LOSE 50 BBL MUD, PUMP LCM , SWEEPS, MIX LCM, CONDITION MUD AND CIRCULATE. 100% RETURNS NO CONTINUED LOSSES

ROTATE & SLIDE 5185'- 5224' (39' @ 39'/HR)

WOB: 10-25
RPM: 213 (TDS- 30 / MM-183)
GPM: 270
SPP: 1300-2100 PSI
DIFF: 200-850 PSI
TRQ: 4-6
MW: 8.6 PPG

LOST TOTAL RETURNS @ 5224', PULL 5 STAND'S DP, PUMP 2- 80 BBL LCM PILLS AND 60 BBL FROM ACTIVE. REGAIN CIRCULATION, PULL SCREENS ON SHAKER'S, BUILD VOLUME AND MIX LCM TO ACTIVE

TIH 5 STAND'S,

ROTATE & SLIDE 5224' - 5500 (276' @ 61'/HR)

WOB: 10-20
RPM: 205 (TDS- 35 / MM-170)
GPM: 270
SPP: 1300-2100 PSI
DIFF: 200-850 PSI
TRQ: 4-6
MW: 8.6 PPG



Well Operations Summary L48

Well Name: SAN JUAN 29-7 UNIT NP #512 ST1

API: 3003924342	Field: BASIN (FRUITLAND COAL)	State: NEW MEXICO
	Sundry #:	Rig/Service: RIG #3

Operation		
PUMP SWEEP, CIRCULATE AND PREP FOR WIPER TRIP		
WIPER TRIP, FLOW CHECK, TOO H		

Report Number 6	Report Start Date 8/17/2024	Report End Date 8/18/2024
--------------------	--------------------------------	------------------------------

Operation		
X-OUT BIT, TIH & CBU EVERY 1000' IN OPEN HOLE		

ROTATE & SLIDE 5500'- 6221' (721' @ 120'/HR)
WOB: 10-20
RPM: 205 (TDS- 35 / MM-170)
GPM: 270
SPP: 1300-2100 PSI
DIFF: 200-850 PSI
TRQ: 4-6
MW: 8.6 PPG
NOTE: MAINTAINING ~20% LCM IN ACTIVE SYSTEM W/ SCREENS PULLED 5500'-6100', SCREENED UP AND SHOOK OUT LCM @ 6140'

@ 6221' LOST RETURNS, PUMP AWAY 60 BBLs, PULL 5 STAND'S, MIX AND PUMP LCM PILLS TOTAL 120 BBLs @ 40 PPBBL LCM, CHASE WITH 20 BBL MUD FROM ACTIVE. REGAIN CIRCULATION. BUILD BACK VOLUME IN ACTIVE AND GET TO 25% LCM CONTENT. (TOTAL 200 BBL LOSS) TIH 5 STAND'S

ROTATE & SLIDE 6221'-6715' (494' @ 76'/HR)
WOB: 10-20
RPM: 211 (TDS- 35 / MM-176)
GPM: 280
SPP: 1300-2100 PSI
DIFF: 200-850 PSI
TRQ: 4-6
MW: 8.6 PPG
NOTE: MAINTAINING 20-25% LCM IN ACTIVE SYSTEM W/ SCREENS PULLED

Report Number 7	Report Start Date 8/18/2024	Report End Date 8/19/2024
--------------------	--------------------------------	------------------------------

Operation		
-----------	--	--

ROTATE & SLIDE 6715'-6971' (256' @ 42.6'/HR)
WOB: 10-20
RPM: 206 (TDS- 30 / MM-176)
GPM: 280
SPP: 1100-1800 PSI
DIFF: 200-750 PSI
TRQ: 5-9
MW: 8.6-8.8 PPG
NOTE: STARTED SCREENING OUT LCM @ 6730'

LOST FULL RETURNS @ 6971', SPOTTED 60 BBL LCM PILL & POOH TO 6650', BREAK CIRC @ 175 GPM W/ PARTIAL RETURNS, PUMP ANOTHER 60 BBL LCM SWEEP GETTING FULL RETURNS, C&C BUILDING VOLUME, TIH TO 6971'

ROTATE & SLIDE 6971'-7950' (979'@ 61 'HR) @ 7650' LIMIT ROP 60 FPH @ 7800' LIMIT TO 80' FPH. (GEO)
WOB: 10-20
RPM: 206 (TDS- 30 / MM-176)
GPM: 280
SPP: 1300-1900 PSI
DIFF: 300-750 PSI
TRQ: 5-7
MW: 8.6-8.8 PPG
NOTE: MAINTAINING ~10-15% LCM IN ACTIVE

Report Number 8	Report Start Date 8/19/2024	Report End Date 8/20/2024
--------------------	--------------------------------	------------------------------

Operation		
-----------	--	--

ROTATE & SLIDE 7950'-8166' TD (216' @ 43.2'/HR)
WOB: 10-20
RPM: 206 (TDS-30 / MM-176)
GPM: 280
SPP: 1500-1700 PSI
DIFF: 100-500 PSI
TRQ: 5-7
MW: 8.8-9.0 PPG
NOTE: MAINTAINING 10-15% LCM IN ACTIVE

CBU x 3
WIPER TRIP TO 8166' -> 3400' -> 8166'

BREAK CIRCULATION LOSE TOTAL RETURNS @ BU W/ 9500 UNITS OF GAS. PUMP 2- 70 BBL PILLS W 40% LCM, CHASE WITH 300 BBLs 25% FROM ACTIVE NO RETURNS. PULL 5 MORE STAND'S TO 7471' WITH SOME OVERPULL FIRST STAND, BUILD VOLUME, MIX MUD AND LCM TO 30% AND PUMP 400 BBL FROM ACTIVE. CATCH SOME PRESSURE, WAIT ON WATER 30 MIN. BUILD VOLUME AND MIX. PUMP ADDITIONAL 105 BBL. REGAIN FULL CIRCULATION (TOTAL LOSSES 940 BBLs)

CIRCULATE AND CONDITION MUD, TIH 5 STAND'S AND CIRCULATE AND COND. BUILDING VOLUME MUD WT. 8.5 VIS 49 LCM 30% STILL TAKING SMALL LOSSES INTERMITTENTLY @ 7787' TIH TO 8084'TAG,WASH TO 8100, CIRCULATE AND CONDITION. WASH TO 8166' TD.



Well Operations Summary L48

Well Name: SAN JUAN 29-7 UNIT NP #512 ST1

API: 3003924342	Field: BASIN (FRUITLAND COAL)	State: NEW MEXICO
Permit to Drill (PTD) #:	Sundry #:	Rig/Service: DWS 32

Jobs

Actual Start Date: 8/26/2024End Date:

Report Number 1	Report Start Date 8/26/2024	Report End Date 8/26/2024
--------------------	--------------------------------	------------------------------

Operation

TRAVEL TO SAN JUAN 29-7 UNIT #562.
LOAD EQUIP. RIG MOVE SAFETY MEETING. MOB RIG & EQUIP TO SAN JUAN 29-7 NP #512 (14 MILE MOVE). 4 RIG UP TRUCKS.
MIRU RIG & EQUIP. R/U FLOOR AND TUBING HANDLING EQUIPMENT.
PJSM. SICP- 0 PSI, SITP- 0 PSI, SIBHP- 0 PSI. BDW IN 0 MIN.
N/D WELLHEAD AND N/U BOP. FUNCTION TEST BOP, (GOOD)
M/U 3 7/8" STRING MILL/JUNK MILL, TALLY AND TIH W/TBG TO 6069'. TAG PU POWER SWVL, RU PUMP, BEGIN TO CIRCULATE W/WATER, **BEGIN TO DRILL OUT CMNT, WIPER PLUG**. CIRCULATE CLEAN
SIW, SECURE LOCATION, SDFN.
CREW TRAVEL TO YARD.

Report Number 2	Report Start Date 8/27/2024	Report End Date 8/27/2024
--------------------	--------------------------------	------------------------------

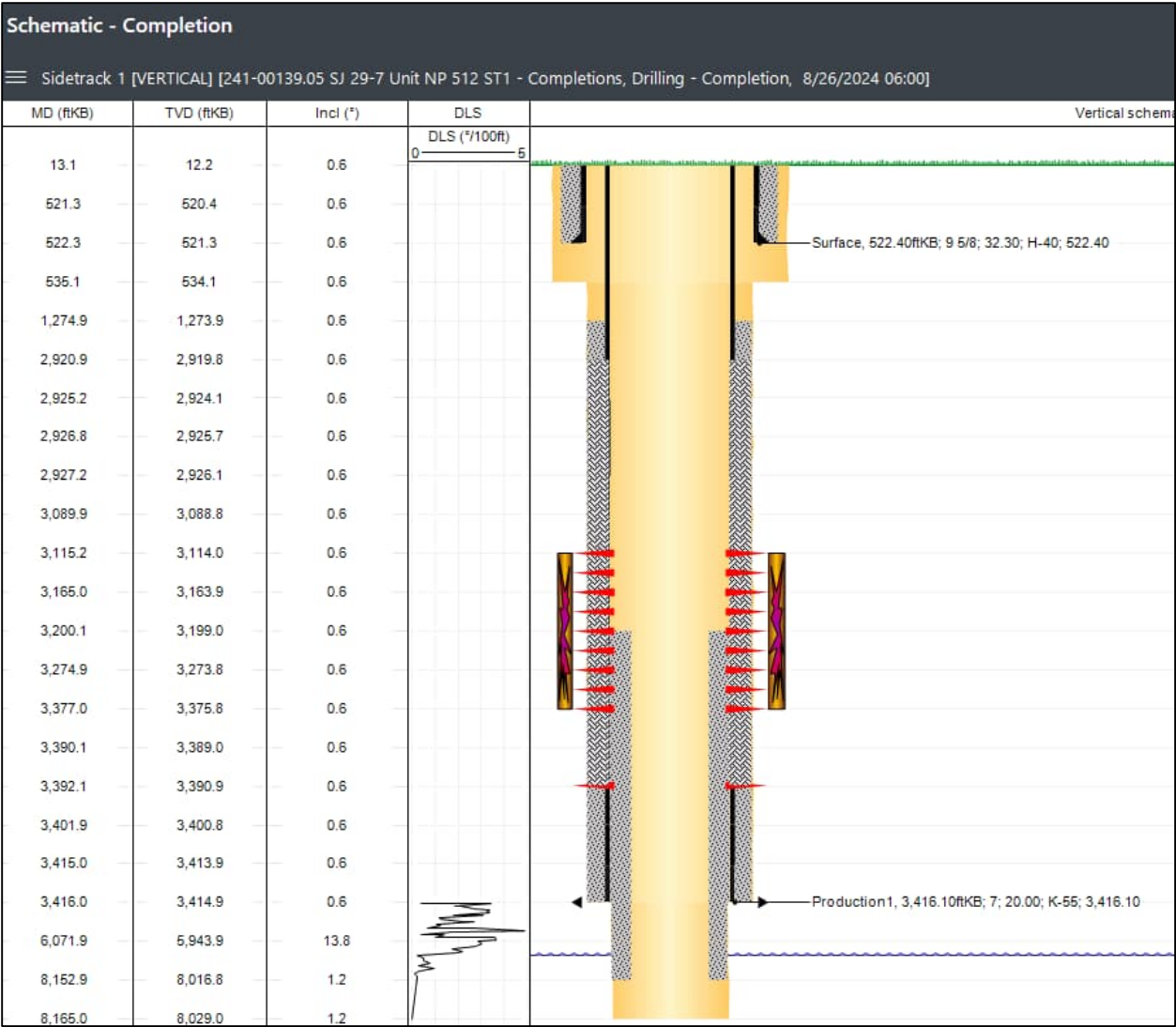
Operation

CREW TRAVEL TO LOCATION
HELD PJSM, CREW CHECK PRESSURE CSG (0 PSI), TBG (0 PSI) BDW 0 MIN.
PU POWER SWVL, RU PUMP, BEGIN TO CIRCULATE W/WATER, **CONTINUE TO DRILL OUT WIPER PLUG**. CIRCULATE CLEAN, PU 3 JOINTS, RACK BACK POWER SWVL, TALLY, PU TBG TO 8170' TAG BREAK CIRCULATION CIRCULATE CLEAN. TOOH LD/ STRING MILL
RU WIRELINE **RUN CBL, RUN NUTRON CBL**, RIGDOWN WIRELINE, DUE MOCK (600PSI) TEST (GOOD). **TOC @ 5470'**.
SHUTDOWN, SECURE WELL, DEBRIEF CREW
CREW TRAVEL TO YARD

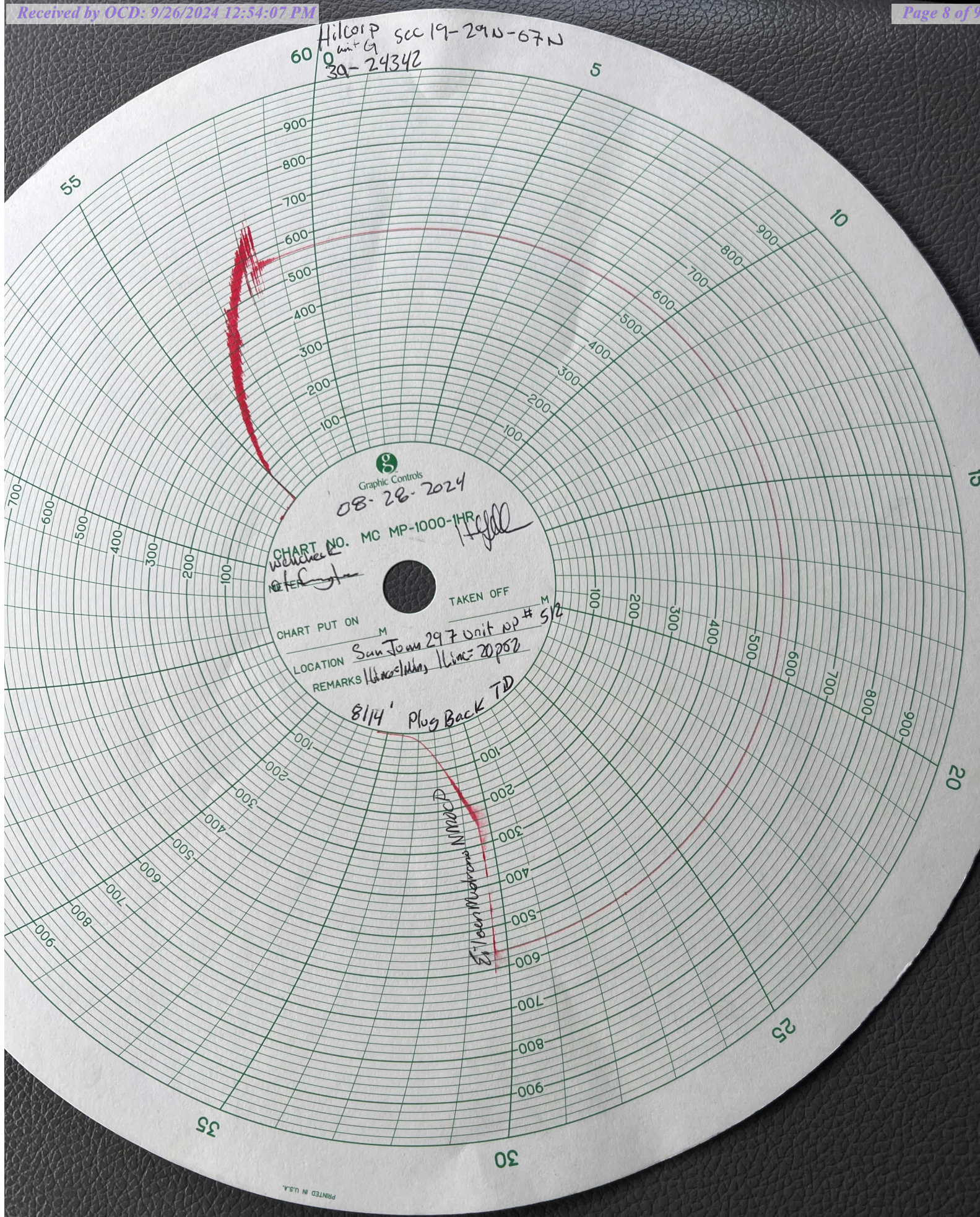
Report Number 3	Report Start Date 8/28/2024	Report End Date 8/28/2024
--------------------	--------------------------------	------------------------------

Operation

CREW TRAVEL TO LOCATION
HELD PJSM, CREW CHECK PRESSURE CSG (0 PSI), TBG (0 PSI) BDW 0 MIN.
RU WELLCHECK. **RUN MIT, (560PSI) WITNESSED BY EILEEN MEDRANO W/ NMOCD, TEST CASING TO (4500PSI) GOOD TEST**, RD WELL CHECK, TIH. LD TUBING 259 JOINTS
SHUTDOWN, SECURE WELL, DEBRIEF CREW
CREW TRAVEL TO YARD



Hilcorp sec 19-29N-67W
unit G
39-24342



PRINTED IN U.S.A.

District I
1625 N. French Dr., Hobbs, NM 88240
Phone:(575) 393-6161 Fax:(575) 393-0720
District II
811 S. First St., Artesia, NM 88210
Phone:(575) 748-1283 Fax:(575) 748-9720
District III
1000 Rio Brazos Rd., Aztec, NM 87410
Phone:(505) 334-6178 Fax:(505) 334-6170
District IV
1220 S. St Francis Dr., Santa Fe, NM 87505
Phone:(505) 476-3470 Fax:(505) 476-3462

State of New Mexico
Energy, Minerals and Natural Resources
Oil Conservation Division
1220 S. St Francis Dr.
Santa Fe, NM 87505

CONDITIONS

Action 387417

CONDITIONS

Operator: HILCORP ENERGY COMPANY 1111 Travis Street Houston, TX 77002	OGRID: 372171
	Action Number: 387417
	Action Type: [C-103] Sub. Drilling (C-103N)

CONDITIONS

Created By	Condition	Condition Date
smcgrath	Post cement remediation sundry previously approved under Action ID 383466.	9/27/2024