

Well Name: MKL 7	Well Location: T26N / R7W / SEC 7 / SENE / 36.502934 / -107.609641	County or Parish/State: RIO ARRIBA / NM
Well Number: 3	Type of Well: CONVENTIONAL GAS WELL	Allottee or Tribe Name:
Lease Number: NMSF079162	Unit or CA Name:	Unit or CA Number:
US Well Number: 300392668000S2	Operator: CROSS TIMBERS ENERGY LLC	

Subsequent Report

Sundry ID: 2811163

Type of Submission: Subsequent Report      Type of Action: Plug and Abandonment

Date Sundry Submitted: 09/10/2024      Time Sundry Submitted: 10:20

Date Operation Actually Began: 08/15/2024

Actual Procedure: Cross Timbers Energy, LLC has plugged and abandoned the MKL7 #3 as of 8/29/2024. Attached are the Daily Reports, Plug Detail, Final WBD, and marker photo.

SR Attachments

Actual Procedure

MKL\_7\_\_003\_PA\_Daily\_Reports\_\_Plug\_Detail\_\_WBD\_\_Marker\_Photo\_20240910102006.pdf

Well Name: MKL 7	Well Location: T26N / R7W / SEC 7 / SENE / 36.502934 / -107.609641	County or Parish/State: RIO ARRIBA / NM
Well Number: 3	Type of Well: CONVENTIONAL GAS WELL	Allottee or Tribe Name:
Lease Number: NMSF079162	Unit or CA Name:	Unit or CA Number:
US Well Number: 300392668000S2	Operator: CROSS TIMBERS ENERGY LLC	

Operator

I certify that the foregoing is true and correct. Title 18 U.S.C. Section 1001 and Title 43 U.S.C. Section 1212, make it a crime for any person knowingly and willfully to make to any department or agency of the United States any false, fictitious or fraudulent statements or representations as to any matter within its jurisdiction. Electronic submission of Sundry Notices through this system satisfies regulations requiring a

Operator Electronic Signature: CONNIE BLAYLOCK

Signed on: SEP 10, 2024 10:20 AM

Name: CROSS TIMBERS ENERGY LLC

Title: Regulatory Technician

Street Address: 400 W 7th St.

City: Forth Worth

State: TX

Phone: (817) 334-7882

Email address: CBLAYLOCK@MSPARTNERS.COM

Field

Representative Name: Amy Byars

Street Address:

City:

State:

Zip:

Phone:

Email address: abyars@mspartners.com

BLM Point of Contact

BLM POC Name: MATTHEW H KADE

BLM POC Title: Petroleum Engineer

BLM POC Phone: 5055647736

BLM POC Email Address: MKADE@BLM.GOV

Disposition: Accepted

Disposition Date: 09/11/2024

Signature: Matthew Kade

## Cross Timbers Energy LLC

### Plug And Abandonment End of Well Report

#### MKL 7 #003

1960' FNL & 730' FEL, Section 7, 26N, 07W

Rio Arriba, NM / API 30-039-26680

#### Work Summary:

- 8/14/24** Made BLM and NMOCD P&A operations notifications at 9:00 AM MST.
- 8/15/24** Completed pre-trip inspection. Moved unit to location. Held safety meeting. Checked location for H2S and other gas. Checked well pressures (Casing 0 psi, BH 0 psi, Tubing 0 psi). Spot in unit and equipment. R/U unit and equipment. ND WH, NU BOP, R/U floor and equipment. Change out equipment for 2-3/8" tubing. Worked stuck tubing anchor. TOOH with 78 2-3/8" joints. Got hung up while tripping out of hole. Worked stuck tubing but was unable to free the string. R/U cementing services. Pumped 66 bbls of water down casing. Following, pumped 500 gallons of acid. Pumped 17 bbls of water and casing pressured up. Let pressure bleed down. Pumped 4 bbls of water, again casing pressured up. Continued this process with 4 bbls, followed by 5 bbls (30 bbls total). R/D cementers. Shut in and secured well.
- 8/16/24** Arrived on location. Held safety meeting. Checked location for H2S and other gas. Checked well pressures (Casing 0 psi, BH 0 psi, Tubing 0 psi). Worked stuck tubing. Tubing came loose. Dragging 3 joints. TOOH with 201, 2-3/8" joints. Wait on orders. Shut in and secured well.
- 8/19/24** Arrived on location. Held safety meeting. Checked location for H2S and other gas. Checked well pressures (Casing 0 psi, BH 0 psi, Tubing 0 psi). R/U wireline services. RIH with 4.5" gauge ring. Tagged at 3374'. TOOH. Removed gauge ring. P/U impression block. RIH and tagged at 3374'. TOOH. At surface impression block looks like a 3/4" pin facing up. R/D wireline. Prepped and tallied tubing. P/U overshot. TIH and tagged fish at 3374'. Successfully latched onto

fish. Worked fish. TOOH with overshot and fish. L/D 52 ¾" stick rods and a broken ¾" rod measuring 1'. Shut in and secured well for the day.

**8/20/24** Arrived on location. Held safety meeting. Checked location for H2S and other gas. Checked well pressures (Casing 0 psi, BH 0 psi, Tubing 0 psi). R/U wireline services. RIH with a 4.5" gauge ring. Tagged at 3962'. POOH. R/D wireline services. P/U 5.5" Casing scraper. TIH and tagged hard at 3974'. Worked casing scraper through tight spot from 3974' to 4086'. Continued to TIH to 4643'. TOOH. L/D scraper. P/U overshot. TIH and tagged top of fish at 4709'. Latched onto fish. Worked fish and broke it loose. TOOH with all tubing, overshot, and rods. Shut in and secured well for the day.

**8/21/24** Arrived on location. Held safety meeting. Checked location for H2S and other gas. Checked well pressures (Casing 0 psi, BH 0 psi, Tubing 0 psi). TIH with overshot. Tagged top of fish at 4742'. Latched onto fish. Worked fish. TOOH with nothing in overshot. Change out grapples. TIH and tagged top of fish at 4742'. Attempted to latch onto fish but was unsuccessful. R/U cementing services. pumped water down tubing. Pumped 68 bbls to fill casing. Attempted to inject into perforations be the well pressured up after 2 bbls. R/D cementers. TOOH to 1462'. Shut in and secured well.

**8/22/24** Arrived on location. Held safety meeting. Checked location for H2S and other gas. Checked well pressures (Casing 0 psi, BH 0 psi, Tubing 0 psi). TOOH. Removed grapple from overshot. TIH and tagged at 4742'. Attempted to work through with no luck. R/U cementing services. Circulated well with 37 bbls, pumped 78 bbls total. Attempted to pressure test casing but was unsuccessful, 600 psi to 360 psi in 5 minutes. R/D cementers. TOOH. R/U wireline services. RIH and logged well. R/D wireline services. Shut in and secured well.

**8/23/24** Arrived on location. Held safety meeting. Checked location for H2S and other gas. Checked well pressures (Casing 0 psi, BH 0 psi, Tubing 0 psi). P/U 5.5" CR. TIH and tagged a tight spot at 4233'. Could not work through. TOOH. CR was not on tubing. P/U drill bit. TIH and tagged CR at 4233'. R/U power swivel and pump. Drilled CR. Did not get through. R/D pump and power swivel. TOOH. Shut in and secured well.

**8/26/24** Arrived on location. Held safety meeting. Checked location for H2S and other gas. Checked well pressures (Casing 0 psi, BH 0 psi, Tubing 0 psi). P/U 4-3/4" mill. TIH and tagged at 4233'. R/U power swivel and pump. Mill on CR from 4233' to 4240'. Successfully milled through. R/D pump and power swivel. TIH and tagged at 4729'.

TOOH. L/D mill. Installed 5.5" casing scraper. TIH to 3734'. Shut in and secured well.

**8/27/24** Arrived on location. Held safety meeting. Checked location for H2S and other gas. Checked well pressures (Casing 0 psi, BH 0 psi, Tubing 0 psi). Finished TIH with casing scraper. Tagged at 4729'. TOOH. L/D scraper. P/U 5.5" CR. TIH and set CR at 4729'. R/U cementing services. Pressure tested tubing to 800 psi. Attempted to establish an injection rate below the CR but was unable to, the casing pressured up. Sting out of CR. Attempted to pressure test casing but was unsuccessful, 600 psi to 240 psi in 5 minutes. Pumped plug #1 from 4729' to 4480', R/D cementers. L/D 8 joints. Reverse circulated at 4447'. TOOH. WOC 4 hours. TIH and tagged plug #1 at 4447'. L/D 20 joints. R/U cementing services. Attempted to pressure test casing but was unsuccessful, 600 psi to 500 psi in 5 minutes. Pumped plug #2 from 3780' to 3630'. R/D cementers. L/D 6 joints. Reverse circulated at 3603'. TOOH. WOC overnight. Shut in and secured well and equipment.

**8/28/24** Arrived on location. Held safety meeting. Checked location for H2S and other gas. Checked well pressures (Casing 0 psi, BH 0 psi, Tubing 0 psi). TIH and tagged plug #2 at 3636'. L/D 16 joints. R/U cementing services. Successfully pressure tested casing to 600 psi for 5 minutes. Successfully pressure tested BH to 600 psi for 5 minutes. Pumped plug #3 from 3110' to 2960'. R/D cementers. L/D 27 joints. R/U cementing services. Pumped plug #4 from 2245' to 1844'. R/D cementers. L/D 20 joints. R/U cementing services. Pumped plug #5 from 1570' to 1050'. R/D cementers. L/D 25 joints. R/U cementers. Pumped plug #6 from 433' to surface. R/D cementers. L/D all tubing. R/D floor and equipment. ND BOP, NU WH. Shut in and secured well.

**8/29/24** Arrived on location. Held safety meeting. Checked location for H2S and other gas. Checked well pressures (Casing 0 psi, BH 0 psi, Tubing 0 psi). Dug around WH. R/U welder on location. Cut off old WH. Cement was at surface in 5.5" casing and 67' low in 9.6" casing. Weld P&A marker in place per all local regulations. R/D welder. R/U cementing services. Pumped cement from 67' to surface and filled the cellar. R/D cementers. R/D unit and all equipment. Prepare to MOL.

**Plug Summary: All cement Class G, 15.8 ppg, 1.15 cu ft/sk yield****Plug #1: (Perforations, Mancos Formation Top, 4,729'-4,447', 28 Sacks Class G Cement)**

P/U scraper. TIH with casing scraper. Tagged at 4729'. TOOH. L/D scraper. P/U 5.5" CR. TIH and set CR at 4729'. R/U cementing services. Attempted to establish an injection rate below the CR but was unable to, the casing pressured up. Sting out of CR. Attempted to pressure test casing but was unsuccessful, 600 psi to 240 psi in 5 minutes. Pumped plug #1 from 4729' to 4480', R/D cementers. L/D 8 joints. Reverse circulated at 4447'. TOOH. WOC 4 hours. TIH and tagged plug #1 at 4447'.

**Plug #2: (Mesa Verde Formation Top, 3,780'-3,636', 17 Sacks Class G Cement)**

Pumped plug #2 from 3780' to 3630'. R/D cementers. L/D 6 joints. Reverse circulated at 3603'. TOOH. WOC overnight. TIH and tagged plug #2 at 3636'.

**Plug #3: (Chacra Formation Top, 3,110'-2,960', 17 Sacks Class G Cement)**

Successfully pressure tested casing to 600 psi for 5 minutes. Successfully pressure tested BH to 600 psi for 5 minutes. Pumped plug #3 from 3110' to 2960'. R/D cementers. L/D 27 joints.

**Plug #4: (Pictured Cliffs and Fruitland Formation Tops, 2,245'-1,844', 46 Sacks Class G Cement)**

R/U cementing services. Pumped plug #4 from 2245' to 1844'. R/D cementers. L/D 20 joints.

**Plug #5: (Kirtland and Ojo Alamo Formation Tops, 1,570'-1,050', 59 Sacks Class G Cement)**

R/U cementing services. Pumped plug #5 from 1570' to 1050'. R/D cementers.

**Plug #6: (Nacimiento Formation Top and Surface Casing Shoe, 433'-Surface', 77 Sacks Class G Cement) (17 Sacks Class G top off) (Inside/Outside)**

R/U cementers. Pumped plug #6 from 433' to surface. R/D cementers. Dug around WH. R/U welder on location. Cut off old WH.

Cement was at surface in 5.5" casing and 67' low in 9.6" casing. Weld P&A marker in place per all local regulations. R/D welder. R/U cementing services. Pumped cement from 67' to surface and filled the cellar. R/D cementers.

Completed Wellbore Diagram

Cross Timbers Energy, LLC  
MKL 7 #003  
API: 30-039-26680  
Rio Arriba, New Mexico

Plug 6

433 feet - Surface  
433 foot plug  
77 Sacks of Class G Cement

Plug 5

1507 feet - 1050 feet  
457 foot plug  
59 Sacks of Class G Cement

Plug 4

2245 feet - 1844 feet  
401 foot plug  
46 sacks of Class G Cement

Plug 3

3110 feet - 2960 feet  
150 foot plug  
17 Sacks of Class G Cement

Plug 2

3780 feet - 3636 feet  
144 foot plug  
17 Sacks of Class G Cement

Plug 1

4729 feet - 4447 feet  
282 foot plug  
28 sacks of Class G Cement

Perforations

6576 feet - 6657 feet

Surface Casing

9.625" 36# @ 383'  
OH: 12.25"

Formation Tops

Nacimiento - surface  
Ojo Alamo - 1180'  
Kirtland - 1456'  
Fruitland - 1906'  
Picture Cliffs - 2090'  
Chacra - 2985'  
Mesa Verde - 3688'  
Mancos - 4506'  
Gallup - 5722'  
Dakota - 6316'

CR at 4729'

Production Casing  
5.5" 17# @ 6852'  
OH: 7.875"

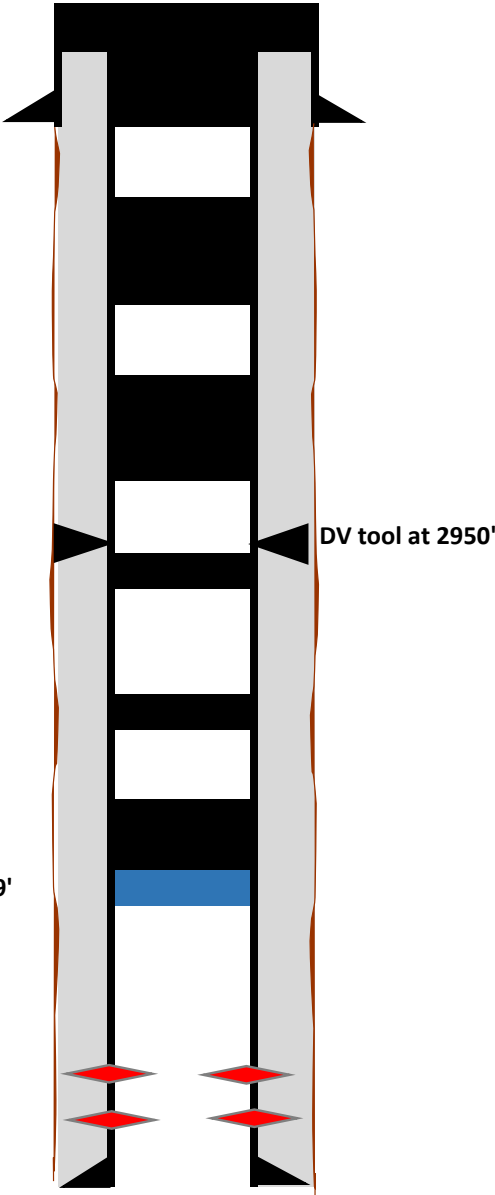






Figure 1: Marker



Figure 2: Top Off



Figure 3: Cut Off

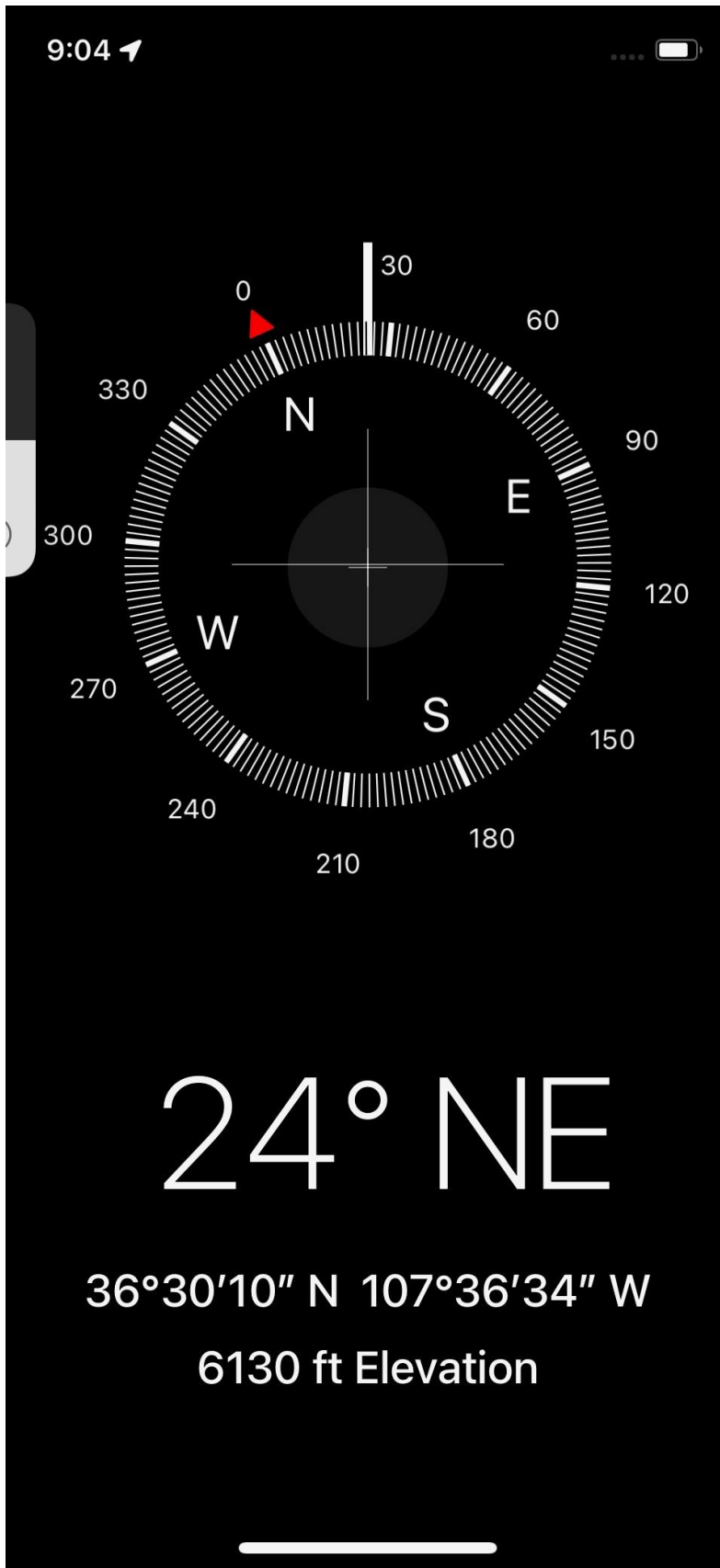


Figure 4: GPS

**From:** [Kuehling, Monica, EMNRD](#)  
**To:** [Ethan Wakefield](#)  
**Cc:** [Chad Cole](#); [Robert W. Berry \(c\)](#)  
**Subject:** EXTERNAL:Re: [EXTERNAL] MKL 7 #3  
**Date:** Friday, August 23, 2024 7:52:04 AM  
**Attachments:** [image001.png](#)

---

**This email contains a link!**

This email contains a World Wide Web link. Use caution when following links as they could open malicious web sites.

- Helpdesk

---

Nmocd approved verbally 8/22/2024  
THANK YOU  
Monica Kuehling  
NMOCD

Get [Outlook for iOS](#)

---

**From:** Ethan Wakefield <e.wakefield@dwsrigs.com>  
**Sent:** Friday, August 23, 2024 6:48:44 AM  
**To:** Kuehling, Monica, EMNRD <monica.kuehling@emnrd.nm.gov>  
**Cc:** Chad Cole <chaddcole69@gmail.com>; Robert W. Berry <RBerry@txopartners.com>  
**Subject:** [EXTERNAL] MKL 7 #3

CAUTION: This email originated outside of our organization. Exercise caution prior to clicking on links or opening attachments.

Good Morning, Monica,

I was informed and saw some messages stating that we have approval to continue with plugging operations on the MKL 7 #3 from our current depth of 4742'. I am just writing to have clear documentation of this approval.

The CBL has already been ran from this depth.

Thanks!

Ethan Wakefield



607 W. Pinon St.  
Farmington, NM 87401  
Cell: 405-343-7736  
[e.wakefield@dwsrigs.com](mailto:e.wakefield@dwsrigs.com)



**From:** [Carlos Gutierrez](#)  
**To:** [Robert W. Berry \(c\)](#)  
**Subject:** EXTERNAL:Fwd: [EXTERNAL] MKL 7 #3  
**Date:** Thursday, September 5, 2024 4:01:46 PM

---

Sent from my iPhone

Begin forwarded message:

**From:** "Kuehling, Monica, EMNRD" <[monica.kuehling@emnrd.nm.gov](mailto:monica.kuehling@emnrd.nm.gov)>  
**Date:** September 5, 2024 at 1:49:46 PM MDT  
**To:** Carlos Gutierrez <[carlos@dwsrigs.com](mailto:carlos@dwsrigs.com)>  
**Subject:** RE: [EXTERNAL] MKL 7 #3

Approval was given verbally 8/29/2024

Please Note: review all COAs from all agencies. Further disregard could mean expense of drill out.

Thank you

Monica Kuehling  
Compliance Officer Supervisor  
Deputy Oil and Gas Inspector  
New Mexico Oil Conservation Division  
North District  
Office Phone: 505-334-6178 ext. 123  
Cell Phone: 505-320-0243  
Email - [monica.kuehling@emnrd.nm.gov](mailto:monica.kuehling@emnrd.nm.gov)

-----Original Message-----

From: Carlos Gutierrez <[carlos@dwsrigs.com](mailto:carlos@dwsrigs.com)>  
Sent: Thursday, September 5, 2024 12:11 PM  
To: Kuehling, Monica, EMNRD <[monica.kuehling@emnrd.nm.gov](mailto:monica.kuehling@emnrd.nm.gov)>  
Subject: Re: [EXTERNAL] MKL 7 #3

API # 30-039-26680  
MesaVerde plug- 3780' - 3630'  
Chacra plug - 3110' - 2850'  
PC/Fruitand plug- 2245' - 1894'

Sent from my iPhone

On Sep 5, 2024, at 11:38 AM, Kuehling, Monica, EMNRD  
<monica.kuehling@emnrd.nm.gov> wrote:

Please send more info

Like

Api number

I remember this sorta

I did go through Engineering to double check The top of the plug  
below

and where you started the one above.

Monica

-----Original Message-----

From: Carlos Gutierrez <carlos@dwsrigs.com>

Sent: Thursday, September 5, 2024 11:23 AM

To: Kuehling, Monica, EMNRD <monica.kuehling@emnrd.nm.gov>

Subject: [EXTERNAL] MKL 7 #3

CAUTION: This email originated outside of our organization.  
Exercise caution prior to clicking on links or opening attachments.

Good morning Monica, I know we talked on the phone but can I get  
an

approval on this well where I didn't catch your conditions on the

Chacra formation and pumped the plug from 3110' to 2960' instead  
of

2850', thank you Sent from my iPhone



**District I**  
1625 N. French Dr., Hobbs, NM 88240  
Phone:(575) 393-6161 Fax:(575) 393-0720  
**District II**  
811 S. First St., Artesia, NM 88210  
Phone:(575) 748-1283 Fax:(575) 748-9720  
**District III**  
1000 Rio Brazos Rd., Aztec, NM 87410  
Phone:(505) 334-6178 Fax:(505) 334-6170  
**District IV**  
1220 S. St Francis Dr., Santa Fe, NM 87505  
Phone:(505) 476-3470 Fax:(505) 476-3462

**State of New Mexico**  
**Energy, Minerals and Natural Resources**  
**Oil Conservation Division**  
**1220 S. St Francis Dr.**  
**Santa Fe, NM 87505**

CONDITIONS  
  
Action 382611

CONDITIONS

Operator: CROSS TIMBERS ENERGY, LLC 400 West 7th Street Fort Worth, TX 76102	OGRID: 298299
	Action Number: 382611
	Action Type: [C-103] Sub. Plugging (C-103P)

CONDITIONS

Created By	Condition	Condition Date
mkuehling	well plugged 8/29/2024	9/27/2024