

Form 3160-3
(June 2015)UNITED STATES
DEPARTMENT OF THE INTERIOR
BUREAU OF LAND MANAGEMENT
APPLICATION FOR PERMIT TO DRILL OR REENTERFORM APPROVED
OMB No. 1004-0137
Expires: January 31, 2018

1a. Type of work: <input checked="" type="checkbox"/> DRILL <input type="checkbox"/> REENTER			5. Lease Serial No. NMNM100255
1b. Type of Well: <input checked="" type="checkbox"/> Oil Well <input type="checkbox"/> Gas Well <input type="checkbox"/> Other			6. If Indian, Allottee or Tribe Name
1c. Type of Completion: <input type="checkbox"/> Hydraulic Fracturing <input checked="" type="checkbox"/> Single Zone <input type="checkbox"/> Multiple Zone			7. If Unit or CA Agreement, Name and No.
2. Name of Operator COLGATE OPERATING, LLC			8. Lease Name and Well No. BONDI 24 FED COM 132H
3a. Address 300 N MARIENFELD ST SUITE 1000, MIDLAND, TX 79701		3b. Phone No. (include area code) (432) 695-4222	9. API Well No. 30-015-55473
4. Location of Well (Report location clearly and in accordance with any State requirements. *) At surface NENE / 814 FNL / 490 FEL / LAT 32.584183 / LONG -104.123905 At proposed prod. zone SWNW / 1656 FNL / 10 FWL / LAT 32.561854 / LONG -104.156889			10. Field and Pool, or Exploratory AVALON/Bone Spring, East
14. Distance in miles and direction from nearest town or post office*			11. Sec., T. R. M. or Blk. and Survey or Area SEC 24/T20S/R28E/NMP
15. Distance from proposed* location to nearest property or lease line, ft. (Also to nearest drig. unit line, if any) 490 feet		16. No of acres in lease	12. County or Parish EDDY
17. Spacing Unit dedicated to this well 320.0		13. State NM	
18. Distance from proposed location* to nearest well, drilling, completed, applied for, on this lease, ft. 0 feet		19. Proposed Depth 8950 feet / 10425 feet	20. BLM/BIA Bond No. in file FED: NMB001841
21. Elevations (Show whether DF, KDB, RT, GL, etc.) 3247 feet		22. Approximate date work will start* 08/31/2024	23. Estimated duration 90 days
24. Attachments			

The following, completed in accordance with the requirements of Onshore Oil and Gas Order No. 1, and the Hydraulic Fracturing rule per 43 CFR 3162.3-3 (as applicable)

- | | |
|--|---|
| 1. Well plat certified by a registered surveyor. | 4. Bond to cover the operations unless covered by an existing bond on file (see Item 20 above). |
| 2. A Drilling Plan. | 5. Operator certification. |
| 3. A Surface Use Plan (if the location is on National Forest System Lands, the SUPO must be filed with the appropriate Forest Service Office). | 6. Such other site specific information and/or plans as may be requested by the BLM. |

25. Signature (Electronic Submission)	Name (Printed/Typed) STEPHANIE RABADUE / Ph: (432) 695-4222	Date 02/23/2024
Title Regulatory Manager		
Approved by (Signature) (Electronic Submission)	Name (Printed/Typed) CODY LAYTON / Ph: (575) 234-5959	Date 09/19/2024
Title Assistant Field Manager Lands & Minerals		

Application approval does not warrant or certify that the applicant holds legal or equitable title to those rights in the subject lease which would entitle the applicant to conduct operations thereon.

Conditions of approval, if any, are attached.

Title 18 U.S.C. Section 1001 and Title 43 U.S.C. Section 1212, make it a crime for any person knowingly and willfully to make to any department or agency of the United States any false, fictitious or fraudulent statements or representations as to any matter within its jurisdiction.



(Continued on page 2)

*(Instructions on page 2)

INSTRUCTIONS

GENERAL: This form is designed for submitting proposals to perform certain well operations, as indicated on Federal and Indian lands and leases for action by appropriate Federal agencies, pursuant to applicable Federal laws and regulations. Any necessary special instructions concerning the use of this form and the number of copies to be submitted, particularly with regard to local, area, or regional procedures and practices, either are shown below or will be issued by, or may be obtained from local Federal offices.

ITEM I: If the proposal is to redrill to the same reservoir at a different subsurface location or to a new reservoir, use this form with appropriate notations. Consult applicable Federal regulations concerning subsequent work proposals or reports on the well.

ITEM 4: Locations on Federal or Indian land should be described in accordance with Federal requirements. Consult local Federal offices for specific instructions.

ITEM 14: Needed only when location of well cannot readily be found by road from the land or lease description. A plat, or plats, separate or on the reverse side, showing the roads to, and the surveyed location of, the well, and any other required information, should be furnished when required by Federal agency offices.

ITEMS 15 AND 18: If well is to be, or has been directionally drilled, give distances for subsurface location of hole in any present or objective productive zone.

ITEM 22: Consult applicable Federal regulations, or appropriate officials, concerning approval of the proposal before operations are started.

ITEM 24: If the proposal will involve hydraulic fracturing operations, you must comply with 43 CFR 3162.3-3, including providing information about the protection of usable water. Operators should provide the best available information about all formations containing water and their depths. This information could include data and interpretation of resistivity logs run on nearby wells. Information may also be obtained from state or tribal regulatory agencies and from local BLM offices.

NOTICES

The Privacy Act of 1974 and regulation in 43 CFR 2.48(d) provide that you be furnished the following information in connection with information required by this application.

AUTHORITY: 30 U.S.C. 181 et seq., 25 U.S.C. 396; 43 CFR 3160

PRINCIPAL PURPOSES: The information will be used to: (1) process and evaluate your application for a permit to drill a new oil, gas, or service well or to reenter a plugged and abandoned well; and (2) document, for administrative use, information for the management, disposal and use of National Resource Lands and resources including (a) analyzing your proposal to discover and extract the Federal or Indian resources encountered; (b) reviewing procedures and equipment and the projected impact on the land involved; and (c) evaluating the effects of the proposed operation on the surface and subsurface water and other environmental impacts.

ROUTINE USE: Information from the record and/or the record will be transferred to appropriate Federal, State, and local or foreign agencies, when relevant to civil, criminal or regulatory investigations or prosecution, in connection with congressional inquiries and for regulatory responsibilities.

EFFECT OF NOT PROVIDING INFORMATION: Filing of this application and disclosure of the information is mandatory only if you elect to initiate a drilling or reentry operation on an oil and gas lease.

The Paperwork Reduction Act of 1995 requires us to inform you that:

The BLM connects this information to an evaluation of the technical, safety, and environmental factors involved with drilling for oil and/or gas on Federal and Indian oil and gas leases. This information will be used to analyze and approve applications. Response to this request is mandatory only if the operator elects to initiate drilling or reentry operations on an oil and gas lease. The BLM would like you to know that you do not have to respond to this or any other Federal agency-sponsored information collection unless it displays a currently valid OMB control number.

BURDEN HOURS STATEMENT: Public reporting burden for this form is estimated to average 8 hours per response, including the time for reviewing instructions, gathering and maintaining data, and completing and reviewing the form. Direct comments regarding the burden estimate or any other aspect of this form to U.S. Department of the Interior, Bureau of Land Management (1004-0137), Bureau Information Connection Clearance Officer (WO-630), 1849 C Street, N.W., Mail Stop 401 LS, Washington, D.C. 20240.

Additional Operator Remarks

Location of Well

O. SHL: NENE / 814 FNL / 490 FEL / TWSP: 20S / RANGE: 28E / SECTION: 24 / LAT: 32.564183 / LONG: -104.123905 (TVD: 0 feet, MD: 0 feet)
PPP: SENE / 1656 FNL / 100 FEL / TWSP: 20S / RANGE: 28E / SECTION: 24 / LAT: 32.561869 / LONG: -104.122672 (TVD: 8950 feet, MD: 9400 feet)
PPP: SESE / 1659 FNL / 0 FEL / TWSP: 20S / RANGE: 28E / SECTION: 23 / LAT: 32.561863 / LONG: -104.139667 (TVD: 8950 feet, MD: 14200 feet)
PPP: SENW / 1657 FNL / 2654 FWL / TWSP: 20S / RANGE: 28E / SECTION: 23 / LAT: 32.561858 / LONG: -104.148288 (TVD: 8950 feet, MD: 16800 feet)
PPP: SENW / 1658 FNL / 2668 FWL / TWSP: 20S / RANGE: 28E / SECTION: 24 / LAT: 32.561866 / LONG: -104.131008 (TVD: 8950 feet, MD: 11600 feet)
PPP: SWNW / 1659 FNL / 1334 FWL / TWSP: 20S / RANGE: 28E / SECTION: 24 / LAT: 32.561864 / LONG: -104.135337 (TVD: 8950 feet, MD: 12900 feet)
BHL: SWNW / 1656 FNL / 10 FWL / TWSP: 20S / RANGE: 28E / SECTION: 23 / LAT: 32.561854 / LONG: -104.156869 (TVD: 8950 feet, MD: 19425 feet)

BLM Point of Contact

Name: JANET D ESTES
Title: ADJUDICATOR
Phone: (575) 234-6233
Email: JESTES@BLM.GOV

Review and Appeal Rights

A person contesting a decision shall request a State Director review. This request must be filed within 20 working days of receipt of the Notice with the appropriate State Director (see 43 CFR 3165.3). The State Director review decision may be appealed to the Interior Board of Land Appeals, 801 North Quincy Street, Suite 300, Arlington, VA 22203 (see 43 CFR 3165.4). Contact the above listed Bureau of Land Management office for further information.

District I
1625 N. French Dr., Hobbs, NM 88240
Phone: (505) 393-6161 Fax: (505) 393-0720
District II
811 S. First St., Artesia, NM 88210
Phone: (505) 748-1283 Fax: (505) 748-9720
District III
1000 Rio Raros Road, Aztec, NM 87410
Phone: (505) 334-6178 Fax: (505) 334-6170
District IV
1220 S. St. Francis Dr., Santa Fe, NM 87503
Phone: (505) 476-3460 Fax: (505) 476-3462

State of New Mexico
Energy, Minerals & Natural Resources Department
OIL CONSERVATION DIVISION
1220 South St. Francis Dr.
Santa Fe, NM 87505

Form C-102
Revised August 1, 2011
Submit one copy to appropriate
District Office

☐ AMENDED REPORT

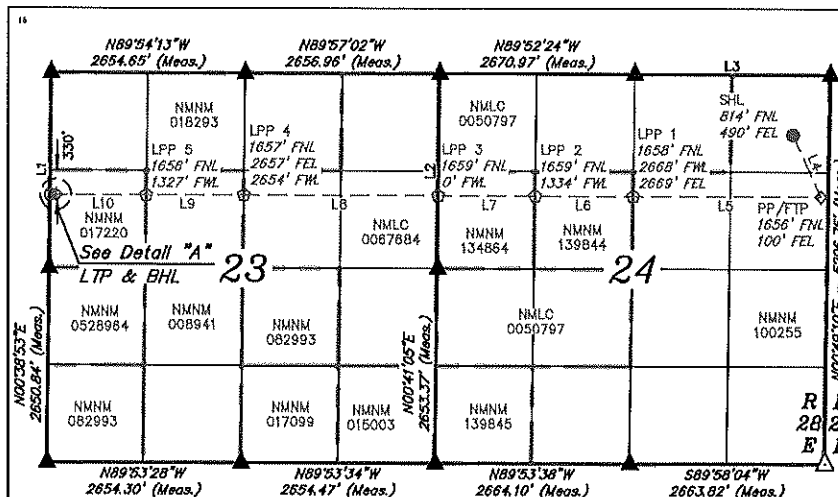
WELL LOCATION AND ACREAGE DEDICATION PLAT

1 API Number 30-015-55473		2 Pool Code 3713		3 Pool Name Avalon; Bone Spring, East	
4 Property Code 335841		4 Property Name BONDI 24 FED COM		6 Well Number 132H	
7 GRID No. 372165		8 Operator Name COLGATE OPERATING, LLC		9 Elevation 3247.4'	

10 Surface Location									
UL or lot no. A	Section 24	Township 20S	Range 28E	Lot Idn	Feet from the 814	North/South line NORTH	Feet from the 490	East/West line EAST	County EDDY

11 Bottom Hole Location If Different From Surface									
UL or lot no. E	Section 23	Township 20S	Range 28E	Lot Idn	Feet from the 1656	North/South line NORTH	Feet from the 10	East/West line WEST	County EDDY
12 Dedicated Acres 320		13 Joint or Infill		14 Consolidation Code		15 Order No.			

No allowable will be assigned to this completion until all interests have been consolidated or a non-standard unit has been approved by the division.



17 OPERATOR
CERTIFICATION

I hereby certify that the information contained herein is true and complete to the best of my knowledge and belief, and that this organization either owns a working interest or unleased mineral interest in the land including the proposed bottom hole location or has a right to drill this well at this location pursuant to a contract with an owner of such a mineral or working interest, or to a voluntary pooling agreement or a compulsory pooling order heretofore entered by the division.

Stephanie Rabadue 8/22/2024

Signature Date

Stephanie Rabadue

Printed Name

stephanie.rabadue@permianres.com

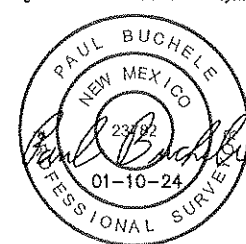
E-mail Address

18 SURVEYOR
CERTIFICATION

I hereby certify that the well location shown on this plat was plotted from field notes of actual surveys made by me or under my supervision, and that the same is true and correct to the best of my belief.

December 5, 2023

Date of Survey
Signature and Seal of Professional Surveyor:



Certificate Number:

SECTION - LINE TABLE		
LINE	DIRECTION	LENGTH
L1	N00°37'08"E	2652.28'
L2	N00°38'34"E	2653.05'
L3	N89°50'29"W	2871.25'

WELLBORE - LINE TABLE		
LINE	DIRECTION	LENGTH
L4	AZ = 155.84°	923.81'
L5	AZ = 270.11°	2588.91'
L6	AZ = 270.11°	1334.11'
L7	AZ = 270.11°	1334.11'
L8	AZ = 270.11°	2858.77'
L9	AZ = 270.11°	1327.06'
L10	AZ = 270.11°	1227.05'
L11	AZ = 270.10°	90.00'

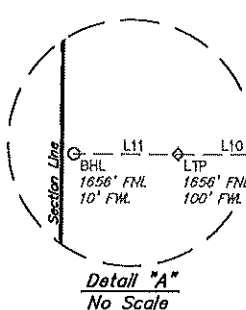


SCALE
DRAWN BY: D.J.S. 12-18-23

NOTE:

- Distances referenced on plat to section lines are perpendicular.
- Basis of Bearings is a Transverse Mercator Projection with a Central Meridian of W103°53'00" (NAD 83)
- Section Breakdown information for this plat may be obtained from Uintah Engineering & Land Surveying.

NAD 83 (SURFACE HOLE LOCATION) LATITUDE = 32°33'51.06" (32.564183°) LONGITUDE = -104°07'26.06" (-104.123905°) NAD 27 (SURFACE HOLE LOCATION) LATITUDE = 32°33'50.63" (32.564065°) LONGITUDE = -104°07'24.24" (-104.123400°) STATE PLANE NAD 83 (N.M. EAST) N: 569041.92' E: 603857.23' STATE PLANE NAD 27 (N.M. EAST) N: 568982.33' E: 564676.84'	NAD 83 (FIRST TAKE POINT) LATITUDE = 32°33'42.71" (32.561869°) LONGITUDE = -104°07'21.62" (-104.122672°) NAD 27 (FIRST TAKE POINT) LATITUDE = 32°33'42.30" (32.561751°) LONGITUDE = -104°07'19.80" (-104.122167°) STATE PLANE NAD 83 (N.M. EAST) N: 568202.86' E: 606238.81' STATE PLANE NAD 27 (N.M. EAST) N: 568141.46' E: 565058.40'	NAD 83 (LPP 1) LATITUDE = 32°33'42.72" (32.561869°) LONGITUDE = -104°07'51.63" (-104.131008°) NAD 27 (LPP 1) LATITUDE = 32°33'42.29" (32.561748°) LONGITUDE = -104°07'49.81" (-104.130503°) STATE PLANE NAD 83 (N.M. EAST) N: 568196.81' E: 603670.48' STATE PLANE NAD 27 (N.M. EAST) N: 568135.44' E: 562490.08'
NAD 83 (LPP 2) LATITUDE = 32°33'42.71" (32.561864°) LONGITUDE = -104°08'07.21" (-104.133337°) NAD 27 (LPP 2) LATITUDE = 32°33'42.29" (32.561746°) LONGITUDE = -104°08'05.40" (-104.134832°) STATE PLANE NAD 83 (N.M. EAST) N: 568193.68' E: 602336.68' STATE PLANE NAD 27 (N.M. EAST) N: 568132.31' E: 561156.28'	NAD 83 (LPP 3) LATITUDE = 32°33'42.71" (32.561863°) LONGITUDE = -104°08'22.80" (-104.139667°) NAD 27 (LPP 3) LATITUDE = 32°33'42.28" (32.561745°) LONGITUDE = -104°08'20.58" (-104.139161°) STATE PLANE NAD 83 (N.M. EAST) N: 568190.54' E: 601002.87' STATE PLANE NAD 27 (N.M. EAST) N: 568129.18' E: 559822.48'	NAD 83 (LPP 4) LATITUDE = 32°33'42.69" (32.561858°) LONGITUDE = -104°08'53.84" (-104.148288°) NAD 27 (LPP 4) LATITUDE = 32°33'42.27" (32.561740°) LONGITUDE = -104°08'52.02" (-104.147783°) STATE PLANE NAD 83 (N.M. EAST) N: 568184.28' E: 598346.71' STATE PLANE NAD 27 (N.M. EAST) N: 568122.95' E: 557166.33'
NAD 83 (LPP 5) LATITUDE = 32°33'42.68" (32.561856°) LONGITUDE = -104°09'09.24" (-104.152395°) NAD 27 (LPP 5) LATITUDE = 32°33'42.26" (32.561738°) LONGITUDE = -104°09'07.52" (-104.152899°) STATE PLANE NAD 83 (N.M. EAST) N: 568181.16' E: 597019.90' STATE PLANE NAD 27 (N.M. EAST) N: 568119.84' E: 555839.59'	NAD 83 (LAST TAKE POINT) LATITUDE = 32°33'42.67" (32.561854°) LONGITUDE = -104°09'23.68" (-104.156577°) NAD 27 (LAST TAKE POINT) LATITUDE = 32°33'42.25" (32.561736°) LONGITUDE = -104°09'21.86" (-104.156071°) STATE PLANE NAD 83 (N.M. EAST) N: 568178.28' E: 595793.19' STATE PLANE NAD 27 (N.M. EAST) N: 568116.98' E: 554612.82'	NAD 83 (BOTTOM HOLE LOCATION) LATITUDE = 32°33'42.67" (32.561854°) LONGITUDE = -104°09'24.73" (-104.156869°) NAD 27 (BOTTOM HOLE LOCATION) LATITUDE = 32°33'42.25" (32.561736°) LONGITUDE = -104°09'22.91" (-104.156363°) STATE PLANE NAD 83 (N.M. EAST) N: 568178.05' E: 595703.21' STATE PLANE NAD 27 (N.M. EAST) N: 568116.73' E: 554522.84'



- = SURFACE HOLE LOCATION.
- ◆ = PENETRATION POINT/TAKE POINT
- = LEASE PENETRATION POINT
- = BOTTOM HOLE LOCATION.
- = LEASE BOUNDARY UNIT.
- ▲ = SECTION CORNER LOCATED.
- △ = SECTION CORNER RE-ESTABLISHED. (Not Set on Ground.)

Bondi 24 Fed Com 204H	TBD	10/14/24	TBD	TBD	TBD	TBD
-----------------------	-----	----------	-----	-----	-----	-----

VI. Separation Equipment: ☒ Attach a complete description of how Operator will size separation equipment to optimize gas capture.

VII. Operational Practices: ☒ Attach a complete description of the actions Operator will take to comply with the requirements of Subsection A through F of 19.15.27.8 NMAC.

VIII. Best Management Practices: ☒ Attach a complete description of Operator's best management practices to minimize venting during active and planned maintenance.

Section 2 – Enhanced Plan

EFFECTIVE APRIL 1, 2022

Beginning April 1, 2022, an operator that is not in compliance with its statewide natural gas capture requirement for the applicable reporting area must complete this section.

☐ Operator certifies that it is not required to complete this section because Operator is in compliance with its statewide natural gas capture requirement for the applicable reporting area.

IX. Anticipated Natural Gas Production:

Well	API	Anticipated Average Natural Gas Rate MCF/D	Anticipated Volume of Natural Gas for the First Year MCF
██████████		████	██████
██████████		████	██████
██████████		████	██████
██████████		████	██████
██████████		████	██████

X. Natural Gas Gathering System (NGGS):

Operator	System	ULSTR of Tie-in	Anticipated Gathering Start Date	Available Maximum Daily Capacity of System Segment Tie-in

XI. Map. ☒ Attach an accurate and legible map depicting the location of the well(s), the anticipated pipeline route(s) connecting the production operations to the existing or planned interconnect of the natural gas gathering system(s), and the maximum daily capacity of the segment or portion of the natural gas gathering system(s) to which the well(s) will be connected.

XII. Line Capacity. The natural gas gathering system ☐ will ☒ will not have capacity to gather 100% of the anticipated natural gas production volume from the well prior to the date of first production.

XIII. Line Pressure. Operator ☒ does ☐ does not anticipate that its existing well(s) connected to the same segment, or portion, of the natural gas gathering system(s) described above will continue to meet anticipated increases in line pressure caused by the new well(s).

☒ Attach Operator's plan to manage production in response to the increased line pressure.

XIV. Confidentiality: ☒ Operator asserts confidentiality pursuant to Section 71-2-8 NMSA 1978 for the information provided in Section 2 as provided in Paragraph (2) of Subsection D of 19.15.27.9 NMAC, and attaches a full description of the specific information for which confidentiality is asserted and the basis for such assertion.

Section 3 - Certifications

Effective May 25, 2021

Operator certifies that, after reasonable inquiry and based on the available information at the time of submittal:

☐ Operator will be able to connect the well(s) to a natural gas gathering system in the general area with sufficient capacity to transport one hundred percent of the anticipated volume of natural gas produced from the well(s) commencing on the date of first production, taking into account the current and anticipated volumes of produced natural gas from other wells connected to the pipeline gathering system; or

☒ Operator will not be able to connect to a natural gas gathering system in the general area with sufficient capacity to transport one hundred percent of the anticipated volume of natural gas produced from the well(s) commencing on the date of first production, taking into account the current and anticipated volumes of produced natural gas from other wells connected to the pipeline gathering system.

If Operator checks this box, Operator will select one of the following:

Well Shut-In. ☒ Operator will shut-in and not produce the well until it submits the certification required by Paragraph (4) of Subsection D of 19.15.27.9 NMAC; or

Venting and Flaring Plan. ☐ Operator has attached a venting and flaring plan that evaluates and selects one or more of the potential alternative beneficial uses for the natural gas until a natural gas gathering system is available, including:

- (a) power generation on lease;
- (b) power generation for grid;
- (c) compression on lease;
- (d) liquids removal on lease;
- (e) reinjection for underground storage;
- (f) reinjection for temporary storage;
- (g) reinjection for enhanced oil recovery;
- (h) fuel cell production; and
- (i) other alternative beneficial uses approved by the division.

Section 4 - Notices

1. If, at any time after Operator submits this Natural Gas Management Plan and before the well is spud:

(a) Operator becomes aware that the natural gas gathering system it planned to connect the well(s) to has become unavailable or will not have capacity to transport one hundred percent of the production from the well(s), no later than 20 days after becoming aware of such information, Operator shall submit for OCD's approval a new or revised venting and flaring plan containing the information specified in Paragraph (5) of Subsection D of 19.15.27.9 NMAC; or

(b) Operator becomes aware that it has, cumulatively for the year, become out of compliance with its baseline natural gas capture rate or natural gas capture requirement, no later than 20 days after becoming aware of such information, Operator shall submit for OCD's approval a new or revised Natural Gas Management Plan for each well it plans to spud during the next 90 days containing the information specified in Paragraph (2) of Subsection D of 19.15.27.9 NMAC, and shall file an update for each Natural Gas Management Plan until Operator is back in compliance with its baseline natural gas capture rate or natural gas capture requirement.

2. OCD may deny or conditionally approve an APD if Operator does not make a certification, fails to submit an adequate venting and flaring plan which includes alternative beneficial uses for the anticipated volume of natural gas produced, or if OCD determines that Operator will not have adequate natural gas takeaway capacity at the time a well will be spud.

I certify that, after reasonable inquiry, the statements in and attached to this Natural Gas Management Plan are true and correct to the best of my knowledge and acknowledge that a false statement may be subject to civil and criminal penalties under the Oil and Gas Act.

Signature: <i>Cassie Evans</i>
Printed Name: Cassie Evans
Title: Regulatory Specialist
E-mail Address: Cassie.Evans@permianres.com
Date: 9/24/24
Phone: 432-313-1732
OIL CONSERVATION DIVISION (Only applicable when submitted as a standalone form)
Approved By:
Title:
Approval Date:
Conditions of Approval:

Permian Resources Operating, LLC (372165)

Natural Gas Management Plan Descriptions**VI. Separation Equipment:**

Permian utilizes a production forecast from our Reservoir Engineering team to appropriately size each permanent, 3-phase separator and heater treater utilized for production operations. Our goal is to maintain 5 minutes of retention time in the test vessel and 20 minutes in the heater treater at peak production rates. The gas produced is routed from the separator to the gas sales line.

VII. Operational Practices:*Drilling*

During Permian's drilling operations it is uncommon for venting or flaring to occur. If flaring is needed due to safety concerns, gas will be routed to a flare and volumes will be estimated.

Flowback

During completion/recompletion flowback operations, after separation flowback begins and as soon as it is technically feasible, Permian routes gas through a permanent separator and the controlled facility where the gas is either sold or flared through a high-pressure flare if needed.

Production

Per 19.15.27.8.D, Permian's facilities are designed to minimize waste. Our produced gas will only be vented or flared in an emergency or malfunction situation, except as allowed for normal operations noted in 19.15.27.8.D(2) & (4). All gas that is flared is metered. All gas that may be vented will be estimated.

Performance Standards

Permian utilizes a production forecast from our Reservoir Engineering team to appropriately size each permanent, 3-phase separator and heater treater utilized for production operations.

All of Permian's permanent storage tanks associated with production operations which are routed to a flare or control device are equipped with an automatic gauging system.

All of Permian's flare stacks, both currently installed and for future installation, are:

- 1) Appropriately sized and designed to ensure proper combustion efficiency.
- 2) Equipped with an automatic ignitor or continuous pilot.
- 3) Anchored and located at least 100 feet from the well and storage tanks.

Permian's field operations and HSE teams have implemented an AVO inspection schedule that adheres to the requirements of 19.15.27.8.E(5).

All of our operations and facilities are designed to minimize waste. We routinely employ the following methods and practices:

- Closed-loop systems
- Enclosed and properly sized tanks

Permian Resources Operating, LLC (372165)

- Vapor recovery units to maximize recovery of low-pressure gas streams and potential unauthorized emissions
- Low-emitting or electric engines whenever practical
- Combustors and flare stacks in the event of a malfunction or emergency
- Routine facility inspections to identify leaking components, functioning control devices, such as flares and combustors, and repair / replacement of malfunctioning components where applicable

Measurement or estimation

Permian measures or estimates the volumes of natural gas vented, flared and/or beneficially used for all of our drilling, completing and producing wells. We utilize accepted industry standards and methodology which can be independently verified. Annual GOR testing is completed on our wells and will be submitted as required by the OCD. None of our equipment is designed to allow diversion around metering elements except during inspection, maintenance and repair operations.

VIII. Best Management Practices:

Permian utilizes the following BMPs to minimize venting during active and planned maintenance activities:

- Use a closed-loop process wherever possible during planned maintenance activities, such as blowdowns, liquid removal, and work over operations.
- Employ low-emitting or electric engines for equipment, such as compressors
- Adhere to a strict preventative maintenance program which includes routine facility inspections, identification of component malfunctions, and repairing or replacing components such as hatches, seals, valves, etc. where applicable
- Utilize vapor recovery units (VRU's) to maximize recovery of volumes of low-pressure gas streams and potential unauthorized emissions
- Route low pressure gas and emissions streams to a combustion device to prevent venting where necessary



U.S. Department of the Interior
BUREAU OF LAND MANAGEMENT

Drilling Plan Data Report

09/20/2024

APD ID: 10400097273

Submission Date: 02/23/2024

Highlighted data
reflects the most
recent changes

Operator Name: COLGATE OPERATING, LLC

Well Name: BONDI 24 FED COM

Well Number: 132H

Well Type: OIL WELL

Well Work Type: Drill

[Show Final Text](#)

Section 1 - Geologic Formations

Formation ID	Formation Name	Elevation	True Vertical	Measured Depth	Lithologies	Mineral Resources	Producing Formatio
14173256	QUATERNARY	3247	0	0	ALLUVIUM	USEABLE WATER	N
14173257	RUSTLER	3122	125	125	ANHYDRITE, SANDSTONE	USEABLE WATER	N
14173258	TOP SALT	2920	327	327	SALT	NONE	N
14173259	TANSILL	2406	841	841	SANDSTONE	NONE	N
14173260	YATES	2307	940	940	ANHYDRITE, SHALE	NATURAL GAS, OIL, USEABLE WATER	N
14173261	SEVEN RIVERS	2009	1238	1238	LIMESTONE	NATURAL GAS, OIL, USEABLE WATER	N
14173262	CAPITAN REEF	1919	1328	1328	LIMESTONE	USEABLE WATER	N
14173263	DELAWARE SAND	69	3178	3178	SANDSTONE	NATURAL GAS, OIL, USEABLE WATER	N
14173264	BRUSHY CANYON	-712	3959	3959	SANDSTONE	NATURAL GAS, OIL, USEABLE WATER	N
14173265	BONE SPRING	-2194	5441	5441	LIMESTONE, SANDSTONE, SHALE	NATURAL GAS, OIL, USEABLE WATER	N
14173267	BONE SPRING 3RD	-5481	8728	8728	LIMESTONE, SANDSTONE, SHALE	NATURAL GAS, OIL, USEABLE WATER	Y

Section 2 - Blowout Prevention

Pressure Rating (PSI): 5M

Rating Depth: 8950

Equipment: BOPE will meet all requirements for above listed system per 43 CFR 3172. BOPE with working pressure ratings in excess of anticipated maximum surface pressure will be utilized for well control from drill out of surface casing to TMD. The system may be upgraded to a higher pressure but still tested to the working pressure listed in the table above. If the system is upgraded all of the components installed will be functional, tested, and will meet all requirements per 43 CFR 3172. The wellhead will be a multibowl speed head allowing for hangoff of intermediate casing of the surface x intermediate annulus without breaking the connection between the BOP & wellhead. A variance is requested to utilize a flexible choke line (flexhose) from the BOP to choke manifold.

Requesting Variance? YES

Operator Name: COLGATE OPERATING, LLC

Well Name: BONDI 24 FED COM

Well Number: 132H

Variance request: Multibowl Wellhead, Flexhose, Breaktesting, Offline Cementing Variances. Attachments in Section 8.

Testing Procedure: Operator requests to ONLY test broken pressure seals per API Standard 53 and the attachments in Section 8. The BOP test shall be performed before drilling out of the surface casing shoe and will occur at a minimum: a. when initially installed, b. whenever any seal subject to test pressure is broken, c. following related repairs, d. at 21-day intervals. Testing of the ram type preventer(s) and annual type preventer(s) shall be tested per 43 CFR 3172. The BOPE configuration, choke manifold layout, and accumulator system will be in compliance with 43 CFR 3172. Bleed lines will discharge 100' from wellhead in non-H2S scenarios and 150' from wellhead in H2S scenarios.

Choke Diagram Attachment:

Bondi_24_Fed_5MCM_20240622074748.pdf

BOP Diagram Attachment:

Bondi_24_Fed_5MBOP_20240622074751.pdf

Section 3 - Casing

Casing ID	String Type	Hole Size	Csg Size	Condition	Standard	Tapered String	Top Set MD	Bottom Set MD	Top Set TVD	Bottom Set TVD	Top Set MSL	Bottom Set MSL	Calculated casing length MD	Grade	Weight	Joint Type	Collapse SF	Burst SF	Joint SF Type	Joint SF	Body SF Type	Body SF
1	SURFACE	17.5	13.375	NEW	API	N	0	150	0	150	3247	3097	150	J-55	54	BUTT	15.25	7.53	DRY	8.4	DRY	7.89
2	INTERMEDIATE	12.25	10.75	NEW	API	N	0	866	0	866	3247	2381	866	J-55	45.5	BUTT	12.02	4.61	DRY	7.63	DRY	7.46
3	INTERMEDIATE	9.875	8.625	NEW	NON API	N	0	3128	0	3128	3247	119	3128	P-110	32	OTHER - MO-FXL	5.53	2.48	DRY	3.94	DRY	5.72
4	PRODUCTION	7.875	5.5	NEW	NON API	N	0	19425	0	8950	3247	-5703	19425	P-110	20	OTHER - GeoConn	2.39	2.49	DRY	2.3	DRY	2.3

Casing Attachments

Operator Name: COLGATE OPERATING, LLC**Well Name:** BONDI 24 FED COM**Well Number:** 132H**Casing Attachments**

Casing ID: 1 **String** SURFACE**Inspection Document:****Spec Document:****Tapered String Spec:****Casing Design Assumptions and Worksheet(s):**Bondi_24_Fed_132H_Csg_20240622074826.pdf

Casing ID: 2 **String** INTERMEDIATE**Inspection Document:****Spec Document:****Tapered String Spec:****Casing Design Assumptions and Worksheet(s):**Bondi_24_Fed_132H_Csg_20240622074808.pdf

Casing ID: 3 **String** INTERMEDIATE**Inspection Document:****Spec Document:**

Bondi_24_Fed_MOFXL_Csg_Spec_20240222132027.pdf

Tapered String Spec:**Casing Design Assumptions and Worksheet(s):**Bondi_24_Fed_132H_Csg_20240622074818.pdf

Operator Name: COLGATE OPERATING, LLC

Well Name: BONDI 24 FED COM

Well Number: 132H

Casing Attachments

Casing ID: 4 String PRODUCTION

Inspection Document:

Spec Document:

Bondi_24_Fed_GeoConn_Csg_Spec_20240222070213.pdf

Tapered String Spec:

Casing Design Assumptions and Worksheet(s):

Bondi_24_Fed_132H_Csg_20240622074834.pdf

Section 4 - Cement

String Type	Lead/Tail	Stage Tool Depth	Top MD	Bottom MD	Quantity(sx)	Yield	Density	Cu Ft	Excess%	Cement type	Additives
SURFACE	Lead		0	150	120	1.34	14.8	160	50	Class C	Accelerator

INTERMEDIATE	Lead		0	690	110	1.88	12.9	190	50	Class C	EconoCem-HLC + 5% Salt + 5% Kol-Seal
INTERMEDIATE	Tail		690	866	40	1.34	14.8	50	50	Class C	Retarder
INTERMEDIATE	Lead		0	2500	230	1.88	12.9	430	50	Class C	EconoCem-HLC + 5% Salt + 5% Kol-Seal
INTERMEDIATE	Tail		2500	3128	80	1.33	14.8	100	25	Class C	Salt
PRODUCTION	Lead		2628	8567	590	2.41	11.5	1410	40	Class H	POZ, Extender, Fluid Loss, Dispersant, Retarder
PRODUCTION	Tail		8567	19425	1370	1.73	12.5	2360	25	Class H	POZ, Extender, Fluid Loss, Dispersant, Retarder

Operator Name: COLGATE OPERATING, LLC

Well Name: BONDI 24 FED COM

Well Number: 132H

Section 5 - Circulating Medium

Mud System Type: Closed

Will an air or gas system be Used? NO

Description of the equipment for the circulating system in accordance with Onshore Order #2:

Diagram of the equipment for the circulating system in accordance with Onshore Order #2:

Describe what will be on location to control well or mitigate other conditions: Sufficient quantities of mud materials will be on the well site at all times for the purpose of assuring well control and maintaining wellbore integrity. Surface interval will employ fresh water mud. The intermediate hole will utilize a saturated brine fluid to inhibit salt washout. The production hole will employ brine based and oil base fluid to inhibit formation reactivity and of the appropriate density to maintain well control.

Describe the mud monitoring system utilized: Centrifuge separation system. Open tank monitoring with EDR will be used for drilling fluids and return volumes. Open tank monitoring will be used for cement and cuttings return volumes. Mud properties will be monitored at least every 24 hours using industry accepted mud check practices.

Circulating Medium Table

Top Depth	Bottom Depth	Mud Type	Min Weight (lbs/gal)	Max Weight (lbs/gal)	Density (lbs/cu ft)	Gel Strength (lbs/100 sqft)	PH	Viscosity (CP)	Salinity (ppm)	Filtration (cc)	Additional Characteristics
0	150	SPUD MUD	8.6	9.5							
150	866	SALT SATURATED	10	10							
866	3128	OTHER : Fresh Water	8.6	9.5							
3128	1942 5	OTHER : Brine, Oil Based Mud	9	10							

Operator Name: COLGATE OPERATING, LLC**Well Name:** BONDI 24 FED COM**Well Number:** 132H**Section 6 - Test, Logging, Coring****List of production tests including testing procedures, equipment and safety measures:**

A directional survey is planned for this well.

List of open and cased hole logs run in the well:

DIRECTIONAL SURVEY,

Coring operation description for the well:

No coring operations are planned for this well.

Section 7 - Pressure**Anticipated Bottom Hole Pressure:** 4660**Anticipated Surface Pressure:** 2690**Anticipated Bottom Hole Temperature(F):** 146**Anticipated abnormal pressures, temperatures, or potential geologic hazards?** NO**Describe:****Contingency Plans geohazards description:****Contingency Plans geohazards****Hydrogen Sulfide drilling operations plan required?** YES**Hydrogen sulfide drilling operations**

Bondi_24_Fed_H2S_Plan_NENE_20240222055150.pdf

Section 8 - Other Information**Proposed horizontal/directional/multi-lateral plan submission:**

Bondi_24_Fed_132H_DD_20240222132302.pdf

Other proposed operations facets description:**Other proposed operations facets attachment:****Other Variance attachment:**

Bondi_24_Fed_Batch_20240222055329.pdf

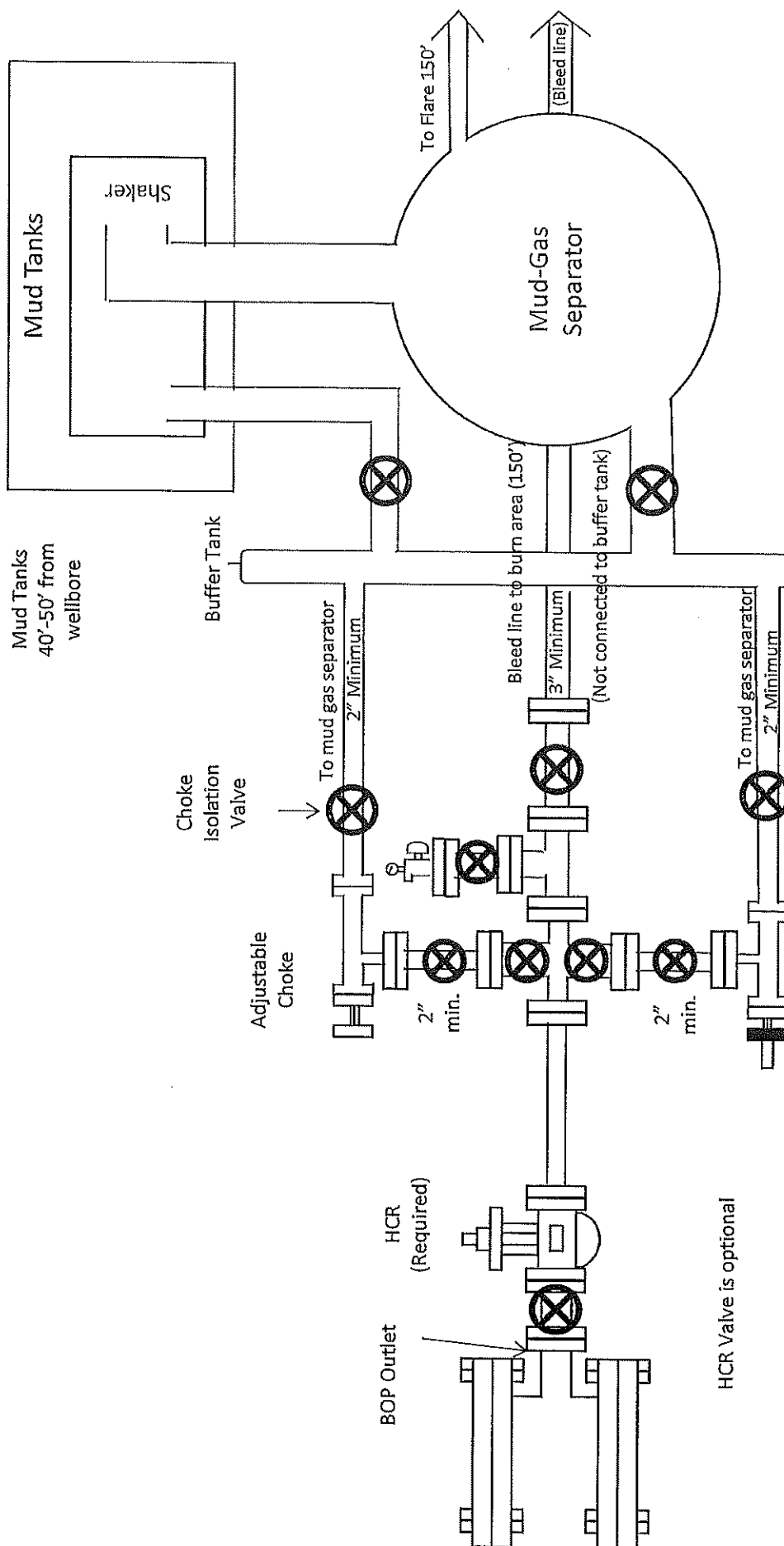
Bondi_24_Fed_Break_20240222055417.pdf

Bondi_24_Fed_MBS_20240222055328.pdf

Bondi_24_Fed_OLCV_20240222055329.pdf

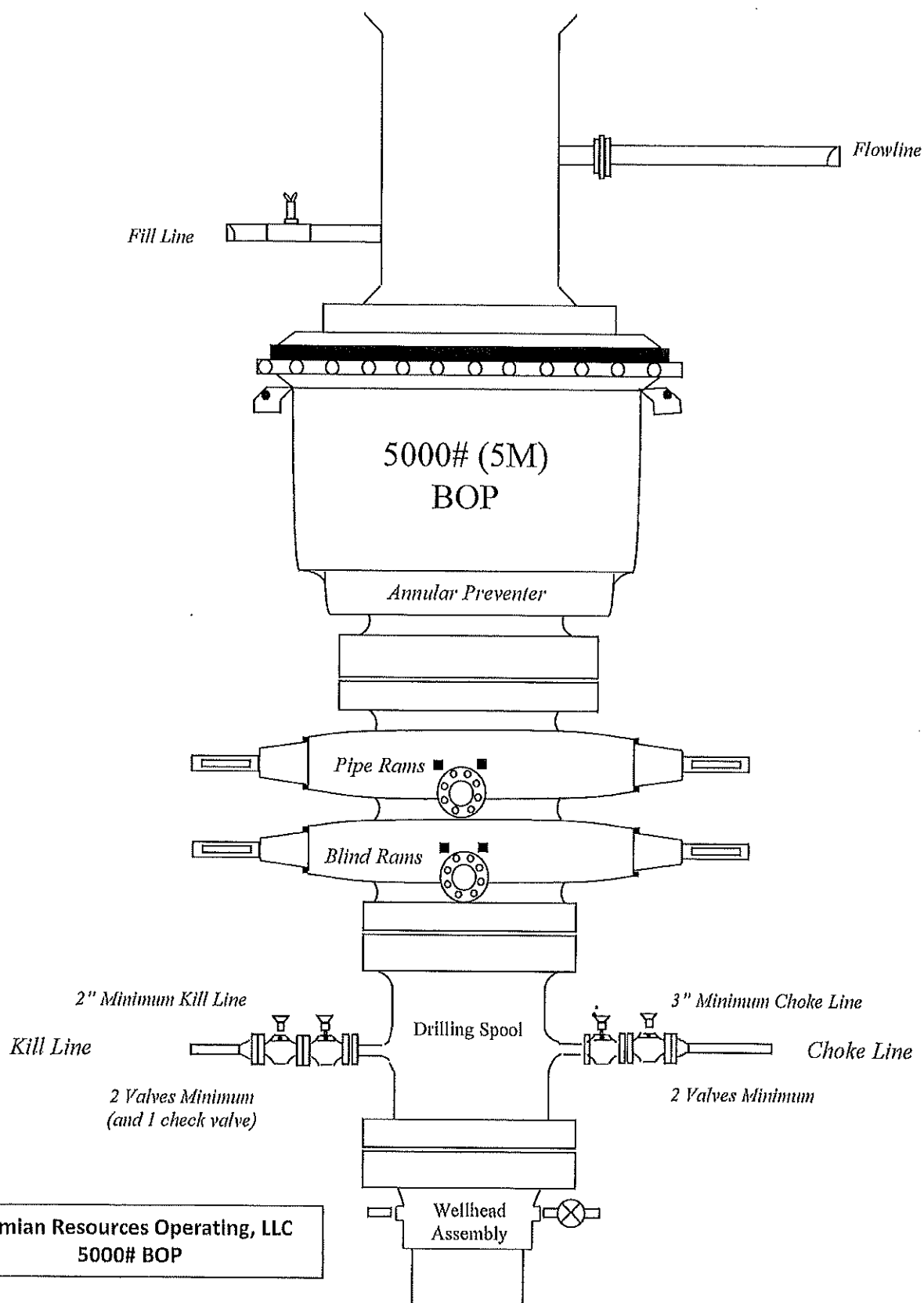
Bondi_24_Fed_FH_20240626064055.pdf

Bleed lines will discharge 100' from WH in non-H2S scenarios and 150' from WH in H2S scenarios.



Drilling Operations Choke Manifold 5M Service

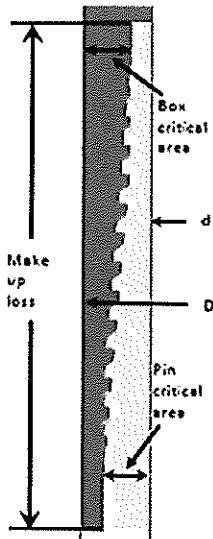
5M Choke Manifold Diagram
Permian Resources Operating, LLC



Bleed lines will discharge 100' from WH in non-H2S scenarios
and 150' from WH in H2S scenarios.

Metal One Corp. Metal One	MO-FXL *1 Pipe Body: BMP P110HSCY MinYS125ksi Min95%WT Connection Data Sheet	CDS# Date	MO-FXL 8-5/8 32.0 P110HSCY MinYS125ksi Min95%WT 8-Sep-21
---	---	------------------	--

MO-FXL



The diagram illustrates the geometry of a pipe connection. It shows a longitudinal section of a pipe with a threaded joint. Key features labeled include: 'Box critical area' at the top of the box thread, 'Pin critical area' at the bottom of the pin thread, 'Drift Dia.' indicated by a horizontal arrow, and 'Make up loss' indicated by a vertical arrow showing the gap between the pipe ends.

Geometry	Imperial		S.I.	
Pipe Body				
Grade *1	P110HSCY		P110HSCY	
MinYS *1	125	ksi	125	ksi
Pipe OD (D)	8 5/8	in	219.08	mm
Weight	32.00	lb/ft	47.68	kg/m
Actual weight	31.10		46.34	kg/m
Wall Thickness (t)	0.352	in	8.94	mm
Pipe ID (d)	7.921	in	201.19	mm
Pipe body cross section	9.149	in ²	5,902	mm ²
Drift Dia.	7.796	in	198.02	mm
	-	-	-	-
Connection				
Box OD (W)	8.625	in	219.08	mm
PIN ID	7.921	in	201.19	mm
Make up Loss	3.847	in	97.71	mm
Box Critical Area	5.853	in ²	3686	mm ²
Joint load efficiency	69	%	69	%
Thread Taper	1 / 10 (1.2" per ft)			
Number of Threads	5 TPI			
Performance				
Performance Properties for Pipe Body				
S.M.Y.S. *1	1,144	klps	5,087	kN
M.I.Y.P. *1	9,690	psi	66.83	MPa
Collapse Strength *1	4,300	psi	29.66	MPa
Note S.M.Y.S.= Specified Minimum YIELD Strength of Pipe body M.I.Y.P. = Minimum Internal Yield Pressure of Pipe body *1: BMP P110HSCY: MinYS125ksi, Min95%WT, Collapse Strength 4,300psi				
Performance Properties for Connection				
Tensile Yield load	789 klps (69% of S.M.Y.S.)			
Min. Compression Yield	789 klps (69% of S.M.Y.S.)			
Internal Pressure	6,780 psi (70% of M.I.Y.P.)			
External Pressure	100% of Collapse Strength			
Max. DLS (deg. /100ft)	29			
Recommended Torque				
Min.	13,600	ft-lb	18,400	N-m
Opti.	14,900	ft-lb	20,200	N-m
Max.	16,200	ft-lb	21,900	N-m
Operational Max.	28,400	ft-lb	38,500	N-m
Note : Operational Max. torque can be applied for high torque application				

Metal One Corp. Metal One	GEOCONN-SC Pipe Body: SeAH P110RY (SMYS 110ksi) & 95%RBW *1 Coupling: P110CY (SMYS 110ksi) Connection Data Sheet	Page Date Rev.	MA1 GC 5.5 20 SeAH PRY 95%RW SC-CplgOD 6.050 P110CY 29-Sep-21 0
---	---	----------------------	--

Geometry	Imperial		S.I.	
Pipe Body				
Grade *1	SeAH P110RY	-	SeAH P110RY	-
SMYS	110	ksi	110	ksi
Pipe OD (D)	6.500	in	139.70	mm
Weight	20.00	lb/ft	29.80	kg/m
Wall Thickness (t)	0.361	in	9.17	mm
Pipe ID (d)	4.778	in	121.36	mm
Drift Dia.	4.653	in	118.19	mm
Connection				
Coupling SMYS	110	ksi	110	ksi
Coupling OD (Wsc1)	6.050	in	153.67	mm
Coupling Length (NL)	8.350	in	212.09	mm
Make up Loss	4.125	in	104.78	mm
Pipe Critical Area	5.83	in ²	3.760	mm ²
Box Critical Area	6.00	in ²	3.874	mm ²
Thread Taper	1 / 16 (3/4" per ft)			
Number of Threads	5 TPI			

Performance	Imperial		S.I.	
Performance Properties for Pipe Body				
S.M.Y.S.	641	kips	2,852	kN
M.I.Y.P. *1	13,720	psi	94.62	MPa
Collapse Strength	11,100	psi	76.55	MPa
Note: S.M.Y.S. = Specified Minimum YIELD Strength of Pipe body M.I.Y.P. = Minimum Internal Yield Pressure of Pipe body *1 Pipe: SeAH P110RY (SMYS 110ksi), Min Wall Thickness of Pipe Body, 95% of Nom wall				
Performance Properties for Connection				
Min. Connection Joint Strength	100% of S.M.Y.S.			
Min. Compression Yield	100% of S.M.Y.S.			
Internal Pressure	100% of M.I.Y.P.			
External Pressure	100% of Collapse Strength			
Max. DLS (deg. /100ft)	>90			
Recommended Torque				
Min.	14,600	ft-lb	19,700	N-m
Opt.	16,200	ft-lb	21,900	N-m
Max.	17,800	ft-lb	24,100	N-m
Operational Max.	19,500	ft-lb	26,400	N-m
Note: Operational Max. torque can be applied for high torque application.				

Legal Notice

The use of this information is at the reader/user's risk and no warranty is implied or expressed by Metal One Corporation or its parents, subsidiaries or affiliates (herein collectively referred to as "Metal One") with respect to the use of information contained herein. The information provided on this Connection Data Sheet is for informational purposes only, and was prepared by reference to engineering information that is specific to the subject products, without regard to safety-related factors, all of which are the sole responsibility of the operators and users of the subject connections. Metal One assumes no responsibility for any errors with respect to this information.

Statements regarding the suitability of products for certain types of applications are based on Metal One's knowledge of typical requirements that are often placed on Metal One products in standard well configurations. Such statements are not limiting statements about the suitability of products for a particular application. It is the customer's responsibility to validate that a particular product with the properties described in the product specification is suitable for use in a particular application.

The products described in this Connection Data Sheet are not recommended for use in deep water offshore applications. For more information, please refer to

3. Casing

String	Hole Size	Casing Size	Top	Bottom	Top TVD	Bottom TVD	Length	Grade	Weight	Connection	Collapse SF	Burst SF	Joint SF Type	Joint SF	Body SF Type	Body SF
Surface	17.5	13.375	0	150	0	150	150	J55	54.5	BTC	15.25	7.53	Dry	8.40	Dry	7.89
Intermediate 1	12.25	10.75	0	866	0	866	866	J55	45.5	BTC	12.02	4.61	Dry	7.63	Dry	7.46
Intermediate 2	9.875	8.625	0	3128	0	3128	3128	P110 HS	32	MO-FXL	5.72	2.51	Dry	3.94	Dry	5.72
Production	7.875	5.5	0	9317	0	8950	9317	P110RY	20	GeoConn	2.39	2.49	Dry	2.30	Dry	2.30
Production	7.875	5.5	9317	19425	8950	8950	10108	P110RY	20	GeoConn	2.39	2.49	Dry	2.30	Dry	2.30
BLM Min Safety Factor											1.125	1		1.6		1.6

Non API casing spec sheets and casing design assumptions attached.

Colgate Operating Multi-Well Pad Batch Drilling Procedure

Surface Casing - PR intends to Batch set all surface casing to a depth approved in the APD. Surface Holes will be batch drilled by a rig. Appropriate notifications will be made prior to spudding the well, running and cementing casing and prior to skidding to the rig to the next well on pad.

1. Drill Surface hole to Approved Depth with Rig and perform wellbore cleanup cycles. Trip out and rack back drilling BHA.
2. Run and land planned surface casing see Illustration 1-1 Below to depth approved in APD.
3. Set packoff and test to 5k psi
4. Offline Cement
5. Install wellhead with pressure gauge and nightcap. Nightcap is shown on final wellhead Stack up Illustration #2-2.
6. Skid Rig to adjacent well to drill Surface hole.
7. Surface casing test will be performed by the rig in order to allow ample time for Cement to develop 500psi compressive strength. Casing test to 0.22 psi/ft or 1500 psi whichever is greater - not to exceed 70% casing burst.

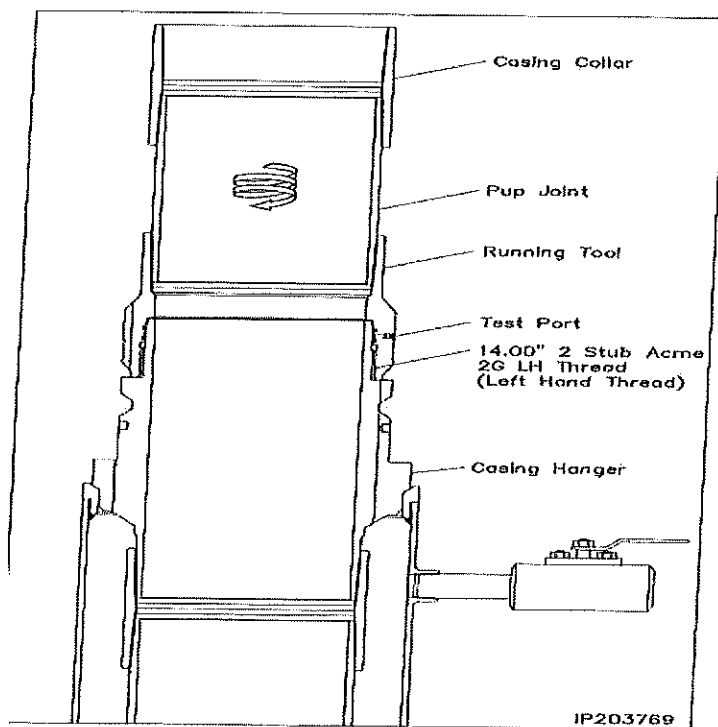
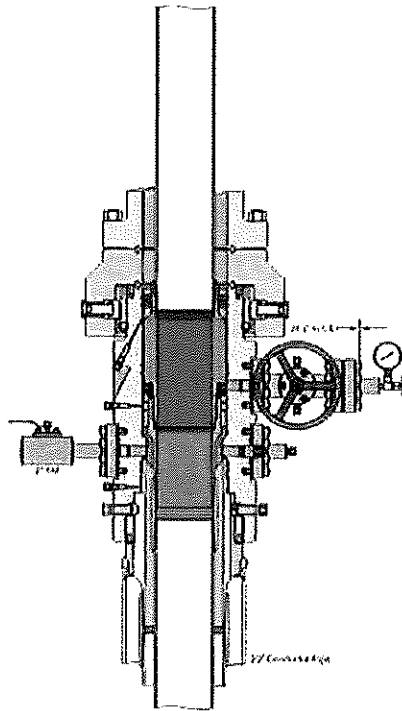


Illustration 1-1

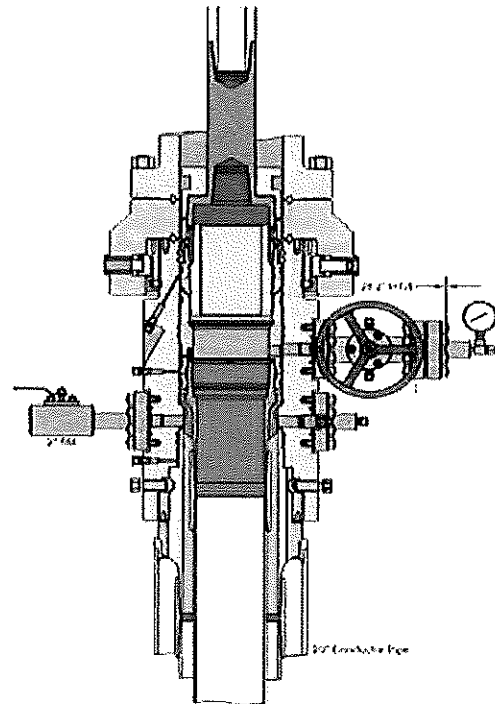
Production Casing – PR intends to Batch set all Production casings with Rig. Appropriate notifications will be made prior Testing BOPE, and prior to running/cementing all casing strings.

1. Drilling Rig will remove the nightcap and install and test BOPE.
2. Install wear bushing then drill Intermediate shoe-track plus 20' and conduct FIT to minimum MW equivalent to control the formation pressure to TD of well.
3. Drill Vertical hole to KOP – Trip out for Curve BHA.
4. Drill Curve, landing in production interval – Trip for Lateral BHA.
5. Drill Lateral / Production hole to Permitted BHL, perform cleanup cycles and trip out to run Production Casing.
6. Remove wear bushing then run Production casing to TD landing casing mandrel in wellhead.
7. Cement Production string with floats holding.
8. Run in with wash tool and wash wellhead area – install pack-off and test void to 5,000psi for 15 minutes.
9. Install BPV in Production mandrel hanger – Nipple down BOPE and install nightcap.
10. Test nightcap void to 5,000 psi for 30 minutes per illustration 2-2
11. Skid rig to adjacent well on pad to drill production hole.

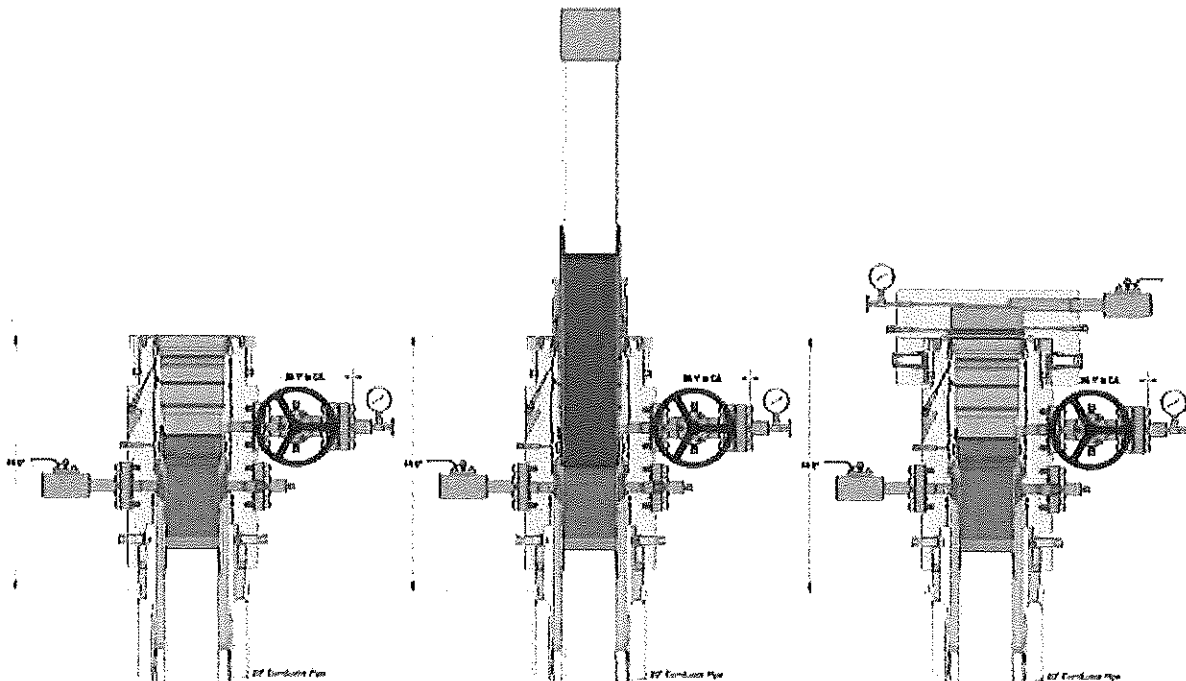
Intermediate



Run 7 5/8" Casing
Land Casing on 7 5/8" Mandrel Hanger
Cement 7 5/8" Casing
Retrieve Running Tool



Run 9 5/8" Packoff
Test Upper and Lower Seals
Engage Lockring
Retrieve Running Tool



Colgate Operating BOP Break Testing Variance Procedure

Subject: Request for a Variance Allowing break Testing of the Blowout Preventer Equipment (BOPE). Colgate Operating requests a variance to ONLY test broken pressure seals on the BOPE and function test BOP when skidding a drilling rig between multiple wells on a pad.

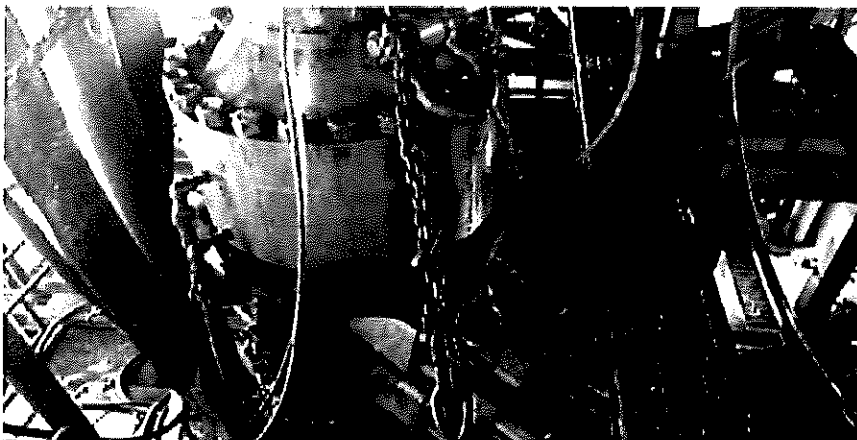
Background

Title 43 CFR 3172, Drilling Operations, Sections 6.b.9.iv states that the BOP test must be performed whenever any seal subject to test pressure is broken. The current interpretation of the Bureau of Land Management (BLM) requires a complete BOP test and not just a test of the affected component. 43 CFR 3172.13, Variances from minimum standards states, "An operator may request the authorized officer to approve a variance from any of the minimum standards prescribed in §§ 3172.6 through 3172.12. All such requests shall be submitted in writing to the appropriate authorized officer and provide information as to the circumstances which warrant approval of the variance(s) requested and the proposed alternative methods by which the related minimum standard(s) are to be satisfied. The authorized officer, after considering all relevant factors, if appropriate, may approve the requested variance(s) if it is determined that the proposed alternative(s) meet or exceed the objectives of the applicable minimum standard(s)". Colgate Operating feels the break testing the BOPE is such a situation. Therefore, as per 43 CFR 3172.13, Colgate Operating submits this request for the variance.

Supporting Documentation

The language used in 43 CFR 3172 became effective on December 19, 1988 and has remained the standard for regulating BLM onshore drilling operations for over 30 years. During this time, there have been significant changes in drilling technology. The BLM continues to use the variance request process to allow for the use of modern technology and acceptable engineering practices that have arisen since 43 CFR 3172 was originally released. The Colgate Operating drilling rig fleet has many modern upgrades that allow the intact BOP stack to be moved between well slots on a multi-well pad, as well as, wellhead designs that incorporate quick connects facilitating release of the BOP from the wellhead without breaking any BOP stack components apart. These technologies have been used extensively offshore, and other regulators, API, and many operators around the world have endorsed break testing as safe and reliable.

Figure 1: Winch System attached to BOP Stack



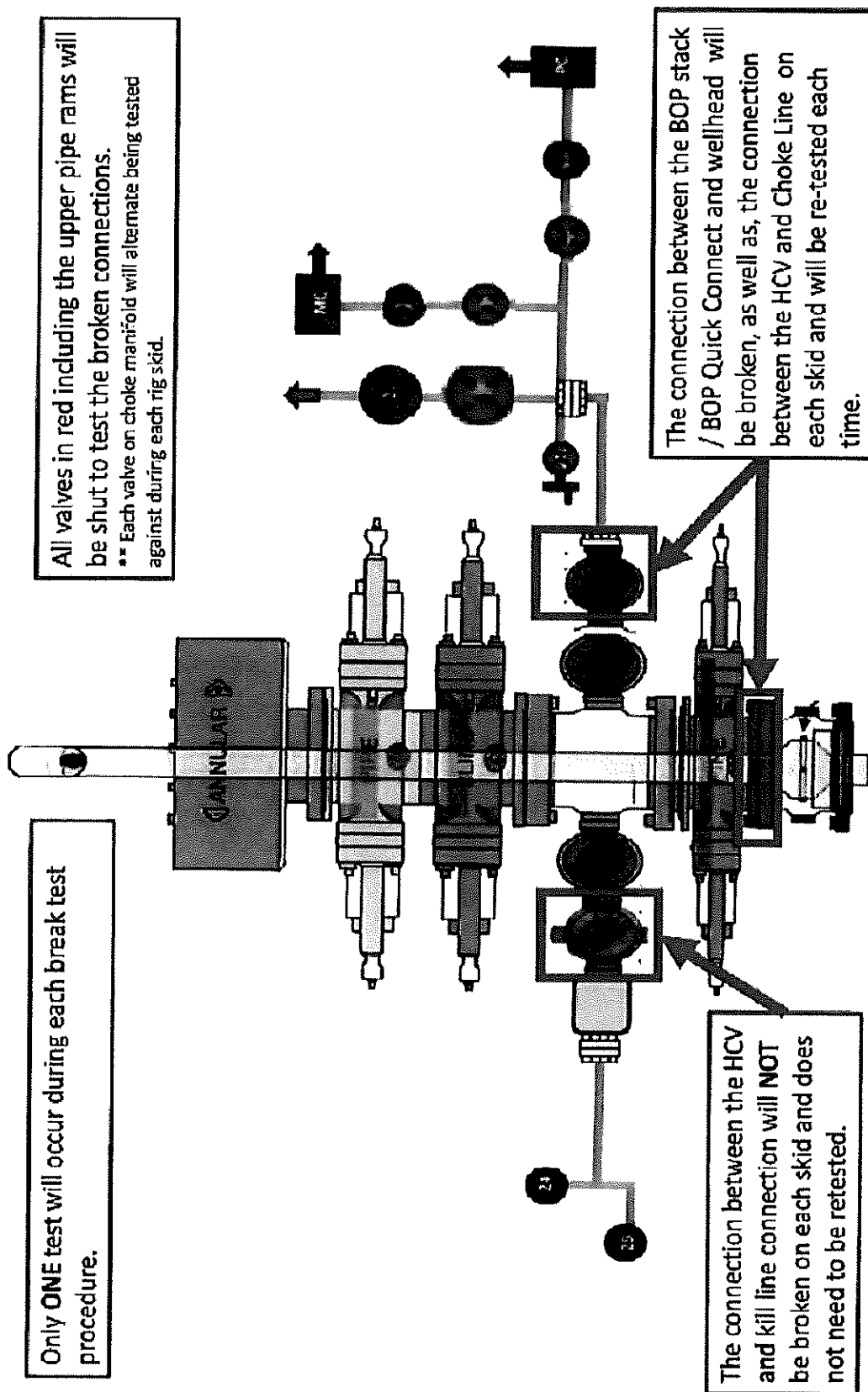
The Bureau of Safety and Environmental Enforcement (BSEE), Department of Interior, has also utilized the API standards, specification and best practices in the development of its offshore oil and gas regulations and incorporates them by reference within its regulations.

Break testing has been approved by the BLM in the past with other operators based on the detailed information provided in this document.

Colgate Operating feels break testing and our current procedures meet the intent of 43 CFR 3172 and often exceed it. There has been no evidence that break testing results in more components failing than seen on full BOP tests. Colgate Operating internal standards require complete BOPE tests more often than that of 43 CFR 3172 (every 21 days). In addition to function testing the annular, pipe rams and blind rams after each BOP nipple up, Colgate Operating performs a choke drill with the rig crew prior to drilling out every casing shoe. This is additional training for the rig crew that exceeds the requirements of 43 CFR 3172.

Procedures

- 1) Colgate Operating will use this document for our break testing plan for New Mexico Delaware Basin. The summary below will be referenced in the APD or Sundry Notice and receive approval prior to implementing this variance.
- 2) Colgate Operating will perform BOP break testing on multi-wells pads where multiple intermediate sections can be drilled and cased within the 21-day BOP test window.
 - a) A full BOP test will be conducted on the first well on the pad.
 - b) The first intermediate hole section drilled on the pad will be the deepest. All the remaining hole sections will be the same formation depth or shallower.
 - c) A full BOP test will be required if the intermediate hole section being drilled has a MASP over 5M.
 - d) A full BOP test will be required prior to drilling any production hole.
- 3) After performing a complete BOP test on the first well, the intermediate hole section will be drilled and cased, two breaks would be made on the BOP equipment.
 - a) Between the HCV valve and choke line connection
 - b) Between the BOP quick connect and the wellhead
- 4) The BOP is then lifted and removed from the wellhead by a hydraulic system.
- 5) After skidding to the next well, the BOP is moved to the wellhead by the same hydraulic system and installed.
- 6) The connections mentioned in 3a and 3b will then be reconnected.
- 7) Install test plug into the wellhead using test joint or drill pipe.
- 8) A shell test is performed against the upper pipe rams testing the two breaks.
- 9) The shell test will consist of a 250 psi low test and a high test to the value submitted in the APD or Sundry (e.g. 5,000 psi or 10,000psi).
- 10) Function tests will be performed on the following components: lower pipe rams, blind rams, and annular.
- 11) For a multi-well pad the same two breaks on the BOP would be made and on the next wells and steps 4 through 10 would be repeated.
- 12) A second break test would only be done if the intermediate hole section being drilled could not be completed within the 21 day BOP test window.





H3-12183

1/25/2023 2:59:32 PM

TEST REPORT**CUSTOMER**Company: HELMERICH & PAYNE
INTERNATIONAL DRILLING CO.

Production description: SN62429

Sales order #: 525826

Customer reference:

TEST OBJECT

Serial number: H3-012523-17

Lot number:

Description: SN62429

Hose ID: 3.0 CK03 16C 10K

Part number:

TEST INFORMATION

Test procedure: GTS-04-053

Test pressure: 15000.00 psi

Test pressure hold: 3600.00 sec

Work pressure: 10000.00 psi

Work pressure hold: 900.00 sec

Length difference: 0.00 %

Length difference: 0.00 Inch

Fitting 1: 3.0 x 3-1/16 10K

Part number:

Description:

Fitting 2: 3.0 x 3-1/16 10K

Part number:

Description:

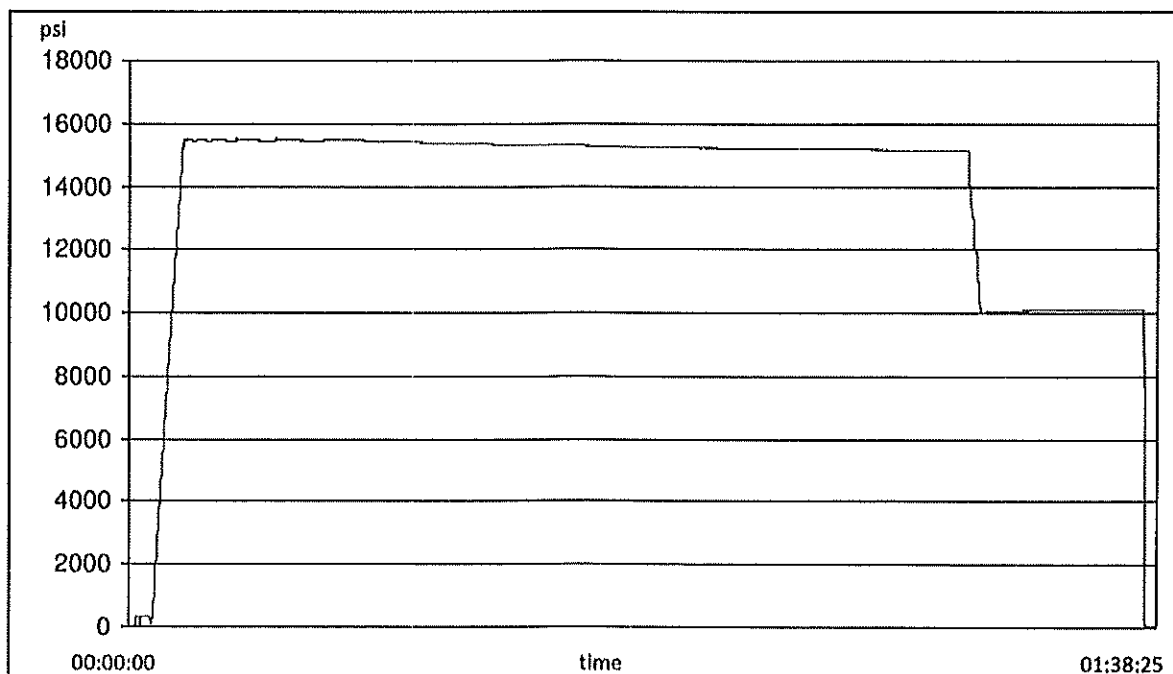
Visual check:

Pressure test result: PASS

Length measurement result:

Length: 16 feet

Test operator: Martin



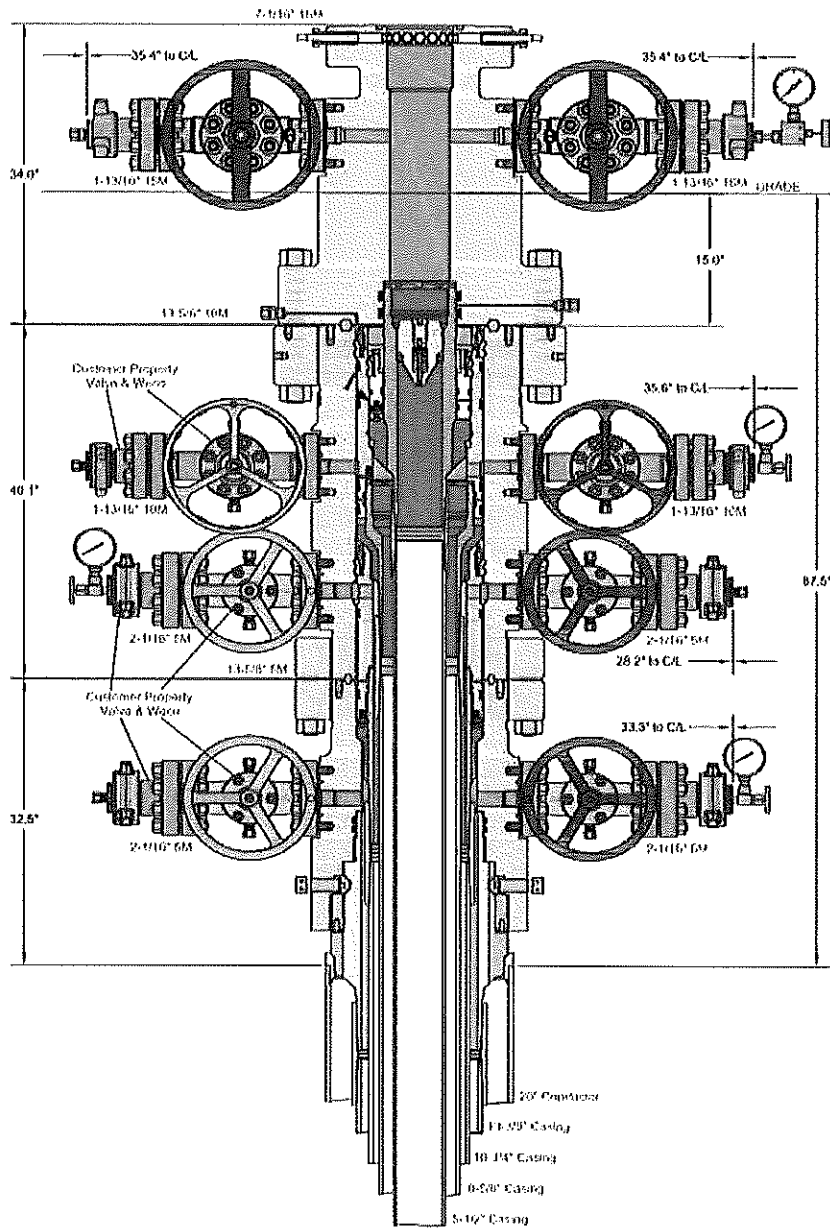


CONTITECH RUBBER Industrial Kft.	No: QC-DB-062 / 2022
	Page: 16 / 131

ContiTech

TEST CERTIFICATE according to EN 10204 3.1 and Supplier's Declaration of Conformity acc. to ISO/IEC 17050-1		CERT. N°: 81142	
CUSTOMER: ContiTech Oil & Marine Corp.		C.O. N°: 4501624407	
Supplier's name: Contitech Rubber Industrial Kft.		Supplier's address: Budapesti út 10. H-6728 Szeged	
CONTITECH ORDER N°: 1386035	HOSE TYPE: 3" ID Choke & Kill Hose		
HOSE SERIAL N°: 81142	NOMINAL / ACTUAL LENGTH: 7,92 m / 7,90 m		
W.P. 69,0 MPa 10000 psi	T.P. 103,5 MPa 15000 psi	Duration: 60 min.	
Pressure test with water at ambient temperature			
See attachment (1 page)			
COUPLINGS Type	Serial N°	Quality	Heat N°
3" coupling with 3 1/16" 10K API b.w. Flange end	4411	AISI 4130 AISI 4130	68655 043795
3" coupling with 3 1/16" 10K API Swivel Flange end Hub	4428	AISI 4130 AISI 4130 AISI 4130	68626 041743 54538
Not Designed For Well Testing		API Spec 16C 3rd Edition – FSL3	
Fire Rated		Temperature rate: "B"	
All metal parts are flawless			
WE CERTIFY THAT THE ABOVE HOSE HAS BEEN MANUFACTURED IN ACCORDANCE WITH THE TERMS OF THE ORDER INSPECTED AND PRESSURE TESTED AS ABOVE WITH SATISFACTORY RESULT.			
STATEMENT OF CONFORMITY: We hereby certify that the above items/equipment supplied by us are in conformity with the terms, conditions and specifications of the above Customer Order and that these items/equipment were fabricated inspected and tested in accordance with the referenced standards, other technical standards and specifications and meet the relevant acceptance criteria and design requirements. This declaration of conformity is issued under the sole responsibility of the manufacturer.			
COUNTRY OF ORIGIN HUNGARY/EU			
Date: 28. February 2022.	Inspector	Quality Control ContiTech Rubber Industrial Kft. Quality Control Dept. (1)	
		István Farkas	Lajos Bacsá

ContiTech Rubber Industrial Kft. | Budapesti út 10. H-6728 Szeged | H-6701 P.O.Box 152 Szeged, Hungary
 Phone: +36 20 292 2075 | e-mail: info@fluid.contitech.hu | Internet: www.contitech-rubber.hu; www.contitech-oil-gas.com
 The Court of Csongrád County as Registry Court | Registry Court No: Cg.06-09-002502 | EU VAT No: HU11087209
 Bank data Commerzbank Zrt., Budapest | 14220108-26830003



INFORMATION CONTAINED HEREIN IS THE PROPERTY OF CACTUS WELLHEAD, LLC. REPRODUCTION, DISSEMINATION, OR USE OF THIS INFORMATION IS PERMITTED ONLY AS PROVIDED BY CONTRACT OR AS EXPRESSLY AUTHORIZED BY CACTUS WELLHEAD, LLC.

ALL DIMENSIONS APPROXIMATE

CACTUS WELLHEAD LLC

Colgate Operating LLC
NEW MEXICO

20" x 13-3/8" x 10-3/4" x 8-5/8" x 5-1/2" MBU-4T-CFL-R-DBLO Sys.
With 13-5/8" 10M x 7-1/16" 15M CTH-DBLHPS Tubing Head
And 10-3/4" & 7-5/8" & 5-1/2" Fluted Mandrel Casing Hangers

DRAWN
APPRV

DLE

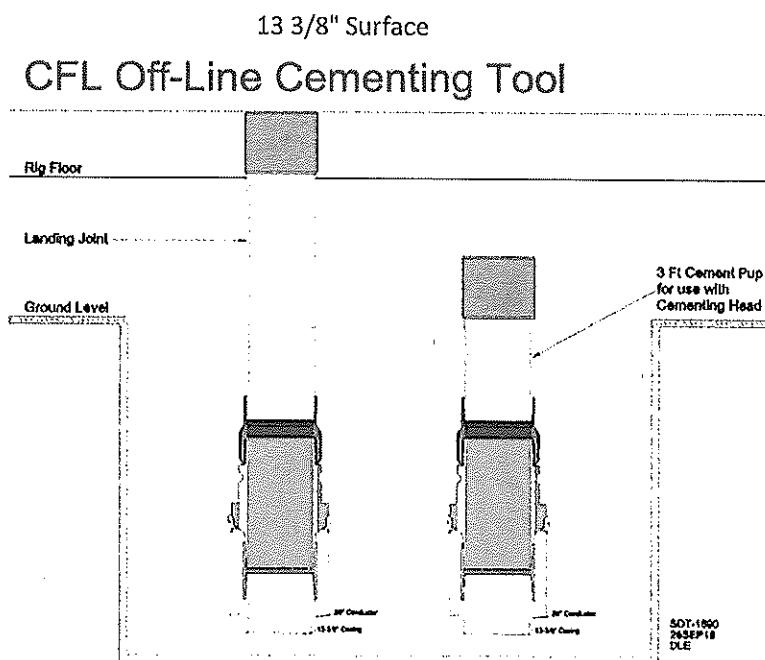
26OCT23

DRAWING NO.

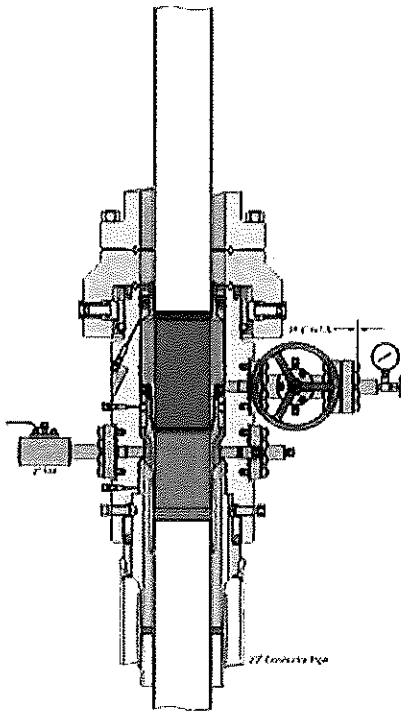
HBE0001038

Colgate Operating Offline Cementing Procedure Surface & Intermediate Casing

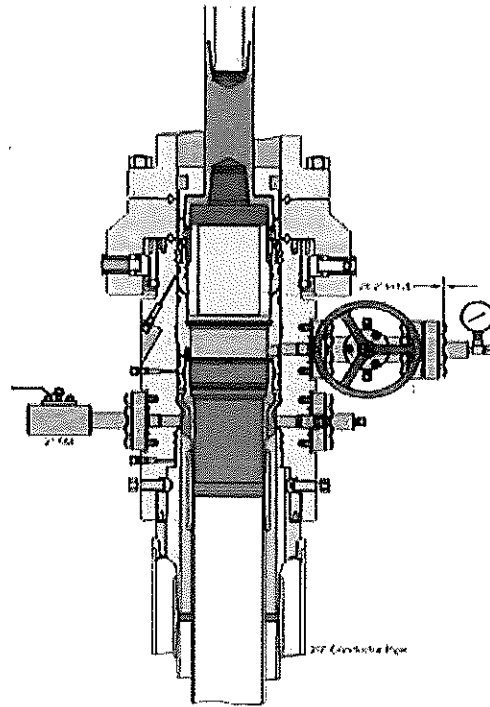
1. Drill hole to Total Depth with Rig and perform wellbore cleanup cycles.
2. Run and casing to Depth.
3. Land casing with mandrel.
4. Circulate 1.5 csg capacity.
5. Flow test – Confirm well is static and floats are holding.
6. Set Annular packoff and pressure test. Test to 5k.
7. Nipple down BOP and install cap flange.
8. Skid rig to next well on pad
9. Remove cap flange (confirm well is static before removal)
 - a) If well is not static use the casing outlet valves to kill well
 - b) Drillers method will be used in well control event
 - c) High pressure return line will be rigged up to lower casing valve and run to choke manifold to control annular pressure
 - d) Kill mud will be circulated once influx is circulated out of hole
 - e) Confirm well is static and remove cap flange to start offline cement operations
10. Install offline cement tool.
11. Rig up cementers.
12. Circulate bottoms up with cement truck
13. Commence planned cement job, take returns through the annulus wellhead valve
14. After plug is bumped confirm floats hold and well is static
15. Rig down cementers and equipment
16. Install night cap with pressure gauge to monitor.



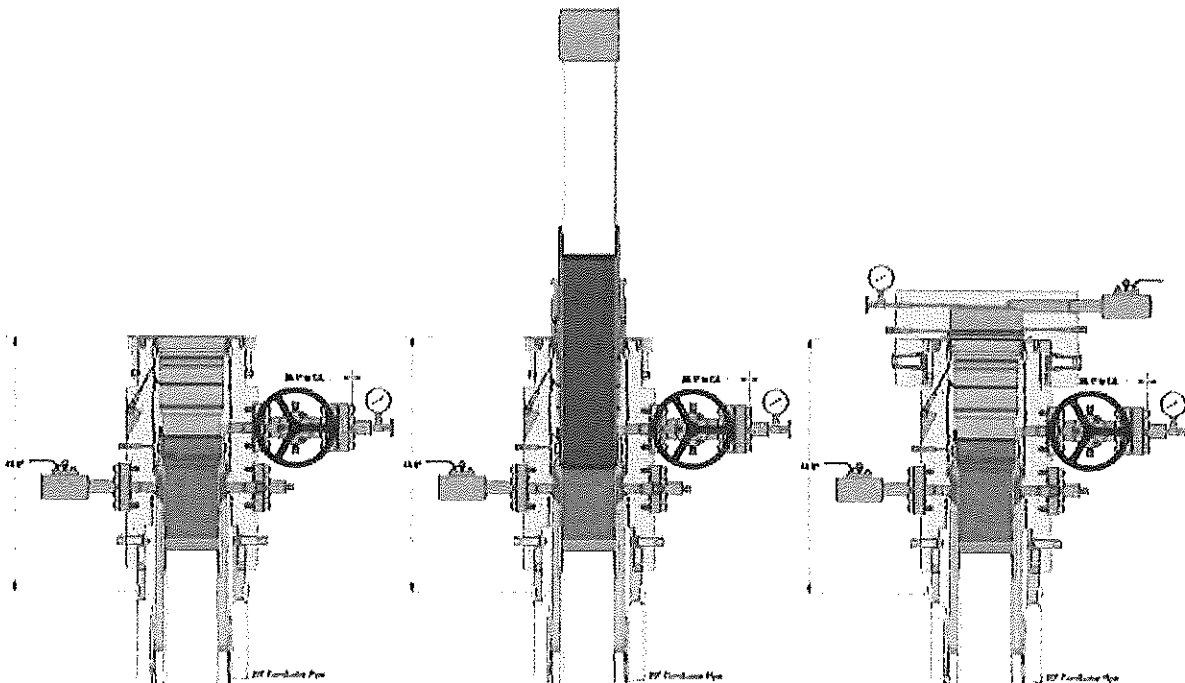
Intermediate



Run 7 5/8" Casing
Land Casing on 7 5/8" Mandrel Hanger
Cement 7 5/8" Casing
Retrieve Running Tool



Run 9 5/8" Packoff
Test Upper and Lower Seals
Engage Lockring
Retrieve Running Tool





GATES ENGINEERING & SERVICES NORTH AMERICA
7803 Prairie Oak Dr.
Houston, TX. 77086

PHONE: +1 (281) 602-4100
FAX: +1 (281) 602-4147
EMAIL: gesna.quality@gates.com
WEB: www.gates.com/oilandgas

CERTIFICATE OF CONFORMANCE

This is to verify that the items detailed below meet the requirements of the Customer's Purchase Order referenced herein, and are in conformance with applicable specifications, and that Records of Required Tests are on file and subject to examination. The following items were inspected and hydrostatically tested at **Gates Engineering & Services North America** facilities in Houston, TX, USA.

CUSTOMER: / HELMERICH & PAYNE INTERNATIONAL DRILLING CO.
CUSTOMER P.O.#: 740414061 (SN: 62429 - 88061537)
CUSTOMER P/N: SN: 62429 - 88061537

PART DESCRIPTION: INSPECT AND RETEST CUSTOMER HOSE 3IN X 16FT CHOKE & KILL ASSEMBLY C/W 3-1/16 FLANGES BX154 SS INLAID RING GROOVE EACH END

SALES ORDER #: 525826
QUANTITY: 1
SERIAL #: 62429 H3-012523-17

SIGNATURE:

F. Cisneros

TITLE:

QUALITY ASSURANCE

DATE:

1/26/2023



H3-12183

1/25/2023 2:59:32 PM

TEST REPORT

GAUGE TRACEABILITY

Description	Serial number	Calibration date	Calibration due date
S-25-A-W	110AQA1S	2022-03-09	2023-03-09
S-25-A-W	110CBWVV	2022-03-09	2023-03-09

Comment

ATTACHMENT OF QUALITY CONTROL
INSPECTION AND TEST CERTIFICATE
No: 81137, 81138, 81139,
81140, 81141, 81142

CONTITECH RUBBER
Industrial Kft.

No: QC-DB-062 / 2022

Page: 17 / 131

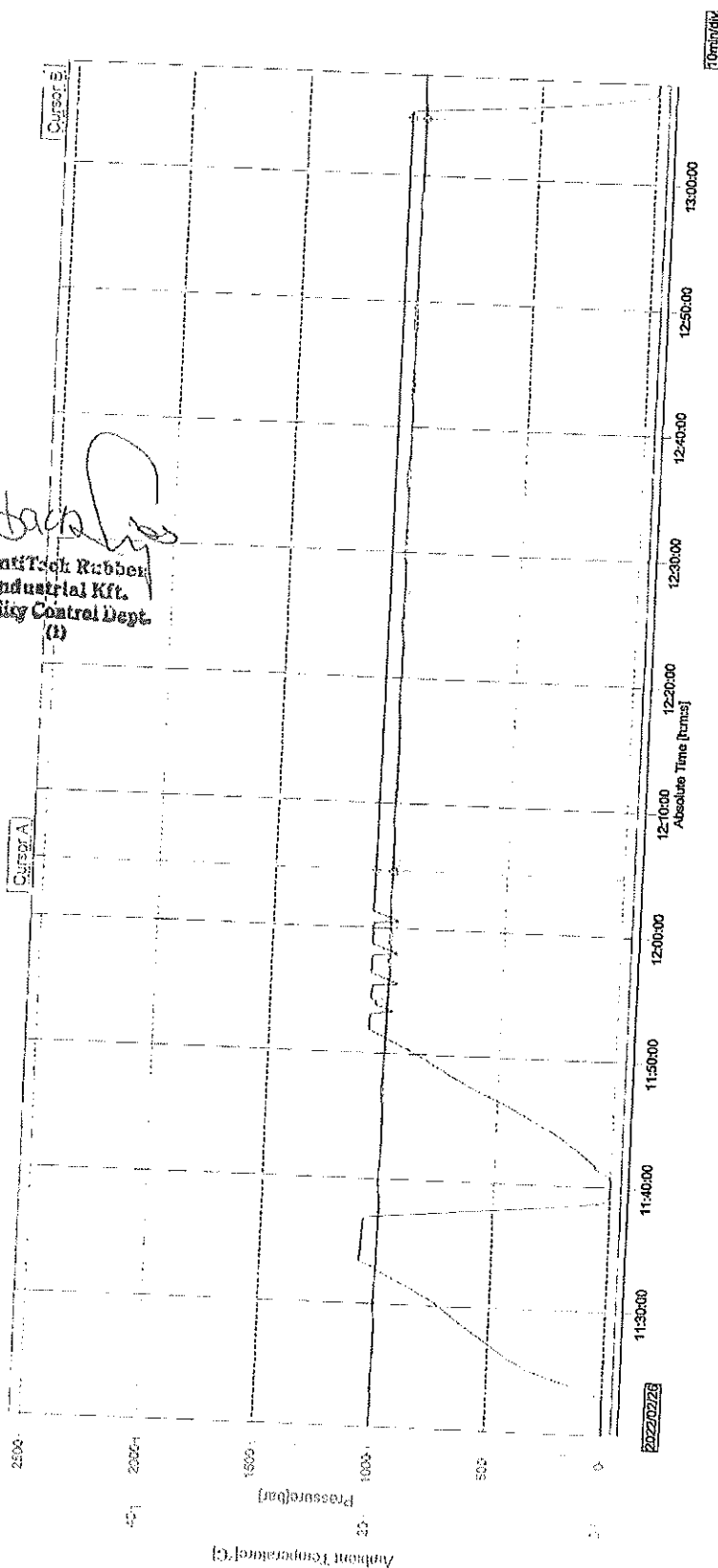
1/1

Sampling Int. : 5.000 sec
Start Time : 2022/02/26 11:20:10.000
Stop Time : 2022/02/26 13:08:00.000

File Name : 048171_81137-81142.GEV...048181_81137-81142.GEV
File Message : 81137,81138,81139,81140,81141,81142
Device Type : GX10
Serial No. : SSP606399
Data Count : 1295
Print Group : Press-Temp
Print Range : 2022/02/26 11:20:10.000 - 2022/02/26 13:08:00.000
Comment : 110BFGH! 81137,81138,81139,81140,81141,81142

Data No.	Cursor A	Cursor B	Difference
Absolute Time	2022/02/26 12:04:35.000	2022/02/26 12:53	720
Tag Comment	Value A	Value B	Value B-A
Pressure[bar]	1070.80	1057.48	-13.31
Ambient Temperature[°C]	19.90	19.88	-0.02

Contitech Rubber
Industrial Kft.
Quality Control Dept.
(1)



Bondi 24 FED COM 132H

APD - Geology COAs (Not in Potash or WIPP)

- For at least one well per pad (deepest well within initial development preferred) the record of the drilling rate (ROP) along with the Gamma Ray (GR) and Neutron (CNL) well logs run from TVD to surface in the vertical section of the hole shall be submitted to the BLM office as well as all other logs run on the full borehole 30 days from completion. Any other logs run on the wellbore, excluding cement remediation, should also be sent. Only digital copies of the logs in .TIF or .LAS formats are necessary; paper logs are no longer required. Logs shall be emailed to blm-cfo-geology@doimspp.onmicrosoft.com. Well completion report should have .pdf copies of any CBLs or Temp Logs run on the wellbore.
- Exceptions: In areas where there is extensive log coverage (in particular the salt zone adjacent to a pad), Operators are encouraged to contact BLM Geologists to discuss if additional GR and N logs are necessary on a pad. Operator may request a waiver of the GR and N log requirement due to good well control or other reasons to be approved by BLM Geologist prior to well completion. A waiver approved by BLM must be attached to completion well report to satisfy COAs.
- The top of the Rustler, top and bottom of the Salt, and the top of the Capitan Reef (if present) are to be recorded on the Completion Report.

Be aware that:

- H2S has been reported within one mile of the proposed project. Measurements up to 500 ppm were recorded from the Delaware Group.

Questions? Contact Thomas Evans, BLM Geologist at 575-234-5965 or tvevans@blm.gov

Approval Date: 09/19/2024

PECOS DISTRICT DRILLING CONDITIONS OF APPROVAL

OPERATOR'S NAME:	Colgate Operating, LLC
WELL NAME & NO.:	Bondi 24 Fed Com 132H
LOCATION:	Sec 24-20S-28E-NMP
COUNTY:	Eddy County, New Mexico ▼

COA

H ₂ S	<input type="radio"/> No		<input checked="" type="radio"/> Yes	
Potash / WIPP	<input checked="" type="radio"/> None	<input type="radio"/> Secretary	<input type="radio"/> R-111-Q	<input type="radio"/> Open Annulus <input type="radio"/> WIPP
Cave / Karst	<input type="radio"/> Low	<input type="radio"/> Medium	<input checked="" type="radio"/> High	<input type="radio"/> Critical
Wellhead	<input type="radio"/> Conventional	<input checked="" type="radio"/> Multibowl	<input type="radio"/> Both	<input type="radio"/> Diverter
Cementing	<input type="radio"/> Primary Squeeze	<input type="radio"/> Cont. Squeeze	<input type="radio"/> EchoMeter	<input type="radio"/> DV Tool
Special Req	<input checked="" type="checkbox"/> Capitan Reef	<input type="checkbox"/> Water Disposal	<input checked="" type="checkbox"/> COM	<input type="checkbox"/> Unit
Waste Prev.	<input type="radio"/> Self-Certification	<input type="radio"/> Waste Min. Plan	<input checked="" type="radio"/> APD Submitted prior to 06/10/2024	
Additional Language	<input checked="" type="checkbox"/> Flex Hose	<input type="checkbox"/> Casing Clearance	<input type="checkbox"/> Pilot Hole	<input checked="" type="checkbox"/> Break Testing
	<input checked="" type="checkbox"/> Four-String	<input checked="" type="checkbox"/> Offline Cementing	<input type="checkbox"/> Fluid-Filled	

A. HYDROGEN SULFIDE

A Hydrogen Sulfide (H₂S) Drilling Plan shall be activated 500 feet prior to drilling into the **Delaware Mountain Group** formations. As a result, the Hydrogen Sulfide area must meet all requirements from 43 CFR 3176, which includes equipment and personnel/public protection items. If Hydrogen Sulfide is encountered, please provide measured values and formations to the BLM.

B. CASING

1. The 13-3/8 inch surface casing shall be set at approximately **300** feet (a minimum of 70 feet (Eddy County) into the Rustler Anhydrite, above the salt, and below usable fresh water) and cemented to the surface. *Set depth adjusted per BLM geologist.*
 - a. If cement does not circulate to the surface, the appropriate BLM office shall be notified and a temperature survey utilizing an electronic type temperature survey with surface log readout will be used or a cement bond log shall be run to verify the top of the cement. Temperature survey will be run a minimum of six hours after pumping cement and ideally between 8-10 hours after completing the cement job.
 - b. Wait on cement (WOC) time for a primary cement job will be a minimum of **8 hours** or **500 pounds compressive strength**, whichever is greater. (This is to include the lead cement)
 - c. Wait on cement (WOC) time for a remedial job will be a minimum of 4 hours after bringing cement to surface or 500 pounds compressive strength, whichever is greater.

- d. If cement falls back, remedial cementing will be done prior to drilling out that string.
2. The minimum required fill of cement behind the **10-3/4** inch intermediate casing is:
 - Cement to surface. If cement does not circulate see B.1.a, c-d above. **Wait on cement (WOC) time for a primary cement job is to include the lead cement slurry due to cave/karst, Capitan Reef, or potash.**
 - ❖ In High Cave/Karst Areas if cement does not circulate to surface on the first two casing strings, the cement on the 3rd casing string must come to surface.
 - ❖ In Capitan Reef Areas if cement does not circulate to surface on the first two casing strings, the cement on the 3rd casing string must come to surface.
 - ❖ **Special Capitan Reef requirements.** Ensure freshwater based mud is used across the Capitan Reef.
 3. The minimum required fill of cement behind the **8-5/8** inch intermediate casing is:
 - Cement should tie-back at least **50 feet** on top of Capitan Reef top or **200 feet** into the previous casing, whichever is greater. If cement does not circulate see B.1.a, c-d above. **Wait on cement (WOC) time for a primary cement job is to include the lead cement slurry due to cave/karst, Capitan Reef, or potash.**
 4. The minimum required fill of cement behind the **5-1/2** inch production casing is:
 - Cement should tie-back at least **200 feet** into previous casing string. Operator shall provide method of verification. **Wait on cement (WOC) time for a primary cement job is to include the lead cement slurry due to cave/karst, Capitan Reef, or potash.**

C. PRESSURE CONTROL

1. Variance approved to use flex line from BOP to choke manifold. Manufacturer's specification to be readily available. No external damage to flex line. Flex line to be installed as straight as possible (no hard bends).
2. Operator has proposed a multi-bowl wellhead assembly. Minimum working pressure of the blowout preventer (BOP) and related equipment (BOPE) required for drilling below the surface casing shoe shall be **5000 (5M) psi**.
 - a. Wellhead shall be installed by manufacturer's representatives, submit documentation with subsequent sundry.
 - b. If the welding is performed by a third party, the manufacturer's representative shall monitor the temperature to verify that it does not exceed the maximum temperature of the seal.
 - c. Manufacturer representative shall install the test plug for the initial BOP test.

- d. If the cement does not circulate and one-inch operations would have been possible with a standard wellhead, the well head shall be cut off, cementing operations performed and another wellhead installed.
- e. Whenever any seal subject to test pressure is broken, all the tests in 43 CFR 3172 must be followed.

D. SPECIAL REQUIREMENT (S)

Communitization Agreement

- The operator will submit a Communitization Agreement to the Santa Fe Office, 301 Dinosaur Trail Santa Fe, New Mexico 87508, at least 90 days before the anticipated date of first production from a well subject to a spacing order issued by the New Mexico Oil Conservation Division. The Communitization Agreement will include the signatures of all working interest owners in all Federal and Indian leases subject to the Communitization Agreement (i.e., operating rights owners and lessees of record), or certification that the operator has obtained the written signatures of all such owners and will make those signatures available to the BLM immediately upon request.
- The operator will submit an as-drilled survey well plat of the well completion, but are not limited to, those specified in 43 CFR 3171 and 3172.
- If the operator does not comply with this condition of approval, the BLM may take enforcement actions that include, but are not limited to, those specified in 43 CFR 3163.1.
- In addition, the well sign shall include the surface and bottom hole lease numbers. When the Communitization Agreement number is known, it shall also be on the sign.

BOPE Break Testing Variance

- BOPE Break Testing is **ONLY** permitted for intervals utilizing a 5M BOPE or less. (**Annular preventer must be tested to a minimum of 70% of BOPE working pressure and shall be higher than the MASP.**)
- BOPE Break Testing is **NOT** permitted to drilling the production hole section.
- Variance only pertains to the intermediate hole-sections and no deeper than the Bone Springs formation.
- While in transfer between wells, the BOPE shall be secured by the hydraulic carrier or cradle.
- Any well control event while drilling require notification to the BLM Petroleum Engineer (575-706-2779) prior to the commencement of any BOPE Break Testing operations.
- A full BOPE test is required prior to drilling the first deep intermediate hole section. If any subsequent hole interval is deeper than the first, a full BOPE test will be required. (200' TVD tolerance between intermediate shoes is allowable).
- The BLM is to be contacted (575-361-2822 Eddy County) 4 hours prior to BOPE tests.
- As a minimum, a full BOPE test shall be performed at 21-day intervals.
- In the event any repairs or replacement of the BOPE is required, the BOPE shall test as per **43 CFR 3172**.
- If in the event break testing is not utilized, then a full BOPE test would be conducted.

Offline Cementing

Contact the BLM prior to the commencement of any offline cementing procedure.

GENERAL REQUIREMENTS

The BLM is to be notified in advance for a representative to witness:

- a. Spudding well (minimum of 24 hours)
- b. Setting and/or Cementing of all casing strings (minimum of 4 hours)
- c. BOPE tests (minimum of 4 hours)

Contact Eddy County Petroleum Engineering Inspection Staff:

Email or call the Carlsbad Field Office, 620 East Greene St., Carlsbad, NM 88220;

BLM NM CFO DrillingNotifications@BLM.GOV; (575) 361-2822

1. Unless the production casing has been run and cemented or the well has been properly plugged, the drilling rig shall not be removed from over the hole without prior approval.
 - a. In the event the operator has proposed to drill multiple wells utilizing a skid/walking rig. Operator shall secure the wellbore on the current well, after installing and testing the wellhead, by installing a blind flange of like pressure rating to the wellhead and a pressure gauge that can be monitored while drilling is performed on the other well(s).
 - b. When the operator proposes to set surface casing with Spudder Rig
 - i. Notify the BLM when moving in and removing the Spudder Rig.
 - ii. Notify the BLM when moving in the 2nd Rig. Rig to be moved in within 90 days of notification that Spudder Rig has left the location.
 - iii. BOP/BOPE test to be conducted per **43 CFR 3172** as soon as 2nd Rig is rigged up on well.
2. Floor controls are required for 3M or Greater systems. These controls will be on the rig floor, unobstructed, readily accessible to the driller and will be operational at all times during drilling and/or completion activities. Rig floor is defined as the area immediately around the rotary table; the area immediately above the substructure on which the draw works are located, this does not include the dog house or stairway area.
3. For intervals in which cement to surface is required, cement to surface should be verified with a visual check and density or pH check to differentiate cement from spacer and drilling mud. The results should be documented in the driller's log and daily reports.

A. CASING

1. Changes to the approved APD casing program need prior approval if the items substituted are of lesser grade or different casing size or are Non-API. The Operator can exchange the components of the proposal with that of superior strength (i.e. changing from J-55 to N-80, or from 36# to 40#). Changes to the approved cement program need prior approval if the altered cement plan has less volume or strength or if the changes are substantial (i.e. Multistage tool, ECP, etc.). The initial wellhead installed on the well will remain on the well with spools used as needed.
2. Wait on cement (WOC) for Potash Areas: After cementing but before commencing any tests, the casing string shall stand cemented under pressure until both of the following

- conditions have been met: 1) cement reaches a minimum compressive strength of 500 psi for all cement blends of both lead and tail cement, 2) until cement has been in place at least 8 hours. WOC time will be recorded in the driller's log. The casing integrity test can be done (prior to the cement setting up) immediately after bumping the plug.
3. Wait on cement (WOC) for Water Basin: After cementing but before commencing any tests, the casing string shall stand cemented under pressure until both of the following conditions have been met: 1) cement reaches a minimum compressive strength of 500 psi at the shoe, 2) until cement has been in place at least 8 hours. WOC time will be recorded in the driller's log. See individual casing strings for details regarding lead cement slurry requirements. The casing integrity test can be done (prior to the cement setting up) immediately after bumping the plug.
 4. Provide compressive strengths including hours to reach required 500 pounds compressive strength prior to cementing each casing string. Have well specific cement details onsite prior to pumping the cement for each casing string.
 5. No pea gravel permitted for remedial or fall back remedial without prior authorization from the BLM engineer.
 6. On that portion of any well approved for a 5M BOPE system or greater, a pressure integrity test of each casing shoe shall be performed. Formation at the shoe shall be tested to a minimum of the mud weight equivalent anticipated to control the formation pressure to the next casing depth or at total depth of the well. This test shall be performed before drilling more than 20 feet of new hole.
 7. If hardband drill pipe is rotated inside casing, returns will be monitored for metal. If metal is found in samples, drill pipe will be pulled and rubber protectors which have a larger diameter than the tool joints of the drill pipe will be installed prior to continuing drilling operations.
 8. Whenever a casing string is cemented in the R-111-Q potash area, the NMOC requirements shall be followed.

B. PRESSURE CONTROL

1. All blowout preventer (BOP) and related equipment (BOPE) shall comply with well control requirements as described in **43 CFR 3172**.
2. If a variance is approved for a flexible hose to be installed from the BOP to the choke manifold, the following requirements apply: The flex line must meet the requirements of API 16C. Check condition of flexible line from BOP to choke manifold, replace if exterior is damaged or if line fails test. Line to be as straight as possible with no hard bends and is to be anchored according to Manufacturer's requirements. The flexible hose can be exchanged with a hose of equal size and equal or greater pressure rating. Anchor requirements, specification sheet and hydrostatic pressure test certification matching the hose in service, to be onsite for review. These documents shall be posted in the company man's trailer and on the rig floor.

3. 5M or higher system requires an HCR valve, remote kill line and annular to match. The remote kill line is to be installed prior to testing the system and tested to stack pressure.
4. If the operator has proposed a multi-bowl wellhead assembly in the APD. The following requirements must be met:
 - i. Wellhead shall be installed by manufacturer's representatives, submit documentation with subsequent sundry.
 - ii. If the welding is performed by a third party, the manufacturer's representative shall monitor the temperature to verify that it does not exceed the maximum temperature of the seal.
 - iii. Manufacturer representative shall install the test plug for the initial BOP test.
 - iv. Whenever any seal subject to test pressure is broken, all the tests in 43 CFR 3172.6(b)(9) must be followed.
 - v. If the cement does not circulate and one inch operations would have been possible with a standard wellhead, the well head shall be cut off, cementing operations performed and another wellhead installed.
5. The appropriate BLM office shall be notified a minimum of 4 hours in advance for a representative to witness the tests.
 - i. In a water basin, for all casing strings utilizing slips, these are to be set as soon as the crew and rig are ready and any fallback cement remediation has been done. The casing cut-off and BOP installation can be initiated four hours after installing the slips, which will be approximately six hours after bumping the plug. For those casing strings not using slips, the minimum wait time before cut-off is eight hours after bumping the plug. BOP/BOPE testing can begin after cut-off or once cement reaches 500 psi compressive strength (including lead cement), whichever is greater. However, if the float does not hold, cut-off cannot be initiated until cement reaches 500 psi compressive strength (including lead when specified).
 - ii. In potash areas, for all casing strings utilizing slips, these are to be set as soon as the crew and rig are ready and any fallback cement remediation has been done. For all casing strings, casing cut-off and BOP installation can be initiated at twelve hours after bumping the cement plug. The BOPE test can be initiated after bumping the cement plug with the casing valve open. (only applies to single stage cement jobs, prior to the cement setting up.)
 - iii. The tests shall be done by an independent service company utilizing a test plug not a cup or J-packer and can be initiated immediately with the casing valve open. The operator also has the option of utilizing an independent tester to test without a plug (i.e. against the casing) pursuant to 43 CFR 3172 with the pressure not to exceed 70% of the burst rating for the casing. Any test against the casing must meet the WOC time for 8 hours or 500 pounds compressive strength, whichever is greater, prior to initiating the test (see casing segment as lead cement may be critical item).

- iv. The test shall be run on a 5000 psi chart for a 2-3M BOP/BOP, on a 10000 psi chart for a 5M BOP/BOPE and on a 15000 psi chart for a 10M BOP/BOPE. If a linear chart is used, it shall be a one hour chart. A circular chart shall have a maximum 2 hour clock. If a twelve hour or twenty-four hour chart is used, tester shall make a notation that it is run with a two hour clock.
- v. The results of the test shall be reported to the appropriate BLM office.
- vi. All tests are required to be recorded on a calibrated test chart. A copy of the BOP/BOPE test chart and a copy of independent service company test will be submitted to the appropriate BLM office.
- vii. The BOP/BOPE test shall include a low pressure test from 250 to 300 psi. The test will be held for a minimum of 10 minutes if test is done with a test plug and 30 minutes without a test plug. This test shall be performed prior to the test at full stack pressure.
- viii. BOP/BOPE must be tested by an independent service company within 500 feet of the top of the Wolfcamp formation if the time between the setting of the intermediate casing and reaching this depth exceeds 20 days. This test does not exclude the test prior to drilling out the casing shoe as per **43 CFR 3172**.

C. DRILLING MUD

Mud system monitoring equipment, with derrick floor indicators and visual and audio alarms, shall be operating before drilling into the Wolfcamp formation, and shall be used until production casing is run and cemented.

D. WASTE MATERIAL AND FLUIDS

All waste (i.e. drilling fluids, trash, salts, chemicals, sewage, gray water, etc.) created as a result of drilling operations and completion operations shall be safely contained and disposed of properly at a waste disposal facility. No waste material or fluid shall be disposed of on the well location or surrounding area. Porto-johns and trash containers will be on-location during fracturing operations or any other crew-intensive operations.

NEW MEXICO

(SP) EDDY

BONDI 24 FED COM PROJECT

BONDI 24 FED COM 132H

OWB

Plan: PWP0

Standard Planning Report - Geographic

15 February, 2024

Permian Resources

Planning Report - Geographic

Database:	Compass	Local Co-ordinate Reference:	Well BONDI 24 FED COM 132H
Company:	NEW MEXICO	TVD Reference:	KB @ 3277.4usft
Project:	(SP) EDDY	MD Reference:	KB @ 3277.4usft
Site:	BONDI 24 FED COM PROJECT	North Reference:	Grid
Well:	BONDI 24 FED COM 132H	Survey Calculation Method:	Minimum Curvature
Wellbore:	OWB		
Design:	PWP0		

Project	(SP) EDDY		
Map System:	US State Plane 1983	System Datum:	Mean Sea Level
Geo Datum:	North American Datum 1983		
Map Zone:	New Mexico Eastern Zone		

Site	BONDI 24 FED COM PROJECT				
Site Position:	Northing:	605,813.82 usft	Latitude:	32° 39' 55.450 N	
From:	Map	Easting:	565,984.60 usft	Longitude:	104° 15' 11.663 W
Position Uncertainty:	0.0 usft	Slot Radius:	13-3/16 "		

Well	BONDI 24 FED COM 132H					
Well Position	+N/-S	0.0 usft	Northing:	569,043.95 usft	Latitude:	32° 33' 51.059 N
	+E/-W	0.0 usft	Easting:	605,857.23 usft	Longitude:	104° 7' 26.057 W
Position Uncertainty	0.0 usft	Wellhead Elevation:	usft	Ground Level:	3,247.4 usft	
Grid Convergence:	0.11 °					

Wellbore	OWB				
Magnetics	Model Name	Sample Date	Declination (°)	Dip Angle (°)	Field Strength (nT)
	IGRF200510	12/31/2009	8.03	60.46	48,937.53367511

Design	PWP0				
Audit Notes:					
Version:	Phase:	PROTOTYPE	Tie On Depth:	0.0	
Vertical Section:	Depth From (TVD) (usft)	+N/-S (usft)	+E/-W (usft)	Direction (°)	
	0.0	0.0	0.0	265.13	

Plan Survey Tool Program	Date 2/15/2024				
Depth From (usft)	Depth To (usft)	Survey (Wellbore)	Tool Name	Remarks	
1	0.0	19,425.1 PWP0 (OWB)	MWD		
			OWSG_Rev2_ MWD - Star		

Plan Sections										
Measured Depth (usft)	Inclination (°)	Azimuth (°)	Vertical Depth (usft)	+N/-S (usft)	+E/-W (usft)	Dogleg Rate (°/100usft)	Build Rate (°/100usft)	Turn Rate (°/100usft)	TFO (°)	Target
0.0	0.00	0.00	0.0	0.0	0.0	0.00	0.00	0.00	0.00	
2,000.0	0.00	0.00	2,000.0	0.0	0.0	0.00	0.00	0.00	0.00	
2,600.0	12.00	152.84	2,595.6	-55.7	28.6	2.00	2.00	0.00	152.84	
6,544.7	12.00	152.84	6,454.2	-785.4	403.0	0.00	0.00	0.00	0.00	
7,144.7	0.00	0.00	7,049.8	-841.1	431.6	2.00	-2.00	0.00	180.00	
8,567.5	0.00	0.00	8,472.5	-841.1	431.6	0.00	0.00	0.00	0.00	
9,317.5	90.00	269.87	8,950.0	-842.2	-45.9	12.00	12.00	-12.02	269.87	
19,425.6	90.00	269.87	8,950.0	-865.9	-10,154.0	0.00	0.00	0.00	0.00	BHL-BONDI 24 FC

Permian Resources

Planning Report - Geographic

Database:	Compass	Local Co-ordinate Reference:	Well BONDI 24 FED COM 132H
Company:	NEW MEXICO	TVD Reference:	KB @ 3277.4usft
Project:	(SP) EDDY	MD Reference:	KB @ 3277.4usft
Site:	BONDI 24 FED COM PROJECT	North Reference:	Grid
Well:	BONDI 24 FED COM 132H	Survey Calculation Method:	Minimum Curvature
Wellbore:	OWB		
Design:	PWP0		

Planned Survey

Measured Depth (usft)	Inclination (°)	Azimuth (°)	Vertical Depth (usft)	+N/-S (usft)	+E/-W (usft)	Map Northing (usft)	Map Easting (usft)	Latitude	Longitude
0.0	0.00	0.00	0.0	0.0	0.0	569,043.95	605,857.23	32° 33' 51.059 N	104° 7' 26.057 W
Queen (TVD) - Grayburg (TVD)									
100.0	0.00	0.00	100.0	0.0	0.0	569,043.95	605,857.23	32° 33' 51.059 N	104° 7' 26.057 W
125.0	0.00	0.00	125.0	0.0	0.0	569,043.95	605,857.23	32° 33' 51.059 N	104° 7' 26.057 W
Rustler (TVD)									
200.0	0.00	0.00	200.0	0.0	0.0	569,043.95	605,857.23	32° 33' 51.059 N	104° 7' 26.057 W
300.0	0.00	0.00	300.0	0.0	0.0	569,043.95	605,857.23	32° 33' 51.059 N	104° 7' 26.057 W
327.0	0.00	0.00	327.0	0.0	0.0	569,043.95	605,857.23	32° 33' 51.059 N	104° 7' 26.057 W
Salado = T/Salt (TVD)									
400.0	0.00	0.00	400.0	0.0	0.0	569,043.95	605,857.23	32° 33' 51.059 N	104° 7' 26.057 W
500.0	0.00	0.00	500.0	0.0	0.0	569,043.95	605,857.23	32° 33' 51.059 N	104° 7' 26.057 W
600.0	0.00	0.00	600.0	0.0	0.0	569,043.95	605,857.23	32° 33' 51.059 N	104° 7' 26.057 W
700.0	0.00	0.00	700.0	0.0	0.0	569,043.95	605,857.23	32° 33' 51.059 N	104° 7' 26.057 W
800.0	0.00	0.00	800.0	0.0	0.0	569,043.95	605,857.23	32° 33' 51.059 N	104° 7' 26.057 W
841.0	0.00	0.00	841.0	0.0	0.0	569,043.95	605,857.23	32° 33' 51.059 N	104° 7' 26.057 W
Tansill (TVD)									
900.0	0.00	0.00	900.0	0.0	0.0	569,043.95	605,857.23	32° 33' 51.059 N	104° 7' 26.057 W
940.0	0.00	0.00	940.0	0.0	0.0	569,043.95	605,857.23	32° 33' 51.059 N	104° 7' 26.057 W
Yates (TVD)									
1,000.0	0.00	0.00	1,000.0	0.0	0.0	569,043.95	605,857.23	32° 33' 51.059 N	104° 7' 26.057 W
1,100.0	0.00	0.00	1,100.0	0.0	0.0	569,043.95	605,857.23	32° 33' 51.059 N	104° 7' 26.057 W
1,200.0	0.00	0.00	1,200.0	0.0	0.0	569,043.95	605,857.23	32° 33' 51.059 N	104° 7' 26.057 W
1,238.0	0.00	0.00	1,238.0	0.0	0.0	569,043.95	605,857.23	32° 33' 51.059 N	104° 7' 26.057 W
Seven Rivers (TVD)									
1,300.0	0.00	0.00	1,300.0	0.0	0.0	569,043.95	605,857.23	32° 33' 51.059 N	104° 7' 26.057 W
1,328.0	0.00	0.00	1,328.0	0.0	0.0	569,043.95	605,857.23	32° 33' 51.059 N	104° 7' 26.057 W
Capitan (if applicable) (TVD)									
1,400.0	0.00	0.00	1,400.0	0.0	0.0	569,043.95	605,857.23	32° 33' 51.059 N	104° 7' 26.057 W
1,500.0	0.00	0.00	1,500.0	0.0	0.0	569,043.95	605,857.23	32° 33' 51.059 N	104° 7' 26.057 W
1,600.0	0.00	0.00	1,600.0	0.0	0.0	569,043.95	605,857.23	32° 33' 51.059 N	104° 7' 26.057 W
1,700.0	0.00	0.00	1,700.0	0.0	0.0	569,043.95	605,857.23	32° 33' 51.059 N	104° 7' 26.057 W
1,800.0	0.00	0.00	1,800.0	0.0	0.0	569,043.95	605,857.23	32° 33' 51.059 N	104° 7' 26.057 W
1,900.0	0.00	0.00	1,900.0	0.0	0.0	569,043.95	605,857.23	32° 33' 51.059 N	104° 7' 26.057 W
2,000.0	0.00	0.00	2,000.0	0.0	0.0	569,043.95	605,857.23	32° 33' 51.059 N	104° 7' 26.057 W
Start Build 2.00									
2,100.0	2.00	152.84	2,100.0	-1.6	0.8	569,042.40	605,858.03	32° 33' 51.044 N	104° 7' 26.048 W
2,200.0	4.00	152.84	2,199.8	-6.2	3.2	569,037.74	605,860.42	32° 33' 50.998 N	104° 7' 26.020 W
2,300.0	6.00	152.84	2,299.5	-14.0	7.2	569,029.99	605,864.40	32° 33' 50.921 N	104° 7' 25.974 W
2,400.0	8.00	152.84	2,398.7	-24.8	12.7	569,019.15	605,869.96	32° 33' 50.813 N	104° 7' 25.909 W
2,500.0	10.00	152.84	2,497.5	-38.7	19.9	569,005.23	605,877.10	32° 33' 50.675 N	104° 7' 25.826 W
2,600.0	12.00	152.84	2,595.6	-55.7	28.6	568,988.26	605,885.81	32° 33' 50.507 N	104° 7' 25.725 W
Start 3944.7 hold at 2600.0 MD									
2,700.0	12.00	152.84	2,693.4	-74.2	38.1	568,969.76	605,895.31	32° 33' 50.324 N	104° 7' 25.614 W
2,776.2	12.00	152.84	2,768.0	-88.3	45.3	568,955.66	605,902.54	32° 33' 50.184 N	104° 7' 25.530 W
San Andres (TVD)									
2,800.0	12.00	152.84	2,791.3	-92.7	47.6	568,951.26	605,904.80	32° 33' 50.141 N	104° 7' 25.504 W
2,900.0	12.00	152.84	2,889.1	-111.2	57.1	568,932.76	605,914.29	32° 33' 49.958 N	104° 7' 25.393 W
3,000.0	12.00	152.84	2,986.9	-129.7	66.5	568,914.26	605,923.78	32° 33' 49.774 N	104° 7' 25.283 W
3,100.0	12.00	152.84	3,084.7	-148.2	76.0	568,895.77	605,933.27	32° 33' 49.591 N	104° 7' 25.172 W
3,195.4	12.00	152.84	3,178.0	-165.8	85.1	568,878.12	605,942.33	32° 33' 49.416 N	104° 7' 25.067 W
Delaware Sands = CYCN (TVD)									
3,200.0	12.00	152.84	3,182.5	-166.7	85.5	568,877.27	605,942.77	32° 33' 49.408 N	104° 7' 25.062 W
3,300.0	12.00	152.84	3,280.3	-185.2	95.0	568,858.77	605,952.26	32° 33' 49.225 N	104° 7' 24.951 W

Permian Resources

Planning Report - Geographic

Database:	Compass	Local Co-ordinate Reference:	Well BOND1 24 FED COM 132H
Company:	NEW MEXICO	TVD Reference:	KB @ 3277.4usft
Project:	(SP) EDDY	MD Reference:	KB @ 3277.4usft
Site:	BOND1 24 FED COM PROJECT	North Reference:	Grid
Well:	BOND1 24 FED COM 132H	Survey Calculation Method:	Minimum Curvature
Wellbore:	OWB		
Design:	PWP0		

Planned Survey

Measured Depth (usft)	Inclination (°)	Azimuth (°)	Vertical Depth (usft)	+N/-S (usft)	+E/-W (usft)	Map Northing (usft)	Map Easting (usft)	Latitude	Longitude
3,400.0	12.00	152.84	3,378.1	-203.7	104.5	568,840.27	605,961.75	32° 33' 49.041 N	104° 7' 24.841 W
3,500.0	12.00	152.84	3,476.0	-222.2	114.0	568,821.77	605,971.24	32° 33' 48.858 N	104° 7' 24.730 W
3,600.0	12.00	152.84	3,573.8	-240.7	123.5	568,803.28	605,980.74	32° 33' 48.675 N	104° 7' 24.620 W
3,700.0	12.00	152.84	3,671.6	-259.2	133.0	568,784.78	605,990.23	32° 33' 48.492 N	104° 7' 24.509 W
3,800.0	12.00	152.84	3,769.4	-277.7	142.5	568,766.28	605,999.72	32° 33' 48.309 N	104° 7' 24.399 W
3,900.0	12.00	152.84	3,867.2	-296.2	152.0	568,747.78	606,009.21	32° 33' 48.125 N	104° 7' 24.288 W
3,993.8	12.00	152.84	3,959.0	-313.5	160.9	568,730.42	606,018.12	32° 33' 47.953 N	104° 7' 24.185 W
BYCN									
4,000.0	12.00	152.84	3,965.0	-314.7	161.5	568,729.28	606,018.70	32° 33' 47.942 N	104° 7' 24.178 W
4,100.0	12.00	152.84	4,062.8	-333.2	171.0	568,710.79	606,028.20	32° 33' 47.759 N	104° 7' 24.067 W
4,200.0	12.00	152.84	4,160.7	-351.7	180.5	568,692.29	606,037.69	32° 33' 47.576 N	104° 7' 23.957 W
4,300.0	12.00	152.84	4,258.5	-370.2	189.9	568,673.79	606,047.18	32° 33' 47.392 N	104° 7' 23.846 W
4,400.0	12.00	152.84	4,356.3	-388.7	199.4	568,655.29	606,056.67	32° 33' 47.209 N	104° 7' 23.736 W
4,500.0	12.00	152.84	4,454.1	-407.2	208.9	568,636.79	606,066.16	32° 33' 47.026 N	104° 7' 23.625 W
4,600.0	12.00	152.84	4,551.9	-425.7	218.4	568,618.30	606,075.66	32° 33' 46.843 N	104° 7' 23.515 W
4,700.0	12.00	152.84	4,649.7	-444.2	227.9	568,599.80	606,085.15	32° 33' 46.659 N	104° 7' 23.404 W
4,800.0	12.00	152.84	4,747.5	-462.7	237.4	568,581.30	606,094.64	32° 33' 46.476 N	104° 7' 23.294 W
4,900.0	12.00	152.84	4,845.4	-481.1	246.9	568,562.80	606,104.13	32° 33' 46.293 N	104° 7' 23.183 W
5,000.0	12.00	152.84	4,943.2	-499.6	256.4	568,544.31	606,113.62	32° 33' 46.110 N	104° 7' 23.073 W
5,100.0	12.00	152.84	5,041.0	-518.1	265.9	568,525.81	606,123.12	32° 33' 45.927 N	104° 7' 22.962 W
5,200.0	12.00	152.84	5,138.8	-536.6	275.4	568,507.31	606,132.61	32° 33' 45.743 N	104° 7' 22.852 W
5,300.0	12.00	152.84	5,236.6	-555.1	284.9	568,488.81	606,142.10	32° 33' 45.560 N	104° 7' 22.741 W
5,400.0	12.00	152.84	5,334.4	-573.6	294.4	568,470.31	606,151.59	32° 33' 45.377 N	104° 7' 22.631 W
5,500.0	12.00	152.84	5,432.3	-592.1	303.9	568,451.82	606,161.08	32° 33' 45.194 N	104° 7' 22.520 W
5,508.9	12.00	152.84	5,441.0	-593.8	304.7	568,450.16	606,161.93	32° 33' 45.177 N	104° 7' 22.511 W
Bone Spring = BSLG (TVD)									
5,600.0	12.00	152.84	5,530.1	-610.6	313.3	568,433.32	606,170.58	32° 33' 45.010 N	104° 7' 22.410 W
5,700.0	12.00	152.84	5,627.9	-629.1	322.8	568,414.82	606,180.07	32° 33' 44.827 N	104° 7' 22.299 W
5,800.0	12.00	152.84	5,725.7	-647.6	332.3	568,396.32	606,189.56	32° 33' 44.644 N	104° 7' 22.189 W
5,900.0	12.00	152.84	5,823.5	-666.1	341.8	568,377.82	606,199.05	32° 33' 44.461 N	104° 7' 22.078 W
6,000.0	12.00	152.84	5,921.3	-684.6	351.3	568,359.33	606,208.55	32° 33' 44.277 N	104° 7' 21.968 W
6,100.0	12.00	152.84	6,019.1	-703.1	360.8	568,340.83	606,218.04	32° 33' 44.094 N	104° 7' 21.857 W
6,200.0	12.00	152.84	6,117.0	-721.6	370.3	568,322.33	606,227.53	32° 33' 43.911 N	104° 7' 21.747 W
6,300.0	12.00	152.84	6,214.8	-740.1	379.8	568,303.83	606,237.02	32° 33' 43.728 N	104° 7' 21.636 W
6,400.0	12.00	152.84	6,312.6	-758.6	389.3	568,285.33	606,246.51	32° 33' 43.545 N	104° 7' 21.526 W
6,500.0	12.00	152.84	6,410.4	-777.1	398.8	568,266.84	606,256.01	32° 33' 43.361 N	104° 7' 21.416 W
6,544.7	12.00	152.84	6,454.2	-785.4	403.0	568,258.56	606,260.25	32° 33' 43.279 N	104° 7' 21.366 W
Start Drop -2.00									
6,600.0	10.89	152.84	6,508.3	-795.1	408.0	568,248.80	606,265.26	32° 33' 43.183 N	104° 7' 21.308 W
6,700.0	8.89	152.84	6,606.8	-810.4	415.9	568,233.52	606,273.10	32° 33' 43.031 N	104° 7' 21.216 W
6,800.0	6.89	152.84	6,705.9	-822.7	422.1	568,221.30	606,279.38	32° 33' 42.910 N	104° 7' 21.143 W
6,897.6	4.94	152.84	6,803.0	-831.6	426.7	568,212.34	606,283.97	32° 33' 42.821 N	104° 7' 21.090 W
FBSG (TVD)									
6,900.0	4.89	152.84	6,805.3	-831.8	426.8	568,212.16	606,284.06	32° 33' 42.820 N	104° 7' 21.089 W
7,000.0	2.89	152.84	6,905.1	-837.8	429.9	568,206.12	606,287.16	32° 33' 42.760 N	104° 7' 21.053 W
7,100.0	0.89	152.84	7,005.0	-840.8	431.4	568,203.17	606,288.67	32° 33' 42.731 N	104° 7' 21.035 W
7,144.7	0.00	0.00	7,049.8	-841.1	431.6	568,202.86	606,288.83	32° 33' 42.728 N	104° 7' 21.033 W
Start 1422.7 hold at 7144.7 MD									
7,200.0	0.00	0.00	7,105.0	-841.1	431.6	568,202.86	606,288.83	32° 33' 42.728 N	104° 7' 21.033 W
7,300.0	0.00	0.00	7,205.0	-841.1	431.6	568,202.86	606,288.83	32° 33' 42.728 N	104° 7' 21.033 W
7,400.0	0.00	0.00	7,305.0	-841.1	431.6	568,202.86	606,288.83	32° 33' 42.728 N	104° 7' 21.033 W
7,433.0	0.00	0.00	7,338.0	-841.1	431.6	568,202.86	606,288.83	32° 33' 42.728 N	104° 7' 21.033 W
SBSG (TVD)									
7,500.0	0.00	0.00	7,405.0	-841.1	431.6	568,202.86	606,288.83	32° 33' 42.728 N	104° 7' 21.033 W

Permian Resources

Planning Report - Geographic

Database: Compass
 Company: NEW MEXICO
 Project: (SP) EDDY
 Site: BONDI 24 FED COM PROJECT
 Well: BONDI 24 FED COM 132H
 Wellbore: OWB
 Design: PWP0

Local Co-ordinate Reference: Well BONDI 24 FED COM 132H
 TVD Reference: KB @ 3277.4usft
 MD Reference: KB @ 3277.4usft
 North Reference: Grid
 Survey Calculation Method: Minimum Curvature

Planned Survey

Measured Depth (usft)	Inclination (°)	Azimuth (°)	Vertical Depth (usft)	+N/-S (usft)	+E/-W (usft)	Map Northing (usft)	Map Easting (usft)	Latitude	Longitude
7,600.0	0.00	0.00	7,505.0	-841.1	431.6	568,202.86	606,288.83	32° 33' 42.728 N	104° 7' 21.033 W
7,700.0	0.00	0.00	7,605.0	-841.1	431.6	568,202.86	606,288.83	32° 33' 42.728 N	104° 7' 21.033 W
7,800.0	0.00	0.00	7,705.0	-841.1	431.6	568,202.86	606,288.83	32° 33' 42.728 N	104° 7' 21.033 W
7,900.0	0.00	0.00	7,805.0	-841.1	431.6	568,202.86	606,288.83	32° 33' 42.728 N	104° 7' 21.033 W
8,000.0	0.00	0.00	7,905.0	-841.1	431.6	568,202.86	606,288.83	32° 33' 42.728 N	104° 7' 21.033 W
8,100.0	0.00	0.00	8,005.0	-841.1	431.6	568,202.86	606,288.83	32° 33' 42.728 N	104° 7' 21.033 W
8,200.0	0.00	0.00	8,105.0	-841.1	431.6	568,202.86	606,288.83	32° 33' 42.728 N	104° 7' 21.033 W
8,300.0	0.00	0.00	8,205.0	-841.1	431.6	568,202.86	606,288.83	32° 33' 42.728 N	104° 7' 21.033 W
8,400.0	0.00	0.00	8,305.0	-841.1	431.6	568,202.86	606,288.83	32° 33' 42.728 N	104° 7' 21.033 W
8,500.0	0.00	0.00	8,405.0	-841.1	431.6	568,202.86	606,288.83	32° 33' 42.728 N	104° 7' 21.033 W
8,567.5	0.00	0.00	8,472.5	-841.1	431.6	568,202.86	606,288.83	32° 33' 42.728 N	104° 7' 21.033 W
Start DLS 12.00 TFO 269.87									
8,575.0	0.91	269.87	8,480.0	-841.1	431.5	568,202.86	606,288.77	32° 33' 42.728 N	104° 7' 21.034 W
8,600.0	3.91	269.87	8,505.0	-841.1	430.5	568,202.86	606,287.72	32° 33' 42.728 N	104° 7' 21.046 W
8,625.0	6.91	269.87	8,529.9	-841.1	428.1	568,202.85	606,285.37	32° 33' 42.728 N	104° 7' 21.074 W
8,650.0	9.91	269.87	8,554.6	-841.1	424.5	568,202.85	606,281.72	32° 33' 42.728 N	104° 7' 21.117 W
8,675.0	12.91	269.87	8,579.1	-841.1	419.5	568,202.83	606,276.77	32° 33' 42.728 N	104° 7' 21.174 W
8,700.0	15.91	269.87	8,603.3	-841.1	413.3	568,202.82	606,270.55	32° 33' 42.728 N	104° 7' 21.247 W
8,725.0	18.91	269.87	8,627.2	-841.2	405.8	568,202.80	606,263.08	32° 33' 42.728 N	104° 7' 21.334 W
8,750.0	21.91	269.87	8,650.6	-841.2	397.1	568,202.78	606,254.36	32° 33' 42.728 N	104° 7' 21.436 W
8,775.0	24.91	269.87	8,673.6	-841.2	387.2	568,202.76	606,244.43	32° 33' 42.727 N	104° 7' 21.552 W
8,800.0	27.91	269.87	8,696.0	-841.2	376.1	568,202.73	606,233.32	32° 33' 42.727 N	104° 7' 21.682 W
8,825.0	30.91	269.87	8,717.7	-841.2	363.8	568,202.70	606,221.04	32° 33' 42.727 N	104° 7' 21.826 W
8,837.1	32.35	269.87	8,728.0	-841.3	357.5	568,202.69	606,214.72	32° 33' 42.727 N	104° 7' 21.899 W
TBSG (TVD)									
8,850.0	33.91	269.87	8,738.8	-841.3	350.4	568,202.67	606,207.65	32° 33' 42.727 N	104° 7' 21.982 W
8,875.0	36.91	269.87	8,759.2	-841.3	335.9	568,202.64	606,193.16	32° 33' 42.727 N	104° 7' 22.151 W
8,900.0	39.91	269.87	8,778.8	-841.4	320.4	568,202.60	606,177.64	32° 33' 42.727 N	104° 7' 22.333 W
8,925.0	42.91	269.87	8,797.6	-841.4	303.9	568,202.56	606,161.10	32° 33' 42.727 N	104° 7' 22.526 W
8,950.0	45.91	269.87	8,815.4	-841.4	286.4	568,202.52	606,143.61	32° 33' 42.727 N	104° 7' 22.730 W
8,975.0	48.91	269.87	8,832.3	-841.5	268.0	568,202.48	606,125.21	32° 33' 42.727 N	104° 7' 22.945 W
9,000.0	51.91	269.87	8,848.3	-841.5	248.7	568,202.43	606,105.95	32° 33' 42.727 N	104° 7' 23.170 W
9,025.0	54.91	269.87	8,863.2	-841.6	228.6	568,202.39	606,085.88	32° 33' 42.727 N	104° 7' 23.405 W
9,050.0	57.91	269.87	8,877.0	-841.6	207.8	568,202.34	606,065.06	32° 33' 42.727 N	104° 7' 23.648 W
9,075.0	60.91	269.87	8,889.7	-841.7	186.3	568,202.29	606,043.54	32° 33' 42.727 N	104° 7' 23.900 W
9,100.0	63.91	269.87	8,901.3	-841.7	164.2	568,202.24	606,021.39	32° 33' 42.727 N	104° 7' 24.159 W
9,125.0	66.91	269.87	8,911.7	-841.8	141.4	568,202.18	605,998.66	32° 33' 42.727 N	104° 7' 24.424 W
9,150.0	69.91	269.87	8,920.9	-841.8	118.2	568,202.13	605,975.41	32° 33' 42.726 N	104° 7' 24.696 W
9,175.0	72.91	269.87	8,928.9	-841.9	94.5	568,202.07	605,951.72	32° 33' 42.726 N	104° 7' 24.973 W
9,200.0	75.91	269.87	8,935.6	-841.9	70.4	568,202.02	605,927.64	32° 33' 42.726 N	104° 7' 25.254 W
9,225.0	78.91	269.87	8,941.0	-842.0	46.0	568,201.96	605,903.25	32° 33' 42.726 N	104° 7' 25.539 W
9,250.0	81.91	269.87	8,945.2	-842.1	21.4	568,201.90	605,878.60	32° 33' 42.726 N	104° 7' 25.827 W
9,275.0	84.91	269.87	8,948.1	-842.1	-3.5	568,201.84	605,853.77	32° 33' 42.726 N	104° 7' 26.117 W
9,300.0	87.91	269.87	8,949.6	-842.2	-28.4	568,201.78	605,828.82	32° 33' 42.726 N	104° 7' 26.409 W
9,317.5	90.00	269.87	8,950.0	-842.2	-45.9	568,201.74	605,811.37	32° 33' 42.726 N	104° 7' 26.613 W
Start 10108.2 hold at 9317.5 MD									
9,400.0	90.00	269.87	8,950.0	-842.4	-128.4	568,201.55	605,728.83	32° 33' 42.726 N	104° 7' 27.577 W
9,500.0	90.00	269.87	8,950.0	-842.6	-228.4	568,201.32	605,628.83	32° 33' 42.725 N	104° 7' 28.746 W
9,600.0	90.00	269.87	8,950.0	-842.9	-328.4	568,201.08	605,528.83	32° 33' 42.725 N	104° 7' 29.914 W
9,700.0	90.00	269.87	8,950.0	-843.1	-428.4	568,200.85	605,428.83	32° 33' 42.724 N	104° 7' 31.083 W
9,800.0	90.00	269.87	8,950.0	-843.3	-528.4	568,200.61	605,328.83	32° 33' 42.724 N	104° 7' 32.251 W
9,900.0	90.00	269.87	8,950.0	-843.6	-628.4	568,200.38	605,228.83	32° 33' 42.724 N	104° 7' 33.420 W
10,000.0	90.00	269.87	8,950.0	-843.8	-728.4	568,200.14	605,128.83	32° 33' 42.723 N	104° 7' 34.588 W
10,100.0	90.00	269.87	8,950.0	-844.0	-828.4	568,199.91	605,028.83	32° 33' 42.723 N	104° 7' 35.757 W

Permian Resources

Planning Report - Geographic

Database:	Compass	Local Co-ordinate Reference:	Well BONDI 24 FED COM 132H
Company:	NEW MEXICO	TVD Reference:	KB @ 3277.4usft
Project:	(SP) EDDY	MD Reference:	KB @ 3277.4usft
Site:	BONDI 24 FED COM PROJECT	North Reference:	Grid
Well:	BONDI 24 FED COM 132H	Survey Calculation Method:	Minimum Curvature
Wellbore:	OWB		
Design:	PWP0		

Planned Survey

Measured Depth (usft)	Inclination (°)	Azimuth (°)	Vertical Depth (usft)	+N/-S (usft)	+E/-W (usft)	Map Northing (usft)	Map Easting (usft)	Latitude	Longitude
10,200.0	90.00	269.87	8,950.0	-844.3	-928.4	568,199.68	604,928.83	32° 33' 42.722 N	104° 7' 36.925 W
10,300.0	90.00	269.87	8,950.0	-844.5	-1,028.4	568,199.44	604,828.83	32° 33' 42.722 N	104° 7' 38.094 W
10,400.0	90.00	269.87	8,950.0	-844.7	-1,128.4	568,199.21	604,728.83	32° 33' 42.722 N	104° 7' 39.262 W
10,500.0	90.00	269.87	8,950.0	-845.0	-1,228.4	568,198.97	604,628.83	32° 33' 42.721 N	104° 7' 40.431 W
10,600.0	90.00	269.87	8,950.0	-845.2	-1,328.4	568,198.74	604,528.83	32° 33' 42.721 N	104° 7' 41.599 W
10,700.0	90.00	269.87	8,950.0	-845.4	-1,428.4	568,198.50	604,428.83	32° 33' 42.720 N	104° 7' 42.768 W
10,800.0	90.00	269.87	8,950.0	-845.7	-1,528.4	568,198.27	604,328.83	32° 33' 42.720 N	104° 7' 43.936 W
10,900.0	90.00	269.87	8,950.0	-845.9	-1,628.4	568,198.03	604,228.83	32° 33' 42.720 N	104° 7' 45.105 W
11,000.0	90.00	269.87	8,950.0	-846.2	-1,728.4	568,197.80	604,128.83	32° 33' 42.719 N	104° 7' 46.273 W
11,100.0	90.00	269.87	8,950.0	-846.4	-1,828.4	568,197.57	604,028.83	32° 33' 42.719 N	104° 7' 47.442 W
11,200.0	90.00	269.87	8,950.0	-846.6	-1,928.4	568,197.33	603,928.83	32° 33' 42.718 N	104° 7' 48.610 W
11,300.0	90.00	269.87	8,950.0	-846.9	-2,028.4	568,197.10	603,828.83	32° 33' 42.718 N	104° 7' 49.779 W
11,400.0	90.00	269.87	8,950.0	-847.1	-2,128.4	568,196.86	603,728.83	32° 33' 42.717 N	104° 7' 50.947 W
11,459.0	90.00	269.87	8,950.0	-847.2	-2,187.4	568,196.72	603,669.85	32° 33' 42.717 N	104° 7' 51.637 W
NMMN 100255 Exit at 11459.0 MD									
11,500.0	90.00	269.87	8,950.0	-847.3	-2,228.4	568,196.63	603,628.83	32° 33' 42.717 N	104° 7' 52.116 W
11,600.0	90.00	269.87	8,950.0	-847.6	-2,328.4	568,196.39	603,528.83	32° 33' 42.717 N	104° 7' 53.284 W
11,700.0	90.00	269.87	8,950.0	-847.8	-2,428.4	568,196.16	603,428.83	32° 33' 42.716 N	104° 7' 54.453 W
11,800.0	90.00	269.87	8,950.0	-848.0	-2,528.4	568,195.93	603,328.83	32° 33' 42.716 N	104° 7' 55.621 W
11,900.0	90.00	269.87	8,950.0	-848.3	-2,628.4	568,195.69	603,228.83	32° 33' 42.715 N	104° 7' 56.790 W
12,000.0	90.00	269.87	8,950.0	-848.5	-2,728.4	568,195.46	603,128.83	32° 33' 42.715 N	104° 7' 57.958 W
12,100.0	90.00	269.87	8,950.0	-848.7	-2,828.4	568,195.22	603,028.83	32° 33' 42.714 N	104° 7' 59.127 W
12,200.0	90.00	269.87	8,950.0	-849.0	-2,928.4	568,194.99	602,928.83	32° 33' 42.714 N	104° 8' 0.295 W
12,300.0	90.00	269.87	8,950.0	-849.2	-3,028.4	568,194.75	602,828.83	32° 33' 42.713 N	104° 8' 1.464 W
12,400.0	90.00	269.87	8,950.0	-849.4	-3,128.4	568,194.52	602,728.83	32° 33' 42.713 N	104° 8' 2.633 W
12,500.0	90.00	269.87	8,950.0	-849.7	-3,228.4	568,194.28	602,628.83	32° 33' 42.712 N	104° 8' 3.801 W
12,600.0	90.00	269.87	8,950.0	-849.9	-3,328.4	568,194.05	602,528.83	32° 33' 42.712 N	104° 8' 4.970 W
12,700.0	90.00	269.87	8,950.0	-850.1	-3,428.4	568,193.82	602,428.84	32° 33' 42.712 N	104° 8' 6.138 W
12,800.0	90.00	269.87	8,950.0	-850.4	-3,528.4	568,193.58	602,328.84	32° 33' 42.711 N	104° 8' 7.307 W
12,900.0	90.00	269.87	8,950.0	-850.6	-3,628.4	568,193.35	602,228.84	32° 33' 42.711 N	104° 8' 8.475 W
13,000.0	90.00	269.87	8,950.0	-850.8	-3,728.4	568,193.11	602,128.84	32° 33' 42.710 N	104° 8' 9.644 W
13,100.0	90.00	269.87	8,950.0	-851.1	-3,828.4	568,192.88	602,028.84	32° 33' 42.710 N	104° 8' 10.812 W
13,200.0	90.00	269.87	8,950.0	-851.3	-3,928.4	568,192.64	601,928.84	32° 33' 42.709 N	104° 8' 11.981 W
13,300.0	90.00	269.87	8,950.0	-851.5	-4,028.4	568,192.41	601,828.84	32° 33' 42.709 N	104° 8' 13.149 W
13,400.0	90.00	269.87	8,950.0	-851.8	-4,128.4	568,192.18	601,728.84	32° 33' 42.708 N	104° 8' 14.318 W
13,500.0	90.00	269.87	8,950.0	-852.0	-4,228.4	568,191.94	601,628.84	32° 33' 42.708 N	104° 8' 15.486 W
13,600.0	90.00	269.87	8,950.0	-852.2	-4,328.4	568,191.71	601,528.84	32° 33' 42.707 N	104° 8' 16.655 W
13,700.0	90.00	269.87	8,950.0	-852.5	-4,428.4	568,191.47	601,428.84	32° 33' 42.707 N	104° 8' 17.823 W
13,800.0	90.00	269.87	8,950.0	-852.7	-4,528.4	568,191.24	601,328.84	32° 33' 42.706 N	104° 8' 18.992 W
13,900.0	90.00	269.87	8,950.0	-852.9	-4,628.4	568,191.00	601,228.84	32° 33' 42.706 N	104° 8' 20.160 W
14,000.0	90.00	269.87	8,950.0	-853.2	-4,728.4	568,190.77	601,128.84	32° 33' 42.705 N	104° 8' 21.329 W
14,100.0	90.00	269.87	8,950.0	-853.4	-4,828.4	568,190.53	601,028.84	32° 33' 42.705 N	104° 8' 22.497 W
14,127.0	90.00	269.87	8,950.0	-853.5	-4,855.4	568,190.47	601,001.87	32° 33' 42.704 N	104° 8' 22.812 W
NMLC 0067684 Entry at 14127.0 MD									
14,200.0	90.00	269.87	8,950.0	-853.7	-4,928.4	568,190.30	600,928.84	32° 33' 42.704 N	104° 8' 23.666 W
14,300.0	90.00	269.87	8,950.0	-853.9	-5,028.4	568,190.07	600,828.84	32° 33' 42.704 N	104° 8' 24.834 W
14,400.0	90.00	269.87	8,950.0	-854.1	-5,128.4	568,189.83	600,728.84	32° 33' 42.703 N	104° 8' 26.003 W
14,500.0	90.00	269.87	8,950.0	-854.4	-5,228.4	568,189.60	600,628.84	32° 33' 42.702 N	104° 8' 27.171 W
14,600.0	90.00	269.87	8,950.0	-854.6	-5,328.4	568,189.36	600,528.84	32° 33' 42.702 N	104° 8' 28.340 W
14,700.0	90.00	269.87	8,950.0	-854.8	-5,428.4	568,189.13	600,428.84	32° 33' 42.701 N	104° 8' 29.508 W
14,800.0	90.00	269.87	8,950.0	-855.1	-5,528.4	568,188.89	600,328.84	32° 33' 42.701 N	104° 8' 30.677 W
14,900.0	90.00	269.87	8,950.0	-855.3	-5,628.4	568,188.66	600,228.84	32° 33' 42.700 N	104° 8' 31.845 W
15,000.0	90.00	269.87	8,950.0	-855.5	-5,728.4	568,188.43	600,128.84	32° 33' 42.700 N	104° 8' 33.014 W
15,100.0	90.00	269.87	8,950.0	-855.8	-5,828.4	568,188.19	600,028.84	32° 33' 42.699 N	104° 8' 34.182 W

Permian Resources

Planning Report - Geographic

Database:	Compass	Local Co-ordinate Reference:	Well BONDI 24 FED COM 132H
Company:	NEW MEXICO	TVD Reference:	KB @ 3277.4usft
Project:	(SP) EDDY	MD Reference:	KB @ 3277.4usft
Site:	BONDI 24 FED COM PROJECT	North Reference:	Grid
Well:	BONDI 24 FED COM 132H	Survey Calculation Method:	Minimum Curvature
Wellbore:	OWB		
Design:	PWP0		

Planned Survey

Measured Depth (usft)	Inclination (°)	Azimuth (°)	Vertical Depth (usft)	+N/-S (usft)	+E/-W (usft)	Map Northing (usft)	Map Easting (usft)	Latitude	Longitude
15,200.0	90.00	269.87	8,950.0	-856.0	-5,928.4	568,187.96	599,928.84	32° 33' 42.699 N	104° 8' 35.351 W
15,300.0	90.00	269.87	8,950.0	-856.2	-6,028.4	568,187.72	599,828.84	32° 33' 42.698 N	104° 8' 36.519 W
15,400.0	90.00	269.87	8,950.0	-856.5	-6,128.4	568,187.49	599,728.84	32° 33' 42.698 N	104° 8' 37.688 W
15,500.0	90.00	269.87	8,950.0	-856.7	-6,228.4	568,187.25	599,628.84	32° 33' 42.697 N	104° 8' 38.856 W
15,600.0	90.00	269.87	8,950.0	-856.9	-6,328.4	568,187.02	599,528.84	32° 33' 42.696 N	104° 8' 40.025 W
15,700.0	90.00	269.87	8,950.0	-857.2	-6,428.4	568,186.78	599,428.84	32° 33' 42.696 N	104° 8' 41.193 W
15,800.0	90.00	269.87	8,950.0	-857.4	-6,528.4	568,186.55	599,328.84	32° 33' 42.695 N	104° 8' 42.362 W
15,900.0	90.00	269.87	8,950.0	-857.6	-6,628.4	568,186.32	599,228.84	32° 33' 42.695 N	104° 8' 43.530 W
16,000.0	90.00	269.87	8,950.0	-857.9	-6,728.4	568,186.08	599,128.84	32° 33' 42.694 N	104° 8' 44.699 W
16,100.0	90.00	269.87	8,950.0	-858.1	-6,828.4	568,185.85	599,028.84	32° 33' 42.694 N	104° 8' 45.867 W
16,200.0	90.00	269.87	8,950.0	-858.3	-6,928.4	568,185.61	598,928.84	32° 33' 42.693 N	104° 8' 47.036 W
16,300.0	90.00	269.87	8,950.0	-858.6	-7,028.4	568,185.38	598,828.84	32° 33' 42.692 N	104° 8' 48.204 W
16,400.0	90.00	269.87	8,950.0	-858.8	-7,128.4	568,185.14	598,728.85	32° 33' 42.692 N	104° 8' 49.373 W
16,500.0	90.00	269.87	8,950.0	-859.0	-7,228.4	568,184.91	598,628.85	32° 33' 42.691 N	104° 8' 50.542 W
16,600.0	90.00	269.87	8,950.0	-859.3	-7,328.4	568,184.68	598,528.85	32° 33' 42.691 N	104° 8' 51.710 W
16,700.0	90.00	269.87	8,950.0	-859.5	-7,428.4	568,184.44	598,428.85	32° 33' 42.690 N	104° 8' 52.879 W
16,783.0	90.00	269.87	8,950.0	-859.7	-7,511.4	568,184.25	598,345.88	32° 33' 42.690 N	104° 8' 53.848 W
NMLC 0067684 Exit at 16783.0 MD									
16,800.0	90.00	269.87	8,950.0	-859.7	-7,528.4	568,184.21	598,328.85	32° 33' 42.689 N	104° 8' 54.047 W
16,900.0	90.00	269.87	8,950.0	-860.0	-7,628.4	568,183.97	598,228.85	32° 33' 42.689 N	104° 8' 55.216 W
17,000.0	90.00	269.87	8,950.0	-860.2	-7,728.4	568,183.74	598,128.85	32° 33' 42.688 N	104° 8' 56.384 W
17,100.0	90.00	269.87	8,950.0	-860.4	-7,828.4	568,183.50	598,028.85	32° 33' 42.688 N	104° 8' 57.553 W
17,200.0	90.00	269.87	8,950.0	-860.7	-7,928.4	568,183.27	597,928.85	32° 33' 42.687 N	104° 8' 58.721 W
17,300.0	90.00	269.87	8,950.0	-860.9	-8,028.4	568,183.03	597,828.85	32° 33' 42.686 N	104° 8' 59.890 W
17,400.0	90.00	269.87	8,950.0	-861.2	-8,128.4	568,182.80	597,728.85	32° 33' 42.686 N	104° 9' 1.058 W
17,500.0	90.00	269.87	8,950.0	-861.4	-8,228.4	568,182.57	597,628.85	32° 33' 42.685 N	104° 9' 2.227 W
17,600.0	90.00	269.87	8,950.0	-861.6	-8,328.4	568,182.33	597,528.85	32° 33' 42.685 N	104° 9' 3.395 W
17,700.0	90.00	269.87	8,950.0	-861.9	-8,428.4	568,182.10	597,428.85	32° 33' 42.684 N	104° 9' 4.564 W
17,800.0	90.00	269.87	8,950.0	-862.1	-8,528.4	568,181.86	597,328.85	32° 33' 42.683 N	104° 9' 5.732 W
17,900.0	90.00	269.87	8,950.0	-862.3	-8,628.4	568,181.63	597,228.85	32° 33' 42.683 N	104° 9' 6.901 W
18,000.0	90.00	269.87	8,950.0	-862.6	-8,728.4	568,181.39	597,128.85	32° 33' 42.682 N	104° 9' 8.069 W
18,100.0	90.00	269.87	8,950.0	-862.8	-8,828.4	568,181.16	597,028.85	32° 33' 42.681 N	104° 9' 9.238 W
18,109.0	90.00	269.87	8,950.0	-862.8	-8,837.3	568,181.14	597,019.89	32° 33' 42.681 N	104° 9' 9.342 W
NMMN 008941 Exit at 18109.0 MD									
18,200.0	90.00	269.87	8,950.0	-863.0	-8,928.4	568,180.93	596,928.85	32° 33' 42.681 N	104° 9' 10.406 W
18,300.0	90.00	269.87	8,950.0	-863.3	-9,028.4	568,180.69	596,828.85	32° 33' 42.680 N	104° 9' 11.575 W
18,400.0	90.00	269.87	8,950.0	-863.5	-9,128.4	568,180.46	596,728.85	32° 33' 42.679 N	104° 9' 12.743 W
18,500.0	90.00	269.87	8,950.0	-863.7	-9,228.4	568,180.22	596,628.85	32° 33' 42.679 N	104° 9' 13.912 W
18,600.0	90.00	269.87	8,950.0	-864.0	-9,328.4	568,179.99	596,528.85	32° 33' 42.678 N	104° 9' 15.080 W
18,700.0	90.00	269.87	8,950.0	-864.2	-9,428.4	568,179.75	596,428.85	32° 33' 42.678 N	104° 9' 16.249 W
18,800.0	90.00	269.87	8,950.0	-864.4	-9,528.4	568,179.52	596,328.85	32° 33' 42.677 N	104° 9' 17.417 W
18,900.0	90.00	269.87	8,950.0	-864.7	-9,628.4	568,179.28	596,228.85	32° 33' 42.676 N	104° 9' 18.586 W
19,000.0	90.00	269.87	8,950.0	-864.9	-9,728.4	568,179.05	596,128.85	32° 33' 42.676 N	104° 9' 19.754 W
19,100.0	90.00	269.87	8,950.0	-865.1	-9,828.4	568,178.82	596,028.85	32° 33' 42.675 N	104° 9' 20.923 W
19,200.0	90.00	269.87	8,950.0	-865.4	-9,928.4	568,178.58	595,928.85	32° 33' 42.674 N	104° 9' 22.091 W
19,300.0	90.00	269.87	8,950.0	-865.6	-10,028.4	568,178.35	595,828.85	32° 33' 42.674 N	104° 9' 23.260 W
19,400.0	90.00	269.87	8,950.0	-865.8	-10,128.4	568,178.11	595,728.85	32° 33' 42.673 N	104° 9' 24.428 W
19,425.6	90.00	269.87	8,950.0	-865.9	-10,154.0	568,178.05	595,703.21	32° 33' 42.673 N	104° 9' 24.728 W
TD at 19425.6									

Permian Resources

Planning Report - Geographic

Database:	Compass	Local Co-ordinate Reference:	Well BONDI 24 FED COM 132H
Company:	NEW MEXICO	TVD Reference:	KB @ 3277.4usft
Project:	(SP) EDDY	MD Reference:	KB @ 3277.4usft
Site:	BONDI 24 FED COM PROJECT	North Reference:	Grid
Well:	BONDI 24 FED COM 132H	Survey Calculation Method:	Minimum Curvature
Wellbore:	OWB		
Design:	PWP0		

Design Targets

Target Name	Dip Angle (°)	Dip Dir. (°)	TVD (usft)	+N/-S (usft)	+E/-W (usft)	Northing (usft)	Easting (usft)	Latitude	Longitude
- hit/miss target									
- Shape									
BHL-BONDI 24 FC 13	0.00	0.00	8,950.0	-865.9	-10,154.0	568,178.05	595,703.21	32° 33' 42.673 N	104° 9' 24.728 W
- plan hits target center									
- Point									
LTP-BONDI 24 FC 13	0.00	0.00	8,958.0	-865.7	-10,064.0	568,178.28	595,793.19	32° 33' 42.673 N	104° 9' 23.677 W
- plan misses target center by 8.0usft at 19335.7usft MD (8950.0 TVD, -865.7 N, -10064.0 E)									
- Point									
FTP-BONDI 24 FC 13	0.00	0.00	8,958.0	-841.1	381.6	568,202.86	606,238.81	32° 33' 42.729 N	104° 7' 21.618 W
- plan misses target center by 169.4usft at 8975.0usft MD (8832.3 TVD, -841.5 N, 268.0 E)									
- Point									

Formations

Measured Depth (usft)	Vertical Depth (usft)	Name	Lithology	Dip (°)	Dip Direction (°)
0.0	0.0	Queen (TVD)			
0.0	0.0	Grayburg (TVD)			
125.0	125.0	Rustler (TVD)			
327.0	327.0	Salado = T/Salt (TVD)			
841.0	841.0	Tansill (TVD)			
940.0	940.0	Yates (TVD)			
1,238.0	1,238.0	Seven Rivers (TVD)			
1,328.0	1,328.0	Capitan (if applicable) (TVD)			
2,776.2	2,768.0	San Andres (TVD)			
3,195.4	3,178.0	Delaware Sands = CYCN (TVD)			
3,993.8	3,959.0	BYCN			
5,508.9	5,441.0	Bone Spring = BSG (TVD)			
6,897.6	6,803.0	FBSG (TVD)			
7,433.0	7,338.0	SBSG (TVD)			
8,837.1	8,728.0	TBSG (TVD)			

Plan Annotations

Measured Depth (usft)	Vertical Depth (usft)	Local Coordinates		Comment
		+N/-S (usft)	+E/-W (usft)	
2,000.0	2,000.0	0.0	0.0	Start Build 2.00
2,600.0	2,595.6	-55.7	28.6	Start 3944.7 hold at 2600.0 MD
6,544.7	6,454.2	-785.4	403.0	Start Drop -2.00
7,144.7	7,049.8	-841.1	431.6	Start 1422.7 hold at 7144.7 MD
8,567.5	8,472.5	-841.1	431.6	Start DLS 12.00 TFO 269.87
9,317.5	8,950.0	-842.2	-45.9	Start 10108.2 hold at 9317.5 MD
11,459.0	8,950.0	-847.2	-2,187.4	NMNM 100255 Exit at 11459.0 MD
14,127.0	8,950.0	-853.5	-4,855.4	NMLC 0067684 Entry at 14127.0 MD
16,783.0	8,950.0	-859.7	-7,511.4	NMLC 0067684 Exit at 16783.0 MD
18,109.0	8,950.0	-862.8	-8,837.3	NMNM 008941 Exit at 18109.0 MD
19,425.6	8,950.0	-865.9	-10,154.0	TD at 19425.6

PERMIAN

R E S O U R C E S

H₂S CONTINGENCY PLAN

FOR

Colgate Operating LLC
Bondi 24 Fed Com 131H, 132H, 201H, 202H
Eddy County, New Mexico

02-15-2024

This plan is subject to updating

Colgate Operating LLC	H ₂ S Contingency Plan Bondi 24 Fed Com 131H, 132H, 201H, 202H	Eddy County, New Mexico
-----------------------	---	-------------------------

Section 1.0 – Introduction

I. Purpose

The purpose of this contingency plan (Plan) is to provide Colgate Operatings LLC. (Colgate Operating LLC) with an organized plan of action for alerting and protecting Colgate Operating LLC employees, the general public, and any potential first responders prior to any intentional release or immediately following the accidental / unintentional release of a potentially hazardous volume / concentration of Hydrogen Sulfide Gas (H₂S).

II. Scope & Applicability

This Plan applies to all planned, unplanned, uncontrolled and/or unauthorized releases of hazardous concentrations of H₂S or any associated hazardous byproducts of combustion, occurring at any Colgate Operating owned or operated facilities including but not limited to: wells, flowlines, pipelines, tank batteries, production facilities, SWD facilities, compressor stations, gas processing plants, drilling / completions / workover operations, and any other applicable company owned property.

Section 2.0 - Plan Implementation

I. Activation Requirements

In accordance with the requirements of Bureau of Land Management Onshore Order #6 and NMAC 19.15.11, this Plan shall be activated in advance of any authorized, planned, unplanned, uncontrolled, or unauthorized release of a hazardous volume / concentration of H₂S gas, or SO₂, which could potentially adversely impact the workers, general public or the environment.

II. Emergency Evacuation

In the event of an unplanned, uncontrolled, or unauthorized release of a hazardous volume / concentration of H₂S gas, the first priority is to ensure the safety of the workers and general public. Upon discovery and subsequent determination of an applicable release, which cannot be quickly mitigated, immediately by using 911, notify local authorities to begin the process of alerting the general public, evacuate any residents within the Radius of Exposure (ROE), and limit any general public or employee access to any areas within the ROE of the affected facility.

III. Emergency Response Activities

The purpose of emergency response actions is to take steps to quickly mitigate / stop the ongoing release of the hazardous source of H₂S. Upon discovery of any hazardous release, immediately notify Colgate Operating management to activate the Emergency Response Team (ERT). Once Colgate Operating supervision arrives and assesses the situation, a work plan identifying the proper procedures shall be developed to stop the release.

Section 3.0 - Potential Hazardous Conditions & Response Actions

During a planned or unplanned release of H₂S, there are several hazardous conditions that are presented

Colgate Operating LLC	H ₂ S Contingency Plan Bondi 24 Fed Com 131H, 132H, 201H, 202H	Eddy County, New Mexico
-----------------------	---	-------------------------

H₂S CONDITION 3: EXTREME DANGER TO LIFE AND HEALTH → WARNING SIGN RED	
> 30 ppm H ₂ S concentration in air detected by location monitors: Extreme danger to life	<input type="checkbox"/>
General Actions During Condition 3	<input type="checkbox"/>
Sound H ₂ S alarm and/or display red flag.	<input type="checkbox"/>
Account for on-site personnel	<input type="checkbox"/>
Move away from H ₂ S source and get out of the affected area.	<input type="checkbox"/>
Proceed to designated safe briefing area; alert other affected personnel.	<input type="checkbox"/>
Account for personnel at safe briefing area.	<input type="checkbox"/>
If trained and safe to do so undertake measures to control source H ₂ S discharge and eliminate possible ignition sources. Initiate Emergency Shutdown procedures as deemed necessary to correct or control the specific situation.	<input type="checkbox"/>
Notify vehicles or situation and divert all traffic away from location.	<input type="checkbox"/>
Colgate Operating Peron-in-Charge will make appropriate community notifications.	<input type="checkbox"/>
Red warning flag must be on display until the situation has been corrected and the Colgate Operating Person-in-Charge determines it is safe to resume operations under Condition 1 .	<input type="checkbox"/>
Notify management of the condition and action taken. If H ₂ S concentration is increasing and steps to correct the situation are not successful – or at any time if well control is questionable – alert all responsible parties for possible activation of the H ₂ S Contingency Plan. If well control at the surface is lost, determine if situation warrants igniting the well.	<input type="checkbox"/>
If uncontrolled flow at the surface occurs, the Colgate Operating PIC, with approval, if possible, from those coordinating the emergency (as specified in the site-specific H₂S Contingency Plan) are responsible for determining if the situation warrants igniting the flow of the uncontrolled well. This decision should be made only as a last resort and in a situation where it is obvious that human life is in danger and there is no hope of controlling the flow under prevailing conditions.	<input type="checkbox"/>
If the flow is ignited, burning H ₂ S will be converted to sulfur dioxide (SO ₂), which is also highly toxic. Do not assume that area is safe after the flow is ignited. If the well is ignited, evacuation of the area is mandatory, because SO ₂ will remain in low-lying places under no-wind conditions.	<input type="checkbox"/>
Keep Site Supervisor / Colgate Operating PIC informed. Notify applicable government agencies and local law enforcement (Appendix A) If off-site impact; notify any neighbors within the Radius of Exposure (ROE), see example in Figure 5-11 .	<input type="checkbox"/>
Continuously monitor H ₂ S until readings fall below 10 ppm.	<input type="checkbox"/>
Evacuated area shall not be re-entered except by trained and authorized personnel utilizing appropriate respiratory protection; or until "all clear" sounded by Colgate Operating PIC / Site Supervisor.	<input type="checkbox"/>
IF ABOVE ACTIONS CANNOT BE ACCOMPLISHED IN TIME TO PREVENT EXPOSURE TO THE PUBLIC	

Colgate Operating LLC	H ₂ S Contingency Plan Bondi 24 Fed Com 131H, 132H, 201H, 202H	Eddy County, New Mexico
-----------------------	---	-------------------------

Section 5.0 - Emergency Contact List

EMERGENCY CONTACT LIST				
Colgate Operating LLC				
POSITION	NAME	OFFICE	CELL	ALT PHONE
Operations				
Operations Superintendent	Rick Lawson		432.530.3188	
TX Operations Superintendent	Josh Graham	432.940.3191	432.940.3191	
NM Operations Superintendent	Manual Mata	432.664.0278	575.408.0216	
Drilling Manager	Jason Fitzgerald	432.315.0146	318.347.3916	
Drilling Engineer	Parker Simmons	432.400.1038	281.536.9813	
Production Manager	Levi Harris	432.219.8568	720.261.4633	
SVP Development Ops	Clayton Smith	720.499.1416	361.215.2494	
SVP Production Ops	Casey McCain	432.695.4239	432.664.6140	
HSE & Regulatory				
H&S Manager	Adam Hicks	720.499.2377	903.426.4556	
Regulatory Manager	Stephanie Rabadue		432.260.4388	
Environmental Manager	Montgomery Floyd	432-315-0123	432-425-8321	
HSE Consultant	Blake Wisdom		918-323-2343	
Local, State, & Federal Agencies				
Eddy County Sheriff		575-887-7551		911
New Mexico State Highway Patrol		505-757-2297		911
Carlsbad Fire / EMS		575-885-3125		911
Carlsbad Memorial Hospital		575-887-4100		
Secorp – Safety Contractor	Ricky Stephens		(325)-262-0707	
New Mexico Oil Conservation Division – District 1 Office – Hobbs, NM.		575-393-6161		
New Mexico Environment Department – District III Office – Hobbs, NM		575-397-6910		
New Mexico Oil Conservation Division – Hobbs, NM	24 Hour Emergency	575-393-6161		
Bureau of Land Management – Carlsbad, NM		575-234-5972		
U.S. Fish & Wildlife		502-248-6911		

Section 6.0 – Drilling Location Information

I. Site Safety Information

1. Safe Briefing Area

- There shall be two areas that will be designated as "SAFE BRIEFING AREAs". If H₂S is detected in concentrations equal to or in excess of 10 ppm all personnel not assigned

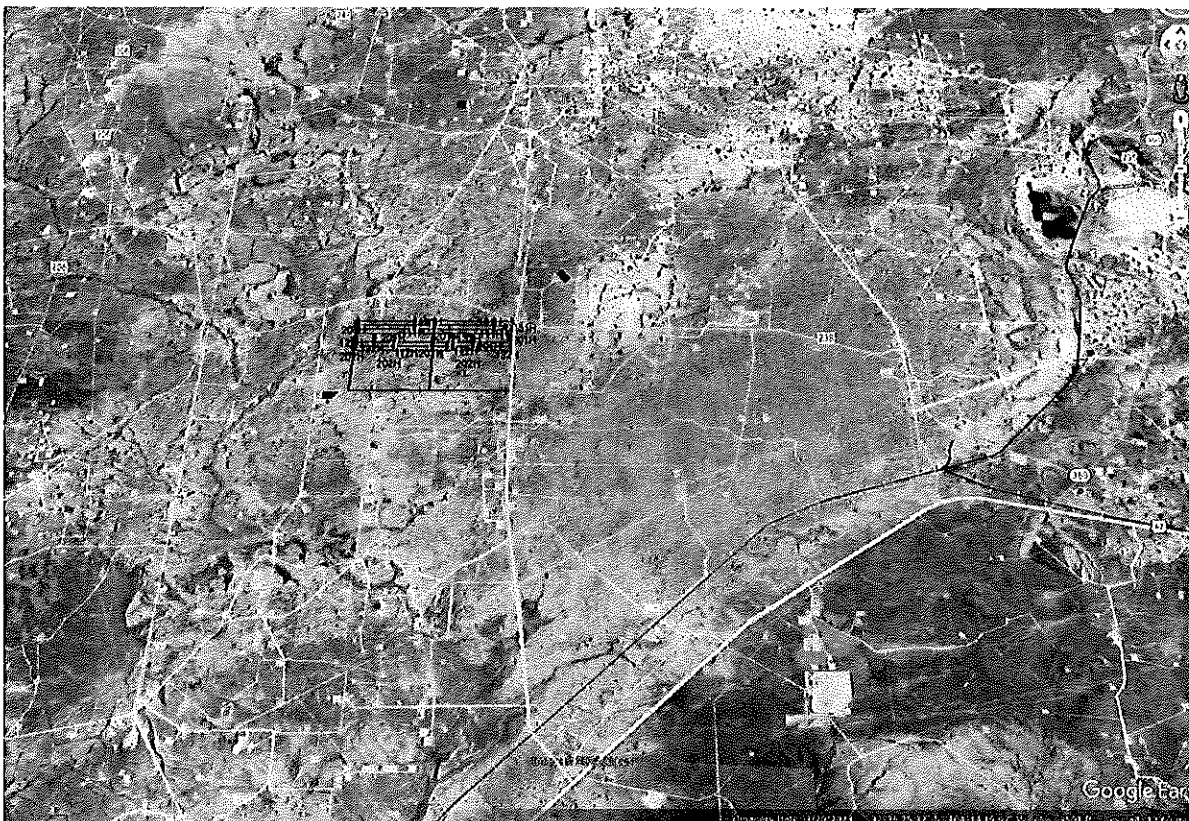
Colgate Operating LLC	H ₂ S Contingency Plan Bondi 24 Fed Com 131H, 132H, 201H, 202H	Eddy County, New Mexico
-----------------------	---	-------------------------

II. Directions to Location

BEGINNING AT THE INTERSECTION OF U.S. HIGHWAY 285 AND U.S. HIGHWAY 62 IN CARLSBAD, NEW MEXICO, PROCEED IN A EASTERLY DIRECTION ALONG U.S. HIGHWAY 62 APPROXIMATELY 8.6 MILES TO THE JUNCTION OF THIS ROAD AND COUNTY ROAD 243 (MAGNUM ROAD) TO THE NORTH; TURN LEFT AND PROCEED IN A NORTHERLY DIRECTION APPROXIMATELY 5.6 MILES TO THE BEGINNING OF THE PROPOSED ACCESS ROAD "A" TO THE WEST; FOLLOW ROAD FLAGS IN A WESTERLY DIRECTION APPROXIMATELY 200' TO THE PROPOSED LOCATION. TOTAL DISTANCE FROM CARLSBAD, NEW MEXICO TO THE PROPOSED WELL LOCATION IS APPROXIMATELY 14.2 MILES.

Colgate Operating LLC	H ₂ S Contingency Plan Bondi 24 Fed Com 131H, 132H, 201H, 202H	Eddy County, New Mexico
-----------------------	---	-------------------------

1. Routes of Ingress & Egress (MAP)



2. Residences in proximity to the 3000' Radius of Exposure (ROE) (MAP)

There are no residences or public gathering places with the 3000' ROE, 100 PPM, 300 PPM, or 500 PPM ROE.

Colgate Operating LLC	H ₂ S Contingency Plan Bondi 24 Fed Com 131H, 132H, 201H, 202H	Eddy County, New Mexico
-----------------------	---	-------------------------

Section 7.0 – Hazard Communication

I. Physical Characteristics of Hydrogen Sulfide Gas

Hydrogen sulfide (H₂S) is a colorless, poisonous gas that is soluble in water. It can be present in crude oils, condensates, natural gas and wastewater streams.

H₂S is heavier than air with a vapor density of 1.189 (air = 1.0); however, H₂S is most often mixed with other gases. These mixtures of H₂S and other gases can be heavier or lighter than air. If the H₂S-containing mixture is heavier, it can collect in low areas such as ditches, ravines, firewalls, and pits; in storage tanks; and in areas of poor ventilation. Please see physical properties in Table 7.0.

With H₂S the sense of smell is rapidly lost allowing lethal concentrations to be accumulated without warning. The toxicity of hydrogen sulfide at varying concentrations is indicated in the Table 7.1.

Warning: Do not use the mouth-to-mouth method if a victim ingested or inhaled hydrogen sulfide. Give artificial respiration with the aid of a pocket mask equipped with a one-way valve or other proper respiratory medical device.

Table 7.0. Physical Properties of H₂S

Properties of H ₂ S	Description
Vapor Density > 1 = 1.189 Air = 1	<ul style="list-style-type: none">H₂S gas is slightly heavier than air, which can cause it to settle in low places and build in concentration.Produced as a mixture with other gases associated with oil and gas production.
Flammable Range 4.3%-46% 43000 ppm – 460000 ppm	<ul style="list-style-type: none">H₂S can be extremely flammable / explosive when these concentrations are reached by volume in air.

Although H₂S is primarily a respiratory hazard, it is also flammable and forms an explosive mixture at concentrations of 4.3%–46.0% (40,000ppm – 460,000 ppm) by volume in air.

H₂S can be encountered when:

- Venting and draining equipment.
- Opening equipment (separators, pumps, and tanks).
- Opening piping connections (“line breaking”).
- Gauging and sampling storage tanks.
- Entering confined spaces.
- Working around wastewater pits, skimmers, and treatment facilities.

II. Human Health Hazards - Toxicological Information

Table 7.1. Hazards & Toxicity

Colgate Operating LLC	H ₂ S Contingency Plan Bondi 24 Fed Com 131H, 132H, 201H, 202H	Eddy County, New Mexico
-----------------------	---	-------------------------

elevated temperatures. Since Sulfur Dioxide is extremely irritating to the eyes and mucous membranes of the upper respiratory tract, it has exceptionally good warning powers in this respect. The following table indicates the toxic nature of the gas. Please see the attached SDS in Appendix B for reference.

SULFUR DIOXIDE TOXICITY		
Concentration		Effects
%SO ₂	PPM	
0.0005	3 to 5	Pungent odor-normally a person can detect SO ₂ in this range.
0.0012	12	Throat irritation, coughing, and constriction of the chest tearing and smarting of eyes.
0.15	150	So irritating that it can only be endured for a few minutes.
0.05	500	Causes a sense of suffocation, even with first breath.

Section 8.0 - Regulatory Information

I. OSHA & NIOSH Information

II. Table 8.0. OSHA & NIOSH H₂S Information

PEL, IDLH, TLV	Description
NIOSH PEL 10 PPM	<ul style="list-style-type: none"> PEL is the Permissible Exposure Limit that an employee may be exposed up to 8 hr / day.
OSHA General Industry Ceiling PEL – 20 PPM	<ul style="list-style-type: none"> The maximum exposure limit, which cannot be exceeded for any length of time.
IDLH 100 PPM	<ul style="list-style-type: none"> Immediately Dangerous to Life and Health
Colgate Operating PEL 10 PPM	<ul style="list-style-type: none"> Colgate Operating Policy Regarding H₂S for employee safety

III. New Mexico OCD & BLM – H₂S Concentration Threshold Requirements

New Mexico NMAC 19.15.11 and Onshore Order #6 identify two Radii of Exposure (ROE) that identify potential danger to the public and require additional compliance measures. Colgate Operating is required to install safety devices, establish safety procedures and develop a written H₂S contingency plan for sites where the H₂S concentrations are as follows.

Table 8.1. Calculating H₂S Radius of Exposure

H ₂ S Radius of Exposure	Description	Control and Equipment Requirements
100 ppm	Distance from a release to where the H ₂ S concentration in the air will dilute below 100ppm	ROE > 50-ft and includes any part of a "public area" (residence, school, business, etc., or any area that can be expected to be populated). ROE > 3,000-ft

Colgate Operating LLC	H ₂ S Contingency Plan Bondi 24 Fed Com 131H, 132H, 201H, 202H	Eddy County, New Mexico
-----------------------	---	-------------------------

- **CASE 2** - 100 ppm ROE is 50' or greater, but < 3000' and does not penetrate public area.
- **CASE 3** - 100 ppm ROE is 50' or greater and penetrates a public area or 500 ppm ROE includes a public road. Also if 100 ppm ROE > 3000' regardless of public area.

Table 8.3. NMAC 19.15.11 Compliance Requirements Drilling & Production

NMAC 19.15.11 & BLM COMPLIANCE REQUIREMENTS - DRILLING & PRODUCTION			
PROVISION	CASE 1	CASE 2	CASE 3
H ₂ S Concentration Test	X	X	X
H-9	X	X	X
Training	X	X	X
District Office Notification	X	X	X
Drill Stem Tests Restricted	X*	X*	X
BOP Test	X*	X*	X
Materials		X	X
Warning and Marker		X	X
Security		X	X
Contingency Plan			X
Control and Equipment Safety			X
Monitors		X**	X**
Mud (ph Control or Scavenger)			X*
Wind Indicators		X**	X
Protective Breathing Equipment		X**	X
Choke Manifold, Secondary Remote Control, and Mud-Gas Separator			X
Flare Stacks			X*

Section 9.0 - Training Requirements**Training**

The following elements are considered a minimum level of training for personnel assigned to operations who may encounter H₂S as part of routine or maintenance work.

- The hazards, characteristics, and properties of hydrogen sulfide (H₂S) and (SO₂).
- Sources of H₂S and SO₂.
- Proper use of H₂S and SO₂ detection methods used at the workplace.
- Recognition of, and proper response to, the warning signals initiated by H₂S and SO₂ detection systems in use at the workplace.
- Symptoms of H₂S exposure; symptoms of SO₂ exposure
- Rescue techniques and first aid to victims of H₂S and SO₂ exposure.
- Proper use and maintenance of breathing equipment for working in H₂S and SO₂ atmospheres, as appropriate theory and hands-on practice, with demonstrated proficiency (29 CFR Part 1910.134).
- Workplace practices and relevant maintenance procedures that have been established to protect personnel from the hazards of H₂S and SO₂.
- Wind direction awareness and routes of egress.

Colgate Operating LLC	H ₂ S Contingency Plan Bondi 24 Fed Com 131H, 132H, 201H, 202H	Eddy County, New Mexico
-----------------------	---	-------------------------

- Gas masks or other air-purifying respirators MUST NEVER BE USED FOR HYDROGEN SULFIDE due to the poor warning properties of the gas.
- Use of respiratory protection should be accompanied by a written respiratory protection program.

Appendix A
H₂S SDS

Colgate Operating LLC	H ₂ S Contingency Plan Bondi 24 Fed Com 131H, 132H, 201H, 202H	Eddy County, New Mexico
-----------------------	---	-------------------------



Hydrogen sulfide

Safety Data Sheet E-4611

according to the Hazardous Products Regulation (February 11, 2015)

Date of issue: 10-15-1979

Revision date: 08-10-2016

Supersedes: 10-15-2013

Do not breathe gas
Use and store only outdoors or in a well-ventilated area
Avoid release to the environment
Wear protective gloves, protective clothing, eye protection, respiratory protection, and/or face protection
Leaking gas fire: Do not extinguish, unless leak can be stopped safely
In case of leakage, eliminate all ignition sources
Store locked up
Dispose of contents/container in accordance with container Supplier/owner instructions
Protect from sunlight when ambient temperature exceeds 52°C (125°F)
Close valve after each use and when empty
Do not open valve until connected to equipment prepared for use
When returning cylinder, install leak tight valve outlet cap or plug
Do not depend on odour to detect the presence of gas

2.3. Other hazards

Other hazards not contributing to the classification : Contact with liquid may cause cold burns/frostbite.

2.4. Unknown acute toxicity (GHS-GA)

No data available

SECTION 3: Composition/information on ingredients

3.1. Substances

Name	CAS No.	% (Vol.)	Common Name (synonyms)
Hydrogen sulfide (Main constituent)	(CAS No) 7783-06-4	100	Hydrogen sulfide (H ₂ S) / Hydrogen sulphide / Sulfur hydride / Sulfureted hydrogen / Dihydrogen sulphide / Hydrogensulfide

3.2. Mixtures

Not applicable

SECTION 4: First-aid measures

4.1. Description of first aid measures

First-aid measures after Inhalation : Remove to fresh air and keep at rest in a position comfortable for breathing. If not breathing, give artificial respiration. If breathing is difficult, trained personnel should give oxygen. Call a physician.

First-aid measures after skin contact : The liquid may cause frostbite. For exposure to liquid, immediately warm frostbite area with warm water not to exceed 105°F (41°C). Water temperature should be tolerable to normal skin. Maintain skin warming for at least 15 minutes or until normal coloring and sensation have returned to the affected area. In case of massive exposure, remove clothing while showering with warm water. Seek medical evaluation and treatment as soon as possible.

First-aid measures after eye contact : Immediately flush eyes thoroughly with water for at least 15 minutes. Hold the eyelids open and away from the eyeballs to ensure that all surfaces are flushed thoroughly. Contact an ophthalmologist immediately.

First-aid measures after Ingestion : Ingestion is not considered a potential route of exposure.

4.2. Most important symptoms and effects (acute and delayed)

No additional information available

4.3. Immediate medical attention and special treatment, if necessary

Other medical advice or treatment : Obtain medical assistance. Treat with corticosteroid spray as soon as possible after inhalation.

SECTION 5: Fire-fighting measures

5.1. Suitable extinguishing media

Suitable extinguishing media : Carbon dioxide, Dry chemical, Water spray or fog. Use extinguishing media appropriate for surrounding fire.

5.2. Unsuitable extinguishing media

No additional information available

This document is only controlled while on the Praxair Canada Inc. website and a copy of this controlled version is available for download. Praxair cannot assure the integrity or accuracy of any version of this document after it has been downloaded or removed from our website.

EN (English)

SDS ID : E-4611

2/9

Colgate Operating LLC	H ₂ S Contingency Plan Bondi 24 Fed Com 131H, 132H, 201H, 202H	Eddy County, New Mexico
-----------------------	---	-------------------------



Hydrogen sulfide

Safety Data Sheet E-4611

according to the Hazardous Products Regulation (February 11, 2015)

Date of Issue: 10-15-1979

Revision date: 08-10-2016

Supersedes: 10-15-2013

7.2. Conditions for safe storage, including any incompatibilities

Storage conditions

Store only where temperature will not exceed 125°F (52°C). Post "No Smoking/No Open Flames" signs in storage and use areas. There must be no sources of ignition. Separate packages and protect against potential fire and/or explosion damage following appropriate codes and requirements (e.g. NFPA 30, NFPA 55, NFPA 70, and/or NFPA 221 in the U.S.) or according to requirements determined by the Authority Having Jurisdiction (AHJ). Always secure containers upright to keep them from falling or being knocked over. Install valve protection cap, if provided, firmly in place by hand when the container is not in use. Store full and empty containers separately. Use a first-in, first-out inventory system to prevent storing full containers for long periods. For other precautions in using this product, see section 16

OTHER PRECAUTIONS FOR HANDLING, STORAGE, AND USE: When handling product under pressure, use piping and equipment adequately designed to withstand the pressures to be encountered. Never work on a pressurized system. Use a back flow preventive device in the piping. Gases can cause rapid suffocation because of oxygen deficiency; store and use with adequate ventilation. If a leak occurs, close the container valve and blow down the system in a safe and environmentally correct manner in compliance with all International, federal/national, state/provincial, and local laws; then repair the leak. Never place a container where it may become part of an electrical circuit.

SECTION 8: Exposure controls/personal protection

8.1. Control parameters

Hydrogen sulfide (7783-08-4)		
USA - ACGIH	ACGIH TLV-TWA (ppm)	1 ppm
USA - ACGIH	ACGIH TLV-STEL (ppm)	5 ppm
USA - OSHA	OSHA PEL (Ceiling) (ppm)	20 ppm
Canada (Quebec)	VECD (mg/m ³)	21 mg/m ³
Canada (Quebec)	VECD (ppm)	15 ppm
Canada (Quebec)	VEMP (mg/m ³)	14 mg/m ³
Canada (Quebec)	VEMP (ppm)	10 ppm
Alberta	OEL Ceiling (mg/m ³)	21 mg/m ³
Alberta	OEL Ceiling (ppm)	15 ppm
Alberta	OEL TWA (mg/m ³)	14 mg/m ³
Alberta	OEL TWA (ppm)	10 ppm
British Columbia	OEL Ceiling (ppm)	10 ppm
Manitoba	OEL STEL (ppm)	5 ppm
Manitoba	OEL TWA (ppm)	1 ppm
New Brunswick	OEL STEL (mg/m ³)	21 mg/m ³
New Brunswick	OEL STEL (ppm)	15 ppm
New Brunswick	OEL TWA (mg/m ³)	14 mg/m ³
New Brunswick	OEL TWA (ppm)	10 ppm
Newfoundland & Labrador	OEL STEL (ppm)	5 ppm
Newfoundland & Labrador	OEL TWA (ppm)	1 ppm
Nova Scotia	OEL STEL (ppm)	5 ppm
Nova Scotia	OEL TWA (ppm)	1 ppm
Nunavut	OEL Ceiling (mg/m ³)	28 mg/m ³
Nunavut	OEL Ceiling (ppm)	20 ppm
Nunavut	OEL STEL (mg/m ³)	21 mg/m ³
Nunavut	OEL STEL (ppm)	15 ppm
Nunavut	OEL TWA (mg/m ³)	14 mg/m ³
Nunavut	OEL TWA (ppm)	10 ppm
Northwest Territories	OEL STEL (ppm)	15 ppm

This document is only controlled while on the Praxair Canada Inc. website and a copy of this controlled version is available for download. Praxair cannot assure the integrity or accuracy of any version of this document after it has been downloaded or removed from our website.

EN (English)

SDS ID : E-4611

4/9

Colgate Operating LLC	H ₂ S Contingency Plan Bondi 24 Fed Com 131H, 132H, 201H, 202H	Eddy County, New Mexico
-----------------------	---	-------------------------



Hydrogen sulfide

Safety Data Sheet E-4611

according to the Hazardous Products Regulation (February 11, 2015)

Date of Issue: 10-15-1979

Revision date: 08-10-2016

Supersedes: 10-15-2013

pH	: Not applicable.
pH solution	: No data available
Relative evaporation rate (butylacetate=1)	: No data available
Relative evaporation rate (ether=1)	: Not applicable.
Melting point	: -86 °C
Freezing point	: -82.9 °C
Boiling point	: -60.3 °C
Flash point	: Not applicable.
Critical temperature	: 100.4 °C
Auto-ignition temperature	: 260 °C
Decomposition temperature	: No data available
Vapour pressure	: 1880 kPa
Vapour pressure at 50 °C	: No data available
Critical pressure	: 8940 kPa
Relative vapour density at 20 °C	: >=
Relative density	: No data available
Relative density of saturated gas/air mixture	: No data available
Density	: No data available
Relative gas density	: 1.2
Solubility	: Water; 3980 mg/l
Log Pow	: Not applicable.
Log Kow	: Not applicable.
Viscosity, kinematic	: Not applicable.
Viscosity, dynamic	: Not applicable.
Viscosity, kinematic (calculated value) (40 °C)	: No data available
Explosive properties	: Not applicable.
Oxidizing properties	: None.
Flammability (solid, gas)	: 4.3 - 46 vol %

9.2. Other information

Gas group	: Liquefied gas
Additional information	: Gas/vapour heavier than air. May accumulate in confined spaces, particularly at or below ground level

SECTION 10: Stability and reactivity

10.1. Reactivity

Reactivity	: No reactivity hazard other than the effects described in sub-sections below.
Chemical stability	: Stable under normal conditions.
Possibility of hazardous reactions	: May react violently with oxidants. Can form explosive mixture with air.
Conditions to avoid	: Avoid moisture in installation systems. Keep away from heat/sparks/open flames/hot surfaces. – No smoking.
Incompatible materials	: Ammonia, Bases, Bromine pentafluoride, Chlorine trifluoride, chromium trioxide, (and heat), Copper, (powdered), Fluorine, Lead, Lead oxide, Mercury, Nitric acid, Nitrogen trifluoride, nitrogen sulfide, Organic compounds, Oxidizing agents, Oxygen difluoride, Rubber, Sodium, (and moisture), Water.
Hazardous decomposition products	: Thermal decomposition may produce : Sulfur, Hydrogen.

SECTION 11: Toxicological information

11.1. Information on toxicological effects

Acute toxicity (oral)	: Not classified
Acute toxicity (dermal)	: Not classified

This document is only controlled while on the Praxair Canada Inc. website and a copy of this controlled version is available for download. Praxair cannot assure the integrity or accuracy of any version of this document after it has been downloaded or removed from our website.

EN (English)

SDS ID : E-4611

6/9

Colgate Operating LLC	H ₂ S Contingency Plan Bondi 24 Fed Com 131H, 132H, 201H, 202H	Eddy County, New Mexico
-----------------------	---	-------------------------



Hydrogen sulfide

Safety Data Sheet E-4611

according to the Hazardous Products Regulation (February 11, 2015)

Date of Issue: 10-15-1979

Revision date: 08-10-2016

Supersedes: 10-15-2013

SECTION 13: Disposal considerations

13.1. Disposal methods

Waste disposal recommendations : Do not attempt to dispose of residual or unused quantities. Return container to supplier.

SECTION 14: Transport information

14.1. Basic shipping description

In accordance with TDG

TDG

UN-No. (TDG) : UN1053
 TDG Primary Hazard Classes : 2.3 - Class 2.3 - Toxic Gas.
 TDG Subsidiary Classes : 2.1
 Proper shipping name : HYDROGEN SULPHIDE

ERAP Index : 600
 Explosive Limit and Limited Quantity Index : 0
 Passenger Carrying Ship Index : Forbidden
 Passenger Carrying Road Vehicle or Passenger : Forbidden
 Carrying Railway Vehicle Index

14.3. Air and sea transport

IMDG

UN-No. (IMDG) : 1053
 Proper Shipping Name (IMDG) : HYDROGEN SULPHIDE
 Class (IMDG) : 2 - Gases
 MFAG-No : 117

IATA

UN-No. (IATA) : 1053
 Proper Shipping Name (IATA) : Hydrogen sulphide
 Class (IATA) : 2

SECTION 15: Regulatory information

15.1. National regulations

Hydrogen sulfide (7783-06-4)

Listed on the Canadian DSL (Domestic Substances List)

15.2. International regulations

Hydrogen sulfide (7783-06-4)

Listed on the AICS (Australian Inventory of Chemical Substances)
 Listed on IECSC (Inventory of Existing Chemical Substances Produced or Imported in China)
 Listed on the EEC inventory EINECS (European Inventory of Existing Commercial Chemical Substances)
 Listed on the Japanese ENCS (Existing & New Chemical Substances) inventory
 Listed on the Korean ECL (Existing Chemicals List)
 Listed on NZIoC (New Zealand Inventory of Chemicals)
 Listed on PICCS (Philippines Inventory of Chemicals and Chemical Substances)
 Listed on the United States TSCA (Toxic Substances Control Act) Inventory
 Listed on INSQ (Mexican national Inventory of Chemical Substances)

SECTION 16: Other information

Date of issue : 15/10/1979
 Revision date : 10/08/2016
 Supersedes : 15/10/2013

Indication of changes:

Training advice : Users of breathing apparatus must be trained. Ensure operators understand the toxicity hazard.
 Ensure operators understand the flammability hazard.

This document is only controlled while on the Praxair Canada Inc. website and a copy of this controlled version is available for download. Praxair cannot assure the integrity or accuracy of any version of this document after it has been downloaded or removed from our website.

EN (English)

SDS ID : E-4611

8/9

Colgate Operating LLC	H ₂ S Contingency Plan Bondi 24 Fed Com 131H, 132H, 201H, 202H	Eddy County, New Mexico
-----------------------	---	-------------------------

Appendix B
SO₂ SDS



MATHESON

ask...The Gas Professionals™

Safety Data Sheet

Material Name: SULFUR DIOXIDE

SDS ID: MAT22290

Section 1 - PRODUCT AND COMPANY IDENTIFICATION

Material Name

SULFUR DIOXIDE

Synonyms

MTG MSDS 80; SULFUROUS ACID ANHYDRIDE; SULFUROUS OXIDE; SULPHUR DIOXIDE;
SULFUROUS ANHYDRIDE; FERMENTICIDE LIQUID; SULFUR DIOXIDE(SO₂); SULFUR OXIDE;
SULFUR OXIDE(SO₂)

Chemical Family

inorganic, gas

Product Description

Classification determined in accordance with Compressed Gas Association standards.

Product Use

Industrial and Specialty Gas Applications.

Restrictions on Use

None known.

Details of the supplier of the safety data sheet

MATHESON TRI-GAS, INC.

3 Mountainview Road

Warren, NJ 07059

General Information: 1-800-416-2505

Emergency #: 1-800-424-9300 (CHEMTREC)

Outside the US: 703-527-3887 (Call collect)

Section 2 - HAZARDS IDENTIFICATION

Classification in accordance with paragraph (d) of 29 CFR 1910.1200.

Gases Under Pressure - Liquefied gas

Acute Toxicity - Inhalation - Gas - Category 3

Skin Corrosion/Irritation - Category 1B

Serious Eye Damage/Eye Irritation - Category 1

Simple Asphyxiant

GHS Label Elements

Symbol(s)



Signal Word

Danger

Hazard Statement(s)

Contains gas under pressure; may explode if heated.

Toxic if inhaled.

Causes severe skin burns and eye damage.

May displace oxygen and cause rapid suffocation.

Precautionary Statement(s)

Prevention

Use only outdoors or in a well-ventilated area.

Wear protective gloves/protective clothing/eye protection/face protection.

Colgate Operating LLC	H ₂ S Contingency Plan Bondi 24 Fed Com 131H, 132H, 201H, 202H	Eddy County, New Mexico
-----------------------	---	-------------------------

**MATHESON**

ask...The Gas Professionals™

Safety Data Sheet**Material Name: SULFUR DIOXIDE****SDS ID: MAT22290****Section 5 - FIRE FIGHTING MEASURES****Extinguishing Media****Suitable Extinguishing Media**

carbon dioxide, regular dry chemical, Large fires: Use regular foam or flood with fine water spray.

Unsuitable Extinguishing Media

None known.

Special Hazards Arising from the Chemical

Negligible fire hazard.

Hazardous Combustion Products

sulfur oxides

Fire Fighting Measures

Move container from fire area if it can be done without risk. Cool containers with water spray until well after the fire is out. Stay away from the ends of tanks. Keep unnecessary people away, isolate hazard area and deny entry.

Special Protective Equipment and Precautions for Firefighters

Wear full protective fire fighting gear including self contained breathing apparatus (SCBA) for protection against possible exposure.

Section 6 - ACCIDENTAL RELEASE MEASURES**Personal Precautions, Protective Equipment and Emergency Procedures**

Wear personal protective clothing and equipment, see Section 8.

Methods and Materials for Containment and Cleaning Up

Keep unnecessary people away, isolate hazard area and deny entry. Stay upwind and keep out of low areas.

Ventilate closed spaces before entering. Evacuation radius: 150 feet. Stop leak if possible without personal risk.

Reduce vapors with water spray. Do not get water directly on material.

Environmental Precautions

Avoid release to the environment.

Section 7 - HANDLING AND STORAGE**Precautions for Safe Handling**

Do not get in eyes, on skin, or on clothing. Do not breathe gas, fumes, vapor, or spray. Wash hands thoroughly after handling. Use only outdoors or in a well-ventilated area. Wear protective gloves/protective clothing/eye protection/face protection. Contaminated work clothing should not be allowed out of the workplace. Do not eat, drink or smoke when using this product. Keep only in original container. Avoid release to the environment.

Conditions for Safe Storage, Including any Incompatibilities

Store in a well-ventilated place. Keep container tightly closed.

Store locked up.

Protect from sunlight.

Store and handle in accordance with all current regulations and standards. Protect from physical damage. Store outside or in a detached building. Keep separated from incompatible substances.

Incompatible Materials

bases, combustible materials, halogens, metal carbide, metal oxides, metals, oxidizing materials, peroxides, reducing agents

Section 8 - EXPOSURE CONTROLS / PERSONAL PROTECTION**Component Exposure Limits**

Sulfur dioxide	7446-09-5
ACGIH:	0.25 ppm STEL

Colgate Operating LLC	H ₂ S Contingency Plan Bondi 24 Fed Com 131H, 132H, 201H, 202H	Eddy County, New Mexico
-----------------------	---	-------------------------

**MATHESON**

ask... The Gas Professionals™

Safety Data Sheet**Material Name: SULFUR DIOXIDE****SDS ID: MAT22290**

Water Solubility	22.8 % (@ 0 °C)	Partition coefficient: n-octanol/water	Not available
Viscosity	Not available	Kinematic viscosity	Not available
Solubility (Other)	Not available	Density	Not available
Physical Form	liquified gas	Molecular Formula	S-O ₂
Molecular Weight	64.06		

Solvent Solubility**Soluble**

alcohol, acetic acid, sulfuric acid, ether, chloroform, Benzene, sulfuryl chloride, nitrobenzenes, Toluene, acetone

Section 10 - STABILITY AND REACTIVITY**Reactivity**

No reactivity hazard is expected.

Chemical Stability

Stable at normal temperatures and pressure.

Possibility of Hazardous Reactions

Will not polymerize.

Conditions to Avoid

Minimize contact with material. Containers may rupture or explode if exposed to heat.

Incompatible Materials

bases, combustible materials, halogens, metal carbide, metal oxides, metals, oxidizing materials, peroxides, reducing agents

Hazardous decomposition products

oxides of sulfur

Section 11 - TOXICOLOGICAL INFORMATION**Information on Likely Routes of Exposure****Inhalation**

Toxic if inhaled. Causes damage to respiratory system, burns, difficulty breathing

Skin Contact

skin burns

Eye Contact

eye burns

Ingestion

burns, nausea, vomiting, diarrhea, stomach pain

Acute and Chronic Toxicity**Component Analysis - LD50/LC50**

The components of this material have been reviewed in various sources and the following selected endpoints are published:

Sulfur dioxide (7446-09-5)

Inhalation LC50 Rat 965 - 1168 ppm 4 h

Product Toxicity Data**Acute Toxicity Estimate**

No data available.

Immediate Effects

Colgate Operating LLC	H ₂ S Contingency Plan Bondi 24 Fed Com 131H, 132H, 201H, 202H	Eddy County, New Mexico
-----------------------	---	-------------------------

**MATHESON**

ask. . .The Gas Professionals™

Safety Data Sheet**Material Name: SULFUR DIOXIDE****SDS ID: MAT22290**

Hazard Class: 2.3
 UN/NA #: UN1079
 Required Label(s): 2.3

IMDG Information:
 Shipping Name: SULPHUR DIOXIDE
 Hazard Class: 2.3
 UN#: UN1079
 Required Label(s): 2.3

TDG Information:
 Shipping Name: SULFUR DIOXIDE
 Hazard Class: 2.3
 UN#: UN1079
 Required Label(s): 2.3

International Bulk Chemical Code

This material does not contain any chemicals required by the IBC Code to be identified as dangerous chemicals in bulk.

Section 15 - REGULATORY INFORMATION**U.S. Federal Regulations**

This material contains one or more of the following chemicals required to be identified under SARA Section 302 (40 CFR 355 Appendix A), SARA Section 313 (40 CFR 372.65), CERCLA (40 CFR 302.4), TSCA 12(b), and/or require an OSHA process safety plan.

Sulfur dioxide	7446-09-5
SARA 302:	500 lb TPQ
OSHA (safety):	1000 lb TQ (Liquid)
SARA 304:	500 lb EPCRA RQ

SARA Section 311/312 (40 CFR 370 Subparts B and C) reporting categories

Gas Under Pressure; Acute toxicity; Skin Corrosion/Irritation; Serious Eye Damage/Eye Irritation; Simple Asphyxiant

U.S. State Regulations

The following components appear on one or more of the following state hazardous substances lists:

Component	CAS	CA	MA	MN	NJ	PA
Sulfur dioxide	7446-09-5	Yes	Yes	Yes	Yes	Yes

California Safe Drinking Water and Toxic Enforcement Act (Proposition 65)**WARNING**

This product can expose you to chemicals including Sulfur dioxide , which is known to the State of California to cause birth defects or other reproductive harm. For more information go to www.P65Warnings.ca.gov.

Operator Name: COLGATE OPERATING, LLC**Well Name:** BONDI 24 FED COM**Well Number:** 132H**Waste disposal type:** HAUL TO COMMERCIAL FACILITY **Disposal location ownership:** COMMERCIAL**Disposal type description:****Disposal location description:** R360 Environmental Solutions 4507 W Carlsbad Hwy Hobbs, NM 88240**Waste type:** SEWAGE

Waste content description: Portable, self-contained toilets will be provided for human waste disposal. Upon completion of drilling and completion activities, or as required, the toilet holding tanks will be pumped and the contents thereof disposed of in an approved sewage disposal facility. All state and local laws and regulations pertaining to the disposal of human and solid waste will be complied with. This equipment will be properly maintained during the drilling and completion operations and will be removed when all operations are complete.

Amount of waste: 250 gallons**Waste disposal frequency :** Weekly

Safe containment description: Portable, self-contained toilets will be provided for human waste disposal. Upon completion of drilling and completion activities, or as required, the toilet holding tanks will be pumped and the contents thereof disposed of in an approved sewage disposal facility. All state and local laws and regulations pertaining to the disposal of human and solid waste will be complied with. This equipment will be properly maintained during the drilling and completion operations and will be removed when all operations are complete.

Safe containmant attachment:**Waste disposal type:** HAUL TO COMMERCIAL FACILITY **Disposal location ownership:** COMMERCIAL**Disposal type description:****Disposal location description:** A licensed 3rd party contractor to haul and dispose of human waste.**Waste type:** GARBAGE

Waste content description: Garbage and Other Waste Materials. All garbage, junk and non-flammable waste materials will be contained in a self-contained, portable dumpster or trash cage, to prevent scattering and will be removed and deposited in an approved sanitary landfill. Immediately after drilling all debris and other waste materials on and around the well location not contained in the trash cage will be cleaned up and removed from the location. No potentially adverse materials or substances will be left on the location.

Amount of waste: 250 pounds**Waste disposal frequency :** Weekly

Safe containment description: Garbage and Other Waste Materials. All garbage, junk and non-flammable waste materials will be contained in a self-contained, portable dumpster or trash cage, to prevent scattering and will be removed and deposited in an approved sanitary landfill. Immediately after drilling all debris and other waste materials on and around the well location not contained in the trash cage will be cleaned up and removed from the location. No potentially adverse materials or substances will be left on the location.

Safe containmant attachment:**Waste disposal type:** HAUL TO COMMERCIAL FACILITY **Disposal location ownership:** COMMERCIAL**Disposal type description:****Disposal location description:** A licensed 3rd party contractor will be used to haul and dispose of garbage.**Reserve Pit**

Operator Name: COLGATE OPERATING, LLC**Well Name:** BONDI 24 FED COM**Well Number:** 132H**Reserve Pit being used?** NO**Temporary disposal of produced water into reserve pit?** NO**Reserve pit length (ft.)** **Reserve pit width (ft.)****Reserve pit depth (ft.)** **Reserve pit volume (cu. yd.)****Is at least 50% of the reserve pit in cut?****Reserve pit liner****Reserve pit liner specifications and installation description**

Cuttings Area

Cuttings Area being used? NO**Are you storing cuttings on location?** N**Description of cuttings location****Cuttings area length (ft.)** **Cuttings area width (ft.)****Cuttings area depth (ft.)** **Cuttings area volume (cu. yd.)****Is at least 50% of the cuttings area in cut?****WCuttings area liner****Cuttings area liner specifications and installation description**

Section 8 - Ancillary

Are you requesting any Ancillary Facilities?: N**Ancillary Facilities****Comments:**

Section 9 - Well Site

Well Site Layout Diagram:

Bondi_24_Fed_WSL_NENE_20240222051221.pdf

Bondi_24_Fed_RL_NENE_20240222051225.pdf

Comments: Rig Plat Diagrams: There are two (2) multi-well pads requested for the Bondi 24 Fed Com anticipated project. The proposed pads will allow enough space for cuts and fills, topsoil storage, and storm water control and sizes are approximations based on these needs. Interim reclamation of these pads is anticipated after the drilling and completion of all wells on the pad. The well site layout for all pads is attached. 1. NENE Pad: 507ft x 430ft (6.558 Acres), V-Door: West 2. NESE Pad: 577ft x 484ft (6.330 Acres), V-Door: West

District I
1625 N. French Dr., Hobbs, NM 88240
Phone:(575) 393-6161 Fax:(575) 393-0720
District II
811 S. First St., Artesia, NM 88210
Phone:(575) 748-1283 Fax:(575) 748-9720
District III
1000 Rio Brazos Rd., Aztec, NM 87410
Phone:(505) 334-6178 Fax:(505) 334-6170
District IV
1220 S. St Francis Dr., Santa Fe, NM 87505
Phone:(505) 476-3470 Fax:(505) 476-3462

State of New Mexico
Energy, Minerals and Natural Resources
Oil Conservation Division
1220 S. St Francis Dr.
Santa Fe, NM 87505

CONDITIONS

Action 386169

CONDITIONS

Operator: COLGATE OPERATING, LLC 300 North Marienfeld Street Midland, TX 79701	OGRID:
	371449
	Action Number:
	386169
Action Type:	
[C-101] BLM - Federal/Indian Land Lease (Form 3160-3)	

CONDITIONS

Created By	Condition	Condition Date
ward.rikala	Notify OCD 24 hours prior to casing & cement	10/1/2024
ward.rikala	Will require a File As Drilled C-102 and a Directional Survey with the C-104	10/1/2024
ward.rikala	Once the well is spud, to prevent ground water contamination through whole or partial conduits from the surface, the operator shall drill without interruption through the fresh water zone or zones and shall immediately set in cement the water protection string	10/1/2024
ward.rikala	Cement is required to circulate on both surface and intermediate1 strings of casing	10/1/2024
ward.rikala	If cement does not circulate on any string, a CBL is required for that string of casing	10/1/2024
ward.rikala	Oil base muds are not to be used until fresh water zones are cased and cemented providing isolation from the oil or diesel. This includes synthetic oils. Oil based mud, drilling fluids and solids must be contained in a steel closed loop system	10/1/2024
ward.rikala	Submit C-102 on new C-102 form.	10/1/2024