

Santa Fe Main Office  
Phone: (505) 476-3441 Fax: (505) 476-3462  
General Information  
Phone: (505) 629-6116

State of New Mexico  
Energy, Minerals and Natural Resources

Form C-103  
Revised July 18, 2013

Online Phone Directory Visit:  
<https://www.emnrd.nm.gov/oed/contact-us/>

OIL CONSERVATION DIVISION  
1220 South St. Francis Dr.  
Santa Fe, NM 87505

WELL API NO. 30-041-20584
5. Indicate Type of Lease STATE <input type="checkbox"/> FEE <input checked="" type="checkbox"/>
6. State Oil & Gas Lease No.
7. Lease Name or Unit Agreement Name Lambirth. A
8. Well Number 6
9. OGRID Number 328992
10. Pool name or Wildcat SWD Fusselman Montoya

<p>SUNDRY NOTICES AND REPORTS ON WELLS (DO NOT USE THIS FORM FOR PROPOSALS TO DRILL OR TO DEEPEN OR PLUG BACK TO A DIFFERENT RESERVOIR. USE "APPLICATION FOR PERMIT" (FORM C-101) FOR SUCH PROPOSALS.)</p>	
1. Type of Well: Oil Well <input type="checkbox"/> Gas Well <input type="checkbox"/> Other SWD	
2. Name of Operator Sabinal Energy Operating, LLC	
3. Address of Operator 1780 Hughes Landing Blvd, Ste 1200	
4. Well Location Unit Letter <u>J</u> : <u>1830</u> feet from the <u>South</u> line and <u>1980</u> feet from the <u>East</u> line Section <u>30</u> Township <u>5S</u> Range <u>33E</u> NMPM Roosevelt County	
11. Elevation (Show whether DR, RKB, RT, GR, etc.)	

12. Check Appropriate Box to Indicate Nature of Notice, Report or Other Data

NOTICE OF INTENTION TO:		SUBSEQUENT REPORT OF:	
PERFORM REMEDIAL WORK <input type="checkbox"/>	PLUG AND ABANDON <input type="checkbox"/>	REMEDIAL WORK <input type="checkbox"/>	ALTERING CASING <input type="checkbox"/>
TEMPORARILY ABANDON <input type="checkbox"/>	CHANGE PLANS <input type="checkbox"/>	COMMENCE DRILLING OPNS. <input type="checkbox"/>	P AND A <input checked="" type="checkbox"/>
PULL OR ALTER CASING <input type="checkbox"/>	MULTIPLE COMPL <input type="checkbox"/>	CASING/CEMENT JOB <input type="checkbox"/>	
DOWNHOLE COMMINGLE <input type="checkbox"/>			PNR
CLOSED-LOOP SYSTEM <input type="checkbox"/>			
OTHER: <input type="checkbox"/>		OTHER: <input type="checkbox"/>	

13. Describe proposed or completed operations. (Clearly state all pertinent details, and give pertinent dates, including estimated date of starting any proposed work). SEE RULE 19.15.7.14 NMAC. For Multiple Completions: Attach wellbore diagram of proposed completion or recompletion.

Tagged at 7310', cut out cement, drilled out CIBP at 7336', got through plug, pushed remaining pieces of CIBP to top of fish at 7383'. No fluid loss after cutting out CIBP. Called NMOCD. Did not get a response. Will retry Monday.  
Spoke with David Alverado with NMOCD. Set packer above fish at 7385', loaded with 1/2 bbl, pressured up to 750#, lost 50# in 15 min.  
Spoke with David again, agreed to spot 25sx cement on fish at 7385', circ MLF, spot 25sx Class H cement on fish at 7385'. Pressured up to 750#. Shut in.  
Tagged cement at 7144'. Ran bond log. Send log to NMOCD.  
Discussed with Kerry Fortner. RIH Spot 25 sx Class H at 7144'. This will finish covering the Todd/Hueco formations.  
Perforated at 6460' per NMOCD. Pressured up on perms to 750#, held. Repeat with same results.  
Spot 25 sx Class H cement at 6534' across the perms. Tagged at 6315'.  
Spot 25 sx Class C cement at 5804' across top of the Tubbs.  
Perforated at 4390'. Pressured up to 600# and held. Repeat with same results.  
Spot 25 sx Class C cement across perms from 4440'. Tagged at 4274'.  
Perforated at 3484'. Pressured up to 550# on perms. Repeated to 600#.  
Spot 25 sx cement across perforations from 3552'. Tagged cement at 3362'.  
Spot 25 sx cement at 3180' across the San Andres.  
Spot 40 sx cement at 2105' across the top of the Yates/Rustler.  
Perforated at 405'. Pressured up to 550# and held. Repeated with same results.  
RIH with tubing to 457' and circulated cement to surface with 45 sx inside the 5.5" casing.  
Dug out cellar, removed the wellhead, filled 5.5" casing with 2sx cmt, installed standard marker. Cleared location.

DHM set 8/28/24

Spud Date:

12/05/1981

Rig Release Date:

CBL is on file

I hereby certify that the information above is true and complete to the best of my knowledge and belief.

SIGNATURE Jamy Smith TITLE Land Tech II DATE 09/10/2024

Type or print name Jamy Smith E-mail address: jamys@sabinalenergy.com PHONE: 346-224-9889

For State Use Only

APPROVED BY: Kerry Fortner TITLE Compliance Officer A DATE 10/7/24

Conditions of Approval (if any):

**Sabinal Energy Operating, LLC**  
**Lambirth A #6**  
**30-041-20584**

- 8/14/2024: Cleared location, set matting board and rigged up. Installed BOP. Called for reverse unit to drill out existing CIBP at 7336'. SION
- 8/15/2024 :Moved in collars and reverse unit. Picked up 4 ¾" bit and 6 3.5" collars. Moved in workstring and began picking up tubing. Tagged up at 7310'. Installed stripping head and picked up swivel. SION. Will start drilling on CIBP in the morning.
- 8/16/2024: Tagged up at 7310' and began to drill out cement. Cut out cement and drilled out CIBP at 7336'. Got through plug and pushed remaining pieces of CIBP to top of fish at 7383'. No fluid loss after cutting out CIBP. Laid down swivel and 1 joint of pipe. Shut in and Shut down. Called NMOCD. Did not get a response. Will retry Monday.
- 8/19/2024: Spoke with David Alverado with the NMOCD. POOH with tubing, collars and bit. Picked up packer and set above the fish at 7385'. Loaded with ½ bbl and pressured up to 750#. Lost 50# in 15 minutes. Spoke with David again. Agreed to spot 25 sx cement on the fish at 7385'. POOH with packer and RIH with tubing to 7385'. Circulated MLF. Pumped 125 bbls and broke the drive belt on the cement pump triplex. Shut in and shut down. Will get parts and repair tomorrow.
- 8/20/2024: Down for repairs
- 8/21/2024: Finished circulating MLF and spot 25 sx Class H cement on top of fish at 7385'. POOH 15 stands. Closed BOP and casing valve and pressured up on wellbore to 750#. Shut in. Will tag in the morning. Moved out reverse unit 8/20/2024.
- 8/22/2024: Tagged cement at 7144'. POOH and fill 5.5" casing with brine. Run bond log. Send log to NMOCD. Discussed with Kerry Fortner. RIH with tubing and spot 25 sx Class H at 7144'. This will finish covering the Todd/Hueco formations. Stood back 103 stands and SION.

**Plug list after logging cement as per NMOCD**

- Abo-perforate and attempt to squeeze with 40 sx
- Tubb-spot 25 sx
- Glorieta-perforate and attempt to squeeze with 40 sx
- Intermediate Shoe-perforate and attempt to squeeze with 40 sx
- San Andres-spot 25 sx
- Yates/Rustler-spot 40 sx
- Surface Shoe-Perforate and attempt to circulate to surface

- 8/23/2024: Perforated at 6460' as per NMOCD. Set packer and pressured up on perforations to 750# and held. No drop. Bled off pressure to the pump truck. Repeated to 750# with same results. POOH with packer. RIH with tubing to 6534' and spot 25 sx Class H cement with CaCl across the perfs. WOC and tagged at 6315'. POOH to 5804' and spot 25 sx Class C cement across top of the Tubb. Stood back 70 stands and laid down remaining tubing. Shut in and shut down
- 8/26/2024: Perforated at 4390'. Set packer and pressured up to 600# and held. Bled down to truck and repeated. Pulled packer and spot 25 sx Class C cement with CaCl across perfs from 4440'. WOC and tagged at 4274'. Perforated at 3484'. Set packer and pressured up to 550# on perforations. Bled down to truck and repeated to 600#. Pulled packer and spot 25 sx cement across perforations from 3552'. Stood back 15 stands and SION.
- 8/27/2024: Tagged cement at 3362'. POOH to 3180' and spot 25 sx cement across the San Andres. POOH to 2105' and spot 40 sx cement across the top of the Yates/Rustler. Perforated at 405'. Pressured up to 550# and held. Bled down to the truck and repeated with same results. RIH with tubing to 457' and circulated cement to surface with 45 sx inside the 5.5" casing. Rigged down.
- 8/28/2024: Dug out cellar and removed the wellhead. Filled up 5.5" casing with 2 sx cement. Installed standard marker. Cleared location.

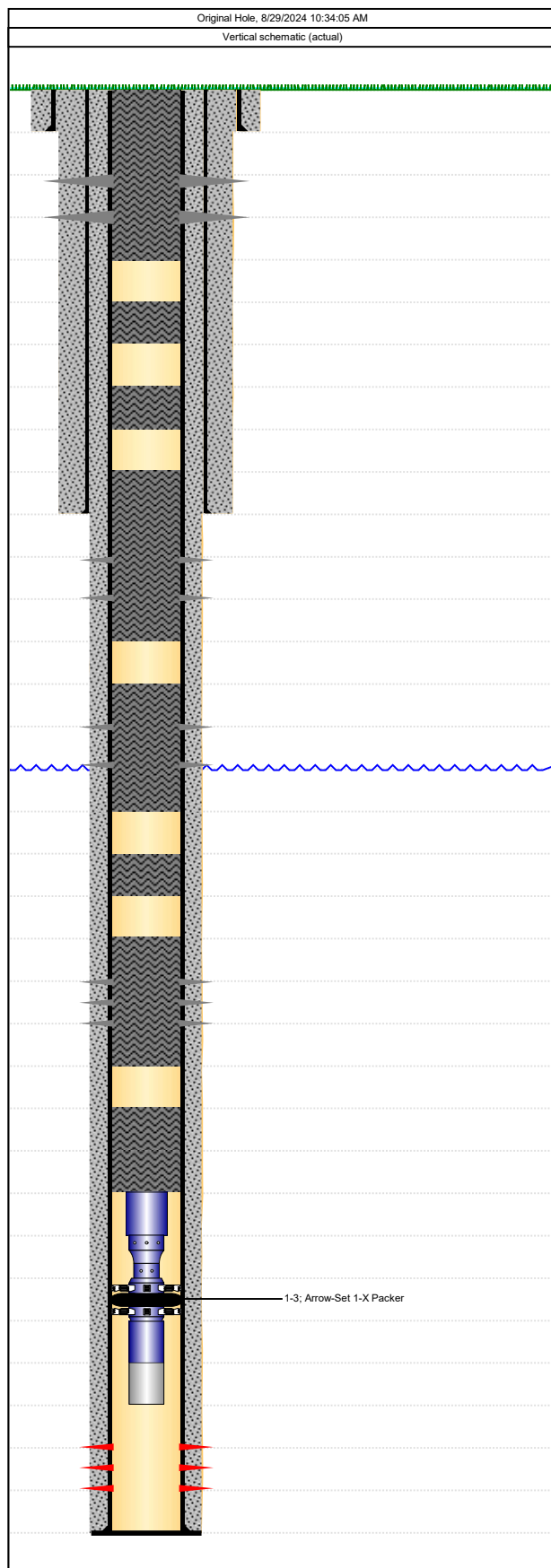


Sabinal Energy, LLC

## Wellbore Diagram

Well Name: LAMBIRTH A 6 SWD

API/UWI 30041205840000	Extra Well ID B 1603005	BOLO Shadow Key =7902	Field Name Lambrith Field	State/Province New Mexico	Well Configuration Type
Original KB Elevation (ft) 4,393.00	KB-Ground Distance (ft) 15.00	Spud Date 12/5/1981 00:00	Rig Release Date	PBTD (All) (ftKB) Original Hole - 8,100.0	Total Depth All (TVD) (ftKB)



Wellbore Sections								
Section Des			Size (in)	Act Top (ftKB)	Act Btm (ftKB)			
Surface			16	15.0	355.0			
Intermediate			12 1/4	355.0	3,434.0			
Production			7 7/8	3,434.0	8,100.0			
Casing Strings								
Csg Des	OD (in)	ID (in)	Wt/Len (lb/ft)	Grade	Top (ftKB)	Set Depth (ftKB)		
Surface	13 3/8	12.72	48.00	H-40	15.0	355.0		
Intermediate	8 5/8	8.10	24.00	J-55	15.0	3,434.0		
Production	5 1/2	4.89	17.00	J-55	15.0	8,100.0		
Perforations								
Date	Top (ftKB)	Btm (ftKB)	Shot Dens (shots/ft)	Current Status				
8/27/2024	405.0	406.0	1.0	Plugged (405.0 - 406.0 ftKB)				
8/26/2024	3,484.0	3,485.0	1.0	Plugged (3,484.0 - 3,485.0 ftKB)				
8/23/2024	4,390.0	4,391.0	1.0	Plugged (4,390.0 - 4,391.0 ftKB)				
8/22/2024	6,460.0	6,461.0	1.0	Plugged (6,460.0 - 6,461.0 ftKB)				
5/1/1982	7,892.0	7,944.0	2.0	Open - Flowing (7,892.0 - 7,944.0 ftKB)				
Tubing Strings								
Tubing Description Tubing - Fish		Run Date 4/28/2015		String Length (ft) 474.12	Set Depth (ftKB) 7,857.1			
Jts	Item Des	OD (in)	ID (in)	Wt (lb/ft)	Grade	Len (ft)	Top (ftKB)	Btm (ftKB)
13	IPC - Tubing	2 7/8	2.44	0.00	N-80	431.40	7,383.0	7,814.4
1	Cross Over	2 3/8				3.00	7,814.4	7,817.4
1	Arrow-Set 1-X Packer	2 3/8				6.45	7,817.4	7,823.8
1	IPC Int.	2 3/8	1.87	4.70	C-90	32.77	7,823.8	7,856.6
1	Nickel Ext	2 3/8				0.50	7,856.6	7,857.1
Rod Strings								
Rod Description		Run Date		String Length (ft)	Set Depth (ftKB)			
Jts	Item Des	OD (in)	Wt (lb/ft)	Grade	Len (ft)	Top (ftKB)	Btm (ftKB)	
Rod Pumps								
Bore (in)	API Pump T...	API Bbl Type	API Anchor...	Seat Assy T...	Barrel Leng...	Nom Plung...	Upper E...	Lwr Ext...

**District I**  
1625 N. French Dr., Hobbs, NM 88240  
Phone:(575) 393-6161 Fax:(575) 393-0720  
**District II**  
811 S. First St., Artesia, NM 88210  
Phone:(575) 748-1283 Fax:(575) 748-9720  
**District III**  
1000 Rio Brazos Rd., Aztec, NM 87410  
Phone:(505) 334-6178 Fax:(505) 334-6170  
**District IV**  
1220 S. St Francis Dr., Santa Fe, NM 87505  
Phone:(505) 476-3470 Fax:(505) 476-3462

**State of New Mexico**  
**Energy, Minerals and Natural Resources**  
**Oil Conservation Division**  
**1220 S. St Francis Dr.**  
**Santa Fe, NM 87505**

CONDITIONS

Action 382094

CONDITIONS

Operator: Sabinal Energy Operating, LLC 1780 HUGHES LANDING BLVD THE WOODLANDS, TX 77380	OGRID: 328992
	Action Number: 382094
	Action Type: [C-103] Sub. Plugging (C-103P)

CONDITIONS

Created By	Condition	Condition Date
kfortner	Need C103Q and DHM photo to release CBL is in files DHM set 8/28/24	10/7/2024