

U.S. Department of the Interior
BUREAU OF LAND MANAGEMENT

Well Name: SAN JUAN 32-8 UNIT

Well Location: T31N / R8W / SEC 14 /
SWNW / 36.89952 / -107.651

County or Parish/State: SAN
JUAN / NM

Well Number: 303

Type of Well: INJECTION - ENHANCED
RECOVERY

Allottee or Tribe Name:

Lease Number: NMSF079047

Unit or CA Name:

Unit or CA Number:

US Well Number: 3004528703

Operator: HILCORP ENERGY
COMPANY

Subsequent Report

Sundry ID: 2806978

Type of Submission: Subsequent Report

Type of Action: Workover Operations

Date Sundry Submitted: 08/15/2024

Time Sundry Submitted: 05:48

Date Operation Actually Began: 07/31/2024

Actual Procedure: Hilcorp Energy has repaired the packer on the subject well per the attached reports.

SR Attachments

Actual Procedure

SJ_32_8_UNIT_303_SWD_SR_Packer_Repair_BLM_Submitted_20240815054736.pdf

Well Name: SAN JUAN 32-8 UNIT

Well Location: T31N / R8W / SEC 14 /
SWNW / 36.89952 / -107.651County or Parish/State: SAN
JUAN / NM

Well Number: 303

Type of Well: INJECTION - ENHANCED
RECOVERY

Allottee or Tribe Name:

Lease Number: NMSF079047

Unit or CA Name:

Unit or CA Number:

US Well Number: 3004528703

Operator: HILCORP ENERGY
COMPANY**Operator**

I certify that the foregoing is true and correct. Title 18 U.S.C. Section 1001 and Title 43 U.S.C. Section 1212, make it a crime for any person knowingly and willfully to make to any department or agency of the United States any false, fictitious or fraudulent statements or representations as to any matter within its jurisdiction. Electronic submission of Sundry Notices through this system satisfies regulations requiring a

Operator Electronic Signature: PRISCILLA SHORTY

Signed on: AUG 15, 2024 05:48 AM

Name: HILCORP ENERGY COMPANY

Title: Regulatory Technician

Street Address: 382 ROAD 3100

City: AZTEC

State: NM

Phone: (505) 324-5188

Email address: PSHORTY@HILCORP.COM

Field

Representative Name:

Street Address:

City:

State:

Zip:

Phone:

Email address:

BLM Point of Contact

BLM POC Name: KENNETH G RENNICK

BLM POC Title: Petroleum Engineer

BLM POC Phone: 5055647742

BLM POC Email Address: krennick@blm.gov

Disposition: Accepted

Disposition Date: 08/15/2024

Signature: Kenneth Rennick

SAN JUAN 32-8 UNIT 303 SWD

30.045.28703

PACKER REPAIR

7/31/2024 – CK PRESSURES. SITP: 1450 PSI, SICP: 2000 PSI, SIIC: 0 PSI, SIBH: 0 PSI. NO BD. SPOT RIG AND EQUIPMENT. RIG UP. INSTALL BPV IN TUBING HANGER. NIPPLE DOWN WELLHEAD, NIPPLE UP BOPE AND ANNULAR PREVENTOR. PRESSURE TEST BLIND RAMS 300PSI LOW AND 3000 PSI HIGH. SDFN.

8/1/2024 - CK PRESSURES. SITP: 0 PSI, SICP: 1800 PSI, SIIC: 0 PSI, SIBH: 0 PSI. NO BD. RIG UP WELLCHECK AND PRESSURE TEST PIPE RAMS, MULTIPLE LEAKS ON BOPE, CALL FOR REPLACEMENT BOPE. NIPPLE DOWN ANNULAR AND BOPE. NIPPLE UP RENTAL BOPE AND ANNULAR. RIG UP WELLCHECK AND PRESSURE TEST BLIND RAMS 250 PSI LOW AND 3000 PSI HIGH. PRESSURE TEST PIPE RAMS 250 PSI LOW AND 3000 PSI HIGH. PRESSURE TEST ANNULAR PREVENTOR 250 PSI LOW AND 2500 PSI HIGH. RIG UP TO EQUALIZE AND PULL TUBING HANGER, TROUBLE WITH LOCKING PIN AND GLAND NUT PACKING. RELAND HANGER INSTALL LOCKING PINS. REPLACE LOCKING PIN AND PACKING. SDFN.

8/2/2024 - CK PRESSURES. SITP: 0 PSI, SICP: 1800 PSI, SIIC: 0 PSI, SIBH: 0 PSI. NO BD. BRT ON LOCATION, REPLACE PACKING IN LOCKING PINS. EQUALIZE BOPE AND RELEASE AND PULL TUBING HANGER TO THE RIG FLOOR. RIG UP WELLCHECK AND LUBRICATE BPV OUT OF TUBING HANGER, 2200 PSI. BLEED DOWN TUBING TO ZERO. PULL 1 JOINT AND PUP JOINTS, STRIPPING HEAD RUBBER IN PIECES. NIPPLE UP WASHINGTON STRIPPING HEAD. INSTALL RUBBER AND TRIP OUT OF THE HOLE LAYING DOWN 10 MORE JOINTS OF TUBING, 11 TOTAL FROM THE WELL, STRIPPING HEAD RUBBER IS WIPED OUT, ANNULAR RUBBER IS ALSO NOT HOLDING PRESSURE. THE RUBBER IS WIPED OUT. DECISION WAS MADE TO LAND TUBING HANGER AND WAIT ON SNUBBING UNIT. EQUALIZE BOPE AND LAND TUBING HANGER, EOT AT 8025'. RIG DOWN FLOOR, NIPPLE DOWN STRIPPING HEAD AND ANNULAR PREVENTOR. SDFWE.

8/7/2024 - CK PRESSURES. SITP: 0 PSI, SICP: 1800 PSI, SIIC: 0 PSI, SIBH: 0 PSI. NO BD. NIPPLE UP SPACER SPOOLS AND SNUBBING UNIT. PRESSURE TEST SNUBBING STACK TO 3000 PSI, GOOD TEST. EQUALIZE TUBING, RELEASE AND PULL TUBING HANGER, LAY DOWN HANGER. TRIP OUT OF THE HOLE LAYING DOWN 35 JOINTS OF TUBING. WELL STARTED TO FLOW UP TUBING, INSTALL TIW VALVE, CHECK TUBING PRESSURE AT 1700 PSI. CALL FOR SLICKLINE UNIT. WAIT ON SLICKLINE UNIT. JOB STOPPED DUE TO LIGHTNING. SDFN.

8/8/2024 - CK PRESSURES. SITP: 0 PSI, SICP: 1800 PSI, SIIC: 0 PSI, SIBH: 0 PSI. NO BD. RIG UP EXPERT SLICKLINE UNIT ON SNUBBING UNIT. EQUALIZE, RUN IN HOLE WITH 1.78 F-NIPPLE PLUG. SET IN F-NIPPLE AT 7196'. OPEN TUBING, WELL FLOWING AT 15 GALLONS PER MINUTE, 20 BBLS PER HOUR. RUN SLICKLINE IN HOLE TO PUNCH DISC AND PULL F-NIPPLE PLUG. CANNOT GET BACK TO PLUG DUE TO FILL ON PLUG. RIG DOWN WIRELINE UNIT. TRIP OUT OF THE HOLE LAYING DOWN WET TUBING STRING FLOWING OVER THE TOP OF THE TUBING. BLACK COAL WATER AT TIMES. PULLING THROUGH SNUBBING UNIT. SDFN.

8/9/2024 - CK PRESSURES. SITP: 0 PSI, SICP: 1800 PSI, SIIC: 0 PSI, SIBH: 0 PSI. NO BD. TRIP OUT OF THE HOLE LAYING DOWN WET TUBING STRING FLOWING OVER THE TOP OF THE TUBING. BLACK COAL WATER AT TIMES. PULLING THROUGH SNUBBING UNIT. LAY DOWN A TOTAL OF 189 JOINTS, TUBING STOPPED FLOWING OVER THE TOP OF TUBING, CHECK JOINTS #187, #188 AND #189, DID NOT FIND ANY HOLES IN TUBING. SNUB THE LAST 75 JOINTS OUT OF THE WELL. THE RUBBERS ON THE PACKER ARE GONE. SENT 237 JOINTS OF 2 7/8" IPC EUE AND 27 JOINTS OF HYDRILL 511 IPC TUBING TO TUBOSCOPE FOR INSPECTION. DOWN GRADE 47 JOINTS OF EUE

SAN JUAN 32-8 UNIT 303 SWD

30.045.28703

PACKER REPAIR

TUBING AND 5 JOINTS OF FLUSH JOINT TUBING. TUBING LEAK AT JOINT # 189 DUE TO CORROSION IN BOX AND PIN AT 6050'. TUBING HAS LARGE AMOUNT OF COAL CAKED TO WALLS OF TUBING IN THE BOTTOM JOINTS. RIG DOWN AND LOAD OUT SNUBBING UNIT. NIPPLE DOWN SPACER SPOOLS. RIG UP BASIN WIRELINE AND LUBRICATOR, RE-HEAD WIRELINE, RUN IN HOLE WITH 4.5 GAUGE RING TO 8400'. SDFN.

8/10/2024 - CK PRESSURES. SITP: 0 PSI, SICP: 1800 PSI, SIIC: 0 PSI, SIBH: 0 PSI. NO BD. PRESSURE TEST ALL PACKER CONNECTIONS TO 7000PSI. RIG UP AND BULLHEAD CASING CAPACITY 200 BBLS OF FRESH WATER INTO PERFS PUSHING ANY COAL BACK INTO PERFS BEFORE SETTING PACKER. RIG UP BASIN WIRELINE AND LUBRICATOR, PICK UP PACKER ASSEMBLY AND RUN IN THE HOLE. SET PACKER AT 8350'. PERFORM NEGATIVE PRESSURE TEST. (GOOD.) RIG DOWN BASIN WIRELINE. TRIP IN HOLE PICKING UP 22 JOINTS OF 2 7/8" 511 HYDRIL TUBING. RIG UP CREEDENCE CHEMICALS AND LOAD TUBING WITH 180 GALLONS OF 15% HCL INHIBITED ACID. LET ACID WORK FOR 2 HOURS. CIRCULATE OUT WITH 15 BBLS OF WATER. TRIP OUT OF THE HOLE LAYING DOWN 22 JOINTS OF TUBING. SDFN.

8/11/2024 - CK PRESSURES. SITP: 0 PSI, SICP: 0 PSI, SIIC: 0 PSI, SIBH: 0 PSI. NO BD. SET PLUG IN F-NIPPLE, MAKE UP CHANGE OVER AND MAKE UP TO FIRST JOINT. PRESSURE TEST TO 7000 PSI, GOOD TEST. PULL PLUG. TRIP IN THE HOLE PICKING UP 22 JOINTS OF 2 7/8" 511 HYDRIL IPC YELLOW. 53 JOINTS OF 2 7/8" EUE IPC WHITE. 187 JOINTS OF 2 7/8" EUE, IPC YELLOW. HYDRO TEST IN THE HOLE, YO-YO HYDRO TEST TOOL. EOT AT 8259'. SDFN.

8/12/2024 - CK PRESSURES. SITP: 0 PSI, SICP: 0 PSI, SIIC: 0 PSI, SIBH: 0 PSI. NO BD. CHECK WELL FOR FLOW (NO FLOW). SPACE OUT TUBING. PRESSURE TEST PUP JOINTS AND TUBING HANGER TO 7000 PSI. (GOOD) RIG DOWN WILSON SERVICES. PUMP AND DISPLACE 130 BBLS OF PACKER FLUID. LATCH ON TO PACKER, PULL 70K, LAND TUBING WITH 14K COMPRESSION ON PACKER. STRING LANDED AS FOLLOWS: (1)- 2 7/8" X 3K TUBING HANGER (.85"); (1)- 2 7/8" IPC EUE L-80 (33.15'); (4)- 2 7/8" IPC PUP JOINTS 10', 8', 6', 1', (188)- 2 7/8" IPC EUE L-80 (5960.21'); (53)- 2 7/8" IPC EUE L-80 (1653.41') (22)- 2 7/8" IPC 511 HYDRILL (660.46'); (1)- 2 7/8" EUE X 511 HYDRILL CHANGE OVER (.69); (1)- 2 3/8" X 1.781 NICKEL COATED F-NIPPLE (.91"); (1)- 2 3/8" ON-OFF RETRIEVAL TOOL (.1.43"); (1)- 2 3/8" FULL OPEN STINGER (1.18"); (1)- 4 1/2" AS1-X NICKEL COATED PACKER.(6.51') (1)- 2 3/8" NICKEL COATED PUP JOINT IPC (6.03') (1)- 3 1/16" X 1.781 R NIPPLE WITH NO GO (.92"); (1)- 3 1/16"DUAL DISC SUB (1.30'); (1)- 3 1/16" WIRELINE ENTRY GUIDE (.37"). LAND EOT AT 8367'. PACKER AT 8350'. F-NIPPLE @8349. R-NIPPLE @ 8365. RIG DOWN THE FLOOR, NIPPLE DOWN BOPE, NIPPLE UP WELLHEAD. PACK LOCKING PINS AGAIN. PRESSURE TEST TUBING TO 3000 PSI AT SURFACE, 6800 PSI AT ON/OFF TOOL. (GOOD) PRE-MIT TEST TO 560 PSI FOR 30 MINUTES, (GOOD). RIG UP EXPERT DOWNHOLE SERVICES, RUN IN HOLE WITH SPEAR, EQUALIZE TUBING BREAK OUT DISC PLATES. RIG DOWN EXPERT. SDFN.

8/13/2024 - CK PRESSURES. SITP: 1842 PSI, SICP: 0 PSI, SIIC: 0 PSI, SIBH: 0 PSI. NO BD. REPACK 2 LOCKING PINS, I&E HOOK UP GAUGES AND FLOW METERS. **JOHN DURHAM NMOCD ON LOCATION TO WITNESS MIT. BRADENHEAD AND INTERMEDIATE CASING TEST, GOOD TEST ON BOTH.** PRESSURE TEST CASING 560 PSI FOR 30 MINUTES, CHARTED TEST. (GOOD). RD RR.

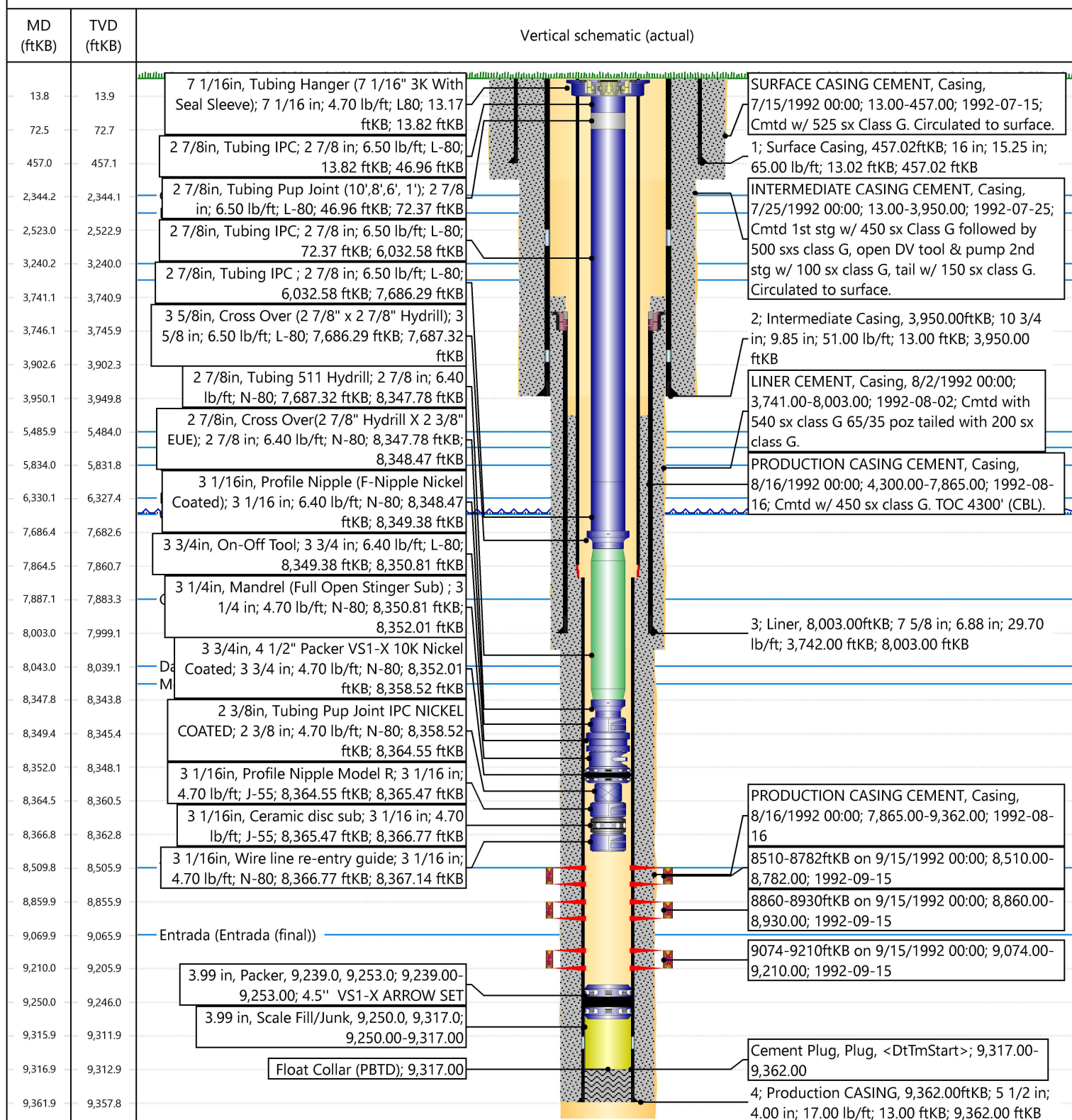


Current Schematic - Version 3

Well Name: SAN JUAN 32-8 UNIT #303 SWD

API / UWI 3004528703	Surface Legal Location 014-031N-008W-E	Field Name SWD; MORRISON-BLUFF-ENTRA	Route 0406	State/Province NEW MEXICO	Well Configuration Type Vertical
Ground Elevation (ft) 6,643.00	Original KB/RT Elevation (ft) 6,656.00	Tubing Hanger Elevation (ft)	RKB to GL (ft) 13.00	KB-Casing Flange Distance (ft)	KB-Tubing Hanger Distance (ft)
Tubing Strings					
Run Date 8/12/2024 12:00	Set Depth (ftKB) 8,367.14	String Max Nominal OD (in) 2 7/8	String Min Nominal ID (in) 2.44	Weight/Length (lb/ft) 6.50	Original Spud Date 7/15/1992 00:00

Original Hole [Vertical]







NEW MEXICO ENERGY, MINERALS and NATURAL RESOURCES DEPARTMENT

MECHANICAL INTEGRITY TEST REPORT (TA OR UIC)

Date of Test 13-AUG-2024 Operator HILCORP API # 30-0 415-28703

Property Name SJ 31-8 SWD Well # 303 Location: Unit E Sec 14 Twn 31 Rge 8

Land Type:

State _____
Federal ☒
Private _____
Indian _____

Well Type:

Water Injection _____
Salt Water Disposal ☒
Gas Injection _____
Producing Oil/Gas _____
Pressure observation _____

Temporarily Abandoned Well (Y/N): _____ TA Expires: _____

Casing Pres. _____

Tbg. SI Pres. _____

Max. Inj. Pres. _____

Bradenhead Pres. _____

Tbg. Inj. Pres. _____

Tubing Pres. _____

Int. Casing Pres. _____

Pressured annulus up to _____ psi. for _____ mins. Test passed/failed

REMARKS: TESTED FROM 4350 TO SURFACE

1000 PSI SPRING 60 MINUTE CLOCK. THE CASING
WAS PRESSURE UP TO 570 PSI AND PRESSURE FELL TO
560 AND HELD FOR THE LAST 10 MINUTES

By Joe McQuinn
(Operator Representative)

Witness [Signature]
(NMOCD)

(Position)

Revised 02-11-02



NEW MEXICO ENERGY, MINERALS
& NATURAL RESOURCES DEPARTMENT

OIL CONSERVATION DIVISION
AZTEC DISTRICT OFFICE
1000 RIO BRAZOS ROAD
AZTEC NM 87410
(505) 334-6178 FAX: (505) 334-6170
[http://emnr.state.nm.us/ocd/District III/3district.htm](http://emnr.state.nm.us/ocd/District%20III/3district.htm)

BRADENHEAD TEST REPORT

(submit 1 copy to above address)

Date of Test 13 Aug-2014 Operator HILLAR API #30-0 45-28703
Property Name 5 An Jan 32-8 SWP Well No. 303 Location: Unit E Section 14 Township 31 Range 8
Well Status(Shut-In or Producing) Initial PSI: Tubing 180 Intermediate 0 Casing 0 Bradenhead 0

OPEN BRADENHEAD AND INTERMEDIATE TO ATMOSPHERE INDIVIDUALLY FOR 15 MINUTES EACH

Testing	PRESSURE				
	Bradenhead			INTERM	
	BH	Int	Csg	Int	Csg
TIME					
5 min	0	0	0	0	0
10 min	0	0	0	0	0
15 min	0	0	0	0	0
20 min					
25 min					
30 min					

FLOW CHARACTERISTICS	
BRADENHEAD	INTERMEDIATE
Steady Flow	
Surges	
Down to Nothing	
Nothing	
Gas	
Gas & Water	
Water	

If bradenhead flowed water, check all of the descriptions that apply below:

CLEAR _____ FRESH _____ SALTY _____ SULFUR _____ BLACK _____

5 MINUTE SHUT-IN PRESSURE BRADENHEAD 0 INTERMEDIATE 0

REMARKS:

By Joe McElreath

Witness [Signature]

(Position)

E-mail address _____

District I
1625 N. French Dr., Hobbs, NM 88240
Phone:(575) 393-6161 Fax:(575) 393-0720
District II
811 S. First St., Artesia, NM 88210
Phone:(575) 748-1283 Fax:(575) 748-9720
District III
1000 Rio Brazos Rd., Aztec, NM 87410
Phone:(505) 334-6178 Fax:(505) 334-6170
District IV
1220 S. St Francis Dr., Santa Fe, NM 87505
Phone:(505) 476-3470 Fax:(505) 476-3462

State of New Mexico
Energy, Minerals and Natural Resources
Oil Conservation Division
1220 S. St Francis Dr.
Santa Fe, NM 87505

CONDITIONS

Action 374100

CONDITIONS

Operator: HILCORP ENERGY COMPANY 1111 Travis Street Houston, TX 77002	OGRID: 372171
	Action Number: 374100
	Action Type: [C-103] Sub. Workover (C-103R)

CONDITIONS

Created By	Condition	Condition Date
mkuehling	MIT required prior to 8/13/2029	10/25/2024