

Santa Fe Main Office

Phone: (505) 476-3441 Fax: (55) 476-3462

General Information

Phone: (505) 629-6116

Online Phone Directory Visit:

<https://www.emnrd.nm.gov/ocd/contact-us/>State of New Mexico
Energy, Minerals and Natural ResourcesForm C-103
Revised July 18, 2013OIL CONSERVATION DIVISION
1220 South St. Francis Dr.
Santa Fe, NM 87505WELL API NO.
30-025-038105. Indicate Type of Lease
STATE ☒ FEE ☐

6. State Oil & Gas Lease No.

7. Lease Name or Unit Agreement Name

Lovington San Andres Unit

8. Well Number 47

9. OGRID Number
24133310. Pool name or Wildcat
Lovington Grayburg SA

SUNDRY NOTICES AND REPORTS ON WELLS

(DO NOT USE THIS FORM FOR PROPOSALS TO DRILL OR TO DEEPEN OR PLUG BACK TO A DIFFERENT RESERVOIR. USE "APPLICATION FOR PERMIT" (FORM C-101) FOR SUCH PROPOSALS.)

1. Type of Well: Oil Well ☐ Gas Well ☒ Other2. Name of Operator
Chevron Midcontinent, L.P3. Address of Operator
6301 Deauville Blvd, Midland TX, 79706

4. Well Location

Unit Letter K: 1980 feet from the South line and 1980 feet from the West line
Section 1 Township 17 S Range 36E NMPM County Lea11. Elevation (Show whether DR, RKB, RT, GR, etc.)
3836' GR

12. Check Appropriate Box to Indicate Nature of Notice, Report or Other Data

NOTICE OF INTENTION TO:

PERFORM REMEDIAL WORK ☐ PLUG AND ABANDON ☐
TEMPORARILY ABANDON ☐ CHANGE PLANS ☐
PULL OR ALTER CASING ☐ MULTIPLE COMPL ☐
DOWNHOLE COMMINGLE ☐
CLOSED-LOOP SYSTEM ☐
OTHER: ☐

SUBSEQUENT REPORT OF:

REMEDIAL WORK ☐ ALTERING CASING ☐
COMMENCE DRILLING OPNS. ☐ P AND A ☒
CASING/CEMENT JOB ☐OTHER: ☐

13. Describe proposed or completed operations. (Clearly state all pertinent details, and give pertinent dates, including estimated date of starting any proposed work). SEE RULE 19.15.7.14 NMAC. For Multiple Completions: Attach wellbore diagram of proposed completion or recompletion.

See attached plugging report and as plugged wellbore diagram

Spud Date:

6/3/1939

Rig Release Date:

I hereby certify that the information above is true and complete to the best of my knowledge and belief.

SIGNATURE Zachary Hopkins TITLE Abandonment Engineer DATE 9/13/24Type or print name Zach Hopkins E-mail address: zachary.hopkins@chevron.com PHONE: 432-425-8107
For State Use OnlyAPPROVED BY: _____ TITLE _____ DATE _____
Conditions of Approval (if any): _____

CURRENT
WELLBORE DIAGRAM
LSAU 47

Created: 8/25/2008
Updated: 9/9/2008
Lease: Lovington San Andres
Surf Location: 1980' FSL & 1980' FWL
BH Location: _____
County: Lea
Current Status: Active Water Injector
State: NM

By: da Silva
By: CAYN
CHEVNO: FA4957
KB: _____
DF: 3836'
GL: _____

Field: Lovington
Well No.: 47
Twp/Rng: 17S 36E
Unit Ltr & Section: K/1
API: 30-025-03810
Original Spud Date: 6/3/1939
Original Compl. Date: _____
Formation: Grayburg/San Andres

Surface Csg.

Size: 13"
Wt.: 50#/ft
Set @: 297'
Sxs cmt: 250
Circ: YES
TOC: _____
Hole Size: 17-1/2"

Intermediate Csg. ("Salt String")

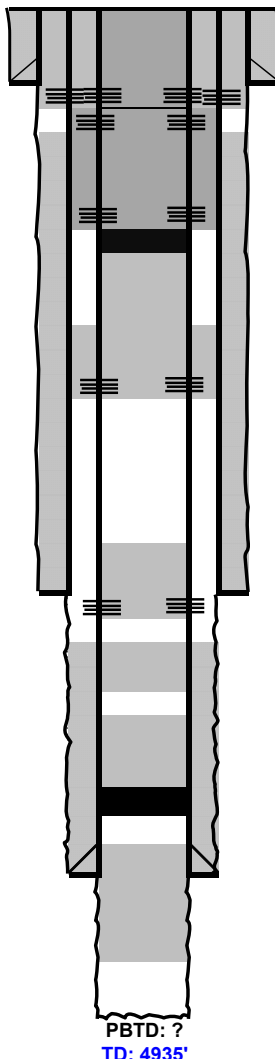
Size: 8-5/8"
Wt.: 32#/ft
Set @: 3104'
Sxs Cmt: 500
Circ: NO
TOC: 628' **CALC**
Hole Size: 11"

Production Csg. ("Oil String")

Size: 5-1/2"
Wt.: 17#
Set @: 4620'
Sxs Cmt: 150
Circ: _____
TOC: 3545' **CALC**
Hole Size: 7-7/8"

Open Hole: 4620-4944'
Size: _____

Rustler	1,936	
Salt	2,028	
Tansil	2,870	
Seven Rivers	3,259	
Queen	3,876	
Grayburg	4,327	
San Andres	4,550	
TD	4,944	



1/10/2023: Perf @ 350', Circ all strings to surface w/ 150 sx Class C

7/16/24: Squeeze 80 oz of Nano seal. Well passing Bubble test
5/28/24: Spot 40 sx Class C f/ 330'- 0'

5/23/24: Perforate casing with gator tool at 1,431' & 411'
Suicide circulate 228 sx Class C f/ 1,430' - 250' (PT, tag at 330')
1/28/24: Drill out surface plug; set CIBP @ 1,500'
1/9/2023: Spot 27 sx Class C f/ 1,887' - 1,613'

1/6/2023: Perf @ 2,028' (establish circ up int csg annulus)
Circ 47 sx Class C f/ 2,028' (failed PT, no tag)
Circ 100 sx Class C f/ 2,028' (failed PT, no tag)
1/9/2023: Circ 47 sx Class C f/ 2,028' (passed PT, tagged @ 1,887')

1/5/2023: Perf @ 3,104' (unable to establish injection)
Spot 27 sx Class C f/ 3,204' - 2,931'

1/5/2023: Spot 27 sx Class C f/ 3,876' - 3,603'

1/5/2023: Tag packer on Coil Tbg (4,455' CTM)
Spot 27 sx Class C f/ 4,455' - 4,182' (Tagged @ 4,152')

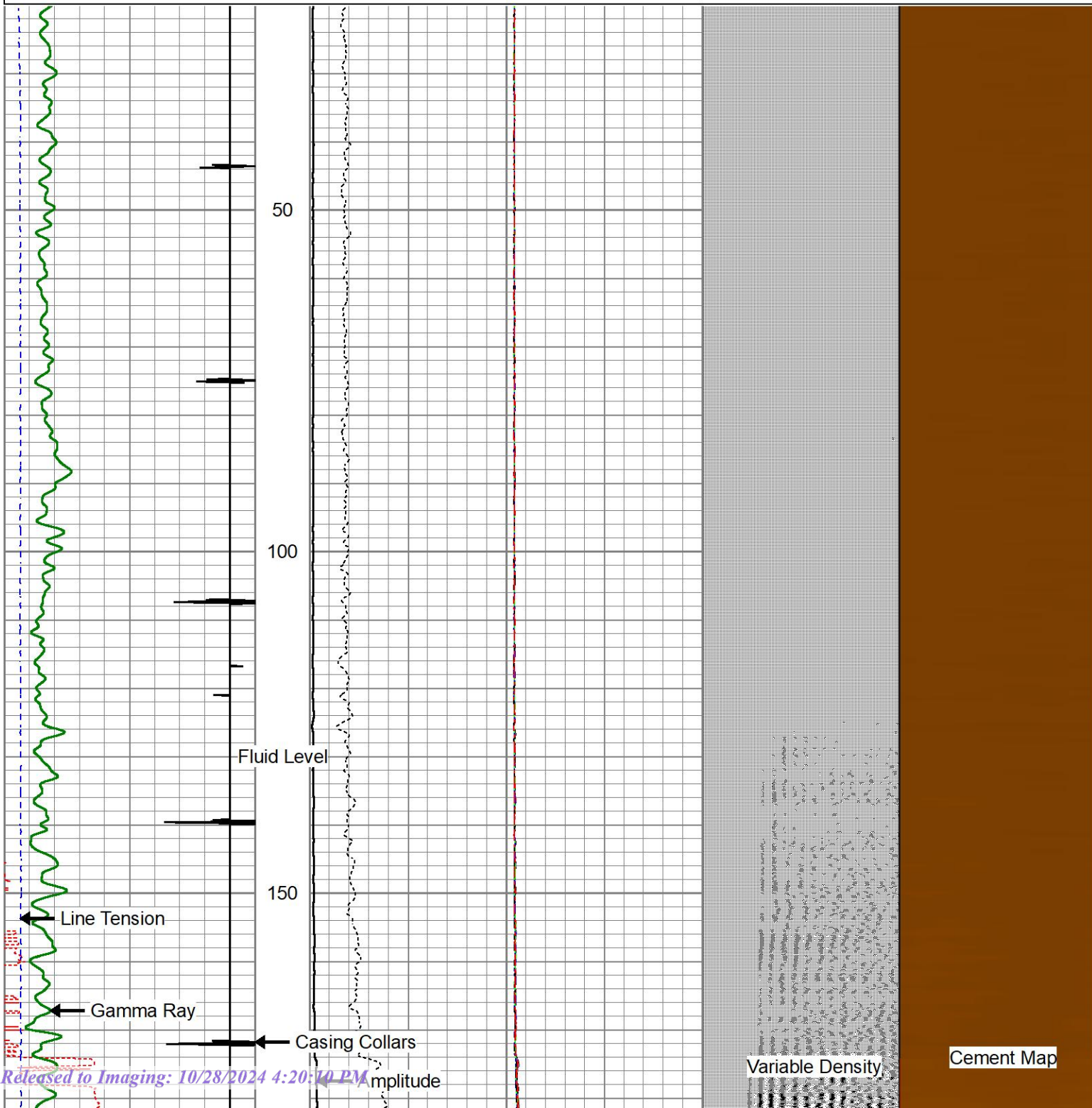
12/3/2022: Release on/off tool and LD production tbg
Production packer left at 4,467'
10/12/22: Bullhead 40 sx Class C below packer
Est TOC @ 4,520'

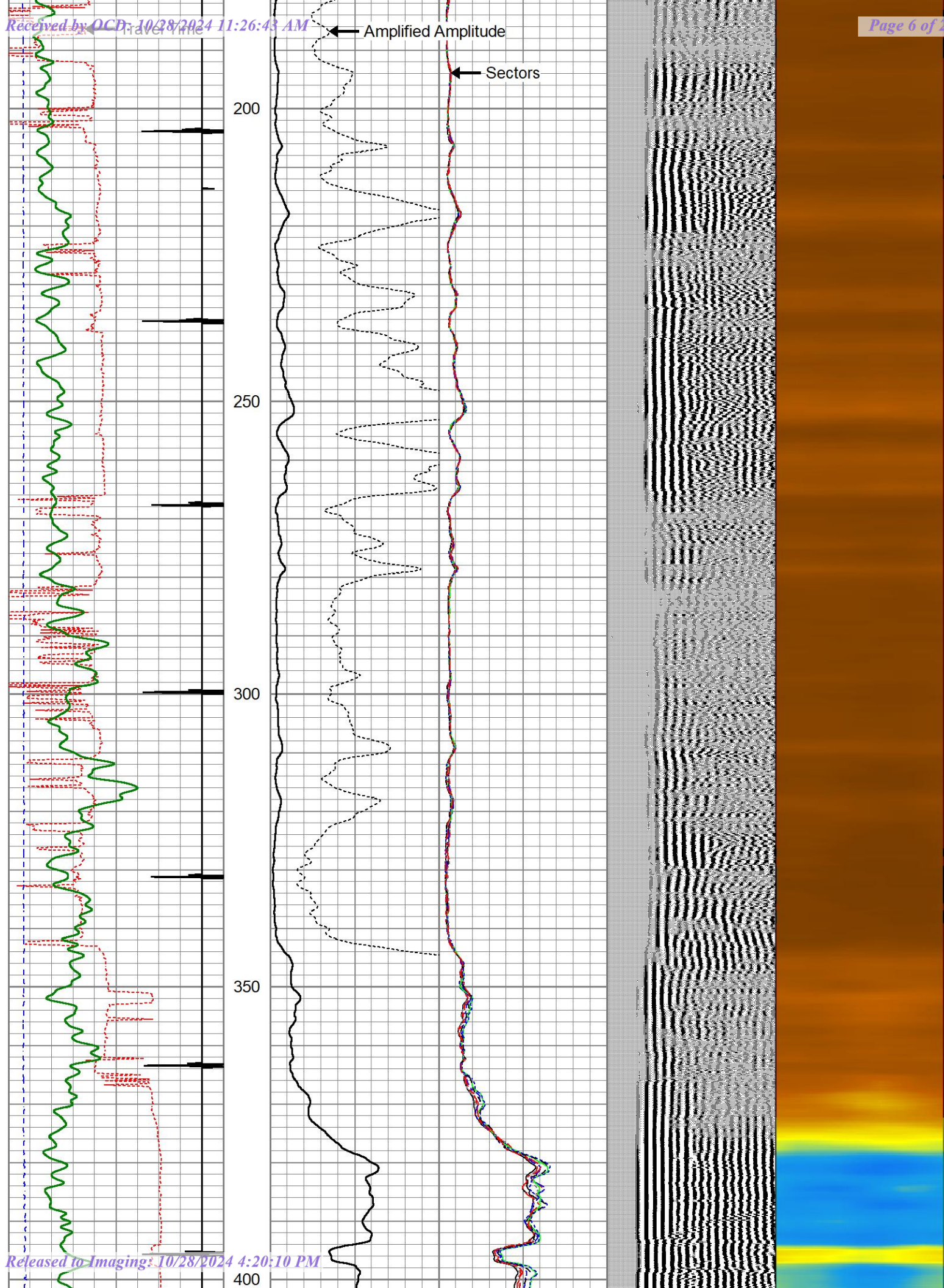


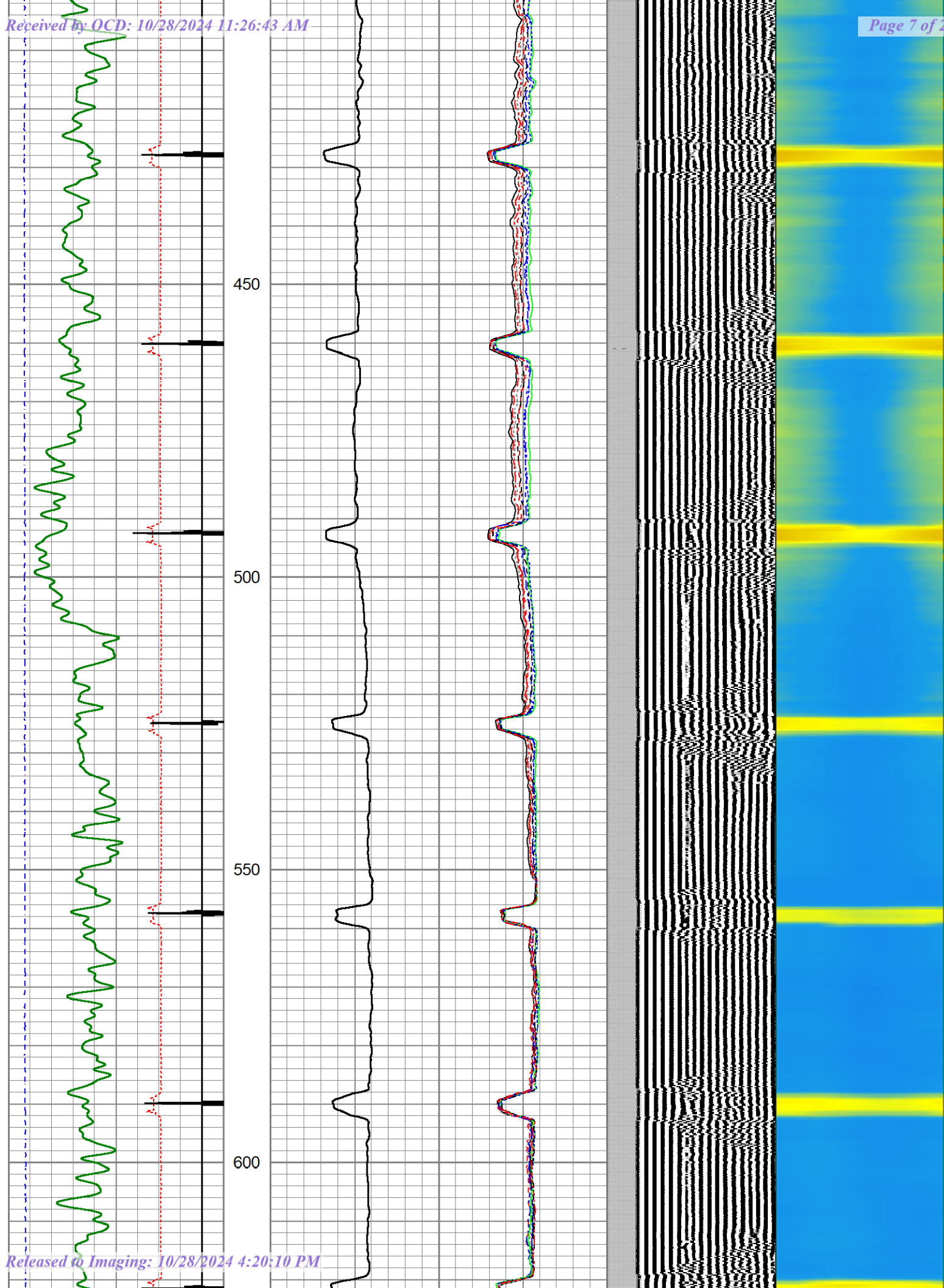
EMC Ops Summary - External (2)

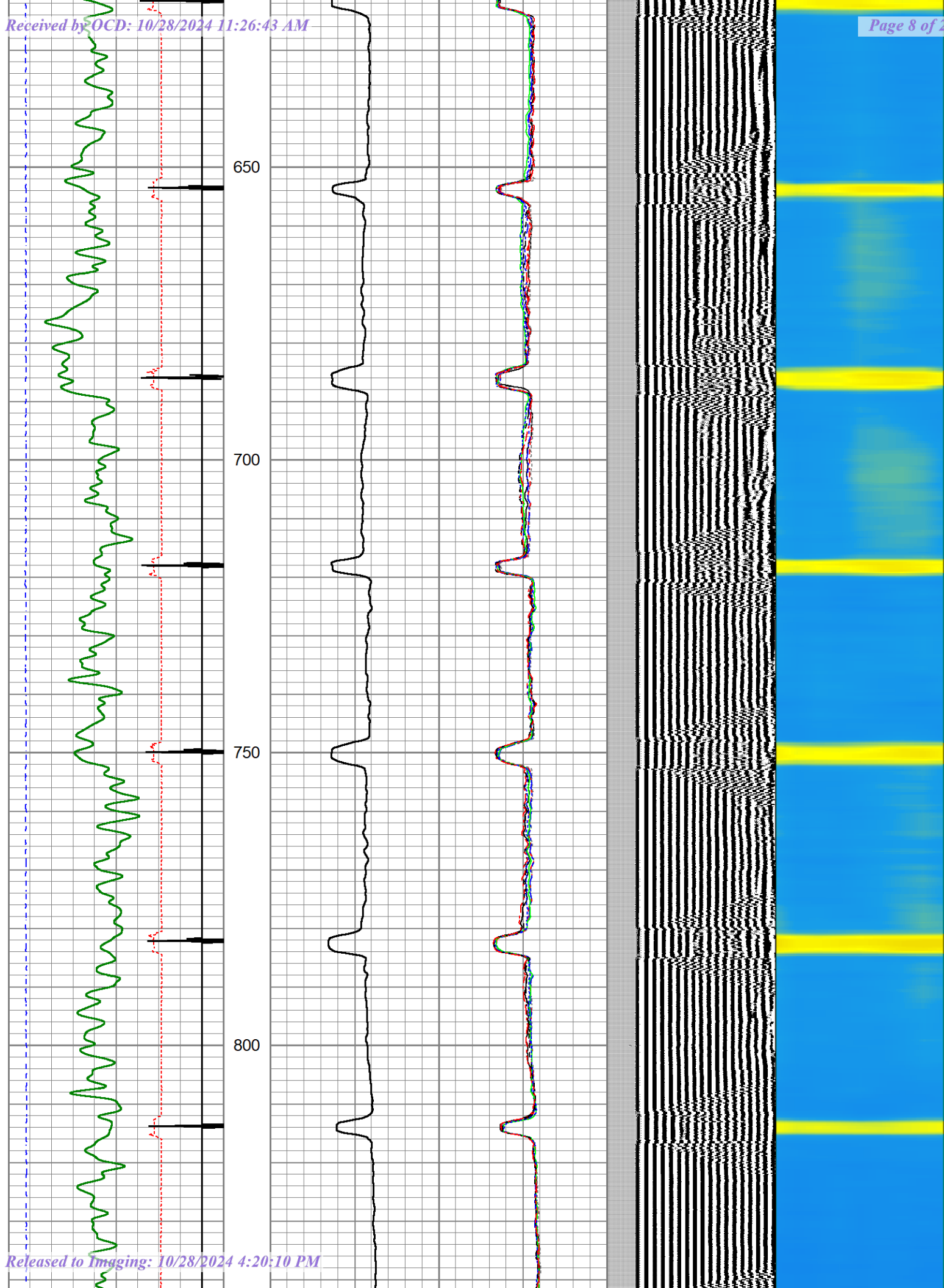
Well Name LOVINGTON SAN ANDRES UNIT 047		Field Name Lovington		Lease Lovington San Andres Unit		Area Central Permian	
Business Unit Mid-Continent		County/ Parish Lea		Global Metrics Region Lower 48		Surface UWI 3002503810	
Basic Well Data							
Current RKB Elevation		Original RKB Elevation (ft) 3,836.00		Latitude (°) 32° 51' 36" N		Longitude (°) 103° 18' 36" W	
Phases							
Actual Start Date		Actual End Date		Phase 1	Phase 2	Time Log Hrs (hr)	Percent Problem Time (%)
9/12/2022 07:00		9/12/2022 12:00		PREP	FAC	5.00	
12/1/2022 07:00		12/1/2022 09:00		MOB	MOVEON		
12/2/2022 12:00		12/2/2022 15:00		ABAN	TBGPULL	1.00	
1/5/2023 09:00		1/10/2023 11:00		ABAN	CMTPLUG	34.75	
6/4/2024 12:00		9/9/2024 12:00		REST	FAC	32.00	
11/29/2023 07:00		12/1/2023 09:30		ABAN	PLGMILL	73.00	4.11
Start Date		Summary					
9/12/2022		Reivew JSA and SIF, check well for pressure, 0 PSI on all 3 strings. crew hand dug risers and installed new risers. Surface and Intermedaite risers were T'ed due to plugs, production had new risers installed. Crew back filled and attempted hot bolting. Removed flow line and moved to next well.					
10/13/2022		Held safety meeting with crew. R/U cement truck. PT surface lines and equipment to 1500 psi. Test was good. Performed injection test. 2.5 bpm at 1100 psi. PT BS to 500 psi for 15 mins. Test was good. Mixed and pumped 40 sks of 14.8 ppg Class C cement and displaced with 18.5 bbls. ETOC 4520'					
12/2/2022		Held safety meeting with crew. spot in Rig check pressure surf. 0psi, inter. 10psi, TBG 80psi, shut down for wind					
12/3/2022		Held safety meeting with crew. spot in Rig check pressure surf. 0psi, inter. 10psi, TBG 80psi, shut down for wind					
12/5/2022		RU WSU // NU BOP // LD 2 3/8 IPC TBG // Conduct Bubble Test // ND BOP // Move To LSAU 48					
1/5/2023		Held safety meeting with crew. MOB unit with porper journey managment to LSAU 47. R/U CT and all supporting equip. PT BOP. PT well bore. TIH and tagged at 4455'. TOH. WOC. PT. Put on TCP (TP) guns and TIH to 3154'. Perf at 3154'. Unable to established injection. Pressured up to 700 psi and held. TIH and tagged TOC at 4152'. Spotted 17 bbls MLF. Spotted 27 sks of Class C from 3876' to 3603'. TOH to 3204'. Spotted 27 sks of Class C from 3204' to 2931'. TOH to surface. Shut in well secured location.					
1/6/2023		Held safety meeting with crew. PT CMT plug to 500 psi. Put on TCP (TP) guns. TIH to 2028'. Perf at 2028'. Established circulation with 3 bpm at 120 psi. Circ clean. Tagged TOC at 2994'. Spotted MLF up to 2028. TOH. Pumped from surface 47 sks of Class C. ETOC 1826. WOC. Attempt to PT, began circulating. TIH and attempt to tag. No tag. Kerry Fortner approved 100 sk plug, 429' inside and out of porduction CSG. Pump from surface 100 sks of Class C. Displaced with 37 bbls. ETOC 1599'. Got CMT returns to surface at the end of displacement. Contacted engineer, decided to circulate out all CMT. Pumped 115 bbls of Fresh water. Pumped 115 bbls of 10 ppg brine. Shut in the well and Secure					
1/9/2023		Held safety meeting with crew. Pumped from surface 47 sks of Class C cement from 2028' to 1826'. WOC. TIH and tagged TOC at 1887'. Upgraded with 27 sks of Class C to 1614'. TOH. TIH with perf guns. Shoot at 350'. Attempt to circ through surface. Getting .25 bpm.					
1/10/2023		Held safety meeting with crew. RIH and perforated at 350' with DP TCP. TOH. CC with 35 bbls of 10 ppg brine water. Pumped 150 sks of Class C down the production CSG and up the both annulus to surface. CMT to surface on all 3 strings. RDMO CTU.					
8/10/2023		R/U 300-psi, check pressure, prod 1-psi failed bubble test, intermediate 0-psi, passed bubble test, surface 0-psi, passed bubble test. put on proper PPE for triple SCAV, pump with hose 10-gallons of triple SCAV in production casing only, total 10-gallons of triple SCAV *****use caution when cutting well head off *****					
8/18/2023		Check well. Test Well					
9/16/2023		No gas on location. No gas in well all strings. All string bubbling Failed					
11/25/2023		N/U Screw on flange and 7 1/6 5K Frac Vavle.					
11/29/2023		Inspect equipment, RU equipment, Wait on crane, RU crane, NU spool, NU BOP, MU lubricator & injection head,					
11/30/2023		Change out lubricator, Disp. CT, Test BOP, Test CT connector, MU 2.88 power motor, Drill out broke through @355', RIH tag TOC @1511', CC 40 bbl, POOH, Pressure test, RD, Debrief.					
12/1/2023		ND BOP, Load equipment,					
12/2/2023		N/D 7 1/6 5K Frac Vavle.					
12/23/2023		JSA SWC SIF Bubble test well had 30 PSI and Gas Readings 0 PSI and no gas reading on Intermediate and Surface Casing. MIRU Crane Wireline Unit and PUMP Truck. RIH with 2.75 CBL Toll tagged 1511'. Logged up with 0 PSI on Casing. RIH to 1511' Pressured up Casing to 500 PSI had water come around wellhead POOH. RDMO.					
12/28/2023		MIRU NINE EL Wireline unit.					
1/28/2024		Held S/M, Sniff well, MIRU NINE Energy EL wireline unit. Check PSI. SIICP @ 15 PSI. SISCP @ 15 PSI. Hook up hose from surface casing to return tank. WSI N/D 7-1/16 B-1 top flange. N/U 7-5 Shooting flange. RIH With CIBP & Set @ 1,500'. H2o Level @ 1'. POOH, RDMO NINE EL wireline unit. R/U WSI Tester to 9-5/8" casing & Test to 500 PSI for 15 MIN. Slight bleed off, Larken flange was leaking some also. Bleed off to return tank. R/D 7-1/16"-5K Shooting flange & N/U 7-1/16" B-1 flange. Bubble test. Production casing bubbling with gas readings. 20 % Co2 & 6 % LEL. Left neddle valve open on each string to vent. Per Engineer. Debrief Crew. EOT.					
2/10/2024		Bubble test. All valves were open on arrival. Sniff well. Production casing bubbling with gas readings. 5 % Co2 & 4 % LEL Surface csg passed. Intermediate passed.					
5/22/2024		Move from Twin lakes 16 to LASU 47 Held safety meeting, check pressure. (0 psi)					
5/23/2024		Held safety meeting, check pressure. (0 psi) ND WH NU BOP TIH Perf at 1430', 410' TOH TIH W/PKR set at 440' circulate clean laydown excess tubing set PKR at 440'					
5/24/2024		Held safety meeting, check pressure. (0 psi) MIRU Petroplex cementers pump 228 sacks class C cement w/ MAGOX at 1430'-250' TOH WOC					
5/28/2024		Held safety meeting, check pressure. (0 psi) TIH tag TOC at 330' Pump 40 sacks C cement 1.32 yeild 14.8 PPG at 330'-0' TOH WOC TAG TOC at 0' RD					
6/4/2024		Review JSA, check well for pressure, blind sweep and remove anchors, excavate and found rock, broke out rock to 3 feet and checked casing head, got readings from intermediate, checked well again, panelled well.					
7/12/2024		Reviewed JSA, check well for readings and bubble test, cut well head off, welded swedge, hydro tested, hydro test failed casing underground leaking, paneled bell hole off.					
7/16/2024		Held Safety Meeting. Well Open Venting upon Arrival. Meter top of 2" Ball Valve. No Gas Readings Present. Flow Check . R/U 300 Psi Pumping Equip. Top off Well with H2O. Attempt Pressure Test. Pumping Away @ 0 Psi. Bubbles Present. Pull H2O From Well with Vacume Pump. Pour in 1 Gallon Nano Seal. Start Hesitation Squeeze Operations. Total Nano Seal Pumped today 72 oz . Build up Final Shut in Pressure 1000 Psi. Secure Well.					
7/17/2024		Held Safety Meeting. Well had 0 psi. pumped up to 1000 psi. Hesitation Squeeze Operations. Total Nano Seal Pumped today 8 oz . Build up Final Shut in Pressure 1000 Psi. Secure Well.					
9/9/2024		Tailgate meeting, check well for readings, blind sweep location, removed anchors, welded pole, restored location and well.					

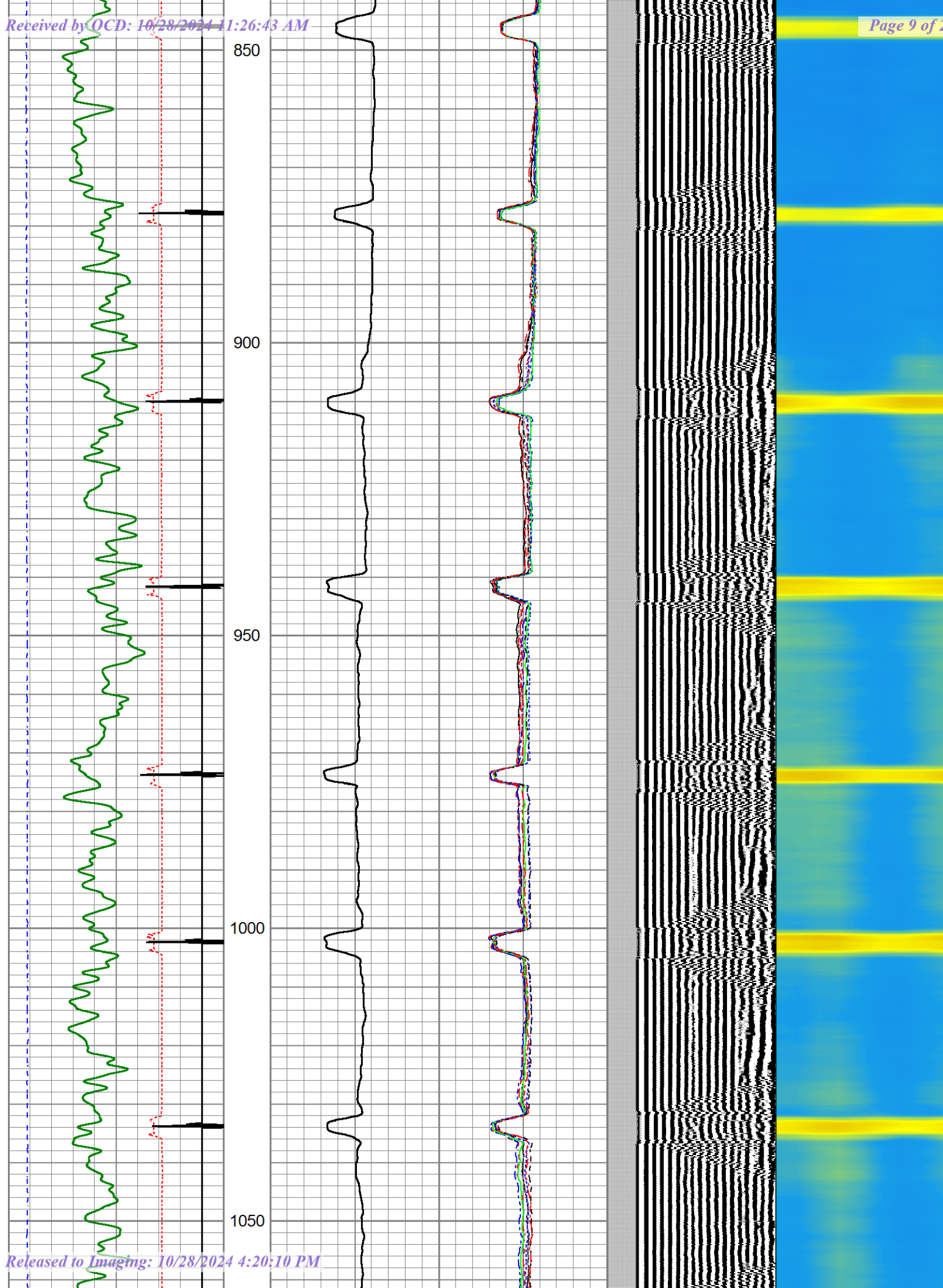
400	Travel Time (usec)	200	0	Amplitude (mV)	100	-5	Sector 1	150	Variable Density	1	Cement Map	8
9	CCL\$1	-1		Amplified Amplitude		-5	Sector 2	150	200	(usec)	1200	
0	Gamma Ray (GAPI)	150	0	(mV)	10	-5	Sector 3	150				
0	Line Tension (lb)	5000				-5	Sector 4	150				
						-5	Sector 5	150				
						-5	Sector 6	150				
						-5	Sector 7	150				
						-5	Sector 8	150				

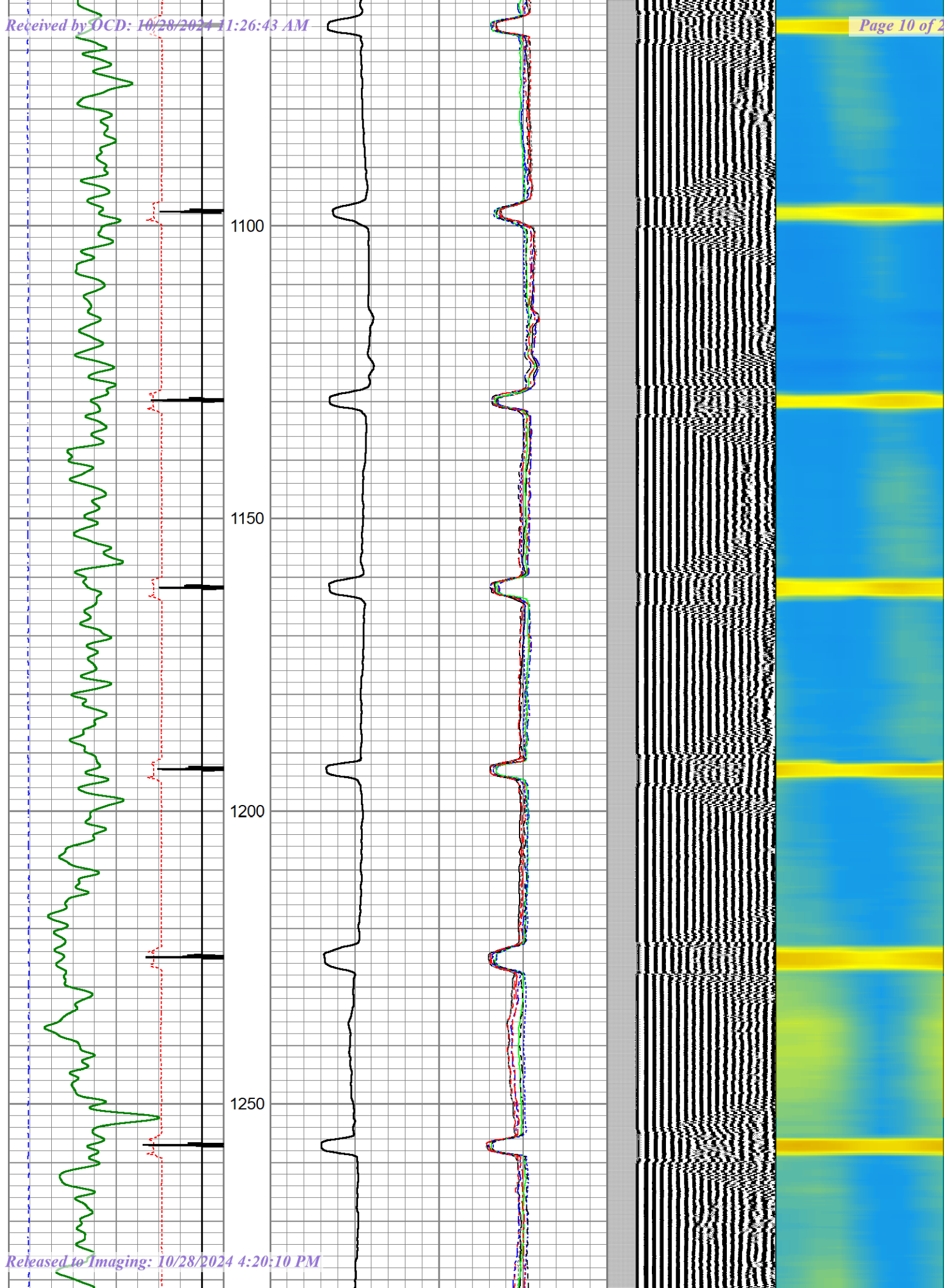


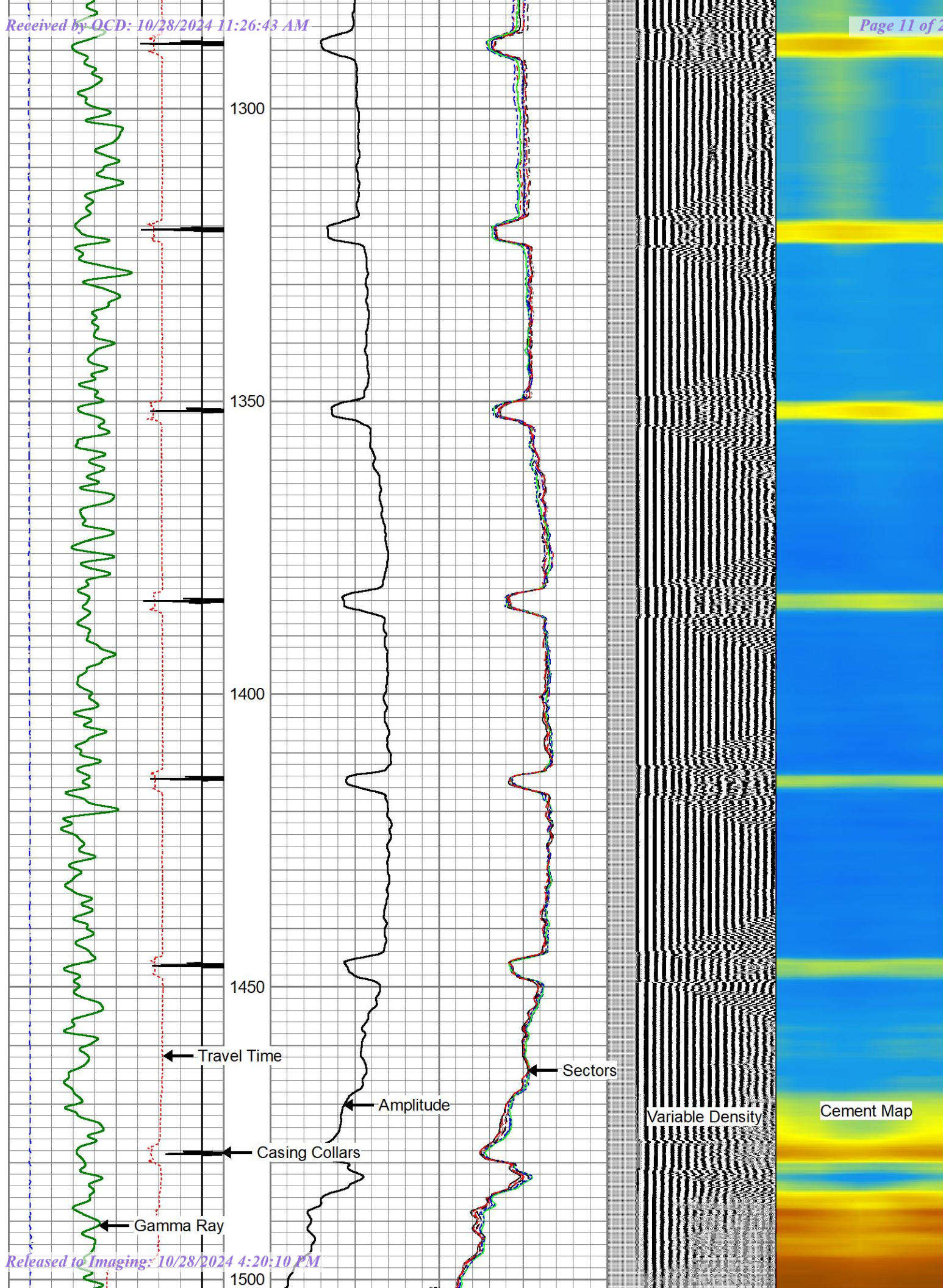


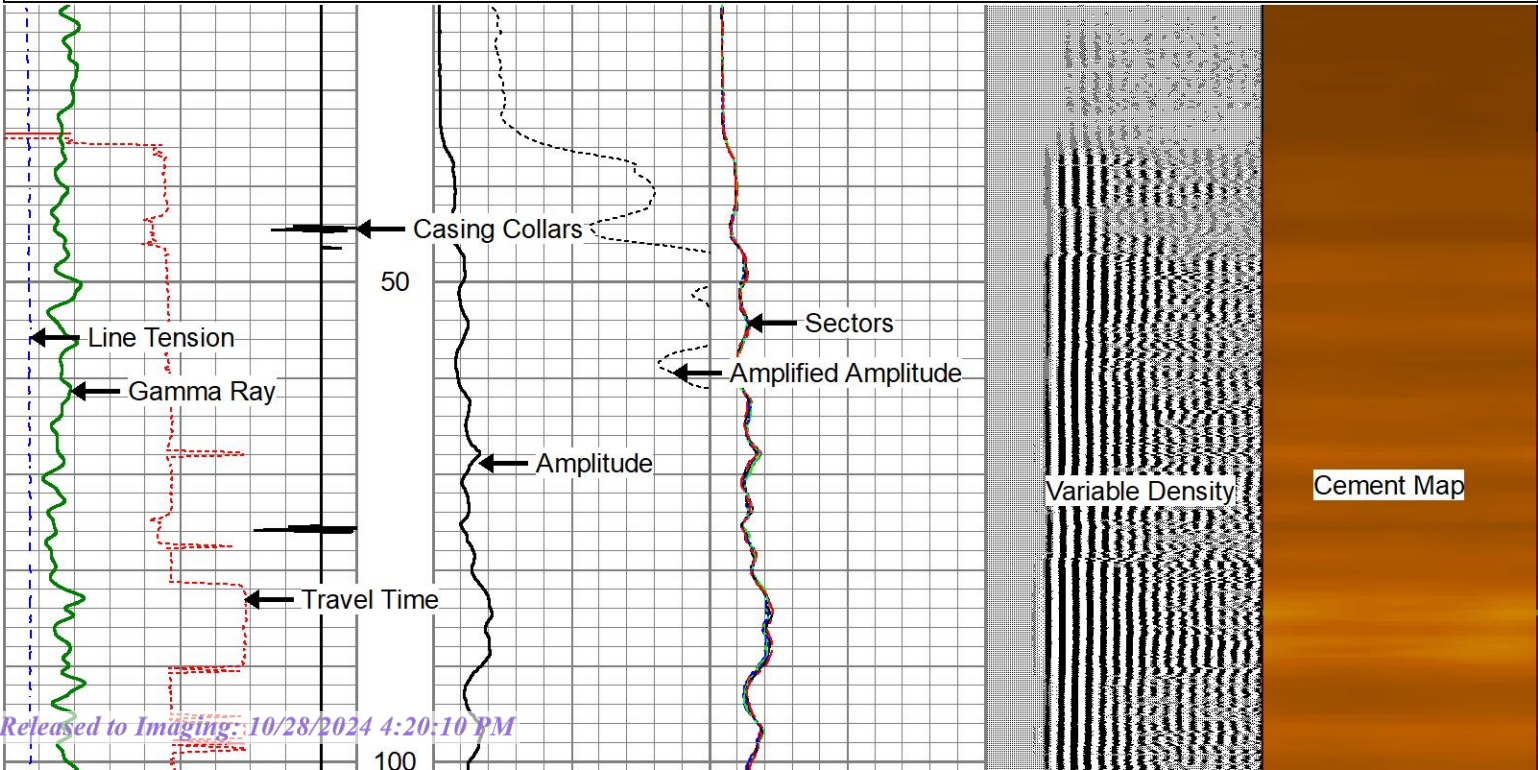
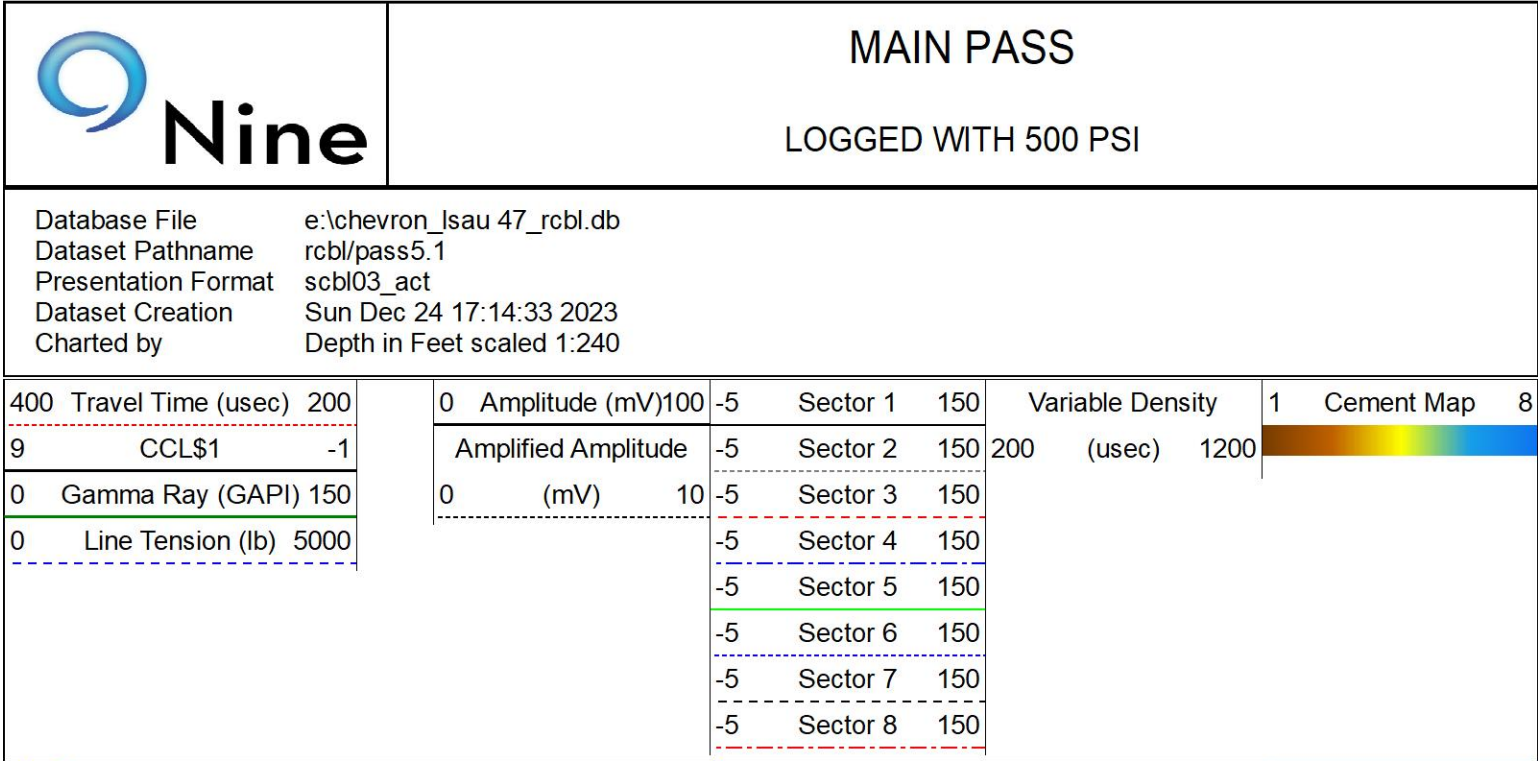
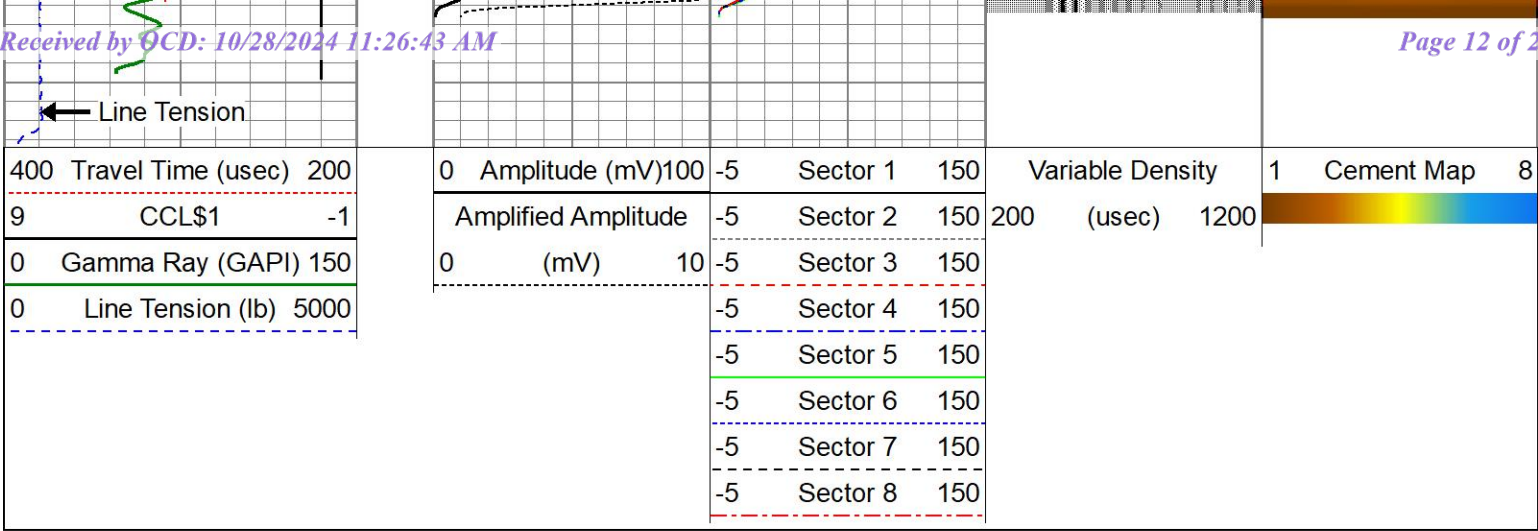


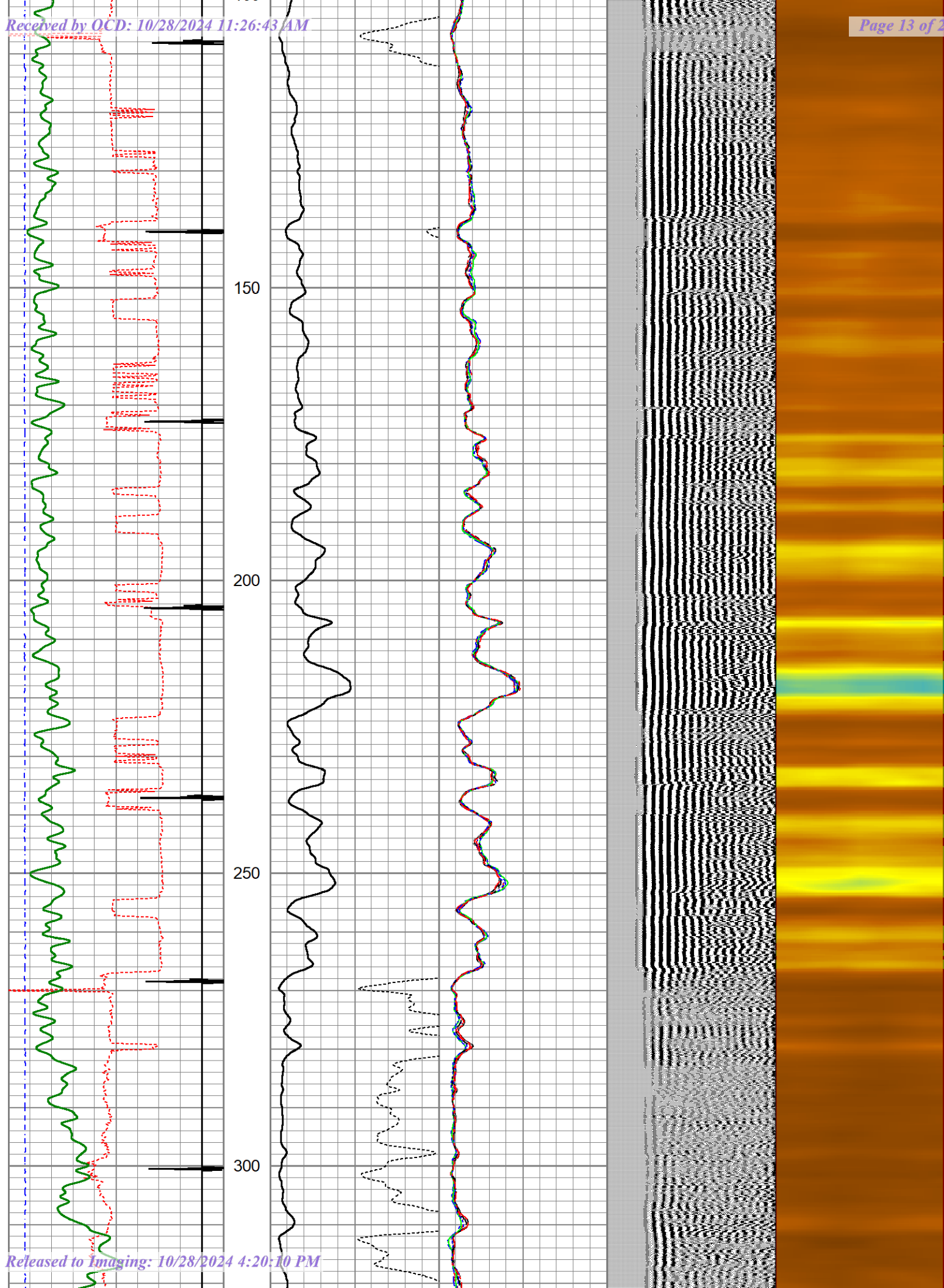


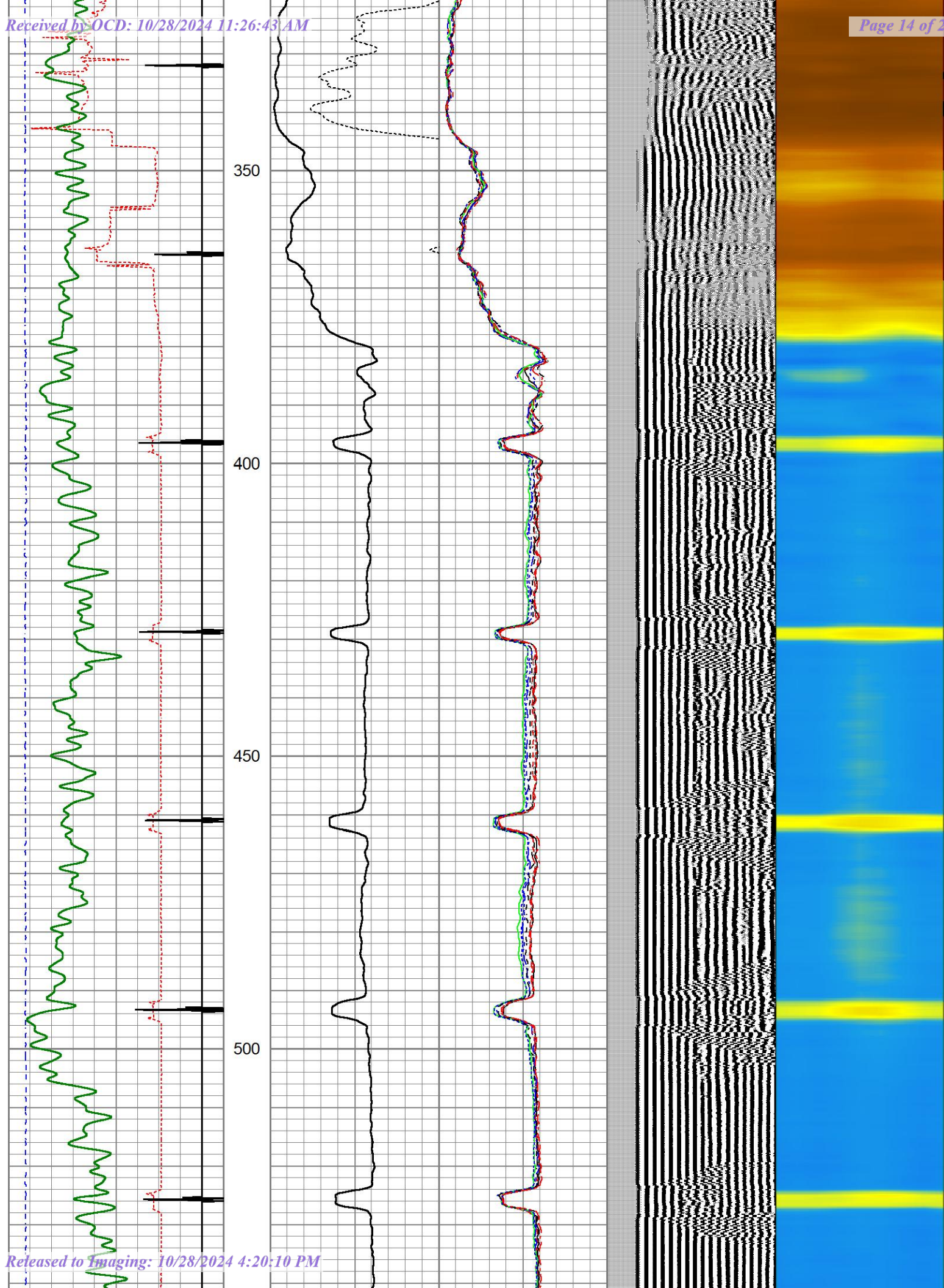


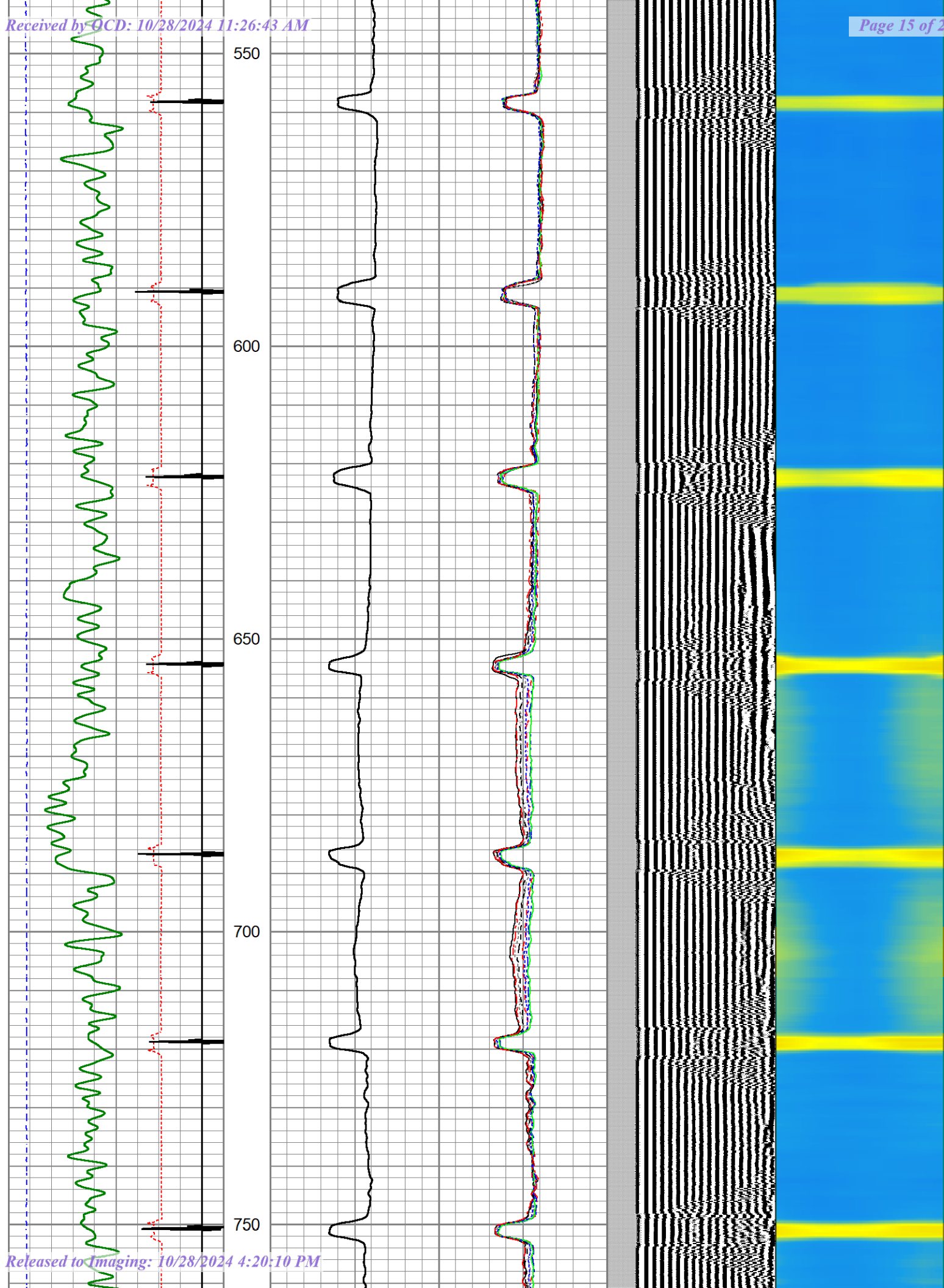


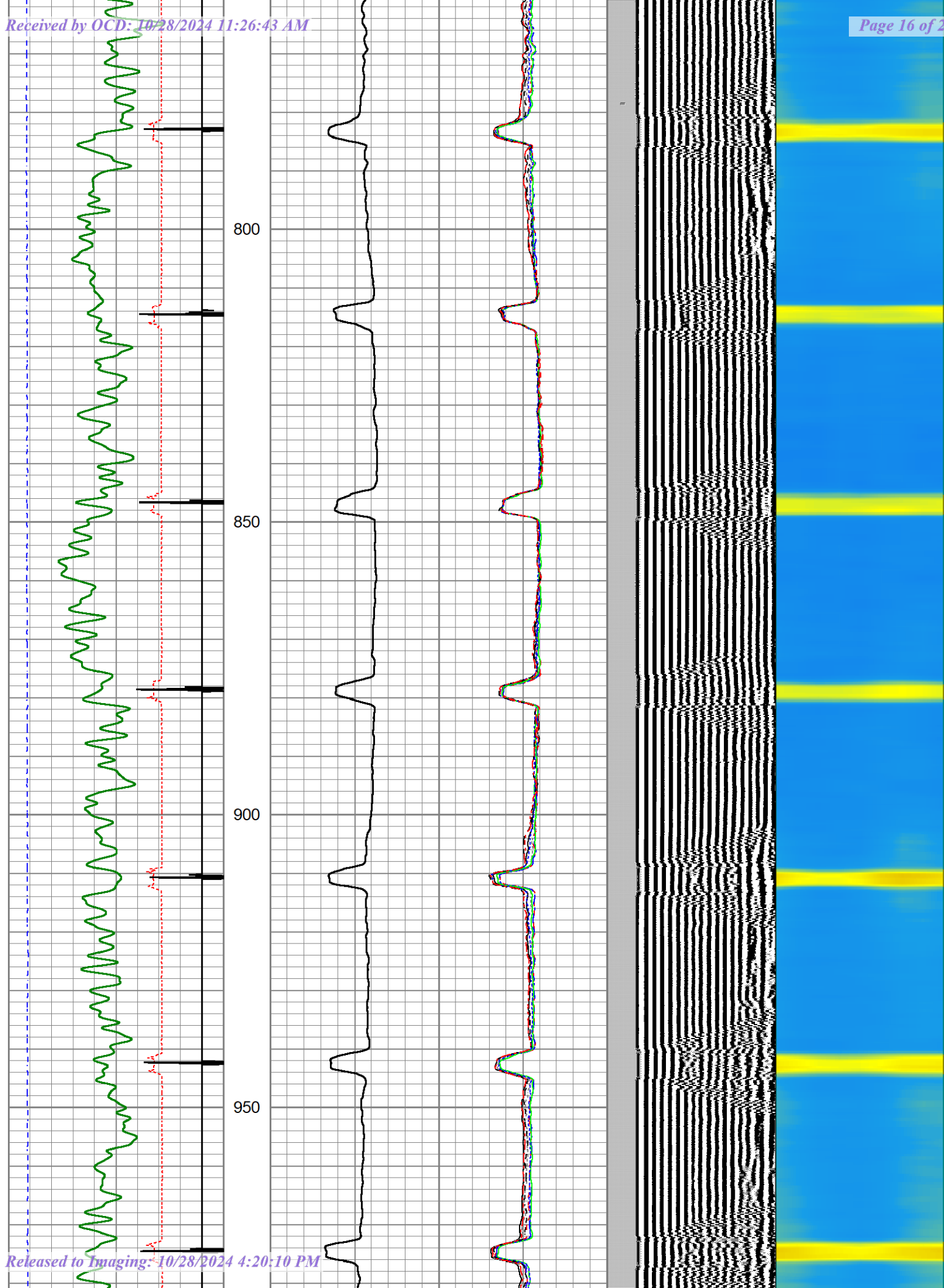


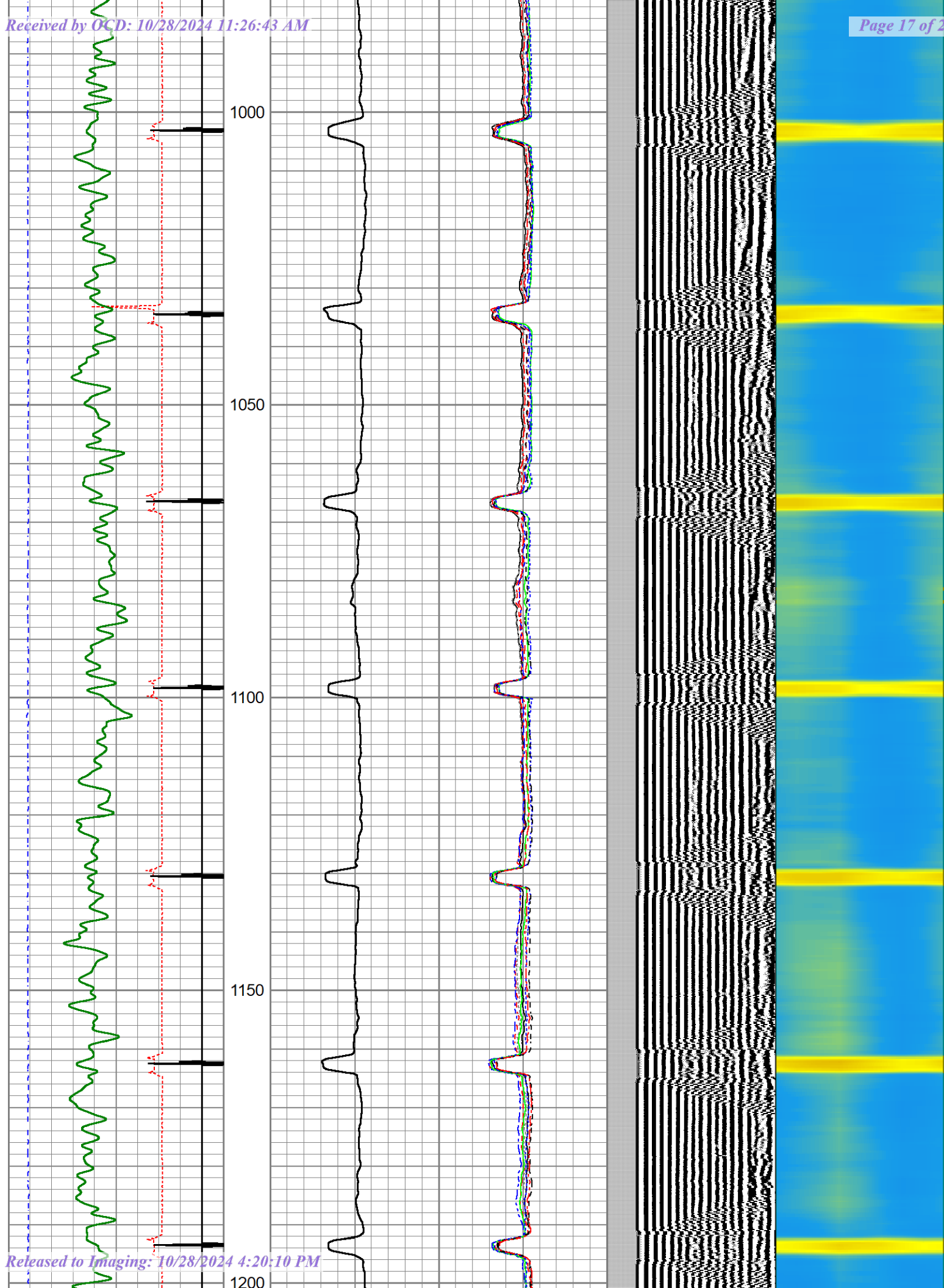


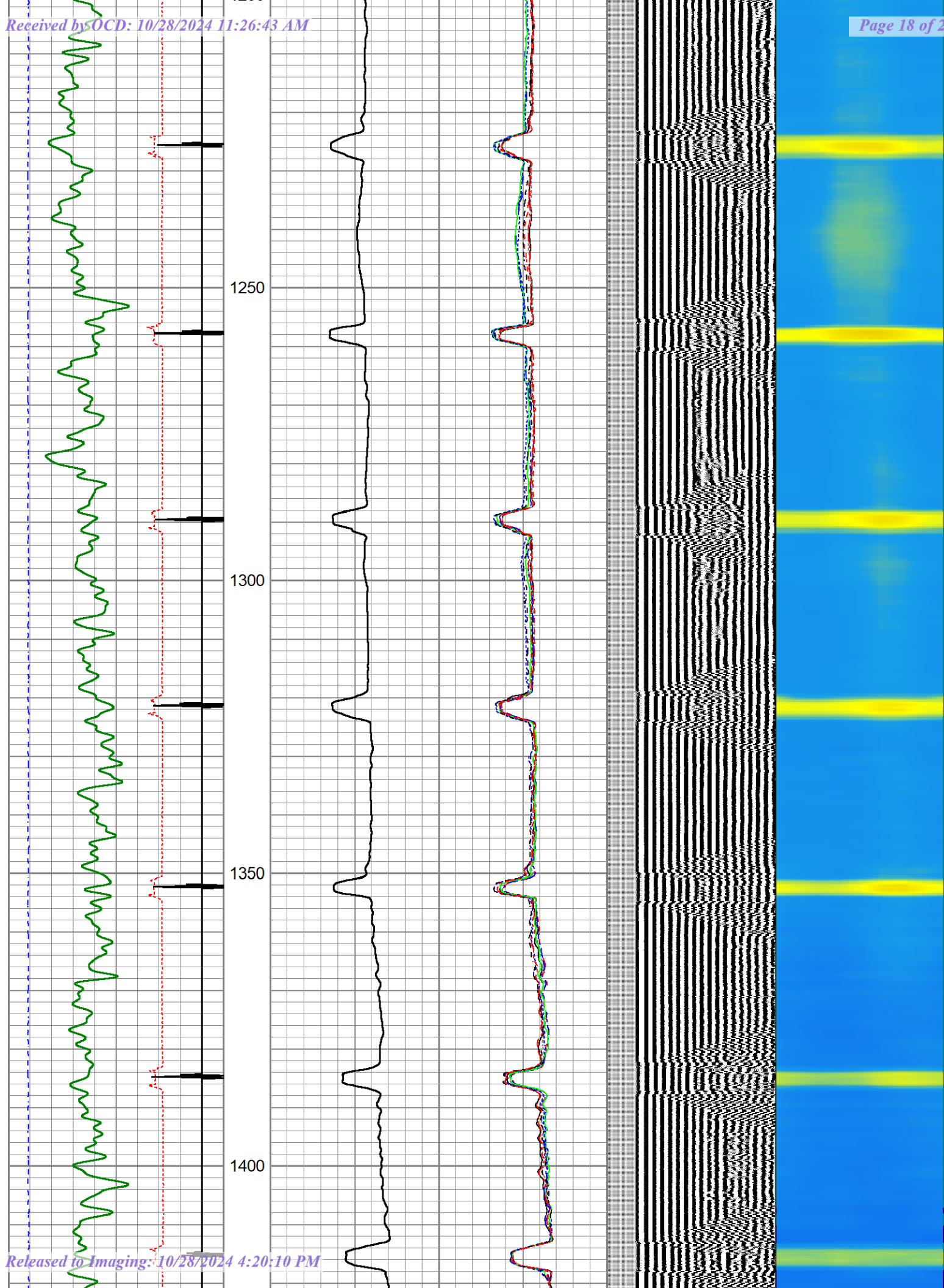


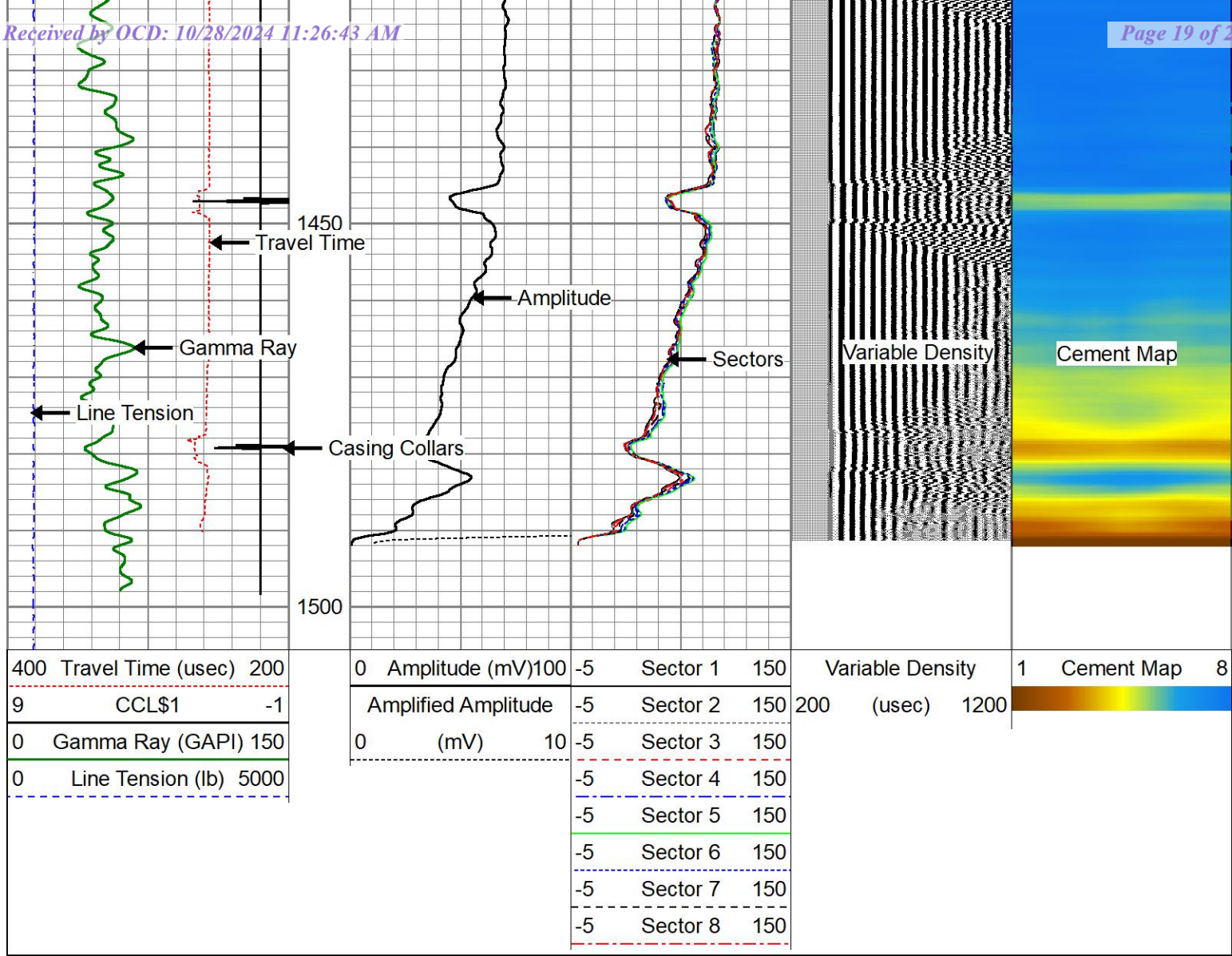












Sensor	Offset (ft)	Schematic	Description	Length (ft)	O.D. (in)	Weight (lb)
mSec_Count	26.32		Cable_Heads-1_44Titan_CableHead	1.03	1.44	3.60
RBT_Status	26.32		1 7/16" Titan Cable Head (Max Tension 42,000 lbf) 1" Fish Neck			
Error_Ct	26.32		CENT-Probe275 2.75" Centralizer	2.88	2.75	20.00
RBT_HV	22.41					
RBT_Temp	17.16		RBT8-HTRCB-275T (1302-125) Probe 2.75" High Temperature RADII 8 Sector Bond Tool w/ external temperature	11.65	2.75	
RBT_ACCZ	15.01					

Calibration Report						
Database File	E:\chevron_Isau 47_rcbl.db					
Dataset Pathname	rcbl/pass2					
Dataset Creation	Sat Dec 23 11:39:08 2023					
Gamma Ray Calibration Report						
Type / Serial:			GCT275-0001 / FW1912-002			
SHOP CALIBRATION			Fri Nov 3 16:23:53 2023			
	Counts/Sec.	Gain	Offset	Jig	Units	
Background	43.0				cps	
Calibrator	249.8	0.9819			cps	
					GAPI/cps	
PRIMARY VERIFICATION			Thu Oct 05 18:25:58 2023			
Background	44.6				cps	
Calibrator	243.4				cps	
Difference				198.8	GAPI	
BEFORE SURVEY VERIFICATION						
Background	0.0				cps	
Calibrator	0.0				cps	

AFTER SURVEY VERIFICATION

Background	0.0		cps
Calibrator	0.0		cps
Difference		0.0	GAPI

Segmented Cement Bond Log Calibration Report

Serial Number:	1302-125
Tool Model:	HTRCB-275T
Calibration Casing Diameter:	5.500 in
Calibration Depth:	236.717 ft

Master Calibration, performed Sat Dec 23 11:02:06 2023:

	Raw (v)		Calibrated (mv)		Results	
	Zero	Cal	Zero	Cal	Gain	Offset
3'	0.007	0.772	1.000	71.921	92.649	0.370
CAL	0.008	0.759				
5'	0.006	0.620	1.000	71.921	115.483	0.322
SUM						
S1	0.008	0.766	0.000	100.000	131.823	-1.017
S2	0.008	0.763	0.000	100.000	132.304	-0.998
S3	0.008	0.760	0.000	100.000	132.952	-1.078
S4	0.008	0.749	0.000	100.000	134.990	-1.073
S5	0.009	0.748	0.000	100.000	135.275	-1.172
S6	0.008	0.756	0.000	100.000	133.599	-1.027
S7	0.008	0.757	0.000	100.000	133.477	-1.088
S8	0.008	0.768	0.000	100.000	131.533	-1.020

Internal Reference Calibration, performed Sat Dec 23 11:00:16 2023:

	Raw (v)		Calibrated (v)		Results	
	Zero	Cal	Zero	Cal	Gain	Offset
CAL	0.000	0.000	0.008	0.759	1.000	0.000

Air Zero Calibration, performed Sat Dec 23 11:05:09 2023:

	Raw (v)		Calibrated (v)		Results	
	Zero		Zero			Offset
3'	0.009		0.000			-0.002
5'	0.010		0.000			-0.004
SUM						
S1	0.009		0.000			-0.001
S2	0.008		0.000			-0.001
S3	0.008		0.000			-0.000
S4	0.009		0.000			-0.001
S5	0.008		0.000			0.000
S6	0.009		0.000			-0.001
S7	0.009		0.000			-0.000
S8	0.009		0.000			-0.001

Inclinometer Calibration Report

Performed: (Not Performed)

	Low Read.	High Read.	Low Ref.	High Ref.	
X Accelerometer	0.00	1.00	0.00	1.00	gee
Y Accelerometer	0.00	1.00	0.00	1.00	gee
Z Accelerometer	0.00	1.00	0.00	1.00	gee

		Company	CHEVRON	
		Well	LOVINGTON SAN ANDRES UNIT #47	
		Field	LOVINGTON	
		County	LEA	
		State	NM	Country USA



EMC Ops Summary - External (2)

Well Name LOVINGTON SAN ANDRES UNIT 047		Field Name Lovington		Lease Lovington San Andres Unit		Area Central Permian	
Business Unit Mid-Continent		County/ Parish Lea		Global Metrics Region Lower 48		Surface UWI 3002503810	
Basic Well Data							
Current RKB Elevation		Original RKB Elevation (ft) 3,836.00		Latitude (°) 32° 51' 36" N		Longitude (°) 103° 18' 36" W	
Phases							
Actual Start Date		Actual End Date		Phase 1	Phase 2	Time Log Hrs (hr)	Percent Problem Time (%)
9/12/2022 07:00		9/12/2022 12:00		PREP	FAC	5.00	
12/1/2022 07:00		12/1/2022 09:00		MOB	MOVEON		
12/2/2022 12:00		12/2/2022 15:00		ABAN	TBGPULL	1.00	
1/5/2023 09:00		1/10/2023 11:00		ABAN	CMTPLUG	34.75	
6/4/2024 12:00		9/9/2024 12:00		REST	FAC	32.00	
11/29/2023 07:00		12/1/2023 09:30		ABAN	PLGMILL	73.00	4.11
Start Date		Summary					
9/12/2022		Reivew JSA and SIF, check well for pressure, 0 PSI on all 3 strings. crew hand dug risers and installed new risers. Surface and Intermedaite risers were T'ed due to plugs, production had new risers installed. Crew back filled and attempted hot bolting. Removed flow line and moved to next well.					
10/13/2022		Held safety meeting with crew. R/U cement truck. PT surface lines and equipment to 1500 psi. Test was good. Performed injection test. 2.5 bpm at 1100 psi. PT BS to 500 psi for 15 mins. Test was good. Mixed and pumped 40 sks of 14.8 ppg Class C cement and displaced with 18.5 bbls. ETOC 4520'					
12/2/2022		Held safety meeting with crew. spot in Rig check pressure surf. 0psi, inter. 10psi, TBG 80psi, shut down for wind					
12/3/2022		Held safety meeting with crew. spot in Rig check pressure surf. 0psi, inter. 10psi, TBG 80psi, shut down for wind					
12/5/2022		RU WSU // NU BOP // LD 2 3/8 IPC TBG // Conduct Bubble Test // ND BOP // Move To LSAU 48					
1/5/2023		Held safety meeting with crew. MOB unit with porper journey managment to LSAU 47. R/U CT and all supporting equip. PT BOP. PT well bore. TIH and tagged at 4455'. TOH. WOC. PT. Put on TCP (TP) guns and TIH to 3154'. Perf at 3154'. Unable to established injection. Pressured up to 700 psi and held. TIH and tagged TOC at 4152'. Spotted 17 bbls MLF. Spotted 27 sks of Class C from 3876' to 3603'. TOH to 3204'. Spotted 27 sks of Class C from 3204' to 2931'. TOH to surface. Shut in well secured location.					
1/6/2023		Held safety meeting with crew. PT CMT plug to 500 psi. Put on TCP (TP) guns. TIH to 2028'. Perf at 2028'. Established circulation with 3 bpm at 120 psi. Circ clean. Tagged TOC at 2994'. Spotted MLF up to 2028. TOH. Pumped from surface 47 sks of Class C. ETOC 1826. WOC. Attempt to PT, began circulating. TIH and attempt to tag. No tag. Kerry Fortner approved 100 sk plug, 429' inside and out of porduction CSG. Pump from surface 100 sks of Class C. Displaced with 37 bbls. ETOC 1599'. Got CMT returns to surface at the end of displacement. Contacted engineer, decided to circulate out all CMT. Pumped 115 bbls of Fresh water. Pumped 115 bbls of 10 ppg brine. Shut in the well and Secure					
1/9/2023		Held safety meeting with crew. Pumped from surface 47 sks of Class C cement from 2028' to 1826'. WOC. TIH and tagged TOC at 1887'. Upgraded with 27 sks of Class C to 1614'. TOH. TIH with perf guns. Shoot at 350'. Attempt to circ through surface. Getting .25 bpm.					
1/10/2023		Held safety meeting with crew. RIH and perforated at 350' with DP TCP. TOH. CC with 35 bbls of 10 ppg brine water. Pumped 150 sks of Class C down the production CSG and up the both annulus to surface. CMT to surface on all 3 strings. RDMO CTU.					
8/10/2023		R/U 300-psi, check pressure, prod 1-psi failed bubble test, intermediate 0-psi, passed bubble test, surface 0-psi, passed bubble test. put on proper PPE for triple SCAV, pump with hose 10-gallons of triple SCAV in production casing only, total 10-gallons of triple SCAV *****use caution when cutting well head off *****					
8/18/2023		Check well. Test Well					
9/16/2023		No gas on location. No gas in well all strings. All string bubbling Failed					
11/25/2023		N/U Screw on flange and 7 1/6 5K Frac Vavle.					
11/29/2023		Inspect equipment, RU equipment, Wait on crane, RU crane, NU spool, NU BOP, MU lubricator & injection head,					
11/30/2023		Change out lubricator, Disp. CT, Test BOP, Test CT connector, MU 2.88 power motor, Drill out broke through @355', RIH tag TOC @1511', CC 40 bbl, POOH, Pressure test, RD, Debrief.					
12/1/2023		ND BOP, Load equipment,					
12/2/2023		N/D 7 1/6 5K Frac Vavle.					
12/23/2023		JSA SWC SIF Bubble test well had 30 PSI and Gas Readings 0 PSI and no gas reading on Intermediate and Surface Casing. MIRU Crane Wireline Unit and PUMP Truck. RIH with 2.75 CBL Toll tagged 1511'. Logged up with 0 PSI on Casing. RIH to 1511' Pressured up Casing to 500 PSI had water come around wellhead POOH. RDMO.					
12/28/2023		MIRU NINE EL Wireline unit.					
1/28/2024		Held S/M, Sniff well, MIRU NINE Energy EL wireline unit. Check PSI. SIICP @ 15 PSI. SISCP @ 15 PSI. Hook up hose from surface casing to return tank. WSI N/D 7-1/16 B-1 top flange. N/U 7-5 Shooting flange. RIH With CIBP & Set @ 1,500'. H2o Level @ 1'. POOH, RDMO NINE EL wireline unit. R/U WSI Tester to 9-5/8" casing & Test to 500 PSI for 15 MIN. Slight bleed off, Larken flange was leaking some also. Bleed off to return tank. R/D 7-1/16"-5K Shooting flange & N/U 7-1/16" B-1 flange. Bubble test. Production casing bubbling with gas readings. 20 % Co2 & 6 % LEL. Left neddle valve open on each string to vent. Per Engineer. Debrief Crew. EOT.					
2/10/2024		Bubble test. All valves were open on arrival. Sniff well. Production casing bubbling with gas readings. 5 % Co2 & 4 % LEL Surface csg passed. Intermediate passed.					
5/22/2024		Move from Twin lakes 16 to LASU 47 Held safety meeting, check pressure. (0 psi)					
5/23/2024		Held safety meeting, check pressure. (0 psi) ND WH NU BOP TIH Perf at 1430', 410' TOH TIH W/PKR set at 440' circulate clean laydown excess tubing set PKR at 440'					
5/24/2024		Held safety meeting, check pressure. (0 psi) MIRU Petroplex cementers pump 228 sacks class C cement w/ MAGOX at 1430'-250' TOH WOC					
5/28/2024		Held safety meeting, check pressure. (0 psi) TIH tag TOC at 330' Pump 40 sacks C cement 1.32 yeild 14.8 PPG at 330'-0' TOH WOC TAG TOC at 0' RD					
6/4/2024		Review JSA, check well for pressure, blind sweep and remove anchors, excavate and found rock, broke out rock to 3 feet and checked casing head, got readings from intermediate, checked well again, panelled well.					
7/12/2024		Reviewed JSA, check well for readings and bubble test, cut well head off, welded swedge, hydro tested, hydro test failed casing underground leaking, paneled bell hole off.					
7/16/2024		Held Safety Meeting. Well Open Venting upon Arrival. Meter top of 2" Ball Valve. No Gas Readings Present. Flow Check . R/U 300 Psi Pumping Equip. Top off Well with H2O. Attempt Pressure Test. Pumping Away @ 0 Psi. Bubbles Present. Pull H2O From Well with Vacume Pump. Pour in 1 Gallon Nano Seal. Start Hesitation Squeeze Operations. Total Nano Seal Pumped today 72 oz . Build up Final Shut in Pressure 1000 Psi. Secure Well.					
7/17/2024		Held Safety Meeting. Well had 0 psi. pumped up to 1000 psi. Hesitation Squeeze Operations. Total Nano Seal Pumped today 8 oz . Build up Final Shut in Pressure 1000 Psi. Secure Well.					
9/9/2024		Tailgate meeting, check well for readings, blind sweep location, removed anchors, welded pole, restored location and well.					

CURRENT
WELLBORE DIAGRAM
LSAU 47

Created: 8/25/2008
Updated: 9/9/2008
Lease: Lovington San Andres
Surf Location: 1980' FSL & 1980' FWL
BH Location: _____
County: Lea
Current Status: Active Water Injector
State: NM

By: da Silva
By: CAYN
CHEVNO: FA4957
KB: _____
DF: 3836'
GL: _____

Field: Lovington
Well No.: 47
Twp/Rng: 17S 36E
Unit Ltr & Section: K/1
API: 30-025-03810
Original Spud Date: 6/3/1939
Original Compl. Date: _____
Formation: Grayburg/San Andres

Surface Csg.

Size: 13"
Wt.: 50#/ft
Set @: 297'
Sxs cmt: 250
Circ: YES
TOC: _____
Hole Size: 17-1/2"

Intermediate Csg. ("Salt String")

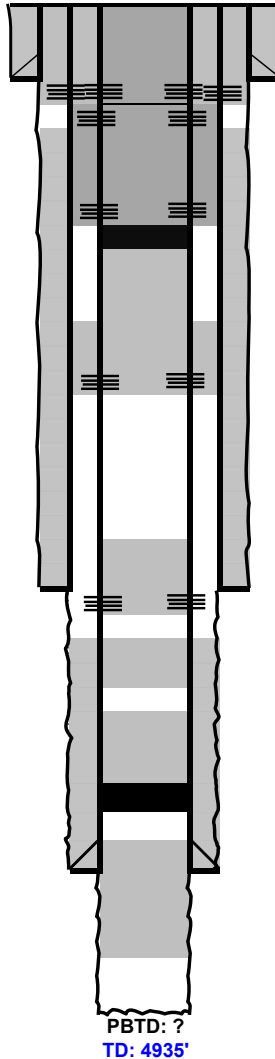
Size: 8-5/8"
Wt.: 32#/ft
Set @: 3104'
Sxs Cmt: 500
Circ: NO
TOC: 628' **CALC**
Hole Size: 11"

Production Csg. ("Oil String")

Size: 5-1/2"
Wt.: 17#
Set @: 4620'
Sxs Cmt: 150
Circ: _____
TOC: 3545' **CALC**
Hole Size: 7-7/8"

Open Hole: 4620-4944'
Size: _____

Rustler	1,936	
Salt	2,028	
Tansil	2,870	
Seven Rivers	3,259	
Queen	3,876	
Grayburg	4,327	
San Andres	4,550	
TD	4,944	



1/10/2023: Perf @ 350', Circ all strings to surface w/ 150 sx Class C

7/16/24: Squeeze 80 oz of Nano seal. Well passing Bubble test
5/28/24: Spot 40 sx Class C f/ 330'- 0'

5/23/24: Perforate casing with gator tool at 1,431' & 411'
Suicide circulate 228 sx Class C f/ 1,430' - 250' (PT, tag at 330')
1/28/24: Drill out surface plug; set CIBP @ 1,500'
1/9/2023: Spot 27 sx Class C f/ 1,887' - 1,613'

1/6/2023: Perf @ 2,028' (establish circ up int csg annulus)
Circ 47 sx Class C f/ 2,028' (failed PT, no tag)
Circ 100 sx Class C f/ 2,028' (failed PT, no tag)
1/9/2023: Circ 47 sx Class C f/ 2,028' (passed PT, tagged @ 1,887')

1/5/2023: Perf @ 3,104' (unable to establish injection)
Spot 27 sx Class C f/ 3,204' - 2,931'

1/5/2023: Spot 27 sx Class C f/ 3,876' - 3,603'

1/5/2023: Tag packer on Coil Tbg (4,455' CTM)
Spot 27 sx Class C f/ 4,455' - 4,182' (Tagged @ 4,152')

12/3/2022: Release on/off tool and LD production tbg
Production packer left at 4,467'
10/12/22: Bullhead 40 sx Class C below packer
Est TOC @ 4,520'

District I
1625 N. French Dr., Hobbs, NM 88240
Phone:(575) 393-6161 Fax:(575) 393-0720
District II
811 S. First St., Artesia, NM 88210
Phone:(575) 748-1283 Fax:(575) 748-9720
District III
1000 Rio Brazos Rd., Aztec, NM 87410
Phone:(505) 334-6178 Fax:(505) 334-6170
District IV
1220 S. St Francis Dr., Santa Fe, NM 87505
Phone:(505) 476-3470 Fax:(505) 476-3462

State of New Mexico
Energy, Minerals and Natural Resources
Oil Conservation Division
1220 S. St Francis Dr.
Santa Fe, NM 87505

CONDITIONS

Action 396350

CONDITIONS

Operator: CHEVRON U S A INC 6301 Deauville Blvd Midland, TX 79706	OGRID: 4323
	Action Number: 396350
	Action Type: [C-103] Sub. Plugging (C-103P)

CONDITIONS

Created By	Condition	Condition Date
kfortner	Need C103Q and marker photo to release CBL in files DHM in place 9/9/24	10/28/2024