

Santa Fe Main Office

Phone: (505) 476-3441 Fax: (55) 476-3462

General Information

Phone: (505) 629-6116

Online Phone Directory Visit:

<https://www.emnrd.nm.gov/ocd/contact-us/>State of New Mexico
Energy, Minerals and Natural ResourcesForm C-103
Revised July 18, 2013OIL CONSERVATION DIVISION
1220 South St. Francis Dr.
Santa Fe, NM 87505

SUNDRY NOTICES AND REPORTS ON WELLS (DO NOT USE THIS FORM FOR PROPOSALS TO DRILL OR TO DEEPEN OR PLUG BACK TO A DIFFERENT RESERVOIR. USE "APPLICATION FOR PERMIT" (FORM C-101) FOR SUCH PROPOSALS.) 1. Type of Well: Oil Well <input checked="" type="checkbox"/> Gas Well <input type="checkbox"/> Other <input type="checkbox"/>		WELL API NO. 30-015-39854
2. Name of Operator SPUR ENERGY PARTNERS LLC		5. Indicate Type of Lease STATE <input checked="" type="checkbox"/> FEE <input type="checkbox"/>
3. Address of Operator 9655 KATY FREEWAY, SUITE 500, HOUSTON, TX 77024		6. State Oil & Gas Lease No.
4. Well Location Unit Letter <u>J</u> : <u>2310</u> feet from the <u>SOUTH</u> line and <u>1650</u> feet from the <u>EAST</u> line Section <u>08</u> Township <u>17S</u> Range <u>29E</u> NMPM <u>EDDY</u> County		7. Lease Name or Unit Agreement Name CONOCO 8 STATE
11. Elevation (Show whether DR, RKB, RT, GR, etc.) 3620' GL		8. Well Number <u>2</u>
		9. OGRID Number 328947
		10. Pool name or Wildcat EMPIRE; GLORIETA-YESO, EAST

12. Check Appropriate Box to Indicate Nature of Notice, Report or Other Data

NOTICE OF INTENTION TO:

PERFORM REMEDIAL WORK ☐ PLUG AND ABANDON ☒
 TEMPORARILY ABANDON ☐ CHANGE PLANS ☐
 PULL OR ALTER CASING ☐ MULTIPLE COMPL ☐
 DOWNHOLE COMMINGLE ☐
 CLOSED-LOOP SYSTEM ☐
 OTHER: ☐

SUBSEQUENT REPORT OF:

REMEDIAL WORK ☐ ALTERING CASING ☐
 COMMENCE DRILLING OPNS. ☐ P AND A ☐
 CASING/CEMENT JOB ☐
 OTHER: ☐

13. Describe proposed or completed operations. (Clearly state all pertinent details, and give pertinent dates, including estimated date of starting any proposed work). SEE RULE 19.15.7.14 NMAC. For Multiple Completions: Attach wellbore diagram of proposed completion or recompletion.

Please find proposed P&A procedure and wellbore diagram attached for your review.

This sundry is a revision to Action ID: 393529 that was submitted on 10/17/2024.

Spud Date:

Rig Release Date:

I hereby certify that the information above is true and complete to the best of my knowledge and belief.

SIGNATURE Sarah Chapman TITLE REGULATORY DIRECTOR DATE 10/24/2024

Type or print name SARAH CHAPMAN E-mail address: SCHAPMAN@SPURENERGY.COM PHONE: 832-930-8613
For State Use Only

APPROVED BY: _____ TITLE _____ DATE _____
 Conditions of Approval (if any): _____

Conoco 8 State #2

P&A Procedure

API: 30-015-39854

1. Plug #1: Set CIBP @ 3200' & dump bail 35' of cmt. Pressure test csg to 500psi for 30 minutes.
2. Circ MLF and Run CBL from 2915' to surface.
3. Plug #2: Spot 37 sxs Class C Cmt from 2028' - 2495'
4. Plug #3: Spot 25 sxs Class C Cmt from 1557' - 1807'
5. Plug #4: Spot 25 sxs Class C Cmt from 725' - 975'
6. Plug #5: Spot 50 sxs Class C Cmt from 0' - 383'
7. Verify cmt to surface on all annuli. Cutoff wellhead. Weld on dryhole marker.

API #	30-015-39854	Conoco 8 State #2	County, ST	Eddy County, NM
Operator	Spur Energy Partners		Sec-Twn-Rng	8-17S-29E
Field	Empire; Glorieta-Yeso, East		Footage	2310 FSL 1650 FEL
Spud Date	3/2/2012		Survey	32.848259, -104.0937958

Formation (MD)	
Yates	854
Queen	1682
San Andres	2420
Glorieta	3841
Yeso	3933

RKB	3637
GL	3620

Hole Size	17-1/2"
TOC	Surface
Method	Circ 5 sx

Csg Depth	308'
Size	13-3/8"
Weight	48
Grade	H40
Connections	
Cement	1000 sx

Well History

Tubing Detail					
Jts	Size	Depth	Length	Detail	
111	2-7/8"	3574	3574	Tubing	
1	2-7/8"	3576.1	2.1	Marker sub	
2	2-7/8"	3641	64.92	Tubing	
1	5-1/2"	3643.7	2.7	TAC	
44	2-7/8"	5123.1	1479.4	Tubing	
1	2-7/8"	5124.2	1.1	SN	
1	2-7/8"	5128.3	4.1	Slotted sub	
2	2-7/8"	5193.6	65.28	Tubing	
1	2-7/8"	5194	0.4	Bull Plug	

Rod Detail					
Rods	Size	Depth	Length	Guides	Detail
1	1-1/2"	26	26		SMPR
2	1-1/4"	50	24		FG Pony Rods
56	1-1/4"	2150	2100		FG Rods
110	7/8"	4900	2750		N90 Rods
9	1-1/2"	5125	225		Sinker Bars
1	7/8"	5125.5	0.5		Shear Coupling
1	2-1/2"	5149.5	24		250-125-RHBC-24-4 Pump

Hole Size	11"
TOC	Surface
Method	Circ 119 sx

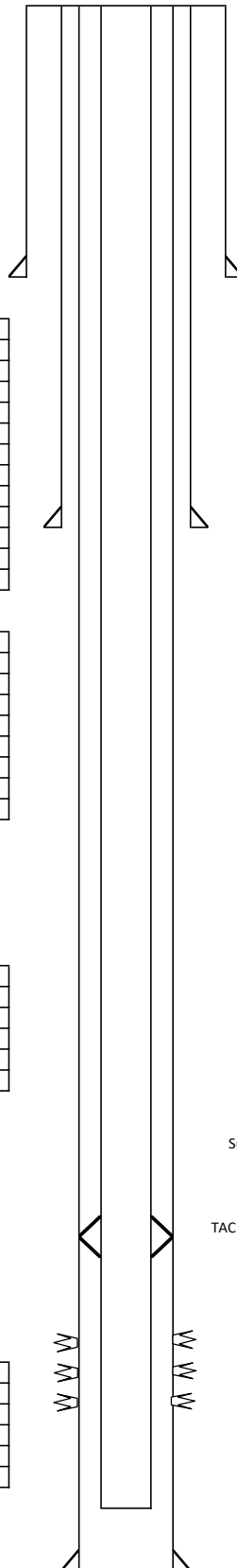
Csg Depth	860'
Size	8-5/8"
Weight	24
Grade	J55
Connections	STC
Cement	400 sx

Last Update	10/17/2024
By	WSC

PBTD	5350'
TD MD	5410'
TD TVD	5410'

Hole Size	7-7/8"
TOC	Surface
Method	Circ 73 sx

Csg Depth	5410'
Size	5-1/2"
Weight	17
Grade	J55
Connections	LTC
Cement	900 sx



Suspected casing leak ~3004'-3434'

TAC @ 3643'

Perforations
3950'-5160'

API #	30-015-39854	Conoco 8 State #2	County, ST	Eddy County, NM
Operator	Spur Energy Partners		Sec-Twn-Rng	8-17S-29E
Field	Empire; Glorieta-Yeso, East		Footage	2310 FSL 1650 FEL
Spud Date	3/2/2012		Survey	32.848259, -104.0937958

Formation (MD)	
Yates	854
Queen	1682
San Andres	2420
Glorieta	3841
Yeso	3933

RKB	3637
GL	3620

Hole Size	17-1/2"
TOC	Surface
Method	Circ 5 sx

Csg Depth	308'
Size	13-3/8"
Weight	48
Grade	H40
Connections	
Cement	1000 sx

Tubing Detail				
Jts	Size	Depth	Length	Detail
		3400		Top of Fish
5.4	2-7/8"	3574	174	Tubing
1	2-7/8"	3576.1	2.1	Marker sub
2	2-7/8"	3641	64.92	Tubing
1	5-1/2"	3643.7	2.7	TAC
44	2-7/8"	5123.1	1479.4	Tubing
1	2-7/8"	5124.2	1.1	SN
1	2-7/8"	5128.3	4.1	Slotted sub
2	2-7/8"	5193.6	65.28	Tubing
1	2-7/8"	5194	0.4	Bull Plug

Rod Detail					
Rods	Size	Depth	Length	Guides	Detail

Hole Size	11"
TOC	Surface
Method	Circ 119 sx

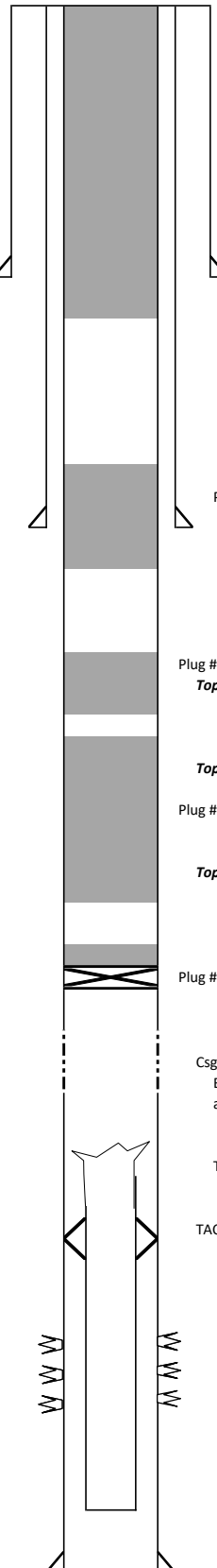
Csg Depth	860'
Size	8-5/8"
Weight	24
Grade	J55
Connections	STC
Cement	400 sx

Last Update	10/23/2024
By	WSC

PBTD	5350'
TD MD	5410'
TD TVD	5410'

Hole Size	7-7/8"
TOC	Surface
Method	Circ 73 sx

Csg Depth	5410'
Size	5-1/2"
Weight	17
Grade	J55
Connections	LTC
Cement	900 sx

**P&A Procedure**

1. Plug #1: Set CIBP @ 3200' & dump bail 35' of cmt. Pressure test csg to 500psi for 30 min.
2. Circ MLF and Run CBL from 2915' to surface.
3. Plug #2: Spot 37 sxs Class C Cmt from 2028' - 2495'
4. Plug #3: Spot 25 sxs Class C Cmt from 1557' - 1807'
5. Plug #4: Spot 25 sxs Class C Cmt from 725' - 975'
6. Plug #5: Spot 50 sxs Class C Cmt from 0' - 383'
7. Verify cmt to surface on all annuli. Cutoff wellhead. Weld on dryhole marker.

Plug #5: Spot 50 sxs Class C Cmt from 0' - 383'

Plug #4: Spot 25 sxs Class C Cmt from 725' - 975'
Top of Yates @ 854'

Plug #3: Spot 25 sxs Class C Cmt from 1557' - 1807'
Top of Queen @ 1,682'

Top of Greyburg @ 2,103'

Plug #2: Spot 37 sxs Class C Cmt from 2028' - 2495'

Top of San Andres @ 2,420'

Plug #1: Set CIBP @ 3200' and Dump bail 35' Class C Cmt

Csg leak below 3200', suspected ~3270'-3501', est BHP 2300-2500 psi
 Based on X section and Red Twelve State 4 Injection Interval
 and successful csg test above 3200' on 10/21/2024

Top of Parted Tbg @ 3,400'

TAC @ 3643'

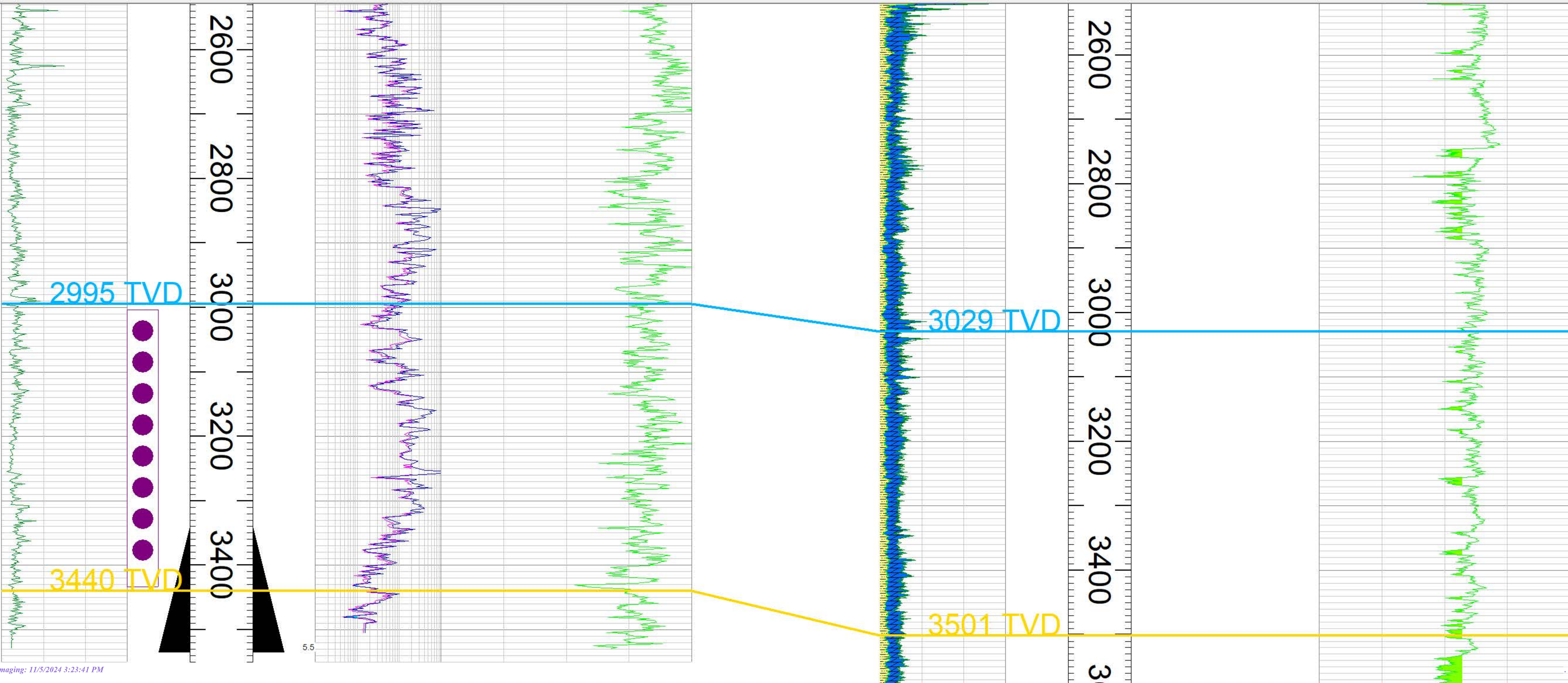
Top of Yeso @ 3,933'

Perforations
 3950'-5160'

Daily Operations		
Start Date	End Date	Summary
10/9/2024	10/9/2024	AOL,PJSM. SPOT SPUR MATTING BOARD. ANCHORS ARE UP TO DATE. CREW LUNCH. MIRUPU, SET H2S MONITOR IN PLACE. SITP 850PSI. SICP 850PSI. RU KILL TRK TO TBG. AND PUMPED 5BBLs TFW PRESSURE TO 1500PSI AND WOULD BLEED BACK TO 850 INSTANTLY. BLED CSG TO 600PSI. AND TBG. DROPPED TO 600PSI. SHUT THE VALVE AND INSTNTLY PRESSURED UP TO 850PSI. KILL MUD WILL BE ON LOC IN THE MORNING. SDFN.
10/10/2024	10/10/2024	<p>AOL,PJSM. H2S MONITOR IS IN PLACE. RU KILL TRK TO TBG AND PUMP 23BBLs 13# CALCIUM CARBONATE MUD. SITP 0 PSI. RU KILL TrK TO CSG.& PUMP 60BBLs 13# CALCIUM CARBONATE MUD DOWN ANNULUS. SICP 0 PSI. WELL ON SLIGHT VACUUM AFTER 10 MIN.WAIT. LDPR & SB. UNSEATED PUMP EASILY. TOH W/ 15- 1 1/4" FG RODS AND RODS STARTED SWABBING MUD OUT OF TBG. DISCUSSED W/BILL AND DECISION MADE TO CLOSE RADIGAN AND PRESSURE UP TBG. THEN WILL WORK RODS UP AND DOWN TO CLEAR A CHANNEL THRU RESTRICTION. CREW SDFL. PRESSURE TBG TO 500PSI. AND WORK RODS UP & DOWN. CONTINUE TOH W/RODS.</p> <p>CURRENT TBG.DETAIL;</p> <p>1- 1 1/2" X 26' SMPR 3- 1 1/4" FG PONY RODS. 54- 1 1/4" FG RODS. 110- 7/8" N90 RODS. 9- 1 1/2" K BARS. 1- 7/8" 26K SHEAR TOOL. 1- 25-125-RHBC-24-4 PUMP 1- 1 1/4" X 6' GA.</p> <p>FG RODS HAVE PITTING ON SHOULDERS, 7/8" RODS 1-95 HAVE HEAVY SCALE AND PITTING ON RODS. 7/8" RODS 96-110 HAVE NO VISIBLE PITTING OR WEAR. PUMP WON'T SCOPE IN. TBG. AND CSG STARTED FLOWING ONCE WE GOT OUT W/PUMP.TALKED TO BILL AND WILL HAVE 110BBLs 16# MUD IN THE MORNING. PUMPED A TOTAL OF 110BBLs 13# MUD FOR WELL CONTROL. SECURE WELL AND SDFN.</p>
10/11/2024	10/11/2024	<p>AOL,PJSM. H2S MONITOR IS IN PLACE. RU KILL TRK TO TBG AND PUMP 23BBLs 16# CALCIUM CARBONATE MUD. SITP 0 PSI. RU KILL TrK TO CSG.& PUMP 60BBLs 16# CALCIUM CARBONATE MUD DOWN ANNULUS. SICP 0 PSI. NDWH & NUBOP. RELEASE 5 1/2" X 2 7/8" TAC SET @3661'. STRING WT. 22PTS. TBG.PARTED. TOH W/ TBG. AS FOLLOWS;</p> <p>103JTS 2 7/8" 6.5# J-55 EUE 8RD TBG. 26' OF JT #104.</p> <p>TBG PULLED SO FAR IS PITTED AND HAS HOLES SCATTERED THROUGHOUT. SEVERAL JTS PARTED WHEN TONGS TIED TO BREAK JT APART.</p> <p>FISH LEFT IN HOLE; TOP OF FISH @ 3462' 6' OF JT #107 4JTS 2 7/8" 6.5# J55 EUE 8RD TBG. 2 7/8" X 2' J55 MARKER SUB. 2 JTS 2 7/8" 6.5# J55 EUE 8RD TBG. 5 1/2" X 2 7/8" TAC 44 JTS 2 7/8" 6.5# J55 EUE 8RD TBG. 2 7/8" SN. 2 7/8" X 4' SLOTTED SUB. 2 JTS 2 7/8" 6.5# J55 EUE 8RD MUD JTS. 2 7/8" BULL PLUG @ 5211'</p> <p>SECURE WELL AND SHUT DOWN TILL TUESDAY.</p>
10/15/2024	10/16/2024	AOL,HELD PJSM, H2S EQUIPMENT IN PLACE, 0# SICP, LOADED L-80 AND TALLYED TUBING ON PIPE RACKS, WAITED ON DECISION ON WHAT TO RUN, RIH WITH MILL TO DERSS OFF FISH, RIH WITH MILL AND 23 JNTS L-80, KILL TRUCK WILL NOT START, SECURED WELL, WAITING ON MECHANIC, MECHANIC AND VAC TRUCK AOL, CONTINUE TIH WITH MILL AND 2 7/8 L-80 TUBING SLOWLY TO PREVENT LOSS OF DISPLACEMENT OF KILL FLUID, ON JNT 89 # 2800' TUBING STARTED TO FLOW, RU KILL TRUCK ON TUBING AND TRIED TO PUMP KILL FLUID OUT OF FRAC TANK, KILL FLUID IS BELOW MANIFOLD AND KILL TRUCK CAN NOT PULL THE KILL FLUID, NOTIFIED BILL, ORDERED 2 LOADS 120 BBLs OF 16# KILL FLUID TO BE DELIVERED TO LOCATION 7 AM TOMORROW MORNING, SECURED WELL, SDFN

Daily Operations

Start Date	End Date	Summary
10/17/2024	10/18/2024	AOL, HELD PJSM, H2S EQUIPMENT IN PLACE, 0# SICP AND 0# SITP, TIH WITH 1 STAND OF 2 7/8 L-80, TAGGED FISH, ATTEMPTED TO LATCH ONTO FISH, POOH WITH 2 7/8 L-80 AND OVERSHOT TO LOOK AT TOOLS, OOH WITH 2 7/8 AND OVERSHOT, THERE IS MARKS IN SIDE THE MILL CONTROL AND GRAPPLE, GRAPPLE DID NOT ENGAGE, DISCUSSED WITH ENGINEERS, DECISION MADE TO RELEASE WIRELINE AND RIH WITH SHOE, T-DOG AND WASH PIPE TO CUT OVER TAC, WAITING ON TOOLS TO ARRIVE ON LOCATION, TOOLS AOL, MEASURED AND MADE UP TOOL, RIH WITH 4 5/8" 5' SHOE, T-DOG, 10 - 4 1/2" WASH PIPE, TOP JNT, AND 40 - 2 7/8" L-80, PUTTING SHOE @ 1580', SECURED WELL, SDFN, WILL CONTINUE TIH IN THE MORNING TO WASH OVER TAC
10/18/2024	10/19/2024	AOL, HELD PJSM, H2S EQUIPMENT IN PLACE, CONTINUE TIH WITH 4 5/8" 5' SHOE, T-DOG, 10 - 4 1/2" WASH PIPE, TOP JNT, 2 7/8" L-80, TAGGED TOP OF FISH @ 3400' RU SWIVEL, SWIVEL HAS BAD HYDRAULIC LEAK, RD SWIVEL, WAITING ON SWIVEL FROM HOBBS, NEW SWIVEL AOL, RU SWIVEL, STARTED WASHING OVER FISH @ 3400', TRIED TO PUMP DOWN TUBING WITH KILL TRUCK AND PRESSURED UP TO 1000 PSI, MADE 4' SETTING 2 POINTS DOWN ON FISH SWIVEL TORQUED UP WRAPING KELLY HOSE AND HYDRAULIC HOSES AROUND TUBING AND TWISTING UP THE DRILL LINE, PICKED UP ON TUBING AND TUBING IS DRAGGING AND WEIGHING 6 POINT HEAVIER, DISCUSSED WITH BILL, DECISION MADE TO POOH AND SEE WHAT WE HAVE, CREW SDFL, RD SWIVEL, POOH TO CHECK TOOLS, OOH WITH 2 7/8" L-80 TUBING AND TOOLS, BOTTOM OF MILL WORN DOWN AND HAD DEEP GROOVES FROM THE CASING ON THE OUTER WALL AND GROOVES FROM THE TUBING ON THE INNER WALL OF THE SHOE, LD WASH PIPE, SECURED WELL, SDFW



District I
1625 N. French Dr., Hobbs, NM 88240
Phone:(575) 393-6161 Fax:(575) 393-0720
District II
811 S. First St., Artesia, NM 88210
Phone:(575) 748-1283 Fax:(575) 748-9720
District III
1000 Rio Brazos Rd., Aztec, NM 87410
Phone:(505) 334-6178 Fax:(505) 334-6170
District IV
1220 S. St Francis Dr., Santa Fe, NM 87505
Phone:(505) 476-3470 Fax:(505) 476-3462

State of New Mexico
Energy, Minerals and Natural Resources
Oil Conservation Division
1220 S. St Francis Dr.
Santa Fe, NM 87505

CONDITIONS

Action 395396

CONDITIONS

Operator: Spur Energy Partners LLC 9655 Katy Freeway Houston, TX 77024	OGRID: 328947
	Action Number: 395396
	Action Type: [C-103] NOI Plug & Abandon (C-103F)

CONDITIONS

Created By	Condition	Condition Date
gcordero	None	11/5/2024