

U.S. Department of the Interior
BUREAU OF LAND MANAGEMENT

Well Name: CLEVELAND

Well Location: T27N / R9W / SEC 21 /
SWSE / 36.55681 / -107.78997

County or Parish/State: SAN
JUAN / NM

Well Number: 4S

Type of Well: OTHER

Allottee or Tribe Name:

Lease Number: NMNM011393

Unit or CA Name:

Unit or CA Number:

US Well Number: 3004534777

Operator: HILCORP ENERGY
COMPANY

Subsequent Report

Sundry ID: 2818355

Type of Submission: Subsequent Report

Type of Action: Plug and Abandonment

Date Sundry Submitted: 10/22/2024

Time Sundry Submitted: 02:57

Date Operation Actually Began: 10/17/2024

Actual Procedure: Hilcorp Energy has plugged and abandoned the subject well on 10/21/2024 per the attached daily report.

SR Attachments

Actual Procedure

Cleveland_4S_SR_P_A_BLM_Submitted_20241022145658.pdf

Well Name: CLEVELAND

Well Location: T27N / R9W / SEC 21 /
SWSE / 36.55681 / -107.78997County or Parish/State: SAN
JUAN / NM

Well Number: 4S

Type of Well: OTHER

Allottee or Tribe Name:

Lease Number: NMNM011393

Unit or CA Name:

Unit or CA Number:

US Well Number: 3004534777

Operator: HILCORP ENERGY
COMPANY**Operator**

I certify that the foregoing is true and correct. Title 18 U.S.C. Section 1001 and Title 43 U.S.C. Section 1212, make it a crime for any person knowingly and willfully to make to any department or agency of the United States any false, fictitious or fraudulent statements or representations as to any matter within its jurisdiction. Electronic submission of Sundry Notices through this system satisfies regulations requiring a

Operator Electronic Signature: PRISCILLA SHORTY

Signed on: OCT 22, 2024 02:57 PM

Name: HILCORP ENERGY COMPANY

Title: Regulatory Technician

Street Address: 382 ROAD 3100

City: AZTEC

State: NM

Phone: (505) 324-5188

Email address: PSHORTY@HILCORP.COM

Field

Representative Name:

Street Address:

City:

State:

Zip:

Phone:

Email address:

BLM Point of Contact

BLM POC Name: MATTHEW H KADE

BLM POC Title: Petroleum Engineer

BLM POC Phone: 5055647736

BLM POC Email Address: MKADE@BLM.GOV

Disposition: Accepted

Disposition Date: 10/22/2024

Signature: Matthew Kade

CLEVELAND 4S**30.045.34777****PLUG AND ABANDONMENT**

10/17/2024 - RIG UP. CK PRESSURES. SITP 0 PSI, SICP 0 PSI SIBHP 0 PSI. UNSEAT ROD PUMP. SOFT BREAK AND LEAVE RODS IN TBG. ND WH. NU BOP. R/U WILSON SERVICES AND PSI TEST BOP. RU FLOOR. FUNCTION TEST AND PRESSURE TEST BOP (GOOD). UNLAND WELL AND REMOVE TBG HANGER. SISW. SDFN.

10/18/2024 – CK PRESSURES. SICP 0 PSI SIBHP 0 PSI. L/D PRODUCTION TUBING STRING WHILE CUTTING UP FIBERGLASS RIBBON ROD. PU 3-7/8" STRING MILL. TALLY AND PU 2-3/8 TBG TO 2033'. TOH AND LD STRING MILL. P/U 4-1/2" CICR. TIH AND SET @ 1995'. **PUMP PLUG #1A (18SX CLASS G - 1.15 YIELD - 15.8 PPG CEMENT 2.14 BBLS MIX WATER 3.7 BBLS SLURRY BOC @ 2219' TOC @ 1995'.)** STING OUT OF RETAINER. LOAD CASING WITH FRESH WATER. TOH W/ TUBING AND SETTING TOOL. R/U TWG WIRELINE. PERFORM CBL. **HEC ENGINEER SENT BLM AND NMOCD AN EMAIL DOCUMENTING VERBAL APPROVAL TO MAKE ADJUSTMENTS TO THE PROCEDURE BASED ON THE CBL. TIH W/ TAG SUB TO EOT @ 1995'. PUMP PLUG 1B (14SX CLASS G - 1.15 YIELD - 15.8 PPG CEMENT 1.6 BBLS MIX WATER 7.8 BBLS SLURRY BOC @ 1995' TOC @ 1816'.)** L/D 5 JTS TOH W/ 10 JTS TO DERRICK. SISW. SDFWE.

10/21/2024 - CK PRESSURES. SICP 0 PSI SIBHP 0 PSI. TIH AND **TAG PLUG #1B @ 1806'**. L/D 12 JTS OF TUBING. **PUMP PLUG #2 (26SX CLASS G - 1.15 YIELD - 15.8 PPG CEMENT 3 BBLS MIX WATER 5.3 BBLS SLURRY BOC @ 1472' TOC @ 1139'.)** L/D REMAINDER OF TUBING. R/U WIRELINE AND RIH AND PERFORATE @ 95'. CIRCULATE UP BRADENHEAD. R/U HEC CEMENT PACKAGE AND **PUMP SURFACE PLUG (59SX CLASS G - 1.15 YIELD - 15.8 PPG - BOC @ 377' - EST TOC @ 11').** WOC. N/D BOP. CUT OFF WELLHEAD. R/D UNIT. TAG CEMENT (36' IN 4-1/2" CASING - 6' IN 4-1/2 BY 7" ANNULUS). INSTALL P&A MARKER. TOP OFF ANNULUS AND CASING (26 SX CLASS G - 1.15 YIELD - 15.8 PPG). RD RR. **BLM REP NATASHA DISHFACE ON LOCATION TO WITNESS PLUGS.**

WELL WAS PLUGGED AND ABANDONED ON 10/21/2024

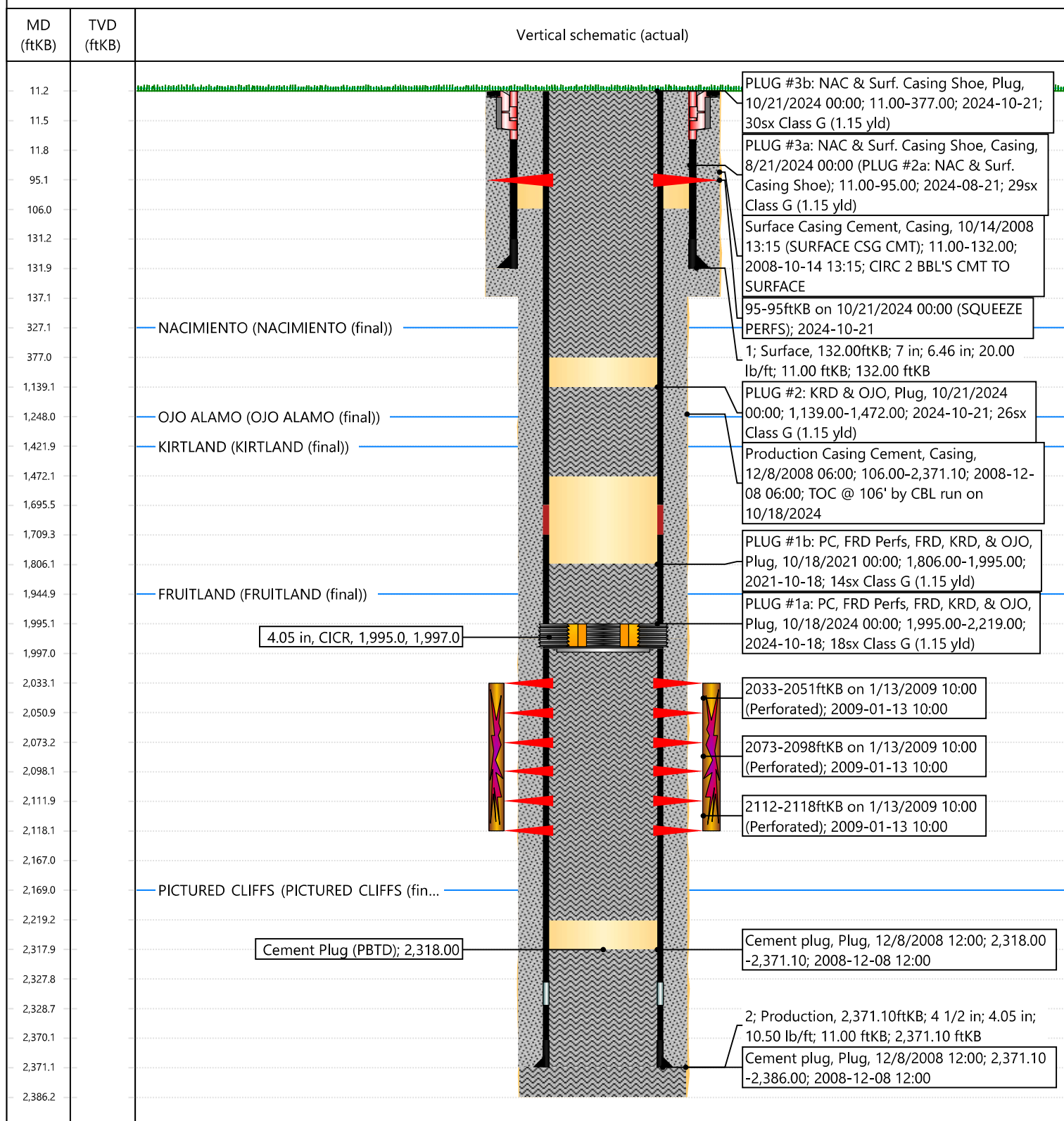


Current Schematic - Version 3

Well Name: CLEVELAND #4S

API / UWI 3004534777	Surface Legal Location 021-027N-009W-O	Field Name BASIN FRUITLAND COAL	Route 0903	State/Province NEW MEXICO	Well Configuration Type VERTICAL
Ground Elevation (ft) 6,284.00	Original KB/RT Elevation (ft) 6,295.00	Tubing Hanger Elevation (ft)	RKB to GL (ft) 11.00	KB-Casing Flange Distance (ft)	KB-Tubing Hanger Distance (ft)
Tubing Strings					
Run Date 2/7/2011 11:00	Set Depth (ftKB) 2,150.29	String Max Nominal OD (in) 2 3/8	String Min Nominal ID (in) 2.00	Weight/Length (lb/ft) 4.70	Original Spud Date 10/14/2008 10:00

Original Hole [VERTICAL]



Priscilla Shorty

From: Kuehling, Monica, EMNRD <monica.kuehling@emnrd.nm.gov>
Sent: Monday, October 21, 2024 7:27 AM
To: Rennick, Kenneth G; John LaMond; Kade, Matthew H
Cc: Farmington Regulatory Techs; Matt Gustamantes - (C); Clay Padgett; Lee Murphy; Rustin Mikeska; John LaMond
Subject: RE: [EXTERNAL] P&A Revision Request for Hilcorp's CLEVELAND 4S (API # 3004534777)

CAUTION: External sender. DO NOT open links or attachments from UNKNOWN senders.

NMOCD approves below

Thank you

Monica Kuehling
Compliance Officer Supervisor
Deputy Oil and Gas Inspector
New Mexico Oil Conservation Division
North District
Cell Phone: 505-320-0243
Email - monica.kuehling@emnrd.nm.gov

From: Rennick, Kenneth G <krennick@blm.gov>
Sent: Friday, October 18, 2024 5:56 PM
To: John LaMond <jlamond@hilcorp.com>; Kuehling, Monica, EMNRD <monica.kuehling@emnrd.nm.gov>; Kade, Matthew H <mkade@blm.gov>
Cc: Farmington Regulatory Techs <FarmingtonRegulatoryTechs@hilcorp.com>; Matt Gustamantes - (C) <Matt.Gustamantes@hilcorp.com>; Clay Padgett <cpadgett@hilcorp.com>; Lee Murphy <lmurphy@hilcorp.com>; Rustin Mikeska <rmikeska@hilcorp.com>; John LaMond <jlamond@hilcorp.com>
Subject: Re: [EXTERNAL] P&A Revision Request for Hilcorp's CLEVELAND 4S (API # 3004534777)

To confirm, the BLM finds the procedure appropriate.

Get [Outlook for iOS](#)

From: John LaMond <jlamond@hilcorp.com>
Sent: Friday, October 18, 2024 5:43:55 PM
To: Kuehling, Monica, EMNRD <monica.kuehling@emnrd.nm.gov>; Rennick, Kenneth G <krennick@blm.gov>; Kade, Matthew H <mkade@blm.gov>
Cc: Farmington Regulatory Techs <FarmingtonRegulatoryTechs@hilcorp.com>; Matt Gustamantes - (C) <Matt.Gustamantes@hilcorp.com>; Clay Padgett <cpadgett@hilcorp.com>; Lee Murphy <lmurphy@hilcorp.com>; Rustin Mikeska <rmikeska@hilcorp.com>; John LaMond <jlamond@hilcorp.com>
Subject: RE: [EXTERNAL] P&A Revision Request for Hilcorp's CLEVELAND 4S (API # 3004534777)

Good afternoon Monica and Kenny,

Today Hilcorp successfully set the 4-1/2" CICR @ 1,995'. We then pumped PLUG #1a successfully, as previously approved.

We then ran a CBL on top of the CICR @ 1,995'. Attached is the CBL that was run today (10-24-2024) on the CLEVELAND 4S. It shows TOC @ ~106' (Surface Casing Shoe @ 132').

Additionally, Hilcorp performed a good pressure test above the CICR @ 1,995'.

Moving forward, based on the results of the CBL Hilcorp received verbal approval from the NMOCD and BLM to make the following adjustments to the previously approved procedure:

- PLUG #1b will now be split into two separate plugs; a single inside plug covering the FRD & another plug covering both the KRD & OJO. Those PLUGS will now be called PLUG #1b & PLUG #2, respectively.
- **PLUG #1b: 12sx of Class G Cement (15.8 PPG, 1.15 yield); PC Top @ 2,169' | FRD Perfs @ 2,033' | FRD Top @ 1,945':**
 - Pump 12 sack balanced cement plug on top of the CICR. (est. **TOC @ +/- 1,845'** & est. **BOC @ +/- 1,995'**).
 - Wait on Cement for 4 hours, tag TOC w/ work string. *Note cement plug lengths & volumes account for excess.
- **PLUG #2: 26sx of Class G Cement (15.8 PPG, 1.15 yield); KRD Top @ 1,422' | OJO Top @ 1,248':**
 - Pump an 26 sack balanced cement plug inside the 4-1/2" casing (est. **TOC @ +/- 1,148'** & est. **BOC @ +/- 1,472'**).
- **PLUG #3: 40sx of Class G Cement (15.8 PPG, 1.15 yield); NAC Top @ 327' | Surf. Casing Shoe @ 132':**
 - TOC @ 106' by CBL run 2024-10-18.
 - Perforate squeeze holes @ **95'**.
 - RIH w/ tubing inside 4-1/2" casing to 377'
 - Pump 10sx of cement in the 4-1/2" casing X 7" casing annulus (est. **TOC @ +/- 0'** & est. **BOC @ +/- 95'**).
 - Pump a 30 sack balanced cement plug inside the 4-1/2" casing (est. **TOC @ +/- 0'** & est. **BOC @ +/- 377'**).
 - WOC & Tag
- Cut off wellhead, weld on P&A marker, & top off w/ cement.

Please let me know if you have any questions.

Thanks,

John LaMond

Operations Engineer – Technical Services

Hilcorp Energy Company

1111 Travis

Houston, TX 77002

346-237-2210 (Office)

832-754-9692 (Cell)

jlamond@hilcorp.com

From: Kuehling, Monica, EMNRD <monica.kuehling@emnrd.nm.gov>

Sent: Tuesday, September 24, 2024 3:52 PM

To: Rennick, Kenneth G <krennick@blm.gov>; John LaMond <jlamond@hilcorp.com>; Kade, Matthew H <mkade@blm.gov>

Cc: Farmington Regulatory Techs <FarmingtonRegulatoryTechs@hilcorp.com>; Matt Gustamantes - (C)

<Matt.Gustamantes@hilcorp.com>; Clay Padgett <cpadgett@hilcorp.com>; Lee Murphy <lmurphy@hilcorp.com>;
Rustin Mikeska <rmikeska@hilcorp.com>

Subject: RE: [EXTERNAL] P&A Revision Request for Hilcorp's CLEVELAND 4S (API # 3004534777)

CAUTION: External sender. DO NOT open links or attachments from UNKNOWN senders.

NMOCD approves below

Thank you

Monica Kuehling
Compliance Officer Supervisor
Deputy Oil and Gas Inspector
New Mexico Oil Conservation Division
North District
Office Phone: 505-334-6178 ext. 123
Cell Phone: 505-320-0243
Email - monica.kuehling@emnrd.nm.gov

From: Rennick, Kenneth G <krennick@blm.gov>

Sent: Tuesday, September 24, 2024 1:27 PM

To: John LaMond <jlamond@hilcorp.com>; Kuehling, Monica, EMNRD <monica.kuehling@emnrd.nm.gov>; Kade, Matthew H <mkade@blm.gov>

Cc: Farmington Regulatory Techs <FarmingtonRegulatoryTechs@hilcorp.com>; Matt Gustamantes - (C) <Matt.Gustamantes@hilcorp.com>; Clay Padgett <cpadgett@hilcorp.com>; Lee Murphy <lmurphy@hilcorp.com>; Rustin Mikeska <rmikeska@hilcorp.com>

Subject: Re: [EXTERNAL] P&A Revision Request for Hilcorp's CLEVELAND 4S (API # 3004534777)

The BLM finds the procedure appropriate.

Kenneth (Kenny) Rennick

Petroleum Engineer

Bureau of Land Management
Farmington Field Office
6251 College Blvd
Farmington, NM 87402

Email: krennick@blm.gov
Mobile & Text: 505.497.0019

From: John LaMond <jlamond@hilcorp.com>

Sent: Tuesday, September 24, 2024 1:05 PM

To: Kuehling, Monica, EMNRD <monica.kuehling@emnrd.nm.gov>; Rennick, Kenneth G <krennick@blm.gov>; Kade, Matthew H <mkade@blm.gov>
Cc: Farmington Regulatory Techs <FarmingtonRegulatoryTechs@hilcorp.com>; Matt Gustamantes - (C) <Matt.Gustamantes@hilcorp.com>; Clay Padgett <cpadgett@hilcorp.com>; John LaMond <jlamond@hilcorp.com>; Lee Murphy <lmurphy@hilcorp.com>; Rustin Mikeska <rmikeska@hilcorp.com>
Subject: [EXTERNAL] P&A Revision Request for Hilcorp's CLEVELAND 4S (API # 3004534777)

This email has been received from outside of DOI - Use caution before clicking on links, opening attachments, or responding.

Good afternoon Monica and Kenny,

Hilcorp is planning to work on the CLEVELAND 4S (API # 3004534777) P&A in the near future.

I have attached the approved P&A NOI, as well as an updated procedure based on the COAs in the approved NOI.

Based on the COAs, Hilcorp requests the following adjustments to the approved procedure:

- **PLUG #1a: 18sx of Class G Cement (15.8 PPG, 1.15 yield); PC Top @ 2,169' | FRD Perfs @ 2,033' | FRD Top @ 1,945' | KRD Top @ 1,422' | OJO Top @ 1,248':**
 - Pump an 18 sack balanced cement plug beneath the 4-1/2" CICR inside the casing (est. **TOC @ +/- 1,995'** & est. **BOC @ +/- 2,219'**).
 - *Note that the cement volume to be pumped below the CICR @ 1,995' is equivalent to the amount to cover 50' below the PC Top @ 2,169' (18sx total).
- All other plugs remain the same.
- *Monica, please note that the original approved NOI shows that Hilcorp is planning to perforate 50' below the Nacimiento top (Perfs will be @ 377').
- Please see the revised procedure attached and below. The updated Proposed P&A wellbore schematic is also attached.



HILCORP ENERGY COMPANY
CLEVELAND 4S
P&A NOI

API #: 3004534777

JOB PROCEDURES

1. Contact NMOCD and BLM (where applicable) 24 hours prior to MIRU.
2. Hold pre-job safety meeting. Verify cathodic is off. Comply with all NMOCD, BLM, and HEC safety and environmental reg
3. MIRU service rig and associated equipment; POOH w/ rods & pump; NU and test BOP; TOOH w/ tubing.
4. Set a 4-1/2" CICR at +/- 1,995' to isolate the FRD Perfs. Establish injection.
5. **PLUG #1a: 18sx of Class G Cement (15.8 PPG, 1.15 yield); PC Top @ 2,169' | FRD Perfs @ 2,033' | FRD Top @ 1,9**
 Pump an 18 sack balanced cement plug beneath the 4-1/2" CICR inside the casing (est. TOC @ +/- 1,995' & est. BOC @
 pumped below the CICR @ 1,995' is equivalent to the amount to cover 50' below the PC Top @ 2,169' (18sx total)
6. Load the well as needed. Pressure test the casing above the plug to 560 psig.
7. RU Wireline. Run CBL. Record Top of Cement. All subsequent plugs below are subject to change pending CBL results.
8. PU & TIH w/ work string to +/- 1,995'.
9. **PLUG #1b: 66sx of Class G Cement (15.8 PPG, 1.15 yield); PC Top @ 2,169' | FRD Perfs @ 2,033' | FRD Top @ 1,9**
 Pump a 66 sack balanced cement plug on top of the CICR inside the 4-1/2" casing (est. TOC @ +/- 1,148' & est. BOC @
 work string. *Note cement plug lengths & volumes account for excess.
10. TOOH w/ work string. TIH and perforate squeeze holes @ +/- 377'. TIH with tubing/work string. Establish circulation.
11. **PLUG #2: 66sx of Class G Cement (15.8 PPG, 1.15 yield); NAC Top @ 327' | Surf. Casing Shoe @ 132':**
 Pump 22sx of cement in the 4-1/2" casing X 6-1/4" open hole annulus (est. TOC @ +/- 132' & est. BOC @ +/- 377'). Conti
 casing annulus (est. TOC @ +/- 0' & est. BOC @ +/- 132'). Pump a 30 sack balanced cement plug inside the 4-1/2" casing
 4 hrs, tag TOC w/ work string.
12. ND BOP, cut off casing below casing flange. Top off cement in surface casing annulus, if needed. Install a P&A marker wit
 off location, cut off anchors, and restore location.

Do the NMOCD and BLM approve of the revised procedure?

Thanks,

John LaMond

Operations Engineer – Technical Services

Hilcorp Energy Company

1111 Travis

Houston, TX 77002

346-237-2210 (Office)

District I
1625 N. French Dr., Hobbs, NM 88240
Phone:(575) 393-6161 Fax:(575) 393-0720
District II
811 S. First St., Artesia, NM 88210
Phone:(575) 748-1283 Fax:(575) 748-9720
District III
1000 Rio Brazos Rd., Aztec, NM 87410
Phone:(505) 334-6178 Fax:(505) 334-6170
District IV
1220 S. St Francis Dr., Santa Fe, NM 87505
Phone:(505) 476-3470 Fax:(505) 476-3462

State of New Mexico
Energy, Minerals and Natural Resources
Oil Conservation Division
1220 S. St Francis Dr.
Santa Fe, NM 87505

CONDITIONS

Action 394779

CONDITIONS

Operator: HILCORP ENERGY COMPANY 1111 Travis Street Houston, TX 77002	OGRID: 372171
	Action Number: 394779
	Action Type: [C-103] Sub. Plugging (C-103P)

CONDITIONS

Created By	Condition	Condition Date
mkuehling	CBL in log file - well plugged 10/21/2024	11/6/2024