

Submit a Copy To Appropriate District  
Office  
District I – (575) 393-6161  
1625 N. French Dr., Hobbs, NM 88240  
District II – (575) 748-1283  
811 S. First St., Artesia, NM 88210  
District III – (505) 334-6178  
1000 Rio Brazos Rd., Aztec, NM 87410  
District IV – (505) 476-3460  
1220 S. St. Francis Dr., Santa Fe, NM  
87505

State of New Mexico  
Energy, Minerals and Natural Resources

Form C-102  
Revised July 18, 2013

OIL CONSERVATION DIVISION  
1220 South St. Francis Dr.  
Santa Fe, NM 87505

WELL API NO. 30-025-53249
5. Indicate Type of Lease STATE <input checked="" type="checkbox"/> FEE <input type="checkbox"/>
6. State Oil & Gas Lease No.
7. Lease Name or Unit Agreement Name FOXTAIL STATE COM
8. Well Number 801H
9. OGRID Number 331595
10. Pool name [55640] SCHARB; WOLFCAMP

<b>SUNDRY NOTICES AND REPORTS ON WELLS</b> (DO NOT USE THIS FORM FOR PROPOSALS TO DRILL OR TO DEEPEN OR PLUG BACK TO A DIFFERENT RESERVOIR. USE "APPLICATION FOR PERMIT" (FORM C-101) FOR SUCH PROPOSALS.)	
1. Type of Well: Oil Well <input checked="" type="checkbox"/> Gas Well <input type="checkbox"/> Other <input type="checkbox"/>	7. Lease Name or Unit Agreement Name FOXTAIL STATE COM
2. Name of Operator FRANKLIN MOUNTAIN ENERGY 3, LLC	8. Well Number 801H
3. Address of Operator 44 COOK STREET, SUITE 1000, DENVER, CO 80206	9. OGRID Number 331595
4. Well Location Unit Letter ___ N ___ : ___ 71 ___ feet from the ___ SOUTH ___ line and ___ 1904 ___ feet from the ___ WEST ___ line Section 5 Township 19S Range 35E NMPM County Lea	10. Pool name [55640] SCHARB; WOLFCAMP
11. Elevation (Show whether DR, RKB, RT, GR, etc.) 3961	

12. Check Appropriate Box to Indicate Nature of Notice, Report or Other Data

NOTICE OF INTENTION TO:

PERFORM REMEDIAL WORK ☐ PLUG AND ABANDON ☐  
 TEMPORARILY ABANDON ☐ CHANGE PLANS ☒  
 PULL OR ALTER CASING ☐ MULTIPLE COMPL ☐  
 DOWNHOLE COMMINGLE ☐  
 CLOSED-LOOP SYSTEM ☐  
 OTHER: ☐

SUBSEQUENT REPORT OF:

REMEDIAL WORK ☐ ALTERING CASING ☐  
 COMMENCE DRILLING OPNS. ☐ P AND A ☐  
 CASING/CEMENT JOB ☐  
 OTHER: ☐

13. Describe proposed or completed operations. (Clearly state all pertinent details, and give pertinent dates, including estimated date of starting any proposed work). SEE RULE 19.15.7.14 NMAC. For Multiple Completions: Attach wellbore diagram of proposed completion or recompletion.

Franklin Mountain Energy, LLC (FME), Operator of the above captioned well, respectfully submits the attached, updated, C-102 for OCD record.

Spud Date:

Rig Release Date:

I hereby certify that the information above is true and complete to the best of my knowledge and belief.

SIGNATURE  TITLE Dir. Ops Planning & Regulatory DATE 9/4/2024

Type or print name Rachael Overbey E-mail address: roverbey@fmellc.com PHONE: 303.570.4057

**For State Use Only**

APPROVED BY: TITLE DATE

Conditions of Approval (if any):

**District I**  
1625 N. French Dr., Hobbs, NM 88240  
Phone: (575) 393-6161 Fax: (575) 393-0720

**District II**  
811 S. First St., Artesia, NM 88210  
Phone: (575) 748-1283 Fax: (575) 748-9720

**District III**  
1000 Rio Brazos Road, Aztec, NM 87410  
Phone: (505) 334-6178 Fax: (505) 334-6170

**District IV**  
1220 S. St. Francis Dr., Santa Fe, NM 87505  
Phone: (505) 476-3460 Fax: (505) 476-3462

State of New Mexico  
Energy, Minerals & Natural Resources Department  
OIL CONSERVATION DIVISION  
1220 South St. Francis Dr.  
Santa Fe, NM 87505

Form C-102  
Revised August 1, 2011  
Submit one copy to appropriate  
District Office

X AMENDED REPORT

## WELL LOCATION AND ACREAGE DEDICATION PLAT

<sup>1</sup> API Number 30-025-53249		<sup>2</sup> Pool Code 55640	<sup>3</sup> Pool Name SCHARB; WOLFCAMP
<sup>4</sup> Property Code 336100	<sup>5</sup> Property Name FOXTAIL STATE COM		<sup>6</sup> Well Number 801H
<sup>7</sup> OGRID No. 331595	<sup>8</sup> Operator Name FRANKLIN MOUNTAIN ENERGY 3, LLC		<sup>9</sup> Elevation 3861.7'

## <sup>10</sup>Surface Location

UL or lot no. N	Section 5	Township 19S	Range 35E	Lot Idn	Feet from the 71	North/South line SOUTH	Feet from the 1904	East/West line WEST	County LEA
--------------------	--------------	-----------------	--------------	---------	---------------------	---------------------------	-----------------------	------------------------	---------------

<sup>11</sup> Bottom Hole Location If Different From Surface

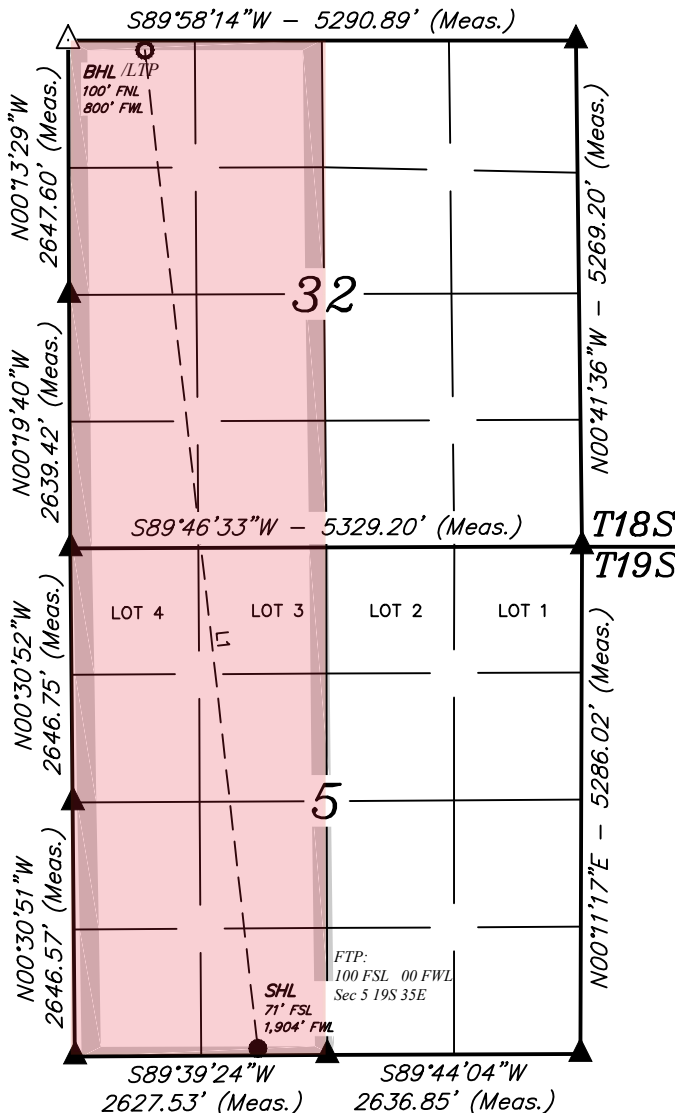
UL or lot no. D	Section 32	Township 18S	Range 35E	Lot 1dn	Feet from the 100	North/South line NORTH	Feet from the 800	East/West line WEST	County LEA
<sup>12</sup> Dedicated Acres 639.25		<sup>13</sup> Joint or Infill		<sup>14</sup> Consolidation Code		<sup>15</sup> Order No.			

No allowable will be assigned to this completion until all interests have been consolidated or a non-standard unit has been approved by the division.

<b>NAD 83 (SURFACE HOLE LOCATION)</b>
<b>LATITUDE</b> = 32°40'57.30"N (32.682583°)
<b>LONGITUDE</b> = -103°28'54.85"E (-103.481903°)
<b>NAD 27 (SURFACE HOLE LOCATION)</b>
<b>LATITUDE</b> = 32°40'56.85"N (32.682460°)
<b>LONGITUDE</b> = -103°28'53.08"E (-103.481412°)
<b>STATE PLANE NAD 83 (N.M. EAST)</b>
<b>N:</b> 613106.06' <b>E:</b> 803300.65'
<b>STATE PLANE NAD 27 (N.M. EAST)</b>
<b>N:</b> 613042.18' <b>E:</b> 762120.56'

<b>NAD 83 (BOTTOM HOLE LOCATION)</b>
<b>LATITUDE</b> = 32°42'40.21" (32.711169°)
<b>LONGITUDE</b> = -103°29'08.16" (-103.485599°)
<b>NAD 27 (BOTTOM HOLE LOCATION)</b>
<b>LATITUDE</b> = 32°42'39.76" (32.711045°)
<b>LONGITUDE</b> = -103°29'06.38" (-103.485106°)
<b>STATE PLANE NAD 83 (N.M. EAST)</b>
<b>N:</b> 623496.98' <b>E:</b> 802080.34'
<b>STATE PLANE NAD 27 (N.M. EAST)</b>
<b>N:</b> 623432.74' <b>E:</b> 760900.58'

LINE TABLE		
LINE	DIRECTION	LENGTH
L1	N06°27'18"W	10464.02'



## 17 OPERATOR CERTIFICATION

I hereby certify that the information contained herein is true and complete to the best of my knowledge and belief, and that this organization either owns a working interest or unleased mineral interest in the land including the proposed bottom hole location or has a right to drill this well at this location pursuant to a contract with an owner of such a mineral or working interest, or to a voluntary pooling agreement or a compulsory pooling order heretofore entered by the division.

Signature Nicholas Verkey Date 7/22/2024

Rachael Overbey

Printed Name \_\_\_\_\_

roverbey@fmellc.com

E-mail Address

## 18 SURVEYOR CERTIFICATION

*I hereby certify that the well location shown on this plat was plotted from field notes of actual surveys made by me or under my supervision, and that the same is true and correct to the best of my belief.*

JANUARY 5, 2024

---

Date of Survey

Signature and Seal of Professional Surveyor:



Certificate Number:

NOTE:

- Distances referenced on plat to section lines are perpendicular.
- Basis of Bearings is a Transverse Mercator Projection with a Central Meridian of W103°53'00" (NAD 83)
- Section breakdown information for this plat may be obtained from Uintah Engineering & Land Surveying


● = SURFACE HOLE LOCATION

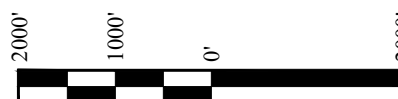
⊙ = BOTTOM HOLE LOCATION

▲ = SECTION CORNER LOCATED

△ = SECTION CORNER  
RE-ESTABLISHED.

(Not Set on Ground.)

 = DRILLING SPACING UNIT



SCALE

DRAWN BY: T.J.R. 01-11-24

Sante Fe Main Office  
Phone: (505) 476-3441

General Information  
Phone: (505) 629-6116

Online Phone Directory  
<https://www.emnrd.nm.gov/ocd/contact-us>

State of New Mexico  
Energy, Minerals and Natural Resources  
Oil Conservation Division  
1220 S. St Francis Dr.  
Santa Fe, NM 87505

CONDITIONS

Action 380567

CONDITIONS

Operator: Franklin Mountain Energy 3, LLC 44 Cook Street Denver, CO 80206	OGRID: 331595
	Action Number: 380567
	Action Type: [C-103] NOI Change of Plans (C-103A)

CONDITIONS

Created By	Condition	Condition Date
pkautz	None	11/18/2024