

Santa Fe Main Office  
Phone: (505) 476-3441 Fax: (505) 476-3462  
General Information  
Phone: (505) 629-6116

Online Phone Directory Visit:  
<https://www.emnrd.nm.gov/ocd/contact-us/>

State of New Mexico  
Energy, Minerals and Natural Resources

OIL CONSERVATION DIVISION  
1220 South St. Francis Dr.  
Santa Fe, NM 87505

Form C-103  
Revised July 18, 2013

<p><b>SUNDRY NOTICES AND REPORTS ON WELLS</b> (DO NOT USE THIS FORM FOR PROPOSALS TO DRILL OR TO DEEPEN OR PLUG BACK TO A DIFFERENT RESERVOIR. USE "APPLICATION FOR PERMIT" (FORM C-101) FOR SUCH PROPOSALS.)</p>		<p>WELL API NO. <b>30-005-62801</b></p>
<p>1. Type of Well: Oil Well <input checked="" type="checkbox"/> Gas Well <input type="checkbox"/> Other <input type="checkbox"/></p>		<p>5. Indicate Type of Lease STATE <input checked="" type="checkbox"/> FEE <input type="checkbox"/></p>
<p>2. Name of Operator <b>SOLIS PARTNERS, LLC</b></p>		<p>6. State Oil &amp; Gas Lease No. LG-5246-0003</p>
<p>3. Address of Operator 4501 SANTA ROSA DRIVE, MIDLAND, TX 79707</p>		<p>7. Lease Name or Unit Agreement Name PATHFINDER AFT STATE</p>
<p>4. Well Location Unit Letter <u>O</u> : <u>660</u> feet from the <u>SOUTH</u> line and <u>2,310</u> feet from the <u>EAST</u> line Section <u>21</u> Township <u>10S</u> Range <u>27E</u> NMPM County <u>CHAVES</u></p>		<p>8. Well Number <u>10</u></p>
<p>11. Elevation (Show whether DR, RKB, RT, GR, etc.) 3,827 GL</p>		<p>9. OGRID Number <u>330238</u></p>
<p>10. Pool name or Wildcat DIABLO, SAN ANDRES</p>		

12. Check Appropriate Box to Indicate Nature of Notice, Report or Other Data

NOTICE OF INTENTION TO:		SUBSEQUENT REPORT OF:	
PERFORM REMEDIAL WORK <input type="checkbox"/>	PLUG AND ABANDON <input type="checkbox"/>	REMEDIAL WORK <input checked="" type="checkbox"/>	ALTERING CASING <input type="checkbox"/>
TEMPORARILY ABANDON <input type="checkbox"/>	CHANGE PLANS <input type="checkbox"/>	COMMENCE DRILLING OPNS. <input type="checkbox"/>	P AND A <input type="checkbox"/>
PULL OR ALTER CASING <input type="checkbox"/>	MULTIPLE COMPL <input type="checkbox"/>	CASING/CEMENT JOB <input type="checkbox"/>	
DOWNHOLE COMMINGLE <input type="checkbox"/>			
CLOSED-LOOP SYSTEM <input type="checkbox"/>			
OTHER: <input type="checkbox"/>		OTHER: <input type="checkbox"/>	

13. Describe proposed or completed operations. (Clearly state all pertinent details, and give pertinent dates, including estimated date of starting any proposed work). SEE RULE 19.15.7.14 NMAC. For Multiple Completions: Attach wellbore diagram of proposed completion or recompletion.

Solis Partners, LLC successfully plugged uphole from previously TA'd Fusselman perfs, perforated, hydraulically completed, and is currently producing from San Andres formation from 1,958' to 2,095'.

PLEASE SEE ATTACHMENTS

Spud Date:

Rig Release Date:

10/15/2024

I hereby certify that the information above is true and complete to the best of my knowledge and belief.

SIGNATURE



TITLE

ENGINEER

DATE 11/26/2024

Type or print name SCOTT PARSONS E-mail address: SCOTT.PARSONS@SOLISPARTNERSLLC.COM PHONE: (817) 996-9270  
**For State Use Only**

APPROVED BY:

TITLE

DATE

Conditions of Approval (if any):



## OPERATIONS SUMMARY

Well Name **Pathfinder AFT State #010**  
 API # 30-005-62801  
 Location Unit O-Sec 21, T-10-S, R-27-E

**OPERATION:**  
**STATUS:**

**Uphole San Andres Completion**  
**Producing from San Andres Formation**

<u>Day</u>	<u>Date</u>	<u>Operation</u>
1	Thursday, September 19, 2024	Spot equipment, MIRU, Re enter well; Pressure tested 7-5/8" N-80, CIBP @ 6,240', 550# for 30 minutes, held, good; <b>Plug #1:</b> RIH tbg, Set tbg @ 5,633', Spotted 25 sx cmt Class C, WOC 4 hrs, Tagged TOC @ 5,532'; <b>Plug #2:</b> Set tbg @ 4,900', Spotted 25 sx cmt Class C, WOC overnight.
2	Friday, September 20, 2024	Tagged cmt plug @ 4,802'; <b>Plug #3:</b> Set tbg @ 2,650'
3	Monday, September 23, 2024	<b>Plug #3 (cont'd):</b> Spotted 25 sx cmt Class C, WOC, Tagged TOC @ 2,548'; RIH CIBP, Tbg, CIBP accidentally set at 45', POOH tbg, stinger
4	Tuesday, September 24, 2024	<b>CIBP (DO):</b> RIH bit, collar, tbg, drilling out CIBP
5	Wednesday, September 25, 2024	<b>CIBP (DO):</b> Drilling out CIBP, minimal returns at surface
6	Thursday, September 26, 2024	<b>CIBP (DO):</b> Drilling out CIBP, minimal returns at surface
7	Friday, September 27, 2024	<b>CIBP (DO):</b> Drilling out CIBP, minimal returns at surface
8	Monday, September 30, 2024	<b>CIBP (DO):</b> Drilling out CIBP, minimal returns at surface
9	Tuesday, October 1, 2024	<b>CIBP (DO):</b> Drilling out CIBP, minimal returns at surface
10	Wednesday, October 2, 2024	<b>CIBP (DO):</b> CIBP Drilled Out, RIH tbg, Tagged TOC @ 2,548'
11	Thursday, October 3, 2024	RIH CIBP, Tbg; Set CIBP @ 2,190', POOH Tbg; RU Cmt Pump, Spotted 35' cmt @ 2,190', WOC 4 hrs, Tagged TOC @ 2,155'
12	Friday, October 4, 2024	No Ops

- 13      Monday, October 7, 2024      **MIRU Renegade Wireline:**  
 Perforated:  
 • 1,958' - 1,963'  
 • 1,967' - 1,972'  
 • 1,974' - 1,977'  
 • 1,992' - 1,997'  
 • 2,004' - 2,009'  
 • 2,012' - 2,015'  
 • 2,018' - 2,022'  
 • 2,026' - 2,028'  
 • 2,041' - 2,044'  
 • 2,058' - 2,063'  
 • 2,072' - 2,074'  
 • 2,092' - 2,095'
- 2 spf; 57' of Perfs, 114 Holes  
 RDMO Renegade Wireline;  
 RIH 7-5/8" Treating Packer on 2-7/8" Tbg to 1,900'
- 14      Tuesday, October 8, 2024      MIRU CUDD for Acid Frac; Ops Plan to pump 11,400 gas 20% NEFE HCl (271.4 Bbls), 200.0 gal/ft of perfs (57' of Perfs)
- Pumped Acid Job Approx 146 Bbl Acid, Packer Fail, Fluid @ Reverse Pit, SHUT DOWN OPERATIONS.
- POOH Tbg, Packer, RIH Packer, Tbg, Set Packer @ 1,900', Pressured Up to Pump, Packer Fail, Fluid @ Reverse Pit, Shut Down Operations; RDMO CUDD.
- 15      Wednesday, October 9, 2024      No Ops
- 16      Thursday, October 10, 2024      MIRU CUDD for Acid Frac
- Pressured Up to Pump, Packer Fail, Fluid @ Reverse Pit, Shut Down Operations.
- Attempt to POOH Tbg, Packer, POOH 2 jts Tbg, Packer Stuck; Pushed Packer to Rathole (CIBP + Cmt Cap @ 2,155')
- 17      Friday, October 11, 2024      No Ops
- 18      Monday, October 14, 2024      POOH Tbg, Packer released from Packer; RIH 4 jts Tailpipe, Packer, Tbg; RIH Bit-Scraper Tool, Tagged @ 1,865', Not able to get thru; Packer Set @ 1,820' (Tailpipe @ 1,948', Top Perf @ 1,958');
- RIH Tbg to Bottom Perf @ 2,095', MIRU Foam Unit, Pumped, Circulated Acid-Foam 125 Bbl From Bottom Perf @ 2,095' to Reverse Pit, RDMO Foam Unit;

- 19 Tuesday, October 15, 2024 MIRU CUDD for Acid Frac; Ops Plan to pump 11,400 gas 20% NEFE HCl (271.4 Bbls), 200.0 gal/ft of perfs (57' of Perfs); Fluid to Recover 320 Bbl
- Pumped 271 Bbl Acid, 200 Balls;  
 Max Pressure: 2,540#, Avg Treating Pressure: 2,047#  
 ISIP: 1,751#  
 5 Min: 554#  
 10 Min: 350#  
 15 Min: 276#;
- Well Shut In Overnight
- 20 Wednesday, October 16, 2024 Well Shut In;
- Assembled Surface Equipment, Wellhead, Pumping Unit, Flowline, Electrical
- 21 Monday, October 21, 2024 Arrive to location. ND BOP, Installed WH flange, Pumping Tee;  
 RIH Tbg, pump, rods. Stroke pump, good action, Pumping to Pathfinder Facility.  
 Rig Down Move Workover Rig to Pathfinder #12.
- Tubing:  
 2-3/8" Pup-Mud jt, SN @ 2,079', 2-7/8" Tbg: 66 jts;  
 Pump, Rods Assembly:  
 2 x 1-1/2 x 12 Pump, 4-1-1/2" Wt Bars, 54-1" FG Rods w/ 7/8" Pin, 1-6' 7/8" Steel, 1-4' 7/8" Steel, 8' Liner, 16' Polish Rod
- |        |   |
|--------|---|
| 21-Oct | Pumping: 0 Oil, 7 Water, 0 Gas (12 Hr Test) |
| 22-Oct | Pumping: 0 Oil, 15 Water, 0 Gas             |
| 23-Oct | Pumping: 0 Oil, 15 Water, 0 Gas             |
| 24-Oct | Pumping: 2 Oil, 12 Water, Trace Gas         |
| 25-Oct | Pumping: 4 Oil, 11 Water, Trace Gas         |
| 26-Oct | Pumping: 4 Oil, 11 Water, Trace Gas         |
| 27-Oct | Pumping: 4 Oil, 11 Water, Trace Gas         |
| 28-Oct | Pumping: 4 Oil, 11 Water, Trace Gas         |
| 29-Oct | Pumping: 3 Oil, 13 Water, Trace Gas         |
| 30-Oct | Pumping: 3 Oil, 13 Water, Trace Gas         |



# WELLBORE DIAGRAM

Status: Producing from San Andres

Updated October 22, 2024

Pathfinder AFT State #10

Section 21-O, T10S, R27E

API# 30-005-62801

<b>Acid Frac</b>
17,000 gal (405 Bbl) 20% NEFE HCl 5 Bbl/min w/ Balls

<b>Perfs @ 1,958' - 2,095'</b>
138' Gross Interval (57' Net) 2 spf, 114 Holes 21.5 gram charge, .48" entry, 39.22" pen

CIBP @ 2,190' + 35' Cmt

Plug #3

TOC @ 2,548'

Spotted 25 sx Class C @ 2,650'

Plug #2

TOC @ 4,802'

Spotted 25 sx Class C @ 4,900'

Plug #1

TOC @ 5,532'

Spotted 25 sx Class C @ 5,633'

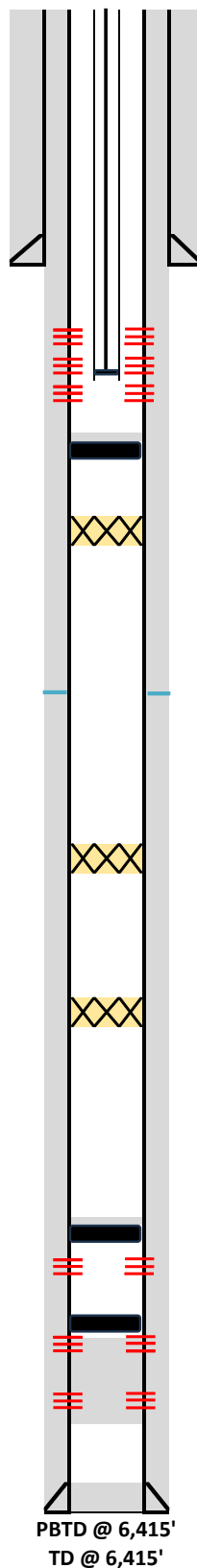
TA'd 12/13/2019:

35' Cement on CIBP

CIBP @ 6,275'

Cmt Retainer @

6,340'



PBSD @ 6,415'

TD @ 6,415'

**14-3/4" Hole**

Surface Csg: 10-3/4", 40.5#, J-55;

Csg Set @ 1,005'

Cmt'd w/ 650 sx, TOC @ Surface;

Circ'd 55 sx to Surface

**Production Tubing, Pump, Rods**

66 jts - 2-7/8" Tbg, SN @ 2,079'

2" x 1-1/2" x 12' Pump, 4 Wt Bars, 54-1" FG Rods, 10' 7/8"  
Rods, 8' Liner, 16' Polish Rod

Stage 2: TOC @ Surface

Circ'd 10 sx to Surface

DV Tool @ 3,948'

Stage 1: TOC @ DV Tool

Circ'd 100 sx to Surface

**Casing Detail (WO Rpt Dtd 02/15/1991)**

7-5/8", [Top of Well to Down]

Jts	Grade	ppf	Length (ft)	Depth (ft)
3	N-80	29.7#	130	130
102	J-55	26.4#	4,343	4,473
26	N-80	26.4#	1,131	5,603
20	N-80	29.7#	818	6,421

Fusselman Perfs @

6,312'-15'; 6,318'-19'; 6,322'-27'; 6,331'-32'

Fusselman Perfs SQUEEZED @

6,350'-60',

6,376'-84'

**9-1/2" Hole**

Production Csg: 7-5/8", 29.5# &amp; 26.4#, N-80;

Csg Set @ 6,415'

Cmt'd w/ 1,600 sx

Sante Fe Main Office  
Phone: (505) 476-3441

General Information  
Phone: (505) 629-6116

Online Phone Directory  
<https://www.emnrd.nm.gov/oed/contact-us>

State of New Mexico  
Energy, Minerals and Natural Resources  
Oil Conservation Division  
1220 S. St Francis Dr.  
Santa Fe, NM 87505

CONDITIONS

Action 407166

CONDITIONS

Operator:  Solis Partners, L.L.C. 4501 SANTA ROSA DR MIDLAND, TX 79707	OGRID:  330238
	Action Number:  407166
	Action Type:  [C-103] Sub. Workover (C-103R)

CONDITIONS

Created By	Condition	Condition Date
dmcclure	Please submit completion sundries as C-103T in the future.	12/6/2024