

**Caza Petroleum, Inc.**  
**Mad River 13 State Com 11H**  
**Rig: Citadel 4**



**DV Intermediate**  
**T-39739**  
**County: Eddy**  
**Supervisor: Ruben Soto**

## Cementing Job Log

Date	Time	Description	Rate (BPM)	Volume (BBL)	Pressure (PSI)	Details of Operation and Procedure
08/08/2022	07:00	Called Out				Hard time @ 1:30 pm. Caza 9 5/8 DV Intermediate.
08/08/2022	10:15	Load Up For Job				All equipment loaded and ready to travel.
08/08/2022	10:20	Conduct Meetings				Journey management.
08/08/2022	10:30	Depart For Job				All equipment on route to location.
08/08/2022	12:30	Arrived on Location				All equipment on location, all cement on location.
08/08/2022	12:35	Rigs Progress at Arrival				Rig TIH with casing.
08/08/2022	12:40	Discuss Job With Customer				Hole 12.25", TD 7948', TP 7653.74', 9-5/8 40# HCL 80 0'-6580.74', 9-5/8" 47# HCL 80 6580.47' to 7653.74', Shoe 48.84', Prev casing 13.375" 54.5# J55 @ 745', DV set @ 2107.1', mud 9#, displace with fresh water.
08/08/2022	13:00	Conduct Meetings				Discuss rig up JSA with cement crew.
08/09/2022	03:45	Other				Rig stop circulating well @ 3:45 am.
08/09/2022	04:00	Casing On Bottom				Casing on bottom.
08/09/2022	04:05	Conduct Meetings				Discuss cement had JSA with cement crew.
08/09/2022	04:25	Install Cement Head				Cement head installed, equipment rigged up. Caza waiting on tools rig.
08/09/2022	05:00	Discuss Job With Customer				Customer change volumes of cement on first and second stage. Stage 1 100 bbls lead @ 12.8 ppg and 107 bbls tail 14.8 ppg.
08/09/2022	07:40	Conduct Meetings				Discuss rig up JSA with cement crew.
08/09/2022	07:50	Fill Lines	3	3	100	Fill lines with fresh water.
08/09/2022	07:53	Pressure Test	0.2	0.2	5210	Pressure test pumps and lines up to 5210 psi. Good test.
08/09/2022	07:57	Start Spacer	4	1	1400	Fresh water spacer.
08/09/2022	08:25	Spacer Complete	3	70	1680	Fresh water spacer.
08/09/2022	08:30	Other				Discuss job with customer, discuss high pressure issues.
08/09/2022	09:20	Other	1	2	2600	Inflate packer with 2600 psi.
08/09/2022	09:28	Start Cement	6	1	2000	Lead cement @ 12.8 ppg weighted with mud scales.
08/09/2022	09:42	Cement Complete	6	100	1480	Lead cement @ 12.8 ppg weighted with mud scales.
08/09/2022	09:43	Start Cement	5	1	1290	Tail cement @ 14.8 ppg weighted with mud scales.
08/09/2022	10:04	Cement Complete	4	107	930	Tail cement @ 14.8 ppg weighted with mud scales.
08/09/2022	10:06	Release Plug				Load and release 9-5/8 top plug provided by Summit.
08/09/2022	10:07	Start Displacement	6	1	900	Fresh water displacement.
08/09/2022	10:36	Decrease Rate	4	140	830	Slow down to 4 BPM plug going through DV tool.
08/09/2022	10:40	Increase Rate	6	160	1000	160 bbls in to displacement.
08/09/2022	11:49	Decrease Rate	5	520	1080	Slow down to bump plug. 520 bbls in to displacement.
08/09/2022	12:00	Shut Down	5	574	1000	Displacement completed 574 bbls.



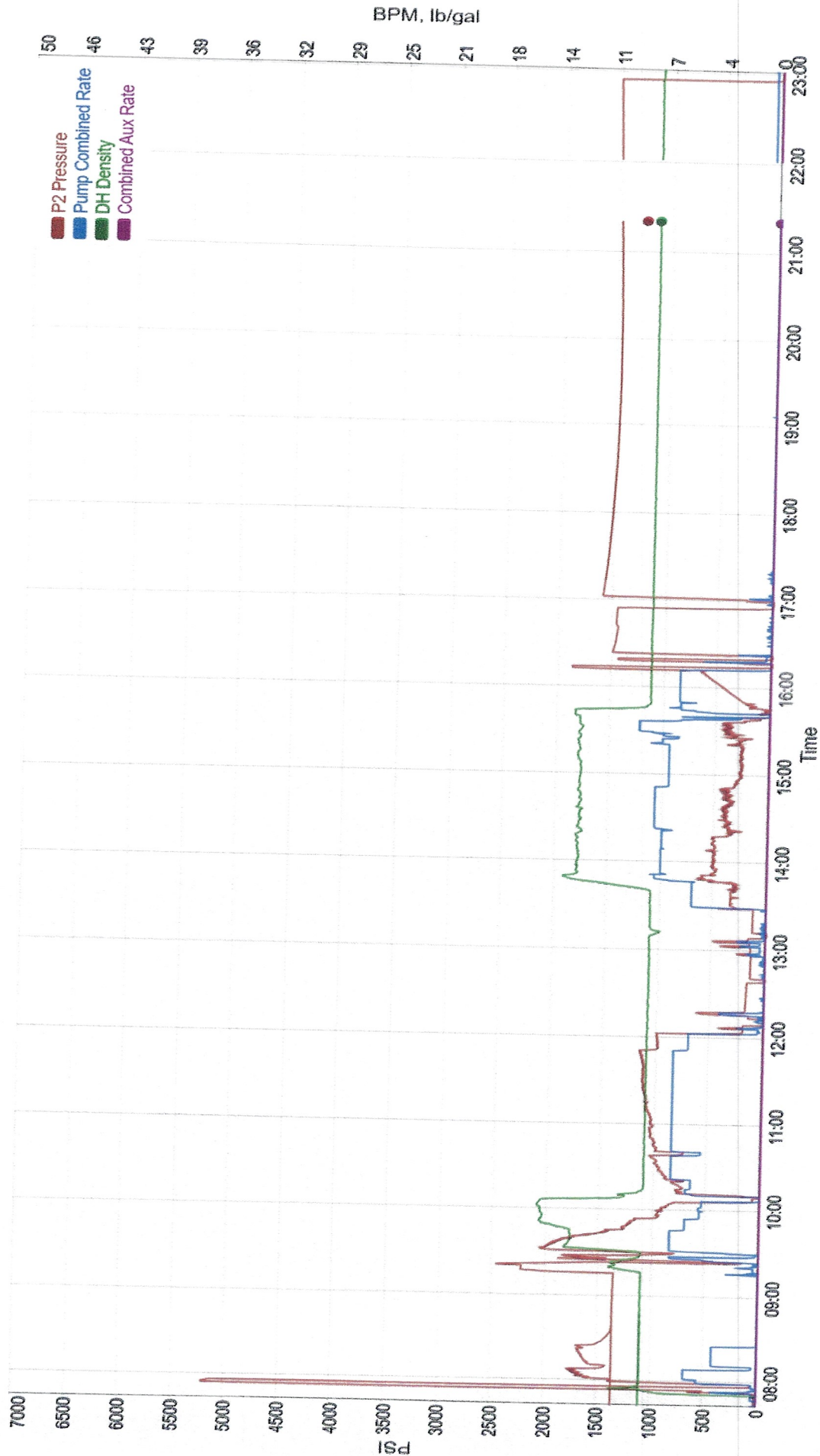
08/09/2022	12:04	Other	1.5	1.5	400	Pump 1.5 bbls over displacement, plug didn't bump.
08/09/2022	12:12	Check Floats		5		Check floats with 5 bbls back. Floats didn't held.
08/09/2022	12:14	Other	3	5	560	Pump 5 bbls and shut down.
08/09/2022	12:40	Other				Drop contingency plug.
08/09/2022	13:00	Pressure Up	1.5	1.5	400	Intent to pressure. Didn't pressure up.
08/09/2022	13:10	Other				Release bomb to open DV tool.
08/09/2022	13:27	Pressure Up	1	1	680	Pressure up to open DV tool. Open DV tool with 680 psi.
08/09/2022	13:28	Start Spacer	5	1	260	Fresh water spacer.
08/09/2022	13:40	Spacer Complete	3	40	260	Fresh water spacer.
08/09/2022	13:41	Start Cement	7	1	560	Tail cement @ 12.7 ppg weighted with mud scales.
08/09/2022	15:34	Other	7	780	360	Cement back to surface 780 bbls in to cement job. Calculated 179 bbls back = 481 sks.
08/09/2022	15:38	Cement Complete	7	800	360	Tail cement @ 12.7 ppg weighted with mud scales.
08/09/2022	15:39	Release Plug				Load and release 9-5/8 top plug provided by Summit.
08/09/2022	15:40	Start Displacement	6	1	300	Fresh water displacement.
08/09/2022	16:08	Decrease Rate	5	150	600	Slow down to 5 BPM to bump plug. 150 bbls in to displacement.
08/09/2022	16:10	Bump Plug	5	159	1820	Bump pressure went from 600 psi to 1820 psi.
08/09/2022	16:20	Check Floats		4		Check floats with 4 bbls back. floats didn't held.
08/09/2022	16:22	Pressure Test	1	1	1500	Pressure up for 30 minutes casing test.
08/09/2022	16:52	Check Floats		4		Check floats with 4 bbls back floats did not held.
08/09/2022	17:00	Pressure Up	1	1	1600	Pressure up to 1600 psi. Holding pressure 6 hrs WOC.
08/09/2022	22:50	Conduct Meetings				Discuss rig down JSA with cement crew.
08/09/2022	23:00	Release Pressure		1	1529	Release pressure with 1 bbls back. Floats held.
08/09/2022	23:25	Rig Equipment				All equipment rigged down loaded and ready to travel.
08/09/2022	23:30	Job Complete				All equipment leaving location.

Cement Heights and Tops		
Slurry Type	Cement Height	Cement Top
Spacer		
Lead CMT		3915
Tail CMT	1500	6500
Spacer - Stage 2		
Tail CMT - Stage 2	2103	0
Crew Members		
Field Supervisor	Ruben Soto	
	Alejandro Hernandez	
Bulk Hand	Andres Morales	
Field Supervisor	Roberto Garcia	
	Matthew Coffield	
	Juan Zavala	
Casing Information		
	Previous Casing	Hole & Casing Info
Hole Size 1		12.25
MD:		7900
TVD:		7900
Casing Size	13.375	9.625
Casing Grade		HCL80
Casing Length	750	7936
Casing Weight	54.50	40.00
Casing ID		8.835

Spacer					
	PPG		YLD		H2O
Lead CMT					
12.8	PPG	1.68	YLD	8.35	H2O
			1200	Sacks	35/65 Poz C
			5	bwow	Sodium Chloride (Salt)
			6	%	Bentonite Gel
			0.4	%	CPT-503P
			0.65	%	CPT-25
Tail CMT					
14.8	PPG	1.33	YLD	6.32	H2O
			450	Sacks	Class C Cement
			0.3	%	D-3
			0.2	%	CPT-25
Spacer - Stage 2					
	PPG		YLD		H2O
Tail CMT - Stage 2					
12.7	PPG	2.09	YLD	11.44	H2O
			1900	Sacks	Class C Cement
			5	bwow	Sodium

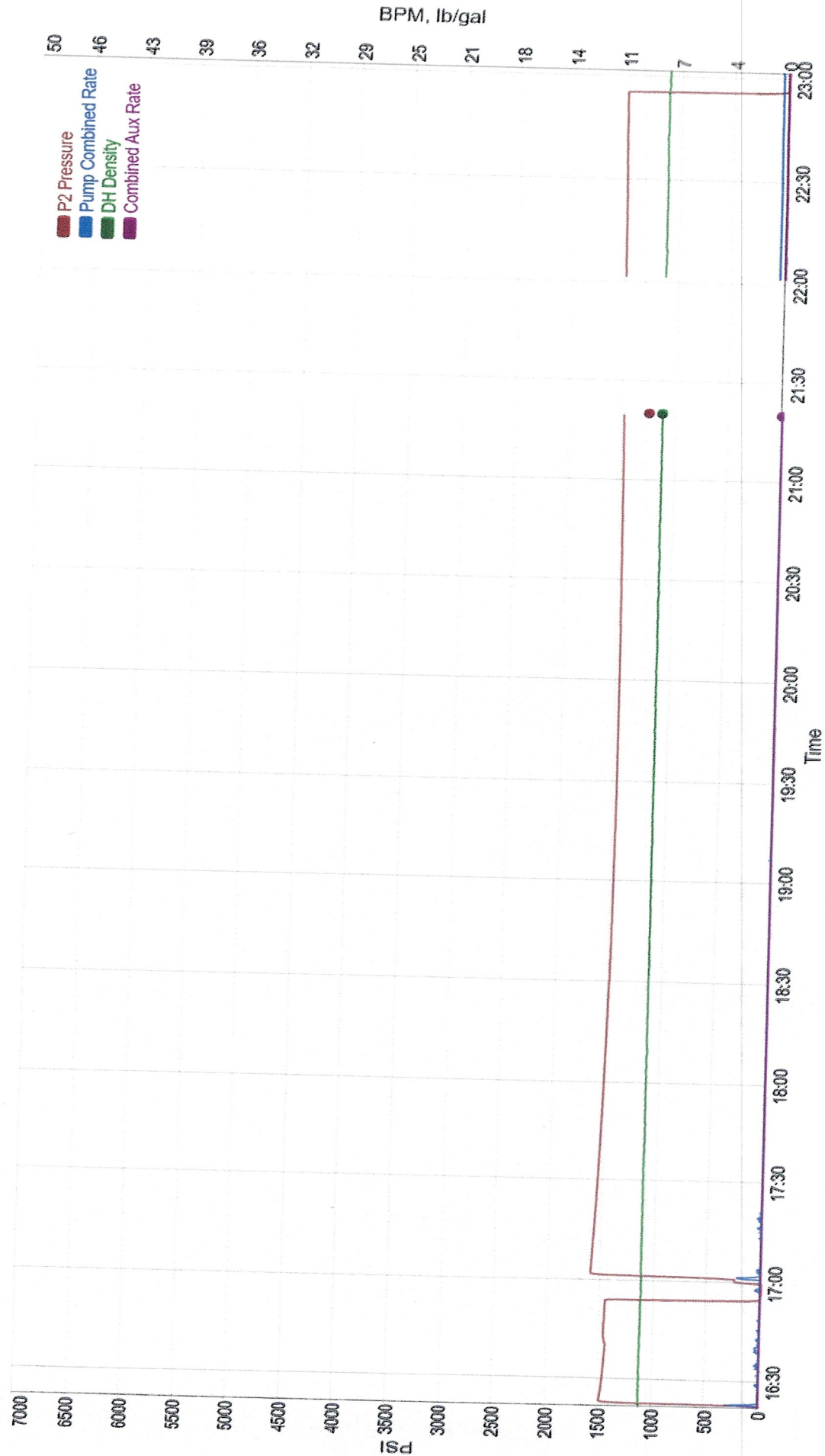
[illegible]

7:43 AM — 11:01 PM Aug 9, 2022  
Customer Name: Caza      Well ID: Mud River 11H      Ticket Number: 39739





4:21 PM — 11:01 PM Aug 9, 2022  
Customer Name: Caza      Well ID: Mud River 11H      Ticket Number: 39739



Office  
 District I – (575) 393-6161  
 1625 N. French Dr., Hobbs, NM 88240  
 District II – (575) 748-1283  
 811 S. First St., Artesia, NM 88210  
 District III – (505) 334-6178  
 1000 Rio Brazos Rd., Aztec, NM 87410  
 District IV – (505) 476-3460  
 1220 S. St. Francis Dr., Santa Fe, NM  
 87505

State of New Mexico  
 Energy, Minerals and Natural Resources

Form C-103  
 Revised July 18, 2013

OIL CONSERVATION DIVISION  
 1220 South St. Francis Dr.  
 Santa Fe, NM 87505

WELL API NO. 30-015-49642
5. Indicate Type of Lease STATE <input checked="" type="checkbox"/> FEE <input type="checkbox"/>
6. State Oil & Gas Lease No.
7. Lease Name or Unit Agreement Name <b>Mad River 13 State Com</b>
8. Well Number 11H
9. OGRID Number 249099
10. Pool name or Wildcat
11. Elevation (Show whether DR, RKB, RT, GR, etc.) 3103'GR

SUNDRY NOTICES AND REPORTS ON WELLS  
 (DO NOT USE THIS FORM FOR PROPOSALS TO DRILL OR TO DEEPEN OR PLUG BACK TO A DIFFERENT RESERVOIR. USE "APPLICATION FOR PERMIT" (FORM C-101) FOR SUCH PROPOSALS.)

1. Type of Well: Oil Well ☒ Gas Well ☐ Other ☐

2. Name of Operator  
Caza Oil and Gas, Inc

3. Address of Operator  
200 N. Lorraine St #1550., Midland, TX 79701

4. Well Location  
 Unit Letter **P**; **632** feet from the **south** line and **235** feet from the **east** line  
 Section **13** Township **24s** Range **27e** NMPM County **Eddy**

12. Check Appropriate Box to Indicate Nature of Notice, Report or Other Data

NOTICE OF INTENTION TO:

PERFORM REMEDIAL WORK ☐ PLUG AND ABANDON ☐  
 TEMPORARILY ABANDON ☐ CHANGE PLANS ☐  
 PULL OR ALTER CASING ☐ MULTIPLE COMPL ☐  
 DOWNHOLE COMMINGLE ☐  
 CLOSED-LOOP SYSTEM ☐  
 OTHER: ☒

SUBSEQUENT REPORT OF:

REMEDIAL WORK ☐ ALTERING CASING ☐  
 COMMENCE DRILLING OPNS. ☐ P AND A ☐  
 CASING/CEMENT JOB ☒  
 OTHER: ☐

13. Describe proposed or completed operations. (Clearly state all pertinent details, and give pertinent dates, including estimated date of starting any proposed work). SEE RULE 19.15.7.14 NMAC. For Multiple Completions: Attach wellbore diagram of proposed completion or recompletion.

7/31/2022 - Test surf casing to 1500psi, test good. Test BOP, test good. 8/8/2022 - Drill 12.25" hole to 7948'. Ran 9.625" 40# HCL80 BTC casing to 6591' and 47# to 7650'. Casing became stuck and couldn't go to bottom. DVT @ 2103 and ECP @ 2106. Cement stage 1 with 1200sx 12.8ppg 35/65 POZ C and 450sx 14.8ppg Class C. Plug did not bump. Dropped contingency plug. Would not pressure up. Open DV tool and cement stage 2 with 1900sx 12.7ppg Class C. **Circ 780sx**. Bump plug but floats did not hold. Held 1600psi on casing for 6 hours. Drill out DVT. Test casing, bad test. Drill out shoe track and close annular. Test failed. Pump balanced plug on bottom and squeeze leaving 100' cement in casing and 700' in the outside annulus. Hold pressure on casing for 10hrs. Test casing to 1500psi, test good. Drill out cement and 10' new formation. Perform FIT to 11ppg EMW.

Spud Date:

**7/17/2022**

Rig Release Date:

I hereby certify that the information above is true and complete to the best of my knowledge and belief.

SIGNATURE

TITLE

**Engineer**

DATE **8/30/2022**

Type or print name

**Steve Morris**

E-mail address:

steve.morris@morcoreengineering.com

PHONE:

**985-415-9729**

**For State Use Only**

APPROVED BY:

TITLE

DATE

Conditions of Approval (if any):

**Caza Petroleum, Inc.**  
**Mad River 13 State Com 11H**  
**Rig: Citadel 4**



**Squeeze**  
**T-39963**  
**County: Eddy**  
**Supervisor: Roberto Kelley**

### Cementing Job Log

Date	Time	Description	Rate (BPM)	Volume (BBL)	Pressure (PSI)	Details of Operation and Procedure
08/12/2022	00:00	Called Out				Crew got called out for cement job
08/12/2022	01:15	Load Up For Job				All equipment load up for job and double checked by crew members First job was Canceled Cement left on location
08/12/2022	02:00	Depart For Job				All equipment leaves towards location in a convoy manner
08/12/2022	04:30	Arrived on Location				All equipment arrives to location and gets spotted in
08/12/2022	04:36	Discuss Job With Customer				CM and cement supervisor discuss job numbers, job procedures, and job hazards
08/12/2022	04:44	Conduct Meetings				JSA rig up meeting executed with crew members about potential risk and hazards
08/12/2022	05:37	Other				CM ask for more cement for a total of 150SKS more
08/12/2022	07:00	Conduct Meetings				JSA road conditions meeting executed with crew members about potential risk and hazards
08/12/2022	10:00	Other				Cement arrives to location and gets spotted in
08/12/2022	12:54	Conduct Meetings				JSA safety meeting executed with all personal on location about job procedures and job hazards
08/12/2022	13:18	Fill Lines	3	3	100	FW was used to fill lines from cement pumps to drill head
08/12/2022	13:19	Pressure Test	1	0.3	5000	PSI test to 5000PSI conducted to test all NES equipment
08/12/2022	13:23	Start Spacer	4	1	170	Weight it spacer @10PPG started down hole verify by CM and mud scales
08/12/2022	13:32	Spacer Complete	4	17	230	Weight it spacer @10PPG complete to specs
08/12/2022	13:33	Start Cement	6	1	300	Tail cement @14.8PPG started down hole verify by CM and mud scales
08/12/2022	13:48	Cement Complete	6	103	350	Tail cement 435 sks @14.8PPG complete to specs
08/12/2022	13:49	Start Displacement	6	1	180	Oil base mud displacement started down hole verify by CM
08/12/2022	13:58	Complete	6	130	200	OBM displacement complete to specs
08/12/2022	13:59	Check Floats				Floats where checked into displacement tanks to observe pressure get bleed off
08/12/2022	14:04	Wash Out Pumps & Lines	4	15	100	Wash up pumps and lines to open top to make sure all equipment is clean
08/12/2022	14:25	Conduct Meetings				JSA rig down meeting executed with crew members about potential risk and hazards
08/12/2022	14:30	Rig Equipment				Started rigging down all NES equipment necessary for cement job and got equipment accounted for
08/12/2022	15:25	Conduct Meetings				JSA road conditions meeting executed with crew members about potential risk and hazards
08/12/2022	15:30	Job Complete				Job complete to specs all equipment and crew members off location
08/12/2022	16:51	Rig Equipment				Started rigging in all NES equipment necessary for cement job

Cement Heights and Tops			Spacer					
Slurry Type	Cement Height	Cement Top		PPG		YLD	18	H20
Spacer						5	lb/bbl	CPT-503P
Tail CMT		4475				2	lb/bbl	Citric Acid
Crew Members						0.75	lb/bbl	CFS-1
Field Supervisor	Roberto Kelley					70	lb/bbl	Barite
Field Supervisor	Roberto Garcia					1	gal/bbl	Plexaid 830L
	Alejandro Delagarza		Tail CMT					
	Ilian Sabori		14.8	PPG	1.33	YLD	6.31	H20
Bulk Hand	Jose MUNOZ					435	Sacks	Class C Cement
Casing Information						0.3	%	D-3
	Previous Casing	Hole & Casing Info				0.3	%	CPT-25
Hole Size 1		12.25						
MD:		8100						

TVD:		8100	
Casing Size	13.375	9.625	
Casing Grade		J-55	
Casing Length	1600	7548	
Casing Weight	54.50	40.00	
Casing ID		8.835	
DV Tool			
Shoe Joint		45	
Burst Pressure	7800		
Cement Returns	0		
Mud Info		Water Info	
Type	WBM	PH	7
Weight	9	Chlrd	400
		Temp	69



Sante Fe Main Office  
Phone: (505) 476-3441

General Information  
Phone: (505) 629-6116

Online Phone Directory  
<https://www.emnrd.nm.gov/ocd/contact-us>

State of New Mexico  
Energy, Minerals and Natural Resources  
Oil Conservation Division  
1220 S. St Francis Dr.  
Santa Fe, NM 87505

CONDITIONS

Action 280271

CONDITIONS

Operator: CAZA OPERATING, LLC 200 N Loraine St Midland, TX 79701	OGRID: 249099
	Action Number: 280271
	Action Type: [C-103] Sub. Drilling (C-103N)

CONDITIONS

Created By	Condition	Condition Date
keith.dziokonski	• For future reference, a CBL is required to be submitted for each string that does not circulate cement to surface.	12/13/2024