

Office  
 District I – (575) 393-6161  
 1625 N. French Dr., Hobbs, NM 88240  
 District II – (575) 748-1283  
 811 S. First St., Artesia, NM 88210  
 District III – (505) 334-6178  
 1000 Rio Brazos Rd., Aztec, NM 87410  
 District IV – (505) 476-3460  
 1220 S. St. Francis Dr., Santa Fe, NM  
 87505

State of New Mexico  
 Energy, Minerals and Natural Resources

Form C-103  
 Revised July 18, 2013

OIL CONSERVATION DIVISION  
 1220 South St. Francis Dr.  
 Santa Fe, NM 87505

WELL API NO. 30-045-13117
5. Indicate Type of Lease STATE <input type="checkbox"/> FEE <input checked="" type="checkbox"/>
6. State Oil & Gas Lease No. FEE
7. Lease Name or Unit Agreement Name MORRIS A
8. Well Number 9
9. OGRID Number 372171
10. Pool name or Wildcat Aztec Pictured Cliffs

SUNDRY NOTICES AND REPORTS ON WELLS (DO NOT USE THIS FORM FOR PROPOSALS TO DRILL OR TO DEEPEN OR PLUG BACK TO A DIFFERENT RESERVOIR. USE "APPLICATION FOR PERMIT" (FORM C-101) FOR SUCH PROPOSALS.)	
1. Type of Well: Oil Well <input type="checkbox"/> Gas Well <input checked="" type="checkbox"/> Other	
2. Name of Operator HILCORP ENERGY COMPANY	
3. Address of Operator 382 Road 3100, Aztec, NM 87410	
4. Well Location Unit Letter <u>I</u> : <u>1750</u> feet from the <u>South</u> line and <u>1090</u> feet from the <u>East</u> line Section <u>14</u> Township <u>30N</u> Range <u>11W</u> NMPM County <u>San Juan</u>	
11. Elevation (Show whether DR, RKB, RT, GR, etc.) 6027'	

12. Check Appropriate Box to Indicate Nature of Notice, Report or Other Data

NOTICE OF INTENTION TO:		SUBSEQUENT REPORT OF:	
PERFORM REMEDIAL WORK <input type="checkbox"/>	PLUG AND ABANDON <input type="checkbox"/>	REMEDIAL WORK <input type="checkbox"/>	ALTERING CASING <input type="checkbox"/>
TEMPORARILY ABANDON <input type="checkbox"/>	CHANGE PLANS <input type="checkbox"/>	COMMENCE DRILLING OPNS. <input type="checkbox"/>	P AND A <input checked="" type="checkbox"/>
PULL OR ALTER CASING <input type="checkbox"/>	MULTIPLE COMPL <input type="checkbox"/>	CASING/CEMENT JOB <input type="checkbox"/>	
DOWNHOLE COMMINGLE <input type="checkbox"/>			
CLOSED-LOOP SYSTEM <input type="checkbox"/>			
OTHER: <input type="checkbox"/>		OTHER: <input type="checkbox"/>	

13. Describe proposed or completed operations. (Clearly state all pertinent details, and give pertinent dates, including estimated date of starting any proposed work). SEE RULE 19.15.7.14 NMAC. For Multiple Completions: Attach wellbore diagram of proposed completion or recompletion.

Hilcorp Energy Company has partially P&A'd the subject well on 1/29/2025 per the attached report. The P&A marker is not being set at this time due to Hilcorp re-working the pad in preparation for a new drill on the same location. Well will be officially P&A'd once new drill has been completed and P&A marker has been set. A sundry will be submitted at that time.

Spud Date:

Rig Release Date:

I hereby certify that the information above is true and complete to the best of my knowledge and belief.

SIGNATURE Priscilla Shorty TITLE Operations/Regulatory Technician – Sr. DATE 2/3/2025

Type or print name Priscilla Shorty E-mail address: pshorty@hilcorp.com PHONE: (505)324-5188

**For State Use Only**

APPROVED BY: \_\_\_\_\_ TITLE \_\_\_\_\_ DATE \_\_\_\_\_

Conditions of Approval (if any):

**MORRIS A 9****30.045.13117****PLUG AND ABANDONMENT**

**1/27/2025** – MIRU. CK PRESSURES. SITP – N/A; SICP – 10 PSI; SIBHP – 0 PSI. BDW 1 MIN. R/U WRLN. RIH W/ GR TO 2500'. POH. RIH AND SET 2-7/8" CIBP AT 2482'. POH. R/D WRLN. N/D WH. N/U BOP. R/U FLOOR. FT AND PT BOP (GOOD). TALLY AND P/U 1-1/4" WORKSTRING. LOAD AND ATTEMPT TO PT CSG TO 560 PSI (NO GOOD). TOH W/ TBG. R/U WRLN. RUN CBL FROM 0' TO 2482' (TOC 1825'). R/D WRLN. TIH W/ TBG. R/U CMT CREW. **MIX AND PUMP PLUG #1: 13 SX, 14.95 CU FT, 1.15 YIELD, 15.8 PPG, 2.6 BBL SLURRY, 1.6 BBL MIX, 3.9 BBL DISP, CLASS G CEMENT TO ISOLATE PICTURED CLIFF TOP (2490') AND FRUITLAND TOP (2152') FROM 2052' TO 2482'.** L/D TBG. TOH W/ 10 STDS. SISW. SDFN. **CLARENCE SMITH, NMOCD, WAS ON LOCATION. HEC ENGINEER EMAILED NMOCD DOCUMENTING APPROVAL TO MOVE FORWARD WITH THE P&A AFTER CBL SHOWED TOC @ 1825'. NOTING THE APPROVED NOI EST TOC @ 1810'.**

**1/28/2025** - CK PRESSURES. SITP – 0 PSI; SICP – 0 PSI; SIBHP – 0 PSI. BDW 0 MIN. BDW. TIH W/ TBG AND **TAG PLUG #1 AT 2145' (93' LOW).** **MIX AND PUMP PLUG #1B WITH 8 SX, 9.2 CU FT, 1.15 YIELD, 15.8 PPG, 1.6 BBL SLURRY, 1.0 BBL MIX, 3.6 BBL DISP, CLASS G CEMENT TO ISOLATE PICTURED CLIFF TOP (2490') AND FRUITLAND TOP (2152') FROM 1869' TO 2145'.** L/D TBG. TOH W/ TBG. WOC. P/U TAG SUB. TIH W/ TBG AND **TAG PLUG #1B AT 1915'.** L/D TBG. TOH W/ TBG. R/U WRLN. RIH AND PERF FOR PLUG #2A AT 1264'. POH. RIH AND SET CIBP AT 1234'. POH. R/D WRLN. P/U STINGER. TIH W/ TBG. STING INTO CIBP AT 1234'. **MIX AND PUMP PLUG #2A WITH 48 SX, 55.2 CU FT, 1.15 YIELD, 15.8 PPG, 9.8 BBL SLURRY, 5.7 BBL MIX, 2.4 BBL DISP, CLASS G CEMENT TO ISOLATE KIRTLAND TOP (1214') AND OJO TOP (1099') FROM 1234' TO 1264' INSIDE 2-7/8" CASING AND 949' TO 1264' OUTSIDE 2-7/8" CASING.** L/D TBG. TOH W/ TBG. L/D STINGER. R/U WRLN. RIH AND SET CIBP AT 1224'. POH. R/D WRLN. P/U TAG SUB. TIH W/ TBG TO 1224'. **MIX AND PUMP PLUG #2B WITH 10 SX, 11.5 CU FT, 1.15 YIELD, 15.8 PPG, 2.0 BBL SLURRY, 1.2 BBL MIX, 1.7 BBL DISP, CLASS G CEMENT TO ISOLATE KIRTLAND TOP (1214') AND OJO TOP (1099') FROM 879' TO 1224'.** L/D TBG. TOH W/ TBG. SISW. DEBRIEFED CREW. SDFN. **CLARENCE SMITH W/ NMOCD ON LOCATION.**

**1/29/2025** - CK PRESSURES. SITP – 0 PSI; SICP – 0 PSI; SIBHP – 0 PSI. BDW 0 MIN. BDW. P/U TAG SUB. TIH AND **TAG TOC AT 930'.** L/D TBG. R/D FLOOR. N/D BOP. R/U WRLN. RIH AND PERF AT 173'. POH. R/D WRLN. EST CIRC OUT BH. **MIX AND PUMP PLUG #3 WITH 87 SX, 100.05 CU FT, 1.15 YIELD, 15.8 PPG, 17.8 BBL SLURRY, 10.4 BBL MIX, CLASS G CEMENT TO ISOLATE SURFACE SHOE (123') FROM 0' TO 173'. CIRC CMT TO SURFACE. CLARENCE SMITH W/ NMOCD ON LOCATION. RECEIVED APPROVAL FROM MONICA KUEHLING W/ NMOCD TO CUT OFF WELLHEAD AND INSTALL MARKER AFTER NEW DRILL ON PAD HAS BEEN COMPLETED. RD RIG.**

**THE P&A MARKER IS NOT BEING SET AT THIS TIME DUE TO HILCORP RE-WORKING THE PAD IN PREPARATION FOR A NEW DRILL ON THE SAME LOCATION. HILCORP WILL BE REMOVING APPROXIMATELY 4' OF TOPSOIL FROM LOCATION. WELL WILL BE OFFICIALLY P&A'D ONCE NEW DRILL HAS BEEN COMPLETED AND P&A MARKER HAS BEEN SET. A SUNDRY WILL BE SUBMITTED AT THAT TIME.**

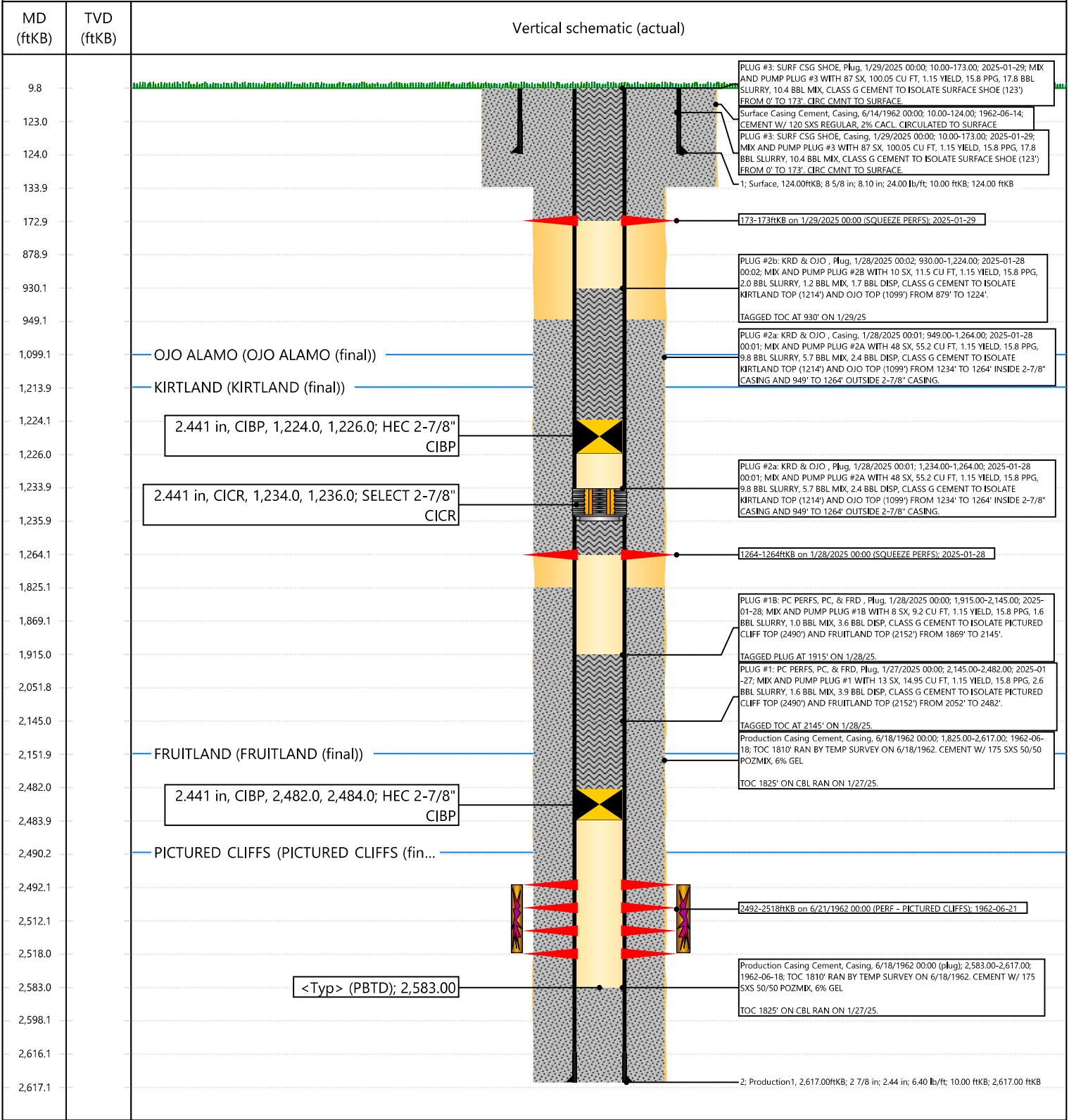


Current Schematic - Version 3

Well Name: MORRIS A #9

API / UWI 3004513117	Surface Legal Location 014-030N-011W-I	Field Name AZTEC PICTURED CLIFFS (GAS)	Route 0700	State/Province NEW MEXICO	Well Configuration Type
Ground Elevation (ft) 6,027.00	Original KB/RT Elevation (ft) 6,037.00	Tubing Hanger Elevation (ft)	RKB to GL (ft) 10.00	KB-Casing Flange Distance (ft)	KB-Tubing Hanger Distance (ft)
Tubing Strings					
Run Date	Set Depth (ftKB)	String Max Nominal OD (in)	String Min Nominal ID (in)	Weight/Length (lb/ft)	Original Spud Date

Original Hole





Point 1. Title: 29Jan25 08:41



Ad-hoc

△Aztec NM 87410, United States

🕒 29-Jan-25 08:42:23

📍 36.83336, -107.97910

UTM:13n 234320 4080529

MGRS:13SBA3431980529 (±1.79mi)

Altitude: 0 (±-3ft)

Heading: NE16 (±13°T)



**Priscilla Shorty**

---

**From:** Kuehling, Monica, EMNRD <monica.kuehling@emnrd.nm.gov>  
**Sent:** Tuesday, January 28, 2025 3:27 PM  
**To:** Joe Zimmerman  
**Cc:** John LaMond; Lee Murphy; Clay Padgett; Farmington Regulatory Techs  
**Subject:** RE: [EXTERNAL] FW: MORRIS A 9 (30.045.13117)\_NOI P&A\_OCD Approved

**CAUTION:** External sender. DO NOT open links or attachments from UNKNOWN senders.

Ok – thank you — subsequent will be approved for record only – describe reason why marker is not being set take a gps reading (include in subsequent) in case wellhead is hit and lost or someone decides to cut the wellhead off and bury it because it is in the way - plugging date is when marker is set– once able to set marker will need to submit a sundry stating so and then 103Q will come into play –

Thank you

Monica Kuehling  
Compliance Officer Supervisor  
Deputy Oil and Gas Inspector  
New Mexico Oil Conservation Division  
North District  
Cell Phone: 505-320-0243  
Email - monica.kuehling@emnrd.nm.gov

---

**From:** Joe Zimmerman <Joseph.Zimmerman@hilcorp.com>  
**Sent:** Tuesday, January 28, 2025 3:03 PM  
**To:** Kuehling, Monica, EMNRD <monica.kuehling@emnrd.nm.gov>  
**Cc:** John LaMond <jlamond@hilcorp.com>; Lee Murphy <lmurphy@hilcorp.com>; Clay Padgett <cpadgett@hilcorp.com>; Farmington Regulatory Techs <FarmingtonRegulatoryTechs@hilcorp.com>  
**Subject:** Re: [EXTERNAL] FW: MORRIS A 9 (30.045.13117)\_NOI P&A\_OCD Approved

Yes, I apologize, Monica, you're correct. So step 15 won't happen at this time.

Get [Outlook for iOS](#)

---

**From:** Kuehling, Monica, EMNRD <[monica.kuehling@emnrd.nm.gov](mailto:monica.kuehling@emnrd.nm.gov)>  
**Sent:** Tuesday, January 28, 2025 9:33:54 AM  
**To:** Joe Zimmerman <[Joseph.Zimmerman@hilcorp.com](mailto:Joseph.Zimmerman@hilcorp.com)>  
**Cc:** John LaMond <[jlamond@hilcorp.com](mailto:jlamond@hilcorp.com)>; Lee Murphy <[lmurphy@hilcorp.com](mailto:lmurphy@hilcorp.com)>; Clay Padgett <[cpadgett@hilcorp.com](mailto:cpadgett@hilcorp.com)>; Farmington Regulatory Techs <[FarmingtonRegulatoryTechs@hilcorp.com](mailto:FarmingtonRegulatoryTechs@hilcorp.com)>  
**Subject:** RE: [EXTERNAL] FW: MORRIS A 9 (30.045.13117)\_NOI P&A\_OCD Approved

**CAUTION:** External sender. DO NOT open links or attachments from UNKNOWN senders.



I thought they were leaving the wellhead in place while they work on the pad? Hilcorp is not planning on that now?

Monica

---

**From:** Joe Zimmerman <[Joseph.Zimmerman@hilcorp.com](mailto:Joseph.Zimmerman@hilcorp.com)>  
**Sent:** Tuesday, January 28, 2025 8:32 AM  
**To:** Kuehling, Monica, EMNRD <[monica.kuehling@emnrd.nm.gov](mailto:monica.kuehling@emnrd.nm.gov)>  
**Cc:** John LaMond <[jlamond@hilcorp.com](mailto:jlamond@hilcorp.com)>; Lee Murphy <[lmurphy@hilcorp.com](mailto:lmurphy@hilcorp.com)>; Clay Padgett <[cpadgett@hilcorp.com](mailto:cpadgett@hilcorp.com)>; Farmington Regulatory Techs <[FarmingtonRegulatoryTechs@hilcorp.com](mailto:FarmingtonRegulatoryTechs@hilcorp.com)>  
**Subject:** Re: [EXTERNAL] FW: MORRIS A 9 (30.045.13117)\_NOI P&A\_OCD Approved

Yes, ma'am. We plan on step 15.

Get [Outlook for iOS](#)

---

**From:** Kuehling, Monica, EMNRD <[monica.kuehling@emnrd.nm.gov](mailto:monica.kuehling@emnrd.nm.gov)>  
**Sent:** Tuesday, January 28, 2025 8:38:43 AM  
**To:** Joe Zimmerman <[Joseph.Zimmerman@hilcorp.com](mailto:Joseph.Zimmerman@hilcorp.com)>  
**Cc:** John LaMond <[jlamond@hilcorp.com](mailto:jlamond@hilcorp.com)>; Lee Murphy <[lmurphy@hilcorp.com](mailto:lmurphy@hilcorp.com)>; Clay Padgett <[cpadgett@hilcorp.com](mailto:cpadgett@hilcorp.com)>; Farmington Regulatory Techs <[FarmingtonRegulatoryTechs@hilcorp.com](mailto:FarmingtonRegulatoryTechs@hilcorp.com)>  
**Subject:** RE: [EXTERNAL] FW: MORRIS A 9 (30.045.13117)\_NOI P&A\_OCD Approved

**CAUTION:** External sender. DO NOT open links or attachments from UNKNOWN senders.

NMOCD approves below – - However, is item 15 still in your plan.

Thank you

Monica Kuehling  
Compliance Officer Supervisor  
Deputy Oil and Gas Inspector  
New Mexico Oil Conservation Division  
North District  
Cell Phone: 505-320-0243  
Email - [monica.kuehling@emnrd.nm.gov](mailto:monica.kuehling@emnrd.nm.gov)

---

**From:** Joe Zimmerman <[Joseph.Zimmerman@hilcorp.com](mailto:Joseph.Zimmerman@hilcorp.com)>  
**Sent:** Monday, January 27, 2025 6:16 PM  
**To:** Kuehling, Monica, EMNRD <[monica.kuehling@emnrd.nm.gov](mailto:monica.kuehling@emnrd.nm.gov)>  
**Cc:** John LaMond <[jlamond@hilcorp.com](mailto:jlamond@hilcorp.com)>; Lee Murphy <[lmurphy@hilcorp.com](mailto:lmurphy@hilcorp.com)>; Clay Padgett <[cpadgett@hilcorp.com](mailto:cpadgett@hilcorp.com)>; Farmington Regulatory Techs <[FarmingtonRegulatoryTechs@hilcorp.com](mailto:FarmingtonRegulatoryTechs@hilcorp.com)>; Joe Zimmerman <[Joseph.Zimmerman@hilcorp.com](mailto:Joseph.Zimmerman@hilcorp.com)>  
**Subject:** [EXTERNAL] FW: MORRIS A 9 (30.045.13117)\_NOI P&A\_OCD Approved

CAUTION: This email originated outside of our organization. Exercise caution prior to clicking on links or opening attachments.

Good evening, Monica,

As discussed, Hilcorp will continue forward with the approved NOI as the CBL shows top of cement at 1,825', and the approved NOI has estimated TOC at 1,810'.

Let me know if you have any questions.

Thanks,

- Joe Z.

---

**From:** Priscilla Shorty <[pshorty@hilcorp.com](mailto:pshorty@hilcorp.com)>

**Sent:** Thursday, January 16, 2025 6:06 AM

**To:** Joe Zimmerman <[Joseph.Zimmerman@hilcorp.com](mailto:Joseph.Zimmerman@hilcorp.com)>; John LaMond <[jlamond@hilcorp.com](mailto:jlamond@hilcorp.com)>; Clay Padgett <[cpadgett@hilcorp.com](mailto:cpadgett@hilcorp.com)>; Lee Murphy <[lmurphy@hilcorp.com](mailto:lmurphy@hilcorp.com)>; Austin Harrison <[aharrison@hilcorp.com](mailto:aharrison@hilcorp.com)>; Carson Rice <[carice@hilcorp.com](mailto:carice@hilcorp.com)>; Chad Perkins <[cperkins@hilcorp.com](mailto:cperkins@hilcorp.com)>; Dale Crawford <[dcrawford@hilcorp.com](mailto:dcrawford@hilcorp.com)>; Dani Kuzma <[dkuzma@hilcorp.com](mailto:dkuzma@hilcorp.com)>; Kelly Davidson <[mdavidson@hilcorp.com](mailto:mdavidson@hilcorp.com)>; Trey Misuraca <[Trey.Misuraca@hilcorp.com](mailto:Trey.Misuraca@hilcorp.com)>; Cameron Skelton <[Cameron.Skelton@hilcorp.com](mailto:Cameron.Skelton@hilcorp.com)>; Farmington Regulatory Techs <[FarmingtonRegulatoryTechs@hilcorp.com](mailto:FarmingtonRegulatoryTechs@hilcorp.com)>

**Subject:** MORRIS A 9 (30.045.13117)\_NOI P&A\_OCD Approved

Team ~

NMOCD has approved the NOI P&A for the Morris A 9 (30.045.13117). See the COAs below.

Thanks,

*Priscilla Shorty*

Operations Regulatory Technician

**Hilcorp Energy Company**

505-324-5188

[pshorty@hilcorp.com](mailto:pshorty@hilcorp.com)

---

**From:** [OCDOnline@state.nm.us](mailto:OCDOnline@state.nm.us) <[OCDOnline@state.nm.us](mailto:OCDOnline@state.nm.us)>

**Sent:** Wednesday, January 15, 2025 3:41 PM

**To:** Priscilla Shorty <[pshorty@hilcorp.com](mailto:pshorty@hilcorp.com)>

**Subject:** [EXTERNAL] The Oil Conservation Division (OCD) has approved the application, Application ID: 421251

**CAUTION:** External sender. DO NOT open links or attachments from UNKNOWN senders.

To whom it may concern (c/o Priscilla Shorty for HILCORP ENERGY COMPANY),

The OCD has approved the submitted *NOI - Plug & Abandon* (C-103F), for API number (30-#) 30-045-13117,  
with the following conditions:

- **Notify NMOCD 24 hours prior to moving on - Monitor string pressures daily report on subsequent - Submit all logs prior to subsequent**

The signed C-103F can be found in the OCD Online: Imaging under the API number (30-#).

If you have any questions regarding this application, please contact me.

Thank you,

Patricia Martinez

575-602-4387

[patricia.martinez@emnrd.nm.gov](mailto:patricia.martinez@emnrd.nm.gov)

**New Mexico Energy, Minerals and Natural Resources Department**

1220 South St. Francis Drive

Santa Fe, NM 87505



Sante Fe Main Office  
Phone: (505) 476-3441

General Information  
Phone: (505) 629-6116

Online Phone Directory  
<https://www.emnrd.nm.gov/ocd/contact-us>

State of New Mexico  
Energy, Minerals and Natural Resources  
Oil Conservation Division  
1220 S. St Francis Dr.  
Santa Fe, NM 87505

CONDITIONS

Action 427378

CONDITIONS

Operator: HILCORP ENERGY COMPANY 1111 Travis Street Houston, TX 77002	OGRID: 372171
	Action Number: 427378
	Action Type: [C-103] Sub. Plugging (C-103P)

CONDITIONS

Created By	Condition	Condition Date
mkuehling	approved for record only - plug date will be when marker is set.	2/3/2025
mkuehling	Notify NMOCD 24 hours prior to moving on to cut off wellhead - required to be witnessed by an inspector from this office.	2/3/2025