

District I

1625 N. French Dr., Hobbs, NM 88240

District II

811 S. First St., Artesia, NM 88210

District III

1000 Rio Brazos Rd., Aztec, NM 87410

District IV

1220 S. St. Francis Dr., Santa Fe, NM 87505

**State of New Mexico
Energy, Minerals & Natural Resources**

Form C-104
Revised August 1, 2011

**Oil Conservation Division
1220 South St. Francis Dr.
Santa Fe, NM 87505**

Submit one copy to appropriate District Office

AMENDED REPORT

I. REQUEST FOR ALLOWABLE AND AUTHORIZATION TO TRANSPORT

¹ Operator name and Address Kaiser-Francis Oil Company P.O. Box 21468, Tulsa, OK 74121-1468		² OGRID Number 12361
		³ Reason for Filing Code; Effective Date New Well; 4/28/22
⁴ API Number 30-025-48257	⁵ Pool Name Bell Lake; Bone Spring, South	⁶ Pool Code 98264
⁷ Property Code 316707	⁸ Property Name Bell Lake Unit South	⁹ Well Number 216H

II. ¹⁰ Surface Location

Ul or lot no.	Section	Township	Range	Lot Idn	Feet from the	North/South Line	Feet from the	East/West line	County
G	5	24S	34E		2,240	North	1,386	East	Lea

¹¹ Bottom Hole Location

Ul or lot no.	Section	Township	Range	Lot Idn	Feet from the	North/South line	Feet from the	East/West line	County
N	8	24S	34E		94	South	2,436	West	Lea

¹² Lse Code	¹³ Producing Method Code	¹⁴ Gas Connection Date	¹⁵ C-129 Permit Number	¹⁶ C-129 Effective Date	¹⁷ C-129 Expiration Date
F	F	1/25/2022			

III. Oil and Gas Transporters

¹⁸ Transporter OGRID	¹⁹ Transporter Name and Address	²⁰ O/G/W
	Markwest Tornado GP, LLC 1515 Araphoe St., Suite 1600 Denver, CO 80202	G
	Plains Pipeline LP 333 Clay St., #1600 Houston, TX 77002	O

IV. Well Completion Data

²¹ Spud Date	²² Ready Date	²³ TD	²⁴ PBTD	²⁵ Perforations	²⁶ DHC, MC
4/30/2021	11/26/2021	18,741' MD/ 10,899' TVD	18,563' MD/ 10,888' TVD	10,998'-18,530'	
²⁷ Hole Size	²⁸ Casing & Tubing Size	²⁹ Depth Set	³⁰ Sacks Cement		
17 1/2"	13 3/8"	1,192'	1,425		
12 1/4"	9 5/8"	5,091'	1,340		
8 1/2"	5 1/2"	18,711'	2,430		

V. Well Test Data

³¹ Date New Oil	³² Gas Delivery Date	³³ Test Date	³⁴ Test Length	³⁵ Tbg. Pressure	³⁶ Csg. Pressure
2/3/22	2/1/22	2/1/22	24 hrs.		2,550
³⁷ Choke Size	³⁸ Oil	³⁹ Water	⁴⁰ Gas	⁴¹ Test Method	
20/64"	87	699	133		

⁴² I hereby certify that the rules of the Oil Conservation Division have been complied with and that the information given above is true and complete to the best of my knowledge and belief. Signature: <i>Christina Opfer</i> Printed name: Christina Opfer Title: Regulatory Manager E-mail Address: ChristinaO@kfoc.net Date: 4/28/2022 Phone: 918-491-4468	OIL CONSERVATION DIVISION	
	Approved by: <i>PATRICIA MARTINEZ</i>	
	Title: <i>PETROLEUM SPECIALIST</i>	
	Approval Date: <i>2/7/2025</i>	

District I
1625 N. French Dr., Hobbs, NM 88240
Phone: (575) 393-6161 Fax: (575) 393-0720
District II
811 S. First St., Artesia, NM 88210
Phone: (575) 748-1283 Fax: (575) 748-9720
District III
1000 Rio Brazos Road, Aztec, NM 87410
Phone: (505) 334-6178 Fax: (505) 334-6170
District IV
1220 S. St. Francis Dr., Santa Fe, NM 87505
Phone: (505) 476-3460 Fax: (505) 476-3462

State of New Mexico
Energy, Minerals & Natural Resources Department
OIL CONSERVATION DIVISION
1220 South St. Francis Dr.
Santa Fe, NM 87505

Form C-102
Revised August 1, 2011
Submit one copy to appropriate
District Office

AMENDED REPORT

WELL LOCATION AND ACREAGE DEDICATION PLAT

¹ API Number 30-025-48257		² Pool Code 98264		³ Pool Name Bell Lake; Bone Spring, South	
⁴ Property Code 316707		⁵ Property Name BELL LAKE UNIT SOUTH			⁶ Well Number 216H
⁷ OGRID No. 12361		⁸ Operator Name KAISER-FRANCIS OIL CO.			⁹ Elevation 3583.3

¹⁰ Surface Location

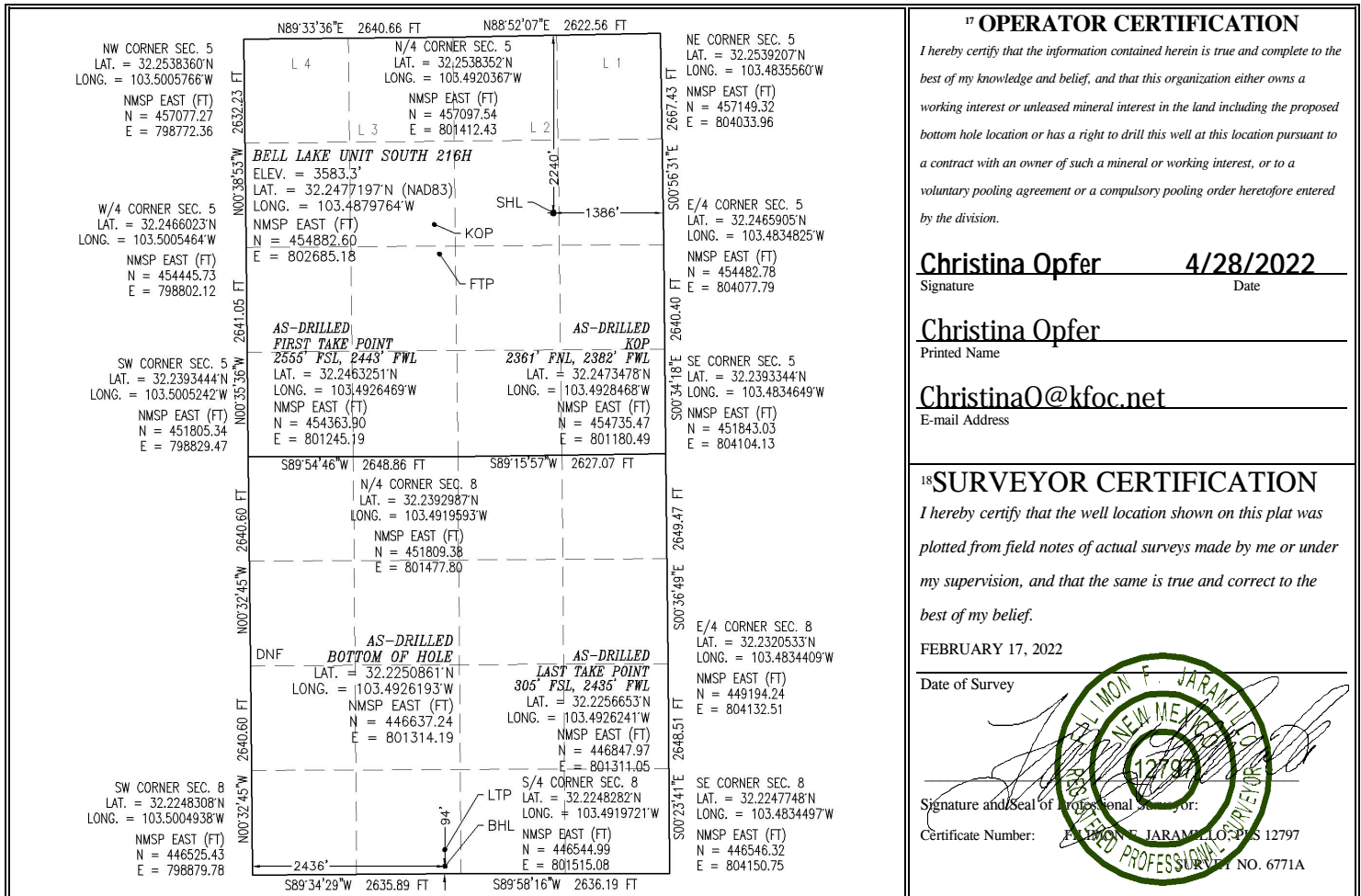
UL or lot no.	Section	Township	Range	Lot Idn	Feet from the	North/South line	Feet from the	East/West line	County
G	5	24 S	34 E		2240	NORTH	1386	EAST	LEA

¹¹ Bottom Hole Location If Different From Surface

UL or lot no.	Section	Township	Range	Lot Idn	Feet from the	North/South line	Feet from the	East/West line	County
N	8	24 S	34 E		94	SOUTH	2436	WEST	LEA

¹² Dedicated Acres 480	¹³ Joint or Infill	¹⁴ Consolidation Code	¹⁵ Order No. R-14600
--------------------------------------	-------------------------------	----------------------------------	------------------------------------

No allowable will be assigned to this completion until all interests have been consolidated or a non-standard unit has been approved by the division.



Intent As Drilled

API # 30-025-48257		
Operator Name: KAISER-FRANCIS OIL CO.	Property Name: BELL LAKE UNIT SOUTH	Well Number 216H

Kick Off Point (KOP)

UL	Section	Township	Range	Lot	Feet	From N/S	Feet	From E/W	County
F	5	24S	34E		2361	NORTH	2382	WEST	LEA
Latitude 32.2473478					Longitude 103.4928468				NAD 83

First Take Point (FTP)

UL	Section	Township	Range	Lot	Feet	From N/S	Feet	From E/W	County
K	5	24S	34E		2555	SOUTH	2443	WEST	LEA
Latitude 32.2463251					Longitude 103.4926469				NAD 83

Last Take Point (LTP)

UL	Section	Township	Range	Lot	Feet	From N/S	Feet	From E/W	County
N	8	24S	34E		305	SOUTH	2435	WEST	LEA
Latitude 32.2256653					Longitude 103.4926241				NAD 83

Is this well the defining well for the Horizontal Spacing Unit?

Is this well an infill well?

If infill is yes please provide API if available, Operator Name and well number for Defining well for Horizontal Spacing Unit.

API #		
Operator Name:	Property Name:	Well Number

KZ 06/29/2018

KAISER FRANCIS OIL CO.
 BELL LAKE UNIT S. 216H - HORIZONTAL

LEA COUNTY, N.M. 27
 SEC 5-T24S-R34E

Your Ref:

Measured Depth (ft)	Incl.	Azim.	Vertical Depth (ft)	Northings (ft)	Eastings (ft)	LATDEC (ft)	LONGDEC (dega/100ft)	Vertical Section	Dogleg Rate
0.00	0.00	0.00	0.00	0.00	0.00	32.25	-103.49	0.00	0.00
142.00	1.14	350.26	141.99	1.39	-0.24	32.25	-103.49	-1.39	0.80
229.00	1.19	2.56	228.97	3.15	-0.35	32.25	-103.49	-3.15	0.29
417.00	0.70	329.08	416.95	6.08	-0.85	32.25	-103.49	-6.08	0.38
508.00	0.53	343.05	507.94	6.96	-1.26	32.25	-103.49	-6.96	0.25
691.00	0.88	9.60	690.93	9.16	-1.27	32.25	-103.49	-9.16	0.26
783.00	0.57	340.59	782.92	10.29	-1.30	32.25	-103.49	-10.29	0.51
875.00	0.40	329.52	874.92	10.99	-1.62	32.25	-103.49	-10.99	0.21
967.00	0.40	26.29	966.92	11.56	-1.64	32.25	-103.49	-11.56	0.41
1059.00	0.48	23.04	1058.91	12.20	-1.35	32.25	-103.49	-12.20	0.09
1150.00	0.40	339.36	1149.91	12.85	-1.31	32.25	-103.49	-12.85	0.37
1249.00	0.26	69.89	1248.91	13.25	-1.22	32.25	-103.49	-13.25	0.48
1344.00	0.48	12.58	1343.91	13.71	-0.93	32.25	-103.49	-13.71	0.43
1438.00	0.70	349.91	1437.90	14.66	-0.94	32.25	-103.49	-14.66	0.34
1533.00	0.88	348.24	1532.89	15.95	-1.20	32.25	-103.49	-15.95	0.19
1628.00	1.98	207.26	1627.88	15.20	-2.10	32.25	-103.49	-15.20	2.86
1722.00	4.62	200.32	1721.71	10.21	-4.15	32.25	-103.49	-10.21	2.84
1817.00	7.34	205.94	1816.19	1.16	-8.14	32.25	-103.49	-1.16	2.93
1912.00	10.20	209.20	1910.07	-11.64	-14.90	32.25	-103.49	11.64	3.05
2007.00	9.85	209.11	2003.62	-26.08	-22.95	32.25	-103.49	26.08	0.37
2102.00	10.86	220.80	2097.08	-39.96	-32.76	32.25	-103.49	39.96	2.45
2197.00	12.18	234.16	2190.18	-52.60	-46.73	32.25	-103.49	52.60	3.12
2292.00	13.85	244.26	2282.75	-63.41	-65.10	32.25	-103.49	63.41	2.96
2387.00	15.74	251.65	2374.60	-72.41	-87.58	32.25	-103.49	72.41	2.81
2482.00	16.35	263.25	2465.93	-78.04	-113.09	32.25	-103.49	78.04	3.43
2577.00	17.14	274.32	2556.92	-78.56	-140.34	32.25	-103.49	78.56	3.45
2672.00	16.84	272.74	2647.78	-76.84	-168.04	32.25	-103.49	76.84	0.58
2767.00	16.84	272.39	2738.70	-75.61	-195.54	32.25	-103.49	75.61	0.11
2862.00	16.48	272.30	2829.71	-74.50	-222.75	32.25	-103.49	74.50	0.38
2957.00	16.13	272.56	2920.89	-73.37	-249.40	32.25	-103.49	73.37	0.38
3052.00	15.91	273.09	3012.20	-72.08	-275.58	32.25	-103.49	72.08	0.28
3147.00	15.87	273.27	3103.57	-70.63	-301.55	32.25	-103.49	70.63	0.07

3242.00	15.43	274.23	3195.05	-68.96	-327.12	32.25	-103.49	68.96	0.54
3337.00	15.16	274.15	3286.69	-67.13	-352.12	32.25	-103.49	67.13	0.29
3432.00	14.51	275.38	3378.52	-65.11	-376.36	32.25	-103.49	65.11	0.76
3527.00	14.07	275.11	3470.58	-62.97	-399.71	32.25	-103.49	62.97	0.47
3622.00	13.71	276.52	3562.80	-60.66	-422.39	32.25	-103.49	60.66	0.52
3717.00	13.41	277.13	3655.15	-58.02	-444.51	32.25	-103.49	58.02	0.35
3812.00	12.22	277.84	3747.79	-55.28	-465.40	32.25	-103.49	55.28	1.26
3907.00	11.65	278.01	3840.73	-52.57	-484.86	32.25	-103.49	52.57	0.60
4002.00	11.47	279.51	3933.81	-49.67	-503.67	32.25	-103.49	49.67	0.37
4097.00	10.99	278.80	4026.99	-46.73	-521.94	32.25	-103.49	46.73	0.53
4192.00	10.59	279.07	4120.31	-43.97	-539.51	32.25	-103.49	43.97	0.42
4287.00	9.27	278.89	4213.88	-41.41	-555.69	32.25	-103.49	41.41	1.39
4382.00	8.22	270.28	4307.78	-40.19	-570.04	32.25	-103.49	40.19	1.76
4477.00	7.87	264.21	4401.85	-40.81	-583.30	32.25	-103.49	40.81	0.97
4572.00	7.91	264.13	4495.95	-42.14	-596.28	32.25	-103.49	42.14	0.04
4667.00	9.58	258.77	4589.84	-44.35	-610.53	32.25	-103.49	44.35	1.95
4762.00	11.43	251.65	4683.25	-48.85	-627.22	32.25	-103.49	48.85	2.38
4858.00	9.54	249.54	4777.64	-54.63	-643.71	32.25	-103.49	54.63	2.01
4957.00	8.53	247.96	4875.41	-60.25	-658.20	32.25	-103.49	60.25	1.05
5048.00	9.23	249.89	4965.32	-65.29	-671.31	32.25	-103.49	65.29	0.84
5143.00	8.40	249.54	5059.20	-70.34	-684.97	32.25	-103.49	70.34	0.88
5238.00	9.05	256.30	5153.10	-74.53	-698.73	32.25	-103.49	74.53	1.28
5333.00	9.93	261.49	5246.80	-77.51	-714.09	32.25	-103.49	77.51	1.29
5428.00	12.79	266.50	5339.93	-79.37	-732.69	32.25	-103.49	79.37	3.18
5523.00	14.42	270.72	5432.27	-79.86	-755.01	32.25	-103.49	79.86	2.01
5618.00	14.24	269.05	5524.31	-79.91	-778.52	32.25	-103.49	79.91	0.47
5713.00	14.95	269.31	5616.24	-80.25	-802.46	32.25	-103.49	80.25	0.75
5808.00	16.26	273.00	5707.74	-79.70	-828.00	32.25	-103.49	79.70	1.73
5903.00	16.35	271.33	5798.92	-78.69	-854.65	32.25	-103.49	78.69	0.50
5998.00	16.22	269.66	5890.11	-78.46	-881.28	32.25	-103.49	78.46	0.51
6093.00	16.09	267.38	5981.36	-79.14	-907.70	32.25	-103.49	79.14	0.68
6188.00	15.21	266.59	6072.84	-80.48	-933.29	32.25	-103.49	80.48	0.95
6283.00	15.60	265.80	6164.43	-82.16	-958.47	32.25	-103.49	82.16	0.47
6378.00	15.16	265.18	6256.02	-84.14	-983.59	32.25	-103.49	84.14	0.49
6473.00	15.21	263.78	6347.71	-86.53	-1008.36	32.25	-103.49	86.53	0.39
6568.00	16.35	271.07	6439.13	-87.64	-1034.12	32.25	-103.49	87.64	2.40
6663.00	16.22	269.58	6530.32	-87.48	-1060.75	32.25	-103.49	87.48	0.46
6758.00	16.57	268.26	6621.46	-87.99	-1087.56	32.25	-103.49	87.99	0.54
6853.00	16.31	267.03	6712.58	-89.09	-1114.42	32.25	-103.49	89.09	0.46
6948.00	16.31	266.24	6803.75	-90.66	-1141.06	32.25	-103.49	90.66	0.23
7043.00	15.78	266.06	6895.05	-92.42	-1167.25	32.25	-103.49	92.42	0.56
7138.00	15.16	265.71	6986.61	-94.24	-1192.53	32.25	-103.49	94.24	0.66
7233.00	15.03	265.53	7078.33	-96.13	-1217.20	32.25	-103.49	96.13	0.15
7328.00	15.08	265.27	7170.07	-98.11	-1241.79	32.25	-103.49	98.11	0.09
7423.00	14.68	264.92	7261.89	-100.19	-1266.10	32.25	-103.49	100.19	0.43
7518.00	14.99	263.95	7353.72	-102.55	-1290.31	32.25	-103.49	102.55	0.42
7614.00	13.98	265.71	7446.67	-104.73	-1314.22	32.25	-103.49	104.73	1.15

7708.00	10.59	268.26	7538.50	-105.84	-1334.18	32.25	-103.49	105.84	3.65
7804.00	8.62	269.05	7633.15	-106.23	-1350.19	32.25	-103.49	106.23	2.06
7899.00	6.81	271.51	7727.29	-106.20	-1362.94	32.25	-103.49	106.20	1.94
7993.00	6.64	272.48	7820.64	-105.82	-1373.94	32.25	-103.49	105.82	0.22
8088.00	4.97	280.12	7915.15	-104.86	-1383.48	32.25	-103.49	104.86	1.93
8183.00	3.52	289.44	8009.89	-103.16	-1390.28	32.25	-103.49	103.16	1.69
8279.00	2.95	276.70	8105.74	-101.89	-1395.51	32.25	-103.49	101.89	0.95
8373.00	2.86	266.85	8199.62	-101.74	-1400.26	32.25	-103.49	101.74	0.54
8468.00	2.81	260.87	8294.50	-102.24	-1404.92	32.25	-103.49	102.24	0.32
8563.00	2.59	254.20	8389.40	-103.19	-1409.29	32.25	-103.49	103.19	0.40
8658.00	2.55	259.82	8484.30	-104.15	-1413.43	32.25	-103.49	104.15	0.27
8754.00	2.55	259.20	8580.21	-104.93	-1417.63	32.25	-103.49	104.93	0.03
8849.00	3.25	259.29	8675.08	-105.82	-1422.36	32.25	-103.49	105.82	0.74
8944.00	4.09	270.28	8769.89	-106.31	-1428.39	32.25	-103.49	106.31	1.15
9039.00	4.22	270.02	8864.64	-106.29	-1435.27	32.25	-103.49	106.29	0.14
9134.00	4.35	267.82	8959.37	-106.43	-1442.37	32.25	-103.49	106.43	0.22
9229.00	4.26	267.38	9054.11	-106.72	-1449.49	32.25	-103.49	106.72	0.10
9324.00	4.00	262.37	9148.86	-107.33	-1456.30	32.25	-103.49	107.33	0.47
9419.00	3.47	255.16	9243.66	-108.50	-1462.37	32.25	-103.49	108.50	0.74
9514.00	3.25	254.28	9338.49	-109.97	-1467.74	32.25	-103.49	109.97	0.24
9609.00	3.74	263.86	9433.32	-111.03	-1473.41	32.25	-103.49	111.03	0.80
9704.00	4.26	274.67	9528.09	-111.07	-1480.01	32.25	-103.49	111.07	0.96
9799.00	4.31	269.49	9622.82	-110.82	-1487.09	32.25	-103.49	110.82	0.41
9894.00	3.60	258.24	9717.60	-111.46	-1493.58	32.25	-103.49	111.46	1.10
9989.00	3.16	250.33	9812.43	-112.95	-1498.97	32.25	-103.49	112.95	0.67
10084.00	3.21	246.90	9907.29	-114.87	-1503.88	32.25	-103.49	114.87	0.21
10178.00	3.30	244.00	10001.13	-117.09	-1508.73	32.25	-103.49	117.09	0.20
10209.00	3.12	247.43	10032.09	-117.81	-1510.31	32.25	-103.49	117.81	0.85
10303.00	2.64	260.35	10125.97	-119.15	-1514.81	32.25	-103.49	119.15	0.86
10398.00	8.13	159.27	10220.63	-125.81	-1514.59	32.25	-103.49	125.81	9.49
10493.00	20.48	154.35	10312.51	-147.16	-1504.98	32.25	-103.49	147.16	13.05
10587.00	34.51	163.32	10395.72	-187.71	-1490.14	32.25	-103.49	187.71	15.52
10682.00	42.02	166.57	10470.27	-244.50	-1475.01	32.25	-103.49	244.50	8.18
10777.00	54.20	173.07	10533.62	-313.98	-1462.92	32.25	-103.49	313.98	13.78
10871.00	69.32	172.37	10577.97	-395.88	-1452.42	32.25	-103.49	395.88	16.10
10966.00	81.27	174.30	10602.04	-486.98	-1441.82	32.25	-103.49	486.98	12.73
11061.00	90.11	180.10	10609.18	-581.46	-1437.23	32.25	-103.49	581.46	11.12
11155.00	90.42	182.65	10608.74	-675.43	-1439.48	32.25	-103.49	675.43	2.73
11250.00	89.80	182.74	10608.56	-770.32	-1443.95	32.25	-103.49	770.32	0.66
11345.00	85.89	182.74	10612.13	-865.13	-1448.49	32.25	-103.49	865.13	4.12
11440.00	87.08	181.95	10617.96	-959.87	-1452.36	32.24	-103.49	959.87	1.50
11534.00	88.75	180.81	10621.38	-1053.77	-1454.63	32.24	-103.49	1053.77	2.15
11629.00	88.04	180.72	10624.04	-1148.73	-1455.89	32.24	-103.49	1148.73	0.75
11724.00	87.82	182.48	10627.47	-1243.62	-1458.54	32.24	-103.49	1243.62	1.87
11819.00	88.66	182.39	10630.39	-1338.49	-1462.58	32.24	-103.49	1338.49	0.89
11914.00	90.24	182.21	10631.30	-1433.41	-1466.39	32.24	-103.49	1433.41	1.67
12009.00	89.10	182.56	10631.85	-1528.32	-1470.34	32.24	-103.49	1528.32	1.26

12104.00	90.24	182.56	10632.39	-1623.23	-1474.59	32.24	-103.49	1623.23	1.20
12198.00	90.68	183.27	10631.64	-1717.10	-1479.37	32.24	-103.49	1717.10	0.89
12293.00	88.13	183.71	10632.62	-1811.91	-1485.15	32.24	-103.49	1811.91	2.72
12388.00	88.57	182.39	10635.36	-1906.73	-1490.20	32.24	-103.49	1906.73	1.46
12483.00	89.67	180.28	10636.82	-2001.69	-1492.41	32.24	-103.49	2001.69	2.50
12578.00	91.16	178.52	10636.13	-2096.68	-1491.42	32.24	-103.49	2096.68	2.43
12673.00	89.89	179.75	10635.26	-2191.66	-1489.99	32.24	-103.49	2191.66	1.86
12767.00	86.11	179.22	10638.54	-2285.58	-1489.14	32.24	-103.49	2285.58	4.06
12862.00	86.59	178.52	10644.59	-2380.37	-1487.27	32.24	-103.49	2380.37	0.89
12957.00	84.09	177.64	10652.31	-2474.99	-1484.10	32.24	-103.49	2474.99	2.79
13052.00	84.75	177.03	10661.54	-2569.44	-1479.71	32.24	-103.49	2569.44	0.94
13147.00	83.34	177.99	10671.40	-2663.83	-1475.60	32.24	-103.49	2663.83	1.79
13241.00	83.74	177.29	10681.98	-2757.16	-1471.75	32.24	-103.49	2757.16	0.85
13336.00	85.10	176.32	10691.21	-2851.56	-1466.48	32.24	-103.49	2851.56	1.76
13431.00	86.29	175.71	10698.34	-2946.06	-1459.90	32.24	-103.49	2946.06	1.41
13526.00	87.69	178.17	10703.33	-3040.78	-1454.84	32.24	-103.49	3040.78	2.98
13621.00	86.90	180.72	10707.82	-3135.66	-1453.92	32.24	-103.49	3135.66	2.81
13716.00	87.38	180.28	10712.56	-3230.54	-1454.74	32.24	-103.49	3230.54	0.69
13810.00	84.79	180.37	10718.97	-3324.31	-1455.28	32.24	-103.49	3324.31	2.76
13905.00	85.63	180.37	10726.91	-3418.98	-1455.89	32.24	-103.49	3418.98	0.88
14001.00	84.26	181.25	10735.37	-3514.59	-1457.24	32.24	-103.49	3514.59	1.69
14096.00	84.92	180.98	10744.32	-3609.15	-1459.08	32.24	-103.49	3609.15	0.75
14191.00	86.99	180.72	10751.02	-3703.90	-1460.48	32.24	-103.49	3703.90	2.20
14285.00	89.14	180.19	10754.20	-3797.83	-1461.23	32.24	-103.49	3797.83	2.36
14380.00	87.03	180.46	10757.37	-3892.77	-1461.77	32.24	-103.49	3892.77	2.24
14475.00	88.53	180.54	10761.05	-3987.70	-1462.60	32.24	-103.49	3987.70	1.58
14570.00	91.34	181.07	10761.16	-4082.68	-1463.93	32.24	-103.49	4082.68	3.01
14665.00	88.92	181.25	10760.94	-4177.65	-1465.85	32.24	-103.49	4177.65	2.55
14760.00	89.85	181.51	10761.96	-4272.62	-1468.14	32.24	-103.49	4272.62	1.02
14855.00	88.22	181.51	10763.56	-4367.57	-1470.65	32.24	-103.49	4367.57	1.72
14950.00	86.81	181.51	10767.68	-4462.44	-1473.15	32.24	-103.49	4462.44	1.48
15046.00	88.66	181.33	10771.48	-4558.33	-1475.52	32.24	-103.49	4558.33	1.94
15141.00	87.74	180.72	10774.46	-4653.27	-1477.22	32.23	-103.49	4653.27	1.16
15236.00	88.48	180.37	10777.59	-4748.21	-1478.13	32.23	-103.49	4748.21	0.86
15331.00	86.42	180.81	10781.82	-4843.11	-1479.10	32.23	-103.49	4843.11	2.22
15426.00	84.13	178.08	10789.65	-4937.77	-1478.19	32.23	-103.49	4937.77	3.74
15521.00	84.26	176.32	10799.26	-5032.16	-1473.57	32.23	-103.49	5032.16	1.85
15616.00	86.68	176.15	10806.76	-5126.65	-1467.35	32.23	-103.49	5126.65	2.55
15710.00	84.53	176.76	10813.96	-5220.19	-1461.56	32.23	-103.49	5220.19	2.38
15805.00	85.49	176.85	10822.22	-5314.68	-1456.28	32.23	-103.49	5314.68	1.01
15900.00	87.30	176.24	10828.20	-5409.32	-1450.57	32.23	-103.49	5409.32	2.01
15996.00	89.76	176.32	10830.66	-5505.08	-1444.34	32.23	-103.49	5505.08	2.56
16091.00	88.92	177.38	10831.75	-5599.93	-1439.12	32.23	-103.49	5599.93	1.42
16185.00	91.16	177.82	10831.69	-5693.84	-1435.19	32.23	-103.49	5693.84	2.43
16280.00	89.19	178.96	10831.40	-5788.79	-1432.52	32.23	-103.49	5788.79	2.40
16375.00	85.98	177.82	10835.40	-5883.66	-1429.85	32.23	-103.49	5883.66	3.59
16470.00	87.03	178.08	10841.19	-5978.42	-1426.46	32.23	-103.49	5978.42	1.14

16565.00	85.71	179.22	10847.21	-6073.20	-1424.23	32.23	-103.49	6073.20	1.83
16660.00	86.29	179.49	10853.83	-6167.96	-1423.16	32.23	-103.49	6167.96	0.67
16691.00	86.51	178.87	10855.78	-6198.89	-1422.72	32.23	-103.49	6198.89	2.12
16786.00	87.03	177.38	10861.13	-6293.69	-1419.61	32.23	-103.49	6293.69	1.66
16881.00	88.13	176.85	10865.15	-6388.48	-1414.84	32.23	-103.49	6388.48	1.29
16976.00	87.91	178.43	10868.43	-6483.34	-1410.93	32.23	-103.49	6483.34	1.68
17071.00	87.56	178.61	10872.18	-6578.24	-1408.48	32.23	-103.49	6578.24	0.41
17166.00	88.04	179.40	10875.83	-6673.15	-1406.83	32.23	-103.49	6673.15	0.97
17261.00	88.48	179.22	10878.71	-6768.10	-1405.68	32.23	-103.49	6768.10	0.50
17355.00	88.79	178.79	10880.95	-6862.06	-1404.05	32.23	-103.49	6862.06	0.56
17451.00	89.49	179.22	10882.39	-6958.03	-1402.39	32.23	-103.49	6958.03	0.86
17545.00	89.85	179.05	10882.94	-7052.02	-1400.97	32.23	-103.49	7052.02	0.42
17640.00	90.46	179.22	10882.68	-7147.01	-1399.53	32.23	-103.49	7147.01	0.67
17735.00	90.99	180.02	10881.48	-7242.00	-1398.90	32.23	-103.49	7242.00	1.01
17830.00	90.81	178.17	10879.98	-7336.97	-1397.40	32.23	-103.49	7336.97	1.96
17925.00	91.03	177.29	10878.46	-7431.88	-1393.64	32.23	-103.49	7431.88	0.95
18020.00	91.38	176.76	10876.46	-7526.73	-1388.71	32.23	-103.49	7526.73	0.67
18115.00	89.45	178.43	10875.77	-7621.64	-1384.72	32.23	-103.49	7621.64	2.69
18210.00	88.13	177.55	10877.78	-7716.56	-1381.39	32.23	-103.49	7716.56	1.67
18305.00	88.31	177.64	10880.73	-7811.43	-1377.41	32.23	-103.49	7811.43	0.21
18400.00	87.21	179.22	10884.44	-7906.31	-1374.81	32.23	-103.49	7906.31	2.03
18495.00	87.74	180.37	10888.63	-8001.22	-1374.47	32.23	-103.49	8001.22	1.33
18590.00	87.69	179.40	10892.42	-8096.14	-1374.28	32.23	-103.49	8096.14	1.02
18681.00	87.38	178.61	10896.33	-8187.04	-1372.70	32.23	-103.49	8187.04	0.93
18741.00	87.38	178.61	10899.07	-8246.96	-1371.24	32.22	-103.49	8246.96	0.00

All data are in feet unless otherwise stated. Directions and coordinates are relative to Grid North.
Vertical depths are relative to GE+23.5. Northings and Eastings are relative to Well.

The Dogleg Severity is in Degrees per 100 feet.
Vertical Section is from Slot and calculated along an Azimuth of 180.000° (Grid).

Coordinate System is NAD 1927 (NADCON CONUS) US State Plane 1927 (Exact solution), New Mexico East 3001
Central meridian is -104.333°.
Grid Convergence at Surface is 0.451°.

Based upon Minimum Curvature type calculations, at a Measured Depth of 18741.00ft.,
the Bottom Hole Displacement is 8360.19ft., in the Direction of 180.000° (Grid).

NAD 27 Northing (usft)	NAD 27 Easting (usft)	NAD 83 Northing (usft)	NAD 83 Easting (usft)
454823.56	761501.24	454882.60	802685.18
454824.95	761501.00	454883.99	802684.94
454826.71	761500.89	454885.75	802684.83
454829.64	761500.39	454888.68	802684.33
454830.52	761499.98	454889.56	802683.92
454832.72	761499.97	454891.76	802683.91
454833.85	761499.94	454892.89	802683.88
454834.55	761499.62	454893.59	802683.56
454835.12	761499.60	454894.16	802683.54
454835.76	761499.89	454894.80	802683.83
454836.41	761499.93	454895.45	802683.87
454836.81	761500.02	454895.85	802683.96
454837.27	761500.31	454896.31	802684.25
454838.22	761500.30	454897.26	802684.24
454839.51	761500.04	454898.55	802683.98
454838.76	761499.14	454897.80	802683.08
454833.77	761497.09	454892.81	802681.03
454824.72	761493.10	454883.76	802677.04
454811.92	761486.34	454870.96	802670.28
454797.48	761478.29	454856.52	802662.23
454783.60	761468.48	454842.64	802652.42
454770.96	761454.51	454830.00	802638.45
454760.15	761436.14	454819.19	802620.08
454751.15	761413.66	454810.19	802597.60
454745.52	761388.15	454804.56	802572.09
454745.00	761360.90	454804.04	802544.84
454746.72	761333.20	454805.76	802517.14
454747.95	761305.70	454806.99	802489.64
454749.06	761278.49	454808.10	802462.43
454750.19	761251.84	454809.23	802435.78
454751.48	761225.66	454810.52	802409.60
454752.93	761199.69	454811.97	802383.63

454754.60	761174.12	454813.64	802358.06
454756.43	761149.12	454815.47	802333.06
454758.45	761124.88	454817.49	802308.82
454760.59	761101.53	454819.63	802285.47
454762.90	761078.85	454821.94	802262.79
454765.54	761056.73	454824.58	802240.67
454768.28	761035.84	454827.32	802219.78
454770.99	761016.38	454830.03	802200.32
454773.89	760997.57	454832.93	802181.51
454776.83	760979.30	454835.87	802163.24
454779.59	760961.73	454838.63	802145.67
454782.15	760945.55	454841.19	802129.49
454783.37	760931.20	454842.41	802115.14
454782.75	760917.94	454841.79	802101.88
454781.42	760904.96	454840.46	802088.90
454779.21	760890.71	454838.25	802074.65
454774.71	760874.02	454833.75	802057.96
454768.93	760857.53	454827.97	802041.47
454763.31	760843.04	454822.35	802026.98
454758.27	760829.93	454817.31	802013.87
454753.22	760816.27	454812.26	802000.21
454749.03	760802.51	454808.07	801986.45
454746.05	760787.15	454805.09	801971.09
454744.19	760768.55	454803.23	801952.49
454743.70	760746.23	454802.74	801930.17
454743.65	760722.72	454802.69	801906.66
454743.31	760698.78	454802.35	801882.72
454743.86	760673.24	454802.90	801857.18
454744.87	760646.59	454803.91	801830.53
454745.10	760619.96	454804.14	801803.90
454744.42	760593.54	454803.46	801777.48
454743.08	760567.95	454802.12	801751.89
454741.40	760542.77	454800.44	801726.71
454739.42	760517.65	454798.46	801701.59
454737.03	760492.88	454796.07	801676.82
454735.92	760467.12	454794.96	801651.06
454736.08	760440.49	454795.12	801624.43
454735.57	760413.68	454794.61	801597.62
454734.47	760386.82	454793.51	801570.76
454732.90	760360.18	454791.94	801544.12
454731.14	760333.99	454790.18	801517.93
454729.32	760308.71	454788.36	801492.65
454727.43	760284.04	454786.47	801467.98
454725.45	760259.45	454784.49	801443.39
454723.37	760235.14	454782.41	801419.08
454721.01	760210.93	454780.05	801394.87
454718.83	760187.02	454777.87	801370.96

454717.72	760167.06	454776.76	801351.00
454717.33	760151.05	454776.37	801334.99
454717.36	760138.30	454776.40	801322.24
454717.74	760127.30	454776.78	801311.24
454718.70	760117.76	454777.74	801301.70
454720.40	760110.96	454779.44	801294.90
454721.67	760105.73	454780.71	801289.67
454721.82	760100.98	454780.86	801284.92
454721.32	760096.32	454780.36	801280.26
454720.37	760091.95	454779.41	801275.89
454719.41	760087.81	454778.45	801271.75
454718.63	760083.61	454777.67	801267.55
454717.74	760078.88	454776.78	801262.82
454717.25	760072.85	454776.29	801256.79
454717.27	760065.97	454776.31	801249.91
454717.13	760058.87	454776.17	801242.81
454716.84	760051.75	454775.88	801235.69
454716.23	760044.94	454775.27	801228.88
454715.06	760038.87	454774.10	801222.81
454713.59	760033.50	454772.63	801217.44
454712.53	760027.83	454771.57	801211.77
454712.49	760021.23	454771.53	801205.17
454712.74	760014.15	454771.78	801198.09
454712.10	760007.66	454771.14	801191.60
454710.61	760002.27	454769.65	801186.21
454708.69	759997.36	454767.73	801181.30
454706.47	759992.51	454765.51	801176.45
454705.75	759990.93	454764.79	801174.87
454704.41	759986.43	454763.45	801170.37
454697.75	759986.65	454756.79	801170.59
454676.40	759996.26	454735.44	801180.20
454635.85	760011.10	454694.89	801195.04
454579.06	760026.23	454638.10	801210.17
454509.58	760038.32	454568.62	801222.26
454427.68	760048.82	454486.72	801232.76
454336.58	760059.42	454395.62	801243.36
454242.10	760064.01	454301.14	801247.95
454148.13	760061.76	454207.17	801245.70
454053.24	760057.29	454112.28	801241.23
453958.43	760052.75	454017.47	801236.69
453863.69	760048.88	453922.73	801232.82
453769.79	760046.61	453828.83	801230.55
453674.83	760045.35	453733.87	801229.29
453579.94	760042.70	453638.98	801226.64
453485.07	760038.66	453544.11	801222.60
453390.15	760034.85	453449.19	801218.79
453295.24	760030.90	453354.28	801214.84

453200.33	760026.65	453259.37	801210.59
453106.46	760021.87	453165.50	801205.81
453011.65	760016.09	453070.69	801200.03
452916.83	760011.04	452975.87	801194.98
452821.87	760008.83	452880.91	801192.77
452726.88	760009.82	452785.92	801193.76
452631.90	760011.25	452690.94	801195.19
452537.98	760012.10	452597.02	801196.04
452443.19	760013.97	452502.23	801197.91
452348.57	760017.14	452407.61	801201.08
452254.12	760021.53	452313.16	801205.47
452159.73	760025.64	452218.77	801209.58
452066.40	760029.49	452125.44	801213.43
451972.00	760034.76	452031.04	801218.70
451877.50	760041.34	451936.54	801225.28
451782.78	760046.40	451841.82	801230.34
451687.90	760047.32	451746.94	801231.26
451593.02	760046.50	451652.06	801230.44
451499.25	760045.96	451558.29	801229.90
451404.58	760045.35	451463.62	801229.29
451308.97	760044.00	451368.01	801227.94
451214.41	760042.16	451273.45	801226.10
451119.66	760040.76	451178.70	801224.70
451025.73	760040.01	451084.77	801223.95
450930.79	760039.47	450989.83	801223.41
450835.86	760038.64	450894.90	801222.58
450740.88	760037.31	450799.92	801221.25
450645.91	760035.39	450704.95	801219.33
450550.94	760033.10	450609.98	801217.04
450455.99	760030.59	450515.03	801214.53
450361.12	760028.09	450420.16	801212.03
450265.23	760025.72	450324.27	801209.66
450170.29	760024.02	450229.33	801207.96
450075.35	760023.11	450134.39	801207.05
449980.45	760022.14	450039.49	801206.08
449885.79	760023.05	449944.83	801206.99
449791.40	760027.67	449850.44	801211.61
449696.91	760033.89	449755.95	801217.83
449603.37	760039.68	449662.41	801223.62
449508.88	760044.96	449567.92	801228.90
449414.24	760050.67	449473.28	801234.61
449318.48	760056.90	449377.52	801240.84
449223.63	760062.12	449282.67	801246.06
449129.72	760066.05	449188.76	801249.99
449034.77	760068.72	449093.81	801252.66
448939.90	760071.39	448998.94	801255.33
448845.14	760074.78	448904.18	801258.72

448750.36	760077.01	448809.40	801260.95
448655.60	760078.08	448714.64	801262.02
448624.67	760078.52	448683.71	801262.46
448529.87	760081.63	448588.91	801265.57
448435.08	760086.40	448494.12	801270.34
448340.22	760090.31	448399.26	801274.25
448245.32	760092.76	448304.36	801276.70
448150.41	760094.41	448209.45	801278.35
448055.46	760095.56	448114.50	801279.50
447961.50	760097.19	448020.54	801281.13
447865.53	760098.85	447924.57	801282.79
447771.54	760100.27	447830.58	801284.21
447676.55	760101.71	447735.59	801285.65
447581.56	760102.34	447640.60	801286.28
447486.59	760103.84	447545.63	801287.78
447391.68	760107.60	447450.72	801291.54
447296.83	760112.53	447355.87	801296.47
447201.92	760116.52	447260.96	801300.46
447107.00	760119.85	447166.04	801303.79
447012.13	760123.83	447071.17	801307.77
446917.25	760126.43	446976.29	801310.37
446822.34	760126.77	446881.38	801310.71
446727.42	760126.96	446786.46	801310.90
446636.52	760128.54	446695.56	801312.48
446576.60	760130.00	446635.64	801313.94

..

U.S. Department of the Interior
BUREAU OF LAND MANAGEMENT

Well Name: BELL LAKE UNIT SOUTH	Well Location: T24S / R34E / SEC 5 / SENE / 32.2479388 / -103.4874966	County or Parish/State: LEA / NM
Well Number: 216H	Type of Well: OIL WELL	Allottee or Tribe Name:
Lease Number: NMLC061374A	Unit or CA Name: BELL LAKE	Unit or CA Number: NMNM68292X
US Well Number: 3002548257	Well Status: Drilling Well	Operator: KAISER FRANCIS OIL COMPANY

Subsequent Report

Sundry ID: 2654020

Type of Submission: Subsequent Report

Type of Action: Hydraulic Fracturing

Date Sundry Submitted: 01/25/2022

Time Sundry Submitted: 09:37

Date Operation Actually Began: 11/04/2021

Actual Procedure: 10/21: Pressure test csg to 9,800#. TCP Stage 1: 18,408'-18,530' w/ 5, 3 1/8" guns. Slight break in perms with 5207#. Establish injection into perms: 5 BPM @ 5,500# for 25 bbls. SD and isolate well. ISIP 4,652#, 5 min 4,652#, 10 min 3,498#, 15 min 3,471# 11/21: Stage-frac lateral 10,998'-18,530' in 43 stages w/ 419,180 bbls fluid carrying 18,305,160# sd. Drilled out all plugs w/snubbing unit. TLTR: 425,235 bbls. SICP:

Well Name: BELL LAKE UNIT SOUTH

Well Location: T24S / R34E / SEC 5 / SENE / 32.2479388 / -103.4874966

County or Parish/State: LEA / NM

Well Number: 216H

Type of Well: OIL WELL

Allottee or Tribe Name:

Lease Number: NMLC061374A

Unit or CA Name: BELL LAKE

Unit or CA Number: NMNM68292X

US Well Number: 3002548257

Well Status: Drilling Well

Operator: KAISER FRANCIS OIL COMPANY

Operator Certification

I certify that the foregoing is true and correct. Title 18 U.S.C. Section 1001 and Title 43 U.S.C. Section 1212, make it a crime for any person knowingly and willfully to make to any department or agency of the United States any false, fictitious or fraudulent statements or representations as to any matter within its jurisdiction. Electronic submission of Sundry Notices through this system satisfies regulations requiring a submission of Form 3160-5 or a Sundry Notice.

Operator Electronic Signature: CHRISTINA OPFER

Signed on: JAN 25, 2022 09:36 AM

Name: KAISER FRANCIS OIL COMPANY

Title: Regulatory Manager

Street Address: 6733 S YALE AVENUE

City: TULSA

State: OK

Phone: (918) 491-4468

Email address: CHRISTINAO@KFOC.NET

Field Representative

Representative Name: Jeremy Parent

Street Address: 88 Shell Rd

City: Jal

State: NM

Zip: 88252

Phone: (580)504-2593

Email address: jeremyp@kfoc.net

BLM Point of Contact

BLM POC Name: Jonathon W Shepard

BLM POC Title: Petroleum Engineer

BLM POC Phone: 5752345972

BLM POC Email Address: jshepard@blm.gov

Disposition: Accepted

Disposition Date: 02/01/2022

Signature: Jonathon Shepard

Submit To Appropriate District Office Two Copies District I 1625 N. French Dr., Hobbs, NM 88240 District II 811 S. First St., Artesia, NM 88210 District III 1000 Rio Brazos Rd., Aztec, NM 87410 District IV 1220 S. St. Francis Dr., Santa Fe, NM 87505	State of New Mexico Energy, Minerals and Natural Resources Oil Conservation Division 1220 South St. Francis Dr. Santa Fe, NM 87505	Form C-105 Revised April 3, 2017
		1. WELL API NO. 30-025-48257
		2. Type of Lease <input type="checkbox"/> STATE <input type="checkbox"/> FEE <input checked="" type="checkbox"/> FED/INDIAN
		3. State Oil & Gas Lease No.

WELL COMPLETION OR RECOMPLETION REPORT AND LOG

4. Reason for filing: <input checked="" type="checkbox"/> COMPLETION REPORT (Fill in boxes #1 through #31 for State and Fee wells only) <input type="checkbox"/> C-144 CLOSURE ATTACHMENT (Fill in boxes #1 through #9, #15 Date Rig Released and #32 and/or #33; attach this and the plat to the C-144 closure report in accordance with 19.15.17.13.K NMAC)	5. Lease Name or Unit Agreement Name Bell Lake Unit South 6. Well Number: 216H
---	---

7. Type of Completion:
 NEW WELL WORKOVER DEEPENING PLUGBACK DIFFERENT RESERVOIR OTHER _____

8. Name of Operator Kaiser-Francis Oil Company	9. OGRID 12361
---	-------------------

10. Address of Operator P.O. Box 21468 Tulsa, OK 74121-1468	11. Pool name or Wildcat Bell Lake; Bone Spring, South
---	---

12. Location	Unit Ltr	Section	Township	Range	Lot	Feet from the	N/S Line	Feet from the	E/W Line	County
Surface:	G	5	24S	34E		2,240	N	1,386	E	Lea
BH:	N	8	24S	34E		94	S	2,436	W	Lea

13. Date Spudded 4/30/21	14. Date T.D. Reached 5/8/21	15. Date Rig Released 5/10/21	16. Date Completed (Ready to Produce) 11/26/21	17. Elevations (DF and RKB, RT, GR, etc.) 3,583.3 GR
-----------------------------	---------------------------------	----------------------------------	---	---

18. Total Measured Depth of Well 18,741'	19. Plug Back Measured Depth 18,563'	20. Was Directional Survey Made? YES	21. Type Electric and Other Logs Run GR
---	---	---	--

22. Producing Interval(s), of this completion - Top, Bottom, Name
 10,998'-18,530'

23. CASING RECORD (Report all strings set in well)

CASING SIZE	WEIGHT LB./FT.	DEPTH SET	HOLE SIZE	CEMENTING RECORD	AMOUNT PULLED
13 3/8"	54.5#	1,192'	17 1/2"	1,425 sx	
9 5/8"	40#	5,091'	12 1/4"	1,340 sx	
5 1/2"	20#	18,711'	8 1/2"	2,430 sx	

24. LINER RECORD				25. TUBING RECORD			
SIZE	TOP	BOTTOM	SACKS CEMENT	SCREEN	SIZE	DEPTH SET	PACKER SET
none	-	-	-	-	none	-	-

26. Perforation record (interval, size, and number) 10,998'-18,530', 0.41", 2064 holes	27. ACID, SHOT, FRACTURE, CEMENT, SQUEEZE, ETC. DEPTH INTERVAL AMOUNT AND KIND MATERIAL USED 10,998'-18,530' 419,180 bbls fluid + 18,305,160# sd
---	--

28. PRODUCTION

Date First Production 2/1/22	Production Method (Flowing, gas lift, pumping - Size and type pump) Flowing	Well Status (Prod. or Shut-in) Prod
---------------------------------	--	--

Date of Test	Hours Tested	Choke Size	Prod'n For Test Period	Oil - Bbl	Gas - MCF	Water - Bbl.	Gas - Oil Ratio
2/1/22	24	20/64"		87	133	699	44

Flow Tubing Press.	Casing Pressure	Calculated 24-Hour Rate	Oil - Bbl.	Gas - MCF	Water - Bbl.	Oil Gravity - API - (Corr.)
	2,550					

29. Disposition of Gas (Sold, used for fuel, vented, etc.) Sold	30. Test Witnessed By
--	-----------------------

31. List Attachments
 C-104 NW, C-102 As-Drilled w/HSU, C-103 Completion, Final Svy., WBD

32. If a temporary pit was used at the well, attach a plat with the location of the temporary pit.	33. Rig Release Date:
--	-----------------------

34. If an on-site burial was used at the well, report the exact location of the on-site burial:
 Latitude _____ Longitude _____ NAD83

I hereby certify that the information shown on both sides of this form is true and complete to the best of my knowledge and belief

Signature Christina Opfer Printed Name Christina Opfer Title Regulatory Manager Date 4/28/2022
 E-mail Address ChristinaO@kfoc.net

INSTRUCTIONS

This form is to be filed with the appropriate District Office of the Division not later than 20 days after the completion of any newly-drilled or deepened well and not later than 60 days after completion of closure. When submitted as a completion report, this shall be accompanied by one copy of all electrical and radio-activity logs run on the well and a summary of all special tests conducted, including drill stem tests. All depths reported shall be measured depths. In the case of directionally drilled wells, true vertical depths shall also be reported. For multiple completions, items 11, 12 and 26-31 shall be reported for each zone.

INDICATE FORMATION TOPS IN CONFORMANCE WITH GEOGRAPHICAL SECTION OF STATE

Southeastern New Mexico		Northwestern New Mexico	
T. Anhy _____	T. Canyon _____	T. Ojo Alamo _____	T. Penn A" _____
T. Salt _____	T. Strawn _____	T. Kirtland _____	T. Penn. "B" _____
B. Salt _____	T. Atoka _____	T. Fruitland _____	T. Penn. "C" _____
T. Yates _____	T. Miss _____	T. Pictured Cliffs _____	T. Penn. "D" _____
T. 7 Rivers _____	T. Devonian _____	T. Cliff House _____	T. Leadville _____
T. Queen _____	T. Silurian _____	T. Menefee _____	T. Madison _____
T. Grayburg _____	T. Montoya _____	T. Point Lookout _____	T. Elbert _____
T. San Andres _____	T. Simpson _____	T. Mancos _____	T. McCracken _____
T. Glorieta _____	T. McKee _____	T. Gallup _____	T. Ignacio Otzte _____
T. Paddock _____	T. Ellenburger _____	Base Greenhorn _____	T. Granite _____
T. Blinebry _____	T. Gr. Wash _____	T. Dakota _____	
T. Tubb _____	T. Delaware Sand _____	T. Morrison _____	
T. Drinkard _____	T. Bone Springs _____	T. Todilto _____	
T. Abo _____	T. _____	T. Entrada _____	
T. Wolfcamp _____	T. _____	T. Wingate _____	
T. Penn _____	T. _____	T. Chinle _____	
T. Cisco (Bough C) _____	T. _____	T. Permian _____	

OIL OR GAS SANDS OR
ZONES

No. 1, from.....to.....
 No. 2, from.....to.....

No. 3, from.....to.....
 No. 4, from.....to.....

IMPORTANT WATER SANDS

Include data on rate of water inflow and elevation to which water rose in hole.

No. 1, from.....to.....feet.....
 No. 2, from.....to.....feet.....
 No. 3, from.....to.....feet.....

LITHOLOGY RECORD (Attach additional sheet if necessary)

From	To	Thickness In Feet	Lithology	From	To	Thickness In Feet	Lithology
1,153			Rustler, Sand				
5,275			Delaware, Sand				
7,647			Brushy Canyon, Sand				
8,998			Avalon, Sand				
9,997			Bone Spring 1 st , Sand				
10,453			Bone Spring 2 nd , Lime				
10,675			Bone Spring 2 nd , Sand				

10998	11117	10	998	11	117	10,998'-11,117'	10,998'-11, 11,175'-11, 11,351'-11, 11,524'-11, 11,704'-11, 11,879'-11,
11175	11293	11	175	11	293	11,175'-11,293'	
11351	11470	11	351	11	470	11,351'-11,470'	
11524	11646	11	524	11	646	11,524'-11,646'	
11704	11823	11	704	11	823	11,704'-11,823'	
11879	11999	11	879	11	999	11,879'-11,999'	
12057	12176	12	057	12	176	12,057'-12,176'	
12232	12352	12	232	12	352	12,232'-12,352'	
12410	12529	12	410	12	529	12,410'-12,529'	
12587	12705	12	587	12	705	12,587'-12,705'	
12763	12884	12	763	12	884	12,763'-12,884'	
12940	13058	12	940	13	058	12,940'-13,058'	
13116	13235	13	116	13	235	13,116'-13,235'	
13293	13411	13	293	13	411	13,293'-13,411'	
13469	13588	13	469	13	588	13,469'-13,588'	
13646	13764	13	646	13	764	13,646'-13,764'	
13822	13944	13	822	13	944	13,822'-13,944'	
13999	14117	13	999	14	117	13,999'-14,117'	
14175	14294	14	175	14	294	14,175'-14,294'	
14352	14470	14	352	14	470	14,352'-14,470'	
14528	14647	14	528	14	647	14,528'-14,647'	
14705	14823	14	705	14	823	14,705'-14,823'	
14883	15000	14	883	15	000	14,883'-15,000'	
15058	15176	15	058	15	176	15,058'-15,176'	
15234	15353	15	234	15	353	15,234'-15,353'	
15411	15529	15	411	15	529	15,411'-15,529'	
15587	15706	15	587	15	706	15,587'-15,706'	
15764	15882	15	764	15	882	15,764'-15,882'	
15940	16059	15	940	16	059	15,940'-16,059'	
16119	16235	16	119	16	235	16,119'-16,235'	
16293	16412	16	293	16	412	16,293'-16,412'	
16470	16588	16	470	16	588	16,470'-16,588'	
16646	16765	16	646	16	765	16,646'-16,765'	
16823	16941	16	823	16	941	16,823'-16,941'	

16999	17118	16	999	17	118	16,999'-17,118'
17176	17294	17	176	17	294	17,176'-17,294'
17352	17474	17	352	17	474	17,352'-17,474'
17529	17647	17	529	17	647	17,529'-17,647'
17705	17824	17	705	17	824	17,705'-17,824'
17882	18000	17	882	18	000	17,882'-18,000'
18058	18177	18	058	18	177	18,058'-18,177'
18235	18353	18	235	18	353	18,235'-18,353'
18408	18530	18	408	18	530	18,408'-18,530'

12,057'-12, 12,232'-12, 12,410'-12, 12,587'-12, 12,763'-12, 12,940'-13, 13,116'-13, 13,293'-13, 13,469'-13, 13,646'-13, 13,822'-13, 13,999'-14, 14,175'-14,

14,352'-14, 14,528'-14, 14,705'-14, 14,883'-15, 15,058'-15, 15,234'-15, 15,411'-15, 15,587'-15, 15,764'-15, 15,940'-16, 16,119'-16, 16,293'-16, 16,470'-16,

16,646'-16, 16,823'-16, 16,999'-17, 17,176'-17, 17,352'-17, 17,529'-17, 17,705'-17, 17,882'-18, 18,058'-18, 18,235'-18, 18,408'-18,530'

Sante Fe Main Office
Phone: (505) 476-3441

General Information
Phone: (505) 629-6116

Online Phone Directory
<https://www.emnrd.nm.gov/ocd/contact-us>

State of New Mexico
Energy, Minerals and Natural Resources
Oil Conservation Division
1220 S. St Francis Dr.
Santa Fe, NM 87505

ACKNOWLEDGMENTS

Action 124555

ACKNOWLEDGMENTS

Operator: KAISER-FRANCIS OIL CO PO Box 21468 Tulsa, OK 741211468	OGRID: 12361
	Action Number: 124555
	Action Type: [C-104] Completion Packet (C-104C)

ACKNOWLEDGMENTS

<input checked="" type="checkbox"/>	I hereby certify that the required Water Use Report has been, or will be, submitted for this wells completion.
<input checked="" type="checkbox"/>	I hereby certify that the required FracFocus disclosure has been, or will be, submitted for this wells completion.

Sante Fe Main Office
Phone: (505) 476-3441

General Information
Phone: (505) 629-6116

Online Phone Directory
<https://www.emnrd.nm.gov/ocd/contact-us>

State of New Mexico
Energy, Minerals and Natural Resources
Oil Conservation Division
1220 S. St Francis Dr.
Santa Fe, NM 87505

CONDITIONS

Action 124555

CONDITIONS

Operator: KAISER-FRANCIS OIL CO PO Box 21468 Tulsa, OK 741211468	OGRID: 12361
	Action Number: 124555
	Action Type: [C-104] Completion Packet (C-104C)

CONDITIONS

Created By	Condition	Condition Date
plmartinez	In the future, please include complete Production Casing Pressure Test information either on Production drilling Sundry or Completion Sundry aka Hydraulic Frac. Sundry and include -Pressure Test psi, Duration of Test (30 minutes required) -which was missing, and Test results.	2/7/2025
plmartinez	File 3160-4 Completion Report within 10 days of BLM approval.	2/7/2025