

Office  
 District I – (575) 393-6161  
 1625 N. French Dr., Hobbs, NM 88240  
 District II – (575) 748-1283  
 811 S. First St., Artesia, NM 88210  
 District III – (505) 334-6178  
 1000 Rio Brazos Rd., Aztec, NM 87410  
 District IV – (505) 476-3460  
 1220 S. St. Francis Dr., Santa Fe, NM  
 87505

State of New Mexico  
 Energy, Minerals and Natural Resources

Form C-103  
 Revised July 18, 2013

OIL CONSERVATION DIVISION  
 1220 South St. Francis Dr.  
 Santa Fe, NM 87505

WELL API NO. 30-025-multiple
5. Indicate Type of Lease STATE <input type="checkbox"/> FEE <input type="checkbox"/>
6. State Oil & Gas Lease No.
7. Lease Name or Unit Agreement Name Amazing 19 Fed
8. Well Number multiple
9. OGRID Number 7377
10. Pool name or Wildcat

<b>SUNDRY NOTICES AND REPORTS ON WELLS</b> (DO NOT USE THIS FORM FOR PROPOSALS TO DRILL OR TO DEEPEN OR PLUG BACK TO A DIFFERENT RESERVOIR. USE "APPLICATION FOR PERMIT" (FORM C-101) FOR SUCH PROPOSALS.)	
1. Type of Well: Oil Well <input checked="" type="checkbox"/> Gas Well <input type="checkbox"/> Other <input type="checkbox"/>	
2. Name of Operator EOG Resources, Inc.	
3. Address of Operator P.O. Box 2267, Midland, TX 79702	
4. Well Location Unit Letter _____: _____ feet from the _____ line and _____ feet from the _____ line Section 19 Township 22S Range 32E NMPM Lea County	
11. Elevation (Show whether DR, RKB, RT, GR, etc.)	

12. Check Appropriate Box to Indicate Nature of Notice, Report or Other Data

<b>NOTICE OF INTENTION TO:</b> PERFORM REMEDIAL WORK <input type="checkbox"/> PLUG AND ABANDON <input type="checkbox"/> TEMPORARILY ABANDON <input type="checkbox"/> CHANGE PLANS <input type="checkbox"/> PULL OR ALTER CASING <input type="checkbox"/> MULTIPLE COMPL <input type="checkbox"/> DOWNHOLE COMMINGLE <input type="checkbox"/> CLOSED-LOOP SYSTEM <input type="checkbox"/> OTHER: <input type="checkbox"/>		<b>SUBSEQUENT REPORT OF:</b> REMEDIAL WORK <input type="checkbox"/> ALTERING CASING <input type="checkbox"/> COMMENCE DRILLING OPNS. <input type="checkbox"/> P AND A <input type="checkbox"/> CASING/CEMENT JOB <input type="checkbox"/> OTHER: PC-1403 <input checked="" type="checkbox"/>	
--	--	--	--

13. Describe proposed or completed operations. (Clearly state all pertinent details, and give pertinent dates, including estimated date of starting any proposed work). SEE RULE 19.15.7.14 NMAC. For Multiple Completions: Attach wellbore diagram of proposed completion or recompletion.

Pursuant to administrative Order PC-1403 EOG Resources, Inc. ("EOG") respectfully request to add the following infill wells to the Amazing 19 Fed central tank battery located in the SWNE of Section 19 in Township 22 South, Range 32 East, Lea County, NM. All production from the subject wells will be allocated using readings from individual well meters.

Amazing 19 Fed 201H	30-025-52065	Amazing 19 Fed 501H	30-025-52071
Amazing 19 Fed 204H	30-025-52067	Amazing 19 Fed 502H	30-025-52072
Amazing 19 Fed 205H	30-025-50475	Amazing 19 Fed 503H	30-025-52073
Amazing 19 Fed 206H	30-025-52133	Amazing 19 Fed 504H	30-025-52075
Amazing 19 Fed 401H	30-025-52070	Amazing 19 Fed 505H	30-025-52152
Amazing 19 Fed 402H	30-025-52074		

Spud Date:

Rig Release Date:

I hereby certify that the information above is true and complete to the best of my knowledge and belief.

SIGNATURE Lisa Youngblood TITLE Regulatory Specialist DATE 3/22/2024

Type or print name Lisa Youngblood E-mail address: lisa\_youngblood@eogresources.com PHONE: 432-247-6331

**For State Use Only**

APPROVED BY: \_\_\_\_\_ TITLE \_\_\_\_\_ DATE \_\_\_\_\_

Conditions of Approval (if any):

Form C-102  
Revised August 1, 2011  
Submit one copy to appropriate  
District Office  
☐ AMENDED REPORT

DISTRICT I  
1625 N. French Dr., Hobbs, NM 88240  
Phone: (575) 393-6161 Fax: (575) 393-0720  
DISTRICT II  
811 S. First St., Artesia, NM 88210  
Phone: (575) 748-1283 Fax: (575) 748-9720  
DISTRICT III  
1000 Rio Brazos Rd., Aztec, NM 87410  
Phone: (505) 334-6178 Fax: (505) 334-6170  
DISTRICT IV  
1220 S. St. Francis Dr., Santa Fe, NM 87505  
Phone: (505) 476-3460 Fax: (505) 476-3462

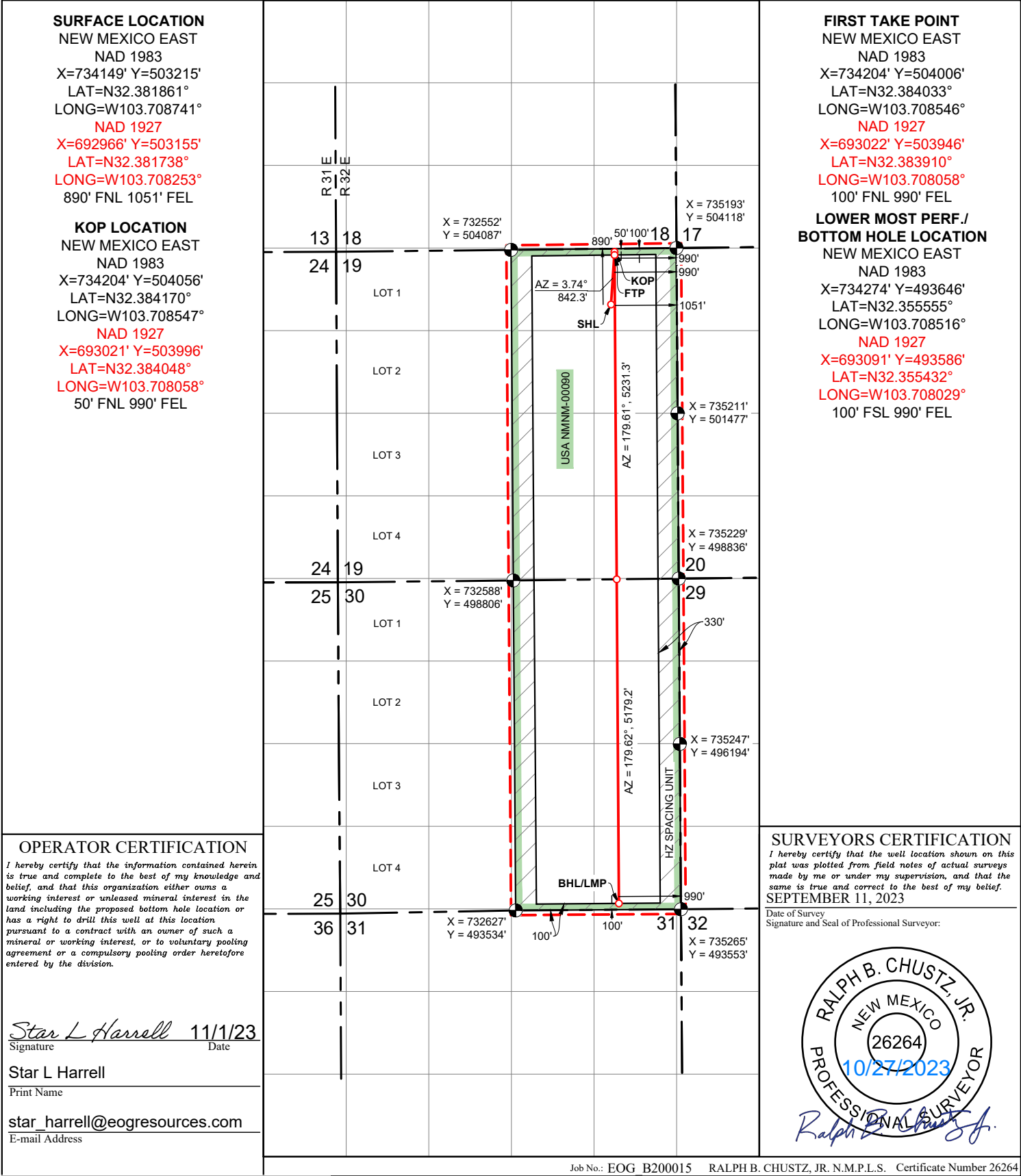
State of New Mexico  
Energy, Minerals & Natural Resources Department  
OIL CONSERVATION DIVISION  
1220 South St. Francis Dr.  
Santa Fe, New Mexico 87505

Form C-102  
Revised August 1, 2011  
Submit one copy to appropriate  
District Office  
☐ AMENDED REPORT

WELL LOCATION AND ACREAGE DEDICATION PLAT

API Number 30-025-52067		Pool Code 97366		Pool Name Bilbrey Basin; Bone Spring, South					
Property Code 333115		Property Name AMAZING 19 FED						Well Number 204H	
OGRID No. 7377		Operator Name EOG RESOURCES, INC.						Elevation 3652'	
Surface Location									
UL or lot no. A	Section 19	Township 22 S	Range 32 E	Lot Idn	Feet from the 890	North/South line NORTH	Feet from the 1051	East/West line EAST	County LEA
Bottom Hole Location If Different From Surface									
UL or lot no. P	Section 30	Township 22 S	Range 32 E	Lot Idn	Feet from the 100	North/South line SOUTH	Feet from the 990	East/West line EAST	County LEA
Dedicated Acres 640		Joint or Infill		Consolidated Code		Order No. LEASE WELL			

No allowable will be assigned to this completion until all interests have been consolidated or a non-standard unit has been approved by the division.



Form C-102  
Revised August 1, 2011  
Submit one copy to appropriate  
District Office  
☐ AMENDED REPORT

DISTRICT I  
1625 N. French Dr., Hobbs, NM 88240  
Phone: (575) 393-6161 Fax: (575) 393-0720

DISTRICT II  
811 S. First St., Artesia, NM 88210  
Phone: (575) 748-1283 Fax: (575) 748-9720

DISTRICT III  
1000 Rio Brazos Rd., Aztec, NM 87410  
Phone: (505) 334-6178 Fax: (505) 334-6170

DISTRICT IV  
1220 S. St. Francis Dr., Santa Fe, NM 87505  
Phone: (505) 476-3460 Fax: (505) 476-3462

State of New Mexico  
Energy, Minerals & Natural Resources Department  
OIL CONSERVATION DIVISION  
1220 South St. Francis Dr.  
Santa Fe, New Mexico 87505

Form C-102  
Revised August 1, 2011  
Submit one copy to appropriate  
District Office

☐ AMENDED REPORT

WELL LOCATION AND ACREAGE DEDICATION PLAT

API Number 30-025-52133		Pool Code 97366		Pool Name Bilbrey Basin; Bone Spring, South					
Property Code 333115		Property Name AMAZING 19 FED						Well Number 206H	
OGRID No. 7377		Operator Name EOG RESOURCES, INC.						Elevation 3653'	

Surface Location

UL or lot no.	Section	Township	Range	Lot Idn	Feet from the	North/South line	Feet from the	East/West line	County
A	19	22 S	32 E		920	NORTH	1051	EAST	LEA

Bottom Hole Location If Different From Surface

UL or lot no.	Section	Township	Range	Lot Idn	Feet from the	North/South line	Feet from the	East/West line	County
O	30	22 S	32 E		100	SOUTH	1650	EAST	LEA

Dedicated Acres 640	Joint or Infill	Consolidated Code	Order No.
			LEASE WELL

No allowable will be assigned to this completion until all interests have been consolidated or a non-standard unit has been approved by the division.

**SURFACE LOCATION**  
NEW MEXICO EAST  
NAD 1983  
X=734149' Y=503185'  
LAT=N32.381778°  
LONG=W103.708741°  
NAD 1927  
X=692966' Y=503125'  
LAT=N32.381656°  
LONG=W103.708253°  
920' FNL 1051' FEL

**KOP LOCATION**  
NEW MEXICO EAST  
NAD 1983  
X=733544' Y=504048'  
LAT=N32.384160°  
LONG=W103.710684°  
NAD 1927  
X=692361' Y=503988'  
LAT=N32.384037°  
LONG=W103.710196°  
50' FNL 1650' FEL

**FIRST TAKE POINT**  
NEW MEXICO EAST  
NAD 1983  
X=733544' Y=503998'  
LAT=N32.384022°  
LONG=W103.710684°  
NAD 1927  
X=692362' Y=503938'  
LAT=N32.383900°  
LONG=W103.710196°  
100' FNL 1650' FEL

**LOWER MOST PERF./  
BOTTOM HOLE LOCATION**  
NEW MEXICO EAST  
NAD 1983  
X=733614' Y=493641'  
LAT=N32.355552°  
LONG=W103.710653°  
NAD 1927  
X=692431' Y=493581'  
LAT=N32.355429°  
LONG=W103.710166°  
100' FSL 1650' FEL

**OPERATOR CERTIFICATION**  
I hereby certify that the information contained herein is true and complete to the best of my knowledge and belief, and that this organization either owns a working interest or unleased mineral interest in the land including the proposed bottom hole location or has a right to drill this well at this location pursuant to a contract with an owner of such a mineral or working interest, or to voluntary pooling agreement or a compulsory pooling order heretofore entered by the division.

Star L Harrell 11/1/23  
Signature Date

Star L Harrell  
Print Name

star\_harrell@eogresources.com  
E-mail Address

**SURVEYORS CERTIFICATION**  
I hereby certify that the well location shown on this plat was plotted from field notes of actual surveys made by me or under my supervision, and that the same is true and correct to the best of my belief.  
SEPTEMBER 11, 2023  
Date of Survey  
Signature and Seal of Professional Surveyor:

RALPH B. CHUSTZ, JR.  
NEW MEXICO  
26264  
10/27/2023  
PROFESSIONAL SURVEYOR

Job No.: EOG B200015 RALPH B. CHUSTZ, JR. N.M.P.L.S. Certificate Number 26264

Form C-102  
Revised August 1, 2011  
Submit one copy to appropriate  
District Office  
☐ AMENDED REPORT

State of New Mexico  
Energy, Minerals & Natural Resources Department  
OIL CONSERVATION DIVISION  
1220 South St. Francis Dr.  
Santa Fe, New Mexico 87505

Submit one copy to appropriate  
District Office

☐ AMENDED REPORT

DISTRICT I  
1625 N. French Dr., Hobbs, NM 88240  
Phone: (575) 393-6161 Fax: (575) 393-0720

DISTRICT II  
811 S. First St., Artesia, NM 88210  
Phone: (575) 748-1283 Fax: (575) 748-9720

DISTRICT III  
1000 Rio Brazos Rd., Aztec, NM 87410  
Phone: (505) 334-6178 Fax: (505) 334-6170

DISTRICT IV  
1220 S. St. Francis Dr., Santa Fe, NM 87505  
Phone: (505) 476-3460 Fax: (505) 476-3462

State of New Mexico  
Energy, Minerals & Natural Resources Department  
OIL CONSERVATION DIVISION  
1220 South St. Francis Dr.  
Santa Fe, New Mexico 87505

Form C-102  
Revised August 1, 2011  
Submit one copy to appropriate  
District Office  
☐ AMENDED REPORT

WELL LOCATION AND ACREAGE DEDICATION PLAT

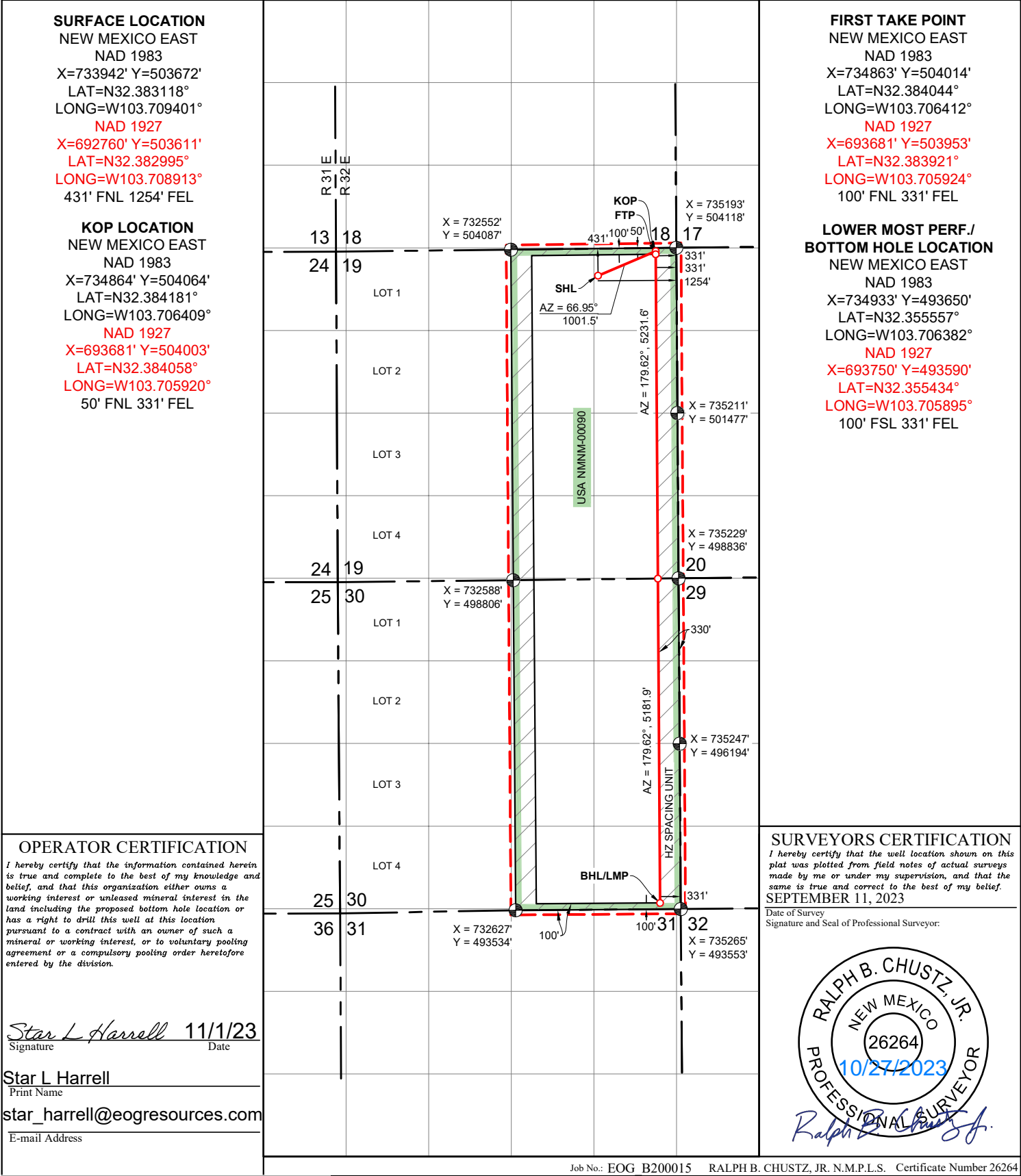
API Number 30-025-52071		Pool Code 97366		Pool Name Bilbrey Basin; Bone Spring, South					
Property Code 333115		Property Name AMAZING 19 FED						Well Number 501H	
OGRID No. 7377		Operator Name EOG RESOURCES, INC.						Elevation 3653'	

Surface Location									
UL or lot no. A	Section 19	Township 22 S	Range 32 E	Lot Idn	Feet from the 431	North/South line NORTH	Feet from the 1254	East/West line EAST	County LEA

Bottom Hole Location If Different From Surface									
UL or lot no. P	Section 30	Township 22 S	Range 32 E	Lot Idn	Feet from the 100	North/South line SOUTH	Feet from the 331	East/West line EAST	County LEA

Dedicated Acres 640	Joint or Infill	Consolidated Code	Order No. LEASE WELL
------------------------	-----------------	-------------------	-------------------------

No allowable will be assigned to this completion until all interests have been consolidated or a non-standard unit has been approved by the division.



Form C-102  
Revised August 1, 2011  
Submit one copy to appropriate  
District Office  
☐ AMENDED REPORT

Form C-102  
Revised August 1, 2011  
Submit one copy to appropriate  
District Office  
☐ AMENDED REPORT

Form C-102  
Revised August 1, 2011  
Submit one copy to appropriate  
District Office  
☐ AMENDED REPORT

Form C-102  
Revised August 1, 2011  
Submit one copy to appropriate  
District Office  
☐ AMENDED REPORT

Sante Fe Main Office  
Phone: (505) 476-3441

General Information  
Phone: (505) 629-6116

Online Phone Directory  
<https://www.emnrd.nm.gov/ocd/contact-us>

State of New Mexico  
Energy, Minerals and Natural Resources  
Oil Conservation Division  
1220 S. St Francis Dr.  
Santa Fe, NM 87505

CONDITIONS

Action 325801

CONDITIONS

Operator: EOG RESOURCES INC 5509 Champions Drive Midland, TX 79706	OGRID: 7377
	Action Number: 325801
	Action Type: [C-103] Sub. General Sundry (C-103Z)

CONDITIONS

Created By	Condition	Condition Date
sarah.clelland	Please review the content of the order to ensure you are familiar with the authorities granted and any conditions of approval. If you have any questions regarding this matter, please contact me.	2/14/2025