

Santa Fe Main Office
Phone: (505) 476-3441
General Information
Phone: (505) 629-6116

State of New Mexico
Energy, Minerals and Natural Resources

Form C-103
Revised July 18, 2013

Online Phone Directory Visit:
<https://www.emnrd.nm.gov/ocd/contact-us/>

OIL CONSERVATION DIVISION
1220 South St. Francis Dr.
Santa Fe, NM 87505

SUNDRY NOTICES AND REPORTS ON WELLS (DO NOT USE THIS FORM FOR PROPOSALS TO DRILL OR TO DEEPEN OR PLUG BACK TO A DIFFERENT RESERVOIR. USE "APPLICATION FOR PERMIT" (FORM C-101) FOR SUCH PROPOSALS.) 1. Type of Well: Oil Well <input checked="" type="checkbox"/> Gas Well <input type="checkbox"/> Other <input type="checkbox"/>		WELL API NO. 025-02849
2. Name of Operator Maverick Permian LLC		5. Indicate Type of Lease STATE <input type="checkbox"/> FEE <input type="checkbox"/>
3. Address of Operator 1000 Main Street Ste 2900 Houston, TX 77002		6. State Oil & Gas Lease No.
4. Well Location Unit Letter M : 660 feet from the South line and 660 feet from the West line Section 21 17S Township 35R Range NMPM County		7. Lease Name or Unit Agreement Name EAST VACUUM (GSA) UNIT
11. Elevation (Show whether DR, RKB, RT, GR, etc.)		8. Well Number 331199
10. Pool name or Wildcat		9. OGRID Number

12. Check Appropriate Box to Indicate Nature of Notice, Report or Other Data

NOTICE OF INTENTION TO: PERFORM REMEDIAL WORK <input type="checkbox"/> PLUG AND ABANDON <input checked="" type="checkbox"/> TEMPORARILY ABANDON <input type="checkbox"/> CHANGE PLANS <input type="checkbox"/> PULL OR ALTER CASING <input type="checkbox"/> MULTIPLE COMPL <input type="checkbox"/> DOWNHOLE COMMINGLE <input type="checkbox"/> CLOSED-LOOP SYSTEM <input type="checkbox"/> OTHER: <input type="checkbox"/>		SUBSEQUENT REPORT OF: REMEDIAL WORK <input type="checkbox"/> ALTERING CASING <input type="checkbox"/> COMMENCE DRILLING OPNS. <input type="checkbox"/> P AND A <input type="checkbox"/> CASING/CEMENT JOB <input type="checkbox"/> OTHER: <input type="checkbox"/>	
---	--	---	--

13. Describe proposed or completed operations. (Clearly state all pertinent details, and give pertinent dates, including estimated date of starting any proposed work). SEE RULE 19.15.7.14 NMAC. For Multiple Completions: Attach wellbore diagram of proposed completion or recompletion.

Maverick is submitting the sub workover paperowrk. This is a failed TA turned P&A.

Spud Date:

Rig Release Date:

I hereby certify that the information above is true and complete to the best of my knowledge and belief.

SIGNATURE Nicole Lee TITLE Regulatory Lead DATE 3/3/2025

Type or print name Nicole Lee E-mail address: nicole.lee@mavresources.com PHONE: 7134378097
For State Use Only

APPROVED BY: _____ TITLE _____ DATE _____
 Conditions of Approval (if any): _____



1111 Bagby Street • Suite 1600
Houston • Texas • 77002
713-437-8000

East Vacuum GB-SA Unit 2175-002 P&A Procedure

Note: Attempted to TA well in January 2025. CIBP set @ 4,240' above San Andres perforations. Cement dump bailed on CIBP. Tagged TOC @ 4,204'. Unable to MIT well. Casing leak identified from 2,552' – 3,194'.

1. MIRU WOR & equipment.
2. ND WH. NU BOP's.
3. Ensure well is dead. Kill well if needed.
4. POOH with 2-7/8" kill string.
5. Run CBL from 4,204' to surface.

Any cement plug above TOC will require perf and squeeze. Reference CBL run.

6. RIH with 2-7/8" workstring and 7" packer one joint above tubing bottom to 4,204'. Displace well with gel water.
7. Set packer and pressure test casing and CIBP to 500 psi for 30 min. Bubble test.
8. Unset packer and POOH.
9. RIH with workstring to 4,204'.

10. San Andres & Queen Plug:

Spot 100 sx Class C cement on CIBP at 4,204'. WOC 4 hrs. Tag at 3,800' or higher. Record cement plug top.

11. Yates & B. Salt Plug:

Plug covers top of casing leak at 2,552' and base of casing leak at 3,194'. Spot 200 sx Class C cement plug at 3,294'. WOC 4 hrs. Tag at 2,452' or higher. Record cement plug top.

12. T. Salt & Rustler Plug:

Perforate 7" casing at 1,996'. Attempt to squeeze. Do not exceed 500 psi. Squeeze 100 sx Class C cement at 1,996' and leave a cement plug from 1,605' – 1,996'. WOC 4 hrs. Tag at 1,605' or higher. Record cement plug top.

13. Casing Shoe Plug:

Perforate 7" casing at 883'. Attempt to squeeze. Do not exceed 500 psi. Squeeze 50 sx Class C cement at 883' and leave a cement plug from 683' – 883'. WOC 4 hrs. Tag at 683' or higher. Record cement plug top.

14. Surface Plug:

Perforate 7" casing at 100'. Attempt to squeeze. Do not exceed 500 psi. Squeeze 25 sx Class C cement at 100'. Circulate cement to surface and top fill. WOC 4 hrs. Bubble test.

15. Cut wellhead and install AGL dry hole marker.
16. RDMO WOR & equipment.

State: New Mexico
County: Lea
Spud Date: 9/3/1938

Maverick Permian LLC
East Vacuum GB-SA Unit 2175-002
API# 30-025-02849

PROPOSED WBD
2/26/2024

Surface Casing:
10 3/4" 36#

MD

833'

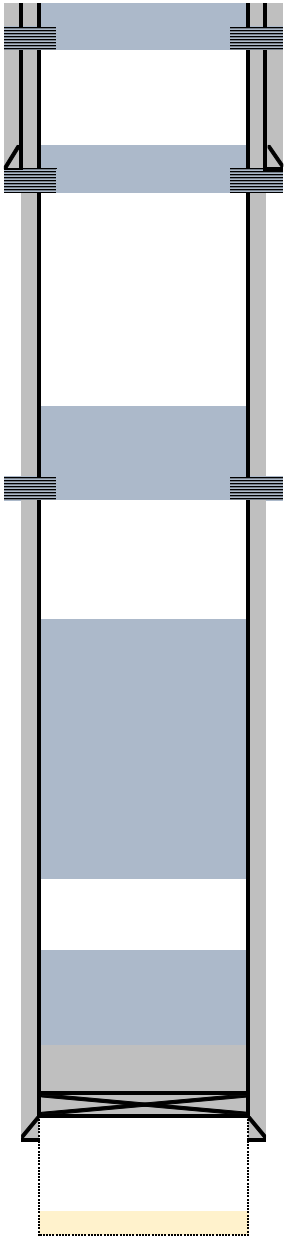
1705' RUSTLER
1896' T. SALT
2891' B.SALT
3087' YATES
3900' QUEEN

Production Casing:
7" 24#
Cmt w/ 225 sx to est.

4,290'

Open Hole:
4,290' - 4,670'

4,670'



MD

100'

683'

883'

1605'

1996'

2452'

3294'

3800'

4,204'

4,240'

4,600'

SURFACE PLUG
Perf 7" casing @ 100'
Attempt sq. DO NOT exceed 500 psi.
Squeeze 25 sx Class C cement plug.
Circ cmt to surface and top fill.

CASING SHOE PLUG
Perf 7" casing @ 883'
Attempt sq. DO NOT exceed 500 psi.
Squeeze 50 sx Class C cement plug.
WOC 4 hrs. Tag and record plug depth.

T.SALT & RUSTLER PLUG
Perf 7" casing @ 1,996'
Attempt sq. DO NOT exceed 500 psi.
Spot 100 sx of Class C cement @ 1,996'
WOC 4 hrs. Tag and record plug depth.

YATES & B.SALT PLUG
Spot 200 sx of Class C cement @ 3,294'
WOC 4 hrs. Tag and record plug depth.
Plug covers top of casing leak at 2,552'
Plug covers base of casing leak at 3,194'

Casing Leak located from 2,552' - 3,194'

SAN ANDRES PLUG
CIBP @ 4,240'
TOC @ 4,204'
Run CBL from TOC to surface
Spot 100 sx of Class C cement @ 4,204'
WOC 4 hrs. Tag and record plug depth.

San Andres Open Hole
4,290' - 4,670'
Fill @ 4,600'



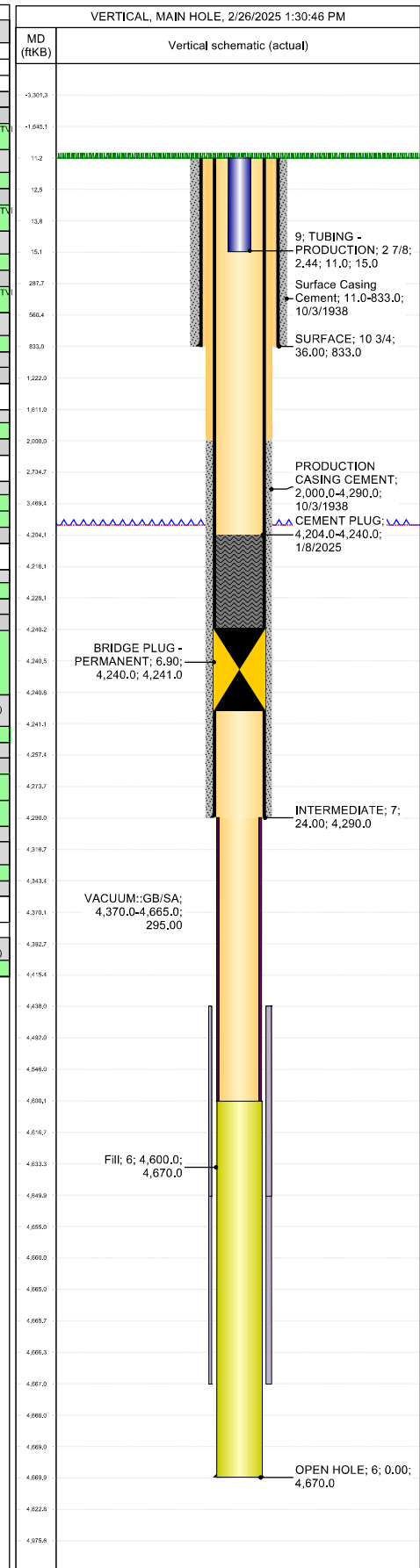
EAST VACUUM GB-SA UNIT 2175-002

Wellbore Diagram

Well Header			
API # 3002502849	State NEW MEXICO	County LEA	District PERMIAN CONVENTIONAL
Division PERMIAN	Business Unit MAVERICK PERMIAN	Region RG_SE_NEW_MEXICO	Area A_EVGSAU
			Total Depth (ftKB) 4,670.0

Wellbore Sections														
Section Des		Size (in)		Act Top (ftKB)	Act Top (TVD) (ftKB)	Act Btm (ftKB)	Act Btm (TVD) (ftKB)	Start Date		End Date				
INTERMEDIATE		8 3/4		11.0		4,290.0		10/3/1938		10/3/1938				
SURFACE		12 1/4		11.0		833.0		10/3/1938		10/3/1938				
OPEN HOLE		6		4,290.0		4,670.0		10/3/1938		10/3/1938				
Casing Strings														
Casing String: SURFACE 10 3/4" Set Depth: 833.0														
Casing Description		Run Date		OD (in)	OD Nom Max	ID (in)	ID Nom Min	HW/Len (lb/ft)	String Grade	Length (ft)	Top (ftKB)	Set Depth (ftKB)		
SURFACE		10/3/1938 00:00		10 3/4	10 3/4	10.19	10.192	36.00		822.00	11.0			
Item Des		Joints in Tally	OD (in)	ID (in)	Wt (lb/ft)	Grade	Len (ft)	Qty	Top (ftKB)	Btm (ftKB)	Top (TVD) (ftKB)	Btm (TVD) (ftKB)		
Casing Joints		0	10 3/4	10.192	36.00		822.00		11.0	833.0				
Casing String: INTERMEDIATE 7" Set Depth: 4,290.0														
Casing Description		Run Date		OD (in)	OD Nom Max	ID (in)	ID Nom Min	HW/Len (lb/ft)	String Grade	Length (ft)	Top (ftKB)	Set Depth (ftKB)		
INTERMEDIATE		10/3/1938 00:00		7	7	6.40	6.4	24.00		4,279.00	11.0			
Item Des		Joints in Tally	OD (in)	ID (in)	Wt (lb/ft)	Grade	Len (ft)	Qty	Top (ftKB)	Btm (ftKB)	Top (TVD) (ftKB)	Btm (TVD) (ftKB)		
Casing Joints		0	7	6.4	24.00		4,279.00		11.0	4,290.0				
Casing String: OPEN HOLE 6" Set Depth: 4,670.0														
Casing Description		Run Date		OD (in)	OD Nom Max	ID (in)	ID Nom Min	HW/Len (lb/ft)	String Grade	Length (ft)	Top (ftKB)	Set Depth (ftKB)		
OPEN HOLE		10/3/1938 00:00		6	6	6.40	6.4	24.00		380.00	4,290.0	4,670.0		
Item Des		Joints in Tally	OD (in)	ID (in)	Wt (lb/ft)	Grade	Len (ft)	Qty	Top (ftKB)	Btm (ftKB)	Top (TVD) (ftKB)	Btm (TVD) (ftKB)		
Casing Joints		0	6				380.00		4,290.0	4,670.0				
Cement														
SURFACE CASING CEMENT														
Cementing Start Date		Cementing End Date				String								
10/3/1938 00:00		10/3/1938 00:00				SURFACE, 833.0ftKB								
Stg #	Pump Start Date	Pump End Date	Top (ftKB)	Btm (ftKB)	Top (TVD) (ftKB)	Btm (TVD) (ftKB)								
10/3/1938	10/3/1938		11.0	833.0										
INTERMEDIATE CASING CEMENT														
Cementing Start Date		Cementing End Date				String								
10/3/1938 00:00		10/3/1938 00:00				INTERMEDIATE, 4,290.0ftKB								
Stg #	Pump Start Date	Pump End Date	Top (ftKB)	Btm (ftKB)	Top (TVD) (ftKB)	Btm (TVD) (ftKB)								
10/3/1938	10/3/1938		2,000.0	4,290.0										
CEMENT PLUG														
Cementing Start Date		Cementing End Date				String								
1/8/2025 00:00		1/8/2025 00:00				INTERMEDIATE, 4,290.0ftKB								
Stg #	Pump Start Date	Pump End Date	Top (ftKB)	Btm (ftKB)	Top (TVD) (ftKB)	Btm (TVD) (ftKB)								
1/8/2025	1/8/2025		4,204.0	4,240.0										
Tubing Strings														
Set Depth: 15.0														
Run Job		String		String Max	OD Nom Max	ID (in)	ID Nom Min	Wt (lb/ft)	String Grade	Top (ftKB)	Set Depth (ftKB)	Len (ft)		
TA, 1/2/2025 00:00		TUBING - PRODUCTION set at 15.0ftKB on 1/14/2025 11:00		2 7/8	2 7/8	2.44	2.44	6.40	J-55	11.0		4.00		
Item Des		Len (ft)	OD (in)	ID (in)	Wt (lb/ft)	Grade	Tally J's Run	Tally Len (ft)	Top (ftKB)	Btm (ftKB)	Top (TVD) (ftKB)	Btm (TVD) (ftKB)		
4' SUB		4.00	2 7/8	2.44	6.40	J-55	0		11.0	15.0				
Rod Strings														
Set Depth: 0.0														
Rod Description		Set Depth	Run Date	Run Job	OD (in)	Wt (lb/ft)	String Grade	Top (ftKB)	Set Depth	Set Depth	String Components			
No Rods Left In Well		0.0	1/9/2025	TA, 1/2/2025										
Length (ft)	OD Nominal (in)	Quantity	Wt (lb)	Weight/Length (lb/ft)	Grade	Top Depth (ftKB)	Bottom Depth (ftKB)							
Perforations														
Date		Top (ftKB)		Btm (ftKB)		Top (TVD) (ftKB)		Btm (TVD) (ftKB)		Shot Dens (shots/ft)		Calculated Shot Total	Btm - Top (ft)	
Deviation Surveys														
Date			Description					Job						
Survey Data														
MD (ftKB)	Incl (°)	Azm (°)	Method	TVD (ftKB)	VS (ft)	Depart (ft)	NS (ft)	EW (ft)	DLS (°/100ft)	Build (°/100ft)	Turn (°/100ft)	Unwrap Displace (ft)		

to Imaging: 3/19/2025 8:36:14 AM



Sante Fe Main Office
Phone: (505) 476-3441

General Information
Phone: (505) 629-6116

Online Phone Directory
<https://www.emnrd.nm.gov/oed/contact-us>

State of New Mexico
Energy, Minerals and Natural Resources
Oil Conservation Division
1220 S. St Francis Dr.
Santa Fe, NM 87505

CONDITIONS

Action 441409

CONDITIONS

Operator: Maverick Permian LLC 1000 Main Street, Suite 2900 Houston, TX 77002	OGRID: 331199
	Action Number: 441409
	Action Type: [C-103] Sub. Workover (C-103R)

CONDITIONS

Created By	Condition	Condition Date
gcordero	None	3/14/2025