

Office  
 District I – (575) 393-6161  
 1625 N. French Dr., Hobbs, NM 88240  
 District II – (575) 748-1283  
 811 S. First St., Artesia, NM 88210  
 District III – (505) 334-6178  
 1000 Rio Brazos Rd., Aztec, NM 87410  
 District IV – (505) 476-3460  
 1220 S. St. Francis Dr., Santa Fe, NM  
 87505

State of New Mexico  
 Energy, Minerals and Natural Resources

Form C-103  
 Revised July 18, 2013

OIL CONSERVATION DIVISION  
 1220 South St. Francis Dr.  
 Santa Fe, NM 87505

<b>SUNDRY NOTICES AND REPORTS ON WELLS</b> (DO NOT USE THIS FORM FOR PROPOSALS TO DRILL OR TO DEEPEN OR PLUG BACK TO A DIFFERENT RESERVOIR. USE "APPLICATION FOR PERMIT" (FORM C-101) FOR SUCH PROPOSALS.)		WELL API NO. 30-025-41780
1. Type of Well: Oil Well <input checked="" type="checkbox"/> Gas Well <input type="checkbox"/> Other <input type="checkbox"/>		5. Indicate Type of Lease STATE <input type="checkbox"/> FEE <input checked="" type="checkbox"/> FEDERAL <input type="checkbox"/>
2. Name of Operator Matador Production Company		6. State Oil & Gas Lease No.
3. Address of Operator One Lincoln Centre, 5400 LBJ Freeway, Ste 1500, Dallas, TX 75240		7. Lease Name or Unit Agreement Name ANDERSON 35
4. Well Location Unit Letter <u>L</u> : <u>1655</u> feet from the <u>SOUTH</u> line and <u>330</u> feet from the <u>WEST</u> line Section <u>35</u> Township <u>21S</u> Range <u>32E</u> NMPM County <u>LEA</u>		8. Well Number <u>003H</u>
11. Elevation (Show whether DR, RKB, RT, GR, etc.) 3678 GR		9. OGRID Number 228937
		10. Pool name or Wildcat RED TANK; BONE SPRING

12. Check Appropriate Box to Indicate Nature of Notice, Report or Other Data

NOTICE OF INTENTION TO:		SUBSEQUENT REPORT OF:	
PERFORM REMEDIAL WORK <input type="checkbox"/>	PLUG AND ABANDON <input type="checkbox"/>	REMEDIAL WORK <input type="checkbox"/>	ALTERING CASING <input type="checkbox"/>
TEMPORARILY ABANDON <input type="checkbox"/>	CHANGE PLANS <input type="checkbox"/>	COMMENCE DRILLING OPNS. <input type="checkbox"/>	P AND A <input checked="" type="checkbox"/>
PULL OR ALTER CASING <input type="checkbox"/>	MULTIPLE COMPL <input type="checkbox"/>	CASING/CEMENT JOB <input type="checkbox"/>	
DOWNHOLE COMMINGLE <input type="checkbox"/>			
CLOSED-LOOP SYSTEM <input type="checkbox"/>			
OTHER: <input type="checkbox"/>		OTHER: <input type="checkbox"/>	

13. Describe proposed or completed operations. (Clearly state all pertinent details, and give pertinent dates, including estimated date of starting any proposed work). SEE RULE 19.15.7.14 NMAC. For Multiple Completions: Attach wellbore diagram of proposed completion or recompletion.

1/6/2025: MIRU P&A Package.

1/7/2025: POOH w/ rods; NU & function test BOPs.

1/8/2025: Release TAC, POOH with production tubing; MIRU wireline, RIH & set CIBP at 9,780' WLM.

1/13/2025: Tag CIBP at 9,774' TM; Displace wellbore with MLF, pressure test to 550 psi for 30 minutes, good test; Spot plug #1 at 9,774' on top of CIBP (25 sks class H cmt balanced plug); WOC overnight.

1/14/2025: TOOH w/ tubing; MIRU wireline, Run RCBL from 9,500' to surface, found multiple cement sections behind 5-1/2" casing, Notified NMOCD and shared log files; TIH and tag plug #1 at 9,583' TM; PU and spot plug #2 at 8,785' TM (25 sks class H cement balanced plug).

1/15/2025: PU & spot plug #3 at 6,969' TM (25 sks class C cement balanced plug); PU to 5,755' TM and spot plug #4 (25 sks class C cement balanced plug); PU to 5,040' TM and spot plug #5 (25 sks class C cement balanced plug); POOH with tubing; MIRU wireline, RIH & perf at 4,760' WLM; Attempt to establish circulation thru perfs, unable to inject or circulate; TIH w/ tubing to 4,810' TM & spot plug #6 (35 sks class C cement balanced plug), WOC overnight.

1/16/2025: TIH & tag plug #6 at 4,449' TM; PU to 1,760' TM & spot plug #7 (55 sks class C cement balanced plug); MIRU wireline, RIH & perf at 1,026' WLM; Attempt to establish circulation thru perfs, unable to inject or circulate; RIH to 1,076' TM & spot plug #8 (25 sks class C cement balanced plug), WOC overnight.

1/17/2025: TIH & tag plug #8 at 977' TM; MIRU wireline, RIH & perf at 385' WLM; Establish circulation thru perfs into 8 5/8" casing; Spot plug #9 thru

Spud Date:

Rig Release Date:

I hereby certify that the information above is true and complete to the best of my knowledge and belief.

SIGNATURE Brett Jennings TITLE Regulatory Analyst DATE 02/14/2025

Type or print name Brett Jennings E-mail address: Brett.Jennings@matadorresources.com PHONE: 972-629-2160

**For State Use Only**

APPROVED BY: \_\_\_\_\_ TITLE \_\_\_\_\_ DATE \_\_\_\_\_

Conditions of Approval (if any): \_\_\_\_\_

**Anderson 35 #3H**

**30-025-41780**

**This well was plugged as follows:**

1/6/2025: MIRU P&A Package.

1/7/2025: POOH w/ rods; NU & function test BOPs.

1/8/2025: Release TAC, POOH with production tubing; MIRU wireline, RIH & set CIBP at 9,780' WLM.

1/13/2025: Tag CIBP at 9,774' TM; Displace wellbore with MLF, pressure test to 550 psi for 30 minutes, good test; Spot plug #1 at 9,774' on top of CIBP (25 sks class H cmt balanced plug); WOC overnight.

1/14/2025: TOOH w/ tubing; MIRU wireline, Run RCBL from 9,500' to surface, found multiple cement sections behind 5-1/2" casing, Notified NMOCD and shared log files; TIH and tag plug #1 at 9,583' TM; PU and spot plug #2 at 8,785' TM (25 sks class H cement balanced plug).

1/15/2025: PU & spot plug #3 at 6,969' TM (25 sks class C cement balanced plug); PU to 5,755' TM and spot plug #4 (25 sks class C cement balanced plug); PU to 5,040' TM and spot plug #5 (25 sks class C cement balanced plug); POOH with tubing; MIRU wireline, RIH & perf at 4,760' WLM; Attempt to establish circulation thru perfs, unable to inject or circulate; TIH w/ tubing to 4,810' TM & spot plug #6 (35 sks class C cement balanced plug), WOC overnight.

1/16/2025: TIH & tag plug #6 at 4,449' TM; PU to 1,760' TM & spot plug #7 (55 sks class C cement balanced plug); MIRU wireline, RIH & perf at 1,026' WLM; Attempt to establish circulation thru perfs, unable to inject or circulate; RIH to 1,076' TM & spot plug #8 (25 sks class C cement balanced plug), WOC overnight.

1/17/2025: TIH & tag plug #8 at 877' TM; MIRU wireline, RIH & perf at 385' WLM; Establish circulation thru perfs into 8-5/8" casing; Squeeze plug #9 thru perfs at 385' (Pumped 93 sks class C cement from surface to surface); WOC over weekend.

1/22/2025: Cut off wellhead and found cement at surface in 5-1/2" & 8-5/8" casing stings, Top of cement at 2' in 11-3/4" casing; Topped off with cement; Well was capped and below ground level dryhole marker was installed; Filled cellar & back dragged location; RDMO P&A package.

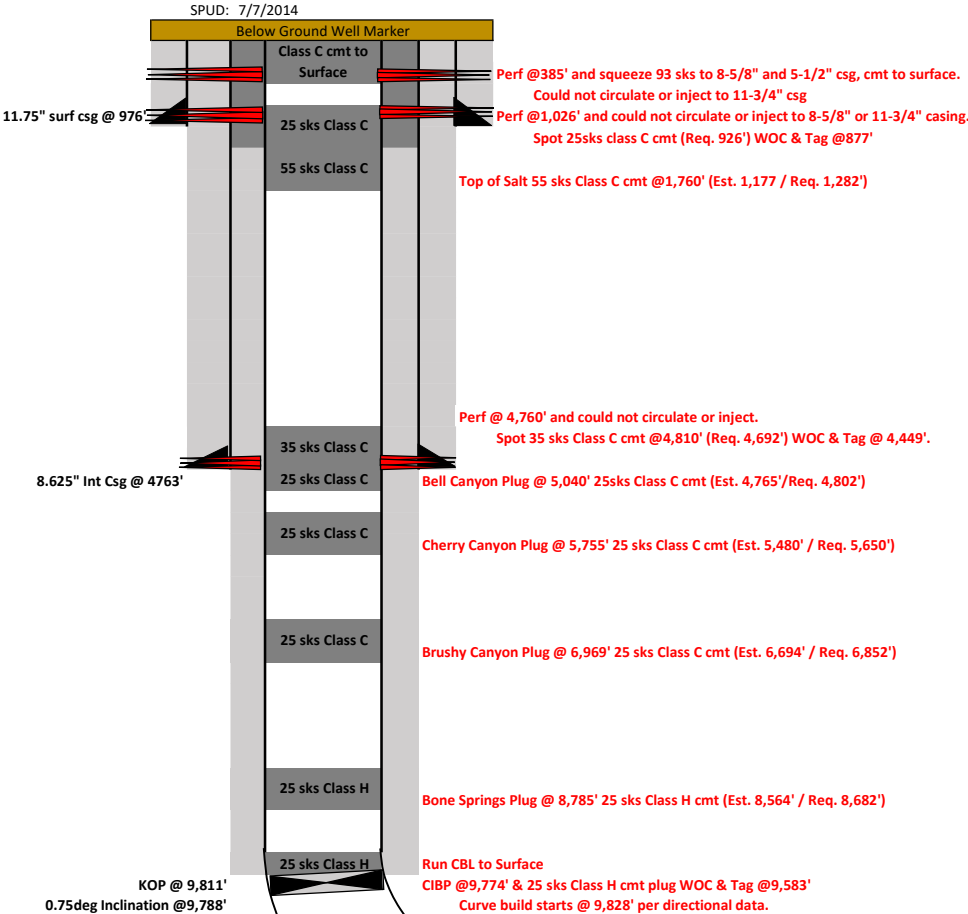
Spud Date: 07/07/2014

Plug Date: RDMO; 1/22/2025

NMOCD Inspector: Bobby Trujillo



As Plugged WBD



WELL NAME:		Anderson 35 #003H							Engineer:		Mark Ritchie
COUNTY:		Lea							Updated by:		
STATE:		New Mexico			Lat	32.43256760	Elevation GL:	3678.1	Date:		11/11/2024
API NO:		30-025-41780			Long	-103.6530609	KB:	3703.1			

CASING RECORD										
CASING TYPE	Hole	Size	Weight	Grade	Connection	MD	TVD	Sacks	Class	TOC
Surface Casing	14.75	11.75	47	J-55	BTC	976'		850	C	0
Intermediate Casing	10.625	8.625	32	J-55	BTC	4,763'		1650	C	0
Production Casing	7.875	5.500	20.00	P-110	GBCD	15,078'		1390		circ to surf

Plug detail							
Cmt Class	Sacks	Top Depth	Bottom Depth	Length	CIBP	Tag? Y/N	Notes
H	25	9,567	9,780	213	9,780'	Y	Cover open perfs
H	25	8,572	8,785	213	NA	N	Bone Springs Top
C	25	6,690	6,955	265	NA	N	Brushy Canyon Top
C	25	5490	5755	265	NA	N	Cherry Canyon Top
C	25	4,775	5,040	265	NA	N	Bell Canyon Top
C	90	4364	4,760	396	NA	Y	Int. Shoe, & Deleware Top
C	25	1135	1400	265	NA	N	Top of Salt
C	165	751	1075	324	NA	Y	Surface Shoe and Rustler Top
C	~115 sks	0	385	385	NA	Y	Surface Plug

Geologic Markers	
Formation	TVD
Rustler	967
Top Salt	1322
Deleware	4742
Bell Canyon	4852
Cherry Canyon	5702
Brushy Canyon	6902
Bone Srping	8732
Wolfcamp	11902

FRACTURE and PRODUCINGL INTERVAL				
Operation	Amount and Material Used	Stages	From	TO
Fracture	16,213,430# Sand with 19012518 gal water	41	10,955'	14895
Re-Frac	14,335 bbls FW 835,080# 100-Mesh	2	10,503'	10,895'

PBTD: 14,975' MD (10,690' TVD)  
TD: 15,081' MD (10,685' TVD)

Sante Fe Main Office  
Phone: (505) 476-3441

General Information  
Phone: (505) 629-6116

Online Phone Directory  
<https://www.emnrd.nm.gov/ocd/contact-us>

State of New Mexico  
Energy, Minerals and Natural Resources  
Oil Conservation Division  
1220 S. St Francis Dr.  
Santa Fe, NM 87505

CONDITIONS

Action 432318

CONDITIONS

Operator: MATADOR PRODUCTION COMPANY One Lincoln Centre Dallas, TX 75240	OGRID: 228937
	Action Number: 432318
	Action Type: [C-103] Sub. Plugging (C-103P)

CONDITIONS

Created By	Condition	Condition Date
gcordero	Clean Location in accordance with 19.15.25.10 NMAC.	3/26/2025
gcordero	Submit C-103Q within one year of plugging.	3/26/2025