

Office
 District I – (575) 393-6161
 1625 N. French Dr., Hobbs, NM 88240
 District II – (575) 748-1283
 811 S. First St., Artesia, NM 88210
 District III – (505) 334-6178
 1000 Rio Brazos Rd., Aztec, NM 87410
 District IV – (505) 476-3460
 1220 S. St. Francis Dr., Santa Fe, NM
 87505

State of New Mexico
 Energy, Minerals and Natural Resources

Form C-103
 Revised July 18, 2013

OIL CONSERVATION DIVISION
 1220 South St. Francis Dr.
 Santa Fe, NM 87505

SUNDRY NOTICES AND REPORTS ON WELLS (DO NOT USE THIS FORM FOR PROPOSALS TO DRILL OR TO DEEPEN OR PLUG BACK TO A DIFFERENT RESERVOIR. USE "APPLICATION FOR PERMIT" (FORM C-101) FOR SUCH PROPOSALS.)		WELL API NO. 30-045-07894
1. Type of Well: Oil Well <input type="checkbox"/> Gas Well <input checked="" type="checkbox"/> Other		5. Indicate Type of Lease STATE <input type="checkbox"/> FEE <input checked="" type="checkbox"/>
2. Name of Operator HILCORP ENERGY COMPANY		6. State Oil & Gas Lease No. FEE
3. Address of Operator 382 Road 3100, Aztec, NM 87410		7. Lease Name or Unit Agreement Name MASDEN GAS COM
4. Well Location Unit Letter <u>A</u> : <u>1130'</u> feet from the <u>North</u> line and <u>820'</u> feet from the <u>East</u> line Section <u>28</u> Township <u>29N</u> Range <u>11W</u> NMPM County <u>San Juan</u>		8. Well Number 1
11. Elevation (Show whether DR, RKB, RT, GR, etc.) 5411'		9. OGRID Number 372171
		10. Pool name or Wildcat BASIN DAKOTA

12. Check Appropriate Box to Indicate Nature of Notice, Report or Other Data

NOTICE OF INTENTION TO:	SUBSEQUENT REPORT OF:
PERFORM REMEDIAL WORK <input type="checkbox"/>	REMEDIAL WORK <input type="checkbox"/>
TEMPORARILY ABANDON <input type="checkbox"/>	ALTERING CASING <input type="checkbox"/>
PULL OR ALTER CASING <input type="checkbox"/>	COMMENCE DRILLING OPNS. <input type="checkbox"/>
DOWNHOLE COMMINGLE <input type="checkbox"/>	P AND A <input checked="" type="checkbox"/>
CLOSED-LOOP SYSTEM <input type="checkbox"/>	CASING/CEMENT JOB <input type="checkbox"/>
OTHER: <input type="checkbox"/>	OTHER: <input type="checkbox"/>

13. Describe proposed or completed operations. (Clearly state all pertinent details, and give pertinent dates, including estimated date of starting any proposed work). SEE RULE 19.15.7.14 NMAC. For Multiple Completions: Attach wellbore diagram of proposed completion or recompletion.

Hilcorp Energy Company plugged and abandoned the subject well on 03/06/2025 per the attached daily reports & schematic.

Spud Date:

Rig Release Date:

I hereby certify that the information above is true and complete to the best of my knowledge and belief.

SIGNATURE Tammy Jones TITLE Operations/Regulatory Technician – Sr. DATE 03/12/2025

Type or print name Tammy Jones E-mail address: tajones@hilcorp.com PHONE: (505)324-5185

For State Use Only

APPROVED BY: _____ TITLE _____ DATE _____

Conditions of Approval (if any):

MASDEN GAS COM 1

30.045.07894

PLUG & ABANDON

2/21/2025 – MIRU. CK PSI: TBG-0#, CSG-40#, (BH SLIGHT WATER FLOW) BH-0#. BDW 5 MINS. FUNCTION TEST BOP. ND WH. NU BOP. RU RIG FLOOR & TBG EQUIPMENT. WORK HANGER FREE. WORK TBG FREE. TOO H W/2-3/8" PROD TBG. TALLY & PU 2-3/8" WORKSTRING. TIH W/4.5" STRING MILL TO 1000'. SIW SDFN.

2/24/2025 – CK PSI; TBG-0#, CSG-0#, BH-40#, BDW 5 MINS. CONTINUE TALLY & PU 2-3/8" WORKSTRING. RIH TO 6010'. TOO H. TBG PLUGGED WITH DRILLING MUD @ JT 89. RU RIG PUMP. APPLY 1000# PSI. WORK TBG CLEAN. PUMP 15 BBLS OF FW TO FLUSH TG. CNT TOO H, LD 4.5" SM. TIH WITH 4.5" CR. (TAGGED MUD / BAD CSG @ 4900'. WORK CR THRU BAD SPOT. TIH WITH CR SLOWLY) SET & RELEASE CR @ 5975'. PUMP 10 BBLS OF FW TO EST CIRC. LOST CIRC FOR 40 BBLS. (WELL UNLOADED GAS / MUD) PUMP 140 BBLS TOTAL. (CIRC 60 BBLS OF MUD) CIRC WELL CLEAN. STING INTO CR ATTEMPT RATE. NO RATE EST. STING OUT. (RE-TEST CSG AFTER WOC). TOO H TO 2000'. SIW, SDFN.

2/25/2025 – CK PSI; TBG-0#, CSG-0#, BH-40#, BDW 5 MINS. CONTINUE TOO H. LEAVE 20 JTS IN HOLE. CIRC WELL TO LOAD WELLBORE WITH FW. TOO H LD STINGER. JSA, RU DRAKE WL. RIH WITH CBL TOOL. LOG FROM 5975' TO SURFACE. RD WL. TIH WITH TAG SUB TO CR @ 5975'. ET CIRC WITH 3 BBLS OF FW. **PLUG #1 (DAKOTA PERFS, GALLUP)** FROM 5975'- 4979' MIX & PUMP 78 SKS OF CLASS G CEMENT, 15.8PPG, 1.15YIELD, 9.2 MIX, 15.97SLRRY, 18.9DIS. LD TOC, REVERSE OUT. TOO H TO 3000'. SIW. SDFN. WOC. **THOMAS VERMERSCH NMOCD REP ON LOCATION.**

2/26/2025 – CK PSI: TG-0#, CSG-0#, BH-25#, BDW 2 MINS. TIH TAG TOC 4950'. LD TBG TO PLUG #2. EST CIRC WITH 3 BBLS OF FW. ATTEMPT PSI TEST. NO TEST. TOO H LD TAG SUB. **(TAG APPROVED BY NMOCD REP THOMAS VERMERSCH)**. JSA, RU DRAKE WL. RIH WITH TAG GUN. PERF 4 HOLES @ 4170'. LD TG. RD WL. TIH WITH 4.5" CR, SET & RELEASE CR @ 4120'. EST CIRC WITH 3 BBLS OF FRESH. PSI TEST CSG TO 560 PSI FOR 15 MINS TEST OK. **NMOCD REP APPROVED PSI TEST.** STING INTO CR EST A RATE OF 2.0BPM @ 250# PSI. **PLUG #2 (MANCOS)** FROM 4170'- 3958'. M&P 53 SKS OF CLASS G CEMENT W/ 2% CAL, 13 ABOVE / 4 BELOW / 36 OUT. (TOC @ 3900)15.8PPG, 1.15 YIELD, 10.8 SLRRY, 6.3 MIX. 15 DIS. LD TOC REVERSE OUT. TOO H LD STINGER. TIH WITH TS TO 3000'. SIW, WOC. TIH TAG TOC @ 3963'. LD TBG TO PLUG #3 @ 3140'. TOO H. LD TAG SUB. RU DRAKE WL. RIH WITH TAG GUN. PERF 4 HOLES @ 3190'. LD TG. EST A RATE OF 2.0 BPM @ 400 PSI. RD WL. TIH WITH 4.5" CR. SET & RELEASE CR @ 3140'. EST CIRC W/ 3BBLS FW. **PLUG #3 (MESA VERDE)** FROM 3190'- 2986'. M&P 56 SKS OF CLASS G CEMENT W/ 2% CAL, 12 ABOVE / 4 BELOW / 40 OUT. (TOC @ 2989')15.8PPG, 1.15 YIELD, 11.4 SLRRY, 6.6 MIX. 11.34 DIS. LD TOC REVERSE OUT. TOO H 10 STANDS. SIW, WOC NIGHT.

2/27/2025 – CK PSI: TG-0#, CSG-0#, BH-25#, BDW 1 MIN. TOO H LD STINGER. TIH TAG TOC @ 2972'. LD TBG TO PLUG #4. TOO H LD TS. JSA. RU DRAKE WL. RIH WITH TAG GUN & PERF 4 HOLES @ 2620'. LD TG. EST A RATE OF 2.0 BPM @ 400 PSI. RD WL. TIH WITH 4.5" CR. SET & RELEASE CR @ 2570'. **PLUG #4 (CHACRA TOP)** FROM 2620'- 2416'. M&P 56 SKS OF CLASS G CEMENT W/ 2% CAL, 12 ABOVE / 4 BELOW / 40 OUT. (TOC @ 2419') 15.8PPG, 1.15 YIELD, 11.4 SLRRY, 6.6 MIX. 9.18 DIS. LD TOC REVERSE OUT. TOO H LD STINGER. TIH WITH TAG SUB. WOC. **THOMAS VERMERSCH NMOCD REP ON LOCATION.** WOC 4 HRS. TIH TAG TOC @ 2409'. LD TBG TO PLUG #5. TOO H. LD

MASDEN GAS COM 1

30.045.07894

PLUG & ABANDON

2/27/2025 (CONT'D) – TS. JSA. RU DRAKE WL. RIH WITH TAG GUN & PERF 4 HOLES @ 1744'. LD TG. EST A RATE OF 1.0 BPM @ 1200 PSI. CONTINUE TO PUMP BREAK DOWN PERFS TO 1.8 BPM @ 1000#. WAIT ON ORDERS. ORDERS TIH SET CR 50' ABOVE PERFS & ATTEMPT SQUEEZE. **(WAIT ON ORDERS REGROUP WITH NMOCD REPS)** SIW, SDFN. DRAIN EQUIPMENT. CLEAN & SECURE LOCATION.

2/28/2025 – CK PSI: TBG-0#, CSG-300#, BH-25#. BDW 5 MINS. **WAIT ON ORDERS FROM NMOCD REP. ORDERS TO SPOT 30 SKS BELOW CR (10 MINIMUM). 56 SKS ABOVE CR & WOC WEEKEND. MONITOR BH PSI.** EST A RATE OF 2.5 @ 400# PSI. TIH WITH 4.5" CR. SET & RELEASE CR @ 1725'. **PLUG #5 (PC TOP, FRT TOP)** FROM 1745'- 930' TOC. M&P 92 SKS OF CLASS G CEMENT. 62 ABOVE/ 2 BELOW/ 28 OUTSIDE. (1603' TOC) 15.8PPG, 1.15 YIELD, 18.8 BSLRRY, 10.9 MIX, 3.6 DIS. LD TOC REVERSE OUT. TOO H LD STINGER. SIW, SDFN. WOC WEEKEND. RU BH VALVE WITH GAUGE & HOSE TO MONITOR & BLEED OFF PSI DURING WEEKEND.

3/3/2025 – CK. PRESSURES. SITP= 0 PSI. SICP= 0 PSI. SIBHP = 40 BLEED DOWN WELL 4 SECONDS. NOTIFIED HILCORP ENGINEER OF 40 PSI ON BH, WAIT ON ORDERS, TIH W/ 11 STDS OF 2-3/8 TBG. TAG CMNT @ 669', NOTIFY HILCORP ENGINEER, TOO H, LD TAG SUB. WAIT ON DRILL COLLARS, PUMU 3 7/8 BLADE BIT, XO, 8 DRILL COLLARS, XO, TIH LD 8 JOINTS, TAG TOP OF CMNT, PU POWER SWVL, DRILL OUT CMNT FROM 669' TO 830'. NOTIFY HILCORP ENGINEER, **NOTIFIED NMOCD, GOT APPROVAL TO TOO H.** LD DRILL COLLARS. SIW, SDFN.

3/4/2025 – CHECK PRESSURE CSG (0PSI), TBG (0 PSI) BDW 0 MIN. RU PRESSURE TEST WELL 600 PSI (GOOD) TEST, RU DRAKE ENERGY WIRELINE RUN PERF GUN PERF @ 625', RD WIRELINE. RU HEC CMTRS, PUMPED INJECTION RATE, 1.5BBLs/ MIN @500 PSI, TIH TBG TO 633' RU **PUMP CEMENT PLUG #6:** 12 SXS 2.03 BBL, .8, 13#, 4.05 GAL/SX. 2.3 BBLs DISP, @ 0PSI, LD 20 JOINTS, RU CMTRS **SQUEEZE** 1/4 BBL AT 250 PSI, SWITCH OVER CONNECT NITROGEN BOTTLE LEAVE @ 250 PSI SHUT IN WITH NITROGEN LEFT OVERNIGHT. SIW, SDFN.

3/5/2025 – CK PSI: TBG-0#, CSG-0#, BH-12#, BDW 1 MIN. MONITOR WH PSI. (BH PSI @ 12#) BLEED BH PSI. SIW MONITOR PSI) (BH PSI @ 8# AFTER 2 HR SHUT IN) FUNCTION TEST BOP. SWAP BOPS. RU RIG FLOOR & TBG EQUIPMENT. PUP. TAG TOC @ 540'. WAIT ON ORDERS. **ORDERS TO SPOT BALANCE PLUG FROM 475'-350' TO COVER KRT TOP. PLUG #7 (KRT TOP)** 475'-350' M&P 10 SKS OF CLASS G CEMENT, 15.8PPG, 1.15YIELD, 2.0 BLSRY, 1.2 MIX, 1.3 DIS. LD TOC, REVERSE OUT. LD ALL TBG. JSA, RU DRAKE WL. RIH WITH TAG GUN. PERF 4 HOLES @ 340'. EST A RATE OF 1.8 BPM @ 400# PSI. NO CIRC FROM BH. WAIT ON ORDERS. WHILE WAITING, ND BH VALVE CHECK FOR BLOCKAGE. (NONE FOUND BH CLEAR). (CK PSI ON MONITOR WELL ON SAME PAD PSI: CSG-65#, BH-0#). REPORT PSI. **ORDERS TO BULLHEAD 60SKS (27 INSIDE/33 OUTSIDE) & WOC. PLUG #8 (CSG HOLE, SURFACE)** FROM 340'-0'. M&P 60 SKS OF CLASS G CEMENT, 27 INSDE / 33 OUTSIDE, 15.8 PPG, 1.15 YIELD, 7.1 MIX, 12.2 BLSRY. LEAVE TOC @ SURFACE. SIW, WOC. SDFN.

3/6/2025 – CK PSI: TBG-0#, CSG-0#, BH-40#. BDW 2 MINS. TAG TOC @ 10' INSIDE 4.5" CSG. RD RIG FLOOR & TBG EQUIPMENT. ND BOP, NU WH. DIG OUT WH. (WAIT ON APPROVAL TO CUT & REMOVE WH) **(NMOCD REP APPROVED WH REMOVAL @ 830 AM)** JSA. CHECK WELL FOR LEL CO2. 0% CUT & REMOVE WH. FIND TOC @ 22' IN ANNULUS. WELD & INSTALL DHM. RU POLY PIPE. TOP OFF DHM & CELLAR WITH 17 SKS OF CLASS G CEMENT, 15.8 PPG, 1.15 YIELD. 3.4 BLSRY, 2.0 MIX. RD. **RIG RELEASED @ 12:30 PM ON 3/6/2025. (THOMAS VERMERSCH NMOCD REP ON LOCATION)**

Tammy Jones

From: Kuehling, Monica, EMNRD <monica.kuehling@emnrd.nm.gov>
Sent: Wednesday, March 5, 2025 12:29 PM
To: Joe Zimmerman
Cc: Farmington Regulatory Techs; Clay Padgett; Lee Murphy; John LaMond; Oscar Sanchez - (C)
Subject: Re: [EXTERNAL] RE: Masden Gas Com 1_P&A NOI_OCD Approved

CAUTION: External sender. DO NOT open links or attachments from UNKNOWN senders.

Approved
Thank you
Monica Kuehling
Nmocd

Get [Outlook for iOS](#)

From: Joe Zimmerman <Joseph.Zimmerman@hilcorp.com>
Sent: Wednesday, March 5, 2025 12:06:26 PM
To: Kuehling, Monica, EMNRD <monica.kuehling@emnrd.nm.gov>
Cc: Farmington Regulatory Techs <FarmingtonRegulatoryTechs@hilcorp.com>; Clay Padgett <cpadgett@hilcorp.com>; Lee Murphy <lmurphy@hilcorp.com>; John LaMond <jlamond@hilcorp.com>; Oscar Sanchez - (C) <Oscar.Sanchez@hilcorp.com>
Subject: RE: [EXTERNAL] RE: Masden Gas Com 1_P&A NOI_OCD Approved

Hi Monica,

As discussed, we will run in and pump a plug over the Kirtland from 475'-350', we will reverse out, run in and perforate at 340' and attempt to circulate cement to surface and pump our surface plug.

- Joe Z.

From: Kuehling, Monica, EMNRD <monica.kuehling@emnrd.nm.gov>
Sent: Tuesday, March 4, 2025 8:30 AM
To: Joe Zimmerman <Joseph.Zimmerman@hilcorp.com>
Cc: Farmington Regulatory Techs <FarmingtonRegulatoryTechs@hilcorp.com>; Clay Padgett <cpadgett@hilcorp.com>; Lee Murphy <lmurphy@hilcorp.com>; John LaMond <jlamond@hilcorp.com>; Oscar Sanchez - (C) <Oscar.Sanchez@hilcorp.com>
Subject: RE: [EXTERNAL] RE: Masden Gas Com 1_P&A NOI_OCD Approved

CAUTION: External sender. DO NOT open links or attachments from UNKNOWN senders.

NMOCD approves below

Thank you

Monica Kuehling
Compliance Officer Supervisor
Deputy Oil and Gas Inspector
New Mexico Oil Conservation Division

North District

Cell Phone: 505-320-0243

Email - monica.kuehling@emnrd.nm.gov

From: Joe Zimmerman <Joseph.Zimmerman@hilcorp.com>

Sent: Tuesday, March 4, 2025 7:29 AM

To: Kuehling, Monica, EMNRD <monica.kuehling@emnrd.nm.gov>

Cc: Farmington Regulatory Techs <FarmingtonRegulatoryTechs@hilcorp.com>; Clay Padgett <cpadgett@hilcorp.com>; Lee Murphy <lmurphy@hilcorp.com>; John LaMond <jlamond@hilcorp.com>; Oscar Sanchez - (C) <Oscar.Sanchez@hilcorp.com>

Subject: RE: [EXTERNAL] RE: Masden Gas Com 1_P&A NOI_OCD Approved

Good morning, Monica,

As discussed yesterday, we will perforate at 625' and attempt to squeeze 12 sacks of Ultra Fine cement. We will then shut the well in with pressure applied to the well (not to exceed a 0.8 psi/ft gradient) and let it set overnight.

Thanks,

- Joe Z.

From: Kuehling, Monica, EMNRD <monica.kuehling@emnrd.nm.gov>

Sent: Thursday, February 27, 2025 4:09 PM

To: Joe Zimmerman <Joseph.Zimmerman@hilcorp.com>

Cc: Farmington Regulatory Techs <FarmingtonRegulatoryTechs@hilcorp.com>; Clay Padgett <cpadgett@hilcorp.com>; Lee Murphy <lmurphy@hilcorp.com>; John LaMond <jlamond@hilcorp.com>; Oscar Sanchez - (C) <Oscar.Sanchez@hilcorp.com>

Subject: RE: [EXTERNAL] RE: Masden Gas Com 1_P&A NOI_OCD Approved

CAUTION: External sender. DO NOT open links or attachments from UNKNOWN senders.

Approved verbally

Thank you

Monica Kuehling

Compliance Officer Supervisor

Deputy Oil and Gas Inspector

New Mexico Oil Conservation Division

North District

Cell Phone: 505-320-0243

Email - monica.kuehling@emnrd.nm.gov

From: Joe Zimmerman <Joseph.Zimmerman@hilcorp.com>

Sent: Thursday, February 27, 2025 2:59 PM

To: Kuehling, Monica, EMNRD <monica.kuehling@emnrd.nm.gov>

Cc: Farmington Regulatory Techs <FarmingtonRegulatoryTechs@hilcorp.com>; Clay Padgett <cpadgett@hilcorp.com>; Lee Murphy <lmurphy@hilcorp.com>; John LaMond <jlamond@hilcorp.com>; Oscar Sanchez - (C) <Oscar.Sanchez@hilcorp.com>

Subject: RE: [EXTERNAL] RE: Masden Gas Com 1_P&A NOI_OCD Approved

Hi Monica,

As discussed, we will modify plug #5 by doing a perf and squeeze below the DV tool as outlined in the procedure on step 5. I calculated the cement volume behind pipe based on 50' below the DV tool up to good cement at ~1,700' based on the CBL. But we will squeeze as much cement as we can to try and shut off the BH pressure. We will pause work overnight and check the BH in the morning.

Thanks,

- Joe Z.

From: Kuehling, Monica, EMNRD <monica.kuehling@emnrd.nm.gov>

Sent: Tuesday, February 25, 2025 4:36 PM

To: Joe Zimmerman <Joseph.Zimmerman@hilcorp.com>

Cc: Farmington Regulatory Techs <FarmingtonRegulatoryTechs@hilcorp.com>; Clay Padgett <cpadgett@hilcorp.com>; Lee Murphy <lmurphy@hilcorp.com>; John LaMond <jlamond@hilcorp.com>; Oscar Sanchez - (C) <Oscar.Sanchez@hilcorp.com>

Subject: RE: [EXTERNAL] RE: Masden Gas Com 1_P&A NOI_OCD Approved

CAUTION: External sender. DO NOT open links or attachments from UNKNOWN senders.

NMOCD approves below

Thank you

Monica Kuehling
Compliance Officer Supervisor
Deputy Oil and Gas Inspector
New Mexico Oil Conservation Division
North District
Cell Phone: 505-320-0243
Email - monica.kuehling@emnrd.nm.gov

From: Joe Zimmerman <Joseph.Zimmerman@hilcorp.com>

Sent: Tuesday, February 25, 2025 3:31 PM

To: Kuehling, Monica, EMNRD <monica.kuehling@emnrd.nm.gov>

Cc: Farmington Regulatory Techs <FarmingtonRegulatoryTechs@hilcorp.com>; Clay Padgett <cpadgett@hilcorp.com>; Lee Murphy <lmurphy@hilcorp.com>; John LaMond <jlamond@hilcorp.com>; Oscar Sanchez - (C) <Oscar.Sanchez@hilcorp.com>

Subject: [EXTERNAL] RE: Masden Gas Com 1_P&A NOI_OCD Approved

CAUTION: This email originated outside of our organization. Exercise caution prior to clicking on links or opening attachments.

Monica,

As discussed, based on the CBL, we will modify PLUG #2 to a perf and squeeze inside/outside plug. We will also modify PLUG #3 by splitting out the MV and Chacra and perforating and squeezing both zones with inside/outside plugs. See attached procedure for updated volumes. We will go to step 15 and pause to evaluate the BH pressure.

Thanks,

- Joe Z.

From: Priscilla Shorty <pshorty@hilcorp.com>
Sent: Wednesday, February 19, 2025 8:53 AM
To: Clay Padgett <cpadgett@hilcorp.com>; Lee Murphy <lmurphy@hilcorp.com>; John LaMond <jlamond@hilcorp.com>; Joe Zimmerman <Joseph.Zimmerman@hilcorp.com>; Austin Harrison <aharrison@hilcorp.com>; Carson Rice <carice@hilcorp.com>; Chad Perkins <cperkins@hilcorp.com>; Dale Crawford <dcrawford@hilcorp.com>; Dani Kuzma <dkuzma@hilcorp.com>; Kelly Davidson <mdavidson@hilcorp.com>; Ramon Hancock <Ramon.Hancock@hilcorp.com>; Farmington Regulatory Techs <FarmingtonRegulatoryTechs@hilcorp.com>
Subject: Masden Gas Com 1_P&A NOI_OCD Approved

Team,

NMOCD has approved the NOI P&A for the Masden Gas Com 1 (30.045.07894). See COAs below and in the attached.

Thanks,

Priscilla Shorty
Operations Regulatory Technician
Hilcorp Energy Company
505-324-5188
pshorty@hilcorp.com

From: OCDOnline@state.nm.us <OCDOnline@state.nm.us>
Sent: Wednesday, February 19, 2025 7:43 AM
To: Priscilla Shorty <pshorty@hilcorp.com>
Subject: [EXTERNAL] The Oil Conservation Division (OCD) has approved the application, Application ID: 430138

CAUTION: External sender. DO NOT open links or attachments from UNKNOWN senders.

To whom it may concern (c/o Priscilla Shorty for HILCORP ENERGY COMPANY),

The OCD has approved the submitted *NOI - Plug & Abandon* (C-103F), for API number (30-#) 30-045-07894, with the following conditions:

- **NMOCD call on Mancos top = 4120 Add Graneros plug at 5980 which looks to be covered by plug 1 - Notify NMOCD 24 hours prior to moving on - monitor string pressures daily report on subsequent - submit all logs prior to subsequent.**

The signed C-103F can be found in the OCD Online: Imaging under the API number (30-#).

If you have any questions regarding this application, please contact me.

Thank you,
Patricia Martinez
575-602-4387
patricial.martinez@emnrd.nm.gov

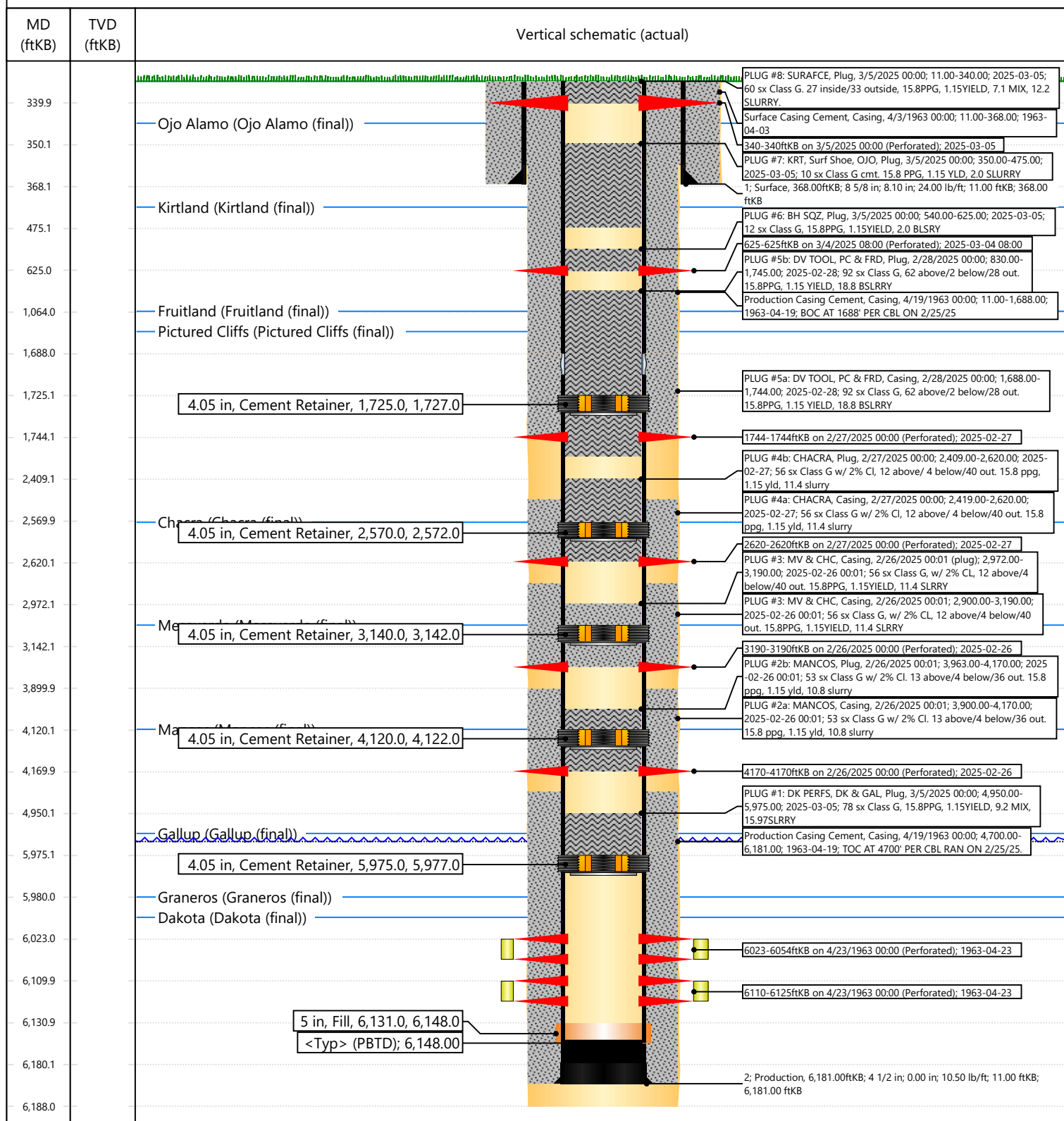


Current Schematic - Version 3

Well Name: MASDEN GAS COM #1

API / UWI 3004507894	Surface Legal Location T29N-R11W-S28	Field Name Basin Dakota	Route 0703	State/Province New Mexico	Well Configuration Type Vertical
Ground Elevation (ft) 5,411.00	Original KB/RT Elevation (ft) 5,422.00	Tubing Hanger Elevation (ft)	RKB to GL (ft) 11.00	KB-Casing Flange Distance (ft)	KB-Tubing Hanger Distance (ft)
Tubing Strings					
Run Date 3/23/2012 11:00	Set Depth (ftKB) 6,081.90	String Max Nominal OD (in) 2 3/8	String Min Nominal ID (in) 2.00	Weight/Length (lb/ft) 4.70	Original Spud Date 4/2/1963 00:00

Original Hole [Vertical]



Sante Fe Main Office
Phone: (505) 476-3441

General Information
Phone: (505) 629-6116

Online Phone Directory
<https://www.emnrd.nm.gov/ocd/contact-us>

State of New Mexico
Energy, Minerals and Natural Resources
Oil Conservation Division
1220 S. St Francis Dr.
Santa Fe, NM 87505

CONDITIONS

Action 441667

CONDITIONS

Operator: HILCORP ENERGY COMPANY 1111 Travis Street Houston, TX 77002	OGRID: 372171
	Action Number: 441667
	Action Type: [C-103] Sub. Plugging (C-103P)

CONDITIONS

Created By	Condition	Condition Date
mkuehling	CBL in log file - well plugged 3/6/2025	3/27/2025