

Submit a Copy To Appropriate District  
Office  
District I – (575) 393-6161  
1625 N. French Dr., Hobbs, NM 88240  
District II – (575) 748-1283  
811 S. First St., Artesia, NM 88210  
District III – (505) 334-6178  
1000 Rio Brazos Rd., Aztec, NM 87410  
District IV – (505) 476-3460  
1220 S. St. Francis Dr., Santa Fe, NM  
87505

State of New Mexico  
Energy, Minerals and Natural Resources

Form C-103  
Revised July 18, 2013

OIL CONSERVATION DIVISION  
1220 South St. Francis Dr.  
Santa Fe, NM 87505

WELL API NO. 30-015-23993
5. Indicate Type of Lease STATE <input checked="" type="checkbox"/> FEE <input type="checkbox"/>
6. State Oil & Gas Lease No.
7. Lease Name or Unit Agreement Name <b>STATE DB COM</b>
8. Well Number <b>#001</b>
9. OGRID Number 192463
10. Pool name or Wildcat [86480] TURKEY TRACK;MORROW (GAS)

<b>SUNDRY NOTICES AND REPORTS ON WELLS</b> (DO NOT USE THIS FORM FOR PROPOSALS TO DRILL OR TO DEEPEN OR PLUG BACK TO A DIFFERENT RESERVOIR. USE "APPLICATION FOR PERMIT" (FORM C-101) FOR SUCH PROPOSALS.)	
1. Type of Well: Oil Well <input type="checkbox"/> Gas Well <input checked="" type="checkbox"/> Other	
2. Name of Operator OXY USA WTP LP	
3. Address of Operator P.O. BOX 4294 HOUSTON, TX 77210	
4. Well Location Unit Letter <u>C</u> : 860 feet from the <u>NORTH</u> line and 2230 feet from the <u>WEST</u> line Section <u>3</u> Township <u>19S</u> Range <u>29E</u> NMPM County <u>EDDY</u>	
11. Elevation (Show whether DR, RKB, RT, GR, etc.)	

12. Check Appropriate Box to Indicate Nature of Notice, Report or Other Data

NOTICE OF INTENTION TO:		SUBSEQUENT REPORT OF:	
PERFORM REMEDIAL WORK <input type="checkbox"/>	PLUG AND ABANDON <input type="checkbox"/>	REMEDIAL WORK <input type="checkbox"/>	ALTERING CASING <input type="checkbox"/>
TEMPORARILY ABANDON <input type="checkbox"/>	CHANGE PLANS <input type="checkbox"/>	COMMENCE DRILLING OPNS. <input type="checkbox"/>	P AND A <input checked="" type="checkbox"/>
PULL OR ALTER CASING <input type="checkbox"/>	MULTIPLE COMPL <input type="checkbox"/>	CASING/CEMENT JOB <input type="checkbox"/>	
DOWNHOLE COMMINGLE <input type="checkbox"/>			
CLOSED-LOOP SYSTEM <input type="checkbox"/>			
OTHER: <input type="checkbox"/>		OTHER: <input type="checkbox"/>	

13. Describe proposed or completed operations. (Clearly state all pertinent details, and give pertinent dates, including estimated date of starting any proposed work). SEE RULE 19.15.7.14 NMAC. For Multiple Completions: Attach wellbore diagram of proposed completion or recompletion.

THE FINAL WELLBORE AND PA JOB NOTES ARE ATTACHED. CUT AND CAP WAS COMPLETE ON 3/6/2025.

Spud Date:

Rig Release Date:

I hereby certify that the information above is true and complete to the best of my knowledge and belief.

SIGNATURE Stephen Janacek TITLE REGULATORY ENGINEER DATE 3/20/2025

Type or print name STEPHEN JANACEK E-mail address: STEPHEN\_JANACEK@OXY.COM PHONE: 713-493-1986

**For State Use Only**

APPROVED BY: \_\_\_\_\_ TITLE \_\_\_\_\_ DATE \_\_\_\_\_

Conditions of Approval (if any):

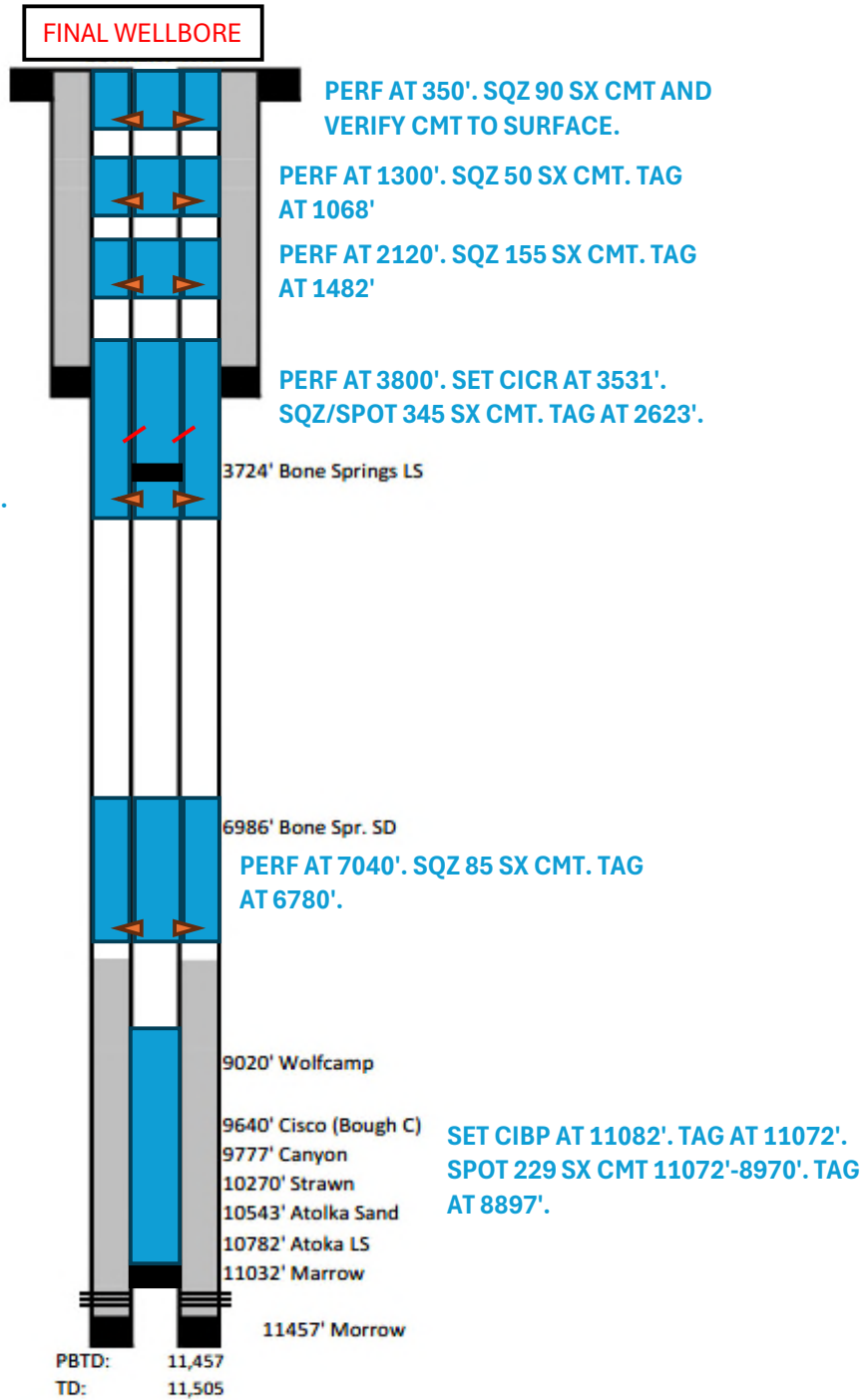
STATE DB COM #001

API 14: 30-015-23993-0000

**Surface Casing:**  
 Hole Size: 17 1/2"  
 Casing Size: 13 3/8" @291'  
 Casing Weight: 48#  
 Cement Details: 700 sxs to 0'  
 Circ 30 sxs @ surf

**Intermediate Casing:**  
 Hole Size: 12 1/4"  
 Casing Size: 8 5/8" @3,023'  
 Casing Weight: 24# & 32#  
 Cement Details: 1700 sxs to 0'  
 Circ 50 sxs @ surf  
**BAD CASING AT 3452'.**

**Production Casing:**  
 Hole Size: 7 7/8"  
 Casing Size: 5 1/2" @11,503'  
 Casing Weight: 17# & 20#  
 Cement Details: 650 sxs to 8,120'  
 TOC @ 8,120' temp log



## STATE DB COM #001

30-015-23993

## PA JOB NOTES

Start Date	Remarks
2/6/2025	CREW TRAVEL TO LOCATION
2/6/2025	HPJSM W/ ALL PERSONAL ON LOCATION
2/6/2025	PERFORMED PRE-TRIP RIG INSPECTION
2/6/2025	LOAD WS TBG & LOAD P&A EQUIP
2/6/2025	DROVE PULLING UNIT & P&A PUMP ASSOCIATED EQUIP FROM THE STATE DA 001 TO THE STATE DB COM 001
2/6/2025	HPJSM W/ ALL PERSONAL ON LOC DISCUSSED FIT FOR DUTY / STAY HYDRATED DRINK WATER TAKE BREAKS EAT FRUIT / ZERO TOLERANCE / HAND & FINGER SAFETY CAMPAIGN / STOP WORK AUTHORITY / LOTO / PPE, MEET & GREET / GOOD COMMUNICATION AT ALL TIMES / PINCH POINTS & HAND PLACEMENT / SUSPENDED LOADS / LINE OF FIRE / ONE TASK AT A TIME / TRIP HAZARDS / H2S / MUSTER AREA / HOUSE KEEPING / UPDATE JSA AS TASK CHANGES
2/6/2025	UNLOAD AND SPOTTED P&A PUMP & ASSOCIATED EQUIPMENT / UNLOAD & SPOTTED BASE BEAM
2/6/2025	LO/TO ON FLOW LINE VALVES / RD FLOW LINE / MIRU AXIS ENERGY RIG 2141 & P&A ASSOCIATED EQUIP / SET PIPE RACKS & MI OIL DOG PIPE RENTAL UNLOAD 350 JTS OF 2-3/8" L-80 WS TBG
2/6/2025	CHECK PSI ON WELL 2-7/8" PROD TBG = 350 PSI, 5.5" PROD CSG = 0 PSI, DIG OUT CELLAR 8-5/8" INTER CSG = 70 PSI, 13-3/8" SURF CSG = 0 PSI
2/6/2025	SECURE WELL SDFN
2/6/2025	CREW TRAVEL BACK TO MAN CAMP
2/7/2025	CREW TRAVEL TO LOCATION
2/7/2025	HPJSM WITH ALL PERSONAL ON LOCATION
2/7/2025	PERFORMED DAILY START UP RIG INSPECTION
2/7/2025	SET CO/FO & FUNCTION TEST
2/7/2025	CHECK PSI ON WELL 2-7/8" PROD TBG = 350 PSI 5.5" PROD CSG = 0 PSI 8-5/8" INTER CSG = 70 PSI 13-3/8" SURF CSG = 0 PSI
2/7/2025	MIRU PUMP ON 5.5" PROD CSG / RU RESTRAINTS ON ALL IRON / TEST LINES TO 1500 PSI / OPEN WELL LOAD BACK SIDE W/ 4 BBLS 10# BW / ATTEMPTED TO PSI TEST CSG TO 600 PSI / HOLD PSI F/ COUPLE OF MIN / PSI DROPPED LOST 200 PSI IN 5 MIN BLEED OFF PSI
2/7/2025	RU PUMP ON TBG / TEST LINES TO 3000 PSI / BLEED OFF GAS HEAD F/ ALL STRINGS TO 0 PSI / PUMP 10# BW DOWN TBG @ 2.5 BPM @ 0 PSI / AFTER 58 BBLS GONE TBG PSI STARTED CLIMBING / CONT PUMPING 10 BBLS @ 1.2 BPM @ 1800 PSI / STOPPED PUMPING / MONITOR WELL / TBG WENT ON SMALL VACUUM
2/7/2025	FUNCTION TEST BOP W/ A GOOD TEST
2/7/2025	ND 5K X 7-1/16" PROD TREE & LD TREE

2/7/2025	NU 5K HYD BOP W/ 5K 2-7/8" & 2-3/8" FLEX PIPE RAMS ON TOP AND 5K BLINDS ON BOTTOM
2/7/2025	RU WORK FLOOR W/ 2-7/8" TBG HANDLING TOOLS, SET UP SAFETY EQUIP, CENTER & LEVEL RIG OVER HOLE
2/7/2025	PICK UP ON TBG TO SET TBG SLIPS IN POSITION TBG NEUTRAL WEIGHT @ 76 PTS / WORK ON GETTING PKR RELEASE W/ TBG TONGS F/ 82 PTS / 76 PTS / 70 PTS GOT PROD PKR RELEASE / LET TBG & CSG EQUALIZE, POOH BREAK & LD TBG HANGER WRAP AROUND
2/7/2025	PERFORM BOP CLOSING DRILL SECURED WELL CREW MET @ MUSTER AREA IN 1 MIN
2/7/2025	POOH STANDING BACK 120 JTS & LD 3 JTS 2-7/8" TBG (TALLY TBG AS POOH) NOTE: WE HAD TO POOH SLOW / PKR WAS DRAGGING 15 PTS OVER COMING OUT & HANGING UP IN CSG COLLARS FOR THE FIRST 60 JTS / SHUT DOWN OPS / TO WINDY TO POOH W/ TBG / WINDS 35 TO 45 MPH W/ GUST UP TO 55 MPH
2/7/2025	SECURE WELL SDFN
2/7/2025	CREW TRAVEL BACK TO MAN CAMP
2/8/2025	CREW TRAVEL TO LOCATION
2/8/2025	HPJSM WITH ALL PERSONAL ON LOCATION
2/8/2025	PERFORMED DAILY START UP RIG INSPECTION
2/8/2025	SET CO/FO & FUNCTION TEST
2/8/2025	CHECK PSI ON WELL 2-7/8" PROD TBG = 100 PSI 5.5" PROD CSG = 150 PSI
2/8/2025	BLEED OFF GAS HEAD F/ ALL STRINGS / PUMP 60 BBLS DOWN TBG & 80 BBLS DOWN CSG 10# BW F/ WELL CONTROL / TBG & CSG ON VACUUM
2/8/2025	OPEN WELL CONT POOH STANDING BACK 232 JTS 2-7/8" TBG / LD 1 JT / BREAK & LD ON/OFF TOOL & 5-1/2" LOK - SET PKR / (TALLY TBG AS POOH / RUN TALLY 5-1/2" PROD PKR WAS SET @ 11,025' (TMD)
2/8/2025	SECURE WELL SDFW
2/8/2025	CREW TRAVEL BACK HOME
2/10/2025	CREW TRAVEL TO LOCATION
2/10/2025	HPJSM WITH ALL PERSONAL ON LOCATION
2/10/2025	PERFORMED DAILY START UP RIG INSPECTION
2/10/2025	SET CO/FO & FUNCTION TEST
2/10/2025	CHECK PSI ON WELL ALL STRINGS = 0 PSI

2/10/2025	<p>OPEN WELL MIRU RTX WL / RU PCE REHEAD ROPE SOCKET / MAKE UP &amp; RIH W/ 4.65" OD GR/JB F/ 5.5" CSG 1-11/16" WEIGHT BAR W/ CCL TO 11,120' (WMD) W/ NO ISSUES POOH W/ GR/JB FOUND FLUID LEVEL @ 500' (+-) F/ SURF BREAK DOWN GR/JB / MAKE UP 4.32" OD CIBP F/ 5.5" CSG RIH W/ WL SET 5.5" CIBP @ 11,082' (WMD) W/ NO ISSUES PULL UP HOLE W/ WL 50' RBIH TAG CIBP @ 11,082' (WMD) CONFIRMED PLUG SET SUCCESSFULLY / POOH W/ WL SETTING TOOL / LOAD BACK SIDE W/ 5 BBLS 10# BW / MAKE UP &amp; CALIBRATE 2.75" OD CBL LOGGING TOOLS AT SURF (ALL GOOD) RIH W/ CBL LOGGING TOOLS FOUND FLUID LEVEL @ SURF / TESTED TOOLS @ 1200' F/ SURF / CONT RIH W/ WL BHA TO 11,082' RUN CBL F/ (11,082' - 0' SURF) (HARD BOND F/ 11,082' - 8140') (FREE PIPE F/ 8140' - 0' SURF) (EST TOC @ 8140' F/ SURF) LD CBL LOGGING TOOLS RDMO RTX WL / (NOTE: TOOLS NOT READING F/ 3452' TO 3458' = 6' POSSIBLE COLLAPSED OR SEPARATED CSG) NOTE: SEND CBL TO MR. DAVID ALVARADO W/ NMOCD FOR REVIEW</p>
2/10/2025	<p>HOOK UP TO 5.5" PROD CSG / TEST LINES / LOAD 5.5" PROD CSG W/ 2 BBLS 10# BW ATTEMPT TO PRESSURE TEST 5.5" CIBP &amp; 5.5" PROD CSG F/ 11,082' - 0' (SURF) CSG NOT HOLDING / EST- INJ RATE 2 BPM @ 800 PSI / AFTER 5 BBLS GONE PSI DROPPED @ 2 BPM @ 100 PSI / AFTER 17 BBLS GONE WELL STARTED TO CIRC UP 8-5/8" INTER CSG / CONT PUMPING CIRC TOTAL OF 120 BBLS 10# BW @ 3 BPM @ 250 PSI W/ FULL RET AT SURF ON 8-5/8" INTER - CSG</p>
2/10/2025	SECURE WELL SDFN
2/10/2025	CREW TRAVEL BACK TO MAN CAMP
2/11/2025	CREW TRAVEL TO LOCATION
2/11/2025	HPJSM WITH ALL PERSONAL ON LOCATION
2/11/2025	PERFORMED DAILY START UP RIG INSPECTION
2/11/2025	SET CO/FO & FUNCTION TEST
2/11/2025	CHECK PSI ON WELL ALL STRINGS = 0 PSI
2/11/2025	PUMP 140 BBLS 10# BW DWN CSG FOR WELL CONTROL CSG ON VACUUM
2/11/2025	<p>OPEN WELL MIRU HYDROSTATIC TBG TESTERS / MAKE UP 5-1/2" (4.625" OD) HD COMPRESSION PKR / RIH HYDROTESTING 2-7/8" WS TBG / BEGIN TO ISOLATE HOLE ON CSG / SET PKR @ 3350' W/ 108 JTS IN THE HOLE (102' ABOVE POSSIBLE BAD SPOT 3452' - 3458') LOAD BACKSIDE W/ 6 BBLS 10# BW / PSI 5.5" PROD CSG F/ 3350' TO 0' (SURF) TO 500 PSI W/ A GOOD TEST / UNSEAT 5.5" PKR RIH W/ 2-7/8" WS TBG SET PKR @ 3474' W/ 112 JTS IN THE HOLE (16' BELOW POSSIBLE BAD SPOT 3452' - 3458') LOAD TBG W/ 1.5 BBLS 10# BW / PSI TEST BELOW PKR (5.5" PROD CSG &amp; CIBP) F/ 3474' - 11,082' TO 500 PSI HOLD PRESSURE F/ 30 MIN W/ A GOOD TEST</p>
2/11/2025	<p>UNSEAT PKR POOH STANDING BACK 112 JTS 2-7/8" WS TBG / BREAK &amp; LD 5.5" HD COMPRESSION PKR</p>
2/11/2025	<p>PICK UP 4' X 2-7/8" PERF TBG SUB RIH OPEN ENDED HYDROTESTING 2-7/8" WS TBG TAG 5.5" CIBP @ 11,072' (TMD) W/ 357 JTS IN THE HOLE 20' OUT ON JT# 358 / LD 1 JT (#358) RDMO HYDROSTATIC TBG TESTERS</p>
2/11/2025	SECURE WELL SDFN

2/11/2025	CREW TRAVEL BACK TO MAN CAMP
2/12/2025	CREW TRAVEL TO LOCATION
2/12/2025	HPJSM WITH ALL PERSONAL ON LOCATION
2/12/2025	PERFORMED DAILY START UP RIG INSPECTION
2/12/2025	SET CO/FO & FUNCTION TEST
2/12/2025	CHECK PSI ON WELL ALL STRINGS = 0 PSI
2/12/2025	OPEN WELL PICK UP 10' X 2-7/8" TBG SUB EOT @ 11,072' W/ 357 JTS IN THE HOLE / RU PUMP ON TBG / TEST LINES / CIRC WELL CLEAN W/ 260 BBLS 10# BW MIX 35.2 GAL OF FLEX GEL W/ 176 BBLS 10# BW
2/12/2025	RU BULK TRK & LOAD BULK TRK W/ 260 SXS CL H CMT / BREAK CIRC W/ 8 BBLS 10# BW 1ST PLUG) SET 5.5" CIBP @ 11,082' BALANCED PLUG F/ 11,072' – 8970' SPOT 229 SXS CLASS H CMT / 15.6# 1.18 YIELD / 48.12 BBLS SLURRY / MIX W/ 5 GAL OF CMT RETARDER / 2167' PLUG CAP / DISPLACE TOC TO 8905' / DISPLACE W/ 51.55 BBLS 10# BW
2/12/2025	LD 10' X 2-7/8" TBG SUB POOH W/ 40 STANDS LD 69 JTS 2-7/8" WS TBG EOT @ 6448' (TMD) W/ 208 JTS IN THE HOLE / REVERSE OUT W/ 45 BBLS 10# BW
2/12/2025	SECURE WELL SDFN
2/12/2025	CREW TRAVEL BACK TO MAN CAMP
2/13/2025	CREW TRAVEL TO LOCATION
2/13/2025	HPJSM WITH ALL PERSONAL ON LOCATION
2/13/2025	PERFORMED DAILY START UP RIG INSPECTION
2/13/2025	SET CO/FO & FUNCTION TEST
2/13/2025	CHECK PSI ON WELL ALL STRINGS = 0 PSI
2/13/2025	OPEN WELL RIH W/ 2-7/8" WS TBG TAG TOC @ 8897' (TMD) W/ 287 JTS IN THE HOLE 10' OUT ON JT# 288
2/13/2025	POOH STANDING BACK 210 JTS & LD 78 JTS 2-7/8" WS TBG / BREAK 4' X 2-7/8" PERF TBG SUB
2/13/2025	MAKE UP & RIH W/ 5.5" (4.625" OD) HD PKR NOTE: PKR WENT THRU BAD SPOT (3452' – 3458') W/ NO ISSUES LEAVE PKR SWINGING @ 4650' W/ 150 JTS IN THE HOLE
2/13/2025	SECURE WELL SDFN
2/13/2025	CREW TRAVEL BACK TO MAN CAMP
2/14/2025	CREW TRAVEL TO LOCATION
2/14/2025	HPJSM WITH ALL PERSONAL ON LOCATION
2/14/2025	PERFORMED DAILY START UP RIG INSPECTION
2/14/2025	SET CO/FO & FUNCTION TEST
2/14/2025	CHECK PSI ON WELL ALL STRINGS = 0 PSI
2/14/2025	OPEN WELL CONT RIH W/ 5.5" HD PKR SET PKR @ 6454' (TMD) W/ 208 JTS IN THE HOLE
2/14/2025	LOAD TBG W/ 3 BBLS 10# BW TEST PKR TO 500 PSI
2/14/2025	MIRU RTX WL / RU PCE / MAKE UP & RIH W/ BHA TO 7040' SHOT 6 SQZ HOLES / POOH W/ WL BHA LD GUN VERIFIED ASF RD WL
2/14/2025	RU CMT PUMP ON TBG / TEST LINES / EST – INJ RATE @ 2 BPM @ 800 PSI PUMP 20 BBLS 10# BW W/ FULL RETURNS AT SURF ON 8-5/8" INTER CSG

2/14/2025	2ND PLUG) PERF @ 7040' SQZ 85 SXS CLASS C CMT / 14.8# 1.32 YIELD / 19.98 BBLS SLURRY / (PLUG CAP 240' IN / OUT / 5.56 BBLS SLURRY / 23.65 SXS / 5.5" PROD CSG) & (14.42 BBLS SLURRY / 61.35 SXS / 7-7/8" OPEN HOLE) / DISPLACE TOC TO 6800' / DISPLACE W/ 45.38 BBLS 10# BW / ISIP = 100 PSI
2/14/2025	SECURE WELL WOC TO TAG / SAFETY CAPTAIN KOBIE MARTIN ARRIVED AT LOCATION PERFORM A WALK AROUND INSPECT EQUIPMENT HAVE SAFETY MEETING WITH OXY SAFETY CAP DISCUSS MEET AND GREET / LRS / LINE OF FIRE
2/14/2025	RU 3/8" BUBBLE TEST HOSE PERFORMED A 30 MIN BUBBLE TEST ON 5.5" PROD CSG BELOW PKR W/ A GOOD TEST / PERFORMED A 30 MINUTE BUBBLE TEST ON 8-5/8" INTER CSG W/ A GOOD TEST
2/14/2025	UNSEAT 5.5" PKR RIH W/ 2-7/8" WS TBG TAG TOC @ 6780' (TMD) W/ 218 JTS IN THE HOLE 16' IN ON JT# 219
2/14/2025	POOH LD 105 JTS 2-7/8" WS TBG SET PKR @ 3531' (TMD) W/ 114 JTS IN THE HOLE
2/14/2025	LOAD TBG W/ 2 BBLS TEST PKR TO 500 PSI
2/14/2025	RU RTX WL / RU PCE / MAKE UP & RIH W/ BHA TO 3800' SHOT 6 SQZ HOLES / POOH W/ WL BHA LD GUN VERIFIED ASF RDMO WL
2/14/2025	RU CMT PUMP ON TBG / TEST LINES / EST - INJ RATE @ 2.8 BPM @ 900 PSI W/ FULL RETURNS AT SURF ON 8-5/8" INTER - CSG KEEP PUMPING BOTTOMS UP F/ 3800' TO SURF TO GET GAS & TRASH OUT (DRIILLING MUD) CIRC WELL CLEAN / PUMP A TOTAL OF 165 BBLS 10# BW (WELL BORE CLEAN READY TO CIRC CMT W/ CICR)
2/14/2025	UNSEAT 5.5" PKR POOH W/ 30 STANDS LEAVE PKR SWINGING @ 1679' TMD (1773' ABOVE BAD SPOT ON CSG @ 3452') W/ 54 JTS IN THE HOLE
2/14/2025	SECURE WELL SDFW & FOR PRESIDENTS DAY / OXY HOLIDAY
2/14/2025	CREW TRAVEL BACK HOME
2/18/2025	CREW TRAVEL TO LOCATION
2/18/2025	AFTER HOLIDAY SAFETY STAND DOWN W/ ALL PERSONAL ON LOC DISCUSSED FIT FOR DUTY / ZERO TOLERANCE / HAND & FINGER SAFETY CAMPAIGN / STOP WORK AUTHORITY
2/18/2025	PERFORMED DAILY START UP RIG INSPECTION
2/18/2025	SET CO/FO & FUNCTION TEST
2/18/2025	CHECK PSI ON WELL ALL STRINGS = 0 PSI
2/18/2025	OPEN WELL CONT POOH STANDING BACK 54 JTS 2-7/8" WS TBG / BREAK & LD 5.5" HD PKR
2/18/2025	MAKE UP (4.312" OD) CICR F/ 5.5" CSG RIH W/ 2-7/8" WS TBG SET CICR @ 3531' (TMD) W/ 114 JTS IN THE HOLE / WENT THROUGH THE MOTIONS TO MAKE SURE WE CAN STING OUT & STING BACK INTO THE CICR



	BREAK CIRC @ 2 BPM @ 1200 PSI CIRC 25 BBLS 10# BW GETTING FULL RETURNS ON 5.5" PROD CSG & 8-5/8" INTER CSG / 3RD PLUG) SET 5.5" CIRC @ 3531' (TMD) GOT APPROVAL F/ NMOCD TO SQZ 345 SX CL C CMT F/ 3800' – 2350' / SQZ 275 SXS CL C CMT / 14.8# 1.32 YIELD / 64.65 BBLS SLURRY / PUMP CMT DOWN THE 5.5" PROD CSG W/ THE 8-5/8" INTER CSG VALVE CLOSED / PUMPING CMT RATE @ 1.5 BPM @ 900 PSI AFTER 275 SXS GONE OPEN 8-5/8" INTER CSG VALVE / CLOSE 5-1/2" PROD CSG VALVE / CONT SQZ 70 SXS CL C CMT / 14.8# 1.32 YIELD / 16.45 BBLS SLURRY / FOR A TOTAL OF 345 SXS / 81.1 BBLS SLURRY / / DISPLACE TO CIRC / DISPLACE W/ 20.44 BBLS 10# BW STING OUT ISIP = 200 PSI / WELL FLOW BACK 3 BBLS (CMT BALANCE OUT IN ALL STRINGS) (PLUG CAP PERF @ 3800' SET CIRC @ 3531' TOC @ 2350') PLUG CAP DETAIL 5-1/2" BELOW CIRC F/ 3531'– 3800' = 264' (6.24 BBLS / 26.54 SXS) 5-1/2" ABOVE CIRC F/ 3529' –2350' = 1179' (27.35 BBLS / 116.34 SXS) 7-7/8" HO F/ 3800' – 3023' = 777' (24 BBLS / 102.08 SXS) 8-5/8" SHOE TO TOC F/ 3023' –2350' = 673' (23.51 BBLS / 100.04 SXS) / POOH LD 38 JTS 2-7/8" WS TBG EOT @ 2350' W/ 76 JTS IN HOLE. REVERSE OUT W/ 20 BBLS 10# BW STAND BACK 76 JTS BREAK DOWN SETTING TOOL / LEFT WELL OPEN FOR 2 HRS LET CMT BALANCE OUT ON 5-1/2" PROD CSG AND 8-5/8" INTER CSG
2/18/2025	INTER CSG
2/18/2025	SECURE WELL SDFN
2/18/2025	CREW TRAVEL BACK TO MAN CAMP
2/19/2025	CREW TRAVEL TO LOCATION
2/19/2025	HPJSM WITH ALL PERSONAL ON LOCATION
2/19/2025	PERFORMED DAILY START UP RIG INSPECTION
2/19/2025	SET CO/FO & FUNCTION TEST
2/19/2025	CHECK PSI ON WELL ALL STRINGS = 0 PSI
2/19/2025	OPEN WELL PICK UP 4' X 2-7/8" PERF TBG RIH W/ 2-7/8" WS TBG TAG TOC @ 2623' (TMD) W/ 84 JTS IN THE HOLE 20' IN ON JT# 85
2/19/2025	PRESSURE TEST PROD CSG TO 500 PSI HOLD PRESSURE F/ 15 MIN W/ A GOOD TEST / CONTACTED MR. DAVID ALVARADO W/ NMOCD LET HIM KNOW WHERE WE TAG GOT APPROVAL TO CONT W/ P&A OPS. AS PROGRAM
2/19/2025	POOH STANDING BACK 38 JTS & LD 47 JTS 2-7/8" WS TBG BREAK & LD 4' X 2-7/8" PERF TBG SUB
2/19/2025	MAKE UP & RIH W/ 5.5" (4.625" OD) 32-A PKR SET PKR @ 1184' (TMD) W/ 38 JTS IN THE HOLE / TEST PKR TO 500 PSI
2/19/2025	MIRU RTX WL / RU PCE / MAKE UP & RIH W/ BHA TO 2120' SHOT 6 SQZ HOLES / POOH W/ WL BHA LD GUN VERIFIED ASF RDMO WL
2/19/2025	RU CMT PUMP ON TBG / TEST LINES / EST – INJ RATE @ 2.5 BPM @ 300 PSI PUMP 20 BBLS 10# BW W/ FULL RETURNS AT SURF ON 8-5/8" INTER CSG
2/19/2025	RU BULK TRK & LOAD BULK TRK W/ 400 SXS CL C CMT / BREAK CIRC 4TH PLUG) PERF @ 2120' SQZ 155 SXS CLASS C CMT / 14.8# 1.32 YIELD / 36.43 BBLS SLURRY / (PLUG CAP 620' / 14.38 BBLS SLURRY / 61.16 SXS IN 5.5" PROD CSG) & (PLUG CAP 620' / 22.05 BBLS SLURRY / 93.84 SXS IN 8-5/8" INTER CSG) / DISPLACE TOC TO 1500' / DISPLACE W/ 14.18 BBLS 10# BW / ISIP = 400 PS
2/19/2025	SECURE WELL SDFN



2/19/2025	CREW TRAVEL BACK TO MAN CAMP
2/20/2025	CREW TRAVEL TO LOCATION
2/20/2025	HPJSM WITH ALL PERSONAL ON LOCATION
2/20/2025	PERFORMED DAILY START UP RIG INSPECTION
2/20/2025	SET CO/FO & FUNCTION TEST
2/20/2025	CHECK PSI ON WELL ALL STRINGS = 0 PSI
2/20/2025	OPEN WELL UNSEAT 5.5" PKR RIH W/ 2-7/8" WS TBG TAG TOC @ 1482' (TMD) W/ 47 JTS IN THE HOLE 12' OUT ON JT# 48
2/20/2025	POOH LD 25 JTS 2-7/8" WS TBG SET PKR @ 720' (TMD) W/ 23 JTS IN THE HOLE / TEST PKR TO 500 PSI
2/20/2025	MIRU RTX WL / RU PCE / MAKE UP & RIH W/ BHA TO 1300' SHOT 6 SQZ HOLES / POOH W/ WL BHA LD GUN VERIFIED ASF RD WL
2/20/2025	EST – INJ RATE @ 2.5 BPM @ 200 PSI PUMP 15 BBLS 10# BW W/ FULL RETURNS AT SURF ON 8-5/8" INTER CSG / 5TH PLUG) PERF @ 1300' SQZ 50 SXS CLASS C CMT / 14.8# 1.32 YIELD / W/ (R-1-11-P 2% CALCIUM CHLORIDE) / 11.75 BBLS SLURRY / (PLUG CAP 200' / 4.64 BBLS SLURRY / 19.73 SXS IN 5.5" PROD CSG) & (PLUG CAP 200' / 7.11 BBLS SLURRY / 30.27 SXS IN 8-5/8" INTER CSG) / DISPLACE TOC TO 1100' / DISPLACE W/ 12.97 BBLS 10# BW / ISIP = 0 PSI
2/20/2025	SECURE WELL WOC TO TAG
2/20/2025	UNSEAT 5.5" PKR RIH W/ 2-7/8" WS TBG TAG TOC @ 1068' (TMD) W/ 34 JTS IN THE HOLE 8' IN ON JT# 35
2/20/2025	POOH LD 34 JTS 2-7/8" WS TBG SET PKR @ 37' W/ 1 JT IN THE HOLE / TEST PKR TO 500 PSI
2/20/2025	RU RTX WL / RIH W/ BHA TO 350' SHOT 6 SQZ HOLES POOH W/ WL BHA LD GUN ASF RDMO RTX WL
2/20/2025	RU CMT PUMP ON TBG / TEST LINES / EST – INJ RATE @ 2.5 BPM @ 200 PSI PUMP 10 BBLS 10# BW W/ FULL RETURNS AT SURF ON 8-5/8" INTER CSG
2/20/2025	UNSEAT & LD 5.5 32-A PKR & 1 JT 2-7/8" TBG / RD WORK FLOOR & ASSOCIATED EQUIP
2/20/2025	ND 5K HYD BOP / NU 5K X 7-1/16" B-1 WH FLANGE
2/20/2025	6TH PLUG) PERF @ 350' SQZ 90 SXS CLASS C CMT / 14.8# 1.32 YIELD / 21.15 BBLS SLURRY / (PLUG CAP 350' / 8.12 BBLS SLURRY / 34.53 SXS IN 5.5" PROD CSG) & (PLUG CAP 350' / 13.03 BBLS SLURRY / 55.47 SXS IN 8-5/8" INTER CSG) F/ 350' – 0' (SURF) GOT FULL RETURNS ON 8-5/8" INTER – CSG CLOSE VALVE ISIP = 500 PSI ON PROD CSG, W/ NO LEAK OFF / WOC TOP OFF HOLE W/ CMT / VERIFY CMT AT SURF / HOOK UP ON THE 13-3/8" SURF CSG / TOP OFF SURF CSG W/ 10 SXS CL C CMT / 14.8# 1.32 YIELD / 2.35 BBLS SLURRY / 27' PLUG CAP / ISIP = 500 PSI ON SURF CSG, W/ NO LEAK OFF
2/20/2025	SECURE WELL SDFN
2/20/2025	CREW TRAVEL BACK TO MAN CAMP
2/21/2025	CREW TRAVEL TO LOCATION
2/21/2025	HPJSM WITH ALL PERSONAL ON LOCATION

	RDMO PU & P&A PUMP ASSOCIATED EQUIP, CLEAN LOCATION P&A JOB COMPLETED / STAGED ALL P&A EQUIP TO SIDE OF LOC READY TO MOVE TO NEXT LOC (WELL READY FOR CUT & CAP) SDFN
2/21/2025	
2/21/2025	CREW TRAVEL BACK HOME

Sante Fe Main Office  
Phone: (505) 476-3441

General Information  
Phone: (505) 629-6116

Online Phone Directory  
<https://www.emnrd.nm.gov/ocd/contact-us>

State of New Mexico  
Energy, Minerals and Natural Resources  
Oil Conservation Division  
1220 S. St Francis Dr.  
Santa Fe, NM 87505

CONDITIONS

Action 444303

CONDITIONS

Operator: OXY USA WTP LIMITED PARTNERSHIP P.O. Box 4294 Houston, TX 772104294	OGRID: 192463
	Action Number: 444303
	Action Type: [C-103] Sub. Plugging (C-103P)

CONDITIONS

Created By	Condition	Condition Date
gcordero	Clean Location in accordance with 19.15.25.10 NMAC.	3/28/2025
gcordero	Submit C-103Q within one year of plugging.	3/28/2025