

Well Name: JAMES RANCH	Well Location: T23S / R31E / SEC 8 / SWSW / 32.3135459 / -103.8080307	County or Parish/State: EDDY / NM
Well Number: 15	Type of Well: CONVENTIONAL GAS WELL	Allottee or Tribe Name:
Lease Number: NMNM02887B	Unit or CA Name: JAMES RANCH 15, JAMES RANCH UNIT	Unit or CA Number: NMNM70965X, NMNM85338
US Well Number: 3001524780	Operator: XTO PERMIAN OPERATING LLC	

Subsequent Report

Sundry ID: 2841592

Type of Submission: Subsequent Report	Type of Action: Plug and Abandonment
Date Sundry Submitted: 03/13/2025	Time Sundry Submitted: 11:49
Date Operation Actually Began: 12/19/2024	

Actual Procedure: XTO Permian Operating LLC., has P&A'd the above mentioned well per the attached P&A Summary Report and WBD. CBL has also been submitted.

SR Attachments

Actual Procedure

- XTO_James_Ranch_Unit_015_CBL_12_22_24_20250313114829.pdf
- James_Ranch_Unit_015_P_A_Summary_Rpt___WBD_20250313114735.pdf

Well Name: JAMES RANCH	Well Location: T23S / R31E / SEC 8 / SWSW / 32.3135459 / -103.8080307	County or Parish/State: EDDY / NM
Well Number: 15	Type of Well: CONVENTIONAL GAS WELL	Allottee or Tribe Name:
Lease Number: NMNM02887B	Unit or CA Name: JAMES RANCH 15, JAMES RANCH UNIT	Unit or CA Number: NMNM70965X, NMNM85338
US Well Number: 3001524780	Operator: XTO PERMIAN OPERATING LLC	

Operator

I certify that the foregoing is true and correct. Title 18 U.S.C. Section 1001 and Title 43 U.S.C. Section 1212, make it a crime for any person knowingly and willfully to make to any department or agency of the United States any false, fictitious or fraudulent statements or representations as to any matter within its jurisdiction. Electronic submission of Sundry Notices through this system satisfies regulations requiring a

Operator Electronic Signature: SHERRY MORROW

Signed on: MAR 13, 2025 11:48 AM

Name: XTO PERMIAN OPERATING LLC

Title: Regulatory Analyst

Street Address: 6401 HOLIDAY HILL ROAD BLDG 5

City: MIDLANDState: TX

Phone: (432) 218-3671

Email address: SHERRY.MORROW@EXXONMOBIL.COM

Field

Representative Name:

Street Address:

City:State:Zip:

Phone:

Email address:

BLM Point of Contact

BLM POC Name: JAMES A AMOS

BLM POC Title: Acting Assistant Field Manager

BLM POC Phone: 5752345927

BLM POC Email Address: jamos@blm.gov

Disposition: Accepted

Disposition Date: 03/18/2025

Signature: James A Amos

Poker Lake Unit 015
API Number 30-015-24780
P&A Summary Report

12/19/24: MIRU.

12/20/24: ND production tree. NU FT PT BOP. PT blinds and pipes to 3500 psi on high side and 300 on low side for 10 minutes each.

12/21/24: Circulate 20 bbls 10# BW down tbgs up csg to ensure tbgs were not plugged up. PT CIBP to 500 psi for 30 minutes. PT w/intermediate open to ensure there was no leak in csg. TOH std back 390 jnts 2-3/8 L80 tbgs.

12/22/24: MIRU WLU. RIH and log out from 12330'. RDMO WLU. TIH 100 jnts 2-3/8 L80 tbgs. EOT @3190'.

12/23/24: TIH 287 jnts 2-3/8 L80 tbgs. EOT @12,302'. Total 387 jnts in the hole. SDFHWE.

1/3/25: Inspections. Circulate 570 bbls SGM @ 2 bpm w/500 psi.

1/4/25: Spotted 133 sks Class H CMT (FW Mix 13.5 bbls, Slurry Vol 25.1 bbls, FOF 592', CTOC 11709') Displaced w/45.25 bbls 10# BW. TOH std back 40 jnts 2-3/8 L80 tbgs (EOT @11,031') Rev circulated 48 bbls 10# BW. WOC. TIH 16 jnts 2-3/8 L80 tbgs and TTOC @ 11470'. TOH std back 10 jnts 2-3/8 L80 tbgs. EOT @ 11349'.

1/5/25: TIH 10 jnts 2-3/8 L80 tbgs. EOT @ 11,466'. Broke circ w/10 bbls. Spot 66 sks Class H CMT (FW Mix 6.75 bbls, Slurry Vol 12.45, FOF 268', CTOC 11,202') Displaced w/43.25 bbls 10# BW. TOH std back 14 jnts 2-3/8 L80 tbgs and LD 26 jnts 2-3/8 L80 tbgs. EOT @9759'. Rev Out 60 bbls 10# BW. WOC. TIH 9 jnts 2-3/8 L80 tbgs and TTOC @11,212'. Total jnts to tag 352 jnts plus 22' of jnt 353. TOH std back 2 jnts 2-3/8 L80 tbgs. LD 92 jnts 2-3/8 L80 tbgs. EOT @ 8321'.

1/7/25: Spot 140 sks Class H CMT (FW Mix 14.5 bbls, Slurry Vol 26.43 bbls, FOF 575', CTOC 7,725') Displaced w/29.75 bbls 10# BW. TOH std back 32 jnts 2-3/8 L80 tbgs. LD 8 jnts 2-3/8 L80 tbgs. Rev circ 39 bbls 10# BW. EOT @ 7,025'. WOC. TIH 22 jnts 2-3/8 L80 tbgs and TTOC @7750'. TOH std back 94 jnts 2-3/8 L80 tbgs.

1/8/25: TOH LD 73 jnts 2-3/8 L80 tbgs. MIRU WLU. RIH to 6,300'. Could not perf there due to collar. Moved up 10' and perfed @6290'. Had 450 psi on csg. Intermediate went on vacuum. Psi on csg lost psi slowly. POOH. RDMO WLU. Attempt to EIR. Unsuccessful. Pumped 15 bbls and got 1000 psi immediately. MIRU WLU. RIH and perf @6300' w/450 psi on csg. Lost psi when we perfed. EIR. 20 bbls @ 2bpm 800 psi. Got good circulation to pit. POOH. RDMO WLU.

1/10/25: Attempted to TIH w/pkr.

1/11/25: TIH 4 jnts 2-3/8 L80 tbgs and test set pkr. Unset pkr and TIH total of 164 jnts 2-3/8 L80 tbgs and set pkr @5243'. Set pkr, pulled 35 pts over. Loaded up csg above pkr. Pumped down tbgs communicated with csg above pkr. Attempted to test above pkr (pumped down csg). Pkr did not hold psi. (put 700 psi and lost it immediately). Pulled 40 pts over and attempted test again w/no success. TOH 20 jnts and set pkr @4602'. Was unable to get a test. Pumped down csg brought up psi to 700 and lost it immediately. TOH 20 jnts and set pkr @3963'. Attempted to test again. No success. Pumped down csg above pkr, put 700 psi and lost immediately. TOH 90 jnts and set pkr @1096'. Attempted to test above pkr. Pumped down csg to 700 psi. PSI held for 5 minutes without losing. TIH 165 jnts and set pkr @6352'. 199 jnts total in hole. Attempted to PT below pkr. Could not get good PT. Unset pkr and secured well.

1/12/25: TOH LD 11 jnts 2-3/8 tbgs and std back 50 jnts 2-3/8 L80 tbgs. Set pkr @4411'. Tested pkr and it did not hold psi. TOH std back 44 jnts and set pkr @3007'. TOH std back 32 jnts set pkr @1984. TOH 14 jnts set pkr @1984'. TOH 14 jnts set pkr @1540. Tested good. TIH 116 jnts 2-3/8 L80 tbgs (164 total) set pkr @5243'. Loaded csg. Pumped down tbgs. Got bbl in bbl out at pit. 1000 psi. Test good. Sqz 444 sks Class C CMT. (FW mix 66.75 bbls, Slurry vol 104.38 bbls, CTOC 5575'). Displaced w/37 bbls 10# BW. Got up to 1000 psi on tbgs while on CMT. Broke back to 400 psi then 0 psi while on displacement.

1/13/25: RU WLU. RIH TTOC @5596'. POOH. RD WLU. TOH LD 44 jnts 2-3/8 L80 tbgs. EOT @3840'. 120 jnts in the hole. MIRU WLU. RIH perf @4,150'. Put 500 psi on csg. Lost psi slowly, didn't blow glove off of intermediate until csg was @ 0. POOH. RDMO WLU. TOH LD 22 jnts 2-3/8 L80 tbgs. EOT @3138'. Total in hole 98 jnts. Set pkr

and tested to ensure pkr was set correctly. Sqz 392 sks Class C CMT (FW mix 58.65 bbls, Slurry Vol 91.92 bbls, CTOC 3500') Displaced w/29.5 bbls 0 psi on tbg.

1/14/25: RU WLU. RIH TTOC @3504'. POOH. RD WLU. RU WLU. RIH and perf @3480'. Put 500 psi on csg. Lost pressure slowly on csg but it blew glove out of the 13-3/8. POOH. RD WLU. Pumped 20 bbls down tbg @2.5 bpm, 800 psi. Got returns after 3 bbls gone. TOH LD 47 jnts 2-3/8 L80 tbg. EOT @1639'. Set pkr and test.

1/15/25: Sqz 903 sks Class C CMT (FW Mix 136 bbls, Slurry Vol 213 bbls, FOF 1500', CTOC 1980') Displaced w/23 bbls 10# BW. WOC. TOH 51 jnts 2-3/8 L80 tbg. LD pkr and released. TIH 62 jnts 2-3/8 L80 tbg and 15' of jnt 63. TTOC @ 1987. Witnessed by Javier Esparza w/BLM. TOH LD 63 jnts 2-3/8 L80 tbg. TIH, TOH LD 12 jnts 2-3/8 L80 tbg.

1/16/25: MIRU WLU. RIH TTOC @1989'. Pull and perf @1967'. Had 500 psi on the csg. Lost psi when we perfed and blew the glove off. POOH. RDMO WLU. Circ 10 bbls 10# BW. Shut in 13-3/8 and put 300 psi on it. Monitored for 25 minutes. PSI held steady RD workfloor. ND BOP. NU B1 Flange. Sqz CMT to surf. Sqz CMT to good returns out the 13-3/8 1195 sks Class C CMT. 183 bbls FW Mix. 281 Slurry Vol. RD PU.

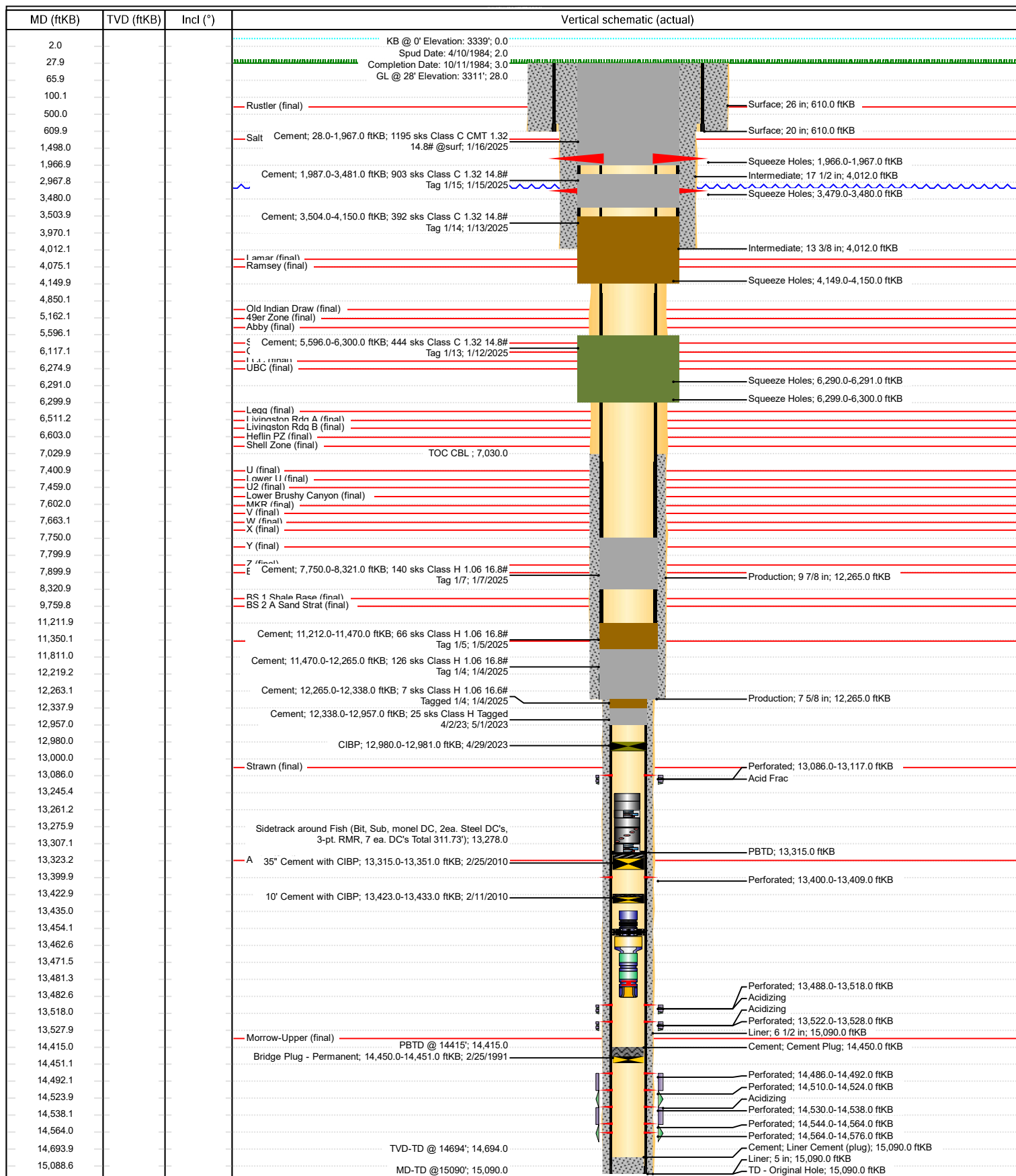
3/6/25: WH cutoff and DHM set.



Schematic - Vertical with Perfs

Well Name: James Ranch Unit 015

API/UWI 3001524780	SAP Cost Center ID 1136303001	Permit Number	State/Province New Mexico	County Eddy
Surface Location T23S-R31E-S07	Spud Date 4/10/1984 11:30	Original KB Elevation (ft) 3,339.00	Ground Elevation (ft) 3,311.00	KB-Ground Distance (ft) 28.00



Sante Fe Main Office
Phone: (505) 476-3441

General Information
Phone: (505) 629-6116

Online Phone Directory
<https://www.emnrd.nm.gov/oed/contact-us>

State of New Mexico
Energy, Minerals and Natural Resources
Oil Conservation Division
1220 S. St Francis Dr.
Santa Fe, NM 87505

CONDITIONS

Action 443871

CONDITIONS

Operator: XTO PERMIAN OPERATING LLC. 6401 HOLIDAY HILL ROAD MIDLAND, TX 79707	OGRID: 373075
	Action Number: 443871
	Action Type: [C-103] Sub. Plugging (C-103P)

CONDITIONS

Created By	Condition	Condition Date
gcordero	None	3/28/2025