

Well Name: SCHWERTDFEGER A	Well Location: T27N / R8W / SEC 6 / NWNW / 36.60878 / -107.72757	County or Parish/State: SAN JUAN / NM
Well Number: 3M	Type of Well: CONVENTIONAL GAS WELL	Allottee or Tribe Name:
Lease Number: NMSF079319	Unit or CA Name:	Unit or CA Number:
US Well Number: 3004511605	Operator: HILCORP ENERGY COMPANY	

Subsequent Report

Sundry ID: 2815871

Type of Submission: Subsequent Report	Type of Action: Workover Operations
Date Sundry Submitted: 10/08/2024	Time Sundry Submitted: 09:11
Date Operation Actually Began: 09/25/2024	

Actual Procedure: Hilcorp Energy repaired the bradenhead in the subject well according to the attached reports.

SR Attachments

Actual Procedure

Schwerdtfeger\_A\_\_3M\_SR\_filed\_20241008091049.pdf

Well Number: 3M

Type of Well: CONVENTIONAL GAS WELL

Allottee or Tribe Name:

Lease Number: NMSF079319

Unit or CA Name:

Unit or CA Number:

US Well Number: 3004511605

Operator: HILCORP ENERGY COMPANY

Operator

I certify that the foregoing is true and correct. Title 18 U.S.C. Section 1001 and Title 43 U.S.C. Section 1212, make it a crime for any person knowingly and willfully to make to any department or agency of the United States any false, fictitious or fraudulent statements or representations as to any matter within its jurisdiction. Electronic submission of Sundry Notices through this system satisfies regulations requiring a

Operator Electronic Signature: TAMMY JONES

Signed on: OCT 08, 2024 09:11 AM

Name: HILCORP ENERGY COMPANY

Title: Regulatory Compliance Specialist

Street Address: 382 ROAD 3100

City: AZTEC

State: NM

Phone: (505) 324-5185

Email address: TAJONES@HILCORP.COM

Field

Representative Name:

Street Address:

City:

State:

Zip:

Phone:

Email address:

BLM Point of Contact

BLM POC Name: KENNETH G RENNICK

BLM POC Title: Petroleum Engineer

BLM POC Phone: 5055647742

BLM POC Email Address: krennick@blm.gov

Disposition: Accepted

Disposition Date: 10/09/2024

Signature: Kenneth Rennick

**SCHWERDTFEGER A 3M****30.045.11605****BRADENHEAD REPAIR**

**9/25/2024** – MIRU. CK PRESSURES. SICP 180 PSI, SITP 180 PSI, SIBH 180 PSI. BLOW WELL DOWN 15 MINS. ND WH. NU BP. FUNCTION TEST BOP. PULL TBG HANGER. TIH AND TAG FOR FILL AT 6667' (45' OF FILL). L/D TAG JTS. SISW. SDFN.

**9/26/2024** – CK PRESSURES. SICP 140 PSI, SITP 140 PSI, SIBH 140 PSI. BLOW WELL DOWN 10 MINS. PULLED OUT 1 JT AND RUN IN PKR, SET IT 30' BELOW WH, LOAD CSG AND TEST TO 600 PSI, DIDN'T HOLD, WAS COMMUNICATING W/BH, RELEASE PKR AND PULLED IT OUT. (TALK TO HOUSTON AND DECIDED TO CHANGE OUT WH), MIRU PREMIER SCANNER, TOOH SCANNING TBG. TIH W/RBP AND 22 STS TO 1396', SET RBP. PULL OUT 1 ST, LOAD UP CSG W/24 BBL, TOH W/21 STS. ND BOP. REMOVED OLD 3K WH. TOP SEAL WAS BAD. DIDN'T HAVE NEW SEALS TO REPLACE IT, DECIDED TO INSTALL A NEW 5K WH. PT VOID TO 2800 PSI FOR 10 MIN- HELD GOOD. NU BOP. PT CSG TO 500 PSI AND DIDN'T HOLD, STILL COMMUNICATED W/BH, MUST BE A HOLE JUST ABOUT 10' BELOW WH. SISW. SDFN.

**9/27/2024** – CK PRESSURES. SICP 0 PSI, SITP 0 PSI, SIBH 0 PSI. BWDN 0 MINS. P/U 4-1/2" PACKER. SET PACKER AT 23'. PT CSG FROM 23' TO 1396' WITH 520 PSI FOR 30 MINUTES (GOOD). RELEASED PACKER. L/D PACKER. R/D FLOOR. N/D BOP. N/D TBG HEAD. TIE BACK BLOCKS TO SINGLE LINE. P/U CSG SPEAR. ENGAGE CSG. ATTEMPT TO RELEASE CSG SLIPS. UNABLE TO RELEASE SLIPS. DECISION MADE TO CMT SQUEEZE HOLE IN CSG. WAIT ON REGULATORY APPROVALS. N/U TBG HEAD. N/H MASTER VALVE. EST INJ RT DOWN CSG OUT BH WITH 1/2 BPM AT 500 PSI. TIE BACK BLOCKS TO DOUBLE LINE. SISW. SDFN.

**9/28/2024** – CK PRESSURES. SICP 0 PSI, SITP 0 PSI, SIBH 0 PSI. BWDN 0 MINS. MIRU HEC CEMENT PACKAGE. ESTABLISH INJECTION RATE .5 BBL/MIN @500 PSI (5 BBLS). CIRCULATE CEMENT TO SURFACE W/ 10 SX CLASS G, 1.15 YIELD 15.8 PPG (BOC @ ~23' TOC @ SURFACE). ND WELLHEAD. WASH OUT WELLHEAD. N/U WELLHEAD. LEAVE 500 PSI ON CASING. SISW. SDFN.

**9/30/2024** – CK PRESSURES. SICP 0 PSI, SITP 0 PSI, SIBH 0 PSI. BWDN 0 MINS. ND WH, NU BOP. RU RIG FLOOR & TBG EQUIPMENT. CEMENT WAS NOT @ SURFACE. PUP TO 165'. NO TOC. EST CIRC WITH 5 BBLS OF FRESH. PUMP 15 TOTAL. TOOH. RU WILSON PSI TEST. WAIT ON NMOCD REP. **BH TEST & MIT TEST TO 550# PSI FOR 30 MIN. MIT TEST PASSED - WITNESSED BY THOMAS VERMERSCH NMOCD.** RD WILSON. TIH WITH FISHING TO RELEASE RBP. TAG RBP @ 1375'. EST CIRC WITH 3 BBLS OF FRESH. CLEAN OUT SAND ON TOP OF RBP. UNABLE TO RELEASE RBP. PU TBG SWIVEL. WORK RBP. UNABLE TO RELEASE RBP. EST CIRC WITH 3 BBLS OF FRESH. CIRC WELL CLEAN FOR 20 MINS. RU POWER SWIVEL. USE AIR PKG TO CIRC. RELEASE RBP. TOOH. LD RBP, SIW. SDFN.

**10/1/2024** – CK PRESSURES. SICP 180 PSI, SITP 0 PSI, SIBH 0 PSI. BWDN 5 MINS. TIH WITH 3 7/8" MIL. TAG TOP OF FILL @ 6659'. RU TBG SWIVEL. EST CIRC WITH AIR PKG. CLEAN OUT FILL TO 6691'. CIRC WELL FOR 1 HR TIL CLEAN. PUMP SWEEP. CIRC SWEEP TO SURFACE. RD TBG SWIVEL. LD 2 JTS. TOOH LD JUNK MILL. KILL WELL WITH 20 BBLS OF FRESH. TIH WITH EXP CK. DRIFT TBG. **LAND 209 JTS 2-3/8" 4.7# J-55 TBG @ 6600'.** RD RIG FLOOR & TBG EQUIPMENT. ND BOP. NU WH. SIW. SDFN.

**10/2/2024** – CK PRESSURES. SICP 190 PSI, SITP 0 PSI, SIBH 0 PSI. BWDN 5 MINS. DROP EXP CK BALL. PSI TEST TO 500# - 15 MIN. TEST OK. PUMP 5 BBLS OF FRESH. POP EXP CK. RD. RIG RELEASED.

**Tammy Jones**

---

**From:** Kuehling, Monica, EMNRD <monica.kuehling@emnrd.nm.gov>  
**Sent:** Friday, September 27, 2024 1:56 PM  
**To:** Rennick, Kenneth G; Trey Misuraca; Kade, Matthew H  
**Cc:** Tammy Jones; Austin Harrison; Lisa Helper; Jackson Lancaster; Hayden Moser; Mike Murphy; Burl Applegate; William Shuss; Farmington Regulatory Techs; Jose Morales  
**Subject:** RE: [EXTERNAL] SCHWERDTFEGER A 3M (API #3004511605) BH Repair Path Forward

**CAUTION:** External sender. DO NOT open links or attachments from UNKNOWN senders.

NMOCD approves changes below

Thank you

Monica Kuehling  
Compliance Officer Supervisor  
Deputy Oil and Gas Inspector  
New Mexico Oil Conservation Division  
North District  
Cell Phone: 505-320-0243  
Email - monica.kuehling@emnrd.nm.gov

---

**From:** Rennick, Kenneth G <krennick@blm.gov>  
**Sent:** Friday, September 27, 2024 1:54 PM  
**To:** Trey Misuraca <Trey.Misuraca@hilcorp.com>; Kuehling, Monica, EMNRD <monica.kuehling@emnrd.nm.gov>; Kade, Matthew H <mkade@blm.gov>  
**Cc:** Tammy Jones <tajones@hilcorp.com>; Austin Harrison <aharrison@hilcorp.com>; Lisa Helper <lhelper@hilcorp.com>; Jackson Lancaster <Jackson.Lancaster@hilcorp.com>; Hayden Moser <Hayden.Moser@hilcorp.com>; Mike Murphy <mmurphy@hilcorp.com>; Burl Applegate <bapplegate@hilcorp.com>; William Shuss <wshuss@hilcorp.com>; Farmington Regulatory Techs <FarmingtonRegulatoryTechs@hilcorp.com>; Jose Morales <jomorales@hilcorp.com>  
**Subject:** Re: [EXTERNAL] SCHWERDTFEGER A 3M (API #3004511605) BH Repair Path Forward

The BLM finds the procedure appropriate.

Kenneth (Kenny) Rennick

Petroleum Engineer

Bureau of Land Management  
Farmington Field Office  
6251 College Blvd  
Farmington, NM 87402

Email: [krennick@blm.gov](mailto:krennick@blm.gov)

Mobile &amp; Text: 505.497.0019

---

**From:** Trey Misuraca <[Trey.Misuraca@hilcorp.com](mailto:Trey.Misuraca@hilcorp.com)>**Sent:** Friday, September 27, 2024 1:18 PM**To:** Kuehling, Monica, EMNRD <[monica.kuehling@emnrd.nm.gov](mailto:monica.kuehling@emnrd.nm.gov)>; Rennick, Kenneth G <[krennick@blm.gov](mailto:krennick@blm.gov)>; Kade, Matthew H <[mkade@blm.gov](mailto:mkade@blm.gov)>**Cc:** Tammy Jones <[tajones@hilcorp.com](mailto:tajones@hilcorp.com)>; Austin Harrison <[aharrison@hilcorp.com](mailto:aharrison@hilcorp.com)>; Lisa Helper <[lhelper@hilcorp.com](mailto:lhelper@hilcorp.com)>; Jackson Lancaster <[Jackson.Lancaster@hilcorp.com](mailto:Jackson.Lancaster@hilcorp.com)>; Hayden Moser <[Hayden.Moser@hilcorp.com](mailto:Hayden.Moser@hilcorp.com)>; Mike Murphy <[mmurphy@hilcorp.com](mailto:mmurphy@hilcorp.com)>; Burl Applegate <[bapplegate@hilcorp.com](mailto:bapplegate@hilcorp.com)>; William Shuss <[wshuss@hilcorp.com](mailto:wshuss@hilcorp.com)>; Farmington Regulatory Techs <[FarmingtonRegulatoryTechs@hilcorp.com](mailto:FarmingtonRegulatoryTechs@hilcorp.com)>; Jose Morales <[jomorales@hilcorp.com](mailto:jomorales@hilcorp.com)>**Subject:** RE: [EXTERNAL] SCHWERDTFEGER A 3M (API #3004511605) BH Repair Path Forward

Yes, slight change of plans, all.

We had found that there had been a topside squeeze on the well performed in 1966 that has cement down to ~210ft. We are unable to pull the 4.5" casing on the well. We have an injection test at ½ bbl/min at 500psi and are able to circulate up the bradenhead at 10ft in the well. The next steps are as follows:

- Tomorrow we will pump a cement squeeze from 10ft to surface to squeeze the hole in casing. We will let this cement set up until Monday.
- Monday, we will drill out the cement and confirm no bradenhead pressure.
- If bradenhead pressure has been removed, we will have a witnessed MIT to 500psi on the well.
- After, we will retrieve the RBP, run production tubing, and put the well back to production.

Please let me know if you have any questions and if this proposal is appropriate.

Kind Regards,

**Trey Misuraca**

Operations Engineer | San Juan North

Hilcorp Energy Company | 1111 Travis Street | Houston, TX 77002

M: 225.610.7136

[Trey.Misuraca@hilcorp.com](mailto:Trey.Misuraca@hilcorp.com)

---

**From:** Kuehling, Monica, EMNRD <[monica.kuehling@emnrd.nm.gov](mailto:monica.kuehling@emnrd.nm.gov)>**Sent:** Friday, September 27, 2024 2:12 PM**To:** Rennick, Kenneth G <[krennick@blm.gov](mailto:krennick@blm.gov)>; Trey Misuraca <[Trey.Misuraca@hilcorp.com](mailto:Trey.Misuraca@hilcorp.com)>; Kade, Matthew H <[mkade@blm.gov](mailto:mkade@blm.gov)>**Cc:** Tammy Jones <[tajones@hilcorp.com](mailto:tajones@hilcorp.com)>; Austin Harrison <[aharrison@hilcorp.com](mailto:aharrison@hilcorp.com)>; Lisa Helper <[lhelper@hilcorp.com](mailto:lhelper@hilcorp.com)>; Jackson Lancaster <[Jackson.Lancaster@hilcorp.com](mailto:Jackson.Lancaster@hilcorp.com)>; Hayden Moser <[Hayden.Moser@hilcorp.com](mailto:Hayden.Moser@hilcorp.com)>; Mike Murphy <[mmurphy@hilcorp.com](mailto:mmurphy@hilcorp.com)>; Burl Applegate <[bapplegate@hilcorp.com](mailto:bapplegate@hilcorp.com)>; William Shuss <[wshuss@hilcorp.com](mailto:wshuss@hilcorp.com)>; Farmington Regulatory Techs <[FarmingtonRegulatoryTechs@hilcorp.com](mailto:FarmingtonRegulatoryTechs@hilcorp.com)>; Jose Morales <[jomorales@hilcorp.com](mailto:jomorales@hilcorp.com)>**Subject:** RE: [EXTERNAL] SCHWERDTFEGER A 3M (API #3004511605) BH Repair Path Forward

**CAUTION:** External sender. DO NOT open links or attachments from UNKNOWN senders.

Kenny they have a change of plans – Trey please send update for Kenny and I – BLM needs to approve the change as well

Thank you

Monica Kuehling

Compliance Officer Supervisor  
Deputy Oil and Gas Inspector  
New Mexico Oil Conservation Division  
North District  
Cell Phone: 505-320-0243  
Email - [monica.kuehling@emnrd.nm.gov](mailto:monica.kuehling@emnrd.nm.gov)

---

**From:** Rennick, Kenneth G <[krennick@blm.gov](mailto:krennick@blm.gov)>  
**Sent:** Friday, September 27, 2024 9:50 AM  
**To:** Trey Misuraca <[Trey.Misuraca@hilcorp.com](mailto:Trey.Misuraca@hilcorp.com)>; Kuehling, Monica, EMNRD <[monica.kuehling@emnrd.nm.gov](mailto:monica.kuehling@emnrd.nm.gov)>; Kade, Matthew H <[mkade@blm.gov](mailto:mkade@blm.gov)>  
**Cc:** Tammy Jones <[tajones@hilcorp.com](mailto:tajones@hilcorp.com)>; Austin Harrison <[aharrison@hilcorp.com](mailto:aharrison@hilcorp.com)>; Lisa Helper <[lhelper@hilcorp.com](mailto:lhelper@hilcorp.com)>; Jackson Lancaster <[Jackson.Lancaster@hilcorp.com](mailto:Jackson.Lancaster@hilcorp.com)>; Hayden Moser <[Hayden.Moser@hilcorp.com](mailto:Hayden.Moser@hilcorp.com)>; Mike Murphy <[mmurphy@hilcorp.com](mailto:mmurphy@hilcorp.com)>; Burl Applegate <[bapplegate@hilcorp.com](mailto:bapplegate@hilcorp.com)>; William Shuss <[wshuss@hilcorp.com](mailto:wshuss@hilcorp.com)>; Farmington Regulatory Techs <[FarmingtonRegulatoryTechs@hilcorp.com](mailto:FarmingtonRegulatoryTechs@hilcorp.com)>; Jose Morales <[jomorales@hilcorp.com](mailto:jomorales@hilcorp.com)>  
**Subject:** Re: [EXTERNAL] SCHWERDTFEGER A 3M (API #3004511605) BH Repair Path Forward

Th BLM finds the procedure appropriate.

Kenneth (Kenny) Rennick

Petroleum Engineer

Bureau of Land Management  
Farmington Field Office  
6251 College Blvd  
Farmington, NM 87402

Email: [krennick@blm.gov](mailto:krennick@blm.gov)  
Mobile & Text: 505.497.0019

---

**From:** Trey Misuraca <[Trey.Misuraca@hilcorp.com](mailto:Trey.Misuraca@hilcorp.com)>  
**Sent:** Friday, September 27, 2024 9:40 AM  
**To:** [Monica.Kuehling@emnrd.nm.gov](mailto:Monica.Kuehling@emnrd.nm.gov) <[Monica.Kuehling@emnrd.nm.gov](mailto:Monica.Kuehling@emnrd.nm.gov)>; Kade, Matthew H <[mkade@blm.gov](mailto:mkade@blm.gov)>; Rennick, Kenneth G <[krennick@blm.gov](mailto:krennick@blm.gov)>  
**Cc:** Tammy Jones <[tajones@hilcorp.com](mailto:tajones@hilcorp.com)>; Austin Harrison <[aharrison@hilcorp.com](mailto:aharrison@hilcorp.com)>; Lisa Helper <[lhelper@hilcorp.com](mailto:lhelper@hilcorp.com)>; Jackson Lancaster <[Jackson.Lancaster@hilcorp.com](mailto:Jackson.Lancaster@hilcorp.com)>; Hayden Moser <[Hayden.Moser@hilcorp.com](mailto:Hayden.Moser@hilcorp.com)>; Mike Murphy <[mmurphy@hilcorp.com](mailto:mmurphy@hilcorp.com)>; Burl Applegate <[bapplegate@hilcorp.com](mailto:bapplegate@hilcorp.com)>; William Shuss <[wshuss@hilcorp.com](mailto:wshuss@hilcorp.com)>; Farmington Regulatory Techs <[FarmingtonRegulatoryTechs@hilcorp.com](mailto:FarmingtonRegulatoryTechs@hilcorp.com)>; Jose Morales <[jomorales@hilcorp.com](mailto:jomorales@hilcorp.com)>  
**Subject:** [EXTERNAL] SCHWERDTFEGER A 3M (API #3004511605) BH Repair Path Forward

**This email has been received from outside of DOI - Use caution before clicking on links, opening attachments, or responding.**

Monica, Kenny, Matthew,

I wanted to send an email regarding current finding and proposed path forward on the Bradenhead Directive on the Schwerdtfeger A 3M (API: 3004511605). We initially had thought we had a wellhead issue on this well and set an RBP at 1,396' to change out the wellhead. After changing out and testing the wellhead, we attempted to pressure test the casing, and had still found the casing to be communicating with the Bradenhead. We ran in hole and isolated a hole in the first joint of casing from surface between 10' and 30'.

Our proposed path forward to repair the bradenhead pressure would be as follows:

- Rig up wireline and back off the damaged joint of casing, spear in and remove the joint of casing.
- Run in hole with a new joint of casing and screw in.
- Confirm with pressure test that this has removed all bradenhead pressure from the well.

Assuming this works and bradenhead pressure is no longer present on the well, we would perform a witnessed bradenhead test and MIT on the well to 500psi from the RBP to surface to satisfy the requirements for the bradenhead directive, remove the RBP, run production tubing, and return the well to production.

Please let me know if the NMOCD and BLM approves moving forward with this plan.

Kind Regards,

**Trey Misuraca**

Operations Engineer | San Juan North

Hilcorp Energy Company | 1111 Travis Street | Houston, TX 77002

M: 225.610.7136

[Trey.Misuraca@hilcorp.com](mailto:Trey.Misuraca@hilcorp.com)



HIGGINS ENERGY  
 SCHWABERDT FEGHER A # 003 M  
 API # 450-045-11605  
 9-30-2024 Wilson Seismic Co  
 55 Bonnie Morrison

CHART POOL USA INC.  
 PORTAGE, INDIANA

METER \_\_\_\_\_

CHART PUT ON \_\_\_\_\_

TAKEN OFF \_\_\_\_\_

LOCATION \_\_\_\_\_

REMARKS 11

CHART NO. MP-1000-IHR  
 (TO FIT)

60 MM.

Bridgman Plot  
 1000' 4 1/2 CSQ

do not  
 draw  
 in  
 this  
 area





# NEW MEXICO ENERGY, MINERALS and NATURAL RESOURCES DEPARTMENT

## MECHANICAL INTEGRITY TEST REPORT

(TA OR UIC)

Date of Test 9-30-24 Operator Hilcorp Energy API # 30-0 45-11605

Property Name Schwerdtfeger A Well # 3M Location: Unit D Sec 6 Twn 21N Rge 2W

Land Type:

State \_\_\_\_\_  
Federal X \_\_\_\_\_  
Private \_\_\_\_\_  
Indian \_\_\_\_\_

Well Type:

Water Injection \_\_\_\_\_  
Salt Water Disposal \_\_\_\_\_  
Gas Injection \_\_\_\_\_  
Producing Oil/Gas X \_\_\_\_\_  
Pressure observation \_\_\_\_\_

Temporarily Abandoned Well (X/N): Post workover TA Expires: \_\_\_\_\_

Casing Pres. Ø \_\_\_\_\_  
Bradenhead Pres. Ø \_\_\_\_\_  
Tubing Pres. ✓ \_\_\_\_\_  
Int. Casing Pres. ✓ \_\_\_\_\_

Tbg. SI Pres. ✓ \_\_\_\_\_  
Tbg. Inj. Pres. ✓ \_\_\_\_\_

Max. Inj. Pres. ✓ \_\_\_\_\_

Pressured annulus up to 565-555 psi. for 30 mins. Test passed/failed

### REMARKS:

Pressured up to 565psi - Drop to 560psi at 4min - 560psi 10min - 555psi 15min - 555psi for the remainder of test

PKR 1300' 4-1/2

By Cecilia Sanchez  
(Operator Representative)

Witness [Signature]  
(NMOCD)

(Position)

Revised 02-11-02

## BRADENHEAD TEST REPORT

(submit 1 copy to above address)

Date of Test 9-30-24 Operator Hilcorp Energy API #30-045-11605

Property Name Schwerdtfeger A Well No. 3M Location: Unit D Section 6 Township 27N Range 8W

Well Status (~~Shut-In~~ or Producing) Initial PSI: Tubing NA Intermediate NA Casing Ø Bradenhead Ø

OPEN BRADENHEAD AND INTERMEDIATE TO ATMOSPHERE INDIVIDUALLY FOR 15 MINUTES EACH

Testing TIME	PRESSURE			INTERM	
	BH	Bradenhead Int	Csg	Int	Csg
5 min	Ø	NA	Ø		
10 min	Ø		Ø		
15 min	Ø		Ø		
20 min					
25 min					
30 min					

FLOW CHARACTERISTICS  
BRADENHEAD INTERMEDIATE

Steady Flow \_\_\_\_\_

Surges \_\_\_\_\_

Down to Nothing \_\_\_\_\_

Nothing X \_\_\_\_\_

Gas \_\_\_\_\_

Gas & Water \_\_\_\_\_

Water \_\_\_\_\_

If bradenhead flowed water, check all of the descriptions that apply below:

CLEAR \_\_\_\_\_ FRESH \_\_\_\_\_ SALTY \_\_\_\_\_ SULFUR \_\_\_\_\_ BLACK \_\_\_\_\_

 5 MINUTE SHUT-IN PRESSURE BRADENHEAD Opsi INTERMEDIATE NA

## REMARKS:

Nothing on Bh when opened - nothing on Bh after 5 min shut in -
By Oscar Sanchez

(Position)

Witness J. K. NMOC

E-mail address \_\_\_\_\_

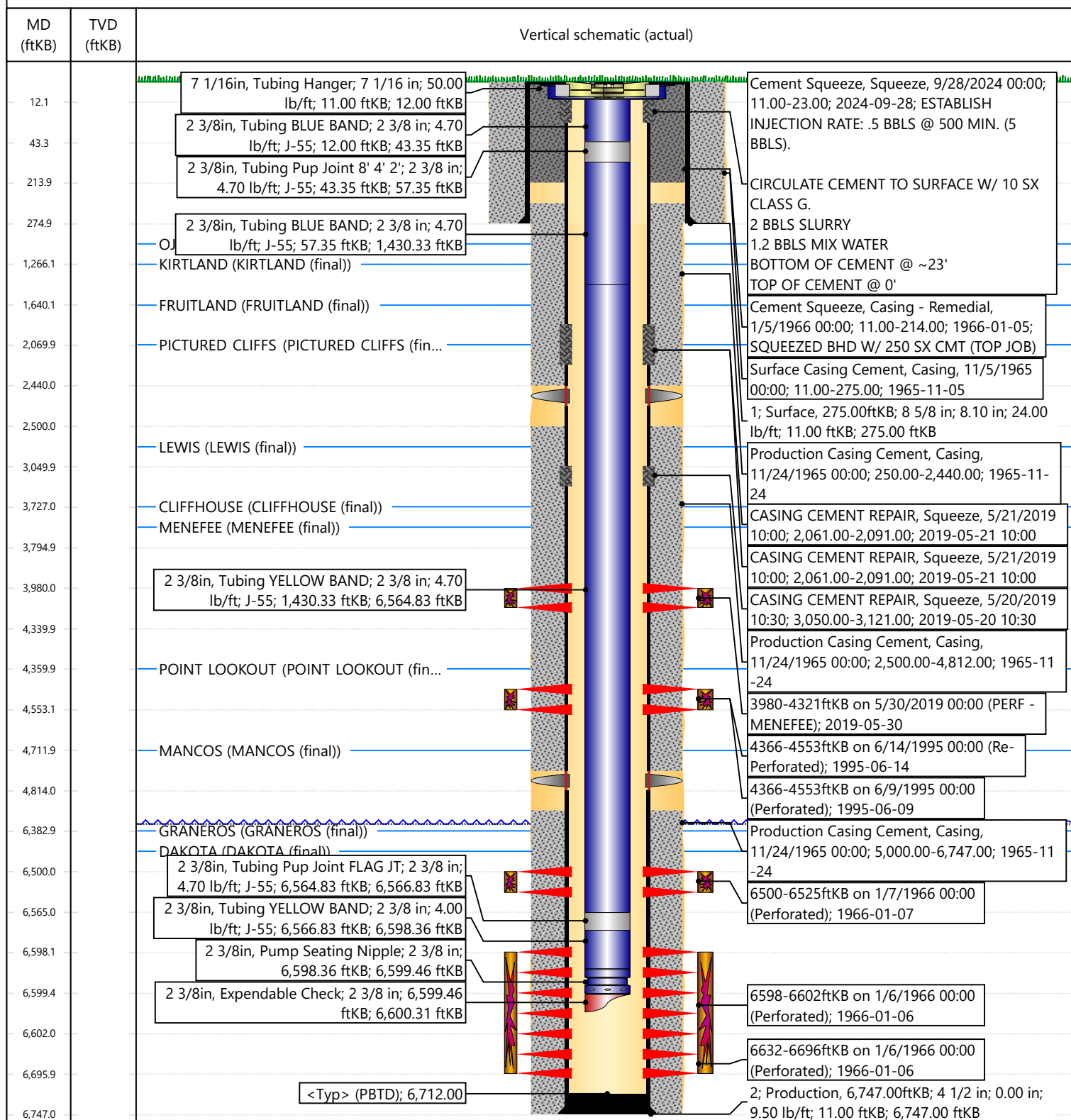


## Current Schematic - Version 3

Well Name: SCHWERTFEGER A #3M

API / UWI 3004511605	Surface Legal Location T27N-R08W-S06	Field Name Blanco Mesaverde	Route 0803	State/Province New Mexico	Well Configuration Type Vertical
Ground Elevation (ft) 5,902.00	Original KB/RT Elevation (ft) 5,913.00	Tubing Hanger Elevation (ft)	RKB to GL (ft) 11.00	KB-Casing Flange Distance (ft)	KB-Tubing Hanger Distance (ft)
<b>Tubing Strings</b>					
Run Date 10/1/2024 17:00	Set Depth (ftKB) 6,600.31	String Max Nominal OD (in) 2 3/8	String Min Nominal ID (in) 2.00	Weight/Length (lb/ft) 4.70	Original Spud Date 11/5/1965 00:00

## Original Hole [Vertical]





Sante Fe Main Office  
Phone: (505) 476-3441

General Information  
Phone: (505) 629-6116

Online Phone Directory  
<https://www.emnrd.nm.gov/ocd/contact-us>

State of New Mexico  
Energy, Minerals and Natural Resources  
Oil Conservation Division  
1220 S. St Francis Dr.  
Santa Fe, NM 87505

CONDITIONS

Action 392031

CONDITIONS

Operator: HILCORP ENERGY COMPANY 1111 Travis Street Houston, TX 77002	OGRID: 372171
	Action Number: 392031
	Action Type: [C-103] Sub. Workover (C-103R)

CONDITIONS

Created By	Condition	Condition Date
mkuehling	approved for record	5/7/2025