

<b>Well Name:</b> POKER LAKE UNIT 18 TWR	<b>Well Location:</b> T24S / R31E / SEC 19 / NWNE /	<b>County or Parish/State:</b>
<b>Well Number:</b> 311H	<b>Type of Well:</b> OIL WELL	<b>Allottee or Tribe Name:</b>
<b>Lease Number:</b> NMNM025533	<b>Unit or CA Name:</b>	<b>Unit or CA Number:</b> NMNM71016X
<b>US Well Number:</b> 3001554273	<b>Well Status:</b> Approved Application for Permit to Drill	<b>Operator:</b> XTO ENERGY INCORPORATED

Notice of Intent

**Sundry ID:** 2755475

**Type of Submission:** Notice of Intent

**Type of Action:** APD Change

**Date Sundry Submitted:** 10/09/2023

**Time Sundry Submitted:** 10:20

**Date proposed operation will begin:** 10/09/2023

**Procedure Description:** \*\*Surface Hole Location Change, First and Last Take Point Changes, Bottom Hole Location Change, Drilling Plan Change, Directional Plan Change, Casing/Cement Change. XTO Energy Inc. requests permission to make the following changes to the original APD: SHL: fr/265'FNL & 1746'FEL to 265'FNL & 1711'FEL, Section 19-T24S-R31E NMNM025533 FTP: fr/100'FNL & 2200'FEL to 100'FNL & 1145'FEL, NMNM025533 LTP: fr/100'FSL & 2200'FEL to 100'FSL & 1145'FEL, NMNM000506 BHL: fr/50'FSL & 2200'FEL to 50'FSL & 1145'FEL, Section 30-T24S-R31E NMNM000506 Casing/Cement design: weight fr/23 to 20. Attachments: C102 Drilling Program Directional Plan MBS

NOI Attachments

**Procedure Description**

PLU\_18\_Twin\_Wells\_Ranch\_311H\_Sundry\_Attachment\_20231009102023.pdf

<b>Well Name:</b> POKER LAKE UNIT 18 TWR	<b>Well Location:</b> T24S / R31E / SEC 19 / NWNE /	<b>County or Parish/State:</b>
<b>Well Number:</b> 311H	<b>Type of Well:</b> OIL WELL	<b>Allottee or Tribe Name:</b>
<b>Lease Number:</b> NMNM025533	<b>Unit or CA Name:</b>	<b>Unit or CA Number:</b> NMNM71016X
<b>US Well Number:</b> 3001554273	<b>Well Status:</b> Approved Application for Permit to Drill	<b>Operator:</b> XTO ENERGY INCORPORATED

Conditions of Approval

Additional

Sec\_19\_24S\_31E\_NMP\_Sundry\_2755475\_Poker\_Lake\_Unit\_18\_TWR\_311H\_COAs\_20231025150844.pdf

Operator

I certify that the foregoing is true and correct. Title 18 U.S.C. Section 1001 and Title 43 U.S.C. Section 1212, make it a crime for any person knowingly and willfully to make to any department or agency of the United States any false, fictitious or fraudulent statements or representations as to any matter within its jurisdiction. Electronic submission of Sundry Notices through this system satisfies regulations requiring a

<b>Operator Electronic Signature:</b> JEAN COOPER	<b>Signed on:</b> OCT 09, 2023 10:20 AM
<b>Name:</b> XTO ENERGY INCORPORATED	
<b>Title:</b> Regulatory Analyst	
<b>Street Address:</b> 6401 HOLIDAY HILL ROAD BLDG 5	
<b>City:</b> MIDLAND	<b>State:</b> TX
<b>Phone:</b> (432) 620-6700	
<b>Email address:</b> JEAN.COOPER@EXXONMOBIL.COM	

Field

<b>Representative Name:</b>		
<b>Street Address:</b>		
<b>City:</b>	<b>State:</b>	<b>Zip:</b>
<b>Phone:</b>		
<b>Email address:</b>		

BLM Point of Contact

<b>BLM POC Name:</b> CHRISTOPHER WALLS	<b>BLM POC Title:</b> Petroleum Engineer
<b>BLM POC Phone:</b> 5752342234	<b>BLM POC Email Address:</b> cwalls@blm.gov
<b>Disposition:</b> Approved	<b>Disposition Date:</b> 10/31/2023
<b>Signature:</b> Chris Walls	

District I  
1625 N. French Dr., Hobbs, NM 88240  
Phone: (575) 393-6161 Fax: (575) 393-0720  
District II  
811 S. First St., Artesia, NM 88210  
Phone: (575) 748-1283 Fax: (575) 748-9720  
District III  
1000 Rio Brazos Road, Aztec, NM 87410  
Phone: (505) 334-6178 Fax: (505) 334-6170  
District IV  
1220 S. St. Francis Dr., Santa Fe, NM 87505  
Phone: (505) 476-3460 Fax: (505) 476-3462

State of New Mexico  
Energy, Minerals & Natural Resources Department  
OIL CONSERVATION DIVISION  
1220 South St. Francis Dr.  
Santa Fe, NM 87505

Form C-102  
Revised August 1, 2011  
Submit one copy to appropriate  
District Office  
☐ AMENDED REPORT

WELL LOCATION AND ACREAGE DEDICATION PLAT

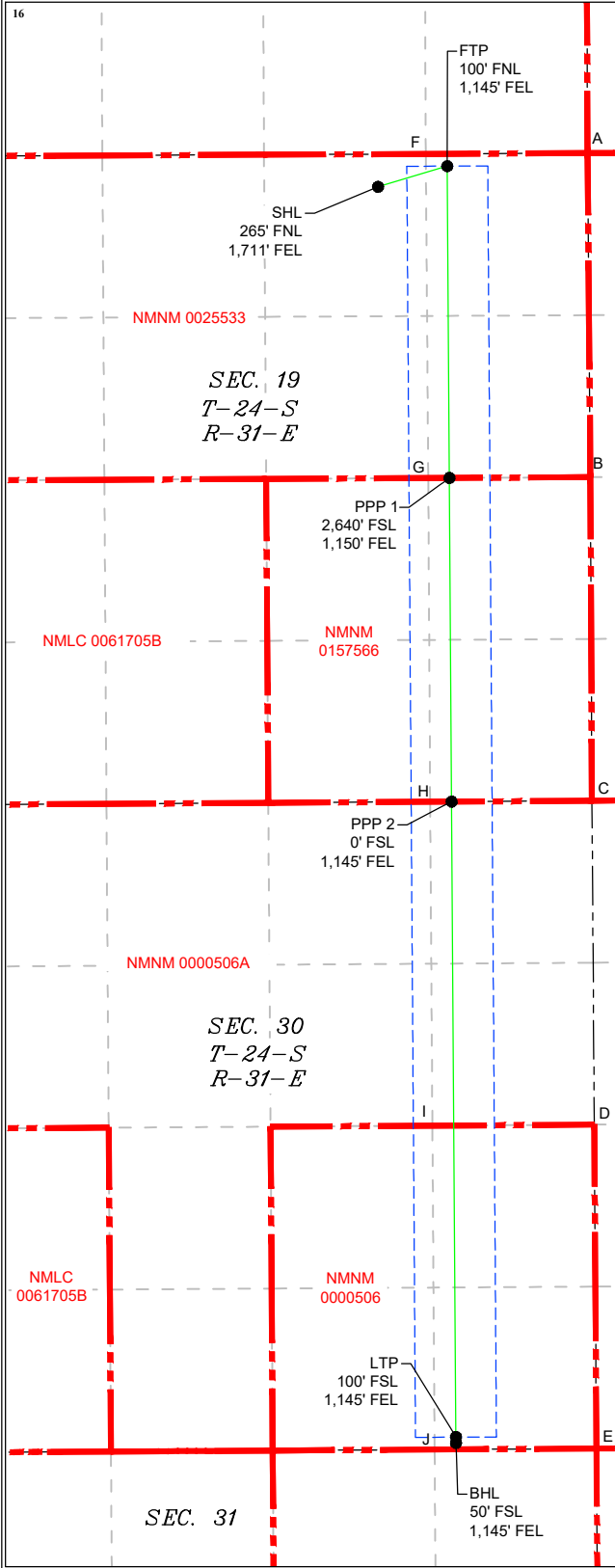
<sup>1</sup> API Number <b>30-015-</b>	<sup>2</sup> Pool Code 97975	<sup>3</sup> Pool Name WC-015 G-06 S243119C; Bone Spring
<sup>4</sup> Property Code	<sup>5</sup> Property Name <b>POKER LAKE UNIT 18 TWR</b>	<sup>6</sup> Well Number <b>311H</b>
<sup>7</sup> OGRID No. <b>373075</b>	<sup>8</sup> Operator Name <b>XTO PERMIAN OPERATING, LLC.</b>	<sup>9</sup> Elevation <b>3,500'</b>

<sup>10</sup> Surface Location									
UL or lot no. <b>B</b>	Section <b>19</b>	Township <b>24S</b>	Range <b>31E</b>	Lot Idn	Feet from the <b>265</b>	North/South line <b>NORTH</b>	Feet from the <b>1,711</b>	East/West line <b>EAST</b>	County <b>EDDY</b>

<sup>11</sup> Bottom Hole Location If Different From Surface									
UL or lot no. <b>P</b>	Section <b>30</b>	Township <b>24S</b>	Range <b>31E</b>	Lot Idn	Feet from the <b>50</b>	North/South line <b>SOUTH</b>	Feet from the <b>1,145</b>	East/West line <b>EAST</b>	County <b>EDDY</b>

<sup>12</sup> Dedicated Acres	<sup>13</sup> Joint or Infill	<sup>14</sup> Consolidation Code	<sup>15</sup> Order No.
-------------------------------	-------------------------------	----------------------------------	-------------------------

No allowable will be assigned to this completion until all interests have been consolidated or a non-standard unit has been approved by the division.




LEGEND	
	SECTION LINE
	PROPOSED WELL BORE
	NEW MEXICO MINERAL LEASE
	330' BUFFER
	ALLOCATION AREA

LINE TABLE		
LINE	AZUMITH	LENGTH
L1	253°27'13"	588.92'
L2	179°36'33"	10,414.92'

COORDINATE TABLE	
<b>SHL (NAD 83 NME)</b> Y = 440,279.72 N X = 701,981.73 E LAT. = 32.209339 °N LONG. = 103.813926 °W	<b>SHL (NAD 27 NME)</b> Y = 440,220.77 N X = 660,797.83 E LAT. = 32.209215 °N LONG. = 103.813441 °W
<b>FTP (NAD 83 NME)</b> Y = 440,447.44 N X = 702,546.26 E LAT. = 32.209792 °N LONG. = 103.812098 °W	<b>FTP (NAD 27 NME)</b> Y = 440,388.50 N X = 661,362.37 E LAT. = 32.209669 °N LONG. = 103.811613 °W
<b>PPP 1 (NAD 83 NME)</b> Y = 437,904.55 N X = 702,563.61 E LAT. = 32.202802 °N LONG. = 103.812082 °W	<b>PPP 1 (NAD 27 NME)</b> Y = 437,845.67 N X = 661,379.62 E LAT. = 32.202678 °N LONG. = 103.811597 °W
<b>PPP 2 (NAD 83 NME)</b> Y = 435,264.95 N X = 702,581.61 E LAT. = 32.195546 °N LONG. = 103.812065 °W	<b>PPP 2 (NAD 27 NME)</b> Y = 435,206.14 N X = 661,397.52 E LAT. = 32.195422 °N LONG. = 103.811581 °W
<b>LTP (NAD 83 NME)</b> Y = 430,082.76 N X = 702,616.95 E LAT. = 32.181301 °N LONG. = 103.812032 °W	<b>LTP (NAD 27 NME)</b> Y = 430,024.09 N X = 661,432.67 E LAT. = 32.181177 °N LONG. = 103.811548 °W
<b>BHL (NAD 83 NME)</b> Y = 430,032.76 N X = 702,617.29 E LAT. = 32.181164 °N LONG. = 103.812031 °W	<b>BHL (NAD 27 NME)</b> Y = 429,974.09 N X = 661,433.00 E LAT. = 32.181040 °N LONG. = 103.811548 °W

CORNER COORDINATES (NAD 83 NME)	
A - Y = 440,553.04 N	A - X = 703,690.38 E
B - Y = 437,910.49 N	B - X = 703,713.51 E
C - Y = 435,272.13 N	C - X = 703,726.15 E
D - Y = 432,631.20 N	D - X = 703,744.93 E
E - Y = 429,989.65 N	E - X = 703,762.60 E
F - Y = 440,546.59 N	F - X = 702,371.02 E
G - Y = 437,903.66 N	G - X = 702,391.31 E
H - Y = 435,263.85 N	H - X = 702,406.35 E
I - Y = 432,622.97 N	I - X = 702,424.75 E
J - Y = 429,981.71 N	J - X = 702,442.60 E

CORNER COORDINATES (NAD 27 NME)	
A - Y = 440,494.10 N	A - X = 662,506.48 E
B - Y = 437,851.62 N	B - X = 662,529.51 E
C - Y = 435,213.33 N	C - X = 662,542.05 E
D - Y = 432,572.47 N	D - X = 662,560.73 E
E - Y = 429,930.99 N	E - X = 662,578.30 E
F - Y = 440,487.64 N	F - X = 661,187.13 E
G - Y = 437,844.78 N	G - X = 661,207.32 E
H - Y = 435,205.04 N	H - X = 661,222.26 E
I - Y = 432,564.23 N	I - X = 661,240.57 E
J - Y = 429,923.04 N	J - X = 661,258.32 E

**<sup>17</sup> OPERATOR CERTIFICATION**  
*I hereby certify that the information contained herein is true and complete to the best of my knowledge and belief, and that this organization either owns a working interest or unleased mineral interest in the land including the proposed bottom hole location or has a right to drill this well at this location pursuant to a contract with an owner of such a mineral or working interest, or to a voluntary pooling agreement or a compulsory pooling order heretofore entered by the division.*  
 10/8/2023  
Signature Date

Jean A. Cooper  
Printed Name  
jean.cooper@exxonmobil.com  
E-mail Address

**<sup>18</sup> SURVEYOR CERTIFICATION**  
*I hereby certify that the well location shown on this plat was plotted from field notes of actual surveys made by me or under my supervision, and that the same is true and correct to the best of my belief.*  
**09-26-2023**  
Date of Survey  
Signature and Seal of Professional Surveyor:



**DRILLING PLAN: BLM COMPLIANCE**  
(Supplement to BLM 3160-3)

XTO Energy Inc.  
PLU 18 Twin Wells Ranch 311H  
Projected TD: 21147' MD / 10227' TVD  
SHL: 265' FNL & 1711' FEL , Section 19, T24S, R31E  
BHL: 50' FSL & 1145' FEL , Section 30, T24S, R31E  
Eddy County, NM

**1. Geologic Name of Surface Formation**

A. Quaternary

**2. Estimated Tops of Geological Markers & Depths of Anticipated Fresh Water, Oil or Gas**

Formation	Well Depth (TVD)	Water/Oil/Gas
Rustler	595'	Water
Top of Salt	960'	Water
Base of Salt	4066'	Water
Delaware	4298'	Water
Brushy Canyon	6803'	Water/Oil/Gas
Bone Spring	8135'	Water
1st Bone Spring	9120'	Water/Oil/Gas
2nd Bone Spring	9915'	Water/Oil/Gas
<b>Target/Land Curve</b>	<b>10227'</b>	<b>Water/Oil/Gas</b>

\*\*\* Hydrocarbons @ Brushy Canyon

\*\*\* Groundwater depth 40' (per NM State Engineers Office).

No other formations are expected to yield oil, gas or fresh water in measurable volumes. The surface fresh water sands will be protected by setting 9.625 inch casing @ 695' (265' above the salt) and circulating cement back to surface. The intermediate will isolate from the top of salt down to the next casing seat by setting 7.625 inch casing at 9408' and cemented to surface. A 6.75 inch curve and 6.75 inch lateral hole will be drilled to 21147 MD/TD and 5.5 inch production casing will be set at TD and cemented back up in the intermediate shoe (estimated TOC 9108 feet).

**3. Casing Design**

Hole Size	Depth	OD Csg	Weight	Grade	Collar	New/Used	SF Burst	SF Collapse	SF Tension
12.25	0' – 695'	9.625	40	J-55	BTC	New	1.35	9.06	22.66
8.75	0' – 4000'	7.625	29.7	RY P-110	Flush Joint	New	2.15	2.52	2.00
8.75	4000' – 9408'	7.625	29.7	HC L-80	Flush Joint	New	1.56	1.95	2.53
6.75	0' – 9308'	5.5	20	RY P-110	Semi-Premium	New	1.26	1.83	2.23
6.75	9308' - 21147'	5.5	20	RY P-110	Semi-Flush	New	1.26	1.67	2.23

- XTO requests the option to utilize a spudder rig (Atlas Copco RD20 or Equivalent) to set and cement surface casing per this Sundry
- XTO requests to not utilize centralizers in the curve and lateral
- 7.625 Collapse analyzed using 50% evacuation based on regional experience.
- 5.5 Tension calculated using vertical hanging weight plus the lateral weight multiplied by a friction factor of 0.35
- Test on Casing will be limited to 70% burst of the casing or 1500 psi, whichever is less
- XTO requests the option to use 5" BTC Float equipment for the the production casing

**Wellhead:**

*Permanent Wellhead – Multibowl System*

A. Starting Head: 11" 10M top flange x 9-5/8" bottom

B. Tubing Head: 11" 10M bottom flange x 7-1/16" 15M top flange

- Wellhead will be installed by manufacturer's representatives.
- Manufacturer will monitor welding process to ensure appropriate temperature of seal.
- Operator will test the 7-5/8" casing per BLM Onshore Order 2
- Wellhead Manufacturer representative will not be present for BOP test plug installation

#### 4. Cement Program

##### **Surface Casing: 9.625, 40 New BTC, J-55 casing to be set at +/- 695'**

Lead: 130 sxs EconoCem-HLTRRC (mixed at 10.5 ppg, 1.87 ft<sup>3</sup>/sx, 10.13 gal/sx water)

Tail: 130 sxs Class C + 2% CaCl (mixed at 14.8 ppg, 1.35 ft<sup>3</sup>/sx, 6.39 gal/sx water)

Top of Cement: Surface

Compressives: 12-hr = 900 psi 24 hr = 1500 psi

##### **2nd Intermediate Casing: 7.625, 29.7 New casing to be set at +/- 9408'**

###### 1st Stage

Optional Lead: 370 sxs Class C (mixed at 10.5 ppg, 2.77 ft<sup>3</sup>/sx, 15.59 gal/sx water)

TOC: Surface

Tail: 240 sxs Class C (mixed at 14.8 ppg, 1.35 ft<sup>3</sup>/sx, 6.39 gal/sx water)

TOC: Brushy Canyon @ 6803

Compressives: 12-hr = 900 psi 24 hr = 1150 psi

###### 2nd Stage

Lead: 0 sxs Class C (mixed at 12.9 ppg, 2.16 ft<sup>3</sup>/sx, 9.61 gal/sx water)

Tail: 770 sxs Class C (mixed at 14.8 ppg, 1.33 ft<sup>3</sup>/sx, 6.39 gal/sx water)

Top of Cement: 0

Compressives: 12-hr = 900 psi 24 hr = 1150 psi

XTO requests to pump a two stage cement job on the 7-5/8" intermediate casing string with the first stage being pumped conventionally with the calculated top of cement at the Brush Canyon (6803') and the second stage performed as a bradenhead squeeze with planned cement from the Brushy Canyon to surface. If cement is not visually confirmed to circulate to surface, the final cement top after the second stage job will be verified by Echo-meter. If necessary, a top out consisting of 1,500 sack of Class C cement + 3% Salt + 1% PreMag-M + 6% Bentonite Gel (2.30 yld, 12.91 ppg) will be executed as a contingency. If cement is still unable to circulate to surface, another Echo-meter run will be performed for cement top verification.

XTO will report to the BLM the volume of fluid (limited to 5 bbls) used to flush intermediate casing valves following backside cementing procedures.

XTO requests to pump an Optional Lead if well conditions dictate in an attempt to bring cement inside the first intermediate casing. If cement reaches the desired height, the BLM will be notified and the second stage bradenhead squeeze and subsequent TOC verification will be negated.

XTO requests the option to conduct the bradenhead squeeze and TOC verification offline as per standard approval from BLM when unplanned remediation is needed and batch drilling is approved. In the event the bradenhead is conducted, we will ensure the first stage cement job is cemented properly and the well is static with floats holding and no pressure on the csg annulus as with all other casing strings where batch drilling operations occur before moving off the rig. The TA cap will also be installed per Cactus procedure and pressure inside the casing will be monitored via the valve on the TA cap as per standard batch drilling ops.

##### **Production Casing: 5.5, 20 New Semi-Flush, RY P-110 casing to be set at +/- 21147'**

Lead: 20 sxs NeoCem (mixed at 11.5 ppg, 2.69 ft<sup>3</sup>/sx, 15.00 gal/sx water) Top of Cement: 9108 feet

Tail: 820 sxs VersaCem (mixed at 13.2 ppg, 1.51 ft<sup>3</sup>/sx, 8.38 gal/sx water) Top of Cement: 9608 feet

Compressives: 12-hr = 800 psi 24 hr = 1500 psi

XTO requests the option to offline cement and remediate (if needed) surface and intermediate casing strings where batch drilling is approved and if unplanned remediation is needed. XTO will ensure well is static with no pressure on the csg annulus, as with all other casing strings where batch drilling operations occur before moving off the rig. The TA cap will also be installed when applicable per Cactus procedure and pressure inside the casing will be monitored via the valve on the TA cap as per standard batch drilling ops. Offline cement operations will then be conducted after the rig is moved off the current well to the next well in the batch sequence.

## 5. Pressure Control Equipment

Once the permanent WH is installed on the 9.625 casing, the blow out preventer equipment (BOP) will consist of a 13-5/8" minimum 5M Hydril and a 13-5/8" minimum 5M Double Ram BOP. MASP should not exceed 4398 psi. In any instance where 10M BOP is required by BLM, XTO requests a variance to utilize 5M annular with 10M ram preventers (a common BOP configuration, which allows use of 10M rams in unlikely event that pressures exceed 5M).

All BOP testing will be done by an independent service company. Annular pressure tests will be limited to 50% of the working pressure. When nipping up on the 9.625, 5M bradenhead and flange, the BOP test will be limited to 5000 psi. When nipping up on the 7.625, the BOP will be tested to a minimum of 5000 psi. All BOP tests will include a low pressure test as per BLM regulations. The 5M BOP diagrams are attached. Blind rams will be functioned tested each trip, pipe rams will be functioned tested each day.

A variance is requested to allow use of a flex hose as the choke line from the BOP to the Choke Manifold. If this hose is used, a copy of the manufacturer's certification and pressure test chart will be kept on the rig. Attached is an example of a certification and pressure test chart. The manufacturer does not require anchors.

XTO requests a variance to be able to batch drill this well if necessary. In doing so, XTO will set casing and ensure that the well is cemented properly (unless approval is given for offline cementing) and the well is static. With floats holding, no pressure on the csg annulus, and the installation of a 10K TA cap as per Cactus recommendations, XTO will contact the BLM to skid the rig to drill the remaining wells on the pad. Once surface and both intermediate strings are all completed, XTO will begin drilling the production

hole on each of the wells.

A variance is requested to **ONLY** test broken pressure seals on the BOP equipment when moving from wellhead to wellhead which is in compliance with API Standard 53. API standard 53 states, that for pad drilling operation, moving from one wellhead to another within 21 days, pressure testing is required for pressure-containing and pressure-controlling connections when the integrity of a pressure seal is broken. Based on discussions with the BLM on February 27th 2020, we will request permission to **ONLY** retest broken pressure seals if the following conditions are met: 1. After a full BOP test is conducted on the first well on the pad 2. When skidding to drill an intermediate section that does not penetrate into the Wolfcamp.

## 6. Proposed Mud Circulation System

INTERVAL	Hole Size	Mud Type	MW (ppg)	Viscosity (sec/qt)	Fluid Loss (cc)
0' - 695'	12.25	FW/Native	8.4-8.9	35-40	NC
695' - 9408'	8.75	FW / Cut Brine / Direct Emulsion	10.2-10.7	30-32	NC
9408' - 21147'	6.75	OBM	12.5-13	50-60	NC - 20

The necessary mud products for weight addition and fluid loss control will be on location at all times.

Spud with fresh water/native mud. Drill out from under 9-5/8" surface casing with brine solution. A 9.7 ppg - 10.2 ppg cut brine mud will be used while drilling through the salt formation. Use fibrous materials as needed to control seepage and lost circulation. Pump viscous sweeps as needed for hole cleaning. Pump speed will be recorded on a daily drilling report after mudding up. A Pason or Totco will be used to detect changes in loss or gain of mud volume. A mud test will be performed every 24 hours to determine: density, viscosity, strength, filtration and pH as necessary. Use available solids controls equipment to help keep mud weight down after mud up. Rig up solids control equipment to operate as a closed loop system.

## 7. Auxiliary Well Control and Monitoring Equipment

- A. A Kelly cock will be in the drill string at all times.
- B. A full opening drill pipe stabbing valve having appropriate connections will be on the rig floor at all times.
- C. H2S monitors will be on location when drilling below the 9.625 casing.

## 8. Logging, Coring and Testing Program

Mud Logger: Mud Logging Unit (2 man) below intermediate casing.

Open hole logging will not be done on this well.

## 9. Abnormal Pressures and Temperatures / Potential Hazards

None Anticipated. BHT of 165 to 185 F is anticipated. No H2S is expected but monitors will be in place to detect any H2S occurrences. Should these circumstances be encountered the operator and drilling contractor are prepared to take all necessary steps to ensure safety of all personnel and environment. Lost circulation could occur but is not expected to be a serious problem in this area and hole seepage will be compensated for by additions of small amounts of LCM in the drilling fluid. The maximum anticipated bottom hole pressure for this well is 6648 psi.

## 10. Anticipated Starting Date and Duration of Operations

Anticipated spud date will be after BLM approval. Move in operations and drilling is expected to take 40 days.



## Well Plan Report - Poker Lake Unit 18 TWR 311H

Measured Depth: 21147.30 ft

TVD RKB: 10220.00 ft

### Location

Cartographic  
Reference System: New Mexico East -  
NAD 27

Northing: 440220.77 ft

Easting: 660797.83 ft

RKB: 3532.00 ft

Ground Level: 3493.00 ft

North Reference: Grid

Convergence Angle: 0.28 Deg

Site: A

Slot: Poker Lake Unit 18  
TWR 311H

### Plan Sections

Poker Lake Unit 18 TWR 311H

Measured			TVD			Build	Turn	Dogleg		
Depth	Inclination	Azimuth	RKB	Y Offset	X Offset	Rate	Rate	Rate		
(ft)	(Deg)	(Deg)	(ft)	(ft)	(ft)	(Deg/100ft)	(Deg/100ft)	(Deg/100ft)	Target	
0.00	0.00	0.00	7.00	0.00	0.00	0.00	0.00	0.00		
1200.00	0.00	0.00	1207.00	0.00	0.00	0.00	0.00	0.00		
1789.61	11.79	32.34	1792.46	51.08	32.34	2.00	0.00	2.00		
6317.25	11.79	32.34	6224.54	832.83	527.34	0.00	0.00	0.00		
6906.86	0.00	0.00	6810.00	883.91	559.68	-2.00	0.00	2.00		
9607.67	0.00	0.00	9510.80	883.91	559.68	0.00	0.00	0.00		
10732.67	90.00	179.61	10227.00	167.73	564.54	8.00	0.00	8.00	FTP 4	
21097.31	90.00	179.61	10227.00	-10196.68	634.84	0.00	0.00	0.00	LTP 4	
21147.30	90.00	179.61	10227.00	-10246.67	635.18	0.00	0.00	0.00	BHL 4	

### Position Uncertainty

Poker Lake Unit 18 TWR 311H

Measured	TVD	Highside	Lateral	Vertical	Magnitude	Semi-major	Semi-minor	Semi-minor	Tool
----------	-----	----------	---------	----------	-----------	------------	------------	------------	------

Depth	Inclination	Azimuth	RKB	Error	Bias	Error	Bias	Error	Bias	of Bias	Error	Error	Azimuth	Used
(ft)	(°)	(°)	(ft)	(ft)	(ft)	(ft)	(ft)	(ft)	(ft)	(ft)	(ft)	(ft)	(°)	
0.000	0.000	0.000	0.000	0.000	0.000	0.000	0.000	0.000	0.000	0.000	0.000	0.000	0.000	MWD+IFR1+MS
100.000	0.000	0.000	100.000	0.700	0.000	0.350	0.000	2.300	0.000	0.000	0.751	0.220	112.264	MWD+IFR1+MS
200.000	0.000	0.000	200.000	1.112	0.000	0.861	0.000	2.310	0.000	0.000	1.259	0.627	122.711	MWD+IFR1+MS
300.000	0.000	0.000	300.000	1.497	0.000	1.271	0.000	2.326	0.000	0.000	1.698	0.986	125.469	MWD+IFR1+MS
400.000	0.000	0.000	400.000	1.871	0.000	1.658	0.000	2.348	0.000	0.000	2.108	1.344	126.713	MWD+IFR1+MS
500.000	0.000	0.000	500.000	2.240	0.000	2.034	0.000	2.375	0.000	0.000	2.503	1.701	127.419	MWD+IFR1+MS
600.000	0.000	0.000	600.000	2.607	0.000	2.405	0.000	2.408	0.000	0.000	2.888	2.059	127.873	MWD+IFR1+MS
700.000	0.000	0.000	700.000	2.971	0.000	2.773	0.000	2.445	0.000	0.000	3.267	2.417	128.190	MWD+IFR1+MS
800.000	0.000	0.000	800.000	3.334	0.000	3.138	0.000	2.487	0.000	0.000	3.642	2.775	128.423	MWD+IFR1+MS
900.000	0.000	0.000	900.000	3.696	0.000	3.502	0.000	2.534	0.000	0.000	4.014	3.133	128.602	MWD+IFR1+MS
1000.000	0.000	0.000	1000.000	4.058	0.000	3.865	0.000	2.584	0.000	0.000	4.384	3.491	128.744	MWD+IFR1+MS
1100.000	0.000	0.000	1100.000	4.419	0.000	4.228	0.000	2.638	0.000	0.000	4.752	3.849	128.859	MWD+IFR1+MS
1200.000	0.000	0.000	1200.000	4.779	0.000	4.589	0.000	2.695	0.000	0.000	5.119	4.207	128.954	MWD+IFR1+MS
1300.000	2.000	32.342	1299.980	5.632	0.000	4.590	0.000	2.754	0.000	0.000	5.654	4.567	130.354	MWD+IFR1+MS
1400.000	4.000	32.342	1399.838	6.361	0.000	4.977	0.000	2.818	0.000	0.000	6.410	4.926	132.296	MWD+IFR1+MS
1500.000	6.000	32.342	1499.452	7.025	0.000	5.359	0.000	2.886	0.000	0.000	7.104	5.284	133.230	MWD+IFR1+MS
1600.000	8.000	32.342	1598.702	7.639	0.000	5.738	0.000	2.961	0.000	0.000	7.750	5.640	133.772	MWD+IFR1+MS
1700.000	10.000	32.342	1697.465	8.214	0.000	6.114	0.000	3.046	0.000	0.000	8.359	5.998	134.124	MWD+IFR1+MS
1789.610	11.792	32.342	1785.457	8.647	0.000	6.446	0.000	3.126	0.000	0.000	8.823	6.319	134.278	MWD+IFR1+MS
1800.000	11.792	32.342	1795.627	8.675	0.000	6.482	0.000	3.129	0.000	0.000	8.851	6.356	134.253	MWD+IFR1+MS
1900.000	11.792	32.342	1893.517	8.948	0.000	6.841	0.000	3.207	0.000	0.000	9.116	6.722	134.246	MWD+IFR1+MS
2000.000	11.792	32.342	1991.406	9.242	0.000	7.220	0.000	3.291	0.000	0.000	9.407	7.100	134.576	MWD+IFR1+MS
2100.000	11.792	32.342	2089.296	9.543	0.000	7.599	0.000	3.377	0.000	0.000	9.704	7.479	134.900	MWD+IFR1+MS
2200.000	11.792	32.342	2187.185	9.850	0.000	7.979	0.000	3.467	0.000	0.000	10.007	7.858	-44.782	MWD+IFR1+MS
2300.000	11.792	32.342	2285.075	10.163	0.000	8.359	0.000	3.558	0.000	0.000	10.314	8.238	-44.470	MWD+IFR1+MS
2400.000	11.792	32.342	2382.964	10.480	0.000	8.740	0.000	3.653	0.000	0.000	10.627	8.618	-44.163	MWD+IFR1+MS
2500.000	11.792	32.342	2480.854	10.802	0.000	9.120	0.000	3.749	0.000	0.000	10.943	8.999	-43.862	MWD+IFR1+MS
2600.000	11.792	32.342	2578.743	11.128	0.000	9.502	0.000	3.848	0.000	0.000	11.264	9.380	-43.567	MWD+IFR1+MS
2700.000	11.792	32.342	2676.633	11.458	0.000	9.883	0.000	3.948	0.000	0.000	11.588	9.761	-43.276	MWD+IFR1+MS
2800.000	11.792	32.342	2774.522	11.791	0.000	10.265	0.000	4.051	0.000	0.000	11.915	10.142	-42.990	MWD+IFR1+MS
2900.000	11.792	32.342	2872.412	12.128	0.000	10.647	0.000	4.155	0.000	0.000	12.246	10.523	-42.708	MWD+IFR1+MS

3000.000	11.792	32.342	2970.301	12.467	0.000	11.029	0.000	4.262	0.000	0.000	12.579	10.905	-42.431	MWD+IFR1+MS
3100.000	11.792	32.342	3068.191	12.809	0.000	11.411	0.000	4.369	0.000	0.000	12.915	11.287	-42.158	MWD+IFR1+MS
3200.000	11.792	32.342	3166.080	13.154	0.000	11.793	0.000	4.479	0.000	0.000	13.253	11.669	-41.888	MWD+IFR1+MS
3300.000	11.792	32.342	3263.970	13.501	0.000	12.175	0.000	4.590	0.000	0.000	13.593	12.051	-41.623	MWD+IFR1+MS
3400.000	11.792	32.342	3361.859	13.850	0.000	12.558	0.000	4.703	0.000	0.000	13.935	12.433	-41.361	MWD+IFR1+MS
3500.000	11.792	32.342	3459.749	14.200	0.000	12.941	0.000	4.817	0.000	0.000	14.279	12.816	-41.102	MWD+IFR1+MS
3600.000	11.792	32.342	3557.638	14.553	0.000	13.323	0.000	4.933	0.000	0.000	14.625	13.198	-40.846	MWD+IFR1+MS
3700.000	11.792	32.342	3655.528	14.908	0.000	13.706	0.000	5.051	0.000	0.000	14.972	13.581	-40.594	MWD+IFR1+MS
3800.000	11.792	32.342	3753.417	15.264	0.000	14.089	0.000	5.170	0.000	0.000	15.321	13.964	-40.344	MWD+IFR1+MS
3900.000	11.792	32.342	3851.307	15.621	0.000	14.472	0.000	5.290	0.000	0.000	15.672	14.347	-40.097	MWD+IFR1+MS
4000.000	11.792	32.342	3949.196	15.980	0.000	14.855	0.000	5.412	0.000	0.000	16.024	14.730	-39.852	MWD+IFR1+MS
4100.000	11.792	32.342	4047.086	16.340	0.000	15.239	0.000	5.535	0.000	0.000	16.376	15.113	-39.610	MWD+IFR1+MS
4200.000	11.792	32.342	4144.975	16.701	0.000	15.622	0.000	5.660	0.000	0.000	16.731	15.496	-39.370	MWD+IFR1+MS
4300.000	11.792	32.342	4242.865	17.064	0.000	16.005	0.000	5.787	0.000	0.000	17.086	15.879	-39.132	MWD+IFR1+MS
4400.000	11.792	32.342	4340.754	17.427	0.000	16.388	0.000	5.915	0.000	0.000	17.442	16.262	-38.896	MWD+IFR1+MS
4500.000	11.792	32.342	4438.644	17.791	0.000	16.772	0.000	6.044	0.000	0.000	17.799	16.646	-38.661	MWD+IFR1+MS
4600.000	11.792	32.342	4536.534	18.157	0.000	17.155	0.000	6.175	0.000	0.000	18.157	17.029	-38.428	MWD+IFR1+MS
4700.000	11.792	32.342	4634.423	18.523	0.000	17.539	0.000	6.308	0.000	0.000	18.516	17.413	-38.197	MWD+IFR1+MS
4800.000	11.792	32.342	4732.313	18.890	0.000	17.922	0.000	6.442	0.000	0.000	18.876	17.796	-37.967	MWD+IFR1+MS
4900.000	11.792	32.342	4830.202	19.258	0.000	18.306	0.000	6.578	0.000	0.000	19.236	18.180	-37.739	MWD+IFR1+MS
5000.000	11.792	32.342	4928.092	19.626	0.000	18.689	0.000	6.715	0.000	0.000	19.597	18.564	-37.511	MWD+IFR1+MS
5100.000	11.792	32.342	5025.981	19.996	0.000	19.073	0.000	6.854	0.000	0.000	19.959	18.947	-37.285	MWD+IFR1+MS
5200.000	11.792	32.342	5123.871	20.365	0.000	19.456	0.000	6.995	0.000	0.000	20.322	19.331	-37.059	MWD+IFR1+MS
5300.000	11.792	32.342	5221.760	20.736	0.000	19.840	0.000	7.137	0.000	0.000	20.685	19.715	-36.834	MWD+IFR1+MS
5400.000	11.792	32.342	5319.650	21.107	0.000	20.224	0.000	7.281	0.000	0.000	21.048	20.099	-36.610	MWD+IFR1+MS
5500.000	11.792	32.342	5417.539	21.479	0.000	20.608	0.000	7.427	0.000	0.000	21.413	20.483	-36.387	MWD+IFR1+MS
5600.000	11.792	32.342	5515.429	21.851	0.000	20.991	0.000	7.575	0.000	0.000	21.777	20.867	-36.163	MWD+IFR1+MS
5700.000	11.792	32.342	5613.318	22.223	0.000	21.375	0.000	7.724	0.000	0.000	22.143	21.251	-35.941	MWD+IFR1+MS
5800.000	11.792	32.342	5711.208	22.596	0.000	21.759	0.000	7.875	0.000	0.000	22.508	21.635	-35.718	MWD+IFR1+MS
5900.000	11.792	32.342	5809.097	22.970	0.000	22.143	0.000	8.028	0.000	0.000	22.874	22.019	-35.495	MWD+IFR1+MS
6000.000	11.792	32.342	5906.987	23.344	0.000	22.526	0.000	8.183	0.000	0.000	23.241	22.403	-35.273	MWD+IFR1+MS
6100.000	11.792	32.342	6004.876	23.718	0.000	22.910	0.000	8.340	0.000	0.000	23.608	22.787	-35.050	MWD+IFR1+MS
6200.000	11.792	32.342	6102.766	24.093	0.000	23.294	0.000	8.499	0.000	0.000	23.975	23.171	-34.827	MWD+IFR1+MS

6300.000	11.792	32.342	6200.655	24.468	0.000	23.678	0.000	8.659	0.000	0.000	24.343	23.555	-34.603	MWD+IFR1+MS
6317.252	11.792	32.342	6217.543	24.532	0.000	23.743	0.000	8.687	0.000	0.000	24.405	23.621	-34.628	MWD+IFR1+MS
6400.000	10.137	32.342	6298.778	24.870	0.000	24.053	0.000	8.822	0.000	0.000	24.712	23.935	-34.887	MWD+IFR1+MS
6500.000	8.137	32.342	6397.504	25.321	0.000	24.426	0.000	8.988	0.000	0.000	25.154	24.309	-35.974	MWD+IFR1+MS
6600.000	6.137	32.342	6496.724	25.751	0.000	24.792	0.000	9.148	0.000	0.000	25.608	24.674	-37.029	MWD+IFR1+MS
6700.000	4.137	32.342	6596.317	26.143	0.000	25.149	0.000	9.302	0.000	0.000	26.055	25.030	-37.894	MWD+IFR1+MS
6800.000	2.137	32.342	6696.162	26.497	0.000	25.499	0.000	9.452	0.000	0.000	26.493	25.378	-38.601	MWD+IFR1+MS
6906.863	0.000	0.000	6803.000	26.268	0.000	26.442	0.000	9.607	0.000	0.000	26.942	25.755	-40.799	MWD+IFR1+MS
7000.000	0.000	0.000	6896.137	26.613	0.000	26.746	0.000	9.742	0.000	0.000	27.269	26.076	-41.811	MWD+IFR1+MS
7100.000	0.000	0.000	6996.137	26.949	0.000	27.073	0.000	9.890	0.000	0.000	27.597	26.412	-42.006	MWD+IFR1+MS
7200.000	0.000	0.000	7096.137	27.286	0.000	27.401	0.000	10.040	0.000	0.000	27.927	26.748	-42.201	MWD+IFR1+MS
7300.000	0.000	0.000	7196.137	27.624	0.000	27.730	0.000	10.193	0.000	0.000	28.257	27.084	-42.394	MWD+IFR1+MS
7400.000	0.000	0.000	7296.137	27.962	0.000	28.060	0.000	10.349	0.000	0.000	28.589	27.421	-42.584	MWD+IFR1+MS
7500.000	0.000	0.000	7396.137	28.300	0.000	28.391	0.000	10.507	0.000	0.000	28.920	27.759	-42.771	MWD+IFR1+MS
7600.000	0.000	0.000	7496.137	28.640	0.000	28.722	0.000	10.669	0.000	0.000	29.253	28.097	-42.956	MWD+IFR1+MS
7700.000	0.000	0.000	7596.137	28.979	0.000	29.054	0.000	10.833	0.000	0.000	29.586	28.436	-43.138	MWD+IFR1+MS
7800.000	0.000	0.000	7696.137	29.319	0.000	29.386	0.000	11.001	0.000	0.000	29.920	28.775	-43.318	MWD+IFR1+MS
7900.000	0.000	0.000	7796.137	29.660	0.000	29.719	0.000	11.171	0.000	0.000	30.254	29.114	-43.495	MWD+IFR1+MS
8000.000	0.000	0.000	7896.137	30.000	0.000	30.053	0.000	11.344	0.000	0.000	30.589	29.454	-43.670	MWD+IFR1+MS
8100.000	0.000	0.000	7996.137	30.342	0.000	30.387	0.000	11.520	0.000	0.000	30.924	29.795	-43.842	MWD+IFR1+MS
8200.000	0.000	0.000	8096.137	30.683	0.000	30.722	0.000	11.700	0.000	0.000	31.260	30.135	-44.013	MWD+IFR1+MS
8300.000	0.000	0.000	8196.137	31.025	0.000	31.058	0.000	11.882	0.000	0.000	31.596	30.477	-44.181	MWD+IFR1+MS
8400.000	0.000	0.000	8296.137	31.368	0.000	31.393	0.000	12.067	0.000	0.000	31.933	30.818	-44.346	MWD+IFR1+MS
8500.000	0.000	0.000	8396.137	31.711	0.000	31.730	0.000	12.255	0.000	0.000	32.271	31.160	-44.510	MWD+IFR1+MS
8600.000	0.000	0.000	8496.137	32.054	0.000	32.066	0.000	12.446	0.000	0.000	32.609	31.502	-44.671	MWD+IFR1+MS
8700.000	0.000	0.000	8596.137	32.397	0.000	32.404	0.000	12.640	0.000	0.000	32.947	31.845	-44.830	MWD+IFR1+MS
8800.000	0.000	0.000	8696.137	32.741	0.000	32.741	0.000	12.838	0.000	0.000	33.286	32.188	-44.987	MWD+IFR1+MS
8900.000	0.000	0.000	8796.137	33.085	0.000	33.080	0.000	13.038	0.000	0.000	33.625	32.531	134.858	MWD+IFR1+MS
9000.000	0.000	0.000	8896.137	33.429	0.000	33.418	0.000	13.242	0.000	0.000	33.964	32.874	134.705	MWD+IFR1+MS
9100.000	0.000	0.000	8996.137	33.774	0.000	33.757	0.000	13.448	0.000	0.000	34.305	33.218	134.555	MWD+IFR1+MS
9200.000	0.000	0.000	9096.137	34.119	0.000	34.097	0.000	13.658	0.000	0.000	34.645	33.562	134.406	MWD+IFR1+MS
9300.000	0.000	0.000	9196.137	34.464	0.000	34.436	0.000	13.870	0.000	0.000	34.986	33.907	134.259	MWD+IFR1+MS
9400.000	0.000	0.000	9296.137	34.810	0.000	34.777	0.000	14.086	0.000	0.000	35.327	34.251	134.114	MWD+IFR1+MS

9500.000	0.000	0.000	9396.137	35.156	0.000	35.117	0.000	14.305	0.000	0.000	35.668	34.596	133.971	MWD+IFR1+MS
9607.665	0.000	0.000	9503.803	35.529	0.000	35.485	0.000	14.544	0.000	0.000	36.038	34.968	133.821	MWD+IFR1+MS
9700.000	7.387	179.611	9595.882	35.372	0.000	35.783	-0.000	14.755	0.000	0.000	36.420	35.350	128.905	MWD+IFR1+MS
9800.000	15.387	179.611	9693.834	35.559	0.000	36.071	-0.000	15.069	0.000	0.000	37.529	35.838	111.147	MWD+IFR1+MS
9900.000	23.387	179.611	9788.087	35.294	0.000	36.335	-0.000	15.569	0.000	0.000	38.705	36.163	104.465	MWD+IFR1+MS
10000.000	31.387	179.611	9876.807	34.552	0.000	36.575	-0.000	16.314	0.000	0.000	39.736	36.423	101.688	MWD+IFR1+MS
10100.000	39.387	179.611	9958.267	33.427	0.000	36.788	-0.000	17.332	0.000	0.000	40.586	36.644	100.348	MWD+IFR1+MS
10200.000	47.387	179.611	10030.882	32.040	0.000	36.976	-0.000	18.612	0.000	0.000	41.247	36.832	99.706	MWD+IFR1+MS
10300.000	55.387	179.611	10093.237	30.548	0.000	37.138	-0.000	20.116	0.000	0.000	41.726	36.990	99.478	MWD+IFR1+MS
10400.000	63.387	179.611	10144.120	29.141	0.000	37.276	-0.000	21.786	0.000	0.000	42.042	37.120	99.529	MWD+IFR1+MS
10500.000	71.387	179.611	10182.539	28.037	0.000	37.389	-0.000	23.558	0.000	0.000	42.223	37.223	99.779	MWD+IFR1+MS
10600.000	79.387	179.611	10207.748	27.447	0.000	37.480	-0.000	25.370	0.000	0.000	42.305	37.301	100.158	MWD+IFR1+MS
10700.000	87.387	179.611	10219.255	27.539	0.000	37.547	-0.000	27.160	0.000	0.000	42.331	37.355	100.583	MWD+IFR1+MS
10732.665	90.000	179.611	10220.000	27.290	0.000	37.561	-0.000	27.290	0.000	0.000	42.336	37.365	100.702	MWD+IFR1+MS
10800.000	90.000	179.611	10220.000	27.437	0.000	37.593	-0.000	27.437	0.000	0.000	42.344	37.389	100.963	MWD+IFR1+MS
10900.000	90.000	179.611	10220.000	27.639	0.000	37.663	-0.000	27.639	0.000	0.000	42.358	37.445	101.400	MWD+IFR1+MS
11000.000	90.000	179.611	10220.000	27.865	0.000	37.754	-0.000	27.865	0.000	0.000	42.375	37.521	101.893	MWD+IFR1+MS
11100.000	90.000	179.611	10220.000	28.110	0.000	37.866	-0.000	28.110	0.000	0.000	42.393	37.616	102.446	MWD+IFR1+MS
11200.000	90.000	179.611	10220.000	28.375	0.000	37.998	-0.000	28.375	0.000	0.000	42.414	37.730	103.068	MWD+IFR1+MS
11300.000	90.000	179.611	10220.000	28.659	0.000	38.150	-0.000	28.659	0.000	0.000	42.437	37.861	103.767	MWD+IFR1+MS
11400.000	90.000	179.611	10220.000	28.961	0.000	38.322	-0.000	28.961	0.000	0.000	42.463	38.010	104.556	MWD+IFR1+MS
11500.000	90.000	179.611	10220.000	29.282	0.000	38.513	-0.000	29.282	0.000	0.000	42.493	38.174	105.450	MWD+IFR1+MS
11600.000	90.000	179.611	10220.000	29.620	0.000	38.723	-0.000	29.620	0.000	0.000	42.527	38.355	106.467	MWD+IFR1+MS
11700.000	90.000	179.611	10220.000	29.974	0.000	38.952	-0.000	29.974	0.000	0.000	42.566	38.549	107.628	MWD+IFR1+MS
11800.000	90.000	179.611	10220.000	30.345	0.000	39.199	-0.000	30.345	0.000	0.000	42.611	38.757	108.958	MWD+IFR1+MS
11900.000	90.000	179.611	10220.000	30.731	0.000	39.464	-0.000	30.731	0.000	0.000	42.663	38.977	110.488	MWD+IFR1+MS
12000.000	90.000	179.611	10220.000	31.132	0.000	39.747	-0.000	31.132	0.000	0.000	42.723	39.206	112.254	MWD+IFR1+MS
12100.000	90.000	179.611	10220.000	31.548	0.000	40.048	-0.000	31.548	0.000	0.000	42.794	39.443	114.294	MWD+IFR1+MS
12200.000	90.000	179.611	10220.000	31.977	0.000	40.365	-0.000	31.977	0.000	0.000	42.877	39.685	116.649	MWD+IFR1+MS
12300.000	90.000	179.611	10220.000	32.420	0.000	40.699	-0.000	32.420	0.000	0.000	42.977	39.927	119.354	MWD+IFR1+MS
12400.000	90.000	179.611	10220.000	32.876	0.000	41.049	-0.000	32.876	0.000	0.000	43.096	40.167	122.432	MWD+IFR1+MS
12500.000	90.000	179.611	10220.000	33.344	0.000	41.415	-0.000	33.344	0.000	0.000	43.239	40.400	125.877	MWD+IFR1+MS
12600.000	90.000	179.611	10220.000	33.823	0.000	41.797	-0.000	33.823	0.000	0.000	43.410	40.620	129.639	MWD+IFR1+MS



12700.000	90.000	179.611	10220.000	34.314	0.000	42.193	-0.000	34.314	0.000	0.000	43.612	40.825	133.616	MWD+IFR1+MS
12800.000	90.000	179.611	10220.000	34.816	0.000	42.604	-0.000	34.816	0.000	0.000	43.849	41.010	-42.334	MWD+IFR1+MS
12900.000	90.000	179.611	10220.000	35.328	0.000	43.029	-0.000	35.328	0.000	0.000	44.121	41.174	-38.373	MWD+IFR1+MS
13000.000	90.000	179.611	10220.000	35.849	0.000	43.467	-0.000	35.849	0.000	0.000	44.429	41.317	-34.641	MWD+IFR1+MS
13100.000	90.000	179.611	10220.000	36.381	0.000	43.919	-0.000	36.381	0.000	0.000	44.769	41.441	-31.232	MWD+IFR1+MS
13200.000	90.000	179.611	10220.000	36.921	0.000	44.384	-0.000	36.921	0.000	0.000	45.140	41.548	-28.190	MWD+IFR1+MS
13300.000	90.000	179.611	10220.000	37.470	0.000	44.861	-0.000	37.470	0.000	0.000	45.539	41.641	-25.518	MWD+IFR1+MS
13400.000	90.000	179.611	10220.000	38.027	0.000	45.350	-0.000	38.027	0.000	0.000	45.962	41.721	-23.192	MWD+IFR1+MS
13500.000	90.000	179.611	10220.000	38.592	0.000	45.851	-0.000	38.592	0.000	0.000	46.407	41.793	-21.174	MWD+IFR1+MS
13600.000	90.000	179.611	10220.000	39.165	0.000	46.363	-0.000	39.165	0.000	0.000	46.871	41.856	-19.424	MWD+IFR1+MS
13700.000	90.000	179.611	10220.000	39.745	0.000	46.887	-0.000	39.745	0.000	0.000	47.353	41.913	-17.903	MWD+IFR1+MS
13800.000	90.000	179.611	10220.000	40.331	0.000	47.421	-0.000	40.331	0.000	0.000	47.852	41.965	-16.576	MWD+IFR1+MS
13900.000	90.000	179.611	10220.000	40.925	0.000	47.965	-0.000	40.925	0.000	0.000	48.365	42.013	-15.413	MWD+IFR1+MS
14000.000	90.000	179.611	10220.000	41.525	0.000	48.518	-0.000	41.525	0.000	0.000	48.892	42.058	-14.389	MWD+IFR1+MS
14100.000	90.000	179.611	10220.000	42.131	0.000	49.082	-0.000	42.131	0.000	0.000	49.432	42.100	-13.483	MWD+IFR1+MS
14200.000	90.000	179.611	10220.000	42.742	0.000	49.655	-0.000	42.742	0.000	0.000	49.983	42.141	-12.678	MWD+IFR1+MS
14300.000	90.000	179.611	10220.000	43.360	0.000	50.236	-0.000	43.360	0.000	0.000	50.546	42.179	-11.958	MWD+IFR1+MS
14400.000	90.000	179.611	10220.000	43.982	0.000	50.826	-0.000	43.982	0.000	0.000	51.119	42.216	-11.311	MWD+IFR1+MS
14500.000	90.000	179.611	10220.000	44.610	0.000	51.425	-0.000	44.610	0.000	0.000	51.702	42.252	-10.729	MWD+IFR1+MS
14600.000	90.000	179.611	10220.000	45.243	0.000	52.032	-0.000	45.243	0.000	0.000	52.295	42.287	-10.201	MWD+IFR1+MS
14700.000	90.000	179.611	10220.000	45.880	0.000	52.646	-0.000	45.880	0.000	0.000	52.897	42.321	-9.721	MWD+IFR1+MS
14800.000	90.000	179.611	10220.000	46.522	0.000	53.268	-0.000	46.522	0.000	0.000	53.507	42.355	-9.284	MWD+IFR1+MS
14900.000	90.000	179.611	10220.000	47.168	0.000	53.897	-0.000	47.168	0.000	0.000	54.125	42.388	-8.883	MWD+IFR1+MS
15000.000	90.000	179.611	10220.000	47.819	0.000	54.532	-0.000	47.819	0.000	0.000	54.752	42.422	-8.515	MWD+IFR1+MS
15100.000	90.000	179.611	10220.000	48.473	0.000	55.175	-0.000	48.473	0.000	0.000	55.385	42.454	-8.176	MWD+IFR1+MS
15200.000	90.000	179.611	10220.000	49.131	0.000	55.824	-0.000	49.131	0.000	0.000	56.026	42.487	-7.863	MWD+IFR1+MS
15300.000	90.000	179.611	10220.000	49.793	0.000	56.480	-0.000	49.793	0.000	0.000	56.674	42.520	-7.573	MWD+IFR1+MS
15400.000	90.000	179.611	10220.000	50.458	0.000	57.141	-0.000	50.458	0.000	0.000	57.328	42.553	-7.303	MWD+IFR1+MS
15500.000	90.000	179.611	10220.000	51.127	0.000	57.809	-0.000	51.127	0.000	0.000	57.989	42.585	-7.052	MWD+IFR1+MS
15600.000	90.000	179.611	10220.000	51.799	0.000	58.482	-0.000	51.799	0.000	0.000	58.655	42.618	-6.818	MWD+IFR1+MS
15700.000	90.000	179.611	10220.000	52.474	0.000	59.160	-0.000	52.474	0.000	0.000	59.328	42.651	-6.599	MWD+IFR1+MS
15800.000	90.000	179.611	10220.000	53.152	0.000	59.844	-0.000	53.152	0.000	0.000	60.006	42.684	-6.394	MWD+IFR1+MS
15900.000	90.000	179.611	10220.000	53.833	0.000	60.532	-0.000	53.833	0.000	0.000	60.690	42.718	-6.202	MWD+IFR1+MS

16000.000	90.000	179.611	10220.000	54.517	0.000	61.226	-0.000	54.517	0.000	0.000	61.379	42.751	-6.021	MWD+IFR1+MS
16100.000	90.000	179.611	10220.000	55.204	0.000	61.925	-0.000	55.204	0.000	0.000	62.072	42.785	-5.850	MWD+IFR1+MS
16200.000	90.000	179.611	10220.000	55.893	0.000	62.628	-0.000	55.893	0.000	0.000	62.771	42.819	-5.689	MWD+IFR1+MS
16300.000	90.000	179.611	10220.000	56.584	0.000	63.335	-0.000	56.584	0.000	0.000	63.474	42.854	-5.537	MWD+IFR1+MS
16400.000	90.000	179.611	10220.000	57.278	0.000	64.047	-0.000	57.278	0.000	0.000	64.182	42.889	-5.393	MWD+IFR1+MS
16500.000	90.000	179.611	10220.000	57.975	0.000	64.763	-0.000	57.975	0.000	0.000	64.895	42.924	-5.257	MWD+IFR1+MS
16600.000	90.000	179.611	10220.000	58.673	0.000	65.483	-0.000	58.673	0.000	0.000	65.611	42.959	-5.128	MWD+IFR1+MS
16700.000	90.000	179.611	10220.000	59.374	0.000	66.207	-0.000	59.374	0.000	0.000	66.331	42.995	-5.005	MWD+IFR1+MS
16800.000	90.000	179.611	10220.000	60.077	0.000	66.934	-0.000	60.077	0.000	0.000	67.056	43.031	-4.888	MWD+IFR1+MS
16900.000	90.000	179.611	10220.000	60.781	0.000	67.666	-0.000	60.781	0.000	0.000	67.784	43.068	-4.777	MWD+IFR1+MS
17000.000	90.000	179.611	10220.000	61.488	0.000	68.400	-0.000	61.488	0.000	0.000	68.516	43.104	-4.671	MWD+IFR1+MS
17100.000	90.000	179.611	10220.000	62.197	0.000	69.138	-0.000	62.197	0.000	0.000	69.251	43.142	-4.570	MWD+IFR1+MS
17200.000	90.000	179.611	10220.000	62.907	0.000	69.880	-0.000	62.907	0.000	0.000	69.990	43.179	-4.473	MWD+IFR1+MS
17300.000	90.000	179.611	10220.000	63.619	0.000	70.625	-0.000	63.619	0.000	0.000	70.732	43.217	-4.380	MWD+IFR1+MS
17400.000	90.000	179.611	10220.000	64.333	0.000	71.372	-0.000	64.333	0.000	0.000	71.477	43.256	-4.292	MWD+IFR1+MS
17500.000	90.000	179.611	10220.000	65.049	0.000	72.123	-0.000	65.049	0.000	0.000	72.226	43.295	-4.207	MWD+IFR1+MS
17600.000	90.000	179.611	10220.000	65.766	0.000	72.877	-0.000	65.766	0.000	0.000	72.977	43.334	-4.126	MWD+IFR1+MS
17700.000	90.000	179.611	10220.000	66.484	0.000	73.633	-0.000	66.484	0.000	0.000	73.731	43.373	-4.048	MWD+IFR1+MS
17800.000	90.000	179.611	10220.000	67.204	0.000	74.392	-0.000	67.204	0.000	0.000	74.489	43.413	-3.973	MWD+IFR1+MS
17900.000	90.000	179.611	10220.000	67.926	0.000	75.154	-0.000	67.926	0.000	0.000	75.248	43.454	-3.901	MWD+IFR1+MS
18000.000	90.000	179.611	10220.000	68.649	0.000	75.919	-0.000	68.649	0.000	0.000	76.011	43.495	-3.832	MWD+IFR1+MS
18100.000	90.000	179.611	10220.000	69.373	0.000	76.686	-0.000	69.373	0.000	0.000	76.776	43.536	-3.765	MWD+IFR1+MS
18200.000	90.000	179.611	10220.000	70.098	0.000	77.455	-0.000	70.098	0.000	0.000	77.544	43.578	-3.701	MWD+IFR1+MS
18300.000	90.000	179.611	10220.000	70.825	0.000	78.227	-0.000	70.825	0.000	0.000	78.314	43.620	-3.639	MWD+IFR1+MS
18400.000	90.000	179.611	10220.000	71.553	0.000	79.001	-0.000	71.553	0.000	0.000	79.086	43.663	-3.580	MWD+IFR1+MS
18500.000	90.000	179.611	10220.000	72.282	0.000	79.777	-0.000	72.282	0.000	0.000	79.860	43.706	-3.522	MWD+IFR1+MS
18600.000	90.000	179.611	10220.000	73.013	0.000	80.555	-0.000	73.013	0.000	0.000	80.637	43.749	-3.467	MWD+IFR1+MS
18700.000	90.000	179.611	10220.000	73.744	0.000	81.336	-0.000	73.744	0.000	0.000	81.416	43.793	-3.413	MWD+IFR1+MS
18800.000	90.000	179.611	10220.000	74.477	0.000	82.118	-0.000	74.477	0.000	0.000	82.197	43.838	-3.361	MWD+IFR1+MS
18900.000	90.000	179.611	10220.000	75.210	0.000	82.902	-0.000	75.210	0.000	0.000	82.980	43.883	-3.311	MWD+IFR1+MS
19000.000	90.000	179.611	10220.000	75.945	0.000	83.689	-0.000	75.945	0.000	0.000	83.765	43.928	-3.263	MWD+IFR1+MS
19100.000	90.000	179.611	10220.000	76.681	0.000	84.477	-0.000	76.681	0.000	0.000	84.552	43.973	-3.216	MWD+IFR1+MS
19200.000	90.000	179.611	10220.000	77.417	0.000	85.267	-0.000	77.417	0.000	0.000	85.341	44.020	-3.170	MWD+IFR1+MS

19300.000	90.000	179.611	10220.000	78.155	0.000	86.059	-0.000	78.155	0.000	0.000	86.131	44.066	-3.126	MWD+IFR1+MS
19400.000	90.000	179.611	10220.000	78.893	0.000	86.852	-0.000	78.893	0.000	0.000	86.924	44.113	-3.083	MWD+IFR1+MS
19500.000	90.000	179.611	10220.000	79.633	0.000	87.647	-0.000	79.633	0.000	0.000	87.717	44.161	-3.042	MWD+IFR1+MS
19600.000	90.000	179.611	10220.000	80.373	0.000	88.444	-0.000	80.373	0.000	0.000	88.513	44.208	-3.002	MWD+IFR1+MS
19700.000	90.000	179.611	10220.000	81.114	0.000	89.242	-0.000	81.114	0.000	0.000	89.310	44.257	-2.963	MWD+IFR1+MS
19800.000	90.000	179.611	10220.000	81.856	0.000	90.042	-0.000	81.856	0.000	0.000	90.109	44.306	-2.925	MWD+IFR1+MS
19900.000	90.000	179.611	10220.000	82.598	0.000	90.844	-0.000	82.598	0.000	0.000	90.909	44.355	-2.888	MWD+IFR1+MS
20000.000	90.000	179.611	10220.000	83.342	0.000	91.646	-0.000	83.342	0.000	0.000	91.711	44.404	-2.852	MWD+IFR1+MS
20100.000	90.000	179.611	10220.000	84.086	0.000	92.451	-0.000	84.086	0.000	0.000	92.515	44.454	-2.817	MWD+IFR1+MS
20200.000	90.000	179.611	10220.000	84.831	0.000	93.256	-0.000	84.831	0.000	0.000	93.319	44.505	-2.783	MWD+IFR1+MS
20300.000	90.000	179.611	10220.000	85.577	0.000	94.063	-0.000	85.577	0.000	0.000	94.125	44.556	-2.750	MWD+IFR1+MS
20400.000	90.000	179.611	10220.000	86.323	0.000	94.871	-0.000	86.323	0.000	0.000	94.933	44.607	-2.718	MWD+IFR1+MS
20500.000	90.000	179.611	10220.000	87.070	0.000	95.681	-0.000	87.070	0.000	0.000	95.741	44.659	-2.687	MWD+IFR1+MS
20600.000	90.000	179.611	10220.000	87.818	0.000	96.492	-0.000	87.818	0.000	0.000	96.551	44.711	-2.657	MWD+IFR1+MS
20700.000	90.000	179.611	10220.000	88.566	0.000	97.304	-0.000	88.566	0.000	0.000	97.362	44.764	-2.627	MWD+IFR1+MS
20800.000	90.000	179.611	10220.000	89.315	0.000	98.117	-0.000	89.315	0.000	0.000	98.175	44.817	-2.598	MWD+IFR1+MS
20900.000	90.000	179.611	10220.000	90.064	0.000	98.931	-0.000	90.064	0.000	0.000	98.988	44.871	-2.570	MWD+IFR1+MS
21000.000	90.000	179.611	10220.000	90.814	0.000	99.747	-0.000	90.814	0.000	0.000	99.803	44.925	-2.542	MWD+IFR1+MS
21097.314	90.000	179.611	10220.000	91.545	0.000	100.541	-0.000	91.545	0.000	0.000	100.597	44.978	-2.516	MWD+IFR1+MS
21100.000	90.000	179.611	10220.000	91.565	0.000	100.563	-0.000	91.565	0.000	0.000	100.619	44.979	-2.516	MWD+IFR1+MS
21147.303	90.000	179.611	10220.000	91.919	0.000	100.948	-0.000	91.919	0.000	0.000	101.003	45.005	-2.503	MWD+IFR1+MS

## Plan Targets

Poker Lake Unit 18 TWR 311H

Target Name	Measured Depth (ft)	Grid Northing (ft)	Grid Easting (ft)	TVD MSL (ft)	Target Shape
FTP 4	10739.67	440388.50	661362.37	6695.00	RECTANGLE
LTP 4	21104.31	430024.09	661432.67	6695.00	RECTANGLE
BHL 4	21154.30	429974.09	661433.00	6695.00	RECTANGLE



ALL INFORMATION CONTAINED HEREIN IS THE PROPERTY OF CACTUS WELLHEAD, LLC. REPRODUCTION, DISCLOSURE, OR USE THEREOF IS PERMISSIBLE ONLY AS PROVIDED BY CONTRACT OR AS EXPRESSLY AUTHORIZED BY CACTUS WELLHEAD, LLC.



ALL DIMENSIONS APPROXIMATE

CACTUS WELLHEAD LLC			
20" x 9-5/8" x 7-5/8" x 5-1/2" MBU-T-CFL-R-DBLO Wellhead With 11" 10M x 7-1/16" 15M CTH-DBLHPS Tubing Head And 9-5/8", 7-5/8" & 5-1/2" Pin Bottom Mandrel Casing Hangers			
XTO ENERGY INC DELAWARE BASIN		DRAWN VJK 31MAR22	
		APPRV	
		DRAWING NO. HBE0000479	

Sante Fe Main Office  
Phone: (505) 476-3441

General Information  
Phone: (505) 629-6116

Online Phone Directory  
<https://www.emnrd.nm.gov/ocd/contact-us>

State of New Mexico  
Energy, Minerals and Natural Resources  
Oil Conservation Division  
1220 S. St Francis Dr.  
Santa Fe, NM 87505

CONDITIONS

Action 281449

CONDITIONS

Operator: XTO PERMIAN OPERATING LLC. 6401 HOLIDAY HILL ROAD MIDLAND, TX 79707	OGRID: 373075
	Action Number: 281449
	Action Type: [C-103] NOI Change of Plans (C-103A)

CONDITIONS

Created By	Condition	Condition Date
dmccclure	NSL not required due to the change of HSU approved in Application ID: 410874	5/8/2025
dmccclure	If cement is not circulated to surface during cementing operations, a Cement Bond Log (CBL) is required.	5/8/2025