

U.S. Department of the Interior  
BUREAU OF LAND MANAGEMENT

**Well Name:** HANCOCK FEDERAL

**Well Location:** T27N / R11W / SEC 24 /  
NENE / 36.565582 / -107.949081

**County or Parish/State:** SAN  
JUAN / NM

**Well Number:** 3

**Type of Well:** CONVENTIONAL GAS  
WELL

**Allottee or Tribe Name:**

**Lease Number:** NMSF078094

**Unit or CA Name:** HANCOCK  
FEDERAL

**Unit or CA Number:**  
NMNM73709

**US Well Number:** 3004506425

**Operator:** HILCORP ENERGY  
COMPANY

### Subsequent Report

**Sundry ID:** 2851502

**Type of Submission:** Subsequent Report

**Type of Action:** Plug and Abandonment

**Date Sundry Submitted:** 05/07/2025

**Time Sundry Submitted:** 06:32

**Date Operation Actually Began:** 04/30/2025

**Actual Procedure:** Hilcorp Energy Company plugged and abandoned the subject well on 04/30/2025 per the attached daily reports & schematic.

### SR Attachments

#### Actual Procedure

Hancock\_Federal\_3\_SR\_P\_A\_BLM\_Submitted\_20250507063228.pdf

Well Name: HANCOCK FEDERAL

Well Location: T27N / R11W / SEC 24 /  
NENE / 36.565582 / -107.949081County or Parish/State: SAN  
JUAN / NM

Well Number: 3

Type of Well: CONVENTIONAL GAS  
WELL

Allottee or Tribe Name:

Lease Number: NMSF078094

Unit or CA Name: HANCOCK  
FEDERALUnit or CA Number:  
NMNM73709

US Well Number: 3004506425

Operator: HILCORP ENERGY  
COMPANY**Operator**

I certify that the foregoing is true and correct. Title 18 U.S.C. Section 1001 and Title 43 U.S.C. Section 1212, make it a crime for any person knowingly and willfully to make to any department or agency of the United States any false, fictitious or fraudulent statements or representations as to any matter within its jurisdiction. Electronic submission of Sundry Notices through this system satisfies regulations requiring a

Operator Electronic Signature: PRISCILLA SHORTY

Signed on: MAY 07, 2025 06:32 AM

Name: HILCORP ENERGY COMPANY

Title: Regulatory Technician

Street Address: 382 ROAD 3100

City: AZTEC

State: NM

Phone: (505) 324-5188

Email address: PSHORTY@HILCORP.COM

**Field**

Representative Name:

Street Address:

City:

State:

Zip:

Phone:

Email address:

**BLM Point of Contact**

BLM POC Name: MATTHEW H KADE

BLM POC Title: Petroleum Engineer

BLM POC Phone: 5055647736

BLM POC Email Address: MKADE@BLM.GOV

Disposition: Accepted

Disposition Date: 05/08/2025

Signature: Matthew Kade

**HANCOCK FEDERAL 3****30.045.06425****PLUG AND ABANDONMENT**

**4/14/2025** - RIG MOVE ALL EQUIP TO LOC. LOTO, SPOT EQUIP. RU RIG & CMT EQUIP. CK PSI: TBG-5#. CSG-10#, BH-0#, BDW 1 MIN. FT BOP, ND WH. NU BOP. RU RF & TBG EQUIP. SIW, SDFN.

**4/15/2025** - CK PSI: TBG-0#, CSG-10#, BH-0# BDW 1 MIN. JSA, RU WSI. PSI TEST BOP. TEST OK. WORK DOG PINS FREE. PULL HANGER. BEGIN LD TBG, LD 109 JTS 1.5" J55 TBG. TALLY, RABBIT & PUP WS. RIH WITH 4.5" OS. PUMP 20 BBLS FW. CIRC 20 BBLS TEMPAC PKR FLUID. LATCH FISH @ 3637.35'. JSA. RU DRAKE WL. RIH WITH 1.44' GR. TAG @ 1332'. TOO H LD GR. RD WL. UNLATCH TOF. TOO H FOUND BAD JT, LD JT. SIW, SDFN.

**4/16/2024** - CK PSI; TBG-0#, CSG-10#, BH-0#. BDW 1 MIN. TIH. LATCH FISH @ 3637.35'. PULL FISH TO STRING WEIGHT @ 7000#. JSA, RU DRAKE WL. RIH WITH 1.44" GR. TAG @ 3945'. TOO H LD GR. ADD ANOTHER SINKER BAR. TAG @ 3945' (INSIDE 1.5" TBG). TOO H LD GR. REHEAD TO 1" WL TOOLS. RIH WITH 1.39" GR. TAG @ 3945'. PULL FISH STRING WEIGHT TO 12,000#. UNABLE TO GET PAST 3945'. TOO H. LD GR. RD WL. WORK TBG @ 29,000# - 19,000# LBS ATTEMPTING MANUAL BACK OFF. UNABLE TO BACK OFF 1.5" TBG, ALL ROTATIONS WERE GIVEN BACK. TOO H INSPECT OS. TIH RE-TIGHT ALL TBG CONNECTIONS. LATCH FISH @ 3637'. PULL 8000# LBS OVER 2 3/8" STRING WEIGHT. RU WL. RIH W GR TO 3945'. TOO H LD GR RIH W/CHEMICAL CUT. CUT TBG @ 3926'. TOO H LD CC. RD WL. TOO H W/ 12 STANDS. SIW, SDFN.

**4/17/2025** - CK PSI: TBG-0#, CSG-10#, BH-0#, BDW 1 MIN. TOO H W/ 2 3/8" TBG. LD 9 JTS OF 1.5" TBG (FISH 306'). TALLY & PU WASH OVER PIPE, 3 1/8" DC & OS. TIH TAG TOF @ 3929'. RUN WP TO 4138'. TOO H. TIH W/RATCHET STYLE TBG CUTTER. RU PWR SWIVEL. PUP W/PS. WASH OVER 207' OF 1.5" TBG. PUMP 30 BBLS FW TO CLEAN TOF. WORK PWR SWL. CUT TBG @ +/- 4120' . LD TWO JTS W/PS. RD PS. LD 6 JTS. SIW SDWE.

**4/21/2025** - CK PSI: TBG-0#, CSG-10#, BH-0#, BDW 1 MIN. TOO H, LD FISH. (191'). STAND BACK FISHING TOOLS. TIH W/OS. LATCH FISH @ 4120'. JSA. RU DRAKE WL. RIH WITH 1.44" GR. TAGGED @ 4115'. LD GR. XOVER TO 1" WL EQUIP. RIH 1.359" BARS. TAGGED @ 4900'. LD BARS. RIH W/ 1.39" JC. TAG @ 4145'. RD WL. UNABLE TO BACK OFF TBG. RU WL. RIH WITH RATTLE SHOT. TAG @ 4154'. LD RS. RD WL. WORK FISH FREE. TOO H. SDFN.

**4/22/2025** - CK PSI: TBG-0#, CSG-10#, BH-0#. BDW 1 MIN. TOO H, LD OS. TIH W/DC, WO & TBG CUTTER. RU PWR SWVL, WO FISH & CUT TBG @ 4223.57'. RD PS. TOO H LD 1.5" FISH. (102.74'). TIH W/OS. LATCH FISH @ 4223'. PULL 3,000# OVER 1.5" FISH. JSA. RU DRAKE WL. RIH WITH 1.35" GR (DUE TO NEW FISH TOP) TAG @ 4223'. LOAD TBG W/BBLS FW. ATTEMPT RATE OR CIRC. NO CIRC / RATE. (800# PSI) RIH W/ 1" GR. TAG @ 4868' . LD GR. RIH W/ SPLIT SHOT. SPLIT TBG @ 4839' (COLLAR). LD SS. RD WL. WORK TBG FREE. TOO H W/ 12 STANDS. SIW, SDFN.

## HANCOCK FEDERAL 3

30.045.06425

## PLUG AND ABANDONMENT

**4/23/2025** - CK PSI: TBG-0@, CSG-10#, BH-0#. BDW 1 MIN. TOO H. LD FISH (18.5 JTS 1.5", 619'). TIH W/SKIRT MILL. TAG FISH @ 4841.99'. RU PWR SWVL. EST CIRC W/ 8 BBLS OF FW. MILL 1.3' OF 1.5" TBG. CIRC WELL BOTTOMS UP W/ 22 BBLS FW. RD PS. LD 11 JTS. TOO H. TALLY & PU 4 EXTRA JTS OF WO PIPE (349.60' TOTAL WO). TIH TAG TOF 4843'. RU PS. EST REVERSE CIRC W/3 BBLS FW. TAG FILL @ 4875'. C/O FILL TO 4995'. REV CIRC WELL BOTTOMS UP WITH 25 BBLS FW. LD 5 JTS W/PS, RD PS. TOO H W/ 22 STNDS. SDFN.

**4/24/2025** - CK PSI: TBG-5#, CSG-10#, BH-0#. BDW 1 MIN. TIH TAG TOF @ 4943'. RU PS. UNABLE TO EST REVERSE CIRC (PUMP 25 BBLS FW). EST CIRC PUMPING DOWN TBG OUT CSG. (25 BBLS FW). BEGIN WO. WO 11 JTS. END OF WO @ 5192'. CIRC WELL BOTTOMS UP TWICE. LD 3 JTS W/PS. RD PS. TOO H. TIH W/ EXT TBG CUTTER. RU PS. PU 11 JTS W/PS. RUN TBG CUTTER TO 5172'. WORK TBG W/PS, CUT TBG @ 5170'. LD 4 JTS W/PS. RD PS. TOO H. LD FISH.( 9.5,1.5" JTS. 311.6')(TOP 3 JTS PLUGGED) **HEC ENGINEER SENT AN EMAIL DOCUMENTING APPROVAL FROM BLM AND NMOC D TO LEAVE THE FISH IN HOLE AND SET CIRC @ 5100'. CMT WILL BE PUMPED DOWN TO PERFS AND ALSO 150' ON TOP OF CIRC. CBL WILL BE RAN. SIW, SDFN.**

**4/25/2025** -CK PSI: TBG-0#, CSG-10#, BH-0#. BDW 1 MIN. TIH W/ WO & DC. LD & RD ALL FISHING TOOLS & EQUIP. TIH W/ 4.5" CR. TAG BAD CSG @ 4450'. EST CIRC W/ 3 BBLS, PUMP 15 TOTAL. WORK CR THRU BAD CSG. UNABLE TO SET CR. CIRC WELL WITH 40 BBLS FW. S&R CR @ 5100'. CIRC WELL W/ 35BBLS. ( NO PSI TEST ATTEMPT). NO RATE EST BELOW CR, HELD PSI @ 1200# PSI. **PLUG #1 (2 3/8" X 4.5") M&P 14 SKS CLASS G. 15.8PPG, 1.15YIELD, 2.86BLSRY, 1.6MIX. 18.6 DIS.** LD TOC. ATTEMPT REVERSE TOC. UNABLE TO REVERSE OUT. WORK TBG FREE. TOO H. JSA. RU DRAKE WL. RIH W/ CBL TOOL. TAG @ 4697'. (**MONTY GOMEZ,BLM REP, ON LOCATION APPROVED CBL DEPTH**) LOG WELL TO SURF. RD WL. CBL SHOWED TOC BELOW 4686' (LOWEST CBL COULD GO), AND DV TOOL BOC 1974' TO TOC 1520'. TIH W/ TS TO 3000'. SIW, SDFN.

**4/28/2025** - CK PSI; TBG-0#, CSG-0#, BH-0#, BDW 0 MIN. TIH **TAG TOC @ 4793'. (MONTY GOMEZ, BLM REP, ON LOCATION APPROVED TAG).** TOO H LD TS. TIH WITH 4.5" CR. S&R CR @ 4400'. EST CIRC W/ 3 BBLS FW. ATTEMPT PSI TEST. NO TEST. EST A RATE OF 2.0BPM @ 400# PSI. **PLUG #2 M&P 44 SKS CLASS G, 12 ABOVE / 32 BELOW. 15.8PPG, 1.15 YIELD, 9BLSRY, 5.2MIX. 16DIS.** LD TOC REVERSE OUT. TOO H LD STINGER. WOC. TIH **TAG TOC @ 4203'.** LD TBG TO PLUG #3. TOO H LD TS. JSA, RU DRAKE WL. RIH W/ TG. PERF 4 HOLES @ 2831'. LD TG. RD WL. TIH W/ 4.5" CR. S&R CR @ 2781'. EST CIRC W 4 BBLS FW. ATTEMPT PSI TEST. NO TEST. **PLUG #3 (513')( 2 3/8"X4.5"X6.75"OH) 40 ABOVE / 78 BELOW. M&P 118 SKS CLASS G, 15.8PPG, 1.15YIELD, 24BLSRY, 14MIX, 8.6DIS.** LD TOC. REVERSE OUT. TOO H LD STINGER. SIW, SDFN.

HANCOCK FEDERAL 3

30.045.06425

PLUG AND ABANDONMENT

**4/29/2025** – CK PSI; TBG-0#, CSG-0#, BH-0#, BDW 0 MIN. TIH AND **TAG TOC@2781'**, (NO CMT TO CICR), LOAD CSG W/2.5 BBL, ATTEMPT PT, DIDN'T HOLD PRESS, **SPOT PLUG#3c AGAIN, 50 SX (CLASS G CMT-15.8 PPG) FROM 2781'**, TOH W/TBG, WOC 4 HRS, TIH **TAG TOC@2105'**, PT CSG TO 850 PSI, HELD GOOD, **SPOT INSIDE PLUG#4 FROM 2024' TO 1758' (21SX-5.5 BBL SLRY-3.2 BBL FW-6.3 BBL DISP) LD 23 JTS, SPOT INSIDE PLUG#5 F/1397' TO 1247' (12 SX-1.4 BBL FW- 4.8 BBL DISP)**, TOH W/TBG, MIRU DRAKE WIRELINE, SHOT 4 HOLES P/SF AT 986', RD WIRELINE, TIH W/4 1/2" CICR (HEC), SET IT@936', INJ RATE 2 BBL P/MIN NO PRESS, M&P **INSIDE/OUTSIDE PLUG#6 (SPOT 65 SX IN 4.5 CSG X 6 3/4" OPEN HOLE- EST TOC@446' & BOC@986' – 4SX BELOW CICR), STING OUT, (SPOT 35 SX ON TOP OF CICR@986' - TOC@496')**, TOH W/TBG, SISW, SDFN. (BLM REP- MONTY GOMEZ ON LOCAITON)

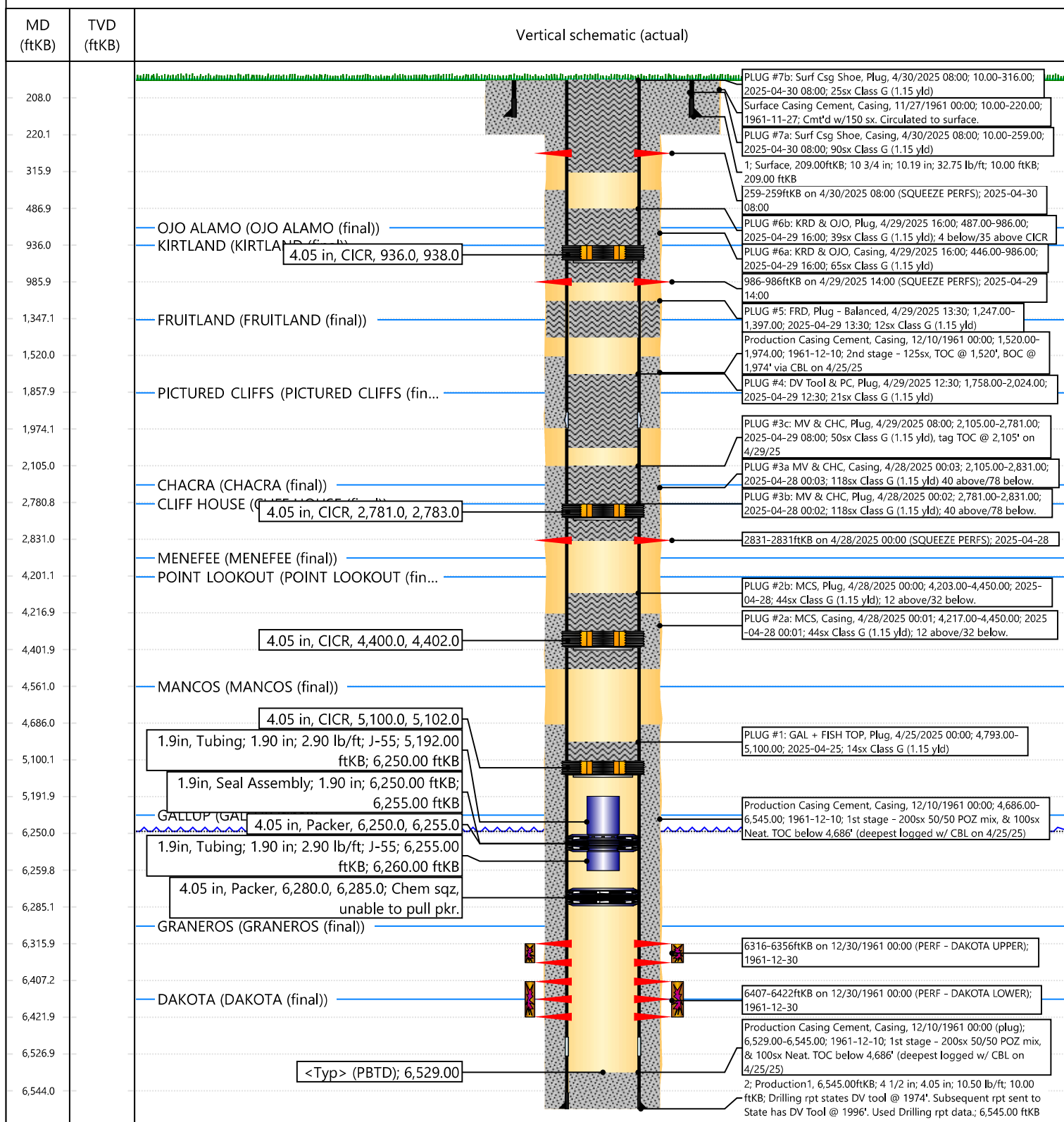
**4/30/2025** – CK PSI; TBG-0#, CSG-0#, BH-0#, BDW 0 MIN. TIH AND **TAG TOC@478'**, TOH W/TBG, MIRU DRAKE WIRELINE PERF AT 259'- 4 SHOTS P/SF, RD WL, LOAD AND CIRCULATE UP BH. TIH W/10 JTS TO 316', **CIRCULATED (PLUG #7) CMT IN 4 1/2" CSG FROM 316' TO SURFACE AND IN BH FROM 259' TO SURFACE (116 SX OF CLASS G CMT-15.8 PPG- 32.7 BLSRY- 19.2 MIX)**, LD 10 JTS, ND BOP, CUT OFF WELL HEAD AND WELD ON WM AT 36\*34'12"N - 107\*57'0", CSG AND BH FULL TO THE TOP W/CMT, TOP OFF WELL W/ CLASS G CMT- 15.8 PPG-1.15 = 13 SX- 2.6BLSRY- 1.5MIX, RD RR. **BLM REP- MONTY GOMEZ ON LOCATION.**

**WELL WAS PLUGGED AND ABANDONED ON 4/30/2025.**



API / UWI 3004506425	Surface Legal Location 024-027N-011W-A	Field Name BASIN DAKOTA (PRORATED GAS)	Route 0604	State/Province NEW MEXICO	Well Configuration Type VERTICAL
Ground Elevation (ft) 6,114.00	Original KB/RT Elevation (ft) 6,124.00	Tubing Hanger Elevation (ft)	RKB to GL (ft) 10.00	KB-Casing Flange Distance (ft)	KB-Tubing Hanger Distance (ft)
<b>Tubing Strings</b>					
Run Date 3/25/1967 04:01	Set Depth (ftKB) 6,260.00	String Max Nominal OD (in) 1.9	String Min Nominal ID (in) 1.61	Weight/Length (lb/ft) 2.90	Original Spud Date 11/27/1961 00:00

Original Hole, HANCOCK FEDERAL 3 [VERTICAL]





**Priscilla Shorty**

---

**From:** Kuehling, Monica, EMNRD <monica.kuehling@emnrd.nm.gov>  
**Sent:** Thursday, April 24, 2025 3:03 PM  
**To:** Kade, Matthew H; Joe Zimmerman; Rennick, Kenneth G  
**Cc:** Farmington Regulatory Techs; Clay Padgett; John LaMond; Lee Murphy; Oscar Sanchez - (C); Gomez, Monty J; Lucero, Virgil S  
**Subject:** RE: [EXTERNAL] P&A Revision Request for Hilcorp's HANCOCK FEDERAL 3 (API # 3004506425)

**CAUTION:** External sender. DO NOT open links or attachments from UNKNOWN senders.

NMOCD approves below –

Thank you

Monica Kuehling  
Compliance Officer Supervisor  
Deputy Oil and Gas Inspector  
New Mexico Oil Conservation Division  
North District  
Cell Phone: 505-320-0243  
Email - monica.kuehling@emnrd.nm.gov

---

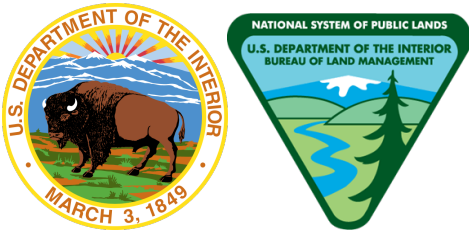
**From:** Kade, Matthew H <mkade@blm.gov>  
**Sent:** Thursday, April 24, 2025 2:52 PM  
**To:** Joe Zimmerman <Joseph.Zimmerman@hilcorp.com>; Kuehling, Monica, EMNRD <monica.kuehling@emnrd.nm.gov>; Rennick, Kenneth G <krennick@blm.gov>  
**Cc:** Farmington Regulatory Techs <FarmingtonRegulatoryTechs@hilcorp.com>; Clay Padgett <cpadgett@hilcorp.com>; John LaMond <jlamond@hilcorp.com>; Lee Murphy <lmurphy@hilcorp.com>; Oscar Sanchez - (C) <Oscar.Sanchez@hilcorp.com>; Gomez, Monty J <mgomez@blm.gov>; Lucero, Virgil S <vlucero@blm.gov>  
**Subject:** Re: [EXTERNAL] P&A Revision Request for Hilcorp's HANCOCK FEDERAL 3 (API # 3004506425)

The BLM approves of the change to procedure.

Thanks,

**Matthew Kade**  
*Petroleum Engineer* | Bureau of Land Management

Farmington Field Office | 6251 College Blvd., Suite A / Farmington, NM 87402  
Office: 505-564-7736




---

**From:** Joe Zimmerman <[Joseph.Zimmerman@hilcorp.com](mailto:Joseph.Zimmerman@hilcorp.com)>

**Sent:** Thursday, April 24, 2025 2:45 PM

**To:** Kuehling, Monica, EMNRD <[monica.kuehling@emnrd.nm.gov](mailto:monica.kuehling@emnrd.nm.gov)>; Rennick, Kenneth G <[krennick@blm.gov](mailto:krennick@blm.gov)>; Kade, Matthew H <[mkade@blm.gov](mailto:mkade@blm.gov)>

**Cc:** Farmington Regulatory Techs <[FarmingtonRegulatoryTechs@hilcorp.com](mailto:FarmingtonRegulatoryTechs@hilcorp.com)>; Clay Padgett <[cpadgett@hilcorp.com](mailto:cpadgett@hilcorp.com)>; John LaMond <[jlamond@hilcorp.com](mailto:jlamond@hilcorp.com)>; Lee Murphy <[lmurphy@hilcorp.com](mailto:lmurphy@hilcorp.com)>; Oscar Sanchez - (C) <[Oscar.Sanchez@hilcorp.com](mailto:Oscar.Sanchez@hilcorp.com)>

**Subject:** RE: [EXTERNAL] P&A Revision Request for Hilcorp's HANCOCK FEDERAL 3 (API # 3004506425)

Good afternoon, Matthew & Monica,

Per our conversation, we will make the below changes to the procedure due to a likely casing failure, fill, and poor tubing conditions severely hampering our ability to retrieve any more of the fish and get deeper into the well.

- Set a CICR at 5,100'. Attempt to pump the equivalent volume of cement down to the perfs (3.7 bbls down tubing).
  - We will then sting out and pump 150' of cement on top of the CICR.
  - WOC and tag. Attempt to pressure test and run CBL.
- If able to pressure test, we will continue forward with the prior approved procedure from this point.

Please let me know if there are any questions/concerns.

Thank you,

- Joe Z.

---

**From:** Kuehling, Monica, EMNRD <[monica.kuehling@emnrd.nm.gov](mailto:monica.kuehling@emnrd.nm.gov)>

**Sent:** Wednesday, October 9, 2024 5:08 PM

**To:** Rennick, Kenneth G <[krennick@blm.gov](mailto:krennick@blm.gov)>; John LaMond <[jlamond@hilcorp.com](mailto:jlamond@hilcorp.com)>; Kade, Matthew H <[mkade@blm.gov](mailto:mkade@blm.gov)>

**Cc:** Farmington Regulatory Techs <[FarmingtonRegulatoryTechs@hilcorp.com](mailto:FarmingtonRegulatoryTechs@hilcorp.com)>; Clay Padgett <[cpadgett@hilcorp.com](mailto:cpadgett@hilcorp.com)>; John LaMond <[jlamond@hilcorp.com](mailto:jlamond@hilcorp.com)>; Lee Murphy <[lmurphy@hilcorp.com](mailto:lmurphy@hilcorp.com)>; Rustin Mikeska <[rmikeska@hilcorp.com](mailto:rmikeska@hilcorp.com)>; Matt Gustamantes - (C) <[Matt.Gustamantes@hilcorp.com](mailto:Matt.Gustamantes@hilcorp.com)>

**Subject:** RE: [EXTERNAL] P&A Revision Request for Hilcorp's HANCOCK FEDERAL 3 (API # 3004506425)

**CAUTION:** External sender. DO NOT open links or attachments from UNKNOWN senders.

NMOCD approves below

Thank you



Monica Kuehling  
Compliance Officer Supervisor  
Deputy Oil and Gas Inspector  
New Mexico Oil Conservation Division  
North District  
Cell Phone: 505-320-0243  
Email - [monica.kuehling@emnrd.nm.gov](mailto:monica.kuehling@emnrd.nm.gov)

---

**From:** Rennick, Kenneth G <[krennick@blm.gov](mailto:krennick@blm.gov)>  
**Sent:** Wednesday, October 9, 2024 4:02 PM  
**To:** John LaMond <[jlamond@hilcorp.com](mailto:jlamond@hilcorp.com)>; Kuehling, Monica, EMNRD <[monica.kuehling@emnrd.nm.gov](mailto:monica.kuehling@emnrd.nm.gov)>; Kade, Matthew H <[mkade@blm.gov](mailto:mkade@blm.gov)>  
**Cc:** Farmington Regulatory Techs <[FarmingtonRegulatoryTechs@hilcorp.com](mailto:FarmingtonRegulatoryTechs@hilcorp.com)>; Clay Padgett <[cpadgett@hilcorp.com](mailto:cpadgett@hilcorp.com)>; John LaMond <[jlamond@hilcorp.com](mailto:jlamond@hilcorp.com)>; Lee Murphy <[lmurphy@hilcorp.com](mailto:lmurphy@hilcorp.com)>; Rustin Mikeska <[rmikeska@hilcorp.com](mailto:rmikeska@hilcorp.com)>; Matt Gustamantes - (C) <[Matt.Gustamantes@hilcorp.com](mailto:Matt.Gustamantes@hilcorp.com)>  
**Subject:** Re: [EXTERNAL] P&A Revision Request for Hilcorp's HANCOCK FEDERAL 3 (API # 3004506425)

The BLM finds the procedure appropriate.

Get [Outlook for iOS](#)

---

**From:** John LaMond <[jlamond@hilcorp.com](mailto:jlamond@hilcorp.com)>  
**Sent:** Wednesday, October 9, 2024 3:58:53 PM  
**To:** Kuehling, Monica, EMNRD <[monica.kuehling@emnrd.nm.gov](mailto:monica.kuehling@emnrd.nm.gov)>; Rennick, Kenneth G <[krennick@blm.gov](mailto:krennick@blm.gov)>; Kade, Matthew H <[mkade@blm.gov](mailto:mkade@blm.gov)>  
**Cc:** Farmington Regulatory Techs <[FarmingtonRegulatoryTechs@hilcorp.com](mailto:FarmingtonRegulatoryTechs@hilcorp.com)>; Clay Padgett <[cpadgett@hilcorp.com](mailto:cpadgett@hilcorp.com)>; John LaMond <[jlamond@hilcorp.com](mailto:jlamond@hilcorp.com)>; Lee Murphy <[lmurphy@hilcorp.com](mailto:lmurphy@hilcorp.com)>; Rustin Mikeska <[rmikeska@hilcorp.com](mailto:rmikeska@hilcorp.com)>; Matt Gustamantes - (C) <[Matt.Gustamantes@hilcorp.com](mailto:Matt.Gustamantes@hilcorp.com)>  
**Subject:** [EXTERNAL] P&A Revision Request for Hilcorp's HANCOCK FEDERAL 3 (API # 3004506425)

**This email has been received from outside of DOI - Use caution before clicking on links, opening attachments, or responding.**

Good afternoon Monica and Kenny,

Hilcorp is planning to work on the HANCOCK FEDERAL 3 (API # 3004506425) P&A in the near future.

I have attached the approved P&A NOI, as well as an updated procedure based on the COAs in the approved NOI.

Based on the COAs, Hilcorp requests the following adjustments to the approved procedure:

- Hilcorp will attempt to release and pull the existing tubing from the packer in the well. If Hilcorp is unable to release the tubing from the packer, the NMOCD and BLM provided verbal approval to cut the tubing ~10' above the packer @ ~6,240'.
- The NMOCD and BLM provided verbal approval to Hilcorp to forego attempting to pull the packer assemblies and proceed with the original proposal of setting a 4-1/2" CICR @ **6,225'** and pumping cement below the CICR as follows:
  - **PLUG #1: 23sx of Class G Cement (15.8 PPG, 1.15 yield); DK Perfs @ 6,407' | DK Top @ 6,414' | GRN Perfs @ 6,316' | GRN Top @ 6,296':**
    - Pump 11sx of cement beneath the 4-1/2" CICR (est. **TOC @ +/- 6,225'** & est. **BOC @ +/- 6,366'**). (~50' below the top perforation)
    - Sting out of CICR, continue pumping a 12 sack balanced cement plug on top of the CICR. (est. **TOC @ +/- 6,075'** & est. **BOC @ +/- 6,225'**). Wait on Cement for 4 hours, tag TOC w/ work string. \*Note cement plug lengths & volumes account for excess.
    - **\*NOTE\* If unable to establish injection below CICR, Hilcorp requests to forego pumping 11sx below CICR and proceed with pumping 12sx on top of CICR.**
- All other plugs have been adjusted according to the BLM formation tops.
- Please see the revised procedure attached and below. The updated Proposed P&A wellbore schematic is also attached.



**HILCORP ENERGY COMPANY**  
**HANCOCK FEDERAL 3**  
**P&A NOI**

API #: 3004506425

**JOB PROCEDURES**

1. Contact NMOCD and BLM (where applicable) 24 hours prior to MIRU.
2. Hold pre-job safety meeting. Verify cathodic is off. Comply with all NMOCD, BLM, and HEC safety and environmental regulations.
3. MIRU service rig and associated equipment; NU and test BOP.
4. Attempt to release tubing from packer & TOO H w/ tubing. **If unable to release tubing from packer, the NMOCD & BLM provided verbal approval ~10' above packer @ 6,240'.**
5. Set a **4-1/2" CICR @ +/- 6,225'** to isolate the **GRN & DK Perfs**. Establish injection.
6. TIH with work string, sting into CICR, establish injection downhole through packer assemblies.
7. **PLUG #1: 23sx of Class G Cement (15.8 PPG, 1.15 yield); DK Perfs @ 6,407' | DK Top @ 6,414' | GRN Perfs @ 6,316' | GRN Top @ 6,296':**  
 Pump 11sx of cement beneath the 4-1/2" CICR (est. **TOC @ +/- 6,225'** & est. **BOC @ +/- 6,366'**). Sting out of CICR, continue pumping a 12 sack balanced cement plug on top of the CICR. (est. **TOC @ +/- 6,075'** & est. **BOC @ +/- 6,225'**). Wait on Cement for 4 hours, tag TOC w/ work string. \*Note cement plug lengths and volumes account for excess. **\*NOTE\* If unable to establish injection below CICR, forego pumping 11sx below CICR and proceed with pumping of CICR.**
8. Load the well as needed. Pressure test the casing above the plug to **560 psig**.
9. RU Wireline. Run CBL. Record Top of Cement. All subsequent plugs below are subject to change pending CBL results.
10. PU & TIH w/ work string to **+/- 5,466'**.
11. **PLUG #2: 12sx of Class G Cement (15.8 PPG, 1.15 yield); GAL Top @ 5,416':**  
 Pump a 12 sack balanced cement plug inside the 4-1/2" casing (est. **TOC @ +/- 5,316'** & est. **BOC @ +/- 5,466'**). \*Note cement plug lengths and volumes account for excess.
12. TOO H w/ work string. TIH & perforate squeeze holes @ **+/- 4,611'**. RIH w/ **4-1/2" CICR** and set CICR @ **+/- 4,561'**. TIH w/ work string & sting into CICR injection.
13. **PLUG #3: 37sx of Class G Cement (15.8 PPG, 1.15 yield); MCS Top @ 4,561':**  
 Pump 25sx of cement in the 4-1/2" casing X 6-3/4" open hole annulus (est. **TOC @ +/- 4,411'** & est. **BOC @ +/- 4,611'**). Pump an additional 4sx of cement in the 4-1/2" CICR (est. **TOC @ +/- 4,561'** & est. **BOC @ +/- 4,611'**). Sting out of retainer, pump an 8 sack balanced cement plug on top of the CICR. (est. **TOC @ +/- 4,461'** & est. **BOC @ +/- 4,561'**). WOC for 4 hrs, tag TOC w/ work string. \*Note cement plug lengths and volumes account for excess.
14. TOO H w/ work string. TIH & perforate squeeze holes @ **+/- 2,831'**. RIH w/ **4-1/2" CICR** and set CICR @ **+/- 2,781'**. TIH w/ work string & sting into CICR injection.
15. **PLUG #4: 118sx of Class G Cement (15.8 PPG, 1.15 yield); MV Top @ 2,781' | CHC Top @ 2,371':**  
 Pump 74sx of cement in the 4-1/2" casing X 6-3/4" open hole annulus (est. **TOC @ +/- 2,219'** & est. **BOC @ +/- 2,831'**). Pump an additional 4sx of cement in the 4-1/2" CICR (est. **TOC @ +/- 2,781'** & est. **BOC @ +/- 2,831'**). Sting out of retainer, pump a 40 sack balanced cement plug on top of the CICR. (est. **TOC @ +/- 2,271'** & est. **BOC @ +/- 2,781'**). WOC for 4 hrs, tag TOC w/ work string. \*Note cement plug lengths and volumes account for excess.
16. POOH w/ work string to **+/- 2,024'**.
17. **PLUG #5: 21sx of Class G Cement (15.8 PPG, 1.15 yield); DV Tool #1 Top @ 1,974' | PC Top @ 1,858':**  
 Pump a 21 sack balanced cement plug inside the 4-1/2" casing (est. **TOC @ +/- 1,758'** & est. **BOC @ +/- 2,024'**). \*Note cement plug lengths & volumes account for excess.
18. POOH w/ work string to **+/- 1,397'**.
19. **PLUG #6: 12sx of Class G Cement (15.8 PPG, 1.15 yield); FRD Top @ 1,347':**  
 Pump an 12 sack balanced cement plug inside the 4-1/2" casing (est. **TOC @ +/- 1,247'** & est. **BOC @ +/- 1,397'**). \*Note cement plug lengths & volumes account for excess.

Do the NMOCD and BLM approve of the revised procedure?

Thanks,

**John LaMond**

Operations Engineer – Technical Services

Hilcorp Energy Company

1111 Travis

Houston, TX 77002

346-237-2210 (Office)

832-754-9692 (Cell)

[jlamond@hilcorp.com](mailto:jlamond@hilcorp.com)

---

The information contained in this email message is confidential and may be legally privileged and is intended only for the use of the individual or entity named above. If you are not an intended recipient or if you have received this message in error, you are hereby notified that any dissemination, distribution, or copy of this email is strictly prohibited. If you have received this email in error, please immediately notify us by return email or telephone if the sender's phone number is listed above, then promptly and permanently delete this message.

While all reasonable care has been taken to avoid the transmission of viruses, it is the responsibility of the recipient to ensure that the onward transmission, opening, or use of this message and any attachments will not adversely affect its systems or data. No responsibility is accepted by the company in this regard and the recipient should carry out such virus and other checks as it considers appropriate.

---

---

The information contained in this email message is confidential and may be legally privileged and is intended only for the use of the individual or entity named above. If you are not an intended recipient or if you have received this message in error, you are hereby notified that any dissemination, distribution, or copy of this email is strictly prohibited. If you have received this email in error, please immediately notify us by return email or telephone if the sender's phone number is listed above, then promptly and permanently delete this message.

While all reasonable care has been taken to avoid the transmission of viruses, it is the responsibility of the recipient to ensure that the onward transmission, opening, or use of this message and any attachments will not adversely affect its systems or data. No responsibility is accepted by the company in this regard and the recipient should carry out such virus and other checks as it considers appropriate.

---

Sante Fe Main Office  
Phone: (505) 476-3441

General Information  
Phone: (505) 629-6116

Online Phone Directory  
<https://www.emnrd.nm.gov/ocd/contact-us>

State of New Mexico  
Energy, Minerals and Natural Resources  
Oil Conservation Division  
1220 S. St Francis Dr.  
Santa Fe, NM 87505

CONDITIONS

Action 460401

CONDITIONS

Operator: HILCORP ENERGY COMPANY 1111 Travis Street Houston, TX 77002	OGRID: 372171
	Action Number: 460401
	Action Type: [C-103] Sub. Plugging (C-103P)

CONDITIONS

Created By	Condition	Condition Date
mkuehling	CBL in log file - well plugged 4/30/2025	5/13/2025