

District I
1625 N. French Dr., Hobbs, NM 88240
District II
811 S. First St., Artesia, NM 88210
District III
1000 Rio Brazos Rd., Aztec, NM 87410
District IV
1220 S. St. Francis Dr., Santa Fe, NM 87505

State of New Mexico
Energy, Minerals & Natural Resources

Form C-104
Revised August 1, 2011

Oil Conservation Division
1220 South St. Francis Dr.
Santa Fe, NM 87505

Submit one copy to appropriate District Office

AMENDED REPORT

I. REQUEST FOR ALLOWABLE AND AUTHORIZATION TO TRANSPORT

¹ Operator name and Address OXY USA INC. P.O. BOX 50250 MIDLAND, TX 79710		² OGRID Number: 16696
		³ Reason for Filing Code/ Effective Date: NW - 04/30/2024
⁴ API Number 30 - 015-47337	⁵ Pool Name PIERCE CROSSING; BONE SPRING, EAST	⁶ Pool Code 96473
⁷ Property Code: 328290	⁸ Property Name: HEADS CC 9-4 FEDERAL COM	⁹ Well Number: 24H

II. ¹⁰ Surface Location

Ul or lot no.	Section	Township	Range	Lot Idn	Feet from the	North/South Line	Feet from the	East/West line	County
O	9	24S	29E		910	SOUTH	1366	EAST	EDDY

¹¹ Bottom Hole Location FTP- 788' FSL 1980' FEL LTP- 174' FNL 1968' FEL

UL or lot no.	Section	Township	Range	Lot Idn	Feet from the	North/South line	Feet from the	East/West line	County
2	4	24S	29E		27	NORTH	1969	EAST	EDDY
¹² Lse Code F	¹³ Producing Method Code : P		¹⁴ Gas Connection Date: 05/02/24		¹⁵ C-129 Permit Number		¹⁶ C-129 Effective Date		¹⁷ C-129 Expiration Date

III. Oil and Gas Transporters

¹⁸ Transporter OGRID	¹⁹ Transporter Name and Address	²⁰ O/G/W
214754	LPC CRUDE OIL, INC.	O
151618	ENTERPRISE FIELD SERVICES LLC	G

IV. Well Completion Data

²¹ Spud Date	²² Ready Date	²³ TD	²⁴ PBSD	²⁵ Perforations	²⁶ DHC, MC
02/01/24	04/30/2024	19415'M 9127'V	19369'M 9127'V	9619-19268'	
²⁷ Hole Size	²⁸ Casing & Tubing Size	²⁹ Depth Set		³⁰ Sacks Cement	
14-3/4"	10-3/4"	644'		1329	
9-7/8"	7.827"	9577'		2196	
6-3/4"	5-1/2"	8418'-19395'		550	
	3-1/2" TBG	8354'		NA	

V. Well Test Data

³¹ Date New Oil	³² Gas Delivery Date	³³ Test Date	³⁴ Test Length	³⁵ Tbg. Pressure	³⁶ Csg. Pressure
05/02/24	05/02/24	05/30/24	24 HRS		516
³⁷ Choke Size	³⁸ Oil	³⁹ Water	⁴⁰ Gas	⁴¹ Test Method	
49	3891	3544	7780	F	

⁴² I hereby certify that the rules of the Oil Conservation Division have been complied with and that the information given above is true and complete to the best of my knowledge and belief.



Signature:

Printed name: JANA MENDIOLA

Title: REGULATORY ADVISOR

E-mail Address:
Janalyn_mendiola@oxy.com

Date: 07/25/2024 Phone: 432-685-5936

OIL CONSERVATION DIVISION

Approved by:

PATRICIA MARTNEZ

Title: PETROLEUM SPECIALIST

Approval Date: 5/16/2025

District I
1625 N. French Dr., Hobbs, NM 88240
Phone: (575) 393-6161 Fax: (575) 393-0720
District II
811 S. First St., Artesia, NM 88210
Phone: (575) 748-1283 Fax: (575) 748-9720
District III
1000 Rio Brazos Road, Aztec, NM 87410
Phone: (505) 334-6178 Fax: (505) 334-6170
District IV
1220 S. St. Francis Dr., Santa Fe, NM 87505
Phone: (505) 476-3460 Fax: (505) 476-3462

State of New Mexico
Energy, Minerals & Natural Resources Department
OIL CONSERVATION DIVISION
1220 South St. Francis Dr.
Santa Fe, NM 87505

Form C-102
Revised August 1, 2011
Submit one copy to appropriate
District Office

AMENDED REPORT

WELL LOCATION AND ACREAGE DEDICATION PLAT

Table with 3 columns: API Number, Pool Code, Pool Name, Property Code, Property Name, Well Number, OGRID No., Operator Name, Elevation.

Table with 10 columns: UL or lot no., Section, Township, Range, Lot Idn, Feet from the, North/South line, Feet from the, East/West line, County.

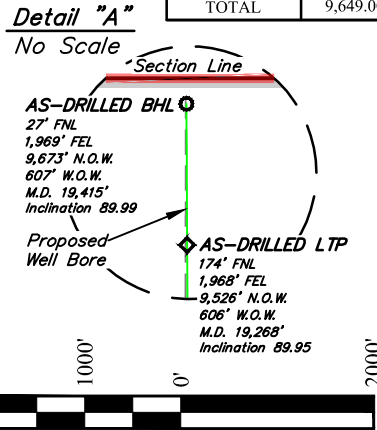
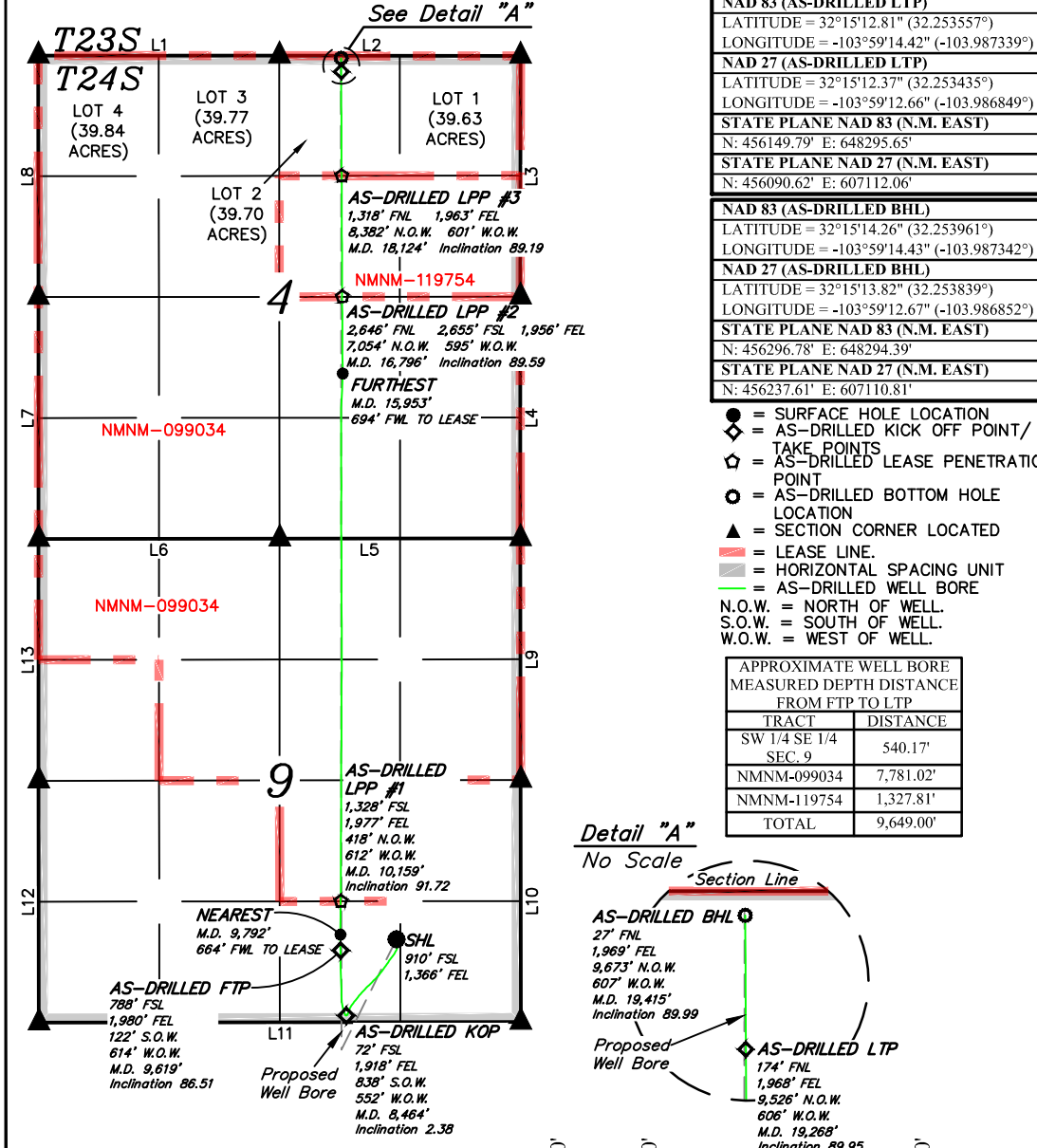
Table with 10 columns: UL or lot no., Section, Township, Range, Lot Idn, Feet from the, North/South line, Feet from the, East/West line, County. Includes Order No. R-21776.

No allowable will be assigned to this completion until all interests have been consolidated or a non-standard unit has been approved by the division.

Table with 3 columns: NAD 83 (SURFACE HOLE LOCATION), NAD 83 (AS-DRILLED KOP), NAD 83 (AS-DRILLED FTP), NAD 83 (AS-DRILLED LPP #1), NAD 83 (AS-DRILLED LPP #2), NAD 83 (AS-DRILLED LPP #3), NAD 83 (AS-DRILLED LTP), NAD 27 (AS-DRILLED LTP).

17 OPERATOR CERTIFICATION
I hereby certify that the information contained herein is true and complete to the best of my knowledge and belief, and that this organization either owns a working interest or unleased mineral interest in the land including the proposed bottom hole location or has a right to drill this well at this location pursuant to a contract with an owner of such a mineral or working interest, or to a voluntary pooling agreement or a compulsory pooling order heretofore entered by the division.
Jana Mendiola 07/25/24
Signature Date
JANA MENDIOLA
Printed Name
janalyn_mendiola@oxy.com
E-mail Address

18 SURVEYOR CERTIFICATION
I hereby certify that the well location shown on this plat was plotted from field notes of actual surveys made by me or under my supervision, and that the same is true and correct to the best of my belief.
June 2, 2023
Date of Survey
Signature and Seal of Professional Surveyor:



APPROXIMATE WELL BORE MEASURED DEPTH DISTANCE FROM FTP TO LTP

LINE TABLE with columns: LINE, DIRECTION, LENGTH. Lists section lines L1 through L13.

SCALE
DRAWN BY: C.S.C. 05-09-24

NOTE:
• Distances referenced on plat to section lines are perpendicular.
• Basis of Bearings is a Transverse Mercator Projection with a Central Meridian of W103°53'00" (NAD 83)
• As-Drilled well head has not been field verified.
• Well Bore data provided by Oxy USA Inc.



Oxy USA Inc.



Location: Eddy County, NM
Field: Pierce Crossing; Bone Spring, East
Facility: Heads CC 9-4 Federal Com Pad

Slot: Heads CC 9-4 Fed Com 24H
Well: Heads CC 9-4 Fed Com 24H
Wellbore: Heads CC 9-4 Fed Com 24H AWB

Plot reference wellpath is Heads CC 9-4 Fed Com 24H Rev-A.0		Grid System: NAD83 / TM New Mexico SP, Eastern Zone (3001), US feet	
True vertical depths are referenced to H&P 423 (KB)		North Reference: Grid north	
Reference wellpath measured depths are referenced to H&P 423 (KB)		Scale: True distance	
H&P 423 (KB) to Mean Sea Level: 2961.7 feet		Coordinates are in feet referenced to Slot	
Mean Sea Level to Ground level (At Slot: Heads CC 9-4 Fed Com 24H): -2935.7 feet		Depths are in feet	
Offset wellpath MDs are referenced to each path's default MD datum		Created by: moyagusa on 2024-03-07; Database: WA_HOU_Midland_Defn	

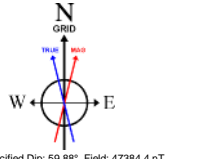
Location Information						
Facility Name	Grid East (US ft)	Grid North (US ft)	Latitude	Longitude	Slot	Local N (ft)
Heads CC 9-4 Federal Com Pad	646615.900	444918.400	32°13'21.7152"N	103°59'34.3966"W	Heads CC 9-4 Fed Com 24H	1709.79
						2326.16
						648941.870
						26ft
						-2935.7ft
						2961.7ft

Well Profile Data							
Design Comment	MD (ft)	Inc (")	Az (°)	TVD (ft)	Local N (ft)	Local E (ft)	DLS (°/100ft)
Tie On	9538.00	80.800	359.380	9103.87	-205.56	-612.34	10.26
Start Build/Turn	9593.00	85.530	0.290	9110.41	-150.97	-612.49	8.76
End Build/Turn	10011.02	91.800	0.344	9120.15	266.72	-610.18	1.50
Start Drop/Turn	10429.90	91.800	0.344	9106.99	686.39	-607.66	0.00
End Drop/Turn	10556.61	90.000	359.734	9105.00	812.08	-607.57	1.50
PBHL (20'FNL & 1970'FEL)	19420.66	90.000	359.734	9105.00	9676.03	-648.68	0.00

Targets							
Name	MD (ft)	TVD (ft)	Local N (ft)	Local E (ft)	Grid East (US ft)	Grid North (US ft)	Latitude
Heads CC 9-4 Fed Com 24H - FTP	N/A	9105.00	-812.94	-600.04	648341.88	445815.17	32°13'30.5350"N
Heads CC 9-4 Fed Com 24H - KOP	N/A	9105.00	-1212.89	-597.50	648344.42	445415.26	32°13'26.5775"N
Heads CC 9-4 Fed Com 24H - LTP	N/A	9105.00	9596.04	-648.35	648293.57	456223.33	32°15'13.5342"N
Heads CC 9-4 Fed Com 24H - PBHL	N/A	9105.00	9676.03	-648.68	648293.24	456303.31	32°15'14.3257"N

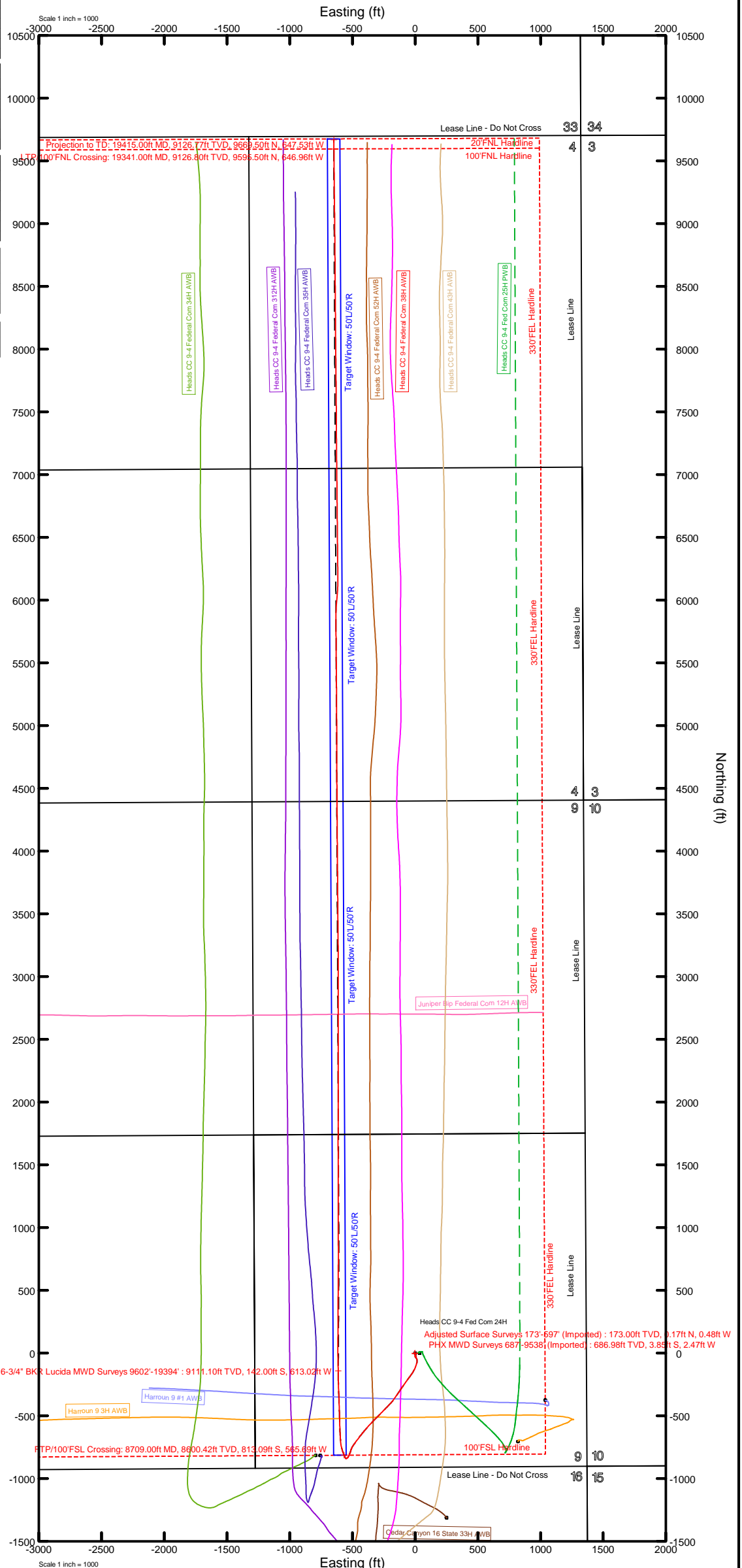
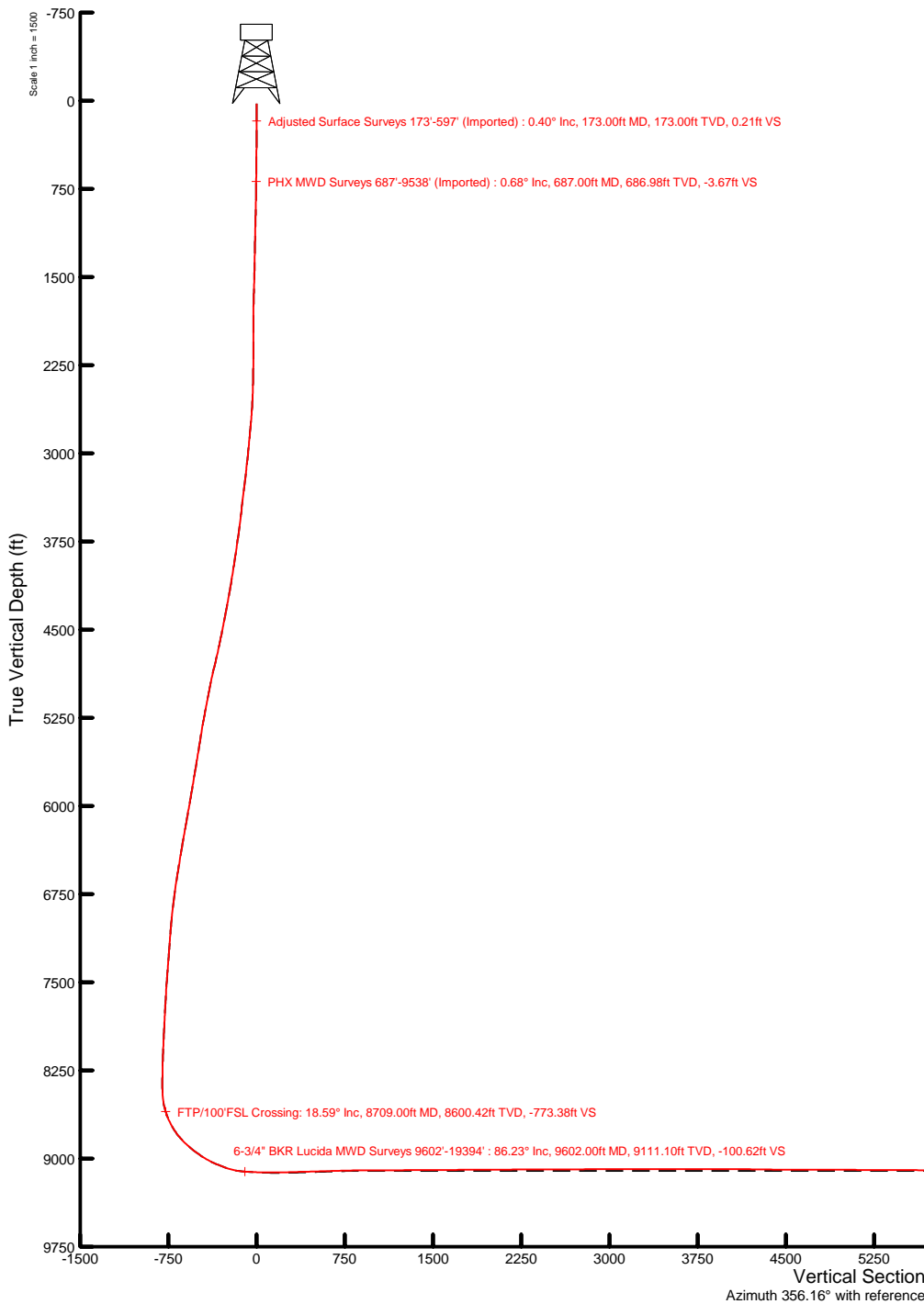
Bottom Hole Location							
MD (ft)	Inc (")	Az (°)	TVD (ft)	Local N (ft)	Local E (ft)	Grid East (US ft)	Grid North (US ft)
19415.00	89.990	359.610	9126.77	9669.50	-647.53	648294.39	456296.78

Wellpath Composition						
Start MD (ft)	End MD (ft)	Tool	Model	Log Name/Comment	Wellbore	Survey Date
26.00	597.00	Owsg MWD rev2	Owsg MWD+HRGM+SAG	Adjusted Surface Surveys 173-597 (Imported)	Heads CC 9-4 Fed Com 24H AWB	3/4/2024
597.00	9538.00	Owsg MWD rev2	Custom Owsg MWD+FR1+SAG+FDIR (Approximation)	PHX MWD Surveys 687-9538 (Imported)	Heads CC 9-4 Fed Com 24H AWB	3/4/2024
9538.00	19415.00	Owsg MWD rev2	Custom Owsg MWD+FR1+SAG+FDIR (Approximation)	6-3/4" BKR Lucida MWD Surveys 9602-19394	Heads CC 9-4 Fed Com 24H AWB	3/4/2024



User specified Dip: 59.88° Field: 47384.4 nT
Magnetic North is 6.67 degrees East of True North (at 2/29/2024)
Grid North is 0.19 degrees East of True North
To correct azimuth from True to Grid subtract 0.19 degrees
To correct azimuth from Magnetic to Grid add 6.48 degrees

Actual Line Calls
FTP Crossing @ 8709.00ft MD: 100'FSL & 1935'FEL
LTP Crossing @ 19,341.00ft MD: 100'FNL & 1968'FEL
Projection to TD @ 19,415.00ft MD: 26.50'FNL & 1968.50'FEL





Actual Wellpath Report

Heads CC 9-4 Fed Com 24H_awp 173'-19394' Proj: 19415'
Page 1 of 10



REFERENCE WELLPATH IDENTIFICATION			
Operator	Oxy USA Inc.	Well	Heads CC 9-4 Fed Com 24H
Field	Pierce Crossing; Bone Spring, East - Eddy County, NM (NAD-83)	API	30-015-47337-00
Facility	Heads CC 9-4 Federal Com Pad	Wellbore	Heads CC 9-4 Fed Com 24H AWB
Slot	Heads CC 9-4 Fed Com 24H		

REPORT SETUP INFORMATION			
Projection System	NAD83 / TM New Mexico SP, Eastern Zone (3001), US feet	Software System	WellArchitect® 6.0
North Reference	Grid	User	Moyagusa
Scale	0.999922	Report Generated	3/14/2024 at 7:38:09 AM
Convergence at slot	0.19° East	Database	WA_HOU_Midland_Defn

WELLPATH LOCATION						
	Local coordinates		Grid coordinates		Geographic coordinates	
	North[ft]	East[ft]	Easting[US ft]	Northing[US ft]	Latitude	Longitude
Slot Location	1709.79	2326.16	648941.87	446628.05	32°13'38.5600"N	103°59'7.2547"W
Facility Reference Pt			646615.90	444918.40	32°13'21.7152"N	103°59'34.3966"W
Field Reference Pt			533303.25	1273342.63	34°30'0.0000"N	104°21'36.0000"W

WELLPATH DATUM			
Calculation method	Minimum curvature	H&P 423 (KB) to Facility Vertical Datum	2961.70ft
Horizontal Reference Pt	Slot	H&P 423 (KB) to Mean Sea Level	2961.70ft
Vertical Reference Pt	H&P 423 (KB)	H&P 423 (KB) to Ground Level at Slot (Heads CC 9-4 Fed Com 24H)	26.00ft
MD Reference Pt	H&P 423 (KB)	Section Origin	N 0.00, E 0.00 ft
Field Vertical Reference	Mean Sea Level	Section Azimuth	356.16°



Actual Wellpath Report

Heads CC 9-4 Fed Com 24H_awp 173'-19394' Proj: 19415'
Page 2 of 10



REFERENCE WELLPATH IDENTIFICATION			
Operator	Oxy USA Inc.	Well	Heads CC 9-4 Fed Com 24H
Field	Pierce Crossing; Bone Spring, East - Eddy County, NM (NAD-83)	API	30-015-47337-00
Facility	Heads CC 9-4 Federal Com Pad	Wellbore	Heads CC 9-4 Fed Com 24H AWB
Slot	Heads CC 9-4 Fed Com 24H		

WELLPATH DATA (187 stations) † = interpolated, ‡ = extrapolated station														
MD [ft]	Inclination [°]	Azimuth [°]	TVD [ft]	Vert Sect [ft]	North [ft]	East [ft]	Grid East [US ft]	Grid North [US ft]	Latitude	Longitude	DLS [°/100ft]	Build Rate [°/100ft]	Turn Rate [°/100ft]	Comments
0.00†	0.000	289.870	0.00	0.00	0.00	0.00	648941.87	446628.05	32°13'38.5600"N	103°59'7.2547"W	0.00	0.00	0.00	
26.00	0.000	289.870	26.00	0.00	0.00	0.00	648941.87	446628.05	32°13'38.5600"N	103°59'7.2547"W	0.00	0.00	0.00	
173.00	0.400	289.870	173.00	0.21	0.17	-0.48	648941.39	446628.22	32°13'38.5617"N	103°59'7.2603"W	0.27	0.27	0.00	Adjusted Surface Surveys 173'-597' (Imported)
257.00	0.470	231.110	257.00	0.13	0.06	-1.03	648940.84	446628.11	32°13'38.5606"N	103°59'7.2666"W	0.51	0.08	-69.95	
351.00	0.490	213.230	350.99	-0.42	-0.52	-1.55	648940.32	446627.53	32°13'38.5549"N	103°59'7.2727"W	0.16	0.02	-19.02	
445.00	0.580	201.540	444.99	-1.17	-1.30	-1.94	648939.93	446626.75	32°13'38.5472"N	103°59'7.2773"W	0.15	0.10	-12.44	
538.00	0.630	188.090	537.98	-2.09	-2.24	-2.19	648939.68	446625.81	32°13'38.5379"N	103°59'7.2802"W	0.16	0.05	-14.46	
597.00	0.600	195.940	596.98	-2.70	-2.86	-2.32	648939.55	446625.19	32°13'38.5317"N	103°59'7.2818"W	0.15	-0.05	13.31	
687.00	0.680	182.810	686.98	-3.67	-3.85	-2.47	648939.40	446624.20	32°13'38.5220"N	103°59'7.2836"W	0.19	0.09	-14.59	PHX MWD Surveys 687'-9538' (Imported)
782.00	0.820	191.020	781.97	-4.89	-5.08	-2.63	648939.24	446622.97	32°13'38.5098"N	103°59'7.2855"W	0.19	0.15	8.64	
876.00	1.130	158.050	875.95	-6.42	-6.60	-2.41	648939.46	446621.45	32°13'38.4948"N	103°59'7.2830"W	0.67	0.33	-35.07	
970.00	1.410	153.950	969.93	-8.37	-8.50	-1.56	648940.31	446619.55	32°13'38.4760"N	103°59'7.2731"W	0.31	0.30	-4.36	
1065.00	1.340	157.980	1064.90	-10.51	-10.58	-0.63	648941.24	446617.47	32°13'38.4553"N	103°59'7.2624"W	0.13	-0.07	4.24	
1158.00	1.520	148.350	1157.87	-12.64	-12.63	0.43	648942.30	446615.42	32°13'38.4349"N	103°59'7.2502"W	0.32	0.19	-10.35	
1252.00	1.270	144.990	1251.85	-14.63	-14.55	1.68	648943.55	446613.50	32°13'38.4160"N	103°59'7.2357"W	0.28	-0.27	-3.57	
1347.00	1.260	142.960	1346.82	-16.40	-16.25	2.91	648944.78	446611.81	32°13'38.3991"N	103°59'7.2214"W	0.05	-0.01	-2.14	
1442.00	1.300	146.630	1441.80	-18.22	-17.98	4.13	648946.00	446610.07	32°13'38.3819"N	103°59'7.2072"W	0.10	0.04	3.86	
1537.00	1.550	153.110	1536.77	-20.34	-20.03	5.31	648947.18	446608.03	32°13'38.3617"N	103°59'7.1936"W	0.31	0.26	6.82	
1632.00	1.840	162.210	1631.73	-23.00	-22.62	6.35	648948.22	446605.43	32°13'38.3359"N	103°59'7.1816"W	0.42	0.31	9.58	
1727.00	1.760	160.850	1726.68	-25.89	-25.45	7.30	648949.17	446602.60	32°13'38.3079"N	103°59'7.1707"W	0.10	-0.08	-1.43	
1822.00	0.810	230.210	1821.66	-27.69	-27.26	7.26	648949.13	446600.79	32°13'38.2900"N	103°59'7.1712"W	1.75	-1.00	73.01	
1917.00	1.120	265.310	1916.65	-28.09	-27.77	5.82	648947.69	446600.28	32°13'38.2850"N	103°59'7.1880"W	0.69	0.33	36.95	
2012.00	1.260	271.920	2011.63	-28.00	-27.81	3.85	648945.72	446600.24	32°13'38.2847"N	103°59'7.2109"W	0.21	0.15	6.96	
2107.00	1.100	275.110	2106.61	-27.76	-27.69	1.90	648943.77	446600.36	32°13'38.2859"N	103°59'7.2336"W	0.18	-0.17	3.36	
2202.00	0.500	243.770	2201.60	-27.77	-27.79	0.62	648942.49	446600.26	32°13'38.2849"N	103°59'7.2485"W	0.76	-0.63	-32.99	
2297.00	1.020	140.210	2296.59	-28.62	-28.63	0.79	648942.66	446599.43	32°13'38.2767"N	103°59'7.2466"W	1.30	0.55	-109.01	
2392.00	1.670	135.290	2391.57	-30.35	-30.26	2.30	648944.17	446597.79	32°13'38.2605"N	103°59'7.2290"W	0.69	0.68	-5.18	
2487.00	2.330	138.240	2486.51	-32.92	-32.68	4.56	648946.43	446595.37	32°13'38.2364"N	103°59'7.2028"W	0.70	0.69	3.11	
2582.00	3.640	145.330	2581.38	-37.03	-36.61	7.57	648949.43	446591.45	32°13'38.1975"N	103°59'7.1680"W	1.43	1.38	7.46	
2676.00	4.900	151.160	2675.12	-43.23	-42.58	11.20	648953.07	446585.48	32°13'38.1383"N	103°59'7.1259"W	1.42	1.34	6.20	



Actual Wellpath Report

Heads CC 9-4 Fed Com 24H_awp 173'-19394' Proj: 19415'
Page 3 of 10



REFERENCE WELLPATH IDENTIFICATION			
Operator	Oxy USA Inc.	Well	Heads CC 9-4 Fed Com 24H
Field	Pierce Crossing; Bone Spring, East - Eddy County, NM (NAD-83)	API	30-015-47337-00
Facility	Heads CC 9-4 Federal Com Pad	Wellbore	Heads CC 9-4 Fed Com 24H AWB
Slot	Heads CC 9-4 Fed Com 24H		

WELLPATH DATA (187 stations)														
MD [ft]	Inclination [°]	Azimuth [°]	TVD [ft]	Vert Sect [ft]	North [ft]	East [ft]	Grid East [US ft]	Grid North [US ft]	Latitude	Longitude	DLS [°/100ft]	Build Rate [°/100ft]	Turn Rate [°/100ft]	Comments
2771.00	5.230	162.120	2769.75	-51.11	-50.25	14.49	648956.35	446577.80	32°13'38.0623"N	103°59'7.0879"W	1.07	0.35	11.54	
2866.00	5.370	175.580	2864.34	-59.75	-58.80	16.16	648958.03	446569.25	32°13'37.9776"N	103°59'7.0688"W	1.31	0.15	14.17	
2961.00	5.420	185.380	2958.93	-68.63	-67.70	16.08	648957.95	446560.35	32°13'37.8895"N	103°59'7.0700"W	0.97	0.05	10.32	
3056.00	6.770	198.530	3053.39	-78.24	-77.48	13.88	648955.75	446550.58	32°13'37.7929"N	103°59'7.0960"W	2.04	1.42	13.84	
3150.00	7.060	197.380	3146.71	-88.75	-88.25	10.39	648952.26	446539.81	32°13'37.6864"N	103°59'7.1370"W	0.34	0.31	-1.22	
3245.00	7.200	198.830	3240.97	-99.68	-99.45	6.73	648948.60	446528.60	32°13'37.5757"N	103°59'7.1801"W	0.24	0.15	1.53	
3340.00	7.650	198.720	3335.18	-111.01	-111.08	2.78	648944.65	446516.98	32°13'37.4608"N	103°59'7.2265"W	0.47	0.47	-0.12	
3435.00	7.580	204.400	3429.34	-122.37	-122.77	-1.84	648940.03	446505.29	32°13'37.3452"N	103°59'7.2807"W	0.80	-0.07	5.98	
3530.00	8.200	210.130	3523.44	-133.51	-134.34	-7.83	648934.04	446493.72	32°13'37.2309"N	103°59'7.3509"W	1.05	0.65	6.03	
3625.00	8.680	210.070	3617.41	-145.08	-146.40	-14.82	648927.05	446481.66	32°13'37.1118"N	103°59'7.4328"W	0.51	0.51	-0.06	
3720.00	9.620	212.070	3711.20	-157.46	-159.33	-22.63	648919.24	446468.73	32°13'36.9841"N	103°59'7.5241"W	1.04	0.99	2.11	
3815.00	10.980	216.100	3804.67	-170.83	-173.37	-32.18	648909.70	446454.69	32°13'36.8455"N	103°59'7.6358"W	1.62	1.43	4.24	
3910.00	11.070	216.320	3897.92	-184.73	-188.03	-42.91	648898.97	446440.04	32°13'36.7008"N	103°59'7.7613"W	0.10	0.09	0.23	
4005.00	11.500	216.070	3991.08	-198.97	-203.03	-53.89	648887.99	446425.04	32°13'36.5527"N	103°59'7.8896"W	0.46	0.45	-0.26	
4100.00	12.160	215.770	4084.06	-213.94	-218.80	-65.31	648876.56	446409.26	32°13'36.3970"N	103°59'8.0232"W	0.70	0.69	-0.32	
4195.00	12.740	215.900	4176.83	-229.70	-235.41	-77.30	648864.57	446392.66	32°13'36.2331"N	103°59'8.1634"W	0.61	0.61	0.14	
4290.00	13.510	215.170	4269.34	-246.38	-252.96	-89.84	648852.04	446375.11	32°13'36.0598"N	103°59'8.3100"W	0.83	0.81	-0.77	
4385.00	13.670	214.780	4361.68	-263.77	-271.26	-102.63	648839.25	446356.82	32°13'35.8792"N	103°59'8.4596"W	0.19	0.17	-0.41	
4479.00	14.040	214.430	4452.95	-281.40	-289.78	-115.41	648826.47	446338.29	32°13'35.6962"N	103°59'8.6091"W	0.40	0.39	-0.37	
4574.00	14.330	214.270	4545.05	-299.70	-309.00	-128.55	648813.33	446319.07	32°13'35.5065"N	103°59'8.7628"W	0.31	0.31	-0.17	
4669.00	15.130	214.490	4636.93	-318.68	-328.94	-142.19	648799.69	446299.14	32°13'35.3097"N	103°59'8.9223"W	0.84	0.84	0.23	
4764.00	16.470	214.550	4728.34	-338.96	-350.25	-156.85	648785.03	446277.83	32°13'35.0993"N	103°59'9.0937"W	1.41	1.41	0.06	
4859.00	17.580	216.430	4819.17	-360.46	-372.89	-173.01	648768.88	446255.19	32°13'34.8758"N	103°59'9.2827"W	1.30	1.17	1.98	
4954.00	17.220	222.400	4909.83	-381.14	-394.81	-191.01	648750.88	446233.27	32°13'34.6594"N	103°59'9.4931"W	1.92	-0.38	6.28	
5048.00	16.860	224.140	4999.71	-399.88	-414.87	-209.88	648732.00	446213.21	32°13'34.4615"N	103°59'9.7136"W	0.66	-0.38	1.85	
5143.00	15.180	224.260	5091.02	-417.41	-433.67	-228.16	648713.73	446194.42	32°13'34.2761"N	103°59'9.9270"W	1.77	-1.77	0.13	
5238.00	16.180	224.210	5182.48	-434.57	-452.06	-246.07	648695.82	446176.02	32°13'34.0946"N	103°59'10.1362"W	1.05	1.05	-0.05	
5333.00	15.810	224.840	5273.80	-451.96	-470.73	-264.43	648677.46	446157.36	32°13'33.9106"N	103°59'10.3506"W	0.43	-0.39	0.66	
5427.00	14.010	225.170	5364.63	-467.88	-487.83	-281.53	648660.37	446140.26	32°13'33.7419"N	103°59'10.5503"W	1.92	-1.91	0.35	
5522.00	13.440	224.560	5456.92	-482.75	-503.80	-297.43	648644.47	446124.29	32°13'33.5843"N	103°59'10.7360"W	0.62	-0.60	-0.64	



Actual Wellpath Report

Heads CC 9-4 Fed Com 24H_awp 173'-19394' Proj: 19415'
Page 4 of 10



REFERENCE WELLPATH IDENTIFICATION			
Operator	Oxy USA Inc.	Well	Heads CC 9-4 Fed Com 24H
Field	Pierce Crossing; Bone Spring, East - Eddy County, NM (NAD-83)	API	30-015-47337-00
Facility	Heads CC 9-4 Federal Com Pad	Wellbore	Heads CC 9-4 Fed Com 24H AWB
Slot	Heads CC 9-4 Fed Com 24H		

WELLPATH DATA (187 stations)														
MD [ft]	Inclination [°]	Azimuth [°]	TVD [ft]	Vert Sect [ft]	North [ft]	East [ft]	Grid East [US ft]	Grid North [US ft]	Latitude	Longitude	DLS [°/100ft]	Build Rate [°/100ft]	Turn Rate [°/100ft]	Comments
5617.00	13.800	224.750	5549.25	-497.58	-519.72	-313.15	648628.74	446108.37	32°13'33.4274"N	103°59'10.9196"W	0.38	0.38	0.20	
5712.00	13.830	224.150	5641.50	-512.67	-535.91	-329.04	648612.86	446092.18	32°13'33.2676"N	103°59'11.1052"W	0.15	0.03	-0.63	
5807.00	13.920	223.540	5733.73	-528.01	-552.34	-344.82	648597.08	446075.75	32°13'33.1055"N	103°59'11.2895"W	0.18	0.09	-0.64	
5902.00	13.900	222.700	5825.94	-543.60	-569.01	-360.43	648581.47	446059.08	32°13'32.9411"N	103°59'11.4718"W	0.21	-0.02	-0.88	
5997.00	13.800	221.770	5918.18	-559.37	-585.85	-375.71	648566.19	446042.25	32°13'32.7750"N	103°59'11.6504"W	0.26	-0.11	-0.98	
6092.00	13.890	220.910	6010.42	-575.39	-602.92	-390.73	648551.17	446025.18	32°13'32.6066"N	103°59'11.8258"W	0.24	0.09	-0.91	
6187.00	13.940	220.050	6102.63	-591.74	-620.29	-405.56	648536.34	446007.81	32°13'32.4351"N	103°59'11.9991"W	0.22	0.05	-0.91	
6282.00	13.330	218.580	6194.96	-608.07	-637.61	-419.75	648522.15	445990.49	32°13'32.2642"N	103°59'12.1650"W	0.74	-0.64	-1.55	
6377.00	13.340	218.520	6287.39	-624.25	-654.75	-433.41	648508.50	445973.35	32°13'32.0950"N	103°59'12.3246"W	0.02	0.01	-0.06	
6471.00	12.440	217.260	6379.02	-639.90	-671.29	-446.29	648495.61	445956.81	32°13'31.9318"N	103°59'12.4752"W	1.00	-0.96	-1.34	
6566.00	12.150	217.410	6471.85	-655.12	-687.38	-458.56	648483.35	445940.73	32°13'31.7730"N	103°59'12.6186"W	0.31	-0.31	0.16	
6661.00	12.250	216.070	6564.70	-670.37	-703.46	-470.57	648471.34	445924.64	32°13'31.6142"N	103°59'12.7590"W	0.32	0.11	-1.41	
6755.00	11.030	216.000	6656.77	-684.93	-718.80	-481.72	648460.18	445909.31	32°13'31.4628"N	103°59'12.8894"W	1.30	-1.30	-0.07	
6850.00	9.620	214.170	6750.22	-698.16	-732.72	-491.52	648450.38	445895.39	32°13'31.3254"N	103°59'13.0040"W	1.52	-1.48	-1.93	
6945.00	8.290	210.340	6844.07	-710.08	-745.20	-499.44	648442.47	445882.91	32°13'31.2021"N	103°59'13.0967"W	1.53	-1.40	-4.03	
7039.00	6.700	206.130	6937.26	-720.44	-755.97	-505.28	648436.63	445872.14	32°13'31.0957"N	103°59'13.1650"W	1.79	-1.69	-4.48	
7134.00	4.970	198.100	7031.77	-729.05	-764.86	-509.00	648432.91	445863.25	32°13'31.0079"N	103°59'13.2087"W	2.01	-1.82	-8.45	
7229.00	4.530	197.950	7126.44	-736.36	-772.34	-511.44	648430.48	445855.77	32°13'30.9340"N	103°59'13.2373"W	0.46	-0.46	-0.16	
7324.00	4.630	196.460	7221.14	-743.44	-779.59	-513.68	648428.23	445848.53	32°13'30.8623"N	103°59'13.2637"W	0.16	0.11	-1.57	
7419.00	4.880	198.080	7315.81	-750.78	-787.11	-516.02	648425.89	445841.01	32°13'30.7880"N	103°59'13.2912"W	0.30	0.26	1.71	
7513.00	4.740	200.720	7409.48	-758.02	-794.54	-518.63	648423.28	445833.57	32°13'30.7145"N	103°59'13.3219"W	0.28	-0.15	2.81	
7608.00	4.670	207.100	7504.16	-764.91	-801.65	-521.78	648420.13	445826.46	32°13'30.6442"N	103°59'13.3589"W	0.56	-0.07	6.72	
7703.00	3.480	201.310	7598.92	-770.84	-807.78	-524.59	648417.32	445820.33	32°13'30.5837"N	103°59'13.3918"W	1.32	-1.25	-6.09	
7798.00	3.430	200.490	7693.74	-776.04	-813.13	-526.64	648415.28	445814.98	32°13'30.5308"N	103°59'13.4158"W	0.07	-0.05	-0.86	
7893.00	3.360	200.820	7788.58	-781.15	-818.39	-528.62	648413.29	445809.72	32°13'30.4788"N	103°59'13.4391"W	0.08	-0.07	0.35	
7988.00	3.350	209.980	7883.42	-785.99	-823.40	-531.00	648410.92	445804.72	32°13'30.4293"N	103°59'13.4669"W	0.56	-0.01	9.64	
8083.00	3.460	213.340	7978.25	-790.58	-828.20	-533.96	648407.95	445799.92	32°13'30.3819"N	103°59'13.5016"W	0.24	0.12	3.54	
8178.00	3.330	220.920	8073.08	-794.82	-832.68	-537.34	648404.57	445795.44	32°13'30.3377"N	103°59'13.5411"W	0.49	-0.14	7.98	
8274.00	2.820	230.030	8168.94	-798.20	-836.30	-540.98	648400.93	445791.81	32°13'30.3020"N	103°59'13.5836"W	0.73	-0.53	9.49	
8369.00	2.390	244.140	8263.85	-800.32	-838.67	-544.55	648397.36	445789.45	32°13'30.2787"N	103°59'13.6253"W	0.81	-0.45	14.85	



Actual Wellpath Report

Heads CC 9-4 Fed Com 24H_awp 173'-19394' Proj: 19415'
Page 5 of 10



REFERENCE WELLPATH IDENTIFICATION			
Operator	Oxy USA Inc.	Well	Heads CC 9-4 Fed Com 24H
Field	Pierce Crossing; Bone Spring, East - Eddy County, NM (NAD-83)	API	30-015-47337-00
Facility	Heads CC 9-4 Federal Com Pad	Wellbore	Heads CC 9-4 Fed Com 24H AWB
Slot	Heads CC 9-4 Fed Com 24H		

WELLPATH DATA (187 stations) † = interpolated, ‡ = extrapolated station														
MD [ft]	Inclination [°]	Azimuth [°]	TVD [ft]	Vert Sect [ft]	North [ft]	East [ft]	Grid East [US ft]	Grid North [US ft]	Latitude	Longitude	DLS [°/100ft]	Build Rate [°/100ft]	Turn Rate [°/100ft]	Comments
8464.00	2.380	248.270	8358.76	-801.67	-840.26	-548.17	648393.75	445787.85	32°13'30.2630"N	103°59'13.6674"W	0.18	-0.01	4.35	
8590.00	5.870	322.280	8484.48	-797.12	-836.13	-554.54	648387.37	445791.99	32°13'30.3041"N	103°59'13.7415"W	4.52	2.77	58.74	
8685.00	16.590	336.820	8577.54	-780.23	-819.77	-562.88	648379.03	445808.34	32°13'30.4663"N	103°59'13.8379"W	11.58	11.28	15.31	
8709.00†	18.586	337.542	8600.42	-773.38	-813.09	-565.69	648376.22	445815.03	32°13'30.5325"N	103°59'13.8704"W	8.36	8.31	3.01	FTP/100'FSL Crossing: 8709.00ft MD
8780.00	24.500	339.010	8666.43	-748.56	-788.86	-575.29	648366.62	445839.25	32°13'30.7725"N	103°59'13.9813"W	8.36	8.33	2.07	
8874.00	31.700	348.140	8749.33	-705.41	-746.42	-587.37	648354.54	445881.69	32°13'31.1929"N	103°59'14.1203"W	8.90	7.66	9.71	
8969.00	41.820	355.490	8825.38	-648.85	-690.25	-595.02	648346.90	445937.86	32°13'31.7490"N	103°59'14.2072"W	11.60	10.65	7.74	
9064.00	48.940	357.780	8892.07	-581.28	-622.79	-598.90	648343.02	446005.31	32°13'32.4166"N	103°59'14.2498"W	7.69	7.49	2.41	
9159.00	52.920	358.400	8951.94	-507.59	-549.09	-601.35	648340.57	446079.00	32°13'33.1459"N	103°59'14.2756"W	4.22	4.19	0.65	
9253.00	60.100	358.480	9003.77	-429.30	-470.78	-603.48	648338.44	446157.31	32°13'33.9209"N	103°59'14.2974"W	7.64	7.64	0.09	
9348.00	66.340	357.790	9046.55	-344.59	-386.05	-606.25	648335.67	446242.03	32°13'34.7593"N	103°59'14.3265"W	6.60	6.57	-0.73	
9443.00	71.220	357.520	9080.93	-256.08	-297.60	-609.88	648332.04	446330.48	32°13'35.6347"N	103°59'14.3654"W	5.14	5.14	-0.28	
9538.00	80.800	359.380	9103.87	-164.09	-205.56	-612.34	648329.58	446422.51	32°13'36.5455"N	103°59'14.3906"W	10.26	10.08	1.96	
9602.00	86.230	359.380	9111.10	-100.62	-142.00	-613.02	648328.90	446486.06	32°13'37.1745"N	103°59'14.3962"W	8.48	8.48	0.00	6-3/4" BKR Lucida MWD Surveys 9602'-19394'
9697.00	87.770	358.340	9116.07	-5.86	-47.15	-614.91	648327.01	446580.90	32°13'38.1131"N	103°59'14.4146"W	1.96	1.62	-1.09	
9792.00	89.840	0.490	9118.05	88.95	47.81	-615.88	648326.04	446675.86	32°13'39.0528"N	103°59'14.4224"W	3.14	2.18	2.26	
9982.00	91.470	0.110	9115.88	278.44	237.79	-614.89	648327.03	446865.82	32°13'40.9326"N	103°59'14.4037"W	0.88	0.86	-0.20	
10077.00	91.500	0.450	9113.41	373.16	332.76	-614.42	648327.50	446960.78	32°13'41.8723"N	103°59'14.3947"W	0.36	0.03	0.36	
10172.00	91.750	0.380	9110.72	467.86	427.72	-613.73	648328.19	447055.73	32°13'42.8119"N	103°59'14.3831"W	0.27	0.26	-0.07	
10267.00	91.590	0.360	9107.95	562.56	522.68	-613.12	648328.80	447150.68	32°13'43.7515"N	103°59'14.3724"W	0.17	-0.17	-0.02	
10362.00	91.720	0.380	9105.21	657.27	617.63	-612.51	648329.41	447245.64	32°13'44.6911"N	103°59'14.3617"W	0.14	0.14	0.02	
10457.00	91.650	0.340	9102.42	751.97	712.59	-611.91	648330.01	447340.58	32°13'45.6307"N	103°59'14.3512"W	0.08	-0.07	-0.04	
10551.00	90.110	359.790	9100.97	845.74	806.58	-611.80	648330.11	447434.56	32°13'46.5607"N	103°59'14.3465"W	1.74	-1.64	-0.59	
10646.00	90.110	359.930	9100.79	940.54	901.58	-612.04	648329.88	447529.55	32°13'47.5007"N	103°59'14.3456"W	0.15	0.00	0.15	
10741.00	90.730	359.840	9100.09	1035.34	996.57	-612.23	648329.69	447624.54	32°13'48.4407"N	103°59'14.3443"W	0.66	0.65	-0.09	
10836.00	90.300	359.910	9099.24	1130.13	1091.57	-612.43	648329.48	447719.53	32°13'49.3807"N	103°59'14.3431"W	0.46	-0.45	0.07	
11022.00	90.110	359.940	9098.57	1315.73	1277.57	-612.68	648329.24	447905.52	32°13'51.2212"N	103°59'14.3390"W	0.10	-0.10	0.02	
11117.00	90.760	359.770	9097.85	1410.53	1372.56	-612.92	648329.00	448000.50	32°13'52.1612"N	103°59'14.3382"W	0.71	0.68	-0.18	
11211.00	90.170	359.790	9097.09	1504.34	1466.56	-613.28	648328.64	448094.49	32°13'53.0913"N	103°59'14.3389"W	0.63	-0.63	0.02	
11400.00	90.270	359.980	9096.36	1692.94	1655.56	-613.66	648328.26	448283.48	32°13'54.9615"N	103°59'14.3362"W	0.11	0.05	0.10	



Actual Wellpath Report

Heads CC 9-4 Fed Com 24H_awp 173'-19394' Proj: 19415'
Page 6 of 10



REFERENCE WELLPATH IDENTIFICATION			
Operator	Oxy USA Inc.	Well	Heads CC 9-4 Fed Com 24H
Field	Pierce Crossing; Bone Spring, East - Eddy County, NM (NAD-83)	API	30-015-47337-00
Facility	Heads CC 9-4 Federal Com Pad	Wellbore	Heads CC 9-4 Fed Com 24H AWB
Slot	Heads CC 9-4 Fed Com 24H		

WELLPATH DATA (187 stations)														
MD [ft]	Inclination [°]	Azimuth [°]	TVD [ft]	Vert Sect [ft]	North [ft]	East [ft]	Grid East [US ft]	Grid North [US ft]	Latitude	Longitude	DLS [°/100ft]	Build Rate [°/100ft]	Turn Rate [°/100ft]	Comments
11587.00	90.330	0.170	9095.38	1879.50	1842.56	-613.41	648328.51	448470.46	32°13'56.8118"N	103°59'14.3264"W	0.11	0.03	0.10	
11776.00	90.110	360.000	9094.66	2068.05	2031.55	-613.13	648328.79	448659.44	32°13'58.6820"N	103°59'14.3160"W	0.15	-0.12	-0.09	
11871.00	90.790	0.120	9093.91	2162.83	2126.55	-613.03	648328.89	448754.43	32°13'59.6220"N	103°59'14.3113"W	0.73	0.72	0.13	
11966.00	90.140	0.010	9093.14	2257.61	2221.55	-612.93	648328.99	448849.42	32°14'0.5620"N	103°59'14.3065"W	0.69	-0.68	-0.12	
12157.00	90.170	359.930	9092.62	2448.18	2412.55	-613.03	648328.89	449040.40	32°14'2.4519"N	103°59'14.3005"W	0.04	0.02	-0.04	
12252.00	90.270	359.920	9092.26	2542.98	2507.54	-613.15	648328.77	449135.39	32°14'3.3919"N	103°59'14.2984"W	0.11	0.11	-0.01	
12442.00	90.180	0.090	9091.51	2732.55	2697.54	-613.13	648328.79	449325.38	32°14'5.2720"N	103°59'14.2910"W	0.10	-0.05	0.09	
12537.00	90.670	0.150	9090.81	2827.32	2792.54	-612.93	648328.98	449420.37	32°14'6.2120"N	103°59'14.2852"W	0.52	0.52	0.06	
12632.00	89.960	359.950	9090.29	2922.10	2887.54	-612.85	648329.07	449515.36	32°14'7.1520"N	103°59'14.2806"W	0.78	-0.75	-0.21	
12727.00	90.210	0.160	9090.15	3016.88	2982.54	-612.76	648329.16	449610.35	32°14'8.0920"N	103°59'14.2760"W	0.34	0.26	0.22	
12917.00	89.960	359.650	9089.86	3206.47	3172.54	-613.08	648328.84	449800.33	32°14'9.9721"N	103°59'14.2725"W	0.30	-0.13	-0.27	
13012.00	89.840	359.530	9090.03	3301.30	3267.53	-613.76	648328.16	449895.32	32°14'10.9121"N	103°59'14.2769"W	0.18	-0.13	-0.13	
13107.00	89.960	359.510	9090.20	3396.14	3362.53	-614.55	648327.37	449990.31	32°14'11.8521"N	103°59'14.2826"W	0.13	0.13	-0.02	
13202.00	90.020	359.510	9090.21	3490.98	3457.53	-615.36	648326.56	450085.30	32°14'12.7922"N	103°59'14.2885"W	0.06	0.06	0.00	
13392.00	89.870	359.460	9090.39	3680.66	3647.52	-617.07	648324.85	450275.28	32°14'14.6722"N	103°59'14.3012"W	0.08	-0.08	-0.03	
13487.00	89.960	359.550	9090.54	3775.49	3742.52	-617.89	648324.03	450370.27	32°14'15.6122"N	103°59'14.3072"W	0.13	0.09	0.09	
13582.00	90.020	359.590	9090.55	3870.33	3837.51	-618.60	648323.31	450465.26	32°14'16.5523"N	103°59'14.3120"W	0.08	0.06	0.04	
13771.00	90.300	359.570	9090.02	4058.99	4026.51	-619.99	648321.93	450654.24	32°14'18.4224"N	103°59'14.3210"W	0.15	0.15	-0.01	
13866.00	89.160	359.580	9090.47	4153.82	4121.50	-620.70	648321.22	450749.22	32°14'19.3624"N	103°59'14.3257"W	1.20	-1.20	0.01	
14056.00	89.130	359.580	9093.31	4343.46	4311.48	-622.09	648319.83	450939.18	32°14'21.2423"N	103°59'14.3347"W	0.02	-0.02	0.00	
14245.00	89.620	359.590	9095.37	4532.11	4500.46	-623.46	648318.46	451128.15	32°14'23.1123"N	103°59'14.3436"W	0.26	0.26	0.01	
14435.00	90.360	359.770	9095.40	4721.75	4690.45	-624.52	648317.40	451318.13	32°14'24.9924"N	103°59'14.3488"W	0.40	0.39	0.09	
14530.00	90.140	0.240	9094.99	4816.53	4785.45	-624.51	648317.41	451413.12	32°14'25.9324"N	103°59'14.3452"W	0.55	-0.23	0.49	
14719.00	89.500	359.610	9095.58	5005.12	4974.45	-624.76	648317.16	451602.10	32°14'27.8025"N	103°59'14.3410"W	0.48	-0.34	-0.33	
14909.00	89.810	359.660	9096.73	5194.77	5164.44	-625.97	648315.95	451792.08	32°14'29.6826"N	103°59'14.3479"W	0.17	0.16	0.03	
15099.00	89.590	359.530	9097.72	5384.42	5354.43	-627.31	648314.61	451982.06	32°14'31.5626"N	103°59'14.3564"W	0.13	-0.12	-0.07	
15194.00	89.810	359.500	9098.22	5479.26	5449.43	-628.11	648313.81	452077.05	32°14'32.5026"N	103°59'14.3622"W	0.23	0.23	-0.03	
15289.00	89.770	359.500	9098.57	5574.10	5544.43	-628.94	648312.98	452172.03	32°14'33.4426"N	103°59'14.3683"W	0.04	-0.04	0.00	
15479.00	89.770	359.530	9099.33	5763.77	5734.42	-630.55	648311.37	452362.01	32°14'35.3226"N	103°59'14.3799"W	0.02	0.00	0.02	
15574.00	89.590	359.470	9099.86	5858.61	5829.41	-631.38	648310.54	452457.00	32°14'36.2626"N	103°59'14.3860"W	0.20	-0.19	-0.06	



Actual Wellpath Report

Heads CC 9-4 Fed Com 24H_awp 173'-19394' Proj: 19415'
Page 7 of 10



REFERENCE WELLPATH IDENTIFICATION			
Operator	Oxy USA Inc.	Well	Heads CC 9-4 Fed Com 24H
Field	Pierce Crossing; Bone Spring, East - Eddy County, NM (NAD-83)	API	30-015-47337-00
Facility	Heads CC 9-4 Federal Com Pad	Wellbore	Heads CC 9-4 Fed Com 24H AWB
Slot	Heads CC 9-4 Fed Com 24H		

WELLPATH DATA (187 stations)														
MD [ft]	Inclination [°]	Azimuth [°]	TVD [ft]	Vert Sect [ft]	North [ft]	East [ft]	Grid East [US ft]	Grid North [US ft]	Latitude	Longitude	DLS [°/100ft]	Build Rate [°/100ft]	Turn Rate [°/100ft]	Comments
15763.00	89.990	5.800	9100.55	6046.31	6018.11	-622.70	648319.22	452645.69	32°14'38.1296"N	103°59'14.2778"W	3.36	0.21	3.35	
15858.00	89.990	1.430	9100.57	6140.48	6112.90	-616.71	648325.21	452740.47	32°14'39.0673"N	103°59'14.2045"W	4.60	0.00	-4.60	
15953.00	88.910	359.270	9101.48	6235.21	6207.89	-616.13	648325.79	452835.45	32°14'40.0072"N	103°59'14.1942"W	2.54	-1.14	-2.27	
16047.00	88.940	359.440	9103.24	6329.05	6301.87	-617.19	648324.73	452929.41	32°14'40.9372"N	103°59'14.2030"W	0.18	0.03	0.18	
16142.00	88.940	359.430	9105.00	6423.88	6396.85	-618.12	648323.80	453024.39	32°14'41.8770"N	103°59'14.2103"W	0.01	0.00	-0.01	
16332.00	90.210	359.460	9106.41	6613.56	6586.83	-619.96	648321.96	453214.35	32°14'43.7570"N	103°59'14.2246"W	0.67	0.67	0.02	
16426.00	90.140	359.400	9106.12	6707.41	6680.82	-620.90	648321.02	453308.34	32°14'44.6871"N	103°59'14.2320"W	0.10	-0.07	-0.06	
16521.00	90.080	359.340	9105.94	6802.26	6775.82	-621.94	648319.98	453403.33	32°14'45.6271"N	103°59'14.2406"W	0.09	-0.06	-0.06	
16616.00	89.560	359.460	9106.24	6897.10	6870.81	-622.94	648318.98	453498.31	32°14'46.5671"N	103°59'14.2486"W	0.56	-0.55	0.13	
16711.00	89.560	359.580	9106.97	6991.94	6965.80	-623.73	648318.19	453593.30	32°14'47.5071"N	103°59'14.2543"W	0.13	0.00	0.13	
16806.00	89.590	359.330	9107.67	7086.78	7060.80	-624.64	648317.28	453688.29	32°14'48.4471"N	103°59'14.2613"W	0.27	0.03	-0.26	
16900.00	89.530	359.430	9108.40	7180.63	7154.79	-625.65	648316.27	453782.27	32°14'49.3772"N	103°59'14.2696"W	0.12	-0.06	0.11	
16995.00	89.560	359.440	9109.15	7275.47	7249.78	-626.59	648315.33	453877.25	32°14'50.3171"N	103°59'14.2769"W	0.03	0.03	0.01	
17185.00	89.280	359.700	9111.07	7465.12	7439.77	-628.02	648313.90	454067.22	32°14'52.1971"N	103°59'14.2864"W	0.20	-0.15	0.14	
17375.00	89.100	359.520	9113.76	7654.76	7629.74	-629.31	648312.61	454257.19	32°14'54.0770"N	103°59'14.2943"W	0.13	-0.09	-0.09	
17470.00	89.190	359.500	9115.18	7749.59	7724.73	-630.12	648311.80	454352.16	32°14'55.0169"N	103°59'14.3002"W	0.10	0.09	-0.02	
17659.00	89.160	359.430	9117.90	7938.25	7913.70	-631.89	648310.03	454541.12	32°14'56.8868"N	103°59'14.3137"W	0.04	-0.02	-0.04	
17754.00	89.930	359.520	9118.65	8033.09	8008.69	-632.76	648309.16	454636.11	32°14'57.8268"N	103°59'14.3203"W	0.82	0.81	0.09	
17848.00	89.130	359.380	9119.42	8126.93	8102.68	-633.66	648308.26	454730.09	32°14'58.7569"N	103°59'14.3272"W	0.86	-0.85	-0.15	
17943.00	89.190	359.510	9120.82	8221.76	8197.67	-634.58	648307.34	454825.07	32°14'59.6968"N	103°59'14.3344"W	0.15	0.06	0.14	
18133.00	89.190	359.590	9123.50	8411.41	8387.65	-636.07	648305.85	455015.03	32°15'1.5767"N	103°59'14.3446"W	0.04	0.00	0.04	
18228.00	89.250	359.530	9124.80	8506.24	8482.63	-636.80	648305.12	455110.01	32°15'2.5166"N	103°59'14.3496"W	0.09	0.06	-0.06	
18322.00	89.100	359.560	9126.15	8600.06	8576.62	-637.55	648304.37	455203.99	32°15'3.4466"N	103°59'14.3547"W	0.16	-0.16	0.03	
18417.00	89.160	359.660	9127.59	8694.88	8671.61	-638.19	648303.73	455298.97	32°15'4.3866"N	103°59'14.3587"W	0.12	0.06	0.11	
18512.00	89.000	359.480	9129.12	8789.70	8766.59	-638.91	648303.01	455393.94	32°15'5.3265"N	103°59'14.3634"W	0.25	-0.17	-0.19	
18607.00	90.020	359.350	9129.93	8884.54	8861.58	-639.88	648302.05	455488.93	32°15'6.2664"N	103°59'14.3712"W	1.08	1.07	-0.14	
18702.00	89.840	359.550	9130.05	8979.38	8956.58	-640.79	648301.13	455583.92	32°15'7.2064"N	103°59'14.3782"W	0.28	-0.19	0.21	
18797.00	90.020	359.440	9130.16	9074.22	9051.57	-641.63	648300.30	455678.90	32°15'8.1465"N	103°59'14.3844"W	0.22	0.19	-0.12	
18892.00	89.870	359.210	9130.25	9169.08	9146.57	-642.74	648299.18	455773.89	32°15'9.0865"N	103°59'14.3939"W	0.29	-0.16	-0.24	
18986.00	89.990	359.480	9130.37	9262.93	9240.56	-643.82	648298.10	455867.88	32°15'10.0166"N	103°59'14.4028"W	0.31	0.13	0.29	



Actual Wellpath Report

Heads CC 9-4 Fed Com 24H_awp 173'-19394' Proj: 19415'
Page 8 of 10



REFERENCE WELLPATH IDENTIFICATION			
Operator	Oxy USA Inc.	Well	Heads CC 9-4 Fed Com 24H
Field	Pierce Crossing; Bone Spring, East - Eddy County, NM (NAD-83)	API	30-015-47337-00
Facility	Heads CC 9-4 Federal Com Pad	Wellbore	Heads CC 9-4 Fed Com 24H AWB
Slot	Heads CC 9-4 Fed Com 24H		

WELLPATH DATA (187 stations) † = interpolated, ‡ = extrapolated station															
MD [ft]	Inclination [°]	Azimuth [°]	TVD [ft]	Vert Sect [ft]	North [ft]	East [ft]	Grid East [US ft]	Grid North [US ft]	Latitude	Longitude	DLS [°/100ft]	Build Rate [°/100ft]	Turn Rate [°/100ft]	Comments	
19081.00	89.990	359.430	9130.38	9357.78	9335.56	-644.72	648297.20	455962.86	32°15'10.9566"N	103°59'14.4098"W	0.05	0.00	-0.05		
19176.00	92.270	359.630	9128.51	9452.59	9430.53	-645.50	648296.42	456057.83	32°15'11.8964"N	103°59'14.4153"W	2.41	2.40	0.21		
19271.00	89.870	359.410	9126.74	9547.40	9525.50	-646.30	648295.62	456152.79	32°15'12.8361"N	103°59'14.4210"W	2.54	-2.53	-0.23		
19341.00†	90.025	359.498	9126.80	9617.28	9595.50	-646.96	648294.96	456222.79	32°15'13.5288"N	103°59'14.4262"W	0.25	0.22	0.13	LTP/100'FNL Crossing: 19341.00ft MD	
19366.00	90.080	359.530	9126.78	9642.24	9620.50	-647.18	648294.75	456247.78	32°15'13.7762"N	103°59'14.4277"W	0.25	0.22	0.13		
19394.00	89.990	359.610	9126.76	9670.19	9648.50	-647.39	648294.54	456275.78	32°15'14.0532"N	103°59'14.4291"W	0.43	-0.32	0.29		
19415.00‡	89.990	359.610	9126.77	9691.15	9669.50	-647.53	648294.39	456296.78	32°15'14.2610"N	103°59'14.4300"W	0.00	0.00	0.00	Projection to TD: 19415.00ft MD	

TARGETS								
Name	TVD [ft]	North [ft]	East [ft]	Grid East [US ft]	Grid North [US ft]	Latitude	Longitude	Shape
Heads CC 9-4 Fed Com 24H - FTP	9105.00	-812.94	-600.04	648341.88	445815.17	32°13'30.5350"N	103°59'14.2702"W	point
Heads CC 9-4 Fed Com 24H - KOP	9105.00	-1212.89	-597.50	648344.42	445415.26	32°13'26.5775"N	103°59'14.2556"W	point
Heads CC 9-4 Fed Com 24H - LTP	9105.00	9596.04	-648.35	648293.57	456223.33	32°15'13.5342"N	103°59'14.4423"W	point
Heads CC 9-4 Fed Com 24H - PBHL	9105.00	9676.03	-648.68	648293.24	456303.31	32°15'14.3257"N	103°59'14.4431"W	point



Actual Wellpath Report

Heads CC 9-4 Fed Com 24H_awp 173'-19394' Proj: 19415'
Page 9 of 10



REFERENCE WELLPATH IDENTIFICATION			
Operator	Oxy USA Inc.	Well	Heads CC 9-4 Fed Com 24H
Field	Pierce Crossing; Bone Spring, East - Eddy County, NM (NAD-83)	API	30-015-47337-00
Facility	Heads CC 9-4 Federal Com Pad	Wellbore	Heads CC 9-4 Fed Com 24H AWB
Slot	Heads CC 9-4 Fed Com 24H		

WELLPATH COMPOSITION - Ref Wellbore: Heads CC 9-4 Fed Com 24H AWB Ref Wellpath: Heads CC 9-4 Fed Com 24H_awp 173'-19394' Proj: 19415'					
Start MD [ft]	End MD [ft]	Positional Uncertainty Model	Log Name/Comment	Wellbore	Survey Date
26.00	597.00	OWSG MWD+HRGM+SAG	Adjusted Surface Surveys 173'-597' (Imported)	Heads CC 9-4 Fed Com 24H AWB	3/4/2024
597.00	9538.00	Custom OWSG MWD+IFR1+SAG+FDIR (Approximation)	PHX MWD Surveys 687'-9538' (Imported)	Heads CC 9-4 Fed Com 24H AWB	3/4/2024
9538.00	19415.00	Custom OWSG MWD+IFR1+SAG+FDIR (Approximation)	6-3/4" BKR Lucida MWD Surveys 9602'-19394'	Heads CC 9-4 Fed Com 24H AWB	3/4/2024



Actual Wellpath Report

Heads CC 9-4 Fed Com 24H_awp 173'-19394' Proj: 19415'
Page 10 of 10



REFERENCE WELLPATH IDENTIFICATION

Operator	Oxy USA Inc.	Well	Heads CC 9-4 Fed Com 24H
Field	Pierce Crossing; Bone Spring, East - Eddy County, NM (NAD-83)	API	30-015-47337-00
Facility	Heads CC 9-4 Federal Com Pad	Wellbore	Heads CC 9-4 Fed Com 24H AWB
Slot	Heads CC 9-4 Fed Com 24H		

WELLPATH COMMENTS

MD [ft]	Inclination [°]	Azimuth [°]	TVD [ft]	Comment
173.00	0.400	289.870	173.00	Adjusted Surface Surveys 173'-597' (Imported)
687.00	0.680	182.810	686.98	PHX MWD Surveys 687'-9538' (Imported)
8709.00	18.586	337.542	8600.42	FTP/100'FSL Crossing: 8709.00ft MD
9602.00	86.230	359.380	9111.10	6-3/4" BKR Lucida MWD Surveys 9602'-19394'
19341.00	90.025	359.498	9126.80	LTP/100'FNL Crossing: 19341.00ft MD
19415.00	89.990	359.610	9126.77	Projection to TD: 19415.00ft MD

COMMENTS

Wellpath general comments
 Actual Line Calls
 FTP Crossing @ 8709.00ft MD: 100'FSL & 1935'FEL
 LTP Crossing @ 19,341.00ft MD: 100'FNL & 1968'FEL
 Projection to TD @ 19,415.00ft MD: 26.50'FNL & 1968.50'FEL

U.S. Department of the Interior
BUREAU OF LAND MANAGEMENT

Well Name: HEADS CC 9-4 FEDERAL COM	Well Location: T24S / R29E / SEC 9 / SWSE / 32.227378 / -103.985348	County or Parish/State: EDDY / NM
Well Number: 24H	Type of Well: OIL WELL	Allottee or Tribe Name:
Lease Number: NMNM99034	Unit or CA Name:	Unit or CA Number:
US Well Number: 3001547337	Operator: OXY USA INCORPORATED	

Subsequent Report

Sundry ID: 2788614

Type of Submission: Subsequent Report

Type of Action: Workover Operations

Date Sundry Submitted: 05/06/2024

Time Sundry Submitted: 01:59

Date Operation Actually Began: 04/14/2024

Actual Procedure: RUPU 04/14/24, RIH & clean out to PBTD @ 19369', pressure test casing to 6000# for 30 min, good test. RIH & perf @ 9619-19268' Total 1170 holes. Frac in 39 stages w/ 408377BBL Produced Water + 7578BBL Brackish Water (> 1,000 mg/l TDS and 10,000 mg/l TDS) w/ 23574430# sand, RD Frac 04/26/24. Well ready to produce 04/30/24. OXY USA Inc. requests a tubing exception while continuing to flow back this well. The estimated date of tubing install is 07/31/2024.

Well Name: HEADS CC 9-4 FEDERAL COM

Well Location: T24S / R29E / SEC 9 / SWSE / 32.227378 / -103.985348

County or Parish/State: EDDY / NM

Well Number: 24H

Type of Well: OIL WELL

Allottee or Tribe Name:

Lease Number: NMNM99034

Unit or CA Name:

Unit or CA Number:

US Well Number: 3001547337

Operator: OXY USA INCORPORATED

Operator

I certify that the foregoing is true and correct. Title 18 U.S.C. Section 1001 and Title 43 U.S.C. Section 1212, make it a crime for any person knowingly and willfully to make to any department or agency of the United States any false, fictitious or fraudulent statements or representations as to any matter within its jurisdiction. Electronic submission of Sundry Notices through this system satisfies regulations requiring a

Operator Electronic Signature: JANA MENDIOLA

Signed on: MAY 06, 2024 01:55 PM

Name: OXY USA INCORPORATED

Title: Regulatory Advisor

Street Address: 1600 GEHRIG DR

City: MIDLAND

State: TX

Phone: (432) 685-5936

Email address: Janalyn_mendiola@oxy.com

Field

Representative Name:

Street Address:

City:

State:

Zip:

Phone:

Email address:

BLM Point of Contact

BLM POC Name: JONATHON W SHEPARD

BLM POC Title: Petroleum Engineer

BLM POC Phone: 5752345972

BLM POC Email Address: jshepard@blm.gov

Disposition: Accepted

Disposition Date: 05/15/2024

Signature: Jonathon Shepard

Submit To Appropriate District Office Two Copies District I 1625 N. French Dr., Hobbs, NM 88240 District II 811 S. First St., Artesia, NM 88210 District III 1000 Rio Brazos Rd., Aztec, NM 87410 District IV 1220 S. St. Francis Dr., Santa Fe, NM 87505	State of New Mexico Energy, Minerals and Natural Resources Oil Conservation Division 1220 South St. Francis Dr. Santa Fe, NM 87505	Form C-105 Revised April 3, 2017 1. WELL API NO. 30-015-47337 2. Type of Lease <input type="checkbox"/> STATE <input type="checkbox"/> FEE <input checked="" type="checkbox"/> FED/INDIAN 3. State Oil & Gas Lease No.
--	---	--

WELL COMPLETION OR RECOMPLETION REPORT AND LOG

4. Reason for filing: <input checked="" type="checkbox"/> COMPLETION REPORT (Fill in boxes #1 through #31 for State and Fee wells only) <input type="checkbox"/> C-144 CLOSURE ATTACHMENT (Fill in boxes #1 through #9, #15 Date Rig Released and #32 and/or #33; attach this and the plat to the C-144 closure report in accordance with 19.15.17.13.K NMAC)	5. Lease Name or Unit Agreement Name HEADS CC 9-4 FEDERAL COM 6. Well Number: 24H
---	--

7. Type of Completion:
 NEW WELL **WORKOVER** **DEEPENING** **PLUGBACK** **DIFFERENT RESERVOIR** **OTHER**

8. Name of Operator: OXY USA INC. 9. OGRID: 16696

10. Address of Operator: P.O. BOX 50250 MIDLAND, TX 79710 11. Pool name or Wildcat
PIERCE CROSSING; BONE SPRING, EAST

12. Location	Unit Ltr	Section	Township	Range	Lot	Feet from the	N/S Line	Feet from the	E/W Line	County
Surface:	O	9	24S	29E		910	SOUTH	1366	EAST	EDDY
BH:	B	4	24S	29E	2	27	NORTH	1969	EAST	EDDY

13. Date Spudded 02/01/24	14. Date T.D. Reached 03/13/2024	15. Date Rig Released 03/15/2024	16. Date Completed (Ready to Produce) 04/30/2024	17. Elevations (DF and RKB, RT, GR, etc.) 2936' GL
18. Total Measured Depth of Well 19415'M 9127'V	19. Plug Back Measured Depth 19369'M 9127'V	20. Was Directional Survey Made? YES	21. Type Electric and Other Logs Run CBL	

22. Producing Interval(s), of this completion - Top, Bottom, Name
9619-19268' 3RD BONE SPRING

23. CASING RECORD (Report all strings set in well)

CASING SIZE	WEIGHT LB./FT.	DEPTH SET	HOLE SIZE	CEMENTING RECORD	AMOUNT PULLED
10.75" J55	45.5	644'	14.75"	1329sx-surf circ	
7.827" P110S	39.3	9577'	9.875"	2196sx-surf	
5.5" P110 CY liner	20	8418'-19395'	6.75"	550sx-TOC@8397'	

24. LINER RECORD				25. TUBING RECORD			
SIZE	TOP	BOTTOM	SACKS CEMENT	SCREEN	SIZE	DEPTH SET	PACKER SET
					3-1/2"	8354'	

26. Perforation record (interval, size, and number) 9619-19268' Total 1170 holes, Hole Size=0.41	27. ACID, SHOT, FRACTURE, CEMENT, SQUEEZE, ETC. <table border="1" style="width:100%; border-collapse: collapse;"> <thead> <tr> <th>DEPTH INTERVAL</th> <th>AMOUNT AND KIND MATERIAL USED</th> </tr> </thead> <tbody> <tr> <td>9619-19268'</td> <td>408377BBL Produced Water + 7578BBL Brackish Water (> 1,000 mg/l TDS and 10,000 mg/l TDS) w/ 23574430# sand</td> </tr> <tr> <td> </td> <td> </td> </tr> <tr> <td> </td> <td> </td> </tr> </tbody> </table>	DEPTH INTERVAL	AMOUNT AND KIND MATERIAL USED	9619-19268'	408377BBL Produced Water + 7578BBL Brackish Water (> 1,000 mg/l TDS and 10,000 mg/l TDS) w/ 23574430# sand				
DEPTH INTERVAL	AMOUNT AND KIND MATERIAL USED								
9619-19268'	408377BBL Produced Water + 7578BBL Brackish Water (> 1,000 mg/l TDS and 10,000 mg/l TDS) w/ 23574430# sand								

28. PRODUCTION

Date First Production 05/02/2024		Production Method (<i>Flowing, gas lift, pumping - Size and type pump</i>) Gas lift			Well Status (<i>Prod. or Shut-in</i>) Prod.		
Date of Test 05/30/2024	Hours Tested 24 hrs.	Choke Size 49	Prod'n For Test Period	Oil - Bbl 3891	Gas - MCF 7780	Water - Bbl. 3544	Gas - Oil Ratio 1999
Flow Tubing Press.	Casing Pressure 516	Calculated 24-Hour Rate	Oil - Bbl. 3891	Gas - MCF 7780	Water - Bbl. 3544	Oil Gravity - API - (<i>Corr.</i>)	

29. Disposition of Gas (*Sold, used for fuel, vented, etc.*)
SOLD 30. Test Witnessed By

31. List Attachments
WBD, C-104, As-Drilled C-102, Final Directional Survey, Completion Sundry C-103

32. If a temporary pit was used at the well, attach a plat with the location of the temporary pit. 33. Rig Release Date:

34. If an on-site burial was used at the well, report the exact location of the on-site burial:
 Latitude _____ Longitude _____ NAD83

I hereby certify that the information shown on both sides of this form is true and complete to the best of my knowledge and belief

Printed

Signature: *Jana Mendiola* Name: Jana Mendiola Title: Regulatory Advisor Date: 07/25/2024

E-mail Address: janalyn_mendiola@oxy.com

INSTRUCTIONS

This form is to be filed with the appropriate District Office of the Division not later than 20 days after the completion of any newly-drilled or deepened well and not later than 60 days after completion of closure. When submitted as a completion report, this shall be accompanied by one copy of all electrical and radio-activity logs run on the well and a summary of all special tests conducted, including drill stem tests. All depths reported shall be measured depths. In the case of directionally drilled wells, true vertical depths shall also be reported. For multiple completions, items 11, 12 and 26-31 shall be reported for each zone.

INDICATE FORMATION TOPS IN CONFORMANCE WITH GEOGRAPHICAL SECTION OF STATE

Southeastern New Mexico		Northwestern New Mexico	
T. Rustler 161'	T. Bell Canyon 2963'	T. Ojo Alamo	T. Penn A"
T. Salado 662'	T. Strawn	T. Kirtland	T. Penn. "B"
T. Castile 1348'	T. Atoka	T. Fruitland	T. Penn. "C"
T. Delaware 2914'	T. Miss	T. Pictured Cliffs	T. Penn. "D"
T. Cherry Canyon 3804'	T. Devonian	T. Cliff House	T. Leadville
T. Brushy Canyon 5053'	T. Silurian	T. Menefee	T. Madison
T. Grayburg	T. Montoya	T. Point Lookout	T. Elbert
T. San Andres	T. Simpson	T. Mancos	T. McCracken
T. Glorieta	T. McKee	T. Gallup	T. Ignacio Otzte
T. Paddock	T. Ellenburger	Base Greenhorn	T. Granite
T. Blinebry	T. Gr. Wash	T. Dakota	
T. Tubb	T. Delaware Sand	T. Morrison	
T. Drinkard	T. Bone Spring 6640'	T. Todilto	
T. Abo	T. 1 st Bone Spring 7748'	T. Entrada	
T. Wolfcamp	T. 2 nd Bone Spring 8540'	T. Wingate	
T. Penn	T. 3 rd Bone Spring 8874'	T. Chinle	
T. Cisco (Bough C)	T.	T. Permian	

OIL OR GAS SANDS OR ZONES

No. 1, from.....to..... No. 3, from.....to.....
 No. 2, from.....to..... No. 4, from.....to.....

IMPORTANT WATER SANDS

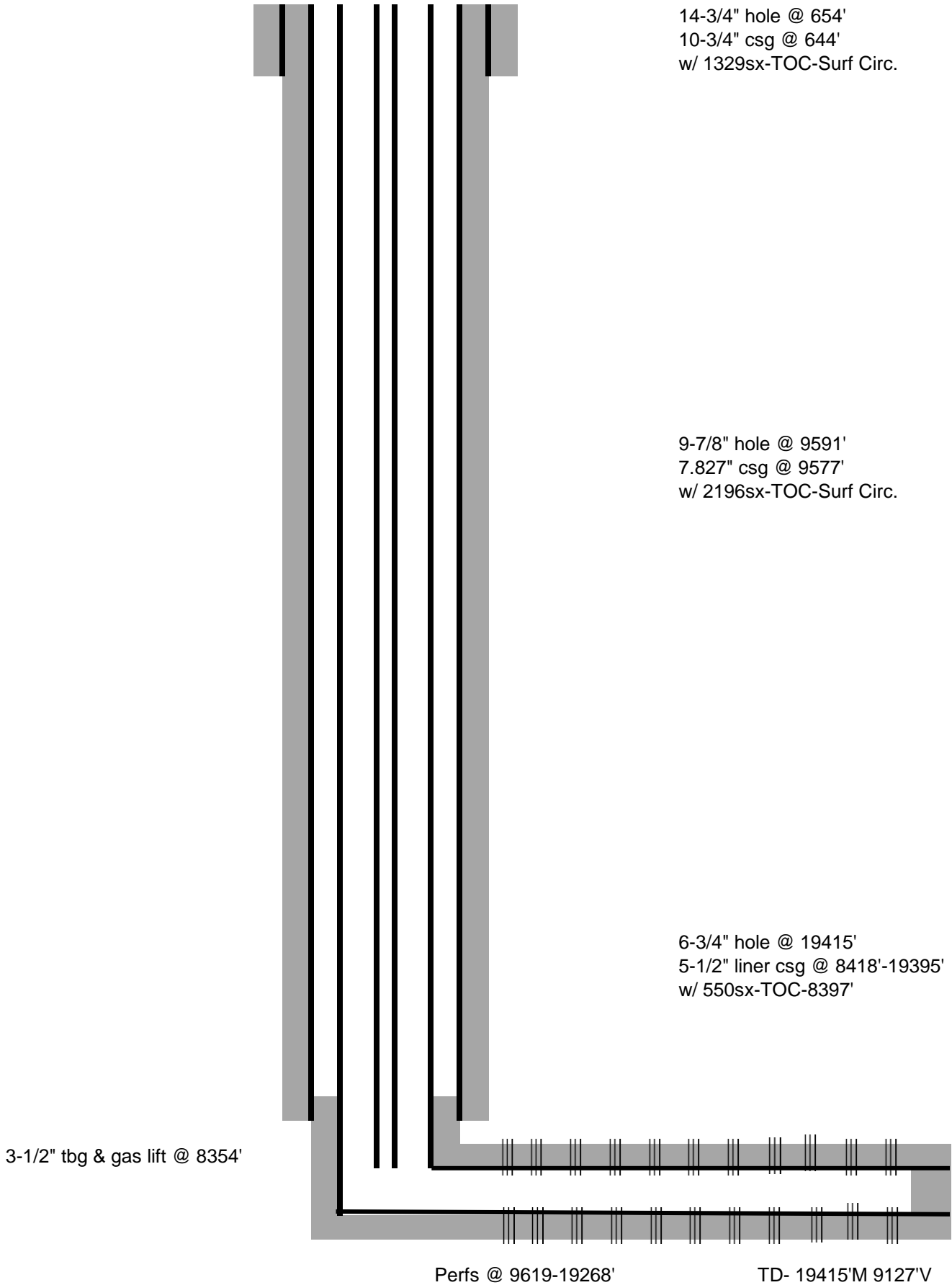
Include data on rate of water inflow and elevation to which water rose in hole.

No. 1, from.....to.....feet.....
 No. 2, from.....to.....feet.....
 No. 3, from.....to.....feet.....

LITHOLOGY RECORD (Attach additional sheet if necessary)

From	To	Thickness In Feet	Lithology	From	To	Thickness In Feet	Lithology

OXY USA Inc.
HEADS CC 9-4 FEDERAL COM 24H
API No. 30-015-47337



14-3/4" hole @ 654'
10-3/4" csg @ 644'
w/ 1329sx-TOC-Surf Circ.

9-7/8" hole @ 9591'
7.827" csg @ 9577'
w/ 2196sx-TOC-Surf Circ.

6-3/4" hole @ 19415'
5-1/2" liner csg @ 8418'-19395'
w/ 550sx-TOC-8397'

3-1/2" tbg & gas lift @ 8354'

Perfs @ 9619-19268'

TD- 19415'M 9127'V

Sante Fe Main Office
Phone: (505) 476-3441

General Information
Phone: (505) 629-6116

Online Phone Directory
<https://www.emnrd.nm.gov/ocd/contact-us>

State of New Mexico
Energy, Minerals and Natural Resources
Oil Conservation Division
1220 S. St Francis Dr.
Santa Fe, NM 87505

ACKNOWLEDGMENTS

Action 367516

ACKNOWLEDGMENTS

Operator: OXY USA INC P.O. Box 4294 Houston, TX 772104294	OGRID: 16696
	Action Number: 367516
	Action Type: [C-104] Completion Packet (C-104C)

ACKNOWLEDGMENTS

<input checked="" type="checkbox"/>	I hereby certify that the required Water Use Report has been, or will be, submitted for this wells completion.
<input checked="" type="checkbox"/>	I hereby certify that the required FracFocus disclosure has been, or will be, submitted for this wells completion.

Sante Fe Main Office
Phone: (505) 476-3441

General Information
Phone: (505) 629-6116

Online Phone Directory
<https://www.emnrd.nm.gov/ocd/contact-us>

State of New Mexico
Energy, Minerals and Natural Resources
Oil Conservation Division
1220 S. St Francis Dr.
Santa Fe, NM 87505

CONDITIONS

Action 367516

CONDITIONS

Operator: OXY USA INC P.O. Box 4294 Houston, TX 772104294	OGRID: 16696
	Action Number: 367516
	Action Type: [C-104] Completion Packet (C-104C)

CONDITIONS

Created By	Condition	Condition Date
plmartinez	None	5/16/2025