

Santa Fe Main Office  
Phone: (505) 476-3441  
General Information  
Phone: (505) 629-6116

State of New Mexico  
Energy, Minerals and Natural Resources

Form C-103  
Revised July 18, 2013

Online Phone Directory Visit:  
<https://www.emnrd.nm.gov/ocd/contact-us/>

OIL CONSERVATION DIVISION  
1220 South St. Francis Dr.  
Santa Fe, NM 87505

WELL API NO. 30-025-05043
5. Indicate Type of Lease STATE <input type="checkbox"/> FEE <input checked="" type="checkbox"/>
6. State Oil & Gas Lease No.
7. Lease Name or Unit Agreement Name Wingerd
8. Well Number 10
9. OGRID Number 151416
10. Pool name or Wildcat Gladiola Devonian

SUNDRY NOTICES AND REPORTS ON WELLS  
(DO NOT USE THIS FORM FOR PROPOSALS TO DRILL OR TO DEEPEN OR PLUG BACK TO A DIFFERENT RESERVOIR. USE "APPLICATION FOR PERMIT" (FORM C-101) FOR SUCH PROPOSALS.)

1. Type of Well: Oil Well ☒ Gas Well ☐ Other

2. Name of Operator Fasken Oil and Ranch, Ltd

3. Address of Operator 6101 Holiday Hill Road, Midland, TX 79707

4. Well Location  
Unit Letter J : 2310 feet from the South line and 1650 feet from the East line  
Section 24 Township 12S Range 37E NMPM County Lea

11. Elevation (Show whether DR, RKB, RT, GR, etc.)  
3886 KB

12. Check Appropriate Box to Indicate Nature of Notice, Report or Other Data

NOTICE OF INTENTION TO:

PERFORM REMEDIAL WORK ☐ PLUG AND ABANDON ☐  
TEMPORARILY ABANDON ☒ CHANGE PLANS ☐  
PULL OR ALTER CASING ☐ MULTIPLE COMPL ☐  
DOWNHOLE COMMINGLE ☐  
CLOSED-LOOP SYSTEM ☐  
OTHER: ☐

SUBSEQUENT REPORT OF:

REMEDIAL WORK ☐ ALTERING CASING ☐  
COMMENCE DRILLING OPNS. ☐ P AND A ☐  
CASING/CEMENT JOB ☐  
OTHER: ☐

13. Describe proposed or completed operations. (Clearly state all pertinent details, and give pertinent dates, including estimated date of starting any proposed work). SEE RULE 19.15.7.14 NMAC. For Multiple Completions: Attach wellbore diagram of proposed completion or recompletion.

Fasken Oil and Ranch, Ltd Temporarily Abandoned as wellbore was in bad shape.

See attached drilling report procedure.

Spud Date:

Rig Release Date:

I hereby certify that the information above is true and complete to the best of my knowledge and belief.

SIGNATURE Viola Vasquez TITLE Regulatory Analyst DATE 03-11-2025

Type or print name Viola Vasquez E-mail address: violav@forl.com PHONE: 432-687-1777

**For State Use Only**

APPROVED BY: \_\_\_\_\_ TITLE \_\_\_\_\_ DATE \_\_\_\_\_

Conditions of Approval (if any):

**Fasken Oil and Ranch, LTD.**

## Daily Operations Report

(All Event Days)

1/1/2024 thru 6/5/2025

Page

Printed 6/5/2025

**Wingerd # 10**

Lea Co., NM

Event Date: 12/18/2024

Well ID: WI8051-10

Parted Rods. TA'D

**Dec 18, 2024 Wednesday Day 1**

well was down on POC DT/set point malfunction. Tried to restart unit went down immediately on same and was Extremely weight heavy. Stephen Delgado pulled POC up remotely and card showed also that it was parted. Anchors dated 10-2023 GOOD. Notified Supervisors and added to pull list. No further until rigged up. (SAC)

Daily Cost:

Cum. Cost: \$0

**Dec 23, 2024 Monday Day 2**

FCP - 20 psi. SITP - 30 psi. Late start due to PU fogged in at Seminole yard, contractor set rig mats, RU Stone Oilfield pump truck on tubing, loaded well w/ 1 bfw w/ biocide, tested tubing to 530 psi f/ 5" w/ no pressure loss and bled off pressure. Relief operator had issues spotting PU, RUPU, Standard #34. RD horse head, observed 6K rod weight, LD PR, 2 - 1" N90 steel pony rods, 2', 8', 2 - 1.25" FG pony rods, 9' 9', POW w/ 100 - 1.25" FG rods, installed rod monkey, secured well and SDON. (MB)

Daily Cost:

Cum. Cost:

**Dec 24, 2024 Tuesday Day 3**

No activity dueto Holiday. (MB)

Daily Cost:

Cum. Cost: \$0

**Dec 25, 2024 Wednesday Day 4**

No activity dueto Holiday. (MB)

Daily Cost:

Cum. Cost: \$0

**Dec 26, 2024 Thursday Day 5**

No activity dueto Holiday. (MB)

Daily Cost:

Cum. Cost: \$0

**Dec 27, 2024 Friday Day 6**

FCP-20 psi, SITP-light blow. RU Stone vacuum truck on tubing, finished POW w/ a total of 157 - 1.25" FG rods, 37 - 7/8" "D" rods, 10 - 7/8" N90 rods w/ 4 non glass molded rod guides, observed body part on top of 47th 7/8" rod, 3' down f/ coupling, 7086' FS, observed steel rods w/ moderate to heavy pitting and notified Midland office. RIW w/ 2.35" fishing tool w/ 7/8" slips, 7/8" pony rod, 9 - 7/8" N90 rods w/ molded rod guides, 37- 7/8" "D" rods. 157 - 1.25" FG rods, 2 - 1.25" FG pony rods, 2 - 1" steel pony rods, 2 - 1" tag rods and engaged TOF @7090' FS. Worked rods up to 20K overweight to unset pump for 30" when rods jumped, observed no vacuum on tubing, lost 6K weight on indicator and notified Midland office. LD tag rods and all pony rods. POW w/ 157 - 1.25" FG rods, 46 - 7/8" N90 rods, LD fishing tool and parted rod. POW w/ a total of 103 - 7/8" rods, 104 - 3/4" rods, 17 - 1.5" sinker bars and parted shear tool. Observed 3/4" rods had light pitting, sinker bars showed no pitting on necks and very light pitting on bodies. Notified Midland office, secured well and SDON. (MB)

**Fasken Oil and Ranch, LTD.**

## Daily Operations Report

(All Event Days)

1/1/2024 thru 6/5/2025

Page

Printed 6/5/2025

Daily Cost:

Cum. Cost:

**Dec 28, 2024 Saturday Day 7**

No activity. Well open to battery. (MB)

Daily Cost:

\$0

Cum. Cost:

**Dec 29, 2024 Sunday Day 8**

No activity. Well open to battery. (MB)

Daily Cost:

\$0

Cum. Cost:

.5

**Dec 30, 2024 Monday Day 9**

SICP-blow, SITP-light blow. Called for annular and single BOP. TWS set in catwalk and 2 sets of pipe racks. Crew changed equipment to 2-7/8" and removed bolts on WH. Waited on BOP and observed wrong bolts in BOP. Called for and waited 1 hr on combination spool. NU spool and single BOP with annular. D&L Meters delivered spool, d NU spool and single BOP with annular. Mesquite tech worked tubing up to 115K for 1.5 hrs and observed no movement in TOSSD. Operator fixed springs on brake handle and Mesquite tech put left hand rotation in tubing. Pulled to 125K on 3 occasions without success. Dropped weight to 80K and set slips. SWI and SDON. Renegade WL to be on location 7:30 a.m. on 12-31-24. (MB)

Daily Cost:

Cum. Cost:

**Dec 31, 2024 Tuesday Day 10**

SICP-blow, SITP-light blow. RU Renegade WL, and RIW w/ 2-1/8" free point tool to 3240', checked tools for proper function and found tubing 100% free. RIW w/ free point tool tagged top of sinker bar @11,554', WL depth, picked up to 11,550', set free point tool and observed tubing 100% free @11,550' WL depth and notified Midland office. POW w/ WL. RU 2-1/8" chemical cutter and RIW and tagged top of sinker bar @11,554', ran collar strip, and found tubing collars @11,522' and 11,490'. POW to 11,505', pulled 15K overweight and cut 2-7/8" tubing @11,505' WLM. POW w/ cutter and RDWL. LD 3 2-7/8" L80 tubing subs, RU Hydrostatic Pipe Services scanunit and POW scanning 72 joints 2-7/8" N80 & L80 tubing, and scanned 20 joints yellow band tubing and 52 joints blue band tubing and RD scan unit. Secured well and SDON. (MB)

Daily Cost:

Cum. Cost:

**Jan 1, 2025 Wednesday Day 11**

No activity. (MB)

Daily Cost:

\$0

Cum. Cost:

**Jan 2, 2025 Thursday Day 12**

SICP-20 psi, SITP-30 psi. Bled down dry gas from casing and tubing and tubing began flowing. Calibrated and RU Hydrostatic Pipe Services scan unit. POW scanning 330 joints 2-7/8" N80 & L80 tubing. Found 90 joints 2-7/8" yellow band tubing, 229 joints 2-7/8" blue band tubing, 31 joints 2-7/8" green band tubing, 4 joints 2-7/8" red band tubing and RD scan unit. Observed tubing dragging occasionally from 10-20K overweight.

**Fasken Oil and Ranch, LTD.**

Daily Operations Report

(All Event Days)

1/1/2024 thru 6/5/2025

Page

Printed 6/5/2025

Found no anomalies with tubing and had a clean cut. Ordered 5-1/2" casing scraper and 4-5/8" bit for 1-3-25 am and ordered replacement tubing. Lucky Rentals set reverse unit and calipered and measured 4-1/2" wash pipe and tools. Stone Oilfield filled reverse pit with fw with Biocide. Secured well and SDON. (MB)

Daily Cost:

Cum. Cost:

**Jan 3, 2025 Friday****Day 13**

SICP-20 psi. Lucky Rentals delivered 5-1/2" casing scraper, measured and calipered scraper. RIW with 4-5/8" used cone bit, 5-1/2" casing scraper, 2-7/8" seating nipple and 82 joints 2-7/8" blue band tubing. Stacked out @2645' FS, pulled 4K overweight to pull free and tried rotating through spot without success. Observed bit jumping up and down like running on metal and notified Midland office. Called for 4-1/2" impression block. POW with bit and scraper. RIW with 4-5/8" impression block and tagged bad spot @ 2645' FS. Set 5K down on impression block and pulled 4K overweight to pull out of bad spot. POW with tubing and LD impression block. Observed partially collapsed casing. Lucky's fisherman called for swages, collars, bumper sub, jars and accelerator. Waited 1 hr on delivery driver. Removed protectors on tubing, cleaned threads and tallied and installed pin end protectors. Lucky delivered fishing tools, measured and calipered fishing tools. RIW with 4" casing swage, 3-3/4" bumper sub, 3-3/4" hydraulic jars, 4 3-1/2" drill collars, 3-3/4" accelerator, 3-3/8 x-over sub, 2-7/8" seating nipple and 21 joints 2-7/8" blue band tubing to 840' FS. Secured well and SDON. (MB)

Daily Cost: 0

Cum. Cost: 0

**Jan 4, 2025 Saturday****Day 14**

No activity. (MB)

Daily Cost:

Cum. Cost:

**Jan 5, 2025 Sunday****Day 15**

No activity. (MB)

Daily Cost: \$0

Cum. Cost:

**Jan 6, 2025 Monday****Day 16**

SICP-blow, SITP-blow. Finished RIW with 4" swage, bumper sub, jars, 4 3-1/2" drill collars, accelerator, x-over sub, 2-7/8" seating nipple and 77 joints 2-7/8" blue band tubing. Tagged tight spot @ 2645' FS, hit tight spot one time and fell through. Worked 4" swage through spot with no issues and RIW to 2701'. POW with tubing and LD 4" swage. RIW with 4-1/2" swage, BHA, 2-7/8" seating nipple and 77 joints 2-7/8" blue band tubing. Observed a small bobble @ 2645' and worked swage through spot 6 times. POW with tubing and tools. RIW with 4-3/4" swage, BHA, 2-7/8" seating nipple and 77 joints 2-7/8" blue band tubing. Observed small bobble @ 2645' and worked swage through spot 6 times with no issues. Resumed RIW with 4-3/4" swage BHA and a total of 350 joints 2-7/8" BB and YB tubing to 11,480' FS and 25' above cut off @ 11,505' FS. POW with 156 joints 2-7/8" BB and YB tubing to 6445' FS. Secured well and SDON. (MB)

Daily Cost:

Cum. Cost:

**Jan 7, 2025 Tuesday****Day 17**

SICP-blow, SITP-blow. Finished POW with a total of 350 joints 2-7/8" BB and YB tubing.

**Fasken Oil and Ranch, LTD.****Daily Operations Report**

(All Event Days)

1/1/2024 thru 6/5/2025

Page

Printed 6/5/2025

Stopped @ 2645' and worked 4-3/4" swage through spot with no issues. LD accelerator and stand 4 3-1/2" drill collars. LD 4-3/4" swage, bumper sub and jars. RIW with 4-1/2" Texas pattern shoe with 3-7/8" ID, 4 joints 4-1/2" wash pipe with 3-7/8" ID, 3-5/8" x 4-3/8" top sub, 2-7/8" seating nipple and 77 joints 2-7/8" BB tubing and stacked out @2640'. Pulled 3-4K overweight to pull out tight spot. Eased down and tagged @2586'. Attempted to rotate down without success. POW with 77 joints 2-7/8" BB tubing, seating nipple and LD wash pipe. Ordered 4-3/4" string mill for 1-8-25 am. Secured well and SDON. (MB)

Daily Cost:

Cum. Cost:

**Jan 8, 2025 Wednesday Day 18**

Late start due to Standard crew had safety meeting, measured and calipered 4-3/4" string mill, 3-1/2" x-over. Rig crew stated weather conditions were not safe to work in. Left well secured and SDON. (MB)

Daily Cost:

Cum. Cost:

**Jan 9, 2025 Thursday Day 19**

No activity. SD due to icy weather conditions. (MB)

Daily Cost:

Cum. Cost:

**Jan 10, 2025 Friday Day 20**

SICP-0 psi. Late start due to icy conditions. RIW with 2-7/8" mule shoe sub, 2 joints 2-7/8" BB tubing, 3-1/2" x-over sub, 4-3/4" string mill, 3-3/4" hydraulic jars, 4 3-1/2" drill collars, 3-3/4" accelerator, 3-3/8" top x-over sub, 2-7/8" seating nipple and 76 joints 2-7/8" BB tubing. tagged @2588'. RU Lucky Rentals stripper head, 2.5 power swivel and milled from 2588' - 2593' FS. Reciprocated mill until no torque was observed on gauge. RIW and tagged 2nd spot @2600' FS. Milled from 2600' - 2603' FS and reciprocated mill until no torque was observed on gauge. RIW to 2777' FS with mill @2696' FS and had no issues. RD swivel and BIW stripper. POW with 30 joints 2-7/8" BB tubing to 1805' FS and mill @1725' FS. Secured well and SDON. J&W Services picked up tapped 3K flange to put in FORL stock, 2-7/8" mandrel and returned mandrel to Forum Energy Technology. (MB)

Daily Cost:

Cum. Cost: \$

**Jan 11, 2025 Saturday Day 21**

SICP-0 psi. Finished POW w/ 2-7/8" BB tubing, LD accelerator, stand 3-1/2" drill collars, and LD jars, string mill and mule shoe. Observed string mill w/ good cut-rite and only slightly worn areas. ND single BOP, annular and x-over spool. NU D&L Meters 3K manual BOP w/ function tested. RIW w/ 4-1/2" shoe w/ 3-7/8" ID, 4-1/2" wash pipe w/ 3-7/8" ID, 4-3/8" top sub, 2-7/8" seating nipple and lightly tagged tight spot @2588' FS. Observed light drag, continued RIW w/ a total of 352 joints 2-7/8" BB & YB tubing and tagged TOF @11,515'. Worked shoe over fish, eased down to 11,629' FS and notified Midland office. POW and LD 5 joints 2-7/8" tubing to 11,472' FS, secured well and SDON. (MB)

Daily Cost:

Cum. Cost:

**Jan 12, 2025 Sunday Day 22**



**Fasken Oil and Ranch, LTD.**

## Daily Operations Report

(All Event Days)

1/1/2024 thru 6/5/2025

Page 6

Printed 6/5/2025

No activity. (MB)

Daily Cost: \$0  
Cum. Cost:

**Jan 13, 2025 Monday Day 23**

SICP-0 psi, SITP-0 psi. RIW with 3 joints 2-7/8" YB tubing to 11,570' FS. RU Lucky Rentals 2.5 power swivel and BIW stripper head. RIW and tagged @ 11,629'. Thawed out seats in reverse unit and established conventional circulation with 42 bfw with frac guard 305, 2.5 bpm at 1250 psi. Washed down 2' to skirt on TOSSD @ 11,631' on multiple occasions and observed pressure decreased from 1500 psi - 1200 psi. Pumped 82 bfw with frac guard 305, 2.5 bpm at 1200 psi and observed fluid coming from around WH and underneath base on pumping unit. Notified Midland office and RD swivel. POW and LD 5 joints 2-7/8" tubing. RU Stone vacuum truck on tubing and let well equalize. Sent vacuum truck to disposal. RU Vacuum truck on tubing and continued equalizing well and RD vacuum truck. ND BIW stripper head and POW with 276 joints 2-7/8" tubing to 2512', Observed no drag pulling through bad spot from 2645' - 2588'. Secured well and SDON. Contractor hauled 150 bfw to public disposal. (MB)

Daily Cost:  
Cum. Cost:

**Jan 14, 2025 Tuesday Day 24**

SICP-0 psi, SITP-0 psi. Finished POW with 2-7/8" tubing, LD 4-1/2" wash pipe and shoe. RIW with 4-5/8" overshot with 3' x 4-5/8" extension with 2-7/8" basket grapple, 3-3/4" bumper sub, 3-3/4" hydraulic jars, 4 - 3-1/2" drill collars, 3-3/4" accelerator, 3-5/8" top x-over sub, 2-7/8" seating nipple and 351 joints 2-7/8" tubing. Tagged TOF @ 11,515' FS, engaged TOF and set grapple. Mesquite Oil Tools tech attempted to release packer without success and jarred on packer several times. Attempted to release TOSSD without success and continued working tubing and fishing tools to release packer for 2.5 hours when packer pulled free. POW with 9 joints 2-7/8" tubing to 11,363' FS, when well began blowing gas and old drilling mud out at the base of the pumping unit. Let gas bleed down and crew dug out around 9-5/8" WH. Observed nipple broke off in WH. Crew extracted broken piece and ran tap through 2" opening. Installed new nipple and valve in 9-5/8" WH. Secured well and SDON. (MB)

Daily Cost:  
Cum. Cost:

**Jan 15, 2025 Wednesday Day 25**

SICP-light blow, SITP-vacuum. Observed 12K drag on first 2 stands pulled and POW w/ 342 joints 2-7/8" tubing and observed some light drag through casing collars for the first 60 joints. Had light drag through bad spot from 2588' - 2645' FS, LD accelerator, 4 - 3-1/2" drill collars, jars, bumper sub, drain sub and overshot w/ cut off joint. LD 2 joints 2-7/8" tubing, 1 joint 2-3/8" IPC tubing w/ seating nipple, perforated sub and mud joint w/ BP. Observed bottom lugs on packer were jarred up into lower "J" track housing, housing was swelled and pump was stuck in IPC joint. Observed perforated sub plugged 18" from the bottom and mud joint completely plugged. RU Renegade WL, RIW w/ 4.625" gauge ring, eased down through bad spot w/ no issues and RIW to 11,615' FS. Pulled collar strip, w/ collars at 11,604' FS and 11,577' FS. POW, LD gauge ring and junk bucket. RIW w/ 5-1/2" CIBP, eased through bad spot w/ no issues, got on depth w/ collar strip and set 5-1/2" CIBP @ 11,591' FS, 50' above top perforation @ 11,641' FS. POW and LD baker setting tool. RU 50' dump bailer, mixed 3 sxs cement, RIW w/ dump bailer and dumped bailed 3 sxs cement on CIBP. POW and LD dump bailer and RDWL. Secured well and SDON. (MB)

Daily Cost:

**Fasken Oil and Ranch, LTD.**

Daily Operations Report

(All Event Days)

1/1/2024 thru 6/5/2025

Page

Printed 6/5/2025

Cum. Cost: 6222.00

**Jan 16, 2025 Thursday Day 26**

SICP-blow. RIW with 2-7/8" seating nipple, 50 joints 2-7/8" BB tubing to 1620' FS and secured well. Standard mechanic arrived and changed out brake pads on PU in 1.5 hrs. RIW with a total of 176 joints 2-7/8" tubing to 5705' FS when air compressor went down on PU. Called for mechanic and notified Midland office. Mechanic observed internal shaft and sprocket was wore out in engine housing. SD to complete repairs on rig and SDON. (MB)

Daily Cost: 22.00

Cum. Cost: 6244.00

**Jan 17, 2025 Friday Day 27**

SITP-0 psi. RIW with 23 - 3/4" N90 steel rods with 4 mrg per rod, 81 - 3/4" "D" rods, 6 - 7/8" "D" rods, 60 - 7/8" N90 steel rods with 4 mrg per rod, 37 - 7/8" N90 steel rods and 157 - 1.25" FG rods from derrick. POW and LD 157 - 1.25" FG rods, 19 - 7/8" N90 steel rods to 4625' FS and installed rod monkey. Secured well and SDON. (MB)

Daily Cost: 22.00

Cum. Cost: 6266.00

**Jan 18, 2025 Saturday Day 28**

SITP-0 psi. RIW w/ 23 - 3/4" N90 steel rods w/ 4 mrg per rod, 81 - 3/4" "D" rods, 6 - 7/8" "D" rods, 60 - 7/8" N90 steel rods w/ 4 mrg per rod, 37 - 7/8" N90 steel rods and 157 - 1.25" FG rods from derrick. POW and LD 157 - 1.25" FG rods, 19 - 7/8" N90 steel rods to 4625' FS and installed rod monkey. Secured well and SDON. (MB)

Daily Cost: 22.00

Cum. Cost: 6288.00

**Jan 19, 2025 Sunday Day 29**

No activity. (MB)

Daily Cost: 0.00 \$0

Cum. Cost: 6288.00

**Jan 20, 2025 Monday Day 30**

No activity. (MB)

Daily Cost: 0.00

Cum. Cost: 6288.00

**Jan 21, 2025 Tuesday Day 31**

SITP-0 psi. Finished POW and LD a total of 157- 1.25" FG rods, 37- 7/8" N90 rods, 60- 7/8" N90 rods with 4 mrg per rod, 6 - 7/8" "D" rods, 81- 3/4" "D" rods and 23- 3/4" N90 rods with 4 mrg per rod. NDWH, NU 3K manual BOP and mixed 140 gals PI-10 packer fluid in 330 bfw. RU 3 Stone vacuum trucks to Lucky reverse unit and established conventional circulation with 197 bfw with PI-10 packer fluid. Circulated well with 345 bfw with PI-10 packer fluid (103 bbls over capacity of 242 bbls). Observed fluid was still dirty and well flowed back up tubing. Let well equalize, POW and LD 2-7/8" YB tubing to 7425' FS. Secured well and SDON. (MB)

Daily Cost: 22.00

Cum. Cost: 6310.00

**Jan 22, 2025 Wednesday Day 32**

Fasken Oil and Ranch, LTD.

Daily Operations Report  
(All Event Days)

1/1/2024 thru 6/5/2025

Page  
Printed 6/5/2025

SITP-0 psi, SICP-0 psi. Finished POW and LD 229 joints 2-7/8" blue band tubing while installing 2-7/8" pin end protectors, 128 joints yellow band tubing, 1 joint 2-7/8" L80 IPC, 2 joints 2-7/8" N80 not scanned and 2-7/8" x 15' mule shoe joint. ND BOP and NUWH. Lucky reverse unit filled well with 30 bfw with frac guard and SWI. RDPU, cleaned wellhead, location and released all rental equipment. TRC picked up all rods, loaded all tubing and cleaned location. Will take to FORL pipe yard on 1-23-25. (MB)

Daily Cost:  
Cum. Cost:

Jan 23, 2025 Thursday Day 33  
waiting on P&A FINAL REPORT (SAC)

Daily Cost:  
Cum. Cost: , - - -

Report Based On:  
Date Range: 1/1/2024 through 6/5/2025  
Wells selected based on the following Report Menu selections:  
Wells = Wingerd # 10.



Well Name: **Wingerd #10**  
Operator: **Fasken Oil and Ranch, Ltd.**  
Location: 2310' FSL & 1650' FEL  
Sec 24, T12S, R37E  
Lea County, NM  
Compl.: 4/17/54  
API #: 30-025-05043  
IP: pump 210 BO + 0 BW + 51 MCFD in 24 hrs  
TD: 12,016'  
PBSD: 11,730' (retainer at 11,792')  
Casing: **13-3/8" F-25 casing set at 315'**  
Cmt w/ 225 sx 8% gel + 100 sx neat. TOC surface, circ 50 sx  
**9-5/8" J-55, H-40, N-80 casing set at @ 4493', DV tool at 2275'**  
cmt 1st stage w/ 440 sx 8% gel + 100 sx neat  
cmt 2nd stage w/ 150 sx neat  
TOC 1840' (estimated)  
**5-1/2" N-80 (likely 17#) casing set at 12,015'**  
Cmt w/ 640 sx 4% gel w/ 640 ft3 perlite  
TOC 8450' FS per CBL ran 4/14/2000

Perfs: 11,641' - 11,681'  
11,700' - 11,760'  
11,766' - 11,788'  
11,800' - 11,828' squeezed  
11,854' - 11,872' squeezed  
11,874' - 11,877' squeezed  
11,904' - 11,927' squeezed  
11,939' - 11,953' squeezed

**Tubing Detail:**

(1) jt 2-7/8" EUE 8rd N-80 tbg w/ BP on btm	32.52
(1) 2-7/8" x 4' perf sub	4.10
(1) 2-3/8" Mechanical SN w/ 1" x 20' GA	0.75
(1) jt 2-7/8" EUE 8rd L-80 1850 IPC	32.51
(6) jts 2-7/8" 6.5# EUE 8rd L-80	196.68
(1) 2-7/8" x 5-1/2" TAC w/ 40k shear	3.25
(185) jts 2-7/8" 6.5# EUE 8rd L80	6049.26
(165) jts 2-7/8" 6.5# EUE 8rd L-80	5319.10
Sub total	11638.17
Below KB	10.00
Tubing stretch	5.00
EOT @	11653.17

**Rod Detail:**

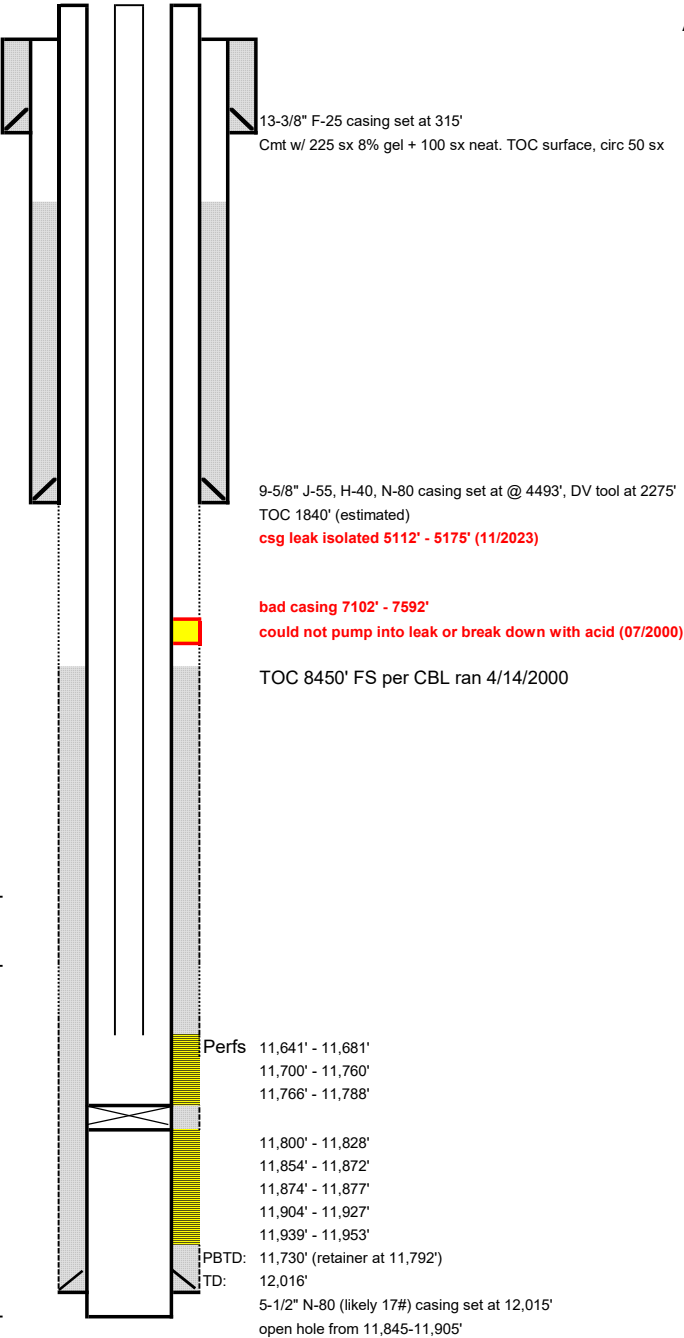
2" x 1.062" x 26' RHBM pump	28.00
(1) 1-1/2" Flexbar "C" sinker bar	25.00
(1) 1-5/8" x 3/4" 26k shear tool	0.75
(11) 1-1/2" Flexbar "C" sinker bars	275.00
(23) 3/4" D90 rods w/ 4 non-glass guides per rod	575.00
(91) 3/4" D90 rods	2275.00
(60) 7/8" D90 rods w/ 4 non-glass guides per rod	1500.00
(37) 7/8" D90 rods	925.00
(158) 1-1/4" fiberglass rods	5925.00
(2) 1-1/4" x 9' FG rod sub	18.00
(1) 1" x 6' N97 steel rod sub	6.00
(1) 1-1/4" x 26' polish rod w/ 1-1/2" x 16' liner	26.00
Total	11578.75

**Hole Sizes:**

17-1/2"	surface - 315'
12-1/4"	315' - 4500'
8-3/4"	4500' - 12,016'

12/2023- csg inspection log showed holes/bad csg at 5256', 5384', 6112', 7092', 7187', 7249', 7572'  
swabbed 7004' - RBP @ 10,500'. 2120' fluid entry in 14 hrs  
swabbed 4001' - RBP @ 7000'. 1700' fluid entry in 1 hr  
Decision made to run AS-1X packer and pump under packer due to casing in bad shape

As of: 11/13/23  
KB: 3887'  
GL: 3878'



## Viola Vasquez

---

**To:** Chris Hubbard  
**Subject:** FW: NM - Wingerd 10 T/A'd

---

**From:** Chris Hubbard <chrish@forl.com>  
**Sent:** Monday, March 17, 2025 4:13 PM  
**To:** Viola Vasquez <violav@forl.com>  
**Subject:** RE: NM - Wingerd 10 T/A'd

We did not attempt a pressure test because the casing is in bad shape. The plan was to get the CIBP set to protect the formation, then regroup with a P&A procedure and apply for that with the OCD.

Well Name: **Wingerd #10**  
Operator: **Fasken Oil and Ranch, Ltd.**  
Location: 2310' FSL & 1650' FEL  
Sec 24, T12S, R37E  
Lea County, NM  
Compl.: 4/17/54  
API #: 30-025-05043  
IP: pump 210 BO + 0 BW + 51 MCFD in 24 hrs  
TD: 12,016'  
PBDT: 11,730' (retainer at 11,792')  
Casing: **13-3/8" F-25 casing set at 315'**  
Cmt w/ 225 sx 8% gel + 100 sx neat. TOC surface, circ 50 sx  
**9-5/8" J-55, H-40, N-80 casing set at @ 4493', DV tool at 2275'**  
cmt 1st stage w/ 440 sx 8% gel + 100 sx neat  
cmt 2nd stage w/ 150 sx neat  
TOC 1840' (estimated)  
**5-1/2" N-80 (likely 17#) casing set at 12,015'**  
Cmt w/ 640 sx 4% gel w/ 640 ft3 perlite  
TOC 8450' FS per CBL ran 4/14/2000

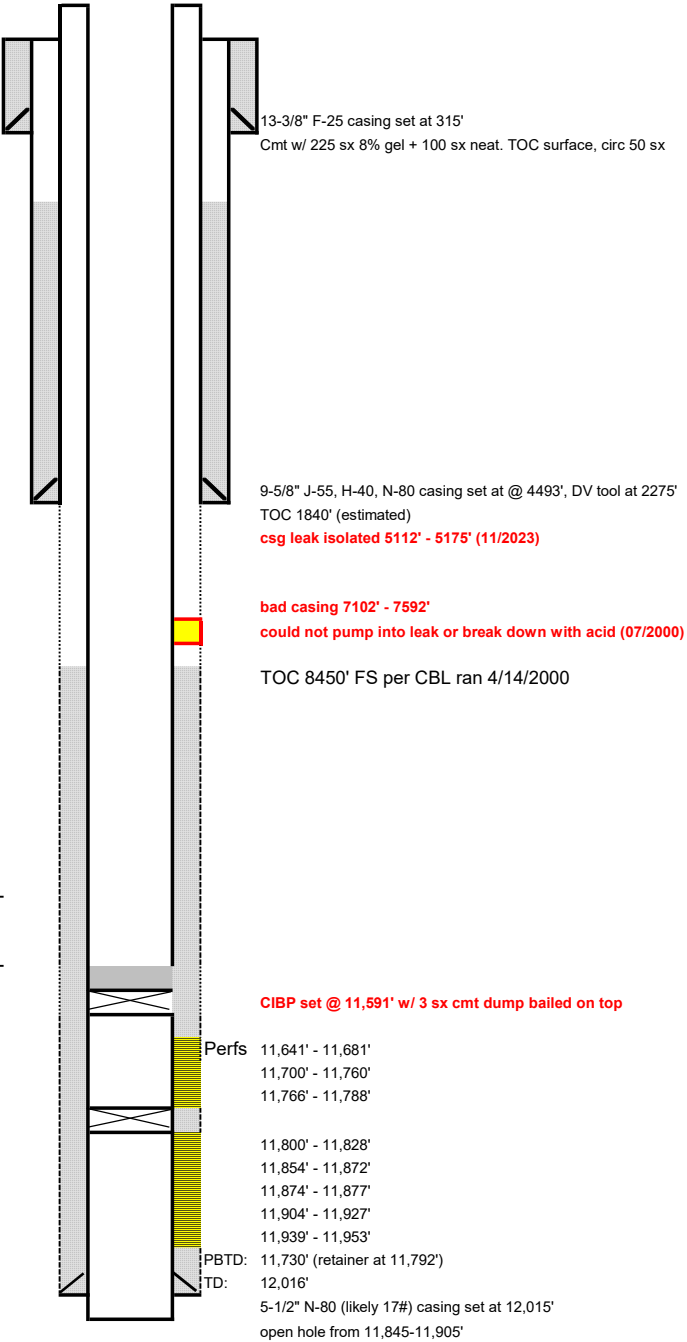
Perfs: 11,641' - 11,681'  
11,700' - 11,760'  
11,766' - 11,788'  
11,800' - 11,828' squeezed  
11,854' - 11,872' squeezed  
11,874' - 11,877' squeezed  
11,904' - 11,927' squeezed  
11,939' - 11,953' squeezed

**Tubing Detail:**

(1) jt 2-7/8" EUE 8rd N-80 tbg w/ BP on btm	32.52
(1) 2-7/8" x 4' perf sub	4.10
(1) 2-3/8" Mechanical SN w/ 1" x 20' GA	0.75
(1) jt 2-7/8" EUE 8rd L-80 1850 IPC	32.51
(6) jts 2-7/8" 6.5# EUE 8rd L-80	196.68
(1) 2-7/8" x 5-1/2" TAC w/ 40k shear	3.25
(185) jts 2-7/8" 6.5# EUE 8rd L80	6049.26
(165) jts 2-7/8" 6.5# EUE 8rd L-80	5319.10
Sub total	11638.17
Below KB	10.00
Tubing stretch	5.00
EOT @	11653.17

Hole Sizes:

17-1/2"	surface - 315'
12-1/4"	315' - 4500'
8-3/4"	4500' - 12,016'



12/2023- csg inspection log showed holes/bad csg at 5256', 5384', 6112', 7092', 7187', 7249', 7572'  
swabbed 7004' - RBP @ 10,500'. 2120' fluid entry in 14 hrs  
swabbed 4001' - RBP @ 7000'. 1700' fluid entry in 1 hr  
Decision made to run AS-1X packer and pump under packer due to casing in bad shape

01/2025- pulled well for parted rods. Observed packer stuck. Cut above packer and POW with tubing  
Observed tight spot in casing at 2645'. Swaged out tight spot and reciprocated string mill prior to RIW with fishing tools  
Fished out packer with light drag through tight spot. Set CIBP @ 11,591'. Dump bailed 3 sx cmt on top

Sante Fe Main Office  
Phone: (505) 476-3441

General Information  
Phone: (505) 629-6116

Online Phone Directory  
<https://www.emnrd.nm.gov/oed/contact-us>

State of New Mexico  
Energy, Minerals and Natural Resources  
Oil Conservation Division  
1220 S. St Francis Dr.  
Santa Fe, NM 87505

CONDITIONS

Action 471243

CONDITIONS

Operator: FASKEN OIL & RANCH LTD 6101 Holiday Hill Rd Midland, TX 79707	OGRID: 151416
	Action Number: 471243
	Action Type: [C-103] NOI Temporary Abandonment (C-103I)

CONDITIONS

Created By	Condition	Condition Date
gcordero	Passing MIT test in accordance with 19.15.26.11 or 19.15.25.12-14 NMAC will be required at time of work.	6/5/2025