

Well Name: FEASEL A	Well Location: T28N / R10W / SEC 34 / NWNW / 36.622752 / -107.888394	County or Parish/State: SAN JUAN / NM
Well Number: 3R	Type of Well: CONVENTIONAL GAS WELL	Allottee or Tribe Name:
Lease Number: NMSF046563	Unit or CA Name:	Unit or CA Number:
US Well Number: 3004529765	Operator: HILCORP ENERGY COMPANY	

Subsequent Report

Sundry ID: 2852590

Type of Submission: Subsequent Report	Type of Action: Plug and Abandonment
Date Sundry Submitted: 05/13/2025	Time Sundry Submitted: 12:11
Date Operation Actually Began: 05/08/2025	

Actual Procedure: Hilcorp Energy Company plugged and abandoned the subject well on 05/09/2025 per the attached daily reports & schematic.

SR Attachments

Actual Procedure

- Hilcorp_Feasel_A_3R_CBL_20250513121015.pdf
- Feasel_A_3R_P_A_SR_20250513121001.pdf

Well Name: FEASEL A	Well Location: T28N / R10W / SEC 34 / NWNW / 36.622752 / -107.888394	County or Parish/State: SAN JUAN / NM
Well Number: 3R	Type of Well: CONVENTIONAL GAS WELL	Allottee or Tribe Name:
Lease Number: NMSF046563	Unit or CA Name:	Unit or CA Number:
US Well Number: 3004529765	Operator: HILCORP ENERGY COMPANY	

Operator

I certify that the foregoing is true and correct. Title 18 U.S.C. Section 1001 and Title 43 U.S.C. Section 1212, make it a crime for any person knowingly and willfully to make to any department or agency of the United States any false, fictitious or fraudulent statements or representations as to any matter within its jurisdiction. Electronic submission of Sundry Notices through this system satisfies regulations requiring a

Operator Electronic Signature: TAMMY JONES	Signed on: MAY 13, 2025 12:10 PM
Name: HILCORP ENERGY COMPANY	
Title: Regulatory Compliance Specialist	
Street Address: 382 ROAD 3100	
City: AZTEC	State: NM
Phone: (505) 324-5185	
Email address: TAJONES@HILCORP.COM	

Field

Representative Name:		
Street Address:		
City:	State:	Zip:
Phone:		
Email address:		

BLM Point of Contact

BLM POC Name: MATTHEW H KADE	BLM POC Title: Petroleum Engineer
BLM POC Phone: 5055647736	BLM POC Email Address: MKADE@BLM.GOV
Disposition: Accepted	Disposition Date: 05/13/2025
Signature: Matthew Kade	

FEASEL A 3R

30.045.29765

PLUG & ABANDON

5/8/2025 – MIRU. CHECK PRESSURES, SICP 0 PSI. SITP 0 PSI. SIBH 0 PSI. BDW 0 MIN. FT BOP, ND WH, NU BOP. RU RF & TG EQUIP. RU DRAKE WL RIH W/ GR TO 1950'. LD GR. RIH W/CIBP. S&R CIBP @ 1933'. RD WL. TALLY & PUP. RIH OED TO CIBP. EST CIRC W/ 10 BBLS FW. PUMP 15 TOTAL. PSI TEST CSG TO 560# FOR 30 MINS. TEST OK. TOO. RU DRAKE WL. RIH W/ CBL TOOL. LOG WELL FROM 1933'- TO SURF. RD WL. TIH OED TO CIBP. **PLUG #1** FROM 1933'-1332' (601') (1.25"X 2 7/8") M&P 18 SKS CLASS G, 15.8PPG, 1.15YIELD, 3.6BLSRY, 2.1MIX, 2.5 DIS. LD TOC REVERSE OUT. TOO. SIW. WOC. SDFN. **(CRYSTAL MARTINEZ BLM REP)**

5/9/2025 – CHECK PRESSURES, SITP 0 PSI. SICP 0 PSI. SIBH 0 PSI. BDW 0 MIN. TIH TAG TOC @ 1390'. **(BLM REP APPROVED TAG)** LD TBG TO PLUG #2. **PLUG #2** FROM 1130'- 635' (495') (1.25"X 2 7/8") M&P 14 SKS OF CLASS G, 15.8PPG, 1.15YIELD, 1.6MIX, 2.86BLSRY, 1.2DIS. LD TOC. REVERSE OUT. LD TBG TO SURF PLUG. **PLUG #3** FROM 182'-0' M&P 6 SKS OF CLASS G, 15.8PPG, 1.15YIELD, 1.2BLSRY, .8MIX, CIRC CMT TO SURF. LD ALL TBG. **(BLM REP MONTY GOMEZ)** RD RF & TBG EQUIP. ND BOP. NU WH. DIG OUT WH. CUT & REMOVE WH. TOC @ 26'. WELD & INSTALL DHM @ 36", 37', 22" N / 107", 53', 17" W. RU POLY PIPE. SPOT BP FROM 26' - 0'. M&P 25 SKS, CLASS G, 15.8PPG, 1.15YIELD CIRC CMT TO SURF. RD. **RIG RELEASED @ 13:30 ON 5/9/2025.**

From: Kuehling, Monica, EMNRD <monica.kuehling@emnrd.nm.gov>
Sent: Monday, January 13, 2025 2:47 PM
To: Kade, Matthew H; Joe Zimmerman; Rennick, Kenneth G
Cc: Farmington Regulatory Techs; John LaMond; Lee Murphy; Clay Padgett
Subject: RE: [EXTERNAL] P&A Revision Request for Hilcorp's FEASEL A 3R (API: 3004529765)

CAUTION: External sender. DO NOT open links or attachments from UNKNOWN senders.

NMOCD approves below

Thank you

Monica Kuehling
Compliance Officer Supervisor
Deputy Oil and Gas Inspector
New Mexico Oil Conservation Division
North District
Cell Phone: 505-320-0243
Email - monica.kuehling@emnrd.nm.gov

From: Kade, Matthew H <mkade@blm.gov>
Sent: Monday, January 13, 2025 10:55 AM
To: Joe Zimmerman <Joseph.Zimmerman@hilcorp.com>; Kuehling, Monica, EMNRD <monica.kuehling@emnrd.nm.gov>; Rennick, Kenneth G <krennick@blm.gov>
Cc: Farmington Regulatory Techs <FarmingtonRegulatoryTechs@hilcorp.com>; John LaMond <jlamond@hilcorp.com>; Lee Murphy <lmurphy@hilcorp.com>; Clay Padgett <cpadgett@hilcorp.com>
Subject: Re: [EXTERNAL] P&A Revision Request for Hilcorp's FEASEL A 3R (API: 3004529765)

The BLM approves of the updated procedure.

Thanks,

Matthew Kade
Petroleum Engineer
BLM - Farmington Field Office
6251 College Blvd
Farmington, NM 87402
Office: (505) 564-7736

From: Joe Zimmerman <Joseph.Zimmerman@hilcorp.com>
Sent: Monday, January 13, 2025 10:30 AM
To: 'Kuehling, Monica, EMNRD' <monica.kuehling@emnrd.nm.gov>; Rennick, Kenneth G <krennick@blm.gov>; Kade, Matthew H <mkade@blm.gov>
Cc: Farmington Regulatory Techs <FarmingtonRegulatoryTechs@hilcorp.com>; John LaMond <jlamond@hilcorp.com>; Lee

Murphy <lmurphy@hilcorp.com>; Clay Padgett <cpadgett@hilcorp.com>; Joe Zimmerman <Joseph.Zimmerman@hilcorp.com>
Subject: [EXTERNAL] P&A Revision Request for Hilcorp's FEASEL A 3R (API: 3004529765)

This email has been received from outside of DOI - Use caution before clicking on links, opening attachments, or responding.

Good morning, Monica and Matthew,

Hilcorp plans to work on the FEASEL A 3R (API: 3004529765) P&A in the near future and would like to get approval of the updated procedure based on the COA's.

I have attached the approved NOI as well as the updated procedure and schematics.

Below are the changes to the procedure, which consist of changes to formation tops and cement plug depths.

- **PLUG #1: 17sx of Class G Cement (15.8 PPG, 1.15 yield); PC Perfs @ 1,943' | PC Top @ 1,930' | FRD Top @ 1,450':.**
Pump a 17 sack balanced cement plug inside the 2-7/8" casing (est. **TOC @ +/- 1,350'** & est. **BOC @ +/- 1,933'**). Wait on Cement for 4 hours, tag TOC w/ work string.
 - **Increased top of cement to account for BLM's Fruitland top.**
- **PLUG #2: 13sx of Class G Cement (15.8 PPG, 1.15 yield); KRD Top @ 1,080' | OJO Top @ 790':**
Pump a 13 sack balanced cement plug inside the 2-7/8" casing (est. **TOC @ +/- 690'** & est. **BOC @ +/- 1,130'**). *Note cement plug lengths & volumes account for excess.
 - **Increased bottom and top of cement to account for BLM's Kirtland and Ojo Alamo tops.**
- **PLUG #3: 6sx of Class G Cement (15.8 PPG, 1.15 yield); Surf. Casing Shoe @ 132':**
Pump a 6 sack balanced cement plug inside the 2-7/8" casing (est. **TOC @ +/- 0'** & est. **BOC @ +/- 182'**). *Note cement plug lengths & volumes account for excess.
 - **Brought bottom of cement higher due to BLM having Nacimiento at surface. Bottom of cement now 50' below surface casing shoe.**

JOB PROCEDURES

1. Contact NMOCD and BLM (where applicable) 24 hours prior to MIRU.
2. Hold pre-job safety meeting. Verify cathodic is off. Comply with all NMOCD, BLM, and HEC safety and environmental regulations.
3. MIRU service rig and associated equipment; NU and test BOP.
4. Set a 2-7/8" CIBP at +/- 1,933' to isolate the PC Perfs.
5. Load the well as needed. Pressure test the casing above the plug to 560 psig.
6. RU Wireline. Run CBL. Record Top of Cement. All subsequent plugs below are subject to change pending CBL results.
7. PU & TIH w/ work string to +/- 1,933'.
8. **PLUG #1: 17sx of Class G Cement (15.8 PPG, 1.15 yield); PC Perfs @ 1,943' | PC Top @ 1,930' | FRD Top @ 1,450':**
Pump a 17 sack balanced cement plug inside the 2-7/8" casing (est. **TOC @ +/- 1,350'** & est. **BOC @ +/- 1,933'**). Wait on Cement for 4 hours, tag 1 string. *Note cement plug lengths & volumes account for excess.
9. POOH w/ work string to +/- 1,130'.
10. **PLUG #2: 13sx of Class G Cement (15.8 PPG, 1.15 yield); KRD Top @ 1,080' | OJO Top @ 790':**
Pump a 13 sack balanced cement plug inside the 2-7/8" casing (est. **TOC @ +/- 690'** & est. **BOC @ +/- 1,130'**). *Note cement plug lengths & volumes account for excess.
11. POOH w/ work string to +/- 182'.
12. **PLUG #3: 6sx of Class G Cement (15.8 PPG, 1.15 yield); Surf. Casing Shoe @ 132':**
Pump a 6 sack balanced cement plug inside the 2-7/8" casing (est. **TOC @ +/- 0'** & est. **BOC @ +/- 182'**). *Note cement plug lengths & volumes account for excess.
13. ND BOP, cut off casing below casing flange. Top off cement in surface casing annulus, if needed. Install a P&A marker with cement to comply with r
Rig down, move off location, cut off anchors, and restore location.

Do the NMOCD and BLM approve the updated procedure?

Thank you,

Joe Zimmerman

Hilcorp Energy Company

Operations Engineer – RMR

Joseph.zimmerman@hilcorp.com

C: 208.610.8631

O: 346.237.2054

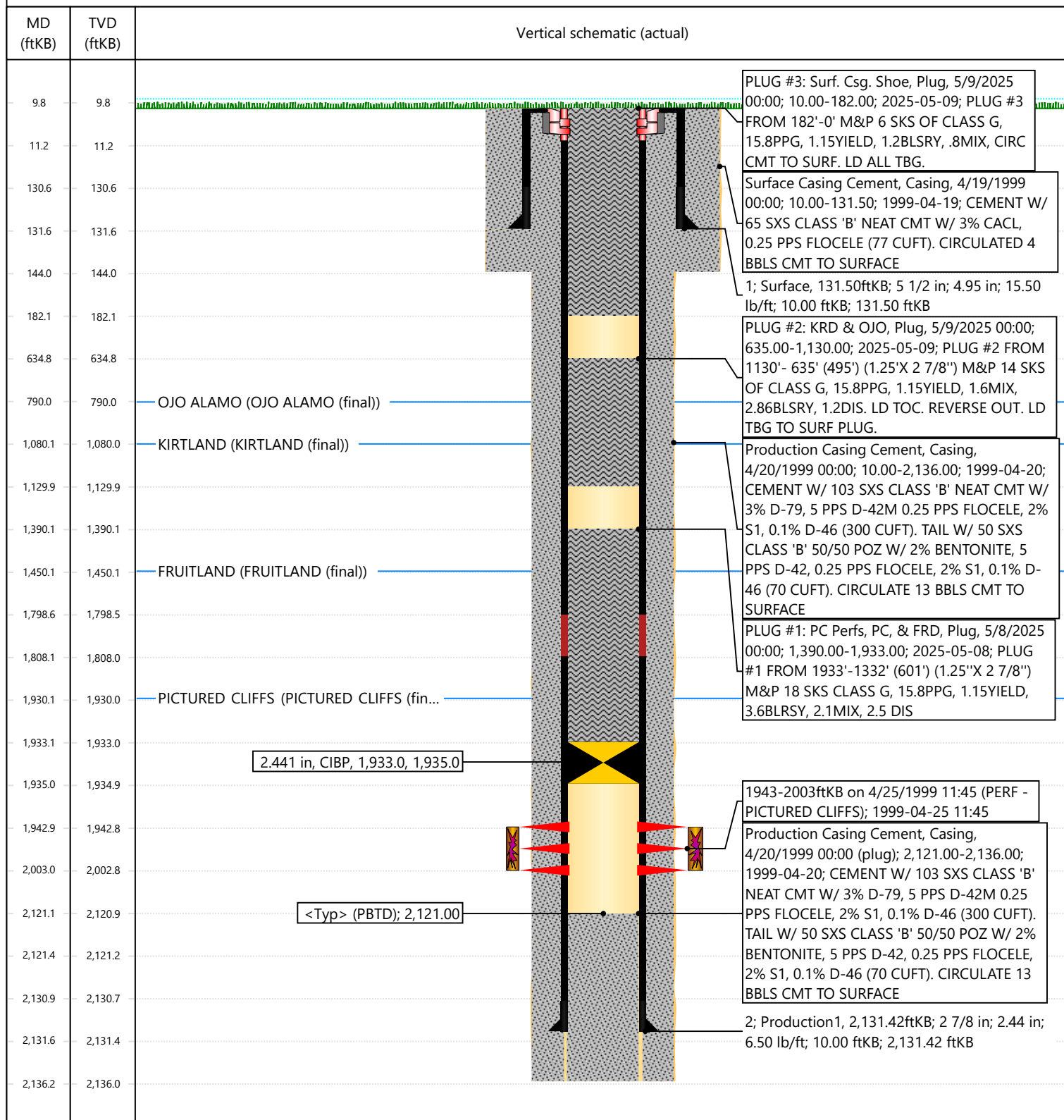


Current Schematic - Version 3

Well Name: FEASEL A #3R

API / UWI 3004529765	Surface Legal Location 034-028N-010W-D	Field Name	Route 0708	State/Province NEW MEXICO	Well Configuration Type Vertical
Ground Elevation (ft) 5,956.00	Original KB/RT Elevation (ft) 5,966.00	Tubing Hanger Elevation (ft)	RKB to GL (ft) 10.00	KB-Casing Flange Distance (ft)	KB-Tubing Hanger Distance (ft)
Tubing Strings					
Run Date	Set Depth (ftKB)	String Max Nominal OD (in)	String Min Nominal ID (in)	Weight/Length (lb/ft)	Original Spud Date

Original Hole, FEASEL A #3R [Vertical]



Sante Fe Main Office
Phone: (505) 476-3441

General Information
Phone: (505) 629-6116

Online Phone Directory
<https://www.emnrd.nm.gov/oed/contact-us>

State of New Mexico
Energy, Minerals and Natural Resources
Oil Conservation Division
1220 S. St Francis Dr.
Santa Fe, NM 87505

CONDITIONS

Action 461576

CONDITIONS

Operator: HILCORP ENERGY COMPANY 1111 Travis Street Houston, TX 77002	OGRID: 372171
	Action Number: 461576
	Action Type: [C-103] Sub. Plugging (C-103P)

CONDITIONS

Created By	Condition	Condition Date
mkuehling	CBL in log file - well plugged 5/9/2025	6/9/2025