

U.S. Department of the Interior  
BUREAU OF LAND MANAGEMENT

<b>Well Name:</b> ANGEL PEAK 1	<b>Well Location:</b> T27N / R10W / SEC 1 / NESE / 36.602405 / -107.841722	<b>County or Parish/State:</b> SAN JUAN / NM
<b>Well Number:</b> 20S	<b>Type of Well:</b> OTHER	<b>Allottee or Tribe Name:</b>
<b>Lease Number:</b> NMSF077384	<b>Unit or CA Name:</b>	<b>Unit or CA Number:</b>
<b>US Well Number:</b> 3004532431	<b>Operator:</b> HILCORP ENERGY COMPANY	

### Subsequent Report

**Sundry ID:** 2855101

**Type of Submission:** Subsequent Report

**Type of Action:** Plug and Abandonment

**Date Sundry Submitted:** 05/29/2025

**Time Sundry Submitted:** 07:01

**Date Operation Actually Began:** 05/21/2025

**Actual Procedure:** Hilcorp Energy Company has plugged and abandoned the subject well on 5/27/2025 per the attached daily reports and schematic

### SR Attachments

#### Actual Procedure

ANGEL\_PEAK\_1\_20S\_SR\_P\_A\_BLM\_Submitted\_20250529070115.pdf

Well Name: ANGEL PEAK 1

Well Location: T27N / R10W / SEC 1 /  
NESE / 36.602405 / -107.841722County or Parish/State: SAN  
JUAN / NM

Well Number: 20S

Type of Well: OTHER

Allottee or Tribe Name:

Lease Number: NMSF077384

Unit or CA Name:

Unit or CA Number:

US Well Number: 3004532431

Operator: HILCORP ENERGY  
COMPANY**Operator**

I certify that the foregoing is true and correct. Title 18 U.S.C. Section 1001 and Title 43 U.S.C. Section 1212, make it a crime for any person knowingly and willfully to make to any department or agency of the United States any false, fictitious or fraudulent statements or representations as to any matter within its jurisdiction. Electronic submission of Sundry Notices through this system satisfies regulations requiring a

Operator Electronic Signature: PRISCILLA SHORTY

Signed on: MAY 29, 2025 07:01 AM

Name: HILCORP ENERGY COMPANY

Title: Regulatory Technician

Street Address: 382 ROAD 3100

City: AZTEC

State: NM

Phone: (505) 324-5188

Email address: PSHORTY@HILCORP.COM

**Field**

Representative Name:

Street Address:

City:

State:

Zip:

Phone:

Email address:

**BLM Point of Contact**

BLM POC Name: MATTHEW H KADE

BLM POC Title: Petroleum Engineer

BLM POC Phone: 5055647736

BLM POC Email Address: MKADE@BLM.GOV

Disposition: Accepted

Disposition Date: 05/29/2025

Signature: Matthew Kade

**ANGEL PEAK 1 20S****30.045.32431****PLUG AND ABANDONMENT**

**5/21/2025** - RU RIG & CMT EQUIP. CK PSI: TBG-5#, CSG-80#, BH-5#, BDW 10 MINS. UNSEAT ROD PUMP. RD HORSES HEAD. RD & MOVE PUMP JACK & CEMENT PAD. LD 94 3/4" RODS, 2 SB, 1 ROD PUMP. XOVER TO TBG EQUIP. FT BOP. ND WH. NU BOP. RU RF & TBG EQUIP. PULL HANGER. LD 20 JTS 2 3/8" J55 TBG. SIW, SDFN.

**5/22/2025** - CK PSI; TBG-0#, CSG-10#, BH-0# BDW 1 MIN. LD 77 TOTAL JTS OF 2 3/8" J55 TBG. SWAP FLOATS. TALLY & PUP 64 JTS. RIH W/ 4.5" SM. TOOH, LD SM. TIH W/ 4.5" CR. S&R CR @ 2002'. CIRC CSG W/ 40 BBLS FW. PSI TEST CSG TO 560# PSI. NO TEST. EST A RATE OF 2.5BPM @ 350# PSI. **PLUG #1 FROM 2383' - 1874'. M&P 40 SKS CLASS G, 10 ABOVE / 30 BELOW, 2%CAL, 15.8PPG, 1.15YIELD, 8.1BLSRY, 4.7MIX, 7.1DIS.** LD TOC REVERSE OUT. TOOH LD STINGER. TIH TO 1200'. SIW. WOC. TIH **TAG TOC @ 1950'** (BLM REP DID NOT APPROVE TAG). ORDERS TO REVERSE OUT @ ORIGINAL TOC & SPOT 12 SKS FROM 1856' (ORDERS & APPROVAL PER BLM). LD TBG TO 1856'. REVERSE CIRC 25 BBLS FW. **PLUG #1A FROM 1856' - 1702' M&P 12 SKS (2 3/8" X 4.5") CLASS G, 15.8PPG, 1.15YIELD, 2.45BLSRY, 1.4MIX, 6.3 DIS.** LD TOC REVERSE OUT. TOOH. SIW, SDFN. **BILL DIERS, BLM REP, ON LOCATION.**

**5/23/2025** - CK PSI; TBG-0#, CSG-0#, BH-0#, BDW 0 MIN. TIH **TAG TOC @ 1742'**. EST CIRC W/ 5 BBLS FW. PSI TEST CSG TO 560#. NO TEST. TOOH LD TS. JSA. RU DRAKE WL. RIH W/ TG & PERF @ 1430' ATTEMPT TO EST RATE. NO RATE. ORDERS TO SPOT A BP FROM 1604' TO 1219' RD WL. **(HEC ENGINEER SENT EMAIL VERIFYING BLM & NMOCD'S APPROVAL TO PROCEED WITH INSIDE PLUG ONLY DUE TO UNABLE TO EST CIRC)** TIH W/ TS TO 1604'. **PLUG #2 FROM 1604' - 1219' (385') (2 3/8"X4.5") M&P 30 SKS CLASS G CMT, 15.8PPG, 2%CAL, 1.15YIELD, 6.1BLSRY. 3.5MIX, 4.8 DIS.** LD TOC REVERSE OUT. TOOH SIW. WOC. **TIH TAG TOC @ 1375'**. REVERSE CIRC W/ 15 BBLS FW. PSI TEST CSG. NO TEST. ORDERS TO SPOT 200' BP. (BLM REP APPORVED BP). **PLUG #2A FROM 1375'- 1170'. (205') (2 3/8"X4.5") M&P 16 SKS CLASS G, 15.8PPG, 1.15YIELD, 3.2BLSRY, 1.9MIX, 4DIS.** LD TOC REVERSE OUT. TOOH SIW, SDFN. **BILL DIERS, BLM REP, ON LOCATION.**

**5/27/2025** - CK PSI; TBG-0#, CSG-0#, BH-0#, BDW 0 MINS. TIH **TAG TOC @ 1163'**. LD TBG TO PLUG 3. TOOH LD TS. JSA. RU DRAKE WL. RIH W/ TG. PERF @ 658'. UNABLE TO EST RATE. CSG HELD 1200# PSI. ORDERS TO SPOT BP ACROSS PERF & WOC. RD WL. TIH W/ 4.5" CR. SET & RELEASE CR @ 708'. **(HEC ENGINEER SENT EMAIL VERIFYING BLM & NMOCD'S APPROVAL TO PROCEED WITH INSIDE PLUG ONLY DUE TO UNABLE TO EST CIRC)** **PLUG #3 FROM 708' - 400' (308')( 2 3/8"X 4.5") M&P 24 SKS CLASS G, 15.8PPG, 1.15 YIELD, 4.9BLSRY, 2.8MIX, 2%CAL, 1.52DIS.** LD TOC REVERSE OUT. LD ALL TBG. SIW. WOC. TIH **TAG TOC @ 460'**. EST CIRC 3 BBLS OR FW. PSI TEST CSG TO 560# PSI FOR 30 MINS. TEST OK. RU WL. RIH W/ TG. PERF @ 189' EST BH CIRC W. 4 BLS FW. PUMP 15 TOTAL. RD WL. PUP TO 239'. **PLUG #4 FROM 234'-0' (234')(2 3/8"X4.5"X6.25"OH) M&P 76**

**ANGEL PEAK 1 20S**

**30.045.32431**

**PLUG AND ABANDONMENT**

**SKS CLASS G, 15.8PPG, 1.15YIELD, 2%CAL. 15.5BLSRY, 9.0MIX. CIRC CMNT TO SURF.**  
LD ALL TBG. SIW. WOC. RD RF & TBG EQUIP. ND BOP, NU WH. DIG OUT WH. CUT &  
REMOVE WH. FIND TOC @ 46'CSG & 54'BACKSIDE. WELD & INSTALL DHM @ 36.60258 N /  
107.84173. TOP OFF CELLAR & CSG W/ 26 SKS. CLASS G, 15.8PPG, 1.15YIELD. RD RIG &  
CMNT EQUIP. DRAIN EQUIP. CLEAN & SECURE LOC. DEBRIEF CREW. CREW TRAVEL TO  
YARD. **BILL DIERS, BLM REP, ON LOCATION.**

**WELL WAS PLUGGED AND ABANDONED ON 5/27/2025**

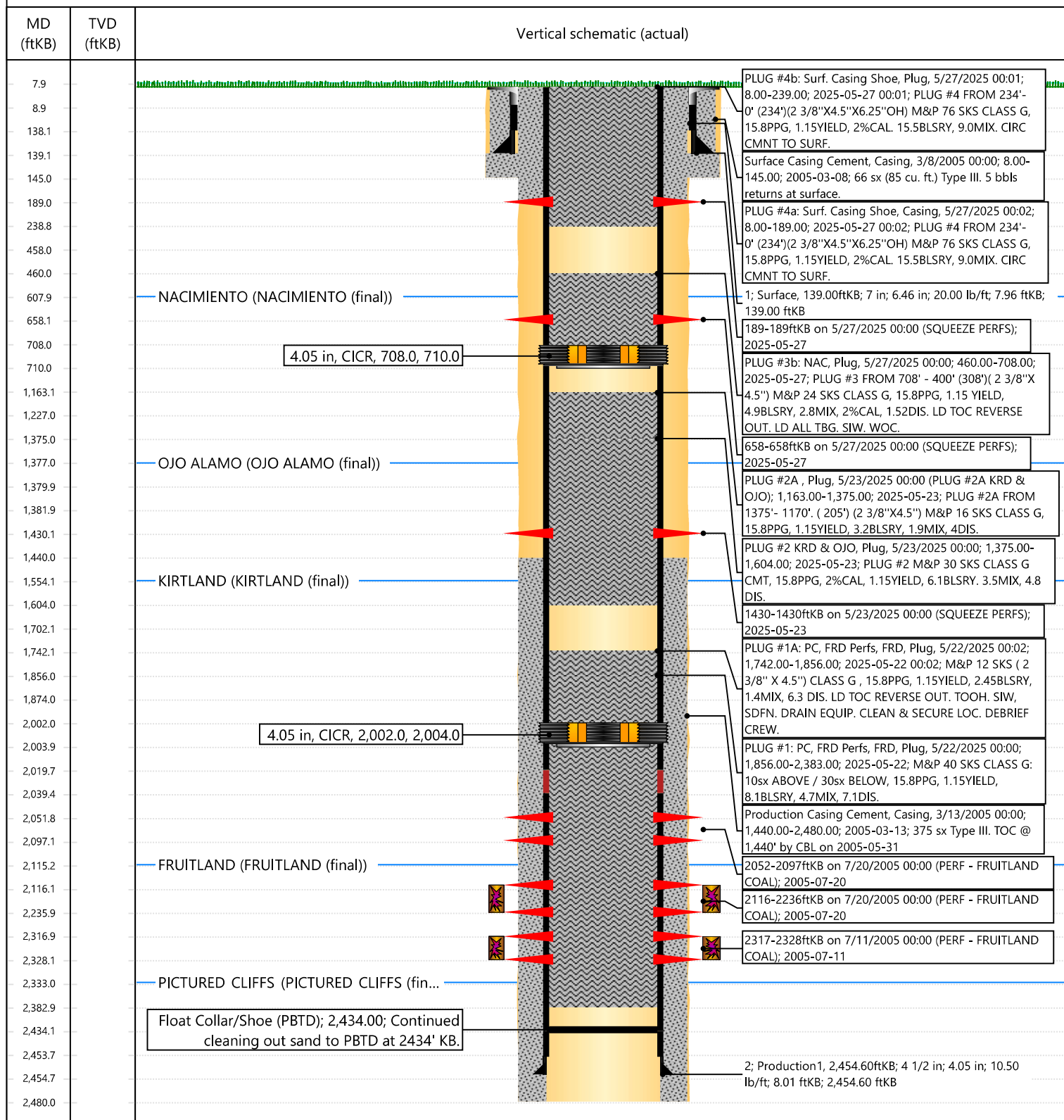


## Current Schematic - Version 3

Well Name: ANGEL PEAK 1 #20S

API / UWI 3004532431	Surface Legal Location I-1-27N-10W	Field Name BASIN FRUITLAND COAL (GAS)	Route 0808	State/Province NEW MEXICO	Well Configuration Type Vertical
Ground Elevation (ft) 6,376.00	Original KB/RT Elevation (ft) 6,384.00	Tubing Hanger Elevation (ft)	RKB to GL (ft) 8.00	KB-Casing Flange Distance (ft)	KB-Tubing Hanger Distance (ft)
<b>Tubing Strings</b>					
Run Date 5/23/2008 17:00	Set Depth (ftKB) 2,433.20	String Max Nominal OD (in) 2 3/8	String Min Nominal ID (in) 2.00	Weight/Length (lb/ft) 4.70	Original Spud Date 3/8/2005 08:00

## Original Hole, ANGEL PEAK 1 #20S [Vertical]



**Priscilla Shorty**

---

**From:** Kuehling, Monica, EMNRD <monica.kuehling@emnrd.nm.gov>  
**Sent:** Tuesday, May 27, 2025 10:49 AM  
**To:** Kade, Matthew H; John LaMond; Rennick, Kenneth G  
**Cc:** Farmington Regulatory Techs; Clay Padgett; Lucero, Virgil S; Lee Murphy; Oscar Sanchez - (C); Joe Zimmerman; Diers, William B  
**Subject:** RE: [EXTERNAL] P&A Revision Based on COA's: ANGEL PEAK 1 20S (API:3004532431)

**CAUTION:** External sender. DO NOT open links or attachments from UNKNOWN senders.

NMOCD approved verbally procedure below

Thank you

Monica Kuehling  
Compliance Officer Supervisor  
Deputy Oil and Gas Inspector  
New Mexico Oil Conservation Division  
North District  
Cell Phone: 505-320-0243  
Email - monica.kuehling@emnrd.nm.gov

---

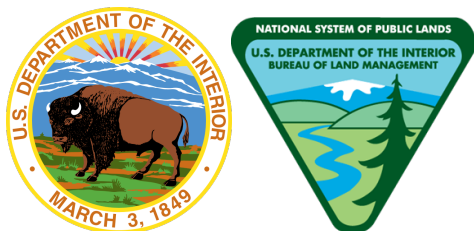
**From:** Kade, Matthew H <mkade@blm.gov>  
**Sent:** Tuesday, May 27, 2025 8:49 AM  
**To:** John LaMond <jlamond@hilcorp.com>; Kuehling, Monica, EMNRD <monica.kuehling@emnrd.nm.gov>; Rennick, Kenneth G <krennick@blm.gov>  
**Cc:** Farmington Regulatory Techs <FarmingtonRegulatoryTechs@hilcorp.com>; Clay Padgett <cpadgett@hilcorp.com>; Lucero, Virgil S <vlucero@blm.gov>; Lee Murphy <lmurphy@hilcorp.com>; Oscar Sanchez - (C) <Oscar.Sanchez@hilcorp.com>; Joe Zimmerman <Joseph.Zimmerman@hilcorp.com>; Diers, William B <WDiers@blm.gov>  
**Subject:** Re: [EXTERNAL] P&A Revision Based on COA's: ANGEL PEAK 1 20S (API:3004532431)

The BLM approves of the update to procedure.

Thanks,

**Matthew Kade**  
*Petroleum Engineer* | Bureau of Land Management

Farmington Field Office | 6251 College Blvd., Suite A / Farmington, NM 87402  
Office: 505-564-7736



**From:** John LaMond <[jlamond@hilcorp.com](mailto:jlamond@hilcorp.com)>

**Sent:** Tuesday, May 27, 2025 8:34 AM

**To:** Kade, Matthew H <[mkade@blm.gov](mailto:mkade@blm.gov)>; Kuehling, Monica, EMNRD <[monica.kuehling@emnrd.nm.gov](mailto:monica.kuehling@emnrd.nm.gov)>; Rennick, Kenneth G <[krennick@blm.gov](mailto:krennick@blm.gov)>

**Cc:** Farmington Regulatory Techs <[FarmingtonRegulatoryTechs@hilcorp.com](mailto:FarmingtonRegulatoryTechs@hilcorp.com)>; Clay Padgett <[cpadgett@hilcorp.com](mailto:cpadgett@hilcorp.com)>; Lucero, Virgil S <[vlucero@blm.gov](mailto:vlucero@blm.gov)>; Lee Murphy <[lmurphy@hilcorp.com](mailto:lmurphy@hilcorp.com)>; Oscar Sanchez - (C) <[Oscar.Sanchez@hilcorp.com](mailto:Oscar.Sanchez@hilcorp.com)>; Joe Zimmerman <[Joseph.Zimmerman@hilcorp.com](mailto:Joseph.Zimmerman@hilcorp.com)>; Diers, William B <[WDiers@blm.gov](mailto:WDiers@blm.gov)>

**Subject:** RE: [EXTERNAL] P&A Revision Based on COA's: ANGEL PEAK 1 20S (API:3004532431)

Good morning Monica and Kenny,

Per our discussion on the phone, Hilcorp pumped PLUG #2 as described below. After WOC we tagged TOC @ 1,375' (low). We proceeded to pump PLUG #2A (200' plug from 1,170' to 1,375'). We WOC & tagged that plug @ 1,163' MD this morning. We then proceed to perforate 50' below the Nacimiento @ 658'. Once again we were unable to establish a circulation rate and pressured up.

Moving forward, Hilcorp received verbal approval from the NMOCD & BLM to forego pumping the outside plug for the NAC, and proceed with pumping an inside plug only.

The updated plug design for PLUG #3 is as follows:

- **PLUG #3: 16sx of Class G Cement (15.8 PPG, 1.15 yield); NAC Top @ 608':**
  - TIH w/ tubing to 708' MD (50' below the perf @ 658')
  - Pump a 16 sack balanced cement plug inside the 4-1/2" casing (est. **TOC @ +/- 508'** & est. **BOC @ +/- 708'**).
  - WOC & Tag
- The remainder of the P&A procedure will be executed as previously approved.

Please let me know if you have any questions.

Thanks,

**John LaMond**

Operations Engineer – Technical Services  
Hilcorp Energy Company  
1111 Travis  
Houston, TX 77002

346-237-2210 (Office)  
832-754-9692 (Cell)  
[jlamond@hilcorp.com](mailto:jlamond@hilcorp.com)

---

**From:** Kade, Matthew H <[mkade@blm.gov](mailto:mkade@blm.gov)>

**Sent:** Friday, May 23, 2025 10:43 AM

**To:** John LaMond <[jlamond@hilcorp.com](mailto:jlamond@hilcorp.com)>; Kuehling, Monica, EMNRD <[monica.kuehling@emnrd.nm.gov](mailto:monica.kuehling@emnrd.nm.gov)>; Rennick, Kenneth G <[krennick@blm.gov](mailto:krennick@blm.gov)>

**Cc:** Farmington Regulatory Techs <[FarmingtonRegulatoryTechs@hilcorp.com](mailto:FarmingtonRegulatoryTechs@hilcorp.com)>; Clay Padgett <[cpadgett@hilcorp.com](mailto:cpadgett@hilcorp.com)>; Lucero, Virgil S <[vlucero@blm.gov](mailto:vlucero@blm.gov)>; Lee Murphy <[lmurphy@hilcorp.com](mailto:lmurphy@hilcorp.com)>; Oscar Sanchez - (C) <[Oscar.Sanchez@hilcorp.com](mailto:Oscar.Sanchez@hilcorp.com)>; Joe Zimmerman <[Joseph.Zimmerman@hilcorp.com](mailto:Joseph.Zimmerman@hilcorp.com)>; Diers, William B <[WDiers@blm.gov](mailto:WDiers@blm.gov)>

**Subject:** Re: [EXTERNAL] P&A Revision Based on COA's: ANGEL PEAK 1 20S (API:3004532431)

**CAUTION:** External sender. DO NOT open links or attachments from UNKNOWN senders.

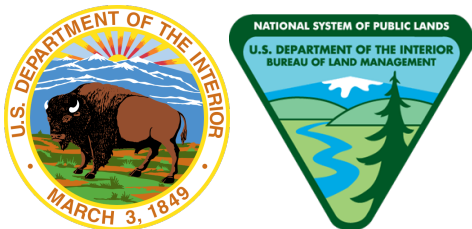
The BLM approves of the change to procedure.

Thanks,

**Matthew Kade**

*Petroleum Engineer* | Bureau of Land Management

Farmington Field Office | 6251 College Blvd., Suite A / Farmington, NM 87402  
Office: 505-564-7736



---

**From:** John LaMond <[jlamond@hilcorp.com](mailto:jlamond@hilcorp.com)>

**Sent:** Friday, May 23, 2025 9:35 AM

**To:** Kuehling, Monica, EMNRD <[monica.kuehling@emnrd.nm.gov](mailto:monica.kuehling@emnrd.nm.gov)>; Rennick, Kenneth G <[krennick@blm.gov](mailto:krennick@blm.gov)>

**Cc:** Farmington Regulatory Techs <[FarmingtonRegulatoryTechs@hilcorp.com](mailto:FarmingtonRegulatoryTechs@hilcorp.com)>; Clay Padgett <[cpadgett@hilcorp.com](mailto:cpadgett@hilcorp.com)>; Lucero, Virgil S <[vlucero@blm.gov](mailto:vlucero@blm.gov)>; Lee Murphy <[lmurphy@hilcorp.com](mailto:lmurphy@hilcorp.com)>; Oscar Sanchez - (C) <[Oscar.Sanchez@hilcorp.com](mailto:Oscar.Sanchez@hilcorp.com)>; Joe Zimmerman <[Joseph.Zimmerman@hilcorp.com](mailto:Joseph.Zimmerman@hilcorp.com)>; Kade, Matthew H <[mkade@blm.gov](mailto:mkade@blm.gov)>; John LaMond <[jlamond@hilcorp.com](mailto:jlamond@hilcorp.com)>

**Subject:** RE: [EXTERNAL] P&A Revision Based on COA's: ANGEL PEAK 1 20S (API:3004532431)

Good afternoon Monica and Kenny,

Per our conversation, Hilcorp perforated the 4-1/2" casing string @ 1,430' and were unable to establish circulation (pressured up).

Moving forward, Hilcorp received verbal approval from the NMOCD & BLM to forego pumping the outside plug for the KRD/OJO, and proceed with pumping an inside plug only.

The updated plug design for PLUG #2 is as follows:

- **PLUG #2: 26sx of Class G Cement (15.8 PPG, 1.15 yield); KRD Top @ 1,554' | OJO Top @ 1,377':**
  - TIH w/ tubing to 1,604' MD
  - Pump a 26 sack balanced cement plug inside the 4-1/2" casing (est. **TOC @ +/- 1,277'** & est. **BOC @ +/- 1,604'**).
  - WOC & Tag
- The remainder of the P&A procedure will be executed as previously approved.

Please let me know if you have any questions.

Thanks,

### John LaMond

Operations Engineer – Technical Services  
Hilcorp Energy Company  
1111 Travis  
Houston, TX 77002  
346-237-2210 (Office)  
832-754-9692 (Cell)  
[jlamond@hilcorp.com](mailto:jlamond@hilcorp.com)

---

**From:** Kuehling, Monica, EMNRD <[monica.kuehling@emnrd.nm.gov](mailto:monica.kuehling@emnrd.nm.gov)>

**Sent:** Friday, April 11, 2025 2:29 PM

**To:** Rennick, Kenneth G <[krennick@blm.gov](mailto:krennick@blm.gov)>; Joe Zimmerman <[Joseph.Zimmerman@hilcorp.com](mailto:Joseph.Zimmerman@hilcorp.com)>; Kade, Matthew H <[mkade@blm.gov](mailto:mkade@blm.gov)>

**Cc:** Farmington Regulatory Techs <[FarmingtonRegulatoryTechs@hilcorp.com](mailto:FarmingtonRegulatoryTechs@hilcorp.com)>; Clay Padgett <[cpadgett@hilcorp.com](mailto:cpadgett@hilcorp.com)>; Lucero, Virgil S <[vlucero@blm.gov](mailto:vlucero@blm.gov)>; Lee Murphy <[lmurphy@hilcorp.com](mailto:lmurphy@hilcorp.com)>; John LaMond <[jlamond@hilcorp.com](mailto:jlamond@hilcorp.com)>; Oscar Sanchez - (C) <[Oscar.Sanchez@hilcorp.com](mailto:Oscar.Sanchez@hilcorp.com)>

**Subject:** RE: [EXTERNAL] P&A Revision Based on COA's: ANGEL PEAK 1 20S (API:3004532431)

**CAUTION:** External sender. DO NOT open links or attachments from UNKNOWN senders.

NMOCD approves revisions

Thank you

Monica Kuehling  
Compliance Officer Supervisor  
Deputy Oil and Gas Inspector  
New Mexico Oil Conservation Division  
North District  
Cell Phone: 505-320-0243

Email - [monica.kuehling@emnrd.nm.gov](mailto:monica.kuehling@emnrd.nm.gov)

---

**From:** Rennick, Kenneth G <[krennick@blm.gov](mailto:krennick@blm.gov)>

**Sent:** Thursday, April 10, 2025 4:30 PM

**To:** Joe Zimmerman <[Joseph.Zimmerman@hilcorp.com](mailto:Joseph.Zimmerman@hilcorp.com)>; Kade, Matthew H <[mkade@blm.gov](mailto:mkade@blm.gov)>; Kuehling, Monica, EMNRD <[monica.kuehling@emnrd.nm.gov](mailto:monica.kuehling@emnrd.nm.gov)>

**Cc:** Farmington Regulatory Techs <[FarmingtonRegulatoryTechs@hilcorp.com](mailto:FarmingtonRegulatoryTechs@hilcorp.com)>; Clay Padgett <[cpadgett@hilcorp.com](mailto:cpadgett@hilcorp.com)>; Lucero, Virgil S <[vlucero@blm.gov](mailto:vlucero@blm.gov)>; Lee Murphy <[lmurphy@hilcorp.com](mailto:lmurphy@hilcorp.com)>; John LaMond <[jlamond@hilcorp.com](mailto:jlamond@hilcorp.com)>; Oscar Sanchez - (C) <[Oscar.Sanchez@hilcorp.com](mailto:Oscar.Sanchez@hilcorp.com)>

**Subject:** Re: [EXTERNAL] P&A Revision Based on COA's: ANGEL PEAK 1 20S (API:3004532431)

The BLM finds the proposed procedure appropriate.

Kenneth (Kenny) Rennick

Petroleum Engineer

Bureau of Land Management  
Farmington Field Office  
6251 College Blvd  
Farmington, NM 87402

Email: [krennick@blm.gov](mailto:krennick@blm.gov)

Mobile & Text: 505.497.0019

---

**From:** Joe Zimmerman <[Joseph.Zimmerman@hilcorp.com](mailto:Joseph.Zimmerman@hilcorp.com)>

**Sent:** Thursday, April 10, 2025 1:42 PM

**To:** Rennick, Kenneth G <[krennick@blm.gov](mailto:krennick@blm.gov)>; Kade, Matthew H <[mkade@blm.gov](mailto:mkade@blm.gov)>; Kuehling, Monica, EMNRD <[monica.kuehling@emnrd.nm.gov](mailto:monica.kuehling@emnrd.nm.gov)>

**Cc:** Farmington Regulatory Techs <[FarmingtonRegulatoryTechs@hilcorp.com](mailto:FarmingtonRegulatoryTechs@hilcorp.com)>; Clay Padgett <[cpadgett@hilcorp.com](mailto:cpadgett@hilcorp.com)>; Lee Murphy <[lmurphy@hilcorp.com](mailto:lmurphy@hilcorp.com)>; John LaMond <[jlamond@hilcorp.com](mailto:jlamond@hilcorp.com)>; Joe Zimmerman <[Joseph.Zimmerman@hilcorp.com](mailto:Joseph.Zimmerman@hilcorp.com)>; Oscar Sanchez - (C) <[Oscar.Sanchez@hilcorp.com](mailto:Oscar.Sanchez@hilcorp.com)>

**Subject:** [EXTERNAL] P&A Revision Based on COA's: ANGEL PEAK 1 20S (API:3004532431)

**This email has been received from outside of DOI - Use caution before clicking on links, opening attachments, or responding.**

Good afternoon,

Attached is the revised procedure for the **ANGEL PEAK 1 20S (API:3004532431)** updated to account for the BLM and NMOCD COA's. Below is a summary of the changes made.

#### TOC

- I agree with the BLM pick of 1,440' for TOC and have updated the schematic to reflect that. I don't think the Well Completion report of 300' is correct.
- I split out the Kirtland and Ojo to be it's own plug, and am proposing perforating 10' above TOC, and pumping the equivalent cement volume to TOC on the outside, and to 50' below the Kirtland for the inside plug.

#### Perforations

- There seems to be some inconsistencies in the perf depths between the Well Completions Report and the Daily Job logs, however, I added the interval from 2052' – 2097' and updated the CIBP placement and cement volumes to account for it in case they are there.

Please let me know if anyone has any questions or concerns. And please let me know if you approve of the revised procedure.

Thank you,

Joe Zimmerman  
Hilcorp Energy Company  
Operations Engineer – Technical Services  
[Joseph.zimmerman@hilcorp.com](mailto:Joseph.zimmerman@hilcorp.com)  
C: 208.610.8631  
O: 346.237.2054

Sante Fe Main Office  
Phone: (505) 476-3441

General Information  
Phone: (505) 629-6116

Online Phone Directory  
<https://www.emnrd.nm.gov/oed/contact-us>

State of New Mexico  
Energy, Minerals and Natural Resources  
Oil Conservation Division  
1220 S. St Francis Dr.  
Santa Fe, NM 87505

CONDITIONS

Action 468670

CONDITIONS

Operator: HILCORP ENERGY COMPANY 1111 Travis Street Houston, TX 77002	OGRID: 372171
	Action Number: 468670
	Action Type: [C-103] Sub. Plugging (C-103P)

CONDITIONS

Created By	Condition	Condition Date
mkuehling	CBL from 2005 in log file - well plugged 5/27/2025	6/9/2025