

Submit 1 Copy To Appropriate District
Office
District I – (575) 393-6161
1625 N. French Dr., Hobbs, NM 88240
District II – (575) 748-1283
811 S. First St., Artesia, NM 88210
District III – (505) 334-6178
1000 Rio Brazos Rd., Aztec, NM 87410
District IV – (505) 476-3460
1220 S. St. Francis Dr., Santa Fe, NM
87505

State of New Mexico
Energy, Minerals and Natural Resources

Form C-103
Revised August 1, 2011

OIL CONSERVATION DIVISION
1220 South St. Francis Dr.
Santa Fe, NM 87505

SUNDRY NOTICES AND REPORTS ON WELLS (DO NOT USE THIS FORM FOR PROPOSALS TO DRILL OR TO DEEPEN OR PLUG BACK TO A DIFFERENT RESERVOIR. USE "APPLICATION FOR PERMIT" (FORM C-101) FOR SUCH PROPOSALS.)		WELL API NO. 30-025-38576 and 30-025-42139
1. Type of Well: Oil Well <input type="checkbox"/> Gas Well <input checked="" type="checkbox"/> Other		5. Indicate Type of Lease STATE <input checked="" type="checkbox"/> FEE <input type="checkbox"/>
2. Name of Operator DCP Operating Company, LP		6. State Oil & Gas Lease No. V07530-0001
3. Address of Operator 6900 E. Layton Ave, Suite 900, Denver CO 80237		7. Lease Name or Unit Agreement Name Linam AGI
4. Well Location Unit Letter K; 1980 feet from the South line and 1980 feet from the West line Section 30 Township 18S Range 37E NMPM County Lea		8. Wells Number 1 and 2
11. Elevation (Show whether DR, RKB, RT, GR, etc.) 3736 GR		9. OGRID Number 36785
10. Pool name or Wildcat Wildcat		

12. Check Appropriate Box to Indicate Nature of Notice, Report or Other Data

NOTICE OF INTENTION TO:		SUBSEQUENT REPORT OF:	
PERFORM REMEDIAL WORK <input type="checkbox"/>	PLUG AND ABANDON <input type="checkbox"/>	REMEDIAL WORK <input type="checkbox"/>	ALTERING CASING <input type="checkbox"/>
TEMPORARILY ABANDON <input type="checkbox"/>	CHANGE PLANS <input type="checkbox"/>	COMMENCE DRILLING OPNS. <input type="checkbox"/>	P AND A <input type="checkbox"/>
PULL OR ALTER CASING <input type="checkbox"/>	MULTIPLE COMPL <input type="checkbox"/>	CASING/CEMENT JOB <input type="checkbox"/>	
DOWNHOLE COMMINGLE <input type="checkbox"/>			
OTHER: <input type="checkbox"/>		OTHER: Monthly Report pursuant to Workover C-103 <input checked="" type="checkbox"/>	

13. Describe proposed or completed operations. (Clearly state all pertinent details, and give pertinent dates, including estimated date of starting any proposed work). SEE RULE 19.15.7.14 NMAC. For Multiple Completions: Attach wellbore diagram of proposed completion or recompletion.

Report for the Month ending April 30, 2025 Pursuant to Workover C-103 for Linam AGI #1 and AGI #2


This is the 156th monthly submittal of data as agreed between DCP and OCD relative to injection pressure, TAG temperature, casing annulus pressure, and bottom hole data for Linam AGI #1. Since the data for both wells provide the best overall picture of the performance of the AGI system, the data for both wells are analyzed and presented herein even though that analysis is required only on a quarterly basis for AGI #2.

All flow was directed to AGI #1 for the entirety of April. Injection from AGI #2 was ceased on March 7, 2025, after AGI #2 was unable to satisfactorily perform a mechanical integrity test in February 2025. Repairs on wellhead valves for AGI #2 were completed and resolved on April 7, 2025, and a successful MIT overseen by NMOCDC representatives was conducted the same day, exhibiting stable annular pressure, confirming that the Linam AGI wells remain an excellent redundant well system for disposal of TAG for the DCP facilities.

Injection parameters being monitored for AGI #1 (used exclusively for April) were as follows (Figures 1, 2, 3, 4): Average Injection Rate: 170,844 scf/hr, Average TAG Injection Pressure: 1,417 psig, Average TAG Temperature: 103°F, Average Annulus Pressure: 357 psig, Average Pressure Differential: 1,061 psig. Bottom hole (BH) sensors provided the average BH pressure for the entire period of 4,235 psig and BH temperature of 132 °F (Figures 8 and 9).

The recorded injection parameters for AGI #2 for the month were: Average Injection Rate 0 scf/hr (No flow to AGI #2 for the month), Average Injection Pressure: 1,106 psig, Average TAG Temperature: 82°F, Average Annulus Pressure: 247 psig, average Pressure Differential: 860 psig (Figures 5, 6, 7). Despite the previous minor mechanical issues with AGI #2, the wells responded positively to the switchover in flow to AGI #1, and all injection parameters show the correlative behavior of annular pressure with flowrate and injection pressure with temperature, confirming the wells are functioning properly.

The Linam AGI #1 and AGI #2 wells are serving as a safe, effective, and environmentally friendly system to dispose of, and permanently sequester, Class II wastes consisting of H₂S and CO₂. The Linam AGI Facility permanently sequestered 5,092 Metric Tons of CO₂ for this month (Figure 10). The two wells provide the required redundancy to the plant that allows for operation with disposal to either or both wells. I hereby certify that the information above is true and complete to the best of my knowledge and belief.

SIGNATURE  TITLE Consultant to DCP Operating Company, LP/ Geolex, Inc. DATE 5/1/2025
Type or print name Alberto A. Gutierrez, RG E-mail address: aag@geolex.com PHONE: 505-842-8000

For State Use Only

APPROVED BY: _____ TITLE _____ DATE _____

Conditions of Approval (if any):

Figure #1: Linam AGI #1 and #2 Combined TAG Injection Flow Rate

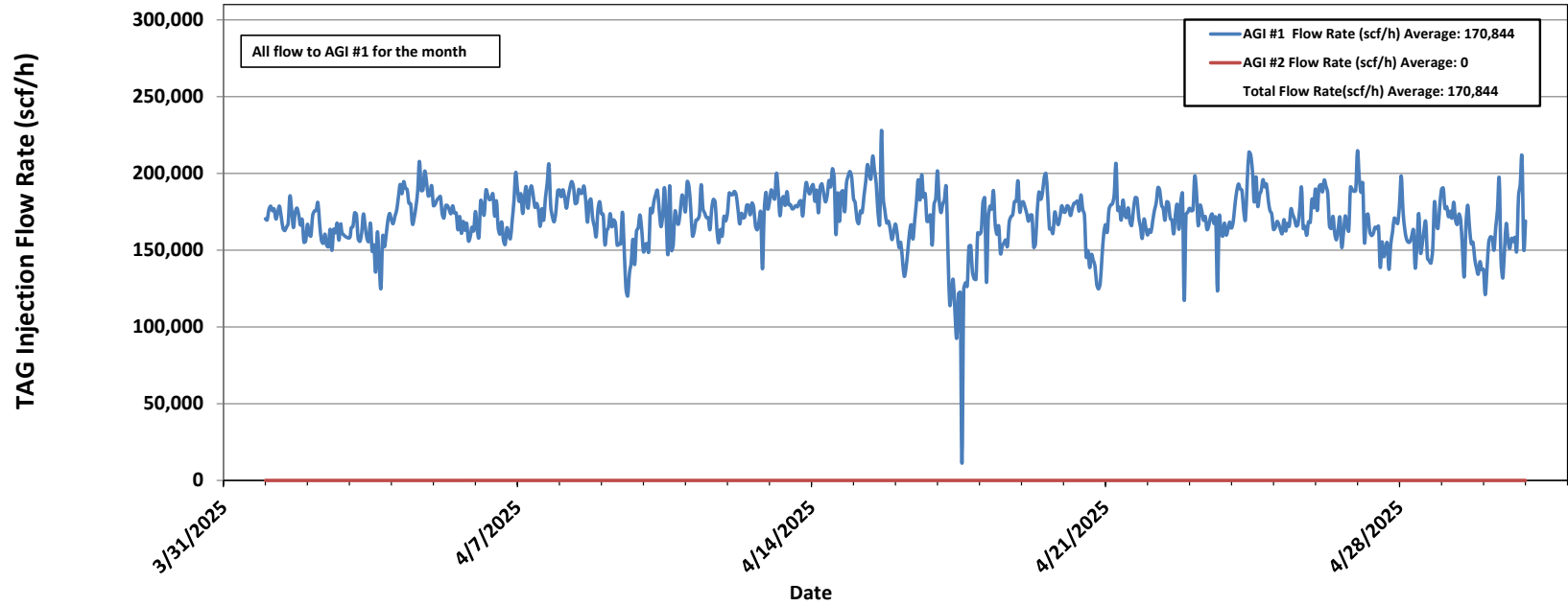


Figure #2: Linam AGI #1 Surface TAG Injection Pressure and Annular Pressure

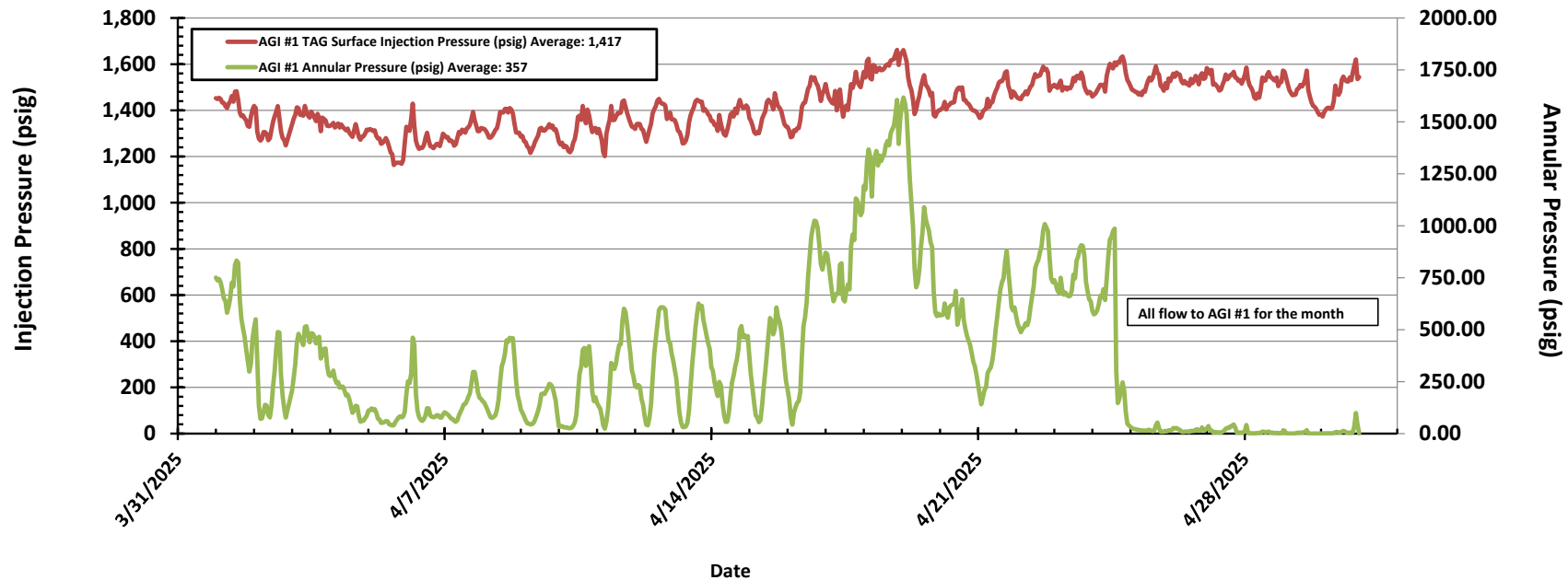


Figure #3: Linam AGI #1 TAG Injection Pressure, Casing Annulus Pressure and TAG Injection Temperature

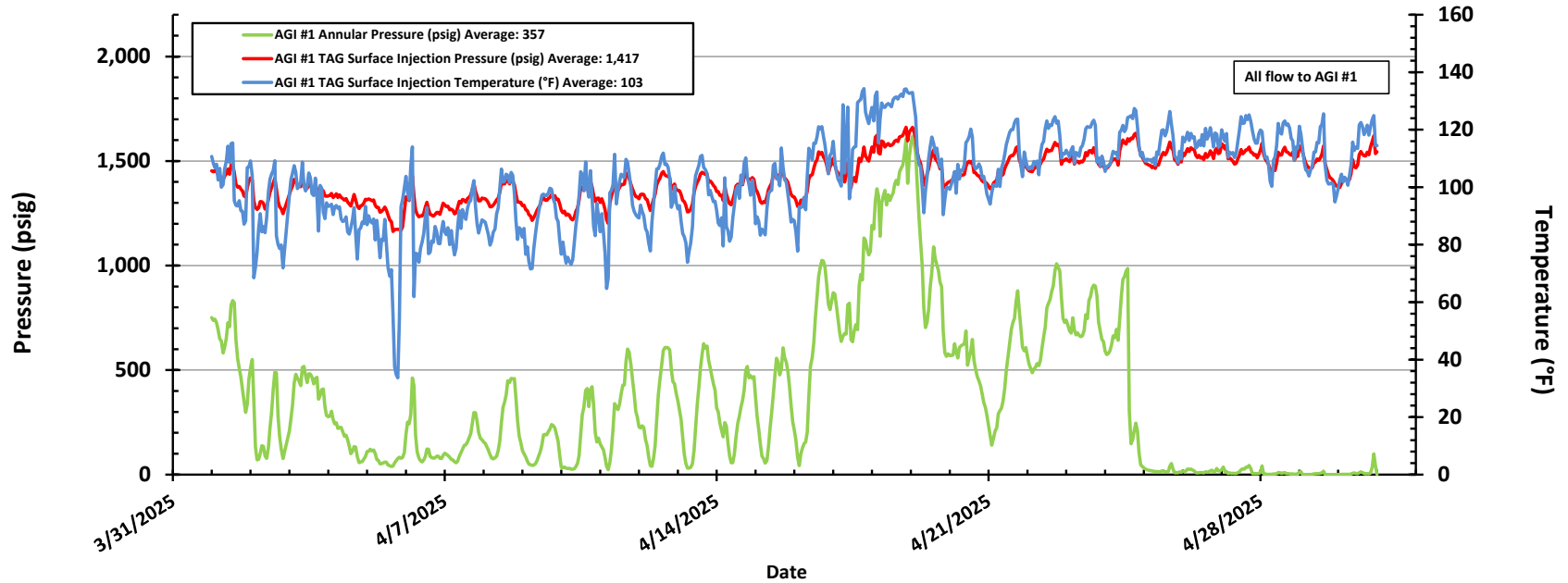


Figure #4: Linam AGI #1 TAG Injection Pressure and Casing Annular Pressure Differential

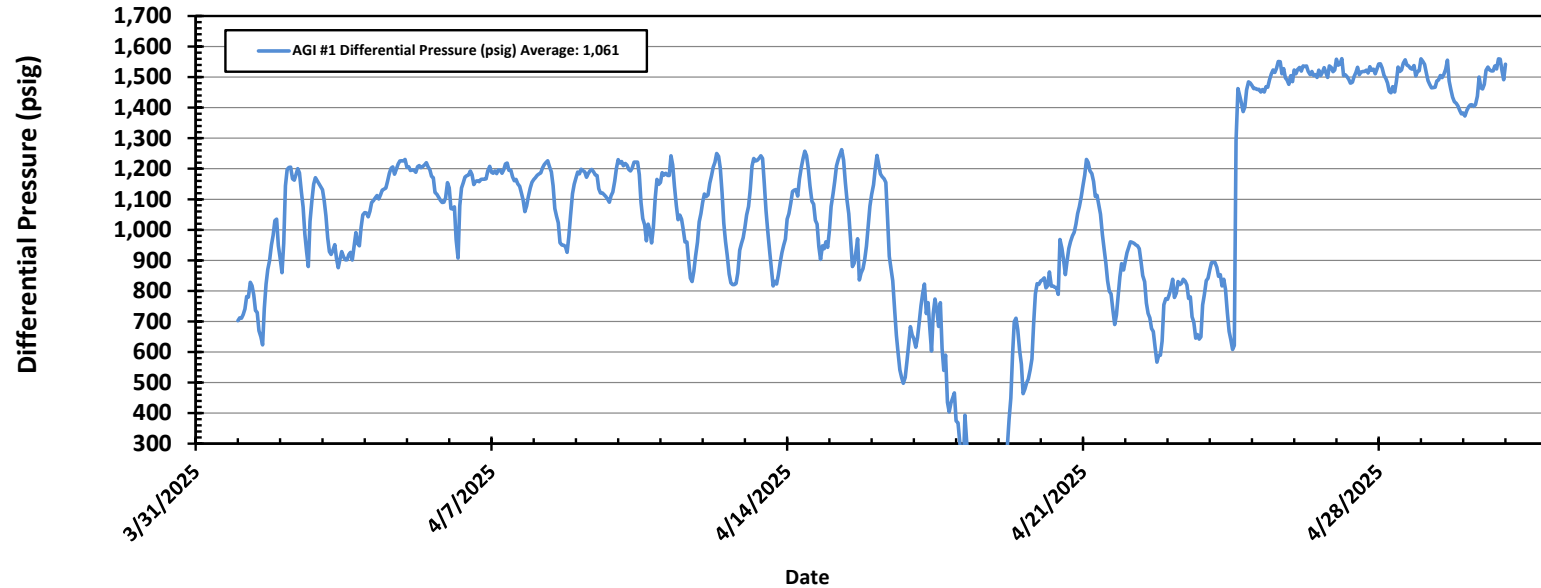


Figure #5: Linam AGI #2 Injection Pressure, Rate and Casing Annulus Pressure

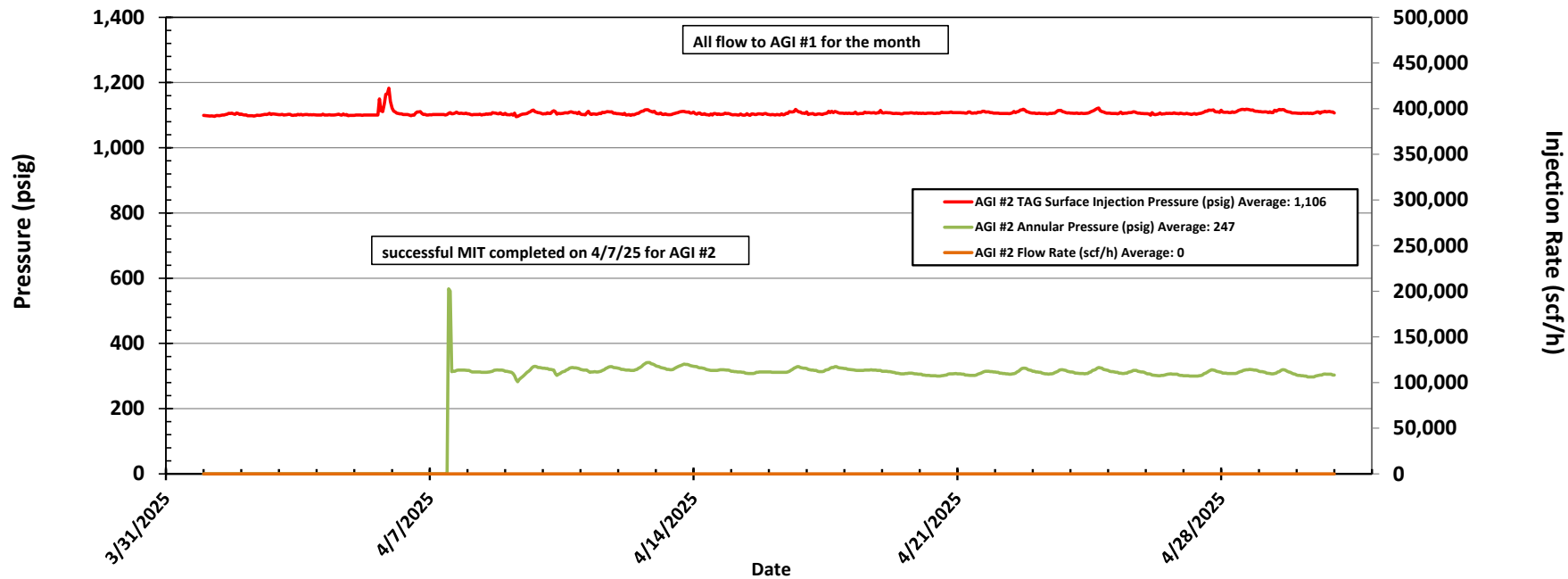


Figure #6: Linam AGI #2 TAG Injection Pressure, Casing Annulus Pressure and TAG Injection Temperature

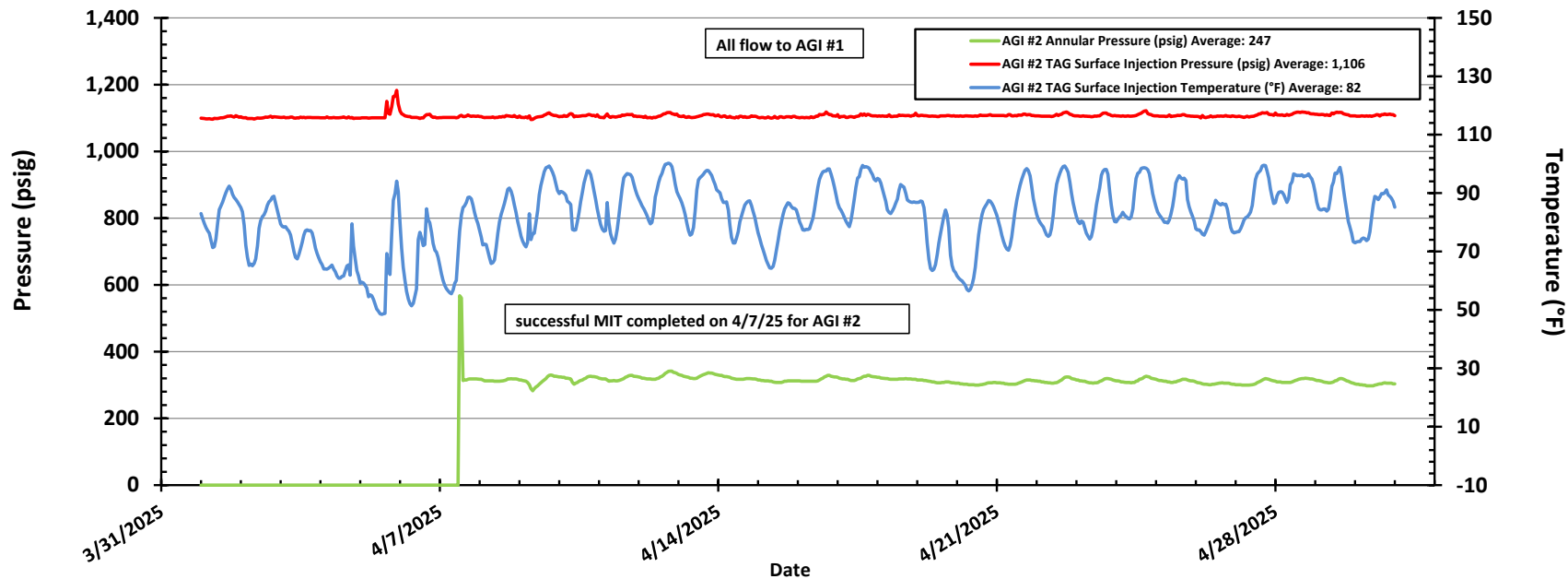


Figure #7: Linam AGI #2 TAG Injection Pressure and Casing Annular Pressure Differential (psig)

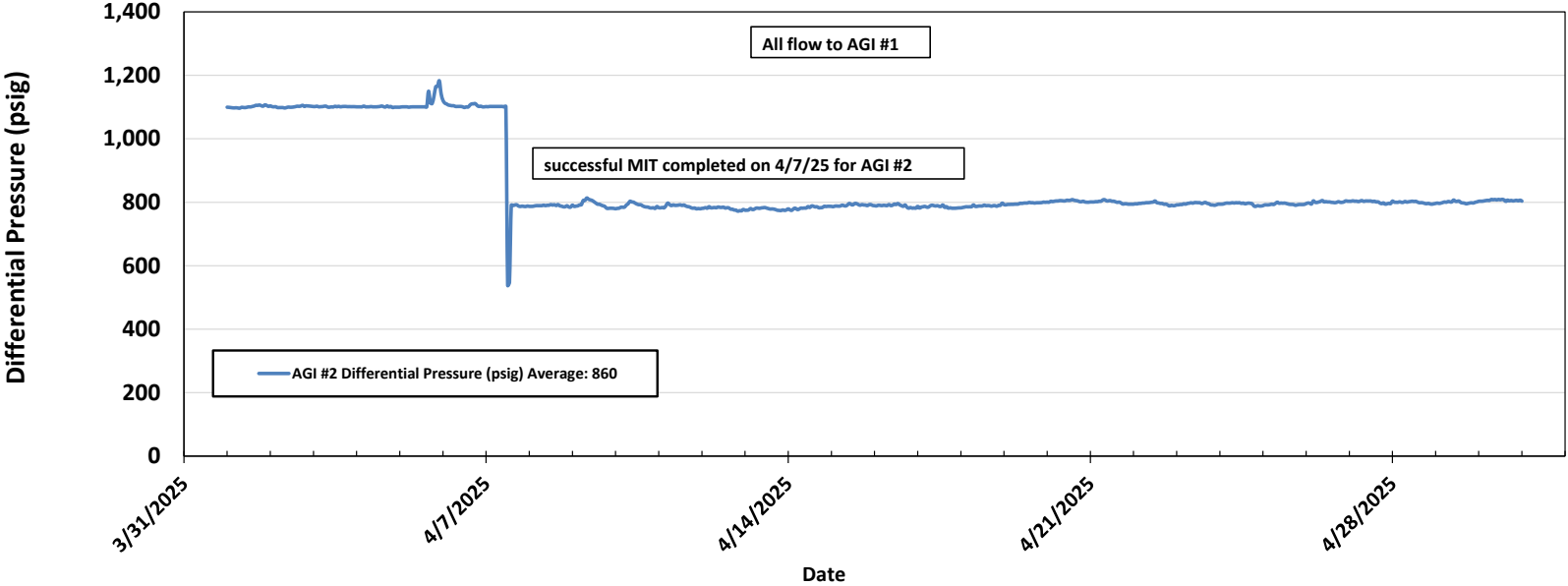


Figure #8: Linam AGI #1 Bottom Hole Pressure and Temperature

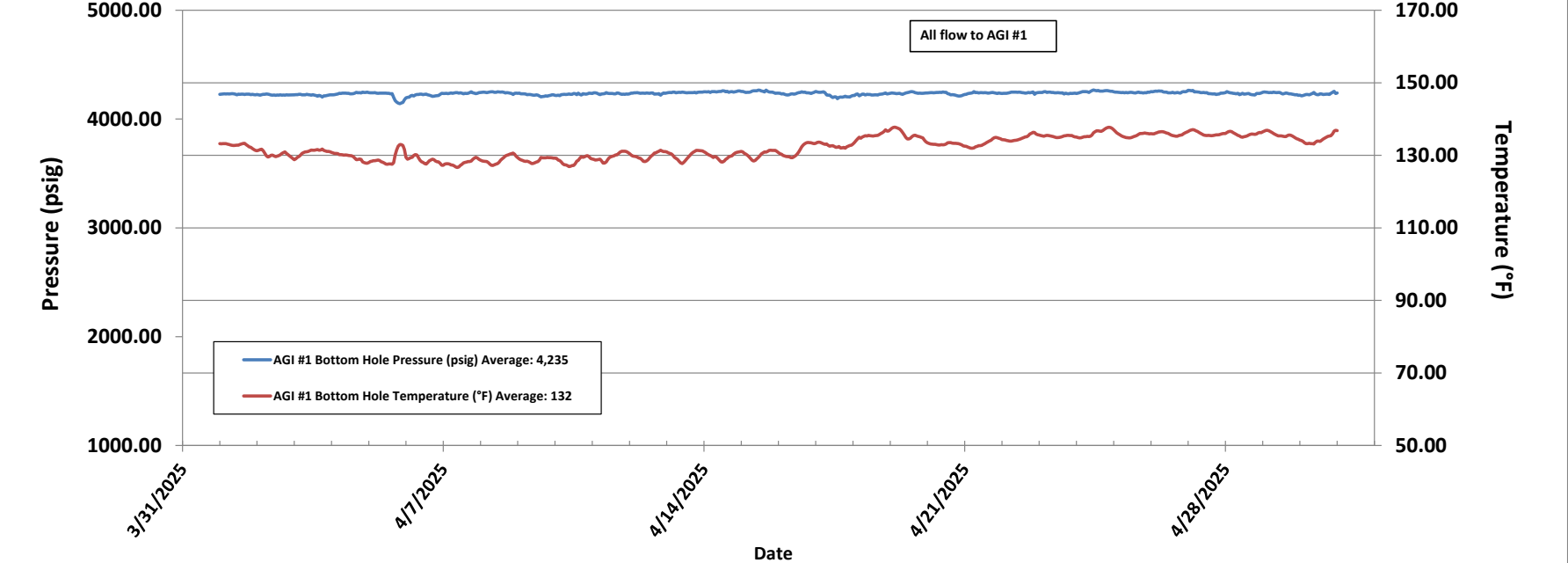
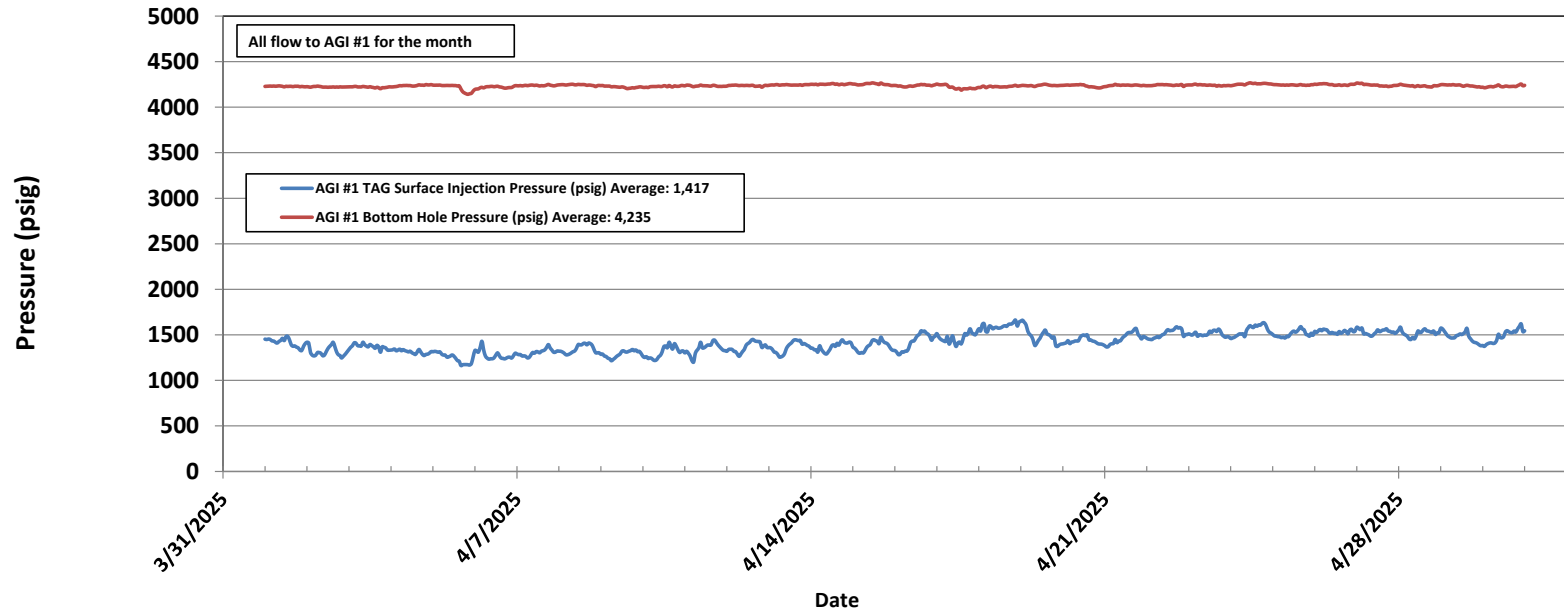
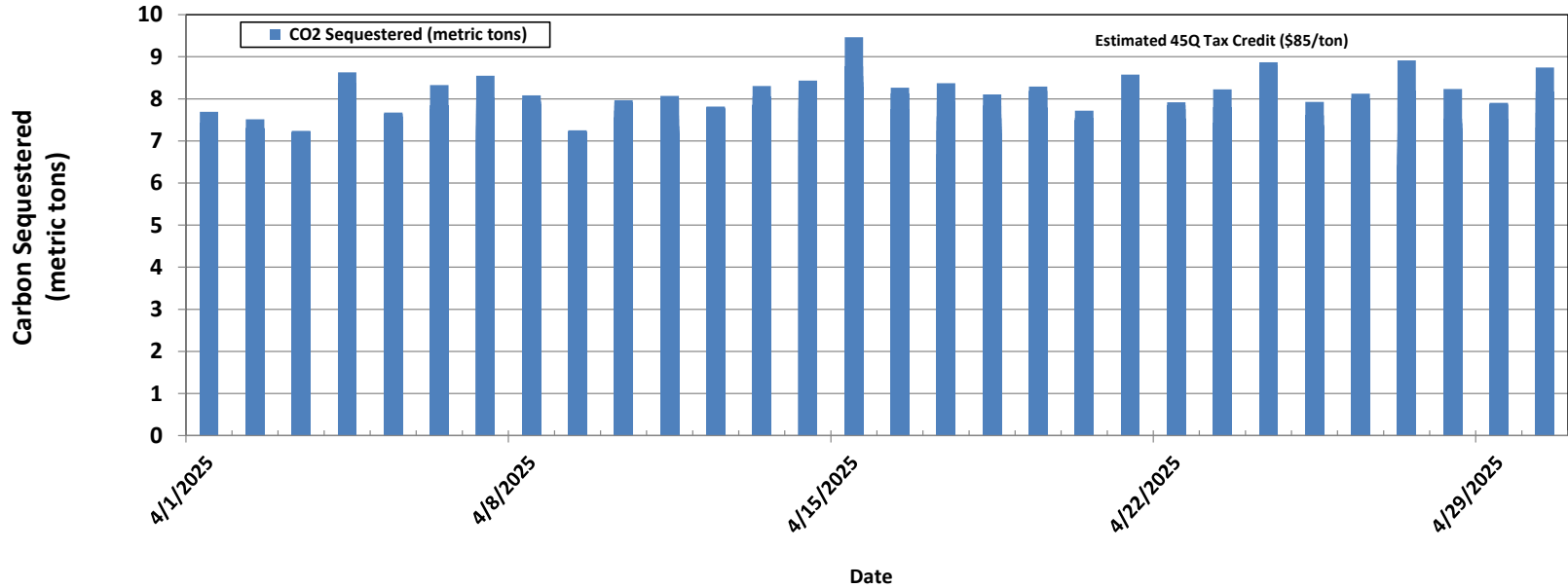


Figure #9: Linam AGI #1 Surface Injection Pressure and Bottom Hole Pressure



CO2 Sequestered (metric tons)

Figure #10: Linam AGI Facility Daily Metric Tons of Carbon Sequestered



DCP LINAM AGI #1
WELLBORE SCHEMATIC (WORKOVER)

Location: 1980' FSL, 1980' FWL
STR 30-T18S-R37E
County, St.: LEA, NEW MEXICO

SURFACE CASING:
13 3/8", 48.00#/ft, H40, STC at 530'

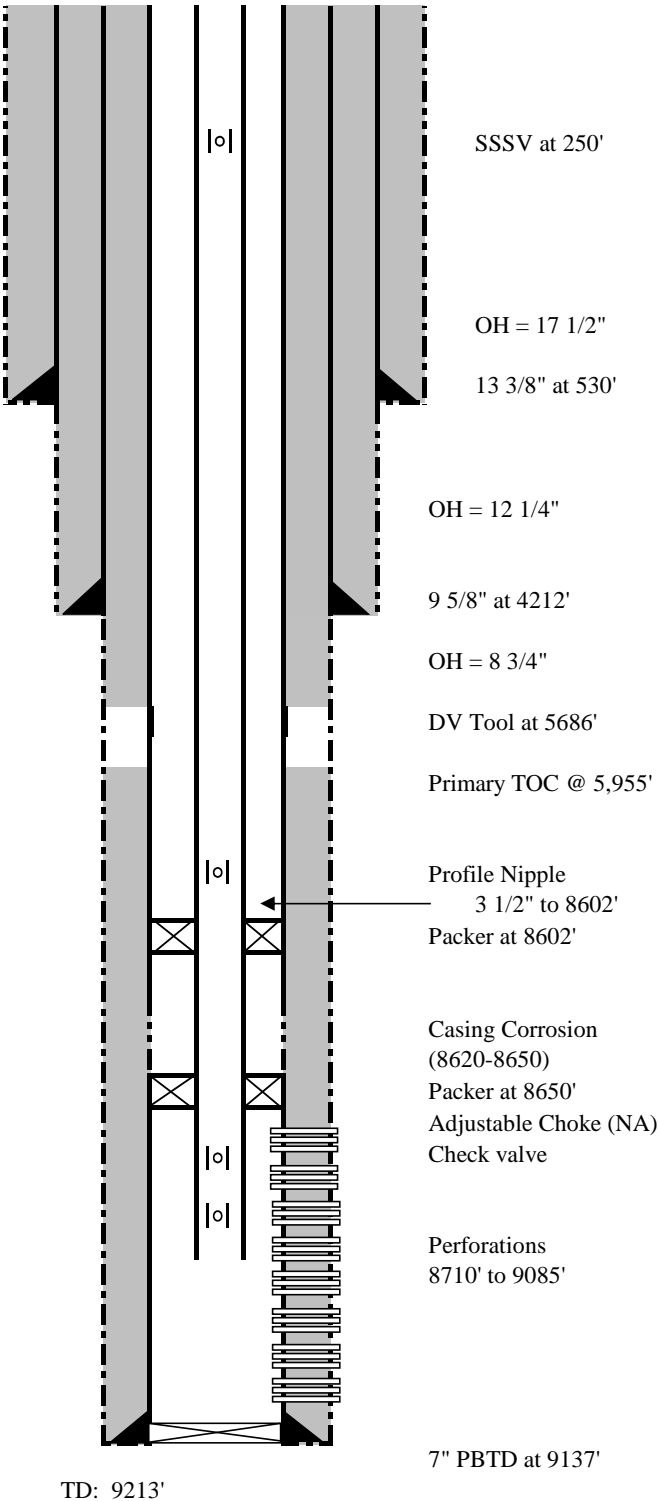
INTERMEDIATE CASING:
9 5/8", 40.00#/ft, J55, LTC at 4212'

PRODUCTION CASING:
7", 26.00#/ft, L80, STC at 9200'
PBTD = 9137'

TUBING:
Subsurface Safety Valve at 250 ft
3 1/2", 9.2#/ft, L80, Hunting SLF to 8304'
3 1/2", 9.2 #/ft., G3 CRA, VAMTOP from 8302' to 8602'
3 1/2", 9.2 #/ft., G3 CRA, VAMTOP 20'-30' between packers

PACKER:
Permanent Production Packer (2)
Upper Packer Placement Subject to Pipe Scanner Results
of the 7" Casing
Adjustable Choke
Check valve

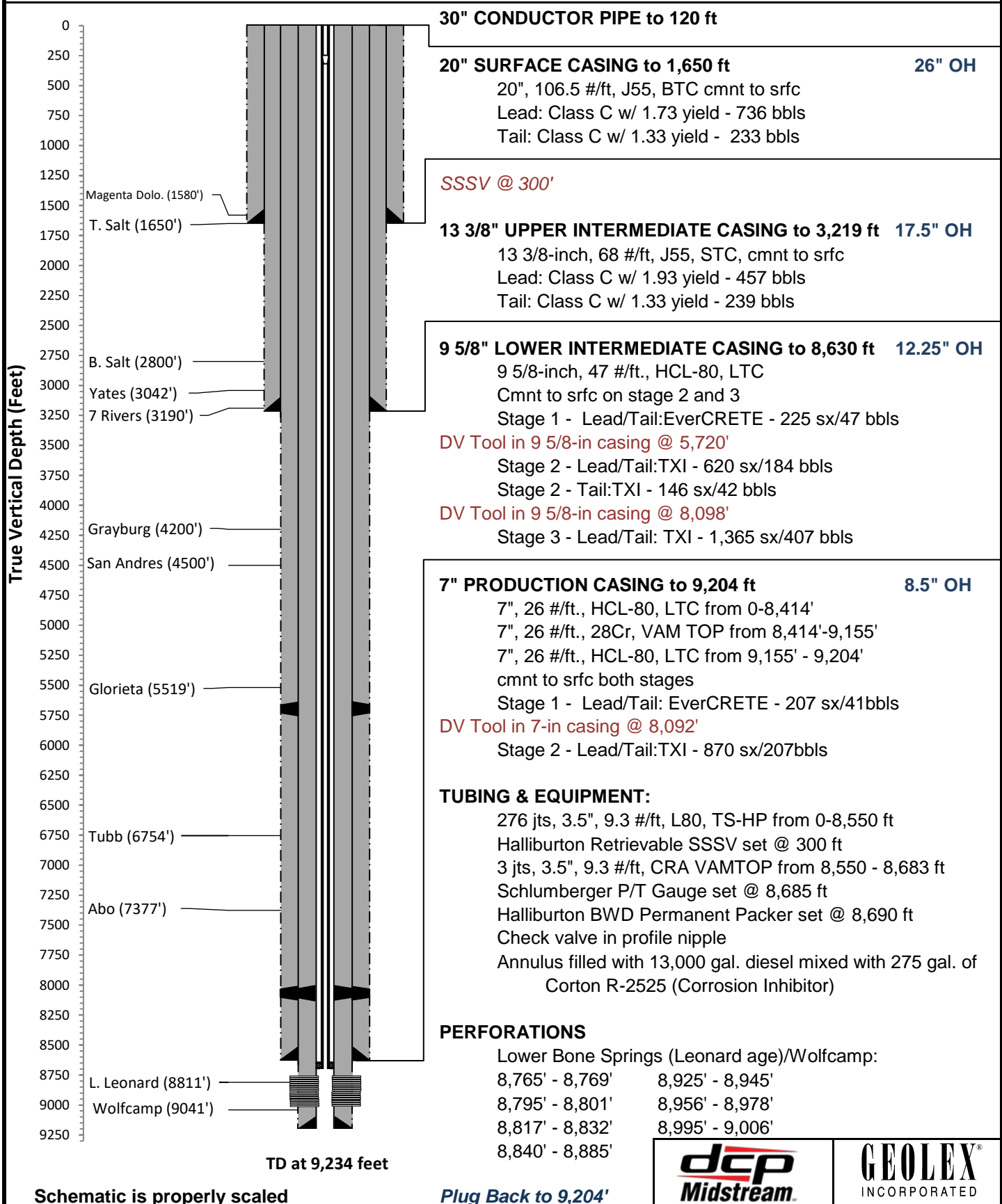
PERFORATIONS:	
Primary Target	Secondary Target
Lower Bone Springs	Brushy Canyon
8710' - 8730'	5000' to 5300'
8755' - 8765'	(Not perforated)
8780' - 8795'	
8780' - 8890'	
8925' - 8930'	
8945' - 8975'	
8985' - 9000'	
9045' - 9085'	



DCP Linam AGI #2 As-Built Well Schematic

Well Name: Linam AGI #2
API: 30-025-42139
STR: Sec. 30, T18S-R37E
County, St.: Lea County, New Mexico

Footage: 2120 FSL & 2120 FWL
Well Type: AGI - Wolfcamp
KB/GL: 3763'/3738
Lat, Long: 32.715837, -103.293543



Sante Fe Main Office
Phone: (505) 476-3441

General Information
Phone: (505) 629-6116

Online Phone Directory
<https://www.emnrd.nm.gov/ocd/contact-us>

State of New Mexico
Energy, Minerals and Natural Resources
Oil Conservation Division
1220 S. St Francis Dr.
Santa Fe, NM 87505

CONDITIONS

Action 461197

CONDITIONS

Operator: DCP OPERATING COMPANY, LP 2331 Citywest Blvd Houston, TX 77042	OGRID: 36785
	Action Number: 461197
	Action Type: [C-103] Sub. General Sundry (C-103Z)

CONDITIONS

Created By	Condition	Condition Date
mgebremichael	None	6/11/2025