

Santa Fe Main Office
Phone: (505) 476-3441
General Information
Phone: (505) 629-6116

State of New Mexico
Energy, Minerals and Natural Resources

Form C-103
Revised July 18, 2013

Online Phone Directory Visit:
<https://www.emnrd.nm.gov/ocd/contact-us/>

OIL CONSERVATION DIVISION
1220 South St. Francis Dr.
Santa Fe, NM 87505

SUNDRY NOTICES AND REPORTS ON WELLS (DO NOT USE THIS FORM FOR PROPOSALS TO DRILL OR TO DEEPEN OR PLUG BACK TO A DIFFERENT RESERVOIR. USE "APPLICATION FOR PERMIT" (FORM C-101) FOR SUCH PROPOSALS.) 1. Type of Well: Oil Well <input checked="" type="checkbox"/> Gas Well <input type="checkbox"/> Other <input type="checkbox"/>		WELL API NO. 30-015-05178
2. Name of Operator SPUR ENERGY PARTNERS LLC ON OCD'S BEHALF OF LLJ VENTURES, LLC DBA MARKER OIL & GAS		5. Indicate Type of Lease STATE <input checked="" type="checkbox"/> FEE <input type="checkbox"/>
3. Address of Operator 9655 KATY FREEWAY, SUITE 500, HOUSTON, TX 77024		6. State Oil & Gas Lease No.
4. Well Location Unit Letter B : 660 feet from the NORTH line and 1980 feet from the EAST line Section 16 Township 17S Range 31E NMPM EDDY County		7. Lease Name or Unit Agreement Name KERSEY STATE
11. Elevation (Show whether DR, RKB, RT, GR, etc.) 3835' GL		8. Well Number 1
		9. OGRID Number
		10. Pool name or Wildcat GRAYBURG JACKSON; SR-Q-G-SA

12. Check Appropriate Box to Indicate Nature of Notice, Report or Other Data

NOTICE OF INTENTION TO:		SUBSEQUENT REPORT OF:	
PERFORM REMEDIAL WORK <input type="checkbox"/>	PLUG AND ABANDON <input type="checkbox"/>	REMEDIAL WORK <input type="checkbox"/>	ALTERING CASING <input type="checkbox"/>
TEMPORARILY ABANDON <input type="checkbox"/>	CHANGE PLANS <input type="checkbox"/>	COMMENCE DRILLING OPNS. <input type="checkbox"/>	P AND A <input checked="" type="checkbox"/>
PULL OR ALTER CASING <input type="checkbox"/>	MULTIPLE COMPL <input type="checkbox"/>	CASING/CEMENT JOB <input type="checkbox"/>	
DOWNHOLE COMMINGLE <input type="checkbox"/>			
CLOSED-LOOP SYSTEM <input type="checkbox"/>			
OTHER: <input type="checkbox"/>		OTHER: <input type="checkbox"/>	

13. Describe proposed or completed operations. (Clearly state all pertinent details, and give pertinent dates, including estimated date of starting any proposed work). SEE RULE 19.15.7.14 NMAC. For Multiple Completions: Attach wellbore diagram of proposed completion or recompletion.

Please find post job report, as-plugged wellbore diagram and photograph of dryhole marker attached for your review.

Spud Date:

Rig Release Date:

I hereby certify that the information above is true and complete to the best of my knowledge and belief.

SIGNATURE Sarah Chapman TITLE REGULATORY DIRECTOR DATE 07/22/2025

Type or print name SARAH CHAPMAN E-mail address: SCHAPMAN@SPURENERGY.COM PHONE: 832-930-8613
For State Use Only

APPROVED BY: _____ TITLE _____ DATE _____
 Conditions of Approval (if any): _____

Kersey State 1 Daily P&A Ops Summary

Begin	End	Summary
4/16/2025	4/16/2025	Move All Equipment To Location, Spot Spur Matting Board, MIRU PU, Unhang Rods & HH, LD PR, Mechanic On Location To Work On Transmission, Crew Taking Lunch, Worked On Transmission For 3 Hours, Got It Going For Now, POOH LD 145 -3/4" Rods & Pump, Secure Well & SDFN
4/17/2025	4/17/2025	AOL & PJSM, H2S Equipment Is In Place & Functional, SICP @ 100#, TSIP @ 0#, Start Bleeding Down Csg. & Started Flowing Oil, Layed Kill Truck Hoses To Open Top Water Tank, And Flowed For 3 Hours Oil & Gas, Well Finally Died, Got Ready To Put BOP On, Office Called & Decision Made To RDMO PU, Insatalled Valve In Tbg., RDMO PU, Clean Location, Called BKU Yard To Move All Rods To Yard, Move All Equipment To Alto Amm #70H
5/5/2025	5/5/2025	<p>AOL HELD PJSM CHECK WELL PRESSURES 60 PSI ON TBG 250 ON CSG , BLEED TBG TO 0PSI , TBG DEAD, BLEED CSG TO 60PSI WELL BEGIN TO FLOW OIL OUT CSG, CALL FOR REVERSE PIT , PIT AOL RU CSG TO PIT FLOW BACK 36BBLS OF OIL CSG DEAD, MONITOR FOR 20MINS W/ NO FLOW ND WH NU BOP RU FLOOR F/ TBG CSG BEGIN TO FLOW , FLOW BACK 5 BBLS TO PIT CSG DIED PUMPED 2-BBLS TFW DWN CSG WELL STATIC</p> <p>TOOH TO DERRICK AS FOLLOWS</p> <p>115- JTS 2-3/8 EUE 1- 2-3/8" SN 1- 2 3/8" EUE PERF SUB 4' LG 1- 2 3/8" EUE MUD JT 1- 2 3/8" BULL PLUG</p> <p>OOH MI RU VAC TRUCK FLUSH AND CLEAN CELLAR PREP FOR WELDER , WHILE PREPPING CELLAR NOTICED BLINDS LEAKING RECLOSED 3 TIMES STILL LEAKING , CALL VENDOR TO BRING OUT NEW BOP , NEW BOP AOL ND BAD BOP NU NEW BOP CLOSE BLINDS MONITOR HAVE NO LEAKS AFTER 20 MINS WELL SECURED SDFN</p>

5/6/2025	5/6/2025	<p>AOL HELD PJSM BLEED DOWN WELL MI RU TWG WL MU 3.625" OD GR RIH TO 3500' LOG CSG COLLAR @ 3400' CSG APPEAR RATTY FROM 3412 DOWN , CALL OFFICE DISCUSSED SETTING CIBP @ 3390' INSTEAD OF 3404' DECISION MADE TO CALL OCD FOR APPROVAL, OCD DETERMINED A CEMENT RETAINER NEEDED TO BE SET AND PERFS SQUEEZED, THIS WILL BE DONE BY PLUGGING RIG, RDMO WL, RIH W/ RBP ON TBG SET @ 3390' TOO H TEST CSG , NOT HOLDING PUMPING IN @ 1BPM /400PSI, VALVE ON 7" OPEN NO RETURN UP 7" PU TENSION PACKER RIH TO 1724' TEST CSG PRESSURE UP TO 500 PSI BLEED DOWN TO 250 PSI IN 1MIN, TEST DOWN TBG BETWEEN 1724 TO 3390 PUMPING 1BPM /400PSI IMMEDIATE BLEED DOWN , CLEANUP CREW AOL TO CLEAN OIL FROM BOP STACK & WH PREPPING FOR WH REPAIR IN THE MORNING , SECURED WELL SDFN</p>
5/7/2025	5/7/2025	<p>AOL HAVE EDGE SAFETY ON LOC HELD SAFETY MEETING REGARDING HAZARDS ,AFTER SAFETY CHECKS OF CELLAR AREA , HIGH LEVELS OF LEL'S ARE PRESENT, ATTEMPTED TO BLEED OFF WITH NO SUCCESS, ATTEMPTED TO PUMP 14# CALCIUM CARBONATE DOWN 7" , PUMP 3.5BBLs PRESSURED UP TO 125PSI DISCUSSED OPTIONS WITH OFFICE DECISION TO NOT EXCEED 125PSI, CALLED OCD DISCUSSED OPTIONS CREW BREAK F/ LUNCH AFTER LUNCH DECISION MADE TO RELEASE WELDER AND THIRD PARTY SAFETY, RIH TEST RBP @ 3390' SET PACKER @ 3375' TEST TO 500PSI GOOD TEST , CALLED OFFICE DECISION MADE TO TOO H W/ PACKER TESTING ANNULUS OF 4-1/2" X 2-3/8" IN 500' INTERVALS AS FOLLOWS</p> <p>TEST AT RBP 3390-3375 500 PSI GOOD TEST TEST 3375'-0' FAILED TEST TEST 2875'-0' FAILED TEST TEST 2375'-0' FAILED TEST TEST 2375-3390' FAILED TEST(DWN TBG) TEST 1875'-0' FAILED TEST TEST 1375'-0' FAIED TEST TEST 875'- 0' GOOD TEST 500PSI TEST 1005'-0' GOOD TEST 500PSI TEST 1036'-0' FAILED TEST</p>

		<p>HOLE BETWEEN 1005' & 1036'</p> <p>ALSO HOLE BETWEEN 2375' & 3390'</p> <p>TOOH TO DERRICK WITH REMAINING TBG LD PACKER MU RETRIEVING HEAD RBIH W/ 105 JTS OF 2-3/8 TBG SECURE WELL SDFN</p>
5/8/2025	5/8/2025	<p>AOL HELD PJSM FINISH RIH TO RBP LATCH ON EASILY RELEASE RBP EASILY TOOH TO DERRICK LD RBP MI RU TWG WL MU CEMENT RETAINER RIH SET @ 3403' PU 25' RIH TAG CONFIRM RETAINER IN PLACE AND SET, POOH W/ WL SETTING EQUIPMENT, OOH MU CBL RIH TO 3403' TAG RETAINER LOG FROM 3403' TO SURFACE , OOH W/ WL LD TOOLS RD MO WL CREW BREAK F/ LUNCH , AFTER LUNCH RIH W/ STINGER FOR RETAINER AND 106JTS OF 2-3/8" EUE TBG , @ 3381' SW 13K RD FLOOR AND TBG EQUIPMENT , ND BOP NU WH LAND TBG IN LARKING HEAD INSTAL VALVES WELL SECURED RD WSU</p>
5/12/2025	5/12/2025	AOL held JSA HSE topic suspended loads MIRU PU sopt eqiptment Secure well SDFN travel
5/13/2025	5/13/2025	AOL & PJSM, Waiting On Procedure From OCD, Alfredo Talked To Them This Morning, But Now Can't Get Ahold Of Them, Decision Made To SDFN And Get A Game Plan For Tomorrow
5/14/2025	5/14/2025	<p>AOL & PJSM, Waiting On OCD Rep, Rep AOL, Decision Made To Spot Cement On Top Of Retainer, NDWH, NUBOP, POOH W/ 2 3/8" Tbg., LD Retainer Stinger, RIH W/ 2 3/8" Tbg. Open Ended, Cement Pump AOL, MIRU, Circulate Hole Clean, Crew Took Lunch, Mix & Spot 25 Sks. Class C Cement, Flush W./ Salt Gel, Spot Cement From 3403 to 3035', POOH W/ 6 Stands 2 3/8" Tbg., LD 10 Jts. 2 3/8" Tbg. WOC. Secure Well & SDFN</p>
5/15/2025	5/15/2025	<p>AOL & PJSM, Prepare To RIH & Tag Cement, RIH Tag Cement W/ 93 Jts. @ 22965', POOH W/ Tbg., PU AD1 Packer, RIH W/ 78 Jts. 2 3/8" Tbg To 2170', Set Packer, Pressure Up On Tbg. To 500# Held For 15 Mins. No Loss, Test From 2170' To 2965 GT, POOH LD Packer, Called David W/ OCD & He Was Good W/ Test & To Procede With Procedure, RIH 85 Jts. 2 3/8" Tbg. Open Ended To 2715'. Pump 25 Sks. Class C Cement Balanced Spot, No WOC Tag On This Plug, POOH To 2170' Spot 32 Sks Class C Cement From 2140' to 1657', WOC Tag In The</p>

		Morning, POOH W/ Tbg., WL Set Up In The Morning, Secure Well & SDFN
5/16/2025	5/16/2025	AOL & PJSM, MIRU WL Truck, RIH W/ 3 1/8" Perf. Gun, Tag Cement @ 1705', Called OCD & Got Permission To Continue As Planned, Perf @ 1610' W/ 4 Holes, Got Blow On 7" Csg Good Sign It Will Circulate, POOH RDMO WL, Waiting On Cement Pump, Pump AOL, MIRU, Start Pumping On 4 1/2" Csg. Broke Circulation, Flowed Back 20 Bbls. Oil And Started Getting Mud Back, Circulation Going Slow 1/2 BPM @ 1000#, Finally Got To 1 1/2 BPM @ 800# W/ Clean Water At Surface, Started Pumping 135 Sks Of Class C Cement, 100 Sks In Started Getting Cement At Surface On 7" Csg, Called OCD Was Given Permission To Continue, Finished Cemt & Displaced To 685' W/ FW, Went To SI 7" And Clamp On 7" Went To Leaking Bad And Blowing Cement Out, Open Up Remove Clamp & Add Extra Rubber To It & Tighten W/ Impact, SI & Still Leaking Bad & Hole In Csg. Has Gotten Worse, Flowing 10# Brine Water Now, Hookup To 500Bbl Frac Tank & Ordered 3 Vacuum Trucks To Hal All Night, Secure Well & SDFN, Welder Setup For 7 AM In The Morning
5/17/2025	5/17/2025	AOL & PJSM, Welder AOL & We Made A Game Plan To Fix Leak, Dug Out Cellar & Found Another 7" Collar Going To Make Patch Collar To Collar Because 7" Csg Is In Bad Shape, Clean Up WH Weld Plate On Bottom Collar, Spit 13 3/8" Csg. Welld To Bottom Plate, Cut Plates For Top And Welld To Top Collar, Going To Wat 30 Mins. To Let Cool Down Before SI
5/20/2025	5/20/2025	AOL & PJSM, Prepare To RIH & Tag Cement, SICP On 7" @ 620#, SICP On 4 1/2" @ 0#, RIH W/ 2 3/8" Tbg. Tag Cement @ 125', Notified NMOCD, POOH LD 2 3/8" Tbg., RIH LD All 2 3/8" Tbg. From Derrick, NDBOP, RIH W/ 2 Jts. 2 3/8" Tbg., NUWH, Install Valve In Tbg. RDMO PU, Leave All Csg. Valves SI Due To Problems At Battery, Rig Moving To Hobgoblin PA
7/7/2025	7/7/2025	AOL,PJSM. Anchors are up-to-date. Spot Spur matting board. MIRPU and set H2S monitor in place. SITP 0 psi. 4 1/2" 11.6#SICP 0 psi. 7" 24# intermediate csg.SIICP 0 psi. 8 1/4" 34# surface csg. SISCP 0 psi. Rig crew running behind and will move rig to loc.when they arrive. RIG AOL,PJSM. MIRUPU & set H2S monitor in place. NDWH,NUBOP. TOH w/2jts. 2 3/8" j55 eue 8rd 4.7# tbg. Set rev. Pit & unit. Crew SDFL. Stand by f/X-over from

		<p>WRH. X-over AOL from WRH. Will now TIH w/ 3 7/8" skirted rock bit, XO, 6- 3 1/8" drill collars,XO,& 2jts 2 3/8" j55 tbg. Tagged cement @ 230'. RU power swivel and BIW stripper. BIW bolts won't make up to BOP. Bolt holes seem to be stripped out. New BOP will be on loc.in the morning. RD power swivel. Secure well and SDFN.</p>
7/8/2025	7/8/2025	<p>AOL,PJSM. H2S monitor is in place. SITP 0 psi. SICP 0 psi. SIICP 0 psi. Check bolts and threads on top of new bop.NDBOP. NU New BOP. RU power swivel and BIW stripper. Start drilling out cement @230'. (SO 2pts max per WO superintendent). Started drilling out cement @230' 8:00am. @ 340' 9:00am. 2BPM @ 150PSI. @ 411' 10:00am. 2BPM @ 150PSI. Continue drilling out 2pts SO @ 1300# torque. @522' 11:00am. 2BPM @ 150PSI. @543' 12:00pm. 2BPM @ 150PSI. Pull up 10' continue circulating tfw 2 bpm while Crew SDFL. WRH Swivel Shut off. Starter is locked up. Standing by for starter. ETA for mech and new starter 1 1/2hrs. Mech.and new starter, on loc. swivel is repaired. Continue drilling out cement. 2pts SO,1300# torque,2 bpm 150psi. Starting @543' 3:00 pm. Continue drilling out cement. 2pts SO,1300# torque,2 bpm 150psi. @569' 4:00pm @585 5:00pm Pull bit uphole 15' rev circ. 6bbbs tfw. Will now secure well and SDFN.</p>
7/9/2025	7/9/2025	<p>AOL,PJSM. H2S monitor is in place. SITP 0 psi. SICP 0 psi. SIICP 0 psi. Continue drilling out cement. 2pts SO,1300# torque,2 bpm 150psi. Started @585' ,7:00am. 8:00am - bit @ 600' 8:36am - bit @ 729' Fell thru cement @729' and now have a back flow of 1/2bpm +/- . Continue TIH w/for next tag while rotating ea.jt. TIH w/for next tag while rotating ea.jt.to tag @1735' 49jts in -15'. (NOTE;Possible HIC between 670'-729',Sqz holes open @ 1610') Will now TOH w/</p>

		<p>49jts. 2 3/8" j55 tbg. XO 6- 3 1/8" DC's. XO 3 7/8" skirted rock bit.</p> <p>Bit- looks ok. One tooth wore down cones are a little loose. WL will be on loc. to run CBL in the morning & will have overnight shut in pressures on surface, intermediate and production casing. INITIAL SI PRESSURES@ 12:30pm SICP 425psi. SIICP 425psi. SISCP 0psi. Will now Secure well, crew lunch and SDFN.</p>
7/10/2025	7/10/2025	<p>AOL,PJSM. H2S monitor is in place. 6:54am SI pressure readings; SICP 600 psi. SIICP 600 psi. SISCP 0 psi. RU TWG wireline. Ran CBL from tag @ 1700' to surface. RDWL & Secure well. Send CBL results to Engineer & Stand by for instructions. OCD Decision made and will now order equipment. Crew lunch. RUWL and run punch. Punch 6- 9/16" sqz holes @ 1500'. Punched 9/16" sqz holes @ 1500'. Back flow still the same on 7" csg. Pull & RDWL. TIH w/ 47jts 2 3/8" j55 tbg. 2 3/8" bit sub 4 1/2" csg.scrapper. 3 7/8" bit @ 1500'. TOH w/ bit and scraper. TIH w/4 1/2" CICR, mech.setting tool,2 3/8" j55 tbg. Set 4 1/2" CICR @ 1468' 46jts in. Tested tbg to 2000psi. 5min. Good. Attempted to test 4 1/2" csg and pump 5bbls. Circulating out 7"csg. 4 1/2" csg has a hole. Established inj.Rate down tbg below 4 1/2"CICR. 1bpm @ 775psi. 5bbls pumped. 1.5bpm @850psi. 5bbls pumped. 1.7bpm @ 1000psi. 5bbls.pumped Sting out of CICR & TOH w/2 3/8" tbg.,4 1/2" CICR setting tool. Will run pkr to test CICR tomorrow morning. Secure well & SDFN.</p>

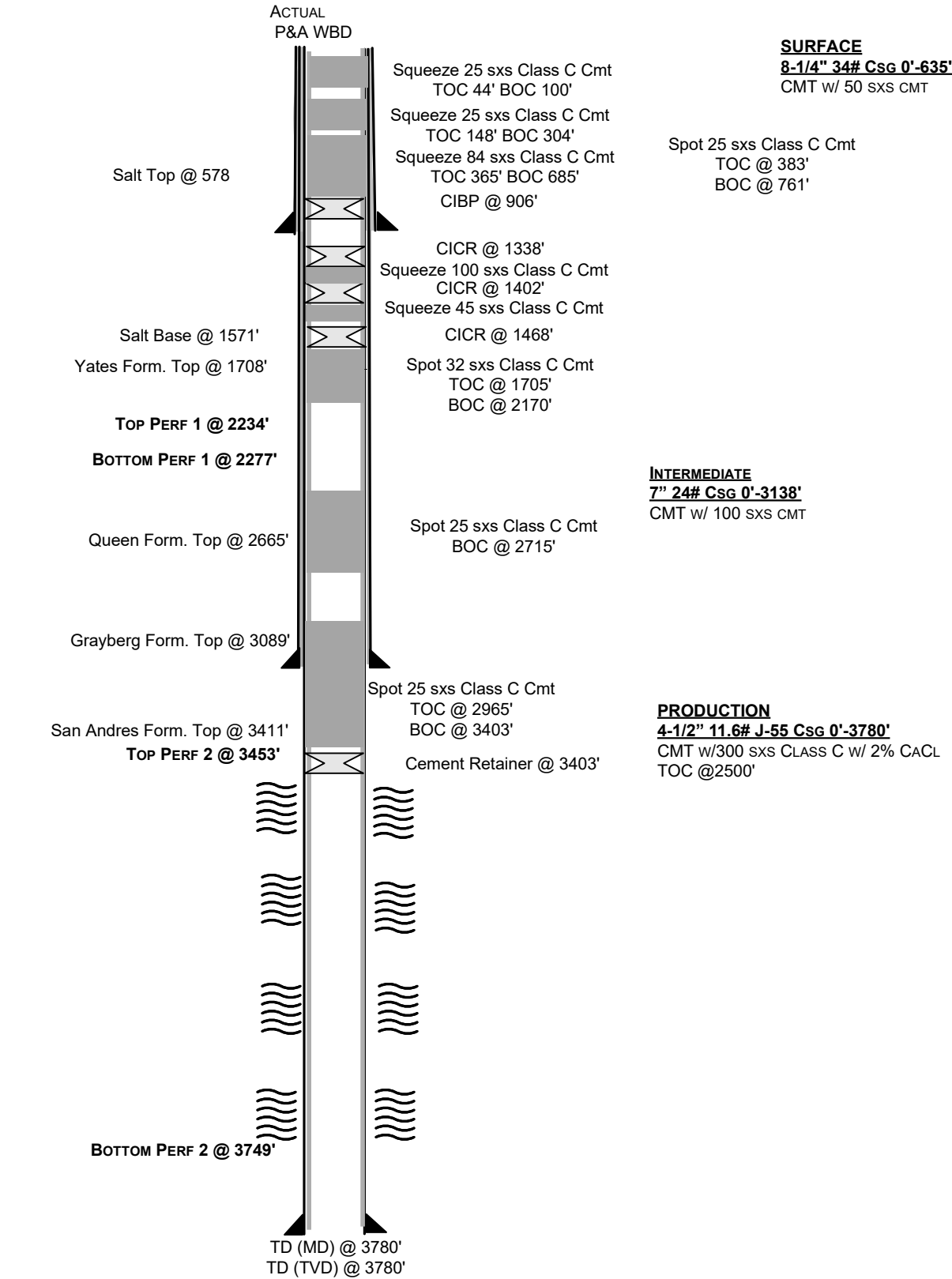
7/11/2025	7/11/2025	<p>AOL,PJSM. H2S monitor is in place.</p> <p>SICP 0 psi. SIICP 0 psi. SISCP 0 psi. TIH w/4 1/2" 32A tension pkr.,2 3/8" SN.& 45jts. Set 4 1/2" 32A tension pkr.,2 3/8" SN.& 45jts. Tested 4 1/2"CICR to 1000psi. 5 min.,good. TOH w/ pkr. TIH w/4 1/2" TS RBP,ret.head,&2 3/8" j55 tbg. Set @1434' 45jts in. TOH w/ 2 3/8" tbg.&ret.head. TIH w/ 4 1/2" 32A tension pkr.& 2 3/8" tbg. Start hunting HIC. Isolated HIC between 956' - 988'. Contacted engineer & standing by for instructions. TOH w/4 1/2" 32A pkr.& tbg. TIH w/4 1/2" TS RBP ret head & 2 3/8" tbg. Latch up and release TS RBP set @ 1434' 45jts in. Crew SDFL. TOH w/4 1/2" TS RBP,ret.head,&45jts. 2 3/8" j55 tbg. TIH w/ 4 1/2" CICR stinger and 46 jts 2 3/8" j55 tbg. Sting into 4 1/2" CICR & attempted to establish inj. Rate. CICR is plugged up. Discussed with OCD and Decision made to pull stinger. In the morning we'll punch 6- 9/16" holes 3' above current CICR @1468', run packer get injection rate. TOH W/CICR stinger & 2 3/8" tbg. Secure well & SDFN.</p>
7/12/2025	7/12/2025	<p>AOL,PJSM. H2S monitor is in place.</p> <p>SICP 0 psi. SIICP 0 psi. SISCP 0 psi. RUWL and run 9/16" 6 hole punch. Tagged CICR @ 1448' Punch 6- 9/16" holes @ 1444'. We have back flow .5 bpm. RDWL. Storm blew in derrick man refused to go up. Secure well & SDFW.</p>
7/14/2025	7/14/2025	<p>AOL,PJSM. H2S monitor is in place.</p> <p>SICP 600 psi. SIICP 700 psi. SISCP 0 psi. Bleed off pressure. TIH w/4 1/2" 32A pkr.& 44jts 2 3/8" j55 tbg. Set 4 1/2" 32A pkr @ 1406' 44jts in. Established inj.Rate down tbg below 4 1/2"32A.</p> <p>2bpm @ 1000psi. 5bbls pumped.</p> <p>TOH w/32A pkr & tbg. TIH w/4 1/2" CICR, mech.setting tool,2 3/8" j55tbg. Set 4 1/2" CICR @ 1402' 44jts in. Test tbg 2000psi. Good. Sting out and sting in. Establish inj.rate @ 1bpm 860 psi. Pump 45 sks class C neat cement. Flush w/5 bbls tfw, left .5 bbls cement in tbg. Sting out 2'& rev circ. 15bbls tfw. TOH w/MST stinger and 2 3/8" tbg. WOC 4 hrs then will run WL CBL. RU TWG wireline and run CBL from WL Tag @ 1394' to 700' Gamma gun started shutting off. Rehead and make another run. Finished trouble shooting gamma gun and run CBL again. Ran 2nd run w/ CBL from WL Tag @ 1394' to surface'. RDWL. Emailed results to Engineer,OCD,& Workover superintendent. Secure well and SDFN.</p>

7/15/2025	7/15/2025	<p>AOL,PJSM. H2S monitor is in place. SICP 0 psi. SIICP 0 psi. SISCP 0 psi. Stand by for OCD rep to finish meeting to make decision on next step. Decision made to Punch holes @ 1380' and run packer get injection rate. Standing by for wire line. WL AOL, standing by for csg punch to be delivered. RUWL & punched 6- 9/16" holes @1380'. RDWL. No backflow. TIH W/4 1/2" 32A pkr,& 42jts 2 3/8" j55 eye 8rd 4.7# tbg. Set pkr @ 1340' 42jts in. Attempted to Establish inj. Rate. Pressured to 1500psi.3 times, bled off 200psi every min. (Discussed with OCD and decision made to check casing pressures in the morning. Perf.through 4 1/2 and 7 inch casings @1380'.) TOH W/2 3/8" tbg.and 32A pkr. Secure well and SDFN.</p>
7/16/2025	7/16/2025	<p>AOL,PJSM. H2S monitor is in place. SICP 0 psi. SIICP 0 psi. SISCP 0 psi. RUWL & perf. 4 Sqz.holes thru 4 1/2"& 7" csg.W/ 3 1/8" perf gun. @1380'. Discussed next step w/OCD. TOH w/ 2 3/8" tbg.& 4 1/2" 32A pkr. TIH w/4 1/2" CICR,MST,& 2 3/8" j55 tbg. Set CICR @ 1338' 42jts in. Tested tbg 2000psi.,good. Sting out & sting in. ETA for Nine energy to AOL & pump cement 13:00 ,(100sks. Class C neat). RU cementers. 4 1/2" CICR set @ 1338" 42jts in. Establish inj.rate @ 1.7 bpm 1200 psi. Pumped 100 sks class C neat cement. Flushed w/ 4.7 bbls tfw, left .5 bbls cement in tbg. Sting out 2'& rev circ. 15bbls tfw. TOH w/MST stinger and 2 3/8" tbg. Discussed with OCD decision made to shoot perfs @638' thru 4 1/2" & 7" csgs. Then circ cement out both surface & intermediate csg. Flush 100' below wellhead. Wire line will be on loc. in the morning. LD drill collars,& 42jts 2 3/8" tbg. SECURE WELL AND SDFN.</p>
7/17/2025	7/17/2025	<p>AOL,PJSM. H2S monitor is in place. SICP 0 psi. SIICP 0 psi. SISCP 0 psi. RUWL & perf. Sqz holes @ 638' thru 4 1/2" csg.& 7" intermediate csg. w/3 1/8" gun. RU kill trk to 4 1/2" csg.pumped 7bbls got returns out 7" csg.shut 7" csg. No returns out 4 1/2" csg. RU kill trk to 8 1/4" surface valve and attempted to pump down surface valve started leaking out bull plug on surface head bull plug is cracked and cannot be removed. Opened 4 1/2" and 7" valves, they are on vacuum. (Discussed with OCD and engineer decision made to set 4 1/2" CIBP@906' 50' above HIC @ 956'- 988'). Stand by for 4</p>

		<p>1/2" CIBP and setting tool. RUWL & set 4 1/2" CIBP@906' 50' above HIC @ 956'- 988'. RU kill Trk to 4 1/2" csg. Pumped 13.5 bbls tfw, got circ.out 7" ,shut 7" valve. See if we get circ.out 8 1/4" surface csg. No circ. After pumping 25bbls tfw. RUWL to shoot 16 holes @ 685'. RU kill Trk to 4 1/2" csg. Pumped 7bbls tfw, got circ.out 7" ,shut 7" valve. Pumped 30 bbls.tfw. (Decision made to pump 84sks Class C neat cement down 4 1/2" 11.6# csg out 7" 24# intermediate csg. Displace 300' in 4 1/2" csg.) NDBOP,NU 3k x 4 1/2" LTC adaptor flange. RU Nine Energy cementers pump 105sks Class C neat cement down 4 1/2" 11.6# csg out 7" 24# intermediate csg. Displace (w/4.67bbls)300' in 4 1/2" csg. ISIP 50 psi. Wash up & RD cementers. WOC overnight. SDFN.</p>
7/18/2025	7/18/2025	<p>AOL,PJSM. H2S monitor is in place. SICP on vacuum. SIICP on vacuum . SISCP 0 psi. RUWL,to tag cement, & perf. Sqz holes thru 4 1/2" csg.& 7" intermediate csg. w/3 1/8" gun(16 holes). Tagged cement @356'. Perf @ 304'. RU pump Trk.to 4 1/2"csg.Pumped 15bbls 2bpm @ 300psi. No returns or blow from 8 1/4" 35# surface csg. valve. Shut pump off 50psi ISIP. Standing by. No returns out 7" intermediate csg.</p> <p>RU Nine Energy cementers pump 25sks Class C 2%Calcium chloride cement down 4 1/2" 11.6# csg out 8 1/4" 34# surface csg. Displace (1.5bbls)100' in 4 1/2" csg. ISIP 250 psi. WOC 4 hrs. SICP 100psi. Bleed off pressure. Will now RUWL,to tag cement, & perf. Sqz holes. Tagged cement @ 148'. Shoot sqz. perfs @ 100'(16 holes) . RU cementers to 4 1/2" csg. Pump 15 bbls.tfw. 2bpm @ 170 psi.no returns out surface. RU Nine Energy cementers pump 25sks Class C neat cement down 4 1/2" 11.6# csg out 8 1/4" 34# surface csg. Displace 25' in 4 1/2" csg. ISIP 300 psi. WOC. Will now secure well & SDFW.</p>
7/21/2025	7/21/2025	<p>AOL,PJSM. H2S monitor is in place. SICP -0 psi. SIICP -0 psi. SISCP 0 psi. TIH w/2jts 2 3/8" tbg. Tagged cement @ 44'. Stand by for welder. Finished cutting WH off and watched for bubbles for 30 min. No bubbles. weld on below ground dry hole marker. RT trkg.will bury dry hole marker and cellar tomorrow morning. RDPU & clean loc.up. Move rig and equipment to Aikman SWD St.#1.</p>

Eddy County, NM
API# 30-015-05178

SPUD DATE: 3/4/89
ELEV: 3,835' GL, XX' KB



Kersey State 1 Dryhole Marker



Sante Fe Main Office
Phone: (505) 476-3441

General Information
Phone: (505) 629-6116

Online Phone Directory
<https://www.emnrd.nm.gov/oed/contact-us>

State of New Mexico
Energy, Minerals and Natural Resources
Oil Conservation Division
1220 S. St Francis Dr.
Santa Fe, NM 87505

CONDITIONS

Action 488145

CONDITIONS

Operator: Spur Energy Partners LLC 9655 Katy Freeway Houston, TX 77024	OGRID: 328947
	Action Number: 488145
	Action Type: [C-103] Sub. Plugging (C-103P)

CONDITIONS

Created By	Condition	Condition Date
loren.diede	None	7/30/2025