

Submit a Copy To Appropriate District
Office
District I – (575) 393-6161
1625 N. French Dr., Hobbs, NM 88240
District II – (575) 748-1283
811 S. First St., Artesia, NM 88210
District III – (505) 334-6178
1000 Rio Brazos Rd., Aztec, NM 87410
District IV – (505) 476-3460
1220 S. St. Francis Dr., Santa Fe, NM
87505

State of New Mexico
Energy, Minerals and Natural Resources

Form C-103
Revised July 18, 2013

OIL CONSERVATION DIVISION
1220 South St. Francis Dr.
Santa Fe, NM 87505

WELL API NO. 30-039-22118
5. Indicate Type of Lease STATE <input type="checkbox"/> FEE <input type="checkbox"/>
6. State Oil & Gas Lease No.
7. Lease Name or Unit Agreement Name Canada Mesa (NMSF079086)
8. Well Number 1E
9. OGRID Number 14634
10. Pool name or Wildcat Devils Fork Gallup/DK
4. Well Location Unit Letter <u>C</u> : <u>1060</u> feet from the <u>North</u> line and <u>1840</u> feet from the <u>West</u> line Section <u>24</u> Township <u>24N</u> Range <u>6W</u> NMPM County <u>Rio Arriba</u>
11. Elevation (Show whether DR, RKB, RT, GR, etc.) 6483 GL

12. Check Appropriate Box to Indicate Nature of Notice, Report or Other Data

NOTICE OF INTENTION TO:	SUBSEQUENT REPORT OF:
PERFORM REMEDIAL WORK <input type="checkbox"/>	REMEDIAL WORK <input type="checkbox"/>
TEMPORARILY ABANDON <input type="checkbox"/>	ALTERING CASING <input type="checkbox"/>
PULL OR ALTER CASING <input type="checkbox"/>	COMMENCE DRILLING OPNS. <input type="checkbox"/>
DOWNHOLE COMMINGLE <input type="checkbox"/>	P AND A <input type="checkbox"/>
CLOSED-LOOP SYSTEM <input type="checkbox"/>	CASING/CEMENT JOB <input type="checkbox"/>
OTHER: <input type="checkbox"/>	OTHER: Run Liner <input checked="" type="checkbox"/>

13. Describe proposed or completed operations. (Clearly state all pertinent details, and give pertinent dates, including estimated date of starting any proposed work). SEE RULE 19.15.7.14 NMAC. For Multiple Completions: Attach wellbore diagram of proposed completion or recompletion.

Per the attached procedure, Merrion moved on to location and ran a 3-1/2" Liner to remedy the casing integrity.

Spud Date:

Rig Release Date:

I hereby certify that the information above is true and complete to the best of my knowledge and belief.

SIGNATURE Philana Thompson TITLE HSE & Regulatory Compliance DATE 3/16/2023

Type or print name Philana Thompson E-mail address: pthompson@merrion.bz PHONE: 505-486-1171

For State Use Only

APPROVED BY: _____ TITLE _____ DATE _____

Conditions of Approval (if any):

January 24th, 2023, Monica with NMOCD gave verbal (email) approval to proceed with running a liner per procedure.

January 26, 2023

Work Detail: MIRU. SICP=145psi, SITP=0psi upon arrival, blow down csg, trapped air. Spotted pump/pit and tubing float w/ 90jts of 2-3/8" tbg, loaded frac tank w/ fresh water. ND wellhead. Verify hanger free, NU BOP & function test. Tally out with 108jts of 2-3/8" tbg open ended, found 1jt pinched and btm jt threads cemented, LD both jts. Found outside of tubing wet after pulling 5 stands (fluid level approx. 350' from surface). Picked up a 3-7/8" blade bit, Bit sub, 6ea 3-1/8" DC's, X/O and RIH on 104jts of 2-3/8" tbg, tagged TOC at 3564'KB. LD 1 std from derrick. RU power swivel, prepare pump and pits to drill out cement plug. Installed TIW valve in tbg. Shut in well and SDON.

January 27, 2023

Work Detail: Loaded rig pit with water. Set to circulate dirty fluids into half round and transfer back to rig pit. Established circulation and pre-tested csg to 500 psi, slow bleed off (approx. 100 psi/min). Began drilling cement (3564'). Drilled down to 3625+/- quick then drilling at approx. 30 mins per joint. Drilled to 3819' KB. Too late to continue, circulate hole clean, PUH 5 stds, drain up pumps and lines and SDFW.

January 30, 2023

Work Detail: Function test BOP. TIH with 5 stands. Continued drilling cement where left off (3819'). Fell through cement at 3900'. Circulated bottoms up for 30 minutes. Continued TIH to tag top of sand fill on RBP. Tagged sand at 5259', circulated down to 5274' and circulated bottoms up. SD pump and POH with bit and drill collars. LD bit and MU 3-7/8" tapered mill and 3-7/8" watermelon mill on drill collars and TIH. End of tapered mill at 5274'. POH with 80 joints. End of mills at 2510'. Secured the well for the evening. Winterize equipment.

January 31, 2023

Work Detail: Function test BOP. Established circulation and continue poh with mills, stop every 10 stands to establish circulation for CBL run. LD mills and drill collars. RU wireline for CBL run. TIH with tools. WL tagged top of rbp at 5271'. Log showing **TOC at 220'**. Log on the way out, RD. MU RH, 1 joint and 2-3/8" SN on tbg and TIH. Tagged top and circulated with treated 2%KCL and Bioside down to wash over rbp. Released from RBP and circulated bottoms up. Latched onto RBP and swab casing fluid to pit. Got fluid swabbed down to 3400'. Released from RBP.

February 1, 2023

Work Detail: Function test BOP. Latched back onto RBP. Continue swabbing fluid back to pit. Swabbed down to 4400'. Released RBP had a slight blow on tbg. Pulled 2 joints and tbg started flowing. Shut in for pressure check (340 psi showing). Bled back to rig pit. Pumped 20 bbls treated KCl water to kill gas. POH with 48 stands pulled and well started flowing. Flowed fluid back to rig pit. Continue POH with RBP, got 27 stands pulled and started getting gas, water and oil mixed fluid back. Pumped 30 bbls KCl water down tbg and casing on vacuum. Continue POH with RBP. LD RBP and MU composite BP and hydraulic setting tool on tbg. TIH with 163 joints and 6 ft out on #163 (BP @5309'). Pumped 5 bbls down tbg and dropped setting ball, waited 10 minutes, pumped down tbg to set BP. Saw 600 psi and lost pressure on tbg from BP setting. Picked up off BP and set down on BP, set good. Break circulation with 75

bbbs, got all gas out, solid fluid back. SD. POH laying down 10 joints to winterize wellhead and tbgs. Secured well for the night.

February 2, 2023

Work Detail: SICP 0 psi. Started and warm up equipment. Function test BOP. Continue POH laying down 2-3/8" tbgs, got out with tbgs and tools. LD setting tool and sleeve. RU to run 3-1/2" FL-4S full liner. MU Float shoe on 2 joints of liner and float collar. TIH with liner (Tally and rabbit on the way in). Fill liner every 20 joints, got to 3108' KB (Shoe depth). RU to load and check floats. Pumped through floats at 350 psi, getting clean fluid back. SD liner on slight vacuum. POH with 2 joints to winterized wellhead and liner. Secured the well for the evening. Winterized equipment.

February 3, 2023

Work Detail: SICP 0 psi. Start and warming up equipment. Function test BOP. RU casing crew. Continue TIH with 3-1/2" liner, 178 joints in well. **End of float shoe at 5306.81'KB**, Load liner and check floats, pumped through floats at 350 psi, getting clean returns. SD and land Tbg (liner) Hanger in wellhead string wt. at 40K. RD casing crew. ND BOP. Attempted to lock in hanger, but could not get pins to turn, had to change out all four locks down pins. Locked in hanger and NU spacer spool without bushing. NU BOP, installed 3-1/2" 6' sub. Installed wiper plug in cement head and RU to tbgs sub, 1620 pressure test pumps and lines to 3000 psi. Start 10 bbbs water ahead. **Mix and pumped 109 sxs, 145 cu.ft., 25.8 bbbs of slurry**. SD and drop cement wiper from head, felt plug leave head. Displaced with 45.5 bbbs at 2 bpm, max pressure seen was 2650 psi. SD pressure at 1750. John Durham with OCD on location to witness. Shut in cement head and installed night cap. Secure well and winterized equipment.

February 6, 2023

Work Detail: Shut in on cement head is 600 psi. Bled pressure back to rig pit. RD cement head. NU spacer spool and bushing. Pressure test void to 1000 psi. RU to run 2-1/16" IJ Tbg. Spot Tbg trailer. Tally 2-1/16" IJ Tbg and rabbit tbgs on the way in the wellbore. MU 2.875 blade bit, bit sub, 1 joint and 2-1/16" Tbg and TIH to 3600'. POH standing back. RU wireline for CBL inside 3-1/2" liner. RU WL and TIH with CBL. Got **TOC @ 1000'** continue running in with tools to float collar at 5244'. Logging pulling out of wellbore. RD wireline and secured the well for the evening.

February 7, 2023

Work Detail: SICP 0 psi. Start and warm up equipment. Function test BOP. TIH with 2.875 blade bit, bit sub and 2-1/16" IJ Tbg. Tagged cement at 4750' with 146 joints in. RU power swivel on #147. Started drilling cement at Jt down in 12 minutes to 4783' returns grey in color, gritty in texture. Jt 148 down in 8 minutes. (4816') Returns same as before. Jt 149 down in 9 minutes. (4848') Returns grey in color, fine pieces of cement no rubber yet. Jt 150 down in 13 minutes (4880') returns grey in color fine cement pcs, no rubber. Jt 151 started drilling what felt like rubber, torquing up more than before. Drilled down to 4945' got rubber back. Drilled down to 5012' with 154 joints in. Circulated bottoms up for 30 minutes. Hang back swivel. POH with 5 stands. Secured the well for the evening.

February 8th, 2023 Notified Monica with NMOCD via email that we planned to perform a MIT on 2/9/2023, Kenneth with BLM advised they would not be able to witness

February 8, 2023

Work Detail: SICP 0 psi. Start and warm up equipment. Function test BOP. TIH with 5 stands and resume drilling cement inside 3.5" Liner. Drilled down to float collar at 5244'. Took 1 hour and 20 minutes to drill through float collar. Drilled out shoe joints to a depth of 5296'. Circulated bottoms up for 30 minutes. Pressure test to 600 psi for preliminary MIT. Held solid for 10 minutes. Bled pressure back to rig pit. POH with 5 stands to drain up tbg and wellhead. Secured the well for the evening. Winterized equipment.

February 9, 2023

Work Detail: SICP 0 psi. Start and warm up equipment. Function test BOP. TIH with 4 stands and break circulation for MIT. RU chart recorder for MIT. Pressure test liner to 640 psi for 30-minute test. 09:00-09:30 Held, John Durham with the OCD passed pressure test. Bled pressure back to rig pit. TIH to 5296' and resume drilling cement. Drilled for 2-1/2 hours and could not get deeper than 5302', tried working bit by spudding lightly a few times but still same results. Circulated bottoms up for 30 minutes. Hang back swivel and POH with tbg for bit check. Got out with bit. Inserts were broken and almost gone. Secured well for the night.

February 10, 2023

Work Detail: SICP 0 psi. Start and warm up equipment. Function test BOP. MU 2.75" od junk mill, 1-1/2" EU x 1-1/4" reg B x B bit sub and 2-1/16" IJ expendable check valve on 2-1/16" IJ tbg, EOT at 3000' unload wellbore with air unit. Unloaded again at 4325, 5280'. Swiveled up at 5280' and circulate down to 5302', Started milling with light wt. set on mill, could not make any progress, returns had 2 pc's of aluminum, 1 pc of copper spring and pc of carbide insert off blade bit. Circulated bottoms up. Hung back swivel and POH with mill. Got out with the mill, mill still looks good, some wear on outer edge. Secured the well for the weekend.

February 13, 2023

Work Detail: SICP=0psi. Start and warm up equipment. Function test BOP. Make up a 2.25" magnet on sand line jars & sinker bar, RIH and tagged bottom of liner shoe a few times, TOH with magnet, no recovery, magnet is clean. MU 2.875" OD tapered mill, 1-1/2" MT x 1-13/16" MFS X/O, 1-13/16" MFS x 1-1/2" EU, 1-1/2" EU x 2-1/16 IJ X/O and 2-1/16 IJ expendable check valve on 2-1/16 IJ Tbg. Tagged at 5243' KB (float collar area), tbg hung up. Picked up power swivel and worked tbg from 12K up to 25K while attempting to rotate, tbg freed up. Brought on air unit w/12 bbls/hr. mist & 1gal/10bbls soap/corrosion inhibitor and blew well around. Worked tapered mill through float collar area (~10 minutes to rotate back through). Started milling on float shoe, rotated, spud, made approx. 10" in 4 hrs. Recovering small pieces of metal shavings and pieces of rubber periodically. Decided to pull tapered mill to inspect. Ran soap sweep and dried up tbg. Hung back power swivel, TOH with 40 stds of 2-1/16" tbg. Shut in well and SDON.

February 14, 2023

Work Detail: SICP 0 psi. Start and warm up equipment. Function test BOP. Continued TOH with 2-7/8" tapered mill. Found large "washer" (most likely keeper washer to hold float in place) had been folded around tapered mill approx. 1/2 way up making cut-rite surface ineffective. MU 2.875" OD junk mill, 1-1/4" reg x 1-1/2" EU bit sub, 1-1/2" EU x 2-1/16" IJ X/O and 2-1/16" IJ expendable check valve on 2-1/16" IJ Tbg. TIH to 5280', picked

up power swivel and brought on air unit w/12 bbl/hr. mist, 1gal/10bbl soap & corrosion inhibitor. Began drilling on float shoe at 5302'KB, felt small void after approx. 1hr and began drilling 4-1/2" composite bridge plug at 5307' KB (total drill time 2 hrs). Surface air pressure climbed approx. 350 psi after drilling CBP, let well settle and clean up. Made 2 additional connections with swivel, no obstructions. LD swivel, RIH and tagged fill at 6545' KB (16' of rathole below btm perf). LD 4jts and TOH with 195 jts of 2-1/16" IJ tbg and junk mill. Shut in well and SDON.

February 15, 2023

Work Detail: SICP=790psi. Start and warm up equipment. Open csg to flowback and blow down slowly to ~10psi. Picked up a 2-1/16" notched collar, 2-1/16" expendable check (place knock out ball on top of check), 2-1/16" SN (1.5" ID), set bumper spring in SN. Ran 2-1/16", 3.25#, IJ tubing, Picked up a 2-1/16 IJ x 2-3/8" EUE 8rd X/O, installed 2-3/8" tubing hanger and **Landed 198jts of 2-1/16", 3.25#, IJ tubing at 6462.29'KB, SN landed at 6459.80'KB.** ND BOP, installed seal sub assembly and B-2 adapter with master valve on top of new completion spool. RU and pump 20bbls of water with Clay-Stay, Corrosion Inhibitor/Biocide. Tbg on hard vacuum, expendable check pumped off. RD MOL. Final Report.



Merrion Oil & Gas Corporation Wellbore Schematic

Canada Mesa #1E

Proposed Wellbore Configuration

Basin Dakota/ Devils Fork Gallup

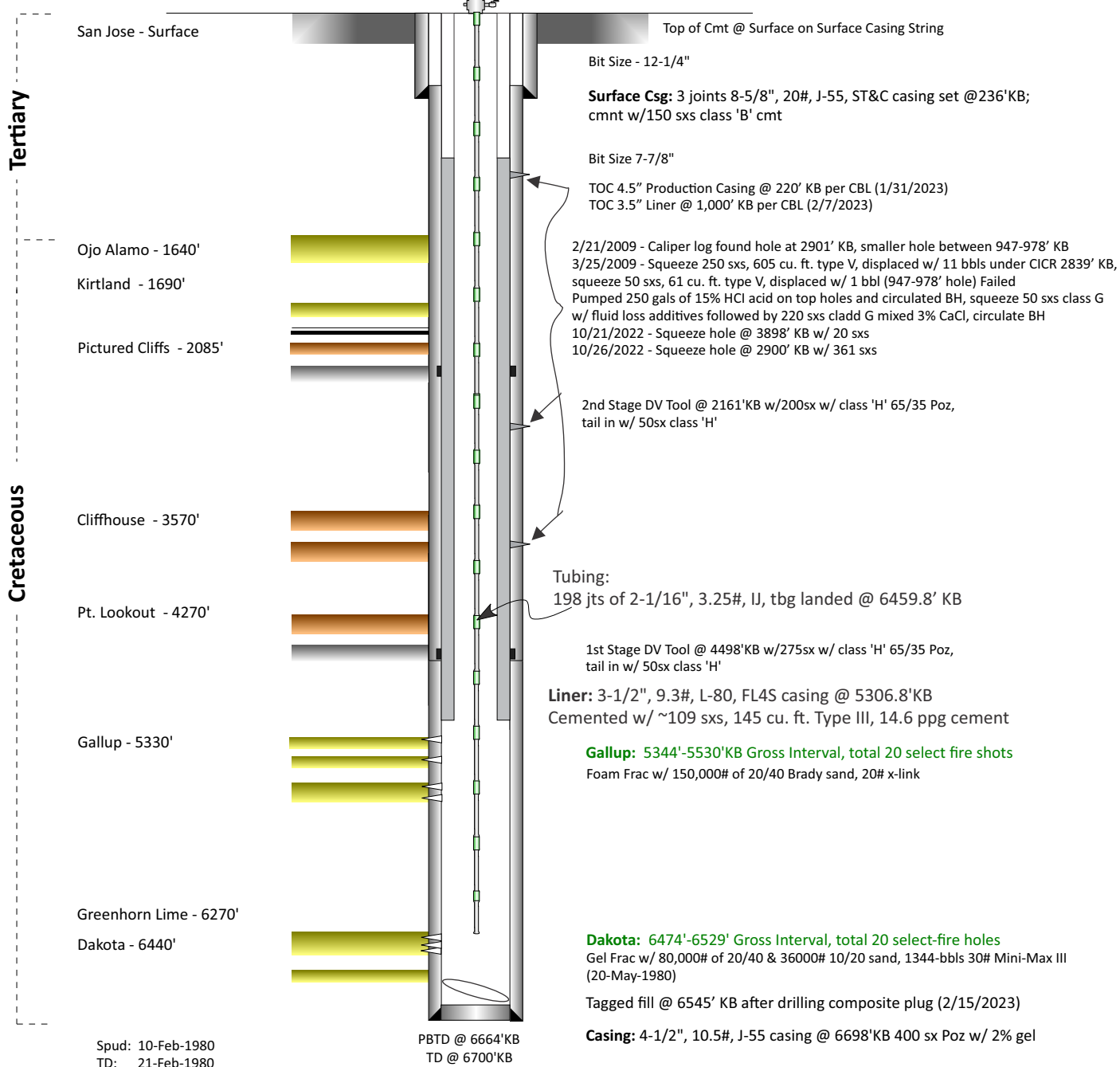
Location: 1060' fnl & 1840' fwl (ne nw)
Sec 24, T24N, R6W, NMPM
Rio Arriba Co, New Mexico

Elevation: 6,483' GL
6,493' RKB

API No: 30-039-22118

By: Steve Dunn

Date: 31-Jul-2008
Updated: 17-Feb-2023 (SCM)



Sante Fe Main Office
Phone: (505) 476-3441

General Information
Phone: (505) 629-6116

Online Phone Directory
<https://www.emnrd.nm.gov/oed/contact-us>

State of New Mexico
Energy, Minerals and Natural Resources
Oil Conservation Division
1220 S. St Francis Dr.
Santa Fe, NM 87505

CONDITIONS

Action 197960

CONDITIONS

Operator: MERRION OIL & GAS CORP 610 Reilly Avenue Farmington, NM 87401	OGRID: 14634
	Action Number: 197960
	Action Type: [C-103] Sub. Workover (C-103R)

CONDITIONS

Created By	Condition	Condition Date
andrew.fordyce	Accepted for record.	7/30/2025