

Office
 District I – (575) 393-6161
 1625 N. French Dr., Hobbs, NM 88240
 District II – (575) 748-1283
 811 S. First St., Artesia, NM 88210
 District III – (505) 334-6178
 1000 Rio Brazos Rd., Aztec, NM 87410
 District IV – (505) 476-3460
 1220 S. St. Francis Dr., Santa Fe, NM
 87505

State of New Mexico
 Energy, Minerals and Natural Resources

Form C-103
 Revised July 18, 2013

OIL CONSERVATION DIVISION
 1220 South St. Francis Dr.
 Santa Fe, NM 87505

WELL API NO. 30-045-25999
5. Indicate Type of Lease STATE <input type="checkbox"/> FEE <input type="checkbox"/>
6. State Oil & Gas Lease No.
7. Lease Name or Unit Agreement Name Sullivan A (NMSF-80384)
8. Well Number 2
9. OGRID Number 14634
10. Pool name or Wildcat Gallegos Gallup
11. Elevation (Show whether DR, RKB, RT, GR, etc.) 6071 GL

SUNDRY NOTICES AND REPORTS ON WELLS

(DO NOT USE THIS FORM FOR PROPOSALS TO DRILL OR TO DEEPEN OR PLUG BACK TO A DIFFERENT RESERVOIR. USE "APPLICATION FOR PERMIT" (FORM C-101) FOR SUCH PROPOSALS.)

1. Type of Well: Oil Well ☐ Gas Well ☒ Other

2. Name of Operator
Merrion Oil & Gas Corporation

3. Address of Operator
610 Reilly Ave, Farmington, NM 87401

4. Well Location

Unit Letter D : 790 feet from the North line and 790 feet from the West line
 Section 10 Township 26N Range 12W NMPM County San Juan

12. Check Appropriate Box to Indicate Nature of Notice, Report or Other Data

NOTICE OF INTENTION TO:

PERFORM REMEDIAL WORK ☐ PLUG AND ABANDON ☐
 TEMPORARILY ABANDON ☐ CHANGE PLANS ☐
 PULL OR ALTER CASING ☐ MULTIPLE COMPL ☐
 DOWNHOLE COMMINGLE ☐
 CLOSED-LOOP SYSTEM ☐
 OTHER: ☐

SUBSEQUENT REPORT OF:

REMEDIAL WORK ☐ ALTERING CASING ☐
 COMMENCE DRILLING OPNS. ☐ P AND A ☐
 CASING/CEMENT JOB ☐
 OTHER: Ran 3-1/2" Liner ☒

13. Describe proposed or completed operations. (Clearly state all pertinent details, and give pertinent dates, including estimated date of starting any proposed work). SEE RULE 19.15.7.14 NMAC. For Multiple Completions: Attach wellbore diagram of proposed completion or recompletion.

Per the attached procedure, Merrion moved on to location and ran a 3-1/2" Liner to remedy the casing integrity.

Spud Date:

Rig Release Date:

I hereby certify that the information above is true and complete to the best of my knowledge and belief.

SIGNATURE Philana Thompson TITLE HSE & Regulatory Compliance DATE 3/14/2023

Type or print name Philana Thompson E-mail address: pthompson@merrion.bz PHONE: 505-486-1171

For State Use Only

APPROVED BY: _____ TITLE _____ DATE _____

Conditions of Approval (if any):

SULLIVAN A No. 2**Well History****February 17, 2023**

Work Detail: Road rig from Canada Mesa #1E on 2/17/2023, ND wellhead. Verify hanger free, installed new 8-5/8" companion flange (permanent from WSI), NU BOP & function test. Changed out to 2-3/8" handling tools. Tally out with 157 jts of 2-3/8" tbg, SN w/ notched collar. Picked up a 3-7/8" tapered mill, 3-7/8" watermelon mill, bit sub and TIH on 105 jts of 2-3/8" tubing. EOT at 3310' KB. Stayed above bad spot in casing with mills until Monday. Shut in well & SDFW. Rig crew off loc at 1800 hrs.

February 20, 2023

Work Detail: Continued in hole with 3-7/8" tapered mill/watermelon mill in tandem. Tagged at 3350' KB, attempted to work through with tbg tongs, no success. LD 1jt, rig up pump and power swivel. Loaded csg w/~5bbls of water and began rotating through tight spot, approx. 10 minutes to work through. Ran 3-7/8" mills through area until csg cleaned up. Continue TIH to 4976'KB and tagged CIBP, no other obstructions. TOH w/3-7/8" mills. Picked up a 3-7/8" Twister bit, bit sub with float and TIH to 3300'KB. RU Cross Country air unit and unloaded csg to flowback tank (1400 psi surf psi). RIH to 4955'KB, picked up power swivel and unloaded fluids from well. Began drilling on CIBP (14:45hrs) at 4976'KB w/mist at 14 bph (1 gal/10 bbl soap/corrosion inhibitor), drilled on plug for 3 hrs 20 mins. Made approx. 18", spud several times and adjusted WOB F/1K – T/9K while drilling. Too dark to continue. Dried up air and SD. Pulled tbg high and SDON. Rig crew off location at 1900 hrs.

February 21, 2023

Work Detail: Brought on air unit, established circulation to flowback tank. Continued drilling CIBP at 4977'KB, completed drilling CIBP in 6 minutes. Cleaned up well & worked bit through area a few times, all clear. SD air, continued TIH, tagged fill at 5213'KB. Picked up swivel, brought on air and cleaned out to 5235'KB(1-1/2 hrs.), progressed became minimal (PBSD reported at 5242' KB). Ran soap sweep, dried up hole. RD power swivel, LD 70jts of 2-3/8" tubing on Double S trailer, stand back 48 stds & 1 single, break out bit sub & bit. RU TWG Wireline Service. Correlate with CBL ran on 9/15/2022. Set Composite BP at 4989'KB (top perf at 5028'). RD wireline. RIH on 96 jts of 2-3/8" tubing, EOT at 3020'. Loaded csg w/70 bbls of fresh water. LD 96 jts of 2-3/8" tubing on Hurricane float (97 jts on float total). SI in well & changed out to 3-1/2" handling tools. Rig crew off location at 1830 hrs. 70 jts of 2-3/8" tubing delivered to Cave Enterprise by Double S.

February 22, 2023

Work Detail: Hurricane trucking delivered 3-1/2", FL-4S, 9.3# nominal (8.81# plain end wt.) tubing. Spotted cement pit and 3-1/2" tubing. Gathered tools/parts for running 3-1/2" liner from Rig Equip, Select Oil Tools, WSI, Endurance Lift and Weatherford. 97 jts of 2-3/8" tubing delivered to Cave Enterprise by Hurricane Trucking (167 jts total of 2-3/8" tubing delivered to Cave).

SULLIVAN A No. 2**Well History****February 23, 2023**

Work Detail: RU SJC. Tally & drift 3-1/2" tubing as ran off the trailer. PU a 3-1/2" float Shoe, 2 jts (60.90') of 3-1/2", float collar (thread locked entire shoe track) and ran in hole on 23 jts of 3-1/2", could not get rig pump to start (mechanic had no luck either), RU small trash pump to load casing and verify circulation, floats are opening. Continued running in hole with 3-1/2", **ran 168 jts of 3-1/2" tbg & 1 pup jt (14.68') 9.3# (8.81# plain end), FL-4S liner (all tbg torqued to 1500 psi, verified w/Atlas Bradford spec sheet), PU extra jt and tagged wireline set CBP at 4980' (per crew tally).** LD tag jt. Picked up a 3-1/2", FL-4S x EU 8rd crossover and landing hanger, land liner in original wellhead with 3-1/2", EU x 6' tbg sub. **End of liner (shoe) at 4971.30' KB, Float collar at 4908' KB.** (Rig pump was replaced during TIH). RU pump and loaded csg with 37 bbls of fresh water, circulated an additional 10 bbls, rate = ~1.5bpm at 400 psi. Winterize pump/equip, use air line to blow fresh water from tbg sub. Shut in well and SDON. Rig crew off location at 1800 hrs. (R. McQuitty)

February 24, 2023

Work Detail: Started & warmed equipment. RU Drake Cementing Services. P/T lines to 4000 psi, circulated well around with 10 bbls of fresh water. **Mixed and pumped 52 sxs of (90/10) Type III/Poz lead cement (111 ft³, 19.8 bbl, 2.13 yld, 12.5 ppg, 12.03 gps) w/multiple adds, followed by 32 sxs of (90/10) Type III/Poz tail cement (42.5 ft³, 7.6 bbls, 1.33 yld, 14.6 ppg, 6.31gps).** Closed csg valve to hesitate circulation. Removed cement head cap and dropped Weatherford cement wiper plug (used a 4-1/2" DP top plug), opened csg valve and displaced plug w/ 43bbls of fresh water, final pump pressure was 2200 psi, bumped plug ~100 psi over. Checked floats, held. **Returned 4 bbls of good cement slurry to surface.** (John Durham Jr. with NMOCD on location and witnessed cement job). Monitored for flowback for a few minutes, all good. ND cement head & removed landing jt. ND BOP. Installed seal sub assembly in landing hanger (had to call for longer seal assembly) and NU re-completion spool, NU BOP on top. WSI tested void between hanger & seal assembly to 1200 psi, good. Rig crew changed out to 2-1/16" handling tools. Winterize pump/equip. Shut in well and SDFW. Rig crew off location at 1300 hrs. (R. McQuitty)

February 27, 2023

Work Detail: SICP 0 psi upon arrival. Motors cold & took a while to fire. Started & warmed equipment. Picked up a 2.75" junk mill, X/O & bit sub and RIH on 147 jts of 2-1/16", IJ 10rd tubing. Tagged TOC at 4768' KB (due to pumps/lines). Picked up power swivel. Est circulation and drilled cement F/4768' – T/4909'KB (7-10minutes per jt), encountered float collar, drilled on plug/float collar for 3 hrs. 10 minutes, made 18", recovered good amount of rubber debris initially then small pieces of hard metal shavings. Spud down a few times, did not change progress. Ran out of daylight, circulated hole clean. Hang back swivel and PUH 6 stds. Shut in well, winterize equipment and SDON. Rig crew off location at 1900 hrs. (R. McQuitty)

February 28, 2023

Work Detail: SICP 0 psi upon arrival. Started & warmed equipment. RIH 6 stds. Picked up power swivel. Est circulation and drill for ~2:00 hrs. Made ~3". No debris in returns. Limited progress. Stand back power swivel. POOH 151 jts of 2-1/16", IJ 10rd tubing, bit sub, XO, 2.75" junk mill. Junk mill had minimal scaring and wear. Wear pattern was largely on outside. Picked up a 2-7/8" blade bit,

SULLIVAN A No. 2**Well History**

bit sub, XO, and RIH on 151 jts of 2-1/16", IJ 10rd tubing. Bit sub would not make up to bit, had to get replacement bit sub from Select. Drilled on FC for 1.5 hrs. and broke through. Circulated aluminum shavings and rubber. Continued through to 4921' (13' past FC). Circulated hole clean. Hang back swivel and PUH 6 stds. Shut in well, winterize equipment and SDON. Rig crew off location at 1800 hrs. (R. McQuitty)

March 1, 2023

Work Detail: SICP 0 psi: SIBHP 0 psi upon arrival. Started & warmed equipment. RIH 6 stds. Picked up power swivel. Est circulation and drill for 3-1/2 hrs. Drilled 14' of cement (F/4921'-T/4935') but progress was very slow. Hang back swivel. Perform preliminary MIT to 640 psi on chart recorder, good test. TOH with 2-7/8" blade bit, found non-magnetic metal stuck between cutters but cutters not obstructed (easily removed with pliers), outer leading edge of bit had chipping on all blades. Picked up a new 2.75" junk mill, 3 ea. X/O's, bit sub, installed 2-1/16" string float and RIH on 151 jts of 2-1/16", IJ 10rd tubing. (Had to shut down for approx. 30 minutes on trip in & out due to high winds). Picked up power swivel on jt #152. Drilled 20' of cement F/4935' – T/4955' (1 hr - 20 minutes), spudding periodically to try to clear float collar debris with no luck. Circulated hole clean. Hang back swivel and PUH 6 stds. Shut in well, winterize equipment and SDON. Rig crew off location at 1900 hrs. (R. McQuitty)

Notified via email that we would be conducting a MIT on 3/1/2023 at 8:25AM, scheduled for 3/2/2023 at 8:30 AM.

March 2, 2023

Work Detail: SICP=0psi: SIBHP=0psi upon arrival. Started & warmed equipment. RU pump and established circulation. NMOCD had notified office saying they canceled field visit due to snow on roads. Performed 3-1/2" liner MIT on chart recorder (no OCD witness onsite), good test. Sent pic of chart to office, forwarded to NMOCD, Monica Kuehling approved test. PUH to 3260', RU Cross Country air unit and unloaded fluid from wellbore. TIH to 4955', picked up power swivel, attempted to unload fluid, bit plugged. LD 2jts and walk tbg up/down aggressively, brought on air unit, all clear. Unloaded fluids from wellbore. RIH to 4955'. Unloaded well & drilled F/4955' – T/ 4970'(float shoe) in approx. 1hr. Began drilling on shoe at 1300hrs with air/mist at 10bph, 1gal/10bbl soap & corrosion inhibitor. Drilled on shoe for 4-1/2hrs making minimal progress, approx. 4". Could not trip out for bit change due to high winds. Too late to continue. Dry up tbg, SD air unit, hang back swivel and pull up hole. Shut in well, winterize equipment and SDON. Rig crew off location at 1830hrs. (R. McQuitty)

Was notified via email on 3/2/2023 at 7:18AM that the NMOCD would not be able to witness because of weather conditions and school closures. They would not be able to witness but asked that we send a picture of the chart.

SULLIVAN A No. 2**Well History****March 3, 2023**

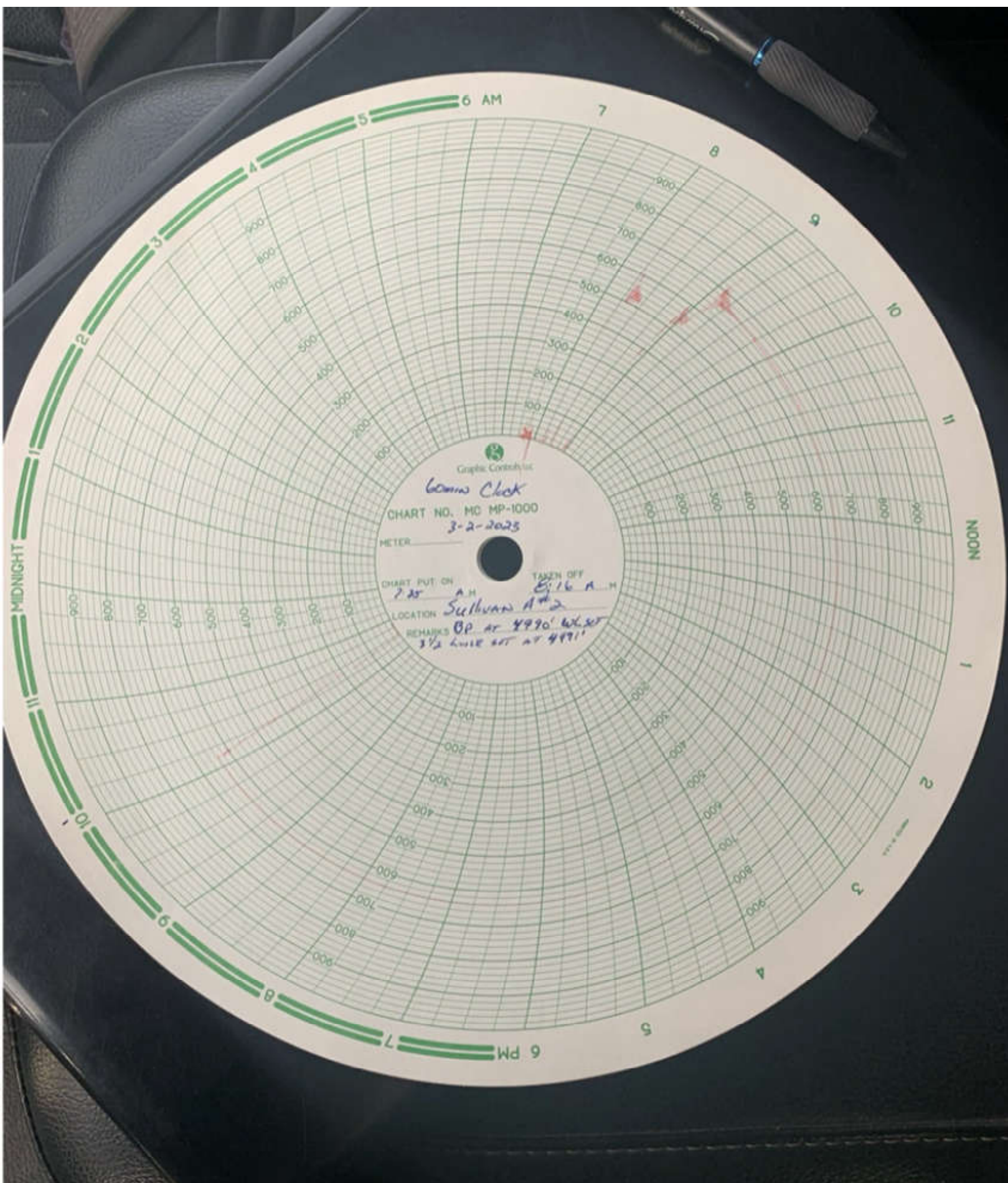
Work Detail: SICP=0psi: SIBHP=0psi upon arrival. RIH, picked up power swivel, brought on Cross Country air unit. Est circ w/air unit and began milling on shoe at 4970'KB. 45 minutes, no progress and could not get reactive torque. TOH w/ junk mill, mill looks good with minimal side wear approx. 1" from cutting surface(6hrs+ on junk mill). Picked up 2.75" tapered mill and RIH. Brought on air unit and began milling shoe with tapered mill. Drilled for approx. 1hr and made ~4" then progressed slowed to approx. 1"/hr. for 2hrs. Drilled with tapered mill for 6hrs and made approx. 6"-7". Too late to continue. Dry up tbg, SD air unit, hang back swivel and pull up hole. Shut in well, winterize equipment and SDON. Rig crew off location at 1800hrs. CNJ pulled flowback tank, cement wash up & rig pit.

March 6, 2023

Work Detail: SICP=0psi: SIBHP=0psi upon arrival. RIH, picked up power swivel, brought on Cross Country air unit. Est circ w/ air unit and began milling on shoe at 4970'KB, with tapered mill, 45 minutes, no progress. TOH w/ tapered mill, looks good, no wear until near full OD. Picked up 2.875" used 3 blade bit and RIH. Brought on air unit and began drilling shoe w/3 blade bit, showing good reactive torque immediately with minimal WOB. Drilled for approx. 1hr, made approx. 12" and torque began acting like cement. Drilled to 4984'KB and torque changed again (Wireline set CBP at 4990'KB, tagged with 3-1/2" tally at 4980'KB). Drilled CBP approx. 45minutes (2hrs total drill time). Blew well clean, TIH with 1jt on swivel, all clear. Rigged down swivel. Pushed plug to 5235'KB & tagged PBTD (Cleaned out to 5235' initially). LD 5jts and TOH with 78stds and 3 blade bits. Shut in well, winterize equipment and SDFW. Rig crew off location at 1600hrs.

March 7, 2023

Work Detail: SICP=200psi: SIBHP=0psi upon arrival. BDW to flowback. Started & warmed equipment. Picked up a notched collar, SN (1.474"ID), placed bumper spring in SN and RIH on 156jts of 2-1/16", IJ 10rd, 3.25#, J-55 tubing. Picked up a 1-1/2" EU x 2" EU crossover and installed 2-3/8" tubing hanger. Landed tbg in recompletion spool. ND BOP. Installed seal sub assembly on top of hanger and NU B-1 adapter with master valve. Installed 2.0625" lubricator. KCE Services on location to tie well into production. RD DWS #32 and prepare equipment to MOL tomorrow morning. Rig crew off location at 1100hrs. TWOTP. **FINAL REPORT.**



Merrion Oil & Gas Corporation Wellbore Schematic

Sullivan A No. 2

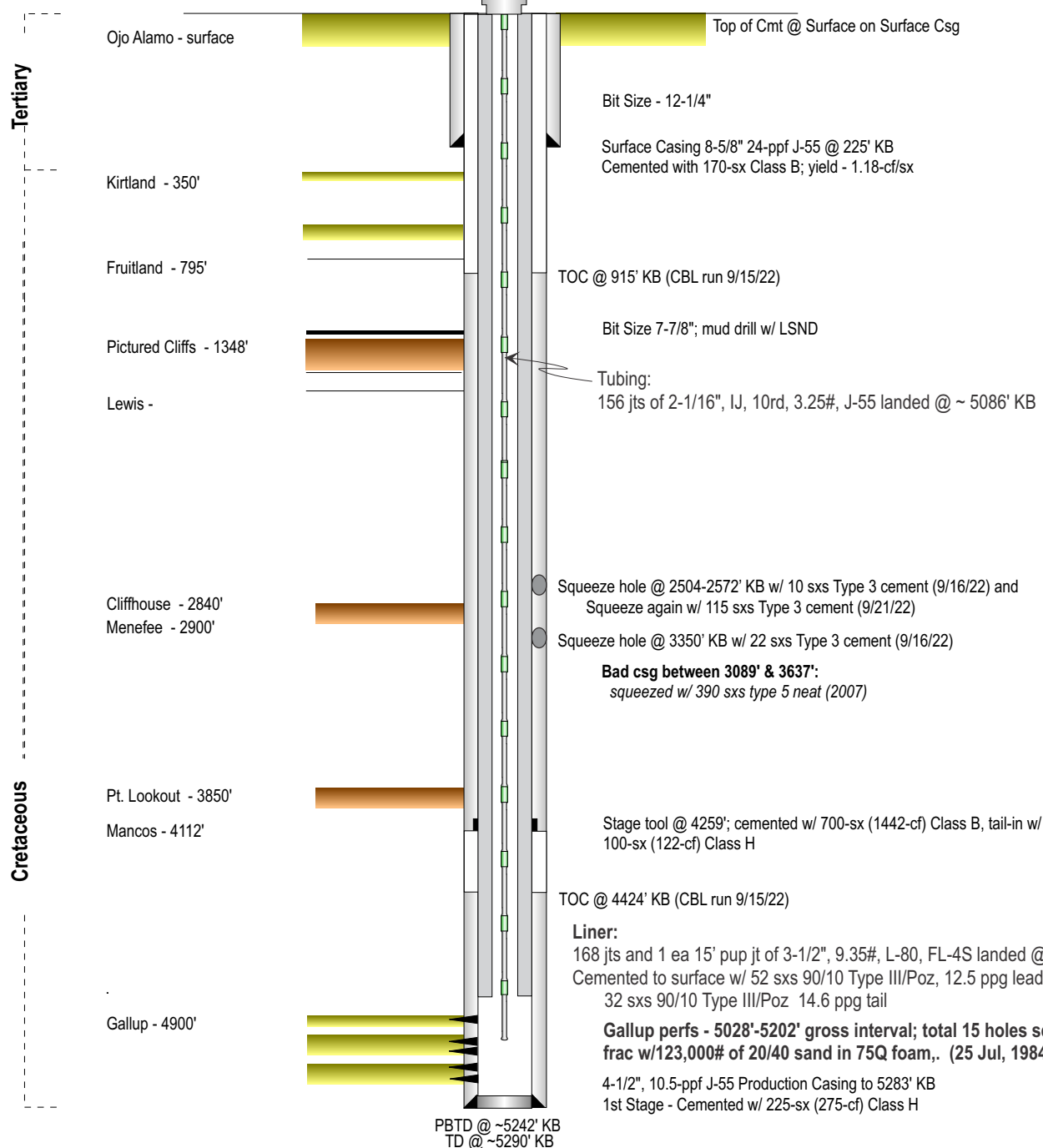
Proposed Wellbore Configuration

Location: 790' fnl & 790' fwl (nw nw)
Sec 10, T26N, R12W, NMPM
San Juan Co, New Mexico

Elevation: 6061' GL
6084' RKB

Modified: March 7, 2023 SCM

By: TSF



Sante Fe Main Office
Phone: (505) 476-3441

General Information
Phone: (505) 629-6116

Online Phone Directory
<https://www.emnrd.nm.gov/oed/contact-us>

State of New Mexico
Energy, Minerals and Natural Resources
Oil Conservation Division
1220 S. St Francis Dr.
Santa Fe, NM 87505

CONDITIONS

Action 198000

CONDITIONS

Operator: MERRION OIL & GAS CORP 610 Reilly Avenue Farmington, NM 87401	OGRID: 14634
	Action Number: 198000
	Action Type: [C-103] Sub. Workover (C-103R)

CONDITIONS

Created By	Condition	Condition Date
andrew.fordyce	Accepted for record.	7/30/2025