

|                               |         |           |           |           |         |           |          |       |  |              |  |          |  |
|-------------------------------|---------|-----------|-----------|-----------|---------|-----------|----------|-------|--|--------------|--|----------|--|
| HARVARD PETROLEUM COMPANY LLC |         |           |           |           |         |           |          |       |  | 30-015-2710E |  | JAN 2025 |  |
| TODD 27 P FEDERAL             |         |           |           |           |         |           |          |       |  |              |  | #016     |  |
| Surface Location              |         |           |           |           |         |           |          |       |  |              |  |          |  |
| Well Name                     | Section | Tract     | Range     | Well from | NS Line | Prod from | E/W Line | Class |  |              |  |          |  |
| P 27                          | 23S     | 31E       | 330       | S         | 330     | E         | EDDY     |       |  |              |  |          |  |
| Well Status                   |         |           |           |           |         |           |          |       |  |              |  |          |  |
| SAVED WELL                    | NO      | YES       | INSPECTOR | PRODUCES  | GAS     | DATE      |          |       |  |              |  |          |  |
| NO                            | YES     | INSPECTOR | PRODUCES  | GAS       | DATE    |           |          |       |  |              |  |          |  |

OBSERVED DATA

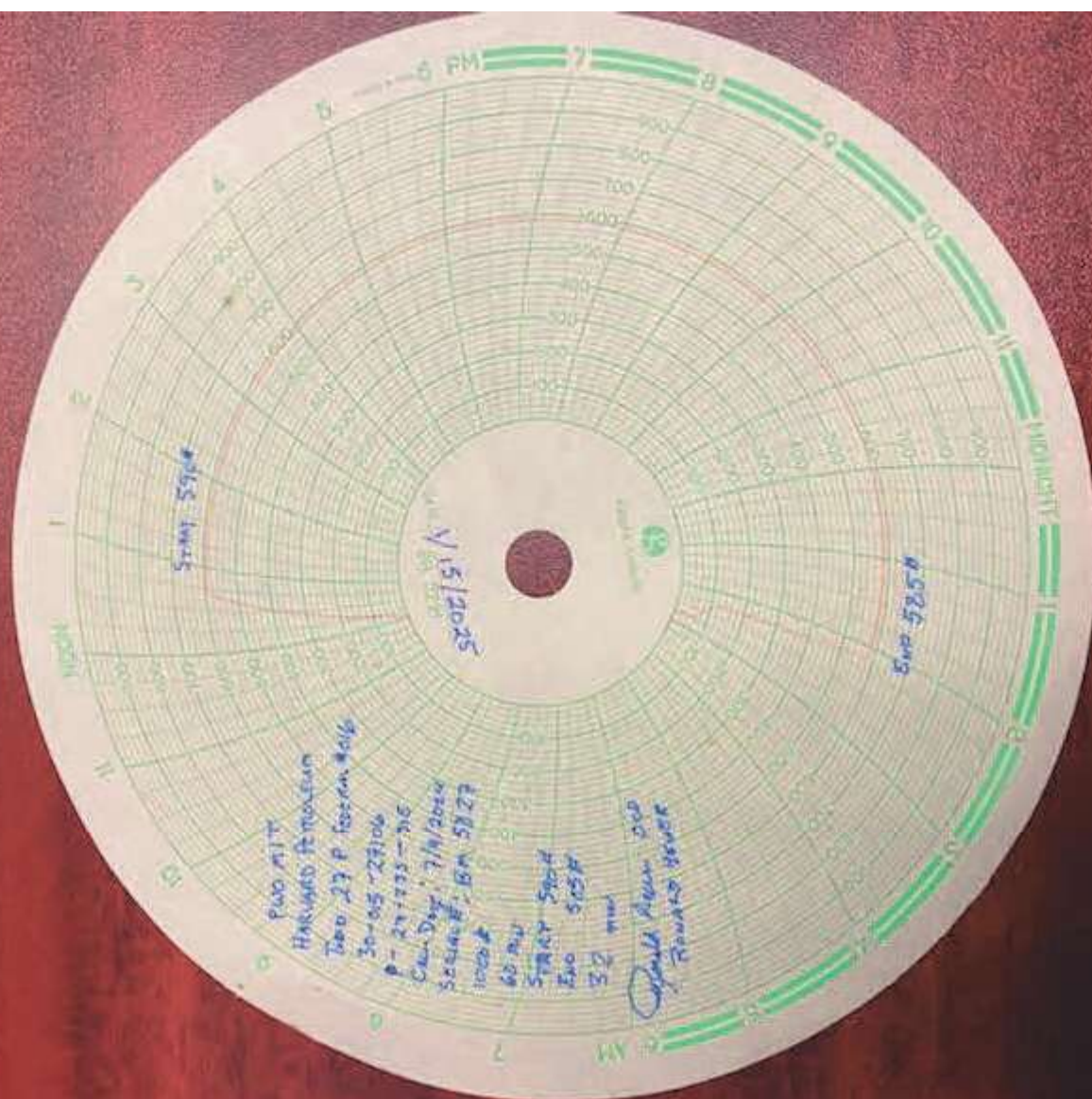
| Pressure     | Flow Rate | Flow Characteristic | Flow Direction | Flow Rate | Flow Direction | Flow Rate | Flow Direction |
|--------------|-----------|---------------------|----------------|-----------|----------------|-----------|----------------|
| Full         | 0         | 0                   | 0              | 0         | 0              | 0         | 0              |
| Steady Flow  | 0         | 0                   | 0              | 0         | 0              | 0         | 0              |
| Surge        | 0         | 0                   | 0              | 0         | 0              | 0         | 0              |
| Flow to tank | 0         | 0                   | 0              | 0         | 0              | 0         | 0              |
| Flow to 02   | 0         | 0                   | 0              | 0         | 0              | 0         | 0              |
| Water        | 0         | 0                   | 0              | 0         | 0              | 0         | 0              |

Page 10 of 10

Plus BHT ok

|                       |                   |                                  |
|-----------------------|-------------------|----------------------------------|
| <u>Date</u>           | <u>7/9/2024</u>   | <u>SERIAL # BM 582K</u>          |
| <u>Agency</u>         |                   | <u>OIL CONSERVATION DIVISION</u> |
| <u>Fossil Name</u>    |                   | <u>Entered into REEDMS</u>       |
| <u>Type</u>           |                   | <u>Re-lett</u>                   |
| <u>Fossil Address</u> |                   |                                  |
| <u>Date</u>           |                   |                                  |
| <u>Phone</u>          |                   |                                  |
| <u>Name</u>           | <u>Supervisor</u> |                                  |

INSTRUCTIONS ON BACK OF THIS FORM



Sante Fe Main Office  
Phone: (505) 476-3441

General Information  
Phone: (505) 629-6116

Online Phone Directory  
<https://www.emnrd.nm.gov/ocd/contact-us>

State of New Mexico  
Energy, Minerals and Natural Resources  
Oil Conservation Division  
1220 S. St Francis Dr.  
Santa Fe, NM 87505

CONDITIONS

Action 420950

CONDITIONS

|  |  |
|--|--|
| Operator:<br>HARVARD PETROLEUM COMPANY, LLC<br>P.O. Box 936<br>Roswell, NM 88202 | OGRID:<br>10155  |
|  | Action Number:<br>420950                                   |
|  | Action Type:<br>[UF-BHT] Bradenhead Test (BRADENHEAD TEST) |

CONDITIONS

| Created By   | Condition | Condition Date |
|--------------|-----------|----------------|
| ronald.heuer | None      | 8/1/2025       |