

Phone: (505) 476-3441

General Information

Phone: (505) 629-6116

State of New Mexico
Energy, Minerals and Natural ResourcesForm C-103
Revised July 18, 2013

Online Phone Directory Visit:

<https://www.emnrd.nm.gov/ocd/contact-us/>OIL CONSERVATION DIVISION
1220 South St. Francis Dr.
Santa Fe, NM 87505

SUNDRY NOTICES AND REPORTS ON WELLS (DO NOT USE THIS FORM FOR PROPOSALS TO DRILL OR TO DEEPEN OR PLUG BACK TO A DIFFERENT RESERVOIR. USE "APPLICATION FOR PERMIT" (FORM C-101) FOR SUCH PROPOSALS.)		WELL API NO. 30-025-38314
1. Type of Well: Oil Well <input checked="" type="checkbox"/> Gas Well <input type="checkbox"/> Other <input type="checkbox"/>		5. Indicate Type of Lease STATE <input checked="" type="checkbox"/> FEE <input type="checkbox"/>
2. Name of Operator Apache Corp		6. State Oil & Gas Lease No.
3. Address of Operator 303 Veterans Airpark Ln, Ste 1000 Midland Tx 79705		7. Lease Name or Unit Agreement Name North Monument G/SA Unit
4. Well Location Unit Letter <u>F</u> : 2630 _____ feet from the N _____ line and _____ 1370 _____ feet from the _____ W _____ line Section <u>18</u> Township <u>19S</u> Range <u>37E</u> NMPM County <u>LEA</u>		8. Well Number <u>356</u>
11. Elevation (Show whether DR, RKB, RT, GR, etc.)		9. OGRID Number <u>873</u>
10. Pool name or Wildcat Eunice Mon-Grybg -S.A.		

12. Check Appropriate Box to Indicate Nature of Notice, Report or Other Data

NOTICE OF INTENTION TO:

PERFORM REMEDIAL WORK ☐ PLUG AND ABANDON ☐
 TEMPORARILY ABANDON ☐ CHANGE PLANS ☐
 PULL OR ALTER CASING ☐ MULTIPLE COMPL ☐
 DOWNHOLE COMMINGLE ☐
 CLOSED-LOOP SYSTEM ☐
 OTHER: ☐

SUBSEQUENT REPORT OF:

REMEDIAL WORK ☐ ALTERING CASING ☐
 COMMENCE DRILLING OPNS. ☐ P AND A ☒
 CASING/CEMENT JOB ☐

OTHER: ☐

13. Describe proposed or completed operations. (Clearly state all pertinent details, and give pertinent dates, including estimated date of starting any proposed work). SEE RULE 19.15.7.14 NMAC. For Multiple Completions: Attach wellbore diagram of proposed completion or recompletion.

Notify NM Regulatory 24hrs prior

- 6/17- NU BOP TIH TO 3475' CIRC P&A MUD SPOT 25SX PUH TO 2960 SPOT 45SX POOH PERF AT 445 SISD
- PRESSURE UP ON PERF 550 PSI TIH TO 514' CIRC CEMENT TO SURF W/50SX ND BOP COWH VISUALLY VERIFY CEMENT AT SURF, CUT OFF MAST ANCHORS RDMD

D.H.M. TO BE INSTALLED

P&A MUD BETWEEN ALL PLUGS, CLOSED LOOP ALL FLUID TO LICENSED FACILITY

Spud Date:

Rig Release Date:

I hereby certify that the information above is true and complete to the best of my knowledge and belief.

SIGNATURE Brody Pinkerton TITLE Vice President DATE 6/20/25Type or print name Brody Pinkerton E-mail address: brody@maverickwellpluggers.com PHONE: 432-458-3780**For State Use Only**

APPROVED BY: _____ TITLE _____ DATE _____

Conditions of Approval (if any): _____

NMGSAU #356 – PLUGGING SUMMARY

6/17/2025 RU, Begin P&A

- MIRU, NU BOP
- RIH TO 3475', MIX & SPOT 25 SX CMT (CALC 250', 3215-3465'), DISPLACE W/14 BBLS MLF
- PUH TO 2960, MIX & SPOT 45 SX CMT (CALC 450', 2490-2940'), DISPLACE W/11 BBLS MLF
- RIH AND PERF CSG AT 445', GOOD INDICATION GUN FIRED

6/18/2025 Finish P&A

- ATTEMPT TO CIRCULATE, UNABLE TO CIRC, OCD (BOBBY T) INSTRUCTED TO DROP TO 500' AND FILL
- RIH TO 514', MIX & CIRC 50 SX CMT DOWN CASING, VISUALLY VERIFY CEMENT AT SURFACE
- CUT OFF WELLHEAD, TOPPED OFF PROD CASING AND LOADED SURFACE CASING W/CMT



Daily Reports

Well Name: NORTH MONUMENT G/SA UNIT #0356

API / UWI 3002538314	Surface Legal Location SEC 18-19S-37E, 2630' FNL & 1370' FWL	Field Name Eunice	License No.	State/Province NEW MEXICO	Well Configuration Type Vertical
Original KB/RT Elevation (ft) 3,710.00	RKB to GL (ft) 11.00	Original Spud Date 4/26/2007 18:15	Rig Release Date 5/3/2007 03:00	PBTD (All)	Total Depth All (TVD) Original Hole - 4,139.7

Expense Plug & Abandon, 6/17/2025 - 6/18/2025

Job Category Expense Plug & Abandon		Job Name NMGSAU #356 - P&A - SLO		Primary Job Type ABANDONMENT P&A		Actual Start Date 6/17/2025		End Date 6/18/2025		
Report Number 1		Report Start Date 6/17/2025		Report End Date 6/18/2025		Ops and Depth @ Morning Report			AFE Number 255-02451	
Last 24hr Summary Safety Meeting Heat awareness, Hydration, PPE, Breaks for cooling down MIRU WOR & support equipment. ND wellhead. NU BOP stack. RU Floor & Tbg tongs. RIH with 2-3/8" J55 WS to 3465' TM 108 jts Secured well for 4 hrs. MWP Truck driver got stuck on the SESR #433 location. Crew had to go assist him to get out. Resumed P&A Ops. Circulate Calcium gel mix 50 bbls. Plug #1 25 sxs Class C cement plug 3465' TM to 3215' TM 250' plug 14.8 ppg 5.5" Csg 17# 14 bbls displacement LD 16 jts EOT @ 2944' TM 92 jts Plug #2 45 sxs Class C cement plug 2940' TM to 2490' TM 450' plug 14.8 ppg 5.5" Csg 17# 11 bbls displacement LD Tbg. MU Spiral 6 shot 60 degree perforating gun. RIH to 445' WLM. Good indication gun fired. POOH to confirm Secured well & equipment										
24hr Forecast Attempt to circulate up the Surface CSG.										
Daily Job Total (Cost) 21,887.00						Cumulative (Cost) 21,887.00				
Start Time		End Time		Operation						
07:00		07:30		Safety Meeting Heat awareness, Hydration, PPE, Breaks for cooling down						
07:30		10:00		MIRU WOR & support equipment. ND wellhead. NU BOP stack. RU Floor & Tbg tongs.						
10:00		12:00		RIH with 2-3/8" J55 WS to 3465' TM 108 jts						
12:00		16:00		Secured well for 4 hrs. MWP Truck driver got stuck on the SESR #433 location. Crew had to go assist him to get out. Resumed P&A Ops.						
16:00		17:30		Circulate Calcium gel mix 50 bbls. Plug #1 25 sxs Class C cement plug 3465' TM to 3215' TM 250' plug 14.8 ppg 5.5" Csg 17# 14 bbls displacement LD 16 jts EOT @ 2944' TM 92 jts Plug #2 45 sxs Class C cement plug 2940' TM to 2490' TM 450' plug 14.8 ppg 5.5" Csg 17# 11 bbls displacement						
17:30		19:00		LD Tbg. MU Spiral 6 shot 60 degree perforating gun. RIH to 445' WLM. Good indication gun fired. POOH to confirm						
19:00		19:30		Secured well & equipment						
Report Number 2		Report Start Date 6/18/2025		Report End Date 6/19/2025		Ops and Depth @ Morning Report Attempted to Circulate up the Surface CSG			AFE Number 255-02451	
Last 24hr Summary Safety Meeting Team Work, Maintenance, Housekeeping Attempted to circulate up the Surface CSG. Pressures up to 550 psi. Contacted OCD (Bobby Trujillo) Instructions were to drop down to 500'. Fill 5-1/2" Production Csg with cement. Plug #3 50 sxs Class C cement plug 514' TM to Surface 514' plug 14.8 ppg 5.5" Csg 17# RD Tbg tongs & Floor. ND BOPs Cut wellhead off. Topped off Production Csg & Loaded Surface Csg with Cement with Poly line. RDMO WOR & support equipment.										
24hr Forecast Complete										
Daily Job Total (Cost) 12,300.00						Cumulative (Cost) 34,187.00				
Start Time		End Time		Operation						
07:00		07:30		Safety Meeting Team Work, Maintenance, Housekeeping						



Daily Reports

Well Name: NORTH MONUMENT G/SA UNIT #0356

API / UWI 3002538314	Surface Legal Location SEC 18-19S-37E, 2630' FNL & 1370' FWL	Field Name Eunice	License No.	State/Province NEW MEXICO	Well Configuration Type Vertical
Original KB/RT Elevation (ft) 3,710.00	RKB to GL (ft) 11.00	Original Spud Date 4/26/2007 18:15	Rig Release Date 5/3/2007 03:00	PBTD (All)	Total Depth All (TVD) Original Hole - 4,139.7

Start Time	End Time	Operation
07:30	10:30	Attempted to circulate up the Surface CSG. Pressures up to 550 psi. Contacted OCD (Bobby Trujillo) Instructions were to drop down to 500'. Fill 5-1/2" Production Csg with cement. Plug #3 50 sxs Class C cement plug 514' TM to Surface 514' plug 14.8 ppg 5.5" Csg 17#
10:30	12:00	RD Tbg tongs & Floor. ND BOPs Cut wellhead off. Topped off Production Csg & Loaded Surface Csg with Cement with Poly line. RDMO WOR & support equipment.

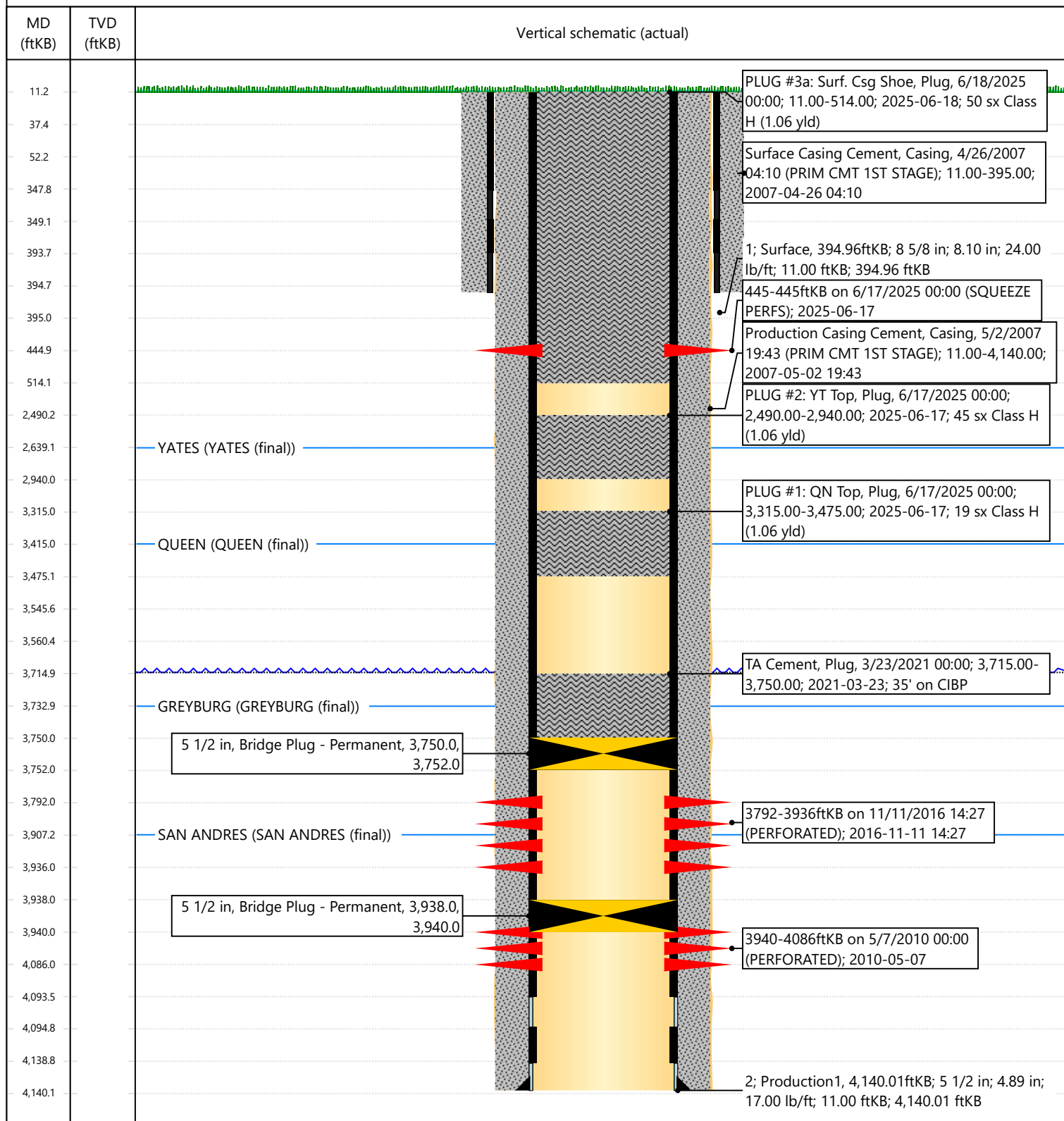


Current Schematic - Version 3

Well Name: NORTH MONUMENT G/SA UNIT #0356

API / UWI 3002538314	Surface Legal Location SEC 18-19S-37E, 2630' FNL & 1370' FWL	Field Name Eunice	Route	State/Province NEW MEXICO	Well Configuration Type Vertical
Ground Elevation (ft) 3,699.00	Original KB/RT Elevation (ft) 3,710.00	Tubing Hanger Elevation (ft)	RKB to GL (ft) 11.00	KB-Casing Flange Distance (ft)	KB-Tubing Hanger Distance (ft)
Tubing Strings					
Run Date	Set Depth (ftKB)	String Max Nominal OD (in)	String Min Nominal ID (in)	Weight/Length (lb/ft)	Original Spud Date

Original Hole, NORTH MONUMENT G/SA UNIT #0356 [Vertical]





Date	12-JUN-2025
------	-------------

Borehole Record	Tubing Record					
	From	To	Size	Weight	From	To

	Size	Wgt/lb	Top	Bottom
Living Record	8.625	24	SURFACE	395
Live String	5.5	17	SURFACE	4140
String				
Injection String				
Drill				

All interpretations are opinions based on inferences from electrical or other measurements and we cannot and do not guarantee the accuracy or correctness of any interpretation, and we shall not, except in the case of gross or willful negligence on our part, be liable or responsible for any loss, costs, damages, or expenses incurred or sustained by anyone resulting from any interpretation made by any of our officers, agents or employees. These interpretations are also subject to our general terms and conditions set out in our current Price Schedule.

CREW: R. GONZALEZ, C. POSADA
RIG: FESCO CRANE TRUCK

Released to Imaging: 8/1/2025 10:33:31 AM

Sante Fe Main Office
Phone: (505) 476-3441

General Information
Phone: (505) 629-6116

Online Phone Directory
<https://www.emnrd.nm.gov/ocd/contact-us>

State of New Mexico
Energy, Minerals and Natural Resources
Oil Conservation Division
1220 S. St Francis Dr.
Santa Fe, NM 87505

CONDITIONS

Action 479619

CONDITIONS

Operator: APACHE CORPORATION 303 Veterans Airpark Ln Midland, TX 79705	OGRID: 873
	Action Number: 479619
	Action Type: [C-103] Sub. Plugging (C-103P)

CONDITIONS

Created By	Condition	Condition Date
gcordero	Clean Location in accordance with 19.15.25.10 NMAC.	8/1/2025
gcordero	Submit C-103Q within one year of plugging.	8/1/2025