

Well Name: ROSA UNIT	Well Location: T31N / R5W / SEC 34 / NESE / 36.852936 / -107.344086	County or Parish/State: RIO ARRIBA / NM
Well Number: 55	Type of Well: CONVENTIONAL GAS WELL	Allottee or Tribe Name:
Lease Number: NMSF078773	Unit or CA Name:	Unit or CA Number:
US Well Number: 3003920923	Operator: LOGOS OPERATING LLC	

Notice of Intent

Sundry ID: 2866021

Type of Submission: Notice of Intent	Type of Action: Plug and Abandonment
Date Sundry Submitted: 07/30/2025	Time Sundry Submitted: 07:38
Date proposed operation will begin: 07/30/2025	

Procedure Description: LOGOS Operating, LLC requests permission to plug and abandoned the subject well. Attached: Updated procedure per previous COA from BLM (sundry id#2855552) and NMOCD (action id#471719) .

Surface Disturbance

Is any additional surface disturbance proposed?: No

NOI Attachments

Procedure Description

6.11_Rosa_Unit_55_Updated_PA_Procedure_per_COA_20250730073327.pdf

Received by OCD: 7/31/2025 10:39:08 AM

Page 2 of 11

Well Name: ROSA UNIT	Well Location: T31N / R5W / SEC 34 / NESE / 36.852936 / -107.344086	County or Parish/State: RIO ARRIBA / NM
Well Number: 55	Type of Well: CONVENTIONAL GAS WELL	Allottee or Tribe Name:
Lease Number: NMSF078773	Unit or CA Name:	Unit or CA Number:
US Well Number: 3003920923	Operator: LOGOS OPERATING LLC	

Conditions of Approval

Specialist Review

2866021_NOI_PnA_Rosa_Unit_55_3003920923_MHK_07.31.2025_20250731092324.pdf
Rosa_Unit_No_55_Geo_Rpt_20250604114729_20250731084828.pdf
General_Requirement_PxA_20250731084746.pdf

Operator

I certify that the foregoing is true and correct. Title 18 U.S.C. Section 1001 and Title 43 U.S.C. Section 1212, make it a crime for any person knowingly and willfully to make to any department or agency of the United States any false, fictitious or fraudulent statements or representations as to any matter within its jurisdiction. Electronic submission of Sundry Notices through this system satisfies regulations requiring a

Operator Electronic Signature: ETTA TRUJILLO
Signed on: JUL 30, 2025 07:39 AM
Name: LOGOS OPERATING LLC
Title: Regulatory Specialist
Street Address: 2010 AFTON PLACE
City: Farmington State: NM
Phone: (505) 324-4154
Email address: ETRUJILLO@LOGOSRESOURCESLLC.COM

Field

Representative Name:
Street Address:
City: State: Zip:
Phone:
Email address:

BLM Point of Contact

BLM POC Name: MATTHEW H KADE
BLM POC Title: Petroleum Engineer
BLM POC Phone: 5055647736
BLM POC Email Address: MKADE@BLM.GOV
Disposition: Approved
Disposition Date: 07/31/2025
Signature: Matthew Kade



Proposed Plug and Abandonment Procedure

Rosa Unit 55

API: 30-039-20923

Notes:

- LOGOS requests to P&A the subject well.
 - All cement will be Class G with a 1.15 cf/sk yield or equivalent.
 - String pressures will be monitored and recorded daily.
 - All proposed plugs include 50' excess inside casing and/or 100% excess in open hole.
 - BLM & NMOCD will be notified at least 24 hours prior to beginning work.
 - There is a cast iron cement retainer (CICR) set at 8010'.
 - A radial bond log was run on 6/13/2025 and shows cement tops behind the 4-1/2" casing at 6348' and 2745'.
1. Comply with all NMOCD, BLM, Forest Service, and LOGOS safety rules and regulations. Conduct safety meeting for all personnel on location.
 2. Move rig on location and RU. Lay flow lines. Check and record bradenhead and casing pressures.
 3. Roll hole with fresh water and pressure test the 4-1/2" casing to 560 psi for 15 minutes.
 - a. If pressure test fails, WOC and tag and record plug tops and top off with more cement if necessary.
 4. PU additional 2-3/8" tubing for use as work string and TIH.
 5. **Plug #1: 7825'- 8010' (Dakota Perforation top: 8060' / Dakota top: 8056' / CICR: ~8010' / Graneros top: 7925')**: Mix and spot 14 sx Class G cement.
 6. **Plug #2: 7096'-7266' (Gallup top: 7216')**: Mix and spot 14 sx Class G cement.
 7. **Plug #3: 5850'- 6011' (DV tool: 5961' / Mancos top: 5950')**: Mix and spot 13 sx Class G cement.
 8. **Plug #4: 5516'-5666' (Mesaverde top: 5616')**: Mix and spot 12 sx Class G cement.
 9. **Plug #5: 2775'-3490' (Pictured Cliffs top: 3440' / Fruitland top: 3311' / Kirtland top: 2875')**: Mix and spot 55 sx Class G cement.
 10. **Plug #6: 2585'-2735' (Ojo Alamo top: 2685')**: Perforate squeeze holes at ~2735' in the 4-1/2" casing and set CICR at ~2685'. Mix and spot 33 sx Class G cement. Squeeze 21 sx outside 4-1/2" casing and leave 12 sx inside. WOC and tag plug top. Top off with more cement as necessary.
 11. **Plug #7: 1168'-1318' (Nacimiento top: 1268')**: Perforate squeeze holes at 1318' in 4-1/2" casing and set CICR at ~1268'. Mix and pump 33 sx Class G cement. Squeeze 21 sx outside 4-1/2" casing and leave 12 sx inside. WOC and tag plug top. Top off with more cement as necessary.



12. **Plug #8: 0'- 356' (Surface Casing Shoe: 306')**: Perforate squeeze holes at 356' in 4-1/2" casing. Mix and pump 86 sx Glass G cement. Squeeze 55 sx outside 4-1/2" casing and leave 31 sx inside. WOC and tag plug top. Top off with more cement as necessary.
13. ND BOP and cut off wellhead below surface casing flange. Top off with more cement if needed. Install P&A marker with cement per regulations. Photograph P&A marker in place. Cut off anchors and restore location per BLM stipulations.

RU 55 P&A Planning

Formations	Tops (ft)
Surface	0
Csg Shoe	306
Nacimiento	1268
Ojo Alamo	2685
Kirtland	2875
Fruitland Coal	3311
Pictured Cliffs	3440
Mesaverde	5616
Mancos	5950
DV Tool	5961
Gallup	7216
Graneros	7925
CICR	8010
Dakota	8056

7-5/8" csg & 4-1/2" csg cap	0.1544 cf/ft
6-3/4" hole & 4-1/2" csg	0.1381 cf/ft
4-1/2" csg cap	0.0873 cf/ft
Yield	1.15

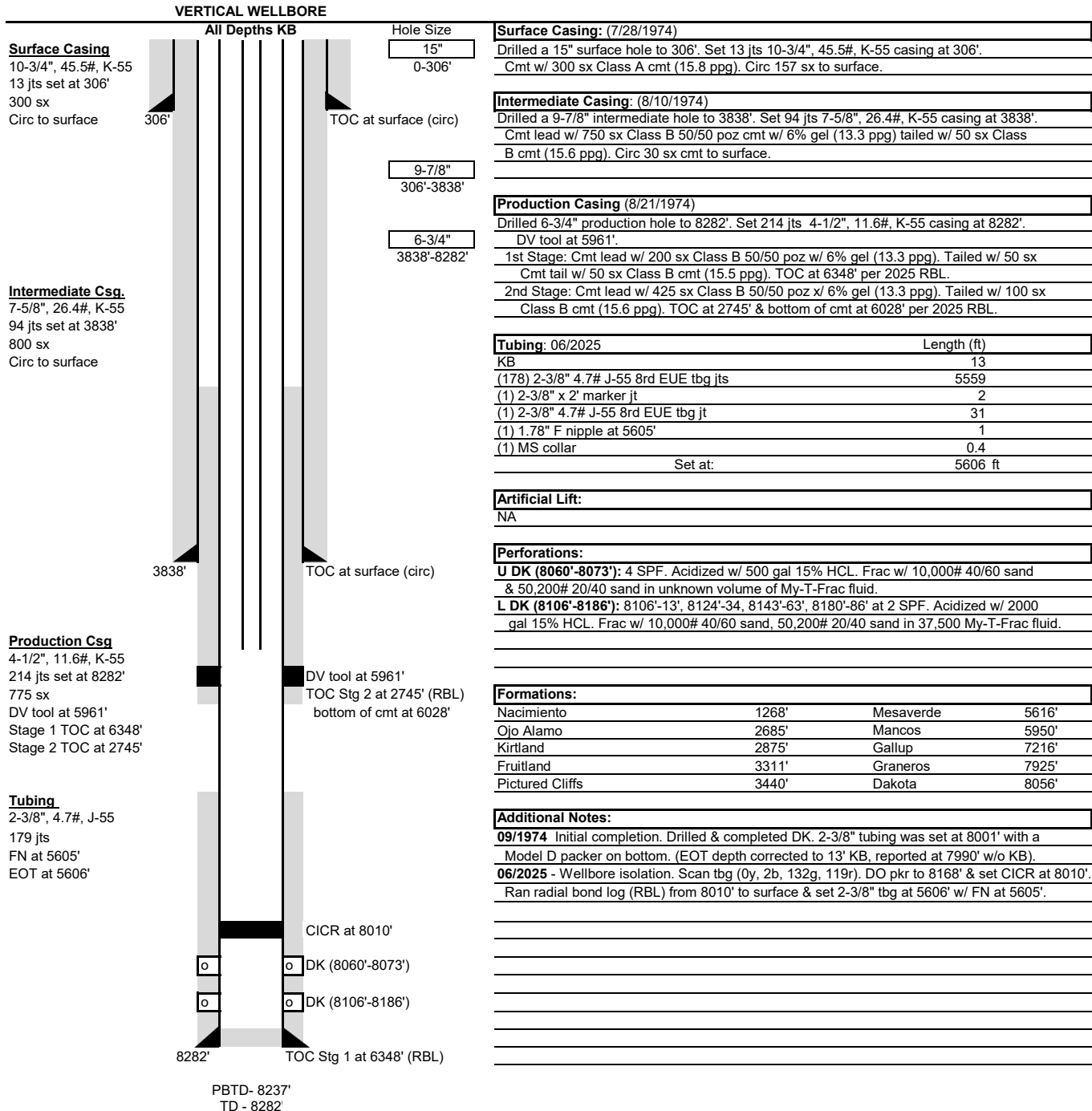
Plugs	Reason	Inside/Outside	Top	Bottom	Length of Plug (ft)	Top (incl 50' excess)	Inside Csg Volume (cf/ft)	Outside Csg Volume (cf/ft)	# of sx inside (1.15 yield & 50' excess)	# of sx outside (1.15 yield & 100% excess or 50' inside csg)	Total # sx
1	DK Perfs/CICR/GRA	Inside	7875	8010	135	7825	0.0873		14	0	14
2	Gallup	Inside	7166	7266	100	7096	0.0873		14	0	14
3	Mancos	Inside	5900	6011	111	5850	0.0873		13	0	13
4	Mesaverde	Inside	5566	5666	100	5516	0.0873		12	0	12
5	PC/Fru/Kirt	Inside	2825	3490	665	2775	0.0873		55	0	55
6	Ojo	Inside/Outside	2635	2735	100	2585	0.0873	0.1544	12	21	33
7	Nacimiento	Inside/Outside	1218	1318	100	1168	0.0873	0.1544	12	21	33
8	Surf	Inside/Outside	0	356	356	0	0.0873	0.1544	31	55	86
Grand total cmt											260



Wellbore Schematic

Well Name: Rosa Unit 55
 Location: UL I, Sec 34, T31N, R5W 1510' FSL & 1170' FEL
 County: Rio Arriba
 API #: 30-039-20923
 Co-ordinates: Lat: 36.8529892 Long: -107.3445587 NAD83
 Elevations: GROUND: 6576'
 KB: 6589'
 Depths (KB): PBDT: 8237'
 TD: 8282'

Date Prepared: 9/9/2019 Moss
 Last Updated: 7/23/2025 Sullivan
 Reviewed By: Jul 23, 2025 *Kathryn Moss*
 Spud Date: 7/28/1974
 Completion Date: 10/25/1974
 Last Workover Date: 6/9/2025

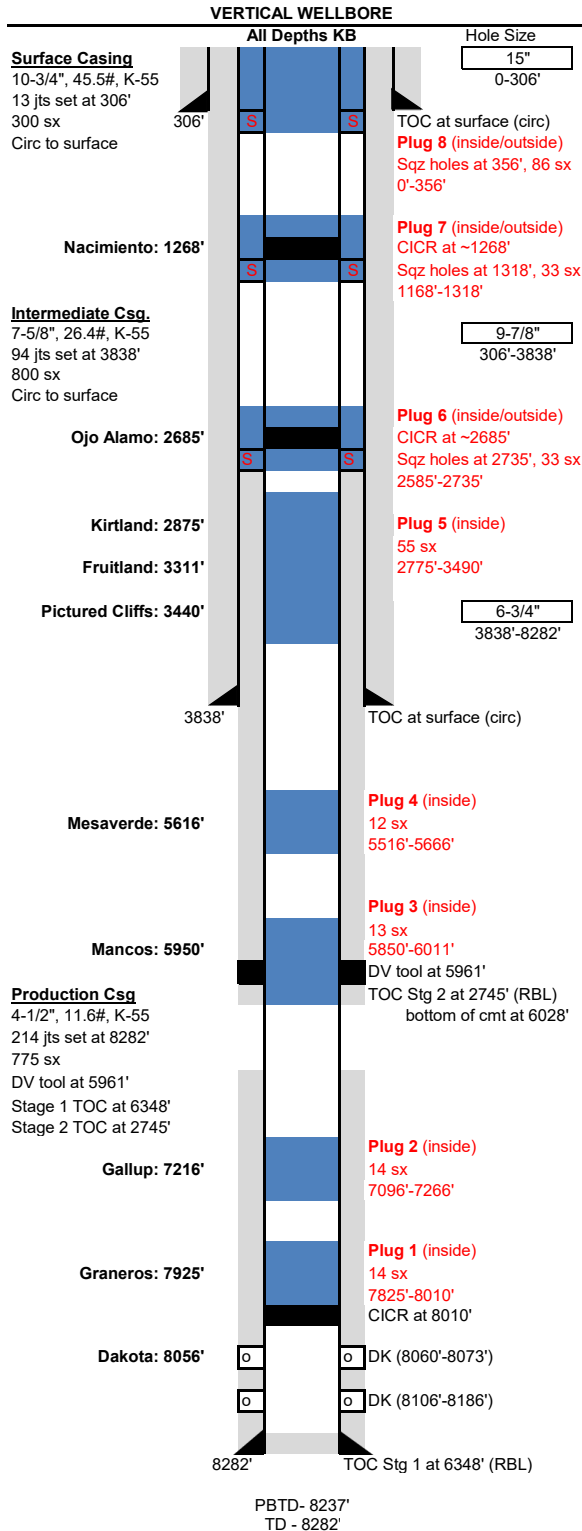




Proposed P&A Wellbore Schematic

Well Name: Rosa Unit 55
 Location: UL I, Sec 34, T31N, R5W 1510' FSL & 1170' FEL
 County: Rio Arriba
 API #: 30-039-20923
 Co-ordinates: Lat: 36.8529892 Long: -107.3445587 NAD83
 Elevations: GROUND: 6576'
 KB: 6589'
 Depths (KB): PBTD: 8237'
 TD: 8282'

Date Prepared: 9/9/2019 Moss
 Last Updated: 3/20/2025 Moss
 Reviewed By:
 Spud Date: 7/28/1974
 Completion Date: 10/25/1974
 Last Workover Date:



Surface Casing: (7/28/1974)
 Drilled a 15" surface hole to 306'. Set 13 jts 10-3/4", 45.5#, K-55 casing at 306'.
 Cmt w/ 300 sx Class A cmt (15.8 ppg). Circ 157 sx to surface.

Intermediate Casing: (8/10/1974)
 Drilled a 9-7/8" intermediate hole to 3838'. Set 94 jts 7-5/8", 26.4#, K-55 casing at 3838'.
 Cmt lead w/ 750 sx Class B 50/50 poz cmt w/ 6% gel (13.3 ppg) tailed w/ 50 sx Class B cmt (15.6 ppg). Circ 30 sx cmt to surface.

Production Casing (8/21/1974)
 Drilled 6-3/4" production hole to 8282'. Set 214 jts 4-1/2", 11.6#, K-55 casing at 8282'.
 DV tool at 5961'.

1st Stage: Cmt lead w/ 200 sx Class B 50/50 poz w/ 6% gel (13.3 ppg). Tailed w/ 50 sx Cmt tail w/ 50 sx Class B cmt (15.5 ppg). TOC at 6348' per 2025 RBL.
 2nd Stage: Cmt lead w/ 425 sx Class B 50/50 poz x/ 6% gel (13.3 ppg). Tailed w/ 100 sx Class B cmt (15.6 ppg). TOC at 2745' & bottom of cmt at 6028' per 2025 RBL.

Tubing: NA - P&A
 Length (ft)
 KB 13

Artificial Lift:
 NA

Perforations:
U DK (8060'-8073'): 4 SPF. Acidized w/ 500 gal 15% HCL. Frac w/ 10,000# 40/60 sand & 50,200# 20/40 sand in unknown volume of My-T-Frac fluid.
L DK (8106'-8186'): 8106'-13', 8124'-34', 8143'-63', 8180'-86' at 2 SPF. Acidized w/ 2000 gal 15% HCL. Frac w/ 10,000# 40/60 sand, 50,200# 20/40 sand in 37,500 My-T-Frac fluid.

Formations:

Formation	Depth (ft)	Formation	Depth (ft)
Nacimiento	1268'	Mesaverde	5616'
Ojo Alamo	2685'	Mancos	5950'
Kirtland	2875'	Gallup	7216'
Fruitland	3311'	Graneros	7925'
Pictured Cliffs	3440'	Dakota	8056'

Additional Notes:
09/1974 Initial completion. Drilled & completed DK. 2-3/8" tubing was set at 8001' with a Model D packer on bottom. (EOT depth corrected to 13' KB, reported at 7990' w/o KB).
06/2025 Wellbore isolation. Scan tbg (0y, 2b, 132g, 119r). Pulled packer & set CICR at 8010'. Ran radial bond log (RBL) from 8010' to surface & set 2-3/8" tbg at 5607' w/ SN at 5606'.



United States Department of the Interior

BUREAU OF LAND MANAGEMENT
Farmington District Office
6251 College Boulevard, Suite A
Farmington, New Mexico 87402
<http://www.blm.gov/nm>



CONDITIONS OF APPROVAL

July 31, 2025

Notice of Intent - Plug and Abandonment

Operator: LOGOS Operating LLC
Lease: NMSF078773
Well(s): Rosa Unit 55, API # 30-039-20923
Location: NESE Sec 34 T31N R5W (Rio Arriba County, NM)
Sundry Notice ID#: 2866021

The updated Notice of Intent to Plug and Abandon is accepted with the following Conditions of Approval (COA):

1. Plugging operations authorized are subject to the attached "General Requirements for Permanent Abandonment of Wells on Federal and Indian Lease."
2. Provide a copy of bond log to BLM Petroleum Engineers Kenny Rennick and Matthew Kade by email at krennick@blm.gov and mkade@blm.gov.
3. **Notification:** Farmington Field Office is to be notified at least 24 hours before the plugging operations commence at (505) 564-7750.
4. **Deadline of Completion of Operations:** Complete the plugging operation before May 16, 2026. If unable to meet the deadline, notify the Bureau of Land Management's Farmington Field Office prior to the deadline via Sundry Notice (Form 3160-5) Notice of Intent detailing the reason for the delay and the date the well is to be plugged.

You are also required to place cement excesses per 4.2 and 4.4 of the attached General Requirements. Any estimated minimum sacks provided in procedure modification include necessary excesses.

Office Hours: 7:45 a.m. to 4:30 p.m.

Matthew Kade (mkade@blm.gov/505-564-7736) / Kenny Rennick (krennick@blm.gov/505-564-7742)

BLM - FFO - Geologic Report**Date Completed**

6/4/2025

Well No. Rosa Unit No 55
Lease No. NMSF078773

Surf. Loc. 1510
Sec

FSL 1170
34 T31N

FEL
R5W

US Well No. 3003920923

Operator Logos Operating LLC

TVD 8282

Elevation GL

PBTD 8237

6576

County Rio Arriba

Formation Blanco Mesa Verde-Dakota

Elevation Est. KB 6589

State

New Mexico

Geologic Formations**Est. tops Subsea Elev.****Remarks**

San Jose Fm.

Surface

Nacimiento Fm.

1268

5321

Surface /fresh water sands

Ojo Alamo Ss

2685

3904

Fresh water aquifer

Kirtland Fm.

2875

3714

Fruitland Fm.

3311

3278

Coal/gas/possible water

Pictured Cliffs

3400

3189

Possible gas/water

Lewis Shale (Main)

3465

3124

Source rock

Huerfanito Bentonite

4385

2204

Reference bed

Cliff House Ss

5616

973

Possible gas/water

Menefee Fm.

5649

940

Coal/water/possible gas

Point Lookout Fm.

5854

735

Possible gas/water

Mancos Shale

5950

639

Source rock

DV Tool

5961

628

Gallup

7216

-627

Oil & gas

Juana Lopez

7720

-1131

Bridge Creek/Greenhorn

7880

-1291

Graneros Shale

7925

-1336

Dakota Ss

8056

-1467

Possible gas/water

Remarks:Reference Wells:

-Vertical wellbore, all formation depths are TVD from KB at the wellhead.

-Add a plug to cover the Gallup at 7216'.

- Modify Plug 2 to cover the DV tool. Move the BOC to 6011'.

- Modify Plug 3 to account for the BLM geologist's picks for the Cliff House. Move the plug BOC to 5666' and the TOC to 5516'.

- Modify Plug 4 to cover the Ojo Alamo. Move the TOC to 2585'.

Logos Operating LLC
Same

Prepared by: Walter Gage

**GENERAL REQUIREMENTS FOR
PERMANENT ABANDONMENT OF WELLS ON FEDERAL AND INDIAN LEASES
FARMINGTON FIELD OFFICE**

1.0 The approved plugging plans may contain variances from the following minimum general requirements.

1.1 Modification of the approved plugging procedure is allowed only with the prior approval of the Authorized Officer, Farmington Field Office.

1.2 Requirements may be added to address specific well conditions.

2.0 Materials used must be accurately measured. (densometer/scales)

3.0 A tank or lined pit must be used for containment of any fluids from the wellbore during plugging operations and all pits are to be fenced with woven wire. These pits will be fenced on three sides and once the rig leaves location, the fourth side will be fenced.

3.1 Pits are not to be used for disposal of any hydrocarbons. If hydrocarbons are present in the pit, the fluids must be removed prior to filling in.

4.0 All cement plugs are to be placed through a work string. Cement may be bull-headed down the casing with prior approval. Cement caps on top of bridge plugs or cement retainers may be placed by dump bailer.

4.1 The cement shall be as specified in the approved plugging plan.

4.2 All cement plugs placed inside casing shall have sufficient volume to fill a minimum of 100' of the casing, or annular void(s) between casings, plus an excess volume sufficient to provide for 50 linear feet of fill above the plug.

4.3 Surface plugs may be no less than 50' in length.

4.4 All cement plugs placed to fill annular void(s) between casing and the formation shall be of sufficient volume to fill a minimum of 100' of the annular space plus 100% excess, calculated using the bit size, or 100' of annular capacity, determined from a caliper log, plus an excess volume sufficient to provide for 50 linear feet of fill above the plug.

4.5 All cement plugs placed to fill an open hole shall be of sufficient volume to fill a minimum of 100' of hole, as calculated from a caliper log, plus an excess volume sufficient to provide for 50 linear feet of fill above the plug. In the absence of a caliper log, an excess of 100% shall be required.

4.6 **A cement bond log or other accepted cement evaluation tool is required to be run if one had not been previously ran or cement did not circulate to surface during the original casing cementing job or subsequent cementing jobs.**

5.0 All cement plugs spotted across, or above, any exposed zone(s), when; the wellbore is not full of fluid or the fluid level will not remain static, and in the case of lost circulation or partial returns during cement placement, shall be tested by tagging with the work string.

- 5.1 The top of any cement plug verified by tagging must be at or above the depth specified in the approved plan, without regard to any excess.
- 5.2 Testing will not be required for any cement plug that is mechanically contained by use of a bridge plug and/or cement retainer, if casing integrity has been established.
- 5.3 Any cement plug which is the only isolating medium, for a fresh water interval or a zone containing a prospectively valuable deposit of minerals, shall be tested by tagging.
- 5.4 If perforations are required below the surface casing shoe, a 30 minute minimum wait time will be required to determine if gas and/or water flows are present. If flow is present, the well will be shut-in for a minimum of one hour and the pressure recorded. Short or long term venting may be necessary to evacuate trapped gas. **If only a water flow occurs with no associated gas, shut well in and record the pressures. Contact the Engineer as it may be necessary to change the cement weight and additives.**

6.0 Before setting any cement plugs the hole needs to be rolled. All wells are to be controlled by means of a fluid that is to be of a weight and consistency necessary to stabilize the wellbore. This fluid shall be left in place as filler between all plugs.

- 6.1 Drilling mud may be used as the wellbore fluid in open hole plugging operations.
- 6.2 The wellbore fluid used in cased holes shall be of sufficient weight to balance known pore pressures in all exposed formations.

7.0 A blowout preventer and related equipment (BOPE) shall be installed and tested prior to working in a wellbore with any exposed zone(s); (1) that are over pressured, (2) where the pressures are unknown, or (3) known to contain H₂S.

8.0 Within 30 days after plugging work is completed, file a Sundry Notice, Subsequent Report of Abandonment (Form 3160-5), through the Automated Fluid Minerals Support System (AFMSS) with the Field Manager, Bureau of Land Management, 6251 College Blvd., Suite A, Farmington, NM 87402. The report should show the manner in which the plugging work was carried out, the extent, by depth(s), of cement plugs placed, and the size and location, by depth(s), of casing left in the well. Show date well was plugged.

9.0 All permanently abandoned wells are to be marked with a permanent monument as specified in 43 CFR 3162.6(d) and 43 CFR 3172.12(a)(10). Unless otherwise approved.

10.0 If this well is located in a Specially Designated Area (SDA), compliance with the appropriate seasonal closure requirements will be necessary.

All of the above are minimum requirements. Failure to comply with the above conditions of approval may result in an assessment for noncompliance and/or a Shut-in Order being issued pursuant to 43 CFR 3163.1. You are further advised that any instructions, orders or decisions issued by the Bureau of Land Management are subject to administrative review pursuant to 43 CFR 3165.3 and appeal pursuant to 43 CFR 3165.4 and 43 CFR 4.700.

Sante Fe Main Office
Phone: (505) 476-3441

General Information
Phone: (505) 629-6116

Online Phone Directory
<https://www.emnrd.nm.gov/ocd/contact-us>

State of New Mexico
Energy, Minerals and Natural Resources
Oil Conservation Division
1220 S. St Francis Dr.
Santa Fe, NM 87505

CONDITIONS

Action 490851

CONDITIONS

Operator: LOGOS OPERATING, LLC 2010 Afton Place Farmington, NM 87401	OGRID: 289408
	Action Number: 490851
	Action Type: [C-103] NOI Plug & Abandon (C-103F)

CONDITIONS

Created By	Condition	Condition Date
loren.diede	Notify the OCD inspection supervisor via email 24 hours prior to beginning Plug & Abandon (P&A) operations.	8/4/2025
loren.diede	Please submit the RBL that was run 6-13-2025 into NMOCD Well Log file via electronic permitting prior to P&A.	8/4/2025
loren.diede	NMOCD concurs with BLM COAs.	8/4/2025