

Submit a Copy To Appropriate District
Office
District I – (575) 393-6161
1625 N. French Dr., Hobbs, NM 88240
District II – (575) 748-1283
811 S. First St., Artesia, NM 88210
District III – (505) 334-6178
1000 Rio Brazos Rd., Aztec, NM 87410
District IV – (505) 476-3460
1220 S. St. Francis Dr., Santa Fe, NM
87505

State of New Mexico
Energy, Minerals and Natural Resources

Form C-103
Revised July 18, 2013

OIL CONSERVATION DIVISION
1220 South St. Francis Dr.
Santa Fe, NM 87505

WELL API NO. 30-015-32795
5. Indicate Type of Lease STATE <input type="checkbox"/> FEE <input checked="" type="checkbox"/> FED <input type="checkbox"/>
6. State Oil & Gas Lease No.
7. Lease Name or Unit Agreement Name Allen Com
8. Well Number 2
9. OGRID Number 14744
10. Pool name or Wildcat Carlsbad; Morrow, South
4. Well Location Unit Letter <u>H</u> : <u>1650</u> feet from the <u>North</u> line and <u>990</u> feet from the <u>East</u> line Section <u>31</u> Township <u>22S</u> Range <u>27E</u> NMPM <u>Eddy</u> County
11. Elevation (Show whether DR, RKB, RT, GR, etc.) 3174

SUNDRY NOTICES AND REPORTS ON WELLS

(DO NOT USE THIS FORM FOR PROPOSALS TO DRILL OR TO DEEPEN OR PLUG BACK TO A DIFFERENT RESERVOIR. USE "APPLICATION FOR PERMIT" (FORM C-101) FOR SUCH PROPOSALS.)

1. Type of Well: Oil Well ☒ Gas Well ☐ Other

2. Name of Operator
Mewbourne Oil Company

3. Address of Operator
PO Box 5270, Hobbs NM 88241

12. Check Appropriate Box to Indicate Nature of Notice, Report or Other Data

NOTICE OF INTENTION TO:

PERFORM REMEDIAL WORK ☐ PLUG AND ABANDON ☒
TEMPORARILY ABANDON ☐ CHANGE PLANS ☐
PULL OR ALTER CASING ☐ MULTIPLE COMPL ☐
DOWNHOLE COMMINGLE ☐
CLOSED-LOOP SYSTEM ☐
OTHER: ☐

SUBSEQUENT REPORT OF:

REMEDIAL WORK ☐ ALTERING CASING ☐
COMMENCE DRILLING OPNS. ☐ P AND A ☐
CASING/CEMENT JOB ☐
OTHER: ☐

13. Describe proposed or completed operations. (Clearly state all pertinent details, and give pertinent dates, including estimated date of starting any proposed work). SEE RULE 19.15.7.14 NMAC. For Multiple Completions: Attach wellbore diagram of proposed completion or recompletion.

Please see attached P&A procedure, current and proposed Wellbore Schematics.

Spud Date:

Rig Release Date:

I hereby certify that the information above is true and complete to the best of my knowledge and belief.

SIGNATURE John Harrison TITLE Regulatory Specialist DATE 07/30/25

Type or print name John Harrison E-mail address: john.harrison@mewbourne.com PHONE: 575-393-5905

For State Use Only

APPROVED BY: _____ TITLE _____ DATE _____

Conditions of Approval (if any):

Mewbourne Oil Company

P&A procedure

Submitted By: Ryan Hynes

Wellname: Allen Com #2

Location: 1650' FNL & 990' FEL
Sec 31, T22S, R27E
Eddy Co, NM

Date: 07/25/2025

Surf Csg: 13 3/8" 61#

Surf Csg @: 359'

Int Csg: 9 5/8" 36#

Int Csg @: 5320'

Prod Csg: 5 1/2" 17#

Prod @: 11890'

While attempting to cut off WH found surface casing leaking gas. Attempted to pump down surface casing with no success. This is our plan of action to remedy this leak.

Procedure:

- 1) MIRU P&A rig.
- 2) NU BOP.
- 3) PU 4 3/4" drill bit and 3 1/8" drill collars.
- 4) Drill surface plug.
- 5) POOH & LD bit and drill collars.
- 6) MIRU WL truck.
- 7) RIH W/3 1/8" perf gun loaded w/deep penetrating charges.
- 8) Perf @ 900' & POOH w/WL
- 9) SWI & attempt to establish an injection rate.
- 10) If rate is established squeeze w/380 sks class C neat down to 9 5/8" DV tool @1899'.
- 11) Bubble test 5 1/2" casing and 9 5/8 x 13 3/8" annuls.
- 12) If bubble test passes RIH w/tbg open ended and circulate cement to surface.
- 13) RDMO P&A rig
- 14) Cut off well head and verify cement to surface on all strings.
- 15) Install dry hole marker.

Allen Com #2

API #: 30-015-32795

1650' FNL & 990' FEL, Sec 31, T22S, R27E, Eddy Co., NM

Surface

17 1/2" hole
13 3/8" 61#
Set @ 359'
Circ 145 sks to pit

Top of Salt

TVD: 1134'

Base of Salt

TVD: 1837'

Delaware

TVD: 1992'

Intermediate

12 1/4" hole
9 5/8" 36#
Set @ 5320'

Bone Spring

TVD: 5331'

Wolfcamp

TVD: 8675'

Strawn

TVD: 10,218'

Atoka

TVD: 10,524'

Morrow

TVD: 11,287'

Production

7 7/8" hole
5 1/2" 17# N80
Set @ 11,890'
TOC @ 9520' by CBL

TD @ 11,891'

180 sks Class C

24 bbls MLF

320 sks Class C

122 bbls MLF

50 sks Class C

32 bbls MLF

60sks Class H

CIBP

15 sxs Class H

CIBP

15 sxs Class H

CIBP

Calc TOC @
100'

Perf @ 420'

TOC @ ~1018'

DV Tool @1899'

Perf @ 2050'

TOC @ ~5203'

Perf @ 5380'

TOF @ ~7919'

TOC @ ~8292'

Perf @ 8725'

CBL TOC @ 9530'

TOC @ 10,136'

CIBP @ 10533'

Perfs
10,583' - 10,591'

CIBP @ 11330'

Perfs
11,388' - 11,395'

CIBP @ 11,720'

Perfs
11,747' - 11,757'

Length of Plug (5.5")	
Class C Yield	1.32
42	sks
55.44	ft^3
9.874	bbls
426	ft

Mud	
1030	ft
134	ft^3
24	bbls

Length of Plug (5.5")	
Class C Yield	1.32
100	sks
132	ft^3
23.508	bbls
1013	ft
1037	TOC

Mud	
5220	ft
681	ft^3
122	bbls

Length of Plug (5.5")	
Class C Yield	1.32
16	sks
21.12	ft^3
3.761	bbls
162	ft
5218	TOC

Mud	
8525	ft
1113	ft^3
199	bbls

Length of Plug (5.5")	
Class H Yield	1.17
22	sks
25.74	ft^3
4.584	bbls
198	ft
8527	TOC

Mud	
1286	ft
168	ft^3
30	bbls

Length of Plug	
Class H Yield	1.17
60	sks
70.2	ft^3
13	bbls
539	ft
10011	TOC

Length of Plug (9 5/8")	
Class C Yield	1.32
86	sks
113.52	ft^3
20.217	bbls
422	ft

Length of Plug (9 5/8")	
Class C Yield	1.32
207	sks
273.24	ft^3
48.663	bbls
1016	ft
1034	TOC

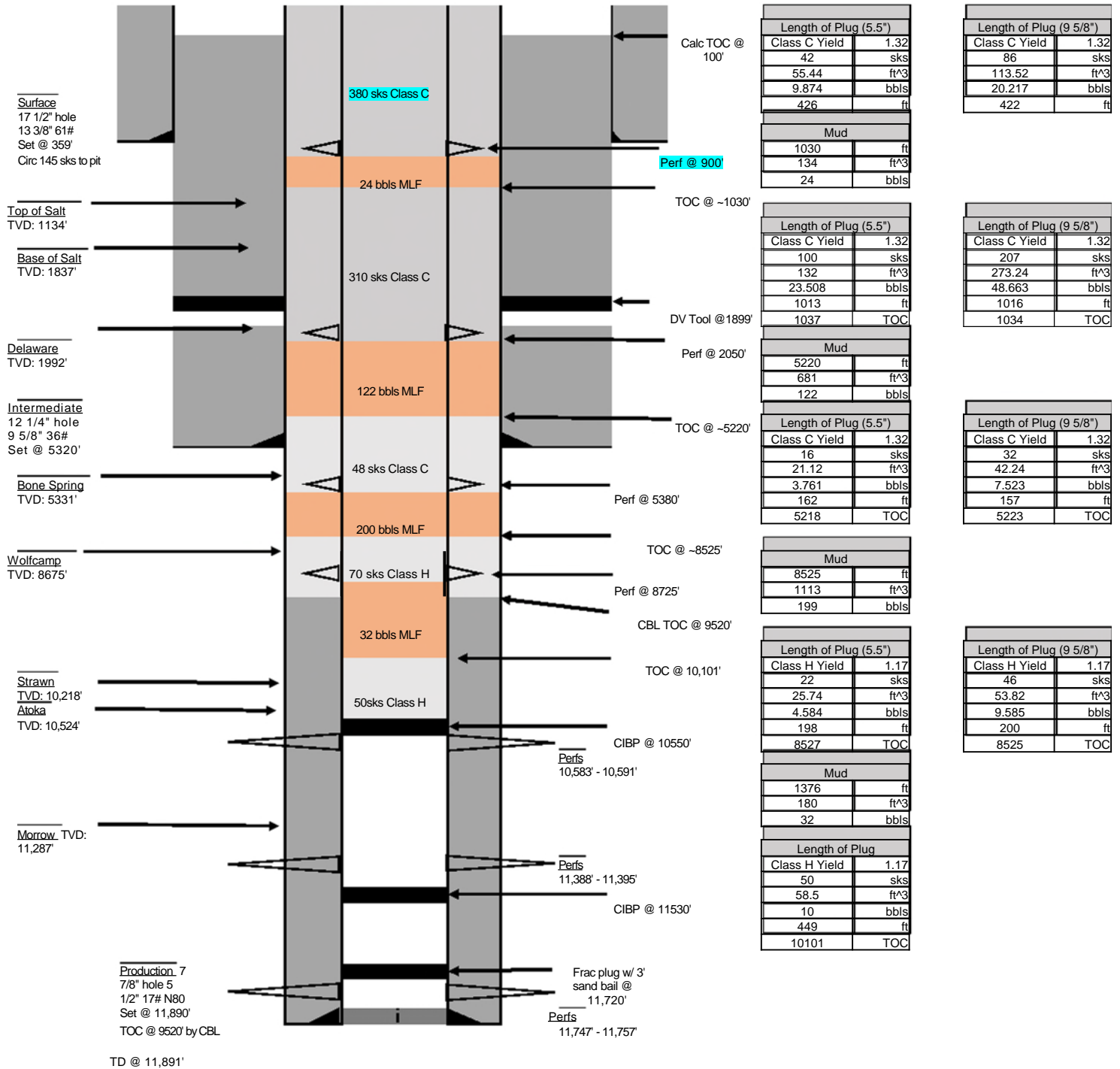
Length of Plug (9 5/8")	
Class C Yield	1.32
32	sks
42.24	ft^3
7.523	bbls
157	ft
5223	TOC

Length of Plug (9 5/8")	
Class H Yield	1.17
46	sks
53.82	ft^3
9.585	bbls
200	ft
8525	TOC

Allen Com #2 - Proposed

API #: 30-015-32795

1650' FNL & 990' FEL, Sec 31, T22S, R27E, Eddy Co., NM



Sante Fe Main Office
Phone: (505) 476-3441

General Information
Phone: (505) 629-6116

Online Phone Directory
<https://www.emnrd.nm.gov/ocd/contact-us>

State of New Mexico
Energy, Minerals and Natural Resources
Oil Conservation Division
1220 S. St Francis Dr.
Santa Fe, NM 87505

CONDITIONS

Action 490020

CONDITIONS

Operator: MEWBOURNE OIL CO P.O. Box 5270 Hobbs, NM 88241	OGRID: 14744
	Action Number: 490020
	Action Type: [C-103] NOI Plug & Abandon (C-103F)

CONDITIONS

Created By	Condition	Condition Date
gcordero	Bubble test after cementing to surface.	8/7/2025