

Form 3160-5
(June 2015)

UNITED STATES
DEPARTMENT OF THE INTERIOR
BUREAU OF LAND MANAGEMENT

FORM APPROVED
OMB No. 1004-0137
Expires: January 31, 2018

SUNDRY NOTICES AND REPORTS ON WELLS
Do not use this form for proposals to drill or to re-enter an abandoned well. Use Form 3160-3 (APD) for such proposals.

5. Lease Serial No. **NMNM 0022636**
6. If Indian, Allottee or Tribe Name
N/A

SUBMIT IN TRIPLICATE - Other instructions on page 2		7. If Unit of CA/Agreement, Name and/or No. Cato San Andres Unit
1. Type of Well <input checked="" type="checkbox"/> Oil Well <input type="checkbox"/> Gas Well <input type="checkbox"/> Other		8. Well Name and No. Cato San Andres Unit #142
2. Name of Operator Shell Oil Company (Western Division)		9. API Well No. 30-005-20105
3a. Address P.O. Box 576, Houston, TX 77210	3b. Phone No. (include area code) (832) 337-2434	10. Field and Pool or Exploratory Area Cato; San Andres
4. Location of Well (Footage, Sec., T.,R.,M., or Survey Description) K-23-08S-30E 1980 FSL 1980 FWL		11. Country or Parish, State Chaves County, New Mexico, USA

12. CHECK THE APPROPRIATE BOX(ES) TO INDICATE NATURE OF NOTICE, REPORT OR OTHER DATA					
TYPE OF SUBMISSION	TYPE OF ACTION				
<input type="checkbox"/> Notice of Intent	<input type="checkbox"/> Acidize	<input type="checkbox"/> Deepen	<input type="checkbox"/> Production (Start/Resume)	<input type="checkbox"/> Water Shut-Off	
	<input type="checkbox"/> Alter Casing	<input type="checkbox"/> Hydraulic Fracturing	<input type="checkbox"/> Reclamation	<input type="checkbox"/> Well Integrity	
<input checked="" type="checkbox"/> Subsequent Report	<input type="checkbox"/> Casing Repair	<input type="checkbox"/> New Construction	<input type="checkbox"/> Recomplete	<input type="checkbox"/> Other	
	<input type="checkbox"/> Change Plans	<input checked="" type="checkbox"/> Plug and Abandon	<input type="checkbox"/> Temporarily Abandon		
<input type="checkbox"/> Final Abandonment Notice	<input type="checkbox"/> Convert to Injection	<input type="checkbox"/> Plug Back	<input type="checkbox"/> Water Disposal		

13. Describe Proposed or Completed Operation: Clearly state all pertinent details, including estimated starting date of any proposed work and approximate duration thereof. If the proposal is to deepen directionally or recompleate horizontally, give subsurface locations and measured and true vertical depths of all pertinent markers and zones. Attach the Bond under which the work will be perfonned or provide the Bond No. on file with BLM/BIA. Required subsequent reports must be filed within 30 days following completion of the involved operations. If the operation results in a multiple completion or recompleation in a new interval, a Form 3160-4 must be filed once testing has been completed. Final Abandonment Notices must be filed only after all requirements, including reclamation, have been completed and the operator has detennined that the site is ready for final inspection.)

Please refer to the attached Plug and Abandonment End of Well Report.

Accepted for Record

14. I hereby certify that the foregoing is true and correct. Name (Printed/Typed) Samantha Baker	Title Legacy Program Manager
Signature	Date 08/25/2025

THE SPACE FOR FEDERAL OR STATE OFFICE USE		
Approved by	Title Petroleum Engineer	Date 08/26/2025
	Office RFO	

Conditions of approval, if any, are attached. Approval of this notice does not warrant or certify that the applicant holds legal or equitable title to those rights in the subject lease which would entitle the applicant to conduct operations thereon.

Title 18 U.S.C Section 1001 and Title 43 U.S.C Section 1212, make it a crime for any person knowingly and willfully to make to any department or agency of the United States any false, fictitious or fraudulent statements or representations as to any matter within its jurisdiction.

(Instructions on page 2)

GENERAL INSTRUCTIONS

This form is designed for submitting proposals to perform certain well operations and reports of such operations when completed as indicated on Federal and Indian lands pursuant to applicable Federal law and regulations. Any necessary special instructions concerning the use of this form and the number of copies to be submitted, particularly with regard to local area or regional procedures and practices, are either shown below, will be issued by or may be obtained from the local Federal office.

SPECIFIC INSTRUCTIONS

Item 4 - Locations on Federal or Indian land should be described in accordance with Federal requirements. Consult the local Federal office for specific instructions.

Item 13: Proposals to abandon a well and subsequent reports of abandonment should include such special information as is required by the local Federal office. In addition, such proposals and reports should include reasons for the abandonment; data on any former or present productive zones or other zones with present significant fluid contents not sealed off by cement or otherwise; depths (top and bottom) and method of placement of cement plugs; mud or other material placed below, between and above plugs; amount, size, method of parting of any casing, liner or tubing pulled and the depth to the top of any tubing left in the hole; method of closing top of well and date well site conditioned for final inspection looking for approval of the abandonment. If the proposal will involve **hydraulic fracturing operations**, you must comply with 43 CFR 3162.3-3, including providing information about the protection of usable water. Operators should provide the best available information about all formations containing water and their depths. This information could include data and interpretation of resistivity logs run on nearby wells. Information may also be obtained from state or tribal regulatory agencies and from local BLM offices.

NOTICES

The privacy Act of 1974 and the regulation in 43 CFR 2.48(d) provide that you be furnished the following information in connection with information required by this application.

AUTHORITY: 30 U.S.C. 181 et seq., 351 et seq., 25 U.S.C. 396; 43 CFR 3160.

PRINCIPAL PURPOSE: The information is used to: (1) Evaluate, when appropriate, approve applications, and report completion of subsequent well operations, on a Federal or Indian lease; and (2) document for administrative use, information for the management, disposal and use of National Resource lands and resources, such as: (a) evaluating the equipment and procedures to be used during a proposed subsequent well operation and reviewing the completed well operations for compliance with the approved plan; (b) requesting and granting approval to perform those actions covered by 43 CFR 3162.3-2, 3162.3-3, and 3162.3-4; (c) reporting the beginning or resumption of production, as required by 43 CFR 3162.4-1(c) and (d) analyzing future applications to drill or modify operations in light of data obtained and methods used.

ROUTINE USES: Information from the record and/or the record will be transferred to appropriate Federal, State, local or foreign agencies, when relevant to civil, criminal or regulatory investigations or prosecutions in connection with congressional inquiries or to consumer reporting agencies to facilitate collection of debts owed the Government.

EFFECT OF NOT PROVIDING THE INFORMATION: Filing of this notice and report and disclosure of the information is mandatory for those subsequent well operations specified in 43 CFR 3162.3-2, 3162.3-3, 3162.3-4.

The Paperwork Reduction Act of 1995 requires us to inform you that:

The BLM collects this information to evaluate proposed and/or completed subsequent well operations on Federal or Indian oil and gas leases.

Response to this request is mandatory.

The BLM would like you to know that you do not have to respond to this or any other Federal agency-sponsored information collection unless it displays a currently valid OMB control number.

BURDEN HOURS STATEMENT: Public reporting burden for this form is estimated to average 8 hours per response, including the time for reviewing instructions, gathering and maintaining data, and completing and reviewing the form. Direct comments regarding the burden estimate or any other aspect of this form to U.S. Department of the Interior, Bureau of Land Management (1004-0137), Bureau Information Collection Clearance Officer (WO-630), 1849 C St., N.W., Mail Stop 401 LS, Washington, D.C. 20240

LANGAN**Technical
Memorandum**

300 Union Boulevard, Suite 405 Lakewood, CO 80228 T: 303.262.2000 F: 303.262.2001

To: Bureau of Land Management (BLM)

From: Langan Engineering and Environmental Services

Info: Shell Oil Company (Western Division)

Date: August 22, 2025

Re: Plug and Abandonment – End of Well Report
Cato San Andres Unit #142 / API 30-005-20105
Section 23, Township 8S, Range 30E
Langan Project No.: 781014301

Work Summary:

07/01/2025 - Pre-job safety meeting - discussed Complacency, Equipment Inspection, JSA review. Inspected equipment. Resumed RD WOR & equipment on well #150. MIRU WOR on #142, Spotted open top tank, catwalk & pipe racks, accumulator NPT. Waited for Hydrovac to clean Drake open top tank. Hydrovac arrive onsite, cleaned open top tank. Secured location, shut down for night.

07/02/2025 – Shut down for Weather July 2nd. July 3rd through Jul 9th UFO Festival.

07/09/2025 – Meet at Drake yard. Perform pre-job safety meeting. Discuss day's plan, Rooding equipment and safety concerns. Crew travel to location with trailers. Continue rigging up equipment. Unload workstring, prep and tally. RU safety chains, signs and windsocks. Unload BOP accumulator and run hoses. Haul water from town. Prep to unseat rod pump. Perform PM on WOR. Ensure everything is ready to pull rods. Shut down for night. Crew travel.

07/10/2025 – Crew travel. Conduct pre-job safety meeting. Review JSAs. Discuss day's operational and safety goals. Discuss LD of rods, WH repair and BOP NU 70. Unscrew stuffing box. Pull 8K and unseat pump. SW: 6K. LD polish rod. POOH with rods and pump. Pull and LD polish rod, 2', 4', 6' & 8'-3/4" pony rods. 103-3/4" rods, 20-7/8" rods and pmp. Prep to unland tubing. Cut away table on wellhead. Attempt to unland tubing. While pulling on tubing SW: 15K and free. But 4.5" casing was parted below Larkin head. Welder clean up 4.5" stump above the

Technical Memorandum

Plug and Abandonment – End of Well Report
Cato San Andres Unit #142 / API 30-005-20105
Section 23, Township 8S, Range 30E
Langan Project No.: 781014301
August 22, 2025 - Page 2 of 4

9-5/8". Strip on 4.5" bell nipple and weld on. Strip on Drake wellhead and BOP. Torque and test crew on location in morning. RU floor and tubing equipment. Secure well and shut down for night. Wait on torque and test crew. Crew travel.

07/11/2025 – Crew travel. Conduct pre-job safety meeting. Review JSAs. Discuss days operational and safety goals. Discuss Running and pulling tubing. Torque up BOP. Pressure test BOP. POOH with 108 joints, seat nipple and bull plug. MU 3.875" tri-cone and RIH to depth of 3536' with 111 joints. POOH with bit and workstring. Make up 4.5" CIBP. RIH to 3500'. Set plug and sting off. LD 11 joints and secure well. NPT... Drake pump truck inoperable to clean wellbore. Shut down for night. Crew travel.

07/12/2025 – Crew travel. Conduct PRE-JOB SAFETY MEETING. Review JSA's. Discuss days operational and safety goals. Discuss Pumping and wireline operations. NPT...Wait on lightning and wind to stop. NPT...Wind is 30 + mph, Severe rain showers and Lightning storm overhead. Decision to shut down. (WOW)

07/13/2025 – Crew travel. Conduct PRE-JOB SAFETY MEETING. Review JSAs. Discuss days operational and safety goals. Discuss Pumping and wireline operations. Make up 3.06" mule shoe and RIH. Slight tag on CIBP at 3500'. Begin circulating wellbore clean. 31 bbls to break circ. Pumped 80 bbls with 2 bpm with .25 - .9 bpm returns. SD for 5 minutes. Took 12 bbls to break. Pumped a total of 160 bbls. Minimum returns. Roughly 50 bbls of thick black oil and 10 bbls of oily water back. POOH with workstring. NU WL flange and WL single BOP. MU logging tool. Attempt to PT to 500 PSI. No visual surface leaks. RIH with CBL and log well. Fluid level was at 720'. WL tagged CIBP at 3557' WLM. 57' deeper than set. Log out. Out of hole with WL. Approx. TOC at 2555'. RD wireline. Make up 3.06" mule shoe. RIH to tag CIBP. Tag CIBP at 3602'. 4' below bottom perforation. Somehow plug slipped and fell or we pushed it. POOH with workstring. Decision made to Run another CIBP and set at 3470'. Wait on orders. Secure well. Shut down for night. Crew travel.

07/14/2025 - Crew travel. Conduct pre-job safety meeting. Review JSAs. Discuss days operational and safety goals. Discuss Pumping and wireline operations. Start equipment and

Technical Memorandum

Plug and Abandonment – End of Well Report
Cato San Andres Unit #142 / API 30-005-20105
Section 23, Township 8S, Range 30E
Langan Project No.: 781014301
August 22, 2025 - Page 3 of 4

check pressures. 4.5": 0- PSI. 9-5/8": 0 PSI. Make up 4.5" CIBP and begin RIH. Set CIBP @ 3470'. Sting out. Pick up and RIH to tag. (Good tag) RU to circulate wellbore. Begin pumping. 12 bbls to catch circulation. Good clean returns. Bbl in/bbl out. Pump Plug #1 - Pump 46 sks (9.54 bbls slurry/600' plug) of 15.6 ppg type I/II cement, 1.18 Yield with 2% CaCl₂ @ 2.0 bpm with 50 PSI and displace with 10.5 bbls FW (Estimated plug: 2870' - 3470'.) LD 21 joints. Stand back 88 joints. POOH with tubing and setting tool. Out of hole. Wait on cement until noon. Make up 3.06" mule shoe and RIH to tag TOC. Tag TOC @ 2900' KB. RU and break circulation. Shut in casing and attempt to pressure test to 500 PSI. (Bad test) Injection 1 bpm at 40 PSI. Pump Plug #2 - Pump 23 sks (4.77 bbls slurry/300' plug) of 15.6 ppg type I/II cement, 1.18 Yield with no 2% CaCl₂ @ 2.0 bpm with 50 PSI and displace with 9.5 bbls FW. Estimated plug: 2600' - 2900'. Lost circulation last 3 bbls of displacement. POOH. LD 11 joints and stand back 80 joints. Out of hole. Secure well and shut down for night. Crew travel.

07/15/2025 – Crew travel. Conduct pre-job safety meeting. Review JSAs. Discuss days operational and safety goals. Discuss Pumping and wireline operations. Start equipment and check pressures. 4.5": 0- PSI. 9-5/8": 0 PSI. Wait on orders. Make up mule shoe. RIH and tag TOC @ 2638' KB. Break circulation with 2 bbls away. Prep to pump plug. Pump Plug #3 stage #1 - Pump 35 sks (7.2 bbls slurry/455' plug) of 15.6 ppg type I/II cement, 1.18 Yield with 2% CaCl₂ @ 2.0 bpm with 50 PSI and displace with 8 bbls FW (Estimated plug: 2183' - 2638'.) POOH. Lay down 14 joints. Stand back 68 joints. Out of hole. Wait on cement. Make up mule shoe. RIH and tag TOC @ 2195' KB. Break circulation. Pump Plug #3 stage #2 - Pump 34 sks (7 bbls slurry/445' plug) of 15.6 ppg type I/II cement, 1.18 Yield with NO 2% CaCl₂ @ 2.0 bpm with 40 PSI and displace with 6.3 bbls FW (Estimated plug: 1750' - 2195'.) POOH. LD 15 joints. SB 54 joints. Out of hole. Secure well. Shut down for night & WOC overnight. Crew travel.

07/16/2025 – Crew travel. Conduct pre-job safety meeting. Review JSAs. Discuss days operational and safety goals. Discuss Pumping and wireline operations. Start equipment and check pressures. 4.5": 0- PSI. 9-5/8": 0 PSI. RIH with tubing and tag TOC @ 1750' KB. POOH. NU WL flange and BOP. RU WL and PT to 500 PSI. RIH and tag TOC @ 1750' WLM. Perforate from 1719' - 1722'. POOH and RD wireline. Make up mule shoe and RIH with work string.

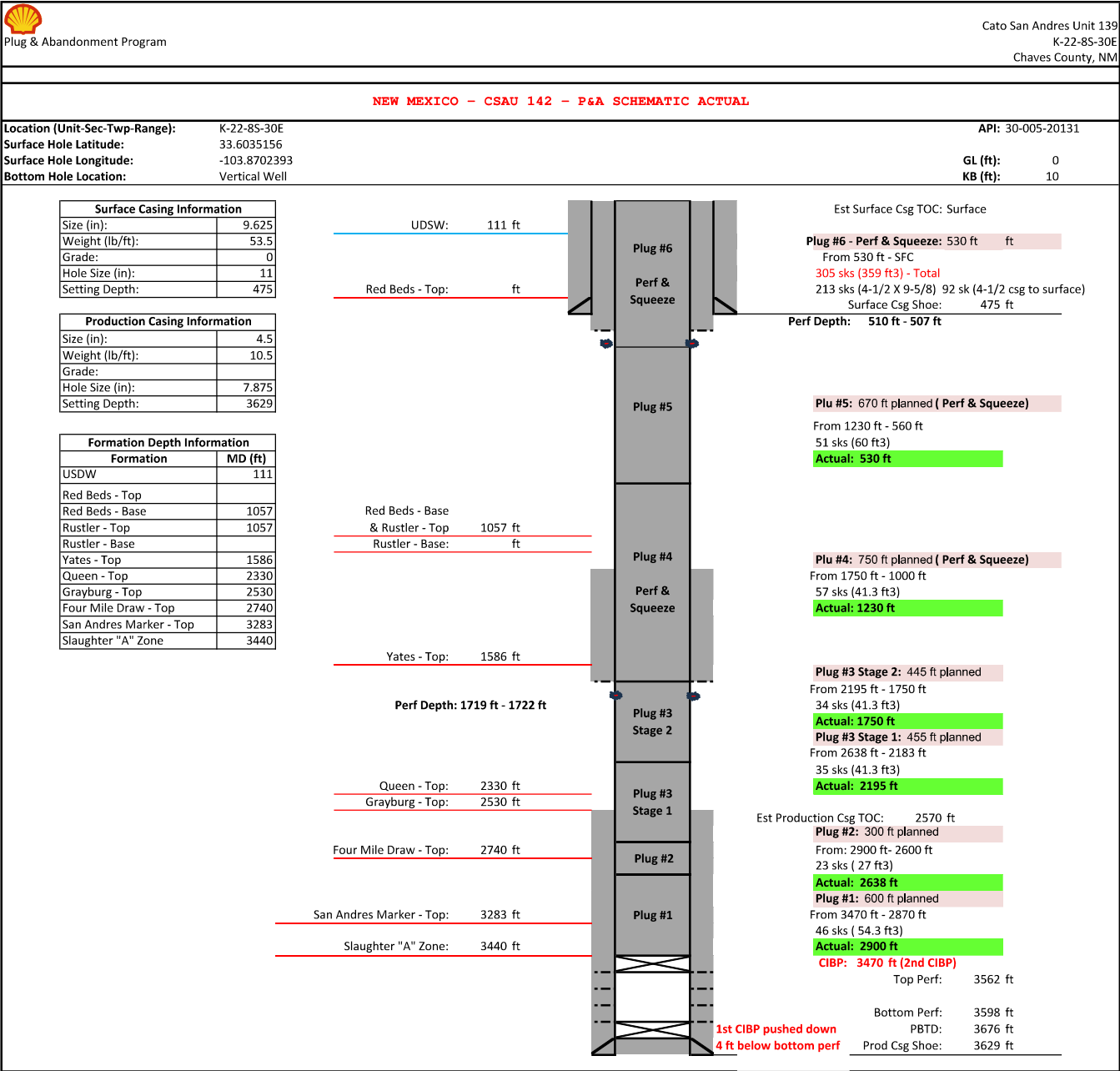
Technical Memorandum

Plug and Abandonment – End of Well Report
Cato San Andres Unit #142 / API 30-005-20105
Section 23, Township 8S, Range 30E
Langan Project No.: 781014301
August 22, 2025 - Page 4 of 4

Pump Plug #4. - Pump 57 sks (11.9 bbls slurry/750' plug) of 15.6 ppg type I/II cement, 1.18 Yield with 2% CaCl₂ @ 2.0 bpm with 50 PSI and displace with 3.5 bbls FW. Estimated plug: 1000' - 1750'. POOH. LD 25 joints. Stand back 30 joints. Out of hole. WOC Make up mule shoe. RIH and tag TOC @ 1230'. Break circulation. Pump Plug #5. - Pump 51 sks (10.6 bbls slurry/670' plug) of 15.6 ppg type I/II cement, 1.18 Yield with 2% CaCl₂ @ 2.0 bpm with 30 PSI and displace with 2 bbls FW (Estimated plug: 560' - 1230'.) POOH. LD 22 joints. Stand back 16 joints. Out of hole. Secure well. Clean mud pit and cellar. Shut down for night. WOC overnight. Crew travel.

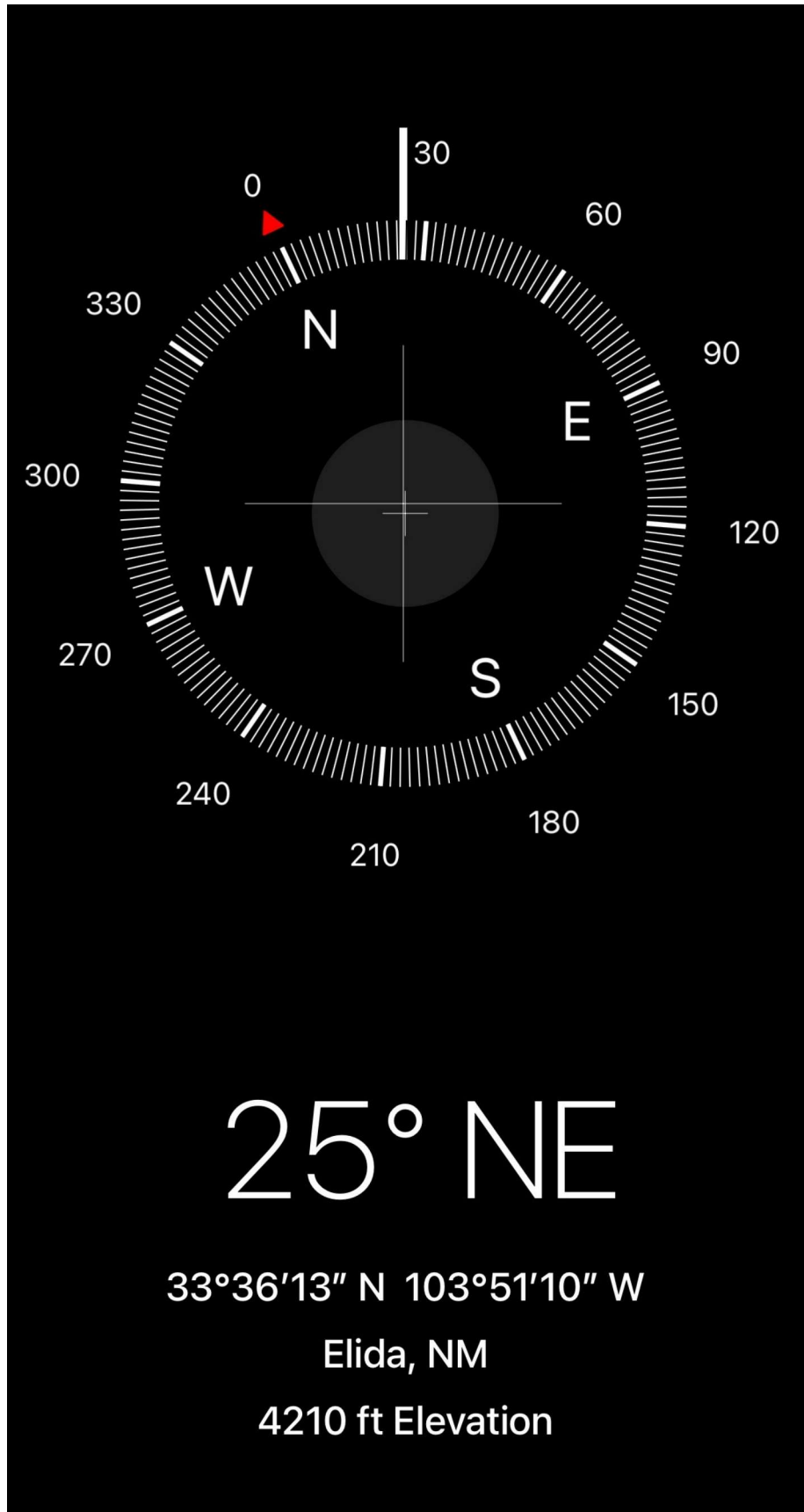
07/17/2025 – Crew travel. Conduct pre-job safety meeting. Review JSAs. Discuss days operational and safety goals. Discuss Pumping and wireline operations. Start equipment and check pressures. 4.5": 0- PSI. 9-5/8": 0 PSI. RIH & tag TOC @ 530'. Break circulation. POOH. NU WL flange and BOP. RU WL & PT. RIH and perforate 4.5" at 507'-510'. POOH. Circulate 4.5" x 9-5/8". RD WL. RIH with workstring to 530'. Pump surface plug# 6- Pump 213 sks (44.7 bbls slurry) of 15.6 ppg type I/II cement, 1.18 Yield @ 2.0 bpm with 50 PSI between 4.5" x 9-5/8" to surface. Pump 92 sks (19.3 bbls slurry) of 15.6 ppg type I/II cement, 1.18 Yield @ 2.0 bpm with 50 PSI up 4.5" casing to surface. Good cement to surface on both. Total sacks: 305. Total slurry: 64 bbls. POOH with workstring and top off 4.5". Begin RDMO. RD all support equipment. RD WOR. Release all rental equipment. Ready all equipment to demobilize. Crew travel.

07/21/2025 - Arrived on location at the CSA 142. Held safety meeting with on-site personnel. Dug out the cellar with. R/U welder on location. Performed WH cutoff. Tagged cement at 1' in 9-5/8" casing and 8' down in 4-1/2" casing. Topped off both strings with 12 sx. Installed marker per all local regulations.









Sante Fe Main Office
Phone: (505) 476-3441

General Information
Phone: (505) 629-6116

Online Phone Directory
<https://www.emnrd.nm.gov/oed/contact-us>

State of New Mexico
Energy, Minerals and Natural Resources
Oil Conservation Division
1220 S. St Francis Dr.
Santa Fe, NM 87505

CONDITIONS

Action 500656

CONDITIONS

Operator: CANO PETRO OF NEW MEXICO, INC. 801 Cherry Street Fort Worth, TX 76102	OGRID: 248802
	Action Number: 500656
	Action Type: [C-103] Sub. Plugging (C-103P)

CONDITIONS

Created By	Condition	Condition Date
loren.diede	None	8/29/2025