

Form 3160-5
(June 2015)

UNITED STATES
DEPARTMENT OF THE INTERIOR
BUREAU OF LAND MANAGEMENT

FORM APPROVED
OMB No. 1004-0137
Expires: January 31, 2018

SUNDRY NOTICES AND REPORTS ON WELLS
Do not use this form for proposals to drill or to re-enter an abandoned well. Use Form 3160-3 (APD) for such proposals.

5. Lease Serial No. NMNM 0022636
6. If Indian, Allottee or Tribe Name
N/A

SUBMIT IN TRIPLICATE - Other instructions on page 2		7. If Unit of CA/Agreement, Name and/or No. Cato San Andres Unit
1. Type of Well <input checked="" type="checkbox"/> Oil Well <input type="checkbox"/> Gas Well <input type="checkbox"/> Other		8. Well Name and No. Cato San Andres Unit #138
2. Name of Operator Shell Oil Company (Western Division)		9. API Well No. 30-005-20267
3a. Address P.O. Box 576, Houston, TX 77210	3b. Phone No. (include area code) (832) 337-2434	10. Field and Pool or Exploratory Area Cato; San Andres
4. Location of Well (Footage, Sec., T.,R.,M., or Survey Description) L-22-08S-30E 1980 FSL 660 FWL		11. Country or Parish, State Chaves County, New Mexico, USA

12. CHECK THE APPROPRIATE BOX(ES) TO INDICATE NATURE OF NOTICE, REPORT OR OTHER DATA

TYPE OF SUBMISSION	TYPE OF ACTION				
<input type="checkbox"/> Notice of Intent	<input type="checkbox"/> Acidize	<input type="checkbox"/> Deepen	<input type="checkbox"/> Production (Start/Resume)	<input type="checkbox"/> Water Shut-Off	
<input checked="" type="checkbox"/> Subsequent Report	<input type="checkbox"/> Alter Casing	<input type="checkbox"/> Hydraulic Fracturing	<input type="checkbox"/> Reclamation	<input type="checkbox"/> Well Integrity	
<input type="checkbox"/> Final Abandonment Notice	<input type="checkbox"/> Casing Repair	<input type="checkbox"/> New Construction	<input type="checkbox"/> Recomplete	<input type="checkbox"/> Other	
	<input type="checkbox"/> Change Plans	<input checked="" type="checkbox"/> Plug and Abandon	<input type="checkbox"/> Temporarily Abandon		
	<input type="checkbox"/> Convert to Injection	<input type="checkbox"/> Plug Back	<input type="checkbox"/> Water Disposal		

13. Describe Proposed or Completed Operation: Clearly state all pertinent details, including estimated starting date of any proposed work and approximate duration thereof. If the proposal is to deepen directionally or recompleate horizontally, give subsurface locations and measured and true vertical depths of all pertinent markers and zones. Attach the Bond under which the work will be perfonned or provide the Bond No. on file with BLM/BIA. Required subsequent reports must be filed within 30 days following completion of the involved operations. If the operation results in a multiple completion or recompletion in a new interval, a Form 3160-4 must be filed once testing has been completed. Final Abandonment Notices must be filed only after all requirements, including reclamation, have been completed and the operator has detennined that the site is ready for final inspection.)

Please refer to the attached Plug and Abandonment End of Well Report.

ACCEPTED FOR RECORD

14. I hereby certify that the foregoing is true and correct. Name (Printed/Typed) Samantha Baker	Title Legacy Program Manager
Signature	Date 08/25/2025

THE SPACE FOR FEDERAL OR STATE OFFICE USE

Approved by	Title Petroleum Engineer	Date 08/26/2025
Conditions of approval, if any, are attached. Approval of this notice does not warrant or certify that the applicant holds legal or equitable title to those rights in the subject lease which would entitle the applicant to conduct operations thereon.	Office RFO	

Title 18 U.S.C Section 1001 and Title 43 U.S.C Section 1212, make it a crime for any person knowingly and willfully to make to any department or agency of the United States any false, fictitious or fraudulent statements or representations as to any matter within its jurisdiction.

(Instructions on page 2)

GENERAL INSTRUCTIONS

This form is designed for submitting proposals to perform certain well operations and reports of such operations when completed as indicated on Federal and Indian lands pursuant to applicable Federal law and regulations. Any necessary special instructions concerning the use of this form and the number of copies to be submitted, particularly with regard to local area or regional procedures and practices, are either shown below, will be issued by or may be obtained from the local Federal office.

SPECIFIC INSTRUCTIONS

Item 4 - Locations on Federal or Indian land should be described in accordance with Federal requirements. Consult the local Federal office for specific instructions.

Item 13: Proposals to abandon a well and subsequent reports of abandonment should include such special information as is required by the local Federal office. In addition, such proposals and reports should include reasons for the abandonment; data on any former or present productive zones or other zones with present significant fluid contents not sealed off by cement or otherwise; depths (top and bottom) and method of placement of cement plugs; mud or other material placed below, between and above plugs; amount, size, method of parting of any casing, liner or tubing pulled and the depth to the top of any tubing left in the hole; method of closing top of well and date well site conditioned for final inspection looking for approval of the abandonment. If the proposal will involve **hydraulic fracturing operations**, you must comply with 43 CFR 3162.3-3, including providing information about the protection of usable water. Operators should provide the best available information about all formations containing water and their depths. This information could include data and interpretation of resistivity logs run on nearby wells. Information may also be obtained from state or tribal regulatory agencies and from local BLM offices.

NOTICES

The privacy Act of 1974 and the regulation in 43 CFR 2.48(d) provide that you be furnished the following information in connection with information required by this application.

AUTHORITY: 30 U.S.C. 181 et seq., 351 et seq., 25 U.S.C. 396; 43 CFR 3160.

PRINCIPAL PURPOSE: The information is used to: (1) Evaluate, when appropriate, approve applications, and report completion of subsequent well operations, on a Federal or Indian lease; and (2) document for administrative use, information for the management, disposal and use of National Resource lands and resources, such as: (a) evaluating the equipment and procedures to be used during a proposed subsequent well operation and reviewing the completed well operations for compliance with the approved plan; (b) requesting and granting approval to perform those actions covered by 43 CFR 3162.3-2, 3162.3-3, and 3162.3-4; (c) reporting the beginning or resumption of production, as required by 43 CFR 3162.4-1(c) and (d) analyzing future applications to drill or modify operations in light of data obtained and methods used.

ROUTINE USES: Information from the record and/or the record will be transferred to appropriate Federal, State, local or foreign agencies, when relevant to civil, criminal or regulatory investigations or prosecutions in connection with congressional inquiries or to consumer reporting agencies to facilitate collection of debts owed the Government.

EFFECT OF NOT PROVIDING THE INFORMATION: Filing of this notice and report and disclosure of the information is mandatory for those subsequent well operations specified in 43 CFR 3162.3-2, 3162.3-3, 3162.3-4.

The Paperwork Reduction Act of 1995 requires us to inform you that:

The BLM collects this information to evaluate proposed and/or completed subsequent well operations on Federal or Indian oil and gas leases.

Response to this request is mandatory.

The BLM would like you to know that you do not have to respond to this or any other Federal agency-sponsored information collection unless it displays a currently valid OMB control number.

BURDEN HOURS STATEMENT: Public reporting burden for this form is estimated to average 8 hours per response, including the time for reviewing instructions, gathering and maintaining data, and completing and reviewing the form. Direct comments regarding the burden estimate or any other aspect of this form to U.S. Department of the Interior, Bureau of Land Management (1004-0137), Bureau Information Collection Clearance Officer (WO-630), 1849 C St., N.W., Mail Stop 401 LS, Washington, D.C. 20240

LANGAN**Technical
Memorandum**

300 Union Boulevard, Suite 405 Lakewood, CO 80228 T: 303.262.2000 F: 303.262.2001

To: Bureau of Land Management (BLM)

From: Langan Engineering and Environmental Services

Info: Shell Oil Company (Western Division)

Date: August 25, 2025

Re: Plug and Abandonment – End of Well Report
Cato San Andres Unit #138 / API 30-005-20267
Section 22, Township 8S, Range 30E
Langan Project No.: 781014301

Work Summary:

08/03/2024 - Moved equipment from well #198. Pre-job safety meeting - updated JSAs, inspected work areas. NPT - Wait for H2S meter to sweep cellar area. Prep wellhead for Hot Tap, hand dig trench for HTT, weld 2" coupling onto 9 5/8" casing outlet valve, installed new ball valve. RU HTT to 9 5/8" casing valve, attempted to pressure test HTT, leaked at welded collar, bled HTT. Removed HTT, dressed threads on coupling, installed HTT, attempted to pressure test, removed HTT. Welded bead around coupling, installed HTT, pressure tested HTT w/ N2, 500 PSI, bled back to 200 PSI. Hot Tap valve, drilled 7" hole w/ 1/2" bit. Closed new ball valve on casing, bled pressure from HTT, installed gauge, WHP 110 PSI. Removed gauge from casing valve, opened valve to test H2S, possible debris in tapped hole. Secured well. Shut down for night.

08/04/2024 - Inspected equipment & work areas. check WHP, 0 PSI on 4.5". Production pipe RU pump truck to 4.5", pressured up to 200 PSI on suspected plug in wellhead 2" nipple. NU HTT, pressure tested to 400 PSI, bled back to 200 PSI, re-tapped gate valve and 2" nipple, bled N2 pressure from HTT, ND HTT, checked WHP, 71 PSI on casing outlet, opened 2" ball valve to test w/ H2S meter, CO = 70 ppm, 0 PSI on 2" nipple at gate valve. replaced 6" nipple w/ 4" nipple to gain 2" on HTT stroke NU HTT, pressure tested to 400 PSI, bled back to 200 PSI, attempted to re-tap gate valve and 2" nipple, broke 1/2" drill bit off in 2" nipple between gate valve & wellhead. bled N2 pressure from HTT, ND HTT. Prepped wellhead to weld 2" coupling onto wellhead welded coupling, allowed weld to cool down. NU HTT, attempted to pressure test HTT, did not

Technical Memorandum

Plug and Abandonment – End of Well Report
Cato San Andres Unit #138 / API 30-005-20267
Section 22, Township 8S, Range 30E
Langan Project No.: 781014301
August 25, 2025 - Page 2 of 7

get a good test due to bad threads on HTT. Begin NPT – RD. Move equipment to Well #164. Perform prework.

08/05/2024 - Pre-job safety meeting - Discussed communication across vendors, LSRs, JSA review. Inspected equipment & work areas, checked WHP = 0 PSI NU HTT, pressure tested HTT w/ N2 to 240 PSI, bled back PSI to 150 PSI. Hot tapped wellhead w/ 1/2" bit, 9 5/8" WHP = 0 PSI. Cut 4.5" production casing, welded Bell Nipple onto 4.5", NU ball valves for dual barriers. Secured well, moved to well # 177.

08/06/2024 - Pre-job safety meeting & JSA review. Inspected equipment & work area. RU WLU & crane MU/PU 5K gate valve, lubricator & WL tools. Pressure tested lubricator 200 PSI, 5 minutes/500 PSI, 5 minutes – good. Opened well, RIH w/ 3.625" GRJB, could not pass through wellhead, POOH, RIH w/ 3.5" GRJB to tag at 3024' KB (top perf 3440'KB), did not determine fluid level POOH. RD lubricator, WLU & crane.

05/15/2025 - NPT due to BLM Prairie Chicken Restrictions 0600-0900. Wait on heavy haul driver (No large truck traffic on Cato Rd before 9:00). MIRU Drake Well Services Rig 26 and support equipment. MU BOP to test stump and pressure test pipe ram and blind ram. Both at 250/800 PSI and both for 5 minutes. Load and tally 2.375" work string. Verify 0 PSI on all 3 strings. Perform housekeeping and shut down for night.

05/16/2025 - NPT due to BLM Prairie Chicken Restrictions 0600-0900. Arrived onsite, pre-job safety meeting - discussed Exclusion Zones, AAR, equipment inspections, JSA review. Conducted operational hazard discussion around scheduled tasks for the day. Inspected equipment and work areas, checked WHP, 4.5" 0 PSI, 9 5/8" 0 PSI and tubing 0 PSI. MIRU cement pump. Pressure test TPW to 1,500 PSI. Open well and pump 5 bbls FW. Well on vacuum MU. Rig well head and BOP. Function test rams and perform draw down test on accumulator. Set floor and prepare for TIH with work string TIH with 2.375" work string with 3.875" junk mill. Stack out just inside of 4.5" casing. Work the pipe up and down and turn with pipe wrenches and made about a foot. Pull out joint, remove junk mill and MU 3.75" tri cone bit. TIH hole and stack out, set tongs on pipe and begin to turn, Able to get past. Made 3 more trips up and down to ensure pipe

Technical Memorandum

Plug and Abandonment – End of Well Report
Cato San Andres Unit #138 / API 30-005-20267
Section 22, Township 8S, Range 30E
Langan Project No.: 781014301
August 25, 2025 - Page 3 of 7

was clear. Continue TIH With 39 joints in (1,256'), operators on floor noticed that the BOP had shifted and was leaning to one side. Halt operations and examine BOP. Noticed that the nipple that screwed into rig well head had failed. Made notification to Team Lead. Conduct PAUSE meeting with crew. Secured BOP with chains on all 4 corners and TOOH. Stop operations again, when I noticed BOP had significant wiggle when unlatching slips and operating tongs. Inspected nipple and saw that the nipple had split open. Call and wait for welder. Welder on location, assessed his task and formed support brackets to secure nipple enough to TOOH with remaining pipe. Conduct safety meeting with all personnel. Discussed hazards associated with task, assigned R&R, wind direction and muster areas. Positioned fire watch and pumped 11 bbls down tubing. Brackets welded in place TOOH with remaining tubing. Spin off rig wellhead and BOP. Reinstall previous well top. Shut down for night.

05/18/2025 - NPT due to BLM Prairie Chicken Restrictions 0600-0900. Arrived onsite, pre-job safety meeting - discussed Exclusion Zones, AAR, equipment inspections, JSA review. Conducted operational hazard discussion around scheduled tasks for the day. Inspected equipment and confirmed 0 PSI on all strings MU 4.5". Weatherford CIBP with centralizer to 2.375" work string and TIH. While stabbing tubing into stripping head, the bottom of the tubing (below rig floor) contacted and broke the (not in use) Kill Line connection, causing to break. Remove flange from kill port and make up blind flange in its place. Manually set CIBP @ 3,388' (52' above top perf). Pick up off plug and set down with 1,000 lbs. Pick up and MU TPW and pressure test to 1,500 PSI. Begin to roll hole. With 10.5 bbls pumped (13.3 bbl capacity) pressure climbed to 600 PSI with no circulation. Bleed pressure off and TOOH. Out of the hole. Inspect circulation ports, suspect that they may have become plugged. Secure well, perform housekeeping and shut down for night.

05/19/2025 - NPT due to BLM Prairie Chicken Restrictions 0600-0900. Arrived onsite, pre-job safety meeting - discussed Exclusion Zones, AAR, equipment inspections, JSA review. Conducted operational hazard discussion around scheduled tasks for the day. Inspected equipment and confirmed 0 PSI on all strings. TIH with 2.375" work string with mule shoe to 3,388' and touch plug in the same spot. Lay down 1 joint RU TPW and pressure test to 1,500

LANGAN

Technical Memorandum

Plug and Abandonment – End of Well Report
Cato San Andres Unit #138 / API 30-005-20267
Section 22, Township 8S, Range 30E
Langan Project No.: 781014301
August 25, 2025 - Page 4 of 7

PSI. Break circulation with 5.5 bbls and roll hole until clean 50 bbls (48 bbl capacity). Pumped at 1.8 bpm with 350 PSI (average pressure) Shut in valves on 4.5" casing and slowly walk pressure up to 500 PSI. At 450 PSI, pressure fell to 0 PSI. Test failed. Pick up 1 joint and retag plug @ 3,388' (same spot). TOOH. At surface with all work string. Secure well, perform housekeeping and shut down for night due to high winds.

05/20/2025 - NPT due to BLM Prairie Chicken Restrictions 0600-0900. Arrived onsite, pre-job safety meeting - discussed Exclusion Zones, AAR, equipment inspections, JSA review. Conducted operational hazard discussion around scheduled tasks for the day. Inspected equipment and confirmed 0 PSI on all strings. NU WL lube and pressure test. 250 for 5 minutes. Pressure test to 500 PSI, failed at 350 PSI. Break out lube and pull RCBL BHA into it, tie back on to well. Open and RIH to 3,388'. POOH logging at 60 fpm. BHA on surface. RDMO WL TIH with 2.375" work string with mule shoe to 3,388'. RU TPW and pressure test to 1,500 PSI. Wait on decision on how much cement to pump for first plug. Break circulation with 0.5 bbls. Plug #1 - Pump 25 sks (5.25 bbls/300' plug) of 15.6 ppg type I/II cement, 1.18 Yield w/ 2% CaCl₂ @ 2.0 bpm w/ 50 PSI and displace with 11.2 bbls. FW TOOH and wash up cement pump. Secure well, perform housekeeping and shut down for night.

05/21/2025 - NPT due to BLM Prairie Chicken Restrictions 0600-0900. Arrived on site, pre-job safety meeting - discussed plan for day, check pressures on well - 0 PSI on all strings and check equipment. Wait on mechanic to run diagnostics on rig. Mechanic on location to monitor rig. TIH with 2.375" work string with mule shoe and tag TOC @ 3,010'. TOOH. Back at surface with all work string. Secure well, perform housekeeping, discuss plan for 5/22 and shut down for night.

05/22/2025 - NPT due to BLM Prairie Chicken Restrictions 0600-0900. Crew travel. Pre-job safety meeting. Review JSAs and discuss days safety and operational goals. Discuss tag out for rig repairs. Check pressures on well. 0 PSI. Check equipment and perform morning checks. Prep to go to work. NPT. Drake well service. Wait on mechanic and perform maintenance on WOR. Change injectors on motor. NPT. Drake well service. Crew travel.

Technical Memorandum

Plug and Abandonment – End of Well Report
Cato San Andres Unit #138 / API 30-005-20267
Section 22, Township 8S, Range 30E
Langan Project No.: 781014301
August 25, 2025 - Page 5 of 7

05/23/2025 - NPT due to BLM Prairie Chicken Restrictions 0600-0900. Crew travel. Pre-job safety meeting. Review JSA's and discuss days safety and operational goals. Discuss WL/Perf operations. Check pressures on well. 0 PSI. Check equipment and perform morning checks. Prep to go to work. RU wireline and Attempt to pressure test to 800 PSI. Pressure kept falling off. No visible leaks at surface. RIH and perforate from 2956' - 2961'. 6 spf (24 shots) POOH w/ wireline. Verify all shots fired. Shut in Blind rams and attempt to break circulation down 4.5" x 9-5/8" casing. Pumped 2 bbls total and pressured out at 450 PSI w/ no circulation. Attempt pressure tests on next 4 runs. Ensure no visible leaks at surface. RIH 4 more separate times and perforate 4.5" casing at 2934' - 2937', 2916' - 2919', 2898' - 2901' & 2880' - 2883'. 6 spf. (72 shots total + 24 shots= 96 holes) RD wireline and prep to RIH w/ tubing. RIH w/ tubing to tag depth of 3010' KB. Displaced the whole time running in hole. RU cementers and pressure test surface lines to 1500 PSI. Break circulation immediately. Break circulation with 0 bbls. Plug # 2 - Pump 50 sks (10.5 bbls slurry, 6.2 bbls mixed water/660' plug) of 15.6 ppg type I/II cement, 1.18 Yield w/ 2% CaCl₂ @ 2.0 bpm w/ 75 PSI and displace with 8.6 bbls FW. Estimated plug depth if perforations take no cement is 3010' - 2350'. LD 21 joints to place EOT above Prospective TOC @ 2290'. Reverse out with 12 bbls of FW. Shut in tubing and pipe rams and begin to attempt cement squeeze. Pumped 0.8 bbls down 4.5" Locked up at 250 PSI. Monitored for 5 minutes. No bleed off. Bleed off the 250 PSI. POOH w/ remaining workstring. Secure well. Shut down for night. Crew travel.

05/24/2025 – Crew travel.

05/25/2025 - NPT due to BLM Prairie Chicken Restrictions 0600-0900. Crew travelPre-job safety meeting. Review JSAs and discuss days safety and operational goals. Discuss days goals. Check pressures on well. 0 PSI. Check equipment and perform morning checks. Prep to go to work. Make up 3.06" mule shoe and RIH to tag TOC. Tag TOC @ 2053'. Break circulation w/ 0 bbls away. Break circulation with 0 bbls. Plug #3. - Pump 31 sks (6.4 bbls slurry, 3.8 bbls mixed water/403' plug) of 15.6 ppg type I/II cement, 1.18 Yield with/ 2% CaCl₂ @ 2.0 bpm w/ 60 PSI and displace with 5.8 bbls FW. Estimated plug depth: 2053' - 1650'. POOH w/ workstring and WOC, RIH w/ workstring and tag TOC @ 1650' KB. POOH w/ workstring. NU WL flange. RU WL and attempt to pressure test. RIH w/ wireline and perforate at 1617' - 1620'. POOH and RD

Technical Memorandum

Plug and Abandonment – End of Well Report
Cato San Andres Unit #138 / API 30-005-20267
Section 22, Township 8S, Range 30E
Langan Project No.: 781014301
August 25, 2025 - Page 6 of 7

wireline. RIH and place EOT just above tag @ 1650'. With 51 joints. Break circulation with 0 bbls. Plug #4. - Pump 54 sks (11.3 bbls slurry, 6.7 bbls mixed water/710' plug) of 15.6 ppg type I/II cement, 1.18 Yield without/ 2% CaCl₂ @ 2.0 bpm w/ 50 PSI and displace with 3.2 bbls FW. Estimated plug depth: 1650' - 940'. LD 23 joints. Stand back 14 stands. Shut well in. Shut down for night and WOC. Crew travel.

05/26/2025 - NPT due to BLM Prairie Chicken Restrictions 0600-0900. Crew travel. Pre-job safety meeting. Review JSA's and discuss days safety and operational goals. Discuss days goals. Check pressures on well. 0 PSI. Check equipment and perform morning checks. Prep to go to work. Make up 3.06" mule shoe and RIH to tag TOC. Tag TOC @ 966'. 26' from estimated top. Good tag. Wait on cement bulk truck. Break circulation with 0 bbls. Plug #5. - Pump 45 sks (9.4 bbls slurry, 5.56 bbls mixed water/591' plug) of 15.6 ppg type I/II cement, 1.18 Yield without/ 2% CaCl₂ @ 2.0 bpm w/ 60 PSI and displace with 1.2 bbls FW. Estimated plug depth: 966' - 375'. Reverse out at 350'. with 5 bbls. POOH w/ workstring. No time to perforate and pump surface plug. Shut well in and shut down for night. Crew travel.

05/27/2025 - NPT due to BLM Prairie Chicken Restrictions 0600-0900. Crew travel. Pre-job safety meeting. Review JSA's and discuss days safety and operational goals. Discuss days goals. Check pressures on well. 0 PSI. Check equipment and perform morning checks. Prep to go to work. RIH and tag TOC @ 357'. POOH w/ 11 joints. Pump down 13-3/8" x 9-5/8" annuli. Pump 0.5 bbls and locked up with 50 PSI. Wait on orders. RU WL and pressure test to 500 PSI. RIH and perforate 4.5" casing from 322' - 325' 6 spf. Attempt to circulate down 4.5" and up 9-5/8". No circulation. RD WL and get permission to pump surface plug inside 4.5" casing. RIH w/ 11 joints. Break circulation with 0 bbls. Plug #6. - Pump 44 sks (9.2 bbls slurry, 5.4 bbls mixed water/357' to surface) of 15.6 ppg type I/II cement, 1.18 Yield without/ 2% CaCl₂ @ 2.0 bpm w/ 25 PSI. Estimated plug depth: 357' to surface. POOH w/ 11 joints and top off with cement. RDMO. Job complete. Ready for cap and cut. Crew travel.

07/22/2025 - Traveled to the CSA 138 (30-005-20267). Held safety meeting. R/U welder. Performed WH cutoff. Cement was at surface in both strings. Installed P&A marker. Backfilled

LANGAN

Technical Memorandum

Plug and Abandonment – End of Well Report
Cato San Andres Unit #138 / API 30-005-20267
Section 22, Township 8S, Range 30E
Langan Project No.: 781014301
August 25, 2025 - Page 7 of 7

cellar. Cleaned equipment and staged on the next location. Shutdown and traveled back to Roswell.



Plug & Abandonment Program
Revision: 0

Cato San Andres Unit 138
L-22-85-30E
Chaves County, NM

NEW MEXICO - CSAU 138 - P&A SCHEMATIC

Location (Unit-Sec-Twp-Range): L-22-85-30E
Surface Hole Latitude: 33.6035118
Surface Hole Longitude: -103.8745728
Bottom Hole Location: Vertical Well

API: 30-005-20267

GL (ft): 0
KB (ft): 10

Surface Casing Information	
Size (in):	13.375
Weight (lb/ft):	48
Grade:	
Hole Size (in):	17.5
Setting Depth:	275

INT Casing Information	
Size (in):	9.625
Weight (lb/ft):	36
Grade:	
Hole Size (in):	12.25
Setting Depth:	2825

Production Casing Information	
Size (in):	4.5
Weight (lb/ft):	10.5
Grade:	
Hole Size (in):	8.75
Setting Depth:	3546

Formation Depth Information	
Formation	MD (ft)
UDSW	107
Red Beds - Top	
Red Beds - Base	1040
Rustler - Top	1040
Rustler - Base	
Yates - Top	1570
Queen - Top	2270
Grayburg - Top	2470
Four Mile Draw - Top	2718
San Andres Marker - Top	3264
Slaughter "A" Zone	3416

UDSW: 107 ft

Red Beds - Top: 0 ft

Red Beds - Base

& Rustler - Top 1040 ft

Rustler - Base: ft

Yates - Top: 1570 ft

Queen - Top: 2270 ft

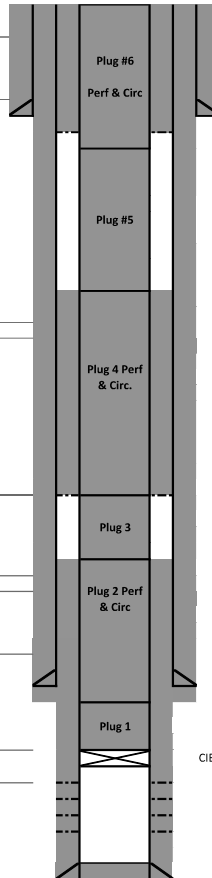
Grayburg - Top: 2470 ft

Four Mile Draw - Top: 2718 ft

Est Production Csg TOC: 2700 ft

San Andres Marker - Top: 3264 ft

Slaughter "A" Zone: 3416 ft



Est Surface Csg TOC: Surface
Circulated

Plug #6 - Perf & Circ: 375 ft

From 375 ft to 0 ft

44 sks (51.9 ft3)

Actual: Circulated to surface

Surface Csg Shoe: 275 ft

Perf Depth: From: 325 ft - 322 ft**Plug #5 966 ft - 375 ft Planned plug**

45 sks(53 ft3) 591 ft Plug planned

Actual TOC @ 357 ft.**Plug #4 - Perf and Circ: 1650 ft - 940 ft. Planned**

54 sks(63.7 ft3) 710 ft plug

Actual TOC @ 966 ft

P 1617 ft - 1620 ft

Plug #3: 2053 ft - 1650 ft Planned Plug Depth

31 sks (36.6 ft3) 403 ft.

Actual TOC @ 1650 ft**Perf depth:** 1617 ft - 1620 ft**Plug #2 - Perf and Circ: 660 ft plug planned**

Plug: 3088 ft - 2428 ft- Planned

50 sks (58 ft3)

Actual: TOC @ 2053 ft**Perf depth:** 2956 to 2961 ft

2934' - 2937', 2916' - 2919',

2898' - 2901' & 2880' - 2883'. 6 spf, (72 shots total + 24 shots= 96 holes)

Inter. Csg: 2825 ft**Plug #1: 300 ft Plug Planned**

25 sks(29 ft3)

3388 ft - 3088 ft

Actual: TOC @ 3088 ft**CIBP:** 3388 ft

Top Perf: 3440 ft

Bottom Perf: 3456 ft

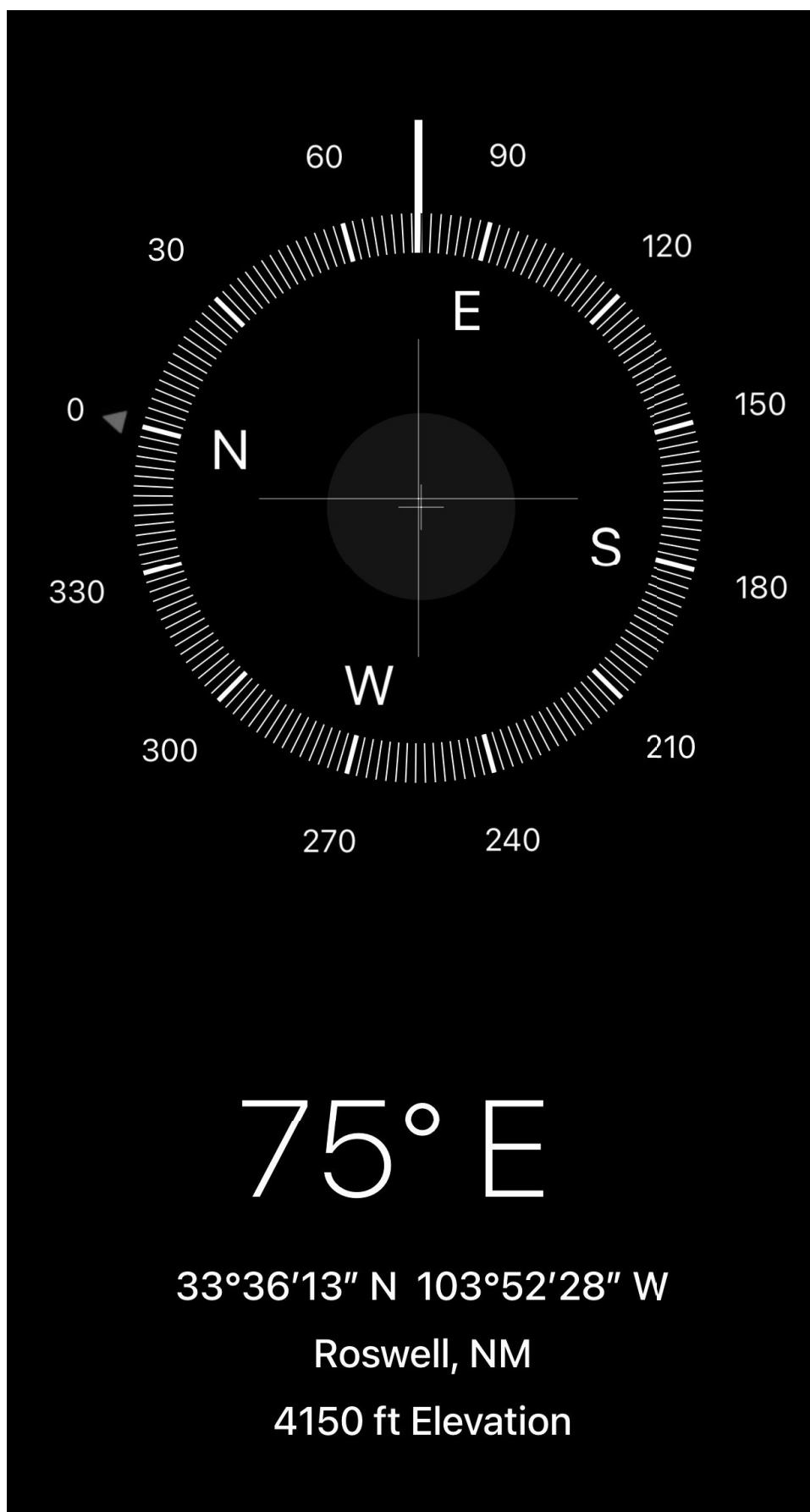
PBD: 3505

Prod Csg Shoe: 3546

CIBP: 3388 ft







Sante Fe Main Office
Phone: (505) 476-3441

General Information
Phone: (505) 629-6116

Online Phone Directory
<https://www.emnrd.nm.gov/oed/contact-us>

State of New Mexico
Energy, Minerals and Natural Resources
Oil Conservation Division
1220 S. St Francis Dr.
Santa Fe, NM 87505

CONDITIONS

Action 500653

CONDITIONS

Operator: CANO PETRO OF NEW MEXICO, INC. 801 Cherry Street Fort Worth, TX 76102	OGRID: 248802
	Action Number: 500653
	Action Type: [C-103] Sub. Plugging (C-103P)

CONDITIONS

Created By	Condition	Condition Date
loren.diede	None	8/29/2025