

Well Name: MARY ANNE	Well Location: T24N / R9W / SEC 9 / NWSW / 36.325729 / -107.800293	County or Parish/State: SAN JUAN / NM
Well Number: 3	Type of Well: OIL WELL	Allottee or Tribe Name:
Lease Number: NMNM10089	Unit or CA Name:	Unit or CA Number:
US Well Number: 300452505000S3	Operator: DUGAN PRODUCTION CORPORATION	

Subsequent Report

Sundry ID: 2869666

Type of Submission: Subsequent Report

Type of Action: Plug and Abandonment

Date Sundry Submitted: 08/26/2025

Time Sundry Submitted: 11:00

Date Operation Actually Began: 06/30/2025

Actual Procedure: Dugan Production P&A'd the well on 6/30/2025 - 7/15/2025 per the attached procedure.

SR Attachments

Actual Procedure

- Mary\_Anne\_3\_BLM\_apvd\_plug\_changes\_20250826105934.pdf
- Mary\_Anne\_3\_OCD\_apvd\_plug\_changes\_20250826105934.pdf
- Mary\_Anne\_3\_SR\_PA\_formation\_tops\_20250826105820.pdf
- Mary\_Anne\_3\_SR\_PA\_completed\_wellbore\_schematic\_20250826105811.pdf
- Mary\_Anne\_3\_SR\_PA\_work\_completed\_20250826105755.pdf

Received by OCD: 8/27/2025 11:14:09 AM

Page 2 of 14

Well Name: MARY ANNE	Well Location: T24N / R9W / SEC 9 / NWSW / 36.325729 / -107.800293	County or Parish/State: SAN JUAN / NM
Well Number: 3	Type of Well: OIL WELL	Allottee or Tribe Name:
Lease Number: NMNM10089	Unit or CA Name:	Unit or CA Number:
US Well Number: 300452505000S3	Operator: DUGAN PRODUCTION CORPORATION	

Operator

I certify that the foregoing is true and correct. Title 18 U.S.C. Section 1001 and Title 43 U.S.C. Section 1212, make it a crime for any person knowingly and willfully to make to any department or agency of the United States any false, fictitious or fraudulent statements or representations as to any matter within its jurisdiction. Electronic submission of Sundry Notices through this system satisfies regulations requiring a

Operator Electronic Signature: TYRA FEIL	Signed on: AUG 26, 2025 10:58 AM
Name: DUGAN PRODUCTION CORPORATION	
Title: Authorized Representative	
Street Address: PO BOX 420	
City: FARMINGTON	State: NM
Phone: (505) 325-1821	
Email address: TYRAFEIL@DUGANPRODUCTION.COM	

Field

Representative Name: Aliph Reena		
Street Address: PO Box 420		
City: Farmington	State: NM	Zip: 87499-0420
Phone: (505)360-9192		
Email address: Aliph.Reena@duganproduction.com		

BLM Point of Contact

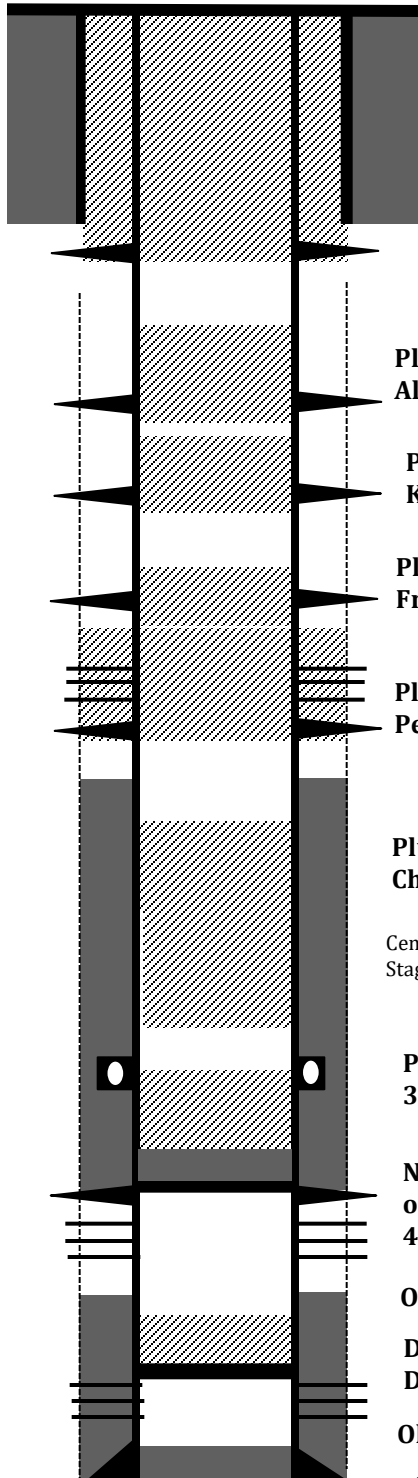
BLM POC Name: MATTHEW H KADE	BLM POC Title: Petroleum Engineer
BLM POC Phone: 5055647736	BLM POC Email Address: MKADE@BLM.GOV
Disposition: Accepted	Disposition Date: 08/27/2025
Signature: Matthew Kade	

Dugan Production P&A'd the well on **06/30/2025 - 07/15/2025** per the following procedure:

- MI & RU Aztec Rig 481 and cement equipment. Spot & RU equipment. RU air package as back up for drilling out the plugs as a back up.
- Check pressures, Tubing 40 psi, Casing 40 psi, BH 0 psi.
- ND WH & NU BOP. LD rods & 2-3/8" rod string and production tubing.
- Check pressures, Tubing 0 psi, Casing 0 psi, BH 0 psi.
- **Drill Out Operations:** RIH w/3-7/8" junk mill, 3-1/8" drill collars & 2-3/8" tubing for workstring. Tagged 1624' and start drill out operations. Drilled out all plugs & cement retainers 07/01/2025-07/08/2025. Drilled out to 4560'. Tagged Solid cement at 4560'. Clean and circulate hole to 4560'. Started P & A ops from 4560'.
- Check pressures, Tubing 0 psi, Casing 0 psi, BH 0 psi.
- RU Wireline and ran CBL from 4560' to surface. Sent copy of CBL to BLM & NMOCD. Copy of communications attached.
- **Plug I, Gallup perforations, Gallup top, DV tool & Mancos:** Spot Plug I inside 4½" casing from 4560' w/34 sks (39.1 cu ft) Class G cement to cover the Gallup top, DV tool & Mancos top. Displaced w/15.9 bbls water. WOC overnight. Tagged TOC at 3930'. Good tag. **Plug I, Inside 4½" casing, 34 sks, 39.1 cu ft, Mancos-DV tool-Gallup top, 3930'-4560'.**
- Check pressures, Tubing 0 psi, Casing 0 psi, BH 0 psi.
- **Plug II, Mesaverde, Lower Chacra, Upper Chacra:** Spot Plug II inside 4½" casing from 3213' w/104 sks, 119.6 cu ft Class G neat cement to cover the Mesaverde, Lower Chacra & Upper Chacra top. Displaced w/7.1 bbls water. WOC 4 hrs. Tagged TOC at 1825'. **Plug II, Inside 4½" casing, 104 sks, 119.6 cu ft, Upper Chacra-Lower Chacra-Mesaverde, 1825'-3213'.**
- **Plug III, Pictured Cliffs, Fruitland perforations:** Spot Plug III inside 4½" casing from 1672' w/19 sks, 21.85 cu ft Class G cement to cover the Pictured Cliffs top & Fruitland perforations. Displaced w/5.5 bbls water. WOC overnight. Tagged TOC at 1490'. Good tag. **Plug III, Inside 4½" casing, 19 sks, 21.85 cu ft, Pictured Cliffs-Fruitland Perforations, 1490'-1672'.**
- Check pressures, Tubing 0 psi, Casing 0 psi, BH 0 psi.
- **Plug IV, Fruitland:** RU WL & shoot squeeze holes at 1421'. Attempt to get a rate through the squeeze holes. Cannot get a rate, locked up to 700 psi with no rate. Got permission to do inside plug. RIH open ended to 1490'. Spot Plug IV, inside 4½" casing from 1490' w/22 sks, 25.3 cu ft Class G neat cement. Displaced w/4.5 bbls water. WOC overnight. Tagged TOC at 1238'. Good tag. **Plug IV, Inside 4½" casing, perforations at 1421', 22 sks, 25.3 cu ft, Fruitland, 1238'-1490'.**
- Check pressures, Tubing 0 psi, Casing 0 psi, BH 0 psi.
- **Plug V, Kirtland:** RU WL & shoot squeeze holes at 1055'. Attempt to get a rate through the squeeze holes. Cannot get a rate, locked up to 600 psi with no rate. Got permission to do inside plug. RIH open ended to 1103'. Spot Plug V inside 4½" casing from 1103' w/20 sks, 23 cu ft Class G cement to cover the Kirtland top. Displaced w/3.2 bbls water. WOC 4 hrs. Tagged TOC at 950'. Good tag. **Plug V, Inside 4½" casing, perforations at 1055', 20 sks, 23 cu ft, Kirtland, 950'-1103'.**

- **Plug VI, Ojo Alamo:** RU WL & shoot squeeze holes at 731'. Attempt to get a rate through the squeeze holes. Cannot get a rate, locked up to 600 psi with no rate. Got permission to do inside plug. RIH open ended to 787'. Spot Plug VI inside 4½" casing from 787' w/22 sks, 25.3 cu ft Class G cement to cover the Ojo Alamo top. Displaced w/2 bbls water. WOC 4 hrs. Tagged TOC at 570'. Good tag. **Plug VI, Inside 4½" casing, perforations at 731', 22 sks, 25.3 cu ft, Ojo Alamo, 570'-787'.**
- **Plug VII, Surface:** RU WL & shoot squeeze holes at 278'. Attempt to get a rate through the squeeze holes. Broke circulation to surface through BH. Swap to cement. Spot & squeeze Plug VII inside/outside 4½" casing from 278' w/110 sks, 126.5 cu ft Class G cement to cover the Surface casing shoe to surface. No displacement. WOC 4 hrs. RU welder & cut wellhead off. Tagged TOC at 16' inside casing and at 0' inside annulus. Good tag. **Plug VII, Inside/Outside 4½" casing, perforations at 278', 110 sks, 126.5 cu ft, Surface, 0'-278'.**
- Install dry hole marker & fill up cellar w/15 sks, 17.25 cu ft Class G neat cement. Clean location. Rig down Aztec 481 and cement equipment.
- Jimmy Dobson w/BLM witnessed job.
- **Well P&A'd 08/15/2025.**

Mary Anne # 3  
 API: 30-045-25050  
 Sec 9 T24N R09W  
 1650' FSL & 790' FWL  
 San Juan County, NM  
 Lat: 36.326093, Long: -107.800784



8-5/8" 24# casing @ 228'. Cemented with 135 sks, 159 Cu.ft.  
 Circulated 2 bbls cement to surface

**Plug VII, Inside/Outside 4 ½" casing, Perforations at 278', 110 sks, 126.5 Cu.ft, Surface, 0'-278'**

**Plug VI, Inside 4 ½" casing, Perforations at 731', 22 sks, 25.3 Cu.ft, Ojo Alamo, 570'-787'**

**Plug V, Inside 4 ½" casing, Perforations at 1055', 20 sks, 23 Cu.ft, Kirtland, 950'-1103'**

**Plug IV, Inside 4 ½" casing, Perforations at 1421', 22 sks, 25.3 Cu.ft, Fruitland, 1238'-1490'**

**Plug III, Inside 4 ½" casing, 19 sks, 21.85 Cu.ft, Pictured Cliffs-Fruitland Perforations, 1490'-1672'**

**Plug II, Inside 4 ½" casing, 104 sks, 119.6 Cu.ft, Upper Chacra-Lower Chacra-Mesaverde, 1825'-3213'**

Cemented Stage I w/ 325 sks 50/50 poz & 125 sks Class B cement, 560 Cu.ft. **DV tool @ 4340'.**  
 Stage II w/ 500 sks 50-50 sks cement, 1174 Cu.ft.

**Plug I, Inside 4 ½" casing, 34 sks, 39.1 Cu.ft, Mancos-DV tool-Gallup top, 3930'-4560'**

**Note: Tagged PBTB at 4560' from original re-completion. P & A operations started from 4560'. Drilled out all plugs and cement till 4560'.**

**Old Gallup Perforations are @ 4891'-5365'**

**Dakota PBTB'd w/ CIBP at 6278'. Bailed 50' cement on top of CIBP. Dakota PBTB'd in 1985.**

**Old Dakota Perforated are @ 6328'-6342'**

**4 ½" 11.6 # casing @ 6409', Hole size 7-7/8"**

**Mary Anne # 3**  
API: 30-045-25050  
Sec 9 T24N R09W  
1650' FSL & 790' FWL  
San Juan County, NM  
Lat: 36.326093, Long: -107.800784

**Elevation ASL : 6677' GL, 6689' KB**

**Formation Tops (Referenced for P & A Submitted)**

- *Surface Casing - 228'*
- *Ojo Alamo - 680'*
- *Kirtland - 1000'*
- *Fruitland - 1370'*
- *Fruitland Perforations - 1610'-1618'*
- *Pictured Cliffs - 1622'*
- *Lewis - 1730'*
- *Upper Chacra - 2050'*
- *Lower Chacra - 2410'*
- *Mesaverde - 3150'*
- *Mancos - 4310'*
- *DV tool - 4340'*
- *Gallup - 4900'*
- *Gallup Perfs - 4891'-5365'*

**Tyra Feil**

---

**From:** Kade, Matthew H <mkade@blm.gov>  
**Sent:** Thursday, July 10, 2025 2:56 PM  
**To:** Aliph Reena; Rennick, Kenneth G; Loren.Diede@emnrd.nm.gov; john.garcia@emnrd.nm.gov; Martinez, Crystal V; Dobson, Jimmie P; Lucero, Virgil S  
**Cc:** Tyra Feil; Brian McCann; Dean Mestas; Alex Prieto-Robles - Aztec Well Service  
**Subject:** Re: [EXTERNAL] Dugan Production Corp - Mary Anne # 3 - CBL and revised procedure for P & A.

The BLM approves of the proposed changes to procedure.

Thanks,

**Matthew Kade**

*Petroleum Engineer* | Bureau of Land Management

Farmington Field Office | 6251 College Blvd., Suite A / Farmington, NM 87402

Office: 505-564-7736



---

**From:** Aliph Reena <Aliph.Reena@duganproduction.com>  
**Sent:** Thursday, July 10, 2025 2:48 PM  
**To:** Kade, Matthew H <mkade@blm.gov>; Rennick, Kenneth G <krennick@blm.gov>; Loren.Diede@emnrd.nm.gov <loren.diede@emnrd.nm.gov>; john.garcia@emnrd.nm.gov <john.garcia@emnrd.nm.gov>; Martinez, Crystal V <cmartinez@blm.gov>; Dobson, Jimmie P <jdobson@blm.gov>; Lucero, Virgil S <vlucero@blm.gov>  
**Cc:** Tyra Feil <Tyra.Feil@duganproduction.com>; Brian McCann <bmccann@aztecwell.com>; Dean Mestas <dmestas@aztecwell.com>; Alex Prieto-Robles - Aztec Well Service <arobles@aztecwell.com>  
**Subject:** [EXTERNAL] Dugan Production Corp - Mary Anne # 3 - CBL and revised procedure for P & A.

**This email has been received from outside of DOI - Use caution before clicking on links, opening attachments, or responding.**

**RE: Revised procedure after CBL  
Dugan Production Corp.  
Mary Anne # 3  
API: 30-045-25050**

Please see the attached CBL from Mary Anne # 3. From the CBL the TOC appears to be at 1582'. Based on the TOC behind casing from the CBL, we propose the following revisions to the original approved procedure and NOI.

- **Pictured Cliffs, 1522'-1672'** - Will spot cement inside casing from 1672' to 1522'. Will verify and tag. Fruitland perforations are 1610'-1618'.
- **Fruitland, 1270'-1420'** - Will perforate at 1420'. Will do inside/outside plug from 1270'-1420'. Will tag and verify.
- **Kirtland, 900'-1050'** - Will perforate at 1050'. Will do inside/outside plug from 900'-1050'. Will tag and verify.
- **Ojo Alamo, 580'-730'** - Will perforate at 730'. Will do inside/outside plug from 580'-730'. Will tag and verify.
- **Surface, 0-278'** - Will perforate at 278'. Will do inside/Outside plug from 0-278'. Will tag and verify.

Will do 100' w/ 100' excess outside and will do minimum of 150' inside for plugs.

All other plugs will be inside plugs as approved in the original NOI. If the changes are acceptable to NMOCD, please let us know and we will proceed accordingly.

Regards,  
Aliph Reena  
505-360-919



**Tyra Feil**

---

**From:** Diede, Loren, EMNRD <Loren.Diede@emnrd.nm.gov>  
**Sent:** Thursday, July 10, 2025 2:57 PM  
**To:** Aliph Reena; MATHEW; KENNETH; john.garcia@emnrd.nm.gov; Martinez, Crystal V; Dobson, Jimmie P; VIRGIL  
**Cc:** Tyra Feil; Brian McCann; Dean Mestas; Alex Prieto-Robles - Aztec Well Service  
**Subject:** RE: [EXTERNAL] Dugan Production Corp - Mary Anne # 3 - CBL and revised procedure for P & A.

Based on CBL, NMOCD concurs with BLM approval.

Thanks, Loren

Thank you,  
Loren Diede  
Petroleum Specialist III  
Engineering Special Projects  
Oil Conservation Division  
1220 South St. Francis Drive  
Santa Fe, New Mexico 87505  
505-394-3582 OCD cell



---

**From:** Aliph Reena <Aliph.Reena@duganproduction.com>  
**Sent:** Thursday, July 10, 2025 2:48 PM  
**To:** MATHEW <mkade@blm.gov>; KENNETH <krennick@blm.gov>; Diede, Loren, EMNRD <Loren.Diede@emnrd.nm.gov>; john.garcia@emnrd.nm.gov; Martinez, Crystal V <cmartinez@blm.gov>; Dobson, Jimmie P <jdobson@blm.gov>; VIRGIL <vlucero@blm.gov>  
**Cc:** Tyra Feil <Tyra.Feil@duganproduction.com>; Brian McCann <bmcann@aztecwell.com>; Dean Mestas <dmestas@aztecwell.com>; Alex Prieto-Robles - Aztec Well Service <aarobles@aztecwell.com>  
**Subject:** [EXTERNAL] Dugan Production Corp - Mary Anne # 3 - CBL and revised procedure for P & A.

CAUTION: This email originated outside of our organization. Exercise caution prior to clicking on links or opening attachments.

**RE: Revised procedure after CBL**  
**Dugan Production Corp.**  
**Mary Anne # 3**  
**API: 30-045-25050**

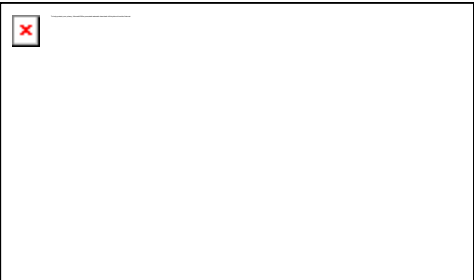
Please see the attached CBL from Mary Anne # 3. From the CBL the TOC appears to be at 1582'. Based on the TOC behind casing from the CBL, we propose the following revisions to the original approved procedure and NOI.

- **Pictured Cliffs, 1522'-1672'** - Will spot cement inside casing from 1672' to 1522'. Will verify and tag. Fruitland perforations are 1610'-1618'.
- **Fruitland, 1270'-1420'** - Will perforate at 1420'. Will do inside/outside plug from 1270'-1420'. Will tag and verify.
- **Kirtland, 900'-1050'** - Will perforate at 1050'. Will do inside/outside plug from 900'-1050'. Will tag and verify.
- **Ojo Alamo, 580'-730'** - Will perforate at 730'. Will do inside/outside plug from 580'-730'. Will tag and verify.
- **Surface, 0-278'** - Will perforate at 278'. Will do inside/Outside plug from 0-278'. Will tag and verify.

Will do 100' w/ 100' excess outside and will do minimum of 150' inside for plugs.


All other plugs will be inside plugs as approved in the original NOI. If the changes are acceptable to NMOCD, please let us know and we will proceed accordingly.

Regards,  
Aliph Reena  
505-360-919



**Aliph Reena**  
Engineering Supervisor  
Dugan Production Corp

---

 O: 505-326-4548 | D: 505-360-9192 [DuganProduction.com](http://DuganProduction.com)









Sante Fe Main Office  
Phone: (505) 476-3441

General Information  
Phone: (505) 629-6116

Online Phone Directory  
<https://www.emnrd.nm.gov/ocd/contact-us>

State of New Mexico  
Energy, Minerals and Natural Resources  
Oil Conservation Division  
1220 S. St Francis Dr.  
Santa Fe, NM 87505

CONDITIONS

Action 499743

CONDITIONS

Operator: DUGAN PRODUCTION CORP PO Box 420 Farmington, NM 87499	OGRID: 6515
	Action Number: 499743
	Action Type: [C-103] Sub. Plugging (C-103P)

CONDITIONS

Created By	Condition	Condition Date
loren.diede	None	8/29/2025