

Well Name: HIKE	Well Location: T29N / R12W / SEC 1 / LOT 7 / 36.7572327 / -108.046463	County or Parish/State: SAN JUAN / NM
Well Number: 1	Type of Well: CONVENTIONAL GAS WELL	Allottee or Tribe Name:
Lease Number: NMSF065557A	Unit or CA Name:	Unit or CA Number:
US Well Number: 300452916700S1	Operator: DUGAN PRODUCTION CORPORATION	

Subsequent Report

Sundry ID: 2881690

Type of Submission: Subsequent Report

Date Sundry Submitted: 11/06/2025

Date Operation Actually Began: 08/29/2025

Type of Action: Plug and Abandonment

Time Sundry Submitted: 10:17

Actual Procedure: Dugan Production plugged and abandoned the well from 08/29/2025 - 09/04/2025 per the attached procedure.

SR Attachments

- Actual Procedure
- Hike_1_SR_PA_marker_gps_photos_20251106101514.pdf
 - Hike_1_SR_PA_tops_20251106101502.pdf
 - Hike_1_SR_PA_completed_wellbore_schematic_20251106101455.pdf
 - Hike_1_SR_PA_completed_work_20251106101449.pdf

Well Name: HIKE	Well Location: T29N / R12W / SEC 1 / LOT 7 / 36.7572327 / -108.046463	County or Parish/State: SAN JUAN / NM
Well Number: 1	Type of Well: CONVENTIONAL GAS WELL	Allottee or Tribe Name:
Lease Number: NMSF065557A	Unit or CA Name:	Unit or CA Number:
US Well Number: 300452916700S1	Operator: DUGAN PRODUCTION CORPORATION	

Operator

I certify that the foregoing is true and correct. Title 18 U.S.C. Section 1001 and Title 43 U.S.C. Section 1212, make it a crime for any person knowingly and willfully to make to any department or agency of the United States any false, fictitious or fraudulent statements or representations as to any matter within its jurisdiction. Electronic submission of Sundry Notices through this system satisfies regulations requiring a

Operator Electronic Signature: TYRA FEIL

Signed on: NOV 06, 2025 10:15 AM

Name: DUGAN PRODUCTION CORPORATION

Title: Authorized Representative

Street Address: PO BOX 420

City: FARMINGTONState: NM

Phone: (505) 325-1821

Email address: TYRAFEIL@DUGANPRODUCTION.COM

Field

Representative Name: Aliph Reena

Street Address: PO Box 420

City: FarmingtonState: NMZip: 87499-0420

Phone: (505)360-9192

Email address: Aliph.Reena@duganproduction.com

BLM Point of Contact

BLM POC Name: KENNETH G RENNICK

BLM POC Title: Petroleum Engineer

BLM POC Phone: 5055647742

BLM POC Email Address: krennick@blm.gov

Disposition: Accepted

Disposition Date: 11/07/2025

Signature: Kenneth Rennick

Dugan Production plugged the well from **08/29/2025 to 09/04/2025** per the following procedure:

- MI&RU Aztec Well Service Rig 450 and spot in and RU cement equipment.
- Check pressures: Tubing 15 psi, Casing 55 psi, BH 0 psi.
- Pull and LD all production tubing.
- PU and tally 2-3/8" work string. Run with 4½" sting mill to scrape casing to 3750'.
- Check pressures: Tubing 10 psi, Casing 60 psi, BH 0 psi.
- RIH and set 4½" cement retainer at 3660'. Mesaverde perforations are from 3710 to 3718.
- Load and circulate hole with 56 bbls of water.
- Load and pressure test casing to 650 psi for 30 minutes. Good test.
- Run CBL from 3660' to surface. Sent copy of CBL and revised procedure to NMOCD. Copy of communications attached.
- **Plug I, Mesaverde top & perforations:** Sting in cement retainer at 3660'. Squeeze 15 sks, 17.25 cu ft Class G neat cement under the cement retainer to cover the Mesaverde top, perforations below the retainer till top perforation at 3710'. Displaced with 14.1 bbls of water. Sting out. Spot Plug I inside 4½" casing above the retainer from 3660' to 3504' w/18 sks, 20.7 cu ft Class G neat cement to cover the Mesaverde top. Displaced with 13.2 bbls of water. Tagged TOC at 3504'. Good tag. **Plug I, Inside 4½" casing, 33 sks, 37.95 cu ft, Mesaverde top & Mesaverde perforations, 3504'-3710'.**
- Check pressures: Tubing 0 psi, Casing 0 psi, BH 0 psi.
- **Plug IIA, Chacra Lower Chacra Top:** RU Wireline. RIH and shoot squeeze holes at 3100'. RIH and set 4½" CICR @ 3050'. Sting in, established injection rate at 1.4 BPM at 600 psi. Swap to cement. Spot and squeeze Plug II inside/outside 4½" casing from 3100' w/60 sks, 69 cu ft Class G neat cement to cover the Lower Chacra top, 40 sks, 46 cu ft outside casing, 4 sks, 4.6 cu ft below retainer, 16 sks, 18.4 cu ft above cement retainer inside casing. Displaced with 8.5 bbls of water. WOC 4 hrs. Tagged TOC at 2760'. Good tag. **Plug IIA, Inside/Outside 4½" casing, Perforations at 3100'. Cement Retainer at 3050' 60 sks, 69 cu ft, Lower Chacra, 2760'-3100'.**
- **Plug IIB, Chacra Upper Chacra Top:** RU Wireline. RIH and shoot squeeze holes at 2740'. RIH and set 4½" CICR @ 2695'. Sting in, established injection rate at 1.5 BPM at 800 psi. Swap to cement. Spot and squeeze Plug IIB inside/outside 4½" casing from 2740' w/60 sks, 69 cu ft Class G neat cement to cover the Upper Chacra top, 40 sks, 46 cu ft outside casing, 4 sks, 4.6 cu ft below retainer, 16 sks, 18.4 cu ft above cement retainer inside casing. Displaced with 7.1 bbls of water. WOC overnight. Tagged TOC at 2454'. Good tag. **Plug IIB, Inside/Outside 4½" casing, Perforations at 2740'. Cement Retainer at 2695' 60 sks, 69 cu ft, Upper Chacra, 2454'-2740'.**
- Check pressures: Tubing 0 psi, Casing 0 psi, BH 0 psi.
- **Plug III, DV tool-Pictured Cliffs-Fruitland:** Spot Plug III inside 4½" casing from 2205' to 1347' w/65 sks, 74.75 cu ft Class G neat cement to cover the DV tool, Pictured Cliffs & Fruitland tops. Displaced with 5.2 bbls of water. **Plug III, Inside 4½" casing, 65 sks, 74.75 cu ft, DV tool-Pictured Cliff-Fruitland, 1347'-2205'.**
- **Plug IV, Kirtland-Ojo Alamo:** Spot Plug IV inside 4½" casing from 852' to 484' w/28 sks, 32.2 cu ft to cover the Kirtland-Ojo Alamo tops. Displaced with 1.8 bbls of water. **Plug IV, Inside 4½" casing, 28 sks, 32.2 cu ft, Kirtland-Ojo Alamo, 484'-852'.**
- **Plug V: Surface Casing-Surface:** Spot Plug V inside 4½" casing from 312' to surface w/34 sks, 39.1 cu ft to cover the Surface Casing shoe to surface. No displacement. **Plug V, Inside 4½", 34 sks, 39.1 cu ft to cover the Surface Casing-Surface, 0'-312'.**
- Fill up cellar and install dry hole marker with 24 sks, 27.6 cu ft, class G neat cement.
- RD Aztec Well Service Rig 450, clean location. Move.
- Monty Gomez with BLM witnessed the job.
- Photos of P & A marker and GPS coordinates attached per NMOCD COA.
- **Well P&A'd 09/04/2025.**

Hike #1

30-045-29167

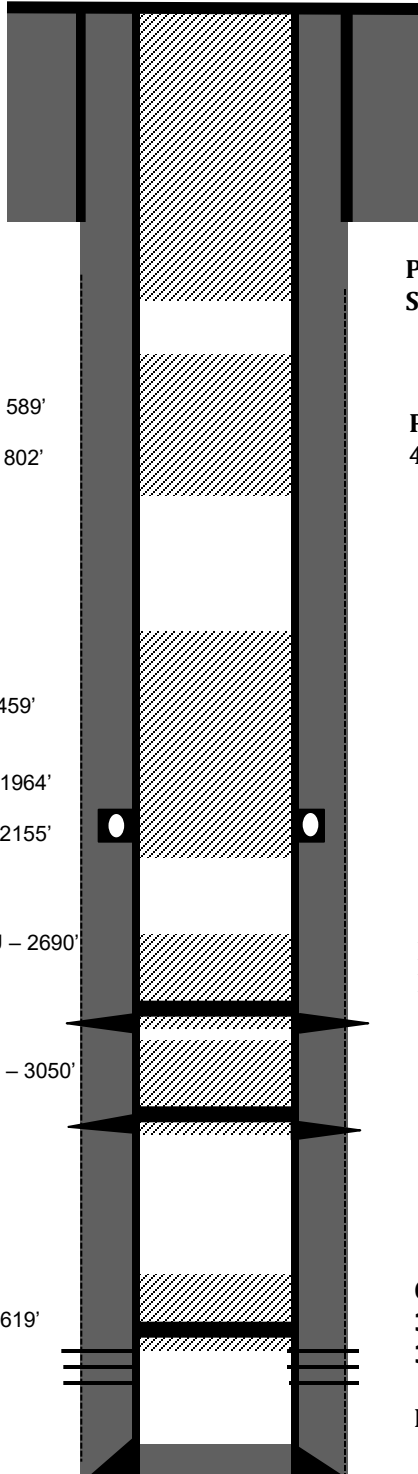
Mesaverde

1650' FNL & 1607' FEL

G-S1-T29N-R12W

San Juan County, NM

Lat: 36.7572327 Long: -108.046463



8-5/8", 24# casing set @ 260'. Hole size - 12 1/4"

Cemented surface casing with 175 sacks of Class 'B' neat with 2% CaCl. Circulated cement to surface

Plug V, Inside 4 1/2", 34 sks, 39.1 Cu.ft to cover the Surface Casing-Surface, 0'-312'**Plug IV, Inside 4 1/2" casing, 28 sks, 32.2 Cu.ft, Kirtland-Ojo Alamo, 484'-852'****Plug III, Inside 4 1/2" casing, 65 sks, 74.75 Cu.ft, DV tool-Pictured Cliff-Fruitland, 1347'-2205'****Plug II B, Inside/outside 4 1/2" casing, Perforations at 2740'. Cement Retainer at 2695' 60 sks, 69 cu ft, Upper Chacra, 2454'-2740'.****Plug II A, Inside/outside 4 1/2" casing, Perforations at 3100'. Cement Retainer at 3050' 60 sks, 69 cu ft, Lower Chacra, 2760'-3100'****4-1/2", 11.6# casing set @ 3820'.**

Cemented in stages: 1st Stage:120 sxs neat cement, 2nd Stage:375 sxs. Class 'B' neat cement with 2% extender, yield 2.06u.ft./sx, density 12.4#/gal, tailed in w/ 100 sxs Class 'B' neat. Circulated 4 bbls circ cement to surface. (595 sks). DV tool at 2155'

Cement Retainer at 3660'. Plug I, Inside 4 1/2" casing, 33 sks, 37.95 Cu.ft, Mesaverde top & Mesaverde perforations, 3504'-3710'.**Mesaverde perforations 3710'-3718'****4 1/2" 11.6 # casing @ 3820', Hole size 7-7/8"**

Hike #1
30-045-29167
Mesaverde
1650' FNL & 1607' FEL
G-S1-T29N-R12W
San Juan County, NM
Lat: 36.7572327 Long: -108.046463

Elevation ASL : 5855' GL

Formation Tops (Referenced for the P & A'ed)

- **Surface Casing - 260'**
- **Ojo Alamo - 589'**
- **Kirtland - 802'**
- **Fruitland - 1459'**
- **Pictured Cliffs - 1964'**
- **Lewis - 2137'**
- **Chacra Upper - 2690'**
- **Chacra Lower - 3050'**
- **Mesaverde - 3619'**
- **Mesaverde perforations - 3710'-3718'**









Sante Fe Main Office
Phone: (505) 476-3441

General Information
Phone: (505) 629-6116

Online Phone Directory
<https://www.emnrd.nm.gov/oed/contact-us>

State of New Mexico
Energy, Minerals and Natural Resources
Oil Conservation Division
1220 S. St Francis Dr.
Santa Fe, NM 87505

CONDITIONS

Action 524307

CONDITIONS

Operator: DUGAN PRODUCTION CORP PO Box 420 Farmington, NM 87499	OGRID: 6515
	Action Number: 524307
	Action Type: [C-103] Sub. Plugging (C-103P)

CONDITIONS

Created By	Condition	Condition Date
loren.diede	None	11/7/2025